



Full wwPDB X-ray Structure Validation Report ⓘ

Jan 31, 2016 – 09:34 PM GMT

PDB ID : 1POX
Title : THE REFINED STRUCTURES OF A STABILIZED MUTANT AND OF WILD-TYPE PYRUVATE OXIDASE FROM LACTOBACILLUS PLAN-TARUM
Authors : Muller, Y.A.; Schulz, G.E.
Deposited on : 1993-11-09
Resolution : 2.10 Å(reported)

This is a Full wwPDB X-ray Structure Validation Report for a publicly released PDB entry.
We welcome your comments at validation@mail.wwpdb.org
A user guide is available at
<http://wwpdb.org/validation/2016/XrayValidationReportHelp>
with specific help available everywhere you see the ⓘ symbol.

The following versions of software and data (see [references ⓘ](#)) were used in the production of this report:

MolProbity : 4.02b-467
Mogul : 1.7 (RC4), CSD as536be (2015)
Xtriage (Phenix) : 1.9-1692
EDS : rb-20026688
Percentile statistics : 20151230.v01 (using entries in the PDB archive December 30th 2015)
Refmac : 5.8.0135
CCP4 : 6.5.0
Ideal geometry (proteins) : Engh & Huber (2001)
Ideal geometry (DNA, RNA) : Parkinson et al. (1996)
Validation Pipeline (wwPDB-VP) : trunk26865

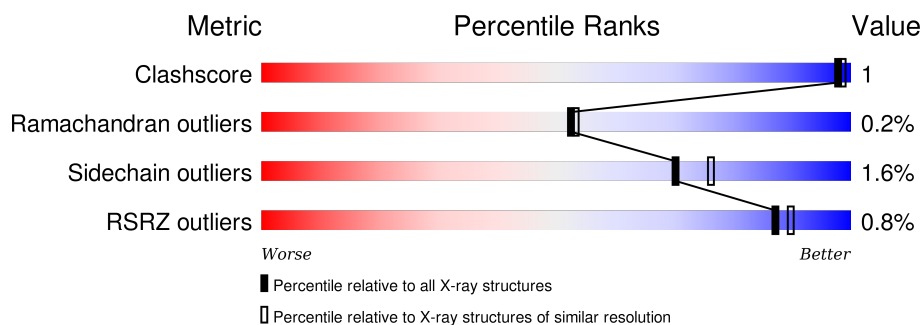
1 Overall quality at a glance

The following experimental techniques were used to determine the structure:

X-RAY DIFFRACTION

The reported resolution of this entry is 2.10 Å.

Percentile scores (ranging between 0-100) for global validation metrics of the entry are shown in the following graphic. The table shows the number of entries on which the scores are based.



Metric	Whole archive (#Entries)	Similar resolution (#Entries, resolution range(Å))
Clashscore	102246	4460 (2.10-2.10)
Ramachandran outliers	100387	4413 (2.10-2.10)
Sidechain outliers	100360	4414 (2.10-2.10)
RSRZ outliers	91569	3948 (2.10-2.10)

The table below summarises the geometric issues observed across the polymeric chains and their fit to the electron density. The red, orange, yellow and green segments on the lower bar indicate the fraction of residues that contain outliers for ≥ 3 , 2, 1 and 0 types of geometric quality criteria. A grey segment represents the fraction of residues that are not modelled. The numeric value for each fraction is indicated below the corresponding segment, with a dot representing fractions $\leq 5\%$. The upper red bar (where present) indicates the fraction of residues that have poor fit to the electron density. The numeric value is given above the bar.

Mol	Chain	Length	Quality of chain
1	A	585	<div> <div style="width: 100%; height: 10px; background-color: red;"></div> <div style="width: 93%; height: 10px; background-color: green;"></div> <div style="width: 6%; height: 10px; background-color: yellow;"></div> <div style="width: 5%; height: 10px; background-color: orange;"></div> <div style="width: 5%; height: 10px; background-color: red;"></div> <div style="position: absolute; left: 50%; top: -10px;">93%</div> <div style="position: absolute; left: 95%; top: -10px;">6%</div> </div>
1	B	585	<div> <div style="width: 100%; height: 10px; background-color: red;"></div> <div style="width: 93%; height: 10px; background-color: green;"></div> <div style="width: 6%; height: 10px; background-color: yellow;"></div> <div style="width: 5%; height: 10px; background-color: orange;"></div> <div style="width: 5%; height: 10px; background-color: red;"></div> <div style="position: absolute; left: 50%; top: -10px;">93%</div> <div style="position: absolute; left: 95%; top: -10px;">6%</div> </div>

The following table lists non-polymeric compounds, carbohydrate monomers and non-standard residues in protein, DNA, RNA chains that are outliers for geometric or electron-density-fit criteria:

Mol	Type	Chain	Res	Chirality	Geometry	Clashes	Electron density
6	GOL	A	613	-	-	-	X
6	GOL	B	613	-	-	-	X

2 Entry composition

There are 7 unique types of molecules in this entry. The entry contains 9961 atoms, of which 0 are hydrogens and 0 are deuteriums.

In the tables below, the ZeroOcc column contains the number of atoms modelled with zero occupancy, the AltConf column contains the number of residues with at least one atom in alternate conformation and the Trace column contains the number of residues modelled with at most 2 atoms.

- Molecule 1 is a protein called PYRUVATE OXIDASE.

Mol	Chain	Residues	Atoms					ZeroOcc	AltConf	Trace
1	A	585	Total	C	N	O	S	0	0	0
			4524	2867	780	863	14			
1	B	585	Total	C	N	O	S	0	0	0
			4524	2867	780	863	14			

There are 6 discrepancies between the modelled and reference sequences:

Chain	Residue	Modelled	Actual	Comment	Reference
A	178	SER	PRO	CONFLICT	UNP P37063
A	188	ASN	SER	CONFLICT	UNP P37063
A	458	VAL	ALA	CONFLICT	UNP P37063
B	178	SER	PRO	CONFLICT	UNP P37063
B	188	ASN	SER	CONFLICT	UNP P37063
B	458	VAL	ALA	CONFLICT	UNP P37063

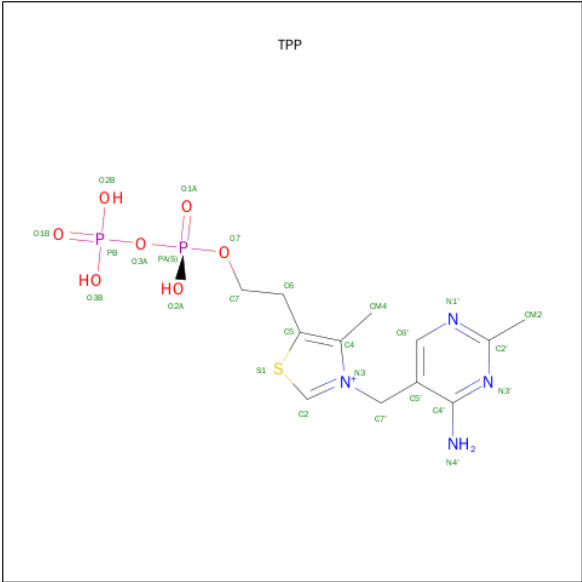
- Molecule 2 is MAGNESIUM ION (three-letter code: MG) (formula: Mg).

Mol	Chain	Residues	Atoms		ZeroOcc	AltConf
2	B	1	Total	Mg	0	0
			1	1		
2	A	1	Total	Mg	0	0
			1	1		

- Molecule 3 is SODIUM ION (three-letter code: NA) (formula: Na).

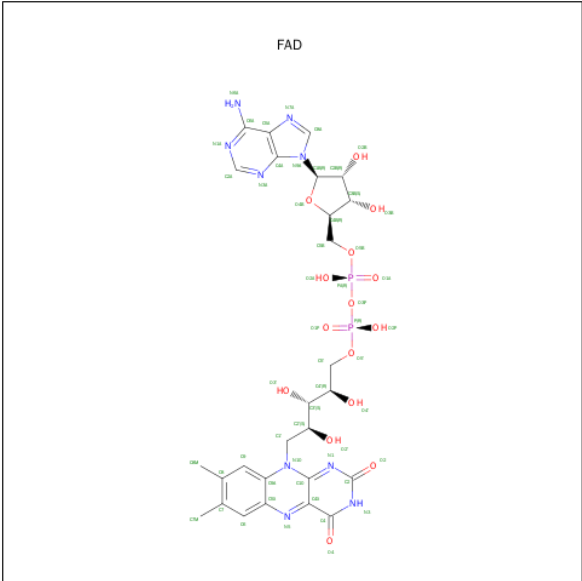
Mol	Chain	Residues	Atoms		ZeroOcc	AltConf
3	B	1	Total	Na	0	0
			1	1		
3	A	1	Total	Na	0	0
			1	1		

- Molecule 4 is THIAMINE DIPHOSPHATE (three-letter code: TPP) (formula: C₁₂H₁₉N₄O₇P₂S).



Mol	Chain	Residues	Atoms					ZeroOcc	AltConf	
4	A	1	Total	C	N	O	P	S	0	0
			26	12	4	7	2	1		
4	B	1	Total	C	N	O	P	S	0	0
			26	12	4	7	2	1		

- Molecule 5 is FLAVIN-ADENINE DINUCLEOTIDE (three-letter code: FAD) (formula: $C_{27}H_{33}N_9O_{15}P_2$).



Mol	Chain	Residues	Atoms					ZeroOcc	AltConf
5	A	1	Total	C	N	O	P	0	0
			53	27	9	15	2		

Continued on next page...

Continued from previous page...

Mol	Chain	Residues	Atoms					ZeroOcc	AltConf
5	B	1	Total	C	N	O	P	0	0
			53	27	9	15	2		

- Molecule 6 is GLYCEROL (three-letter code: GOL) (formula: $C_3H_8O_3$).



Mol	Chain	Residues	Atoms			ZeroOcc	AltConf
6	A	1	Total	C	O	0	0
			6	3	3		
6	B	1	Total	C	O	0	0
			6	3	3		

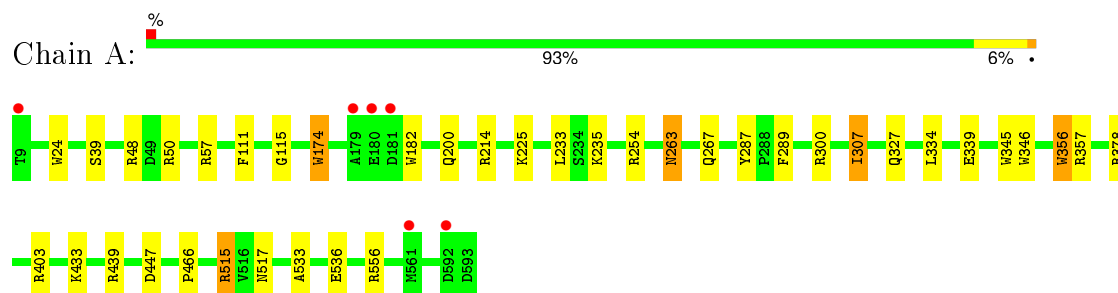
- Molecule 7 is water.

Mol	Chain	Residues	Atoms		ZeroOcc	AltConf
7	A	365	Total	O	0	0
			365	365		
7	B	374	Total	O	0	0
			374	374		

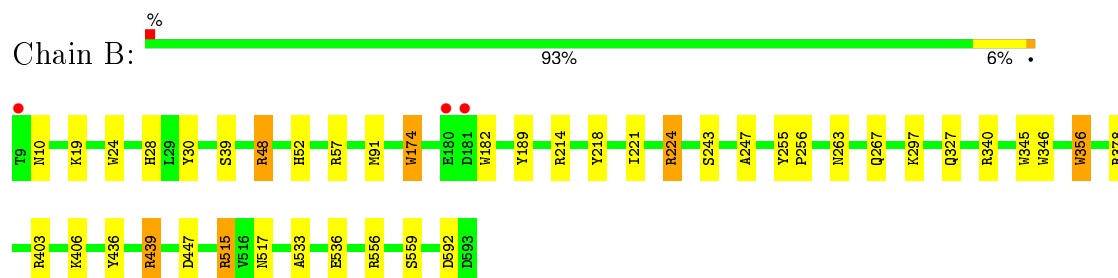
3 Residue-property plots

These plots are drawn for all protein, RNA and DNA chains in the entry. The first graphic for a chain summarises the proportions of errors displayed in the second graphic. The second graphic shows the sequence view annotated by issues in geometry and electron density. Residues are color-coded according to the number of geometric quality criteria for which they contain at least one outlier: green = 0, yellow = 1, orange = 2 and red = 3 or more. A red dot above a residue indicates a poor fit to the electron density ($\text{RSRZ} > 2$). Stretches of 2 or more consecutive residues without any outlier are shown as a green connector. Residues present in the sample, but not in the model, are shown in grey.

• Molecule 1: PYRUVATE OXIDASE



• Molecule 1: PYRUVATE OXIDASE



4 Data and refinement statistics

Property	Value	Source
Space group	C 2 2 21	Depositor
Cell constants a, b, c, α , β , γ	121.60 Å 155.40 Å 167.10 Å 90.00° 90.00° 90.00°	Depositor
Resolution (Å)	10.00 – 2.10 12.56 – 2.10	Depositor EDS
% Data completeness (in resolution range)	(Not available) (10.00-2.10) 95.8 (12.56-2.10)	Depositor EDS
R_{merge}	(Not available)	Depositor
R_{sym}	(Not available)	Depositor
$\langle I/\sigma(I) \rangle$	-	Xtriage
Refinement program	X-PLOR	Depositor
R, R_{free}	0.162 , (Not available) 0.152 , (Not available)	Depositor DCC
R_{free} test set	No test flags present.	DCC
Wilson B-factor (Å ²)	17.6	Xtriage
Anisotropy	0.132	Xtriage
Bulk solvent k_{sol} (e/Å ³), B_{sol} (Å ²)	0.39 , 82.2	EDS
Estimated twinning fraction	No twinning to report.	Xtriage
L-test for twinning ¹	$\langle L \rangle = 0.49$, $\langle L^2 \rangle = 0.32$	Xtriage
Outliers	0 of 88041 reflections	Xtriage
F_o, F_c correlation	0.96	EDS
Total number of atoms	9961	wwPDB-VP
Average B, all atoms (Å ²)	15.0	wwPDB-VP

Xtriage's analysis on translational NCS is as follows: *The largest off-origin peak in the Patterson function is 3.63% of the height of the origin peak. No significant pseudotranslation is detected.*

¹Theoretical values of $\langle |L| \rangle$, $\langle L^2 \rangle$ for acentric reflections are 0.5, 0.375 respectively for untwinned datasets, and 0.333, 0.2 for perfectly twinned datasets.

5 Model quality ⓘ

5.1 Standard geometry ⓘ

Bond lengths and bond angles in the following residue types are not validated in this section: GOL, MG, TPP, FAD, NA

The Z score for a bond length (or angle) is the number of standard deviations the observed value is removed from the expected value. A bond length (or angle) with $|Z| > 5$ is considered an outlier worth inspection. RMSZ is the root-mean-square of all Z scores of the bond lengths (or angles).

Mol	Chain	Bond lengths		Bond angles	
		RMSZ	$\# Z > 5$	RMSZ	$\# Z > 5$
1	A	0.74	0/4618	1.33	38/6286 (0.6%)
1	B	0.74	0/4618	1.31	35/6286 (0.6%)
All	All	0.74	0/9236	1.32	73/12572 (0.6%)

There are no bond length outliers.

All (73) bond angle outliers are listed below:

Mol	Chain	Res	Type	Atoms	Z	Observed(°)	Ideal(°)
1	A	515	ARG	NE-CZ-NH2	-14.66	112.97	120.30
1	B	515	ARG	NE-CZ-NH1	13.74	127.17	120.30
1	A	515	ARG	NE-CZ-NH1	13.73	127.17	120.30
1	B	439	ARG	NE-CZ-NH1	11.67	126.14	120.30
1	B	515	ARG	NE-CZ-NH2	-11.18	114.71	120.30
1	B	439	ARG	NE-CZ-NH2	-9.97	115.31	120.30
1	B	447	ASP	CB-CG-OD1	8.85	126.26	118.30
1	A	356	TRP	CD1-CG-CD2	8.64	113.21	106.30
1	A	182	TRP	CD1-CG-CD2	8.46	113.07	106.30
1	A	439	ARG	NE-CZ-NH2	-8.11	116.25	120.30
1	B	346	TRP	CD1-CG-CD2	8.08	112.77	106.30
1	B	345	TRP	CD1-CG-CD2	8.08	112.76	106.30
1	A	447	ASP	CB-CG-OD1	7.90	125.41	118.30
1	A	356	TRP	CE2-CD2-CG	-7.85	101.02	107.30
1	B	345	TRP	CE2-CD2-CG	-7.74	101.11	107.30
1	B	356	TRP	CD1-CG-CD2	7.74	112.49	106.30
1	A	439	ARG	NE-CZ-NH1	7.71	124.16	120.30
1	A	345	TRP	CD1-CG-CD2	7.65	112.42	106.30
1	B	182	TRP	CD1-CG-CD2	7.64	112.41	106.30
1	A	300	ARG	NE-CZ-NH2	-7.60	116.50	120.30
1	A	556	ARG	NE-CZ-NH1	7.60	124.10	120.30
1	A	346	TRP	CD1-CG-CD2	7.44	112.25	106.30

Continued on next page...

Continued from previous page...

Mol	Chain	Res	Type	Atoms	Z	Observed(°)	Ideal(°)
1	B	24	TRP	CD1-CG-CD2	7.42	112.24	106.30
1	B	356	TRP	CE2-CD2-CG	-7.25	101.50	107.30
1	A	345	TRP	CE2-CD2-CG	-7.22	101.52	107.30
1	A	182	TRP	CE2-CD2-CG	-6.98	101.72	107.30
1	A	174	TRP	CD1-CG-CD2	6.93	111.84	106.30
1	A	403	ARG	NE-CZ-NH2	-6.85	116.88	120.30
1	B	182	TRP	CE2-CD2-CG	-6.81	101.86	107.30
1	A	346	TRP	CE2-CD2-CG	-6.80	101.86	107.30
1	A	214	ARG	NE-CZ-NH1	6.78	123.69	120.30
1	A	174	TRP	CE2-CD2-CG	-6.78	101.88	107.30
1	B	346	TRP	CE2-CD2-CG	-6.73	101.92	107.30
1	B	174	TRP	CD1-CG-CD2	6.69	111.65	106.30
1	B	91	MET	CG-SD-CE	-6.56	89.71	100.20
1	A	300	ARG	NE-CZ-NH1	6.55	123.57	120.30
1	B	24	TRP	CE2-CD2-CG	-6.53	102.08	107.30
1	B	214	ARG	NE-CZ-NH2	-6.50	117.05	120.30
1	A	235	LYS	CA-CB-CG	6.42	127.52	113.40
1	B	378	ARG	NE-CZ-NH1	6.36	123.48	120.30
1	A	356	TRP	CB-CG-CD1	-6.28	118.84	127.00
1	B	340	ARG	NE-CZ-NH2	-6.23	117.18	120.30
1	A	48	ARG	NE-CZ-NH1	6.17	123.39	120.30
1	B	57	ARG	NE-CZ-NH1	6.16	123.38	120.30
1	A	403	ARG	NE-CZ-NH1	6.13	123.36	120.30
1	B	189	TYR	CB-CG-CD2	-6.12	117.33	121.00
1	B	346	TRP	CG-CD1-NE1	-6.01	104.09	110.10
1	A	24	TRP	CD1-CG-CD2	5.99	111.09	106.30
1	A	24	TRP	CE2-CD2-CG	-5.97	102.52	107.30
1	A	174	TRP	CG-CD2-CE3	5.96	139.26	133.90
1	B	356	TRP	CB-CG-CD1	-5.94	119.28	127.00
1	A	345	TRP	CG-CD2-CE3	5.93	139.24	133.90
1	B	19	LYS	CA-CB-CG	-5.92	100.37	113.40
1	B	174	TRP	CE2-CD2-CG	-5.87	102.61	107.30
1	A	378	ARG	NE-CZ-NH2	-5.76	117.42	120.30
1	B	556	ARG	NE-CZ-NH1	5.71	123.15	120.30
1	A	307	ILE	CB-CG1-CD1	-5.61	98.19	113.90
1	B	403	ARG	NE-CZ-NH2	-5.56	117.52	120.30
1	A	345	TRP	CB-CG-CD1	-5.54	119.80	127.00
1	B	48	ARG	NE-CZ-NH1	5.52	123.06	120.30
1	A	182	TRP	CG-CD1-NE1	-5.52	104.58	110.10
1	A	50	ARG	NE-CZ-NH2	-5.51	117.55	120.30
1	B	345	TRP	CG-CD1-NE1	-5.51	104.59	110.10
1	B	345	TRP	CG-CD2-CE3	5.49	138.84	133.90

Continued on next page...

Continued from previous page...

Mol	Chain	Res	Type	Atoms	Z	Observed(°)	Ideal(°)
1	B	345	TRP	CB-CG-CD1	-5.44	119.93	127.00
1	A	254	ARG	NE-CZ-NH1	5.20	122.90	120.30
1	A	346	TRP	CB-CG-CD1	-5.20	120.25	127.00
1	B	30	TYR	CB-CG-CD2	-5.16	117.91	121.00
1	A	357	ARG	NE-CZ-NH1	5.15	122.88	120.30
1	B	218	TYR	CB-CG-CD2	-5.05	117.97	121.00
1	B	182	TRP	CG-CD1-NE1	-5.04	105.06	110.10
1	A	356	TRP	CG-CD1-NE1	-5.04	105.06	110.10
1	A	174	TRP	CB-CG-CD1	-5.03	120.47	127.00

There are no chirality outliers.

There are no planarity outliers.

5.2 Too-close contacts ⓘ

In the following table, the Non-H and H(model) columns list the number of non-hydrogen atoms and hydrogen atoms in the chain respectively. The H(added) column lists the number of hydrogen atoms added and optimized by MolProbity. The Clashes column lists the number of clashes within the asymmetric unit, whereas Symm-Clashes lists symmetry related clashes.

Mol	Chain	Non-H	H(model)	H(added)	Clashes	Symm-Clashes
1	A	4524	0	4470	9	0
1	B	4524	0	4470	11	0
2	A	1	0	0	0	0
2	B	1	0	0	0	0
3	A	1	0	0	0	0
3	B	1	0	0	0	0
4	A	26	0	16	0	0
4	B	26	0	16	0	0
5	A	53	0	31	0	0
5	B	53	0	31	0	0
6	A	6	0	8	0	0
6	B	6	0	8	0	0
7	A	365	0	0	1	0
7	B	374	0	0	1	0
All	All	9961	0	9050	20	0

The all-atom clashscore is defined as the number of clashes found per 1000 atoms (including hydrogen atoms). The all-atom clashscore for this structure is 1.

All (20) close contacts within the same asymmetric unit are listed below, sorted by their clash magnitude.

Atom-1	Atom-2	Interatomic distance (Å)	Clash overlap (Å)
1:B:267:GLN:HE21	1:B:356:TRP:HE1	1.34	0.75
1:A:233:LEU:HD13	1:A:334:LEU:HD13	1.81	0.61
1:A:267:GLN:HE21	1:A:356:TRP:HE1	1.51	0.58
1:A:433:LYS:HE2	1:A:466:PRO:HD2	1.86	0.58
1:A:57:ARG:HD3	7:A:632:HOH:O	2.06	0.55
1:B:436:TYR:HB3	1:B:439:ARG:HG3	1.90	0.53
1:B:243:SER:HB2	1:B:247:ALA:HB3	1.95	0.47
1:B:267:GLN:NE2	1:B:356:TRP:HE1	2.09	0.46
1:B:297:LYS:HB2	1:B:297:LYS:HE3	1.77	0.44
1:A:111:PHE:CE1	1:A:115:GLY:HA3	2.53	0.44
1:A:39:SER:HB3	1:A:174:TRP:CD2	2.52	0.43
1:B:255:TYR:HA	1:B:256:PRO:HD3	1.88	0.43
1:B:221:ILE:O	1:B:224:ARG:HB2	2.19	0.43
1:B:28:HIS:HA	1:B:52:HIS:O	2.19	0.42
1:A:263:ASN:HB2	1:A:287:TYR:OH	2.19	0.42
1:B:533:ALA:HA	1:B:536:GLU:O	2.20	0.42
1:B:39:SER:HB3	1:B:174:TRP:CD2	2.55	0.41
1:A:287:TYR:CZ	1:A:289:PHE:HB2	2.55	0.41
1:B:406:LYS:HE3	7:B:754:HOH:O	2.20	0.40
1:A:533:ALA:HA	1:A:536:GLU:O	2.21	0.40

There are no symmetry-related clashes.

5.3 Torsion angles [i](#)

5.3.1 Protein backbone [i](#)

In the following table, the Percentiles column shows the percent Ramachandran outliers of the chain as a percentile score with respect to all X-ray entries followed by that with respect to entries of similar resolution.

The Analysed column shows the number of residues for which the backbone conformation was analysed, and the total number of residues.

Mol	Chain	Analysed	Favoured	Allowed	Outliers	Percentiles	
1	A	583/585 (100%)	568 (97%)	14 (2%)	1 (0%)	52	53
1	B	583/585 (100%)	571 (98%)	11 (2%)	1 (0%)	52	53
All	All	1166/1170 (100%)	1139 (98%)	25 (2%)	2 (0%)	52	53

All (2) Ramachandran outliers are listed below:

Mol	Chain	Res	Type
1	A	263	ASN
1	B	263	ASN

5.3.2 Protein sidechains ⓘ

In the following table, the Percentiles column shows the percent sidechain outliers of the chain as a percentile score with respect to all X-ray entries followed by that with respect to entries of similar resolution.

The Analysed column shows the number of residues for which the sidechain conformation was analysed, and the total number of residues.

Mol	Chain	Analysed	Rotameric	Outliers	Percentiles	
1	A	471/471 (100%)	464 (98%)	7 (2%)	72	78
1	B	471/471 (100%)	463 (98%)	8 (2%)	68	74
All	All	942/942 (100%)	927 (98%)	15 (2%)	70	76

All (15) residues with a non-rotameric sidechain are listed below:

Mol	Chain	Res	Type
1	A	200	GLN
1	A	225	LYS
1	A	307	ILE
1	A	327	GLN
1	A	339	GLU
1	A	515	ARG
1	A	517	ASN
1	B	10	ASN
1	B	48	ARG
1	B	224	ARG
1	B	327	GLN
1	B	515	ARG
1	B	517	ASN
1	B	559	SER
1	B	592	ASP

Some sidechains can be flipped to improve hydrogen bonding and reduce clashes. All (13) such sidechains are listed below:

Mol	Chain	Res	Type
1	A	148	HIS
1	A	200	GLN

Continued on next page...

Continued from previous page...

Mol	Chain	Res	Type
1	A	267	GLN
1	A	276	GLN
1	A	316	HIS
1	A	464	HIS
1	B	52	HIS
1	B	267	GLN
1	B	276	GLN
1	B	316	HIS
1	B	347	GLN
1	B	476	GLN
1	B	517	ASN

5.3.3 RNA [i](#)

There are no RNA molecules in this entry.

5.4 Non-standard residues in protein, DNA, RNA chains [i](#)

There are no non-standard protein/DNA/RNA residues in this entry.

5.5 Carbohydrates [i](#)

There are no carbohydrates in this entry.

5.6 Ligand geometry [i](#)

Of 10 ligands modelled in this entry, 4 are monoatomic - leaving 6 for Mogul analysis.

In the following table, the Counts columns list the number of bonds (or angles) for which Mogul statistics could be retrieved, the number of bonds (or angles) that are observed in the model and the number of bonds (or angles) that are defined in the chemical component dictionary. The Link column lists molecule types, if any, to which the group is linked. The Z score for a bond length (or angle) is the number of standard deviations the observed value is removed from the expected value. A bond length (or angle) with $|Z| > 2$ is considered an outlier worth inspection. RMSZ is the root-mean-square of all Z scores of the bond lengths (or angles).

Mol	Type	Chain	Res	Link	Bond lengths			Bond angles		
					Counts	RMSZ	# $ Z > 2$	Counts	RMSZ	# $ Z > 2$
4	TPP	A	611	2	20,27,27	1.79	3 (15%)	31,40,40	1.62	6 (19%)
5	FAD	A	612	-	48,58,58	1.05	2 (4%)	54,89,89	1.74	6 (11%)

Mol	Type	Chain	Res	Link	Bond lengths			Bond angles		
					Counts	RMSZ	# Z > 2	Counts	RMSZ	# Z > 2
6	GOL	A	613	-	5,5,5	0.78	0	5,5,5	0.79	0
4	TPP	B	611	2	20,27,27	1.92	4 (20%)	31,40,40	1.48	6 (19%)
5	FAD	B	612	-	48,58,58	1.17	3 (6%)	54,89,89	1.74	6 (11%)
6	GOL	B	613	-	5,5,5	0.60	0	5,5,5	0.77	0

In the following table, the Chirals column lists the number of chiral outliers, the number of chiral centers analysed, the number of these observed in the model and the number defined in the chemical component dictionary. Similar counts are reported in the Torsion and Rings columns. '-' means no outliers of that kind were identified.

Mol	Type	Chain	Res	Link	Chirals	Torsions	Rings
4	TPP	A	611	2	-	0/16/17/17	0/2/2/2
5	FAD	A	612	-	-	0/30/50/50	0/6/6/6
6	GOL	A	613	-	-	0/4/4/4	0/0/0/0
4	TPP	B	611	2	-	0/16/17/17	0/2/2/2
5	FAD	B	612	-	-	0/30/50/50	0/6/6/6
6	GOL	B	613	-	-	0/4/4/4	0/0/0/0

All (12) bond length outliers are listed below:

Mol	Chain	Res	Type	Atoms	Z	Observed(Å)	Ideal(Å)
4	B	611	TPP	C4-N3	-6.33	1.34	1.39
4	A	611	TPP	C4-N3	-5.97	1.34	1.39
4	B	611	TPP	PA-O2A	-2.47	1.44	1.54
4	A	611	TPP	PB-O2B	-2.38	1.46	1.54
5	B	612	FAD	P-O2P	-2.28	1.45	1.54
4	A	611	TPP	PA-O2A	-2.26	1.45	1.54
4	B	611	TPP	PB-O1B	-2.20	1.43	1.51
4	B	611	TPP	PB-O2B	-2.15	1.47	1.54
5	B	612	FAD	C4-C4X	2.06	1.45	1.41
5	A	612	FAD	C4-C4X	2.08	1.45	1.41
5	A	612	FAD	C4-N3	2.64	1.38	1.33
5	B	612	FAD	C4-N3	3.97	1.40	1.33

All (24) bond angle outliers are listed below:

Mol	Chain	Res	Type	Atoms	Z	Observed(°)	Ideal(°)
5	A	612	FAD	C4X-C4-N3	-6.23	115.08	123.59
5	B	612	FAD	C4X-C4-N3	-5.58	115.96	123.59
5	B	612	FAD	C4X-C10-N10	-3.37	118.53	120.52
4	A	611	TPP	CM4-C4-C5	-3.14	121.85	128.90
4	B	611	TPP	N1'-C2'-N3'	-2.68	120.64	125.60

Continued on next page...

Continued from previous page...

Mol	Chain	Res	Type	Atoms	Z	Observed(°)	Ideal(°)
4	A	611	TPP	C5'-C6'-N1'	-2.62	119.31	123.86
5	A	612	FAD	C4A-C5A-N7A	-2.61	107.08	109.48
4	B	611	TPP	CM4-C4-C5	-2.56	123.14	128.90
4	B	611	TPP	C5'-C6'-N1'	-2.51	119.50	123.86
4	A	611	TPP	N1'-C2'-N3'	-2.35	121.25	125.60
5	B	612	FAD	C4A-C5A-N7A	-2.12	107.53	109.48
4	B	611	TPP	CM2-C2'-N1'	2.04	119.48	117.03
5	A	612	FAD	C4X-N5-C5X	2.41	119.54	116.76
5	B	612	FAD	N3A-C2A-N1A	2.57	130.86	128.89
5	A	612	FAD	C1'-N10-C9A	2.58	121.76	118.86
4	A	611	TPP	CM2-C2'-N1'	2.67	120.23	117.03
4	B	611	TPP	C5-C4-N3	2.87	114.01	107.69
5	B	612	FAD	C1'-N10-C9A	2.95	122.18	118.86
4	A	611	TPP	C5-C4-N3	3.10	114.51	107.69
4	A	611	TPP	C6'-N1'-C2'	3.18	121.33	115.77
4	B	611	TPP	C6'-N1'-C2'	3.46	121.82	115.77
5	A	612	FAD	N3A-C2A-N1A	3.66	131.70	128.89
5	B	612	FAD	C4-N3-C2	7.68	121.89	115.25
5	A	612	FAD	C4-N3-C2	7.69	121.90	115.25

There are no chirality outliers.

There are no torsion outliers.

There are no ring outliers.

No monomer is involved in short contacts.

5.7 Other polymers [i](#)

There are no such residues in this entry.

5.8 Polymer linkage issues [i](#)

There are no chain breaks in this entry.

6 Fit of model and data [i](#)

6.1 Protein, DNA and RNA chains [i](#)

In the following table, the column labelled ‘#RSRZ> 2’ contains the number (and percentage) of RSRZ outliers, followed by percent RSRZ outliers for the chain as percentile scores relative to all X-ray entries and entries of similar resolution. The OWAB column contains the minimum, median, 95th percentile and maximum values of the occupancy-weighted average B-factor per residue. The column labelled ‘Q< 0.9’ lists the number of (and percentage) of residues with an average occupancy less than 0.9.

Mol	Chain	Analysed	<RSRZ>	#RSRZ>2	OWAB(Å ²)	Q<0.9
1	A	585/585 (100%)	-0.78	6 (1%) 84 87	5, 12, 28, 44	0
1	B	585/585 (100%)	-0.80	3 (0%) 91 93	4, 12, 27, 42	0
All	All	1170/1170 (100%)	-0.79	9 (0%) 87 90	4, 12, 28, 44	0

All (9) RSRZ outliers are listed below:

Mol	Chain	Res	Type	RSRZ
1	B	9	THR	4.0
1	A	9	THR	3.9
1	A	180	GLU	3.6
1	A	592	ASP	3.1
1	B	180	GLU	3.0
1	A	181	ASP	2.9
1	A	179	ALA	2.7
1	A	561	MET	2.3
1	B	181	ASP	2.1

6.2 Non-standard residues in protein, DNA, RNA chains [i](#)

There are no non-standard protein/DNA/RNA residues in this entry.

6.3 Carbohydrates [i](#)

There are no carbohydrates in this entry.

6.4 Ligands [i](#)

In the following table, the Atoms column lists the number of modelled atoms in the group and the number defined in the chemical component dictionary. LLDF column lists the quality of electron

density of the group with respect to its neighbouring residues in protein, DNA or RNA chains. The B-factors column lists the minimum, median, 95th percentile and maximum values of B factors of atoms in the group. The column labelled 'Q< 0.9' lists the number of atoms with occupancy less than 0.9.

Mol	Type	Chain	Res	Atoms	RSCC	RSR	LLDF	B-factors(Å ²)	Q<0.9
6	GOL	A	613	6/6	0.92	0.16	9.30	18,21,22,24	0
6	GOL	B	613	6/6	0.92	0.15	5.10	21,23,24,25	0
5	FAD	B	612	53/53	0.98	0.06	-0.13	7,10,12,13	0
4	TPP	A	611	26/26	0.98	0.06	-0.36	4,9,11,11	0
4	TPP	B	611	26/26	0.99	0.06	-0.42	8,9,11,11	0
5	FAD	A	612	53/53	0.98	0.06	-0.43	6,10,12,12	0
2	MG	B	610	1/1	0.96	0.05	-1.73	3,3,3,3	0
2	MG	A	610	1/1	0.97	0.04	-2.86	3,3,3,3	0
3	NA	B	614	1/1	1.00	0.19	-	11,11,11,11	1
3	NA	A	614	1/1	1.00	0.20	-	11,11,11,11	1

6.5 Other polymers

There are no such residues in this entry.