



Full wwPDB X-ray Structure Validation Report ⓘ

Feb 1, 2016 – 11:44 AM GMT

PDB ID : 3PRF
Title : Crystal Structure of Human B-Raf Kinase Domain in Complex with a Non-Oxime Furopyridine Inhibitor
Authors : Voegtli, W.C.; Vigers, G.P.A.; Morales, T.; Brandhuber, B.J.
Deposited on : 2010-11-29
Resolution : 2.90 Å(reported)

This is a Full wwPDB X-ray Structure Validation Report for a publicly released PDB entry.
We welcome your comments at validation@mail.wwpdb.org
A user guide is available at
<http://wwpdb.org/validation/2016/XrayValidationReportHelp>
with specific help available everywhere you see the ⓘ symbol.

The following versions of software and data (see [references ⓘ](#)) were used in the production of this report:

MolProbity : 4.02b-467
Mogul : 1.7 (RC4), CSD as536be (2015)
Xtriage (Phenix) : 1.9-1692
EDS : rb-20026688
Percentile statistics : 20151230.v01 (using entries in the PDB archive December 30th 2015)
Refmac : 5.8.0135
CCP4 : 6.5.0
Ideal geometry (proteins) : Engh & Huber (2001)
Ideal geometry (DNA, RNA) : Parkinson et al. (1996)
Validation Pipeline (wwPDB-VP) : trunk26865

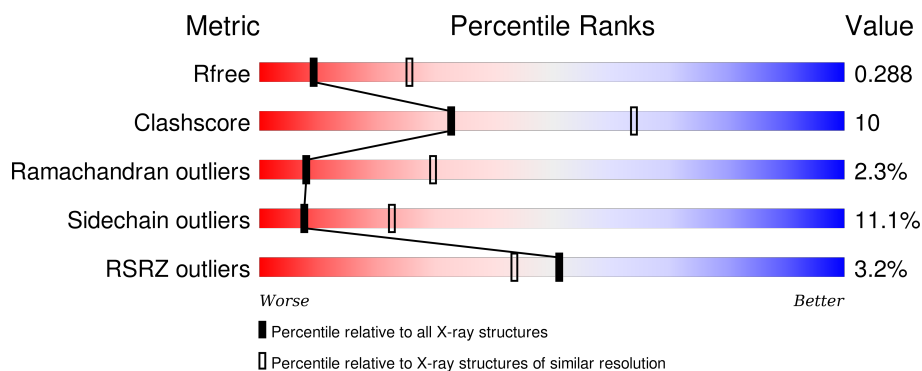
1 Overall quality at a glance

The following experimental techniques were used to determine the structure:

X-RAY DIFFRACTION

The reported resolution of this entry is 2.90 Å.

Percentile scores (ranging between 0-100) for global validation metrics of the entry are shown in the following graphic. The table shows the number of entries on which the scores are based.



Metric	Whole archive (#Entries)	Similar resolution (#Entries, resolution range(Å))
R_{free}	91344	1451 (2.90-2.90)
Clashscore	102246	1668 (2.90-2.90)
Ramachandran outliers	100387	1630 (2.90-2.90)
Sidechain outliers	100360	1632 (2.90-2.90)
RSRZ outliers	91569	1456 (2.90-2.90)

The table below summarises the geometric issues observed across the polymeric chains and their fit to the electron density. The red, orange, yellow and green segments on the lower bar indicate the fraction of residues that contain outliers for ≥ 3 , 2, 1 and 0 types of geometric quality criteria. A grey segment represents the fraction of residues that are not modelled. The numeric value for each fraction is indicated below the corresponding segment, with a dot representing fractions $\leq 5\%$. The upper red bar (where present) indicates the fraction of residues that have poor fit to the electron density. The numeric value is given above the bar.

Mol	Chain	Length	Quality of chain
1	A	307	
1	B	307	

2 Entry composition

There are 2 unique types of molecules in this entry. The entry contains 4234 atoms, of which 0 are hydrogens and 0 are deuteriums.

In the tables below, the ZeroOcc column contains the number of atoms modelled with zero occupancy, the AltConf column contains the number of residues with at least one atom in alternate conformation and the Trace column contains the number of residues modelled with at most 2 atoms.

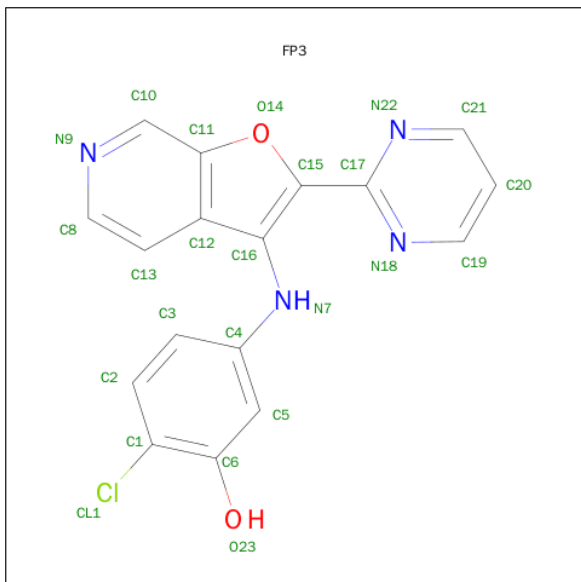
- Molecule 1 is a protein called Serine/threonine-protein kinase B-raf.

Mol	Chain	Residues	Atoms					ZeroOcc	AltConf	Trace
1	A	262	Total	C	N	O	S	0	0	0
			2093	1343	364	373	13			
1	B	262	Total	C	N	O	S	0	0	0
			2093	1343	364	373	13			

There are 24 discrepancies between the modelled and reference sequences:

Chain	Residue	Modelled	Actual	Comment	Reference
A	420	MET	-	EXPRESSION TAG	UNP P15056
A	421	ASP	-	EXPRESSION TAG	UNP P15056
A	422	ARG	-	EXPRESSION TAG	UNP P15056
A	423	GLY	-	EXPRESSION TAG	UNP P15056
A	424	SER	-	EXPRESSION TAG	UNP P15056
A	425	HIS	-	EXPRESSION TAG	UNP P15056
A	426	HIS	-	EXPRESSION TAG	UNP P15056
A	427	HIS	-	EXPRESSION TAG	UNP P15056
A	428	HIS	-	EXPRESSION TAG	UNP P15056
A	429	HIS	-	EXPRESSION TAG	UNP P15056
A	430	HIS	-	EXPRESSION TAG	UNP P15056
A	431	GLY	-	EXPRESSION TAG	UNP P15056
B	420	MET	-	EXPRESSION TAG	UNP P15056
B	421	ASP	-	EXPRESSION TAG	UNP P15056
B	422	ARG	-	EXPRESSION TAG	UNP P15056
B	423	GLY	-	EXPRESSION TAG	UNP P15056
B	424	SER	-	EXPRESSION TAG	UNP P15056
B	425	HIS	-	EXPRESSION TAG	UNP P15056
B	426	HIS	-	EXPRESSION TAG	UNP P15056
B	427	HIS	-	EXPRESSION TAG	UNP P15056
B	428	HIS	-	EXPRESSION TAG	UNP P15056
B	429	HIS	-	EXPRESSION TAG	UNP P15056
B	430	HIS	-	EXPRESSION TAG	UNP P15056
B	431	GLY	-	EXPRESSION TAG	UNP P15056

- Molecule 2 is 2-CHLORO-5--[2-(PYRIMIDIN-2-YL)FURO[2,3-C]PYRIDIN-3-YL]AMINO} PHENOL (three-letter code: FP3) (formula: C₁₇H₁₁ClN₄O₂).

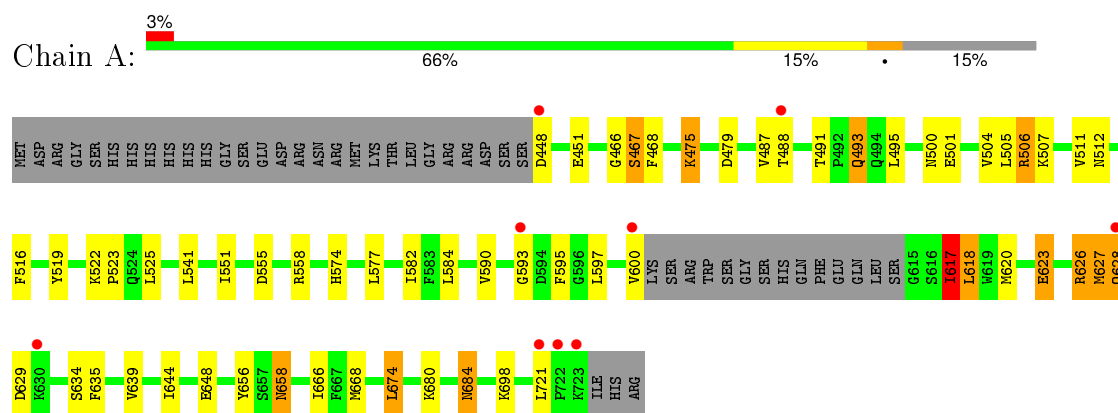


Mol	Chain	Residues	Atoms					ZeroOcc	AltConf
2	A	1	Total	C	Cl	N	O	0	0
			24	17	1	4	2		
2	B	1	Total	C	Cl	N	O	0	0
			24	17	1	4	2		

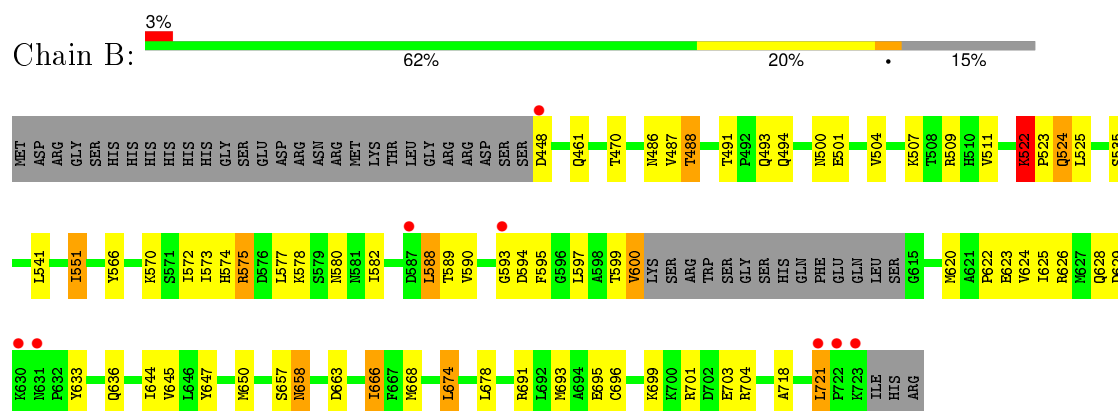
3 Residue-property plots

These plots are drawn for all protein, RNA and DNA chains in the entry. The first graphic for a chain summarises the proportions of errors displayed in the second graphic. The second graphic shows the sequence view annotated by issues in geometry and electron density. Residues are color-coded according to the number of geometric quality criteria for which they contain at least one outlier: green = 0, yellow = 1, orange = 2 and red = 3 or more. A red dot above a residue indicates a poor fit to the electron density ($\text{RSRZ} > 2$). Stretches of 2 or more consecutive residues without any outlier are shown as a green connector. Residues present in the sample, but not in the model, are shown in grey.

- Molecule 1: Serine/threonine-protein kinase B-raf



- Molecule 1: Serine/threonine-protein kinase B-raf



4 Data and refinement statistics

Property	Value	Source
Space group	P 41 21 2	Depositor
Cell constants a, b, c, α , β , γ	100.19Å 100.19Å 164.61Å 90.00° 90.00° 90.00°	Depositor
Resolution (Å)	25.00 – 2.90 44.81 – 2.90	Depositor EDS
% Data completeness (in resolution range)	100.0 (25.00-2.90) 99.5 (44.81-2.90)	Depositor EDS
R_{merge}	(Not available)	Depositor
R_{sym}	(Not available)	Depositor
$\langle I/\sigma(I) \rangle$ ¹	2.60 (at 2.90Å)	Xtriage
Refinement program	REFMAC 5.2.0019	Depositor
R, R_{free}	0.269 , 0.310 0.242 , 0.288	Depositor DCC
R_{free} test set	979 reflections (5.41%)	DCC
Wilson B-factor (Å ²)	67.9	Xtriage
Anisotropy	0.088	Xtriage
Bulk solvent k_{sol} (e/Å ³), B_{sol} (Å ²)	0.31 , 23.3	EDS
Estimated twinning fraction	No twinning to report.	Xtriage
L-test for twinning ²	$\langle L \rangle = 0.51$, $\langle L^2 \rangle = 0.35$	Xtriage
Outliers	1 of 19108 reflections (0.005%)	Xtriage
F_o, F_c correlation	0.92	EDS
Total number of atoms	4234	wwPDB-VP
Average B, all atoms (Å ²)	62.0	wwPDB-VP

Xtriage's analysis on translational NCS is as follows: *The largest off-origin peak in the Patterson function is 5.35% of the height of the origin peak. No significant pseudotranslation is detected.*

¹Intensities estimated from amplitudes.

²Theoretical values of $\langle |L| \rangle$, $\langle L^2 \rangle$ for acentric reflections are 0.5, 0.375 respectively for untwinned datasets, and 0.333, 0.2 for perfectly twinned datasets.

5 Model quality

5.1 Standard geometry

Bond lengths and bond angles in the following residue types are not validated in this section: FP3

The Z score for a bond length (or angle) is the number of standard deviations the observed value is removed from the expected value. A bond length (or angle) with $|Z| > 5$ is considered an outlier worth inspection. RMSZ is the root-mean-square of all Z scores of the bond lengths (or angles).

Mol	Chain	Bond lengths		Bond angles	
		RMSZ	$\# Z > 5$	RMSZ	$\# Z > 5$
1	A	0.49	0/2138	0.69	2/2886 (0.1%)
1	B	0.48	0/2138	0.64	1/2886 (0.0%)
All	All	0.48	0/4276	0.67	3/5772 (0.1%)

Chiral center outliers are detected by calculating the chiral volume of a chiral center and verifying if the center is modelled as a planar moiety or with the opposite hand. A planarity outlier is detected by checking planarity of atoms in a peptide group, atoms in a mainchain group or atoms of a sidechain that are expected to be planar.

Mol	Chain	#Chirality outliers	#Planarity outliers
1	A	0	1
1	B	0	1
All	All	0	2

There are no bond length outliers.

All (3) bond angle outliers are listed below:

Mol	Chain	Res	Type	Atoms	Z	Observed($^{\circ}$)	Ideal($^{\circ}$)
1	A	617	ILE	N-CA-C	5.83	126.73	111.00
1	A	593	GLY	N-CA-C	5.52	126.89	113.10
1	B	588	LEU	CA-CB-CG	5.07	126.96	115.30

There are no chirality outliers.

All (2) planarity outliers are listed below:

Mol	Chain	Res	Type	Group
1	A	617	ILE	Peptide
1	B	522	LYS	Peptide

5.2 Too-close contacts ⓘ

In the following table, the Non-H and H(model) columns list the number of non-hydrogen atoms and hydrogen atoms in the chain respectively. The H(added) column lists the number of hydrogen atoms added and optimized by MolProbity. The Clashes column lists the number of clashes within the asymmetric unit, whereas Symm-Clashes lists symmetry related clashes.

Mol	Chain	Non-H	H(model)	H(added)	Clashes	Symm-Clashes
1	A	2093	0	2135	38	0
1	B	2093	0	2135	45	0
2	A	24	0	11	3	0
2	B	24	0	11	4	0
All	All	4234	0	4292	89	0

The all-atom clashscore is defined as the number of clashes found per 1000 atoms (including hydrogen atoms). The all-atom clashscore for this structure is 10.

All (89) close contacts within the same asymmetric unit are listed below, sorted by their clash magnitude.

Atom-1	Atom-2	Interatomic distance (Å)	Clash overlap (Å)
1:B:575:ARG:NH1	1:B:597:LEU:HA	1.58	1.15
1:A:506:ARG:HG3	1:A:506:ARG:HH11	1.32	0.94
1:B:575:ARG:HH11	1:B:597:LEU:HA	1.28	0.90
1:B:658:ASN:H	1:B:658:ASN:HD22	1.13	0.89
2:B:727:FP3:C3	2:B:727:FP3:H13	2.03	0.88
1:A:658:ASN:HD22	1:A:658:ASN:H	1.21	0.86
1:A:574:HIS:HA	1:A:597:LEU:HD22	1.60	0.83
1:A:626:ARG:O	1:A:628:GLN:N	2.15	0.80
1:B:658:ASN:N	1:B:658:ASN:HD22	1.82	0.78
1:B:504:VAL:HG11	1:B:597:LEU:HD21	1.67	0.76
1:B:650:MET:HG3	1:B:693:MET:HE1	1.67	0.75
1:A:475:LYS:HE2	1:A:479:ASP:HB3	1.67	0.75
1:B:620:MET:CE	1:B:624:VAL:HG12	2.17	0.74
1:B:574:HIS:HA	1:B:597:LEU:HD12	1.68	0.74
2:B:727:FP3:C13	2:B:727:FP3:H3	2.18	0.73
1:B:658:ASN:H	1:B:658:ASN:ND2	1.88	0.71
1:A:525:LEU:H	1:A:525:LEU:HD12	1.55	0.70
2:B:727:FP3:H13	2:B:727:FP3:H3	1.73	0.69
1:A:506:ARG:CG	1:A:506:ARG:HH11	2.04	0.68
1:A:501:GLU:HG3	1:A:595:PHE:HB2	1.76	0.67
1:A:506:ARG:NH1	1:A:506:ARG:HG3	2.08	0.67
2:B:727:FP3:C3	2:B:727:FP3:C13	2.73	0.66
1:B:620:MET:HE2	1:B:624:VAL:HG12	1.78	0.66

Continued on next page...

Continued from previous page...

Atom-1	Atom-2	Interatomic distance (Å)	Clash overlap (Å)
1:A:595:PHE:CD2	1:A:597:LEU:HD21	2.31	0.66
1:B:718:ALA:HA	1:B:721:LEU:HD23	1.78	0.65
1:B:487:VAL:HG12	1:B:487:VAL:O	1.99	0.62
1:A:617:ILE:HG13	1:A:618:LEU:HB2	1.81	0.62
1:B:578:LYS:HD2	1:B:580:ASN:HD22	1.64	0.62
1:B:574:HIS:HA	1:B:597:LEU:CD1	2.30	0.61
1:B:599:THR:HG22	1:B:600:VAL:H	1.66	0.60
1:B:620:MET:HE3	1:B:624:VAL:HG12	1.84	0.59
1:A:626:ARG:O	1:A:626:ARG:HG3	2.02	0.58
1:A:551:ILE:HD12	1:A:551:ILE:H	1.69	0.58
1:B:507:LYS:O	1:B:570:LYS:HE2	2.03	0.57
1:A:595:PHE:HD2	1:A:597:LEU:HD21	1.70	0.56
1:B:622:PRO:HA	1:B:625:ILE:HG22	1.88	0.56
1:A:466:GLY:O	1:A:467:SER:C	2.45	0.55
1:B:593:GLY:HA2	1:B:595:PHE:HE1	1.71	0.55
1:B:599:THR:HG22	1:B:600:VAL:N	2.22	0.55
1:A:684:ASN:HD22	1:A:684:ASN:H	1.55	0.54
2:A:727:FP3:H13	2:A:727:FP3:C3	2.37	0.54
1:B:491:THR:HB	1:B:494:GLN:H	1.72	0.54
1:B:582:ILE:HG23	1:B:590:VAL:HG13	1.88	0.54
1:B:658:ASN:ND2	1:B:658:ASN:N	2.54	0.53
1:A:597:LEU:HD12	1:A:597:LEU:C	2.29	0.53
1:A:628:GLN:HG3	1:A:628:GLN:O	2.09	0.52
1:A:684:ASN:N	1:A:684:ASN:HD22	2.09	0.51
1:A:617:ILE:O	1:A:620:MET:HB2	2.10	0.51
1:B:551:ILE:HD12	1:B:551:ILE:H	1.76	0.51
1:B:636:GLN:HG2	1:B:701:ARG:O	2.11	0.50
1:B:644:ILE:O	1:B:647:TYR:HB3	2.12	0.50
1:A:551:ILE:N	1:A:551:ILE:HD12	2.27	0.50
1:A:505:LEU:HB3	1:A:516:PHE:HB2	1.94	0.49
1:A:658:ASN:ND2	1:A:658:ASN:H	1.99	0.48
1:A:635:PHE:O	1:A:639:VAL:HG23	2.14	0.48
1:A:555:ASP:OD1	1:A:558:ARG:NH1	2.47	0.48
2:A:727:FP3:C13	2:A:727:FP3:H3	2.44	0.47
1:B:668:MET:HB3	1:B:674:LEU:HB2	1.96	0.47
1:A:551:ILE:HG13	1:A:721:LEU:HD21	1.96	0.47
1:B:504:VAL:HG13	1:B:572:ILE:HD13	1.95	0.47
2:A:727:FP3:C13	2:A:727:FP3:C3	2.93	0.47
1:A:644:ILE:O	1:A:648:GLU:HG3	2.15	0.46
1:B:650:MET:HG3	1:B:693:MET:CE	2.42	0.46
1:B:593:GLY:HA2	1:B:595:PHE:CE1	2.50	0.45

Continued on next page...

Continued from previous page...

Atom-1	Atom-2	Interatomic distance (Å)	Clash overlap (Å)
1:B:622:PRO:O	1:B:625:ILE:HG22	2.16	0.45
1:B:691:ARG:O	1:B:695:GLU:HG2	2.16	0.45
1:A:582:ILE:HG23	1:A:590:VAL:HG13	1.98	0.44
1:A:623:GLU:H	1:A:623:GLU:HG3	1.48	0.44
1:A:684:ASN:ND2	1:A:684:ASN:H	2.17	0.43
1:B:663:ASP:HA	1:B:666:ILE:HG23	2.00	0.42
1:B:491:THR:HG22	1:B:493:GLN:H	1.84	0.42
1:B:573:ILE:O	1:B:597:LEU:HB2	2.20	0.42
1:A:451:GLU:HG3	1:A:519:TYR:CE1	2.55	0.42
1:A:698:LYS:HD3	1:A:698:LYS:HA	1.84	0.42
1:B:487:VAL:C	1:B:488:THR:HG1	2.21	0.42
1:B:622:PRO:HB2	1:B:626:ARG:NH2	2.35	0.42
1:B:696:CYS:O	1:B:704:ARG:HD3	2.20	0.41
1:B:487:VAL:CG1	1:B:487:VAL:O	2.68	0.41
1:B:575:ARG:HG2	1:B:633:TYR:CD2	2.56	0.41
1:B:501:GLU:HG3	1:B:595:PHE:HB2	2.01	0.41
1:A:551:ILE:CD1	1:A:551:ILE:H	2.34	0.41
1:A:668:MET:HB3	1:A:674:LEU:HB2	2.01	0.41
1:B:566:TYR:CZ	1:B:570:LYS:HD2	2.56	0.41
1:A:504:VAL:O	1:A:507:LYS:HB2	2.20	0.41
1:A:516:PHE:O	1:B:509:ARG:HD3	2.21	0.40
1:B:486:ASN:HB2	1:B:524:GLN:OE1	2.21	0.40
1:A:491:THR:HG22	1:A:493:GLN:H	1.86	0.40
1:B:623:GLU:HG2	1:B:624:VAL:N	2.36	0.40
1:A:512:ASN:HA	1:A:590:VAL:O	2.22	0.40

There are no symmetry-related clashes.

5.3 Torsion angles

5.3.1 Protein backbone

In the following table, the Percentiles column shows the percent Ramachandran outliers of the chain as a percentile score with respect to all X-ray entries followed by that with respect to entries of similar resolution.

The Analysed column shows the number of residues for which the backbone conformation was analysed, and the total number of residues.

Mol	Chain	Analysed	Favoured	Allowed	Outliers	Percentiles
1	A	258/307 (84%)	232 (90%)	19 (7%)	7 (3%)	6 25

Continued on next page...

Continued from previous page...

Mol	Chain	Analysed	Favoured	Allowed	Outliers	Percentiles	
1	B	258/307 (84%)	232 (90%)	21 (8%)	5 (2%)	10	35
All	All	516/614 (84%)	464 (90%)	40 (8%)	12 (2%)	8	30

All (12) Ramachandran outliers are listed below:

Mol	Chain	Res	Type
1	A	627	MET
1	A	629	ASP
1	B	523	PRO
1	A	487	VAL
1	A	617	ILE
1	A	618	LEU
1	B	594	ASP
1	A	467	SER
1	B	488	THR
1	B	522	LYS
1	B	535	SER
1	A	523	PRO

5.3.2 Protein sidechains ⓘ

In the following table, the Percentiles column shows the percent sidechain outliers of the chain as a percentile score with respect to all X-ray entries followed by that with respect to entries of similar resolution.

The Analysed column shows the number of residues for which the sidechain conformation was analysed, and the total number of residues.

Mol	Chain	Analysed	Rotameric	Outliers	Percentiles	
1	A	230/271 (85%)	205 (89%)	25 (11%)	8	23
1	B	230/271 (85%)	204 (89%)	26 (11%)	7	22
All	All	460/542 (85%)	409 (89%)	51 (11%)	8	22

All (51) residues with a non-rotameric sidechain are listed below:

Mol	Chain	Res	Type
1	A	448	ASP
1	A	468	PHE
1	A	475	LYS
1	A	488	THR

Continued on next page...

Continued from previous page...

Mol	Chain	Res	Type
1	A	493	GLN
1	A	495	LEU
1	A	500	ASN
1	A	506	ARG
1	A	511	VAL
1	A	522	LYS
1	A	541	LEU
1	A	577	LEU
1	A	584	LEU
1	A	600	VAL
1	A	623	GLU
1	A	626	ARG
1	A	627	MET
1	A	628	GLN
1	A	634	SER
1	A	656	TYR
1	A	658	ASN
1	A	666	ILE
1	A	674	LEU
1	A	680	LYS
1	A	684	ASN
1	B	448	ASP
1	B	461	GLN
1	B	470	THR
1	B	500	ASN
1	B	511	VAL
1	B	522	LYS
1	B	524	GLN
1	B	525	LEU
1	B	541	LEU
1	B	551	ILE
1	B	575	ARG
1	B	577	LEU
1	B	588	LEU
1	B	589	THR
1	B	600	VAL
1	B	628	GLN
1	B	629	ASP
1	B	645	VAL
1	B	657	SER
1	B	658	ASN
1	B	666	ILE

Continued on next page...

Continued from previous page...

Mol	Chain	Res	Type
1	B	674	LEU
1	B	678	LEU
1	B	699	LYS
1	B	703	GLU
1	B	721	LEU

Some sidechains can be flipped to improve hydrogen bonding and reduce clashes. All (7) such sidechains are listed below:

Mol	Chain	Res	Type
1	A	628	GLN
1	A	658	ASN
1	A	684	ASN
1	B	580	ASN
1	B	585	HIS
1	B	628	GLN
1	B	658	ASN

5.3.3 RNA [i](#)

There are no RNA molecules in this entry.

5.4 Non-standard residues in protein, DNA, RNA chains [i](#)

There are no non-standard protein/DNA/RNA residues in this entry.

5.5 Carbohydrates [i](#)

There are no carbohydrates in this entry.

5.6 Ligand geometry [i](#)

2 ligands are modelled in this entry.

In the following table, the Counts columns list the number of bonds (or angles) for which Mogul statistics could be retrieved, the number of bonds (or angles) that are observed in the model and the number of bonds (or angles) that are defined in the chemical component dictionary. The Link column lists molecule types, if any, to which the group is linked. The Z score for a bond length (or angle) is the number of standard deviations the observed value is removed from the expected value. A bond length (or angle) with $|Z| > 2$ is considered an outlier worth inspection. RMSZ is the root-mean-square of all Z scores of the bond lengths (or angles).

Mol	Type	Chain	Res	Link	Bond lengths			Bond angles		
					Counts	RMSZ	# Z > 2	Counts	RMSZ	# Z > 2
2	FP3	A	727	-	23,27,27	1.62	4 (17%)	26,38,38	1.85	7 (26%)
2	FP3	B	727	-	23,27,27	1.60	3 (13%)	26,38,38	2.25	8 (30%)

In the following table, the Chirals column lists the number of chiral outliers, the number of chiral centers analysed, the number of these observed in the model and the number defined in the chemical component dictionary. Similar counts are reported in the Torsion and Rings columns. '-' means no outliers of that kind were identified.

Mol	Type	Chain	Res	Link	Chirals	Torsions	Rings
2	FP3	A	727	-	-	0/4/8/8	0/3/4/4
2	FP3	B	727	-	-	0/4/8/8	0/3/4/4

All (7) bond length outliers are listed below:

Mol	Chain	Res	Type	Atoms	Z	Observed(Å)	Ideal(Å)
2	B	727	FP3	C15-C17	-2.82	1.43	1.49
2	A	727	FP3	C15-C17	-2.80	1.44	1.49
2	A	727	FP3	C4-N7	-2.74	1.34	1.40
2	A	727	FP3	C6-C1	2.10	1.41	1.39
2	B	727	FP3	C5-C6	2.22	1.42	1.38
2	A	727	FP3	C13-C8	4.26	1.41	1.36
2	B	727	FP3	C13-C8	4.43	1.42	1.36

All (15) bond angle outliers are listed below:

Mol	Chain	Res	Type	Atoms	Z	Observed(°)	Ideal(°)
2	A	727	FP3	C13-C12-C16	-5.18	132.43	135.48
2	B	727	FP3	C13-C12-C11	-4.80	117.63	120.33
2	B	727	FP3	C13-C12-C16	-4.27	132.97	135.48
2	A	727	FP3	C8-C13-C12	-3.06	116.90	119.80
2	B	727	FP3	C20-C19-N18	-2.81	118.75	123.44
2	B	727	FP3	C8-C13-C12	-2.27	117.64	119.80
2	A	727	FP3	C13-C12-C11	-2.18	119.10	120.33
2	A	727	FP3	C20-C19-N18	-2.06	120.00	123.44
2	A	727	FP3	C16-C12-C11	2.12	108.47	105.94
2	B	727	FP3	C2-C3-C4	2.35	122.93	120.28
2	B	727	FP3	C16-C12-C11	2.90	109.41	105.94
2	A	727	FP3	C19-N18-C17	3.02	118.82	115.93
2	B	727	FP3	C19-N18-C17	3.96	119.72	115.93
2	A	727	FP3	C5-C6-C1	4.43	120.70	118.27
2	B	727	FP3	C5-C6-C1	5.67	121.38	118.27

There are no chirality outliers.

There are no torsion outliers.

There are no ring outliers.

2 monomers are involved in 7 short contacts:

Mol	Chain	Res	Type	Clashes	Symm-Clashes
2	A	727	FP3	3	0
2	B	727	FP3	4	0

5.7 Other polymers [i](#)

There are no such residues in this entry.

5.8 Polymer linkage issues [i](#)

There are no chain breaks in this entry.

6 Fit of model and data ⓘ

6.1 Protein, DNA and RNA chains ⓘ

In the following table, the column labelled ‘#RSRZ> 2’ contains the number (and percentage) of RSRZ outliers, followed by percent RSRZ outliers for the chain as percentile scores relative to all X-ray entries and entries of similar resolution. The OWAB column contains the minimum, median, 95th percentile and maximum values of the occupancy-weighted average B-factor per residue. The column labelled ‘Q< 0.9’ lists the number of (and percentage) of residues with an average occupancy less than 0.9.

Mol	Chain	Analysed	<RSRZ>	#RSRZ>2	OWAB(Å ²)	Q<0.9
1	A	262/307 (85%)	0.08	9 (3%) 49 41	43, 58, 89, 99	0
1	B	262/307 (85%)	0.10	8 (3%) 52 45	41, 62, 88, 101	0
All	All	524/614 (85%)	0.09	17 (3%) 51 43	41, 60, 89, 101	0

All (17) RSRZ outliers are listed below:

Mol	Chain	Res	Type	RSRZ
1	A	722	PRO	6.1
1	B	630	LYS	5.8
1	B	723	LYS	4.3
1	A	448	ASP	3.4
1	A	628	GLN	3.4
1	B	722	PRO	3.1
1	A	723	LYS	3.1
1	B	448	ASP	3.0
1	A	630	LYS	2.9
1	B	721	LEU	2.9
1	B	631	ASN	2.9
1	B	593	GLY	2.5
1	A	593	GLY	2.4
1	A	721	LEU	2.3
1	B	587	ASP	2.2
1	A	600	VAL	2.2
1	A	488	THR	2.1

6.2 Non-standard residues in protein, DNA, RNA chains ⓘ

There are no non-standard protein/DNA/RNA residues in this entry.

6.3 Carbohydrates [i](#)

There are no carbohydrates in this entry.

6.4 Ligands [i](#)

In the following table, the Atoms column lists the number of modelled atoms in the group and the number defined in the chemical component dictionary. LLDF column lists the quality of electron density of the group with respect to its neighbouring residues in protein, DNA or RNA chains. The B-factors column lists the minimum, median, 95th percentile and maximum values of B factors of atoms in the group. The column labelled 'Q< 0.9' lists the number of atoms with occupancy less than 0.9.

Mol	Type	Chain	Res	Atoms	RSCC	RSR	LLDF	B-factors(\AA^2)	Q<0.9
2	FP3	B	727	24/24	0.87	0.24	0.61	72,74,77,78	0
2	FP3	A	727	24/24	0.93	0.21	0.24	62,63,65,65	0

6.5 Other polymers [i](#)

There are no such residues in this entry.