



Full wwPDB X-ray Structure Validation Report ⓘ

Feb 1, 2016 – 11:45 AM GMT

PDB ID : 3PWG
Title : Crystal structure of the mutant S29G.P34A of D-Glucarate dehydratase from Escherichia coli complexed with product 5-keto-4-deoxy-D-Glucarate
Authors : Fedorov, A.A.; Fedorov, E.V.; Lukk, T.; Gerlt, J.A.; Almo, S.C.
Deposited on : 2010-12-08
Resolution : 2.00 Å(reported)

This is a Full wwPDB X-ray Structure Validation Report for a publicly released PDB entry.
We welcome your comments at validation@mail.wwpdb.org
A user guide is available at
<http://wwpdb.org/validation/2016/XrayValidationReportHelp>
with specific help available everywhere you see the ⓘ symbol.

The following versions of software and data (see [references ⓘ](#)) were used in the production of this report:

MolProbity : 4.02b-467
Mogul : 1.7 (RC4), CSD as536be (2015)
Xtriage (Phenix) : 1.9-1692
EDS : rb-20026688
Percentile statistics : 20151230.v01 (using entries in the PDB archive December 30th 2015)
Refmac : 5.8.0135
CCP4 : 6.5.0
Ideal geometry (proteins) : Engh & Huber (2001)
Ideal geometry (DNA, RNA) : Parkinson et al. (1996)
Validation Pipeline (wwPDB-VP) : trunk26865

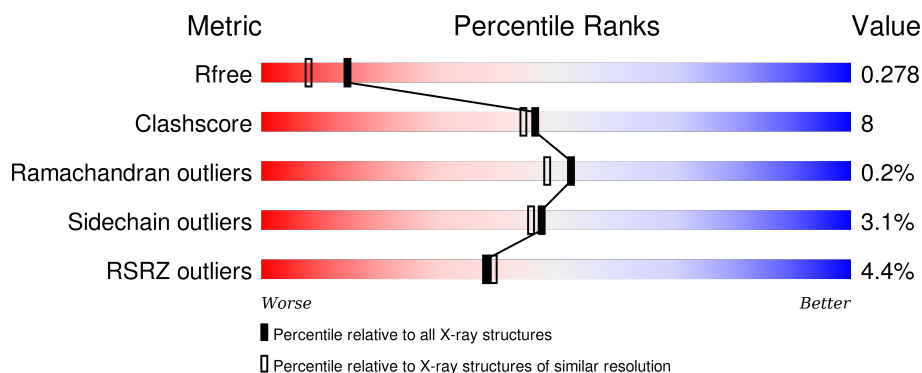
1 Overall quality at a glance

The following experimental techniques were used to determine the structure:

X-RAY DIFFRACTION

The reported resolution of this entry is 2.00 Å.

Percentile scores (ranging between 0-100) for global validation metrics of the entry are shown in the following graphic. The table shows the number of entries on which the scores are based.



Metric	Whole archive (#Entries)	Similar resolution (#Entries, resolution range(Å))
R_{free}	91344	6249 (2.00-2.00)
Clashscore	102246	7340 (2.00-2.00)
Ramachandran outliers	100387	7248 (2.00-2.00)
Sidechain outliers	100360	7247 (2.00-2.00)
RSRZ outliers	91569	6262 (2.00-2.00)

The table below summarises the geometric issues observed across the polymeric chains and their fit to the electron density. The red, orange, yellow and green segments on the lower bar indicate the fraction of residues that contain outliers for ≥ 3 , 2, 1 and 0 types of geometric quality criteria. A grey segment represents the fraction of residues that are not modelled. The numeric value for each fraction is indicated below the corresponding segment, with a dot representing fractions $\leq 5\%$. The upper red bar (where present) indicates the fraction of residues that have poor fit to the electron density. The numeric value is given above the bar.

Mol	Chain	Length	Quality of chain
1	A	446	<div> <div>3%</div> <div>84%</div> <div>14%</div> <div>..</div> </div>
1	B	446	<div> <div>3%</div> <div>87%</div> <div>12%</div> <div>.</div> </div>
1	C	446	<div> <div>6%</div> <div>76%</div> <div>20%</div> <div>..</div> </div>
1	D	446	<div> <div>5%</div> <div>70%</div> <div>24%</div> <div>..</div> </div>

The following table lists non-polymeric compounds, carbohydrate monomers and non-standard

residues in protein, DNA, RNA chains that are outliers for geometric or electron-density-fit criteria:

Mol	Type	Chain	Res	Chirality	Geometry	Clashes	Electron density
3	GLR	D	448	-	-	-	X
4	GOL	B	449	-	-	-	X

2 Entry composition

There are 5 unique types of molecules in this entry. The entry contains 13747 atoms, of which 0 are hydrogens and 0 are deuteriums.

In the tables below, the ZeroOcc column contains the number of atoms modelled with zero occupancy, the AltConf column contains the number of residues with at least one atom in alternate conformation and the Trace column contains the number of residues modelled with at most 2 atoms.

- Molecule 1 is a protein called Glucarate dehydratase.

Mol	Chain	Residues	Atoms					ZeroOcc	AltConf	Trace
1	A	442	Total	C	N	O	S	0	0	0
			3421	2162	600	638	21			
1	B	442	Total	C	N	O	S	0	0	0
			3421	2162	600	638	21			
1	C	433	Total	C	N	O	S	0	0	0
			3359	2124	588	626	21			
1	D	427	Total	C	N	O	S	0	0	0
			3304	2093	575	615	21			

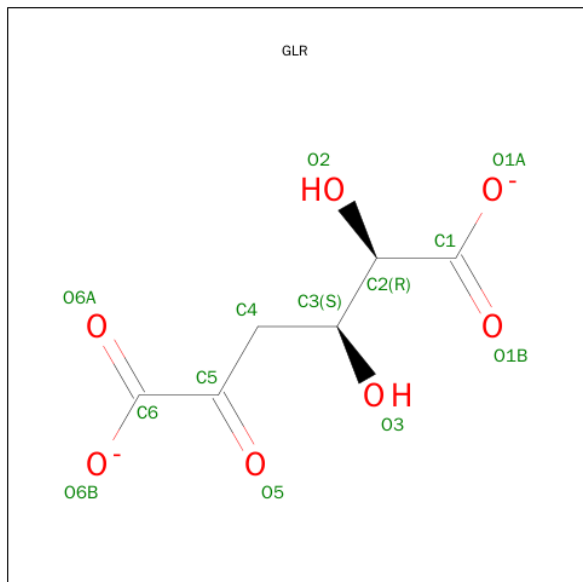
There are 8 discrepancies between the modelled and reference sequences:

Chain	Residue	Modelled	Actual	Comment	Reference
A	29	GLY	SER	ENGINEERED MUTATION	UNP E2KTD9
A	34	ALA	PRO	ENGINEERED MUTATION	UNP E2KTD9
B	29	GLY	SER	ENGINEERED MUTATION	UNP E2KTD9
B	34	ALA	PRO	ENGINEERED MUTATION	UNP E2KTD9
C	29	GLY	SER	ENGINEERED MUTATION	UNP E2KTD9
C	34	ALA	PRO	ENGINEERED MUTATION	UNP E2KTD9
D	29	GLY	SER	ENGINEERED MUTATION	UNP E2KTD9
D	34	ALA	PRO	ENGINEERED MUTATION	UNP E2KTD9

- Molecule 2 is MAGNESIUM ION (three-letter code: MG) (formula: Mg).

Mol	Chain	Residues	Atoms		ZeroOcc	AltConf
2	B	1	Total	Mg	0	0
			1	1		
2	A	1	Total	Mg	0	0
			1	1		
2	D	1	Total	Mg	0	0
			1	1		
2	C	1	Total	Mg	0	0
			1	1		

- Molecule 3 is 2,3-DIHYDROXY-5-OXO-HEXANEDIOATE (three-letter code: GLR) (formula: $C_6H_6O_7$).



Mol	Chain	Residues	Atoms			ZeroOcc	AltConf
3	A	1	Total	C	O	0	0
			13	6	7		
3	B	1	Total	C	O	0	0
			13	6	7		
3	C	1	Total	C	O	0	0
			13	6	7		
3	D	1	Total	C	O	0	0
			13	6	7		

- Molecule 4 is GLYCEROL (three-letter code: GOL) (formula: $C_3H_8O_3$).



Mol	Chain	Residues	Atoms			ZeroOcc	AltConf
4	A	1	Total	C	O	0	0
			6	3	3		
4	B	1	Total	C	O	0	0
			6	3	3		
4	D	1	Total	C	O	0	0
			6	3	3		

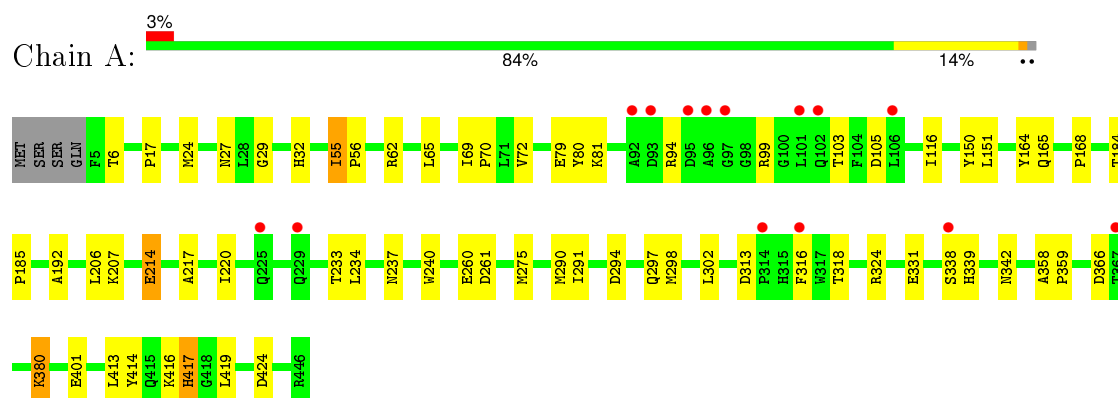
- Molecule 5 is water.

Mol	Chain	Residues	Atoms		ZeroOcc	AltConf
5	A	56	Total	O	0	0
			56	56		
5	B	67	Total	O	0	0
			67	67		
5	C	28	Total	O	0	0
			28	28		
5	D	17	Total	O	0	0
			17	17		

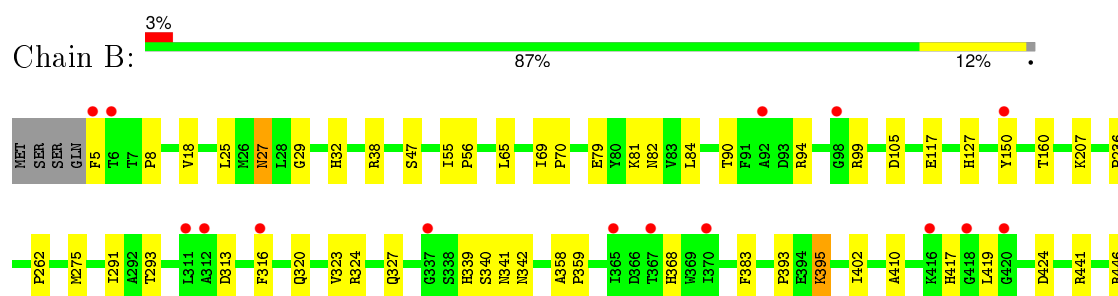
3 Residue-property plots

These plots are drawn for all protein, RNA and DNA chains in the entry. The first graphic for a chain summarises the proportions of errors displayed in the second graphic. The second graphic shows the sequence view annotated by issues in geometry and electron density. Residues are color-coded according to the number of geometric quality criteria for which they contain at least one outlier: green = 0, yellow = 1, orange = 2 and red = 3 or more. A red dot above a residue indicates a poor fit to the electron density ($RSRZ > 2$). Stretches of 2 or more consecutive residues without any outlier are shown as a green connector. Residues present in the sample, but not in the model, are shown in grey.

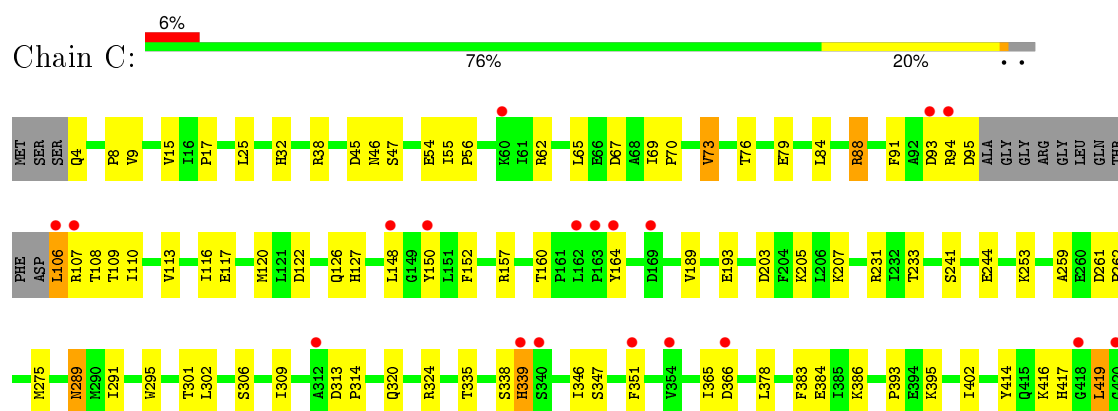
• Molecule 1: Glucarate dehydratase

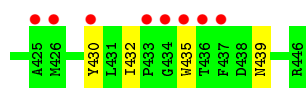


• Molecule 1: Glucarate dehydratase

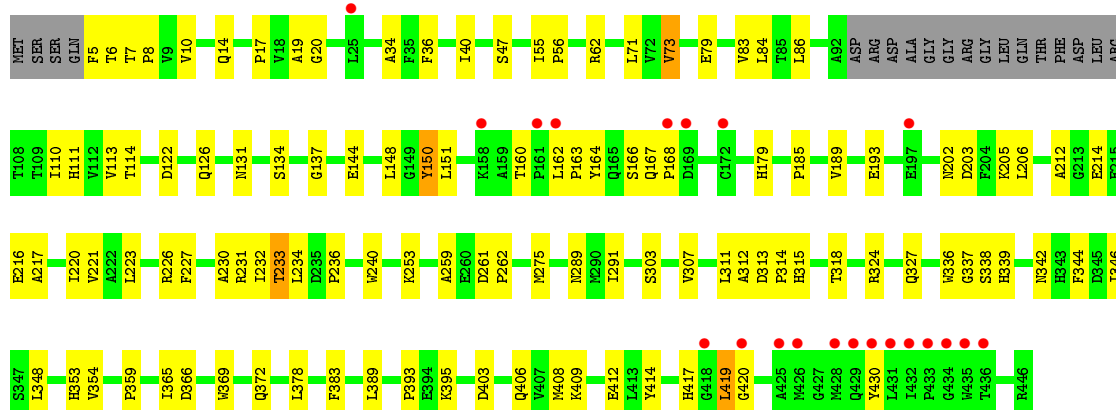


• Molecule 1: Glucarate dehydratase





● Molecule 1: Glucarate dehydratase



4 Data and refinement statistics

Property	Value	Source
Space group	P 21 21 21	Depositor
Cell constants a, b, c, α , β , γ	99.12Å 130.66Å 158.01Å 90.00° 90.00° 90.00°	Depositor
Resolution (Å)	39.87 – 2.00 39.87 – 2.00	Depositor EDS
% Data completeness (in resolution range)	92.7 (39.87-2.00) 92.8 (39.87-2.00)	Depositor EDS
R_{merge}	(Not available)	Depositor
R_{sym}	(Not available)	Depositor
$\langle I/\sigma(I) \rangle$ ¹	0.99 (at 2.00Å)	Xtriage
Refinement program	PHENIX (phenix.refine: 1.5_2)	Depositor
R, R_{free}	0.231 , 0.280 0.231 , 0.278	Depositor DCC
R_{free} test set	6467 reflections (5.29%)	DCC
Wilson B-factor (Å ²)	42.4	Xtriage
Anisotropy	0.486	Xtriage
Bulk solvent k_{sol} (e/Å ³), B_{sol} (Å ²)	0.33 , 35.1	EDS
Estimated twinning fraction	No twinning to report.	Xtriage
L-test for twinning ²	$\langle L \rangle = 0.49$, $\langle L^2 \rangle = 0.32$	Xtriage
Outliers	4 of 128711 reflections (0.003%)	Xtriage
F_o, F_c correlation	0.96	EDS
Total number of atoms	13747	wwPDB-VP
Average B, all atoms (Å ²)	50.0	wwPDB-VP

Xtriage's analysis on translational NCS is as follows: *The largest off-origin peak in the Patterson function is 7.39% of the height of the origin peak. No significant pseudotranslation is detected.*

¹Intensities estimated from amplitudes.

²Theoretical values of $\langle |L| \rangle$, $\langle L^2 \rangle$ for acentric reflections are 0.5, 0.375 respectively for untwinned datasets, and 0.333, 0.2 for perfectly twinned datasets.

5 Model quality [i](#)

5.1 Standard geometry [i](#)

Bond lengths and bond angles in the following residue types are not validated in this section: GOL, GLR, MG

The Z score for a bond length (or angle) is the number of standard deviations the observed value is removed from the expected value. A bond length (or angle) with $|Z| > 5$ is considered an outlier worth inspection. RMSZ is the root-mean-square of all Z scores of the bond lengths (or angles).

Mol	Chain	Bond lengths		Bond angles	
		RMSZ	# Z >5	RMSZ	# Z >5
1	A	0.44	0/3499	0.57	0/4740
1	B	0.43	0/3499	0.57	0/4740
1	C	0.38	0/3435	0.54	0/4653
1	D	0.36	0/3380	0.51	0/4580
All	All	0.40	0/13813	0.55	0/18713

There are no bond length outliers.

There are no bond angle outliers.

There are no chirality outliers.

There are no planarity outliers.

5.2 Too-close contacts [i](#)

In the following table, the Non-H and H(model) columns list the number of non-hydrogen atoms and hydrogen atoms in the chain respectively. The H(added) column lists the number of hydrogen atoms added and optimized by MolProbity. The Clashes column lists the number of clashes within the asymmetric unit, whereas Symm-Clashes lists symmetry related clashes.

Mol	Chain	Non-H	H(model)	H(added)	Clashes	Symm-Clashes
1	A	3421	0	3357	39	0
1	B	3421	0	3357	40	0
1	C	3359	0	3298	53	0
1	D	3304	0	3245	83	0
2	A	1	0	0	0	0
2	B	1	0	0	0	0
2	C	1	0	0	0	0
2	D	1	0	0	0	0
3	A	13	0	6	2	0

Continued on next page...

Continued from previous page...

Mol	Chain	Non-H	H(model)	H(added)	Clashes	Symm-Clashes
3	B	13	0	6	0	0
3	C	13	0	6	0	0
3	D	13	0	6	0	0
4	A	6	0	8	1	0
4	B	6	0	8	0	0
4	D	6	0	8	2	0
5	A	56	0	0	1	0
5	B	67	0	0	1	0
5	C	28	0	0	2	0
5	D	17	0	0	2	0
All	All	13747	0	13305	203	0

The all-atom clashscore is defined as the number of clashes found per 1000 atoms (including hydrogen atoms). The all-atom clashscore for this structure is 8.

All (203) close contacts within the same asymmetric unit are listed below, sorted by their clash magnitude.

Atom-1	Atom-2	Interatomic distance (Å)	Clash overlap (Å)
1:D:220:ILE:HD11	1:D:234:LEU:HD13	1.56	0.85
1:D:289:ASN:HD22	1:D:339:HIS:CD2	2.01	0.79
1:B:5:PHE:CD1	1:D:47:SER:HB3	2.18	0.78
1:C:205:LYS:HD2	5:C:464:HOH:O	1.84	0.77
1:C:205:LYS:HG3	1:C:233:THR:HG23	1.66	0.77
1:B:55:ILE:HD11	1:B:65:LEU:HD11	1.66	0.77
1:D:303:SER:OG	4:D:449:GOL:H32	1.85	0.76
1:C:9:VAL:HG22	1:C:76:THR:HG22	1.68	0.75
1:A:55:ILE:HD11	1:A:65:LEU:HD11	1.69	0.73
1:C:55:ILE:HD11	1:C:65:LEU:HD11	1.74	0.70
1:B:313:ASP:HB3	1:B:316:PHE:CE1	2.27	0.69
1:D:403:ASP:OD2	1:D:406:GLN:HG2	1.94	0.67
1:C:414:TYR:HA	1:C:419:LEU:HD12	1.77	0.67
1:D:344:PHE:CD2	1:D:378:LEU:HG	2.29	0.67
1:C:160:THR:HG22	1:C:430:TYR:HB2	1.74	0.67
1:C:259:ALA:HB1	1:C:262:PRO:HG3	1.79	0.65
1:A:103:THR:HG22	1:A:237:ASN:CG	2.18	0.63
1:D:417:HIS:HB2	1:D:419:LEU:HD11	1.81	0.62
1:C:241:SER:OG	1:C:244:GLU:HG3	1.99	0.62
1:B:275:MET:HG3	1:B:291:ILE:HD13	1.82	0.62
1:C:189:VAL:O	1:C:193:GLU:HG3	2.01	0.61
1:C:67:ASP:O	1:C:70:PRO:HD2	2.02	0.60
1:C:289:ASN:HD22	1:C:289:ASN:C	2.05	0.60

Continued on next page...

Continued from previous page...

Atom-1	Atom-2	Interatomic distance (Å)	Clash overlap (Å)
1:D:259:ALA:HB1	1:D:262:PRO:HG3	1.84	0.60
1:D:339:HIS:HA	1:D:366:ASP:HB2	1.83	0.59
1:B:5:PHE:CE1	1:D:47:SER:HB3	2.37	0.59
1:D:160:THR:HG22	1:D:430:TYR:HB2	1.85	0.59
1:C:94:ARG:HB3	1:C:108:THR:HB	1.85	0.59
1:D:148:LEU:HD11	1:D:366:ASP:HA	1.85	0.58
1:C:203:ASP:OD1	1:C:231:ARG:HB2	2.03	0.58
1:A:416:LYS:HE2	1:A:417:HIS:CE1	2.38	0.58
1:C:95:ASP:OD2	1:C:107:ARG:HG2	2.02	0.58
1:D:383:PHE:CZ	1:D:393:PRO:HG2	2.39	0.58
1:C:338:SER:HB3	1:C:365:ILE:HG23	1.86	0.58
1:B:99:ARG:HG3	1:B:105:ASP:OD2	2.04	0.57
1:D:203:ASP:OD1	1:D:231:ARG:HB2	2.04	0.57
1:D:144:GLU:CD	1:D:389:LEU:HD13	2.25	0.57
1:C:95:ASP:CG	1:C:107:ARG:HG2	2.24	0.56
1:A:94:ARG:HH11	1:A:94:ARG:HG3	1.70	0.56
1:D:122:ASP:O	1:D:126:GLN:HG3	2.05	0.56
1:B:69:ILE:HB	1:B:70:PRO:HD3	1.85	0.56
1:D:338:SER:HB3	1:D:365:ILE:HD12	1.87	0.56
1:D:342:ASN:HD22	1:D:372:GLN:HE22	1.53	0.56
1:A:55:ILE:HB	1:A:56:PRO:CD	2.35	0.56
1:C:275:MET:HG3	1:C:291:ILE:HD13	1.87	0.56
1:D:414:TYR:O	1:D:419:LEU:HD12	2.06	0.56
1:D:314:PRO:HG3	1:D:354:VAL:HG11	1.88	0.56
1:C:416:LYS:HD3	1:C:417:HIS:CE1	2.40	0.55
1:D:303:SER:HG	4:D:449:GOL:H32	1.70	0.55
1:D:275:MET:HG3	1:D:291:ILE:HD13	1.89	0.55
1:A:24:MET:HG3	1:A:164:TYR:CZ	2.42	0.55
1:D:17:PRO:HG3	1:D:62:ARG:CD	2.37	0.54
1:D:131:ASN:HB2	1:D:353:HIS:CE1	2.43	0.54
1:D:185:PRO:O	1:D:189:VAL:HG23	2.08	0.53
1:D:144:GLU:OE1	1:D:389:LEU:HD13	2.07	0.53
1:B:341:ASN:HA	1:B:368:HIS:CE1	2.44	0.53
1:B:5:PHE:HD1	1:D:47:SER:HB3	1.70	0.53
4:A:449:GOL:H12	1:C:302:LEU:O	2.08	0.53
1:D:261:ASP:HB2	5:D:463:HOH:O	2.09	0.52
1:A:80:TYR:OH	1:A:81:LYS:HE3	2.10	0.52
1:D:226:ARG:HG3	1:D:227:PHE:CE1	2.45	0.52
1:D:131:ASN:HB2	1:D:353:HIS:HE1	1.75	0.51
1:C:432:ILE:O	1:C:435:TRP:HB2	2.11	0.51
1:D:10:VAL:HG12	1:D:73:VAL:HA	1.92	0.51

Continued on next page...

Continued from previous page...

Atom-1	Atom-2	Interatomic distance (Å)	Clash overlap (Å)
1:B:84:LEU:HD11	1:B:117:GLU:HG3	1.92	0.51
1:D:223:LEU:HB3	1:D:232:ILE:HD13	1.93	0.51
1:C:417:HIS:HB2	1:C:419:LEU:HG	1.92	0.51
1:D:313:ASP:OD2	1:D:314:PRO:HD2	2.11	0.51
1:B:417:HIS:HB2	1:B:419:LEU:HG	1.91	0.51
1:C:261:ASP:HB2	5:C:474:HOH:O	2.09	0.51
1:D:17:PRO:HB2	1:D:414:TYR:CD1	2.46	0.51
1:D:193:GLU:HG2	1:D:226:ARG:HH21	1.75	0.50
1:C:339:HIS:HA	1:C:366:ASP:HB2	1.93	0.50
1:D:79:GLU:O	1:D:83:VAL:HG23	2.10	0.50
1:D:40:ILE:HD12	1:D:346:ILE:HD12	1.93	0.50
1:A:298:MET:O	1:A:302:LEU:HG	2.12	0.49
1:D:327:GLN:HA	1:D:359:PRO:HG2	1.94	0.49
1:C:313:ASP:HB2	1:C:339:HIS:ND1	2.28	0.49
1:D:223:LEU:HB3	1:D:232:ILE:CD1	2.43	0.49
1:B:5:PHE:HD1	1:D:47:SER:CB	2.26	0.49
1:A:184:THR:HB	1:A:185:PRO:HD2	1.94	0.48
1:B:340:SER:O	1:B:368:HIS:HE1	1.96	0.48
1:A:234:LEU:HD23	1:A:240:TRP:HH2	1.78	0.48
1:D:193:GLU:HG2	1:D:226:ARG:NH2	2.28	0.48
1:B:117:GLU:OE1	1:B:320:GLN:HG3	2.13	0.48
1:D:205:LYS:HA	1:D:233:THR:HG23	1.96	0.48
1:D:217:ALA:O	1:D:221:VAL:HG23	2.13	0.48
1:A:17:PRO:HB2	1:A:414:TYR:CD1	2.48	0.48
1:B:18:VAL:HB	1:B:410:ALA:HB1	1.95	0.48
1:C:313:ASP:OD2	1:C:314:PRO:HD2	2.14	0.48
1:B:47:SER:HB2	1:D:5:PHE:CD1	2.49	0.48
1:D:148:LEU:O	1:D:148:LEU:HD12	2.14	0.47
1:C:384:GLU:HB3	1:C:386:LYS:HE3	1.95	0.47
1:B:383:PHE:CZ	1:B:393:PRO:HG2	2.49	0.47
1:A:29:GLY:O	1:A:424:ASP:HB2	2.14	0.47
1:B:395:LYS:H	1:B:395:LYS:HG2	1.39	0.47
1:D:150:TYR:OH	1:D:205:LYS:HE2	2.14	0.47
1:C:301:THR:HG23	1:C:306:SER:HB2	1.96	0.47
1:C:157:ARG:HB2	1:C:164:TYR:HB2	1.96	0.47
1:B:441:ARG:HG2	1:B:446:ARG:NH1	2.29	0.47
1:D:110:ILE:CD1	1:D:318:THR:HG23	2.45	0.46
1:B:324:ARG:HD3	1:D:324:ARG:HG2	1.97	0.46
1:D:408:MET:O	1:D:412:GLU:HG3	2.15	0.46
1:D:212:ALA:O	1:D:216:GLU:HG3	2.15	0.46
1:D:166:SER:O	1:D:167:GLN:HG3	2.15	0.46

Continued on next page...

Continued from previous page...

Atom-1	Atom-2	Interatomic distance (Å)	Clash overlap (Å)
1:D:34:ALA:HA	1:D:164:TYR:CE2	2.50	0.46
1:A:338:SER:O	1:A:366:ASP:HB2	2.15	0.46
1:A:151:LEU:HD11	1:A:192:ALA:HB2	1.97	0.46
1:B:323:VAL:O	1:B:327:GLN:HG3	2.16	0.46
1:B:207:LYS:HD2	5:B:450:HOH:O	2.16	0.46
1:B:55:ILE:HB	1:B:56:PRO:HD2	1.97	0.46
1:B:29:GLY:O	1:B:424:ASP:HB2	2.16	0.46
1:D:110:ILE:HD11	1:D:318:THR:HG23	1.98	0.46
1:C:148:LEU:HD21	1:C:366:ASP:OD1	2.16	0.45
1:A:55:ILE:HB	1:A:56:PRO:HD2	1.97	0.45
1:A:324:ARG:HG2	1:C:324:ARG:HD3	1.98	0.45
1:C:84:LEU:HD22	1:C:113:VAL:HG13	1.97	0.45
1:C:69:ILE:O	1:C:73:VAL:HG13	2.16	0.45
1:A:275:MET:HG3	1:A:291:ILE:HD13	1.99	0.45
1:D:84:LEU:HD22	1:D:113:VAL:HG13	1.97	0.45
1:D:55:ILE:HB	1:D:56:PRO:HD2	1.99	0.45
1:D:20:GLY:HA3	1:D:36:PHE:CE1	2.52	0.45
1:A:17:PRO:HG3	1:A:62:ARG:CD	2.47	0.45
1:C:17:PRO:HG3	1:C:62:ARG:HD3	1.98	0.45
1:C:116:ILE:O	1:C:120:MET:HG2	2.17	0.45
1:B:5:PHE:CD1	1:D:47:SER:CB	2.94	0.44
1:B:5:PHE:CD2	1:D:6:THR:HB	2.53	0.44
1:B:236:PRO:HG2	1:B:262:PRO:HA	2.00	0.44
1:D:311:LEU:HD23	1:D:337:GLY:HA3	2.00	0.44
1:D:111:HIS:HD2	1:D:315:HIS:O	2.01	0.44
1:C:55:ILE:HB	1:C:56:PRO:HD2	2.00	0.44
1:D:259:ALA:CB	1:D:262:PRO:HG3	2.48	0.44
1:A:313:ASP:HB3	1:A:316:PHE:CE2	2.52	0.44
1:C:38:ARG:NE	1:C:54:GLU:OE2	2.46	0.43
1:A:99:ARG:NH2	1:A:290:MET:HG2	2.33	0.43
1:D:202:ASN:O	1:D:230:ALA:HA	2.18	0.43
1:D:162:LEU:HA	1:D:163:PRO:HD3	1.69	0.43
1:A:331:GLU:HB3	1:C:295:TRP:HB3	2.00	0.43
1:A:214:GLU:O	1:A:217:ALA:HB3	2.17	0.43
1:B:8:PRO:HD3	1:B:127:HIS:CE1	2.53	0.43
1:C:88:ARG:NH2	1:C:110:ILE:HD11	2.34	0.43
1:C:122:ASP:O	1:C:126:GLN:HG3	2.18	0.43
1:A:207:LYS:HE3	3:A:448:GLR:H21	2.01	0.43
1:A:207:LYS:HD2	5:A:462:HOH:O	2.17	0.43
1:B:340:SER:O	1:B:368:HIS:CE1	2.70	0.43
1:A:99:ARG:HG3	1:A:105:ASP:HA	2.01	0.43

Continued on next page...

Continued from previous page...

Atom-1	Atom-2	Interatomic distance (Å)	Clash overlap (Å)
1:A:72:VAL:HG21	1:A:116:ILE:HD13	2.00	0.43
1:A:220:ILE:HD11	1:A:234:LEU:HB2	2.01	0.43
1:C:45:ASP:C	1:C:47:SER:H	2.21	0.43
1:A:69:ILE:N	1:A:70:PRO:CD	2.81	0.42
1:D:289:ASN:ND2	1:D:339:HIS:CD2	2.81	0.42
1:B:341:ASN:O	1:B:342:ASN:C	2.57	0.42
1:C:378:LEU:O	1:C:402:ILE:HD12	2.19	0.42
1:D:151:LEU:O	1:D:206:LEU:HD12	2.19	0.42
1:C:346:ILE:HD11	1:C:402:ILE:HD13	2.00	0.42
1:B:90:THR:HG22	1:B:90:THR:O	2.20	0.42
1:B:82:ASN:HD21	1:D:134:SER:HB3	1.84	0.42
1:A:99:ARG:HG3	1:A:105:ASP:CG	2.40	0.42
1:C:25:LEU:HB2	1:C:32:HIS:CG	2.55	0.42
1:D:7:THR:HA	1:D:8:PRO:HD3	1.86	0.42
1:C:69:ILE:HB	1:C:70:PRO:HD3	2.00	0.42
1:C:402:ILE:HA	1:C:402:ILE:HD12	1.86	0.42
1:B:358:ALA:HA	1:B:359:PRO:HD3	1.86	0.42
1:D:372:GLN:NE2	5:D:466:HOH:O	2.35	0.42
1:B:38:ARG:HD3	1:B:342:ASN:O	2.20	0.42
1:D:312:ALA:HB3	1:D:336:TRP:HE1	1.85	0.42
1:A:358:ALA:HA	1:A:359:PRO:HD3	1.85	0.42
1:A:32:HIS:CE1	1:A:342:ASN:OD1	2.72	0.42
1:D:148:LEU:C	1:D:148:LEU:HD12	2.40	0.42
1:B:25:LEU:HB2	1:B:32:HIS:CG	2.55	0.42
1:C:106:LEU:HD23	1:C:106:LEU:N	2.35	0.42
1:D:289:ASN:HB2	1:D:339:HIS:CE1	2.55	0.41
1:D:71:LEU:HD22	1:D:86:LEU:HD21	2.01	0.41
1:B:99:ARG:HD2	1:B:293:THR:HG21	2.03	0.41
1:D:167:GLN:OE1	1:D:179:HIS:NE2	2.47	0.41
1:D:409:LYS:HE3	1:D:409:LYS:HB2	1.71	0.41
1:B:27:ASN:HD22	1:B:27:ASN:N	2.18	0.41
1:C:309:ILE:HA	1:C:335:THR:O	2.20	0.41
1:D:348:LEU:HD22	1:D:369:TRP:CD1	2.56	0.41
1:A:294:ASP:OD1	1:A:297:GLN:HG3	2.21	0.41
1:C:205:LYS:CG	1:C:233:THR:HG23	2.44	0.41
1:A:416:LYS:HE2	1:A:417:HIS:HE1	1.85	0.41
1:C:8:PRO:HD3	1:C:127:HIS:CE1	2.56	0.41
1:D:253:LYS:O	1:D:253:LYS:HD3	2.21	0.41
1:A:413:LEU:HD12	1:A:417:HIS:NE2	2.35	0.41
1:D:19:ALA:HA	1:D:36:PHE:O	2.21	0.41
1:D:311:LEU:CD2	1:D:337:GLY:HA3	2.50	0.41

Continued on next page...

Continued from previous page...

Atom-1	Atom-2	Interatomic distance (Å)	Clash overlap (Å)
1:C:91:PHE:O	1:C:109:THR:OG1	2.31	0.41
1:A:206:LEU:HD23	1:A:234:LEU:HD13	2.03	0.41
1:C:152:PHE:CE1	1:C:207:LYS:HG2	2.55	0.41
1:B:99:ARG:HG3	1:B:105:ASP:CG	2.42	0.40
1:D:342:ASN:HD22	1:D:372:GLN:NE2	2.15	0.40
1:D:236:PRO:HG3	1:D:240:TRP:CZ2	2.56	0.40
1:A:380:LYS:HG3	1:A:401:GLU:HB2	2.03	0.40
1:C:117:GLU:OE1	1:C:320:GLN:HG3	2.20	0.40
1:C:383:PHE:CZ	1:C:393:PRO:HG2	2.57	0.40
1:B:81:LYS:HD3	1:D:137:GLY:O	2.21	0.40
1:A:207:LYS:HE3	3:A:448:GLR:C2	2.52	0.40
1:A:165:GLN:HA	1:A:165:GLN:NE2	2.36	0.40
1:B:55:ILE:HB	1:B:56:PRO:CD	2.51	0.40
1:D:114:THR:OG1	1:D:318:THR:HA	2.22	0.40
1:D:167:GLN:N	1:D:168:PRO:HD3	2.37	0.40
1:A:260:GLU:O	1:A:261:ASP:C	2.58	0.40

There are no symmetry-related clashes.

5.3 Torsion angles [i](#)

5.3.1 Protein backbone [i](#)

In the following table, the Percentiles column shows the percent Ramachandran outliers of the chain as a percentile score with respect to all X-ray entries followed by that with respect to entries of similar resolution.

The Analysed column shows the number of residues for which the backbone conformation was analysed, and the total number of residues.

Mol	Chain	Analysed	Favoured	Allowed	Outliers	Percentiles	
1	A	440/446 (99%)	423 (96%)	17 (4%)	0	100	100
1	B	440/446 (99%)	425 (97%)	15 (3%)	0	100	100
1	C	429/446 (96%)	408 (95%)	19 (4%)	2 (0%)	34	26
1	D	423/446 (95%)	397 (94%)	25 (6%)	1 (0%)	52	48
All	All	1732/1784 (97%)	1653 (95%)	76 (4%)	3 (0%)	52	48

All (3) Ramachandran outliers are listed below:

Mol	Chain	Res	Type
1	C	419	LEU
1	C	46	ASN
1	D	420	GLY

5.3.2 Protein sidechains ⓘ

In the following table, the Percentiles column shows the percent sidechain outliers of the chain as a percentile score with respect to all X-ray entries followed by that with respect to entries of similar resolution.

The Analysed column shows the number of residues for which the sidechain conformation was analysed, and the total number of residues.

Mol	Chain	Analysed	Rotameric	Outliers	Percentiles	
1	A	356/360 (99%)	343 (96%)	13 (4%)	41	38
1	B	356/360 (99%)	348 (98%)	8 (2%)	60	62
1	C	351/360 (98%)	336 (96%)	15 (4%)	35	30
1	D	345/360 (96%)	337 (98%)	8 (2%)	58	60
All	All	1408/1440 (98%)	1364 (97%)	44 (3%)	47	46

All (44) residues with a non-rotameric sidechain are listed below:

Mol	Chain	Res	Type
1	A	6	THR
1	A	27	ASN
1	A	55	ILE
1	A	79	GLU
1	A	150	TYR
1	A	168	PRO
1	A	214	GLU
1	A	233	THR
1	A	318	THR
1	A	339	HIS
1	A	380	LYS
1	A	417	HIS
1	A	419	LEU
1	B	27	ASN
1	B	79	GLU
1	B	94	ARG
1	B	150	TYR
1	B	160	THR
1	B	339	HIS

Continued on next page...

Continued from previous page...

Mol	Chain	Res	Type
1	B	395	LYS
1	B	402	ILE
1	C	4	GLN
1	C	15	VAL
1	C	73	VAL
1	C	79	GLU
1	C	88	ARG
1	C	93	ASP
1	C	106	LEU
1	C	150	TYR
1	C	253	LYS
1	C	289	ASN
1	C	339	HIS
1	C	347	SER
1	C	351	PHE
1	C	395	LYS
1	C	439	ASN
1	D	14	GLN
1	D	73	VAL
1	D	150	TYR
1	D	214	GLU
1	D	233	THR
1	D	307	VAL
1	D	395	LYS
1	D	419	LEU

Some sidechains can be flipped to improve hydrogen bonding and reduce clashes. All (4) such sidechains are listed below:

Mol	Chain	Res	Type
1	C	179	HIS
1	D	229	GLN
1	D	339	HIS
1	D	372	GLN

5.3.3 RNA ⓘ

There are no RNA molecules in this entry.

5.4 Non-standard residues in protein, DNA, RNA chains ⓘ

There are no non-standard protein/DNA/RNA residues in this entry.

5.5 Carbohydrates ⓘ

There are no carbohydrates in this entry.

5.6 Ligand geometry ⓘ

Of 11 ligands modelled in this entry, 4 are monoatomic - leaving 7 for Mogul analysis.

In the following table, the Counts columns list the number of bonds (or angles) for which Mogul statistics could be retrieved, the number of bonds (or angles) that are observed in the model and the number of bonds (or angles) that are defined in the chemical component dictionary. The Link column lists molecule types, if any, to which the group is linked. The Z score for a bond length (or angle) is the number of standard deviations the observed value is removed from the expected value. A bond length (or angle) with $|Z| > 2$ is considered an outlier worth inspection. RMSZ is the root-mean-square of all Z scores of the bond lengths (or angles).

Mol	Type	Chain	Res	Link	Bond lengths			Bond angles		
					Counts	RMSZ	$\# Z > 2$	Counts	RMSZ	$\# Z > 2$
3	GLR	A	448	2	6,12,12	1.97	2 (33%)	4,16,16	1.62	1 (25%)
4	GOL	A	449	-	5,5,5	0.34	0	5,5,5	0.41	0
3	GLR	B	448	2	6,12,12	1.75	1 (16%)	4,16,16	1.15	0
4	GOL	B	449	-	5,5,5	0.22	0	5,5,5	0.56	0
3	GLR	C	448	2	6,12,12	2.06	3 (50%)	4,16,16	0.85	0
3	GLR	D	448	2	6,12,12	2.10	2 (33%)	4,16,16	0.26	0
4	GOL	D	449	-	5,5,5	0.18	0	5,5,5	0.48	0

In the following table, the Chirals column lists the number of chiral outliers, the number of chiral centers analysed, the number of these observed in the model and the number defined in the chemical component dictionary. Similar counts are reported in the Torsion and Rings columns. '-' means no outliers of that kind were identified.

Mol	Type	Chain	Res	Link	Chirals	Torsions	Rings
3	GLR	A	448	2	-	0/8/16/16	0/0/0/0
4	GOL	A	449	-	-	0/4/4/4	0/0/0/0
3	GLR	B	448	2	-	0/8/16/16	0/0/0/0
4	GOL	B	449	-	-	0/4/4/4	0/0/0/0
3	GLR	C	448	2	-	0/8/16/16	0/0/0/0
3	GLR	D	448	2	-	0/8/16/16	0/0/0/0
4	GOL	D	449	-	-	0/4/4/4	0/0/0/0

All (8) bond length outliers are listed below:

Mol	Chain	Res	Type	Atoms	Z	Observed(Å)	Ideal(Å)
3	C	448	GLR	O2-C2	2.18	1.47	1.42
3	C	448	GLR	C4-C5	2.46	1.54	1.51
3	A	448	GLR	C4-C5	2.70	1.55	1.51
3	D	448	GLR	C4-C5	2.83	1.55	1.51
3	A	448	GLR	O5-C5	3.31	1.28	1.22
3	B	448	GLR	O5-C5	3.37	1.28	1.22
3	C	448	GLR	O5-C5	3.44	1.28	1.22
3	D	448	GLR	O5-C5	3.45	1.28	1.22

All (1) bond angle outliers are listed below:

Mol	Chain	Res	Type	Atoms	Z	Observed(°)	Ideal(°)
3	A	448	GLR	O5-C5-C4	2.40	123.45	120.75

There are no chirality outliers.

There are no torsion outliers.

There are no ring outliers.

3 monomers are involved in 5 short contacts:

Mol	Chain	Res	Type	Clashes	Symm-Clashes
3	A	448	GLR	2	0
4	A	449	GOL	1	0
4	D	449	GOL	2	0

5.7 Other polymers [i](#)

There are no such residues in this entry.

5.8 Polymer linkage issues [i](#)

There are no chain breaks in this entry.

6 Fit of model and data ⓘ

6.1 Protein, DNA and RNA chains ⓘ

In the following table, the column labelled ‘#RSRZ> 2’ contains the number (and percentage) of RSRZ outliers, followed by percent RSRZ outliers for the chain as percentile scores relative to all X-ray entries and entries of similar resolution. The OWAB column contains the minimum, median, 95th percentile and maximum values of the occupancy-weighted average B-factor per residue. The column labelled ‘Q< 0.9’ lists the number of (and percentage) of residues with an average occupancy less than 0.9.

Mol	Chain	Analysed	<RSRZ>	#RSRZ>2	OWAB(Å ²)	Q<0.9
1	A	442/446 (99%)	0.18	14 (3%) 51 52	32, 44, 61, 79	0
1	B	442/446 (99%)	0.17	15 (3%) 49 50	32, 44, 62, 76	0
1	C	433/446 (97%)	0.32	27 (6%) 24 25	35, 52, 71, 86	0
1	D	427/446 (95%)	0.33	21 (4%) 33 35	38, 57, 77, 88	0
All	All	1744/1784 (97%)	0.25	77 (4%) 38 39	32, 49, 70, 88	0

All (77) RSRZ outliers are listed below:

Mol	Chain	Res	Type	RSRZ
1	D	430	TYR	7.0
1	C	430	TYR	7.0
1	C	106	LEU	5.5
1	C	420	GLY	5.2
1	A	101	LEU	5.2
1	D	418	GLY	4.9
1	B	420	GLY	4.8
1	A	96	ALA	4.5
1	C	93	ASP	4.3
1	D	429	GLN	4.0
1	D	168	PRO	3.8
1	C	107	ARG	3.6
1	C	163	PRO	3.6
1	D	433	PRO	3.6
1	D	435	TRP	3.5
1	D	432	ILE	3.5
1	C	436	THR	3.4
1	D	162	LEU	3.4
1	B	418	GLY	3.4
1	D	436	THR	3.4
1	C	162	LEU	3.4

Continued on next page...

Continued from previous page...

Mol	Chain	Res	Type	RSRZ
1	A	93	ASP	3.4
1	D	420	GLY	3.4
1	C	426	MET	3.3
1	C	94	ARG	3.3
1	C	433	PRO	3.3
1	D	426	MET	3.3
1	D	431	LEU	3.1
1	C	435	TRP	3.1
1	D	434	GLY	3.1
1	B	311	LEU	3.1
1	A	102	GLN	3.0
1	A	92	ALA	3.0
1	D	169	ASP	3.0
1	D	425	ALA	3.0
1	A	338	SER	3.0
1	C	148	LEU	3.0
1	B	150	TYR	3.0
1	C	437	PHE	2.9
1	D	161	PRO	2.9
1	B	98	GLY	2.8
1	B	367	THR	2.8
1	A	367	THR	2.8
1	A	97	GLY	2.7
1	A	106	LEU	2.6
1	C	351	PHE	2.6
1	B	92	ALA	2.6
1	D	428	MET	2.6
1	A	314	PRO	2.5
1	C	164	TYR	2.4
1	B	316	PHE	2.4
1	C	150	TYR	2.4
1	D	197	GLU	2.4
1	C	434	GLY	2.4
1	C	418	GLY	2.3
1	B	312	ALA	2.3
1	C	169	ASP	2.3
1	B	6	THR	2.3
1	A	229	GLN	2.2
1	B	5	PHE	2.2
1	D	158	LYS	2.2
1	B	365	ILE	2.2
1	A	95	ASP	2.2

Continued on next page...

Continued from previous page...

Mol	Chain	Res	Type	RSRZ
1	D	172	CYS	2.2
1	A	225	GLN	2.2
1	C	354	VAL	2.1
1	C	366	ASP	2.1
1	C	60	LYS	2.1
1	B	370	ILE	2.1
1	A	316	PHE	2.1
1	C	312	ALA	2.1
1	B	337	GLY	2.1
1	C	425	ALA	2.1
1	D	25	LEU	2.0
1	C	339	HIS	2.0
1	C	340	SER	2.0
1	B	416	LYS	2.0

6.2 Non-standard residues in protein, DNA, RNA chains [i](#)

There are no non-standard protein/DNA/RNA residues in this entry.

6.3 Carbohydrates [i](#)

There are no carbohydrates in this entry.

6.4 Ligands [i](#)

In the following table, the Atoms column lists the number of modelled atoms in the group and the number defined in the chemical component dictionary. LLDF column lists the quality of electron density of the group with respect to its neighbouring residues in protein, DNA or RNA chains. The B-factors column lists the minimum, median, 95th percentile and maximum values of B factors of atoms in the group. The column labelled 'Q< 0.9' lists the number of atoms with occupancy less than 0.9.

Mol	Type	Chain	Res	Atoms	RSCC	RSR	LLDF	B-factors(Å ²)	Q<0.9
3	GLR	D	448	13/13	0.66	0.24	2.85	57,65,67,67	0
4	GOL	B	449	6/6	0.89	0.15	2.20	34,37,45,51	0
2	MG	B	447	1/1	0.95	0.25	1.71	46,46,46,46	0
2	MG	D	447	1/1	0.77	0.18	1.33	56,56,56,56	0
2	MG	C	447	1/1	0.83	0.18	0.79	57,57,57,57	0
2	MG	A	447	1/1	0.89	0.18	0.38	49,49,49,49	0
4	GOL	A	449	6/6	0.92	0.11	0.23	34,43,45,45	0

Continued on next page...

Continued from previous page...

Mol	Type	Chain	Res	Atoms	RSCC	RSR	LLDF	B-factors(\AA^2)	Q<0.9
4	GOL	D	449	6/6	0.94	0.11	0.14	37,42,48,50	0
3	GLR	C	448	13/13	0.80	0.18	0.01	51,57,63,64	0
3	GLR	B	448	13/13	0.94	0.18	-0.15	38,46,49,51	0
3	GLR	A	448	13/13	0.91	0.17	-0.25	38,48,52,52	0

6.5 Other polymers [i](#)

There are no such residues in this entry.