



wwPDB X-ray Structure Validation Summary Report ⓘ

Feb 1, 2016 – 11:46 AM GMT

PDB ID : 3PX0
Title : Crystal Structure of Bacillus DNA Polymerase I Large Fragment Bound to DNA and dCTP-dA Mismatch (tautomer) in Closed Conformation
Authors : Wang, W.; Beese, L.S.
Deposited on : 2010-12-09
Resolution : 1.73 Å(reported)

This is a wwPDB X-ray Structure Validation Summary Report for a publicly released PDB entry.
We welcome your comments at validation@mail.wwpdb.org
A user guide is available at
<http://wwpdb.org/validation/2016/XrayValidationReportHelp>
with specific help available everywhere you see the ⓘ symbol.

The following versions of software and data (see [references ⓘ](#)) were used in the production of this report:

MolProbity : 4.02b-467
Mogul : 1.7 (RC4), CSD as536be (2015)
Xtriage (Phenix) : 1.9-1692
EDS : rb-20026688
Percentile statistics : 20151230.v01 (using entries in the PDB archive December 30th 2015)
Refmac : 5.8.0135
CCP4 : 6.5.0
Ideal geometry (proteins) : Engh & Huber (2001)
Ideal geometry (DNA, RNA) : Parkinson et al. (1996)
Validation Pipeline (wwPDB-VP) : trunk26865

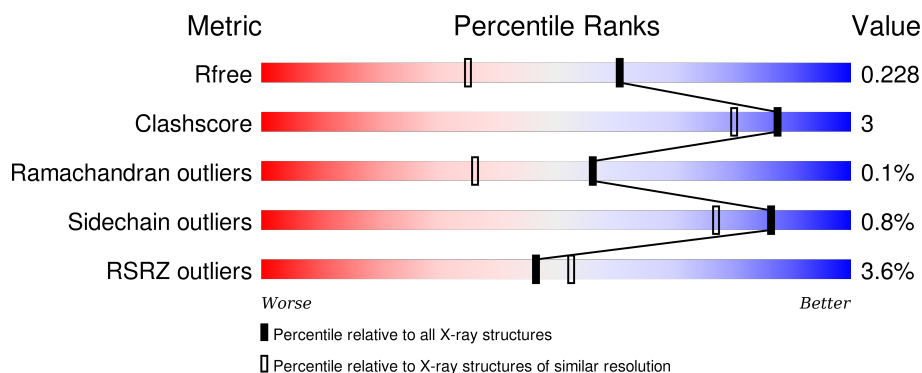
1 Overall quality at a glance

The following experimental techniques were used to determine the structure:

X-RAY DIFFRACTION

The reported resolution of this entry is 1.73 Å.

Percentile scores (ranging between 0-100) for global validation metrics of the entry are shown in the following graphic. The table shows the number of entries on which the scores are based.




Metric	Whole archive (#Entries)	Similar resolution (#Entries, resolution range(Å))
R_{free}	91344	2417 (1.76-1.72)
Clashscore	102246	2570 (1.76-1.72)
Ramachandran outliers	100387	2544 (1.76-1.72)
Sidechain outliers	100360	2544 (1.76-1.72)
RSRZ outliers	91569	2420 (1.76-1.72)

The table below summarises the geometric issues observed across the polymeric chains and their fit to the electron density. The red, orange, yellow and green segments on the lower bar indicate the fraction of residues that contain outliers for ≥ 3 , 2, 1 and 0 types of geometric quality criteria. A grey segment represents the fraction of residues that are not modelled. The numeric value for each fraction is indicated below the corresponding segment, with a dot representing fractions $\leq 5\%$. The upper red bar (where present) indicates the fraction of residues that have poor fit to the electron density. The numeric value is given above the bar.

Mol	Chain	Length	Quality of chain
1	A	592	<div> <div>6%</div> <div>88%</div> <div>7%</div> <div>6%</div> </div>
1	D	592	<div> <div>%</div> <div>93%</div> <div>5%</div> <div>.</div> </div>
2	B	9	<div> <div>56%</div> <div>44%</div> </div>
2	E	9	<div> <div>44%</div> <div>56%</div> </div>
3	C	13	<div> <div>8%</div> <div>46%</div> <div>46%</div> <div>8%</div> </div>

Continued on next page...

Continued from previous page...

Mol	Chain	Length	Quality of chain
3	F	13	 A horizontal bar chart showing the quality of chain F. The bar is divided into three segments: a green segment representing 62%, a yellow segment representing 31%, and a grey segment representing 8%. The percentages are labeled below the bar.

2 Entry composition [i](#)

There are 7 unique types of molecules in this entry. The entry contains 21278 atoms, of which 9802 are hydrogens and 0 are deuteriums.

In the tables below, the ZeroOcc column contains the number of atoms modelled with zero occupancy, the AltConf column contains the number of residues with at least one atom in alternate conformation and the Trace column contains the number of residues modelled with at most 2 atoms.

- Molecule 1 is a protein called DNA polymerase I.

Mol	Chain	Residues	Atoms						ZeroOcc	AltConf	Trace
1	A	557	Total	C	H	N	O	S	0	3	0
			9048	2855	4563	782	833	15			
1	D	579	Total	C	H	N	O	S	0	5	0
			9408	2968	4739	809	875	17			

There are 6 discrepancies between the modelled and reference sequences:

Chain	Residue	Modelled	Actual	Comment	Reference
A	598	ALA	ASP	ENGINEERED MUTATION	UNP Q5KWC1
A	710	TYR	PHE	ENGINEERED MUTATION	UNP Q5KWC1
A	823	HIS	ARG	SEE REMARK 999	UNP Q5KWC1
D	598	ALA	ASP	ENGINEERED MUTATION	UNP Q5KWC1
D	710	TYR	PHE	ENGINEERED MUTATION	UNP Q5KWC1
D	823	HIS	ARG	SEE REMARK 999	UNP Q5KWC1

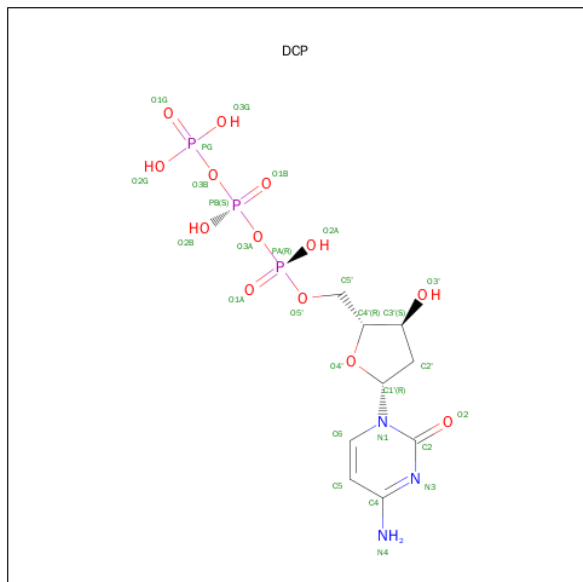
- Molecule 2 is a DNA chain called DNA (5'-D(*CP*CP*TP*GP*AP*CP*TP*CP*(DOC))-3').

Mol	Chain	Residues	Atoms						ZeroOcc	AltConf	Trace
2	B	9	Total	C	H	N	O	P	0	0	0
			275	85	101	29	52	8			
2	E	9	Total	C	H	N	O	P	0	0	0
			275	85	101	29	52	8			

- Molecule 3 is a DNA chain called DNA (5'-D(*C*AP*TP*AP*GP*GP*AP*GP*TP*CP*AP*GP*G)-3').

Mol	Chain	Residues	Atoms						ZeroOcc	AltConf	Trace
3	C	12	Total	C	H	N	O	P	0	0	0
			383	119	133	52	68	11			
3	F	12	Total	C	H	N	O	P	0	0	0
			383	119	133	52	68	11			

- Molecule 4 is 2'-DEOXYCYTIDINE-5'-TRIPHOSPHATE (three-letter code: DCP) (formula: $C_9H_{16}N_3O_{13}P_3$).



Mol	Chain	Residues	Atoms						ZeroOcc	AltConf
4	A	1	Total	C	H	N	O	P	0	0
			38	9	10	3	13	3		
4	A	1	Total	C	H	N	O	P	0	0
			40	9	12	3	13	3		
4	D	1	Total	C	H	N	O	P	0	0
			38	9	10	3	13	3		

- Molecule 5 is MANGANESE (II) ION (three-letter code: MN) (formula: Mn).

Mol	Chain	Residues	Atoms		ZeroOcc	AltConf
5	A	1	Total	Mn	0	0
			1	1		
5	D	1	Total	Mn	0	0
			1	1		

- Molecule 6 is SULFATE ION (three-letter code: SO4) (formula: O_4S).



Mol	Chain	Residues	Atoms			ZeroOcc	AltConf
6	A	1	Total	O	S	0	0
			5	4	1		
6	A	1	Total	O	S	0	0
			5	4	1		
6	D	1	Total	O	S	0	0
			5	4	1		
6	D	1	Total	O	S	0	0
			5	4	1		

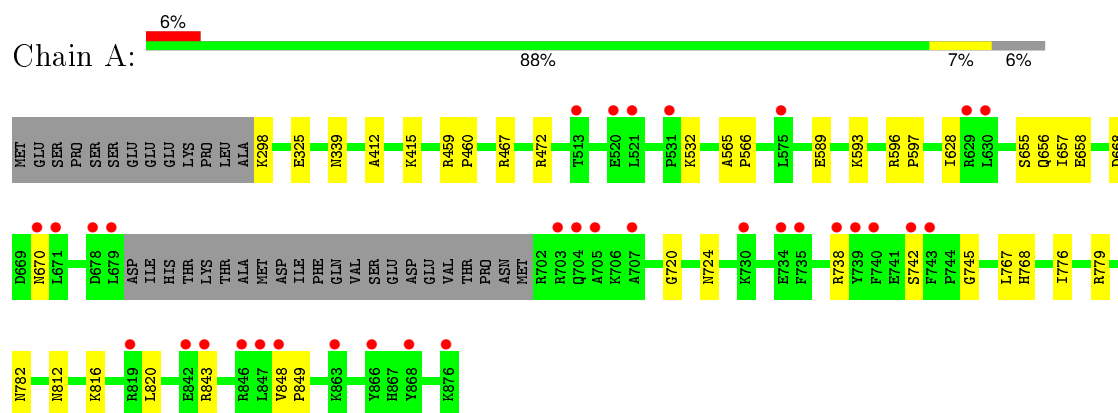
- Molecule 7 is water.

Mol	Chain	Residues	Atoms		ZeroOcc	AltConf
7	A	474	Total	O	0	0
			474	474		
7	D	714	Total	O	0	0
			714	714		
7	B	25	Total	O	0	0
			25	25		
7	C	56	Total	O	0	0
			56	56		
7	E	31	Total	O	0	0
			31	31		
7	F	68	Total	O	0	0
			68	68		

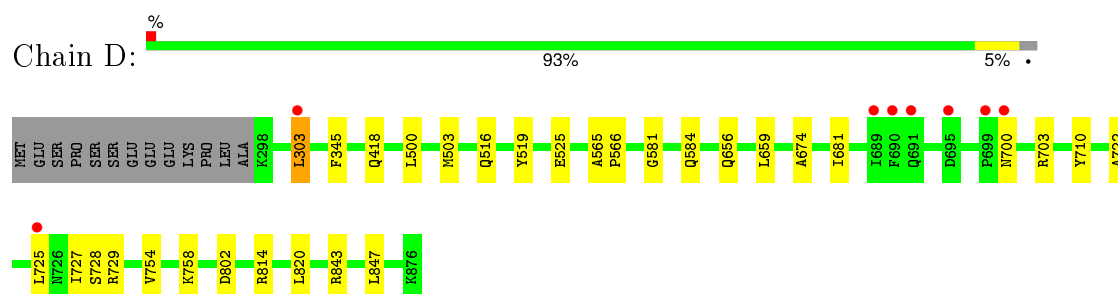
3 Residue-property plots [i](#)

These plots are drawn for all protein, RNA and DNA chains in the entry. The first graphic for a chain summarises the proportions of errors displayed in the second graphic. The second graphic shows the sequence view annotated by issues in geometry and electron density. Residues are color-coded according to the number of geometric quality criteria for which they contain at least one outlier: green = 0, yellow = 1, orange = 2 and red = 3 or more. A red dot above a residue indicates a poor fit to the electron density ($RSRZ > 2$). Stretches of 2 or more consecutive residues without any outlier are shown as a green connector. Residues present in the sample, but not in the model, are shown in grey.

- Molecule 1: DNA polymerase I



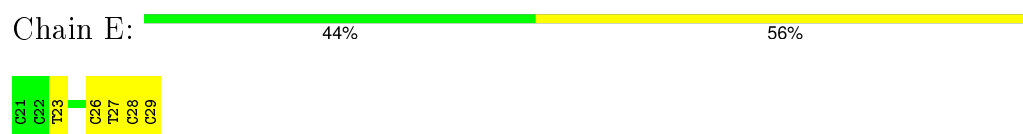
- Molecule 1: DNA polymerase I



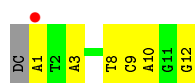
- Molecule 2: DNA (5'-D(*CP*CP*TP*GP*AP*CP*TP*CP*(DOC))-3')



- Molecule 2: DNA (5'-D(*CP*CP*TP*GP*AP*CP*TP*CP*(DOC))-3')



- Molecule 3: DNA (5'-D(*C*AP*TP*AP*GP*GP*AP*GP*TP*CP*AP*GP*G)-3')



- Molecule 3: DNA (5'-D(*C*AP*TP*AP*GP*GP*AP*GP*TP*CP*AP*GP*G)-3')



4 Data and refinement statistics

Property	Value	Source
Space group	P 21 21 21	Depositor
Cell constants a, b, c, α , β , γ	93.91Å 108.96Å 150.13Å 90.00° 90.00° 90.00°	Depositor
Resolution (Å)	34.24 – 1.73 64.28 – 1.73	Depositor EDS
% Data completeness (in resolution range)	93.2 (34.24-1.73) 93.2 (64.28-1.73)	Depositor EDS
R_{merge}	0.06	Depositor
R_{sym}	(Not available)	Depositor
$\langle I/\sigma(I) \rangle$ ¹	2.42 (at 1.73Å)	Xtriage
Refinement program	PHENIX (phenix.refine: 1.7.1_743)	Depositor
R, R_{free}	0.195 , 0.224 0.198 , 0.228	Depositor DCC
R_{free} test set	6687 reflections (4.68%)	DCC
Wilson B-factor (Å ²)	19.6	Xtriage
Anisotropy	0.108	Xtriage
Bulk solvent k_{sol} (e/Å ³), B_{sol} (Å ²)	0.39 , 50.5	EDS
Estimated twinning fraction	No twinning to report.	Xtriage
L-test for twinning ²	$\langle L \rangle = 0.48$, $\langle L^2 \rangle = 0.31$	Xtriage
Outliers	0 of 149646 reflections	Xtriage
F_o, F_c correlation	0.95	EDS
Total number of atoms	21278	wwPDB-VP
Average B, all atoms (Å ²)	31.0	wwPDB-VP

Xtriage's analysis on translational NCS is as follows: *The largest off-origin peak in the Patterson function is 3.29% of the height of the origin peak. No significant pseudotranslation is detected.*

¹Intensities estimated from amplitudes.

²Theoretical values of $\langle |L| \rangle$, $\langle L^2 \rangle$ for acentric reflections are 0.5, 0.375 respectively for untwinned datasets, and 0.333, 0.2 for perfectly twinned datasets.

5 Model quality [i](#)

5.1 Standard geometry [i](#)

Bond lengths and bond angles in the following residue types are not validated in this section: DOC, MN, SO4, DCP

The Z score for a bond length (or angle) is the number of standard deviations the observed value is removed from the expected value. A bond length (or angle) with $|Z| > 5$ is considered an outlier worth inspection. RMSZ is the root-mean-square of all Z scores of the bond lengths (or angles).

Mol	Chain	Bond lengths		Bond angles	
		RMSZ	# Z >5	RMSZ	# Z >5
1	A	0.38	0/4581	0.50	0/6189
1	D	0.49	0/4771	0.60	1/6447 (0.0%)
2	B	0.81	0/173	1.66	5/264 (1.9%)
2	E	0.90	0/173	1.57	4/264 (1.5%)
3	C	0.88	0/282	1.43	1/435 (0.2%)
3	F	0.91	0/282	1.39	5/435 (1.1%)
All	All	0.49	0/10262	0.70	16/14034 (0.1%)

There are no bond length outliers.

The worst 5 of 16 bond angle outliers are listed below:

Mol	Chain	Res	Type	Atoms	Z	Observed(°)	Ideal(°)
2	E	26	DC	O4'-C1'-N1	8.42	113.89	108.00
3	C	8	DT	O4'-C1'-N1	-8.35	102.15	108.00
2	E	23	DT	O4'-C1'-N1	-7.33	102.87	108.00
3	F	8	DT	N3-C4-O4	6.71	123.93	119.90
2	B	26	DC	O4'-C1'-N1	6.69	112.68	108.00

There are no chirality outliers.

There are no planarity outliers.

5.2 Too-close contacts [i](#)

In the following table, the Non-H and H(model) columns list the number of non-hydrogen atoms and hydrogen atoms in the chain respectively. The H(added) column lists the number of hydrogen atoms added and optimized by MolProbity. The Clashes column lists the number of clashes within the asymmetric unit, whereas Symm-Clashes lists symmetry related clashes.

Mol	Chain	Non-H	H(model)	H(added)	Clashes	Symm-Clashes
1	A	4485	4563	4542	24	0
1	D	4669	4739	4718	20	0
2	B	174	101	103	0	0
2	E	174	101	103	1	0
3	C	250	133	136	4	0
3	F	250	133	136	1	0
4	A	56	22	24	5	0
4	D	28	10	12	2	0
5	A	1	0	0	0	0
5	D	1	0	0	0	0
6	A	10	0	0	0	0
6	D	10	0	0	0	0
7	A	474	0	0	6	4
7	B	25	0	0	0	0
7	C	56	0	0	2	0
7	D	714	0	0	6	4
7	E	31	0	0	0	0
7	F	68	0	0	0	0
All	All	11476	9802	9774	51	4

The all-atom clashscore is defined as the number of clashes found per 1000 atoms (including hydrogen atoms). The all-atom clashscore for this structure is 3.

The worst 5 of 51 close contacts within the same asymmetric unit are listed below, sorted by their clash magnitude.

Atom-1	Atom-2	Interatomic distance (Å)	Clash overlap (Å)
1:D:584:GLN:HG2	7:D:969:HOH:O	1.78	0.82
4:A:201:DCP:HN41	3:C:3:DA:H61	1.30	0.78
4:D:202:DCP:HN41	3:F:3:DA:H61	1.38	0.71
1:D:581:GLY:HA3	7:D:974:HOH:O	1.99	0.62
1:D:814:ARG:NH1	7:D:1352:HOH:O	2.34	0.61

All (4) symmetry-related close contacts are listed below. The label for Atom-2 includes the symmetry operator and encoded unit-cell translations to be applied.

Atom-1	Atom-2	Interatomic distance (Å)	Clash overlap (Å)
7:A:1322:HOH:O	7:D:1323:HOH:O[4_445]	1.74	0.46
7:A:1198:HOH:O	7:D:1412:HOH:O[2_745]	1.86	0.34
7:A:1263:HOH:O	7:D:1267:HOH:O[2_745]	2.03	0.17
7:A:1357:HOH:O	7:D:1348:HOH:O[4_445]	2.14	0.06

5.3 Torsion angles [i](#)

5.3.1 Protein backbone [i](#)

In the following table, the Percentiles column shows the percent Ramachandran outliers of the chain as a percentile score with respect to all X-ray entries followed by that with respect to entries of similar resolution.

The Analysed column shows the number of residues for which the backbone conformation was analysed, and the total number of residues.

Mol	Chain	Analysed	Favoured	Allowed	Outliers	Percentiles	
1	A	556/592 (94%)	544 (98%)	11 (2%)	1 (0%)	52	32
1	D	582/592 (98%)	569 (98%)	13 (2%)	0	100	100
All	All	1138/1184 (96%)	1113 (98%)	24 (2%)	1 (0%)	56	36

All (1) Ramachandran outliers are listed below:

Mol	Chain	Res	Type
1	A	628	ILE

5.3.2 Protein sidechains [i](#)

In the following table, the Percentiles column shows the percent sidechain outliers of the chain as a percentile score with respect to all X-ray entries followed by that with respect to entries of similar resolution.

The Analysed column shows the number of residues for which the sidechain conformation was analysed, and the total number of residues.

Mol	Chain	Analysed	Rotameric	Outliers	Percentiles	
1	A	477/507 (94%)	471 (99%)	6 (1%)	76	60
1	D	500/507 (99%)	498 (100%)	2 (0%)	93	90
All	All	977/1014 (96%)	969 (99%)	8 (1%)	86	77

5 of 8 residues with a non-rotameric sidechain are listed below:

Mol	Chain	Res	Type
1	A	776	ILE
1	D	728	SER
1	A	812	ASN
1	A	742	SER
1	A	782	ASN

Some sidechains can be flipped to improve hydrogen bonding and reduce clashes. There are no such sidechains identified.

5.3.3 RNA ⓘ

There are no RNA molecules in this entry.

5.4 Non-standard residues in protein, DNA, RNA chains ⓘ

2 non-standard protein/DNA/RNA residues are modelled in this entry.

In the following table, the Counts columns list the number of bonds (or angles) for which Mogul statistics could be retrieved, the number of bonds (or angles) that are observed in the model and the number of bonds (or angles) that are defined in the chemical component dictionary. The Link column lists molecule types, if any, to which the group is linked. The Z score for a bond length (or angle) is the number of standard deviations the observed value is removed from the expected value. A bond length (or angle) with $|Z| > 2$ is considered an outlier worth inspection. RMSZ is the root-mean-square of all Z scores of the bond lengths (or angles).

Mol	Type	Chain	Res	Link	Bond lengths			Bond angles		
					Counts	RMSZ	# $ Z > 2$	Counts	RMSZ	# $ Z > 2$
2	DOC	B	29	3,2	11,19,20	0.73	0	14,26,29	1.20	1 (7%)
2	DOC	E	29	3,2	11,19,20	0.59	0	14,26,29	0.92	1 (7%)

In the following table, the Chirals column lists the number of chiral outliers, the number of chiral centers analysed, the number of these observed in the model and the number defined in the chemical component dictionary. Similar counts are reported in the Torsion and Rings columns. '-' means no outliers of that kind were identified.

Mol	Type	Chain	Res	Link	Chirals	Torsions	Rings
2	DOC	B	29	3,2	-	0/3/18/19	0/2/2/2
2	DOC	E	29	3,2	-	0/3/18/19	0/2/2/2

There are no bond length outliers.

All (2) bond angle outliers are listed below:

Mol	Chain	Res	Type	Atoms	Z	Observed(°)	Ideal(°)
2	E	29	DOC	C2-N3-C4	2.71	119.43	115.61
2	B	29	DOC	C2-N3-C4	3.35	120.33	115.61

There are no chirality outliers.

There are no torsion outliers.

There are no ring outliers.

1 monomer is involved in 1 short contact:

Mol	Chain	Res	Type	Clashes	Symm-Clashes
2	E	29	DOC	1	0

5.5 Carbohydrates [i](#)

There are no carbohydrates in this entry.

5.6 Ligand geometry [i](#)

Of 9 ligands modelled in this entry, 2 are monoatomic - leaving 7 for Mogul analysis.

In the following table, the Counts columns list the number of bonds (or angles) for which Mogul statistics could be retrieved, the number of bonds (or angles) that are observed in the model and the number of bonds (or angles) that are defined in the chemical component dictionary. The Link column lists molecule types, if any, to which the group is linked. The Z score for a bond length (or angle) is the number of standard deviations the observed value is removed from the expected value. A bond length (or angle) with $|Z| > 2$ is considered an outlier worth inspection. RMSZ is the root-mean-square of all Z scores of the bond lengths (or angles).

Mol	Type	Chain	Res	Link	Bond lengths			Bond angles		
					Counts	RMSZ	$\# Z > 2$	Counts	RMSZ	$\# Z > 2$
6	SO4	A	2	-	4,4,4	0.13	0	6,6,6	0.15	0
4	DCP	A	201	5	21,29,29	1.46	2 (9%)	33,45,45	1.68	4 (12%)
4	DCP	A	203	-	21,29,29	1.57	3 (14%)	33,45,45	1.65	5 (15%)
6	SO4	A	3	-	4,4,4	0.11	0	6,6,6	0.13	0
6	SO4	D	1	-	4,4,4	0.23	0	6,6,6	0.25	0
4	DCP	D	202	5	21,29,29	1.42	1 (4%)	33,45,45	1.34	5 (15%)
6	SO4	D	4	-	4,4,4	0.18	0	6,6,6	0.10	0

In the following table, the Chirals column lists the number of chiral outliers, the number of chiral centers analysed, the number of these observed in the model and the number defined in the chemical component dictionary. Similar counts are reported in the Torsion and Rings columns. '-' means no outliers of that kind were identified.

Mol	Type	Chain	Res	Link	Chirals	Torsions	Rings
6	SO4	A	2	-	-	0/0/0/0	0/0/0/0
4	DCP	A	201	5	-	0/18/34/34	0/2/2/2
4	DCP	A	203	-	-	0/18/34/34	0/2/2/2
6	SO4	A	3	-	-	0/0/0/0	0/0/0/0
6	SO4	D	1	-	-	0/0/0/0	0/0/0/0

Continued on next page...

Continued from previous page...

Mol	Type	Chain	Res	Link	Chirals	Torsions	Rings
4	DCP	D	202	5	-	0/18/34/34	0/2/2/2
6	SO4	D	4	-	-	0/0/0/0	0/0/0/0

The worst 5 of 6 bond length outliers are listed below:

Mol	Chain	Res	Type	Atoms	Z	Observed(Å)	Ideal(Å)
4	A	203	DCP	C2'-C3'	-4.83	1.39	1.52
4	A	201	DCP	C2'-C3'	-4.49	1.40	1.52
4	D	202	DCP	C2'-C3'	-4.14	1.41	1.52
4	A	203	DCP	O4'-C4'	-2.14	1.40	1.45
4	A	203	DCP	C4-N4	2.06	1.41	1.35

The worst 5 of 14 bond angle outliers are listed below:

Mol	Chain	Res	Type	Atoms	Z	Observed(°)	Ideal(°)
4	A	203	DCP	PB-O3A-PA	-5.03	118.60	132.73
4	A	203	DCP	PB-O3B-PG	-3.94	119.45	132.67
4	A	201	DCP	C2'-C1'-N1	-2.84	107.25	114.16
4	D	202	DCP	C2'-C1'-N1	-2.14	108.95	114.16
4	D	202	DCP	PB-O3A-PA	-2.08	126.89	132.73

There are no chirality outliers.

There are no torsion outliers.

There are no ring outliers.

3 monomers are involved in 7 short contacts:

Mol	Chain	Res	Type	Clashes	Symm-Clashes
4	A	201	DCP	3	0
4	A	203	DCP	2	0
4	D	202	DCP	2	0

5.7 Other polymers [i](#)

There are no such residues in this entry.

5.8 Polymer linkage issues [i](#)

There are no chain breaks in this entry.

6 Fit of model and data

6.1 Protein, DNA and RNA chains

In the following table, the column labelled ‘#RSRZ> 2’ contains the number (and percentage) of RSRZ outliers, followed by percent RSRZ outliers for the chain as percentile scores relative to all X-ray entries and entries of similar resolution. The OWAB column contains the minimum, median, 95th percentile and maximum values of the occupancy-weighted average B-factor per residue. The column labelled ‘Q< 0.9’ lists the number of (and percentage) of residues with an average occupancy less than 0.9.

Mol	Chain	Analysed	<RSRZ>	#RSRZ>2	OWAB(Å ²)	Q<0.9
1	A	557/592 (94%)	0.39	33 (5%) 26 30	15, 32, 54, 66	0
1	D	579/592 (97%)	0.15	8 (1%) 78 84	9, 20, 39, 52	0
2	B	8/9 (88%)	-0.30	0 100 100	19, 25, 44, 51	0
2	E	8/9 (88%)	-0.14	0 100 100	14, 24, 41, 50	0
3	C	12/13 (92%)	0.13	1 (8%) 14 17	18, 25, 60, 78	0
3	F	12/13 (92%)	0.16	0 100 100	12, 21, 47, 63	0
All	All	1176/1228 (95%)	0.26	42 (3%) 46 52	9, 26, 49, 78	0

The worst 5 of 42 RSRZ outliers are listed below:

Mol	Chain	Res	Type	RSRZ
1	A	735	PHE	5.1
1	A	630	LEU	4.8
1	A	819	ARG	4.7
1	A	743	PHE	4.1
3	C	1	DA	4.1

6.2 Non-standard residues in protein, DNA, RNA chains

In the following table, the Atoms column lists the number of modelled atoms in the group and the number defined in the chemical component dictionary. LLDF column lists the quality of electron density of the group with respect to its neighbouring residues in protein, DNA or RNA chains. The B-factors column lists the minimum, median, 95th percentile and maximum values of B factors of atoms in the group. The column labelled ‘Q< 0.9’ lists the number of atoms with occupancy less than 0.9.

Mol	Type	Chain	Res	Atoms	RSCC	RSR	LLDF	B-factors(Å ²)	Q<0.9
2	DOC	E	29	18/19	0.98	0.11	-	8,14,21,22	0
2	DOC	B	29	18/19	0.96	0.08	-	16,25,32,35	0

6.3 Carbohydrates [i](#)

There are no carbohydrates in this entry.

6.4 Ligands [i](#)

In the following table, the Atoms column lists the number of modelled atoms in the group and the number defined in the chemical component dictionary. LLDF column lists the quality of electron density of the group with respect to its neighbouring residues in protein, DNA or RNA chains. The B-factors column lists the minimum, median, 95th percentile and maximum values of B factors of atoms in the group. The column labelled 'Q< 0.9' lists the number of atoms with occupancy less than 0.9.

Mol	Type	Chain	Res	Atoms	RSCC	RSR	LLDF	B-factors(\AA^2)	Q<0.9
4	DCP	A	201	28/28	0.88	0.18	1.36	23,34,44,45	0
4	DCP	A	203	28/28	0.90	0.11	-0.17	30,46,72,84	0
4	DCP	D	202	28/28	0.95	0.09	-0.40	13,20,29,30	0
5	MN	A	1	1/1	0.98	0.08	-1.99	37,37,37,37	0
6	SO4	A	2	5/5	0.95	0.09	-2.55	33,34,43,48	0
5	MN	D	2	1/1	0.99	0.05	-2.94	20,20,20,20	0
6	SO4	D	4	5/5	0.94	0.26	-	50,51,56,58	0
6	SO4	D	1	5/5	0.98	0.09	-	28,33,41,43	0
6	SO4	A	3	5/5	0.89	0.28	-	48,51,60,65	0

6.5 Other polymers [i](#)

There are no such residues in this entry.