



Full wwPDB X-ray Structure Validation Report ⓘ

Feb 1, 2016 – 07:51 PM GMT

PDB ID : 4Q5O
Title : Crystal structure of EctD from *S. alaskensis* with 2-oxoglutarate and 5-hydroxyectoine
Authors : Hoepfner, A.; Widderich, N.; Bremer, E.; Smits, S.H.
Deposited on : 2014-04-17
Resolution : 2.64 Å(reported)

This is a Full wwPDB X-ray Structure Validation Report for a publicly released PDB entry.
We welcome your comments at validation@mail.wwpdb.org
A user guide is available at
<http://wwpdb.org/validation/2016/XrayValidationReportHelp>
with specific help available everywhere you see the ⓘ symbol.

The following versions of software and data (see [references ⓘ](#)) were used in the production of this report:

MolProbity : 4.02b-467
Mogul : 1.7 (RC4), CSD as536be (2015)
Xtriage (Phenix) : 1.9-1692
EDS : rb-20026688
Percentile statistics : 20151230.v01 (using entries in the PDB archive December 30th 2015)
Refmac : 5.8.0135
CCP4 : 6.5.0
Ideal geometry (proteins) : Engh & Huber (2001)
Ideal geometry (DNA, RNA) : Parkinson et al. (1996)
Validation Pipeline (wwPDB-VP) : trunk26865

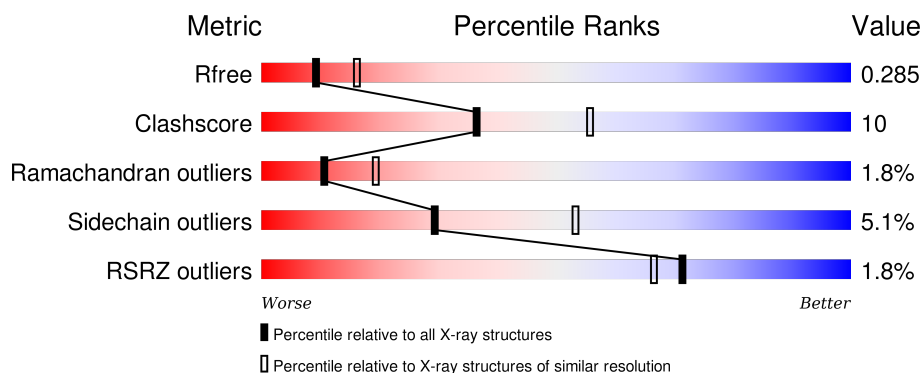
1 Overall quality at a glance ⓘ

The following experimental techniques were used to determine the structure:

X-RAY DIFFRACTION

The reported resolution of this entry is 2.64 Å.

Percentile scores (ranging between 0-100) for global validation metrics of the entry are shown in the following graphic. The table shows the number of entries on which the scores are based.



Metric	Whole archive (#Entries)	Similar resolution (#Entries, resolution range(Å))
R_{free}	91344	3377 (2.68-2.60)
Clashscore	102246	3781 (2.68-2.60)
Ramachandran outliers	100387	3722 (2.68-2.60)
Sidechain outliers	100360	3722 (2.68-2.60)
RSRZ outliers	91569	3388 (2.68-2.60)

The table below summarises the geometric issues observed across the polymeric chains and their fit to the electron density. The red, orange, yellow and green segments on the lower bar indicate the fraction of residues that contain outliers for ≥ 3 , 2, 1 and 0 types of geometric quality criteria. A grey segment represents the fraction of residues that are not modelled. The numeric value for each fraction is indicated below the corresponding segment, with a dot representing fractions $\leq 5\%$. The upper red bar (where present) indicates the fraction of residues that have poor fit to the electron density. The numeric value is given above the bar.

Mol	Chain	Length	Quality of chain
1	A	314	<div> <div>%</div> <div> <div></div> <div>69%</div> <div>18%</div> <div>•</div> <div>10%</div> </div> </div>
1	B	314	<div> <div>3%</div> <div> <div></div> <div>68%</div> <div>19%</div> <div>••</div> <div>10%</div> </div> </div>

The following table lists non-polymeric compounds, carbohydrate monomers and non-standard residues in protein, DNA, RNA chains that are outliers for geometric or electron-density-fit criteria:

Mol	Type	Chain	Res	Chirality	Geometry	Clashes	Electron density
4	6CS	A	403	-	-	-	X
4	6CS	B	403	-	-	X	X

2 Entry composition

There are 5 unique types of molecules in this entry. The entry contains 4469 atoms, of which 0 are hydrogens and 0 are deuteriums.

In the tables below, the ZeroOcc column contains the number of atoms modelled with zero occupancy, the AltConf column contains the number of residues with at least one atom in alternate conformation and the Trace column contains the number of residues modelled with at most 2 atoms.

- Molecule 1 is a protein called Ectoine hydroxylase.

Mol	Chain	Residues	Atoms					ZeroOcc	AltConf	Trace
1	A	282	Total	C	N	O	S	0	0	0
			2198	1389	397	403	9			
1	B	282	Total	C	N	O	S	0	0	0
			2198	1389	397	403	9			

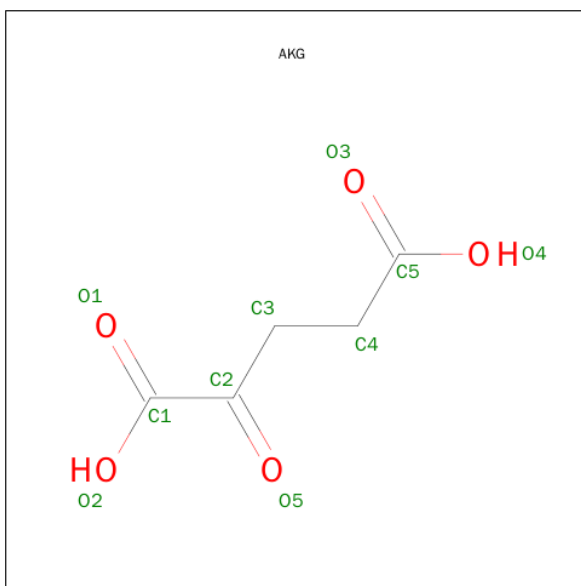
There are 16 discrepancies between the modelled and reference sequences:

Chain	Residue	Modelled	Actual	Comment	Reference
A	-7	HIS	-	EXPRESSION TAG	UNP Q1GNW5
A	-6	HIS	-	EXPRESSION TAG	UNP Q1GNW5
A	-5	HIS	-	EXPRESSION TAG	UNP Q1GNW5
A	-4	HIS	-	EXPRESSION TAG	UNP Q1GNW5
A	-3	HIS	-	EXPRESSION TAG	UNP Q1GNW5
A	-2	HIS	-	EXPRESSION TAG	UNP Q1GNW5
A	-1	SER	-	EXPRESSION TAG	UNP Q1GNW5
A	0	GLU	-	EXPRESSION TAG	UNP Q1GNW5
B	-7	HIS	-	EXPRESSION TAG	UNP Q1GNW5
B	-6	HIS	-	EXPRESSION TAG	UNP Q1GNW5
B	-5	HIS	-	EXPRESSION TAG	UNP Q1GNW5
B	-4	HIS	-	EXPRESSION TAG	UNP Q1GNW5
B	-3	HIS	-	EXPRESSION TAG	UNP Q1GNW5
B	-2	HIS	-	EXPRESSION TAG	UNP Q1GNW5
B	-1	SER	-	EXPRESSION TAG	UNP Q1GNW5
B	0	GLU	-	EXPRESSION TAG	UNP Q1GNW5

- Molecule 2 is FE (III) ION (three-letter code: FE) (formula: Fe).

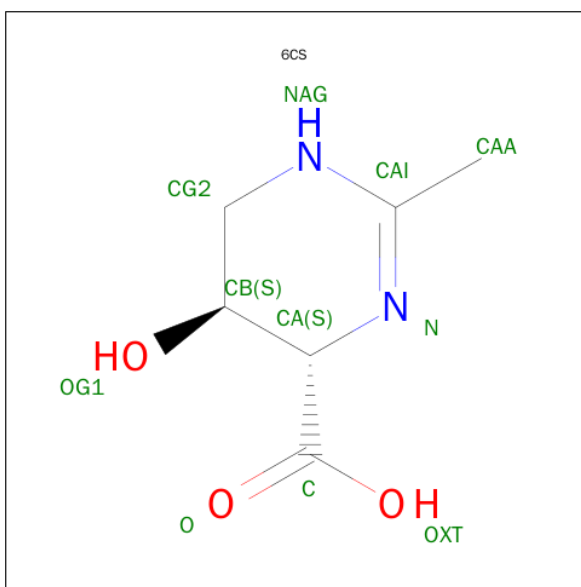
Mol	Chain	Residues	Atoms		ZeroOcc	AltConf
2	B	1	Total	Fe	0	0
			1	1		
2	A	1	Total	Fe	0	0
			1	1		

- Molecule 3 is 2-OXOGLUTARIC ACID (three-letter code: AKG) (formula: $C_5H_6O_5$).



Mol	Chain	Residues	Atoms			ZeroOcc	AltConf
3	A	1	Total	C	O	0	0
			10	5	5		
3	B	1	Total	C	O	0	0
			10	5	5		

- Molecule 4 is (4S,5S)-5-HYDROXY-2-METHYL-1,4,5,6-TETRAHYDOPYRIMIDINE-4-CARBOXYLIC ACID (three-letter code: 6CS) (formula: $C_6H_{10}N_2O_3$).



Mol	Chain	Residues	Atoms				ZeroOcc	AltConf
4	A	1	Total	C	N	O	0	0
			11	6	2	3		
4	B	1	Total	C	N	O	0	0
			11	6	2	3		

- Molecule 5 is water.

Mol	Chain	Residues	Atoms		ZeroOcc	AltConf
5	A	14	Total	O	0	0
			14	14		
5	B	15	Total	O	0	0
			15	15		

- Molecule 1: Ectoine hydroxylase



4 Data and refinement statistics

Property	Value	Source
Space group	P 21 21 21	Depositor
Cell constants a, b, c, α , β , γ	81.00Å 87.08Å 94.88Å 90.00° 90.00° 90.00°	Depositor
Resolution (Å)	30.00 – 2.64 40.94 – 2.64	Depositor EDS
% Data completeness (in resolution range)	99.8 (30.00-2.64) 99.8 (40.94-2.64)	Depositor EDS
R_{merge}	(Not available)	Depositor
R_{sym}	(Not available)	Depositor
$\langle I/\sigma(I) \rangle$ ¹	1.81 (at 2.65Å)	Xtriage
Refinement program	PHENIX (phenix.refine: 1.8.2_1309)	Depositor
R, R_{free}	0.206 , 0.279 0.211 , 0.285	Depositor DCC
R_{free} test set	1035 reflections (5.39%)	DCC
Wilson B-factor (Å ²)	57.6	Xtriage
Anisotropy	0.231	Xtriage
Bulk solvent k_{sol} (e/Å ³), B_{sol} (Å ²)	0.35 , 48.8	EDS
Estimated twinning fraction	No twinning to report.	Xtriage
L-test for twinning ²	$\langle L \rangle = 0.48$, $\langle L^2 \rangle = 0.32$	Xtriage
Outliers	0 of 20235 reflections	Xtriage
F_o, F_c correlation	0.94	EDS
Total number of atoms	4469	wwPDB-VP
Average B, all atoms (Å ²)	54.0	wwPDB-VP

Xtriage's analysis on translational NCS is as follows: *The largest off-origin peak in the Patterson function is 5.52% of the height of the origin peak. No significant pseudotranslation is detected.*

¹Intensities estimated from amplitudes.

²Theoretical values of $\langle |L| \rangle$, $\langle L^2 \rangle$ for acentric reflections are 0.5, 0.375 respectively for untwinned datasets, and 0.333, 0.2 for perfectly twinned datasets.

5 Model quality [i](#)

5.1 Standard geometry [i](#)

Bond lengths and bond angles in the following residue types are not validated in this section: 6CS, AKG, FE

The Z score for a bond length (or angle) is the number of standard deviations the observed value is removed from the expected value. A bond length (or angle) with $|Z| > 5$ is considered an outlier worth inspection. RMSZ is the root-mean-square of all Z scores of the bond lengths (or angles).

Mol	Chain	Bond lengths		Bond angles	
		RMSZ	$\# Z > 5$	RMSZ	$\# Z > 5$
1	A	0.43	0/2255	0.62	1/3070 (0.0%)
1	B	0.44	0/2255	0.62	1/3070 (0.0%)
All	All	0.44	0/4510	0.62	2/6140 (0.0%)

There are no bond length outliers.

All (2) bond angle outliers are listed below:

Mol	Chain	Res	Type	Atoms	Z	Observed(°)	Ideal(°)
1	A	279	PRO	N-CA-CB	6.26	110.81	103.30
1	B	279	PRO	N-CA-CB	5.92	110.41	103.30

There are no chirality outliers.

There are no planarity outliers.

5.2 Too-close contacts [i](#)

In the following table, the Non-H and H(model) columns list the number of non-hydrogen atoms and hydrogen atoms in the chain respectively. The H(added) column lists the number of hydrogen atoms added and optimized by MolProbity. The Clashes column lists the number of clashes within the asymmetric unit, whereas Symm-Clashes lists symmetry related clashes.

Mol	Chain	Non-H	H(model)	H(added)	Clashes	Symm-Clashes
1	A	2198	0	2123	42	0
1	B	2198	0	2123	44	0
2	A	1	0	0	0	0
2	B	1	0	0	0	0
3	A	10	0	4	0	0
3	B	10	0	4	2	0
4	A	11	0	8	2	0

Continued on next page...

Continued from previous page...

Mol	Chain	Non-H	H(model)	H(added)	Clashes	Symm-Clashes
4	B	11	0	9	8	0
5	A	14	0	0	0	0
5	B	15	0	0	0	0
All	All	4469	0	4271	83	0

The all-atom clashscore is defined as the number of clashes found per 1000 atoms (including hydrogen atoms). The all-atom clashscore for this structure is 10.

All (83) close contacts within the same asymmetric unit are listed below, sorted by their clash magnitude.

Atom-1	Atom-2	Interatomic distance (Å)	Clash overlap (Å)
1:A:146:ASP:OD1	4:A:403:6CS:OG1	1.75	1.05
1:B:146:ASP:OD1	4:B:403:6CS:OG1	1.89	0.90
1:B:127:GLN:HE22	4:B:403:6CS:HAA1	1.45	0.80
1:A:227:VAL:HG12	1:A:229:PRO:HD3	1.67	0.75
1:B:127:GLN:NE2	1:B:284:LEU:O	2.23	0.71
1:B:68:LEU:HD11	1:B:99:SER:HB2	1.74	0.70
1:B:179:MET:HE2	1:B:226:ILE:HG21	1.75	0.68
1:B:140:GLU:HB2	1:B:247:SER:O	1.97	0.65
1:B:144:HIS:CD2	1:B:146:ASP:OD1	2.51	0.63
1:A:140:GLU:HG2	1:B:251:ILE:HG21	1.79	0.63
1:A:280:ARG:HH22	4:A:403:6CS:HAA3	1.64	0.63
1:B:86:SER:OG	1:B:87:ASN:N	2.32	0.62
1:B:227:VAL:HG12	1:B:229:PRO:HD3	1.82	0.61
1:A:163:SER:HB3	1:A:260:PHE:CE1	2.35	0.61
1:B:146:ASP:CG	4:B:403:6CS:OG1	2.39	0.60
1:B:47:ILE:HG13	1:B:238:LEU:HD13	1.83	0.60
1:B:167:LEU:HA	1:B:258:ASN:HD22	1.67	0.59
1:A:8:ARG:HD2	1:A:152:VAL:HG11	1.85	0.59
1:B:94:GLU:HB3	1:B:97:ALA:HB3	1.86	0.56
1:B:69:LEU:HD21	1:B:132:TYR:HB2	1.88	0.56
1:B:139:ARG:HE	1:B:139:ARG:HA	1.70	0.55
1:A:69:LEU:HD22	1:A:89:ILE:HD13	1.88	0.54
1:B:280:ARG:HH12	4:B:403:6CS:HAA3	1.74	0.53
1:A:171:ASN:O	1:A:230:THR:HB	2.10	0.51
1:A:143:TRP:HA	1:A:245:HIS:O	2.09	0.51
1:A:113:ASP:OD1	1:A:116:ARG:NH1	2.44	0.51
1:B:144:HIS:CD2	4:B:403:6CS:OG1	2.64	0.51
1:A:14:GLU:H	1:A:190:THR:HG1	1.57	0.50
1:B:167:LEU:HA	1:B:258:ASN:ND2	2.26	0.50
1:A:252:THR:HG22	1:B:179:MET:HE3	1.94	0.50

Continued on next page...

Continued from previous page...

Atom-1	Atom-2	Interatomic distance (Å)	Clash overlap (Å)
1:B:75:LEU:HD13	1:B:80:ILE:HD11	1.93	0.50
1:B:42:ASP:OD2	1:B:186:ARG:NH2	2.44	0.50
1:A:140:GLU:HG2	1:B:251:ILE:CG2	2.41	0.49
1:A:124:TYR:CZ	1:A:290:PRO:HG3	2.48	0.48
1:B:96:HIS:O	1:B:103:ALA:HB2	2.14	0.48
1:A:276:VAL:O	1:A:278:LYS:N	2.47	0.48
1:A:42:ASP:OD1	1:A:186:ARG:NH2	2.45	0.48
1:B:95:ILE:O	1:B:102:MET:HB2	2.14	0.47
1:A:278:LYS:HA	1:A:279:PRO:HA	1.60	0.47
1:B:127:GLN:NE2	4:B:403:6CS:HAA1	2.21	0.47
1:B:49:LEU:HG	1:B:238:LEU:HD11	1.96	0.47
1:A:83:GLU:O	1:A:85:GLN:N	2.46	0.46
1:A:95:ILE:H	1:A:95:ILE:HG13	1.56	0.46
1:B:127:GLN:HE22	4:B:403:6CS:CAA	2.21	0.46
1:A:27:TRP:CD2	1:A:35:ALA:HB2	2.50	0.46
1:A:154:ASP:OD1	1:A:280:ARG:HD3	2.16	0.45
1:A:121:ASP:HB3	1:A:265:ALA:HB1	1.98	0.45
1:A:176:GLY:O	1:A:256:ARG:NH1	2.49	0.45
1:A:65:ALA:HB1	1:A:130:LEU:HD11	1.98	0.45
1:A:154:ASP:O	1:A:270:LEU:HD23	2.17	0.44
1:B:144:HIS:CD2	4:B:403:6CS:HOG1	2.33	0.44
1:A:61:LEU:HD21	1:A:300:LEU:HD13	1.99	0.44
1:A:176:GLY:O	1:A:256:ARG:HD3	2.18	0.44
1:A:121:ASP:OD2	1:A:267:SER:OG	2.34	0.44
1:A:52:ILE:HD11	1:A:236:VAL:HG21	1.98	0.44
1:A:75:LEU:HD13	1:A:92:ILE:HG21	2.00	0.43
1:B:287:ARG:HA	1:B:288:GLY:HA2	1.80	0.43
1:A:10:ARG:HG2	1:A:12:ASP:H	1.83	0.43
1:A:160:ARG:HB3	1:A:268:ASN:ND2	2.33	0.43
1:B:144:HIS:CE1	3:B:402:AKG:O5	2.70	0.43
1:B:69:LEU:HD12	1:B:92:ILE:HD12	2.00	0.43
1:A:89:ILE:HD12	1:A:89:ILE:O	2.18	0.43
1:B:32:PRO:HB2	1:B:114:VAL:HG22	2.00	0.43
1:B:278:LYS:HA	1:B:279:PRO:HA	1.71	0.43
1:B:280:ARG:HG2	1:B:281:PRO:HD2	2.00	0.43
1:B:238:LEU:HD12	1:B:238:LEU:N	2.34	0.43
1:A:20:ASP:OD1	1:A:158:ARG:HG3	2.18	0.43
1:B:171:ASN:O	1:B:230:THR:HB	2.19	0.43
1:A:89:ILE:H	1:A:89:ILE:HG13	1.47	0.42
1:A:140:GLU:HG3	1:A:248:ASN:HA	2.01	0.42
1:B:83:GLU:HG3	1:B:90:ARG:HD2	2.01	0.42

Continued on next page...

Continued from previous page...

Atom-1	Atom-2	Interatomic distance (Å)	Clash overlap (Å)
1:B:65:ALA:O	1:B:69:LEU:HD13	2.20	0.42
1:A:69:LEU:O	1:A:89:ILE:HG12	2.19	0.42
1:B:82:THR:HG23	1:B:84:PRO:HA	2.03	0.41
1:A:160:ARG:HG3	1:A:160:ARG:O	2.20	0.41
1:A:155:GLY:O	1:A:157:PRO:HD3	2.21	0.41
1:B:141:PHE:CG	3:B:402:AKG:H41	2.56	0.41
1:B:137:LYS:HB2	1:B:137:LYS:HE3	1.90	0.41
1:A:99:SER:HA	1:A:100:PRO:HD3	1.90	0.41
1:A:287:ARG:HA	1:A:288:GLY:HA2	1.90	0.40
1:B:153:GLU:HB3	1:B:280:ARG:HD2	2.03	0.40
1:A:52:ILE:HD11	1:A:236:VAL:CG2	2.52	0.40
1:B:63:LYS:HA	1:B:63:LYS:HD3	1.76	0.40

There are no symmetry-related clashes.

5.3 Torsion angles [i](#)

5.3.1 Protein backbone [i](#)

In the following table, the Percentiles column shows the percent Ramachandran outliers of the chain as a percentile score with respect to all X-ray entries followed by that with respect to entries of similar resolution.

The Analysed column shows the number of residues for which the backbone conformation was analysed, and the total number of residues.

Mol	Chain	Analysed	Favoured	Allowed	Outliers	Percentiles	
1	A	278/314 (88%)	261 (94%)	12 (4%)	5 (2%)	11	19
1	B	278/314 (88%)	253 (91%)	20 (7%)	5 (2%)	11	19
All	All	556/628 (88%)	514 (92%)	32 (6%)	10 (2%)	11	19

All (10) Ramachandran outliers are listed below:

Mol	Chain	Res	Type
1	A	85	GLN
1	A	277	GLU
1	A	279	PRO
1	B	83	GLU
1	B	84	PRO
1	B	277	GLU

Continued on next page...

Continued from previous page...

Mol	Chain	Res	Type
1	A	276	VAL
1	B	279	PRO
1	B	276	VAL
1	A	84	PRO

5.3.2 Protein sidechains ⓘ

In the following table, the Percentiles column shows the percent sidechain outliers of the chain as a percentile score with respect to all X-ray entries followed by that with respect to entries of similar resolution.

The Analysed column shows the number of residues for which the sidechain conformation was analysed, and the total number of residues.

Mol	Chain	Analysed	Rotameric	Outliers	Percentiles	
1	A	227/262 (87%)	222 (98%)	5 (2%)	60	83
1	B	227/262 (87%)	209 (92%)	18 (8%)	15	28
All	All	454/524 (87%)	431 (95%)	23 (5%)	29	53

All (23) residues with a non-rotameric sidechain are listed below:

Mol	Chain	Res	Type
1	A	140	GLU
1	A	158	ARG
1	A	160	ARG
1	A	286	ARG
1	A	297	ARG
1	B	4	LEU
1	B	68	LEU
1	B	75	LEU
1	B	83	GLU
1	B	129	ARG
1	B	130	LEU
1	B	139	ARG
1	B	158	ARG
1	B	160	ARG
1	B	170	GLU
1	B	223	ARG
1	B	238	LEU
1	B	256	ARG
1	B	267	SER

Continued on next page...

Continued from previous page...

Mol	Chain	Res	Type
1	B	269	ARG
1	B	276	VAL
1	B	296	GLU
1	B	301	VAL

Some sidechains can be flipped to improve hydrogen bonding and reduce clashes. All (2) such sidechains are listed below:

Mol	Chain	Res	Type
1	B	171	ASN
1	B	258	ASN

5.3.3 RNA [i](#)

There are no RNA molecules in this entry.

5.4 Non-standard residues in protein, DNA, RNA chains [i](#)

There are no non-standard protein/DNA/RNA residues in this entry.

5.5 Carbohydrates [i](#)

There are no carbohydrates in this entry.

5.6 Ligand geometry [i](#)

Of 6 ligands modelled in this entry, 2 are monoatomic - leaving 4 for Mogul analysis.

In the following table, the Counts columns list the number of bonds (or angles) for which Mogul statistics could be retrieved, the number of bonds (or angles) that are observed in the model and the number of bonds (or angles) that are defined in the chemical component dictionary. The Link column lists molecule types, if any, to which the group is linked. The Z score for a bond length (or angle) is the number of standard deviations the observed value is removed from the expected value. A bond length (or angle) with $|Z| > 2$ is considered an outlier worth inspection. RMSZ is the root-mean-square of all Z scores of the bond lengths (or angles).

Mol	Type	Chain	Res	Link	Bond lengths			Bond angles		
					Counts	RMSZ	$\# Z > 2$	Counts	RMSZ	$\# Z > 2$
3	AKG	A	402	2	3,9,9	0.38	0	4,11,11	2.03	2 (50%)
4	6CS	A	403	2	7,11,11	2.21	2 (28%)	7,15,15	3.19	5 (71%)

Mol	Type	Chain	Res	Link	Bond lengths			Bond angles		
					Counts	RMSZ	# Z > 2	Counts	RMSZ	# Z > 2
3	AKG	B	402	2	3,9,9	0.36	0	4,11,11	2.56	1 (25%)
4	6CS	B	403	-	7,11,11	2.72	2 (28%)	7,15,15	2.29	2 (28%)

In the following table, the Chirals column lists the number of chiral outliers, the number of chiral centers analysed, the number of these observed in the model and the number defined in the chemical component dictionary. Similar counts are reported in the Torsion and Rings columns. '-' means no outliers of that kind were identified.

Mol	Type	Chain	Res	Link	Chirals	Torsions	Rings
3	AKG	A	402	2	-	0/3/9/9	0/0/0/0
4	6CS	A	403	2	-	0/0/17/17	0/1/1/1
3	AKG	B	402	2	-	0/3/9/9	0/0/0/0
4	6CS	B	403	-	-	0/0/17/17	0/1/1/1

All (4) bond length outliers are listed below:

Mol	Chain	Res	Type	Atoms	Z	Observed(Å)	Ideal(Å)
4	B	403	6CS	CG2-NAG	-6.21	1.39	1.46
4	A	403	6CS	CG2-NAG	-4.61	1.41	1.46
4	A	403	6CS	CAI-N	2.30	1.32	1.28
4	B	403	6CS	CAI-N	2.38	1.32	1.28

All (10) bond angle outliers are listed below:

Mol	Chain	Res	Type	Atoms	Z	Observed(°)	Ideal(°)
3	B	402	AKG	C3-C4-C5	-4.81	103.93	112.75
3	A	402	AKG	C3-C4-C5	-3.06	107.14	112.75
4	A	403	6CS	CG2-NAG-CAI	-2.86	115.12	122.87
4	A	403	6CS	OG1-CB-CG2	-2.57	104.42	109.57
3	A	402	AKG	C4-C3-C2	-2.16	107.53	112.98
4	A	403	6CS	CAA-CAI-NAG	2.33	121.57	116.55
4	B	403	6CS	CB-CG2-NAG	3.73	118.22	111.19
4	B	403	6CS	CA-N-CAI	4.09	126.07	117.62
4	A	403	6CS	CA-N-CAI	4.59	127.10	117.62
4	A	403	6CS	CB-CG2-NAG	5.36	121.28	111.19

There are no chirality outliers.

There are no torsion outliers.

There are no ring outliers.

3 monomers are involved in 12 short contacts:

Mol	Chain	Res	Type	Clashes	Symm-Clashes
4	A	403	6CS	2	0
3	B	402	AKG	2	0
4	B	403	6CS	8	0

5.7 Other polymers [i](#)

There are no such residues in this entry.

5.8 Polymer linkage issues [i](#)

There are no chain breaks in this entry.

6 Fit of model and data ⓘ

6.1 Protein, DNA and RNA chains ⓘ

In the following table, the column labelled ‘#RSRZ> 2’ contains the number (and percentage) of RSRZ outliers, followed by percent RSRZ outliers for the chain as percentile scores relative to all X-ray entries and entries of similar resolution. The OWAB column contains the minimum, median, 95th percentile and maximum values of the occupancy-weighted average B-factor per residue. The column labelled ‘Q< 0.9’ lists the number of (and percentage) of residues with an average occupancy less than 0.9.

Mol	Chain	Analysed	<RSRZ>	#RSRZ>2	OWAB(Å ²)	Q<0.9
1	A	282/314 (89%)	-0.01	2 (0%) 89 87	32, 49, 75, 100	0
1	B	282/314 (89%)	0.17	8 (2%) 56 50	36, 55, 81, 103	0
All	All	564/628 (89%)	0.08	10 (1%) 71 66	32, 52, 80, 103	0

All (10) RSRZ outliers are listed below:

Mol	Chain	Res	Type	RSRZ
1	B	277	GLU	4.6
1	B	84	PRO	4.3
1	B	276	VAL	3.9
1	B	301	VAL	3.8
1	B	85	GLN	3.2
1	A	84	PRO	2.8
1	A	301	VAL	2.3
1	B	98	GLN	2.1
1	B	86	SER	2.1
1	B	11	ALA	2.1

6.2 Non-standard residues in protein, DNA, RNA chains ⓘ

There are no non-standard protein/DNA/RNA residues in this entry.

6.3 Carbohydrates ⓘ

There are no carbohydrates in this entry.

6.4 Ligands [i](#)

In the following table, the Atoms column lists the number of modelled atoms in the group and the number defined in the chemical component dictionary. LLDF column lists the quality of electron density of the group with respect to its neighbouring residues in protein, DNA or RNA chains. The B-factors column lists the minimum, median, 95th percentile and maximum values of B factors of atoms in the group. The column labelled 'Q< 0.9' lists the number of atoms with occupancy less than 0.9.

Mol	Type	Chain	Res	Atoms	RSCC	RSR	LLDF	B-factors(Å ²)	Q<0.9
4	6CS	B	403	11/11	0.81	0.37	5.29	66,70,76,77	0
4	6CS	A	403	11/11	0.72	0.30	4.15	69,77,80,82	0
3	AKG	A	402	10/10	0.80	0.27	1.80	66,78,86,90	0
3	AKG	B	402	10/10	0.92	0.18	0.91	54,59,71,72	0
2	FE	A	401	1/1	0.92	0.16	-	61,61,61,61	0
2	FE	B	401	1/1	0.95	0.14	-	52,52,52,52	0

6.5 Other polymers [i](#)

There are no such residues in this entry.