



Full wwPDB X-ray Structure Validation Report ⓘ

Feb 1, 2016 – 07:52 PM GMT

PDB ID : 4Q5V
Title : Crystal structure of the catalytic core of human DNA polymerase alpha in ternary complex with an RNA-primed DNA template and aphidicolin
Authors : Baranovskiy, A.G.; Babayeva, N.D.; Suwa, Y.; Gu, J.; Tahirov, T.H.
Deposited on : 2014-04-17
Resolution : 2.52 Å(reported)

This is a Full wwPDB X-ray Structure Validation Report for a publicly released PDB entry.
We welcome your comments at validation@mail.wwpdb.org
A user guide is available at
<http://wwpdb.org/validation/2016/XrayValidationReportHelp>
with specific help available everywhere you see the ⓘ symbol.

The following versions of software and data (see [references ⓘ](#)) were used in the production of this report:

MolProbity : 4.02b-467
Mogul : 1.7 (RC4), CSD as536be (2015)
Xtriage (Phenix) : 1.9-1692
EDS : rb-20026688
Percentile statistics : 20151230.v01 (using entries in the PDB archive December 30th 2015)
Refmac : 5.8.0135
CCP4 : 6.5.0
Ideal geometry (proteins) : Engh & Huber (2001)
Ideal geometry (DNA, RNA) : Parkinson et al. (1996)
Validation Pipeline (wwPDB-VP) : trunk26865

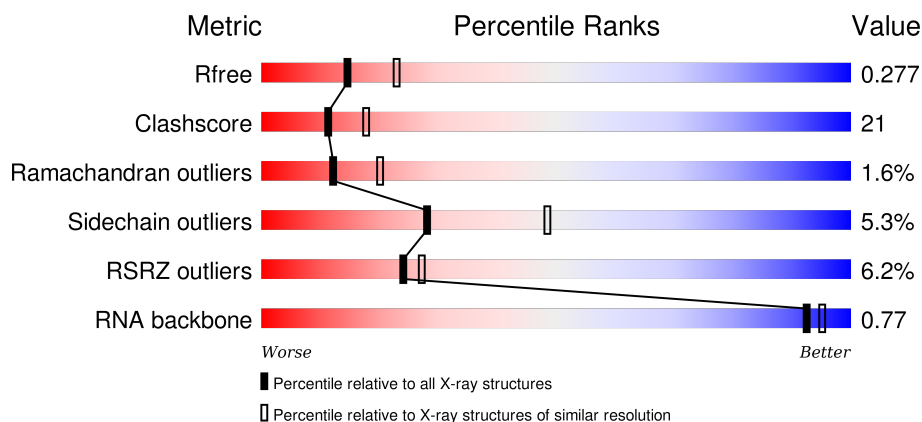
1 Overall quality at a glance

The following experimental techniques were used to determine the structure:

X-RAY DIFFRACTION

The reported resolution of this entry is 2.52 Å.

Percentile scores (ranging between 0-100) for global validation metrics of the entry are shown in the following graphic. The table shows the number of entries on which the scores are based.




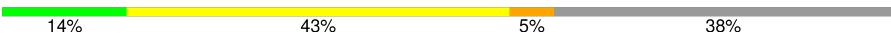
Metric	Whole archive (#Entries)	Similar resolution (#Entries, resolution range(Å))
R_{free}	91344	4241 (2.54-2.50)
Clashscore	102246	4968 (2.54-2.50)
Ramachandran outliers	100387	4873 (2.54-2.50)
Sidechain outliers	100360	4875 (2.54-2.50)
RSRZ outliers	91569	4253 (2.54-2.50)
RNA backbone	2183	1108 (3.00-2.04)

The table below summarises the geometric issues observed across the polymeric chains and their fit to the electron density. The red, orange, yellow and green segments on the lower bar indicate the fraction of residues that contain outliers for ≥ 3 , 2, 1 and 0 types of geometric quality criteria. A grey segment represents the fraction of residues that are not modelled. The numeric value for each fraction is indicated below the corresponding segment, with a dot representing fractions $\leq 5\%$. The upper red bar (where present) indicates the fraction of residues that have poor fit to the electron density. The numeric value is given above the bar.

Mol	Chain	Length	Quality of chain
1	A	922	<div> <div>7%</div> <div>60%</div> <div>30%</div> <div>6%</div> </div>
1	E	922	<div> <div>5%</div> <div>56%</div> <div>34%</div> <div>6%</div> </div>
2	B	11	<div> <div>9%</div> <div>82%</div> <div>9%</div> </div>
2	F	11	<div> <div>36%</div> <div>55%</div> <div>9%</div> </div>

Continued on next page...

Continued from previous page...

Mol	Chain	Length	Quality of chain
3	C	21	 10% 52% 38%
3	G	21	 14% 43% 5% 38%

2 Entry composition

There are 5 unique types of molecules in this entry. The entry contains 15085 atoms, of which 0 are hydrogens and 0 are deuteriums.

In the tables below, the ZeroOcc column contains the number of atoms modelled with zero occupancy, the AltConf column contains the number of residues with at least one atom in alternate conformation and the Trace column contains the number of residues modelled with at most 2 atoms.

- Molecule 1 is a protein called DNA polymerase alpha catalytic subunit.

Mol	Chain	Residues	Atoms					ZeroOcc	AltConf	Trace
1	A	865	Total	C	N	O	S	0	0	0
			6947	4470	1162	1274	41			
1	E	865	Total	C	N	O	S	0	0	0
			6947	4470	1162	1274	41			

There are 2 discrepancies between the modelled and reference sequences:

Chain	Residue	Modelled	Actual	Comment	Reference
A	516	ALA	VAL	ENGINEERED MUTATION	UNP P09884
E	516	ALA	VAL	ENGINEERED MUTATION	UNP P09884

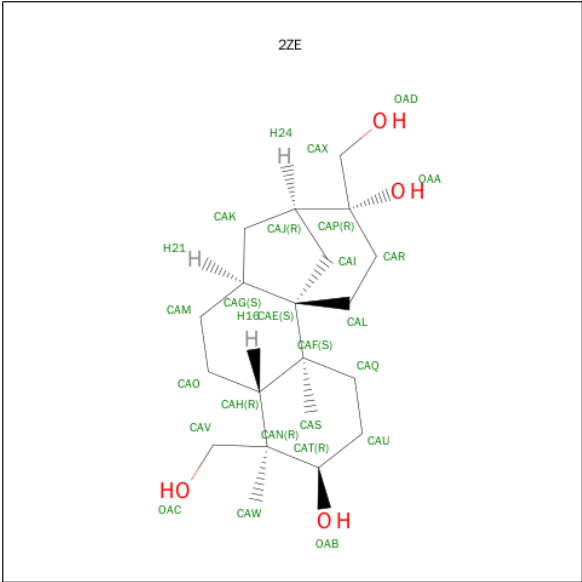
- Molecule 2 is a RNA chain called RNA primer.

Mol	Chain	Residues	Atoms					ZeroOcc	AltConf	Trace
2	B	11	Total	C	N	O	P	0	0	0
			232	105	44	73	10			
2	F	11	Total	C	N	O	P	0	0	0
			232	105	44	73	10			

- Molecule 3 is a DNA chain called DNA template.

Mol	Chain	Residues	Atoms					ZeroOcc	AltConf	Trace
3	C	13	Total	C	N	O	P	0	0	0
			264	125	52	75	12			
3	G	13	Total	C	N	O	P	0	0	0
			264	125	52	75	12			

- Molecule 4 is (3R,4R,4AR,6AS,8R,9R,11AS,11BS)-4,9-BIS(HYDROXYMETHYL)-4,11B-DIMETHYLTETRADECAHYDRO-8,11A-METHANOCYCLOHEPTA[A]NAPHTHALENE-3,9-DIOL (three-letter code: 2ZE) (formula: C₂₀H₃₄O₄).



Mol	Chain	Residues	Atoms			ZeroOcc	AltConf
4	A	1	Total	C	O	0	0
			24	20	4		
4	E	1	Total	C	O	0	0
			24	20	4		

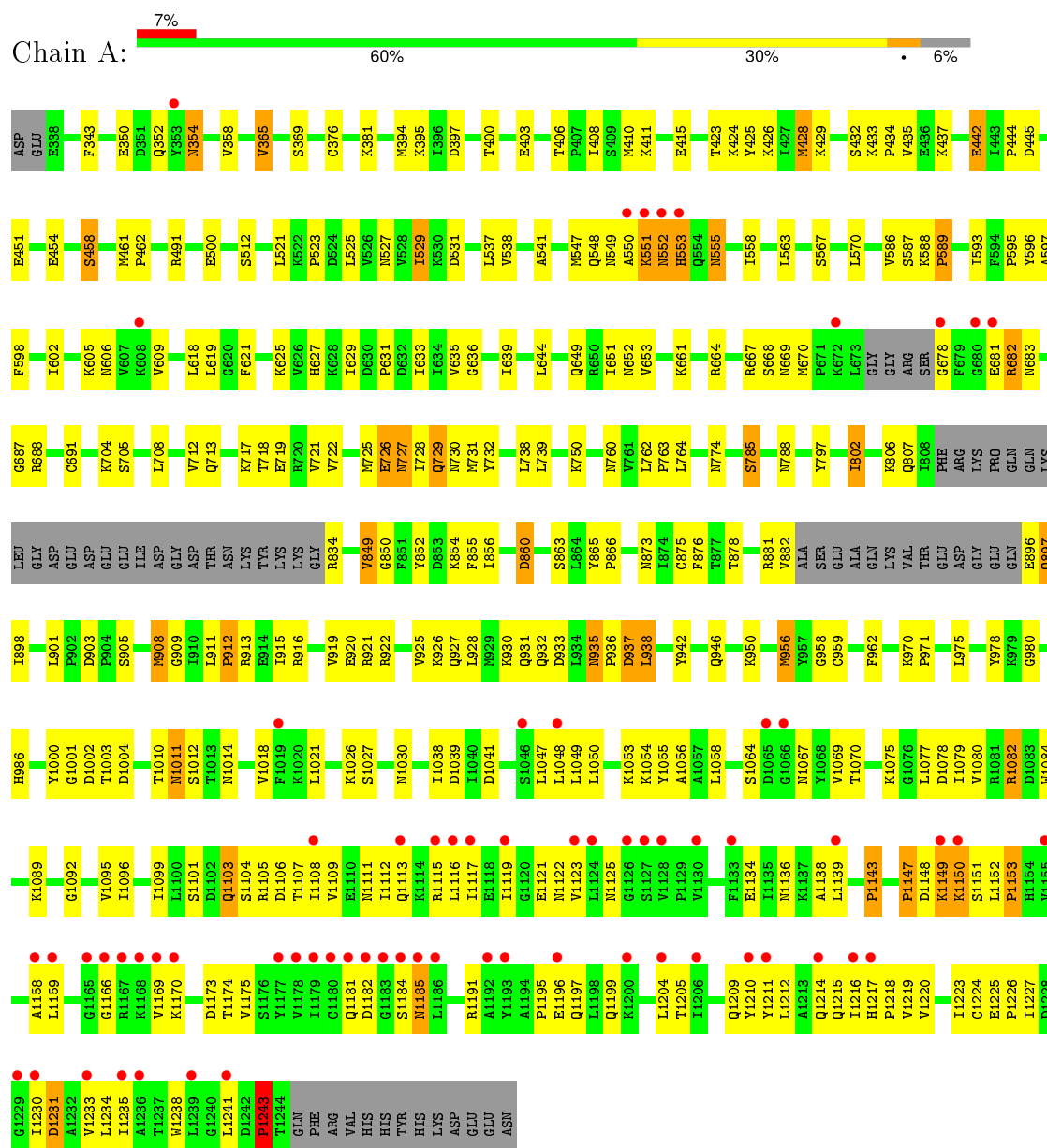
- Molecule 5 is water.

Mol	Chain	Residues	Atoms		ZeroOcc	AltConf
5	A	80	Total	O	0	0
			80	80		
5	B	1	Total	O	0	0
			1	1		
5	C	3	Total	O	0	0
			3	3		
5	E	62	Total	O	0	0
			62	62		
5	F	3	Total	O	0	0
			3	3		
5	G	2	Total	O	0	0
			2	2		

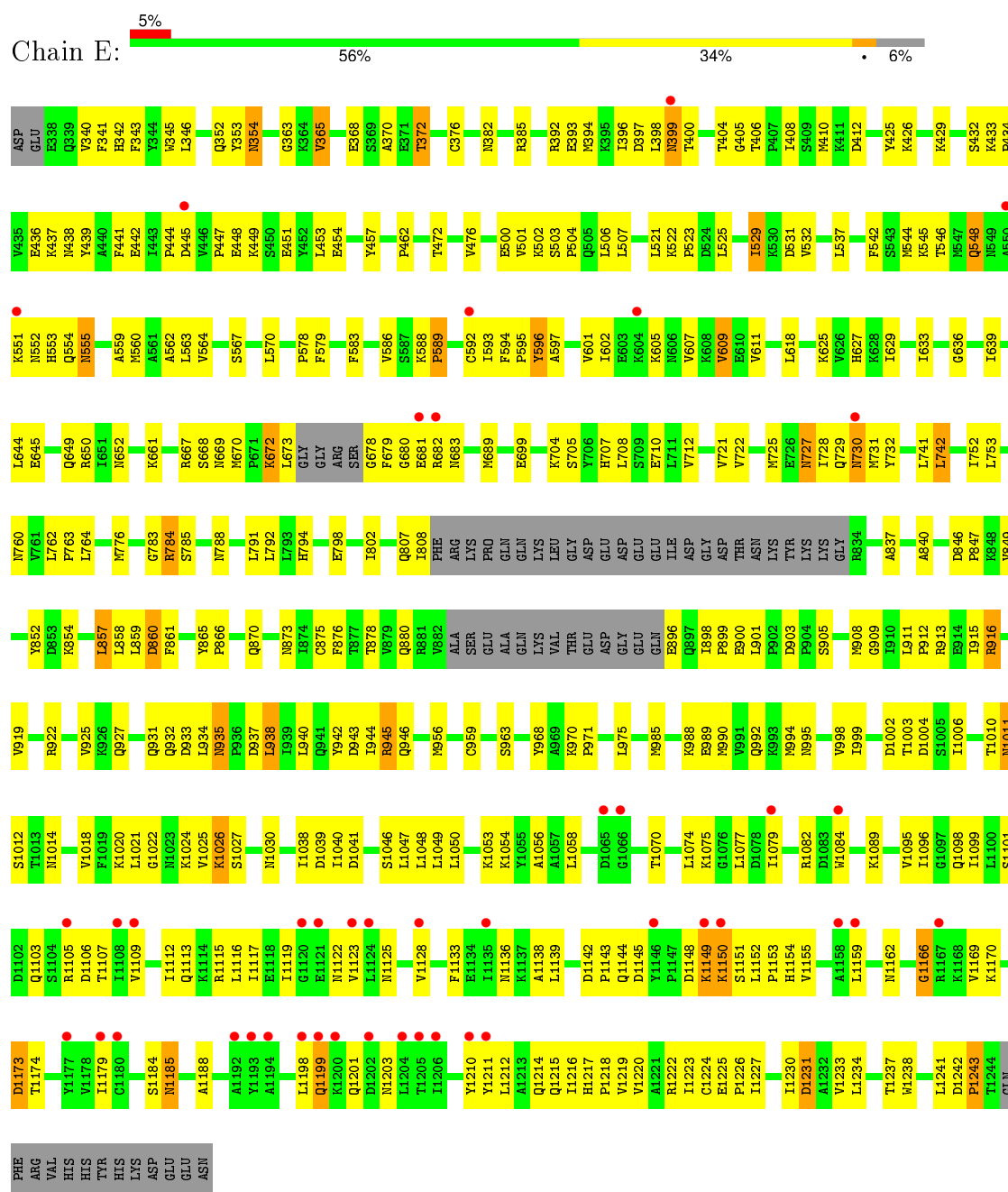
3 Residue-property plots

These plots are drawn for all protein, RNA and DNA chains in the entry. The first graphic for a chain summarises the proportions of errors displayed in the second graphic. The second graphic shows the sequence view annotated by issues in geometry and electron density. Residues are color-coded according to the number of geometric quality criteria for which they contain at least one outlier: green = 0, yellow = 1, orange = 2 and red = 3 or more. A red dot above a residue indicates a poor fit to the electron density ($\text{RSRZ} > 2$). Stretches of 2 or more consecutive residues without any outlier are shown as a green connector. Residues present in the sample, but not in the model, are shown in grey.

- Molecule 1: DNA polymerase alpha catalytic subunit



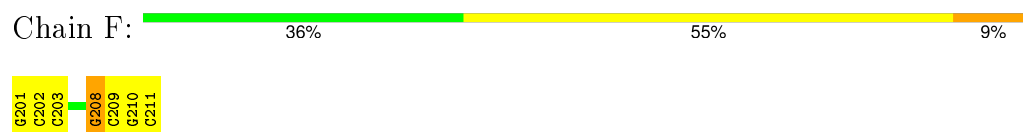
- Molecule 1: DNA polymerase alpha catalytic subunit



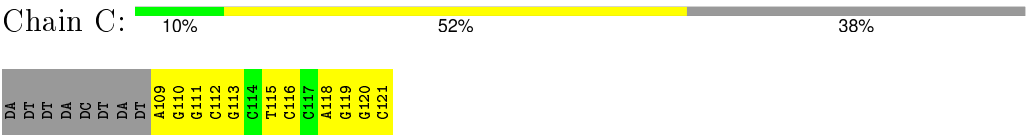
- Molecule 2: RNA primer



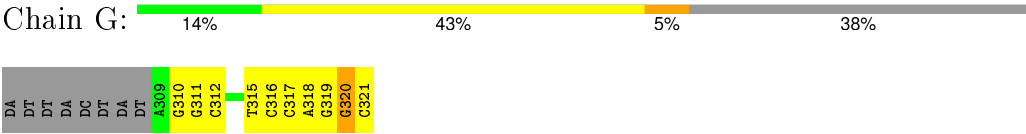
- Molecule 2: RNA primer



● Molecule 3: DNA template



● Molecule 3: DNA template



4 Data and refinement statistics

Property	Value	Source
Space group	P 21 21 21	Depositor
Cell constants a, b, c, α , β , γ	105.05Å 116.43Å 233.03Å 90.00° 90.00° 90.00°	Depositor
Resolution (Å)	78.02 – 2.52 78.02 – 2.52	Depositor EDS
% Data completeness (in resolution range)	96.0 (78.02-2.52) 96.1 (78.02-2.52)	Depositor EDS
R_{merge}	0.04	Depositor
R_{sym}	(Not available)	Depositor
$\langle I/\sigma(I) \rangle$ ¹	189.48 (at 2.51Å)	Xtriage
Refinement program	CNS 1.1	Depositor
R, R_{free}	0.233 , 0.268 0.246 , 0.277	Depositor DCC
R_{free} test set	4691 reflections (5.01%)	DCC
Wilson B-factor (Å ²)	42.8	Xtriage
Anisotropy	0.254	Xtriage
Bulk solvent k_{sol} (e/Å ³), B_{sol} (Å ²)	0.30 , 46.5	EDS
Estimated twinning fraction	No twinning to report.	Xtriage
L-test for twinning ²	$\langle L \rangle = 0.41$, $\langle L^2 \rangle = 0.24$	Xtriage
Outliers	0 of 94033 reflections	Xtriage
F_o, F_c correlation	0.93	EDS
Total number of atoms	15085	wwPDB-VP
Average B, all atoms (Å ²)	59.0	wwPDB-VP

Xtriage's analysis on translational NCS is as follows: *The largest off-origin peak in the Patterson function is 2.50% of the height of the origin peak. No significant pseudotranslation is detected.*

¹Intensities estimated from amplitudes.

²Theoretical values of $\langle |L| \rangle$, $\langle L^2 \rangle$ for acentric reflections are 0.5, 0.375 respectively for untwinned datasets, and 0.333, 0.2 for perfectly twinned datasets.

5 Model quality

5.1 Standard geometry

Bond lengths and bond angles in the following residue types are not validated in this section: 2ZE

The Z score for a bond length (or angle) is the number of standard deviations the observed value is removed from the expected value. A bond length (or angle) with $|Z| > 5$ is considered an outlier worth inspection. RMSZ is the root-mean-square of all Z scores of the bond lengths (or angles).

Mol	Chain	Bond lengths		Bond angles	
		RMSZ	# $ Z > 5$	RMSZ	# $ Z > 5$
1	A	0.45	0/7089	0.68	4/9582 (0.0%)
1	E	0.47	0/7089	0.67	4/9582 (0.0%)
2	B	0.45	0/259	0.89	2/402 (0.5%)
2	F	0.51	0/259	0.86	2/402 (0.5%)
3	C	0.46	0/296	0.81	0/455
3	G	0.45	0/296	0.77	0/455
All	All	0.46	0/15288	0.69	12/20878 (0.1%)

Chiral center outliers are detected by calculating the chiral volume of a chiral center and verifying if the center is modelled as a planar moiety or with the opposite hand. A planarity outlier is detected by checking planarity of atoms in a peptide group, atoms in a mainchain group or atoms of a sidechain that are expected to be planar.

Mol	Chain	#Chirality outliers	#Planarity outliers
3	G	0	1

There are no bond length outliers.

All (12) bond angle outliers are listed below:

Mol	Chain	Res	Type	Atoms	Z	Observed(°)	Ideal(°)
1	A	553	HIS	N-CA-C	7.66	131.67	111.00
2	B	8	G	O4'-C1'-N9	6.90	113.72	108.20
2	F	208	G	N9-C1'-C2'	6.16	122.01	114.00
1	A	552	ASN	N-CA-C	5.98	127.15	111.00
1	A	442	GLU	N-CA-C	5.67	126.31	111.00
1	E	553	HIS	N-CA-C	5.55	125.99	111.00
1	E	934	LEU	CA-CB-CG	5.50	127.96	115.30
1	A	802	ILE	N-CA-C	-5.47	96.22	111.00
2	B	8	G	C5'-C4'-C3'	-5.39	107.38	116.00
1	E	442	GLU	N-CA-C	5.25	125.16	111.00

Continued on next page...

Continued from previous page...

Mol	Chain	Res	Type	Atoms	Z	Observed(°)	Ideal(°)
2	F	208	G	O4'-C1'-N9	5.23	112.38	108.20
1	E	802	ILE	N-CA-C	-5.06	97.33	111.00

There are no chirality outliers.

All (1) planarity outliers are listed below:

Mol	Chain	Res	Type	Group
3	G	320	DG	Sidechain

5.2 Too-close contacts ⓘ

In the following table, the Non-H and H(model) columns list the number of non-hydrogen atoms and hydrogen atoms in the chain respectively. The H(added) column lists the number of hydrogen atoms added and optimized by MolProbity. The Clashes column lists the number of clashes within the asymmetric unit, whereas Symm-Clashes lists symmetry related clashes.

Mol	Chain	Non-H	H(model)	H(added)	Clashes	Symm-Clashes
1	A	6947	0	7092	268	0
1	E	6947	0	7092	297	0
2	B	232	0	120	9	0
2	F	232	0	120	6	0
3	C	264	0	146	15	0
3	G	264	0	146	15	0
4	A	24	0	34	8	0
4	E	24	0	34	6	0
5	A	80	0	0	12	0
5	B	1	0	0	0	0
5	C	3	0	0	2	0
5	E	62	0	0	7	0
5	F	3	0	0	0	0
5	G	2	0	0	2	0
All	All	15085	0	14784	611	0

The all-atom clashscore is defined as the number of clashes found per 1000 atoms (including hydrogen atoms). The all-atom clashscore for this structure is 21.

All (611) close contacts within the same asymmetric unit are listed below, sorted by their clash magnitude.

Atom-1	Atom-2	Interatomic distance (Å)	Clash overlap (Å)
3:G:315:DT:H2"	3:G:316:DC:H5"	1.30	1.14

Continued on next page...

Continued from previous page...

Atom-1	Atom-2	Interatomic distance (Å)	Clash overlap (Å)
1:E:908:MET:HE2	1:E:916:ARG:HH11	1.13	1.08
1:A:652:ASN:HD22	1:A:670:MET:HE3	1.19	1.04
1:A:1233:VAL:HG13	1:A:1243:PRO:HB3	1.36	1.03
1:E:555:ASN:H	1:E:555:ASN:HD22	1.08	1.01
1:A:1224:CYS:HA	1:A:1227:ILE:HD13	1.41	1.00
4:A:1301:2ZE:H4	4:A:1301:2ZE:H14	1.41	0.99
3:G:315:DT:H2''	3:G:316:DC:C5'	1.96	0.96
1:E:708:LEU:O	1:E:712:VAL:HG23	1.66	0.96
4:E:1301:2ZE:H14	4:E:1301:2ZE:H4	1.46	0.95
1:E:922:ARG:HG3	1:E:946:GLN:HE21	1.32	0.94
3:C:120:DG:N7	5:C:201:HOH:O	1.99	0.94
1:E:1150:LYS:HD2	1:E:1150:LYS:H	1.31	0.93
1:E:554:GLN:NE2	1:E:650:ARG:HH12	1.68	0.92
1:E:727:ASN:HD22	1:E:727:ASN:N	1.67	0.91
1:E:922:ARG:HG3	1:E:946:GLN:NE2	1.86	0.90
1:A:1150:LYS:H	1:A:1150:LYS:HD2	1.37	0.89
1:A:354:ASN:HD22	1:A:354:ASN:N	1.69	0.89
1:E:908:MET:CE	1:E:916:ARG:HH11	1.88	0.86
1:E:1040:ILE:N	5:E:1447:HOH:O	1.97	0.86
1:E:555:ASN:H	1:E:555:ASN:ND2	1.73	0.85
3:C:113:DG:OP2	5:C:202:HOH:O	1.93	0.85
1:E:908:MET:HE2	1:E:916:ARG:HD3	1.59	0.84
1:E:854:LYS:HG3	1:E:1011:ASN:HD22	1.41	0.84
1:E:1010:THR:HG22	1:E:1021:LEU:HD23	1.58	0.83
1:A:727:ASN:N	1:A:727:ASN:HD22	1.74	0.83
1:A:921:ARG:HD3	5:A:1479:HOH:O	1.79	0.82
1:A:727:ASN:H	1:A:727:ASN:HD22	1.24	0.82
1:E:840:ALA:HB3	5:E:1453:HOH:O	1.78	0.81
1:A:1122:ASN:HA	1:A:1125:ASN:HD21	1.46	0.80
1:E:727:ASN:HD22	1:E:727:ASN:H	1.29	0.80
3:C:118:DA:H2''	3:C:119:DG:H5'	1.62	0.79
1:E:785:SER:HB3	5:G:402:HOH:O	1.83	0.79
1:A:555:ASN:H	1:A:555:ASN:HD22	1.27	0.79
1:E:354:ASN:N	1:E:354:ASN:HD22	1.78	0.78
1:E:1122:ASN:HA	1:E:1125:ASN:HD21	1.49	0.78
3:C:115:DT:H2''	3:C:116:DC:C5'	2.14	0.78
1:E:727:ASN:ND2	1:E:727:ASN:H	1.80	0.77
1:A:1010:THR:HG22	1:A:1021:LEU:HD23	1.66	0.77
1:A:636:GLY:HA3	1:A:639:ILE:HD11	1.65	0.77
1:A:908:MET:CE	1:A:916:ARG:HD2	2.15	0.76
1:E:672:LYS:HG3	1:E:673:LEU:H	1.50	0.75

Continued on next page...

Continued from previous page...

Atom-1	Atom-2	Interatomic distance (Å)	Clash overlap (Å)
1:A:555:ASN:ND2	1:A:555:ASN:H	1.85	0.75
1:E:860:ASP:HB2	1:E:1041:ASP:HB2	1.69	0.74
1:A:365:VAL:HG22	1:A:376:CYS:HB2	1.69	0.74
1:E:1233:VAL:HG13	1:E:1243:PRO:HB3	1.68	0.74
1:E:554:GLN:HE22	1:E:650:ARG:HH12	1.34	0.74
1:A:1234:LEU:HG	1:A:1238:TRP:CZ2	2.22	0.73
3:C:115:DT:H2''	3:C:116:DC:H5'	1.69	0.72
1:A:1212:LEU:HD23	1:A:1216:ILE:HD12	1.70	0.72
1:E:340:VAL:HG23	1:E:501:VAL:O	1.88	0.72
1:E:783:GLY:HA2	3:G:310:DG:OP2	1.90	0.71
1:A:1095:VAL:O	1:A:1099:ILE:HG13	1.91	0.71
1:E:1113:GLN:HG3	1:E:1238:TRP:NE1	2.05	0.71
1:E:875:CYS:HB2	1:E:912:PRO:HD3	1.73	0.70
1:A:397:ASP:OD2	1:A:400:THR:HG23	1.90	0.70
3:C:120:DG:H2''	3:C:121:DC:OP2	1.92	0.70
2:F:208:G:H1'	2:F:209:C:C6	2.26	0.70
1:A:956:MET:HE2	1:A:956:MET:HA	1.72	0.70
1:E:529:ILE:HD11	1:E:532:VAL:HG23	1.72	0.70
1:A:1185:ASN:HD22	1:A:1185:ASN:C	1.94	0.70
1:E:730:ASN:HD22	1:E:730:ASN:N	1.90	0.70
1:E:1150:LYS:HD2	1:E:1150:LYS:N	2.06	0.69
1:E:636:GLY:HA3	1:E:639:ILE:HD11	1.74	0.69
1:A:1225:GLU:HB3	1:A:1226:PRO:HD3	1.73	0.69
1:E:667:ARG:NH1	1:E:683:ASN:O	2.25	0.69
1:A:727:ASN:ND2	1:A:727:ASN:H	1.91	0.68
1:E:915:ILE:HD11	1:E:956:MET:HG2	1.75	0.68
1:E:1113:GLN:HG3	1:E:1238:TRP:CE2	2.29	0.68
1:A:1104:SER:HA	5:A:1473:HOH:O	1.93	0.68
3:C:109:DA:H4'	3:C:110:DG:OP2	1.93	0.68
1:E:730:ASN:ND2	1:E:730:ASN:H	1.92	0.67
1:A:1224:CYS:CA	1:A:1227:ILE:HD13	2.20	0.67
1:A:863:SER:HA	5:A:1411:HOH:O	1.95	0.67
1:E:1225:GLU:HB3	1:E:1226:PRO:HD3	1.76	0.67
1:A:354:ASN:N	1:A:354:ASN:ND2	2.43	0.67
1:E:854:LYS:HG3	1:E:1011:ASN:HA	1.76	0.67
1:E:1122:ASN:HA	1:E:1125:ASN:ND2	2.09	0.67
1:E:394:MET:CE	1:E:405:GLY:HA2	2.25	0.67
1:A:908:MET:HE2	1:A:916:ARG:HD2	1.76	0.67
1:A:667:ARG:NH1	1:A:683:ASN:O	2.27	0.66
1:E:865:TYR:HB2	1:E:866:PRO:HD3	1.77	0.66
3:G:318:DA:H2''	3:G:319:DG:H5'	1.77	0.66

Continued on next page...

Continued from previous page...

Atom-1	Atom-2	Interatomic distance (Å)	Clash overlap (Å)
2:B:10:G:H2'	2:B:11:DC:C6	2.31	0.66
1:E:935:ASN:HB3	1:E:938:LEU:HD22	1.78	0.65
1:A:1105:ARG:O	1:A:1109:VAL:HG23	1.96	0.65
1:E:595:PRO:HD3	1:E:732:TYR:O	1.97	0.65
1:A:1217:HIS:HB3	1:A:1218:PRO:HD3	1.79	0.65
1:E:1115:ARG:O	1:E:1119:ILE:HG12	1.96	0.65
1:E:1211:TYR:O	1:E:1216:ILE:HG13	1.96	0.65
1:A:618:LEU:HD23	1:A:619:LEU:N	2.12	0.65
1:E:408:ILE:HD13	1:E:472:THR:HA	1.79	0.65
4:A:1301:2ZE:H4	4:A:1301:2ZE:CAS	2.24	0.65
1:E:394:MET:HE3	1:E:405:GLY:HA2	1.79	0.65
1:E:652:ASN:HD22	1:E:670:MET:CE	2.09	0.65
1:E:1026:LYS:HG3	1:E:1030:ASN:ND2	2.11	0.64
1:E:1109:VAL:HG13	1:E:1230:ILE:CD1	2.27	0.64
1:A:352:GLN:HB2	5:A:1438:HOH:O	1.98	0.64
1:A:1149:LYS:HG2	1:A:1150:LYS:N	2.11	0.64
1:A:1109:VAL:HG13	1:A:1230:ILE:CD1	2.28	0.64
1:A:860:ASP:HB2	1:A:1041:ASP:HB2	1.79	0.63
1:E:669:ASN:HD22	1:E:669:ASN:N	1.95	0.63
1:A:410:MET:HE3	1:A:451:GLU:HG2	1.80	0.63
1:A:962:PHE:CZ	3:C:109:DA:H5'	2.34	0.63
1:A:595:PRO:HG3	1:A:732:TYR:O	1.99	0.62
1:A:908:MET:HE1	1:A:916:ARG:HD2	1.81	0.62
1:A:555:ASN:HD22	1:A:555:ASN:N	1.94	0.62
1:A:962:PHE:HZ	3:C:109:DA:H5'	1.64	0.62
1:E:725:MET:SD	1:E:1166:GLY:HA3	2.39	0.62
1:A:806:LYS:HD2	5:A:1480:HOH:O	1.99	0.62
4:A:1301:2ZE:CAW	4:A:1301:2ZE:H14	2.25	0.62
3:C:115:DT:H2''	3:C:116:DC:H5''	1.81	0.62
1:E:730:ASN:ND2	1:E:730:ASN:N	2.47	0.62
1:E:507:LEU:HD12	1:E:507:LEU:N	2.15	0.62
1:E:354:ASN:ND2	1:E:354:ASN:N	2.47	0.61
1:A:1111:ASN:N	1:A:1111:ASN:HD22	1.96	0.61
1:E:909:GLY:C	1:E:912:PRO:HD2	2.21	0.61
1:A:1181:GLN:HB2	1:A:1205:THR:HG23	1.83	0.61
1:E:857:LEU:HD11	1:E:1022:GLY:CA	2.31	0.61
2:B:8:G:H1'	2:B:9:C:C6	2.36	0.61
4:E:1301:2ZE:H4	4:E:1301:2ZE:CAS	2.27	0.61
1:E:1113:GLN:HE21	1:E:1238:TRP:HE1	1.49	0.61
1:A:926:LYS:HE3	1:A:946:GLN:HG3	1.83	0.61
1:E:436:GLU:O	1:E:437:LYS:HG2	2.00	0.61

Continued on next page...

Continued from previous page...

Atom-1	Atom-2	Interatomic distance (Å)	Clash overlap (Å)
1:E:785:SER:CB	5:G:402:HOH:O	2.47	0.61
1:A:1216:ILE:O	1:A:1220:VAL:HG23	2.01	0.61
1:E:555:ASN:ND2	1:E:555:ASN:N	2.39	0.60
1:E:1047:LEU:HD12	1:E:1048:LEU:N	2.16	0.60
1:A:788:ASN:ND2	1:A:959:CYS:HB3	2.16	0.60
1:A:570:LEU:HD22	1:A:762:LEU:HB3	1.83	0.60
1:A:1122:ASN:HA	1:A:1125:ASN:ND2	2.13	0.60
1:E:444:PRO:O	1:E:445:ASP:HB2	2.00	0.60
1:A:1231:ASP:OD2	1:A:1234:LEU:HB2	2.01	0.60
1:A:898:ILE:HD13	1:A:898:ILE:N	2.17	0.60
1:E:410:MET:HG2	1:E:434:PRO:HB3	1.82	0.60
1:A:652:ASN:HB2	1:A:670:MET:HE1	1.83	0.60
1:E:365:VAL:HG22	1:E:376:CYS:HB2	1.81	0.60
1:A:911:LEU:HD11	1:A:956:MET:HG2	1.84	0.60
1:E:672:LYS:NZ	1:E:672:LYS:HB2	2.17	0.59
1:E:792:LEU:HD21	1:E:956:MET:CE	2.32	0.59
1:E:1230:ILE:HA	1:E:1234:LEU:HD23	1.84	0.59
1:E:597:ALA:O	1:E:601:VAL:HG23	2.03	0.59
1:E:849:VAL:HG13	1:E:1049:LEU:O	2.03	0.59
1:A:682:ARG:HD3	1:A:682:ARG:O	2.03	0.59
1:E:1010:THR:HG22	1:E:1021:LEU:CD2	2.29	0.59
1:A:652:ASN:HD22	1:A:670:MET:CE	2.04	0.58
1:E:398:LEU:O	1:E:399:ASN:HB2	2.02	0.58
1:E:1170:LYS:O	1:E:1173:ASP:HB2	2.03	0.58
1:A:1148:ASP:OD1	1:A:1151:SER:HB3	2.03	0.58
1:A:555:ASN:ND2	1:A:555:ASN:N	2.48	0.58
1:E:588:LYS:HD3	1:E:594:PHE:CE1	2.37	0.58
1:E:607:VAL:HB	1:E:609:VAL:HG12	1.85	0.58
1:E:760:ASN:O	1:E:763:PRO:HD2	2.04	0.58
1:E:1227:ILE:N	1:E:1227:ILE:HD12	2.18	0.58
1:E:963:SER:HA	1:E:968:TYR:CE1	2.38	0.58
1:A:935:ASN:ND2	1:A:937:ASP:OD1	2.34	0.58
1:E:438:ASN:HA	1:E:448:GLU:O	2.02	0.58
1:E:1109:VAL:HG13	1:E:1230:ILE:HD11	1.86	0.58
1:A:1048:LEU:HG	1:A:1050:LEU:HD21	1.85	0.58
1:A:369:SER:HB3	5:A:1424:HOH:O	2.03	0.58
1:E:1185:ASN:C	1:E:1185:ASN:HD22	2.08	0.58
1:E:1224:CYS:HA	1:E:1227:ILE:HD13	1.86	0.57
1:E:586:VAL:HB	1:E:742:LEU:HD21	1.86	0.57
1:E:644:LEU:HD23	1:E:681:GLU:HB3	1.86	0.57
2:F:201:G:H2'	2:F:202:C:C6	2.39	0.57

Continued on next page...

Continued from previous page...

Atom-1	Atom-2	Interatomic distance (Å)	Clash overlap (Å)
1:E:792:LEU:HD21	1:E:956:MET:HE2	1.86	0.57
1:E:555:ASN:HD22	1:E:555:ASN:N	1.80	0.57
1:A:1233:VAL:CG1	1:A:1243:PRO:HB3	2.22	0.57
1:E:727:ASN:ND2	1:E:727:ASN:N	2.35	0.57
1:A:774:ASN:HB2	5:A:1433:HOH:O	2.04	0.56
1:E:788:ASN:ND2	1:E:959:CYS:HB3	2.19	0.56
1:A:704:LYS:HD2	1:A:1136:ASN:ND2	2.19	0.56
1:A:1010:THR:HG22	1:A:1021:LEU:CD2	2.34	0.56
1:E:382:ASN:ND2	1:E:521:LEU:O	2.34	0.56
1:E:554:GLN:NE2	1:E:650:ARG:NH1	2.48	0.56
1:A:538:VAL:CG1	1:A:631:PRO:HA	2.36	0.56
1:A:410:MET:CE	1:A:451:GLU:HG2	2.35	0.56
1:E:1217:HIS:HB3	1:E:1218:PRO:HD3	1.85	0.56
1:E:900:GLU:HG3	5:E:1441:HOH:O	2.03	0.56
1:E:570:LEU:HD22	1:E:762:LEU:HB3	1.88	0.56
1:E:908:MET:HE2	1:E:916:ARG:NH1	1.99	0.56
4:E:1301:2ZE:CAW	4:E:1301:2ZE:H14	2.29	0.56
1:A:1047:LEU:HD12	1:A:1048:LEU:N	2.21	0.56
1:E:1154:HIS:CE1	1:E:1155:VAL:HG23	2.41	0.56
1:A:875:CYS:HB2	1:A:912:PRO:HD3	1.87	0.55
1:A:395:LYS:HB2	1:A:408:ILE:HD11	1.88	0.55
1:E:408:ILE:HG23	1:E:412:ASP:HB2	1.89	0.55
3:G:311:DG:H2''	3:G:312:DC:H5'	1.88	0.55
1:A:411:LYS:HE2	1:A:415:GLU:OE2	2.06	0.55
1:A:538:VAL:HG12	1:A:631:PRO:HA	1.87	0.55
1:A:970:LYS:HB3	1:A:971:PRO:HD3	1.89	0.55
1:E:1212:LEU:HD23	1:E:1216:ILE:HD12	1.87	0.55
1:E:1095:VAL:O	1:E:1099:ILE:HG13	2.07	0.55
1:E:1058:LEU:HB3	1:E:1070:THR:OG1	2.07	0.55
1:E:908:MET:HE3	1:E:913:ARG:HG3	1.89	0.55
1:A:1231:ASP:O	1:A:1235:ILE:HG13	2.06	0.55
1:E:500:GLU:OE2	1:E:502:LYS:HE3	2.06	0.55
1:E:1002:ASP:O	1:E:1004:ASP:N	2.35	0.55
1:A:708:LEU:O	1:A:712:VAL:HG23	2.07	0.55
1:E:1149:LYS:HE3	1:E:1159:LEU:HD12	1.89	0.54
1:A:652:ASN:ND2	1:A:670:MET:HE3	2.03	0.54
1:E:935:ASN:HD22	1:E:935:ASN:C	2.09	0.54
1:E:1119:ILE:O	1:E:1123:VAL:HG23	2.07	0.54
1:A:394:MET:HG2	1:A:403:GLU:OE1	2.06	0.54
1:E:652:ASN:HD22	1:E:670:MET:HE3	1.72	0.54
1:A:1227:ILE:HD12	1:A:1227:ILE:N	2.23	0.54

Continued on next page...

Continued from previous page...

Atom-1	Atom-2	Interatomic distance (Å)	Clash overlap (Å)
1:E:346:LEU:HB3	1:E:689:MET:HE3	1.89	0.54
1:E:432:SER:HA	1:E:454:GLU:O	2.07	0.54
1:E:669:ASN:ND2	1:E:669:ASN:N	2.55	0.54
1:A:1026:LYS:HG2	1:A:1027:SER:N	2.22	0.54
1:E:1113:GLN:O	1:E:1117:ILE:HG13	2.08	0.54
1:A:1082:ARG:HG2	1:A:1136:ASN:O	2.08	0.54
1:E:903:ASP:OD2	1:E:905:SER:HB3	2.08	0.54
1:A:1184:SER:O	1:A:1185:ASN:ND2	2.40	0.53
1:E:627:HIS:HB2	1:E:661:LYS:HD3	1.90	0.53
1:A:1095:VAL:HG13	1:A:1112:ILE:HD13	1.90	0.53
1:A:547:MET:HE1	1:A:589:PRO:HG3	1.90	0.53
1:A:1211:TYR:O	1:A:1215:GLN:HB2	2.09	0.53
1:E:911:LEU:HB3	1:E:912:PRO:HD3	1.91	0.53
1:E:788:ASN:CB	1:E:959:CYS:SG	2.97	0.53
2:B:8:G:HO2'	2:B:9:C:H5	1.54	0.53
1:E:564:VAL:HG21	1:E:629:ILE:HD13	1.91	0.53
1:A:442:GLU:HB2	5:A:1463:HOH:O	2.07	0.53
1:A:437:LYS:HB3	1:A:802:ILE:HG12	1.91	0.53
1:A:1002:ASP:O	1:A:1004:ASP:N	2.39	0.53
1:E:1084:TRP:O	1:E:1089:LYS:HE2	2.09	0.53
1:E:353:TYR:HD2	1:E:354:ASN:ND2	2.07	0.53
1:A:873:ASN:HD21	1:A:878:THR:HG21	1.74	0.53
3:G:315:DT:C2'	3:G:316:DC:H5''	2.21	0.53
1:A:1109:VAL:HG13	1:A:1230:ILE:HD11	1.91	0.52
1:A:1064:SER:O	1:A:1067:ASN:HB2	2.08	0.52
1:E:854:LYS:HG3	1:E:1011:ASN:ND2	2.18	0.52
1:E:728:ILE:HG22	1:E:729:GLN:N	2.23	0.52
1:E:476:VAL:HG12	5:E:1436:HOH:O	2.08	0.52
1:E:1241:LEU:O	1:E:1243:PRO:HD3	2.08	0.52
1:E:1026:LYS:HG3	1:E:1030:ASN:HD21	1.73	0.52
1:E:668:SER:C	1:E:669:ASN:HD22	2.13	0.52
1:E:365:VAL:HA	5:E:1404:HOH:O	2.08	0.52
1:A:935:ASN:HD22	1:A:936:PRO:HD2	1.75	0.52
1:A:432:SER:HA	1:A:454:GLU:O	2.09	0.52
1:A:1084:TRP:O	1:A:1089:LYS:HE2	2.10	0.52
1:A:537:LEU:HD12	1:A:633:ILE:HD11	1.92	0.52
1:A:855:PHE:HD2	1:A:1018:VAL:HG21	1.75	0.52
1:A:428:MET:SD	1:A:428:MET:N	2.83	0.52
1:E:1138:ALA:HA	1:E:1174:THR:HA	1.92	0.52
1:A:1241:LEU:O	1:A:1243:PRO:HD3	2.10	0.52
1:A:913:ARG:HD2	5:A:1442:HOH:O	2.09	0.52

Continued on next page...

Continued from previous page...

Atom-1	Atom-2	Interatomic distance (Å)	Clash overlap (Å)
1:A:1111:ASN:N	1:A:1111:ASN:ND2	2.57	0.51
1:E:346:LEU:HB3	1:E:689:MET:CE	2.40	0.51
1:E:1020:LYS:O	1:E:1024:LYS:HB2	2.10	0.51
1:E:1198:LEU:HG	1:E:1199:GLN:N	2.25	0.51
1:A:529:ILE:HD12	1:E:342:HIS:CE1	2.45	0.51
1:A:1150:LYS:HD2	1:A:1150:LYS:N	2.15	0.51
1:A:727:ASN:O	1:A:731:MET:HG3	2.10	0.51
1:A:1116:LEU:CD2	1:A:1235:ILE:HG23	2.40	0.51
1:E:340:VAL:HG21	1:E:500:GLU:CG	2.41	0.51
1:E:652:ASN:HD22	1:E:670:MET:HE2	1.74	0.51
1:A:728:ILE:HG22	1:A:729:GLN:N	2.24	0.51
1:A:1196:GLU:HG3	1:A:1197:GLN:N	2.26	0.51
1:A:854:LYS:HG3	1:A:1011:ASN:HD22	1.75	0.51
1:E:1219:VAL:O	1:E:1223:ILE:HG13	2.10	0.51
1:A:875:CYS:SG	1:A:876:PHE:N	2.84	0.51
1:E:618:LEU:HD23	1:E:618:LEU:C	2.30	0.51
1:E:1109:VAL:HG13	1:E:1230:ILE:HD13	1.93	0.51
1:E:410:MET:HE2	1:E:451:GLU:HG2	1.93	0.51
1:E:762:LEU:HB2	1:E:763:PRO:HD3	1.93	0.50
1:E:704:LYS:HA	1:E:1082:ARG:HE	1.77	0.50
1:E:399:ASN:O	1:E:400:THR:C	2.50	0.50
1:E:794:HIS:O	1:E:798:GLU:HG3	2.10	0.50
1:E:370:ALA:O	1:E:372:THR:HG22	2.11	0.50
1:A:652:ASN:HB2	1:A:670:MET:CE	2.41	0.50
1:A:588:LYS:O	1:A:589:PRO:O	2.29	0.50
1:A:458:SER:HB3	1:A:461:MET:CE	2.42	0.50
1:A:1181:GLN:NE2	1:A:1181:GLN:HA	2.26	0.50
1:A:1113:GLN:O	1:A:1117:ILE:HG13	2.12	0.50
1:A:908:MET:CE	1:A:913:ARG:HG3	2.41	0.50
1:A:1181:GLN:HA	1:A:1181:GLN:HE21	1.77	0.50
1:E:410:MET:CE	1:E:451:GLU:HG2	2.41	0.50
1:E:689:MET:HE2	1:E:776:MET:HB3	1.93	0.50
2:F:202:C:H2'	2:F:203:C:C6	2.47	0.50
1:A:1069:VAL:HG12	1:A:1070:THR:H	1.77	0.50
1:A:1210:TYR:CD1	1:A:1214:GLN:HG3	2.47	0.50
1:A:1109:VAL:HG13	1:A:1230:ILE:HD13	1.93	0.50
1:A:563:LEU:HD22	1:A:750:LYS:HA	1.94	0.50
1:A:1219:VAL:O	1:A:1223:ILE:HG13	2.12	0.50
4:A:1301:2ZE:H18	3:C:111:DG:C2	2.47	0.49
1:E:672:LYS:CG	1:E:673:LEU:H	2.23	0.49
1:E:1095:VAL:HG13	1:E:1112:ILE:HD13	1.94	0.49

Continued on next page...

Continued from previous page...

Atom-1	Atom-2	Interatomic distance (Å)	Clash overlap (Å)
1:E:1096:ILE:HD11	1:E:1223:ILE:HG23	1.93	0.49
1:A:1030:ASN:OD1	1:A:1038:ILE:HG22	2.12	0.49
1:A:986:HIS:CD2	1:A:986:HIS:O	2.65	0.49
1:A:619:LEU:HD13	1:A:651:ILE:HA	1.94	0.49
1:E:652:ASN:ND2	1:E:670:MET:HE2	2.26	0.49
1:E:704:LYS:O	1:E:1174:THR:HG21	2.11	0.49
1:E:340:VAL:HG22	1:E:341:PHE:N	2.27	0.49
1:A:854:LYS:HG3	1:A:1011:ASN:HA	1.94	0.49
1:E:672:LYS:HZ3	1:E:672:LYS:HB2	1.76	0.49
1:E:1112:ILE:O	1:E:1116:LEU:HD13	2.12	0.49
1:A:1056:ALA:HB2	1:A:1077:LEU:HD11	1.95	0.49
1:E:870:GLN:HE22	1:E:919:VAL:HG21	1.76	0.49
1:E:908:MET:O	1:E:913:ARG:NH1	2.44	0.49
1:A:669:ASN:HD22	1:A:669:ASN:N	2.10	0.49
1:E:1074:LEU:O	1:E:1075:LYS:HG2	2.13	0.49
1:A:978:TYR:C	1:A:980:GLY:N	2.66	0.49
1:A:788:ASN:ND2	1:A:959:CYS:CB	2.75	0.49
1:E:837:ALA:HB1	3:G:312:DC:H3'	1.95	0.49
1:E:1030:ASN:OD1	1:E:1038:ILE:HG22	2.13	0.49
1:A:1115:ARG:O	1:A:1119:ILE:HG12	2.13	0.49
1:E:602:ILE:HG21	1:E:609:VAL:HG13	1.94	0.49
1:E:432:SER:HB2	1:E:453:LEU:HD11	1.93	0.49
1:A:644:LEU:HD23	1:A:681:GLU:HB3	1.94	0.49
1:A:1116:LEU:HD22	1:A:1238:TRP:HE3	1.76	0.49
1:E:1105:ARG:O	1:E:1109:VAL:HG23	2.13	0.49
1:A:865:TYR:HB2	1:A:866:PRO:HD3	1.95	0.49
3:G:320:DG:H2''	3:G:321:DC:OP2	2.11	0.49
1:E:1148:ASP:OD1	1:E:1151:SER:HB3	2.12	0.49
1:A:834:ARG:NH2	3:C:112:DC:C5	2.81	0.49
1:A:956:MET:CA	1:A:956:MET:HE2	2.43	0.48
1:A:548:GLN:H	1:A:725:MET:HE2	1.78	0.48
1:E:385:ARG:HD2	1:E:457:TYR:CZ	2.47	0.48
1:A:875:CYS:HB2	1:A:912:PRO:CD	2.43	0.48
1:A:598:PHE:CZ	1:A:738:LEU:HD13	2.48	0.48
1:E:908:MET:HE3	1:E:913:ARG:HA	1.94	0.48
1:A:807:GLN:OE1	1:A:807:GLN:HA	2.13	0.48
1:E:963:SER:HA	1:E:968:TYR:CD1	2.48	0.48
2:F:201:G:H2'	2:F:202:C:H6	1.78	0.48
1:E:1053:LYS:O	1:E:1054:LYS:HG3	2.14	0.48
1:E:1021:LEU:O	1:E:1025:VAL:HG23	2.13	0.48
1:E:672:LYS:HG3	1:E:673:LEU:N	2.22	0.48

Continued on next page...

Continued from previous page...

Atom-1	Atom-2	Interatomic distance (Å)	Clash overlap (Å)
1:E:1079:ILE:O	1:E:1089:LYS:HD2	2.14	0.48
2:B:5:G:O2'	2:B:6:G:H5'	2.14	0.48
1:A:760:ASN:O	1:A:763:PRO:HD2	2.13	0.48
1:A:935:ASN:HD22	1:A:936:PRO:CD	2.26	0.48
1:A:541:ALA:HA	1:A:635:VAL:HG13	1.95	0.48
1:A:909:GLY:C	1:A:912:PRO:HD2	2.33	0.48
1:A:854:LYS:O	1:A:856:ILE:HD12	2.13	0.48
1:E:846:ASP:OD1	1:E:847:PRO:HD2	2.14	0.48
1:E:1010:THR:CG2	1:E:1021:LEU:HD23	2.37	0.48
1:E:385:ARG:HD2	1:E:457:TYR:CE2	2.49	0.48
1:E:858:LEU:HD12	1:E:859:LEU:N	2.28	0.47
1:A:727:ASN:ND2	1:A:727:ASN:N	2.47	0.47
1:A:785:SER:O	1:A:788:ASN:HB3	2.14	0.47
1:E:523:PRO:C	1:E:525:LEU:H	2.18	0.47
1:E:1162:ASN:OD1	1:E:1169:VAL:N	2.44	0.47
1:A:586:VAL:HG22	1:A:587:SER:N	2.29	0.47
1:E:728:ILE:HA	1:E:731:MET:SD	2.54	0.47
1:A:1211:TYR:O	1:A:1216:ILE:HG13	2.14	0.47
1:A:922:ARG:HE	1:A:946:GLN:HG2	1.79	0.47
1:A:873:ASN:ND2	1:A:878:THR:HG21	2.28	0.47
1:E:931:GLN:HG2	1:E:932:GLN:N	2.29	0.47
1:A:550:ALA:O	1:A:551:LYS:O	2.32	0.47
1:E:429:LYS:HA	5:E:1428:HOH:O	2.13	0.47
1:A:548:GLN:H	1:A:725:MET:CE	2.28	0.47
1:E:548:GLN:HE21	1:E:548:GLN:HB2	1.45	0.47
1:A:423:THR:OG1	1:A:424:LYS:N	2.46	0.47
1:A:491:ARG:NH2	1:A:527:ASN:OD1	2.48	0.47
1:A:664:ARG:HB2	1:A:687:GLY:HA3	1.95	0.47
1:A:1079:ILE:CD1	1:A:1096:ILE:HG13	2.45	0.47
1:E:1128:VAL:HB	1:E:1133:PHE:CZ	2.50	0.47
1:A:849:VAL:HG13	1:A:1049:LEU:O	2.14	0.47
1:E:935:ASN:O	1:E:938:LEU:HB2	2.13	0.47
1:A:1105:ARG:NH2	1:A:1108:ILE:CD1	2.77	0.47
1:A:547:MET:HE2	1:A:589:PRO:HB3	1.97	0.47
1:E:1227:ILE:CD1	1:E:1227:ILE:N	2.77	0.47
1:A:1078:ASP:HB3	1:A:1084:TRP:CD1	2.50	0.47
1:A:903:ASP:OD2	1:A:905:SER:HB3	2.14	0.47
1:E:728:ILE:O	1:E:731:MET:HB2	2.15	0.47
1:E:394:MET:HE2	1:E:405:GLY:HA2	1.94	0.47
1:E:1215:GLN:C	1:E:1218:PRO:HD2	2.35	0.47
1:A:1112:ILE:HG22	1:A:1116:LEU:HD13	1.97	0.47

Continued on next page...

Continued from previous page...

Atom-1	Atom-2	Interatomic distance (Å)	Clash overlap (Å)
1:E:529:ILE:HD11	1:E:532:VAL:CG2	2.43	0.47
1:A:927:GLN:NE2	1:A:930:LYS:HD2	2.30	0.47
1:A:1134:GLU:HG2	1:A:1195:PRO:HG3	1.96	0.47
3:G:315:DT:H2''	3:G:316:DC:H5'	1.90	0.46
1:E:1216:ILE:O	1:E:1220:VAL:HG23	2.15	0.46
1:E:404:THR:OG1	1:E:405:GLY:N	2.49	0.46
1:A:537:LEU:N	1:A:537:LEU:HD23	2.29	0.46
1:E:873:ASN:ND2	1:E:878:THR:HG21	2.30	0.46
1:A:881:ARG:HG2	1:A:881:ARG:HH11	1.80	0.46
1:E:353:TYR:HD2	1:E:354:ASN:HD21	1.63	0.46
1:A:911:LEU:HB3	1:A:912:PRO:HD3	1.96	0.46
1:A:618:LEU:HD23	1:A:618:LEU:C	2.35	0.46
1:E:506:LEU:C	1:E:507:LEU:HD12	2.35	0.46
1:A:395:LYS:HD2	5:A:1453:HOH:O	2.14	0.46
1:E:563:LEU:HD23	1:E:579:PHE:CD1	2.50	0.46
1:E:990:MET:HG2	1:E:994:MET:CE	2.45	0.46
1:A:986:HIS:HD2	1:A:986:HIS:O	1.99	0.46
2:B:2:C:H2'	2:B:3:C:C6	2.51	0.46
1:E:908:MET:CE	1:E:913:ARG:HA	2.46	0.46
1:A:1152:LEU:HA	1:A:1153:PRO:HD2	1.81	0.46
1:A:433:LYS:HE3	1:A:435:VAL:CG1	2.45	0.46
1:E:1148:ASP:O	1:E:1148:ASP:CG	2.54	0.46
1:A:410:MET:HG2	1:A:434:PRO:HB3	1.97	0.46
1:A:425:TYR:C	1:A:426:LYS:HG2	2.36	0.46
1:E:875:CYS:SG	1:E:876:PHE:N	2.89	0.46
1:A:458:SER:HB3	1:A:461:MET:HE3	1.97	0.46
1:A:512:SER:HB2	1:A:664:ARG:O	2.15	0.46
1:E:857:LEU:HD22	1:E:859:LEU:HD21	1.98	0.46
1:A:921:ARG:CD	5:A:1479:HOH:O	2.49	0.46
1:A:1050:LEU:N	1:A:1050:LEU:HD23	2.31	0.46
1:A:928:LEU:O	1:A:931:GLN:HB2	2.16	0.46
1:E:531:ASP:N	1:E:531:ASP:OD1	2.49	0.46
1:E:652:ASN:HB2	1:E:670:MET:CE	2.46	0.46
1:A:1119:ILE:O	1:A:1123:VAL:HG23	2.15	0.46
1:A:932:GLN:HA	1:A:932:GLN:NE2	2.31	0.46
1:A:500:GLU:HG2	5:A:1454:HOH:O	2.16	0.46
1:E:542:PHE:HE2	1:E:544:MET:HE2	1.81	0.46
1:E:562:ALA:C	1:E:563:LEU:HD12	2.36	0.45
1:E:940:LEU:O	1:E:944:ILE:HD12	2.16	0.45
1:E:589:PRO:HG2	1:E:592:CYS:SG	2.56	0.45
1:A:602:ILE:HD13	1:A:609:VAL:HG13	1.97	0.45

Continued on next page...

Continued from previous page...

Atom-1	Atom-2	Interatomic distance (Å)	Clash overlap (Å)
1:E:938:LEU:HA	1:E:938:LEU:HD12	1.80	0.45
1:A:1055:TYR:CZ	1:A:1075:LYS:HG3	2.50	0.45
1:A:1010:THR:C	1:A:1012:SER:H	2.18	0.45
1:A:705:SER:HA	1:A:1174:THR:HG21	1.98	0.45
1:E:783:GLY:CA	3:G:310:DG:OP2	2.64	0.45
1:A:682:ARG:C	1:A:682:ARG:HD3	2.36	0.45
1:A:882:VAL:HG22	1:A:882:VAL:O	2.16	0.45
1:E:1112:ILE:HG22	1:E:1116:LEU:HD13	1.97	0.45
1:E:397:ASP:HB2	1:E:404:THR:HG22	1.99	0.45
1:E:559:ALA:O	1:E:560:MET:HG3	2.17	0.45
1:A:730:ASN:HD22	1:A:730:ASN:N	2.13	0.45
1:E:340:VAL:HG21	1:E:500:GLU:HG3	1.98	0.45
1:A:958:GLY:O	3:C:110:DG:H2"	2.17	0.45
1:A:1181:GLN:HB2	1:A:1205:THR:CG2	2.46	0.45
1:E:985:MET:O	1:E:989:GLU:HG3	2.17	0.45
4:A:1301:2ZE:CAW	4:A:1301:2ZE:CAS	2.91	0.45
1:E:408:ILE:CD1	1:E:472:THR:HA	2.46	0.45
1:E:858:LEU:C	1:E:858:LEU:HD12	2.37	0.45
1:E:859:LEU:CD2	1:E:1040:ILE:HD13	2.46	0.45
1:E:784:ARG:HG2	1:E:784:ARG:HH11	1.82	0.45
1:E:605:LYS:HB2	1:E:607:VAL:HG23	1.99	0.45
1:E:788:ASN:ND2	1:E:959:CYS:CB	2.79	0.45
1:E:601:VAL:O	1:E:605:LYS:HG2	2.17	0.45
1:E:583:PHE:CD2	1:E:625:LYS:HE2	2.51	0.45
1:A:896:GLU:O	1:A:897:GLN:HB2	2.16	0.45
1:E:861:PHE:HA	1:E:1038:ILE:HA	1.98	0.44
1:A:1000:TYR:CG	1:A:1001:GLY:N	2.85	0.44
1:A:1048:LEU:HG	1:A:1050:LEU:CD2	2.47	0.44
1:E:727:ASN:O	1:E:731:MET:HG3	2.17	0.44
1:E:1128:VAL:HB	1:E:1133:PHE:HZ	1.81	0.44
1:A:358:VAL:HG22	1:A:381:LYS:HG2	1.98	0.44
1:E:1231:ASP:OD2	1:E:1233:VAL:HB	2.17	0.44
1:E:529:ILE:C	1:E:529:ILE:HD12	2.38	0.44
1:E:596:TYR:O	1:E:597:ALA:HB3	2.18	0.44
1:A:935:ASN:O	1:A:938:LEU:HB2	2.17	0.44
1:E:368:GLU:HA	1:E:368:GLU:OE2	2.16	0.44
1:A:1215:GLN:C	1:A:1218:PRO:HD2	2.38	0.44
1:A:718:THR:HG22	1:A:719:GLU:N	2.32	0.44
1:E:1142:ASP:O	1:E:1144:GLN:N	2.51	0.44
1:A:806:LYS:HB3	1:A:806:LYS:HE2	1.80	0.44
1:E:852:TYR:CE1	1:E:999:ILE:HG21	2.52	0.44

Continued on next page...

Continued from previous page...

Atom-1	Atom-2	Interatomic distance (Å)	Clash overlap (Å)
1:E:901:LEU:CD2	1:E:975:LEU:HD11	2.48	0.44
1:E:705:SER:HB2	1:E:707:HIS:CD2	2.52	0.44
1:A:1139:LEU:N	1:A:1139:LEU:HD12	2.32	0.44
1:E:636:GLY:HA2	1:E:752:ILE:HG21	2.00	0.44
1:E:963:SER:HA	1:E:968:TYR:CZ	2.53	0.44
1:A:1196:GLU:CG	1:A:1197:GLN:N	2.81	0.44
1:E:937:ASP:HB3	5:E:1462:HOH:O	2.18	0.44
1:E:925:VAL:HG21	1:E:945:ARG:HG2	2.00	0.44
1:A:925:VAL:HG13	1:A:942:TYR:HB3	2.00	0.44
1:E:1056:ALA:HB2	1:E:1077:LEU:HD11	2.00	0.44
1:E:1149:LYS:HG2	1:E:1150:LYS:N	2.32	0.43
1:E:859:LEU:HD22	1:E:1040:ILE:HD13	2.00	0.43
1:A:1069:VAL:HG12	1:A:1070:THR:N	2.31	0.43
1:A:1139:LEU:HD23	1:A:1143:PRO:HD3	1.99	0.43
1:E:1210:TYR:CD1	1:E:1214:GLN:HG3	2.53	0.43
1:E:425:TYR:O	1:E:426:LYS:HB2	2.18	0.43
1:E:875:CYS:HB2	1:E:912:PRO:CD	2.44	0.43
1:A:1149:LYS:HE3	1:A:1159:LEU:HD12	1.99	0.43
1:E:1184:SER:O	1:E:1185:ASN:ND2	2.52	0.43
1:A:1010:THR:CG2	1:A:1021:LEU:HD23	2.44	0.43
1:A:916:ARG:O	1:A:920:GLU:HG2	2.18	0.43
1:E:672:LYS:NZ	1:E:672:LYS:CB	2.81	0.43
1:E:1215:GLN:O	1:E:1218:PRO:HD2	2.19	0.43
2:B:3:C:H2'	2:B:4:U:C6	2.54	0.43
1:A:1182:ASP:OD1	1:A:1191:ARG:HG2	2.18	0.43
1:E:679:PHE:CD2	1:E:680:GLY:N	2.86	0.43
1:A:688:ARG:HH11	1:A:688:ARG:HG2	1.83	0.43
1:E:645:GLU:O	1:E:649:GLN:HG3	2.18	0.43
1:E:1018:VAL:O	1:E:1021:LEU:HB3	2.19	0.43
1:E:412:ASP:HB3	1:E:472:THR:HG21	2.01	0.43
1:A:762:LEU:HB2	1:A:763:PRO:HD3	2.01	0.43
1:E:925:VAL:CG1	1:E:942:TYR:HB3	2.49	0.43
1:E:578:PRO:HB2	1:E:753:LEU:HD21	2.01	0.43
1:E:992:GLN:O	1:E:995:ASN:N	2.51	0.43
1:A:395:LYS:CB	1:A:408:ILE:HD11	2.48	0.43
1:A:429:LYS:HD2	1:A:429:LYS:N	2.33	0.43
1:A:531:ASP:OD1	1:A:531:ASP:N	2.45	0.43
3:G:316:DC:H2''	3:G:317:DC:H5'	1.99	0.43
1:A:1103:GLN:HB3	1:A:1107:THR:HB	1.99	0.43
1:A:570:LEU:CD2	1:A:762:LEU:HB3	2.46	0.43
1:A:1053:LYS:O	1:A:1054:LYS:HG3	2.19	0.43

Continued on next page...

Continued from previous page...

Atom-1	Atom-2	Interatomic distance (Å)	Clash overlap (Å)
1:A:625:LYS:O	1:A:629:ILE:HG13	2.18	0.43
1:A:901:LEU:HD23	1:A:975:LEU:HD21	2.01	0.43
4:A:1301:2ZE:H28	4:A:1301:2ZE:H16	1.80	0.43
1:E:392:ARG:HB2	1:E:408:ILE:HD12	2.00	0.43
1:A:1107:THR:O	1:A:1111:ASN:ND2	2.51	0.43
1:E:1139:LEU:HD12	1:E:1139:LEU:N	2.34	0.43
1:A:1234:LEU:CG	1:A:1238:TRP:CZ2	2.99	0.43
1:E:1026:LYS:HG2	1:E:1027:SER:N	2.34	0.43
1:E:537:LEU:HD11	1:E:570:LEU:HD11	2.00	0.43
2:B:1:G:H2'	2:B:2:C:C6	2.53	0.43
1:A:915:ILE:O	1:A:919:VAL:HG23	2.19	0.43
1:A:1121:GLU:O	1:A:1125:ASN:ND2	2.52	0.42
1:E:1046:SER:OG	1:E:1058:LEU:HD12	2.19	0.42
1:A:444:PRO:O	1:A:445:ASP:HB2	2.18	0.42
1:E:857:LEU:HD11	1:E:1022:GLY:N	2.34	0.42
1:A:428:MET:C	1:A:429:LYS:HD2	2.39	0.42
1:E:1201:GLN:HG2	1:E:1203:ASN:OD1	2.19	0.42
1:E:898:ILE:HA	1:E:899:PRO:HD2	1.90	0.42
3:G:315:DT:C2'	3:G:316:DC:C5'	2.84	0.42
1:E:1222:ARG:NH1	3:G:317:DC:OP1	2.49	0.42
1:E:922:ARG:CG	1:E:946:GLN:NE2	2.71	0.42
1:A:908:MET:HE1	1:A:913:ARG:HG3	2.00	0.42
1:E:699:GLU:HG3	1:E:784:ARG:HH21	1.85	0.42
1:A:1148:ASP:O	1:A:1148:ASP:OD1	2.36	0.42
1:A:1139:LEU:HD11	1:A:1175:VAL:CG2	2.50	0.42
1:A:621:PHE:O	1:A:625:LYS:HG2	2.19	0.42
1:E:503:SER:N	1:E:504:PRO:CD	2.82	0.42
1:A:1197:GLN:O	1:A:1204:LEU:HD12	2.20	0.42
1:A:713:GLN:O	1:A:717:LYS:HA	2.20	0.42
1:A:922:ARG:O	1:A:926:LYS:HG3	2.20	0.42
1:A:726:GLU:HG3	1:A:726:GLU:H	1.62	0.42
1:E:721:VAL:HG12	1:E:722:VAL:N	2.34	0.42
1:E:392:ARG:HD3	1:E:396:ILE:HD13	2.02	0.42
1:E:545:LYS:HG3	1:E:741:LEU:HD11	2.01	0.42
1:E:807:GLN:HG2	1:E:808:ILE:N	2.34	0.42
1:A:635:VAL:HA	1:A:691:CYS:O	2.20	0.42
1:A:1158:ALA:HB2	1:A:1175:VAL:HG21	2.01	0.42
4:E:1301:2ZE:H22	4:E:1301:2ZE:H30	1.82	0.42
1:E:784:ARG:HG3	3:G:310:DG:C5	2.55	0.42
1:A:678:GLY:O	1:A:682:ARG:HB2	2.19	0.42
1:A:558:ILE:C	1:A:558:ILE:HD12	2.40	0.42

Continued on next page...

Continued from previous page...

Atom-1	Atom-2	Interatomic distance (Å)	Clash overlap (Å)
1:E:593:ILE:HG13	1:E:593:ILE:O	2.18	0.42
1:E:439:TYR:CZ	1:E:441:PHE:HB2	2.54	0.42
1:E:908:MET:CE	1:E:916:ARG:NH1	2.68	0.41
1:A:1147:PRO:HG2	1:A:1148:ASP:H	1.83	0.41
1:A:1011:ASN:HD22	1:A:1011:ASN:HA	1.68	0.41
1:E:522:LYS:O	1:E:525:LEU:HB2	2.20	0.41
1:A:523:PRO:C	1:A:525:LEU:H	2.24	0.41
1:A:1209:GLN:HE22	1:A:1241:LEU:HD22	1.84	0.41
3:G:311:DG:H2'	3:G:312:DC:C6	2.54	0.41
1:A:605:LYS:HE2	1:A:739:LEU:HD23	2.01	0.41
1:E:1152:LEU:HA	1:E:1153:PRO:HD2	1.79	0.41
1:A:593:ILE:HG13	1:A:593:ILE:O	2.19	0.41
4:A:1301:2ZE:H22	4:A:1301:2ZE:H30	1.72	0.41
1:E:730:ASN:H	1:E:730:ASN:HD22	1.55	0.41
1:A:922:ARG:NH2	1:A:950:LYS:HD2	2.35	0.41
1:E:788:ASN:HB2	1:E:959:CYS:SG	2.60	0.41
1:A:1058:LEU:HB3	1:A:1070:THR:OG1	2.21	0.41
1:A:978:TYR:C	1:A:980:GLY:H	2.22	0.41
1:A:1139:LEU:HD11	1:A:1175:VAL:HG23	2.02	0.41
1:A:1010:THR:C	1:A:1012:SER:N	2.73	0.41
1:E:667:ARG:HH22	1:E:683:ASN:HB3	1.84	0.41
1:E:1082:ARG:HG3	1:E:1136:ASN:HB2	2.02	0.41
1:A:1092:GLY:O	1:A:1096:ILE:HG12	2.20	0.41
1:A:627:HIS:HB2	1:A:661:LYS:HD3	2.03	0.41
1:E:988:LYS:HG3	1:E:998:VAL:HG11	2.01	0.41
1:E:1148:ASP:O	1:E:1149:LYS:C	2.59	0.41
1:A:908:MET:HB3	1:A:913:ARG:HD3	2.03	0.41
1:E:865:TYR:CB	1:E:866:PRO:HD3	2.49	0.41
1:E:873:ASN:HD21	1:E:878:THR:HG21	1.85	0.41
1:A:1054:LYS:HA	1:A:1075:LYS:O	2.21	0.41
1:A:1170:LYS:HG2	1:A:1173:ASP:OD2	2.21	0.41
1:E:1006:ILE:HA	1:E:1006:ILE:HD13	1.81	0.41
1:E:791:LEU:HD12	1:E:791:LEU:O	2.20	0.41
3:C:110:DG:N3	3:C:110:DG:H3'	2.36	0.41
1:A:1082:ARG:HG3	1:A:1136:ASN:HB2	2.02	0.41
1:A:721:VAL:HG12	1:A:722:VAL:N	2.36	0.41
4:A:1301:2ZE:H21	4:A:1301:2ZE:H13	1.87	0.41
1:E:1103:GLN:HB3	1:E:1107:THR:HB	2.03	0.41
1:A:596:TYR:O	1:A:597:ALA:HB3	2.21	0.41
4:E:1301:2ZE:CAW	4:E:1301:2ZE:CAS	2.94	0.41
3:C:118:DA:H2''	3:C:119:DG:C5'	2.43	0.41

Continued on next page...

Continued from previous page...

Atom-1	Atom-2	Interatomic distance (Å)	Clash overlap (Å)
1:E:340:VAL:HG23	1:E:501:VAL:C	2.41	0.41
1:A:667:ARG:HH22	1:A:683:ASN:HB3	1.86	0.41
1:A:588:LYS:HA	1:A:732:TYR:HE2	1.85	0.41
1:E:1053:LYS:HD3	2:F:210:G:H1'	2.03	0.41
1:A:1152:LEU:HD13	2:B:6:G:H4'	2.03	0.41
2:B:2:C:O2'	2:B:3:C:H5'	2.21	0.41
1:A:705:SER:HB3	1:A:1174:THR:OG1	2.20	0.41
1:A:1138:ALA:HA	1:A:1174:THR:HA	2.02	0.41
1:E:586:VAL:CB	1:E:742:LEU:HD21	2.51	0.41
1:A:849:VAL:HG12	1:A:850:GLY:N	2.36	0.41
1:A:1169:VAL:HG13	1:A:1173:ASP:HB2	2.03	0.41
1:A:649:GLN:O	1:A:653:VAL:HG23	2.21	0.41
4:E:1301:2ZE:H21	4:E:1301:2ZE:H13	1.90	0.40
1:A:922:ARG:NH2	1:A:946:GLN:OE1	2.51	0.40
1:E:1142:ASP:HB2	1:E:1145:ASP:OD2	2.21	0.40
1:A:549:ASN:OD1	1:A:552:ASN:O	2.39	0.40
1:E:970:LYS:N	1:E:971:PRO:CD	2.85	0.40
1:E:433:LYS:HB3	1:E:433:LYS:HE2	1.92	0.40
1:E:1050:LEU:HD13	1:E:1222:ARG:O	2.21	0.40
1:E:854:LYS:HB3	1:E:1012:SER:O	2.21	0.40
1:E:678:GLY:HA2	1:E:681:GLU:OE1	2.22	0.40
1:E:1082:ARG:CG	1:E:1136:ASN:HB2	2.51	0.40
2:F:210:G:H2'	2:F:211:DC:C6	2.56	0.40
1:E:1179:ILE:HD12	1:E:1188:ALA:O	2.21	0.40
1:E:1237:THR:HG23	1:E:1243:PRO:HG3	2.02	0.40
1:A:588:LYS:HA	1:A:732:TYR:CE2	2.56	0.40
1:E:705:SER:OG	1:E:710:GLU:HG2	2.21	0.40
1:E:633:ILE:HD13	1:E:762:LEU:HD22	2.04	0.40
1:A:1149:LYS:HE3	1:A:1159:LEU:CD1	2.51	0.40
1:E:353:TYR:C	1:E:354:ASN:HD22	2.25	0.40
1:E:1116:LEU:HD22	1:E:1238:TRP:HE3	1.87	0.40
1:A:669:ASN:ND2	1:A:669:ASN:N	2.69	0.40
1:A:1139:LEU:CD2	1:A:1143:PRO:HD3	2.51	0.40
1:A:521:LEU:HD23	1:A:521:LEU:HA	1.94	0.40
1:E:447:PRO:HB2	1:E:449:LYS:O	2.21	0.40
1:E:345:TRP:HA	1:E:363:GLY:HA3	2.04	0.40

There are no symmetry-related clashes.

5.3 Torsion angles

5.3.1 Protein backbone

In the following table, the Percentiles column shows the percent Ramachandran outliers of the chain as a percentile score with respect to all X-ray entries followed by that with respect to entries of similar resolution.

The Analysed column shows the number of residues for which the backbone conformation was analysed, and the total number of residues.

Mol	Chain	Analysed	Favoured	Allowed	Outliers	Percentiles	
1	A	857/922 (93%)	785 (92%)	56 (6%)	16 (2%)	10	16
1	E	857/922 (93%)	783 (91%)	62 (7%)	12 (1%)	14	23
All	All	1714/1844 (93%)	1568 (92%)	118 (7%)	28 (2%)	12	20

All (28) Ramachandran outliers are listed below:

Mol	Chain	Res	Type
1	A	551	LYS
1	A	553	HIS
1	A	589	PRO
1	A	1101	SER
1	A	1149	LYS
1	E	551	LYS
1	E	1101	SER
1	E	1149	LYS
1	A	849	VAL
1	A	897	GLN
1	A	1003	THR
1	A	1150	LYS
1	E	589	PRO
1	E	1150	LYS
1	E	1003	THR
1	A	1103	GLN
1	E	1143	PRO
1	E	1166	GLY
1	A	1243	PRO
1	E	462	PRO
1	A	1153	PRO
1	E	399	ASN
1	E	1026	LYS
1	A	1166	GLY
1	A	462	PRO

Continued on next page...

Continued from previous page...

Mol	Chain	Res	Type
1	A	1143	PRO
1	A	1147	PRO
1	E	1243	PRO

5.3.2 Protein sidechains ⓘ

In the following table, the Percentiles column shows the percent sidechain outliers of the chain as a percentile score with respect to all X-ray entries followed by that with respect to entries of similar resolution.

The Analysed column shows the number of residues for which the sidechain conformation was analysed, and the total number of residues.

Mol	Chain	Analysed	Rotameric	Outliers	Percentiles	
1	A	778/827 (94%)	740 (95%)	38 (5%)	31	53
1	E	778/827 (94%)	734 (94%)	44 (6%)	25	44
All	All	1556/1654 (94%)	1474 (95%)	82 (5%)	28	48

All (82) residues with a non-rotameric sidechain are listed below:

Mol	Chain	Res	Type
1	A	343	PHE
1	A	350	GLU
1	A	354	ASN
1	A	365	VAL
1	A	406	THR
1	A	428	MET
1	A	458	SER
1	A	529	ILE
1	A	555	ASN
1	A	567	SER
1	A	606	ASN
1	A	668	SER
1	A	682	ARG
1	A	726	GLU
1	A	727	ASN
1	A	729	GLN
1	A	764	LEU
1	A	785	SER
1	A	797	TYR
1	A	852	TYR

Continued on next page...

Continued from previous page...

Mol	Chain	Res	Type
1	A	860	ASP
1	A	908	MET
1	A	912	PRO
1	A	933	ASP
1	A	935	ASN
1	A	937	ASP
1	A	938	LEU
1	A	956	MET
1	A	1011	ASN
1	A	1014	ASN
1	A	1039	ASP
1	A	1080	VAL
1	A	1082	ARG
1	A	1106	ASP
1	A	1185	ASN
1	A	1199	GLN
1	A	1231	ASP
1	A	1243	PRO
1	E	343	PHE
1	E	352	GLN
1	E	354	ASN
1	E	365	VAL
1	E	372	THR
1	E	393	GLU
1	E	406	THR
1	E	529	ILE
1	E	546	THR
1	E	548	GLN
1	E	552	ASN
1	E	555	ASN
1	E	567	SER
1	E	596	TYR
1	E	609	VAL
1	E	611	VAL
1	E	672	LYS
1	E	682	ARG
1	E	727	ASN
1	E	730	ASN
1	E	742	LEU
1	E	764	LEU
1	E	784	ARG
1	E	857	LEU

Continued on next page...

Continued from previous page...

Mol	Chain	Res	Type
1	E	860	ASP
1	E	880	GLN
1	E	896	GLU
1	E	916	ARG
1	E	927	GLN
1	E	933	ASP
1	E	935	ASN
1	E	938	LEU
1	E	943	ASP
1	E	945	ARG
1	E	1011	ASN
1	E	1014	ASN
1	E	1039	ASP
1	E	1098	GLN
1	E	1106	ASP
1	E	1173	ASP
1	E	1185	ASN
1	E	1199	GLN
1	E	1231	ASP
1	E	1242	ASP

Some sidechains can be flipped to improve hydrogen bonding and reduce clashes. All (71) such sidechains are listed below:

Mol	Chain	Res	Type
1	A	354	ASN
1	A	548	GLN
1	A	554	GLN
1	A	555	ASN
1	A	566	HIS
1	A	606	ASN
1	A	652	ASN
1	A	669	ASN
1	A	683	ASN
1	A	727	ASN
1	A	729	GLN
1	A	730	ASN
1	A	760	ASN
1	A	770	ASN
1	A	870	GLN
1	A	880	GLN
1	A	897	GLN
1	A	927	GLN

Continued on next page...

Continued from previous page...

Mol	Chain	Res	Type
1	A	931	GLN
1	A	932	GLN
1	A	935	ASN
1	A	954	ASN
1	A	986	HIS
1	A	1011	ASN
1	A	1014	ASN
1	A	1098	GLN
1	A	1103	GLN
1	A	1111	ASN
1	A	1122	ASN
1	A	1125	ASN
1	A	1132	GLN
1	A	1144	GLN
1	A	1181	GLN
1	A	1185	ASN
1	A	1199	GLN
1	A	1201	GLN
1	A	1209	GLN
1	E	354	ASN
1	E	548	GLN
1	E	554	GLN
1	E	555	ASN
1	E	606	ASN
1	E	652	ASN
1	E	669	ASN
1	E	683	ASN
1	E	707	HIS
1	E	727	ASN
1	E	729	GLN
1	E	730	ASN
1	E	770	ASN
1	E	788	ASN
1	E	870	GLN
1	E	880	GLN
1	E	897	GLN
1	E	924	GLN
1	E	931	GLN
1	E	932	GLN
1	E	935	ASN
1	E	946	GLN
1	E	954	ASN

Continued on next page...

Continued from previous page...

Mol	Chain	Res	Type
1	E	1011	ASN
1	E	1014	ASN
1	E	1111	ASN
1	E	1113	GLN
1	E	1122	ASN
1	E	1132	GLN
1	E	1156	HIS
1	E	1181	GLN
1	E	1185	ASN
1	E	1199	GLN
1	E	1201	GLN

5.3.3 RNA [i](#)

Mol	Chain	Analysed	Backbone Outliers	Pucker Outliers
2	B	9/11 (81%)	0	0
2	F	9/11 (81%)	0	0
All	All	18/22 (81%)	0	0

There are no RNA backbone outliers to report.

There are no RNA pucker outliers to report.

5.4 Non-standard residues in protein, DNA, RNA chains [i](#)

There are no non-standard protein/DNA/RNA residues in this entry.

5.5 Carbohydrates [i](#)

There are no carbohydrates in this entry.

5.6 Ligand geometry [i](#)

2 ligands are modelled in this entry.

In the following table, the Counts columns list the number of bonds (or angles) for which Mogul statistics could be retrieved, the number of bonds (or angles) that are observed in the model and the number of bonds (or angles) that are defined in the chemical component dictionary. The Link column lists molecule types, if any, to which the group is linked. The Z score for a bond length (or angle) is the number of standard deviations the observed value is removed from the expected

value. A bond length (or angle) with $|Z| > 2$ is considered an outlier worth inspection. RMSZ is the root-mean-square of all Z scores of the bond lengths (or angles).

Mol	Type	Chain	Res	Link	Bond lengths			Bond angles		
					Counts	RMSZ	$\# Z > 2$	Counts	RMSZ	$\# Z > 2$
4	2ZE	A	1301	-	26,27,27	0.93	3 (11%)	35,46,46	1.31	6 (17%)
4	2ZE	E	1301	-	26,27,27	0.93	2 (7%)	35,46,46	1.29	4 (11%)

In the following table, the Chirals column lists the number of chiral outliers, the number of chiral centers analysed, the number of these observed in the model and the number defined in the chemical component dictionary. Similar counts are reported in the Torsion and Rings columns. '-' means no outliers of that kind were identified.

Mol	Type	Chain	Res	Link	Chirals	Torsions	Rings
4	2ZE	A	1301	-	-	0/6/72/72	0/2/4/4
4	2ZE	E	1301	-	-	0/6/72/72	0/2/4/4

All (5) bond length outliers are listed below:

Mol	Chain	Res	Type	Atoms	Z	Observed(Å)	Ideal(Å)
4	E	1301	2ZE	CAF-CAE	-2.19	1.52	1.57
4	A	1301	2ZE	CAF-CAH	-2.17	1.52	1.56
4	A	1301	2ZE	CAF-CAE	-2.15	1.52	1.57
4	E	1301	2ZE	CAN-CAH	-2.10	1.53	1.56
4	A	1301	2ZE	CAN-CAH	-2.06	1.53	1.56

All (10) bond angle outliers are listed below:

Mol	Chain	Res	Type	Atoms	Z	Observed(°)	Ideal(°)
4	A	1301	2ZE	CAU-CAT-CAN	-2.78	110.00	113.08
4	E	1301	2ZE	CAF-CAH-CAN	-2.63	113.37	116.76
4	A	1301	2ZE	CAF-CAH-CAN	-2.63	113.37	116.76
4	A	1301	2ZE	CAR-CAP-CAJ	-2.56	106.95	110.24
4	E	1301	2ZE	CAU-CAT-CAN	-2.53	110.28	113.08
4	A	1301	2ZE	CAU-CAQ-CAF	-2.03	109.35	112.80
4	A	1301	2ZE	CAO-CAH-CAN	-2.02	111.53	114.32
4	E	1301	2ZE	CAH-CAN-CAT	2.12	110.47	108.01
4	E	1301	2ZE	CAL-CAE-CAI	2.52	111.46	106.48
4	A	1301	2ZE	CAL-CAE-CAI	2.54	111.50	106.48

There are no chirality outliers.

There are no torsion outliers.

There are no ring outliers.

2 monomers are involved in 14 short contacts:

Mol	Chain	Res	Type	Clashes	Symm-Clashes
4	A	1301	2ZE	8	0
4	E	1301	2ZE	6	0

5.7 Other polymers [i](#)

There are no such residues in this entry.

5.8 Polymer linkage issues [i](#)

There are no chain breaks in this entry.

6 Fit of model and data

6.1 Protein, DNA and RNA chains

In the following table, the column labelled ‘#RSRZ> 2’ contains the number (and percentage) of RSRZ outliers, followed by percent RSRZ outliers for the chain as percentile scores relative to all X-ray entries and entries of similar resolution. The OWAB column contains the minimum, median, 95th percentile and maximum values of the occupancy-weighted average B-factor per residue. The column labelled ‘Q< 0.9’ lists the number of (and percentage) of residues with an average occupancy less than 0.9.

Mol	Chain	Analysed	<RSRZ>	#RSRZ>2	OWAB(Å ²)	Q<0.9
1	A	865/922 (93%)	0.44	68 (7%) 15 17	15, 54, 113, 128	0
1	E	865/922 (93%)	0.34	43 (4%) 32 37	18, 52, 105, 129	0
2	B	11/11 (100%)	-0.64	0 100 100	48, 62, 78, 87	0
2	F	11/11 (100%)	-0.45	0 100 100	43, 52, 79, 81	0
3	C	13/21 (61%)	-0.23	0 100 100	37, 59, 92, 101	0
3	G	13/21 (61%)	-0.29	0 100 100	42, 57, 76, 85	0
All	All	1778/1908 (93%)	0.37	111 (6%) 24 27	15, 53, 111, 129	0

All (111) RSRZ outliers are listed below:

Mol	Chain	Res	Type	RSRZ
1	A	1241	LEU	9.3
1	A	1239	LEU	8.4
1	E	550	ALA	7.3
1	A	1180	CYS	7.1
1	A	1193	TYR	6.0
1	A	1233	VAL	5.9
1	A	1119	ILE	5.9
1	A	678	GLY	5.6
1	E	1204	LEU	5.6
1	A	1186	LEU	5.6
1	A	1124	LEU	5.2
1	A	1210	TYR	5.1
1	E	399	ASN	5.0
1	A	1150	LYS	4.7
1	E	1149	LYS	4.5
1	A	672	LYS	4.5
1	A	1204	LEU	4.3
1	A	1167	ARG	4.2
1	A	1127	SER	4.2

Continued on next page...

Continued from previous page...

Mol	Chain	Res	Type	RSRZ
1	A	1123	VAL	4.2
1	E	1206	ILE	4.1
1	A	1133	PHE	4.0
1	E	1202	ASP	4.0
1	A	1158	ALA	3.9
1	E	1128	VAL	3.9
1	A	1149	LYS	3.8
1	A	353	TYR	3.7
1	E	1065	ASP	3.6
1	A	1179	ILE	3.5
1	E	681	GLU	3.5
1	A	1177	TYR	3.5
1	E	1150	LYS	3.5
1	A	1117	ILE	3.5
1	A	550	ALA	3.5
1	E	1198	LEU	3.4
1	E	1146	TYR	3.3
1	A	552	ASN	3.3
1	A	1128	VAL	3.3
1	A	1196	GLU	3.3
1	A	1116	LEU	3.3
1	E	1205	THR	3.3
1	A	1065	ASP	3.2
1	E	1120	GLY	3.1
1	A	1230	ILE	3.1
1	E	1158	ALA	3.1
1	A	1066	GLY	3.1
1	E	1124	LEU	3.1
1	E	1180	CYS	3.0
1	E	1179	ILE	3.0
1	A	551	LYS	2.9
1	A	1211	TYR	2.9
1	E	1066	GLY	2.9
1	E	1109	VAL	2.8
1	E	592	CYS	2.8
1	A	1183	GLY	2.8
1	A	1108	ILE	2.7
1	A	681	GLU	2.7
1	E	1211	TYR	2.7
1	A	1159	LEU	2.7
1	A	1113	GLN	2.7
1	A	1170	LYS	2.7

Continued on next page...

Continued from previous page...

Mol	Chain	Res	Type	RSRZ
1	E	682	ARG	2.7
1	E	1210	TYR	2.7
1	A	1235	ILE	2.7
1	E	1079	ILE	2.6
1	A	1206	ILE	2.6
1	E	1123	VAL	2.6
1	A	1182	ASP	2.6
1	A	1155	VAL	2.5
1	A	1169	VAL	2.5
1	E	1199	GLN	2.5
1	A	1165	GLY	2.5
1	A	1166	GLY	2.5
1	E	1121	GLU	2.5
1	E	1200	LYS	2.5
1	A	1217	HIS	2.5
1	E	730	ASN	2.5
1	E	604	LYS	2.5
1	A	1185	ASN	2.5
1	A	1048	LEU	2.4
1	E	1167	ARG	2.4
1	A	1019	PHE	2.4
1	E	1105	ARG	2.4
1	E	1177	TYR	2.4
1	A	1184	SER	2.4
1	A	1130	VAL	2.3
1	A	1192	ALA	2.3
1	A	1214	GLN	2.3
1	E	551	LYS	2.3
1	A	1178	VAL	2.3
1	E	1108	ILE	2.3
1	A	608	LYS	2.3
1	A	1216	ILE	2.2
1	A	1236	ALA	2.2
1	A	1229	GLY	2.2
1	E	1193	TYR	2.2
1	E	1135	ILE	2.2
1	A	1139	LEU	2.2
1	A	553	HIS	2.1
1	A	1126	GLY	2.1
1	A	1168	LYS	2.1
1	E	1192	ALA	2.1
1	E	1194	ALA	2.1

Continued on next page...

Continued from previous page...

Mol	Chain	Res	Type	RSRZ
1	E	445	ASP	2.1
1	A	1181	GLN	2.1
1	A	680	GLY	2.1
1	A	1200	LYS	2.0
1	A	1046	SER	2.0
1	A	1115	ARG	2.0
1	E	1159	LEU	2.0
1	E	1084	TRP	2.0

6.2 Non-standard residues in protein, DNA, RNA chains [i](#)

There are no non-standard protein/DNA/RNA residues in this entry.

6.3 Carbohydrates [i](#)

There are no carbohydrates in this entry.

6.4 Ligands [i](#)

In the following table, the Atoms column lists the number of modelled atoms in the group and the number defined in the chemical component dictionary. LLDF column lists the quality of electron density of the group with respect to its neighbouring residues in protein, DNA or RNA chains. The B-factors column lists the minimum, median, 95th percentile and maximum values of B factors of atoms in the group. The column labelled 'Q< 0.9' lists the number of atoms with occupancy less than 0.9.

Mol	Type	Chain	Res	Atoms	RSCC	RSR	LLDF	B-factors(\AA^2)	Q<0.9
4	2ZE	A	1301	24/24	0.95	0.14	-0.32	20,29,34,42	0
4	2ZE	E	1301	24/24	0.96	0.14	-0.65	30,37,43,43	0

6.5 Other polymers [i](#)

There are no such residues in this entry.