



# Full wwPDB X-ray Structure Validation Report ⓘ

Feb 1, 2016 – 07:58 PM GMT

PDB ID : 4QKF  
Title : Crystal structure of human ALKBH7 in complex with N-oxalylglycine and Mn(II)  
Authors : Wang, G.; Chen, Z.  
Deposited on : 2014-06-06  
Resolution : 1.99 Å(reported)

This is a Full wwPDB X-ray Structure Validation Report for a publicly released PDB entry.  
We welcome your comments at [validation@mail.wwpdb.org](mailto:validation@mail.wwpdb.org)  
A user guide is available at  
<http://wwpdb.org/validation/2016/XrayValidationReportHelp>  
with specific help available everywhere you see the ⓘ symbol.

---

The following versions of software and data (see [references ⓘ](#)) were used in the production of this report:

MolProbity : 4.02b-467  
Mogul : 1.7 (RC4), CSD as536be (2015)  
Xtriage (Phenix) : 1.9-1692  
EDS : rb-20026688  
Percentile statistics : 20151230.v01 (using entries in the PDB archive December 30th 2015)  
Refmac : 5.8.0135  
CCP4 : 6.5.0  
Ideal geometry (proteins) : Engh & Huber (2001)  
Ideal geometry (DNA, RNA) : Parkinson et al. (1996)  
Validation Pipeline (wwPDB-VP) : trunk26865

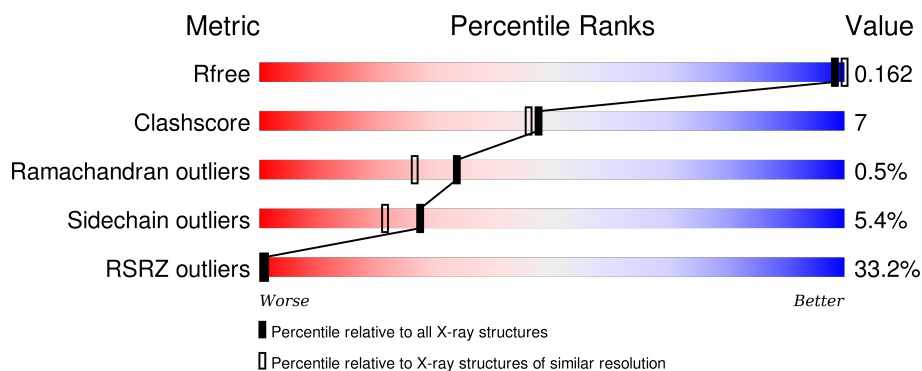
# 1 Overall quality at a glance

The following experimental techniques were used to determine the structure:

## *X-RAY DIFFRACTION*

The reported resolution of this entry is 1.99 Å.

Percentile scores (ranging between 0-100) for global validation metrics of the entry are shown in the following graphic. The table shows the number of entries on which the scores are based.



Metric	Whole archive (#Entries)	Similar resolution (#Entries, resolution range(Å))
$R_{free}$	91344	6249 (2.00-2.00)
Clashscore	102246	7340 (2.00-2.00)
Ramachandran outliers	100387	7248 (2.00-2.00)
Sidechain outliers	100360	7247 (2.00-2.00)
RSRZ outliers	91569	6262 (2.00-2.00)

The table below summarises the geometric issues observed across the polymeric chains and their fit to the electron density. The red, orange, yellow and green segments on the lower bar indicate the fraction of residues that contain outliers for  $\geq 3$ , 2, 1 and 0 types of geometric quality criteria. A grey segment represents the fraction of residues that are not modelled. The numeric value for each fraction is indicated below the corresponding segment, with a dot representing fractions  $\leq 5\%$ . The upper red bar (where present) indicates the fraction of residues that have poor fit to the electron density. The numeric value is given above the bar.

Mol	Chain	Length	Quality of chain
1	A	200	<div> <div>31%</div> <div>79%</div> <div>16%</div> <div>• 5%</div> </div>
1	B	200	<div> <div>33%</div> <div>77%</div> <div>16%</div> <div>•• 5%</div> </div>
1	C	200	<div> <div>31%</div> <div>74%</div> <div>20%</div> <div>• 5%</div> </div>

The following table lists non-polymeric compounds, carbohydrate monomers and non-standard residues in protein, DNA, RNA chains that are outliers for geometric or electron-density-fit criteria:

Mol	Type	Chain	Res	Chirality	Geometry	Clashes	Electron density
3	OGA	C	302	-	-	X	-

## 2 Entry composition

There are 4 unique types of molecules in this entry. The entry contains 4689 atoms, of which 0 are hydrogens and 0 are deuteriums.

In the tables below, the ZeroOcc column contains the number of atoms modelled with zero occupancy, the AltConf column contains the number of residues with at least one atom in alternate conformation and the Trace column contains the number of residues modelled with at most 2 atoms.

- Molecule 1 is a protein called Alpha-ketoglutarate-dependent dioxygenase alkB homolog 7, mitochondrial.

Mol	Chain	Residues	Atoms					ZeroOcc	AltConf	Trace
1	A	190	Total	C	N	O	S	0	0	0
			1502	952	276	271	3			
1	B	190	Total	C	N	O	S	0	0	0
			1502	952	276	271	3			
1	C	190	Total	C	N	O	S	0	0	0
			1502	952	276	271	3			

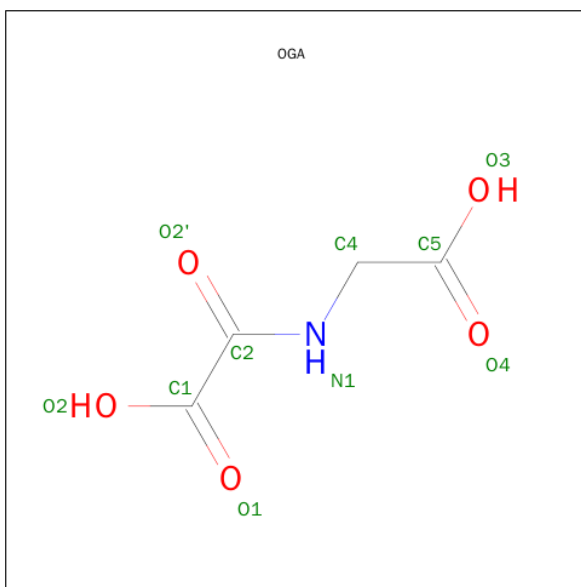
There are 6 discrepancies between the modelled and reference sequences:

Chain	Residue	Modelled	Actual	Comment	Reference
A	16	MET	-	EXPRESSION TAG	UNP Q9BT30
A	90	ARG	GLN	ENGINEERED MUTATION	UNP Q9BT30
B	16	MET	-	EXPRESSION TAG	UNP Q9BT30
B	90	ARG	GLN	ENGINEERED MUTATION	UNP Q9BT30
C	16	MET	-	EXPRESSION TAG	UNP Q9BT30
C	90	ARG	GLN	ENGINEERED MUTATION	UNP Q9BT30

- Molecule 2 is MANGANESE (II) ION (three-letter code: MN) (formula: Mn).

Mol	Chain	Residues	Atoms		ZeroOcc	AltConf
2	B	1	Total	Mn	0	0
			1	1		
2	A	1	Total	Mn	0	0
			1	1		
2	C	2	Total	Mn	0	0
			2	2		

- Molecule 3 is N-OXALYLGLYCINE (three-letter code: OGA) (formula: C<sub>4</sub>H<sub>5</sub>NO<sub>5</sub>).



Mol	Chain	Residues	Atoms				ZeroOcc	AltConf
3	A	1	Total	C	N	O	0	0
			10	4	1	5		
3	C	1	Total	C	N	O	0	0
			10	4	1	5		

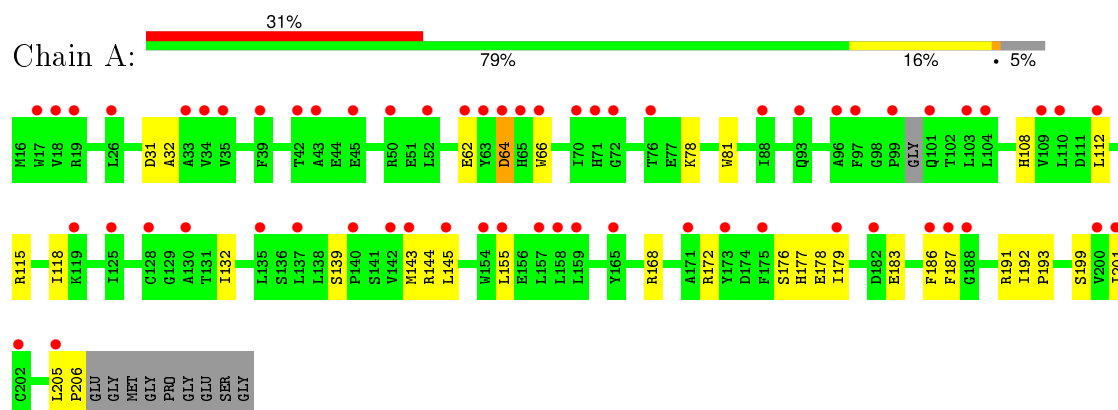
- Molecule 4 is water.

Mol	Chain	Residues	Atoms		ZeroOcc	AltConf
4	A	51	Total	O	0	0
			51	51		
4	B	49	Total	O	0	0
			49	49		
4	C	59	Total	O	0	0
			59	59		

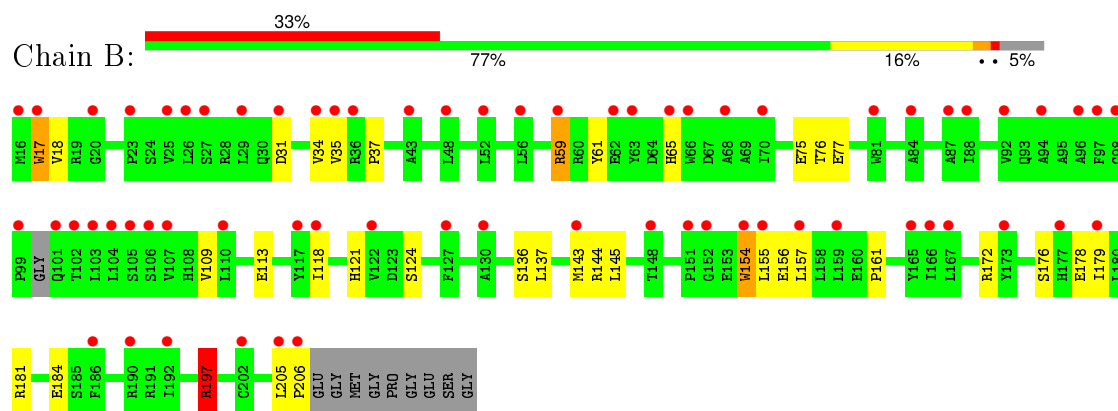
### 3 Residue-property plots

These plots are drawn for all protein, RNA and DNA chains in the entry. The first graphic for a chain summarises the proportions of errors displayed in the second graphic. The second graphic shows the sequence view annotated by issues in geometry and electron density. Residues are color-coded according to the number of geometric quality criteria for which they contain at least one outlier: green = 0, yellow = 1, orange = 2 and red = 3 or more. A red dot above a residue indicates a poor fit to the electron density ( $RSRZ > 2$ ). Stretches of 2 or more consecutive residues without any outlier are shown as a green connector. Residues present in the sample, but not in the model, are shown in grey.

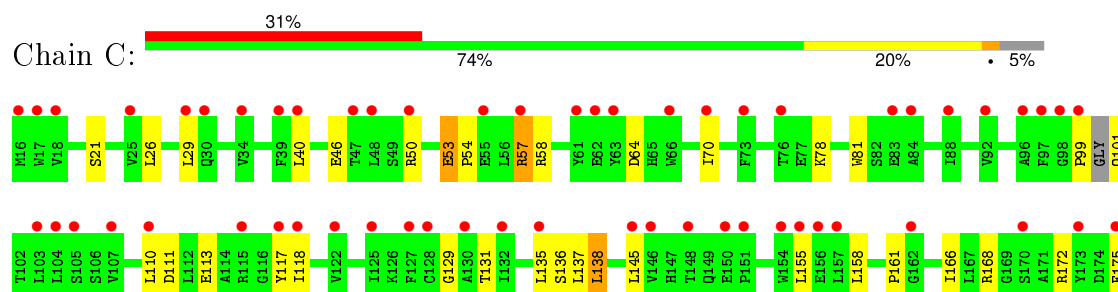
- Molecule 1: Alpha-ketoglutarate-dependent dioxygenase alkB homolog 7, mitochondrial

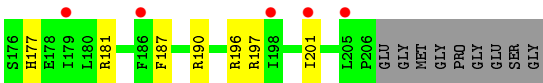


- Molecule 1: Alpha-ketoglutarate-dependent dioxygenase alkB homolog 7, mitochondrial



- Molecule 1: Alpha-ketoglutarate-dependent dioxygenase alkB homolog 7, mitochondrial





## 4 Data and refinement statistics

Property	Value	Source
Space group	P 1 21 1	Depositor
Cell constants a, b, c, $\alpha$ , $\beta$ , $\gamma$	66.36 Å   81.96 Å   66.08 Å 90.00°   119.94°   90.00°	Depositor
Resolution (Å)	33.37 – 1.99 33.37 – 1.98	Depositor EDS
% Data completeness (in resolution range)	95.6 (33.37-1.99) 95.4 (33.37-1.98)	Depositor EDS
$R_{merge}$	(Not available)	Depositor
$R_{sym}$	(Not available)	Depositor
$\langle I/\sigma(I) \rangle$ <sup>1</sup>	16.21 (at 1.98 Å)	Xtriage
Refinement program	REFMAC 5.8.0049	Depositor
R, $R_{free}$	0.159 , 0.165 0.158 , 0.162	Depositor DCC
$R_{free}$ test set	2044 reflections (5.31%)	DCC
Wilson B-factor (Å <sup>2</sup> )	29.8	Xtriage
Anisotropy	0.562	Xtriage
Bulk solvent $k_{sol}$ (e/Å <sup>3</sup> ), $B_{sol}$ (Å <sup>2</sup> )	0.32 , 20.2	EDS
Estimated twinning fraction	0.305 for H, K, L 0.153 for H+L, -K, -L 0.128 for -H, -K, H+L 0.136 for L, K, -H-L 0.076 for -H-L, K, H 0.202 for L, -K, H 0.378 for -h-l,k,h 0.378 for l,k,-h-l 0.368 for -h-l,-k,l 0.407 for l,-k,h 0.368 for h,-k,-h-l	Xtriage
Reported twinning fraction	0.305 for H, K, L 0.153 for H+L, -K, -L 0.128 for -H, -K, H+L 0.136 for L, K, -H-L 0.076 for -H-L, K, H 0.202 for L, -K, H	Depositor
L-test for twinning <sup>2</sup>	$\langle  L  \rangle = 0.32$ , $\langle L^2 \rangle = 0.15$	Xtriage
Outliers	0 of 40691 reflections	Xtriage
$F_o, F_c$ correlation	0.96	EDS
Total number of atoms	4689	wwPDB-VP

*Continued on next page...*

<sup>1</sup>Intensities estimated from amplitudes.

<sup>2</sup>Theoretical values of  $\langle |L| \rangle$ ,  $\langle L^2 \rangle$  for acentric reflections are 0.5, 0.375 respectively for untwinned datasets, and 0.333, 0.2 for perfectly twinned datasets.



*Continued from previous page...*

Property	Value	Source
Average B, all atoms ( $\text{\AA}^2$ )	35.0	wwPDB-VP

Xtriage's analysis on translational NCS is as follows: *The largest off-origin peak in the Patterson function is 3.98% of the height of the origin peak. No significant pseudotranslation is detected.*

## 5 Model quality [i](#)

### 5.1 Standard geometry [i](#)

Bond lengths and bond angles in the following residue types are not validated in this section: MN, OGA

The Z score for a bond length (or angle) is the number of standard deviations the observed value is removed from the expected value. A bond length (or angle) with  $|Z| > 5$  is considered an outlier worth inspection. RMSZ is the root-mean-square of all Z scores of the bond lengths (or angles).

Mol	Chain	Bond lengths		Bond angles	
		RMSZ	$\# Z  > 5$	RMSZ	$\# Z  > 5$
1	A	0.50	0/1536	0.71	0/2077
1	B	0.51	0/1536	0.73	2/2077 (0.1%)
1	C	0.48	0/1536	0.69	0/2077
All	All	0.50	0/4608	0.71	2/6231 (0.0%)

There are no bond length outliers.

All (2) bond angle outliers are listed below:

Mol	Chain	Res	Type	Atoms	Z	Observed(°)	Ideal(°)
1	B	197	ARG	NE-CZ-NH2	-7.89	116.36	120.30
1	B	197	ARG	CG-CD-NE	-5.70	99.82	111.80

There are no chirality outliers.

There are no planarity outliers.

### 5.2 Too-close contacts [i](#)

In the following table, the Non-H and H(model) columns list the number of non-hydrogen atoms and hydrogen atoms in the chain respectively. The H(added) column lists the number of hydrogen atoms added and optimized by MolProbity. The Clashes column lists the number of clashes within the asymmetric unit, whereas Symm-Clashes lists symmetry related clashes.

Mol	Chain	Non-H	H(model)	H(added)	Clashes	Symm-Clashes
1	A	1502	0	1473	19	0
1	B	1502	0	1473	20	0
1	C	1502	0	1473	28	0
2	A	1	0	0	0	0
2	B	1	0	0	0	0
2	C	2	0	0	0	0

*Continued on next page...*

*Continued from previous page...*

Mol	Chain	Non-H	H(model)	H(added)	Clashes	Symm-Clashes
3	A	10	0	3	0	0
3	C	10	0	3	5	0
4	A	51	0	0	1	0
4	B	49	0	0	3	0
4	C	59	0	0	1	0
All	All	4689	0	4425	66	0

The all-atom clashscore is defined as the number of clashes found per 1000 atoms (including hydrogen atoms). The all-atom clashscore for this structure is 7.

All (66) close contacts within the same asymmetric unit are listed below, sorted by their clash magnitude.

Atom-1	Atom-2	Interatomic distance (Å)	Clash overlap (Å)
1:C:40:LEU:HD11	1:C:135:LEU:HD22	1.53	0.90
1:C:70:ILE:HD11	3:C:302:OGA:O1	1.90	0.72
1:B:17:TRP:CE3	1:B:37:PRO:HG2	2.27	0.69
1:A:118:ILE:HD12	1:A:179:ILE:HD13	1.74	0.68
1:A:108:HIS:HB3	1:A:201:ILE:HG23	1.76	0.68
1:B:143:MET:HE2	1:B:179:ILE:HD11	1.75	0.68
1:C:53:GLU:HG3	1:C:57:ARG:NH1	2.13	0.63
1:A:108:HIS:O	1:A:201:ILE:HG22	1.99	0.62
1:A:132:ILE:HG23	1:A:201:ILE:HD11	1.84	0.59
1:B:17:TRP:CD2	1:B:37:PRO:HG2	2.38	0.59
1:C:57:ARG:HB3	1:C:57:ARG:NH1	2.17	0.58
1:B:136:SER:C	1:B:137:LEU:HD12	2.23	0.58
1:C:197:ARG:HH12	3:C:302:OGA:C5	2.17	0.57
1:C:101:GLN:NE2	1:C:131:THR:OG1	2.33	0.56
1:A:205:LEU:HD12	1:A:206:PRO:HD2	1.88	0.56
1:B:118:ILE:HD12	1:B:179:ILE:HD13	1.86	0.56
1:C:190:ARG:NH2	4:C:417:HOH:O	2.39	0.55
1:C:110:LEU:HD23	3:C:302:OGA:O3	2.06	0.55
1:A:132:ILE:CG2	1:A:201:ILE:HD11	2.37	0.54
1:A:64:ASP:HB3	1:B:77:GLU:HG3	1.89	0.54
1:A:187:PHE:HB2	1:A:192:ILE:HD11	1.90	0.54
1:C:110:LEU:HD21	1:C:118:ILE:HD11	1.90	0.53
1:C:145:LEU:HD23	1:C:177:HIS:HB3	1.90	0.53
1:C:57:ARG:HB3	1:C:57:ARG:HH11	1.73	0.52
1:A:108:HIS:HB3	1:A:201:ILE:CG2	2.39	0.51
1:A:112:LEU:HD11	1:A:118:ILE:HG13	1.91	0.51
1:B:205:LEU:HD12	1:B:206:PRO:HD2	1.93	0.51
1:A:187:PHE:CB	1:A:192:ILE:HD11	2.42	0.49

*Continued on next page...*

*Continued from previous page...*

Atom-1	Atom-2	Interatomic distance (Å)	Clash overlap (Å)
1:B:59:ARG:NH1	1:B:75:GLU:O	2.45	0.49
1:A:115:ARG:NH2	4:A:422:HOH:O	2.44	0.49
1:A:32:ALA:HA	1:A:168:ARG:HG3	1.94	0.48
1:B:157:LEU:HG	4:B:431:HOH:O	2.13	0.48
1:C:117:TYR:CG	1:C:181:ARG:HB3	2.50	0.47
1:A:143:MET:HA	1:A:178:GLU:O	2.14	0.47
1:B:155:LEU:HD23	1:B:156:GLU:N	2.30	0.46
1:B:181:ARG:HG2	1:B:184:GLU:HG2	1.99	0.45
1:C:145:LEU:CD2	1:C:177:HIS:HB3	2.47	0.45
1:C:136:SER:O	1:C:161:PRO:HA	2.17	0.45
1:B:145:LEU:HA	1:B:176:SER:O	2.17	0.45
1:B:178:GLU:HA	4:B:428:HOH:O	2.15	0.45
1:C:70:ILE:HG23	1:C:118:ILE:HG12	1.98	0.45
1:A:78:LYS:HD3	1:A:81:TRP:CH2	2.52	0.44
1:B:136:SER:OG	1:B:197:ARG:NH2	2.49	0.44
1:C:166:ILE:HG21	1:C:168:ARG:NH2	2.33	0.44
1:B:35:VAL:HG23	1:B:157:LEU:HD22	2.00	0.44
1:C:111:ASP:OD1	1:C:196:ARG:NE	2.51	0.44
1:C:78:LYS:HB3	1:C:81:TRP:CZ2	2.53	0.44
1:C:99:PRO:HD2	1:C:101:GLN:HG3	1.99	0.43
1:C:29:LEU:HD11	1:C:175:PHE:CZ	2.53	0.43
1:C:26:LEU:HD23	1:C:155:LEU:HD21	2.01	0.42
1:B:121:HIS:HE1	4:B:426:HOH:O	2.02	0.42
1:A:191:ARG:HG2	1:A:193:PRO:HD3	2.00	0.42
1:B:76:THR:HG22	1:B:109:VAL:HB	2.02	0.42
1:B:61:TYR:CE1	1:B:113:GLU:HB3	2.54	0.42
1:A:144:ARG:O	1:A:177:HIS:HA	2.19	0.42
1:C:137:LEU:O	1:C:138:LEU:HB2	2.20	0.42
1:B:144:ARG:HD2	1:B:154:TRP:HE1	1.85	0.41
1:C:53:GLU:O	1:C:57:ARG:HD2	2.20	0.41
1:C:201:ILE:HD11	3:C:302:OGA:C5	2.50	0.41
1:C:118:ILE:CD1	3:C:302:OGA:H4C1	2.51	0.41
1:C:54:PRO:HA	1:C:57:ARG:CD	2.51	0.41
1:B:136:SER:O	1:B:161:PRO:HA	2.21	0.41
1:A:31:ASP:O	1:A:168:ARG:HD2	2.21	0.41
1:A:145:LEU:HA	1:A:176:SER:O	2.20	0.41
1:C:46:GLU:OE2	1:C:50:ARG:NH2	2.55	0.40
1:C:158:LEU:HB2	1:C:187:PHE:CD1	2.56	0.40

There are no symmetry-related clashes.

## 5.3 Torsion angles

### 5.3.1 Protein backbone

In the following table, the Percentiles column shows the percent Ramachandran outliers of the chain as a percentile score with respect to all X-ray entries followed by that with respect to entries of similar resolution.

The Analysed column shows the number of residues for which the backbone conformation was analysed, and the total number of residues.

Mol	Chain	Analysed	Favoured	Allowed	Outliers	Percentiles	
1	A	186/200 (93%)	178 (96%)	7 (4%)	1 (0%)	34	26
1	B	186/200 (93%)	178 (96%)	8 (4%)	0	100	100
1	C	186/200 (93%)	176 (95%)	8 (4%)	2 (1%)	17	9
All	All	558/600 (93%)	532 (95%)	23 (4%)	3 (0%)	34	26

All (3) Ramachandran outliers are listed below:

Mol	Chain	Res	Type
1	C	138	LEU
1	A	66	TRP
1	C	129	GLY

### 5.3.2 Protein sidechains

In the following table, the Percentiles column shows the percent sidechain outliers of the chain as a percentile score with respect to all X-ray entries followed by that with respect to entries of similar resolution.

The Analysed column shows the number of residues for which the sidechain conformation was analysed, and the total number of residues.

Mol	Chain	Analysed	Rotameric	Outliers	Percentiles	
1	A	155/168 (92%)	147 (95%)	8 (5%)	29	23
1	B	155/168 (92%)	145 (94%)	10 (6%)	21	15
1	C	155/168 (92%)	148 (96%)	7 (4%)	34	29
All	All	465/504 (92%)	440 (95%)	25 (5%)	27	21

All (25) residues with a non-rotameric sidechain are listed below:

Mol	Chain	Res	Type
1	A	62	GLU
1	A	64	ASP
1	A	139	SER
1	A	155	LEU
1	A	172	ARG
1	A	183	GLU
1	A	186	PHE
1	A	199	SER
1	B	17	TRP
1	B	18	VAL
1	B	31	ASP
1	B	34	VAL
1	B	59	ARG
1	B	65	HIS
1	B	124	SER
1	B	154	TRP
1	B	172	ARG
1	B	197	ARG
1	C	21	SER
1	C	53	GLU
1	C	57	ARG
1	C	58	ARG
1	C	64	ASP
1	C	113	GLU
1	C	172	ARG

Some sidechains can be flipped to improve hydrogen bonding and reduce clashes. All (1) such sidechains are listed below:

Mol	Chain	Res	Type
1	B	101	GLN

### 5.3.3 RNA ⓘ

There are no RNA molecules in this entry.

## 5.4 Non-standard residues in protein, DNA, RNA chains ⓘ

There are no non-standard protein/DNA/RNA residues in this entry.

## 5.5 Carbohydrates [i](#)

There are no carbohydrates in this entry.

## 5.6 Ligand geometry [i](#)

Of 6 ligands modelled in this entry, 4 are monoatomic - leaving 2 for Mogul analysis.

In the following table, the Counts columns list the number of bonds (or angles) for which Mogul statistics could be retrieved, the number of bonds (or angles) that are observed in the model and the number of bonds (or angles) that are defined in the chemical component dictionary. The Link column lists molecule types, if any, to which the group is linked. The Z score for a bond length (or angle) is the number of standard deviations the observed value is removed from the expected value. A bond length (or angle) with  $|Z| > 2$  is considered an outlier worth inspection. RMSZ is the root-mean-square of all Z scores of the bond lengths (or angles).

Mol	Type	Chain	Res	Link	Bond lengths			Bond angles		
					Counts	RMSZ	$\# Z  > 2$	Counts	RMSZ	$\# Z  > 2$
3	OGA	A	301	2	3,9,9	0.29	0	3,11,11	0.67	0
3	OGA	C	302	2	3,9,9	0.83	0	3,11,11	1.35	0

In the following table, the Chirals column lists the number of chiral outliers, the number of chiral centers analysed, the number of these observed in the model and the number defined in the chemical component dictionary. Similar counts are reported in the Torsion and Rings columns. '-' means no outliers of that kind were identified.

Mol	Type	Chain	Res	Link	Chirals	Torsions	Rings
3	OGA	A	301	2	-	0/3/9/9	0/0/0/0
3	OGA	C	302	2	-	0/3/9/9	0/0/0/0

There are no bond length outliers.

There are no bond angle outliers.

There are no chirality outliers.

There are no torsion outliers.

There are no ring outliers.

1 monomer is involved in 5 short contacts:

Mol	Chain	Res	Type	Clashes	Symm-Clashes
3	C	302	OGA	5	0

## 5.7 Other polymers

There are no such residues in this entry.

## 5.8 Polymer linkage issues

There are no chain breaks in this entry.



## 6 Fit of model and data

### 6.1 Protein, DNA and RNA chains

In the following table, the column labelled ‘#RSRZ> 2’ contains the number (and percentage) of RSRZ outliers, followed by percent RSRZ outliers for the chain as percentile scores relative to all X-ray entries and entries of similar resolution. The OWAB column contains the minimum, median, 95<sup>th</sup> percentile and maximum values of the occupancy-weighted average B-factor per residue. The column labelled ‘Q< 0.9’ lists the number of (and percentage) of residues with an average occupancy less than 0.9.

Mol	Chain	Analysed	<RSRZ>	#RSRZ>2	OWAB(Å <sup>2</sup> )	Q<0.9
1	A	190/200 (95%)	1.76	61 (32%) <b>1</b> <b>1</b>	20, 34, 48, 64	1 (0%)
1	B	190/200 (95%)	1.78	66 (34%) <b>0</b> <b>1</b>	21, 33, 53, 63	1 (0%)
1	C	190/200 (95%)	1.89	62 (32%) <b>1</b> <b>1</b>	20, 35, 54, 71	0
All	All	570/600 (95%)	1.81	189 (33%) <b>0</b> <b>1</b>	20, 34, 53, 71	2 (0%)

All (189) RSRZ outliers are listed below:

Mol	Chain	Res	Type	RSRZ
1	C	146	VAL	6.9
1	B	103	LEU	6.9
1	C	99	PRO	6.7
1	C	17	TRP	6.7
1	C	98	GLY	6.4
1	C	186	PHE	6.1
1	A	17	TRP	6.1
1	C	103	LEU	6.1
1	C	29	LEU	5.7
1	A	63	TYR	5.7
1	B	17	TRP	5.4
1	A	155	LEU	5.4
1	C	150	GLU	5.3
1	A	186	PHE	5.1
1	C	25	VAL	4.9
1	C	92	VAL	4.8
1	C	66	TRP	4.3
1	B	88	ILE	4.3
1	B	130	ALA	4.3
1	B	63	TYR	4.3
1	B	99	PRO	4.3
1	A	103	LEU	4.2
1	B	101	GLN	4.2

*Continued on next page...*

*Continued from previous page...*

Mol	Chain	Res	Type	RSRZ
1	C	34	VAL	4.1
1	C	63	TYR	4.1
1	B	92	VAL	4.1
1	B	205	LEU	4.0
1	B	106	SER	4.0
1	A	50	ARG	4.0
1	C	76	THR	4.0
1	A	109	VAL	3.9
1	A	104	LEU	3.9
1	A	157	LEU	3.8
1	C	205	LEU	3.8
1	B	173	TYR	3.8
1	A	34	VAL	3.8
1	C	145	LEU	3.7
1	C	50	ARG	3.7
1	C	198	ILE	3.7
1	A	128	CYS	3.7
1	A	171	ALA	3.7
1	B	36	ARG	3.6
1	B	102	THR	3.6
1	A	125	ILE	3.6
1	B	122	VAL	3.6
1	C	57	ARG	3.6
1	B	104	LEU	3.5
1	B	154	TRP	3.5
1	A	93	GLN	3.5
1	C	96	ALA	3.5
1	B	25	VAL	3.4
1	B	29	LEU	3.4
1	C	125	ILE	3.4
1	A	96	ALA	3.4
1	C	128	CYS	3.4
1	A	165	TYR	3.3
1	A	35	VAL	3.3
1	B	66	TRP	3.3
1	B	110	LEU	3.3
1	B	107	VAL	3.3
1	A	97	PHE	3.2
1	C	48	LEU	3.2
1	A	200	VAL	3.2
1	B	81	TRP	3.2
1	A	39	PHE	3.2

*Continued on next page...*

*Continued from previous page...*

Mol	Chain	Res	Type	RSRZ
1	B	94	ALA	3.2
1	C	16	MET	3.2
1	C	148	THR	3.2
1	B	166	ILE	3.1
1	A	130	ALA	3.1
1	A	205	LEU	3.1
1	A	99	PRO	3.1
1	B	34	VAL	3.1
1	A	201	ILE	3.0
1	C	88	ILE	3.0
1	B	151	PRO	3.0
1	C	127	PHE	3.0
1	B	98	GLY	3.0
1	A	112	LEU	3.0
1	A	158	LEU	3.0
1	C	156	GLU	3.0
1	C	118	ILE	3.0
1	A	140	PRO	2.9
1	C	173	TYR	2.9
1	C	154	TRP	2.9
1	A	88	ILE	2.9
1	C	84	ALA	2.9
1	B	143	MET	2.9
1	B	56	LEU	2.9
1	B	159	LEU	2.9
1	B	27	SER	2.9
1	B	16	MET	2.8
1	B	48	LEU	2.8
1	C	117	TYR	2.8
1	A	33	ALA	2.8
1	A	52	LEU	2.8
1	B	96	ALA	2.8
1	A	76	THR	2.8
1	B	23	PRO	2.8
1	B	155	LEU	2.7
1	C	104	LEU	2.7
1	A	137	LEU	2.7
1	B	26	LEU	2.7
1	A	18	VAL	2.7
1	A	45	GLU	2.7
1	A	119	LYS	2.6
1	B	192	ILE	2.6

*Continued on next page...*

*Continued from previous page...*

Mol	Chain	Res	Type	RSRZ
1	C	39	PHE	2.6
1	A	142	VAL	2.6
1	A	71	HIS	2.6
1	C	73	PHE	2.6
1	B	177	HIS	2.6
1	A	62	GLU	2.6
1	C	155	LEU	2.6
1	B	118	ILE	2.6
1	A	154	TRP	2.5
1	C	97	PHE	2.5
1	A	202	CYS	2.5
1	A	135	LEU	2.5
1	A	187	PHE	2.5
1	B	97	PHE	2.5
1	C	122	VAL	2.5
1	C	201	ILE	2.5
1	B	35	VAL	2.5
1	C	55	GLU	2.5
1	B	70	ILE	2.5
1	B	105	SER	2.5
1	A	101	GLN	2.5
1	C	62	GLU	2.5
1	A	110	LEU	2.4
1	A	70	ILE	2.4
1	B	68	ALA	2.4
1	C	130	ALA	2.4
1	C	151	PRO	2.4
1	B	167	LEU	2.4
1	C	170	SER	2.4
1	B	31	ASP	2.4
1	C	70	ILE	2.4
1	C	132	ILE	2.4
1	A	159	LEU	2.4
1	B	157	LEU	2.4
1	B	127	PHE	2.4
1	C	47	THR	2.4
1	C	157	LEU	2.4
1	C	30	GLN	2.3
1	B	117	TYR	2.3
1	A	65	HIS	2.3
1	A	64	ASP	2.3
1	A	26	LEU	2.3

*Continued on next page...*

*Continued from previous page...*

Mol	Chain	Res	Type	RSRZ
1	A	145	LEU	2.3
1	C	105	SER	2.3
1	A	173	TYR	2.3
1	A	43	ALA	2.3
1	C	162	GLY	2.3
1	B	62	GLU	2.3
1	B	186	PHE	2.3
1	C	115	ARG	2.3
1	C	179	ILE	2.3
1	B	165	TYR	2.3
1	C	135	LEU	2.3
1	B	65	HIS	2.3
1	C	83	GLU	2.2
1	B	20	GLY	2.2
1	A	19	ARG	2.2
1	A	188	GLY	2.2
1	C	61	TYR	2.2
1	C	18	VAL	2.2
1	B	202	CYS	2.2
1	A	175	PHE	2.2
1	B	190	ARG	2.2
1	C	175	PHE	2.1
1	A	72	GLY	2.1
1	C	107	VAL	2.1
1	B	179	ILE	2.1
1	A	143	MET	2.1
1	C	40	LEU	2.1
1	B	87	ALA	2.1
1	A	179	ILE	2.1
1	B	52	LEU	2.1
1	C	110	LEU	2.1
1	A	66	TRP	2.1
1	A	42	THR	2.1
1	B	152	GLY	2.1
1	B	59	ARG	2.0
1	B	206	PRO	2.0
1	B	43	ALA	2.0
1	A	182	ASP	2.0
1	B	148	THR	2.0
1	B	84	ALA	2.0

## 6.2 Non-standard residues in protein, DNA, RNA chains [i](#)

There are no non-standard protein/DNA/RNA residues in this entry.

## 6.3 Carbohydrates [i](#)

There are no carbohydrates in this entry.

## 6.4 Ligands [i](#)

In the following table, the Atoms column lists the number of modelled atoms in the group and the number defined in the chemical component dictionary. LLDF column lists the quality of electron density of the group with respect to its neighbouring residues in protein, DNA or RNA chains. The B-factors column lists the minimum, median, 95<sup>th</sup> percentile and maximum values of B factors of atoms in the group. The column labelled 'Q< 0.9' lists the number of atoms with occupancy less than 0.9.

Mol	Type	Chain	Res	Atoms	RSCC	RSR	LLDF	B-factors( $\text{\AA}^2$ )	Q<0.9
3	OGA	A	301	10/10	0.89	0.17	-0.72	23,26,32,37	0
3	OGA	C	302	10/10	0.86	0.16	-1.17	29,32,36,39	0
2	MN	A	300	1/1	0.97	0.14	-	21,21,21,21	0
2	MN	C	301	1/1	0.98	0.14	-	25,25,25,25	0
2	MN	B	300	1/1	0.90	0.17	-	27,27,27,27	0
2	MN	C	303	1/1	0.91	0.06	-	37,37,37,37	0

## 6.5 Other polymers [i](#)

There are no such residues in this entry.