



Full wwPDB X-ray Structure Validation Report ⓘ

Feb 1, 2016 – 05:25 AM GMT

PDB ID : 2QMF
Title : Structure of BACE Bound to SCH735310
Authors : Strickland, C.O.; Iserloh, U.
Deposited on : 2007-07-16
Resolution : 1.75 Å(reported)

This is a Full wwPDB X-ray Structure Validation Report for a publicly released PDB entry.
We welcome your comments at validation@mail.wwpdb.org
A user guide is available at
<http://wwpdb.org/validation/2016/XrayValidationReportHelp>
with specific help available everywhere you see the ⓘ symbol.

The following versions of software and data (see [references ⓘ](#)) were used in the production of this report:

MolProbity : 4.02b-467
Mogul : 1.7 (RC4), CSD as536be (2015)
Xtriage (Phenix) : 1.9-1692
EDS : rb-20026688
Percentile statistics : 20151230.v01 (using entries in the PDB archive December 30th 2015)
Refmac : 5.8.0135
CCP4 : 6.5.0
Ideal geometry (proteins) : Engh & Huber (2001)
Ideal geometry (DNA, RNA) : Parkinson et al. (1996)
Validation Pipeline (wwPDB-VP) : trunk26865

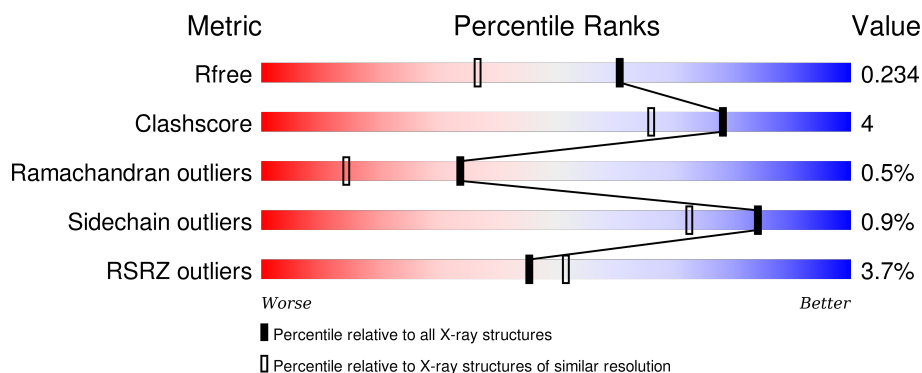
1 Overall quality at a glance

The following experimental techniques were used to determine the structure:

X-RAY DIFFRACTION

The reported resolution of this entry is 1.75 Å.

Percentile scores (ranging between 0-100) for global validation metrics of the entry are shown in the following graphic. The table shows the number of entries on which the scores are based.



Metric	Whole archive (#Entries)	Similar resolution (#Entries, resolution range(Å))
R_{free}	91344	1609 (1.76-1.76)
Clashscore	102246	1730 (1.76-1.76)
Ramachandran outliers	100387	1711 (1.76-1.76)
Sidechain outliers	100360	1711 (1.76-1.76)
RSRZ outliers	91569	1610 (1.76-1.76)

The table below summarises the geometric issues observed across the polymeric chains and their fit to the electron density. The red, orange, yellow and green segments on the lower bar indicate the fraction of residues that contain outliers for ≥ 3 , 2, 1 and 0 types of geometric quality criteria. A grey segment represents the fraction of residues that are not modelled. The numeric value for each fraction is indicated below the corresponding segment, with a dot representing fractions $\leq 5\%$. The upper red bar (where present) indicates the fraction of residues that have poor fit to the electron density. The numeric value is given above the bar.

Mol	Chain	Length	Quality of chain
1	A	395	
1	B	395	

The following table lists non-polymeric compounds, carbohydrate monomers and non-standard residues in protein, DNA, RNA chains that are outliers for geometric or electron-density-fit criteria:

Mol	Type	Chain	Res	Chirality	Geometry	Clashes	Electron density
2	TAR	A	2	X	-	-	X
2	TAR	B	3	X	-	-	X

2 Entry composition [i](#)

There are 4 unique types of molecules in this entry. The entry contains 7184 atoms, of which 0 are hydrogens and 0 are deuteriums.

In the tables below, the ZeroOcc column contains the number of atoms modelled with zero occupancy, the AltConf column contains the number of residues with at least one atom in alternate conformation and the Trace column contains the number of residues modelled with at most 2 atoms.

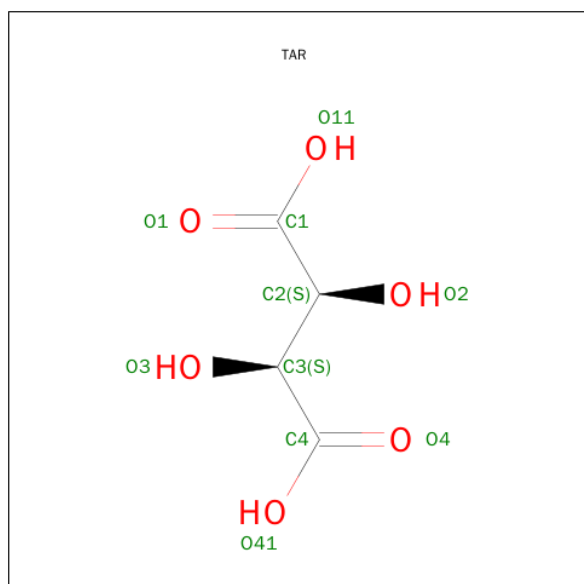
- Molecule 1 is a protein called Beta-secretase 1.

Mol	Chain	Residues	Atoms					ZeroOcc	AltConf	Trace
1	A	390	Total	C	N	O	S	0	0	0
			3060	1959	508	579	14			
1	B	389	Total	C	N	O	S	0	0	0
			3052	1953	507	578	14			

There are 4 discrepancies between the modelled and reference sequences:

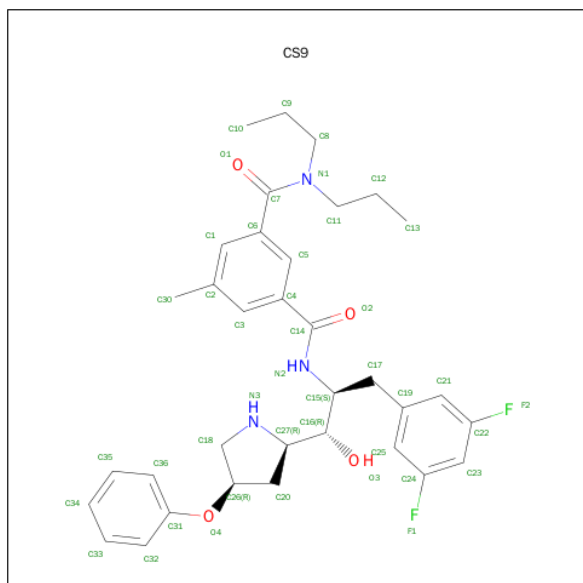
Chain	Residue	Modelled	Actual	Comment	Reference
A	53	ALA	-	EXPRESSION TAG	UNP P56817
A	54	ALA	-	EXPRESSION TAG	UNP P56817
B	53	ALA	-	EXPRESSION TAG	UNP P56817
B	54	ALA	-	EXPRESSION TAG	UNP P56817

- Molecule 2 is D(-)-TARTARIC ACID (three-letter code: TAR) (formula: C₄H₆O₆).



Mol	Chain	Residues	Atoms			ZeroOcc	AltConf
2	A	1	Total	C	O	0	0
			10	4	6		
2	B	1	Total	C	O	0	0
			10	4	6		

- Molecule 3 is N'-{(1S,2R)-1-(3,5-DIFLUOROBENZYL)-2-HYDROXY-2-[(2R,4R)-4-PHE NOXYPYRROLIDIN-2-YL]ETHYL}-5-METHYL-N,N-DIPROPYLISOPHTHALAMIDE (three-letter code: CS9) (formula: C₃₄H₄₁F₂N₃O₄).



Mol	Chain	Residues	Atoms					ZeroOcc	AltConf
3	A	1	Total	C	F	N	O	0	0
			43	34	2	3	4		
3	B	1	Total	C	F	N	O	0	0
			43	34	2	3	4		

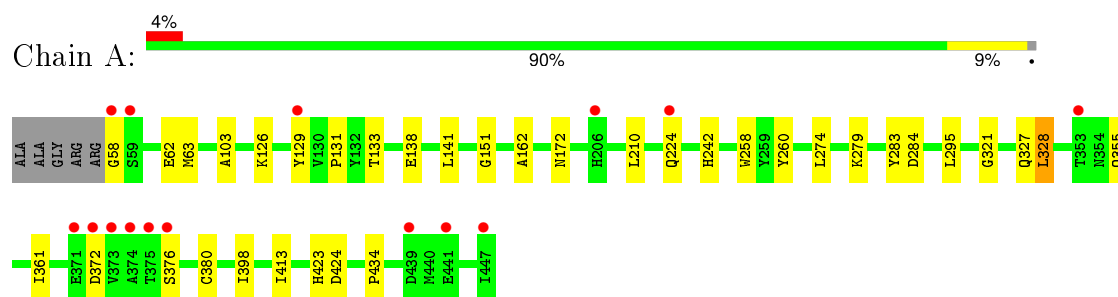
- Molecule 4 is water.

Mol	Chain	Residues	Atoms		ZeroOcc	AltConf
4	B	459	Total	O	0	0
			459	459		
4	A	507	Total	O	0	0
			507	507		

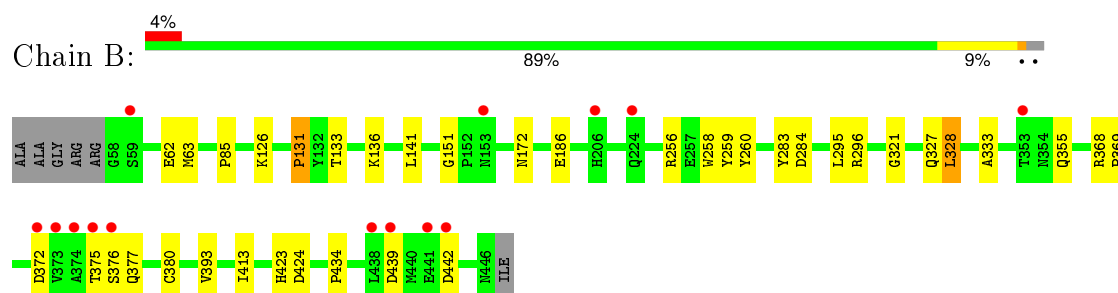
3 Residue-property plots [i](#)

These plots are drawn for all protein, RNA and DNA chains in the entry. The first graphic for a chain summarises the proportions of errors displayed in the second graphic. The second graphic shows the sequence view annotated by issues in geometry and electron density. Residues are color-coded according to the number of geometric quality criteria for which they contain at least one outlier: green = 0, yellow = 1, orange = 2 and red = 3 or more. A red dot above a residue indicates a poor fit to the electron density ($RSRZ > 2$). Stretches of 2 or more consecutive residues without any outlier are shown as a green connector. Residues present in the sample, but not in the model, are shown in grey.

• Molecule 1: Beta-secretase 1



• Molecule 1: Beta-secretase 1



4 Data and refinement statistics

Property	Value	Source
Space group	P 21 21 21	Depositor
Cell constants a, b, c, α , β , γ	86.65Å 89.24Å 130.96Å 90.00° 90.00° 90.00°	Depositor
Resolution (Å)	20.00 – 1.75 19.83 – 1.75	Depositor EDS
% Data completeness (in resolution range)	99.0 (20.00-1.75) 99.3 (19.83-1.75)	Depositor EDS
R_{merge}	0.10	Depositor
R_{sym}	0.10	Depositor
$\langle I/\sigma(I) \rangle$ ¹	2.63 (at 1.76Å)	Xtriage
Refinement program	CNS	Depositor
R, R_{free}	0.209 , 0.239 0.207 , 0.234	Depositor DCC
R_{free} test set	5088 reflections (5.26%)	DCC
Wilson B-factor (Å ²)	14.2	Xtriage
Anisotropy	0.403	Xtriage
Bulk solvent k_{sol} (e/Å ³), B_{sol} (Å ²)	0.38 , 57.5	EDS
Estimated twinning fraction	0.000 for k,h,-l	Xtriage
L-test for twinning ²	$\langle L \rangle = 0.50$, $\langle L^2 \rangle = 0.33$	Xtriage
Outliers	5 of 101846 reflections (0.005%)	Xtriage
F_o, F_c correlation	0.95	EDS
Total number of atoms	7184	wwPDB-VP
Average B, all atoms (Å ²)	18.0	wwPDB-VP

Xtriage's analysis on translational NCS is as follows: *The analyses of the Patterson function reveals a significant off-origin peak that is 55.00 % of the origin peak, indicating pseudo translational symmetry. The chance of finding a peak of this or larger height randomly in a structure without pseudo translational symmetry is equal to 3.3685e-05. The detected translational NCS is most likely also responsible for the elevated intensity ratio.*

¹Intensities estimated from amplitudes.

²Theoretical values of $\langle |L| \rangle$, $\langle L^2 \rangle$ for acentric reflections are 0.5, 0.375 respectively for untwinned datasets, and 0.333, 0.2 for perfectly twinned datasets.

5 Model quality [i](#)

5.1 Standard geometry [i](#)

Bond lengths and bond angles in the following residue types are not validated in this section: CS9, TAR

The Z score for a bond length (or angle) is the number of standard deviations the observed value is removed from the expected value. A bond length (or angle) with $|Z| > 5$ is considered an outlier worth inspection. RMSZ is the root-mean-square of all Z scores of the bond lengths (or angles).

Mol	Chain	Bond lengths		Bond angles	
		RMSZ	$\# Z > 5$	RMSZ	$\# Z > 5$
1	A	0.34	0/3138	0.69	1/4267 (0.0%)
1	B	0.33	0/3130	0.68	2/4256 (0.0%)
All	All	0.33	0/6268	0.69	3/8523 (0.0%)

There are no bond length outliers.

All (3) bond angle outliers are listed below:

Mol	Chain	Res	Type	Atoms	Z	Observed(°)	Ideal(°)
1	A	295	LEU	N-CA-C	-5.47	96.23	111.00
1	B	295	LEU	N-CA-C	-5.42	96.37	111.00
1	B	259	TYR	N-CA-C	-5.18	97.00	111.00

There are no chirality outliers.

There are no planarity outliers.

5.2 Too-close contacts [i](#)

In the following table, the Non-H and H(model) columns list the number of non-hydrogen atoms and hydrogen atoms in the chain respectively. The H(added) column lists the number of hydrogen atoms added and optimized by MolProbity. The Clashes column lists the number of clashes within the asymmetric unit, whereas Symm-Clashes lists symmetry related clashes.

Mol	Chain	Non-H	H(model)	H(added)	Clashes	Symm-Clashes
1	A	3060	0	2970	23	0
1	B	3052	0	2959	21	0
2	A	10	0	4	0	0
2	B	10	0	4	0	0
3	A	43	0	41	1	0
3	B	43	0	41	1	0

Continued on next page...

Continued from previous page...

Mol	Chain	Non-H	H(model)	H(added)	Clashes	Symm-Clashes
4	A	507	0	0	5	0
4	B	459	0	0	2	0
All	All	7184	0	6019	44	0

The all-atom clashscore is defined as the number of clashes found per 1000 atoms (including hydrogen atoms). The all-atom clashscore for this structure is 4.

All (44) close contacts within the same asymmetric unit are listed below, sorted by their clash magnitude.

Atom-1	Atom-2	Interatomic distance (Å)	Clash overlap (Å)
1:A:63:MET:HG2	1:A:151:GLY:HA2	1.70	0.72
1:A:279:LYS:HE3	4:A:711:HOH:O	1.96	0.66
1:A:224:GLN:HG3	4:A:819:HOH:O	1.99	0.61
1:A:361:ILE:HD13	1:A:398:ILE:HD12	1.85	0.59
1:A:62:GLU:HB3	4:A:801:HOH:O	2.08	0.54
1:B:63:MET:HG2	1:B:151:GLY:HA2	1.92	0.52
1:B:131:PRO:HA	1:B:136:LYS:HB3	1.92	0.51
1:A:328:LEU:HD12	1:A:328:LEU:O	2.10	0.50
1:A:126:LYS:HD2	1:A:141:LEU:HD12	1.93	0.50
1:B:321:GLY:C	1:B:327:GLN:HG2	2.33	0.48
1:A:423:HIS:HD2	1:A:424:ASP:O	1.95	0.48
1:B:375:THR:HG22	1:B:375:THR:O	2.13	0.48
1:A:63:MET:CG	1:A:151:GLY:HA2	2.44	0.47
1:A:361:ILE:HD13	1:A:398:ILE:CD1	2.44	0.46
1:B:423:HIS:HD2	1:B:424:ASP:O	1.98	0.46
1:B:62:GLU:CD	1:B:62:GLU:H	2.19	0.46
1:B:372:ASP:HB2	1:B:380:CYS:SG	2.55	0.46
1:A:210:LEU:C	1:A:210:LEU:HD23	2.37	0.46
1:B:260:TYR:HB3	1:B:413:ILE:HD11	1.98	0.45
1:B:126:LYS:HE3	1:B:141:LEU:HD12	1.98	0.45
1:B:126:LYS:HD2	4:B:665:HOH:O	2.16	0.45
1:A:355:GLN:HG3	1:A:434:PRO:HB2	1.99	0.45
1:A:283:TYR:HA	1:A:284:ASP:HA	1.71	0.45
1:A:328:LEU:HD12	1:A:328:LEU:C	2.38	0.44
1:B:355:GLN:CG	1:B:434:PRO:HB2	2.48	0.44
1:B:133:THR:HB	3:B:1:CS9:H3	2.01	0.43
1:B:368:ARG:HA	1:B:369:PRO:HD3	1.89	0.43
1:B:85:PRO:HD2	4:B:769:HOH:O	2.18	0.43
1:B:333:ALA:HB2	1:B:377:GLN:O	2.19	0.42
1:A:260:TYR:HB3	1:A:413:ILE:HD11	2.01	0.42
1:B:186:GLU:CD	1:B:256:ARG:HH12	2.21	0.42

Continued on next page...

Continued from previous page...

Atom-1	Atom-2	Interatomic distance (Å)	Clash overlap (Å)
1:A:321:GLY:C	1:A:327:GLN:HG2	2.39	0.42
1:B:439:ASP:HB3	1:B:442:ASP:OD2	2.20	0.42
1:B:283:TYR:HA	1:B:284:ASP:HA	1.68	0.42
1:B:126:LYS:HE3	1:B:141:LEU:CD1	2.49	0.42
1:B:328:LEU:HD12	1:B:328:LEU:O	2.18	0.42
1:A:372:ASP:HB2	1:A:380:CYS:SG	2.61	0.41
1:A:103:ALA:CB	1:A:162:ALA:HB1	2.50	0.41
1:A:133:THR:HB	3:A:1:CS9:H3	2.02	0.41
1:A:58:GLY:HA3	4:A:591:HOH:O	2.21	0.41
1:A:274:LEU:HA	1:A:274:LEU:HD12	1.93	0.41
1:B:296:ARG:HB2	1:B:393:VAL:HB	2.03	0.40
1:A:242:HIS:HD2	4:A:768:HOH:O	2.04	0.40
1:A:129:TYR:HD1	1:A:138:GLU:HG2	1.86	0.40

There are no symmetry-related clashes.

5.3 Torsion angles ⓘ

5.3.1 Protein backbone ⓘ

In the following table, the Percentiles column shows the percent Ramachandran outliers of the chain as a percentile score with respect to all X-ray entries followed by that with respect to entries of similar resolution.

The Analysed column shows the number of residues for which the backbone conformation was analysed, and the total number of residues.

Mol	Chain	Analysed	Favoured	Allowed	Outliers	Percentiles	
1	A	388/395 (98%)	377 (97%)	9 (2%)	2 (0%)	34	14
1	B	387/395 (98%)	376 (97%)	9 (2%)	2 (0%)	34	14
All	All	775/790 (98%)	753 (97%)	18 (2%)	4 (0%)	34	14

All (4) Ramachandran outliers are listed below:

Mol	Chain	Res	Type
1	B	376	SER
1	A	376	SER
1	A	131	PRO
1	B	131	PRO

5.3.2 Protein sidechains ⓘ

In the following table, the Percentiles column shows the percent sidechain outliers of the chain as a percentile score with respect to all X-ray entries followed by that with respect to entries of similar resolution.

The Analysed column shows the number of residues for which the sidechain conformation was analysed, and the total number of residues.

Mol	Chain	Analysed	Rotameric	Outliers	Percentiles	
1	A	332/334 (99%)	329 (99%)	3 (1%)	84	72
1	B	331/334 (99%)	328 (99%)	3 (1%)	84	72
All	All	663/668 (99%)	657 (99%)	6 (1%)	84	72

All (6) residues with a non-rotameric sidechain are listed below:

Mol	Chain	Res	Type
1	A	172	ASN
1	A	258	TRP
1	A	328	LEU
1	B	172	ASN
1	B	258	TRP
1	B	328	LEU

Some sidechains can be flipped to improve hydrogen bonding and reduce clashes. All (6) such sidechains are listed below:

Mol	Chain	Res	Type
1	A	172	ASN
1	A	355	GLN
1	A	423	HIS
1	B	89	ASN
1	B	172	ASN
1	B	423	HIS

5.3.3 RNA ⓘ

There are no RNA molecules in this entry.

5.4 Non-standard residues in protein, DNA, RNA chains ⓘ

There are no non-standard protein/DNA/RNA residues in this entry.

5.5 Carbohydrates ⓘ

There are no carbohydrates in this entry.

5.6 Ligand geometry ⓘ

4 ligands are modelled in this entry.

In the following table, the Counts columns list the number of bonds (or angles) for which Mogul statistics could be retrieved, the number of bonds (or angles) that are observed in the model and the number of bonds (or angles) that are defined in the chemical component dictionary. The Link column lists molecule types, if any, to which the group is linked. The Z score for a bond length (or angle) is the number of standard deviations the observed value is removed from the expected value. A bond length (or angle) with $|Z| > 2$ is considered an outlier worth inspection. RMSZ is the root-mean-square of all Z scores of the bond lengths (or angles).

Mol	Type	Chain	Res	Link	Bond lengths			Bond angles		
					Counts	RMSZ	# Z > 2	Counts	RMSZ	# Z > 2
3	CS9	A	1	-	44,46,46	1.56	10 (22%)	56,63,63	0.90	2 (3%)
2	TAR	A	2	-	3,9,9	0.45	0	6,12,12	1.29	2 (33%)
3	CS9	B	1	-	44,46,46	1.58	10 (22%)	56,63,63	0.94	2 (3%)
2	TAR	B	3	-	3,9,9	0.42	0	6,12,12	1.46	2 (33%)

In the following table, the Chirals column lists the number of chiral outliers, the number of chiral centers analysed, the number of these observed in the model and the number defined in the chemical component dictionary. Similar counts are reported in the Torsion and Rings columns. '-' means no outliers of that kind were identified.

Mol	Type	Chain	Res	Link	Chirals	Torsions	Rings
3	CS9	A	1	-	-	0/38/47/47	0/4/4/4
2	TAR	A	2	-	2/2/4/4	0/4/12/12	0/0/0/0
3	CS9	B	1	-	-	0/38/47/47	0/4/4/4
2	TAR	B	3	-	2/2/4/4	0/4/12/12	0/0/0/0

All (20) bond length outliers are listed below:

Mol	Chain	Res	Type	Atoms	Z	Observed(Å)	Ideal(Å)
3	B	1	CS9	C25-C19	2.17	1.43	1.39
3	A	1	CS9	C23-C22	2.18	1.41	1.37
3	A	1	CS9	C25-C19	2.19	1.43	1.39
3	B	1	CS9	C23-C24	2.20	1.41	1.37
3	A	1	CS9	C25-C24	2.31	1.41	1.37
3	B	1	CS9	C25-C24	2.32	1.41	1.37

Continued on next page...

Continued from previous page...

Mol	Chain	Res	Type	Atoms	Z	Observed(Å)	Ideal(Å)
3	A	1	CS9	C23-C24	2.37	1.41	1.37
3	A	1	CS9	C3-C4	2.47	1.43	1.39
3	A	1	CS9	C21-C22	2.53	1.42	1.37
3	B	1	CS9	C23-C22	2.54	1.42	1.37
3	A	1	CS9	C5-C6	2.62	1.43	1.39
3	B	1	CS9	C3-C2	2.66	1.43	1.38
3	B	1	CS9	C32-C31	2.66	1.44	1.38
3	B	1	CS9	C3-C4	2.68	1.43	1.39
3	A	1	CS9	C3-C2	2.71	1.43	1.38
3	B	1	CS9	C5-C6	2.73	1.43	1.39
3	A	1	CS9	C32-C31	2.85	1.44	1.38
3	B	1	CS9	C21-C22	2.89	1.42	1.37
3	A	1	CS9	C7-N1	3.16	1.42	1.34
3	B	1	CS9	C7-N1	3.17	1.42	1.34

All (8) bond angle outliers are listed below:

Mol	Chain	Res	Type	Atoms	Z	Observed(°)	Ideal(°)
2	B	3	TAR	C4-C3-C2	-2.67	107.88	113.35
3	B	1	CS9	C17-C15-N2	-2.45	107.46	110.14
3	A	1	CS9	C17-C15-N2	-2.12	107.82	110.14
2	B	3	TAR	C1-C2-C3	-2.12	109.01	113.35
2	A	2	TAR	C4-C3-C2	-2.11	109.02	113.35
2	A	2	TAR	C1-C2-C3	-2.06	109.12	113.35
3	A	1	CS9	C6-C7-N1	2.77	122.45	118.76
3	B	1	CS9	C6-C7-N1	2.77	122.45	118.76

All (4) chirality outliers are listed below:

Mol	Chain	Res	Type	Atom
2	B	3	TAR	C2
2	B	3	TAR	C3
2	A	2	TAR	C2
2	A	2	TAR	C3

There are no torsion outliers.

There are no ring outliers.

2 monomers are involved in 2 short contacts:

Mol	Chain	Res	Type	Clashes	Symm-Clashes
3	A	1	CS9	1	0

Continued on next page...

Continued from previous page...

Mol	Chain	Res	Type	Clashes	Symm-Clashes
3	B	1	CS9	1	0

5.7 Other polymers [i](#)

There are no such residues in this entry.

5.8 Polymer linkage issues [i](#)

There are no chain breaks in this entry.

6 Fit of model and data ⓘ

6.1 Protein, DNA and RNA chains ⓘ

In the following table, the column labelled ‘#RSRZ> 2’ contains the number (and percentage) of RSRZ outliers, followed by percent RSRZ outliers for the chain as percentile scores relative to all X-ray entries and entries of similar resolution. The OWAB column contains the minimum, median, 95th percentile and maximum values of the occupancy-weighted average B-factor per residue. The column labelled ‘Q< 0.9’ lists the number of (and percentage) of residues with an average occupancy less than 0.9.

Mol	Chain	Analysed	<RSRZ>	#RSRZ>2	OWAB(Å ²)	Q<0.9
1	A	390/395 (98%)	0.13	15 (3%) 44 50	8, 14, 31, 64	0
1	B	389/395 (98%)	0.12	14 (3%) 46 52	8, 14, 29, 59	0
All	All	779/790 (98%)	0.13	29 (3%) 45 51	8, 14, 30, 64	0

All (29) RSRZ outliers are listed below:

Mol	Chain	Res	Type	RSRZ
1	B	375	THR	12.2
1	B	373	VAL	10.8
1	A	373	VAL	10.2
1	A	375	THR	8.5
1	A	447	ILE	6.1
1	A	374	ALA	4.4
1	B	441	GLU	4.3
1	B	374	ALA	4.2
1	B	224	GLN	3.6
1	A	441	GLU	3.4
1	A	224	GLN	3.4
1	B	372	ASP	3.4
1	A	353	THR	3.3
1	B	438	LEU	3.2
1	A	376	SER	3.2
1	A	206	HIS	3.0
1	B	206	HIS	3.0
1	A	58	GLY	2.9
1	A	59	SER	2.9
1	B	59	SER	2.7
1	B	353	THR	2.7
1	A	439	ASP	2.7
1	B	376	SER	2.6
1	A	372	ASP	2.6

Continued on next page...

Continued from previous page...

Mol	Chain	Res	Type	RSRZ
1	A	129	TYR	2.3
1	A	371	GLU	2.2
1	B	153	ASN	2.1
1	B	442	ASP	2.1
1	B	439	ASP	2.0

6.2 Non-standard residues in protein, DNA, RNA chains [i](#)

There are no non-standard protein/DNA/RNA residues in this entry.

6.3 Carbohydrates [i](#)

There are no carbohydrates in this entry.

6.4 Ligands [i](#)

In the following table, the Atoms column lists the number of modelled atoms in the group and the number defined in the chemical component dictionary. LLDF column lists the quality of electron density of the group with respect to its neighbouring residues in protein, DNA or RNA chains. The B-factors column lists the minimum, median, 95th percentile and maximum values of B factors of atoms in the group. The column labelled 'Q < 0.9' lists the number of atoms with occupancy less than 0.9.

Mol	Type	Chain	Res	Atoms	RSCC	RSR	LLDF	B-factors(Å ²)	Q<0.9
2	TAR	B	3	10/10	0.93	0.24	4.94	20,26,31,32	0
2	TAR	A	2	10/10	0.83	0.30	4.76	22,29,33,33	0
3	CS9	B	1	43/43	0.95	0.09	-0.20	6,11,16,18	0
3	CS9	A	1	43/43	0.95	0.08	-0.47	6,12,17,19	0

6.5 Other polymers [i](#)

There are no such residues in this entry.