



Full wwPDB X-ray Structure Validation Report ⓘ

Feb 19, 2016 – 07:47 PM GMT

PDB ID : 4QRY
Title : the ground state and the N intermediate of pharaonis halorhodopsin in complex with bromide ion
Authors : Kouyama, T.; Kawaguchi, H.
Deposited on : 2014-07-02
Resolution : 2.20 Å(reported)

This is a Full wwPDB X-ray Structure Validation Report for a publicly released PDB entry.
We welcome your comments at validation@mail.wwpdb.org
A user guide is available at
<http://wwpdb.org/validation/2016/XrayValidationReportHelp>
with specific help available everywhere you see the ⓘ symbol.

The following versions of software and data (see [references ⓘ](#)) were used in the production of this report:

MolProbity : 4.02b-467
Mogul : 1.7.1 (RC1), CSD as537be (2016)
Xtriage (Phenix) : 1.9-1692
EDS : rb-20026982
Percentile statistics : 20151230.v01 (using entries in the PDB archive December 30th 2015)
Refmac : 5.8.0135
CCP4 : 6.5.0
Ideal geometry (proteins) : Engh & Huber (2001)
Ideal geometry (DNA, RNA) : Parkinson et al. (1996)
Validation Pipeline (wwPDB-VP) : rb-20026982

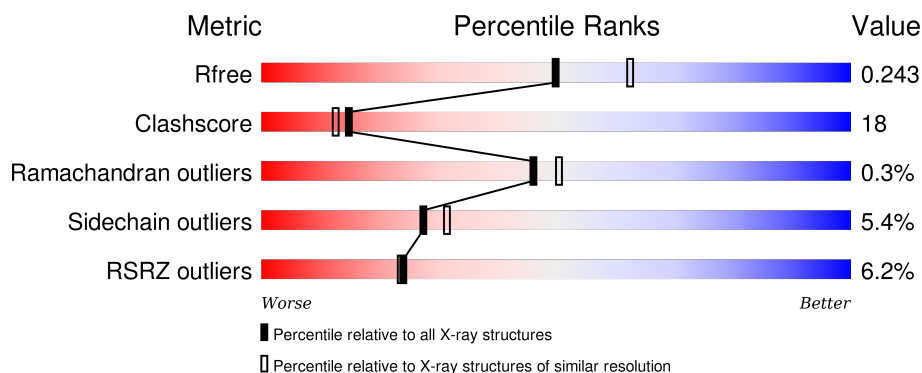
1 Overall quality at a glance

The following experimental techniques were used to determine the structure:

X-RAY DIFFRACTION

The reported resolution of this entry is 2.20 Å.

Percentile scores (ranging between 0-100) for global validation metrics of the entry are shown in the following graphic. The table shows the number of entries on which the scores are based.



Metric	Whole archive (#Entries)	Similar resolution (#Entries, resolution range(Å))
R_{free}	91344	3774 (2.20-2.20)
Clashscore	102246	4477 (2.20-2.20)
Ramachandran outliers	100387	4404 (2.20-2.20)
Sidechain outliers	100360	4405 (2.20-2.20)
RSRZ outliers	91569	3781 (2.20-2.20)

The table below summarises the geometric issues observed across the polymeric chains and their fit to the electron density. The red, orange, yellow and green segments on the lower bar indicate the fraction of residues that contain outliers for ≥ 3 , 2, 1 and 0 types of geometric quality criteria. A grey segment represents the fraction of residues that are not modelled. The numeric value for each fraction is indicated below the corresponding segment, with a dot representing fractions $\leq 5\%$. The upper red bar (where present) indicates the fraction of residues that have poor fit to the electron density. The numeric value is given above the bar.

Mol	Chain	Length	Quality of chain
1	A	291	<div> <div>3%</div> <div>61% 26% 10%</div> </div>
1	B	291	<div> <div>2%</div> <div>62% 24% 11%</div> </div>
1	C	291	<div> <div>7%</div> <div>64% 24% 11%</div> </div>
1	E	291	<div> <div>4%</div> <div>67% 20% 10%</div> </div>
1	F	291	<div> <div>8%</div> <div>58% 29% 11%</div> </div>

Continued on next page...

Continued from previous page...

Mol	Chain	Length	Quality of chain
1	G	291	

The following table lists non-polymeric compounds, carbohydrate monomers and non-standard residues in protein, DNA, RNA chains that are outliers for geometric or electron-density-fit criteria:

Mol	Type	Chain	Res	Chirality	Geometry	Clashes	Electron density
4	BNG	E	302	-	-	-	X
4	BNG	E	303	-	-	-	X
5	L2P	C	304	-	-	-	X
5	L2P	E	304	-	-	-	X
5	L2P	F	301	-	-	-	X
5	L2P	F	302	-	-	-	X
5	L2P	F	303	-	-	-	X
5	L2P	G	301	-	-	-	X

2 Entry composition [i](#)

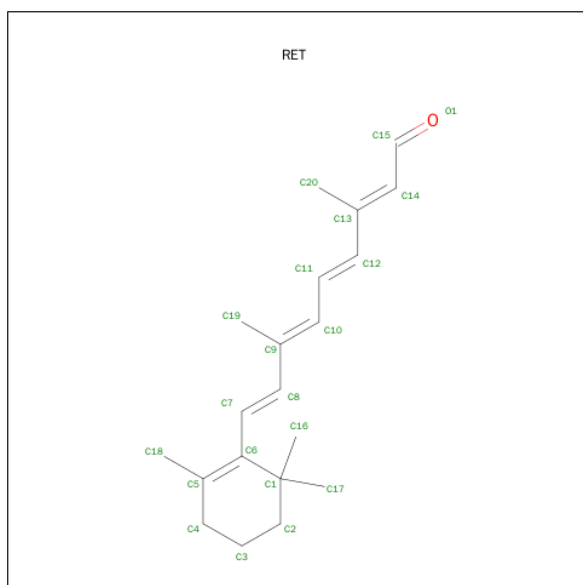
There are 6 unique types of molecules in this entry. The entry contains 12404 atoms, of which 0 are hydrogens and 0 are deuteriums.

In the tables below, the ZeroOcc column contains the number of atoms modelled with zero occupancy, the AltConf column contains the number of residues with at least one atom in alternate conformation and the Trace column contains the number of residues modelled with at most 2 atoms.

- Molecule 1 is a protein called Halorhodopsin.

Mol	Chain	Residues	Atoms					ZeroOcc	AltConf	Trace
1	A	261	Total	C	N	O	S	0	261	0
			1968	1305	300	352	11			
1	B	258	Total	C	N	O	S	0	258	0
			1952	1296	297	348	11			
1	C	259	Total	C	N	O	S	0	259	0
			1957	1299	298	349	11			
1	E	261	Total	C	N	O	S	0	261	0
			1968	1305	300	352	11			
1	F	259	Total	C	N	O	S	0	259	0
			1957	1299	298	349	11			
1	G	259	Total	C	N	O	S	0	259	0
			1957	1299	298	349	11			

- Molecule 2 is RETINAL (three-letter code: RET) (formula: C₂₀H₂₈O).

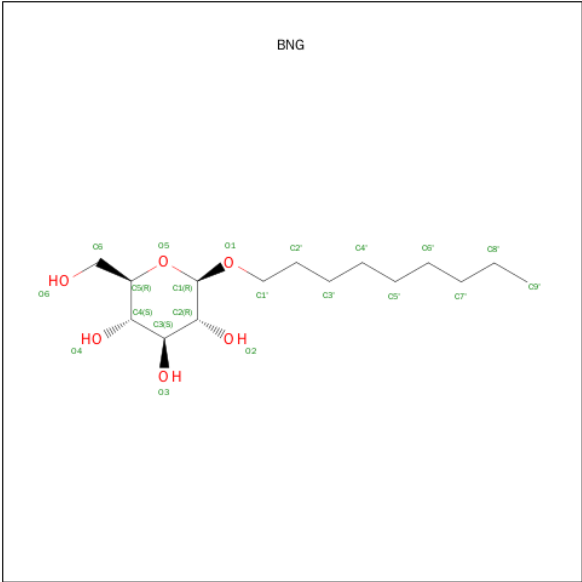


Mol	Chain	Residues	Atoms	ZeroOcc	AltConf
2	A	1	Total C 20 20	0	1
2	B	1	Total C 20 20	0	1
2	C	1	Total C 20 20	0	1
2	E	1	Total C 20 20	0	1
2	F	1	Total C 20 20	0	1
2	G	1	Total C 20 20	0	1

- Molecule 3 is BROMIDE ION (three-letter code: BR) (formula: Br).

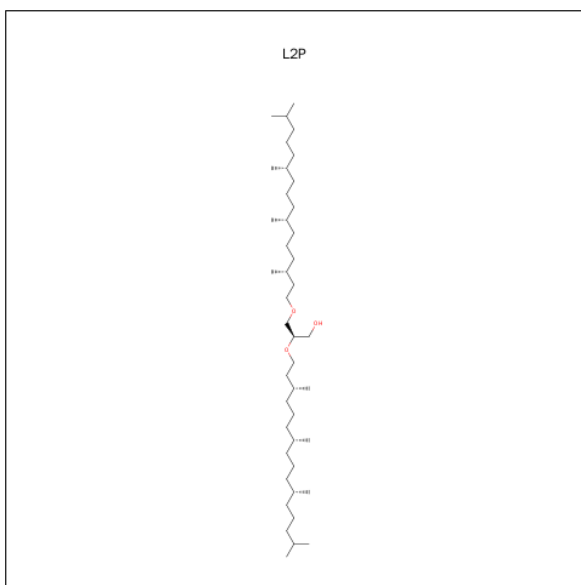
Mol	Chain	Residues	Atoms	ZeroOcc	AltConf
3	G	2	Total Br 2 2	0	2
3	E	1	Total Br 1 1	0	1
3	B	2	Total Br 2 2	0	2
3	C	2	Total Br 2 2	0	2
3	A	2	Total Br 2 2	0	2
3	F	3	Total Br 3 3	0	3

- Molecule 4 is SUGAR (B-NONYLGLUCOSIDE) (three-letter code: BNG) (formula: C₁₅H₃₀O₆).



Mol	Chain	Residues	Atoms			ZeroOcc	AltConf
4	A	1	Total	C	O	0	0
			21	15	6		
4	B	1	Total	C	O	0	0
			21	15	6		
4	E	1	Total	C	O	0	0
			21	15	6		
4	E	1	Total	C	O	0	0
			21	15	6		
4	E	1	Total	C	O	0	0
			21	15	6		

- Molecule 5 is 2,3-DI-PHYTANYL-GLYCEROL (three-letter code: L2P) (formula: C₄₃H₈₈O₃).



Mol	Chain	Residues	Atoms	ZeroOcc	AltConf
5	C	1	Total C 20 20	0	0
5	E	1	Total C 20 20	0	0
5	F	1	Total C 20 20	0	0
5	F	1	Total C 20 20	0	0
5	F	1	Total C 20 20	0	0
5	G	1	Total C 20 20	0	0

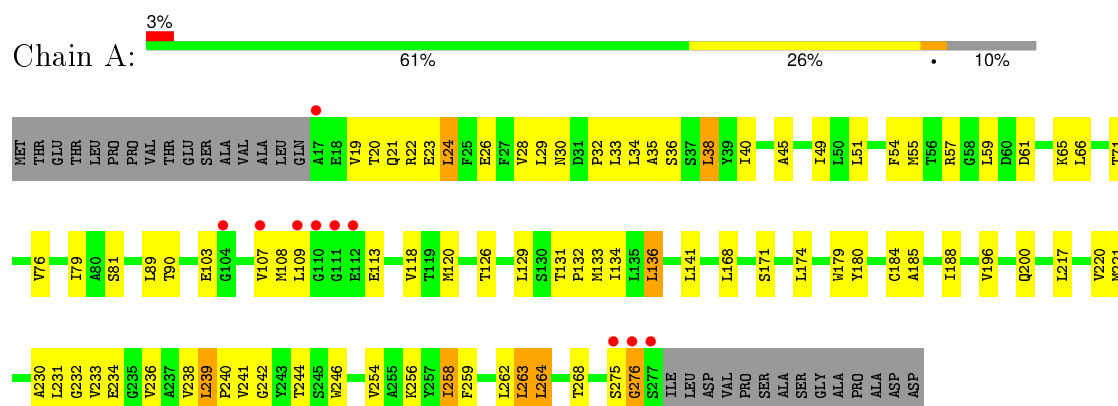
- Molecule 6 is water.

Mol	Chain	Residues	Atoms	ZeroOcc	AltConf
6	A	43	Total O 43 43	0	43
6	B	66	Total O 66 66	0	66
6	C	43	Total O 43 43	0	43
6	E	50	Total O 50 50	0	50
6	F	57	Total O 57 57	0	57
6	G	29	Total O 29 29	0	29

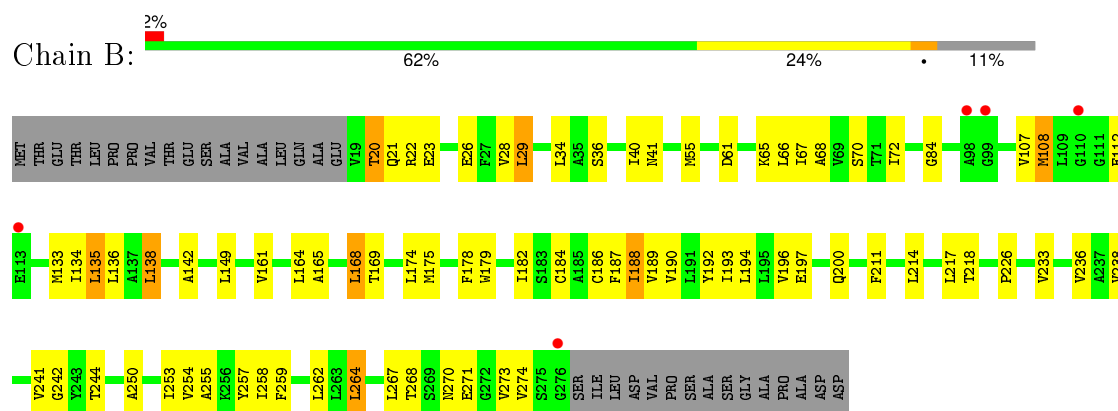
3 Residue-property plots

These plots are drawn for all protein, RNA and DNA chains in the entry. The first graphic for a chain summarises the proportions of errors displayed in the second graphic. The second graphic shows the sequence view annotated by issues in geometry and electron density. Residues are color-coded according to the number of geometric quality criteria for which they contain at least one outlier: green = 0, yellow = 1, orange = 2 and red = 3 or more. A red dot above a residue indicates a poor fit to the electron density ($RSRZ > 2$). Stretches of 2 or more consecutive residues without any outlier are shown as a green connector. Residues present in the sample, but not in the model, are shown in grey.

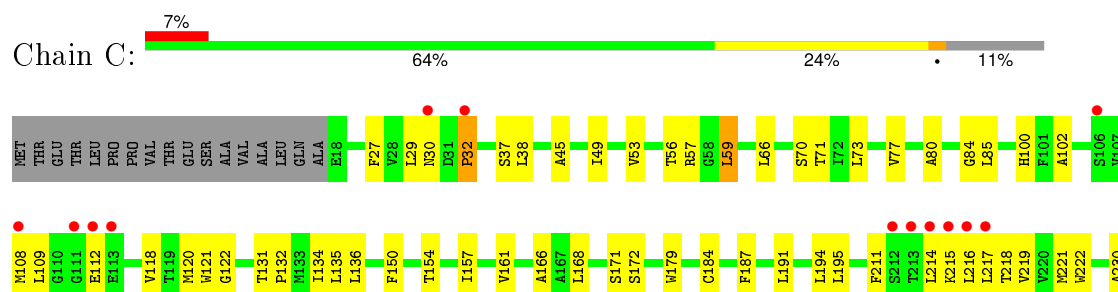
• Molecule 1: Halorhodopsin

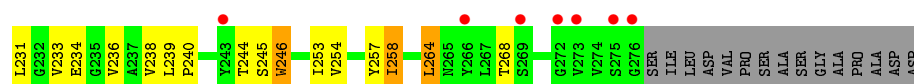


• Molecule 1: Halorhodopsin

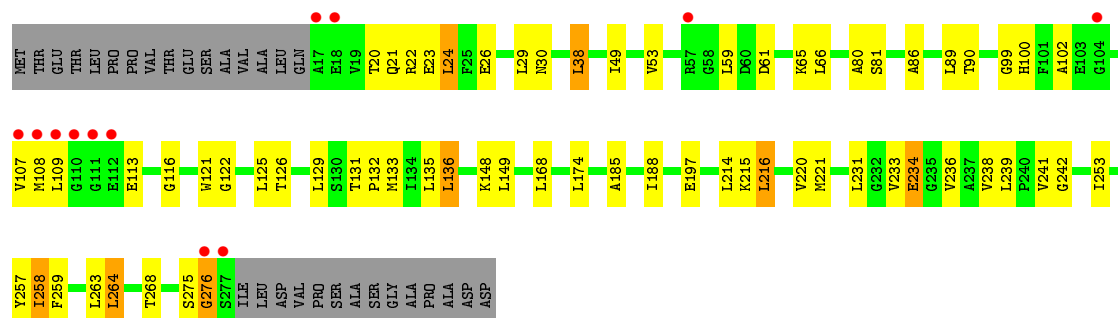


• Molecule 1: Halorhodopsin

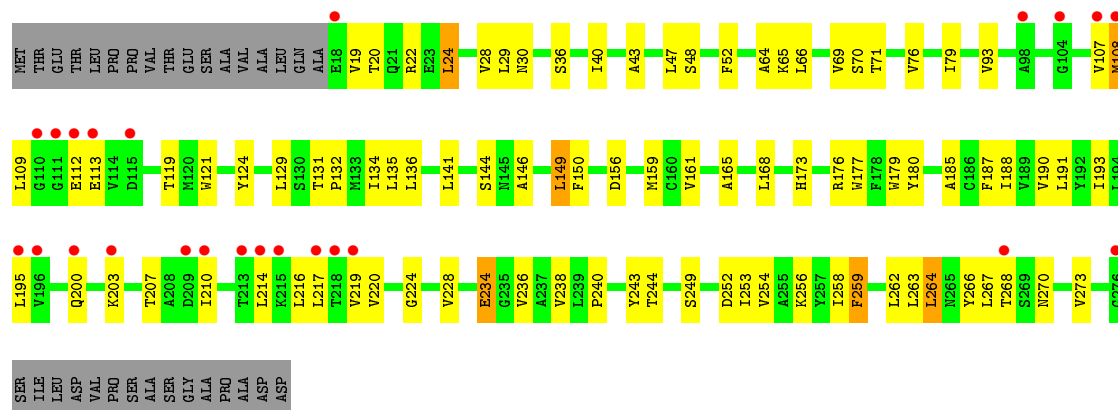




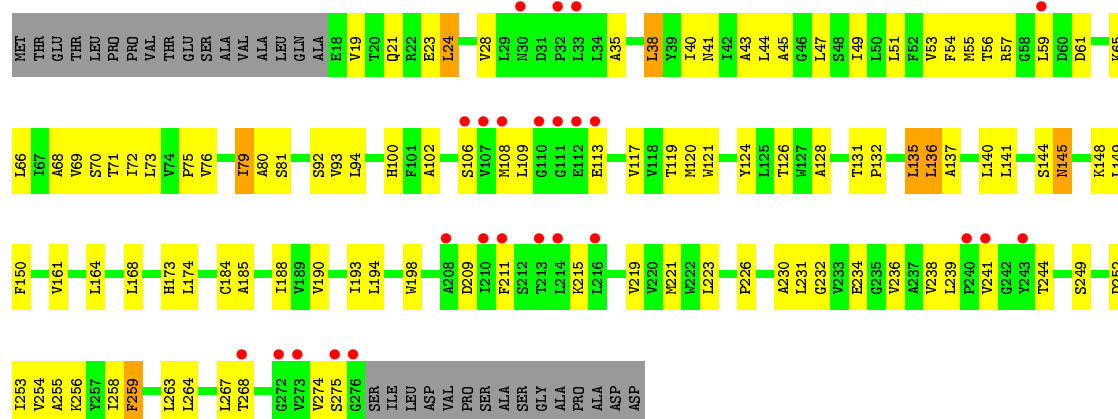
• Molecule 1: Halorhodopsin



• Molecule 1: Halorhodopsin



• Molecule 1: Halorhodopsin



4 Data and refinement statistics

Property	Value	Source
Space group	C 1 2 1	Depositor
Cell constants a, b, c, α , β , γ	153.36 Å 98.30 Å 100.53 Å 90.00° 128.13° 90.00°	Depositor
Resolution (Å)	15.00 – 2.20 49.15 – 2.20	Depositor EDS
% Data completeness (in resolution range)	98.9 (15.00-2.20) 98.8 (49.15-2.20)	Depositor EDS
R_{merge}	0.10	Depositor
R_{sym}	0.10	Depositor
$\langle I/\sigma(I) \rangle$ ¹	2.53 (at 2.20 Å)	Xtriage
Refinement program	CNS 1.21	Depositor
R, R_{free}	0.214 , 0.243 0.216 , 0.243	Depositor DCC
R_{free} test set	2967 reflections (5.05%)	DCC
Wilson B-factor (Å ²)	26.3	Xtriage
Anisotropy	0.188	Xtriage
Bulk solvent k_{sol} (e/Å ³), B_{sol} (Å ²)	0.36 , 71.4	EDS
Estimated twinning fraction	0.008 for -h+k-l,-l,-k 0.000 for -h-k-l,l,k 0.025 for -h-2*l,-k,l	Xtriage
L-test for twinning ²	$\langle L \rangle = 0.49$, $\langle L^2 \rangle = 0.32$	Xtriage
Outliers	2 of 58930 reflections (0.003%)	Xtriage
F_o, F_c correlation	0.93	EDS
Total number of atoms	12404	wwPDB-VP
Average B, all atoms (Å ²)	26.0	wwPDB-VP

Xtriage's analysis on translational NCS is as follows: *The largest off-origin peak in the Patterson function is 5.80% of the height of the origin peak. No significant pseudotranslation is detected.*

¹Intensities estimated from amplitudes.

²Theoretical values of $\langle |L| \rangle$, $\langle L^2 \rangle$ for acentric reflections are 0.5, 0.375 respectively for untwinned datasets, and 0.333, 0.2 for perfectly twinned datasets.

5 Model quality

5.1 Standard geometry

Bond lengths and bond angles in the following residue types are not validated in this section: L2P, BNG, RET, BR

The Z score for a bond length (or angle) is the number of standard deviations the observed value is removed from the expected value. A bond length (or angle) with $|Z| > 5$ is considered an outlier worth inspection. RMSZ is the root-mean-square of all Z scores of the bond lengths (or angles).

Mol	Chain	Bond lengths		Bond angles	
		RMSZ	# Z >5	RMSZ	# Z >5
1	A	0.39	0/2014	0.61	0/2758
1	B	0.43	0/1998	0.65	1/2736 (0.0%)
1	C	0.35	0/2003	0.58	0/2743
1	E	0.37	0/2014	0.56	0/2758
1	F	0.30	0/2003	0.52	0/2743
1	G	0.32	0/2003	0.53	0/2743
All	All	0.36	0/12035	0.58	1/16481 (0.0%)

There are no bond length outliers.

All (1) bond angle outliers are listed below:

Mol	Chain	Res	Type	Atoms	Z	Observed(°)	Ideal(°)
1	B	29[A]	LEU	CA-CB-CG	5.68	128.36	115.30

There are no chirality outliers.

There are no planarity outliers.

5.2 Too-close contacts

In the following table, the Non-H and H(model) columns list the number of non-hydrogen atoms and hydrogen atoms in the chain respectively. The H(added) column lists the number of hydrogen atoms added and optimized by MolProbity. The Clashes column lists the number of clashes within the asymmetric unit, whereas Symm-Clashes lists symmetry related clashes.

Mol	Chain	Non-H	H(model)	H(added)	Clashes	Symm-Clashes
1	A	1968	0	1891	78	0
1	B	1952	0	1815	58	0
1	C	1957	0	1841	50	0
1	E	1968	0	1863	55	0

Continued on next page...

Continued from previous page...

Mol	Chain	Non-H	H(model)	H(added)	Clashes	Symm-Clashes
1	F	1957	0	1831	81	0
1	G	1957	0	1810	99	0
2	A	20	0	25	1	0
2	B	20	0	16	4	0
2	C	20	0	15	0	0
2	E	20	0	26	0	0
2	F	20	0	21	2	0
2	G	20	0	17	1	0
3	A	2	0	0	1	0
3	B	2	0	0	0	0
3	C	2	0	0	0	0
3	E	1	0	0	0	0
3	F	3	0	0	0	0
3	G	2	0	0	0	0
4	A	21	0	30	3	0
4	B	21	0	30	2	0
4	E	63	0	90	5	0
5	C	20	0	39	3	0
5	E	20	0	39	14	0
5	F	60	0	117	22	0
5	G	20	0	39	13	0
6	A	43	0	0	1	0
6	B	66	0	0	6	0
6	C	43	0	0	3	0
6	E	50	0	0	0	0
6	F	57	0	0	2	0
6	G	29	0	0	0	0
All	All	12404	0	11555	420	0

The all-atom clashscore is defined as the number of clashes found per 1000 atoms (including hydrogen atoms). The all-atom clashscore for this structure is 18.

All (420) close contacts within the same asymmetric unit are listed below, sorted by their clash magnitude.

Atom-1	Atom-2	Interatomic distance (Å)	Clash overlap (Å)
1:F:168[B]:LEU:HD23	5:F:303:L2P:C14	1.25	1.65
1:F:168[B]:LEU:CD2	5:F:303:L2P:C14	2.04	1.36
1:F:168[B]:LEU:CD2	5:F:303:L2P:H142	1.73	1.10
1:G:150[B]:PHE:CE2	5:G:301:L2P:H242	1.86	1.10
1:F:168[B]:LEU:HD23	5:F:303:L2P:H143	1.23	1.07
1:E:99[B]:GLY:HA3	4:E:301:BNG:O2	1.55	1.06

Continued on next page...

Continued from previous page...

Atom-1	Atom-2	Interatomic distance (Å)	Clash overlap (Å)
1:G:150[B]:PHE:HE2	5:G:301:L2P:C24	1.76	0.97
1:G:150[B]:PHE:CE2	5:G:301:L2P:C24	2.48	0.96
1:E:238[B]:VAL:HG23	1:E:239[B]:LEU:HD13	1.46	0.95
1:G:254[B]:VAL:HA	1:G:258[B]:ILE:HG22	1.47	0.93
1:E:99[B]:GLY:HA3	4:E:301:BNG:HO2	1.32	0.91
1:F:168[B]:LEU:HD23	5:F:303:L2P:H142	0.93	0.91
1:B:254[A]:VAL:HG13	1:B:258[A]:ILE:HD11	1.52	0.90
1:F:165[B]:ALA:HB2	5:F:303:L2P:H192	1.54	0.89
1:F:165[B]:ALA:HB2	5:F:303:L2P:C19	2.02	0.89
1:F:161[B]:VAL:HG11	5:F:303:L2P:H222	1.53	0.88
5:E:304:L2P:H201	1:G:161[B]:VAL:HG12	1.55	0.88
1:B:20[A]:THR:HG21	6:B:451[A]:HOH:O	1.73	0.86
1:A:20[A]:THR:HG22	1:A:22[A]:ARG:H	1.41	0.86
1:F:254[B]:VAL:HG13	1:F:258[B]:ILE:HD11	1.55	0.85
1:A:238[A]:VAL:HG23	1:A:239[A]:LEU:HD13	1.59	0.85
1:F:200[B]:GLN:HA	1:F:203[B]:LYS:HE2	1.57	0.84
5:C:304:L2P:H191	1:G:168[B]:LEU:HD12	1.59	0.83
1:C:195[A]:LEU:HA	1:C:215[A]:LYS:HD2	1.60	0.83
1:G:185[B]:ALA:O	1:G:188[B]:ILE:HG12	1.79	0.82
1:F:168[B]:LEU:CD2	5:F:303:L2P:H143	1.91	0.81
1:E:100[B]:HIS:HD1	1:E:102[B]:ALA:H	1.28	0.79
5:E:304:L2P:H201	1:G:161[B]:VAL:CG1	2.13	0.79
1:F:161[B]:VAL:CG1	5:F:303:L2P:H222	2.13	0.78
1:B:26[A]:GLU:HG2	4:B:301:BNG:O6	1.85	0.76
1:A:264[A]:LEU:O	1:A:268[A]:THR:HG22	1.85	0.76
1:G:150[B]:PHE:HE2	5:G:301:L2P:H241	1.50	0.76
1:A:22[A]:ARG:HG3	1:A:23[A]:GLU:N	2.01	0.75
1:A:24[A]:LEU:HD13	1:A:109[A]:LEU:HD21	1.67	0.75
1:F:20[B]:THR:HG22	1:F:22[B]:ARG:H	1.53	0.73
1:F:150[B]:PHE:CD2	5:F:302:L2P:H192	2.24	0.73
1:G:19[B]:VAL:HG21	1:G:93[B]:VAL:HG11	1.70	0.72
1:A:254[A]:VAL:HA	1:A:258[A]:ILE:HG12	1.70	0.72
1:E:238[B]:VAL:HG23	1:E:239[B]:LEU:CD1	2.18	0.72
1:G:254[B]:VAL:HA	1:G:258[B]:ILE:CG2	2.17	0.72
1:G:150[B]:PHE:CD2	5:G:301:L2P:H211	2.25	0.72
1:F:150[B]:PHE:HD2	5:F:302:L2P:H192	1.54	0.72
1:A:38[A]:LEU:HD11	1:A:120[A]:MET:HE1	1.71	0.71
1:F:168[B]:LEU:CD2	5:F:303:L2P:H141	2.20	0.70
1:A:20[A]:THR:HG21	1:A:22[A]:ARG:HG2	1.73	0.70
1:G:71[B]:THR:HG21	1:G:264[B]:LEU:HD13	1.73	0.70
1:G:145[B]:ASN:ND2	1:G:148[B]:LYS:H	1.89	0.70

Continued on next page...

Continued from previous page...

Atom-1	Atom-2	Interatomic distance (Å)	Clash overlap (Å)
1:G:150[B]:PHE:CD2	5:G:301:L2P:H242	2.27	0.69
1:G:145[B]:ASN:HD21	1:G:148[B]:LYS:HG3	1.57	0.68
1:A:174[A]:LEU:HD13	4:E:301:BNG:H1'2	1.75	0.68
1:G:145[B]:ASN:HD22	1:G:145[B]:ASN:C	1.97	0.68
1:F:195[B]:LEU:HD21	1:F:219[B]:VAL:HG21	1.75	0.68
1:A:89[A]:LEU:HG	5:E:304:L2P:H141	1.75	0.68
1:B:20[A]:THR:HG22	1:B:23[A]:GLU:N	2.09	0.68
1:F:236[B]:VAL:HG13	1:F:238[B]:VAL:HG13	1.77	0.67
1:G:108[B]:MET:HA	1:G:113[B]:GLU:HA	1.77	0.67
1:A:71[A]:THR:HG21	1:A:264[A]:LEU:HD13	1.76	0.67
1:G:54[B]:PHE:HB3	1:G:57[B]:ARG:NH1	2.10	0.67
1:B:107[A]:VAL:O	1:B:108[A]:MET:HB3	1.93	0.67
1:E:129[B]:LEU:HD13	5:E:304:L2P:H251	1.77	0.66
1:F:270[B]:ASN:O	1:F:273[B]:VAL:HG12	1.95	0.66
1:E:29[B]:LEU:O	1:E:30[B]:ASN:HB2	1.95	0.66
1:G:164[B]:LEU:O	1:G:168[B]:LEU:HD23	1.95	0.66
1:G:108[B]:MET:HB2	1:G:113[B]:GLU:HG3	1.77	0.66
1:A:133[A]:MET:HE1	5:G:301:L2P:H241	1.78	0.66
1:G:76[B]:VAL:HA	1:G:79[B]:ILE:HD11	1.78	0.66
1:E:90[B]:THR:HG22	5:E:304:L2P:H143	1.79	0.65
5:C:304:L2P:H191	1:G:168[B]:LEU:CD1	2.26	0.65
1:F:108[B]:MET:HA	1:F:113[B]:GLU:HA	1.78	0.65
1:A:258[A]:ILE:HG13	1:A:259[A]:PHE:N	2.11	0.65
1:G:252[B]:ASP:O	1:G:256[B]:LYS:HB2	1.97	0.65
1:E:220[B]:VAL:HG12	1:E:221[B]:MET:CE	2.28	0.64
1:F:165[B]:ALA:HB2	5:F:303:L2P:H193	1.78	0.64
1:C:240[A]:PRO:O	1:C:244[A]:THR:HG23	1.98	0.64
1:E:264[B]:LEU:O	1:E:268[B]:THR:HG22	1.98	0.64
1:F:270[B]:ASN:HB3	1:F:273[B]:VAL:HG12	1.80	0.64
1:F:207[B]:THR:HG22	1:F:266[B]:TYR:OH	1.97	0.64
1:G:45[B]:ALA:O	1:G:49[B]:ILE:HG13	1.98	0.64
1:C:100[A]:HIS:HD1	1:C:102[A]:ALA:N	1.95	0.64
1:C:172[A]:SER:HA	6:C:401[A]:HOH:O	1.98	0.64
1:F:254[B]:VAL:HA	1:F:258[B]:ILE:HG12	1.78	0.63
4:B:301:BNG:H4'1	1:E:174[B]:LEU:HD23	1.79	0.63
1:B:108[A]:MET:HA	1:B:112[A]:GLU:O	1.98	0.63
1:G:131[B]:THR:OG1	1:G:132[B]:PRO:HD3	1.99	0.63
1:B:20[A]:THR:HG23	1:B:22[A]:ARG:N	2.14	0.63
1:E:214[B]:LEU:CD1	1:E:263[B]:LEU:HD13	2.29	0.63
1:A:220[A]:VAL:CG1	1:A:221[A]:MET:HE1	2.29	0.63
1:A:220[A]:VAL:HG12	1:A:221[A]:MET:HE1	1.80	0.62

Continued on next page...

Continued from previous page...

Atom-1	Atom-2	Interatomic distance (Å)	Clash overlap (Å)
1:F:119[B]:THR:HG23	1:F:234[B]:GLU:OE1	1.99	0.62
1:E:215[B]:LYS:HE3	1:E:216[B]:LEU:HD13	1.80	0.62
1:C:71[A]:THR:HG21	1:C:264[A]:LEU:HD13	1.81	0.62
1:C:154[A]:THR:HG22	5:E:304:L2P:H303	1.81	0.62
1:A:20[A]:THR:HG22	1:A:21[A]:GLN:N	2.14	0.62
1:A:22[A]:ARG:HG3	1:A:23[A]:GLU:H	1.63	0.62
1:C:233[A]:VAL:HG22	1:C:244[A]:THR:HG21	1.81	0.62
1:E:22[B]:ARG:HG3	1:E:23[B]:GLU:N	2.14	0.62
1:G:94[B]:LEU:HD11	1:G:168[B]:LEU:HD13	1.80	0.62
1:G:43[B]:ALA:O	1:G:47[B]:LEU:HD13	1.99	0.61
1:G:190[B]:VAL:O	1:G:193[B]:ILE:HG13	2.00	0.61
1:E:236[B]:VAL:HG13	1:E:238[B]:VAL:HG13	1.82	0.61
1:A:268[A]:THR:HG23	4:A:304:BNG:O6	2.00	0.61
1:A:90[A]:THR:HG22	5:E:304:L2P:H143	1.82	0.61
1:E:121[B]:TRP:HZ3	1:E:125[B]:LEU:HD22	1.66	0.61
1:F:270[B]:ASN:HB3	1:F:273[B]:VAL:CG1	2.30	0.60
1:G:75[B]:PRO:O	1:G:79[B]:ILE:HG13	2.00	0.60
1:G:23[B]:GLU:HB3	1:G:109[B]:LEU:HB3	1.82	0.60
1:A:131[A]:THR:HA	1:A:134[A]:ILE:HD12	1.83	0.60
1:G:184[B]:CYS:O	1:G:188[B]:ILE:HG23	2.01	0.60
1:C:238[A]:VAL:HG23	1:C:239[A]:LEU:HD13	1.84	0.60
1:A:51[A]:LEU:O	1:A:55[A]:MET:HG3	2.01	0.59
1:G:51[B]:LEU:O	1:G:55[B]:MET:HG3	2.03	0.59
1:G:145[B]:ASN:HD21	1:G:148[B]:LYS:H	1.49	0.59
1:G:193[B]:ILE:HD12	1:G:194[B]:LEU:N	2.17	0.59
1:E:89[B]:LEU:HG	5:E:304:L2P:H141	1.83	0.59
1:C:38[A]:LEU:HD21	1:C:120[A]:MET:HE1	1.85	0.59
1:F:93[B]:VAL:O	1:F:93[B]:VAL:HG13	2.02	0.59
1:G:254[B]:VAL:CA	1:G:258[B]:ILE:HG22	2.26	0.59
1:G:267[B]:LEU:CD1	1:G:274[B]:VAL:HG21	2.33	0.58
1:F:146[B]:ALA:HB1	5:F:302:L2P:H142	1.85	0.58
1:G:100[B]:HIS:CD2	1:G:102[B]:ALA:H	2.22	0.58
1:A:20[A]:THR:CG2	1:A:22[A]:ARG:HG2	2.33	0.57
1:G:65[B]:LYS:O	1:G:69[B]:VAL:HG23	2.03	0.57
1:A:230[A]:ALA:O	1:A:236[A]:VAL:HG12	2.03	0.57
1:E:20[B]:THR:HG22	1:E:21[B]:GLN:N	2.19	0.57
1:G:231[B]:LEU:HB3	1:G:239[B]:LEU:HD13	1.85	0.57
1:E:136[B]:LEU:HD11	5:G:301:L2P:H202	1.87	0.57
1:G:128[B]:ALA:O	1:G:132[B]:PRO:HG2	2.03	0.57
1:A:61[A]:ASP:OD2	1:A:275[A]:SER:HA	2.04	0.57
1:F:240[B]:PRO:O	1:F:244[B]:THR:HG22	2.04	0.57

Continued on next page...

Continued from previous page...

Atom-1	Atom-2	Interatomic distance (Å)	Clash overlap (Å)
1:G:150[B]:PHE:CE2	5:G:301:L2P:H211	2.39	0.57
1:A:20[A]:THR:CG2	1:A:21[A]:GLN:N	2.68	0.57
1:A:81[A]:SER:HB2	1:A:126[A]:THR:HG21	1.87	0.57
1:E:129[B]:LEU:HD22	5:G:301:L2P:H293	1.87	0.57
1:G:100[B]:HIS:HD2	1:G:102[B]:ALA:H	1.53	0.57
1:G:24[B]:LEU:O	1:G:28[B]:VAL:HG23	2.05	0.57
1:C:195[A]:LEU:HD21	1:C:219[A]:VAL:HG22	1.86	0.57
1:A:33[A]:LEU:HD22	1:A:246[A]:TRP:HD1	1.70	0.57
1:E:24[B]:LEU:HD13	1:E:109[B]:LEU:HD21	1.86	0.56
1:C:254[A]:VAL:HA	1:C:258[A]:ILE:HG23	1.87	0.56
1:F:36[B]:SER:O	1:F:40[B]:ILE:HG12	2.05	0.56
1:A:29[A]:LEU:O	1:A:30[A]:ASN:HB2	2.05	0.56
1:G:238[B]:VAL:HG23	1:G:239[B]:LEU:CD1	2.34	0.56
1:A:275[A]:SER:O	1:A:276[A]:GLY:C	2.42	0.56
1:B:55[A]:MET:HE1	1:B:264[A]:LEU:HB3	1.88	0.56
1:B:188[A]:ILE:HG13	1:B:189[A]:VAL:N	2.20	0.56
1:G:219[B]:VAL:O	1:G:223[B]:LEU:HG	2.06	0.56
1:G:40[B]:ILE:O	1:G:44[B]:LEU:HG	2.05	0.56
1:A:217[A]:LEU:HD12	1:A:221[A]:MET:HE3	1.86	0.56
1:G:238[B]:VAL:HG23	1:G:239[B]:LEU:HD13	1.87	0.55
1:E:233[B]:VAL:HG23	1:E:234[B]:GLU:OE1	2.06	0.55
1:A:185[A]:ALA:O	1:A:188[A]:ILE:HG13	2.06	0.55
1:E:108[B]:MET:HA	1:E:113[B]:GLU:HA	1.88	0.55
1:A:232[A]:GLY:HA2	1:A:239[A]:LEU:HB2	1.86	0.55
1:A:38[A]:LEU:HD11	1:A:120[A]:MET:CE	2.35	0.55
1:C:56[A]:THR:HB	1:C:59[A]:LEU:HD22	1.88	0.55
1:C:157[A]:ILE:O	1:C:161[A]:VAL:HG23	2.06	0.55
1:C:161[A]:VAL:HG12	5:E:304:L2P:H201	1.88	0.55
1:B:178[A]:PHE:O	1:B:182[A]:ILE:HG12	2.06	0.55
1:C:211[A]:PHE:O	1:C:215[A]:LYS:HB2	2.07	0.54
1:A:33[A]:LEU:HD22	1:A:246[A]:TRP:CD1	2.42	0.54
1:A:258[A]:ILE:O	1:A:262[A]:LEU:HG	2.08	0.54
1:F:173[B]:HIS:HE2	1:F:177[B]:TRP:HE1	1.54	0.54
1:C:108[A]:MET:O	1:C:109[A]:LEU:HD12	2.07	0.54
1:A:171[A]:SER:HB2	1:B:22[A]:ARG:HA	1.90	0.54
1:F:108[B]:MET:HA	1:F:112[B]:GLU:O	2.08	0.54
1:E:220[B]:VAL:HG12	1:E:221[B]:MET:HE2	1.89	0.54
1:E:185[B]:ALA:O	1:E:188[B]:ILE:HG13	2.08	0.54
1:A:240[A]:PRO:O	1:A:244[A]:THR:HG23	2.08	0.54
1:C:254[A]:VAL:HA	1:C:258[A]:ILE:CG2	2.38	0.54
1:B:270[A]:ASN:HD22	1:B:273[A]:VAL:HG11	1.72	0.54

Continued on next page...

Continued from previous page...

Atom-1	Atom-2	Interatomic distance (Å)	Clash overlap (Å)
1:B:218[A]:THR:HG23	6:B:458[A]:HOH:O	2.07	0.54
1:E:275[B]:SER:O	1:E:276[B]:GLY:C	2.46	0.53
1:F:19[B]:VAL:HG21	1:F:93[B]:VAL:HG11	1.90	0.53
1:F:168[B]:LEU:HD21	5:F:303:L2P:C14	2.28	0.53
1:F:20[B]:THR:HG22	1:F:22[B]:ARG:N	2.21	0.53
1:C:217[A]:LEU:O	1:C:221[A]:MET:HG2	2.08	0.53
1:B:107[A]:VAL:O	1:B:108[A]:MET:CB	2.57	0.53
1:F:131[B]:THR:OG1	1:F:132[B]:PRO:HD3	2.09	0.53
1:G:150[B]:PHE:CE2	5:G:301:L2P:H241	2.31	0.53
1:G:92[B]:SER:O	1:G:119[B]:THR:N	2.42	0.53
1:C:233[A]:VAL:N	1:C:244[A]:THR:HG21	2.23	0.53
1:B:164[A]:LEU:HD11	1:B:168[A]:LEU:HD21	1.90	0.53
1:G:106[B]:SER:HB3	1:G:113[B]:GLU:HG2	1.90	0.53
1:E:253[B]:ILE:O	1:E:258[B]:ILE:HG23	2.08	0.53
1:A:20[A]:THR:HG22	1:A:22[A]:ARG:N	2.17	0.52
1:F:254[B]:VAL:HG13	1:F:258[B]:ILE:CD1	2.34	0.52
1:C:215[A]:LYS:O	1:C:219[A]:VAL:HG23	2.09	0.52
1:A:231[A]:LEU:O	1:A:238[A]:VAL:HG22	2.10	0.52
1:F:217[B]:LEU:C	1:F:217[B]:LEU:HD23	2.29	0.52
1:A:108[A]:MET:HE1	1:A:113[A]:GLU:HB2	1.91	0.52
1:G:76[B]:VAL:O	1:G:79[B]:ILE:HD12	2.10	0.52
1:A:231[A]:LEU:HA	1:A:236[A]:VAL:HG12	1.91	0.52
1:G:137[B]:ALA:HB1	1:G:263[B]:LEU:HD21	1.92	0.52
1:B:226[A]:PRO:HB3	2:B:302[A]:RET:H183	1.92	0.52
1:F:193[B]:ILE:C	1:F:193[B]:ILE:HD12	2.31	0.51
1:B:254[A]:VAL:HG13	1:B:258[A]:ILE:CD1	2.34	0.51
1:E:26[B]:GLU:O	1:E:29[B]:LEU:O	2.29	0.51
1:E:29[B]:LEU:O	1:E:30[B]:ASN:CB	2.56	0.51
1:E:131[B]:THR:OG1	1:E:132[B]:PRO:HD3	2.11	0.51
1:C:136[A]:LEU:HD13	1:C:136[A]:LEU:O	2.10	0.51
1:F:268[B]:THR:HG23	6:F:419[B]:HOH:O	2.11	0.51
1:C:184[A]:CYS:O	1:C:187[A]:PHE:HB3	2.10	0.51
1:A:51[A]:LEU:HD11	4:A:304:BNG:H3'2	1.92	0.51
1:B:169[A]:THR:HG21	1:B:175[A]:MET:HB3	1.93	0.51
1:G:267[B]:LEU:HD11	1:G:274[B]:VAL:HG21	1.93	0.51
1:C:253[A]:ILE:HA	1:C:257[A]:TYR:CD2	2.46	0.51
1:C:264[A]:LEU:O	1:C:268[A]:THR:HG22	2.10	0.50
1:B:268[A]:THR:HG23	6:B:417[A]:HOH:O	2.10	0.50
1:F:156[B]:ASP:O	1:F:159[B]:MET:HB3	2.10	0.50
1:F:252[B]:ASP:O	1:F:256[B]:LYS:HB2	2.11	0.50
1:G:121[B]:TRP:HA	1:G:124[B]:TYR:CD2	2.47	0.50

Continued on next page...

Continued from previous page...

Atom-1	Atom-2	Interatomic distance (Å)	Clash overlap (Å)
1:C:215[A]:LYS:O	1:C:218[A]:THR:HB	2.11	0.50
1:B:67[A]:ILE:HG22	1:B:267[A]:LEU:HD22	1.93	0.50
1:C:29[A]:LEU:O	1:C:30[A]:ASN:HB2	2.12	0.50
1:B:165[A]:ALA:HB2	5:F:303:L2P:H192	1.94	0.50
1:B:214[A]:LEU:HD12	6:B:463[A]:HOH:O	2.12	0.50
1:B:36[A]:SER:O	1:B:40[A]:ILE:HG12	2.12	0.50
1:F:264[B]:LEU:O	1:F:268[B]:THR:HG22	2.11	0.50
1:B:254[A]:VAL:HA	1:B:258[A]:ILE:HG12	1.94	0.49
1:C:195[A]:LEU:CA	1:C:215[A]:LYS:HD2	2.37	0.49
1:A:45[A]:ALA:O	1:A:49[A]:ILE:HG13	2.12	0.49
1:B:264[A]:LEU:O	1:B:268[A]:THR:HG22	2.12	0.49
1:A:129[A]:LEU:HD13	5:E:304:L2P:H251	1.94	0.49
1:G:193[B]:ILE:HD12	1:G:193[B]:ILE:C	2.33	0.49
1:F:249[B]:SER:O	1:F:253[B]:ILE:HG13	2.12	0.49
1:C:231[A]:LEU:O	1:C:238[A]:VAL:HG22	2.12	0.49
1:G:41[B]:ASN:HD22	1:G:44[B]:LEU:HD12	1.77	0.49
1:F:121[B]:TRP:HA	1:F:124[B]:TYR:CD2	2.47	0.49
1:G:41[B]:ASN:ND2	1:G:44[B]:LEU:HD12	2.27	0.49
1:G:61[B]:ASP:OD2	1:G:275[B]:SER:HA	2.12	0.49
1:B:22[A]:ARG:HD3	6:B:464[A]:HOH:O	2.13	0.49
1:B:270[A]:ASN:HD22	1:B:273[A]:VAL:CG1	2.26	0.49
1:E:61[B]:ASP:O	1:E:65[B]:LYS:HG3	2.13	0.49
1:E:20[B]:THR:HG21	1:E:22[B]:ARG:NH1	2.28	0.49
1:G:100[B]:HIS:HD1	1:G:173[B]:HIS:HD2	1.58	0.49
1:C:37[A]:SER:HB3	1:C:246[A]:TRP:CD1	2.48	0.49
4:E:302:BNG:H5'2	1:G:174[B]:LEU:HD23	1.94	0.49
1:F:214[B]:LEU:CD1	1:F:263[B]:LEU:HD13	2.43	0.48
1:B:186[A]:CYS:O	1:B:190[A]:VAL:HG23	2.12	0.48
1:A:54[A]:PHE:O	1:A:57[A]:ARG:NH1	2.42	0.48
1:A:28[A]:VAL:O	1:A:35[A]:ALA:HB2	2.12	0.48
1:A:103[A]:GLU:O	1:A:103[A]:GLU:HG3	2.14	0.48
5:E:304:L2P:H222	1:G:161[B]:VAL:HG11	1.96	0.48
1:G:168[B]:LEU:HD22	1:G:168[B]:LEU:N	2.28	0.48
1:F:107[B]:VAL:O	1:F:108[B]:MET:HB2	2.12	0.48
1:B:250[A]:ALA:O	1:B:254[A]:VAL:HG23	2.13	0.48
1:B:236[A]:VAL:HG13	1:B:238[A]:VAL:HG13	1.95	0.48
1:A:81[A]:SER:CB	1:A:126[A]:THR:HG21	2.43	0.48
1:G:28[B]:VAL:O	1:G:35[B]:ALA:HB2	2.14	0.48
5:E:304:L2P:H222	1:G:161[B]:VAL:CG1	2.44	0.47
1:G:19[B]:VAL:HG12	1:G:24[B]:LEU:HD22	1.96	0.47
1:E:49[B]:ILE:O	1:E:53[B]:VAL:HG23	2.14	0.47

Continued on next page...

Continued from previous page...

Atom-1	Atom-2	Interatomic distance (Å)	Clash overlap (Å)
1:B:161[A]:VAL:HG11	5:F:303:L2P:H222	1.96	0.47
1:C:245[A]:SER:HB2	6:C:412[A]:HOH:O	2.13	0.47
1:C:234[A]:GLU:HB2	6:C:411[A]:HOH:O	2.13	0.47
1:G:145[B]:ASN:ND2	1:G:145[B]:ASN:C	2.67	0.47
1:A:236[A]:VAL:HG13	1:A:238[A]:VAL:HG13	1.97	0.47
1:G:109[B]:LEU:N	1:G:109[B]:LEU:HD22	2.29	0.47
1:B:134[A]:ILE:O	1:B:138[A]:LEU:HD22	2.14	0.47
1:B:258[A]:ILE:HG13	1:B:259[A]:PHE:N	2.28	0.47
1:F:259[B]:PHE:CD1	1:F:259[B]:PHE:C	2.88	0.47
1:C:27[A]:PHE:CE1	1:C:118[A]:VAL:HG21	2.50	0.47
1:E:215[B]:LYS:HE3	1:E:216[B]:LEU:CD1	2.46	0.47
1:F:71[B]:THR:HG21	1:F:264[B]:LEU:HD13	1.96	0.47
1:E:20[B]:THR:CG2	1:E:21[B]:GLN:N	2.77	0.46
1:B:255[A]:ALA:HB1	2:B:302[A]:RET:H14	1.96	0.46
1:G:141[B]:LEU:HD22	1:G:263[B]:LEU:CD1	2.44	0.46
1:B:254[A]:VAL:O	1:B:258[A]:ILE:HG12	2.15	0.46
1:E:80[B]:ALA:HB1	5:E:304:L2P:H211	1.98	0.46
1:E:23[B]:GLU:HB3	1:E:109[B]:LEU:HG	1.98	0.46
1:G:79[B]:ILE:H	1:G:79[B]:ILE:HG13	1.47	0.46
1:F:28[B]:VAL:C	1:F:29[B]:LEU:O	2.54	0.46
1:E:20[B]:THR:N	1:E:23[B]:GLU:OE1	2.48	0.46
1:C:53[A]:VAL:O	1:C:57[A]:ARG:HG3	2.15	0.46
1:B:68[A]:ALA:O	1:B:72[A]:ILE:HG13	2.15	0.46
1:C:73[A]:LEU:O	1:C:77[A]:VAL:HG23	2.15	0.46
1:A:256[A]:LYS:HE2	3:A:302[A]:BR:BR	2.71	0.46
1:A:264[A]:LEU:O	1:A:268[A]:THR:CG2	2.62	0.46
1:B:193[A]:ILE:HA	1:B:197[A]:GLU:CG	2.46	0.46
1:B:174[A]:LEU:O	1:B:174[A]:LEU:HD13	2.16	0.46
1:B:241[A]:VAL:HG13	1:B:242[A]:GLY:N	2.32	0.45
1:G:131[B]:THR:O	1:G:135[B]:LEU:HD22	2.17	0.45
1:E:238[B]:VAL:CG2	1:E:239[B]:LEU:HD13	2.33	0.45
1:A:238[A]:VAL:HG23	1:A:239[A]:LEU:CD1	2.41	0.45
1:G:254[B]:VAL:O	1:G:258[B]:ILE:HG22	2.16	0.45
1:E:38[B]:LEU:HD23	1:E:86[B]:ALA:HA	1.99	0.45
5:F:303:L2P:H242	1:G:80[B]:ALA:CB	2.46	0.45
1:C:121[A]:TRP:CH2	5:C:304:L2P:H222	2.52	0.45
1:B:61[A]:ASP:O	1:B:65[A]:LYS:HG3	2.16	0.45
1:F:70[B]:SER:CB	1:F:136[B]:LEU:HD12	2.47	0.45
1:A:241[A]:VAL:HG13	1:A:242[A]:GLY:N	2.31	0.45
1:A:239[A]:LEU:HB3	1:A:244[A]:THR:HG22	1.98	0.44
1:A:136[A]:LEU:HD22	1:A:136[A]:LEU:O	2.16	0.44

Continued on next page...

Continued from previous page...

Atom-1	Atom-2	Interatomic distance (Å)	Clash overlap (Å)
1:B:28[A]:VAL:C	1:B:29[A]:LEU:O	2.50	0.44
1:B:142[A]:ALA:HB2	1:B:211[A]:PHE:CZ	2.52	0.44
1:G:264[B]:LEU:O	1:G:268[B]:THR:HG23	2.17	0.44
1:A:196[A]:VAL:O	1:A:200[A]:GLN:HG2	2.18	0.44
1:G:232[B]:GLY:CA	1:G:244[B]:THR:HG21	2.47	0.44
1:G:249[B]:SER:O	1:G:253[B]:ILE:HG13	2.17	0.44
1:E:107[B]:VAL:HG13	1:E:116[B]:GLY:O	2.17	0.44
1:C:230[A]:ALA:O	1:C:236[A]:VAL:HG22	2.18	0.44
4:A:304:BNG:O6	1:E:268[B]:THR:HG23	2.17	0.44
1:E:220[B]:VAL:HG12	1:E:221[B]:MET:HE1	1.98	0.44
1:A:217[A]:LEU:HD12	1:A:221[A]:MET:CE	2.48	0.44
1:B:271[A]:GLU:O	1:B:274[A]:VAL:HG22	2.17	0.44
1:F:43[B]:ALA:O	1:F:47[B]:LEU:HG	2.17	0.44
1:A:30[A]:ASN:O	1:A:32[A]:PRO:HD3	2.17	0.44
1:E:253[B]:ILE:HA	1:E:257[B]:TYR:CD2	2.53	0.44
1:B:214[A]:LEU:HD21	1:B:262[A]:LEU:HD13	2.00	0.44
1:C:131[A]:THR:OG1	1:C:132[A]:PRO:HD3	2.18	0.44
1:F:134[B]:ILE:HG23	1:F:259[B]:PHE:CZ	2.52	0.44
1:F:108[B]:MET:HG2	1:F:113[B]:GLU:HA	1.99	0.44
1:E:231[B]:LEU:O	1:E:238[B]:VAL:HG22	2.18	0.44
1:E:90[B]:THR:HB	1:E:122[B]:GLY:CA	2.48	0.43
1:G:226[B]:PRO:HA	2:G:302[B]:RET:H172	2.00	0.43
1:E:81[B]:SER:HB2	1:E:126[B]:THR:HG21	2.00	0.43
1:B:165[A]:ALA:HB2	5:F:303:L2P:C19	2.48	0.43
1:A:22[A]:ARG:HG2	1:A:22[A]:ARG:NH1	2.33	0.43
1:F:141[B]:LEU:HD22	1:F:263[B]:LEU:CD1	2.48	0.43
1:F:29[B]:LEU:O	1:F:30[B]:ASN:HB2	2.18	0.43
1:F:109[B]:LEU:HD22	1:F:109[B]:LEU:N	2.33	0.43
1:B:233[A]:VAL:HG22	1:B:244[A]:THR:HG21	2.00	0.43
1:F:19[B]:VAL:HG11	1:F:24[B]:LEU:HD13	1.99	0.43
1:G:38[B]:LEU:HD21	1:G:120[B]:MET:HE3	2.00	0.43
1:A:233[A]:VAL:N	1:A:244[A]:THR:HG21	2.34	0.43
1:C:218[A]:THR:HG23	1:C:222[A]:TRP:CD1	2.53	0.43
1:G:49[B]:ILE:O	1:G:53[B]:VAL:HG23	2.18	0.43
1:B:164[A]:LEU:O	1:B:168[A]:LEU:HD22	2.19	0.43
1:F:70[B]:SER:OG	1:F:136[B]:LEU:HD12	2.19	0.43
2:F:305[B]:RET:H7	2:F:305[B]:RET:H181	1.82	0.43
1:A:234[A]:GLU:HG2	6:A:511[A]:HOH:O	2.19	0.43
1:C:70[A]:SER:OG	1:C:136[A]:LEU:HD12	2.19	0.43
1:F:64[B]:ALA:O	1:F:267[B]:LEU:HD21	2.19	0.43
1:E:241[B]:VAL:HG13	1:E:242[B]:GLY:N	2.33	0.43

Continued on next page...

Continued from previous page...

Atom-1	Atom-2	Interatomic distance (Å)	Clash overlap (Å)
1:B:179[A]:TRP:HZ2	1:C:84[A]:GLY:HA2	1.83	0.43
1:B:135[A]:LEU:HA	1:B:135[A]:LEU:HD12	1.89	0.43
1:G:198[B]:TRP:HB3	1:G:211[B]:PHE:CZ	2.53	0.43
1:C:80[A]:ALA:HB1	5:F:303:L2P:H242	2.01	0.43
1:A:184[A]:CYS:O	1:A:188[A]:ILE:HG23	2.19	0.43
1:G:81[B]:SER:CB	1:G:126[B]:THR:HG21	2.49	0.43
1:F:224[B]:GLY:O	1:F:228[B]:VAL:HG23	2.18	0.43
2:B:302[A]:RET:H181	2:B:302[A]:RET:H7	1.76	0.43
1:F:129[B]:LEU:HA	5:F:301:L2P:C30	2.49	0.43
1:C:191[A]:LEU:O	1:C:195[A]:LEU:HB2	2.19	0.43
1:B:164[A]:LEU:CD1	1:B:168[A]:LEU:HD21	2.48	0.43
1:A:76[A]:VAL:O	1:A:79[A]:ILE:HG22	2.18	0.43
1:A:19[A]:VAL:O	1:A:19[A]:VAL:HG23	2.17	0.42
1:F:136[B]:LEU:HD13	1:F:136[B]:LEU:C	2.38	0.42
1:F:185[B]:ALA:O	1:F:188[B]:ILE:HG12	2.19	0.42
1:G:267[B]:LEU:HD12	1:G:274[B]:VAL:HG21	2.02	0.42
1:F:76[B]:VAL:O	1:F:79[B]:ILE:HG22	2.19	0.42
1:F:210[B]:ILE:HG21	1:F:266[B]:TYR:CE2	2.54	0.42
1:B:241[A]:VAL:HG11	6:B:453[A]:HOH:O	2.19	0.42
1:G:119[B]:THR:HG23	1:G:234[B]:GLU:OE1	2.20	0.42
1:A:107[A]:VAL:HG11	1:A:118[A]:VAL:HG23	2.01	0.42
1:E:133[B]:MET:HE1	5:G:301:L2P:H241	2.01	0.42
1:G:56[B]:THR:HA	1:G:59[B]:LEU:HD23	2.01	0.42
1:F:216[B]:LEU:O	1:F:220[B]:VAL:HG23	2.19	0.42
1:A:34[A]:LEU:HA	1:A:34[A]:LEU:HD12	1.91	0.42
1:G:72[B]:ILE:O	1:G:76[B]:VAL:HG23	2.20	0.42
1:F:190[B]:VAL:O	1:F:193[B]:ILE:HG13	2.20	0.42
1:F:187[B]:PHE:O	1:F:191[B]:LEU:HG	2.19	0.42
1:B:20[A]:THR:HG23	1:B:21[A]:GLN:N	2.35	0.42
1:A:180[A]:TYR:CD2	2:A:301[A]:RET:H32	2.54	0.42
1:F:179[B]:TRP:HH2	1:G:80[B]:ALA:O	2.02	0.42
1:F:22[B]:ARG:NH1	6:F:402[B]:HOH:O	2.52	0.42
1:G:93[B]:VAL:HA	1:G:117[B]:VAL:O	2.20	0.42
1:G:144[B]:SER:OG	1:G:148[B]:LYS:HB2	2.20	0.42
1:F:240[B]:PRO:HD2	1:F:243[B]:TYR:HB2	2.02	0.42
1:F:19[B]:VAL:CG2	1:F:93[B]:VAL:HG11	2.49	0.42
1:C:166[A]:ALA:HB2	1:C:179[A]:TRP:HB3	2.02	0.42
1:G:221[B]:MET:HB3	1:G:255[B]:ALA:HB2	2.02	0.42
1:F:258[B]:ILE:HG13	1:F:259[B]:PHE:N	2.34	0.41
1:F:24[B]:LEU:HA	1:F:24[B]:LEU:HD12	1.86	0.41
1:G:211[B]:PHE:O	1:G:215[B]:LYS:HB2	2.20	0.41

Continued on next page...

Continued from previous page...

Atom-1	Atom-2	Interatomic distance (Å)	Clash overlap (Å)
1:C:85[A]:LEU:HD21	1:C:122[A]:GLY:HA3	2.01	0.41
1:B:253[A]:ILE:HA	1:B:257[A]:TYR:CD2	2.54	0.41
1:A:19[A]:VAL:HB	1:A:109[A]:LEU:HD23	2.01	0.41
1:G:108[B]:MET:CA	1:G:113[B]:GLU:HA	2.48	0.41
1:A:200[A]:GLN:OE1	1:A:200[A]:GLN:HA	2.21	0.41
1:B:184[A]:CYS:O	1:B:187[A]:PHE:HB3	2.19	0.41
1:E:148[B]:LYS:HD3	1:E:197[B]:GLU:HB3	2.02	0.41
1:G:68[B]:ALA:O	1:G:72[B]:ILE:HG13	2.20	0.41
1:A:26[A]:GLU:O	1:A:29[A]:LEU:O	2.39	0.41
1:F:144[B]:SER:OG	1:F:149[B]:LEU:HD22	2.21	0.41
1:B:70[A]:SER:O	1:B:133[A]:MET:HB3	2.20	0.41
1:C:195[A]:LEU:O	1:C:215[A]:LYS:HD2	2.20	0.41
1:A:22[A]:ARG:HA	1:C:171[A]:SER:HB2	2.03	0.41
1:A:38[A]:LEU:HD21	1:A:120[A]:MET:HE1	2.01	0.41
1:A:131[A]:THR:N	1:A:132[A]:PRO:CD	2.84	0.41
1:B:192[A]:TYR:O	1:B:196[A]:VAL:HB	2.21	0.41
1:G:70[B]:SER:HA	1:G:73[B]:LEU:HD12	2.02	0.41
1:A:61[A]:ASP:O	1:A:65[A]:LYS:HG3	2.20	0.41
1:G:136[B]:LEU:HD22	1:G:140[B]:LEU:CD1	2.50	0.41
5:E:304:L2P:H301	5:G:301:L2P:H292	2.03	0.41
1:F:258[B]:ILE:O	1:F:262[B]:LEU:HG	2.20	0.41
1:A:38[A]:LEU:CD1	1:A:120[A]:MET:HE1	2.47	0.41
1:G:106[B]:SER:HB3	1:G:113[B]:GLU:CG	2.51	0.41
1:F:176[B]:ARG:HH22	1:F:234[B]:GLU:HG3	1.86	0.41
1:C:38[A]:LEU:HD21	1:C:120[A]:MET:CE	2.48	0.41
1:G:100[B]:HIS:HD1	1:G:173[B]:HIS:CD2	2.38	0.41
1:B:193[A]:ILE:HD12	1:B:193[A]:ILE:C	2.40	0.41
1:G:241[B]:VAL:HA	1:G:244[B]:THR:OG1	2.21	0.41
1:F:180[B]:TYR:CD2	2:F:305[B]:RET:H32	2.56	0.41
1:A:141[A]:LEU:HD22	1:A:263[A]:LEU:HD13	2.02	0.41
1:G:230[B]:ALA:O	1:G:236[B]:VAL:HG12	2.21	0.41
1:E:131[B]:THR:N	1:E:132[B]:PRO:CD	2.84	0.41
1:A:179[A]:TRP:HZ2	1:B:84[A]:GLY:HA2	1.86	0.41
2:B:302[A]:RET:H191	2:B:302[A]:RET:H11	1.95	0.40
1:A:36[A]:SER:O	1:A:40[A]:ILE:HG12	2.21	0.40
1:C:214[A]:LEU:O	1:C:218[A]:THR:N	2.54	0.40
1:C:45[A]:ALA:O	1:C:49[A]:ILE:HG13	2.20	0.40
1:G:259[B]:PHE:CD1	1:G:259[B]:PHE:C	2.95	0.40
1:F:48[B]:SER:HB3	1:F:52[B]:PHE:CE2	2.57	0.40
1:E:99[B]:GLY:CA	4:E:301:BNG:HO2	2.18	0.40
1:E:215[B]:LYS:CE	1:E:216[B]:LEU:HD13	2.51	0.40

Continued on next page...

Continued from previous page...

Atom-1	Atom-2	Interatomic distance (Å)	Clash overlap (Å)
1:E:61[B]:ASP:OD2	1:E:275[B]:SER:HA	2.21	0.40
1:E:258[B]:ILE:HG13	1:E:259[B]:PHE:N	2.35	0.40
1:C:49[A]:ILE:O	1:C:53[A]:VAL:HG23	2.22	0.40
1:F:65[B]:LYS:O	1:F:69[B]:VAL:HG23	2.21	0.40

There are no symmetry-related clashes.

5.3 Torsion angles [i](#)

5.3.1 Protein backbone [i](#)

In the following table, the Percentiles column shows the percent Ramachandran outliers of the chain as a percentile score with respect to all X-ray entries followed by that with respect to entries of similar resolution.

The Analysed column shows the number of residues for which the backbone conformation was analysed, and the total number of residues.

Mol	Chain	Analysed	Favoured	Allowed	Outliers	Percentiles	
1	A	259/291 (89%)	251 (97%)	7 (3%)	1 (0%)	39	42
1	B	256/291 (88%)	247 (96%)	8 (3%)	1 (0%)	39	42
1	C	257/291 (88%)	246 (96%)	10 (4%)	1 (0%)	39	42
1	E	259/291 (89%)	250 (96%)	8 (3%)	1 (0%)	39	42
1	F	257/291 (88%)	247 (96%)	10 (4%)	0	100	100
1	G	257/291 (88%)	249 (97%)	7 (3%)	1 (0%)	39	42
All	All	1545/1746 (88%)	1490 (96%)	50 (3%)	5 (0%)	46	50

All (5) Ramachandran outliers are listed below:

Mol	Chain	Res	Type
1	A	276[A]	GLY
1	E	276[B]	GLY
1	B	108[A]	MET
1	G	209[B]	ASP
1	C	32[A]	PRO

5.3.2 Protein sidechains ⓘ

In the following table, the Percentiles column shows the percent sidechain outliers of the chain as a percentile score with respect to all X-ray entries followed by that with respect to entries of similar resolution.

The Analysed column shows the number of residues for which the sidechain conformation was analysed, and the total number of residues.

Mol	Chain	Analysed	Rotameric	Outliers	Percentiles	
1	A	208/233 (89%)	198 (95%)	10 (5%)	31	37
1	B	207/233 (89%)	193 (93%)	14 (7%)	20	21
1	C	207/233 (89%)	194 (94%)	13 (6%)	22	24
1	E	208/233 (89%)	196 (94%)	12 (6%)	25	28
1	F	207/233 (89%)	199 (96%)	8 (4%)	39	48
1	G	207/233 (89%)	197 (95%)	10 (5%)	31	37
All	All	1244/1398 (89%)	1177 (95%)	67 (5%)	27	31

All (67) residues with a non-rotameric sidechain are listed below:

Mol	Chain	Res	Type
1	A	24[A]	LEU
1	A	38[A]	LEU
1	A	59[A]	LEU
1	A	66[A]	LEU
1	A	136[A]	LEU
1	A	168[A]	LEU
1	A	239[A]	LEU
1	A	258[A]	ILE
1	A	263[A]	LEU
1	A	264[A]	LEU
1	B	20[A]	THR
1	B	34[A]	LEU
1	B	41[A]	ASN
1	B	66[A]	LEU
1	B	135[A]	LEU
1	B	136[A]	LEU
1	B	138[A]	LEU
1	B	149[A]	LEU
1	B	168[A]	LEU
1	B	188[A]	ILE
1	B	194[A]	LEU
1	B	200[A]	GLN

Continued on next page...

Continued from previous page...

Mol	Chain	Res	Type
1	B	217[A]	LEU
1	B	264[A]	LEU
1	C	32[A]	PRO
1	C	59[A]	LEU
1	C	66[A]	LEU
1	C	112[A]	GLU
1	C	134[A]	ILE
1	C	135[A]	LEU
1	C	150[A]	PHE
1	C	168[A]	LEU
1	C	194[A]	LEU
1	C	216[A]	LEU
1	C	246[A]	TRP
1	C	258[A]	ILE
1	C	264[A]	LEU
1	E	24[B]	LEU
1	E	38[B]	LEU
1	E	59[B]	LEU
1	E	66[B]	LEU
1	E	135[B]	LEU
1	E	136[B]	LEU
1	E	149[B]	LEU
1	E	168[B]	LEU
1	E	216[B]	LEU
1	E	234[B]	GLU
1	E	258[B]	ILE
1	E	264[B]	LEU
1	F	24[B]	LEU
1	F	66[B]	LEU
1	F	108[B]	MET
1	F	135[B]	LEU
1	F	149[B]	LEU
1	F	234[B]	GLU
1	F	259[B]	PHE
1	F	264[B]	LEU
1	G	21[B]	GLN
1	G	24[B]	LEU
1	G	38[B]	LEU
1	G	66[B]	LEU
1	G	79[B]	ILE
1	G	135[B]	LEU
1	G	136[B]	LEU

Continued on next page...

Continued from previous page...

Mol	Chain	Res	Type
1	G	145[B]	ASN
1	G	149[B]	LEU
1	G	259[B]	PHE

Some sidechains can be flipped to improve hydrogen bonding and reduce clashes. All (15) such sidechains are listed below:

Mol	Chain	Res	Type
1	A	30[A]	ASN
1	A	270[A]	ASN
1	B	30[A]	ASN
1	B	200[A]	GLN
1	B	270[A]	ASN
1	C	30[A]	ASN
1	C	145[A]	ASN
1	E	21[B]	GLN
1	E	41[B]	ASN
1	E	265[B]	ASN
1	F	21[B]	GLN
1	F	41[B]	ASN
1	F	265[B]	ASN
1	G	41[B]	ASN
1	G	145[B]	ASN

5.3.3 RNA [i](#)

There are no RNA molecules in this entry.

5.4 Non-standard residues in protein, DNA, RNA chains [i](#)

There are no non-standard protein/DNA/RNA residues in this entry.

5.5 Carbohydrates [i](#)

There are no carbohydrates in this entry.

5.6 Ligand geometry [i](#)

Of 29 ligands modelled in this entry, 12 are monoatomic - leaving 17 for Mogul analysis.

In the following table, the Counts columns list the number of bonds (or angles) for which Mogul statistics could be retrieved, the number of bonds (or angles) that are observed in the model and the number of bonds (or angles) that are defined in the chemical component dictionary. The Link column lists molecule types, if any, to which the group is linked. The Z score for a bond length (or angle) is the number of standard deviations the observed value is removed from the expected value. A bond length (or angle) with $|Z| > 2$ is considered an outlier worth inspection. RMSZ is the root-mean-square of all Z scores of the bond lengths (or angles).

Mol	Type	Chain	Res	Link	Bond lengths			Bond angles		
					Counts	RMSZ	# $ Z > 2$	Counts	RMSZ	# $ Z > 2$
2	RET	A	301[A]	1	19,20,21	2.04	4 (21%)	27,27,28	1.60	8 (29%)
4	BNG	A	304	-	21,21,21	1.67	5 (23%)	26,26,26	1.28	3 (11%)
4	BNG	B	301	-	21,21,21	1.29	3 (14%)	26,26,26	0.85	0
2	RET	B	302[A]	1	19,20,21	1.48	3 (15%)	27,27,28	1.80	9 (33%)
2	RET	C	301[A]	1	19,20,21	1.67	4 (21%)	27,27,28	1.76	9 (33%)
5	L2P	C	304	-	19,19,45	1.96	8 (42%)	21,22,53	1.05	2 (9%)
4	BNG	E	301	-	21,21,21	1.64	5 (23%)	26,26,26	0.77	1 (3%)
4	BNG	E	302	-	21,21,21	1.59	5 (23%)	26,26,26	0.73	0
4	BNG	E	303	-	21,21,21	1.72	6 (28%)	26,26,26	0.78	1 (3%)
5	L2P	E	304	-	19,19,45	1.86	8 (42%)	21,22,53	1.26	1 (4%)
2	RET	E	305[B]	1	19,20,21	2.12	5 (26%)	27,27,28	1.69	7 (25%)
5	L2P	F	301	-	19,19,45	1.97	9 (47%)	21,22,53	1.00	2 (9%)
5	L2P	F	302	-	19,19,45	1.87	6 (31%)	21,22,53	0.93	1 (4%)
5	L2P	F	303	-	19,19,45	1.86	7 (36%)	21,22,53	1.32	2 (9%)
2	RET	F	305[B]	1	19,20,21	2.09	4 (21%)	27,27,28	1.71	5 (18%)
5	L2P	G	301	-	19,19,45	1.90	8 (42%)	21,22,53	1.16	2 (9%)
2	RET	G	302[B]	1	19,20,21	2.17	5 (26%)	27,27,28	1.74	6 (22%)

In the following table, the Chirals column lists the number of chiral outliers, the number of chiral centers analysed, the number of these observed in the model and the number defined in the chemical component dictionary. Similar counts are reported in the Torsion and Rings columns. '-' means no outliers of that kind were identified.

Mol	Type	Chain	Res	Link	Chirals	Torsions	Rings
2	RET	A	301[A]	1	-	0/13/30/31	0/1/1/1
4	BNG	A	304	-	-	0/12/32/32	0/1/1/1
4	BNG	B	301	-	-	0/12/32/32	0/1/1/1
2	RET	B	302[A]	1	-	0/13/30/31	0/1/1/1
2	RET	C	301[A]	1	-	0/13/30/31	0/1/1/1
5	L2P	C	304	-	-	0/20/20/51	0/0/0/0
4	BNG	E	301	-	-	0/12/32/32	0/1/1/1

Continued on next page...

Continued from previous page...

Mol	Type	Chain	Res	Link	Chirals	Torsions	Rings
4	BNG	E	302	-	-	0/12/32/32	0/1/1/1
4	BNG	E	303	-	-	0/12/32/32	0/1/1/1
5	L2P	E	304	-	-	0/20/20/51	0/0/0/0
2	RET	E	305[B]	1	-	0/13/30/31	0/1/1/1
5	L2P	F	301	-	-	0/20/20/51	0/0/0/0
5	L2P	F	302	-	-	0/20/20/51	0/0/0/0
5	L2P	F	303	-	-	0/20/20/51	0/0/0/0
2	RET	F	305[B]	1	-	0/13/30/31	0/1/1/1
5	L2P	G	301	-	-	0/20/20/51	0/0/0/0
2	RET	G	302[B]	1	-	0/13/30/31	0/1/1/1

All (95) bond length outliers are listed below:

Mol	Chain	Res	Type	Atoms	Z	Observed(Å)	Ideal(Å)
2	C	301[A]	RET	C2-C3	-3.46	1.43	1.52
2	B	302[A]	RET	C2-C3	-3.15	1.44	1.52
2	G	302[B]	RET	C2-C3	-2.62	1.45	1.52
2	E	305[B]	RET	C2-C3	-2.56	1.45	1.52
2	A	301[A]	RET	C2-C3	-2.46	1.46	1.52
2	F	305[B]	RET	C2-C3	-2.35	1.46	1.52
5	E	304	L2P	C11-C12	2.00	1.63	1.50
5	E	304	L2P	C26-C25	2.01	1.61	1.52
2	E	305[B]	RET	C2-C1	2.02	1.59	1.54
5	C	304	L2P	C21-C22	2.03	1.61	1.52
2	G	302[B]	RET	C2-C1	2.03	1.59	1.54
5	F	301	L2P	C19-C18	2.04	1.59	1.52
5	E	304	L2P	C16-C15	2.07	1.61	1.52
5	F	303	L2P	C26-C25	2.08	1.61	1.52
5	F	301	L2P	C16-C15	2.09	1.61	1.52
4	A	304	BNG	C1-C2	2.09	1.58	1.52
4	E	302	BNG	O5-C5	2.11	1.49	1.44
5	G	301	L2P	C21-C22	2.11	1.61	1.52
4	E	301	BNG	C1-C2	2.11	1.58	1.52
5	F	303	L2P	C21-C22	2.12	1.61	1.52
5	G	301	L2P	C19-C18	2.13	1.60	1.52
4	E	303	BNG	O5-C5	2.15	1.49	1.44
4	E	301	BNG	C3-C2	2.16	1.58	1.52
4	E	302	BNG	C1-C2	2.19	1.59	1.52
4	E	303	BNG	C4-C5	2.25	1.58	1.53
5	F	301	L2P	C21-C22	2.26	1.62	1.52
5	C	304	L2P	C19-C18	2.29	1.60	1.52
4	B	301	BNG	C1-C2	2.30	1.59	1.52

Continued on next page...

Continued from previous page...

Mol	Chain	Res	Type	Atoms	Z	Observed(Å)	Ideal(Å)
2	C	301[A]	RET	C7-C6	2.30	1.54	1.45
4	E	301	BNG	C4-C5	2.31	1.58	1.53
4	E	303	BNG	C3-C2	2.31	1.58	1.52
5	C	304	L2P	C17-C18	2.34	1.64	1.52
5	G	301	L2P	C17-C18	2.35	1.64	1.52
5	G	301	L2P	C26-C25	2.36	1.62	1.52
5	F	302	L2P	C26-C25	2.36	1.62	1.52
5	F	302	L2P	C17-C18	2.38	1.65	1.52
5	F	301	L2P	C26-C27	2.41	1.62	1.52
5	E	304	L2P	C14-C13	2.42	1.61	1.52
4	A	304	BNG	O5-C5	2.44	1.50	1.44
5	F	303	L2P	C26-C27	2.44	1.62	1.52
5	F	303	L2P	C17-C18	2.47	1.65	1.52
5	F	302	L2P	C26-C27	2.48	1.63	1.52
5	F	303	L2P	C25-C23	2.49	1.65	1.52
5	F	301	L2P	C17-C18	2.51	1.65	1.52
5	E	304	L2P	C26-C27	2.51	1.63	1.52
4	E	303	BNG	C1-C2	2.51	1.59	1.52
5	E	304	L2P	C25-C23	2.51	1.65	1.52
5	F	301	L2P	C26-C25	2.53	1.63	1.52
5	F	301	L2P	C14-C13	2.55	1.61	1.52
5	G	301	L2P	C26-C27	2.55	1.63	1.52
5	C	304	L2P	C26-C25	2.56	1.63	1.52
4	B	301	BNG	O1-C1	2.57	1.44	1.40
2	B	302[A]	RET	C5-C6	2.58	1.39	1.34
5	F	303	L2P	C14-C13	2.61	1.61	1.52
2	A	301[A]	RET	C7-C6	2.63	1.55	1.45
5	E	304	L2P	C17-C18	2.64	1.66	1.52
5	F	302	L2P	C25-C23	2.65	1.66	1.52
5	G	301	L2P	C25-C23	2.66	1.66	1.52
5	F	302	L2P	C14-C13	2.68	1.61	1.52
5	C	304	L2P	C26-C27	2.71	1.64	1.52
2	G	302[B]	RET	C7-C6	2.73	1.55	1.45
5	F	301	L2P	C25-C23	2.73	1.66	1.52
5	C	304	L2P	C14-C13	2.74	1.62	1.52
4	A	304	BNG	C4-C5	2.77	1.59	1.53
2	F	305[B]	RET	C7-C6	2.77	1.55	1.45
4	E	302	BNG	C4-C5	2.82	1.59	1.53
5	F	303	L2P	C15-C13	2.82	1.67	1.52
2	E	305[B]	RET	C7-C6	2.83	1.56	1.45
5	G	301	L2P	C15-C13	2.85	1.67	1.52
5	C	304	L2P	C25-C23	2.85	1.67	1.52

Continued on next page...

Continued from previous page...

Mol	Chain	Res	Type	Atoms	Z	Observed(Å)	Ideal(Å)
5	G	301	L2P	C14-C13	2.85	1.62	1.52
5	F	302	L2P	C15-C13	2.86	1.67	1.52
5	C	304	L2P	C15-C13	2.98	1.68	1.52
5	F	301	L2P	C15-C13	3.01	1.68	1.52
2	C	301[A]	RET	C5-C6	3.08	1.39	1.34
5	E	304	L2P	C15-C13	3.12	1.68	1.52
4	B	301	BNG	O5-C1	3.19	1.50	1.41
4	E	302	BNG	O1-C1	3.32	1.46	1.40
2	B	302[A]	RET	C1-C6	3.48	1.58	1.53
4	A	304	BNG	O1-C1	3.86	1.47	1.40
4	E	302	BNG	O5-C1	3.89	1.51	1.41
4	E	303	BNG	O5-C1	3.91	1.51	1.41
4	E	301	BNG	O5-C1	3.98	1.52	1.41
4	E	301	BNG	O1-C1	4.02	1.47	1.40
2	C	301[A]	RET	C1-C6	4.14	1.59	1.53
4	E	303	BNG	O1-C1	4.22	1.47	1.40
4	A	304	BNG	O5-C1	4.29	1.52	1.41
2	A	301[A]	RET	C5-C6	4.39	1.42	1.34
2	E	305[B]	RET	C5-C6	4.63	1.42	1.34
2	F	305[B]	RET	C5-C6	4.64	1.42	1.34
2	G	302[B]	RET	C5-C6	5.12	1.43	1.34
2	A	301[A]	RET	C1-C6	5.83	1.61	1.53
2	E	305[B]	RET	C1-C6	5.93	1.62	1.53
2	G	302[B]	RET	C1-C6	6.01	1.62	1.53
2	F	305[B]	RET	C1-C6	6.02	1.62	1.53

All (59) bond angle outliers are listed below:

Mol	Chain	Res	Type	Atoms	Z	Observed(°)	Ideal(°)
2	G	302[B]	RET	C1-C6-C5	-3.34	118.03	122.50
2	B	302[A]	RET	C11-C10-C9	-3.29	122.43	127.22
2	F	305[B]	RET	C1-C6-C5	-3.24	118.17	122.50
2	B	302[A]	RET	C20-C13-C14	-3.18	114.36	123.71
2	E	305[B]	RET	C1-C6-C5	-3.15	118.29	122.50
2	A	301[A]	RET	C1-C6-C5	-2.98	118.51	122.50
2	B	302[A]	RET	C7-C8-C9	-2.93	121.78	126.21
2	B	302[A]	RET	C8-C9-C10	-2.88	114.31	118.95
2	C	301[A]	RET	C1-C6-C5	-2.81	118.74	122.50
2	C	301[A]	RET	C20-C13-C14	-2.74	115.65	123.71
2	E	305[B]	RET	C8-C9-C10	-2.73	114.55	118.95
2	A	301[A]	RET	C8-C9-C10	-2.50	114.92	118.95
2	C	301[A]	RET	C8-C9-C10	-2.32	115.22	118.95

Continued on next page...

Continued from previous page...

Mol	Chain	Res	Type	Atoms	Z	Observed(°)	Ideal(°)
4	A	304	BNG	O1-C1'-C2'	-2.25	103.15	109.63
2	F	305[B]	RET	C7-C6-C5	-2.22	116.20	121.36
2	A	301[A]	RET	C7-C6-C5	-2.03	116.64	121.36
4	A	304	BNG	O5-C5-C6	2.03	111.64	106.38
5	C	304	L2P	C17-C16-C15	2.04	122.98	113.04
2	B	302[A]	RET	C19-C9-C8	2.04	121.41	118.08
2	C	301[A]	RET	C18-C5-C6	2.07	126.83	124.62
5	F	301	L2P	C16-C17-C18	2.08	121.90	115.46
5	F	302	L2P	C21-C20-C18	2.12	122.01	115.46
2	F	305[B]	RET	C17-C1-C6	2.12	113.57	110.33
2	A	301[A]	RET	C20-C13-C12	2.16	121.61	118.08
2	C	301[A]	RET	C17-C1-C6	2.19	113.68	110.33
4	E	303	BNG	O1-C1-C2	2.20	110.71	108.00
2	G	302[B]	RET	C20-C13-C12	2.25	121.76	118.08
2	B	302[A]	RET	C8-C7-C6	2.26	133.80	127.24
2	E	305[B]	RET	C19-C9-C8	2.27	121.80	118.08
2	G	302[B]	RET	C19-C9-C8	2.29	121.82	118.08
5	F	303	L2P	C16-C17-C18	2.33	122.66	115.46
2	B	302[A]	RET	C1-C6-C7	2.36	122.70	115.96
2	E	305[B]	RET	C17-C1-C6	2.39	113.98	110.33
2	A	301[A]	RET	C17-C1-C6	2.40	114.00	110.33
2	A	301[A]	RET	C19-C9-C8	2.43	122.05	118.08
2	G	302[B]	RET	C2-C1-C6	2.46	114.14	110.48
2	A	301[A]	RET	C2-C1-C6	2.48	114.16	110.48
2	C	301[A]	RET	C1-C6-C7	2.51	123.14	115.96
5	F	301	L2P	C21-C20-C18	2.52	123.26	115.46
4	E	301	BNG	O1-C1-C2	2.53	111.11	108.00
2	B	302[A]	RET	C2-C1-C6	2.60	114.35	110.48
2	C	301[A]	RET	C20-C13-C12	2.62	122.36	118.08
2	E	305[B]	RET	C7-C8-C9	2.69	130.27	126.21
5	C	304	L2P	C21-C20-C18	2.69	123.79	115.46
2	F	305[B]	RET	C2-C1-C6	2.74	114.55	110.48
2	E	305[B]	RET	C2-C1-C6	2.74	114.55	110.48
2	C	301[A]	RET	C2-C1-C6	2.81	114.66	110.48
2	B	302[A]	RET	C20-C13-C12	2.87	122.78	118.08
5	G	301	L2P	C16-C17-C18	2.90	124.44	115.46
2	C	301[A]	RET	C19-C9-C8	2.96	122.92	118.08
2	E	305[B]	RET	C1-C6-C7	3.00	124.53	115.96
2	G	302[B]	RET	C17-C1-C6	3.10	115.07	110.33
2	A	301[A]	RET	C1-C6-C7	3.11	124.84	115.96
2	G	302[B]	RET	C1-C6-C7	3.25	125.24	115.96
5	G	301	L2P	C21-C20-C18	3.25	125.52	115.46

Continued on next page...

Continued from previous page...

Mol	Chain	Res	Type	Atoms	Z	Observed(°)	Ideal(°)
5	E	304	L2P	C21-C20-C18	3.34	125.78	115.46
2	F	305[B]	RET	C1-C6-C7	3.38	125.63	115.96
5	F	303	L2P	C21-C20-C18	3.87	127.44	115.46
4	A	304	BNG	C1'-O1-C1	4.36	121.61	114.00

There are no chirality outliers.

There are no torsion outliers.

There are no ring outliers.

14 monomers are involved in 69 short contacts:

Mol	Chain	Res	Type	Clashes	Symm-Clashes
2	A	301[A]	RET	1	0
4	A	304	BNG	3	0
4	B	301	BNG	2	0
2	B	302[A]	RET	4	0
5	C	304	L2P	3	0
4	E	301	BNG	4	0
4	E	302	BNG	1	0
5	E	304	L2P	14	0
5	F	301	L2P	1	0
5	F	302	L2P	3	0
5	F	303	L2P	18	0
2	F	305[B]	RET	2	0
5	G	301	L2P	13	0
2	G	302[B]	RET	1	0

5.7 Other polymers [i](#)

There are no such residues in this entry.

5.8 Polymer linkage issues [i](#)

There are no chain breaks in this entry.

6 Fit of model and data ⓘ

6.1 Protein, DNA and RNA chains ⓘ

In the following table, the column labelled ‘#RSRZ> 2’ contains the number (and percentage) of RSRZ outliers, followed by percent RSRZ outliers for the chain as percentile scores relative to all X-ray entries and entries of similar resolution. The OWAB column contains the minimum, median, 95th percentile and maximum values of the occupancy-weighted average B-factor per residue. The column labelled ‘Q< 0.9’ lists the number of (and percentage) of residues with an average occupancy less than 0.9.

Mol	Chain	Analysed	<RSRZ>	#RSRZ>2	OWAB(Å ²)	Q<0.9
1	A	261/291 (89%)	-0.21	10 (3%) 44 43	11, 19, 37, 59	261 (100%)
1	B	258/291 (88%)	-0.23	5 (1%) 70 68	12, 22, 34, 45	258 (100%)
1	C	259/291 (89%)	0.10	20 (7%) 16 16	14, 24, 41, 48	259 (100%)
1	E	261/291 (89%)	-0.15	12 (4%) 36 35	17, 23, 44, 62	261 (100%)
1	F	259/291 (89%)	0.17	24 (9%) 11 10	16, 28, 38, 46	259 (100%)
1	G	259/291 (89%)	0.22	25 (9%) 10 9	16, 30, 48, 60	259 (100%)
All	All	1557/1746 (89%)	-0.02	96 (6%) 24 23	11, 25, 42, 62	1557 (100%)

All (96) RSRZ outliers are listed below:

Mol	Chain	Res	Type	RSRZ
1	E	17[B]	ALA	10.5
1	A	17[A]	ALA	10.3
1	C	213[A]	THR	9.2
1	G	111[B]	GLY	8.3
1	E	107[B]	VAL	6.8
1	G	110[B]	GLY	6.7
1	F	276[B]	GLY	6.4
1	C	214[A]	LEU	6.3
1	C	111[A]	GLY	5.9
1	E	277[B]	SER	5.9
1	F	214[B]	LEU	5.8
1	G	214[B]	LEU	5.6
1	G	107[B]	VAL	5.6
1	A	277[A]	SER	5.5
1	F	218[B]	THR	5.4
1	A	107[A]	VAL	5.3
1	E	104[B]	GLY	4.9
1	F	108[B]	MET	4.9
1	B	113[A]	GLU	4.8

Continued on next page...

Continued from previous page...

Mol	Chain	Res	Type	RSRZ
1	F	98[B]	ALA	4.7
1	F	215[B]	LYS	4.6
1	F	219[B]	VAL	4.5
1	F	107[B]	VAL	4.5
1	C	275[A]	SER	4.3
1	A	111[A]	GLY	4.3
1	B	276[A]	GLY	4.3
1	E	111[B]	GLY	4.3
1	G	112[B]	GLU	4.2
1	E	109[B]	LEU	4.1
1	F	110[B]	GLY	4.1
1	F	104[B]	GLY	4.1
1	G	32[B]	PRO	4.1
1	C	216[A]	LEU	4.0
1	A	276[A]	GLY	4.0
1	E	276[B]	GLY	4.0
1	G	30[B]	ASN	3.8
1	F	18[B]	GLU	3.8
1	C	215[A]	LYS	3.8
1	F	195[B]	LEU	3.8
1	A	109[A]	LEU	3.7
1	E	110[B]	GLY	3.7
1	G	33[B]	LEU	3.7
1	F	112[B]	GLU	3.6
1	C	108[A]	MET	3.6
1	C	266[A]	TYR	3.6
1	A	104[A]	GLY	3.6
1	G	272[B]	GLY	3.6
1	C	243[A]	TYR	3.5
1	G	108[B]	MET	3.5
1	G	113[B]	GLU	3.5
1	G	106[B]	SER	3.4
1	F	203[B]	LYS	3.4
1	E	108[B]	MET	3.4
1	G	210[B]	ILE	3.4
1	C	32[A]	PRO	3.4
1	C	276[A]	GLY	3.4
1	E	112[B]	GLU	3.4
1	F	113[B]	GLU	3.3
1	B	99[A]	GLY	3.3
1	G	243[B]	TYR	3.2
1	E	18[B]	GLU	3.2

Continued on next page...

Continued from previous page...

Mol	Chain	Res	Type	RSRZ
1	G	211[B]	PHE	3.1
1	C	113[A]	GLU	3.1
1	C	273[A]	VAL	3.0
1	A	112[A]	GLU	3.0
1	C	30[A]	ASN	3.0
1	F	111[B]	GLY	3.0
1	G	216[B]	LEU	3.0
1	F	200[B]	GLN	2.8
1	G	275[B]	SER	2.8
1	F	217[B]	LEU	2.8
1	C	106[A]	SER	2.7
1	G	208[B]	ALA	2.7
1	B	110[A]	GLY	2.7
1	G	240[B]	PRO	2.6
1	C	212[A]	SER	2.5
1	G	276[B]	GLY	2.5
1	C	112[A]	GLU	2.5
1	G	213[B]	THR	2.5
1	E	57[B]	ARG	2.4
1	F	213[B]	THR	2.4
1	C	269[A]	SER	2.4
1	C	217[A]	LEU	2.4
1	F	115[B]	ASP	2.3
1	G	273[B]	VAL	2.3
1	C	272[A]	GLY	2.3
1	F	210[B]	ILE	2.3
1	A	110[A]	GLY	2.2
1	B	98[A]	ALA	2.2
1	G	59[B]	LEU	2.2
1	F	196[B]	VAL	2.2
1	F	268[B]	THR	2.2
1	G	241[B]	VAL	2.1
1	G	268[B]	THR	2.1
1	F	209[B]	ASP	2.0
1	A	275[A]	SER	2.0

6.2 Non-standard residues in protein, DNA, RNA chains ⓘ

There are no non-standard protein/DNA/RNA residues in this entry.

6.3 Carbohydrates ⓘ

There are no carbohydrates in this entry.

6.4 Ligands ⓘ

In the following table, the Atoms column lists the number of modelled atoms in the group and the number defined in the chemical component dictionary. LLDF column lists the quality of electron density of the group with respect to its neighbouring residues in protein, DNA or RNA chains. The B-factors column lists the minimum, median, 95th percentile and maximum values of B factors of atoms in the group. The column labelled 'Q< 0.9' lists the number of atoms with occupancy less than 0.9.

Mol	Type	Chain	Res	Atoms	RSCC	RSR	LLDF	B-factors(Å ²)	Q<0.9
5	L2P	F	302	20/46	0.61	0.51	23.30	27,71,76,77	0
5	L2P	F	303	20/46	0.66	0.50	17.56	27,59,63,65	0
4	BNG	E	303	21/21	0.68	0.24	12.36	55,61,65,69	0
5	L2P	E	304	20/46	0.76	0.45	10.55	27,56,59,60	0
5	L2P	F	301	20/46	0.63	0.40	9.32	27,63,64,64	0
5	L2P	C	304	20/46	0.63	0.43	5.57	27,65,69,70	0
4	BNG	E	302	21/21	0.74	0.28	3.75	60,64,68,68	0
5	L2P	G	301	20/46	0.59	0.46	3.22	27,64,75,76	0
4	BNG	A	304	21/21	0.87	0.18	1.97	46,54,67,69	0
2	RET	E	305[B]	20/21	0.96	0.13	0.99	14,18,23,23	20
2	RET	F	305[B]	20/21	0.96	0.14	0.92	20,25,29,30	20
4	BNG	B	301	21/21	0.88	0.18	0.88	33,38,51,53	0
2	RET	C	301[A]	20/21	0.92	0.13	0.85	22,26,27,28	20
2	RET	G	302[B]	20/21	0.91	0.13	0.81	23,25,27,28	20
4	BNG	E	301	21/21	0.90	0.17	0.68	49,55,71,73	0
2	RET	A	301[A]	20/21	0.97	0.13	0.58	10,14,18,19	20
2	RET	B	302[A]	20/21	0.94	0.14	0.27	17,21,25,25	20
3	BR	B	303[A]	1/1	1.00	0.10	-0.61	21,21,21,21	1
3	BR	C	302[A]	1/1	0.98	0.11	-0.93	32,32,32,32	1
3	BR	G	304[B]	1/1	1.00	0.08	-1.18	78,78,78,78	1
3	BR	G	303[B]	1/1	0.99	0.09	-1.40	30,30,30,30	1
3	BR	F	304[B]	1/1	1.00	0.07	-1.51	58,58,58,58	1
3	BR	C	303[A]	1/1	0.99	0.08	-1.99	18,18,18,18	1
3	BR	F	306[B]	1/1	0.99	0.06	-2.02	26,26,26,26	1
3	BR	A	303[A]	1/1	1.00	0.07	-2.10	14,14,14,14	1
3	BR	B	304[A]	1/1	0.99	0.03	-2.24	35,35,35,35	1
3	BR	F	307[B]	1/1	0.99	0.03	-2.48	51,51,51,51	1
3	BR	E	306[B]	1/1	1.00	0.05	-4.01	27,27,27,27	1
3	BR	A	302[A]	1/1	1.00	0.05	-4.06	30,30,30,30	1

6.5 Other polymers

There are no such residues in this entry.