



# Full wwPDB X-ray Structure Validation Report ⓘ

Feb 1, 2016 – 08:07 PM GMT

PDB ID : 4QXP  
Title : Crystal structure of hSTING(G230I) in complex with DMXAA  
Authors : Gao, P.; Patel, D.J.  
Deposited on : 2014-07-21  
Resolution : 2.51 Å(reported)

This is a Full wwPDB X-ray Structure Validation Report for a publicly released PDB entry.  
We welcome your comments at [validation@mail.wwpdb.org](mailto:validation@mail.wwpdb.org)  
A user guide is available at  
<http://wwpdb.org/validation/2016/XrayValidationReportHelp>  
with specific help available everywhere you see the ⓘ symbol.

---

The following versions of software and data (see [references ⓘ](#)) were used in the production of this report:

MolProbity : 4.02b-467  
Mogul : 1.7 (RC4), CSD as536be (2015)  
Xtriage (Phenix) : 1.9-1692  
EDS : rb-20026688  
Percentile statistics : 20151230.v01 (using entries in the PDB archive December 30th 2015)  
Refmac : 5.8.0135  
CCP4 : 6.5.0  
Ideal geometry (proteins) : Engh & Huber (2001)  
Ideal geometry (DNA, RNA) : Parkinson et al. (1996)  
Validation Pipeline (wwPDB-VP) : trunk26865

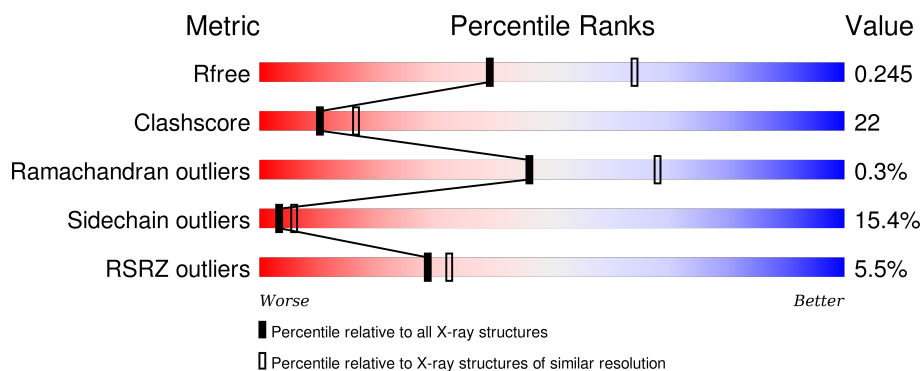
# 1 Overall quality at a glance ⓘ

The following experimental techniques were used to determine the structure:

*X-RAY DIFFRACTION*

The reported resolution of this entry is 2.51 Å.

Percentile scores (ranging between 0-100) for global validation metrics of the entry are shown in the following graphic. The table shows the number of entries on which the scores are based.



Metric	Whole archive (#Entries)	Similar resolution (#Entries, resolution range(Å))
$R_{free}$	91344	3553 (2.50-2.50)
Clashscore	102246	4242 (2.50-2.50)
Ramachandran outliers	100387	4156 (2.50-2.50)
Sidechain outliers	100360	4158 (2.50-2.50)
RSRZ outliers	91569	3562 (2.50-2.50)

The table below summarises the geometric issues observed across the polymeric chains and their fit to the electron density. The red, orange, yellow and green segments on the lower bar indicate the fraction of residues that contain outliers for  $\geq 3$ , 2, 1 and 0 types of geometric quality criteria. A grey segment represents the fraction of residues that are not modelled. The numeric value for each fraction is indicated below the corresponding segment, with a dot representing fractions  $\leq 5\%$ . The upper red bar (where present) indicates the fraction of residues that have poor fit to the electron density. The numeric value is given above the bar.

Mol	Chain	Length	Quality of chain
1	A	188	<div> <div>4%</div> <div>62%</div> <div>28%</div> <div>6%</div> <div>• •</div> </div>
1	B	188	<div> <div>7%</div> <div>62%</div> <div>29%</div> <div>6%</div> <div>• •</div> </div>

## 2 Entry composition [i](#)

There are 3 unique types of molecules in this entry. The entry contains 3024 atoms, of which 0 are hydrogens and 0 are deuteriums.

In the tables below, the ZeroOcc column contains the number of atoms modelled with zero occupancy, the AltConf column contains the number of residues with at least one atom in alternate conformation and the Trace column contains the number of residues modelled with at most 2 atoms.

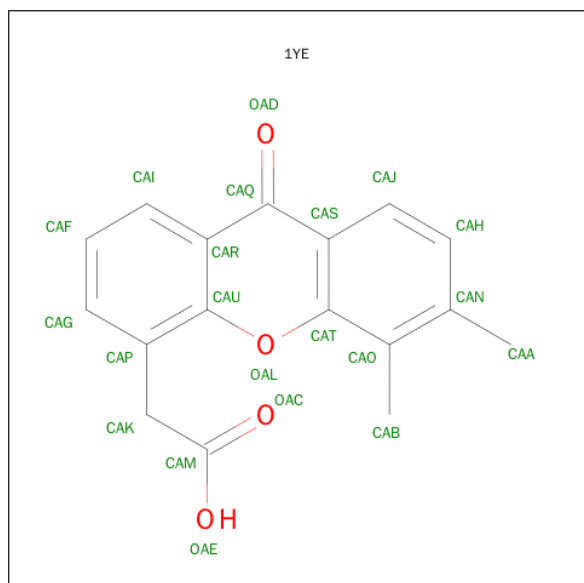
- Molecule 1 is a protein called Stimulator of interferon genes protein.

Mol	Chain	Residues	Atoms					ZeroOcc	AltConf	Trace
1	A	182	Total	C	N	O	S	0	0	0
			1466	922	260	278	6			
1	B	182	Total	C	N	O	S	0	0	0
			1466	922	260	278	6			

There are 6 discrepancies between the modelled and reference sequences:

Chain	Residue	Modelled	Actual	Comment	Reference
A	154	SER	-	EXPRESSION TAG	UNP Q86WV6
A	230	ILE	GLY	ENGINEERED MUTATION	UNP Q86WV6
A	232	ARG	HIS	ENGINEERED MUTATION	UNP Q86WV6
B	154	SER	-	EXPRESSION TAG	UNP Q86WV6
B	230	ILE	GLY	ENGINEERED MUTATION	UNP Q86WV6
B	232	ARG	HIS	ENGINEERED MUTATION	UNP Q86WV6

- Molecule 2 is (5,6-DIMETHYL-9-OXO-9H-XANTHEN-4-YL)ACETIC ACID (three-letter code: 1YE) (formula: C<sub>17</sub>H<sub>14</sub>O<sub>4</sub>).



Mol	Chain	Residues	Atoms			ZeroOcc	AltConf
2	A	1	Total	C	O	0	0
			21	17	4		
2	B	1	Total	C	O	0	0
			21	17	4		

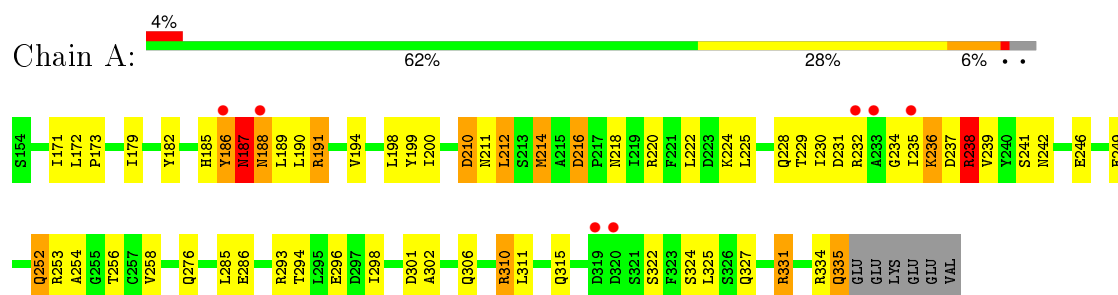
- Molecule 3 is water.

Mol	Chain	Residues	Atoms		ZeroOcc	AltConf
3	A	32	Total	O	0	0
			32	32		
3	B	18	Total	O	0	0
			18	18		

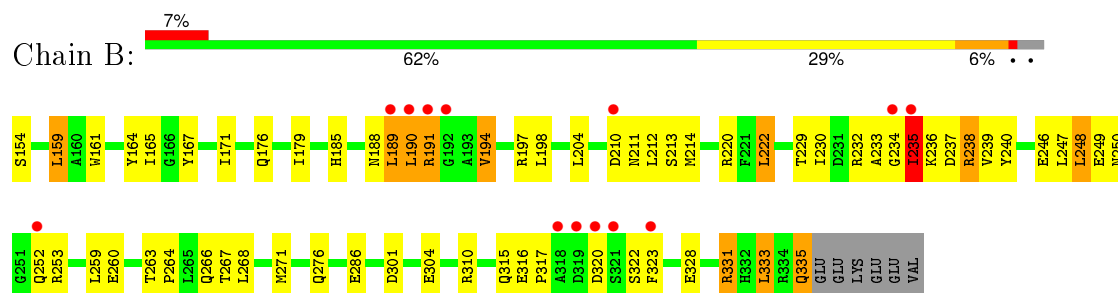
### 3 Residue-property plots [i](#)

These plots are drawn for all protein, RNA and DNA chains in the entry. The first graphic for a chain summarises the proportions of errors displayed in the second graphic. The second graphic shows the sequence view annotated by issues in geometry and electron density. Residues are color-coded according to the number of geometric quality criteria for which they contain at least one outlier: green = 0, yellow = 1, orange = 2 and red = 3 or more. A red dot above a residue indicates a poor fit to the electron density ( $\text{RSRZ} > 2$ ). Stretches of 2 or more consecutive residues without any outlier are shown as a green connector. Residues present in the sample, but not in the model, are shown in grey.

- Molecule 1: Stimulator of interferon genes protein



- Molecule 1: Stimulator of interferon genes protein



## 4 Data and refinement statistics

Property	Value	Source
Space group	P 1 21 1	Depositor
Cell constants a, b, c, $\alpha$ , $\beta$ , $\gamma$	36.57Å 77.92Å 79.63Å 90.00° 98.97° 90.00°	Depositor
Resolution (Å)	50.00 – 2.51 78.66 – 2.51	Depositor EDS
% Data completeness (in resolution range)	94.1 (50.00-2.51) 94.2 (78.66-2.51)	Depositor EDS
$R_{merge}$	(Not available)	Depositor
$R_{sym}$	(Not available)	Depositor
$\langle I/\sigma(I) \rangle$ <sup>1</sup>	2.28 (at 2.51Å)	Xtriage
Refinement program	PHENIX (phenix.refine: 1.8.2_1309)	Depositor
R, $R_{free}$	0.198 , 0.239 0.214 , 0.245	Depositor DCC
$R_{free}$ test set	720 reflections (5.29%)	DCC
Wilson B-factor (Å <sup>2</sup> )	54.6	Xtriage
Anisotropy	0.464	Xtriage
Bulk solvent $k_{sol}$ (e/Å <sup>3</sup> ), $B_{sol}$ (Å <sup>2</sup> )	0.33 , 53.7	EDS
Estimated twinning fraction	No twinning to report.	Xtriage
L-test for twinning <sup>2</sup>	$\langle  L  \rangle = 0.48$ , $\langle L^2 \rangle = 0.32$	Xtriage
Outliers	0 of 14331 reflections	Xtriage
$F_o, F_c$ correlation	0.94	EDS
Total number of atoms	3024	wwPDB-VP
Average B, all atoms (Å <sup>2</sup> )	68.0	wwPDB-VP

Xtriage's analysis on translational NCS is as follows: *The largest off-origin peak in the Patterson function is 7.04% of the height of the origin peak. No significant pseudotranslation is detected.*

<sup>1</sup>Intensities estimated from amplitudes.

<sup>2</sup>Theoretical values of  $\langle |L| \rangle$ ,  $\langle L^2 \rangle$  for acentric reflections are 0.5, 0.375 respectively for untwinned datasets, and 0.333, 0.2 for perfectly twinned datasets.

## 5 Model quality ⓘ

### 5.1 Standard geometry ⓘ

Bond lengths and bond angles in the following residue types are not validated in this section: 1YE

The Z score for a bond length (or angle) is the number of standard deviations the observed value is removed from the expected value. A bond length (or angle) with  $|Z| > 5$  is considered an outlier worth inspection. RMSZ is the root-mean-square of all Z scores of the bond lengths (or angles).

Mol	Chain	Bond lengths		Bond angles	
		RMSZ	$\# Z  > 5$	RMSZ	$\# Z  > 5$
1	A	0.76	0/1494	0.80	4/2026 (0.2%)
1	B	0.49	0/1494	0.58	0/2026
All	All	0.64	0/2988	0.70	4/4052 (0.1%)

Chiral center outliers are detected by calculating the chiral volume of a chiral center and verifying if the center is modelled as a planar moiety or with the opposite hand. A planarity outlier is detected by checking planarity of atoms in a peptide group, atoms in a mainchain group or atoms of a sidechain that are expected to be planar.

Mol	Chain	#Chirality outliers	#Planarity outliers
1	A	0	1

There are no bond length outliers.

All (4) bond angle outliers are listed below:

Mol	Chain	Res	Type	Atoms	Z	Observed(°)	Ideal(°)
1	A	187	ASN	N-CA-CB	-8.73	94.88	110.60
1	A	186	TYR	CB-CA-C	8.44	127.28	110.40
1	A	238	ARG	NE-CZ-NH1	-8.43	116.08	120.30
1	A	216	ASP	C-N-CD	5.99	140.98	128.40

There are no chirality outliers.

All (1) planarity outliers are listed below:

Mol	Chain	Res	Type	Group
1	A	252	GLN	Peptide

## 5.2 Too-close contacts ⓘ

In the following table, the Non-H and H(model) columns list the number of non-hydrogen atoms and hydrogen atoms in the chain respectively. The H(added) column lists the number of hydrogen atoms added and optimized by MolProbity. The Clashes column lists the number of clashes within the asymmetric unit, whereas Symm-Clashes lists symmetry related clashes.

Mol	Chain	Non-H	H(model)	H(added)	Clashes	Symm-Clashes
1	A	1466	0	1444	90	0
1	B	1466	0	1444	41	0
2	A	21	0	13	1	0
2	B	21	0	13	2	0
3	A	32	0	0	5	0
3	B	18	0	0	2	0
All	All	3024	0	2914	127	0

The all-atom clashscore is defined as the number of clashes found per 1000 atoms (including hydrogen atoms). The all-atom clashscore for this structure is 22.

All (127) close contacts within the same asymmetric unit are listed below, sorted by their clash magnitude.

Atom-1	Atom-2	Interatomic distance (Å)	Clash overlap (Å)
1:A:187:ASN:N	1:A:187:ASN:HD22	1.29	1.20
1:A:235:ILE:CD1	1:A:238:ARG:HD3	1.75	1.16
1:A:187:ASN:ND2	1:A:187:ASN:N	1.99	1.05
1:A:186:TYR:C	1:A:187:ASN:HD22	1.61	1.03
1:A:253:ARG:HB3	1:A:254:ALA:HA	1.44	0.97
1:A:188:ASN:HB2	1:A:189:LEU:CD2	1.93	0.97
1:A:187:ASN:HA	1:A:189:LEU:HA	1.49	0.94
1:A:235:ILE:HD12	1:A:238:ARG:HD3	1.57	0.87
1:A:188:ASN:HB2	1:A:189:LEU:HD23	1.57	0.86
1:A:186:TYR:HA	1:A:187:ASN:C	1.96	0.86
1:A:186:TYR:HB3	1:A:188:ASN:O	1.76	0.86
1:A:253:ARG:HB3	1:A:254:ALA:CA	2.04	0.86
1:A:182:TYR:HA	1:A:186:TYR:HE1	1.42	0.84
1:A:212:LEU:HD12	1:A:212:LEU:O	1.77	0.84
1:A:186:TYR:CB	1:A:188:ASN:O	2.25	0.83
1:A:241:SER:HB2	3:A:531:HOH:O	1.78	0.83
1:A:182:TYR:O	1:A:186:TYR:HD1	1.62	0.81
1:A:182:TYR:HA	1:A:186:TYR:CE1	2.17	0.80
1:A:187:ASN:HA	1:A:189:LEU:CA	2.12	0.78
1:A:235:ILE:CG1	1:A:238:ARG:HD3	2.13	0.78
1:A:235:ILE:HD11	1:A:238:ARG:HD3	1.64	0.77

*Continued on next page...*

*Continued from previous page...*

Atom-1	Atom-2	Interatomic distance (Å)	Clash overlap (Å)
1:A:236:LYS:O	1:A:237:ASP:HB2	1.84	0.76
1:A:253:ARG:CB	1:A:254:ALA:HA	2.16	0.76
1:A:187:ASN:H	1:A:187:ASN:HD22	1.34	0.75
1:B:222:LEU:HD12	1:B:246:GLU:HB3	1.72	0.72
1:B:189:LEU:HD12	1:B:189:LEU:N	2.04	0.72
1:A:239:VAL:HB	1:B:239:VAL:HB	1.71	0.71
1:A:225:LEU:HD12	1:A:242:ASN:HB2	1.71	0.71
1:B:235:ILE:O	1:B:235:ILE:HG12	1.90	0.70
1:B:247:LEU:C	1:B:248:LEU:HD23	2.13	0.69
1:B:191:ARG:HD2	1:B:191:ARG:N	2.06	0.69
1:A:211:ASN:OD1	1:A:214:MET:N	2.23	0.68
1:A:241:SER:CB	3:A:531:HOH:O	2.40	0.68
1:B:234:GLY:CA	3:B:517:HOH:O	2.42	0.67
1:B:189:LEU:HD12	1:B:189:LEU:H	1.60	0.67
1:A:235:ILE:HG13	1:A:238:ARG:HD3	1.77	0.66
1:A:186:TYR:HB2	1:A:188:ASN:O	1.96	0.65
1:A:198:LEU:HD23	1:A:198:LEU:C	2.20	0.63
1:B:331:ARG:O	1:B:335:GLN:NE2	2.32	0.62
1:A:210:ASP:HA	1:B:233:ALA:HB2	1.80	0.62
1:A:188:ASN:CB	1:A:189:LEU:HD23	2.30	0.61
1:A:198:LEU:HD22	1:A:200:ILE:HG13	1.81	0.61
1:A:179:ILE:HG23	1:A:194:VAL:CG2	2.31	0.61
1:A:224:LYS:HZ1	1:B:236:LYS:HD2	1.64	0.60
1:A:234:GLY:HA3	1:B:266:GLN:HE22	1.65	0.60
1:B:230:ILE:HD11	1:B:240:TYR:HD1	1.65	0.60
1:A:186:TYR:C	1:A:187:ASN:ND2	2.43	0.59
1:A:241:SER:HA	3:A:531:HOH:O	2.03	0.58
1:A:310:ARG:NH1	1:A:311:LEU:H	2.03	0.57
1:A:230:ILE:HB	1:A:235:ILE:HG12	1.86	0.57
1:B:230:ILE:HD11	1:B:240:TYR:CD1	2.40	0.56
1:A:187:ASN:ND2	1:A:187:ASN:H	1.92	0.56
1:A:249:GLU:O	1:A:252:GLN:HB2	2.05	0.56
1:A:235:ILE:HD12	1:A:238:ARG:CD	2.35	0.56
2:A:401:IYE:H12	2:B:401:IYE:H12	1.88	0.55
1:A:241:SER:CA	3:A:531:HOH:O	2.53	0.55
1:A:224:LYS:NZ	1:B:236:LYS:HD2	2.22	0.55
1:B:247:LEU:HD12	1:B:333:LEU:HD12	1.87	0.55
1:B:316:GLU:HG2	1:B:323:PHE:CD1	2.42	0.55
1:A:253:ARG:HB3	1:A:254:ALA:CB	2.37	0.54
1:A:188:ASN:HB2	1:A:189:LEU:HD21	1.88	0.54
1:A:302:ALA:O	1:A:306:GLN:NE2	2.35	0.54

*Continued on next page...*

*Continued from previous page...*

Atom-1	Atom-2	Interatomic distance (Å)	Clash overlap (Å)
1:A:210:ASP:HA	1:B:233:ALA:CB	2.38	0.54
1:A:216:ASP:OD1	1:A:218:ASN:N	2.33	0.53
1:B:212:LEU:HD21	1:B:259:LEU:HD23	1.90	0.53
1:B:167:TYR:OH	1:B:260:GLU:OE2	2.22	0.53
1:A:212:LEU:HD12	1:A:212:LEU:C	2.28	0.53
1:A:191:ARG:N	1:A:191:ARG:CD	2.72	0.53
1:A:285:LEU:HD12	1:A:285:LEU:O	2.09	0.53
1:A:230:ILE:HG13	1:A:235:ILE:HD11	1.90	0.52
1:A:188:ASN:HB2	1:A:189:LEU:CG	2.39	0.52
1:A:198:LEU:HD23	1:A:199:TYR:N	2.24	0.52
1:B:230:ILE:HG12	1:B:238:ARG:O	2.11	0.51
1:A:198:LEU:HD22	1:A:200:ILE:CG1	2.41	0.51
1:B:252:GLN:CD	1:B:253:ARG:H	2.15	0.50
1:A:198:LEU:CD2	1:A:198:LEU:C	2.80	0.50
1:A:235:ILE:HG13	1:A:238:ARG:CD	2.40	0.50
1:B:185:HIS:HB3	1:B:188:ASN:HD22	1.75	0.50
1:A:186:TYR:HB3	1:A:188:ASN:C	2.31	0.50
1:A:191:ARG:N	1:A:191:ARG:HD3	2.27	0.49
2:B:401:1YE:OAC	3:B:514:HOH:O	2.20	0.49
1:A:228:GLN:HG3	1:A:229:THR:N	2.27	0.48
1:A:324:SER:HB3	1:A:327:GLN:HB2	1.96	0.47
1:B:179:ILE:HG23	1:B:194:VAL:HG22	1.95	0.47
1:B:204:LEU:HD12	1:B:315:GLN:HG3	1.94	0.47
1:A:331:ARG:CG	1:A:331:ARG:HH11	2.27	0.47
1:B:161:TRP:O	1:B:165:ILE:HG12	2.15	0.47
1:A:230:ILE:HG13	1:A:235:ILE:CD1	2.45	0.47
1:B:252:GLN:OE1	1:B:253:ARG:N	2.44	0.47
1:A:293:ARG:NH1	3:A:524:HOH:O	2.47	0.46
1:A:186:TYR:N	1:A:186:TYR:CD1	2.83	0.46
1:A:188:ASN:HA	1:A:189:LEU:HA	1.68	0.46
1:A:220:ARG:HD2	1:A:246:GLU:OE2	2.15	0.46
1:B:164:TYR:OH	1:B:304:GLU:OE2	2.27	0.45
1:A:230:ILE:HG21	1:A:235:ILE:CG2	2.47	0.45
1:B:179:ILE:HG23	1:B:194:VAL:CG2	2.46	0.45
1:B:229:THR:C	1:B:230:ILE:HD13	2.37	0.45
1:A:187:ASN:HA	1:A:189:LEU:N	2.31	0.45
1:A:188:ASN:HB2	1:A:189:LEU:HG	1.99	0.45
1:B:320:ASP:HB2	1:B:322:SER:H	1.82	0.44
1:A:172:LEU:N	1:A:173:PRO:CD	2.81	0.44
1:A:182:TYR:O	1:A:186:TYR:CD1	2.54	0.43
1:A:225:LEU:HD11	1:A:258:VAL:HG21	1.99	0.43

*Continued on next page...*

*Continued from previous page...*

Atom-1	Atom-2	Interatomic distance (Å)	Clash overlap (Å)
1:B:235:ILE:HG12	1:B:238:ARG:HB2	2.00	0.43
1:B:249:GLU:O	1:B:250:ASN:HB2	2.17	0.43
1:A:187:ASN:CG	1:A:187:ASN:O	2.55	0.43
1:A:310:ARG:HH11	1:A:310:ARG:HA	1.83	0.43
1:A:334:ARG:C	1:A:335:GLN:HE21	2.19	0.43
1:B:248:LEU:HD23	1:B:248:LEU:N	2.34	0.43
1:B:252:GLN:CD	1:B:253:ARG:N	2.73	0.42
1:B:267:THR:O	1:B:271:MET:HG3	2.18	0.42
1:A:222:LEU:HG	1:A:246:GLU:HB2	2.01	0.42
1:B:190:LEU:HD13	1:B:191:ARG:NH2	2.34	0.42
1:B:159:LEU:HG	1:B:264:PRO:HB3	2.02	0.42
1:A:211:ASN:CG	1:A:214:MET:HB2	2.40	0.42
1:A:331:ARG:NH1	1:A:331:ARG:HG2	2.34	0.42
1:B:317:PRO:HG2	1:B:320:ASP:O	2.20	0.42
1:A:190:LEU:C	1:A:191:ARG:HD3	2.40	0.42
1:A:325:LEU:HA	1:A:325:LEU:HD12	1.85	0.42
1:A:172:LEU:N	1:A:173:PRO:HD2	2.35	0.41
1:A:194:VAL:HG12	1:A:256:THR:HG22	2.02	0.41
1:A:186:TYR:CA	1:A:187:ASN:C	2.79	0.41
1:A:253:ARG:HB3	1:A:254:ALA:HB2	2.02	0.41
1:B:263:THR:O	1:B:266:GLN:HB2	2.21	0.41
1:B:268:LEU:HD23	1:B:268:LEU:HA	1.95	0.41
1:A:296:GLU:HG3	1:A:311:LEU:HD12	2.03	0.40
1:A:294:THR:O	1:A:298:ILE:HG13	2.21	0.40

There are no symmetry-related clashes.

## 5.3 Torsion angles [i](#)

### 5.3.1 Protein backbone [i](#)

In the following table, the Percentiles column shows the percent Ramachandran outliers of the chain as a percentile score with respect to all X-ray entries followed by that with respect to entries of similar resolution.

The Analysed column shows the number of residues for which the backbone conformation was analysed, and the total number of residues.

Mol	Chain	Analysed	Favoured	Allowed	Outliers	Percentiles
1	A	180/188 (96%)	173 (96%)	7 (4%)	0	<b>100</b> <b>100</b>

*Continued on next page...*

*Continued from previous page...*

Mol	Chain	Analysed	Favoured	Allowed	Outliers	Percentiles	
1	B	180/188 (96%)	177 (98%)	2 (1%)	1 (1%)	30	50
All	All	360/376 (96%)	350 (97%)	9 (2%)	1 (0%)	46	68

All (1) Ramachandran outliers are listed below:

Mol	Chain	Res	Type
1	B	235	ILE

### 5.3.2 Protein sidechains ⓘ

In the following table, the Percentiles column shows the percent sidechain outliers of the chain as a percentile score with respect to all X-ray entries followed by that with respect to entries of similar resolution.

The Analysed column shows the number of residues for which the sidechain conformation was analysed, and the total number of residues.

Mol	Chain	Analysed	Rotameric	Outliers	Percentiles	
1	A	159/165 (96%)	139 (87%)	20 (13%)	5	10
1	B	159/165 (96%)	130 (82%)	29 (18%)	2	3
All	All	318/330 (96%)	269 (85%)	49 (15%)	3	6

All (49) residues with a non-rotameric sidechain are listed below:

Mol	Chain	Res	Type
1	A	171	ILE
1	A	185	HIS
1	A	187	ASN
1	A	188	ASN
1	A	191	ARG
1	A	210	ASP
1	A	212	LEU
1	A	214	MET
1	A	231	ASP
1	A	232	ARG
1	A	236	LYS
1	A	238	ARG
1	A	276	GLN
1	A	286	GLU
1	A	301	ASP

*Continued on next page...*

*Continued from previous page...*

Mol	Chain	Res	Type
1	A	310	ARG
1	A	315	GLN
1	A	322	SER
1	A	331	ARG
1	A	335	GLN
1	B	154	SER
1	B	159	LEU
1	B	171	ILE
1	B	176	GLN
1	B	189	LEU
1	B	190	LEU
1	B	191	ARG
1	B	194	VAL
1	B	197	ARG
1	B	198	LEU
1	B	210	ASP
1	B	211	ASN
1	B	213	SER
1	B	214	MET
1	B	220	ARG
1	B	222	LEU
1	B	232	ARG
1	B	235	ILE
1	B	237	ASP
1	B	238	ARG
1	B	248	LEU
1	B	276	GLN
1	B	286	GLU
1	B	301	ASP
1	B	310	ARG
1	B	328	GLU
1	B	331	ARG
1	B	333	LEU
1	B	335	GLN

Some sidechains can be flipped to improve hydrogen bonding and reduce clashes. All (4) such sidechains are listed below:

Mol	Chain	Res	Type
1	A	187	ASN
1	B	188	ASN
1	B	266	GLN
1	B	335	GLN

### 5.3.3 RNA ⓘ

There are no RNA molecules in this entry.

## 5.4 Non-standard residues in protein, DNA, RNA chains ⓘ

There are no non-standard protein/DNA/RNA residues in this entry.

## 5.5 Carbohydrates ⓘ

There are no carbohydrates in this entry.

## 5.6 Ligand geometry ⓘ

2 ligands are modelled in this entry.

In the following table, the Counts columns list the number of bonds (or angles) for which Mogul statistics could be retrieved, the number of bonds (or angles) that are observed in the model and the number of bonds (or angles) that are defined in the chemical component dictionary. The Link column lists molecule types, if any, to which the group is linked. The Z score for a bond length (or angle) is the number of standard deviations the observed value is removed from the expected value. A bond length (or angle) with  $|Z| > 2$  is considered an outlier worth inspection. RMSZ is the root-mean-square of all Z scores of the bond lengths (or angles).

Mol	Type	Chain	Res	Link	Bond lengths			Bond angles		
					Counts	RMSZ	# $ Z  > 2$	Counts	RMSZ	# $ Z  > 2$
2	1YE	A	401	-	17,23,23	2.64	3 (17%)	21,34,34	1.14	2 (9%)
2	1YE	B	401	-	17,23,23	2.71	4 (23%)	21,34,34	1.36	3 (14%)

In the following table, the Chirals column lists the number of chiral outliers, the number of chiral centers analysed, the number of these observed in the model and the number defined in the chemical component dictionary. Similar counts are reported in the Torsion and Rings columns. '-' means no outliers of that kind were identified.

Mol	Type	Chain	Res	Link	Chirals	Torsions	Rings
2	1YE	A	401	-	-	0/2/4/4	0/3/3/3
2	1YE	B	401	-	-	0/2/4/4	0/3/3/3

All (7) bond length outliers are listed below:

Mol	Chain	Res	Type	Atoms	Z	Observed(Å)	Ideal(Å)
2	B	401	1YE	CAK-CAP	-7.23	1.38	1.52

*Continued on next page...*

*Continued from previous page...*

Mol	Chain	Res	Type	Atoms	Z	Observed(Å)	Ideal(Å)
2	A	401	1YE	CAK-CAP	-6.73	1.39	1.52
2	A	401	1YE	CAA-CAN	-5.57	1.39	1.51
2	B	401	1YE	CAA-CAN	-5.47	1.39	1.51
2	A	401	1YE	CAB-CAO	-5.31	1.40	1.51
2	B	401	1YE	CAB-CAO	-5.08	1.40	1.51
2	B	401	1YE	CAQ-CAR	-2.06	1.38	1.41

All (5) bond angle outliers are listed below:

Mol	Chain	Res	Type	Atoms	Z	Observed(°)	Ideal(°)
2	B	401	1YE	CAT-OAL-CAU	-2.90	118.37	122.28
2	B	401	1YE	CAS-CAQ-CAR	-2.68	117.32	121.87
2	A	401	1YE	CAS-CAQ-CAR	-2.51	117.61	121.87
2	A	401	1YE	CAT-OAL-CAU	-2.19	119.32	122.28
2	B	401	1YE	CAP-CAU-CAR	2.11	122.08	119.23

There are no chirality outliers.

There are no torsion outliers.

There are no ring outliers.

2 monomers are involved in 2 short contacts:

Mol	Chain	Res	Type	Clashes	Symm-Clashes
2	A	401	1YE	1	0
2	B	401	1YE	2	0

## 5.7 Other polymers [i](#)

There are no such residues in this entry.

## 5.8 Polymer linkage issues [i](#)

There are no chain breaks in this entry.

## 6 Fit of model and data ⓘ

### 6.1 Protein, DNA and RNA chains ⓘ

In the following table, the column labelled ‘#RSRZ> 2’ contains the number (and percentage) of RSRZ outliers, followed by percent RSRZ outliers for the chain as percentile scores relative to all X-ray entries and entries of similar resolution. The OWAB column contains the minimum, median, 95<sup>th</sup> percentile and maximum values of the occupancy-weighted average B-factor per residue. The column labelled ‘Q< 0.9’ lists the number of (and percentage) of residues with an average occupancy less than 0.9.

Mol	Chain	Analysed	<RSRZ>	#RSRZ>2	OWAB(Å <sup>2</sup> )	Q<0.9
1	A	182/188 (96%)	0.25	7 (3%) 44 49	25, 60, 120, 152	0
1	B	182/188 (96%)	0.33	13 (7%) 19 21	30, 70, 128, 160	0
All	All	364/376 (96%)	0.29	20 (5%) 29 32	25, 63, 124, 160	0

All (20) RSRZ outliers are listed below:

Mol	Chain	Res	Type	RSRZ
1	B	235	ILE	9.7
1	A	319	ASP	6.9
1	A	233	ALA	5.6
1	B	319	ASP	5.5
1	B	320	ASP	4.2
1	A	235	ILE	4.1
1	A	186	TYR	4.0
1	B	321	SER	3.9
1	B	318	ALA	3.9
1	A	320	ASP	3.5
1	B	234	GLY	3.5
1	B	191	ARG	3.4
1	A	232	ARG	3.3
1	A	188	ASN	3.2
1	B	189	LEU	3.0
1	B	210	ASP	2.5
1	B	252	GLN	2.3
1	B	192	GLY	2.3
1	B	323	PHE	2.2
1	B	190	LEU	2.1

## 6.2 Non-standard residues in protein, DNA, RNA chains [i](#)

There are no non-standard protein/DNA/RNA residues in this entry.

## 6.3 Carbohydrates [i](#)

There are no carbohydrates in this entry.

## 6.4 Ligands [i](#)

In the following table, the Atoms column lists the number of modelled atoms in the group and the number defined in the chemical component dictionary. LLDF column lists the quality of electron density of the group with respect to its neighbouring residues in protein, DNA or RNA chains. The B-factors column lists the minimum, median, 95<sup>th</sup> percentile and maximum values of B factors of atoms in the group. The column labelled 'Q< 0.9' lists the number of atoms with occupancy less than 0.9.

Mol	Type	Chain	Res	Atoms	RSCC	RSR	LLDF	B-factors( $\text{\AA}^2$ )	Q<0.9
2	1YE	B	401	21/21	0.94	0.17	-0.27	26,42,49,54	0
2	1YE	A	401	21/21	0.93	0.16	-0.32	26,45,55,57	0

## 6.5 Other polymers [i](#)

There are no such residues in this entry.