



# wwPDB X-ray Structure Validation Summary Report ⓘ

Feb 1, 2016 – 08:14 PM GMT

PDB ID : 4R9L  
Title : Structure of a thermostable elevenfold mutant of limonene epoxide hydrolase from *Rhodococcus erythropolis*, containing two stabilizing disulfide bonds  
Authors : Floor, R.J.; Wijma, H.J.; Jekel, P.A.; Terwisscha van Scheltinga, A.C.; Dijkstra, B.W.; Janssen, D.B.  
Deposited on : 2014-09-05  
Resolution : 1.80 Å(reported)

This is a wwPDB X-ray Structure Validation Summary Report for a publicly released PDB entry.  
We welcome your comments at [validation@mail.wwpdb.org](mailto:validation@mail.wwpdb.org)  
A user guide is available at  
<http://wwpdb.org/validation/2016/XrayValidationReportHelp>  
with specific help available everywhere you see the ⓘ symbol.

---

The following versions of software and data (see [references ⓘ](#)) were used in the production of this report:

MolProbity : 4.02b-467  
Mogul : 1.7 (RC4), CSD as536be (2015)  
Xtriage (Phenix) : 1.9-1692  
EDS : rb-20026688  
Percentile statistics : 20151230.v01 (using entries in the PDB archive December 30th 2015)  
Refmac : 5.8.0135  
CCP4 : 6.5.0  
Ideal geometry (proteins) : Engh & Huber (2001)  
Ideal geometry (DNA, RNA) : Parkinson et al. (1996)  
Validation Pipeline (wwPDB-VP) : trunk26865

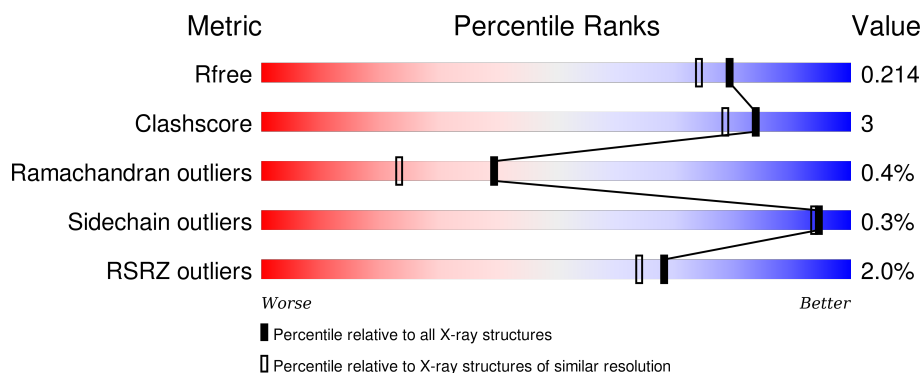
# 1 Overall quality at a glance ⓘ

The following experimental techniques were used to determine the structure:

## *X-RAY DIFFRACTION*

The reported resolution of this entry is 1.80 Å.

Percentile scores (ranging between 0-100) for global validation metrics of the entry are shown in the following graphic. The table shows the number of entries on which the scores are based.



Metric	Whole archive (#Entries)	Similar resolution (#Entries, resolution range(Å))
$R_{free}$	91344	4533 (1.80-1.80)
Clashscore	102246	5383 (1.80-1.80)
Ramachandran outliers	100387	5320 (1.80-1.80)
Sidechain outliers	100360	5319 (1.80-1.80)
RSRZ outliers	91569	4547 (1.80-1.80)

The table below summarises the geometric issues observed across the polymeric chains and their fit to the electron density. The red, orange, yellow and green segments on the lower bar indicate the fraction of residues that contain outliers for  $\geq 3$ , 2, 1 and 0 types of geometric quality criteria. A grey segment represents the fraction of residues that are not modelled. The numeric value for each fraction is indicated below the corresponding segment, with a dot representing fractions  $\leq 5\%$ . The upper red bar (where present) indicates the fraction of residues that have poor fit to the electron density. The numeric value is given above the bar.

Mol	Chain	Length	Quality of chain
1	A	174	<div> <div>2%</div> <div>80%</div> <div>16%</div> </div>
1	B	174	<div> <div>3%</div> <div>83%</div> <div>5%</div> <div>12%</div> </div>
1	C	174	<div> <div>%</div> <div>83%</div> <div>8%</div> <div>8%</div> </div>

The following table lists non-polymeric compounds, carbohydrate monomers and non-standard residues in protein, DNA, RNA chains that are outliers for geometric or electron-density-fit criteria:

Mol	Type	Chain	Res	Chirality	Geometry	Clashes	Electron density
2	HYH	A	201	-	-	-	X
2	HYH	C	201	-	-	-	X

## 2 Entry composition

There are 3 unique types of molecules in this entry. The entry contains 3854 atoms, of which 0 are hydrogens and 0 are deuteriums.

In the tables below, the ZeroOcc column contains the number of atoms modelled with zero occupancy, the AltConf column contains the number of residues with at least one atom in alternate conformation and the Trace column contains the number of residues modelled with at most 2 atoms.

- Molecule 1 is a protein called Limonene-1,2-epoxide hydrolase.

Mol	Chain	Residues	Atoms					ZeroOcc	AltConf	Trace
1	A	147	Total	C	N	O	S	0	3	0
			1162	744	189	219	10			
1	B	153	Total	C	N	O	S	0	2	0
			1202	768	196	228	10			
1	C	160	Total	C	N	O	S	0	0	0
			1254	800	204	242	8			

There are 114 discrepancies between the modelled and reference sequences:

Chain	Residue	Modelled	Actual	Comment	Reference
A	1	MET	-	EXPRESSION TAG	UNP Q9ZAG3
A	2	ALA	-	EXPRESSION TAG	UNP Q9ZAG3
A	5	CYS	ILE	ENGINEERED MUTATION	UNP Q9ZAG3
A	15	PRO	SER	ENGINEERED MUTATION	UNP Q9ZAG3
A	19	LYS	ALA	ENGINEERED MUTATION	UNP Q9ZAG3
A	76	LYS	THR	ENGINEERED MUTATION	UNP Q9ZAG3
A	84	CYS	GLU	ENGINEERED MUTATION	UNP Q9ZAG3
A	85	VAL	THR	ENGINEERED MUTATION	UNP Q9ZAG3
A	89	CYS	GLY	ENGINEERED MUTATION	UNP Q9ZAG3
A	91	CYS	SER	ENGINEERED MUTATION	UNP Q9ZAG3
A	92	LYS	ASN	ENGINEERED MUTATION	UNP Q9ZAG3
A	96	PHE	TYR	ENGINEERED MUTATION	UNP Q9ZAG3
A	124	ASP	GLU	ENGINEERED MUTATION	UNP Q9ZAG3
A	150	LYS	-	EXPRESSION TAG	UNP Q9ZAG3
A	151	LEU	-	EXPRESSION TAG	UNP Q9ZAG3
A	152	GLY	-	EXPRESSION TAG	UNP Q9ZAG3
A	153	PRO	-	EXPRESSION TAG	UNP Q9ZAG3
A	154	GLU	-	EXPRESSION TAG	UNP Q9ZAG3
A	155	GLN	-	EXPRESSION TAG	UNP Q9ZAG3
A	156	LYS	-	EXPRESSION TAG	UNP Q9ZAG3
A	157	LEU	-	EXPRESSION TAG	UNP Q9ZAG3
A	158	ILE	-	EXPRESSION TAG	UNP Q9ZAG3
A	159	SER	-	EXPRESSION TAG	UNP Q9ZAG3

*Continued on next page...*

*Continued from previous page...*

Chain	Residue	Modelled	Actual	Comment	Reference
A	160	GLU	-	EXPRESSION TAG	UNP Q9ZAG3
A	161	GLU	-	EXPRESSION TAG	UNP Q9ZAG3
A	162	ASP	-	EXPRESSION TAG	UNP Q9ZAG3
A	163	LEU	-	EXPRESSION TAG	UNP Q9ZAG3
A	164	ASN	-	EXPRESSION TAG	UNP Q9ZAG3
A	165	SER	-	EXPRESSION TAG	UNP Q9ZAG3
A	166	ALA	-	EXPRESSION TAG	UNP Q9ZAG3
A	167	VAL	-	EXPRESSION TAG	UNP Q9ZAG3
A	168	ASP	-	EXPRESSION TAG	UNP Q9ZAG3
A	169	HIS	-	EXPRESSION TAG	UNP Q9ZAG3
A	170	HIS	-	EXPRESSION TAG	UNP Q9ZAG3
A	171	HIS	-	EXPRESSION TAG	UNP Q9ZAG3
A	172	HIS	-	EXPRESSION TAG	UNP Q9ZAG3
A	173	HIS	-	EXPRESSION TAG	UNP Q9ZAG3
A	174	HIS	-	EXPRESSION TAG	UNP Q9ZAG3
B	1	MET	-	EXPRESSION TAG	UNP Q9ZAG3
B	2	ALA	-	EXPRESSION TAG	UNP Q9ZAG3
B	5	CYS	ILE	ENGINEERED MUTATION	UNP Q9ZAG3
B	15	PRO	SER	ENGINEERED MUTATION	UNP Q9ZAG3
B	19	LYS	ALA	ENGINEERED MUTATION	UNP Q9ZAG3
B	76	LYS	THR	ENGINEERED MUTATION	UNP Q9ZAG3
B	84	CYS	GLU	ENGINEERED MUTATION	UNP Q9ZAG3
B	85	VAL	THR	ENGINEERED MUTATION	UNP Q9ZAG3
B	89	CYS	GLY	ENGINEERED MUTATION	UNP Q9ZAG3
B	91	CYS	SER	ENGINEERED MUTATION	UNP Q9ZAG3
B	92	LYS	ASN	ENGINEERED MUTATION	UNP Q9ZAG3
B	96	PHE	TYR	ENGINEERED MUTATION	UNP Q9ZAG3
B	124	ASP	GLU	ENGINEERED MUTATION	UNP Q9ZAG3
B	150	LYS	-	EXPRESSION TAG	UNP Q9ZAG3
B	151	LEU	-	EXPRESSION TAG	UNP Q9ZAG3
B	152	GLY	-	EXPRESSION TAG	UNP Q9ZAG3
B	153	PRO	-	EXPRESSION TAG	UNP Q9ZAG3
B	154	GLU	-	EXPRESSION TAG	UNP Q9ZAG3
B	155	GLN	-	EXPRESSION TAG	UNP Q9ZAG3
B	156	LYS	-	EXPRESSION TAG	UNP Q9ZAG3
B	157	LEU	-	EXPRESSION TAG	UNP Q9ZAG3
B	158	ILE	-	EXPRESSION TAG	UNP Q9ZAG3
B	159	SER	-	EXPRESSION TAG	UNP Q9ZAG3
B	160	GLU	-	EXPRESSION TAG	UNP Q9ZAG3
B	161	GLU	-	EXPRESSION TAG	UNP Q9ZAG3
B	162	ASP	-	EXPRESSION TAG	UNP Q9ZAG3
B	163	LEU	-	EXPRESSION TAG	UNP Q9ZAG3

*Continued on next page...*

*Continued from previous page...*

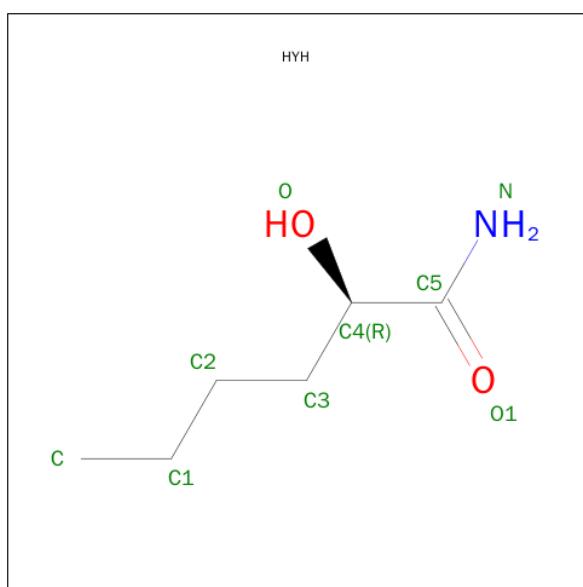
Chain	Residue	Modelled	Actual	Comment	Reference
B	164	ASN	-	EXPRESSION TAG	UNP Q9ZAG3
B	165	SER	-	EXPRESSION TAG	UNP Q9ZAG3
B	166	ALA	-	EXPRESSION TAG	UNP Q9ZAG3
B	167	VAL	-	EXPRESSION TAG	UNP Q9ZAG3
B	168	ASP	-	EXPRESSION TAG	UNP Q9ZAG3
B	169	HIS	-	EXPRESSION TAG	UNP Q9ZAG3
B	170	HIS	-	EXPRESSION TAG	UNP Q9ZAG3
B	171	HIS	-	EXPRESSION TAG	UNP Q9ZAG3
B	172	HIS	-	EXPRESSION TAG	UNP Q9ZAG3
B	173	HIS	-	EXPRESSION TAG	UNP Q9ZAG3
B	174	HIS	-	EXPRESSION TAG	UNP Q9ZAG3
C	1	MET	-	EXPRESSION TAG	UNP Q9ZAG3
C	2	ALA	-	EXPRESSION TAG	UNP Q9ZAG3
C	5	CYS	ILE	ENGINEERED MUTATION	UNP Q9ZAG3
C	15	PRO	SER	ENGINEERED MUTATION	UNP Q9ZAG3
C	19	LYS	ALA	ENGINEERED MUTATION	UNP Q9ZAG3
C	76	LYS	THR	ENGINEERED MUTATION	UNP Q9ZAG3
C	84	CYS	GLU	ENGINEERED MUTATION	UNP Q9ZAG3
C	85	VAL	THR	ENGINEERED MUTATION	UNP Q9ZAG3
C	89	CYS	GLY	ENGINEERED MUTATION	UNP Q9ZAG3
C	91	CYS	SER	ENGINEERED MUTATION	UNP Q9ZAG3
C	92	LYS	ASN	ENGINEERED MUTATION	UNP Q9ZAG3
C	96	PHE	TYR	ENGINEERED MUTATION	UNP Q9ZAG3
C	124	ASP	GLU	ENGINEERED MUTATION	UNP Q9ZAG3
C	150	LYS	-	EXPRESSION TAG	UNP Q9ZAG3
C	151	LEU	-	EXPRESSION TAG	UNP Q9ZAG3
C	152	GLY	-	EXPRESSION TAG	UNP Q9ZAG3
C	153	PRO	-	EXPRESSION TAG	UNP Q9ZAG3
C	154	GLU	-	EXPRESSION TAG	UNP Q9ZAG3
C	155	GLN	-	EXPRESSION TAG	UNP Q9ZAG3
C	156	LYS	-	EXPRESSION TAG	UNP Q9ZAG3
C	157	LEU	-	EXPRESSION TAG	UNP Q9ZAG3
C	158	ILE	-	EXPRESSION TAG	UNP Q9ZAG3
C	159	SER	-	EXPRESSION TAG	UNP Q9ZAG3
C	160	GLU	-	EXPRESSION TAG	UNP Q9ZAG3
C	161	GLU	-	EXPRESSION TAG	UNP Q9ZAG3
C	162	ASP	-	EXPRESSION TAG	UNP Q9ZAG3
C	163	LEU	-	EXPRESSION TAG	UNP Q9ZAG3
C	164	ASN	-	EXPRESSION TAG	UNP Q9ZAG3
C	165	SER	-	EXPRESSION TAG	UNP Q9ZAG3
C	166	ALA	-	EXPRESSION TAG	UNP Q9ZAG3
C	167	VAL	-	EXPRESSION TAG	UNP Q9ZAG3

*Continued on next page...*

*Continued from previous page...*

Chain	Residue	Modelled	Actual	Comment	Reference
C	168	ASP	-	EXPRESSION TAG	UNP Q9ZAG3
C	169	HIS	-	EXPRESSION TAG	UNP Q9ZAG3
C	170	HIS	-	EXPRESSION TAG	UNP Q9ZAG3
C	171	HIS	-	EXPRESSION TAG	UNP Q9ZAG3
C	172	HIS	-	EXPRESSION TAG	UNP Q9ZAG3
C	173	HIS	-	EXPRESSION TAG	UNP Q9ZAG3
C	174	HIS	-	EXPRESSION TAG	UNP Q9ZAG3

- Molecule 2 is (2R)-2-HYDROXYHEXANAMIDE (three-letter code: HYH) (formula:  $C_6H_{13}NO_2$ ).



Mol	Chain	Residues	Atoms	ZeroOcc	AltConf
2	A	1	Total C N O 9 6 1 2	0	0
2	B	1	Total C N O 9 6 1 2	0	0
2	C	1	Total C N O 9 6 1 2	0	0

- Molecule 3 is water.

Mol	Chain	Residues	Atoms	ZeroOcc	AltConf
3	A	54	Total O 54 54	0	0
3	B	66	Total O 66 66	0	0

*Continued on next page...*

*Continued from previous page...*

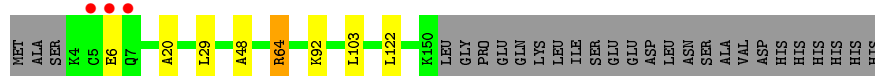
Mol	Chain	Residues	Atoms		ZeroOcc	AltConf
3	C	89	Total	O	0	0
			89	89		



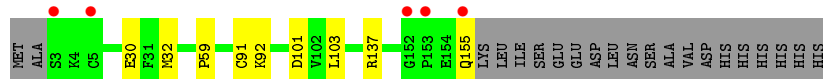
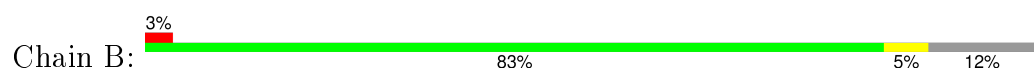
### 3 Residue-property plots [i](#)

These plots are drawn for all protein, RNA and DNA chains in the entry. The first graphic for a chain summarises the proportions of errors displayed in the second graphic. The second graphic shows the sequence view annotated by issues in geometry and electron density. Residues are color-coded according to the number of geometric quality criteria for which they contain at least one outlier: green = 0, yellow = 1, orange = 2 and red = 3 or more. A red dot above a residue indicates a poor fit to the electron density ( $\text{RSRZ} > 2$ ). Stretches of 2 or more consecutive residues without any outlier are shown as a green connector. Residues present in the sample, but not in the model, are shown in grey.

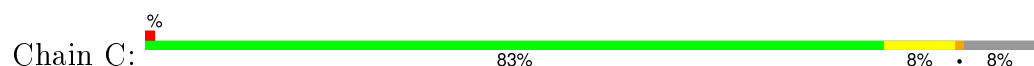
- Molecule 1: Limonene-1,2-epoxide hydrolase



- Molecule 1: Limonene-1,2-epoxide hydrolase



- Molecule 1: Limonene-1,2-epoxide hydrolase



## 4 Data and refinement statistics

Property	Value	Source
Space group	P 32 2 1	Depositor
Cell constants a, b, c, $\alpha$ , $\beta$ , $\gamma$	87.69Å 87.69Å 108.91Å 90.00° 90.00° 120.00°	Depositor
Resolution (Å)	44.25 – 1.80 44.25 – 1.80	Depositor EDS
% Data completeness (in resolution range)	99.4 (44.25-1.80) 99.4 (44.25-1.80)	Depositor EDS
$R_{merge}$	0.07	Depositor
$R_{sym}$	0.04	Depositor
$\langle I/\sigma(I) \rangle$ <sup>1</sup>	1.70 (at 1.79Å)	Xtriage
Refinement program	REFMAC 5.8.0073	Depositor
R, $R_{free}$	0.160 , 0.207 0.173 , 0.214	Depositor DCC
$R_{free}$ test set	2280 reflections (5.32%)	DCC
Wilson B-factor (Å <sup>2</sup> )	23.1	Xtriage
Anisotropy	0.023	Xtriage
Bulk solvent $k_{sol}$ (e/Å <sup>3</sup> ), $B_{sol}$ (Å <sup>2</sup> )	0.38 , 43.5	EDS
Estimated twinning fraction	0.033 for -h,-k,l	Xtriage
L-test for twinning <sup>2</sup>	$\langle  L  \rangle = 0.49$ , $\langle L^2 \rangle = 0.32$	Xtriage
Outliers	0 of 45165 reflections	Xtriage
$F_o, F_c$ correlation	0.97	EDS
Total number of atoms	3854	wwPDB-VP
Average B, all atoms (Å <sup>2</sup> )	27.0	wwPDB-VP

Xtriage's analysis on translational NCS is as follows: *The largest off-origin peak in the Patterson function is 11.19% of the height of the origin peak. No significant pseudotranslation is detected.*

<sup>1</sup>Intensities estimated from amplitudes.

<sup>2</sup>Theoretical values of  $\langle |L| \rangle$ ,  $\langle L^2 \rangle$  for acentric reflections are 0.5, 0.375 respectively for untwinned datasets, and 0.333, 0.2 for perfectly twinned datasets.

## 5 Model quality ⓘ

### 5.1 Standard geometry ⓘ

Bond lengths and bond angles in the following residue types are not validated in this section: HYH

The Z score for a bond length (or angle) is the number of standard deviations the observed value is removed from the expected value. A bond length (or angle) with  $|Z| > 5$  is considered an outlier worth inspection. RMSZ is the root-mean-square of all Z scores of the bond lengths (or angles).

Mol	Chain	Bond lengths		Bond angles	
		RMSZ	$\# Z  > 5$	RMSZ	$\# Z  > 5$
1	A	1.00	0/1196	1.03	2/1619 (0.1%)
1	B	1.00	0/1234	1.01	5/1671 (0.3%)
1	C	1.07	1/1280 (0.1%)	1.00	3/1734 (0.2%)
All	All	1.02	1/3710 (0.0%)	1.01	10/5024 (0.2%)

All (1) bond length outliers are listed below:

Mol	Chain	Res	Type	Atoms	Z	Observed(Å)	Ideal(Å)
1	C	49	GLU	CD-OE1	5.27	1.31	1.25

The worst 5 of 10 bond angle outliers are listed below:

Mol	Chain	Res	Type	Atoms	Z	Observed(°)	Ideal(°)
1	A	64	ARG	NE-CZ-NH1	9.33	124.97	120.30
1	C	91	CYS	CB-CA-C	-6.86	96.69	110.40
1	C	24	ASP	CB-CG-OD1	6.45	124.10	118.30
1	A	64	ARG	NE-CZ-NH2	-5.91	117.34	120.30
1	B	91[A]	CYS	CB-CA-C	-5.88	98.64	110.40

There are no chirality outliers.

There are no planarity outliers.

### 5.2 Too-close contacts ⓘ

In the following table, the Non-H and H(model) columns list the number of non-hydrogen atoms and hydrogen atoms in the chain respectively. The H(added) column lists the number of hydrogen atoms added and optimized by MolProbity. The Clashes column lists the number of clashes within the asymmetric unit, whereas Symm-Clashes lists symmetry related clashes.

Mol	Chain	Non-H	H(model)	H(added)	Clashes	Symm-Clashes
1	A	1162	0	1152	5	0
1	B	1202	0	1187	9	0
1	C	1254	0	1236	7	0
2	A	9	0	13	2	0
2	B	9	0	13	2	0
2	C	9	0	13	0	0
3	A	54	0	0	2	0
3	B	66	0	0	3	0
3	C	89	0	0	0	0
All	All	3854	0	3614	22	0

The all-atom clashscore is defined as the number of clashes found per 1000 atoms (including hydrogen atoms). The all-atom clashscore for this structure is 3.

The worst 5 of 22 close contacts within the same asymmetric unit are listed below, sorted by their clash magnitude.

Atom-1	Atom-2	Interatomic distance (Å)	Clash overlap (Å)
2:A:201:HYH:H3	3:A:353:HOH:O	1.67	0.94
1:A:6:GLU:O	3:A:347:HOH:O	2.09	0.69
1:B:155:GLN:OE1	3:B:363:HOH:O	2.10	0.69
1:C:135:ASP:OD2	1:C:138:GLU:HG3	2.03	0.58
1:C:123:THR:HG23	1:C:123:THR:O	2.04	0.57

There are no symmetry-related clashes.

## 5.3 Torsion angles ⓘ

### 5.3.1 Protein backbone ⓘ

In the following table, the Percentiles column shows the percent Ramachandran outliers of the chain as a percentile score with respect to all X-ray entries followed by that with respect to entries of similar resolution.

The Analysed column shows the number of residues for which the backbone conformation was analysed, and the total number of residues.

Mol	Chain	Analysed	Favoured	Allowed	Outliers	Percentiles	
1	A	148/174 (85%)	145 (98%)	2 (1%)	1 (1%)	26	11
1	B	153/174 (88%)	147 (96%)	6 (4%)	0	100	100
1	C	158/174 (91%)	157 (99%)	0	1 (1%)	30	14

*Continued on next page...*

*Continued from previous page...*

Mol	Chain	Analysed	Favoured	Allowed	Outliers	Percentiles	
All	All	459/522 (88%)	449 (98%)	8 (2%)	2 (0%)	39	23

All (2) Ramachandran outliers are listed below:

Mol	Chain	Res	Type
1	A	92	LYS
1	C	92	LYS

### 5.3.2 Protein sidechains ⓘ

In the following table, the Percentiles column shows the percent sidechain outliers of the chain as a percentile score with respect to all X-ray entries followed by that with respect to entries of similar resolution.

The Analysed column shows the number of residues for which the sidechain conformation was analysed, and the total number of residues.

Mol	Chain	Analysed	Rotameric	Outliers	Percentiles	
1	A	127/148 (86%)	127 (100%)	0	100	100
1	B	131/148 (88%)	131 (100%)	0	100	100
1	C	136/148 (92%)	135 (99%)	1 (1%)	88	86
All	All	394/444 (89%)	393 (100%)	1 (0%)	94	94

All (1) residues with a non-rotameric sidechain are listed below:

Mol	Chain	Res	Type
1	C	64	ARG

Some sidechains can be flipped to improve hydrogen bonding and reduce clashes. There are no such sidechains identified.

### 5.3.3 RNA ⓘ

There are no RNA molecules in this entry.

## 5.4 Non-standard residues in protein, DNA, RNA chains ⓘ

There are no non-standard protein/DNA/RNA residues in this entry.

## 5.5 Carbohydrates

There are no carbohydrates in this entry.

## 5.6 Ligand geometry

3 ligands are modelled in this entry.

In the following table, the Counts columns list the number of bonds (or angles) for which Mogul statistics could be retrieved, the number of bonds (or angles) that are observed in the model and the number of bonds (or angles) that are defined in the chemical component dictionary. The Link column lists molecule types, if any, to which the group is linked. The Z score for a bond length (or angle) is the number of standard deviations the observed value is removed from the expected value. A bond length (or angle) with  $|Z| > 2$  is considered an outlier worth inspection. RMSZ is the root-mean-square of all Z scores of the bond lengths (or angles).

Mol	Type	Chain	Res	Link	Bond lengths			Bond angles		
					Counts	RMSZ	$\# Z  > 2$	Counts	RMSZ	$\# Z  > 2$
2	HYH	A	201	-	7,8,8	0.52	0	7,9,9	2.41	2 (28%)
2	HYH	B	201	-	7,8,8	0.70	0	7,9,9	3.23	2 (28%)
2	HYH	C	201	-	7,8,8	1.08	0	7,9,9	3.99	3 (42%)

In the following table, the Chirals column lists the number of chiral outliers, the number of chiral centers analysed, the number of these observed in the model and the number defined in the chemical component dictionary. Similar counts are reported in the Torsion and Rings columns. '-' means no outliers of that kind were identified.

Mol	Type	Chain	Res	Link	Chirals	Torsions	Rings
2	HYH	A	201	-	-	0/8/8/8	0/0/0/0
2	HYH	B	201	-	-	0/8/8/8	0/0/0/0
2	HYH	C	201	-	-	0/8/8/8	0/0/0/0

There are no bond length outliers.

The worst 5 of 7 bond angle outliers are listed below:

Mol	Chain	Res	Type	Atoms	Z	Observed(°)	Ideal(°)
2	C	201	HYH	O1-C5-C4	-5.00	115.16	119.10
2	B	201	HYH	O1-C5-C4	-3.78	116.11	119.10
2	C	201	HYH	O-C4-C3	2.58	116.81	109.53
2	A	201	HYH	O-C4-C3	2.66	117.04	109.53
2	A	201	HYH	O1-C5-C4	5.07	123.10	119.10

There are no chirality outliers.

There are no torsion outliers.

There are no ring outliers.

2 monomers are involved in 4 short contacts:

Mol	Chain	Res	Type	Clashes	Symm-Clashes
2	A	201	HYH	2	0
2	B	201	HYH	2	0

## 5.7 Other polymers [i](#)

There are no such residues in this entry.

## 5.8 Polymer linkage issues [i](#)

There are no chain breaks in this entry.

## 6 Fit of model and data [i](#)

### 6.1 Protein, DNA and RNA chains [i](#)

In the following table, the column labelled ‘#RSRZ> 2’ contains the number (and percentage) of RSRZ outliers, followed by percent RSRZ outliers for the chain as percentile scores relative to all X-ray entries and entries of similar resolution. The OWAB column contains the minimum, median, 95<sup>th</sup> percentile and maximum values of the occupancy-weighted average B-factor per residue. The column labelled ‘Q< 0.9’ lists the number of (and percentage) of residues with an average occupancy less than 0.9.

Mol	Chain	Analysed	<RSRZ>	#RSRZ>2	OWAB(Å <sup>2</sup> )	Q<0.9
1	A	147/174 (84%)	-0.48	3 (2%) 68 64	16, 26, 52, 79	0
1	B	153/174 (87%)	-0.44	5 (3%) 50 44	16, 25, 64, 87	0
1	C	160/174 (91%)	-0.45	1 (0%) 90 88	13, 22, 42, 72	0
All	All	460/522 (88%)	-0.46	9 (1%) 68 64	13, 25, 52, 87	0

The worst 5 of 9 RSRZ outliers are listed below:

Mol	Chain	Res	Type	RSRZ
1	B	3	SER	5.6
1	B	5	CYS	3.2
1	A	6	GLU	3.1
1	C	164	ASN	2.9
1	B	155	GLN	2.7

### 6.2 Non-standard residues in protein, DNA, RNA chains [i](#)

There are no non-standard protein/DNA/RNA residues in this entry.

### 6.3 Carbohydrates [i](#)

There are no carbohydrates in this entry.

### 6.4 Ligands [i](#)

In the following table, the Atoms column lists the number of modelled atoms in the group and the number defined in the chemical component dictionary. LLDF column lists the quality of electron density of the group with respect to its neighbouring residues in protein, DNA or RNA chains. The B-factors column lists the minimum, median, 95<sup>th</sup> percentile and maximum values of B factors



of atoms in the group. The column labelled 'Q< 0.9' lists the number of atoms with occupancy less than 0.9.

Mol	Type	Chain	Res	Atoms	RSCC	RSR	LLDF	B-factors( $\text{\AA}^2$ )	Q<0.9
2	HYH	A	201	9/9	0.88	0.13	7.23	38,40,47,48	0
2	HYH	C	201	9/9	0.91	0.12	4.45	26,30,37,49	0
2	HYH	B	201	9/9	0.94	0.10	1.10	33,38,42,52	0

## 6.5 Other polymers [i](#)

There are no such residues in this entry.