



Full wwPDB X-ray Structure Validation Report ⓘ

Feb 1, 2016 – 08:16 PM GMT

PDB ID : 4RFM
Title : ITK kinase domain in complex with compound 1 N-{1-[(1,1-dioxo-1-thian-2-yl)(phenyl)methyl]-1H-pyrazol-4-yl}-5,5-difluoro-5a-methyl-1H,4H,4aH,5H,5aH,6H-cyclopropa[f]indazole-3-carboxamide
Authors : McEwan, P.A.; Barker, J.J.; Eigenbrot, C.
Deposited on : 2014-09-26
Resolution : 2.10 Å(reported)

This is a Full wwPDB X-ray Structure Validation Report for a publicly released PDB entry.
We welcome your comments at validation@mail.wwpdb.org
A user guide is available at
<http://wwpdb.org/validation/2016/XrayValidationReportHelp>
with specific help available everywhere you see the ⓘ symbol.

The following versions of software and data (see [references ⓘ](#)) were used in the production of this report:

MolProbity : 4.02b-467
Mogul : 1.7 (RC4), CSD as536be (2015)
Xtriage (Phenix) : 1.9-1692
EDS : rb-20026688
Percentile statistics : 20151230.v01 (using entries in the PDB archive December 30th 2015)
Refmac : 5.8.0135
CCP4 : 6.5.0
Ideal geometry (proteins) : Engh & Huber (2001)
Ideal geometry (DNA, RNA) : Parkinson et al. (1996)
Validation Pipeline (wwPDB-VP) : trunk26865

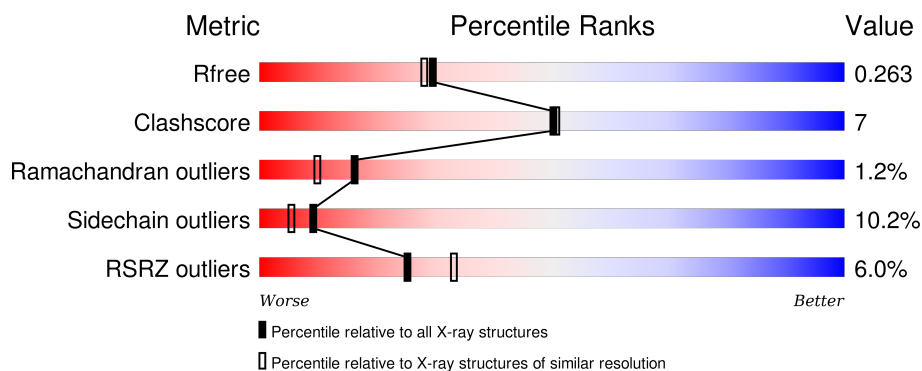
1 Overall quality at a glance

The following experimental techniques were used to determine the structure:

X-RAY DIFFRACTION

The reported resolution of this entry is 2.10 Å.

Percentile scores (ranging between 0-100) for global validation metrics of the entry are shown in the following graphic. The table shows the number of entries on which the scores are based.



Metric	Whole archive (#Entries)	Similar resolution (#Entries, resolution range(Å))
R_{free}	91344	3939 (2.10-2.10)
Clashscore	102246	4460 (2.10-2.10)
Ramachandran outliers	100387	4413 (2.10-2.10)
Sidechain outliers	100360	4414 (2.10-2.10)
RSRZ outliers	91569	3948 (2.10-2.10)

The table below summarises the geometric issues observed across the polymeric chains and their fit to the electron density. The red, orange, yellow and green segments on the lower bar indicate the fraction of residues that contain outliers for ≥ 3 , 2, 1 and 0 types of geometric quality criteria. A grey segment represents the fraction of residues that are not modelled. The numeric value for each fraction is indicated below the corresponding segment, with a dot representing fractions $\leq 5\%$. The upper red bar (where present) indicates the fraction of residues that have poor fit to the electron density. The numeric value is given above the bar.

Mol	Chain	Length	Quality of chain
1	A	266	<div> <div>6%</div> <div> <div></div> <div>78%</div> <div>12%</div> <div>• • 6%</div> </div> </div>

2 Entry composition [i](#)

There are 3 unique types of molecules in this entry. The entry contains 2120 atoms, of which 0 are hydrogens and 0 are deuteriums.

In the tables below, the ZeroOcc column contains the number of atoms modelled with zero occupancy, the AltConf column contains the number of residues with at least one atom in alternate conformation and the Trace column contains the number of residues modelled with at most 2 atoms.

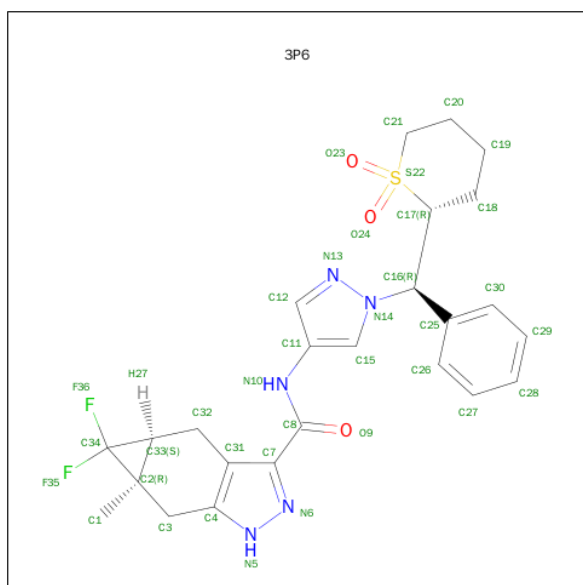
- Molecule 1 is a protein called Tyrosine-protein kinase ITK/TSK.

Mol	Chain	Residues	Atoms					ZeroOcc	AltConf	Trace
			Total	C	N	O	S			
1	A	249	1997	1279	334	368	16	0	2	0

There are 5 discrepancies between the modelled and reference sequences:

Chain	Residue	Modelled	Actual	Comment	Reference
A	355	GLY	-	EXPRESSION TAG	UNP Q08881
A	356	SER	-	EXPRESSION TAG	UNP Q08881
A	477	SER	CYS	ENGINEERED MUTATION	UNP Q08881
A	614	ALA	GLU	ENGINEERED MUTATION	UNP Q08881
A	617	ALA	GLU	ENGINEERED MUTATION	UNP Q08881

- Molecule 2 is (4AS,5AR)-N-{1-[(R)-[(2R)-1,1-DIOXIDOTETRAHYDRO-2H-THIOPYRAN-2-YL](PHENYL)METHYL]-1H-PYRAZOL-4-YL}-5,5-DIFLUORO-5A-METHYL-1,4,4A,5,5A,6-HEXAHYDROCYCLOPROPA[F]INDAZOLE-3-CARBOXAMIDE (three-letter code: 3P6) (formula: C₂₅H₂₇F₂N₅O₃S).



Mol	Chain	Residues	Atoms						ZeroOcc	AltConf
2	A	1	Total	C	F	N	O	S	0	0
			36	25	2	5	3	1		

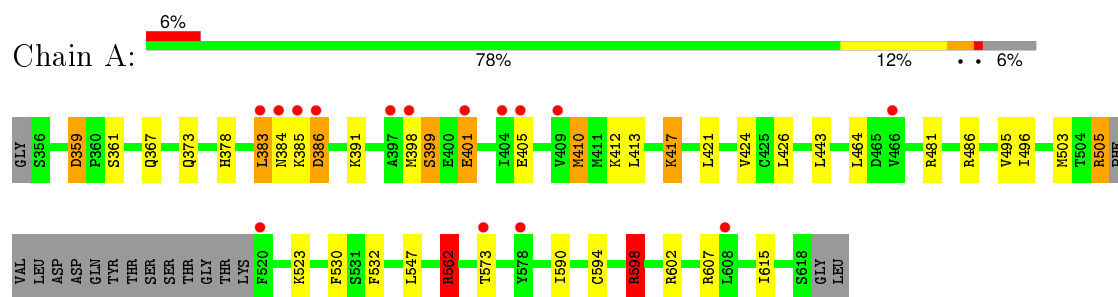
- Molecule 3 is water.

Mol	Chain	Residues	Atoms		ZeroOcc	AltConf
3	A	87	Total	O	0	0
			87	87		

3 Residue-property plots [i](#)

These plots are drawn for all protein, RNA and DNA chains in the entry. The first graphic for a chain summarises the proportions of errors displayed in the second graphic. The second graphic shows the sequence view annotated by issues in geometry and electron density. Residues are color-coded according to the number of geometric quality criteria for which they contain at least one outlier: green = 0, yellow = 1, orange = 2 and red = 3 or more. A red dot above a residue indicates a poor fit to the electron density ($\text{RSRZ} > 2$). Stretches of 2 or more consecutive residues without any outlier are shown as a green connector. Residues present in the sample, but not in the model, are shown in grey.

- Molecule 1: Tyrosine-protein kinase ITK/TSK



4 Data and refinement statistics

Property	Value	Source
Space group	P 1 21 1	Depositor
Cell constants a, b, c, α , β , γ	40.01Å 69.56Å 47.35Å 90.00° 113.39° 90.00°	Depositor
Resolution (Å)	32.47 – 2.10 32.47 – 2.10	Depositor EDS
% Data completeness (in resolution range)	96.9 (32.47-2.10) 96.9 (32.47-2.10)	Depositor EDS
R_{merge}	(Not available)	Depositor
R_{sym}	(Not available)	Depositor
$\langle I/\sigma(I) \rangle$ ¹	1.70 (at 2.10Å)	Xtriage
Refinement program	REFMAC 5.7.0032	Depositor
R, R_{free}	0.203 , 0.264 0.210 , 0.263	Depositor DCC
R_{free} test set	675 reflections (5.25%)	DCC
Wilson B-factor (Å ²)	35.6	Xtriage
Anisotropy	0.056	Xtriage
Bulk solvent k_{sol} (e/Å ³), B_{sol} (Å ²)	0.35 , 37.8	EDS
Estimated twinning fraction	0.000 for h,-k,-h-l	Xtriage
L-test for twinning ²	$\langle L \rangle = 0.55$, $\langle L^2 \rangle = 0.39$	Xtriage
Outliers	1 of 13526 reflections (0.007%)	Xtriage
F_o, F_c correlation	0.95	EDS
Total number of atoms	2120	wwPDB-VP
Average B, all atoms (Å ²)	37.0	wwPDB-VP

Xtriage's analysis on translational NCS is as follows: *The largest off-origin peak in the Patterson function is 10.48% of the height of the origin peak. No significant pseudotranslation is detected.*

¹Intensities estimated from amplitudes.

²Theoretical values of $\langle |L| \rangle$, $\langle L^2 \rangle$ for acentric reflections are 0.5, 0.375 respectively for untwinned datasets, and 0.333, 0.2 for perfectly twinned datasets.

5 Model quality [i](#)

5.1 Standard geometry [i](#)

Bond lengths and bond angles in the following residue types are not validated in this section: 3P6

The Z score for a bond length (or angle) is the number of standard deviations the observed value is removed from the expected value. A bond length (or angle) with $|Z| > 5$ is considered an outlier worth inspection. RMSZ is the root-mean-square of all Z scores of the bond lengths (or angles).

Mol	Chain	Bond lengths		Bond angles	
		RMSZ	$\# Z > 5$	RMSZ	$\# Z > 5$
1	A	0.81	0/2046	0.93	3/2764 (0.1%)

Chiral center outliers are detected by calculating the chiral volume of a chiral center and verifying if the center is modelled as a planar moiety or with the opposite hand. A planarity outlier is detected by checking planarity of atoms in a peptide group, atoms in a mainchain group or atoms of a sidechain that are expected to be planar.

Mol	Chain	#Chirality outliers	#Planarity outliers
1	A	0	1

There are no bond length outliers.

All (3) bond angle outliers are listed below:

Mol	Chain	Res	Type	Atoms	Z	Observed($^{\circ}$)	Ideal($^{\circ}$)
1	A	562	ARG	NE-CZ-NH2	8.80	124.70	120.30
1	A	598	ARG	NE-CZ-NH2	7.23	123.91	120.30
1	A	481	ARG	NE-CZ-NH1	-6.85	116.88	120.30

There are no chirality outliers.

All (1) planarity outliers are listed below:

Mol	Chain	Res	Type	Group
1	A	383	LEU	Peptide

5.2 Too-close contacts [i](#)

In the following table, the Non-H and H(model) columns list the number of non-hydrogen atoms and hydrogen atoms in the chain respectively. The H(added) column lists the number of hydrogen atoms added and optimized by MolProbity. The Clashes column lists the number of clashes within

the asymmetric unit, whereas Symm-Clashes lists symmetry related clashes.

Mol	Chain	Non-H	H(model)	H(added)	Clashes	Symm-Clashes
1	A	1997	0	1956	28	0
2	A	36	0	26	0	0
3	A	87	0	0	4	0
All	All	2120	0	1982	28	0

The all-atom clashscore is defined as the number of clashes found per 1000 atoms (including hydrogen atoms). The all-atom clashscore for this structure is 7.

All (28) close contacts within the same asymmetric unit are listed below, sorted by their clash magnitude.

Atom-1	Atom-2	Interatomic distance (Å)	Clash overlap (Å)
1:A:562:ARG:HG3	1:A:562:ARG:HH21	1.44	0.81
1:A:523:LYS:HE3	3:A:867:HOH:O	1.86	0.76
1:A:401:GLU:HA	1:A:401:GLU:OE1	1.88	0.73
1:A:590:ILE:HD11	1:A:615:ILE:CD1	2.19	0.71
1:A:523:LYS:CE	3:A:867:HOH:O	2.39	0.70
1:A:590:ILE:HD11	1:A:615:ILE:HD13	1.82	0.60
1:A:398:MET:O	1:A:399:SER:CB	2.52	0.57
1:A:598:ARG:HG3	1:A:598:ARG:HH21	1.69	0.56
1:A:359:ASP:OD2	1:A:361:SER:OG	2.24	0.55
1:A:384:ASN:HB3	1:A:385:LYS:HG2	1.91	0.52
1:A:398:MET:O	1:A:399:SER:HB3	2.10	0.50
1:A:384:ASN:HB3	1:A:385:LYS:HA	1.95	0.48
1:A:417:LYS:HE2	1:A:495:VAL:CG2	2.44	0.47
1:A:384:ASN:HD22	1:A:384:ASN:N	2.13	0.47
1:A:562:ARG:NH2	1:A:562:ARG:HG3	2.18	0.46
1:A:562:ARG:HH21	1:A:562:ARG:CG	2.22	0.46
1:A:590:ILE:HD11	1:A:615:ILE:HD12	1.96	0.46
1:A:523:LYS:HE2	3:A:867:HOH:O	2.10	0.45
1:A:598:ARG:HH21	1:A:598:ARG:CG	2.30	0.45
1:A:378:HIS:HD2	3:A:810:HOH:O	1.98	0.45
1:A:505:ARG:CD	1:A:505:ARG:N	2.80	0.43
1:A:359:ASP:CG	1:A:361:SER:HG	2.22	0.42
1:A:594:CYS:O	1:A:602:ARG:HD3	2.18	0.42
1:A:443:LEU:HD13	1:A:496:ILE:HD12	2.02	0.42
1:A:410:MET:HE3	1:A:421:LEU:HB2	2.02	0.41
1:A:410:MET:HE2	1:A:421:LEU:HD22	2.02	0.41
1:A:547:LEU:C	1:A:547:LEU:HD23	2.41	0.41
1:A:386:ASP:OD1	1:A:386:ASP:N	2.53	0.41

There are no symmetry-related clashes.

5.3 Torsion angles [i](#)

5.3.1 Protein backbone [i](#)

In the following table, the Percentiles column shows the percent Ramachandran outliers of the chain as a percentile score with respect to all X-ray entries followed by that with respect to entries of similar resolution.

The Analysed column shows the number of residues for which the backbone conformation was analysed, and the total number of residues.

Mol	Chain	Analysed	Favoured	Allowed	Outliers	Percentiles
1	A	247/266 (93%)	237 (96%)	7 (3%)	3 (1%)	16 10

All (3) Ramachandran outliers are listed below:

Mol	Chain	Res	Type
1	A	383	LEU
1	A	413	LEU
1	A	399	SER

5.3.2 Protein sidechains [i](#)

In the following table, the Percentiles column shows the percent sidechain outliers of the chain as a percentile score with respect to all X-ray entries followed by that with respect to entries of similar resolution.

The Analysed column shows the number of residues for which the sidechain conformation was analysed, and the total number of residues.

Mol	Chain	Analysed	Rotameric	Outliers	Percentiles
1	A	217/231 (94%)	195 (90%)	22 (10%)	9 5

All (22) residues with a non-rotameric sidechain are listed below:

Mol	Chain	Res	Type
1	A	359	ASP
1	A	367	GLN
1	A	373	GLN
1	A	386	ASP
1	A	391	LYS

Continued on next page...

Continued from previous page...

Mol	Chain	Res	Type
1	A	401	GLU
1	A	405	GLU
1	A	410	MET
1	A	412	LYS
1	A	417	LYS
1	A	424	VAL
1	A	426	LEU
1	A	464	LEU
1	A	486	ARG
1	A	503	MET
1	A	505	ARG
1	A	530	PHE
1	A	532	PHE
1	A	562	ARG
1	A	573	THR
1	A	598	ARG
1	A	607	ARG

Some sidechains can be flipped to improve hydrogen bonding and reduce clashes. All (5) such sidechains are listed below:

Mol	Chain	Res	Type
1	A	373	GLN
1	A	378	HIS
1	A	384	ASN
1	A	420	GLN
1	A	493	ASN

5.3.3 RNA ⓘ

There are no RNA molecules in this entry.

5.4 Non-standard residues in protein, DNA, RNA chains ⓘ

There are no non-standard protein/DNA/RNA residues in this entry.

5.5 Carbohydrates ⓘ

There are no carbohydrates in this entry.

5.6 Ligand geometry ⓘ

1 ligand is modelled in this entry.

In the following table, the Counts columns list the number of bonds (or angles) for which Mogul statistics could be retrieved, the number of bonds (or angles) that are observed in the model and the number of bonds (or angles) that are defined in the chemical component dictionary. The Link column lists molecule types, if any, to which the group is linked. The Z score for a bond length (or angle) is the number of standard deviations the observed value is removed from the expected value. A bond length (or angle) with $|Z| > 2$ is considered an outlier worth inspection. RMSZ is the root-mean-square of all Z scores of the bond lengths (or angles).

Mol	Type	Chain	Res	Link	Bond lengths			Bond angles		
					Counts	RMSZ	$\# Z > 2$	Counts	RMSZ	$\# Z > 2$
2	3P6	A	701	-	36,41,41	1.33	9 (25%)	30,65,65	1.51	7 (23%)

In the following table, the Chirals column lists the number of chiral outliers, the number of chiral centers analysed, the number of these observed in the model and the number defined in the chemical component dictionary. Similar counts are reported in the Torsion and Rings columns. '-' means no outliers of that kind were identified.

Mol	Type	Chain	Res	Link	Chirals	Torsions	Rings
2	3P6	A	701	-	-	0/8/61/61	0/5/6/6

All (9) bond length outliers are listed below:

Mol	Chain	Res	Type	Atoms	Z	Observed(Å)	Ideal(Å)
2	A	701	3P6	C32-C33	-2.87	1.50	1.53
2	A	701	3P6	C16-N14	-2.46	1.45	1.49
2	A	701	3P6	C32-C31	-2.34	1.47	1.51
2	A	701	3P6	C3-C4	-2.30	1.48	1.50
2	A	701	3P6	C7-C8	-2.19	1.47	1.50
2	A	701	3P6	C1-C2	-2.17	1.49	1.54
2	A	701	3P6	C4-N5	2.03	1.36	1.33
2	A	701	3P6	C21-S22	2.31	1.81	1.77
2	A	701	3P6	C12-C11	2.85	1.42	1.37

All (7) bond angle outliers are listed below:

Mol	Chain	Res	Type	Atoms	Z	Observed(°)	Ideal(°)
2	A	701	3P6	C15-C11-C12	-2.56	103.99	106.67
2	A	701	3P6	O24-S22-C21	-2.40	106.59	109.37
2	A	701	3P6	C15-N14-C16	-2.07	123.32	125.57
2	A	701	3P6	C31-C4-N5	-2.07	106.08	110.61
2	A	701	3P6	C20-C21-S22	2.03	115.39	112.49

Continued on next page...

Continued from previous page...

Mol	Chain	Res	Type	Atoms	Z	Observed(°)	Ideal(°)
2	A	701	3P6	O9-C8-C7	2.75	124.75	121.00
2	A	701	3P6	O23-S22-O24	4.12	121.76	117.90

There are no chirality outliers.

There are no torsion outliers.

There are no ring outliers.

No monomer is involved in short contacts.

5.7 Other polymers [i](#)

There are no such residues in this entry.

5.8 Polymer linkage issues [i](#)

There are no chain breaks in this entry.

6 Fit of model and data [i](#)

6.1 Protein, DNA and RNA chains [i](#)

In the following table, the column labelled ‘#RSRZ> 2’ contains the number (and percentage) of RSRZ outliers, followed by percent RSRZ outliers for the chain as percentile scores relative to all X-ray entries and entries of similar resolution. The OWAB column contains the minimum, median, 95th percentile and maximum values of the occupancy-weighted average B-factor per residue. The column labelled ‘Q< 0.9’ lists the number of (and percentage) of residues with an average occupancy less than 0.9.

Mol	Chain	Analysed	<RSRZ>	#RSRZ>2		OWAB(Å ²)	Q<0.9
1	A	249/266 (93%)	0.30	15 (6%)	25 33	24, 34, 61, 85	0

All (15) RSRZ outliers are listed below:

Mol	Chain	Res	Type	RSRZ
1	A	384	ASN	5.1
1	A	520	PHE	4.1
1	A	398	MET	3.2
1	A	385	LYS	3.0
1	A	383	LEU	2.9
1	A	397	ALA	2.7
1	A	386	ASP	2.7
1	A	573	THR	2.6
1	A	608	LEU	2.6
1	A	409	VAL	2.5
1	A	578[A]	TYR	2.5
1	A	466	VAL	2.4
1	A	405	GLU	2.4
1	A	404	ILE	2.2
1	A	401	GLU	2.1

6.2 Non-standard residues in protein, DNA, RNA chains [i](#)

There are no non-standard protein/DNA/RNA residues in this entry.

6.3 Carbohydrates [i](#)

There are no carbohydrates in this entry.

6.4 Ligands [i](#)

In the following table, the Atoms column lists the number of modelled atoms in the group and the number defined in the chemical component dictionary. LLDF column lists the quality of electron density of the group with respect to its neighbouring residues in protein, DNA or RNA chains. The B-factors column lists the minimum, median, 95th percentile and maximum values of B factors of atoms in the group. The column labelled 'Q< 0.9' lists the number of atoms with occupancy less than 0.9.

Mol	Type	Chain	Res	Atoms	RSCC	RSR	LLDF	B-factors(\AA^2)	Q<0.9
2	3P6	A	701	36/36	0.95	0.11	-0.32	27,29,38,41	0

6.5 Other polymers [i](#)

There are no such residues in this entry.