



wwPDB X-ray Structure Validation Summary Report ⓘ

Feb 1, 2016 – 12:42 PM GMT

PDB ID : 3RMZ
Title : Crystal Structure of the W199F-MauG/pre-Methylamine Dehydrogenase Complex
Authors : Jensen, L.M.R.; Wilmot, C.M.
Deposited on : 2011-04-21
Resolution : 1.72 Å(reported)

This is a wwPDB X-ray Structure Validation Summary Report for a publicly released PDB entry.
We welcome your comments at validation@mail.wwpdb.org
A user guide is available at
<http://wwpdb.org/validation/2016/XrayValidationReportHelp>
with specific help available everywhere you see the ⓘ symbol.

The following versions of software and data (see [references ⓘ](#)) were used in the production of this report:

MolProbity : 4.02b-467
Mogul : 1.7 (RC4), CSD as536be (2015)
Xtriage (Phenix) : 1.9-1692
EDS : rb-20026688
Percentile statistics : 20151230.v01 (using entries in the PDB archive December 30th 2015)
Refmac : 5.8.0135
CCP4 : 6.5.0
Ideal geometry (proteins) : Engh & Huber (2001)
Ideal geometry (DNA, RNA) : Parkinson et al. (1996)
Validation Pipeline (wwPDB-VP) : trunk26865

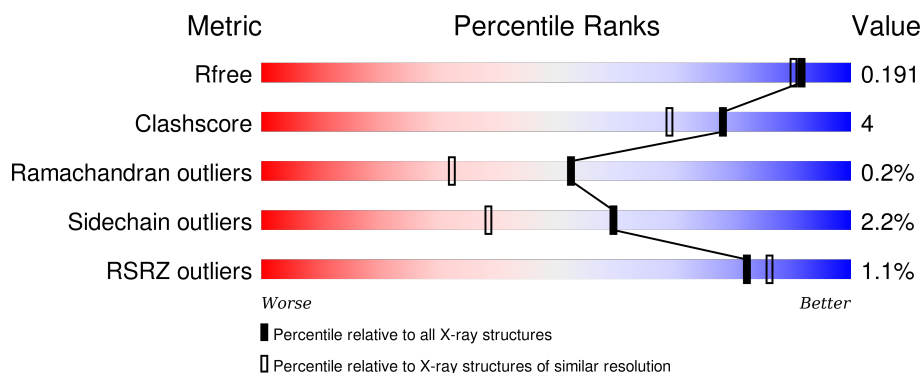
1 Overall quality at a glance

The following experimental techniques were used to determine the structure:

X-RAY DIFFRACTION

The reported resolution of this entry is 1.72 Å.

Percentile scores (ranging between 0-100) for global validation metrics of the entry are shown in the following graphic. The table shows the number of entries on which the scores are based.



Metric	Whole archive (#Entries)	Similar resolution (#Entries, resolution range(Å))
R_{free}	91344	3998 (1.74-1.70)
Clashscore	102246	4425 (1.74-1.70)
Ramachandran outliers	100387	4360 (1.74-1.70)
Sidechain outliers	100360	4360 (1.74-1.70)
RSRZ outliers	91569	4010 (1.74-1.70)

The table below summarises the geometric issues observed across the polymeric chains and their fit to the electron density. The red, orange, yellow and green segments on the lower bar indicate the fraction of residues that contain outliers for ≥ 3 , 2, 1 and 0 types of geometric quality criteria. A grey segment represents the fraction of residues that are not modelled. The numeric value for each fraction is indicated below the corresponding segment, with a dot representing fractions $\leq 5\%$. The upper red bar (where present) indicates the fraction of residues that have poor fit to the electron density. The numeric value is given above the bar.

Mol	Chain	Length	Quality of chain
1	A	373	<div> <div style="width: 100%; height: 10px; background: linear-gradient(to right, red 1%, green 85%, yellow 9%, orange 2%, grey 2%);"></div> <div style="display: flex; justify-content: space-between; width: 100%;"> 85% 9% .. 5% </div> </div>
1	B	373	<div> <div style="width: 100%; height: 10px; background: linear-gradient(to right, red 1%, green 88%, yellow 6%, orange 2%, grey 2%);"></div> <div style="display: flex; justify-content: space-between; width: 100%;"> 88% 6% • 5% </div> </div>
2	C	137	<div> <div style="width: 100%; height: 10px; background: linear-gradient(to right, red 2%, green 85%, yellow 9%, orange 2%, grey 2%);"></div> <div style="display: flex; justify-content: space-between; width: 100%;"> 85% 9% • • </div> </div>
2	E	137	<div> <div style="width: 100%; height: 10px; background: linear-gradient(to right, green 81%, yellow 9%, orange 9%, grey 1%);"></div> <div style="display: flex; justify-content: space-between; width: 100%;"> 81% 9% 9% </div> </div>
3	D	386	<div> <div style="width: 100%; height: 10px; background: linear-gradient(to right, red 1%, green 86%, yellow 11%, orange 2%, grey 2%);"></div> <div style="display: flex; justify-content: space-between; width: 100%;"> 86% 11% • • </div> </div>

Continued on next page...

Continued from previous page...

Mol	Chain	Length	Quality of chain
3	F	386	<div> <div>%</div> <div> </div> <div>84% 12% ..</div> </div>

The following table lists non-polymeric compounds, carbohydrate monomers and non-standard residues in protein, DNA, RNA chains that are outliers for geometric or electron-density-fit criteria:

Mol	Type	Chain	Res	Chirality	Geometry	Clashes	Electron density
11	P6G	F	388	-	-	-	X
12	MES	F	389	-	-	-	X
8	PEG	D	387	-	-	-	X

2 Entry composition

There are 13 unique types of molecules in this entry. The entry contains 15575 atoms, of which 0 are hydrogens and 0 are deuteriums.

In the tables below, the ZeroOcc column contains the number of atoms modelled with zero occupancy, the AltConf column contains the number of residues with at least one atom in alternate conformation and the Trace column contains the number of residues modelled with at most 2 atoms.

- Molecule 1 is a protein called Methylamine utilization protein MauG.

Mol	Chain	Residues	Atoms					ZeroOcc	AltConf	Trace
1	A	354	Total	C	N	O	S	0	7	0
			2773	1734	496	532	11			
1	B	355	Total	C	N	O	S	0	3	0
			2757	1721	494	531	11			

There are 14 discrepancies between the modelled and reference sequences:

Chain	Residue	Modelled	Actual	Comment	Reference
A	199	PHE	TRP	ENGINEERED MUTATION	UNP Q51658
A	368	HIS	-	EXPRESSION TAG	UNP Q51658
A	369	HIS	-	EXPRESSION TAG	UNP Q51658
A	370	HIS	-	EXPRESSION TAG	UNP Q51658
A	371	HIS	-	EXPRESSION TAG	UNP Q51658
A	372	HIS	-	EXPRESSION TAG	UNP Q51658
A	373	HIS	-	EXPRESSION TAG	UNP Q51658
B	199	PHE	TRP	ENGINEERED MUTATION	UNP Q51658
B	368	HIS	-	EXPRESSION TAG	UNP Q51658
B	369	HIS	-	EXPRESSION TAG	UNP Q51658
B	370	HIS	-	EXPRESSION TAG	UNP Q51658
B	371	HIS	-	EXPRESSION TAG	UNP Q51658
B	372	HIS	-	EXPRESSION TAG	UNP Q51658
B	373	HIS	-	EXPRESSION TAG	UNP Q51658

- Molecule 2 is a protein called Methylamine dehydrogenase light chain.

Mol	Chain	Residues	Atoms					ZeroOcc	AltConf	Trace
2	C	131	Total	C	N	O	S	0	5	0
			1032	638	180	199	15			
2	E	124	Total	C	N	O	S	0	4	0
			968	603	161	189	15			

There are 12 discrepancies between the modelled and reference sequences:

Chain	Residue	Modelled	Actual	Comment	Reference
C	132	HIS	-	EXPRESSION TAG	UNP A1BBA0
C	133	HIS	-	EXPRESSION TAG	UNP A1BBA0
C	134	HIS	-	EXPRESSION TAG	UNP A1BBA0
C	135	HIS	-	EXPRESSION TAG	UNP A1BBA0
C	136	HIS	-	EXPRESSION TAG	UNP A1BBA0
C	137	HIS	-	EXPRESSION TAG	UNP A1BBA0
E	132	HIS	-	EXPRESSION TAG	UNP A1BBA0
E	133	HIS	-	EXPRESSION TAG	UNP A1BBA0
E	134	HIS	-	EXPRESSION TAG	UNP A1BBA0
E	135	HIS	-	EXPRESSION TAG	UNP A1BBA0
E	136	HIS	-	EXPRESSION TAG	UNP A1BBA0
E	137	HIS	-	EXPRESSION TAG	UNP A1BBA0

- Molecule 3 is a protein called Methylamine dehydrogenase heavy chain.

Mol	Chain	Residues	Atoms					ZeroOcc	AltConf	Trace
3	D	376	Total	C	N	O	S	0	7	0
			2957	1882	504	562	9			
3	F	376	Total	C	N	O	S	0	9	0
			2971	1888	507	567	9			

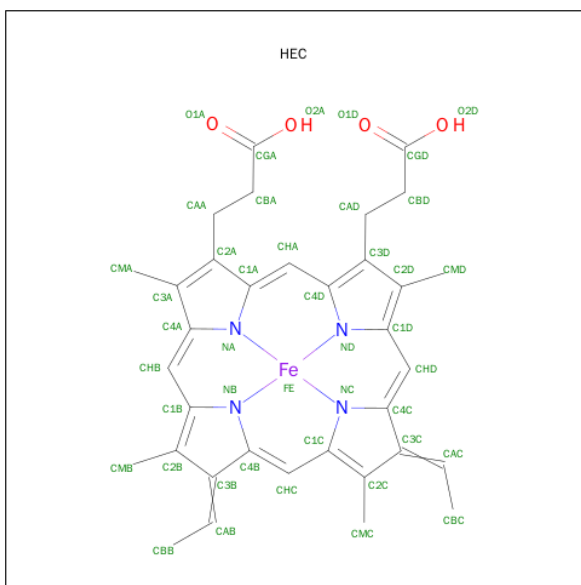
- Molecule 4 is CALCIUM ION (three-letter code: CA) (formula: Ca).

Mol	Chain	Residues	Atoms		ZeroOcc	AltConf
4	B	1	Total	Ca	0	0
			1	1		
4	A	1	Total	Ca	0	0
			1	1		

- Molecule 5 is SODIUM ION (three-letter code: NA) (formula: Na).

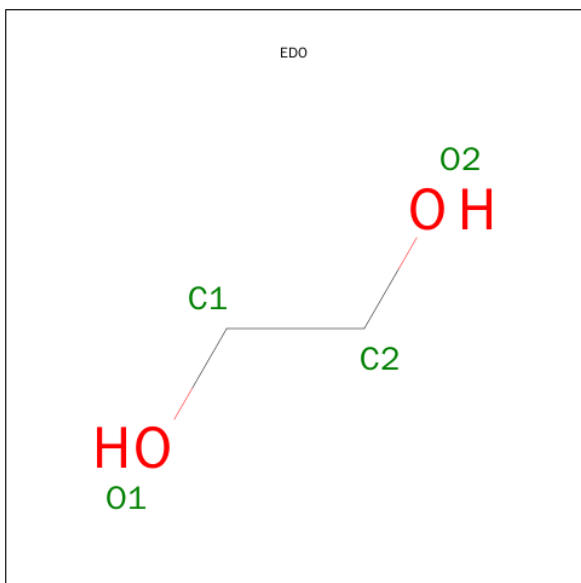
Mol	Chain	Residues	Atoms		ZeroOcc	AltConf
5	B	2	Total	Na	0	0
			2	2		
5	A	2	Total	Na	0	0
			2	2		

- Molecule 6 is HEME C (three-letter code: HEC) (formula: C₃₄H₃₄FeN₄O₄).



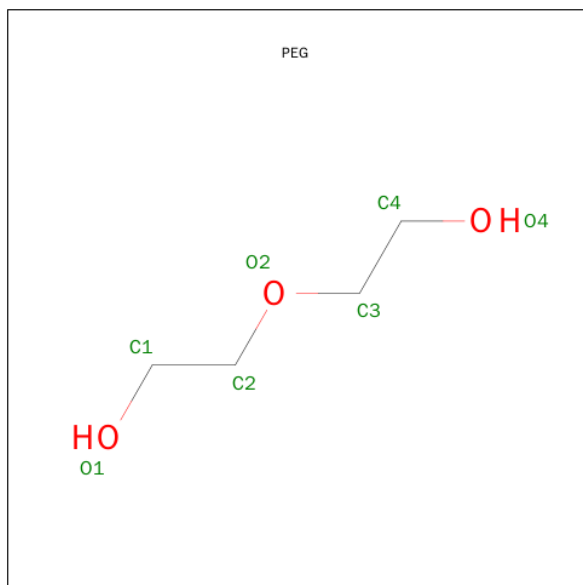
Mol	Chain	Residues	Atoms					ZeroOcc	AltConf
6	A	1	Total 43	C 34	Fe 1	N 4	O 4	0	0
6	A	1	Total 43	C 34	Fe 1	N 4	O 4	0	0
6	B	1	Total 43	C 34	Fe 1	N 4	O 4	0	0
6	B	1	Total 43	C 34	Fe 1	N 4	O 4	0	0

- Molecule 7 is 1,2-ETHANEDIOL (three-letter code: EDO) (formula: $\text{C}_2\text{H}_6\text{O}_2$).



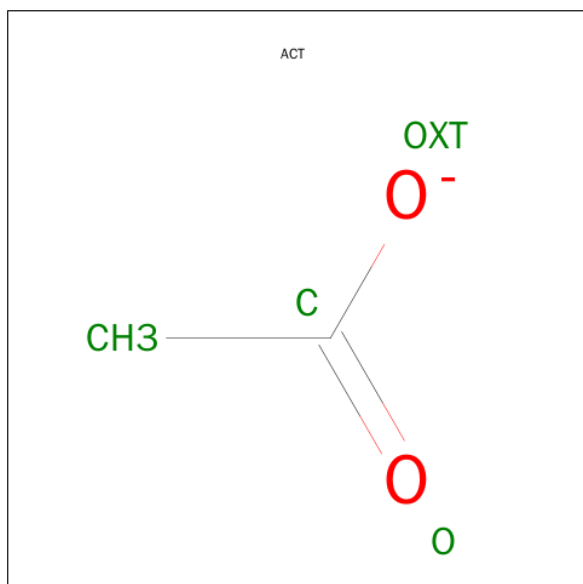
Mol	Chain	Residues	Atoms			ZeroOcc	AltConf
7	A	1	Total	C	O	0	0
			4	2	2		
7	B	1	Total	C	O	0	0
			4	2	2		

- Molecule 8 is DI(HYDROXYETHYL)ETHER (three-letter code: PEG) (formula: $C_4H_{10}O_3$).



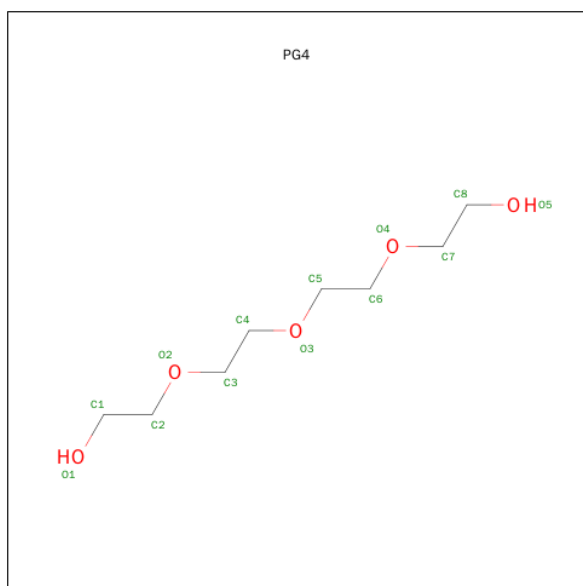
Mol	Chain	Residues	Atoms			ZeroOcc	AltConf
8	D	1	Total	C	O	0	0
			7	4	3		

- Molecule 9 is ACETATE ION (three-letter code: ACT) (formula: $C_2H_3O_2$).



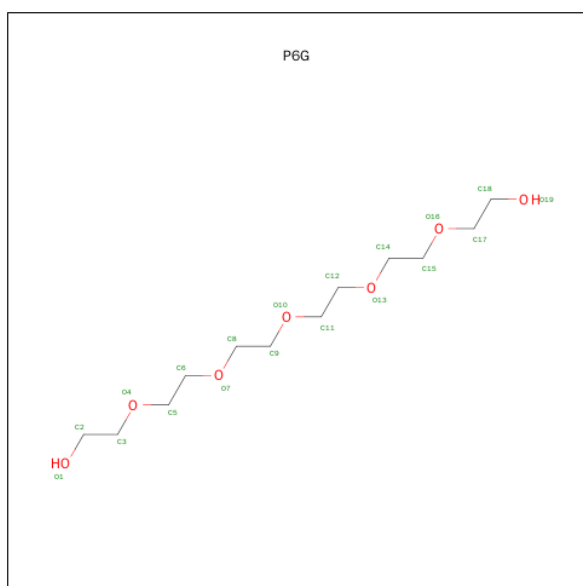
Mol	Chain	Residues	Atoms			ZeroOcc	AltConf
9	D	1	Total	C	O	0	0
			4	2	2		

- Molecule 10 is TETRAETHYLENE GLYCOL (three-letter code: PG4) (formula: $C_8H_{18}O_5$).



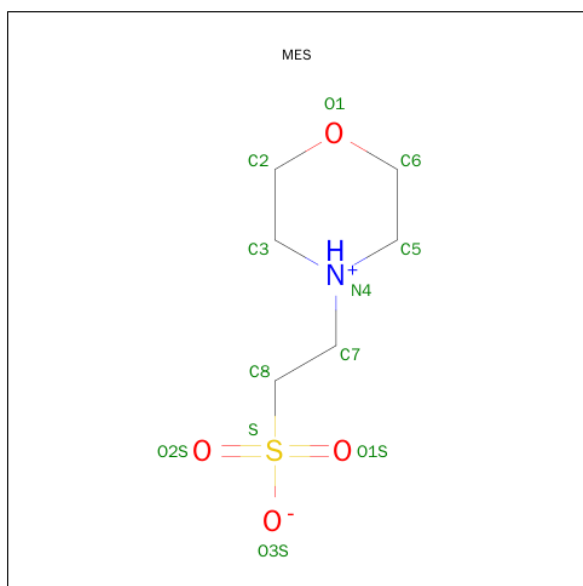
Mol	Chain	Residues	Atoms			ZeroOcc	AltConf
10	F	1	Total	C	O	0	0
			13	8	5		

- Molecule 11 is HEXAETHYLENE GLYCOL (three-letter code: P6G) (formula: $C_{12}H_{26}O_7$).



Mol	Chain	Residues	Atoms			ZeroOcc	AltConf
11	F	1	Total	C	O	0	0
			19	12	7		

- Molecule 12 is 2-(N-MORPHOLINO)-ETHANESULFONIC ACID (three-letter code: MES) (formula: C₆H₁₃NO₄S).



Mol	Chain	Residues	Atoms					ZeroOcc	AltConf
12	F	1	Total	C	N	O	S	0	0
			12	6	1	4	1		

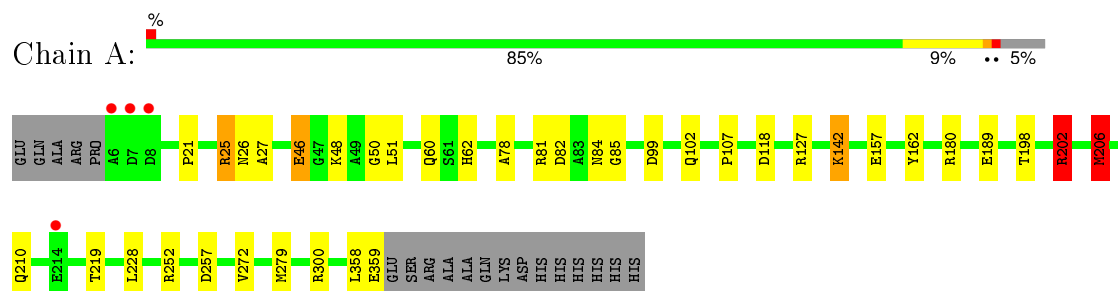
- Molecule 13 is water.

Mol	Chain	Residues	Atoms		ZeroOcc	AltConf
13	A	381	Total	O	0	0
			381	381		
13	B	387	Total	O	0	0
			387	387		
13	C	134	Total	O	0	0
			134	134		
13	D	371	Total	O	0	0
			371	371		
13	E	132	Total	O	0	0
			132	132		
13	F	471	Total	O	0	0
			471	471		

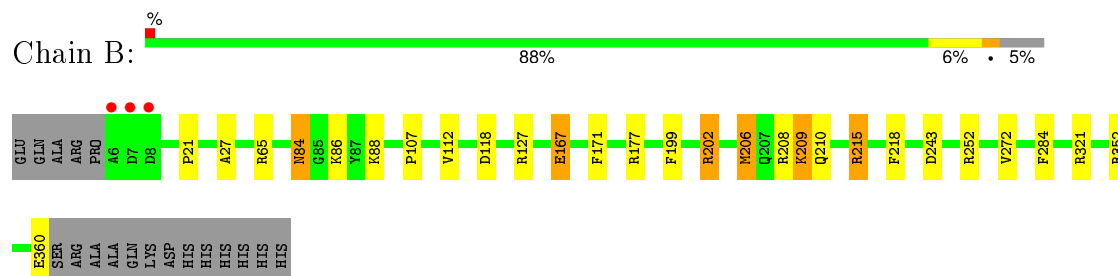
3 Residue-property plots [i](#)

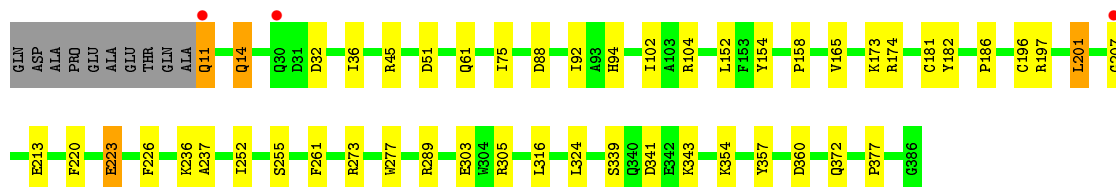
These plots are drawn for all protein, RNA and DNA chains in the entry. The first graphic for a chain summarises the proportions of errors displayed in the second graphic. The second graphic shows the sequence view annotated by issues in geometry and electron density. Residues are color-coded according to the number of geometric quality criteria for which they contain at least one outlier: green = 0, yellow = 1, orange = 2 and red = 3 or more. A red dot above a residue indicates a poor fit to the electron density ($\text{RSRZ} > 2$). Stretches of 2 or more consecutive residues without any outlier are shown as a green connector. Residues present in the sample, but not in the model, are shown in grey.

- Molecule 1: Methylamine utilization protein MauG



- Molecule 1: Methylamine utilization protein MauG





4 Data and refinement statistics

Property	Value	Source
Space group	P 1	Depositor
Cell constants a, b, c, α , β , γ	55.53Å 83.52Å 107.78Å 109.94° 91.54° 105.78°	Depositor
Resolution (Å)	39.58 – 1.72 39.57 – 1.72	Depositor EDS
% Data completeness (in resolution range)	94.8 (39.58-1.72) 83.9 (39.57-1.72)	Depositor EDS
R_{merge}	(Not available)	Depositor
R_{sym}	0.06	Depositor
$\langle I/\sigma(I) \rangle$ ¹	1.27 (at 1.72Å)	Xtriage
Refinement program	REFMAC 5.5.0109	Depositor
R, R_{free}	0.138 , 0.181 0.149 , 0.191	Depositor DCC
R_{free} test set	8789 reflections (5.32%)	DCC
Wilson B-factor (Å ²)	17.3	Xtriage
Anisotropy	0.058	Xtriage
Bulk solvent k_{sol} (e/Å ³), B_{sol} (Å ²)	0.35 , 37.8	EDS
Estimated twinning fraction	No twinning to report.	Xtriage
L-test for twinning ²	$\langle L \rangle = 0.49$, $\langle L^2 \rangle = 0.33$	Xtriage
Outliers	0 of 173879 reflections	Xtriage
F_o, F_c correlation	0.97	EDS
Total number of atoms	15575	wwPDB-VP
Average B, all atoms (Å ²)	20.0	wwPDB-VP

Xtriage's analysis on translational NCS is as follows: *The largest off-origin peak in the Patterson function is 4.44% of the height of the origin peak. No significant pseudotranslation is detected.*

¹Intensities estimated from amplitudes.

²Theoretical values of $\langle |L| \rangle$, $\langle L^2 \rangle$ for acentric reflections are 0.5, 0.375 respectively for untwinned datasets, and 0.333, 0.2 for perfectly twinned datasets.

5 Model quality ⓘ

5.1 Standard geometry ⓘ

Bond lengths and bond angles in the following residue types are not validated in this section: MES, NA, CA, HEC, EDO, PG4, P6G, 0AF, ACT, PEG

The Z score for a bond length (or angle) is the number of standard deviations the observed value is removed from the expected value. A bond length (or angle) with $|Z| > 5$ is considered an outlier worth inspection. RMSZ is the root-mean-square of all Z scores of the bond lengths (or angles).

Mol	Chain	Bond lengths		Bond angles	
		RMSZ	$\# Z > 5$	RMSZ	$\# Z > 5$
1	A	1.21	5/2854 (0.2%)	1.14	15/3870 (0.4%)
1	B	1.26	7/2826 (0.2%)	1.13	12/3833 (0.3%)
2	C	1.20	0/1063	1.14	3/1447 (0.2%)
2	E	1.27	3/990 (0.3%)	1.14	1/1351 (0.1%)
3	D	1.19	4/3055 (0.1%)	1.11	12/4163 (0.3%)
3	F	1.33	8/3075 (0.3%)	1.19	16/4189 (0.4%)
All	All	1.25	27/13863 (0.2%)	1.14	59/18853 (0.3%)

The worst 5 of 27 bond length outliers are listed below:

Mol	Chain	Res	Type	Atoms	Z	Observed(Å)	Ideal(Å)
3	F	213	GLU	CD-OE1	8.11	1.34	1.25
1	A	162	TYR	CD2-CE2	6.42	1.49	1.39
1	B	360	GLU	CB-CG	6.31	1.64	1.52
1	B	360	GLU	CG-CD	6.21	1.61	1.51
1	B	199	PHE	CD2-CE2	6.19	1.51	1.39

The worst 5 of 59 bond angle outliers are listed below:

Mol	Chain	Res	Type	Atoms	Z	Observed(°)	Ideal(°)
1	B	206	MET	CG-SD-CE	-15.39	75.58	100.20
1	A	206	MET	CG-SD-CE	-9.45	85.08	100.20
3	D	70	ARG	NE-CZ-NH1	9.31	124.95	120.30
3	F	197	ARG	NE-CZ-NH1	-8.81	115.90	120.30
1	B	208	ARG	NE-CZ-NH1	-8.62	115.99	120.30

There are no chirality outliers.

There are no planarity outliers.

5.2 Too-close contacts ⓘ

In the following table, the Non-H and H(model) columns list the number of non-hydrogen atoms and hydrogen atoms in the chain respectively. The H(added) column lists the number of hydrogen atoms added and optimized by MolProbity. The Clashes column lists the number of clashes within the asymmetric unit, whereas Symm-Clashes lists symmetry related clashes.

Mol	Chain	Non-H	H(model)	H(added)	Clashes	Symm-Clashes
1	A	2773	0	2664	23	0
1	B	2757	0	2636	13	0
2	C	1032	0	918	15	0
2	E	968	0	880	8	0
3	D	2957	0	2871	27	0
3	F	2971	0	2881	19	0
4	A	1	0	0	0	0
4	B	1	0	0	0	0
5	A	2	0	0	0	0
5	B	2	0	0	0	0
6	A	86	0	60	2	0
6	B	86	0	60	2	0
7	A	4	0	6	0	0
7	B	4	0	6	0	0
8	D	7	0	10	3	0
9	D	4	0	3	0	0
10	F	13	0	18	3	0
11	F	19	0	26	6	0
12	F	12	0	12	0	0
13	A	381	0	0	3	0
13	B	387	0	0	4	0
13	C	134	0	0	2	0
13	D	371	0	0	4	0
13	E	132	0	0	1	0
13	F	471	0	0	7	0
All	All	15575	0	13051	96	0

The all-atom clashscore is defined as the number of clashes found per 1000 atoms (including hydrogen atoms). The all-atom clashscore for this structure is 4.

The worst 5 of 96 close contacts within the same asymmetric unit are listed below, sorted by their clash magnitude.

Atom-1	Atom-2	Interatomic distance (Å)	Clash overlap (Å)
3:D:372[A]:GLN:OE1	13:D:1255:HOH:O	1.83	0.94
11:F:388:P6G:H21	13:F:903:HOH:O	1.70	0.90

Continued on next page...

Continued from previous page...

Atom-1	Atom-2	Interatomic distance (Å)	Clash overlap (Å)
3:F:255:SER:HA	10:F:387:PG4:H32	1.56	0.86
3:D:255:SER:HB2	8:D:387:PEG:H22	1.58	0.85
1:B:107:PRO:HG3	13:B:1931:HOH:O	1.81	0.81

There are no symmetry-related clashes.

5.3 Torsion angles [i](#)

5.3.1 Protein backbone [i](#)

In the following table, the Percentiles column shows the percent Ramachandran outliers of the chain as a percentile score with respect to all X-ray entries followed by that with respect to entries of similar resolution.

The Analysed column shows the number of residues for which the backbone conformation was analysed, and the total number of residues.

Mol	Chain	Analysed	Favoured	Allowed	Outliers	Percentiles	
1	A	359/373 (96%)	349 (97%)	10 (3%)	0	100	100
1	B	356/373 (95%)	346 (97%)	10 (3%)	0	100	100
2	C	133/137 (97%)	128 (96%)	4 (3%)	1 (1%)	24	7
2	E	125/137 (91%)	122 (98%)	3 (2%)	0	100	100
3	D	381/386 (99%)	366 (96%)	13 (3%)	2 (0%)	34	15
3	F	383/386 (99%)	370 (97%)	12 (3%)	1 (0%)	46	26
All	All	1737/1792 (97%)	1681 (97%)	52 (3%)	4 (0%)	52	32

All (4) Ramachandran outliers are listed below:

Mol	Chain	Res	Type
2	C	130	ALA
3	D	102[A]	ILE
3	D	102[B]	ILE
3	F	102	ILE

5.3.2 Protein sidechains [i](#)

In the following table, the Percentiles column shows the percent sidechain outliers of the chain as a percentile score with respect to all X-ray entries followed by that with respect to entries of similar

resolution.

The Analysed column shows the number of residues for which the sidechain conformation was analysed, and the total number of residues.

Mol	Chain	Analysed	Rotameric	Outliers	Percentiles	
1	A	282/292 (97%)	277 (98%)	5 (2%)	66	48
1	B	279/292 (96%)	275 (99%)	4 (1%)	74	58
2	C	115/112 (103%)	111 (96%)	4 (4%)	43	19
2	E	107/112 (96%)	104 (97%)	3 (3%)	51	28
3	D	311/311 (100%)	304 (98%)	7 (2%)	58	37
3	F	313/311 (101%)	303 (97%)	10 (3%)	46	23
All	All	1407/1430 (98%)	1374 (98%)	33 (2%)	60	37

5 of 33 residues with a non-rotameric sidechain are listed below:

Mol	Chain	Res	Type
3	D	158	PRO
3	D	316	LEU
3	F	303[B]	GLU
3	D	160	PRO
3	D	223	GLU

Some sidechains can be flipped to improve hydrogen bonding and reduce clashes. 5 of 14 such sidechains are listed below:

Mol	Chain	Res	Type
1	B	84	ASN
1	B	91	GLN
3	D	30	GLN
1	B	29	GLN
2	C	136	HIS

5.3.3 RNA ⓘ

There are no RNA molecules in this entry.

5.4 Non-standard residues in protein, DNA, RNA chains ⓘ

2 non-standard protein/DNA/RNA residues are modelled in this entry.

In the following table, the Counts columns list the number of bonds (or angles) for which Mogul

statistics could be retrieved, the number of bonds (or angles) that are observed in the model and the number of bonds (or angles) that are defined in the chemical component dictionary. The Link column lists molecule types, if any, to which the group is linked. The Z score for a bond length (or angle) is the number of standard deviations the observed value is removed from the expected value. A bond length (or angle) with $|Z| > 2$ is considered an outlier worth inspection. RMSZ is the root-mean-square of all Z scores of the bond lengths (or angles).

Mol	Type	Chain	Res	Link	Bond lengths			Bond angles		
					Counts	RMSZ	# $ Z > 2$	Counts	RMSZ	# $ Z > 2$
2	0AF	C	57	2	13,16,17	1.95	4 (30%)	10,22,24	2.37	5 (50%)
2	0AF	E	57	2	13,16,17	1.98	6 (46%)	10,22,24	1.93	2 (20%)

In the following table, the Chirals column lists the number of chiral outliers, the number of chiral centers analysed, the number of these observed in the model and the number defined in the chemical component dictionary. Similar counts are reported in the Torsion and Rings columns. '-' means no outliers of that kind were identified.

Mol	Type	Chain	Res	Link	Chirals	Torsions	Rings
2	0AF	C	57	2	-	0/3/6/8	0/2/2/2
2	0AF	E	57	2	-	0/3/6/8	0/2/2/2

The worst 5 of 10 bond length outliers are listed below:

Mol	Chain	Res	Type	Atoms	Z	Observed(Å)	Ideal(Å)
2	C	57	0AF	CB-CA	-3.47	1.46	1.53
2	E	57	0AF	CZ2-CE2	-3.01	1.38	1.42
2	C	57	0AF	CZ2-CE2	-2.93	1.38	1.42
2	E	57	0AF	CA-N	-2.89	1.38	1.47
2	C	57	0AF	CA-N	-2.80	1.38	1.47

The worst 5 of 7 bond angle outliers are listed below:

Mol	Chain	Res	Type	Atoms	Z	Observed(°)	Ideal(°)
2	C	57	0AF	CB-CG-CD1	-4.38	122.56	127.97
2	E	57	0AF	CB-CG-CD1	-3.64	123.47	127.97
2	E	57	0AF	O-C-CA	-3.62	116.06	125.49
2	C	57	0AF	O-C-CA	-3.50	116.37	125.49
2	C	57	0AF	O1-CZ2-CE2	-2.16	115.17	119.05

There are no chirality outliers.

There are no torsion outliers.

There are no ring outliers.

1 monomer is involved in 1 short contact:

Mol	Chain	Res	Type	Clashes	Symm-Clashes
2	C	57	0AF	1	0

5.5 Carbohydrates [i](#)

There are no carbohydrates in this entry.

5.6 Ligand geometry [i](#)

Of 17 ligands modelled in this entry, 6 are monoatomic - leaving 11 for Mogul analysis.

In the following table, the Counts columns list the number of bonds (or angles) for which Mogul statistics could be retrieved, the number of bonds (or angles) that are observed in the model and the number of bonds (or angles) that are defined in the chemical component dictionary. The Link column lists molecule types, if any, to which the group is linked. The Z score for a bond length (or angle) is the number of standard deviations the observed value is removed from the expected value. A bond length (or angle) with $|Z| > 2$ is considered an outlier worth inspection. RMSZ is the root-mean-square of all Z scores of the bond lengths (or angles).

Mol	Type	Chain	Res	Link	Bond lengths			Bond angles		
					Counts	RMSZ	# $ Z > 2$	Counts	RMSZ	# $ Z > 2$
7	EDO	A	374	-	3,3,3	0.46	0	2,2,2	0.44	0
6	HEC	A	500	1,13	24,50,50	1.57	5 (20%)	19,82,82	3.32	9 (47%)
6	HEC	A	600	1	24,50,50	2.09	6 (25%)	19,82,82	3.91	8 (42%)
7	EDO	B	374	-	3,3,3	0.51	0	2,2,2	0.05	0
6	HEC	B	500	1,13	24,50,50	2.17	8 (33%)	19,82,82	2.68	8 (42%)
6	HEC	B	600	1	24,50,50	1.49	4 (16%)	19,82,82	3.41	7 (36%)
8	PEG	D	387	-	6,6,6	0.64	0	5,5,5	0.58	0
9	ACT	D	388	-	1,3,3	0.55	0	0,3,3	0.00	-
10	PG4	F	387	-	12,12,12	0.57	0	11,11,11	0.51	0
11	P6G	F	388	-	18,18,18	0.62	0	17,17,17	0.77	0
12	MES	F	389	-	11,12,12	0.58	0	14,16,16	4.38	8 (57%)

In the following table, the Chirals column lists the number of chiral outliers, the number of chiral centers analysed, the number of these observed in the model and the number defined in the chemical component dictionary. Similar counts are reported in the Torsion and Rings columns. '-' means no outliers of that kind were identified.

Mol	Type	Chain	Res	Link	Chirals	Torsions	Rings
7	EDO	A	374	-	-	0/1/1/1	0/0/0/0
6	HEC	A	500	1,13	-	0/6/54/54	0/0/8/8
6	HEC	A	600	1	-	0/6/54/54	0/0/8/8
7	EDO	B	374	-	-	0/1/1/1	0/0/0/0

Continued on next page...

Continued from previous page...

Mol	Type	Chain	Res	Link	Chirals	Torsions	Rings
6	HEC	B	500	1,13	-	0/6/54/54	0/0/8/8
6	HEC	B	600	1	-	0/6/54/54	0/0/8/8
8	PEG	D	387	-	-	0/4/4/4	0/0/0/0
9	ACT	D	388	-	-	0/0/0/0	0/0/0/0
10	PG4	F	387	-	-	0/10/10/10	0/0/0/0
11	P6G	F	388	-	-	0/16/16/16	0/0/0/0
12	MES	F	389	-	-	0/6/14/14	0/1/1/1

The worst 5 of 23 bond length outliers are listed below:

Mol	Chain	Res	Type	Atoms	Z	Observed(Å)	Ideal(Å)
6	B	500	HEC	C3B-C2B	-6.16	1.34	1.40
6	A	600	HEC	C4C-NC	-5.30	1.29	1.36
6	A	600	HEC	C4A-NA	-4.46	1.30	1.36
6	B	500	HEC	C4C-NC	-3.61	1.31	1.36
6	B	500	HEC	C3C-C2C	-3.50	1.37	1.40

The worst 5 of 40 bond angle outliers are listed below:

Mol	Chain	Res	Type	Atoms	Z	Observed(°)	Ideal(°)
6	B	600	HEC	CBB-CAB-C3B	-9.10	107.12	127.35
6	A	500	HEC	CBB-CAB-C3B	-8.84	107.70	127.35
6	A	600	HEC	CBD-CAD-C3D	-8.78	96.80	112.53
6	A	600	HEC	CBB-CAB-C3B	-8.01	109.56	127.35
6	A	600	HEC	CBC-CAC-C3C	-7.49	110.72	127.35

There are no chirality outliers.

There are no torsion outliers.

There are no ring outliers.

5 monomers are involved in 16 short contacts:

Mol	Chain	Res	Type	Clashes	Symm-Clashes
6	A	600	HEC	2	0
6	B	600	HEC	2	0
8	D	387	PEG	3	0
10	F	387	PG4	3	0
11	F	388	P6G	6	0

5.7 Other polymers [i](#)

There are no such residues in this entry.

5.8 Polymer linkage issues [i](#)

There are no chain breaks in this entry.

6 Fit of model and data [i](#)

6.1 Protein, DNA and RNA chains [i](#)

In the following table, the column labelled ‘#RSRZ> 2’ contains the number (and percentage) of RSRZ outliers, followed by percent RSRZ outliers for the chain as percentile scores relative to all X-ray entries and entries of similar resolution. The OWAB column contains the minimum, median, 95th percentile and maximum values of the occupancy-weighted average B-factor per residue. The column labelled ‘Q< 0.9’ lists the number of (and percentage) of residues with an average occupancy less than 0.9.

Mol	Chain	Analysed	<RSRZ>	#RSRZ>2	OWAB(Å ²)	Q<0.9
1	A	354/373 (94%)	-0.52	4 (1%) 82 86	12, 19, 32, 52	0
1	B	355/373 (95%)	-0.48	3 (0%) 87 90	11, 20, 34, 57	0
2	C	130/137 (94%)	-0.16	3 (2%) 64 69	12, 17, 31, 44	0
2	E	123/137 (89%)	-0.27	0 100 100	11, 15, 25, 40	0
3	D	376/386 (97%)	-0.40	5 (1%) 79 83	12, 20, 36, 60	0
3	F	376/386 (97%)	-0.43	3 (0%) 87 90	10, 15, 28, 49	0
All	All	1714/1792 (95%)	-0.42	18 (1%) 82 86	10, 18, 33, 60	0

The worst 5 of 18 RSRZ outliers are listed below:

Mol	Chain	Res	Type	RSRZ
1	A	6	ALA	6.6
1	A	7	ASP	5.2
3	D	208	THR	5.2
1	B	6	ALA	5.0
1	B	7	ASP	4.7

6.2 Non-standard residues in protein, DNA, RNA chains [i](#)

In the following table, the Atoms column lists the number of modelled atoms in the group and the number defined in the chemical component dictionary. LLDF column lists the quality of electron density of the group with respect to its neighbouring residues in protein, DNA or RNA chains. The B-factors column lists the minimum, median, 95th percentile and maximum values of B factors of atoms in the group. The column labelled ‘Q< 0.9’ lists the number of atoms with occupancy less than 0.9.

Mol	Type	Chain	Res	Atoms	RSCC	RSR	LLDF	B-factors(Å ²)	Q<0.9
2	0AF	C	57	15/16	0.97	0.11	-	17,19,22,23	0
2	0AF	E	57	15/16	0.98	0.10	-	13,15,18,20	0

6.3 Carbohydrates [i](#)

There are no carbohydrates in this entry.

6.4 Ligands [i](#)

In the following table, the Atoms column lists the number of modelled atoms in the group and the number defined in the chemical component dictionary. LLDF column lists the quality of electron density of the group with respect to its neighbouring residues in protein, DNA or RNA chains. The B-factors column lists the minimum, median, 95th percentile and maximum values of B factors of atoms in the group. The column labelled 'Q< 0.9' lists the number of atoms with occupancy less than 0.9.

Mol	Type	Chain	Res	Atoms	RSCC	RSR	LLDF	B-factors(Å ²)	Q<0.9
12	MES	F	389	12/12	0.93	0.14	8.16	14,31,38,38	12
8	PEG	D	387	7/7	0.83	0.11	2.49	53,54,55,56	0
11	P6G	F	388	19/19	0.92	0.10	2.34	20,33,52,53	0
4	CA	A	400	1/1	1.00	0.08	1.90	14,14,14,14	0
10	PG4	F	387	13/13	0.87	0.12	1.43	51,55,62,63	0
4	CA	B	400	1/1	1.00	0.08	1.41	13,13,13,13	0
7	EDO	A	374	4/4	0.91	0.11	0.55	40,43,43,46	0
5	NA	A	402	1/1	0.99	0.07	0.32	26,26,26,26	0
6	HEC	B	600	43/43	0.99	0.08	0.19	7,11,14,16	0
6	HEC	A	500	43/43	0.99	0.06	0.11	11,15,18,21	0
6	HEC	B	500	43/43	0.98	0.07	0.08	11,14,17,19	0
6	HEC	A	600	43/43	0.99	0.08	0.01	9,12,15,16	0
7	EDO	B	374	4/4	0.93	0.07	-0.03	36,40,41,43	0
5	NA	B	402	1/1	0.99	0.05	-1.78	24,24,24,24	0
5	NA	B	401	1/1	0.99	0.03	-	22,22,22,22	0
5	NA	A	401	1/1	0.99	0.06	-	23,23,23,23	0
9	ACT	D	388	4/4	0.97	0.06	-	26,27,30,31	0

6.5 Other polymers [i](#)

There are no such residues in this entry.