



# Full wwPDB X-ray Structure Validation Report ⓘ

Feb 1, 2016 – 12:42 PM GMT

PDB ID : 3RU0  
Title : Cocrystal structure of human SMYD3 with inhibitor Sinefungin bound  
Authors : Foreman, K.W.; Brown, M.; Park, F.; Emtage, S.; Harriss, J.; Das, C.; Zhu, L.; Crew, A.; Arnold, L.; Shaaban, S.; Tucker, P.  
Deposited on : 2011-05-04  
Resolution : 1.85 Å(reported)

This is a Full wwPDB X-ray Structure Validation Report for a publicly released PDB entry.  
We welcome your comments at [validation@mail.wwpdb.org](mailto:validation@mail.wwpdb.org)  
A user guide is available at  
<http://wwpdb.org/validation/2016/XrayValidationReportHelp>  
with specific help available everywhere you see the ⓘ symbol.

---

The following versions of software and data (see [references ⓘ](#)) were used in the production of this report:

MolProbity : 4.02b-467  
Mogul : 1.7 (RC4), CSD as536be (2015)  
Xtriage (Phenix) : 1.9-1692  
EDS : rb-20026688  
Percentile statistics : 20151230.v01 (using entries in the PDB archive December 30th 2015)  
Refmac : 5.8.0135  
CCP4 : 6.5.0  
Ideal geometry (proteins) : Engh & Huber (2001)  
Ideal geometry (DNA, RNA) : Parkinson et al. (1996)  
Validation Pipeline (wwPDB-VP) : trunk26865

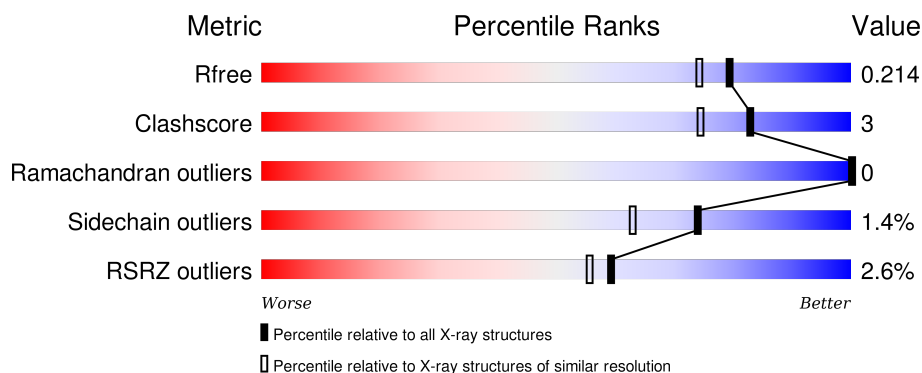
# 1 Overall quality at a glance ⓘ

The following experimental techniques were used to determine the structure:

## *X-RAY DIFFRACTION*

The reported resolution of this entry is 1.85 Å.

Percentile scores (ranging between 0-100) for global validation metrics of the entry are shown in the following graphic. The table shows the number of entries on which the scores are based.



Metric	Whole archive (#Entries)	Similar resolution (#Entries, resolution range(Å))
$R_{free}$	91344	2634 (1.86-1.82)
Clashscore	102246	2862 (1.86-1.82)
Ramachandran outliers	100387	2831 (1.86-1.82)
Sidechain outliers	100360	2832 (1.86-1.82)
RSRZ outliers	91569	2639 (1.86-1.82)

The table below summarises the geometric issues observed across the polymeric chains and their fit to the electron density. The red, orange, yellow and green segments on the lower bar indicate the fraction of residues that contain outliers for  $\geq 3$ , 2, 1 and 0 types of geometric quality criteria. A grey segment represents the fraction of residues that are not modelled. The numeric value for each fraction is indicated below the corresponding segment, with a dot representing fractions  $\leq 5\%$ . The upper red bar (where present) indicates the fraction of residues that have poor fit to the electron density. The numeric value is given above the bar.

Mol	Chain	Length	Quality of chain
1	A	438	<div> <div>3%</div> <div>87%</div> <div>9%</div> <div>.</div> </div>
1	B	438	<div> <div>3%</div> <div>89%</div> <div>7%</div> <div>.</div> </div>

## 2 Entry composition

There are 4 unique types of molecules in this entry. The entry contains 7079 atoms, of which 0 are hydrogens and 0 are deuteriums.

In the tables below, the ZeroOcc column contains the number of atoms modelled with zero occupancy, the AltConf column contains the number of residues with at least one atom in alternate conformation and the Trace column contains the number of residues modelled with at most 2 atoms.

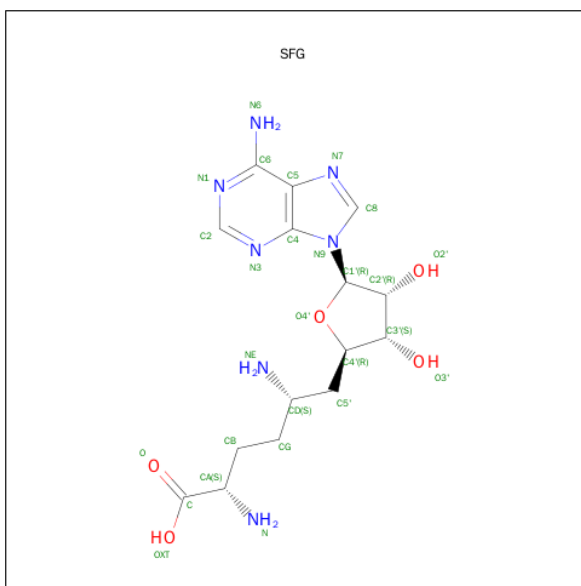
- Molecule 1 is a protein called SET and MYND domain-containing protein 3.

Mol	Chain	Residues	Atoms					ZeroOcc	AltConf	Trace
1	A	425	Total	C	N	O	S	0	3	0
			3310	2095	574	603	38			
1	B	419	Total	C	N	O	S	0	2	0
			3227	2051	555	581	40			

There are 24 discrepancies between the modelled and reference sequences:

Chain	Residue	Modelled	Actual	Comment	Reference
A	-1	MET	-	EXPRESSION TAG	UNP Q9H7B4
A	0	ALA	-	EXPRESSION TAG	UNP Q9H7B4
A	1	LEU	-	EXPRESSION TAG	UNP Q9H7B4
A	13	ASN	LYS	CONFLICT	UNP Q9H7B4
A	429	GLU	-	EXPRESSION TAG	UNP Q9H7B4
A	430	GLY	-	EXPRESSION TAG	UNP Q9H7B4
A	431	HIS	-	EXPRESSION TAG	UNP Q9H7B4
A	432	HIS	-	EXPRESSION TAG	UNP Q9H7B4
A	433	HIS	-	EXPRESSION TAG	UNP Q9H7B4
A	434	HIS	-	EXPRESSION TAG	UNP Q9H7B4
A	435	HIS	-	EXPRESSION TAG	UNP Q9H7B4
A	436	HIS	-	EXPRESSION TAG	UNP Q9H7B4
B	-1	MET	-	EXPRESSION TAG	UNP Q9H7B4
B	0	ALA	-	EXPRESSION TAG	UNP Q9H7B4
B	1	LEU	-	EXPRESSION TAG	UNP Q9H7B4
B	13	ASN	LYS	CONFLICT	UNP Q9H7B4
B	429	GLU	-	EXPRESSION TAG	UNP Q9H7B4
B	430	GLY	-	EXPRESSION TAG	UNP Q9H7B4
B	431	HIS	-	EXPRESSION TAG	UNP Q9H7B4
B	432	HIS	-	EXPRESSION TAG	UNP Q9H7B4
B	433	HIS	-	EXPRESSION TAG	UNP Q9H7B4
B	434	HIS	-	EXPRESSION TAG	UNP Q9H7B4
B	435	HIS	-	EXPRESSION TAG	UNP Q9H7B4
B	436	HIS	-	EXPRESSION TAG	UNP Q9H7B4

- Molecule 2 is SINEFUNGIN (three-letter code: SFG) (formula: C<sub>15</sub>H<sub>23</sub>N<sub>7</sub>O<sub>5</sub>).



Mol	Chain	Residues	Atoms				ZeroOcc	AltConf
2	A	1	Total	C	N	O	0	0
			27	15	7	5		
2	B	1	Total	C	N	O	0	0
			27	15	7	5		

- Molecule 3 is ZINC ION (three-letter code: ZN) (formula: Zn).

Mol	Chain	Residues	Atoms		ZeroOcc	AltConf
3	B	3	Total	Zn	0	0
			3	3		
3	A	3	Total	Zn	0	0
			3	3		

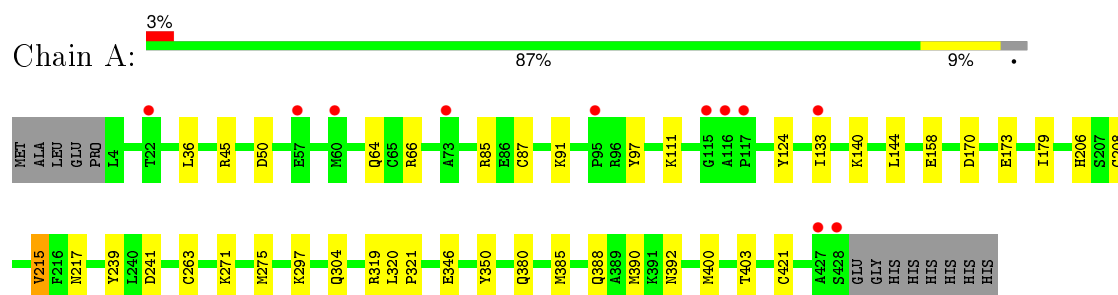
- Molecule 4 is water.

Mol	Chain	Residues	Atoms		ZeroOcc	AltConf
4	A	267	Total	O	0	0
			267	267		
4	B	215	Total	O	0	0
			215	215		

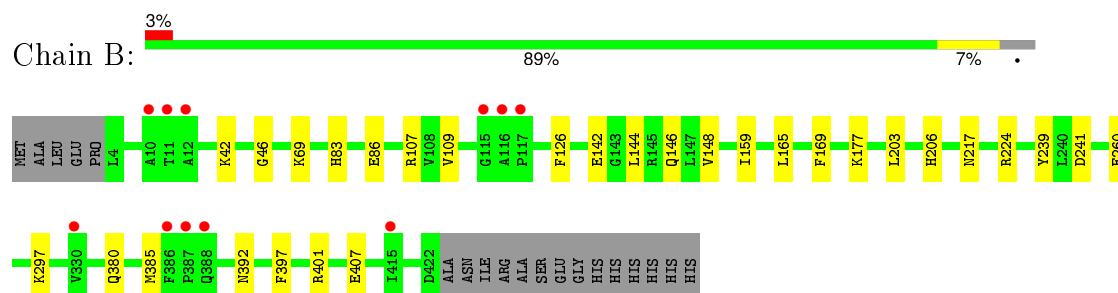
### 3 Residue-property plots [i](#)

These plots are drawn for all protein, RNA and DNA chains in the entry. The first graphic for a chain summarises the proportions of errors displayed in the second graphic. The second graphic shows the sequence view annotated by issues in geometry and electron density. Residues are color-coded according to the number of geometric quality criteria for which they contain at least one outlier: green = 0, yellow = 1, orange = 2 and red = 3 or more. A red dot above a residue indicates a poor fit to the electron density ( $\text{RSRZ} > 2$ ). Stretches of 2 or more consecutive residues without any outlier are shown as a green connector. Residues present in the sample, but not in the model, are shown in grey.

- Molecule 1: SET and MYND domain-containing protein 3



- Molecule 1: SET and MYND domain-containing protein 3



## 4 Data and refinement statistics

Property	Value	Source
Space group	P 1 21 1	Depositor
Cell constants a, b, c, $\alpha$ , $\beta$ , $\gamma$	58.17Å 118.07Å 82.90Å 90.00° 91.58° 90.00°	Depositor
Resolution (Å)	21.83 – 1.85 21.83 – 1.85	Depositor EDS
% Data completeness (in resolution range)	(Not available) (21.83-1.85) 99.7 (21.83-1.85)	Depositor EDS
$R_{merge}$	0.06	Depositor
$R_{sym}$	(Not available)	Depositor
$\langle I/\sigma(I) \rangle$ <sup>1</sup>	3.25 (at 1.85Å)	Xtriage
Refinement program	REFMAC	Depositor
R, $R_{free}$	0.200 , 0.216 0.198 , 0.214	Depositor DCC
$R_{free}$ test set	4758 reflections (5.28%)	DCC
Wilson B-factor (Å <sup>2</sup> )	24.6	Xtriage
Anisotropy	0.492	Xtriage
Bulk solvent $k_{sol}$ (e/Å <sup>3</sup> ), $B_{sol}$ (Å <sup>2</sup> )	0.39 , 56.2	EDS
Estimated twinning fraction	0.024 for h,-k,-l	Xtriage
L-test for twinning <sup>2</sup>	$\langle  L  \rangle = 0.50$ , $\langle L^2 \rangle = 0.33$	Xtriage
Outliers	0 of 94957 reflections	Xtriage
$F_o, F_c$ correlation	0.95	EDS
Total number of atoms	7079	wwPDB-VP
Average B, all atoms (Å <sup>2</sup> )	27.0	wwPDB-VP

Xtriage's analysis on translational NCS is as follows: *The largest off-origin peak in the Patterson function is 4.25% of the height of the origin peak. No significant pseudotranslation is detected.*

<sup>1</sup>Intensities estimated from amplitudes.

<sup>2</sup>Theoretical values of  $\langle |L| \rangle$ ,  $\langle L^2 \rangle$  for acentric reflections are 0.5, 0.375 respectively for untwinned datasets, and 0.333, 0.2 for perfectly twinned datasets.

## 5 Model quality [i](#)

### 5.1 Standard geometry [i](#)

Bond lengths and bond angles in the following residue types are not validated in this section: SFG, ZN

The Z score for a bond length (or angle) is the number of standard deviations the observed value is removed from the expected value. A bond length (or angle) with  $|Z| > 5$  is considered an outlier worth inspection. RMSZ is the root-mean-square of all Z scores of the bond lengths (or angles).

Mol	Chain	Bond lengths		Bond angles	
		RMSZ	$\# Z  > 5$	RMSZ	$\# Z  > 5$
1	A	0.67	0/3385	0.70	1/4574 (0.0%)
1	B	0.68	0/3298	0.68	2/4455 (0.0%)
All	All	0.68	0/6683	0.69	3/9029 (0.0%)

There are no bond length outliers.

All (3) bond angle outliers are listed below:

Mol	Chain	Res	Type	Atoms	Z	Observed(°)	Ideal(°)
1	B	241	ASP	CB-CG-OD1	6.83	124.44	118.30
1	B	107	ARG	NE-CZ-NH2	-6.08	117.26	120.30
1	A	241	ASP	CB-CG-OD1	5.73	123.45	118.30

There are no chirality outliers.

There are no planarity outliers.

### 5.2 Too-close contacts [i](#)

In the following table, the Non-H and H(model) columns list the number of non-hydrogen atoms and hydrogen atoms in the chain respectively. The H(added) column lists the number of hydrogen atoms added and optimized by MolProbity. The Clashes column lists the number of clashes within the asymmetric unit, whereas Symm-Clashes lists symmetry related clashes.

Mol	Chain	Non-H	H(model)	H(added)	Clashes	Symm-Clashes
1	A	3310	0	3236	23	0
1	B	3227	0	3154	17	0
2	A	27	0	22	0	0
2	B	27	0	22	1	0
3	A	3	0	0	0	0
3	B	3	0	0	0	0

*Continued on next page...*

*Continued from previous page...*

Mol	Chain	Non-H	H(model)	H(added)	Clashes	Symm-Clashes
4	A	267	0	0	4	0
4	B	215	0	0	2	0
All	All	7079	0	6434	41	0

The all-atom clashscore is defined as the number of clashes found per 1000 atoms (including hydrogen atoms). The all-atom clashscore for this structure is 3.

All (41) close contacts within the same asymmetric unit are listed below, sorted by their clash magnitude.

Atom-1	Atom-2	Interatomic distance (Å)	Clash overlap (Å)
1:A:206:HIS:HD2	1:A:239:TYR:H	1.07	0.91
1:B:297:LYS:HE3	4:B:538:HOH:O	1.70	0.91
1:A:170:ASP:HB3	1:A:173:GLU:HG2	1.53	0.90
1:A:206:HIS:CD2	1:A:239:TYR:H	1.92	0.87
1:B:206:HIS:HD2	1:B:239:TYR:H	1.23	0.86
1:A:380:GLN:HE22	1:A:392:ASN:HD22	1.27	0.83
1:B:380:GLN:HE22	1:B:392:ASN:HD22	1.30	0.79
1:B:206:HIS:CD2	1:B:239:TYR:H	2.10	0.67
1:B:126:PHE:O	1:B:177:LYS:HE3	1.98	0.64
1:B:224:ARG:NH2	1:B:407:GLU:OE1	2.21	0.60
1:B:380:GLN:NE2	1:B:392:ASN:HD22	2.01	0.54
1:B:380:GLN:HA	1:B:385:MET:HE3	1.90	0.54
1:A:215[B]:VAL:HG23	4:A:506:HOH:O	2.07	0.53
1:B:142:GLU:O	1:B:146:GLN:HG2	2.09	0.52
1:A:144:LEU:HD21	1:A:179:ILE:HD11	1.92	0.51
1:A:380:GLN:NE2	1:A:392:ASN:HD22	2.02	0.50
1:A:346:GLU:HG2	1:A:350:TYR:CE2	2.47	0.49
1:B:42:LYS:CB	4:B:623:HOH:O	2.59	0.49
1:B:46:GLY:HA2	1:B:69:LYS:HD2	1.94	0.48
1:B:144:LEU:O	1:B:148:VAL:HG23	2.14	0.48
1:A:208:CYS:HB2	1:A:263:CYS:SG	2.54	0.47
1:A:85:ARG:O	1:A:158:GLU:HG3	2.15	0.47
1:B:159:ILE:HD13	1:B:165:LEU:HD21	1.96	0.47
1:A:304:GLN:HG3	4:A:520:HOH:O	2.13	0.47
1:A:64:GLN:HB2	1:A:87:CYS:SG	2.55	0.46
1:B:159:ILE:CD1	1:B:165:LEU:HD21	2.45	0.46
1:A:319:ARG:NH1	1:A:319:ARG:HB2	2.29	0.46
1:A:45:ARG:HD3	1:A:97:TYR:CZ	2.51	0.45
1:A:271:LYS:O	1:A:275:MET:HG3	2.15	0.45
1:A:390:MET:HE2	1:A:421:CYS:HB3	1.99	0.45
1:A:297:LYS:HE3	4:A:665:HOH:O	2.15	0.45

*Continued on next page...*

*Continued from previous page...*

Atom-1	Atom-2	Interatomic distance (Å)	Clash overlap (Å)
1:A:320:LEU:HA	1:A:321:PRO:HD3	1.90	0.42
1:B:83:HIS:HA	1:B:86:GLU:HG2	2.01	0.42
1:B:109:VAL:HG12	1:B:169:PHE:CZ	2.55	0.42
1:A:400:MET:HA	1:A:403:THR:OG1	2.20	0.41
2:B:437:SFG:HG2	2:B:437:SFG:O4'	2.19	0.41
1:B:397:PHE:O	1:B:401:ARG:HG2	2.21	0.41
1:A:36:LEU:HD12	1:A:111:LYS:HE2	2.02	0.41
1:A:388:GLN:H	1:A:388:GLN:NE2	2.19	0.41
1:A:91:LYS:HE3	4:A:634:HOH:O	2.19	0.40
1:A:385:MET:HB3	1:A:388:GLN:HE21	1.86	0.40

There are no symmetry-related clashes.

## 5.3 Torsion angles [i](#)

### 5.3.1 Protein backbone [i](#)

In the following table, the Percentiles column shows the percent Ramachandran outliers of the chain as a percentile score with respect to all X-ray entries followed by that with respect to entries of similar resolution.

The Analysed column shows the number of residues for which the backbone conformation was analysed, and the total number of residues.

Mol	Chain	Analysed	Favoured	Allowed	Outliers	Percentiles	
1	A	426/438 (97%)	425 (100%)	1 (0%)	0	100	100
1	B	419/438 (96%)	415 (99%)	4 (1%)	0	100	100
All	All	845/876 (96%)	840 (99%)	5 (1%)	0	100	100

There are no Ramachandran outliers to report.

### 5.3.2 Protein sidechains [i](#)

In the following table, the Percentiles column shows the percent sidechain outliers of the chain as a percentile score with respect to all X-ray entries followed by that with respect to entries of similar resolution.

The Analysed column shows the number of residues for which the sidechain conformation was analysed, and the total number of residues.

Mol	Chain	Analysed	Rotameric	Outliers	Percentiles	
1	A	356/390 (91%)	348 (98%)	8 (2%)	60	43
1	B	344/390 (88%)	341 (99%)	3 (1%)	84	78
All	All	700/780 (90%)	689 (98%)	11 (2%)	74	57

All (11) residues with a non-rotameric sidechain are listed below:

Mol	Chain	Res	Type
1	A	50	ASP
1	A	66	ARG
1	A	124	TYR
1	A	133	ILE
1	A	140	LYS
1	A	215[A]	VAL
1	A	215[B]	VAL
1	A	217	ASN
1	B	203	LEU
1	B	217	ASN
1	B	260	GLU

Some sidechains can be flipped to improve hydrogen bonding and reduce clashes. All (6) such sidechains are listed below:

Mol	Chain	Res	Type
1	A	206	HIS
1	A	380	GLN
1	A	388	GLN
1	B	206	HIS
1	B	217	ASN
1	B	380	GLN

### 5.3.3 RNA ⓘ

There are no RNA molecules in this entry.

## 5.4 Non-standard residues in protein, DNA, RNA chains ⓘ

There are no non-standard protein/DNA/RNA residues in this entry.

## 5.5 Carbohydrates

There are no carbohydrates in this entry.

## 5.6 Ligand geometry

Of 8 ligands modelled in this entry, 6 are monoatomic - leaving 2 for Mogul analysis.

In the following table, the Counts columns list the number of bonds (or angles) for which Mogul statistics could be retrieved, the number of bonds (or angles) that are observed in the model and the number of bonds (or angles) that are defined in the chemical component dictionary. The Link column lists molecule types, if any, to which the group is linked. The Z score for a bond length (or angle) is the number of standard deviations the observed value is removed from the expected value. A bond length (or angle) with  $|Z| > 2$  is considered an outlier worth inspection. RMSZ is the root-mean-square of all Z scores of the bond lengths (or angles).

Mol	Type	Chain	Res	Link	Bond lengths			Bond angles		
					Counts	RMSZ	$\# Z  > 2$	Counts	RMSZ	$\# Z  > 2$
2	SFG	A	437	-	21,29,29	1.34	3 (14%)	19,42,42	1.19	1 (5%)
2	SFG	B	437	-	21,29,29	1.39	2 (9%)	19,42,42	1.05	1 (5%)

In the following table, the Chirals column lists the number of chiral outliers, the number of chiral centers analysed, the number of these observed in the model and the number defined in the chemical component dictionary. Similar counts are reported in the Torsion and Rings columns. '-' means no outliers of that kind were identified.

Mol	Type	Chain	Res	Link	Chirals	Torsions	Rings
2	SFG	A	437	-	-	0/9/33/33	0/3/3/3
2	SFG	B	437	-	-	0/9/33/33	0/3/3/3

All (5) bond length outliers are listed below:

Mol	Chain	Res	Type	Atoms	Z	Observed(Å)	Ideal(Å)
2	A	437	SFG	C8-N7	-2.36	1.30	1.34
2	A	437	SFG	O4'-C1'	2.32	1.44	1.41
2	B	437	SFG	O4'-C1'	3.13	1.45	1.41
2	A	437	SFG	CG-CD	3.75	1.58	1.53
2	B	437	SFG	CG-CD	4.09	1.58	1.53

All (2) bond angle outliers are listed below:

Mol	Chain	Res	Type	Atoms	Z	Observed(°)	Ideal(°)
2	B	437	SFG	N3-C2-N1	-2.57	126.93	128.89
2	A	437	SFG	O4'-C4'-C5'	3.62	114.67	109.36

There are no chirality outliers.

There are no torsion outliers.

There are no ring outliers.

1 monomer is involved in 1 short contact:

Mol	Chain	Res	Type	Clashes	Symm-Clashes
2	B	437	SFG	1	0

## 5.7 Other polymers [i](#)

There are no such residues in this entry.

## 5.8 Polymer linkage issues [i](#)

There are no chain breaks in this entry.

## 6 Fit of model and data

### 6.1 Protein, DNA and RNA chains

In the following table, the column labelled ‘#RSRZ> 2’ contains the number (and percentage) of RSRZ outliers, followed by percent RSRZ outliers for the chain as percentile scores relative to all X-ray entries and entries of similar resolution. The OWAB column contains the minimum, median, 95<sup>th</sup> percentile and maximum values of the occupancy-weighted average B-factor per residue. The column labelled ‘Q< 0.9’ lists the number of (and percentage) of residues with an average occupancy less than 0.9.

Mol	Chain	Analysed	<RSRZ>	#RSRZ>2	OWAB(Å <sup>2</sup> )	Q<0.9
1	A	425/438 (97%)	0.02	11 (2%) 59 56	13, 23, 43, 66	0
1	B	419/438 (95%)	0.12	11 (2%) 59 56	16, 25, 53, 78	0
All	All	844/876 (96%)	0.07	22 (2%) 59 56	13, 24, 46, 78	0

All (22) RSRZ outliers are listed below:

Mol	Chain	Res	Type	RSRZ
1	B	117	PRO	5.2
1	A	117	PRO	5.0
1	B	12	ALA	4.8
1	A	427	ALA	4.8
1	A	57	GLU	4.7
1	A	95	PRO	4.1
1	A	116	ALA	4.0
1	A	428	SER	4.0
1	B	116	ALA	3.9
1	A	115	GLY	3.0
1	B	10	ALA	2.7
1	B	386	PHE	2.7
1	A	73	ALA	2.4
1	B	330	VAL	2.4
1	B	388	GLN	2.3
1	B	115	GLY	2.3
1	B	415	ILE	2.2
1	B	387	PRO	2.1
1	A	133	ILE	2.1
1	B	11	THR	2.1
1	A	60	MET	2.1
1	A	22	THR	2.0

## 6.2 Non-standard residues in protein, DNA, RNA chains [i](#)

There are no non-standard protein/DNA/RNA residues in this entry.

## 6.3 Carbohydrates [i](#)

There are no carbohydrates in this entry.

## 6.4 Ligands [i](#)

In the following table, the Atoms column lists the number of modelled atoms in the group and the number defined in the chemical component dictionary. LLDF column lists the quality of electron density of the group with respect to its neighbouring residues in protein, DNA or RNA chains. The B-factors column lists the minimum, median, 95<sup>th</sup> percentile and maximum values of B factors of atoms in the group. The column labelled 'Q< 0.9' lists the number of atoms with occupancy less than 0.9.

Mol	Type	Chain	Res	Atoms	RSCC	RSR	LLDF	B-factors(Å <sup>2</sup> )	Q<0.9
3	ZN	A	438	1/1	1.00	0.11	0.41	24,24,24,24	1
2	SFG	A	437	27/27	0.96	0.10	-0.11	6,19,22,28	0
2	SFG	B	437	27/27	0.90	0.12	-0.14	17,26,30,32	0
3	ZN	A	439	1/1	0.99	0.09	-0.65	31,31,31,31	1
3	ZN	B	439	1/1	0.99	0.08	-0.79	23,23,23,23	1
3	ZN	B	440	1/1	0.98	0.08	-0.85	35,35,35,35	1
3	ZN	B	438	1/1	0.99	0.07	-1.03	26,26,26,26	1
3	ZN	A	440	1/1	0.97	0.05	-2.51	31,31,31,31	1

## 6.5 Other polymers [i](#)

There are no such residues in this entry.