



Full wwPDB X-ray Structure Validation Report ⓘ

Feb 1, 2016 – 01:00 PM GMT

PDB ID : 3SBF
Title : Crystal structure of the mutant P311A of enolase superfamily member from VIBRIONALES BACTERIUM complexed with Mg and D-Arabinonate
Authors : Fedorov, A.A.; Fedorov, E.V.; Wichelecki, D.; Gerlt, J.A.; Almo, S.C.
Deposited on : 2011-06-04
Resolution : 1.50 Å(reported)

This is a Full wwPDB X-ray Structure Validation Report for a publicly released PDB entry.
We welcome your comments at validation@mail.wwpdb.org
A user guide is available at
<http://wwpdb.org/validation/2016/XrayValidationReportHelp>
with specific help available everywhere you see the ⓘ symbol.

The following versions of software and data (see [references ⓘ](#)) were used in the production of this report:

MolProbity : 4.02b-467
Mogul : 1.7 (RC4), CSD as536be (2015)
Xtriage (Phenix) : 1.9-1692
EDS : rb-20026688
Percentile statistics : 20151230.v01 (using entries in the PDB archive December 30th 2015)
Refmac : 5.8.0135
CCP4 : 6.5.0
Ideal geometry (proteins) : Engh & Huber (2001)
Ideal geometry (DNA, RNA) : Parkinson et al. (1996)
Validation Pipeline (wwPDB-VP) : trunk26865

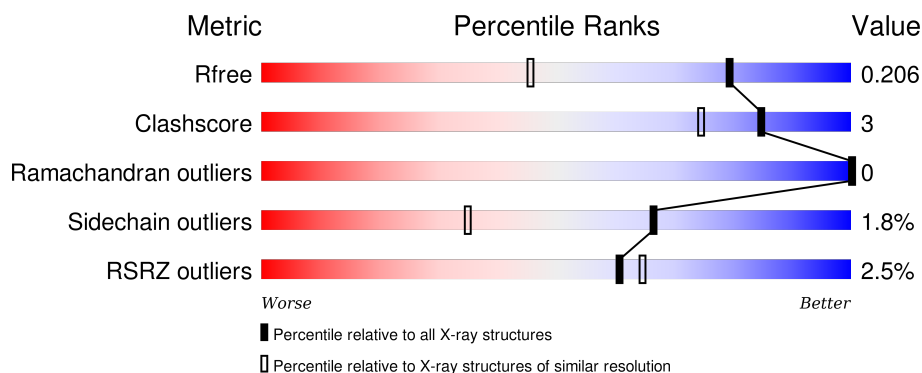
1 Overall quality at a glance

The following experimental techniques were used to determine the structure:

X-RAY DIFFRACTION

The reported resolution of this entry is 1.50 Å.

Percentile scores (ranging between 0-100) for global validation metrics of the entry are shown in the following graphic. The table shows the number of entries on which the scores are based.



Metric	Whole archive (#Entries)	Similar resolution (#Entries, resolution range(Å))
R_{free}	91344	2072 (1.50-1.50)
Clashscore	102246	2274 (1.50-1.50)
Ramachandran outliers	100387	2218 (1.50-1.50)
Sidechain outliers	100360	2216 (1.50-1.50)
RSRZ outliers	91569	2075 (1.50-1.50)

The table below summarises the geometric issues observed across the polymeric chains and their fit to the electron density. The red, orange, yellow and green segments on the lower bar indicate the fraction of residues that contain outliers for ≥ 3 , 2, 1 and 0 types of geometric quality criteria. A grey segment represents the fraction of residues that are not modelled. The numeric value for each fraction is indicated below the corresponding segment, with a dot representing fractions $\leq 5\%$. The upper red bar (where present) indicates the fraction of residues that have poor fit to the electron density. The numeric value is given above the bar.

Mol	Chain	Length	Quality of chain
1	A	401	<div> <div>3%</div> <div>90%</div> <div>8% ..</div> </div>
1	B	401	<div> <div>%</div> <div>91%</div> <div>6% .</div> </div>
1	C	401	<div> <div>2%</div> <div>90%</div> <div>8% .</div> </div>
1	D	401	<div> <div>4%</div> <div>92%</div> <div>7%</div> </div>

The following table lists non-polymeric compounds, carbohydrate monomers and non-standard

residues in protein, DNA, RNA chains that are outliers for geometric or electron-density-fit criteria:

Mol	Type	Chain	Res	Chirality	Geometry	Clashes	Electron density
4	D8T	B	404	-	-	-	X
4	D8T	D	403	-	-	-	X

2 Entry composition

There are 5 unique types of molecules in this entry. The entry contains 14132 atoms, of which 0 are hydrogens and 0 are deuteriums.

In the tables below, the ZeroOcc column contains the number of atoms modelled with zero occupancy, the AltConf column contains the number of residues with at least one atom in alternate conformation and the Trace column contains the number of residues modelled with at most 2 atoms.

- Molecule 1 is a protein called mandelate racemase / muconate lactonizing enzyme.

Mol	Chain	Residues	Atoms					ZeroOcc	AltConf	Trace
1	A	397	Total	C	N	O	S	0	1	0
			3172	2017	549	589	17			
1	B	390	Total	C	N	O	S	0	0	0
			3112	1978	541	576	17			
1	C	397	Total	C	N	O	S	0	1	0
			3174	2018	551	588	17			
1	D	399	Total	C	N	O	S	0	2	0
			3198	2034	554	593	17			

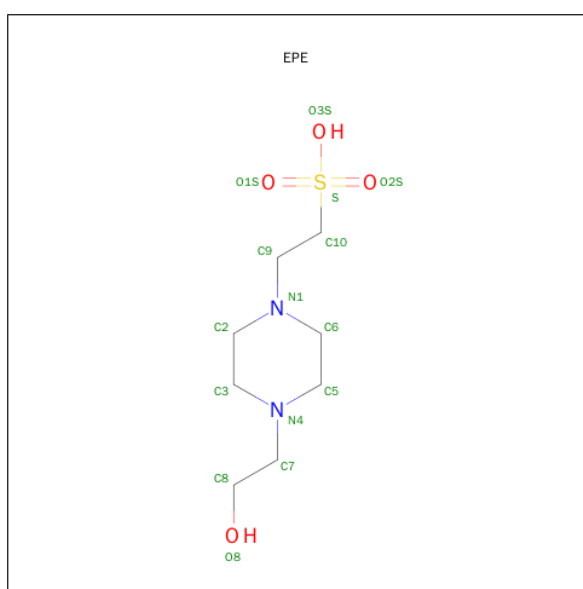
There are 16 discrepancies between the modelled and reference sequences:

Chain	Residue	Modelled	Actual	Comment	Reference
A	1	MET	-	EXPRESSION TAG	UNP A5KUH4
A	2	SER	-	EXPRESSION TAG	UNP A5KUH4
A	3	LEU	-	EXPRESSION TAG	UNP A5KUH4
A	311	ALA	PRO	ENGINEERED MUTATION	UNP A5KUH4
B	1	MET	-	EXPRESSION TAG	UNP A5KUH4
B	2	SER	-	EXPRESSION TAG	UNP A5KUH4
B	3	LEU	-	EXPRESSION TAG	UNP A5KUH4
B	311	ALA	PRO	ENGINEERED MUTATION	UNP A5KUH4
C	1	MET	-	EXPRESSION TAG	UNP A5KUH4
C	2	SER	-	EXPRESSION TAG	UNP A5KUH4
C	3	LEU	-	EXPRESSION TAG	UNP A5KUH4
C	311	ALA	PRO	ENGINEERED MUTATION	UNP A5KUH4
D	1	MET	-	EXPRESSION TAG	UNP A5KUH4
D	2	SER	-	EXPRESSION TAG	UNP A5KUH4
D	3	LEU	-	EXPRESSION TAG	UNP A5KUH4
D	311	ALA	PRO	ENGINEERED MUTATION	UNP A5KUH4

- Molecule 2 is MAGNESIUM ION (three-letter code: MG) (formula: Mg).

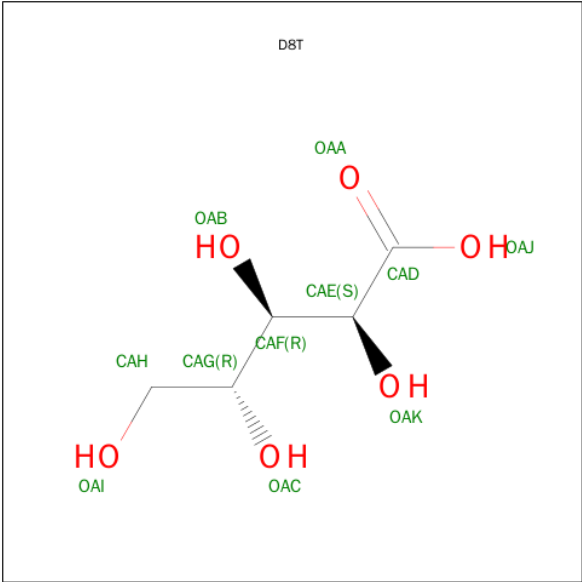
Mol	Chain	Residues	Atoms	ZeroOcc	AltConf
2	B	2	Total Mg 2 2	0	0
2	A	1	Total Mg 1 1	0	0
2	D	1	Total Mg 1 1	0	0
2	C	1	Total Mg 1 1	0	0

- Molecule 3 is 4-(2-HYDROXYETHYL)-1-PIPERAZINE ETHANESULFONIC ACID (three-letter code: EPE) (formula: C₈H₁₈N₂O₄S).



Mol	Chain	Residues	Atoms	ZeroOcc	AltConf
3	A	1	Total C N O S 15 8 2 4 1	0	0
3	C	1	Total C N O S 15 8 2 4 1	0	0

- Molecule 4 is D-ARABINONIC ACID (three-letter code: D8T) (formula: C₅H₁₀O₆).



Mol	Chain	Residues	Atoms			ZeroOcc	AltConf
4	A	1	Total	C	O	0	0
			11	5	6		
4	B	1	Total	C	O	0	0
			11	5	6		
4	C	1	Total	C	O	0	0
			11	5	6		
4	D	1	Total	C	O	0	0
			11	5	6		

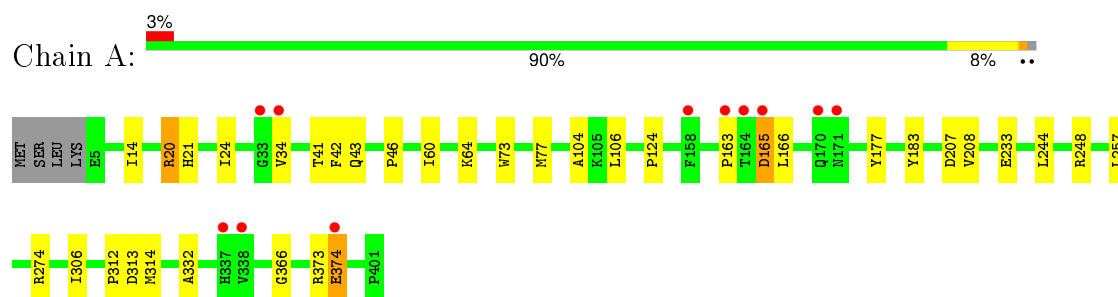
- Molecule 5 is water.

Mol	Chain	Residues	Atoms		ZeroOcc	AltConf
5	A	359	Total	O	0	0
			359	359		
5	B	347	Total	O	0	0
			347	347		
5	C	361	Total	O	0	0
			361	361		
5	D	330	Total	O	0	0
			330	330		

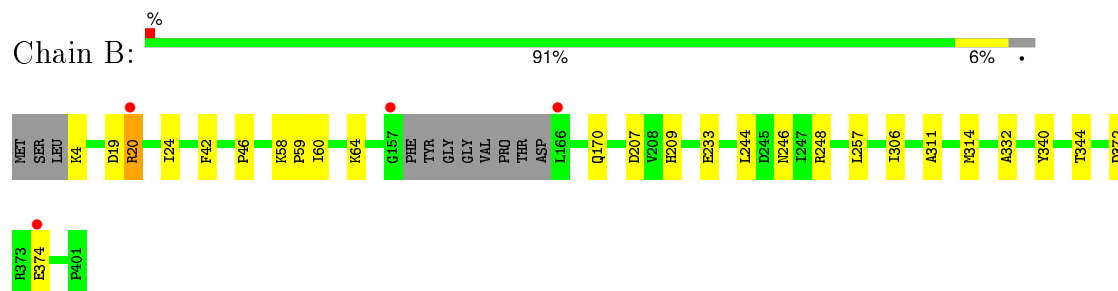
3 Residue-property plots [i](#)

These plots are drawn for all protein, RNA and DNA chains in the entry. The first graphic for a chain summarises the proportions of errors displayed in the second graphic. The second graphic shows the sequence view annotated by issues in geometry and electron density. Residues are color-coded according to the number of geometric quality criteria for which they contain at least one outlier: green = 0, yellow = 1, orange = 2 and red = 3 or more. A red dot above a residue indicates a poor fit to the electron density ($RSRZ > 2$). Stretches of 2 or more consecutive residues without any outlier are shown as a green connector. Residues present in the sample, but not in the model, are shown in grey.

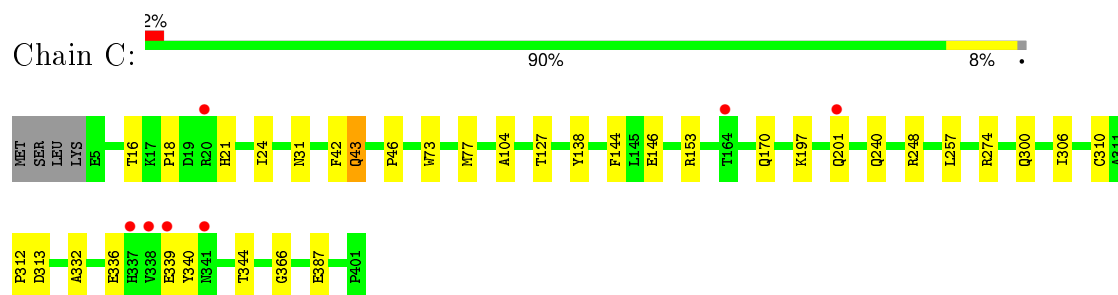
- Molecule 1: mandelate racemase / muconate lactonizing enzyme



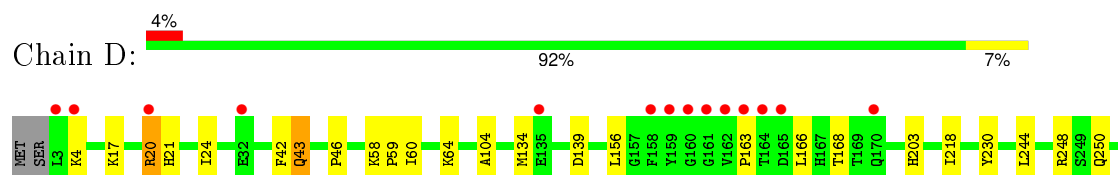
- Molecule 1: mandelate racemase / muconate lactonizing enzyme

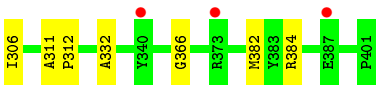


- Molecule 1: mandelate racemase / muconate lactonizing enzyme



- Molecule 1: mandelate racemase / muconate lactonizing enzyme





4 Data and refinement statistics

Property	Value	Source
Space group	P 42 21 2	Depositor
Cell constants a, b, c, α , β , γ	163.37Å 163.37Å 110.41Å 90.00° 90.00° 90.00°	Depositor
Resolution (Å)	46.79 – 1.50 49.81 – 1.50	Depositor EDS
% Data completeness (in resolution range)	98.3 (46.79-1.50) 98.3 (49.81-1.50)	Depositor EDS
R_{merge}	(Not available)	Depositor
R_{sym}	(Not available)	Depositor
$\langle I/\sigma(I) \rangle$ ¹	1.01 (at 1.50Å)	Xtriage
Refinement program	PHENIX (phenix.refine: 1.6.4_486)	Depositor
R, R_{free}	0.180 , 0.206 0.180 , 0.206	Depositor DCC
R_{free} test set	11637 reflections (5.28%)	DCC
Wilson B-factor (Å ²)	19.7	Xtriage
Anisotropy	0.073	Xtriage
Bulk solvent k_{sol} (e/Å ³), B_{sol} (Å ²)	0.33 , 36.1	EDS
Estimated twinning fraction	No twinning to report.	Xtriage
L-test for twinning ²	$\langle L \rangle = 0.52$, $\langle L^2 \rangle = 0.36$	Xtriage
Outliers	0 of 232185 reflections	Xtriage
F_o, F_c correlation	0.97	EDS
Total number of atoms	14132	wwPDB-VP
Average B, all atoms (Å ²)	22.0	wwPDB-VP

Xtriage's analysis on translational NCS is as follows: *The largest off-origin peak in the Patterson function is 3.04% of the height of the origin peak. No significant pseudotranslation is detected.*

¹Intensities estimated from amplitudes.

²Theoretical values of $\langle |L| \rangle$, $\langle L^2 \rangle$ for acentric reflections are 0.5, 0.375 respectively for untwinned datasets, and 0.333, 0.2 for perfectly twinned datasets.

5 Model quality [i](#)

5.1 Standard geometry [i](#)

Bond lengths and bond angles in the following residue types are not validated in this section: MG, EPE, D8T

The Z score for a bond length (or angle) is the number of standard deviations the observed value is removed from the expected value. A bond length (or angle) with $|Z| > 5$ is considered an outlier worth inspection. RMSZ is the root-mean-square of all Z scores of the bond lengths (or angles).

Mol	Chain	Bond lengths		Bond angles	
		RMSZ	$\# Z > 5$	RMSZ	$\# Z > 5$
1	A	0.34	0/3257	0.54	0/4431
1	B	0.34	0/3193	0.53	0/4340
1	C	0.34	0/3259	0.54	0/4433
1	D	0.33	0/3283	0.53	0/4465
All	All	0.34	0/12992	0.54	0/17669

There are no bond length outliers.

There are no bond angle outliers.

There are no chirality outliers.

There are no planarity outliers.

5.2 Too-close contacts [i](#)

In the following table, the Non-H and H(model) columns list the number of non-hydrogen atoms and hydrogen atoms in the chain respectively. The H(added) column lists the number of hydrogen atoms added and optimized by MolProbity. The Clashes column lists the number of clashes within the asymmetric unit, whereas Symm-Clashes lists symmetry related clashes.

Mol	Chain	Non-H	H(model)	H(added)	Clashes	Symm-Clashes
1	A	3172	0	3068	21	0
1	B	3112	0	3022	14	0
1	C	3174	0	3073	19	0
1	D	3198	0	3099	17	0
2	A	1	0	0	0	0
2	B	2	0	0	0	0
2	C	1	0	0	0	0
2	D	1	0	0	0	0
3	A	15	0	17	1	0

Continued on next page...

Continued from previous page...

Mol	Chain	Non-H	H(model)	H(added)	Clashes	Symm-Clashes
3	C	15	0	17	1	0
4	A	11	0	8	0	0
4	B	11	0	8	1	0
4	C	11	0	8	0	0
4	D	11	0	8	0	0
5	A	359	0	0	4	0
5	B	347	0	0	2	0
5	C	361	0	0	7	0
5	D	330	0	0	1	0
All	All	14132	0	12328	72	0

The all-atom clashscore is defined as the number of clashes found per 1000 atoms (including hydrogen atoms). The all-atom clashscore for this structure is 3.

All (72) close contacts within the same asymmetric unit are listed below, sorted by their clash magnitude.

Atom-1	Atom-2	Interatomic distance (Å)	Clash overlap (Å)
1:D:21:HIS:HB3	1:D:43:GLN:HG3	1.69	0.73
1:B:60:ILE:O	1:B:64:LYS:HE2	1.92	0.69
3:C:403:EPE:H22	5:C:1335:HOH:O	1.96	0.66
1:C:240:GLN:HG3	5:C:510:HOH:O	1.98	0.63
1:A:34:VAL:HG21	1:A:106:LEU:HD21	1.84	0.59
1:B:19:ASP:OD2	1:B:20:ARG:HG2	2.04	0.58
1:A:163:PRO:HB3	1:A:177:TYR:CG	2.40	0.57
1:D:163:PRO:HB2	1:D:168:THR:HG21	1.87	0.57
1:B:64:LYS:HD3	5:B:759:HOH:O	2.05	0.56
1:B:246:ASN:CG	5:B:1365:HOH:O	2.44	0.55
1:B:372:ASP:OD2	1:B:374:GLU:HG2	2.08	0.54
1:C:240:GLN:HG3	5:C:458:HOH:O	2.07	0.54
1:D:311:ALA:HB1	1:D:312:PRO:CD	2.38	0.53
1:D:218:ILE:HD11	1:D:250:GLN:NE2	2.24	0.52
1:A:244:LEU:O	1:A:248:ARG:HG2	2.09	0.52
1:C:127:THR:HG21	1:C:144:PHE:CG	2.44	0.52
1:D:20:ARG:HD2	1:D:384:ARG:NH1	2.24	0.52
1:C:300:GLN:NE2	5:C:1414:HOH:O	2.40	0.52
1:A:60:ILE:O	1:A:64:LYS:HE2	2.09	0.51
1:A:124:PRO:HG3	5:A:696:HOH:O	2.11	0.50
1:A:20:ARG:NH1	3:A:403:EPE:O2S	2.44	0.50
1:B:340:TYR:CD1	1:B:344:THR:HG21	2.47	0.50
1:A:73:TRP:CH2	1:A:77:MET:HG3	2.48	0.49
1:B:20:ARG:HH11	1:B:20:ARG:HA	1.78	0.49

Continued on next page...

Continued from previous page...

Atom-1	Atom-2	Interatomic distance (Å)	Clash overlap (Å)
1:A:24:ILE:HD11	1:A:46:PRO:HA	1.95	0.48
1:C:138:TYR:CE1	1:C:197:LYS:HD3	2.48	0.48
1:C:340:TYR:CD1	1:C:344:THR:HG21	2.47	0.48
1:D:311:ALA:HB1	1:D:312:PRO:HD2	1.96	0.48
1:B:24:ILE:HD11	1:B:46:PRO:HA	1.96	0.48
1:C:339:GLU:OE2	1:C:339:GLU:HA	2.13	0.48
1:A:274:ARG:HD3	5:A:536:HOH:O	2.15	0.47
1:B:58:LYS:HB3	1:B:59:PRO:HD3	1.96	0.46
1:A:314:MET:HG3	5:A:428:HOH:O	2.15	0.46
1:B:209:HIS:NE2	4:B:404:D8T:HAG	2.31	0.46
1:D:134:MET:SD	1:D:156:LEU:HD22	2.56	0.46
1:B:306:ILE:HB	1:B:332:ALA:HA	1.97	0.45
1:A:43:GLN:O	1:A:46:PRO:HD3	2.16	0.45
1:A:41:THR:HG21	1:A:313:ASP:O	2.17	0.45
1:B:311:ALA:H	1:B:314:MET:HE2	1.81	0.44
1:D:58:LYS:HB3	1:D:59:PRO:HD3	1.98	0.44
1:C:146:GLU:HG3	5:C:1184:HOH:O	2.17	0.43
1:D:306:ILE:HB	1:D:332:ALA:HA	2.00	0.43
1:D:163:PRO:CB	1:D:168:THR:HG21	2.47	0.43
1:D:24:ILE:HD11	1:D:46:PRO:HA	2.00	0.43
1:A:21:HIS:CE1	1:A:312:PRO:HB2	2.53	0.43
1:A:374:GLU:HG2	5:A:1393:HOH:O	2.17	0.43
1:C:16:THR:C	1:C:18:PRO:HD3	2.39	0.43
1:A:73:TRP:CZ2	1:A:77:MET:HG3	2.54	0.43
1:C:21:HIS:CE1	1:C:312:PRO:HB2	2.54	0.42
1:A:207:ASP:HA	1:A:233:GLU:HB3	2.01	0.42
1:A:306:ILE:HB	1:A:332:ALA:HA	2.01	0.42
1:C:24:ILE:HD11	1:C:46:PRO:HA	2.01	0.42
1:C:138:TYR:CZ	1:C:197:LYS:HD3	2.54	0.42
1:D:60:ILE:O	1:D:64:LYS:HE2	2.19	0.42
1:D:244:LEU:O	1:D:248:ARG:HG2	2.19	0.42
1:D:4:LYS:HD2	5:D:903:HOH:O	2.19	0.42
1:A:14:ILE:HD11	1:A:373:ARG:HD3	2.01	0.42
1:D:17:LYS:HD3	1:D:382:MET:HB3	2.01	0.42
1:C:153:ARG:CZ	5:C:1201:HOH:O	2.68	0.42
1:C:306:ILE:HB	1:C:332:ALA:HA	2.01	0.42
1:B:207:ASP:HA	1:B:233:GLU:HB3	2.00	0.41
1:A:165:ASP:OD1	1:A:165:ASP:N	2.54	0.41
1:C:274:ARG:HD3	5:C:522:HOH:O	2.19	0.41
1:C:310:CYS:HB2	1:C:336:GLU:HB3	2.03	0.41
1:D:104:ALA:HB3	1:D:366:GLY:HA2	2.02	0.41

Continued on next page...

Continued from previous page...

Atom-1	Atom-2	Interatomic distance (Å)	Clash overlap (Å)
1:C:104:ALA:HB3	1:C:366:GLY:HA2	2.03	0.41
1:C:73:TRP:CH2	1:C:77:MET:HG3	2.56	0.41
1:B:244:LEU:O	1:B:248:ARG:HG2	2.21	0.41
1:A:104:ALA:HB3	1:A:366:GLY:HA2	2.03	0.41
1:C:43:GLN:HG3	1:C:313:ASP:HB2	2.03	0.40
1:A:183:TYR:OH	1:A:208:VAL:HA	2.21	0.40
1:D:203:HIS:HB3	1:D:230:TYR:HB2	2.04	0.40

There are no symmetry-related clashes.

5.3 Torsion angles [i](#)

5.3.1 Protein backbone [i](#)

In the following table, the Percentiles column shows the percent Ramachandran outliers of the chain as a percentile score with respect to all X-ray entries followed by that with respect to entries of similar resolution.

The Analysed column shows the number of residues for which the backbone conformation was analysed, and the total number of residues.

Mol	Chain	Analysed	Favoured	Allowed	Outliers	Percentiles	
1	A	396/401 (99%)	389 (98%)	7 (2%)	0	100	100
1	B	386/401 (96%)	380 (98%)	6 (2%)	0	100	100
1	C	396/401 (99%)	389 (98%)	7 (2%)	0	100	100
1	D	399/401 (100%)	390 (98%)	9 (2%)	0	100	100
All	All	1577/1604 (98%)	1548 (98%)	29 (2%)	0	100	100

There are no Ramachandran outliers to report.

5.3.2 Protein sidechains [i](#)

In the following table, the Percentiles column shows the percent sidechain outliers of the chain as a percentile score with respect to all X-ray entries followed by that with respect to entries of similar resolution.

The Analysed column shows the number of residues for which the sidechain conformation was analysed, and the total number of residues.

Mol	Chain	Analysed	Rotameric	Outliers	Percentiles	
1	A	341/344 (99%)	335 (98%)	6 (2%)	66	35
1	B	335/344 (97%)	330 (98%)	5 (2%)	72	44
1	C	341/344 (99%)	333 (98%)	8 (2%)	58	24
1	D	344/344 (100%)	339 (98%)	5 (2%)	72	44
All	All	1361/1376 (99%)	1337 (98%)	24 (2%)	66	35

All (24) residues with a non-rotameric sidechain are listed below:

Mol	Chain	Res	Type
1	A	20	ARG
1	A	42	PHE
1	A	165	ASP
1	A	166	LEU
1	A	257	LEU
1	A	374	GLU
1	B	4	LYS
1	B	20	ARG
1	B	42	PHE
1	B	170	GLN
1	B	257	LEU
1	C	31	ASN
1	C	42	PHE
1	C	43	GLN
1	C	170	GLN
1	C	201	GLN
1	C	248	ARG
1	C	257	LEU
1	C	387	GLU
1	D	20	ARG
1	D	42	PHE
1	D	43	GLN
1	D	139	ASP
1	D	166	LEU

Some sidechains can be flipped to improve hydrogen bonding and reduce clashes. All (7) such sidechains are listed below:

Mol	Chain	Res	Type
1	A	201	GLN
1	B	90	ASN
1	B	219	GLN

Continued on next page...

Continued from previous page...

Mol	Chain	Res	Type
1	C	21	HIS
1	C	90	ASN
1	C	262	ASN
1	C	300	GLN

5.3.3 RNA [i](#)

There are no RNA molecules in this entry.

5.4 Non-standard residues in protein, DNA, RNA chains [i](#)

There are no non-standard protein/DNA/RNA residues in this entry.

5.5 Carbohydrates [i](#)

There are no carbohydrates in this entry.

5.6 Ligand geometry [i](#)

Of 11 ligands modelled in this entry, 5 are monoatomic - leaving 6 for Mogul analysis.

In the following table, the Counts columns list the number of bonds (or angles) for which Mogul statistics could be retrieved, the number of bonds (or angles) that are observed in the model and the number of bonds (or angles) that are defined in the chemical component dictionary. The Link column lists molecule types, if any, to which the group is linked. The Z score for a bond length (or angle) is the number of standard deviations the observed value is removed from the expected value. A bond length (or angle) with $|Z| > 2$ is considered an outlier worth inspection. RMSZ is the root-mean-square of all Z scores of the bond lengths (or angles).

Mol	Type	Chain	Res	Link	Bond lengths			Bond angles		
					Counts	RMSZ	$\# Z > 2$	Counts	RMSZ	$\# Z > 2$
3	EPE	A	403	-	14,15,15	0.32	0	18,20,20	1.90	5 (27%)
4	D8T	A	404	2	6,10,10	0.31	0	6,13,13	0.45	0
4	D8T	B	404	2	6,10,10	0.47	0	6,13,13	0.29	0
3	EPE	C	403	-	14,15,15	0.40	0	18,20,20	1.78	5 (27%)
4	D8T	C	404	2	6,10,10	0.39	0	6,13,13	0.44	0
4	D8T	D	403	2	6,10,10	0.36	0	6,13,13	0.55	0

In the following table, the Chirals column lists the number of chiral outliers, the number of chiral centers analysed, the number of these observed in the model and the number defined in the chemical

component dictionary. Similar counts are reported in the Torsion and Rings columns. '-' means no outliers of that kind were identified.

Mol	Type	Chain	Res	Link	Chirals	Torsions	Rings
3	EPE	A	403	-	-	0/9/19/19	0/1/1/1
4	D8T	A	404	2	-	0/10/14/14	0/0/0/0
4	D8T	B	404	2	-	0/10/14/14	0/0/0/0
3	EPE	C	403	-	-	0/9/19/19	0/1/1/1
4	D8T	C	404	2	-	0/10/14/14	0/0/0/0
4	D8T	D	403	2	-	0/10/14/14	0/0/0/0

There are no bond length outliers.

All (10) bond angle outliers are listed below:

Mol	Chain	Res	Type	Atoms	Z	Observed(°)	Ideal(°)
3	A	403	EPE	C3-C2-N1	-3.01	105.25	110.63
3	A	403	EPE	C5-C6-N1	-2.01	107.03	110.63
3	C	403	EPE	C6-N1-C2	2.05	113.34	108.90
3	A	403	EPE	C6-C5-N4	2.06	114.32	110.63
3	A	403	EPE	C7-N4-C5	2.25	117.05	111.27
3	C	403	EPE	C7-N4-C3	2.31	117.18	111.27
3	C	403	EPE	C7-N4-C5	2.67	118.12	111.27
3	C	403	EPE	O2S-S-C10	3.71	110.07	106.91
3	C	403	EPE	C5-N4-C3	3.76	117.05	108.90
3	A	403	EPE	C5-N4-C3	5.07	119.87	108.90

There are no chirality outliers.

There are no torsion outliers.

There are no ring outliers.

3 monomers are involved in 3 short contacts:

Mol	Chain	Res	Type	Clashes	Symm-Clashes
3	A	403	EPE	1	0
4	B	404	D8T	1	0
3	C	403	EPE	1	0

5.7 Other polymers ⓘ

There are no such residues in this entry.

5.8 Polymer linkage issues ⓘ

There are no chain breaks in this entry.

6 Fit of model and data ⓘ

6.1 Protein, DNA and RNA chains ⓘ

In the following table, the column labelled ‘#RSRZ> 2’ contains the number (and percentage) of RSRZ outliers, followed by percent RSRZ outliers for the chain as percentile scores relative to all X-ray entries and entries of similar resolution. The OWAB column contains the minimum, median, 95th percentile and maximum values of the occupancy-weighted average B-factor per residue. The column labelled ‘Q< 0.9’ lists the number of (and percentage) of residues with an average occupancy less than 0.9.

Mol	Chain	Analysed	<RSRZ>	#RSRZ>2	OWAB(Å ²)	Q<0.9
1	A	397/401 (99%)	-0.33	11 (2%) 56 59	14, 19, 32, 59	0
1	B	390/401 (97%)	-0.33	4 (1%) 84 86	15, 19, 31, 44	0
1	C	397/401 (99%)	-0.41	7 (1%) 71 75	14, 19, 32, 49	0
1	D	399/401 (99%)	-0.22	17 (4%) 39 41	15, 20, 36, 51	0
All	All	1583/1604 (98%)	-0.32	39 (2%) 61 64	14, 19, 34, 59	0

All (39) RSRZ outliers are listed below:

Mol	Chain	Res	Type	RSRZ
1	A	164	THR	8.4
1	D	3	LEU	6.5
1	D	158	PHE	6.2
1	D	164	THR	5.3
1	D	4	LYS	4.4
1	D	162	VAL	4.2
1	A	33	GLY	4.2
1	D	160	GLY	3.8
1	D	159	TYR	3.6
1	D	163	PRO	3.5
1	A	338	VAL	3.4
1	B	166	LEU	3.4
1	B	20	ARG	3.4
1	D	20	ARG	3.3
1	D	165	ASP	3.2
1	C	341	ASN	3.0
1	D	373	ARG	2.9
1	A	163	PRO	2.8
1	A	34	VAL	2.8
1	D	32	GLU	2.7
1	A	171	ASN	2.7

Continued on next page...

Continued from previous page...

Mol	Chain	Res	Type	RSRZ
1	C	339	GLU	2.6
1	C	20	ARG	2.6
1	D	340	TYR	2.5
1	C	338	VAL	2.4
1	A	165	ASP	2.3
1	D	161	GLY	2.3
1	D	387	GLU	2.3
1	C	337	HIS	2.2
1	C	164	THR	2.2
1	A	158	PHE	2.2
1	B	374	GLU	2.2
1	D	170	GLN	2.2
1	B	157	GLY	2.1
1	D	135	GLU	2.1
1	A	337	HIS	2.1
1	A	170	GLN	2.1
1	A	374	GLU	2.0
1	C	201	GLN	2.0

6.2 Non-standard residues in protein, DNA, RNA chains [i](#)

There are no non-standard protein/DNA/RNA residues in this entry.

6.3 Carbohydrates [i](#)

There are no carbohydrates in this entry.

6.4 Ligands [i](#)

In the following table, the Atoms column lists the number of modelled atoms in the group and the number defined in the chemical component dictionary. LLDF column lists the quality of electron density of the group with respect to its neighbouring residues in protein, DNA or RNA chains. The B-factors column lists the minimum, median, 95th percentile and maximum values of B factors of atoms in the group. The column labelled 'Q< 0.9' lists the number of atoms with occupancy less than 0.9.

Mol	Type	Chain	Res	Atoms	RSCC	RSR	LLDF	B-factors(Å ²)	Q<0.9
4	D8T	D	403	11/11	0.87	0.18	7.04	22,32,39,39	0
4	D8T	B	404	11/11	0.91	0.15	3.78	19,26,33,36	0
2	MG	B	403	1/1	0.99	0.12	1.82	24,24,24,24	0

Continued on next page...

Continued from previous page...

Mol	Type	Chain	Res	Atoms	RSCC	RSR	LLDF	B-factors(\AA^2)	Q<0.9
4	D8T	C	404	11/11	0.94	0.10	1.33	19,24,29,32	0
3	EPE	C	403	15/15	0.83	0.17	1.32	27,35,52,53	0
3	EPE	A	403	15/15	0.82	0.13	1.16	27,30,51,60	0
4	D8T	A	404	11/11	0.93	0.08	0.09	18,21,26,28	0
2	MG	A	402	1/1	0.99	0.06	-1.60	17,17,17,17	0
2	MG	D	402	1/1	0.99	0.03	-2.36	19,19,19,19	0
2	MG	B	402	1/1	0.99	0.02	-3.14	17,17,17,17	0
2	MG	C	402	1/1	0.99	0.02	-9.06	17,17,17,17	0

6.5 Other polymers [i](#)

There are no such residues in this entry.