



Full wwPDB X-ray Structure Validation Report ⓘ

Feb 1, 2016 – 01:06 PM GMT

PDB ID : 3SUA
Title : Crystal structure of the intracellular domain of Plexin-B1 in complex with Rac1
Authors : Bell, C.H.; Aricescu, A.R.; Jones, E.Y.; Siebold, C.
Deposited on : 2011-07-11
Resolution : 4.39 Å(reported)

This is a Full wwPDB X-ray Structure Validation Report for a publicly released PDB entry.
We welcome your comments at validation@mail.wwpdb.org
A user guide is available at
<http://wwpdb.org/validation/2016/XrayValidationReportHelp>
with specific help available everywhere you see the ⓘ symbol.

The following versions of software and data (see [references ⓘ](#)) were used in the production of this report:

MolProbity : 4.02b-467
Mogul : 1.7 (RC4), CSD as536be (2015)
Xtriage (Phenix) : 1.9-1692
EDS : rb-20026688
Percentile statistics : 20151230.v01 (using entries in the PDB archive December 30th 2015)
Refmac : 5.8.0135
CCP4 : 6.5.0
Ideal geometry (proteins) : Engh & Huber (2001)
Ideal geometry (DNA, RNA) : Parkinson et al. (1996)
Validation Pipeline (wwPDB-VP) : trunk26865

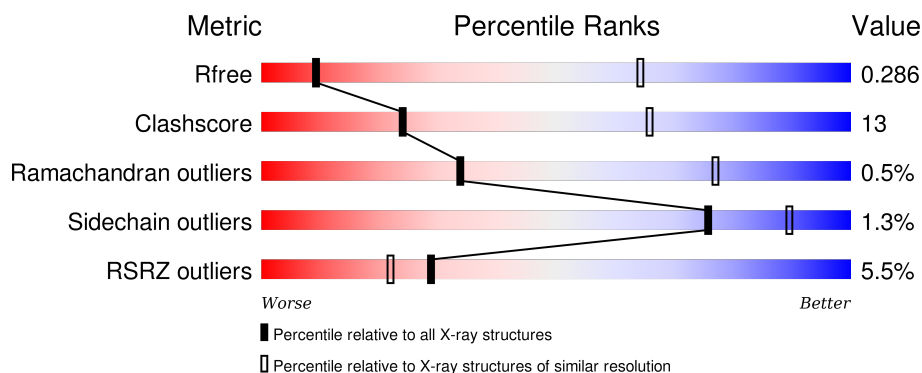
1 Overall quality at a glance

The following experimental techniques were used to determine the structure:

X-RAY DIFFRACTION

The reported resolution of this entry is 4.39 Å.

Percentile scores (ranging between 0-100) for global validation metrics of the entry are shown in the following graphic. The table shows the number of entries on which the scores are based.



Metric	Whole archive (#Entries)	Similar resolution (#Entries, resolution range(Å))
R_{free}	91344	1063 (5.08-3.60)
Clashscore	102246	1171 (5.08-3.60)
Ramachandran outliers	100387	1110 (5.08-3.60)
Sidechain outliers	100360	1093 (5.08-3.60)
RSRZ outliers	91569	1067 (5.08-3.60)

The table below summarises the geometric issues observed across the polymeric chains and their fit to the electron density. The red, orange, yellow and green segments on the lower bar indicate the fraction of residues that contain outliers for ≥ 3 , 2, 1 and 0 types of geometric quality criteria. A grey segment represents the fraction of residues that are not modelled. The numeric value for each fraction is indicated below the corresponding segment, with a dot representing fractions $\leq 5\%$. The upper red bar (where present) indicates the fraction of residues that have poor fit to the electron density. The numeric value is given above the bar.

Mol	Chain	Length	Quality of chain
1	A	184	<div> <div>5%</div> <div>70%</div> <div>26%</div> <div>..</div> </div>
1	B	184	<div> <div>3%</div> <div>73%</div> <div>23%</div> <div>..</div> </div>
1	C	184	<div> <div>11%</div> <div>76%</div> <div>21%</div> <div>.</div> </div>
2	D	633	<div> <div>5%</div> <div>61%</div> <div>17%</div> <div>21%</div> </div>
2	E	633	<div> <div>3%</div> <div>62%</div> <div>17%</div> <div>20%</div> </div>

Continued on next page...

Continued from previous page...

Mol	Chain	Length	Quality of chain
2	F	633	<div><div></div><div>5%</div><div>59%</div><div>19%</div><div>•</div><div>20%</div></div>

2 Entry composition

There are 4 unique types of molecules in this entry. The entry contains 16493 atoms, of which 0 are hydrogens and 0 are deuteriums.

In the tables below, the ZeroOcc column contains the number of atoms modelled with zero occupancy, the AltConf column contains the number of residues with at least one atom in alternate conformation and the Trace column contains the number of residues modelled with at most 2 atoms.

- Molecule 1 is a protein called Ras-related C3 botulinum toxin substrate 1.

Mol	Chain	Residues	Atoms					ZeroOcc	AltConf	Trace
1	A	178	Total	C	N	O	S	0	0	0
			1392	895	230	259	8			
1	B	178	Total	C	N	O	S	0	0	0
			1392	895	230	259	8			
1	C	178	Total	C	N	O	S	0	0	0
			1392	895	230	259	8			

There are 21 discrepancies between the modelled and reference sequences:

Chain	Residue	Modelled	Actual	Comment	Reference
A	178	LYS	-	EXPRESSION TAG	UNP P63000
A	179	HIS	-	EXPRESSION TAG	UNP P63000
A	180	HIS	-	EXPRESSION TAG	UNP P63000
A	181	HIS	-	EXPRESSION TAG	UNP P63000
A	182	HIS	-	EXPRESSION TAG	UNP P63000
A	183	HIS	-	EXPRESSION TAG	UNP P63000
A	184	HIS	-	EXPRESSION TAG	UNP P63000
B	178	LYS	-	EXPRESSION TAG	UNP P63000
B	179	HIS	-	EXPRESSION TAG	UNP P63000
B	180	HIS	-	EXPRESSION TAG	UNP P63000
B	181	HIS	-	EXPRESSION TAG	UNP P63000
B	182	HIS	-	EXPRESSION TAG	UNP P63000
B	183	HIS	-	EXPRESSION TAG	UNP P63000
B	184	HIS	-	EXPRESSION TAG	UNP P63000
C	178	LYS	-	EXPRESSION TAG	UNP P63000
C	179	HIS	-	EXPRESSION TAG	UNP P63000
C	180	HIS	-	EXPRESSION TAG	UNP P63000
C	181	HIS	-	EXPRESSION TAG	UNP P63000
C	182	HIS	-	EXPRESSION TAG	UNP P63000
C	183	HIS	-	EXPRESSION TAG	UNP P63000
C	184	HIS	-	EXPRESSION TAG	UNP P63000

- Molecule 2 is a protein called Plexin-B1.

Mol	Chain	Residues	Atoms					ZeroOcc	AltConf	Trace
2	D	503	Total	C	N	O	S	0	0	0
			4061	2608	698	741	14			
2	E	505	Total	C	N	O	S	0	0	0
			4076	2619	700	743	14			
2	F	506	Total	C	N	O	S	0	0	0
			4081	2622	701	744	14			

There are 27 discrepancies between the modelled and reference sequences:

Chain	Residue	Modelled	Actual	Comment	Reference
D	1503	MET	-	EXPRESSION TAG	UNP O43157
D	1504	GLY	-	EXPRESSION TAG	UNP O43157
D	1505	HIS	-	EXPRESSION TAG	UNP O43157
D	1506	HIS	-	EXPRESSION TAG	UNP O43157
D	1507	HIS	-	EXPRESSION TAG	UNP O43157
D	1508	HIS	-	EXPRESSION TAG	UNP O43157
D	1509	HIS	-	EXPRESSION TAG	UNP O43157
D	1510	HIS	-	EXPRESSION TAG	UNP O43157
D	1625	THR	SER	SEE REMARK 999	UNP O43157
E	1503	MET	-	EXPRESSION TAG	UNP O43157
E	1504	GLY	-	EXPRESSION TAG	UNP O43157
E	1505	HIS	-	EXPRESSION TAG	UNP O43157
E	1506	HIS	-	EXPRESSION TAG	UNP O43157
E	1507	HIS	-	EXPRESSION TAG	UNP O43157
E	1508	HIS	-	EXPRESSION TAG	UNP O43157
E	1509	HIS	-	EXPRESSION TAG	UNP O43157
E	1510	HIS	-	EXPRESSION TAG	UNP O43157
E	1625	THR	SER	SEE REMARK 999	UNP O43157
F	1503	MET	-	EXPRESSION TAG	UNP O43157
F	1504	GLY	-	EXPRESSION TAG	UNP O43157
F	1505	HIS	-	EXPRESSION TAG	UNP O43157
F	1506	HIS	-	EXPRESSION TAG	UNP O43157
F	1507	HIS	-	EXPRESSION TAG	UNP O43157
F	1508	HIS	-	EXPRESSION TAG	UNP O43157
F	1509	HIS	-	EXPRESSION TAG	UNP O43157
F	1510	HIS	-	EXPRESSION TAG	UNP O43157
F	1625	THR	SER	SEE REMARK 999	UNP O43157

- Molecule 3 is MAGNESIUM ION (three-letter code: MG) (formula: Mg).

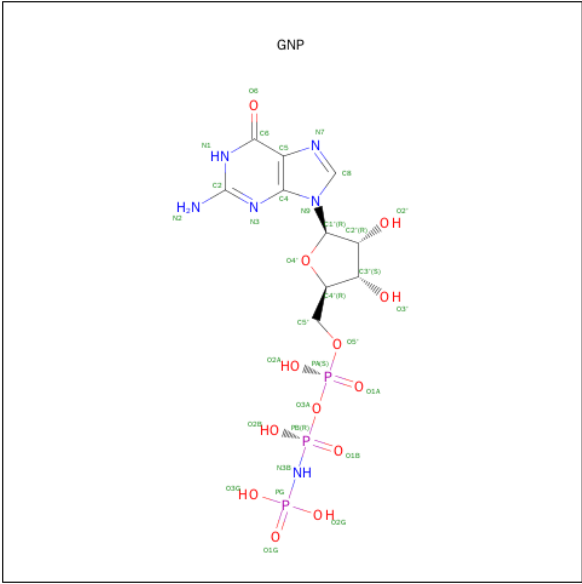
Mol	Chain	Residues	Atoms		ZeroOcc	AltConf
3	B	1	Total	Mg	0	0
			1	1		

Continued on next page...

Continued from previous page...

Mol	Chain	Residues	Atoms		ZeroOcc	AltConf
3	A	1	Total	Mg	0	0
			1	1		
3	C	1	Total	Mg	0	0
			1	1		

- Molecule 4 is PHOSPHOAMINOPHOSPHONIC ACID-GUANYLATE ESTER (three-letter code: GNP) (formula: C₁₀H₁₇N₆O₁₃P₃).

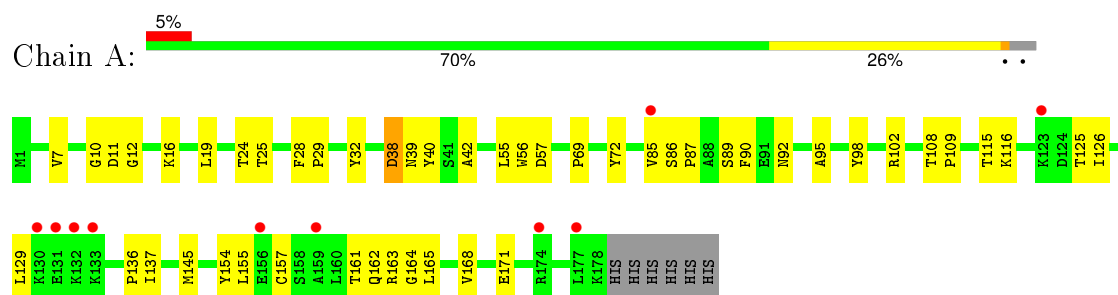


Mol	Chain	Residues	Atoms					ZeroOcc	AltConf
4	A	1	Total	C	N	O	P	0	0
			32	10	6	13	3		
4	B	1	Total	C	N	O	P	0	0
			32	10	6	13	3		
4	C	1	Total	C	N	O	P	0	0
			32	10	6	13	3		

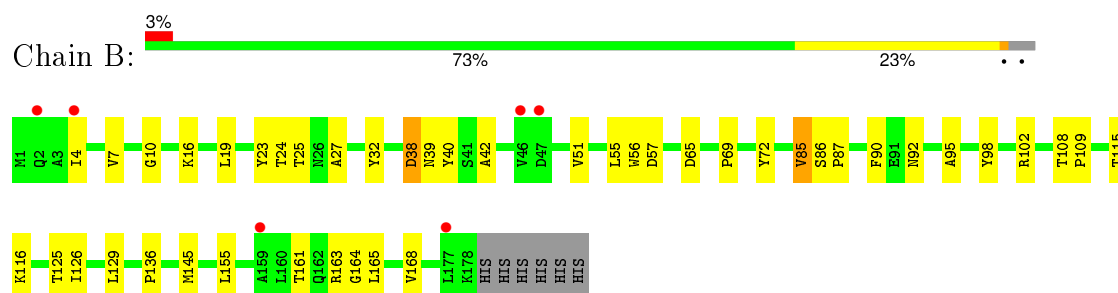
3 Residue-property plots

These plots are drawn for all protein, RNA and DNA chains in the entry. The first graphic for a chain summarises the proportions of errors displayed in the second graphic. The second graphic shows the sequence view annotated by issues in geometry and electron density. Residues are color-coded according to the number of geometric quality criteria for which they contain at least one outlier: green = 0, yellow = 1, orange = 2 and red = 3 or more. A red dot above a residue indicates a poor fit to the electron density ($RSRZ > 2$). Stretches of 2 or more consecutive residues without any outlier are shown as a green connector. Residues present in the sample, but not in the model, are shown in grey.

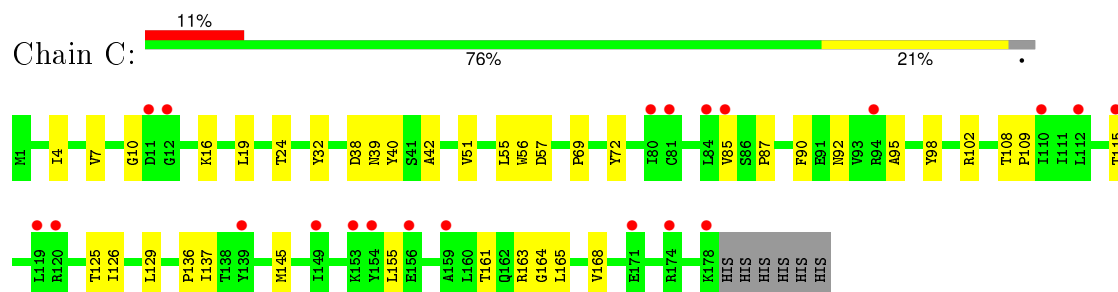
- Molecule 1: Ras-related C3 botulinum toxin substrate 1



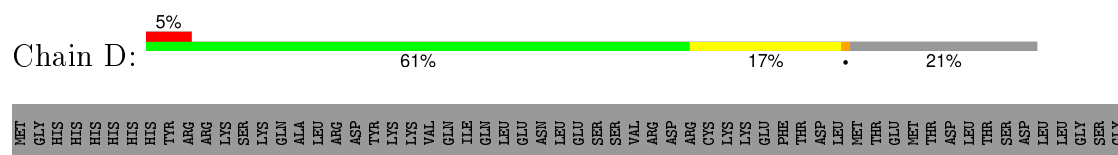
- Molecule 1: Ras-related C3 botulinum toxin substrate 1

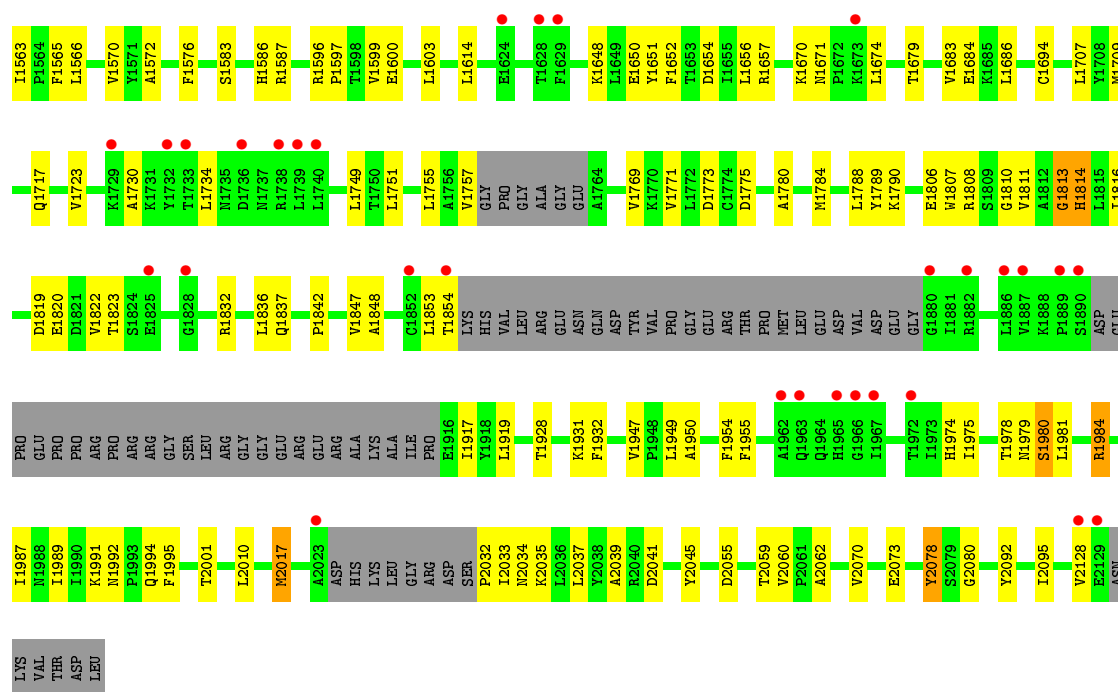


- Molecule 1: Ras-related C3 botulinum toxin substrate 1

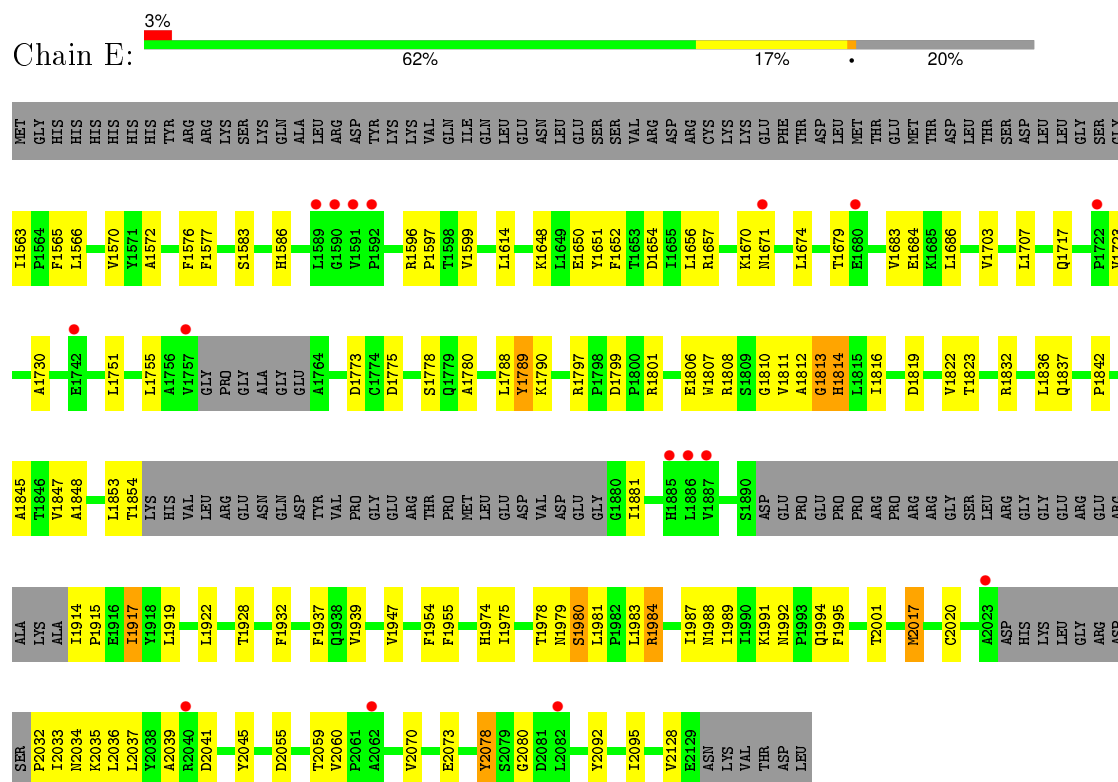


- Molecule 2: Plexin-B1

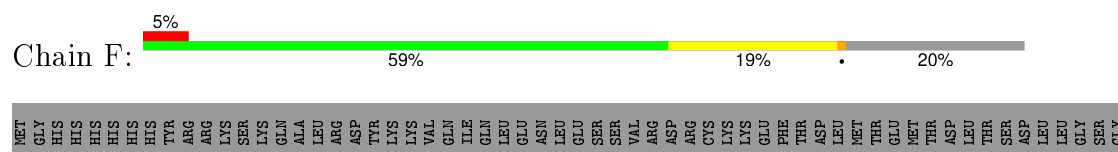


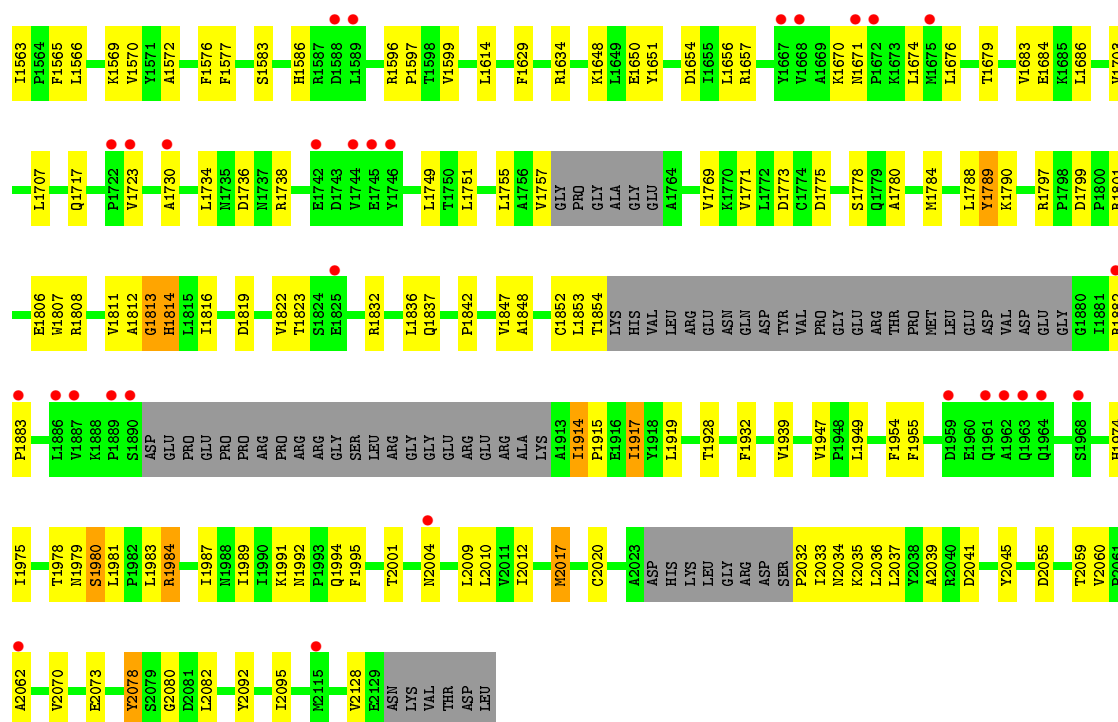


- Molecule 2: Plexin-B1



- Molecule 2: Plexin-B1





4 Data and refinement statistics

Property	Value	Source
Space group	I 21 21 21	Depositor
Cell constants a, b, c, α , β , γ	142.34Å 224.25Å 258.16Å 90.00° 90.00° 90.00°	Depositor
Resolution (Å)	47.81 – 4.39 47.81 – 4.39	Depositor EDS
% Data completeness (in resolution range)	(Not available) (47.81-4.39) 95.6 (47.81-4.39)	Depositor EDS
R_{merge}	(Not available)	Depositor
R_{sym}	(Not available)	Depositor
$\langle I/\sigma(I) \rangle$ ¹	3.27 (at 4.45Å)	Xtriage
Refinement program	BUSTER 2.9.2	Depositor
R, R_{free}	0.234 , 0.264 0.255 , 0.286	Depositor DCC
R_{free} test set	1318 reflections (5.17%)	DCC
Wilson B-factor (Å ²)	186.5	Xtriage
Anisotropy	0.516	Xtriage
Bulk solvent k_{sol} (e/Å ³), B_{sol} (Å ²)	0.31 , 205.8	EDS
Estimated twinning fraction	No twinning to report.	Xtriage
L-test for twinning ²	$\langle L \rangle = 0.45$, $\langle L^2 \rangle = 0.28$	Xtriage
Outliers	0 of 25522 reflections	Xtriage
F_o, F_c correlation	0.90	EDS
Total number of atoms	16493	wwPDB-VP
Average B, all atoms (Å ²)	124.0	wwPDB-VP

Xtriage's analysis on translational NCS is as follows: *The largest off-origin peak in the Patterson function is 3.60% of the height of the origin peak. No significant pseudotranslation is detected.*

¹Intensities estimated from amplitudes.

²Theoretical values of $\langle |L| \rangle$, $\langle L^2 \rangle$ for acentric reflections are 0.5, 0.375 respectively for untwinned datasets, and 0.333, 0.2 for perfectly twinned datasets.

5 Model quality

5.1 Standard geometry

Bond lengths and bond angles in the following residue types are not validated in this section: GNP, MG

The Z score for a bond length (or angle) is the number of standard deviations the observed value is removed from the expected value. A bond length (or angle) with $|Z| > 5$ is considered an outlier worth inspection. RMSZ is the root-mean-square of all Z scores of the bond lengths (or angles).

Mol	Chain	Bond lengths		Bond angles	
		RMSZ	$\# Z > 5$	RMSZ	$\# Z > 5$
1	A	0.43	0/1422	0.74	2/1933 (0.1%)
1	B	0.45	0/1422	0.72	1/1933 (0.1%)
1	C	0.43	0/1422	0.71	0/1933
2	D	0.48	0/4145	0.75	5/5626 (0.1%)
2	E	0.46	0/4161	0.75	6/5649 (0.1%)
2	F	0.48	0/4166	0.75	6/5656 (0.1%)
All	All	0.47	0/16738	0.74	20/22730 (0.1%)

There are no bond length outliers.

All (20) bond angle outliers are listed below:

Mol	Chain	Res	Type	Atoms	Z	Observed(°)	Ideal(°)
2	D	1980	SER	N-CA-C	-8.45	88.18	111.00
2	F	1980	SER	N-CA-C	-7.89	89.71	111.00
2	E	1980	SER	N-CA-C	-7.71	90.20	111.00
2	F	1980	SER	CB-CA-C	7.57	124.49	110.10
2	D	1980	SER	CB-CA-C	7.27	123.91	110.10
2	F	1917	ILE	N-CA-C	7.27	130.63	111.00
2	E	1917	ILE	N-CA-C	7.08	130.12	111.00
2	E	1980	SER	CB-CA-C	6.86	123.13	110.10
1	A	162	GLN	CA-CB-CG	6.56	127.83	113.40
2	F	1577	PHE	N-CA-C	6.44	128.39	111.00
2	D	1814	HIS	N-CA-C	6.37	128.20	111.00
2	E	1814	HIS	N-CA-C	6.35	128.13	111.00
2	F	1814	HIS	N-CA-C	6.29	127.97	111.00
2	F	1789	TYR	CB-CA-C	-5.96	98.47	110.40
2	E	1789	TYR	CB-CA-C	-5.78	98.84	110.40
2	D	1789	TYR	CB-CA-C	-5.69	99.01	110.40
2	D	1917	ILE	N-CA-C	5.59	126.09	111.00
2	E	1577	PHE	N-CA-C	5.23	125.12	111.00

Continued on next page...

Continued from previous page...

Mol	Chain	Res	Type	Atoms	Z	Observed(°)	Ideal(°)
1	A	38	ASP	N-CA-C	5.17	124.96	111.00
1	B	38	ASP	N-CA-C	5.06	124.65	111.00

There are no chirality outliers.

There are no planarity outliers.

5.2 Too-close contacts ⓘ

In the following table, the Non-H and H(model) columns list the number of non-hydrogen atoms and hydrogen atoms in the chain respectively. The H(added) column lists the number of hydrogen atoms added and optimized by MolProbity. The Clashes column lists the number of clashes within the asymmetric unit, whereas Symm-Clashes lists symmetry related clashes.

Mol	Chain	Non-H	H(model)	H(added)	Clashes	Symm-Clashes
1	A	1392	0	1418	44	0
1	B	1392	0	1418	40	0
1	C	1392	0	1418	41	0
2	D	4061	0	4121	98	0
2	E	4076	0	4139	113	0
2	F	4081	0	4144	118	0
3	A	1	0	0	0	0
3	B	1	0	0	0	0
3	C	1	0	0	0	0
4	A	32	0	13	3	0
4	B	32	0	13	3	0
4	C	32	0	13	3	0
All	All	16493	0	16697	436	0

The all-atom clashscore is defined as the number of clashes found per 1000 atoms (including hydrogen atoms). The all-atom clashscore for this structure is 13.

All (436) close contacts within the same asymmetric unit are listed below, sorted by their clash magnitude.

Atom-1	Atom-2	Interatomic distance (Å)	Clash overlap (Å)
1:C:19:LEU:CD1	1:C:165:LEU:HD13	1.35	1.53
1:C:19:LEU:HD11	1:C:165:LEU:CD1	1.45	1.42
1:C:19:LEU:CD1	1:C:165:LEU:CD1	1.94	1.41
1:C:19:LEU:HD12	1:C:165:LEU:CD1	1.74	1.14
2:E:1922:LEU:CD1	2:E:2033:ILE:HD11	1.77	1.14
2:E:1922:LEU:HD13	2:E:2033:ILE:HD11	1.10	1.09

Continued on next page...

Continued from previous page...

Atom-1	Atom-2	Interatomic distance (Å)	Clash overlap (Å)
1:B:19:LEU:HD12	1:B:165:LEU:CD1	1.86	1.06
1:B:19:LEU:HD12	1:B:165:LEU:HD11	1.38	1.05
1:A:39:ASN:ND2	2:D:1813:GLY:O	1.90	1.04
2:D:1949:LEU:HD11	2:D:2062:ALA:HB1	1.41	1.02
2:F:1980:SER:O	2:F:1984:ARG:HB2	1.59	1.01
2:F:1949:LEU:HD11	2:F:2062:ALA:HB1	1.41	1.01
2:F:2078:TYR:CE2	2:F:2080:GLY:O	2.14	1.00
2:D:1980:SER:O	2:D:1984:ARG:HB2	1.62	0.99
2:E:1975:ILE:HA	2:E:1978:THR:HG22	1.43	0.99
2:F:1975:ILE:HA	2:F:1978:THR:HG22	1.45	0.99
2:E:1984:ARG:O	2:E:1988:ASN:ND2	1.97	0.97
1:C:19:LEU:CD1	1:C:165:LEU:HD11	1.90	0.96
2:D:1975:ILE:HA	2:D:1978:THR:HG22	1.46	0.95
2:E:1980:SER:O	2:E:1984:ARG:HB2	1.67	0.94
2:D:2078:TYR:CE2	2:D:2080:GLY:O	2.19	0.94
2:E:2078:TYR:CE2	2:E:2080:GLY:O	2.20	0.94
2:F:1566:LEU:HD22	2:F:1570:VAL:HG11	1.50	0.92
2:D:1566:LEU:HD22	2:D:1570:VAL:HG11	1.51	0.92
2:D:1853:LEU:HD12	2:D:1854:THR:N	1.85	0.92
2:F:1949:LEU:HD11	2:F:2062:ALA:CB	2.00	0.91
2:F:1980:SER:O	2:F:1984:ARG:CB	2.19	0.91
2:F:1814:HIS:O	2:F:1814:HIS:ND1	2.02	0.91
2:D:1980:SER:O	2:D:1984:ARG:CB	2.20	0.90
2:E:1778:SER:HB2	2:E:1819:ASP:OD2	1.71	0.90
2:D:1814:HIS:ND1	2:D:1814:HIS:O	2.04	0.90
2:D:1949:LEU:HD11	2:D:2062:ALA:CB	2.00	0.90
1:C:19:LEU:HD12	1:C:165:LEU:HD11	1.51	0.89
2:E:1814:HIS:ND1	2:E:1814:HIS:O	2.04	0.89
2:F:2033:ILE:HG13	2:F:2034:ASN:H	1.38	0.89
2:E:1853:LEU:HD12	2:E:1854:THR:N	1.89	0.88
2:D:2033:ILE:HG13	2:D:2034:ASN:H	1.39	0.88
2:E:1566:LEU:HD22	2:E:1570:VAL:HG11	1.53	0.88
2:D:1994:GLN:CD	2:D:2001:THR:HG22	1.95	0.87
1:C:19:LEU:HD12	1:C:165:LEU:HD13	1.36	0.87
2:D:1949:LEU:CD1	2:D:2062:ALA:CB	2.53	0.86
2:E:1994:GLN:CD	2:E:2001:THR:HG22	1.93	0.86
2:F:1853:LEU:HD12	2:F:1854:THR:N	1.89	0.86
2:E:1980:SER:O	2:E:1984:ARG:CB	2.24	0.85
2:F:1778:SER:HB2	2:F:1819:ASP:OD2	1.76	0.85
2:F:1816:ILE:CD1	2:F:1853:LEU:HD21	2.06	0.84
1:C:19:LEU:HD11	1:C:165:LEU:HD13	1.05	0.84

Continued on next page...

Continued from previous page...

Atom-1	Atom-2	Interatomic distance (Å)	Clash overlap (Å)
1:B:155:LEU:HD13	1:B:168:VAL:HA	1.60	0.83
1:B:19:LEU:CD1	1:B:165:LEU:CD1	2.56	0.82
2:E:1922:LEU:CD1	2:E:2033:ILE:CD1	2.56	0.82
1:C:155:LEU:HD13	1:C:168:VAL:HA	1.62	0.82
1:C:38:ASP:OD2	1:C:40:TYR:CZ	2.32	0.82
2:F:1949:LEU:CD1	2:F:2062:ALA:CB	2.57	0.81
1:C:19:LEU:HD11	1:C:165:LEU:HD12	1.58	0.80
2:E:1922:LEU:HD13	2:E:2033:ILE:CD1	2.02	0.80
2:E:1975:ILE:HA	2:E:1978:THR:CG2	2.12	0.79
1:A:155:LEU:CD2	1:A:168:VAL:HA	2.14	0.78
2:E:2033:ILE:HG23	2:E:2034:ASN:H	1.50	0.77
1:A:19:LEU:HG	1:A:165:LEU:CD1	2.16	0.76
2:D:1975:ILE:HA	2:D:1978:THR:CG2	2.16	0.76
2:F:2033:ILE:HG13	2:F:2034:ASN:N	2.01	0.76
2:D:1949:LEU:CD1	2:D:2062:ALA:HB1	2.15	0.75
2:D:2033:ILE:HG13	2:D:2034:ASN:N	2.02	0.74
4:B:200:GNP:H8	4:B:200:GNP:H5'2	1.70	0.73
1:C:38:ASP:OD1	1:C:39:ASN:N	2.21	0.73
2:F:1975:ILE:HA	2:F:1978:THR:CG2	2.17	0.73
2:F:1816:ILE:CD1	2:F:1853:LEU:CD2	2.67	0.72
4:A:200:GNP:H5'2	4:A:200:GNP:H8	1.71	0.72
2:D:1566:LEU:HD22	2:D:1570:VAL:CG1	2.18	0.72
1:A:11:ASP:OD1	1:A:12:GLY:N	2.23	0.72
2:F:1816:ILE:HD12	2:F:1853:LEU:HD21	1.72	0.72
4:C:200:GNP:H5'2	4:C:200:GNP:H8	1.71	0.72
1:A:19:LEU:HD11	1:A:157:CYS:SG	2.30	0.72
2:F:1563:ILE:HG21	2:F:1565:PHE:HE1	1.54	0.72
2:F:2032:PRO:HD2	2:F:2035:LYS:HB2	1.72	0.72
2:D:2032:PRO:HD2	2:D:2035:LYS:HB2	1.72	0.71
2:E:2032:PRO:HD2	2:E:2035:LYS:HB2	1.73	0.71
2:F:1563:ILE:HG22	2:F:1565:PHE:CE1	2.26	0.70
2:E:1563:ILE:HG22	2:E:1565:PHE:CE1	2.26	0.70
1:B:23:TYR:HB2	1:B:165:LEU:HD21	1.74	0.70
2:F:1949:LEU:CD1	2:F:2062:ALA:HB2	2.21	0.70
2:F:1566:LEU:HD22	2:F:1570:VAL:CG1	2.19	0.70
2:F:1563:ILE:CG2	2:F:1565:PHE:CE1	2.75	0.70
2:E:1994:GLN:CD	2:E:2001:THR:CG2	2.60	0.69
2:D:1949:LEU:CD1	2:D:2062:ALA:HB2	2.21	0.69
1:B:19:LEU:CD1	1:B:165:LEU:HD12	2.22	0.69
1:A:155:LEU:HD22	1:A:168:VAL:HA	1.73	0.69
2:F:1563:ILE:CG2	2:F:1565:PHE:HE1	2.05	0.68

Continued on next page...

Continued from previous page...

Atom-1	Atom-2	Interatomic distance (Å)	Clash overlap (Å)
2:F:1656:LEU:HD21	2:F:1686:LEU:HB3	1.75	0.68
1:B:32:TYR:HE1	4:B:200:GNP:HNB3	1.41	0.68
2:D:1679:THR:HG22	2:D:1679:THR:O	1.93	0.68
2:D:1994:GLN:CD	2:D:2001:THR:CG2	2.62	0.68
2:E:1566:LEU:HD22	2:E:1570:VAL:CG1	2.24	0.67
2:E:1563:ILE:HG21	2:E:1565:PHE:HE1	1.58	0.67
1:A:32:TYR:HE1	4:A:200:GNP:HNB3	1.43	0.67
2:E:2033:ILE:HG23	2:E:2034:ASN:N	2.10	0.67
2:E:1563:ILE:CG2	2:E:1565:PHE:HE1	2.07	0.66
2:D:1709:MET:HB3	2:D:1932:PHE:CE1	2.31	0.66
2:E:1563:ILE:CG2	2:E:1565:PHE:CE1	2.77	0.66
1:C:32:TYR:HE1	4:C:200:GNP:HNB3	1.42	0.66
1:A:19:LEU:HG	1:A:165:LEU:HD13	1.76	0.66
2:E:1679:THR:HG22	2:E:1679:THR:O	1.96	0.66
1:B:155:LEU:CD1	1:B:168:VAL:HA	2.27	0.65
2:D:1563:ILE:HD12	2:D:1565:PHE:HE1	1.61	0.65
2:E:1994:GLN:NE2	2:E:2001:THR:HG22	2.11	0.64
1:C:155:LEU:CD1	1:C:168:VAL:HA	2.27	0.64
1:A:126:ILE:HA	1:A:129:LEU:HD12	1.79	0.64
1:C:126:ILE:HA	1:C:129:LEU:HD12	1.80	0.64
2:D:1563:ILE:HD12	2:D:1565:PHE:CE1	2.32	0.64
2:D:1980:SER:O	2:D:1984:ARG:HB3	1.98	0.63
2:E:1755:LEU:HB2	2:E:1788:LEU:HD22	1.80	0.63
2:F:1755:LEU:HB2	2:F:1788:LEU:HD22	1.79	0.63
2:D:1994:GLN:NE2	2:D:2001:THR:HG22	2.13	0.62
2:D:1751:LEU:HD12	2:D:1751:LEU:O	2.00	0.62
2:F:1949:LEU:CD1	2:F:2062:ALA:HB1	2.20	0.61
2:D:1819:ASP:OD1	2:D:1820:GLU:N	2.32	0.61
2:D:1755:LEU:HB2	2:D:1788:LEU:HD22	1.83	0.61
2:F:1563:ILE:HG22	2:F:1565:PHE:CD1	2.35	0.61
2:E:1707:LEU:HD21	2:E:1989:ILE:HG22	1.82	0.60
2:F:1980:SER:O	2:F:1984:ARG:HB3	2.00	0.60
1:C:39:ASN:ND2	2:F:1814:HIS:HB3	2.17	0.60
2:E:1751:LEU:O	2:E:1751:LEU:HD12	2.00	0.60
1:A:19:LEU:HG	1:A:165:LEU:HD11	1.84	0.60
1:A:24:THR:HG22	1:A:42:ALA:HB2	1.85	0.59
2:E:2033:ILE:CG2	2:E:2034:ASN:H	2.14	0.59
2:F:2033:ILE:CG1	2:F:2034:ASN:H	2.13	0.59
2:E:1563:ILE:HG22	2:E:1565:PHE:CD1	2.37	0.59
2:F:1807:TRP:CZ2	2:F:1842:PRO:HD3	2.37	0.59
1:B:126:ILE:HA	1:B:129:LEU:HD12	1.84	0.59

Continued on next page...

Continued from previous page...

Atom-1	Atom-2	Interatomic distance (Å)	Clash overlap (Å)
1:A:69:PRO:HA	1:A:72:TYR:CD2	2.38	0.58
1:B:69:PRO:HA	1:B:72:TYR:CD2	2.38	0.58
2:F:2078:TYR:HE2	2:F:2080:GLY:O	1.84	0.58
2:F:1679:THR:HG22	2:F:1679:THR:O	2.03	0.58
2:F:1814:HIS:CG	2:F:1814:HIS:O	2.54	0.58
1:B:39:ASN:ND2	2:E:1814:HIS:HB3	2.17	0.58
2:D:1947:VAL:HG23	2:D:2055:ASP:OD2	2.03	0.58
2:D:1814:HIS:CG	2:D:1814:HIS:O	2.56	0.58
1:A:155:LEU:HD23	1:A:168:VAL:HA	1.86	0.58
2:D:1652:PHE:O	2:D:1656:LEU:HD13	2.04	0.58
2:D:1807:TRP:CZ2	2:D:1842:PRO:HD3	2.39	0.58
2:F:1978:THR:OG1	2:F:2020:CYS:HB3	2.04	0.58
2:E:1980:SER:O	2:E:1984:ARG:HB3	2.00	0.58
2:E:1914:ILE:HB	2:E:1915:PRO:HD2	1.85	0.58
1:C:69:PRO:HA	1:C:72:TYR:CD2	2.38	0.58
2:E:1814:HIS:CG	2:E:1814:HIS:O	2.56	0.58
2:E:2033:ILE:HG12	2:E:2037:LEU:HD12	1.85	0.57
1:C:38:ASP:OD2	1:C:40:TYR:OH	2.22	0.57
1:B:27:ALA:HB1	2:F:1917:ILE:HG12	1.86	0.57
1:A:161:THR:HB	1:A:163:ARG:HG3	1.86	0.57
2:D:1807:TRP:HZ2	2:D:1842:PRO:HD3	1.68	0.57
2:D:1717:GLN:HG2	2:D:1928:THR:HG21	1.86	0.57
2:E:1807:TRP:CZ2	2:E:1842:PRO:HD3	2.40	0.57
2:F:2059:THR:HG22	2:F:2060:VAL:N	2.20	0.57
2:F:1807:TRP:HZ2	2:F:1842:PRO:HD3	1.68	0.57
2:D:1992:ASN:HD21	2:D:1994:GLN:HB2	1.70	0.56
1:C:24:THR:HG22	1:C:42:ALA:HB2	1.86	0.56
2:F:1684:GLU:HB3	2:F:1984:ARG:HH22	1.71	0.56
2:E:1807:TRP:HZ2	2:E:1842:PRO:HD3	1.71	0.56
2:F:1717:GLN:HG2	2:F:1928:THR:HG21	1.87	0.56
2:E:2059:THR:HG22	2:E:2060:VAL:N	2.19	0.56
1:C:161:THR:HB	1:C:163:ARG:HG3	1.85	0.56
1:B:27:ALA:HB1	2:F:1917:ILE:CG1	2.35	0.56
2:E:1947:VAL:HG23	2:E:2055:ASP:OD2	2.06	0.56
1:A:29:PRO:HA	2:E:1917:ILE:CG2	2.36	0.56
2:D:1707:LEU:HD21	2:D:1989:ILE:HG22	1.87	0.56
1:A:38:ASP:OD1	2:D:1810:GLY:HA3	2.06	0.56
2:F:1914:ILE:HG13	2:F:1915:PRO:HD2	1.87	0.56
2:D:1808:ARG:HH12	2:D:1848:ALA:HB2	1.71	0.56
1:B:161:THR:HB	1:B:163:ARG:HG3	1.87	0.55
2:F:1751:LEU:HD12	2:F:1751:LEU:O	2.05	0.55

Continued on next page...

Continued from previous page...

Atom-1	Atom-2	Interatomic distance (Å)	Clash overlap (Å)
2:F:1947:VAL:HG23	2:F:2055:ASP:OD2	2.06	0.55
1:C:40:TYR:HB2	1:C:55:LEU:HB2	1.88	0.55
2:E:1778:SER:N	2:E:1819:ASP:OD1	2.40	0.55
1:B:24:THR:HG22	1:B:42:ALA:HB2	1.88	0.55
2:D:2059:THR:HG22	2:D:2060:VAL:N	2.20	0.55
2:D:2078:TYR:HE2	2:D:2080:GLY:O	1.85	0.54
1:C:19:LEU:HD22	1:C:115:THR:HG22	1.88	0.54
2:F:1707:LEU:HD21	2:F:1989:ILE:CG2	2.38	0.54
2:D:2033:ILE:CG1	2:D:2034:ASN:H	2.14	0.54
1:A:40:TYR:HB2	1:A:55:LEU:HB2	1.89	0.54
1:B:40:TYR:HB2	1:B:55:LEU:HB2	1.90	0.54
1:C:39:ASN:HB2	2:F:1812:ALA:HB3	1.90	0.53
2:F:1983:LEU:HD21	2:F:2017:MET:HA	1.90	0.53
2:E:1654:ASP:HB2	2:E:1657:ARG:HH21	1.73	0.53
1:B:19:LEU:HD11	1:B:165:LEU:HG	1.89	0.53
2:F:1780:ALA:HB2	2:F:1836:LEU:HD11	1.91	0.53
2:E:1652:PHE:O	2:E:1656:LEU:HD13	2.09	0.53
2:E:1707:LEU:HD21	2:E:1989:ILE:CG2	2.39	0.52
1:A:154:TYR:C	1:A:155:LEU:HD12	2.29	0.52
2:F:1778:SER:N	2:F:1819:ASP:OD1	2.43	0.52
2:D:1709:MET:HB3	2:D:1932:PHE:CD1	2.44	0.52
1:A:129:LEU:HD13	1:A:136:PRO:HD3	1.92	0.52
2:D:1919:LEU:HD21	2:F:1811:VAL:CG1	2.40	0.52
2:F:1975:ILE:HG23	2:F:1979:ASN:ND2	2.25	0.52
2:F:1992:ASN:HD21	2:F:1994:GLN:HB2	1.74	0.52
1:B:129:LEU:HD13	1:B:136:PRO:HD3	1.92	0.52
2:E:2059:THR:CG2	2:E:2060:VAL:N	2.73	0.51
2:D:1671:ASN:HB3	2:D:1674:LEU:HD12	1.92	0.51
2:E:1780:ALA:HB2	2:E:1836:LEU:HD11	1.92	0.51
1:A:90:PHE:CE2	1:A:145:MET:HE3	2.45	0.51
2:E:1974:HIS:O	2:E:1978:THR:HG22	2.10	0.51
2:E:1992:ASN:HD21	2:E:1994:GLN:HB2	1.75	0.51
2:D:1563:ILE:O	2:D:1563:ILE:HG13	2.11	0.51
1:C:129:LEU:HD13	1:C:136:PRO:HD3	1.92	0.51
2:E:1808:ARG:HH12	2:E:1848:ALA:HB2	1.76	0.51
1:B:38:ASP:OD1	2:E:1810:GLY:HA3	2.10	0.51
1:C:85:VAL:HG11	1:C:125:THR:HG21	1.93	0.51
2:E:1717:GLN:HG2	2:E:1928:THR:HG21	1.93	0.51
2:D:1780:ALA:HB2	2:D:1836:LEU:HD11	1.91	0.51
2:E:2078:TYR:HE2	2:E:2080:GLY:O	1.86	0.51
2:F:1654:ASP:HB2	2:F:1657:ARG:HH21	1.75	0.51

Continued on next page...

Continued from previous page...

Atom-1	Atom-2	Interatomic distance (Å)	Clash overlap (Å)
1:C:38:ASP:OD2	1:C:40:TYR:CE2	2.63	0.50
2:D:1654:ASP:HB2	2:D:1657:ARG:HH21	1.75	0.50
1:B:115:THR:HG22	1:B:116:LYS:N	2.26	0.50
2:D:1974:HIS:O	2:D:1978:THR:HG22	2.12	0.50
2:F:1583:SER:HB3	2:F:1586:HIS:HD2	1.76	0.50
1:A:115:THR:HG22	1:A:116:LYS:N	2.27	0.50
2:F:1987:ILE:HD11	2:F:2017:MET:HB2	1.94	0.50
2:F:1671:ASN:HB3	2:F:1674:LEU:HD12	1.94	0.50
2:F:2078:TYR:CZ	2:F:2080:GLY:O	2.63	0.49
2:F:2059:THR:CG2	2:F:2060:VAL:N	2.74	0.49
2:D:2059:THR:CG2	2:D:2060:VAL:N	2.75	0.49
2:F:1648:LYS:HB3	2:F:1651:TYR:HB3	1.94	0.49
1:A:85:VAL:HG11	1:A:125:THR:HG21	1.93	0.49
2:E:1671:ASN:HB3	2:E:1674:LEU:HD12	1.93	0.49
2:F:2092:TYR:HA	2:F:2095:ILE:HD12	1.94	0.49
2:D:1955:PHE:CZ	2:D:1981:LEU:HB3	2.48	0.49
2:E:2092:TYR:HA	2:E:2095:ILE:HD12	1.94	0.49
1:B:85:VAL:HG11	1:B:125:THR:HG21	1.93	0.49
2:F:1954:PHE:CE2	2:F:1980:SER:HB3	2.48	0.49
2:F:1656:LEU:HD21	2:F:1686:LEU:CB	2.40	0.49
2:E:1773:ASP:HB2	2:E:1837:GLN:HB2	1.95	0.49
1:C:40:TYR:HE1	1:C:57:ASP:HB2	1.78	0.48
1:C:39:ASN:HD21	2:F:1814:HIS:HB3	1.78	0.48
1:A:19:LEU:CD1	1:A:157:CYS:SG	3.01	0.48
2:D:1975:ILE:HG23	2:D:1979:ASN:ND2	2.27	0.48
2:F:1808:ARG:HH12	2:F:1848:ALA:HB2	1.78	0.48
2:F:1734:LEU:O	2:F:2033:ILE:HD12	2.14	0.48
2:D:1707:LEU:HD21	2:D:1989:ILE:CG2	2.43	0.48
1:B:40:TYR:HE1	1:B:57:ASP:HB2	1.78	0.48
2:D:1773:ASP:HB2	2:D:1837:GLN:HB2	1.95	0.48
2:E:1975:ILE:HG23	2:E:1979:ASN:ND2	2.29	0.48
2:E:1648:LYS:HB3	2:E:1651:TYR:HB3	1.96	0.48
1:B:10:GLY:N	1:B:16:LYS:HD3	2.29	0.48
2:E:1994:GLN:OE1	2:E:2001:THR:CG2	2.62	0.48
1:A:29:PRO:HA	2:E:1917:ILE:HG23	1.96	0.48
2:D:1987:ILE:O	2:D:1991:LYS:HB2	2.14	0.48
2:D:1583:SER:HB3	2:D:1586:HIS:HD2	1.78	0.47
2:D:1734:LEU:O	2:D:2033:ILE:HD12	2.14	0.47
1:A:11:ASP:OD2	1:A:89:SER:HA	2.13	0.47
2:D:1648:LYS:HB3	2:D:1651:TYR:HB3	1.95	0.47
2:D:1947:VAL:HG23	2:D:2055:ASP:CG	2.33	0.47

Continued on next page...

Continued from previous page...

Atom-1	Atom-2	Interatomic distance (Å)	Clash overlap (Å)
2:D:2092:TYR:HA	2:D:2095:ILE:HD12	1.95	0.47
2:E:1987:ILE:O	2:E:1991:LYS:HB2	2.15	0.47
2:E:1978:THR:OG1	2:E:2020:CYS:HB3	2.14	0.47
1:A:40:TYR:HE1	1:A:57:ASP:HB2	1.79	0.47
2:E:2033:ILE:CG2	2:E:2034:ASN:N	2.76	0.47
2:E:2059:THR:CG2	2:E:2060:VAL:H	2.29	0.46
2:D:1822:VAL:HG13	2:D:1823:THR:HG23	1.98	0.46
2:E:1583:SER:HB3	2:E:1586:HIS:HD2	1.79	0.46
2:E:1955:PHE:CZ	2:E:1981:LEU:HB3	2.50	0.46
2:E:1811:VAL:HG13	2:F:1919:LEU:HD21	1.97	0.46
2:F:2070:VAL:O	2:F:2073:GLU:HG2	2.15	0.46
1:A:10:GLY:N	1:A:16:LYS:HD3	2.29	0.46
2:F:1987:ILE:O	2:F:1991:LYS:HB2	2.15	0.46
1:C:10:GLY:N	1:C:16:LYS:HD3	2.30	0.46
2:E:1983:LEU:HD21	2:E:2017:MET:HA	1.97	0.46
2:E:2055:ASP:OD1	2:E:2059:THR:OG1	2.22	0.46
1:A:28:PHE:O	2:E:1917:ILE:HG22	2.16	0.46
2:F:1955:PHE:CZ	2:F:1981:LEU:HB3	2.50	0.46
2:F:1773:ASP:HB2	2:F:1837:GLN:HB2	1.97	0.46
2:F:1974:HIS:O	2:F:1978:THR:HG22	2.15	0.46
2:D:1994:GLN:OE1	2:D:2001:THR:CG2	2.64	0.46
2:F:1992:ASN:HB3	2:F:1995:PHE:CE1	2.50	0.46
2:D:1991:LYS:HE2	2:D:2010:LEU:CD1	2.46	0.46
2:D:2070:VAL:O	2:D:2073:GLU:HG2	2.16	0.46
2:D:2059:THR:CG2	2:D:2060:VAL:H	2.30	0.45
2:F:1563:ILE:HG21	2:F:1565:PHE:CE1	2.41	0.45
2:D:1751:LEU:HD22	2:D:1847:VAL:HG21	1.98	0.45
1:B:115:THR:CG2	1:B:116:LYS:N	2.79	0.45
2:F:1634:ARG:HD2	2:F:1679:THR:O	2.17	0.45
2:E:2070:VAL:O	2:E:2073:GLU:HG2	2.16	0.45
2:F:2059:THR:CG2	2:F:2060:VAL:H	2.29	0.45
2:E:1808:ARG:HG2	2:E:1813:GLY:HA3	1.99	0.45
2:F:1806:GLU:HB2	2:F:1816:ILE:HG22	1.99	0.45
2:F:1983:LEU:HD22	2:F:2017:MET:HG2	1.97	0.45
2:E:1987:ILE:HD11	2:E:2017:MET:HB2	1.99	0.45
2:E:1983:LEU:HD22	2:E:2017:MET:HG2	1.99	0.45
2:E:1684:GLU:HB3	2:E:1984:ARG:HH22	1.81	0.45
2:E:1992:ASN:HB3	2:E:1995:PHE:CE1	2.52	0.45
2:E:1707:LEU:CD2	2:E:1989:ILE:HG22	2.46	0.45
2:D:1955:PHE:HZ	2:D:1981:LEU:HB3	1.81	0.45
1:C:161:THR:CB	1:C:163:ARG:HG3	2.47	0.44

Continued on next page...

Continued from previous page...

Atom-1	Atom-2	Interatomic distance (Å)	Clash overlap (Å)
2:F:1751:LEU:HD22	2:F:1847:VAL:HG21	1.98	0.44
1:C:7:VAL:HA	1:C:56:TRP:HB2	1.99	0.44
2:D:1808:ARG:HG2	2:D:1813:GLY:HA3	1.98	0.44
2:F:1717:GLN:CG	2:F:1928:THR:HG21	2.46	0.44
2:E:1614:LEU:HD12	2:E:1614:LEU:H	1.82	0.44
2:E:1922:LEU:HD11	2:E:2033:ILE:CD1	2.41	0.44
2:E:1811:VAL:CG1	2:F:1919:LEU:HD21	2.47	0.44
2:D:1987:ILE:HD11	2:D:2017:MET:HB2	1.99	0.44
1:B:19:LEU:CD1	1:B:165:LEU:HG	2.48	0.44
1:C:39:ASN:ND2	2:F:1813:GLY:O	2.51	0.44
2:E:1751:LEU:HD22	2:E:1847:VAL:HG21	1.99	0.44
1:C:69:PRO:HA	1:C:72:TYR:CE2	2.53	0.44
1:C:90:PHE:CE2	1:C:145:MET:HE3	2.53	0.44
2:E:1806:GLU:HB2	2:E:1816:ILE:HG22	2.00	0.44
2:E:1775:ASP:O	2:E:1836:LEU:HD12	2.18	0.43
2:E:1816:ILE:O	2:E:1816:ILE:HD12	2.18	0.43
2:D:1650:GLU:H	2:D:1650:GLU:CD	2.22	0.43
2:F:1650:GLU:CD	2:F:1650:GLU:H	2.21	0.43
1:A:164:GLY:O	1:A:168:VAL:HG23	2.18	0.43
2:D:1679:THR:CG2	2:D:1679:THR:O	2.63	0.43
2:F:1947:VAL:HG23	2:F:2055:ASP:CG	2.37	0.43
2:E:2033:ILE:O	2:E:2037:LEU:HB2	2.19	0.43
2:E:1954:PHE:CE2	2:E:1980:SER:HB3	2.53	0.43
2:D:1775:ASP:O	2:D:1836:LEU:HD12	2.17	0.43
1:A:7:VAL:HA	1:A:56:TRP:HB2	2.01	0.43
2:E:1914:ILE:CB	2:E:1915:PRO:HD2	2.49	0.43
2:F:1822:VAL:HG13	2:F:1823:THR:HG23	2.00	0.43
2:F:1816:ILE:HD11	2:F:1853:LEU:HD21	1.94	0.43
2:D:1931:LYS:HG3	2:D:1932:PHE:CD2	2.53	0.43
1:A:115:THR:CG2	1:A:116:LYS:N	2.81	0.43
2:E:1822:VAL:HG13	2:E:1823:THR:HG23	2.00	0.43
2:D:1811:VAL:HG13	2:E:1919:LEU:HD21	2.00	0.43
1:B:90:PHE:CE2	1:B:145:MET:CE	3.02	0.43
1:A:155:LEU:HD21	1:A:171:GLU:HG3	2.00	0.43
2:D:1654:ASP:HA	2:D:1657:ARG:HE	1.84	0.43
2:E:1955:PHE:HZ	2:E:1981:LEU:HB3	1.83	0.43
1:C:98:TYR:CE1	1:C:102:ARG:HG3	2.54	0.43
1:B:108:THR:HA	1:B:109:PRO:HD3	1.98	0.43
2:F:1614:LEU:HD12	2:F:1614:LEU:H	1.83	0.43
1:B:98:TYR:CE1	1:B:102:ARG:HG3	2.54	0.43
2:D:1992:ASN:HB3	2:D:1995:PHE:CE1	2.54	0.43

Continued on next page...

Continued from previous page...

Atom-1	Atom-2	Interatomic distance (Å)	Clash overlap (Å)
2:E:1679:THR:CG2	2:E:1679:THR:O	2.66	0.43
2:E:1947:VAL:HG23	2:E:2055:ASP:CG	2.38	0.43
2:F:1994:GLN:HG3	2:F:2001:THR:HG21	2.00	0.43
2:D:1614:LEU:HD12	2:D:1614:LEU:H	1.84	0.43
1:A:29:PRO:HA	2:E:1917:ILE:HG22	2.01	0.43
1:A:69:PRO:HA	1:A:72:TYR:CE2	2.54	0.42
2:D:1683:VAL:HA	2:D:1686:LEU:HD12	2.01	0.42
2:F:1596:ARG:HB3	2:F:1597:PRO:HD3	2.01	0.42
2:F:1707:LEU:CD2	2:F:1989:ILE:CG2	2.97	0.42
2:E:2041:ASP:HB3	2:E:2045:TYR:CE1	2.54	0.42
2:F:1676:LEU:HA	2:F:1684:GLU:OE2	2.19	0.42
1:B:39:ASN:HD21	2:E:1814:HIS:HB3	1.81	0.42
2:F:1569:LYS:HG3	2:F:2082:LEU:HD23	2.01	0.42
4:A:200:GNP:H5'2	4:A:200:GNP:C8	2.47	0.42
1:B:69:PRO:HA	1:B:72:TYR:CE2	2.55	0.42
2:E:1572:ALA:HB1	2:E:1576:PHE:CE1	2.55	0.42
2:D:2033:ILE:O	2:D:2037:LEU:HB2	2.19	0.42
4:B:200:GNP:C8	4:B:200:GNP:H5'2	2.46	0.42
2:F:1654:ASP:HA	2:F:1657:ARG:HE	1.85	0.42
2:E:1650:GLU:H	2:E:1650:GLU:CD	2.22	0.42
2:F:1703:VAL:HG22	2:F:1939:VAL:HG12	2.02	0.42
1:B:86:SER:HA	1:B:87:PRO:HD3	1.89	0.42
1:A:25:THR:HG22	2:E:2036:LEU:HB2	2.01	0.42
2:F:1775:ASP:O	2:F:1836:LEU:HD12	2.19	0.42
1:C:92:ASN:HA	1:C:95:ALA:HB3	2.01	0.42
2:D:1806:GLU:HB2	2:D:1816:ILE:HG22	2.00	0.42
1:B:7:VAL:HA	1:B:56:TRP:HB2	2.01	0.42
2:D:1919:LEU:HD21	2:F:1811:VAL:HG13	2.00	0.42
1:C:90:PHE:CE2	1:C:145:MET:CE	3.02	0.42
2:F:2033:ILE:O	2:F:2037:LEU:HB2	2.19	0.42
2:E:1654:ASP:HA	2:E:1657:ARG:HE	1.85	0.42
2:D:1694:CYS:HB3	2:D:1950:ALA:HB2	2.01	0.42
2:F:2041:ASP:HB3	2:F:2045:TYR:CE1	2.54	0.42
2:D:1954:PHE:CE2	2:D:1980:SER:HB3	2.54	0.42
2:F:1994:GLN:CD	2:F:2001:THR:OG1	2.58	0.42
2:E:1789:TYR:O	2:E:1797:ARG:NH2	2.53	0.42
1:A:98:TYR:CE1	1:A:102:ARG:HG3	2.54	0.42
2:D:2041:ASP:HB3	2:D:2045:TYR:CE1	2.55	0.42
2:E:1703:VAL:HG22	2:E:1939:VAL:HG12	2.01	0.42
2:F:1755:LEU:HG	2:F:1757:VAL:HG23	2.02	0.42
2:E:1751:LEU:HD13	2:E:1847:VAL:CG2	2.50	0.42

Continued on next page...

Continued from previous page...

Atom-1	Atom-2	Interatomic distance (Å)	Clash overlap (Å)
2:D:1749:LEU:HB2	2:D:1771:VAL:HG23	2.02	0.42
2:F:1991:LYS:HE2	2:F:2010:LEU:CD1	2.50	0.41
2:D:1599:VAL:HG22	2:D:2128:VAL:HA	2.02	0.41
1:A:86:SER:HA	1:A:87:PRO:HD3	1.88	0.41
1:B:164:GLY:O	1:B:168:VAL:HG23	2.20	0.41
2:D:1816:ILE:HD12	2:D:1816:ILE:O	2.20	0.41
2:F:1955:PHE:HZ	2:F:1981:LEU:HB3	1.84	0.41
2:D:1572:ALA:HB1	2:D:1576:PHE:CE1	2.55	0.41
2:F:2009:LEU:HA	2:F:2012:ILE:HD12	2.02	0.41
2:F:1751:LEU:HD13	2:F:1847:VAL:HG23	2.03	0.41
1:A:155:LEU:HB3	1:A:168:VAL:HG22	2.02	0.41
1:B:90:PHE:CE2	1:B:145:MET:HE3	2.55	0.41
2:F:1599:VAL:HG22	2:F:2128:VAL:HA	2.02	0.41
1:B:92:ASN:HA	1:B:95:ALA:HB3	2.03	0.41
2:D:1707:LEU:CD2	2:D:1989:ILE:HG22	2.50	0.41
2:F:1789:TYR:O	2:F:1797:ARG:NH2	2.54	0.41
2:D:1717:GLN:CG	2:D:1928:THR:HG21	2.49	0.41
1:A:87:PRO:HA	1:A:137:ILE:HD11	2.03	0.41
2:E:1799:ASP:OD2	2:E:1801:ARG:HB2	2.21	0.41
2:E:1723:VAL:HG22	2:E:1730:ALA:HB2	2.02	0.41
2:F:1723:VAL:HG22	2:F:1730:ALA:HB2	2.02	0.41
2:D:1853:LEU:HD12	2:D:1853:LEU:C	2.41	0.41
2:D:1596:ARG:HB3	2:D:1597:PRO:HD3	2.02	0.41
2:E:1683:VAL:HA	2:E:1686:LEU:HD12	2.01	0.41
2:D:1723:VAL:HG22	2:D:1730:ALA:HB2	2.02	0.41
2:E:1599:VAL:HG22	2:E:2128:VAL:HA	2.02	0.41
2:E:1751:LEU:HD13	2:E:1847:VAL:HG23	2.03	0.41
1:A:161:THR:CB	1:A:163:ARG:HG3	2.49	0.41
2:F:1749:LEU:HB2	2:F:1771:VAL:HG23	2.02	0.41
2:F:1769:VAL:HG21	2:F:1784:MET:HA	2.03	0.41
1:A:92:ASN:HA	1:A:95:ALA:HB3	2.03	0.41
2:D:1769:VAL:HG21	2:D:1784:MET:HA	2.02	0.41
2:E:1937:PHE:N	2:E:1937:PHE:CD1	2.88	0.41
1:C:87:PRO:HA	1:C:137:ILE:HD11	2.03	0.41
2:F:1808:ARG:HG2	2:F:1813:GLY:HA3	2.02	0.41
1:A:154:TYR:O	1:A:155:LEU:HD12	2.20	0.41
2:E:1842:PRO:HD2	2:E:1845:ALA:HB2	2.03	0.41
1:A:90:PHE:CE2	1:A:145:MET:CE	3.04	0.41
2:E:1717:GLN:CG	2:E:1928:THR:HG21	2.51	0.41
2:E:1596:ARG:HB3	2:E:1597:PRO:HD3	2.02	0.40
1:B:4:ILE:HD12	1:B:51:VAL:HG11	2.04	0.40

Continued on next page...

Continued from previous page...

Atom-1	Atom-2	Interatomic distance (Å)	Clash overlap (Å)
2:F:1683:VAL:HA	2:F:1686:LEU:HD12	2.02	0.40
2:D:1811:VAL:CG1	2:E:1919:LEU:HD21	2.51	0.40
1:B:25:THR:HG22	2:F:2036:LEU:HB2	2.02	0.40
2:D:1600:GLU:HA	2:D:1603:LEU:HD12	2.04	0.40
1:C:108:THR:HA	1:C:109:PRO:HD3	1.98	0.40
2:F:1738:ARG:HD2	2:F:2004:ASN:HA	2.03	0.40
1:B:19:LEU:CD1	1:B:165:LEU:CG	3.00	0.40
2:D:1684:GLU:HB3	2:D:1984:ARG:HH22	1.85	0.40
1:C:164:GLY:O	1:C:168:VAL:HG23	2.21	0.40
4:C:200:GNP:C8	4:C:200:GNP:H5'2	2.47	0.40
2:D:1755:LEU:HG	2:D:1757:VAL:HG23	2.04	0.40
1:B:161:THR:CB	1:B:163:ARG:HG3	2.49	0.40
2:F:1572:ALA:HB1	2:F:1576:PHE:CE1	2.57	0.40
1:C:4:ILE:HD12	1:C:51:VAL:HG11	2.03	0.40
2:F:1882:ARG:HA	2:F:1883:PRO:HD3	1.98	0.40
1:B:39:ASN:HB2	2:E:1812:ALA:HB3	2.04	0.40
2:F:1751:LEU:HD13	2:F:1847:VAL:CG2	2.51	0.40
2:F:1629:PHE:CE2	2:F:1634:ARG:HG2	2.56	0.40
1:A:108:THR:HA	1:A:109:PRO:HD3	1.99	0.40
2:F:1799:ASP:OD2	2:F:1801:ARG:HB2	2.21	0.40

There are no symmetry-related clashes.

5.3 Torsion angles [i](#)

5.3.1 Protein backbone [i](#)

In the following table, the Percentiles column shows the percent Ramachandran outliers of the chain as a percentile score with respect to all X-ray entries followed by that with respect to entries of similar resolution.

The Analysed column shows the number of residues for which the backbone conformation was analysed, and the total number of residues.

Mol	Chain	Analysed	Favoured	Allowed	Outliers	Percentiles	
1	A	176/184 (96%)	162 (92%)	14 (8%)	0	100	100
1	B	176/184 (96%)	163 (93%)	13 (7%)	0	100	100
1	C	176/184 (96%)	161 (92%)	15 (8%)	0	100	100
2	D	493/633 (78%)	430 (87%)	59 (12%)	4 (1%)	24	70

Continued on next page...

Continued from previous page...

Mol	Chain	Analysed	Favoured	Allowed	Outliers	Percentiles	
2	E	495/633 (78%)	431 (87%)	61 (12%)	3 (1%)	30	74
2	F	496/633 (78%)	430 (87%)	63 (13%)	3 (1%)	30	74
All	All	2012/2451 (82%)	1777 (88%)	225 (11%)	10 (0%)	34	77

All (10) Ramachandran outliers are listed below:

Mol	Chain	Res	Type
2	D	2039	ALA
2	E	1670	LYS
2	E	2039	ALA
2	F	2039	ALA
2	D	1670	LYS
2	D	1587	ARG
2	F	1670	LYS
2	D	1813	GLY
2	E	1813	GLY
2	F	1813	GLY

5.3.2 Protein sidechains ⓘ

In the following table, the Percentiles column shows the percent sidechain outliers of the chain as a percentile score with respect to all X-ray entries followed by that with respect to entries of similar resolution.

The Analysed column shows the number of residues for which the sidechain conformation was analysed, and the total number of residues.

Mol	Chain	Analysed	Rotameric	Outliers	Percentiles	
1	A	154/160 (96%)	154 (100%)	0	100	100
1	B	154/160 (96%)	152 (99%)	2 (1%)	76	89
1	C	154/160 (96%)	154 (100%)	0	100	100
2	D	448/563 (80%)	443 (99%)	5 (1%)	80	90
2	E	450/563 (80%)	443 (98%)	7 (2%)	70	88
2	F	450/563 (80%)	441 (98%)	9 (2%)	63	86
All	All	1810/2169 (83%)	1787 (99%)	23 (1%)	76	89

All (23) residues with a non-rotameric sidechain are listed below:

Mol	Chain	Res	Type
1	B	65	ASP
1	B	85	VAL
2	D	1790	LYS
2	D	1832	ARG
2	D	1984	ARG
2	D	2017	MET
2	D	2078	TYR
2	E	1790	LYS
2	E	1832	ARG
2	E	1881	ILE
2	E	1932	PHE
2	E	1984	ARG
2	E	2017	MET
2	E	2078	TYR
2	F	1736	ASP
2	F	1790	LYS
2	F	1832	ARG
2	F	1852	CYS
2	F	1914	ILE
2	F	1932	PHE
2	F	1984	ARG
2	F	2017	MET
2	F	2078	TYR

Some sidechains can be flipped to improve hydrogen bonding and reduce clashes. All (25) such sidechains are listed below:

Mol	Chain	Res	Type
1	B	39	ASN
1	C	39	ASN
2	D	1611	ASN
2	D	1671	ASN
2	D	1930	GLN
2	D	1961	GLN
2	D	1964	GLN
2	D	1992	ASN
2	D	2000	GLN
2	D	2068	ASN
2	D	2089	HIS
2	E	1611	ASN
2	E	1671	ASN
2	E	1930	GLN
2	E	1961	GLN
2	E	1992	ASN

Continued on next page...

Continued from previous page...

Mol	Chain	Res	Type
2	E	2000	GLN
2	E	2089	HIS
2	F	1611	ASN
2	F	1671	ASN
2	F	1930	GLN
2	F	1961	GLN
2	F	1979	ASN
2	F	1992	ASN
2	F	2000	GLN

5.3.3 RNA [i](#)

There are no RNA molecules in this entry.

5.4 Non-standard residues in protein, DNA, RNA chains [i](#)

There are no non-standard protein/DNA/RNA residues in this entry.

5.5 Carbohydrates [i](#)

There are no carbohydrates in this entry.

5.6 Ligand geometry [i](#)

Of 6 ligands modelled in this entry, 3 are monoatomic - leaving 3 for Mogul analysis.

In the following table, the Counts columns list the number of bonds (or angles) for which Mogul statistics could be retrieved, the number of bonds (or angles) that are observed in the model and the number of bonds (or angles) that are defined in the chemical component dictionary. The Link column lists molecule types, if any, to which the group is linked. The Z score for a bond length (or angle) is the number of standard deviations the observed value is removed from the expected value. A bond length (or angle) with $|Z| > 2$ is considered an outlier worth inspection. RMSZ is the root-mean-square of all Z scores of the bond lengths (or angles).

Mol	Type	Chain	Res	Link	Bond lengths			Bond angles		
					Counts	RMSZ	# $ Z > 2$	Counts	RMSZ	# $ Z > 2$
4	GNP	A	200	3	28,34,34	1.56	4 (14%)	33,54,54	2.21	16 (48%)
4	GNP	B	200	3	28,34,34	1.69	6 (21%)	33,54,54	2.31	14 (42%)
4	GNP	C	200	3	28,34,34	1.50	5 (17%)	33,54,54	2.25	16 (48%)

In the following table, the Chirals column lists the number of chiral outliers, the number of chiral centers analysed, the number of these observed in the model and the number defined in the chemical component dictionary. Similar counts are reported in the Torsion and Rings columns. '-' means no outliers of that kind were identified.

Mol	Type	Chain	Res	Link	Chirals	Torsions	Rings
4	GNP	A	200	3	-	1/12/38/38	0/3/3/3
4	GNP	B	200	3	-	1/12/38/38	0/3/3/3
4	GNP	C	200	3	-	1/12/38/38	0/3/3/3

All (15) bond length outliers are listed below:

Mol	Chain	Res	Type	Atoms	Z	Observed(Å)	Ideal(Å)
4	C	200	GNP	C6-C5	2.04	1.45	1.41
4	C	200	GNP	PB-N3B	2.05	1.68	1.63
4	A	200	GNP	C6-C5	2.08	1.45	1.41
4	A	200	GNP	C6-N1	2.09	1.37	1.33
4	B	200	GNP	C4-N3	2.13	1.39	1.35
4	C	200	GNP	C2-N2	2.22	1.38	1.34
4	B	200	GNP	C6-C5	2.24	1.45	1.41
4	C	200	GNP	C6-N1	2.26	1.37	1.33
4	A	200	GNP	PB-N3B	2.41	1.69	1.63
4	B	200	GNP	PB-O1B	2.44	1.48	1.46
4	B	200	GNP	PB-N3B	2.47	1.69	1.63
4	B	200	GNP	C6-N1	2.47	1.37	1.33
4	C	200	GNP	O4'-C1'	3.79	1.46	1.41
4	A	200	GNP	O4'-C1'	4.33	1.46	1.41
4	B	200	GNP	O4'-C1'	4.35	1.46	1.41

All (46) bond angle outliers are listed below:

Mol	Chain	Res	Type	Atoms	Z	Observed(°)	Ideal(°)
4	B	200	GNP	PA-O3A-PB	-6.31	111.50	132.67
4	C	200	GNP	PA-O3A-PB	-6.26	111.68	132.67
4	A	200	GNP	PA-O3A-PB	-6.11	112.18	132.67
4	C	200	GNP	N3-C2-N1	-4.42	120.71	127.44
4	B	200	GNP	N3-C2-N1	-4.14	121.13	127.44
4	A	200	GNP	N3-C2-N1	-4.03	121.31	127.44
4	B	200	GNP	C6-C5-C4	-3.84	116.30	120.90
4	B	200	GNP	O2B-PB-O1B	-3.82	102.04	110.00
4	C	200	GNP	O2B-PB-O1B	-3.67	102.33	110.00
4	A	200	GNP	O2B-PB-O1B	-3.65	102.39	110.00
4	A	200	GNP	C6-C5-C4	-3.55	116.65	120.90
4	B	200	GNP	C4'-O4'-C1'	-3.33	106.06	109.72

Continued on next page...

Continued from previous page...

Mol	Chain	Res	Type	Atoms	Z	Observed(°)	Ideal(°)
4	C	200	GNP	C6-C5-C4	-3.05	117.25	120.90
4	A	200	GNP	C4'-O4'-C1'	-2.71	106.74	109.72
4	C	200	GNP	C5-C6-N1	-2.40	120.31	123.59
4	C	200	GNP	C4-C5-N7	-2.37	107.30	109.48
4	B	200	GNP	O2G-PG-O1G	-2.23	107.56	113.49
4	A	200	GNP	C4-C5-N7	-2.19	107.46	109.48
4	C	200	GNP	C4'-O4'-C1'	-2.18	107.32	109.72
4	A	200	GNP	C5-C6-N1	-2.13	120.67	123.59
4	B	200	GNP	C5-C6-N1	-2.09	120.73	123.59
4	C	200	GNP	O2G-PG-O1G	-2.07	107.98	113.49
4	A	200	GNP	O2G-PG-O1G	-2.03	108.11	113.49
4	C	200	GNP	O3G-PG-O2G	2.01	113.53	107.58
4	A	200	GNP	C2'-C1'-N9	2.03	117.39	114.29
4	A	200	GNP	O3G-PG-O2G	2.04	113.63	107.58
4	B	200	GNP	C2'-C1'-N9	2.09	117.49	114.29
4	A	200	GNP	O1B-PB-N3B	2.10	115.12	111.90
4	A	200	GNP	O2B-PB-O3A	2.13	114.73	105.09
4	C	200	GNP	O2B-PB-O3A	2.14	114.78	105.09
4	B	200	GNP	O2B-PB-O3A	2.26	115.34	105.09
4	B	200	GNP	O1B-PB-N3B	2.26	115.36	111.90
4	C	200	GNP	O1B-PB-N3B	2.36	115.53	111.90
4	C	200	GNP	C2'-C1'-N9	2.38	117.92	114.29
4	A	200	GNP	O2A-PA-O3A	2.63	117.03	105.09
4	A	200	GNP	O4'-C1'-N9	2.73	113.82	108.10
4	C	200	GNP	O2A-PA-O3A	2.75	117.58	105.09
4	B	200	GNP	O2A-PA-O3A	2.75	117.58	105.09
4	A	200	GNP	C6-N1-C2	2.82	119.86	115.94
4	C	200	GNP	O3A-PA-O5'	2.85	110.49	102.94
4	C	200	GNP	O4'-C1'-N9	2.91	114.19	108.10
4	B	200	GNP	O4'-C1'-N9	2.96	114.29	108.10
4	C	200	GNP	C6-N1-C2	3.01	120.12	115.94
4	B	200	GNP	C6-N1-C2	3.03	120.14	115.94
4	B	200	GNP	O3A-PA-O5'	3.08	111.12	102.94
4	A	200	GNP	O3A-PA-O5'	3.14	111.25	102.94

There are no chirality outliers.

All (3) torsion outliers are listed below:

Mol	Chain	Res	Type	Atoms
4	B	200	GNP	O1G-PG-N3B-PB
4	C	200	GNP	O1G-PG-N3B-PB
4	A	200	GNP	O1G-PG-N3B-PB

There are no ring outliers.

3 monomers are involved in 9 short contacts:

Mol	Chain	Res	Type	Clashes	Symm-Clashes
4	A	200	GNP	3	0
4	B	200	GNP	3	0
4	C	200	GNP	3	0

5.7 Other polymers [i](#)

There are no such residues in this entry.

5.8 Polymer linkage issues [i](#)

There are no chain breaks in this entry.

6 Fit of model and data

6.1 Protein, DNA and RNA chains

In the following table, the column labelled ‘#RSRZ> 2’ contains the number (and percentage) of RSRZ outliers, followed by percent RSRZ outliers for the chain as percentile scores relative to all X-ray entries and entries of similar resolution. The OWAB column contains the minimum, median, 95th percentile and maximum values of the occupancy-weighted average B-factor per residue. The column labelled ‘Q< 0.9’ lists the number of (and percentage) of residues with an average occupancy less than 0.9.

Mol	Chain	Analysed	<RSRZ>	#RSRZ>2	OWAB(Å ²)	Q<0.9
1	A	178/184 (96%)	0.29	10 (5%) 28 21	41, 112, 244, 271	0
1	B	178/184 (96%)	0.31	6 (3%) 49 39	20, 92, 190, 252	0
1	C	178/184 (96%)	0.67	21 (11%) 6 6	46, 138, 250, 281	0
2	D	503/633 (79%)	0.23	30 (5%) 25 18	21, 90, 253, 287	0
2	E	505/633 (79%)	0.17	16 (3%) 51 40	21, 120, 266, 296	0
2	F	506/633 (79%)	0.24	30 (5%) 26 19	20, 101, 257, 281	0
All	All	2048/2451 (83%)	0.27	113 (5%) 29 22	20, 107, 255, 296	0

All (113) RSRZ outliers are listed below:

Mol	Chain	Res	Type	RSRZ
2	F	1722	PRO	5.5
2	E	1591	VAL	4.8
2	D	1733	THR	4.5
2	F	1961	GLN	4.5
2	F	1882	ARG	4.4
2	D	1967	ILE	4.4
2	F	1890	SER	4.4
2	D	2023	ALA	4.2
1	C	11	ASP	3.7
1	C	80	ILE	3.5
2	D	1962	ALA	3.5
2	D	1889	PRO	3.5
2	D	1624	GLU	3.5
2	D	1825	GLU	3.5
2	F	1883	PRO	3.5
1	C	85	VAL	3.5
1	B	2	GLN	3.4
1	C	159	ALA	3.4
2	F	1825	GLU	3.4

Continued on next page...

Continued from previous page...

Mol	Chain	Res	Type	RSRZ
2	F	1588	ASP	3.3
2	E	1590	GLY	3.3
2	D	1890	SER	3.3
1	C	154	TYR	3.3
2	E	1671	ASN	3.3
2	E	2023	ALA	3.3
2	F	2115	MET	3.2
1	C	178	LYS	3.2
2	D	1738	ARG	3.1
2	E	1885	HIS	3.1
2	F	1742	GLU	3.1
1	C	171	GLU	3.1
2	F	1671	ASN	3.1
2	D	1854	THR	3.1
2	F	1745	GLU	3.0
1	A	177	LEU	3.0
1	C	112	LEU	3.0
2	F	1959	ASP	3.0
2	F	1886	LEU	3.0
2	D	1880	GLY	3.0
2	F	1668	VAL	3.0
1	A	132	LYS	2.8
2	F	1887	VAL	2.8
2	F	1746	TYR	2.8
2	F	1589	LEU	2.8
1	B	47	ASP	2.8
2	D	1740	LEU	2.8
1	C	119	LEU	2.7
1	B	46	VAL	2.7
2	E	2062	ALA	2.7
1	A	159	ALA	2.7
2	D	2128	VAL	2.7
2	D	1972	THR	2.7
2	E	1742	GLU	2.7
1	C	12	GLY	2.6
2	F	1672	PRO	2.6
2	F	1968	SER	2.6
2	D	1886	LEU	2.6
2	D	1966	GLY	2.6
2	D	1729	LYS	2.6
2	F	1889	PRO	2.6
1	C	120	ARG	2.5

Continued on next page...

Continued from previous page...

Mol	Chain	Res	Type	RSRZ
2	D	1629	PHE	2.5
2	D	1965	HIS	2.5
1	C	149	ILE	2.5
2	F	1963	GLN	2.5
2	E	1757	VAL	2.4
2	D	2129	GLU	2.4
2	F	1723	VAL	2.4
2	D	1673	LYS	2.4
2	D	1628	THR	2.4
1	A	130	LYS	2.4
1	C	174	ARG	2.4
2	F	1744	VAL	2.4
2	F	1962	ALA	2.3
2	F	2062	ALA	2.3
1	B	4	ILE	2.3
2	D	1739	LEU	2.3
2	F	2004	ASN	2.3
2	D	1887	VAL	2.3
2	E	1886	LEU	2.3
1	C	156	GLU	2.3
2	F	1675	MET	2.3
2	E	1887	VAL	2.3
1	A	156	GLU	2.3
2	D	1963	GLN	2.2
2	F	1964	GLN	2.2
1	A	131	GLU	2.2
1	A	133	LYS	2.2
1	C	84	LEU	2.2
1	A	174	ARG	2.2
1	C	94	ARG	2.2
1	C	153	LYS	2.2
2	E	1722	PRO	2.2
1	C	139	TYR	2.1
2	D	1732	TYR	2.1
2	E	2082	LEU	2.1
2	D	1736	ASP	2.1
2	F	1667	TYR	2.1
2	D	1828	GLY	2.1
2	D	1852	CYS	2.1
2	F	1730	ALA	2.1
1	C	110	ILE	2.1
2	E	1592	PRO	2.1

Continued on next page...

Continued from previous page...

Mol	Chain	Res	Type	RSRZ
1	B	159	ALA	2.1
1	C	81	CYS	2.1
1	B	177	LEU	2.1
2	E	1589	LEU	2.1
1	A	123	LYS	2.1
1	C	115	THR	2.0
2	D	1882	ARG	2.0
2	E	1680	GLU	2.0
1	A	85	VAL	2.0
2	E	2040	ARG	2.0

6.2 Non-standard residues in protein, DNA, RNA chains [i](#)

There are no non-standard protein/DNA/RNA residues in this entry.

6.3 Carbohydrates [i](#)

There are no carbohydrates in this entry.

6.4 Ligands [i](#)

In the following table, the Atoms column lists the number of modelled atoms in the group and the number defined in the chemical component dictionary. LLDF column lists the quality of electron density of the group with respect to its neighbouring residues in protein, DNA or RNA chains. The B-factors column lists the minimum, median, 95th percentile and maximum values of B factors of atoms in the group. The column labelled 'Q< 0.9' lists the number of atoms with occupancy less than 0.9.

Mol	Type	Chain	Res	Atoms	RSCC	RSR	LLDF	B-factors(\AA^2)	Q<0.9
4	GNP	B	200	32/32	0.90	0.27	-0.58	47,62,77,79	0
4	GNP	A	200	32/32	0.88	0.26	-0.61	69,89,107,121	0
4	GNP	C	200	32/32	0.87	0.29	-0.77	99,127,142,151	0
3	MG	C	201	1/1	0.98	0.16	-0.89	57,57,57,57	0
3	MG	B	201	1/1	0.94	0.16	-1.65	19,19,19,19	0
3	MG	A	201	1/1	0.97	0.09	-2.04	38,38,38,38	0

6.5 Other polymers [i](#)

There are no such residues in this entry.