



# Full wwPDB X-ray Structure Validation Report ⓘ

Dec 21, 2016 – 02:04 PM EST

PDB ID : 5T07  
Title : Crystal structure of a putative acyl-CoA thioesterase EC709/ECK0725 from Escherichia coli in complex with Decanoyl-CoA  
Authors : Watanabe, N.; Stogios, P.J.; Skarina, T.; Di Leo, R.; Savchenko, A.; Anderson, W.F.; Center for Structural Genomics of Infectious Diseases (CSGID)  
Deposited on : 2016-08-15  
Resolution : 1.72 Å(reported)

This is a Full wwPDB X-ray Structure Validation Report for a publicly released PDB entry.

We welcome your comments at [validation@mail.wwpdb.org](mailto:validation@mail.wwpdb.org)

A user guide is available at

<http://wwpdb.org/validation/2016/XrayValidationReportHelp>

with specific help available everywhere you see the ⓘ symbol.

---

The following versions of software and data (see [references ⓘ](#)) were used in the production of this report:

MolProbity	:	4.02b-467
Mogul	:	1.7.1 (RC1), CSD as537be (2016)
Xtriage (Phenix)	:	1.9-1692
EDS	:	rb-20028442
Percentile statistics	:	20151230.v01 (using entries in the PDB archive December 30th 2015)
Refmac	:	5.8.0135
CCP4	:	6.5.0
Ideal geometry (proteins)	:	Engh & Huber (2001)
Ideal geometry (DNA, RNA)	:	Parkinson et al. (1996)
Validation Pipeline (wwPDB-VP)	:	rb-20028442

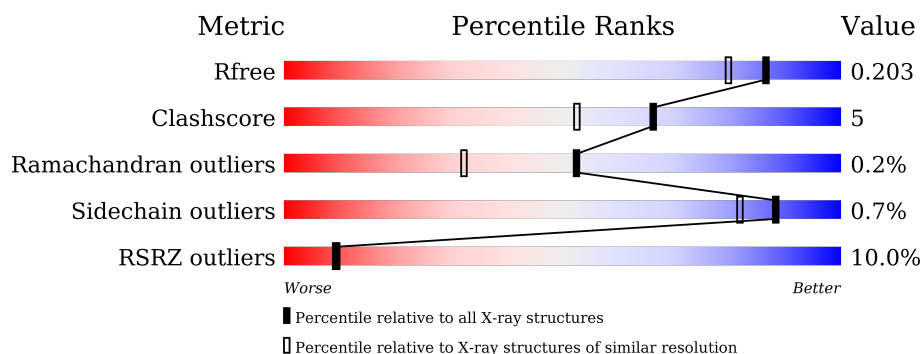
# 1 Overall quality at a glance

The following experimental techniques were used to determine the structure:

*X-RAY DIFFRACTION*

The reported resolution of this entry is 1.72 Å.

Percentile scores (ranging between 0-100) for global validation metrics of the entry are shown in the following graphic. The table shows the number of entries on which the scores are based.



Metric	Whole archive (#Entries)	Similar resolution (#Entries, resolution range(Å))
$R_{free}$	91344	3998 (1.74-1.70)
Clashscore	102246	4425 (1.74-1.70)
Ramachandran outliers	100387	4360 (1.74-1.70)
Sidechain outliers	100360	4360 (1.74-1.70)
RSRZ outliers	91569	4010 (1.74-1.70)

The table below summarises the geometric issues observed across the polymeric chains and their fit to the electron density. The red, orange, yellow and green segments on the lower bar indicate the fraction of residues that contain outliers for  $\geq 3$ , 2, 1 and 0 types of geometric quality criteria. A grey segment represents the fraction of residues that are not modelled. The numeric value for each fraction is indicated below the corresponding segment, with a dot representing fractions  $\leq 5\%$ . The upper red bar (where present) indicates the fraction of residues that have poor fit to the electron density. The numeric value is given above the bar.

Mol	Chain	Length	Quality of chain
1	A	134	<div> <div>3%</div> <div>84%</div> <div>14%</div> <div>.</div> </div>
1	B	134	<div> <div>7%</div> <div>87%</div> <div>10%</div> <div>.</div> </div>
1	C	134	<div> <div>10%</div> <div>90%</div> <div>6%</div> <div>.</div> </div>
1	D	134	<div> <div>19%</div> <div>87%</div> <div>10%</div> <div>.</div> </div>

## 2 Entry composition

There are 3 unique types of molecules in this entry. The entry contains 4932 atoms, of which 0 are hydrogens and 0 are deuteriums.

In the tables below, the ZeroOcc column contains the number of atoms modelled with zero occupancy, the AltConf column contains the number of residues with at least one atom in alternate conformation and the Trace column contains the number of residues modelled with at most 2 atoms.

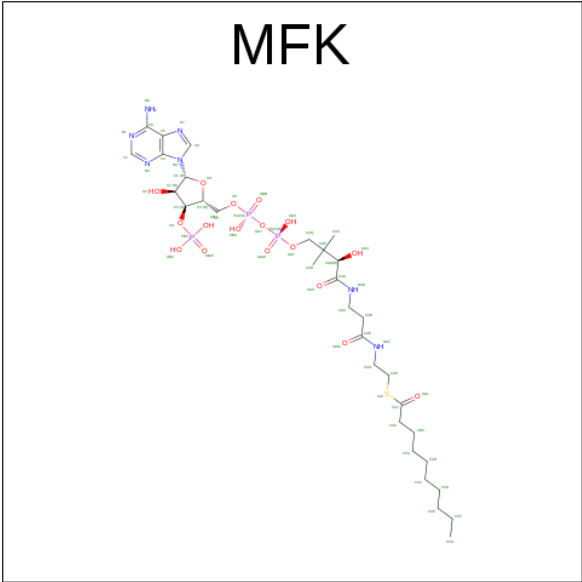
- Molecule 1 is a protein called Acyl-CoA thioester hydrolase YbgC.

Mol	Chain	Residues	Atoms					ZeroOcc	AltConf	Trace
1	A	131	Total	C	N	O	S	0	0	0
			1064	682	185	190	7			
1	B	130	Total	C	N	O	S	0	0	0
			1057	678	184	188	7			
1	C	129	Total	C	N	O	S	0	0	0
			1048	672	182	187	7			
1	D	130	Total	C	N	O	S	0	0	0
			1055	676	183	189	7			

There are 8 discrepancies between the modelled and reference sequences:

Chain	Residue	Modelled	Actual	Comment	Reference
A	1	VAL	-	expression tag	UNP P0A8Z5
A	18	ALA	ASP	engineered mutation	UNP P0A8Z5
B	1	VAL	-	expression tag	UNP P0A8Z5
B	18	ALA	ASP	engineered mutation	UNP P0A8Z5
C	1	VAL	-	expression tag	UNP P0A8Z5
C	18	ALA	ASP	engineered mutation	UNP P0A8Z5
D	1	VAL	-	expression tag	UNP P0A8Z5
D	18	ALA	ASP	engineered mutation	UNP P0A8Z5

- Molecule 2 is decanoyl-CoA (three-letter code: MFK) (formula: C<sub>31</sub>H<sub>54</sub>N<sub>7</sub>O<sub>17</sub>P<sub>3</sub>S).



Mol	Chain	Residues	Atoms						ZeroOcc	AltConf
2	A	1	Total	C	N	O	P	S	0	0
			59	31	7	17	3	1		
2	C	1	Total	C	N	O	P	S	0	0
			59	31	7	17	3	1		
2	D	1	Total	C	N	O	P	S	0	0
			59	31	7	17	3	1		

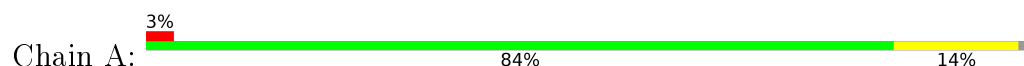
- Molecule 3 is water.

Mol	Chain	Residues	Atoms		ZeroOcc	AltConf
3	A	160	Total	O	0	0
			160	160		
3	B	131	Total	O	0	0
			131	131		
3	C	133	Total	O	0	0
			133	133		
3	D	107	Total	O	0	0
			107	107		

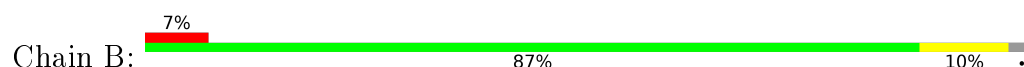
### 3 Residue-property plots [i](#)

These plots are drawn for all protein, RNA and DNA chains in the entry. The first graphic for a chain summarises the proportions of errors displayed in the second graphic. The second graphic shows the sequence view annotated by issues in geometry and electron density. Residues are color-coded according to the number of geometric quality criteria for which they contain at least one outlier: green = 0, yellow = 1, orange = 2 and red = 3 or more. A red dot above a residue indicates a poor fit to the electron density ( $RSRZ > 2$ ). Stretches of 2 or more consecutive residues without any outlier are shown as a green connector. Residues present in the sample, but not in the model, are shown in grey.

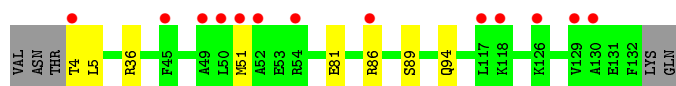
- Molecule 1: Acyl-CoA thioester hydrolase YbgC



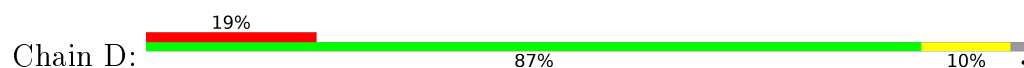
- Molecule 1: Acyl-CoA thioester hydrolase YbgC



- Molecule 1: Acyl-CoA thioester hydrolase YbgC



- Molecule 1: Acyl-CoA thioester hydrolase YbgC



## 4 Data and refinement statistics

Property	Value	Source
Space group	P 21 21 21	Depositor
Cell constants a, b, c, $\alpha$ , $\beta$ , $\gamma$	63.92Å 97.12Å 97.70Å 90.00° 90.00° 90.00°	Depositor
Resolution (Å)	29.02 – 1.72 29.02 – 1.72	Depositor EDS
% Data completeness (in resolution range)	99.7 (29.02-1.72) 99.8 (29.02-1.72)	Depositor EDS
$R_{merge}$	0.07	Depositor
$R_{sym}$	(Not available)	Depositor
$\langle I/\sigma(I) \rangle$ <sup>1</sup>	2.24 (at 1.72Å)	Xtriage
Refinement program	PHENIX	Depositor
R, $R_{free}$	0.171 , 0.203 0.171 , 0.203	Depositor DCC
$R_{free}$ test set	3378 reflections (5.16%)	DCC
Wilson B-factor (Å <sup>2</sup> )	24.4	Xtriage
Anisotropy	0.363	Xtriage
Bulk solvent $k_{sol}$ (e/Å <sup>3</sup> ), $B_{sol}$ (Å <sup>2</sup> )	0.33 , 57.8	EDS
L-test for twinning <sup>2</sup>	$\langle  L  \rangle = 0.49$ , $\langle L^2 \rangle = 0.33$	Xtriage
Estimated twinning fraction	0.015 for -h,l,k	Xtriage
$F_o, F_c$ correlation	0.97	EDS
Total number of atoms	4932	wwPDB-VP
Average B, all atoms (Å <sup>2</sup> )	34.0	wwPDB-VP

Xtriage's analysis on translational NCS is as follows: *The largest off-origin peak in the Patterson function is 5.20% of the height of the origin peak. No significant pseudotranslation is detected.*

<sup>1</sup>Intensities estimated from amplitudes.

<sup>2</sup>Theoretical values of  $\langle |L| \rangle$ ,  $\langle L^2 \rangle$  for acentric reflections are 0.5, 0.333 respectively for untwinned datasets, and 0.375, 0.2 for perfectly twinned datasets.

## 5 Model quality [i](#)

### 5.1 Standard geometry [i](#)

Bond lengths and bond angles in the following residue types are not validated in this section: MFK

The Z score for a bond length (or angle) is the number of standard deviations the observed value is removed from the expected value. A bond length (or angle) with  $|Z| > 5$  is considered an outlier worth inspection. RMSZ is the root-mean-square of all Z scores of the bond lengths (or angles).

Mol	Chain	Bond lengths		Bond angles	
		RMSZ	$\# Z  > 5$	RMSZ	$\# Z  > 5$
1	A	0.36	0/1087	0.58	0/1474
1	B	0.37	0/1080	0.63	1/1464 (0.1%)
1	C	0.32	0/1071	0.53	0/1453
1	D	0.34	0/1078	0.56	0/1463
All	All	0.35	0/4316	0.58	1/5854 (0.0%)

There are no bond length outliers.

All (1) bond angle outliers are listed below:

Mol	Chain	Res	Type	Atoms	Z	Observed(°)	Ideal(°)
1	B	117	LEU	CB-CG-CD2	-7.13	98.88	111.00

There are no chirality outliers.

There are no planarity outliers.

### 5.2 Too-close contacts [i](#)

In the following table, the Non-H and H(model) columns list the number of non-hydrogen atoms and hydrogen atoms in the chain respectively. The H(added) column lists the number of hydrogen atoms added and optimized by MolProbity. The Clashes column lists the number of clashes within the asymmetric unit, whereas Symm-Clashes lists symmetry related clashes.

Mol	Chain	Non-H	H(model)	H(added)	Clashes	Symm-Clashes
1	A	1064	0	1071	14	0
1	B	1057	0	1064	11	0
1	C	1048	0	1051	5	0
1	D	1055	0	1058	11	0
2	A	59	0	50	1	0
2	C	59	0	50	2	0

*Continued on next page...*

*Continued from previous page...*

Mol	Chain	Non-H	H(model)	H(added)	Clashes	Symm-Clashes
2	D	59	0	50	1	0
3	A	160	0	0	0	0
3	B	131	0	0	1	0
3	C	133	0	0	2	0
3	D	107	0	0	2	0
All	All	4932	0	4394	43	0

The all-atom clashscore is defined as the number of clashes found per 1000 atoms (including hydrogen atoms). The all-atom clashscore for this structure is 5.

All (43) close contacts within the same asymmetric unit are listed below, sorted by their clash magnitude.

Atom-1	Atom-2	Interatomic distance (Å)	Clash overlap (Å)
1:A:45:PHE:HE2	1:A:131:GLU:HG3	1.55	0.70
1:A:36:ARG:HH11	1:A:94:GLN:HE22	1.41	0.66
1:C:5:LEU:HD13	1:C:81:GLU:HG3	1.80	0.64
1:C:36:ARG:HH11	1:C:94:GLN:HE22	1.45	0.64
1:B:36:ARG:HH11	1:B:94:GLN:HE22	1.48	0.62
1:C:86:ARG:HG3	2:C:201:MFK:OBY	1.99	0.62
1:D:36:ARG:HH11	1:D:94:GLN:HE22	1.47	0.61
1:A:6:PHE:HB3	1:A:39:MET:HE3	1.83	0.61
1:D:3:THR:HG22	1:D:4:THR:N	2.17	0.59
1:A:5:LEU:HD11	1:A:79:GLN:HB3	1.85	0.58
1:B:55:VAL:HG12	1:B:122:ARG:HD3	1.87	0.57
1:A:6:PHE:HB3	1:A:39:MET:CE	2.36	0.55
1:A:45:PHE:CE2	1:A:131:GLU:HG3	2.40	0.54
2:C:201:MFK:OBA	3:C:301:HOH:O	2.19	0.54
1:D:62:MET:HG3	1:D:109:VAL:HG22	1.89	0.53
1:B:55:VAL:HG11	1:B:125:PRO:HG3	1.91	0.52
1:D:5:LEU:HD11	1:D:79:GLN:HB3	1.93	0.50
1:D:54:ARG:HH11	1:D:117:LEU:HD12	1.76	0.50
1:D:3:THR:HG22	1:D:4:THR:H	1.76	0.50
1:A:36:ARG:HH11	1:A:94:GLN:NE2	2.10	0.49
1:A:80:THR:HG23	1:A:94:GLN:HG2	1.93	0.49
1:B:95:ARG:NH1	3:B:203:HOH:O	2.45	0.49
1:B:39:MET:HE3	1:B:82:ILE:HG13	1.95	0.48
1:B:39:MET:HE2	1:B:92:PHE:HE2	1.78	0.48
1:A:25:HIS:HB3	2:A:201:MFK:H23	1.95	0.48
1:A:62:MET:HG3	1:A:109:VAL:HG22	1.96	0.46
1:A:8:TRP:CE2	1:A:38:GLU:HG3	2.51	0.46
1:D:54:ARG:HD2	1:D:117:LEU:HD12	1.98	0.45

*Continued on next page...*



Continued from previous page...

Atom-1	Atom-2	Interatomic distance (Å)	Clash overlap (Å)
1:A:90:LEU:HD11	1:A:124:LEU:CD2	2.46	0.45
1:B:39:MET:CE	1:B:82:ILE:HG13	2.47	0.44
1:C:86:ARG:HD2	1:C:89:SER:OG	2.18	0.44
1:D:36:ARG:HH11	1:D:94:GLN:NE2	2.13	0.43
1:D:3:THR:CG2	3:D:326:HOH:O	2.66	0.43
1:D:8:TRP:CE2	1:D:38:GLU:HG3	2.53	0.43
1:B:64:VAL:HG13	1:B:105:ASN:HD21	1.83	0.42
1:B:62:MET:HE2	1:B:109:VAL:HG22	2.02	0.41
2:D:201:MFK:OAX	3:D:301:HOH:O	2.21	0.41
1:B:62:MET:HE2	1:B:109:VAL:CG2	2.50	0.41
1:B:36:ARG:HH11	1:B:94:GLN:NE2	2.16	0.41
1:D:11:ARG:NE	1:D:75:MET:HE2	2.36	0.41
1:A:39:MET:HE3	1:A:80:THR:HB	2.01	0.41
1:A:90:LEU:CD1	1:A:124:LEU:HD21	2.51	0.41
1:C:4:THR:N	3:C:312:HOH:O	2.54	0.41

There are no symmetry-related clashes.

## 5.3 Torsion angles

### 5.3.1 Protein backbone

In the following table, the Percentiles column shows the percent Ramachandran outliers of the chain as a percentile score with respect to all X-ray entries followed by that with respect to entries of similar resolution.

The Analysed column shows the number of residues for which the backbone conformation was analysed, and the total number of residues.

Mol	Chain	Analysed	Favoured	Allowed	Outliers	Percentiles	
1	A	129/134 (96%)	126 (98%)	2 (2%)	1 (1%)	24	7
1	B	128/134 (96%)	125 (98%)	3 (2%)	0	100	100
1	C	127/134 (95%)	124 (98%)	3 (2%)	0	100	100
1	D	128/134 (96%)	124 (97%)	4 (3%)	0	100	100
All	All	512/536 (96%)	499 (98%)	12 (2%)	1 (0%)	52	32

All (1) Ramachandran outliers are listed below:

Mol	Chain	Res	Type
1	A	87	GLY

### 5.3.2 Protein sidechains ⓘ

In the following table, the Percentiles column shows the percent sidechain outliers of the chain as a percentile score with respect to all X-ray entries followed by that with respect to entries of similar resolution.

The Analysed column shows the number of residues for which the sidechain conformation was analysed, and the total number of residues.

Mol	Chain	Analysed	Rotameric	Outliers	Percentiles	
1	A	114/117 (97%)	112 (98%)	2 (2%)	66	48
1	B	113/117 (97%)	113 (100%)	0	100	100
1	C	112/117 (96%)	111 (99%)	1 (1%)	84	75
1	D	113/117 (97%)	113 (100%)	0	100	100
All	All	452/468 (97%)	449 (99%)	3 (1%)	88	82

All (3) residues with a non-rotameric sidechain are listed below:

Mol	Chain	Res	Type
1	A	73	ASP
1	A	84	SER
1	C	51	MET

Some sidechains can be flipped to improve hydrogen bonding and reduce clashes. All (5) such sidechains are listed below:

Mol	Chain	Res	Type
1	A	94	GLN
1	B	94	GLN
1	B	105	ASN
1	C	94	GLN
1	D	94	GLN

### 5.3.3 RNA ⓘ

There are no RNA molecules in this entry.

## 5.4 Non-standard residues in protein, DNA, RNA chains ⓘ

There are no non-standard protein/DNA/RNA residues in this entry.

## 5.5 Carbohydrates ⓘ

There are no carbohydrates in this entry.

## 5.6 Ligand geometry ⓘ

3 ligands are modelled in this entry.

In the following table, the Counts columns list the number of bonds (or angles) for which Mogul statistics could be retrieved, the number of bonds (or angles) that are observed in the model and the number of bonds (or angles) that are defined in the chemical component dictionary. The Link column lists molecule types, if any, to which the group is linked. The Z score for a bond length (or angle) is the number of standard deviations the observed value is removed from the expected value. A bond length (or angle) with  $|Z| > 2$  is considered an outlier worth inspection. RMSZ is the root-mean-square of all Z scores of the bond lengths (or angles).

Mol	Type	Chain	Res	Link	Bond lengths			Bond angles		
					Counts	RMSZ	# $ Z  > 2$	Counts	RMSZ	# $ Z  > 2$
2	MFK	A	201	-	52,61,61	1.46	7 (13%)	62,87,87	2.11	7 (11%)
2	MFK	C	201	-	52,61,61	1.54	7 (13%)	62,87,87	2.32	8 (12%)
2	MFK	D	201	-	52,61,61	1.41	8 (15%)	62,87,87	1.96	6 (9%)

In the following table, the Chirals column lists the number of chiral outliers, the number of chiral centers analysed, the number of these observed in the model and the number defined in the chemical component dictionary. Similar counts are reported in the Torsion and Rings columns. '-' means no outliers of that kind were identified.

Mol	Type	Chain	Res	Link	Chirals	Torsions	Rings
2	MFK	A	201	-	-	0/56/76/76	0/3/3/3
2	MFK	C	201	-	-	0/56/76/76	0/3/3/3
2	MFK	D	201	-	-	0/56/76/76	0/3/3/3

All (22) bond length outliers are listed below:

Mol	Chain	Res	Type	Atoms	Z	Observed(Å)	Ideal(Å)
2	C	201	MFK	C5-C4	-2.72	1.34	1.40
2	A	201	MFK	C5-C4	-2.70	1.34	1.40
2	D	201	MFK	C5-C4	-2.63	1.34	1.40
2	D	201	MFK	C2'-C1'	-2.02	1.50	1.53

*Continued on next page...*

*Continued from previous page...*

Mol	Chain	Res	Type	Atoms	Z	Observed(Å)	Ideal(Å)
2	D	201	MFK	O4'-C1'	2.09	1.44	1.41
2	D	201	MFK	PBV-OBV	2.13	1.62	1.54
2	A	201	MFK	PBV-OBV	2.15	1.62	1.54
2	A	201	MFK	O4'-C1'	2.43	1.44	1.41
2	C	201	MFK	O4'-C1'	2.66	1.45	1.41
2	C	201	MFK	CAK-CAJ	2.86	1.53	1.50
2	D	201	MFK	C2-N1	3.02	1.39	1.33
2	C	201	MFK	C2-N1	3.26	1.40	1.33
2	A	201	MFK	C2-N1	3.33	1.40	1.33
2	D	201	MFK	CAK-CAJ	3.47	1.53	1.50
2	A	201	MFK	PBV-OBW	3.59	1.62	1.50
2	C	201	MFK	PBV-OBW	3.70	1.62	1.50
2	D	201	MFK	PBV-OBW	3.76	1.62	1.50
2	A	201	MFK	CAK-CAJ	3.97	1.54	1.50
2	C	201	MFK	CAJ-SAI	4.31	1.83	1.76
2	D	201	MFK	C2-N3	4.44	1.40	1.32
2	C	201	MFK	C2-N3	4.59	1.40	1.32
2	A	201	MFK	C2-N3	4.63	1.40	1.32

All (21) bond angle outliers are listed below:

Mol	Chain	Res	Type	Atoms	Z	Observed(°)	Ideal(°)
2	C	201	MFK	N3-C2-N1	-13.33	118.40	128.87
2	A	201	MFK	N3-C2-N1	-13.29	118.43	128.87
2	D	201	MFK	N3-C2-N1	-12.29	119.21	128.87
2	C	201	MFK	OAL-CAJ-CAK	-7.70	118.64	123.94
2	A	201	MFK	OAL-CAJ-CAK	-5.08	120.44	123.94
2	D	201	MFK	OAL-CAJ-CAK	-4.59	120.78	123.94
2	C	201	MFK	CBZ-CAK-CAJ	-3.91	107.34	113.12
2	A	201	MFK	C4'-O4'-C1'	-3.66	105.76	109.64
2	D	201	MFK	C4'-O4'-C1'	-3.02	106.44	109.64
2	A	201	MFK	CBZ-CAK-CAJ	-2.93	108.79	113.12
2	C	201	MFK	C4'-O4'-C1'	-2.28	107.23	109.64
2	D	201	MFK	CBZ-CAK-CAJ	-2.06	110.07	113.12
2	A	201	MFK	N6-C6-N1	2.06	121.97	118.52
2	A	201	MFK	CAK-CAJ-SAI	2.09	115.23	113.36
2	D	201	MFK	CAK-CAJ-SAI	2.27	115.40	113.36
2	C	201	MFK	OBX-PBV-O3'	2.28	113.43	106.62
2	A	201	MFK	OBX-PBV-O3'	2.35	113.65	106.62
2	C	201	MFK	OAL-CAJ-SAI	2.48	124.80	122.83
2	D	201	MFK	C1'-N9-C4	2.73	129.85	126.81
2	C	201	MFK	CAK-CAJ-SAI	3.56	116.56	113.36

*Continued on next page...*

*Continued from previous page...*

Mol	Chain	Res	Type	Atoms	Z	Observed(°)	Ideal(°)
2	C	201	MFK	C1'-N9-C4	3.82	131.07	126.81

There are no chirality outliers.

There are no torsion outliers.

There are no ring outliers.

3 monomers are involved in 4 short contacts:

Mol	Chain	Res	Type	Clashes	Symm-Clashes
2	A	201	MFK	1	0
2	C	201	MFK	2	0
2	D	201	MFK	1	0

## 5.7 Other polymers [i](#)

There are no such residues in this entry.

## 5.8 Polymer linkage issues [i](#)

There are no chain breaks in this entry.

## 6 Fit of model and data

### 6.1 Protein, DNA and RNA chains

In the following table, the column labelled ‘#RSRZ> 2’ contains the number (and percentage) of RSRZ outliers, followed by percent RSRZ outliers for the chain as percentile scores relative to all X-ray entries and entries of similar resolution. The OWAB column contains the minimum, median, 95<sup>th</sup> percentile and maximum values of the occupancy-weighted average B-factor per residue. The column labelled ‘Q< 0.9’ lists the number of (and percentage) of residues with an average occupancy less than 0.9.

Mol	Chain	Analysed	<RSRZ>	#RSRZ>2	OWAB(Å <sup>2</sup> )	Q<0.9
1	A	131/134 (97%)	0.00	4 (3%) 52 57	17, 25, 46, 85	0
1	B	130/134 (97%)	0.13	10 (7%) 16 18	15, 26, 64, 94	0
1	C	129/134 (96%)	0.34	13 (10%) 9 9	21, 30, 56, 74	0
1	D	130/134 (97%)	0.72	25 (19%) 2 2	17, 29, 74, 86	0
All	All	520/536 (97%)	0.30	52 (10%) 9 9	15, 28, 65, 94	0

All (52) RSRZ outliers are listed below:

Mol	Chain	Res	Type	RSRZ
1	B	117	LEU	10.6
1	D	4	THR	6.9
1	D	117	LEU	6.5
1	D	130	ALA	6.4
1	B	4	THR	6.3
1	B	118	LYS	5.9
1	D	3	THR	5.1
1	D	129	VAL	5.1
1	D	118	LYS	5.1
1	A	4	THR	4.6
1	D	125	PRO	4.6
1	D	128	ILE	4.4
1	C	4	THR	4.3
1	C	49	ALA	4.2
1	B	115	ASP	4.2
1	D	54	ARG	3.9
1	D	123	ALA	3.7
1	D	49	ALA	3.7
1	D	119	MET	3.6
1	C	51	MET	3.5
1	A	3	THR	3.5

*Continued on next page...*

*Continued from previous page...*

Mol	Chain	Res	Type	RSRZ
1	B	54	ARG	3.4
1	B	119	MET	3.3
1	D	132	PHE	3.3
1	C	50	LEU	3.3
1	C	117	LEU	3.1
1	C	54	ARG	3.1
1	B	126	LYS	3.0
1	C	52	ALA	3.0
1	D	121	PRO	2.9
1	A	117	LEU	2.9
1	D	86	ARG	2.9
1	D	51	MET	2.8
1	A	14	TYR	2.7
1	D	120	LYS	2.7
1	D	116	PRO	2.7
1	C	86	ARG	2.6
1	C	129	VAL	2.6
1	D	45	PHE	2.6
1	C	45	PHE	2.5
1	D	52	ALA	2.5
1	B	133	LYS	2.5
1	C	130	ALA	2.4
1	D	115	ASP	2.4
1	B	116	PRO	2.4
1	C	126	LYS	2.4
1	D	87	GLY	2.3
1	D	55	VAL	2.2
1	D	124	LEU	2.1
1	D	5	LEU	2.0
1	B	120	LYS	2.0
1	C	118	LYS	2.0

## 6.2 Non-standard residues in protein, DNA, RNA chains ⓘ

There are no non-standard protein/DNA/RNA residues in this entry.

## 6.3 Carbohydrates ⓘ

There are no carbohydrates in this entry.

## 6.4 Ligands [i](#)

In the following table, the Atoms column lists the number of modelled atoms in the group and the number defined in the chemical component dictionary. LLDF column lists the quality of electron density of the group with respect to its neighbouring residues in protein, DNA or RNA chains. The B-factors column lists the minimum, median, 95<sup>th</sup> percentile and maximum values of B factors of atoms in the group. The column labelled 'Q< 0.9' lists the number of atoms with occupancy less than 0.9.

Mol	Type	Chain	Res	Atoms	RSCC	RSR	LLDF	B-factors(Å <sup>2</sup> )	Q<0.9
2	MFK	C	201	59/59	0.86	0.18	1.60	22,53,82,87	0
2	MFK	A	201	59/59	0.84	0.20	1.16	28,53,103,106	0
2	MFK	D	201	59/59	0.91	0.13	1.06	19,37,77,81	0

## 6.5 Other polymers [i](#)

There are no such residues in this entry.