



Full wwPDB X-ray Structure Validation Report ⓘ

Jan 23, 2017 – 01:17 PM EST

PDB ID : 5TM9
Title : Crystal Structure of the ER-alpha Ligand-binding Domain (Y537S) in Complex with the OBHS-ASC Analog, (E)-3-(4-((1R,4S,6R)-6-((3-chlorophenoxy)sulfonyl)-3-(4-hydroxyphenyl)-7-oxabicyclo[2.2.1]hept-2-en-2-yl)phenyl)acrylic acid
Authors : Nwachukwu, J.C.; Srinivasan, S.; Bruno, N.E.; Nowak, J.; Kojetin, D.J.; Elemento, O.; Katzenellenbogen, J.A.; Nettles, K.W.
Deposited on : 2016-10-12
Resolution : 2.50 Å(reported)

This is a Full wwPDB X-ray Structure Validation Report for a publicly released PDB entry.

We welcome your comments at validation@mail.wwpdb.org

A user guide is available at

<http://wwpdb.org/validation/2016/XrayValidationReportHelp>

with specific help available everywhere you see the ⓘ symbol.

The following versions of software and data (see [references ⓘ](#)) were used in the production of this report:

MolProbity	:	4.02b-467
Mogul	:	1.7.1 (RC1), CSD as537be (2016)
Xtriage (Phenix)	:	1.9-1692
EDS	:	rb-20028442
Percentile statistics	:	20151230.v01 (using entries in the PDB archive December 30th 2015)
Refmac	:	5.8.0135
CCP4	:	6.5.0
Ideal geometry (proteins)	:	Engh & Huber (2001)
Ideal geometry (DNA, RNA)	:	Parkinson et al. (1996)
Validation Pipeline (wwPDB-VP)	:	rb-20028442

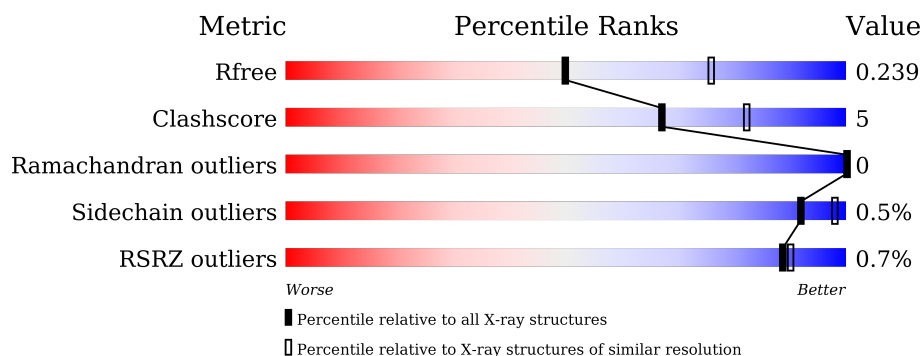
1 Overall quality at a glance

The following experimental techniques were used to determine the structure:

X-RAY DIFFRACTION

The reported resolution of this entry is 2.50 Å.

Percentile scores (ranging between 0-100) for global validation metrics of the entry are shown in the following graphic. The table shows the number of entries on which the scores are based.



Metric	Whole archive (#Entries)	Similar resolution (#Entries, resolution range(Å))
R_{free}	91344	3553 (2.50-2.50)
Clashscore	102246	4242 (2.50-2.50)
Ramachandran outliers	100387	4156 (2.50-2.50)
Sidechain outliers	100360	4158 (2.50-2.50)
RSRZ outliers	91569	3562 (2.50-2.50)

The table below summarises the geometric issues observed across the polymeric chains and their fit to the electron density. The red, orange, yellow and green segments on the lower bar indicate the fraction of residues that contain outliers for ≥ 3 , 2, 1 and 0 types of geometric quality criteria. A grey segment represents the fraction of residues that are not modelled. The numeric value for each fraction is indicated below the corresponding segment, with a dot representing fractions $\leq 5\%$. The upper red bar (where present) indicates the fraction of residues that have poor fit to the electron density. The numeric value is given above the bar.

Mol	Chain	Length	Quality of chain
1	A	257	<div> <div>77%</div> <div>6%</div> <div>16%</div> </div>
1	B	257	<div> <div>71%</div> <div>11%</div> <div>18%</div> </div>
2	C	13	<div> <div>8%</div> <div>54%</div> <div>15%</div> <div>31%</div> </div>
2	D	13	<div> <div>31%</div> <div>23%</div> <div>46%</div> </div>

2 Entry composition

There are 4 unique types of molecules in this entry. The entry contains 3725 atoms, of which 0 are hydrogens and 0 are deuteriums.

In the tables below, the ZeroOcc column contains the number of atoms modelled with zero occupancy, the AltConf column contains the number of residues with at least one atom in alternate conformation and the Trace column contains the number of residues modelled with at most 2 atoms.

- Molecule 1 is a protein called Estrogen receptor.

Mol	Chain	Residues	Atoms					ZeroOcc	AltConf	Trace
1	A	215	Total	C	N	O	S	0	1	0
			1689	1080	289	304	16			
1	B	211	Total	C	N	O	S	0	1	0
			1646	1052	287	290	17			

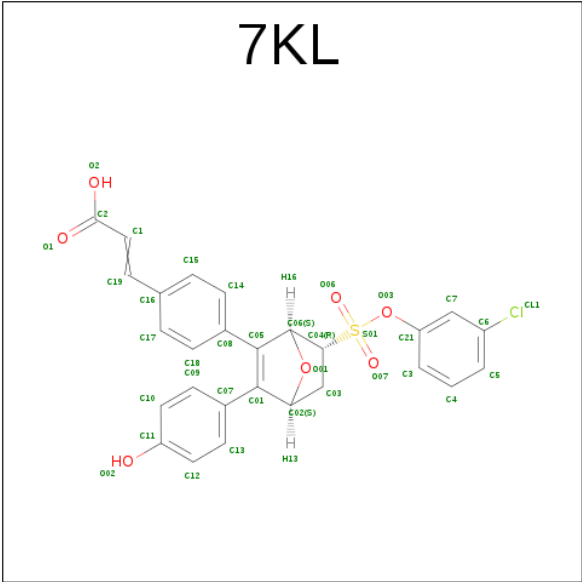
There are 2 discrepancies between the modelled and reference sequences:

Chain	Residue	Modelled	Actual	Comment	Reference
A	537	SER	TYR	engineered mutation	UNP P03372
B	537	SER	TYR	engineered mutation	UNP P03372

- Molecule 2 is a protein called Nuclear receptor coactivator 2.

Mol	Chain	Residues	Atoms				ZeroOcc	AltConf	Trace
2	C	9	Total	C	N	O	0	0	0
			66	42	12	12			
2	D	7	Total	C	N	O	0	0	0
			49	33	9	7			

- Molecule 3 is 3-{4-[(1S,4S,6R)-6-[(3-chlorophenoxy)sulfonyl]-3-(4-hydroxyphenyl)-7-oxabicyclo[2.2.1]hept-2-en-2-yl]phenyl}prop-2-enoic acid (three-letter code: 7KL) (formula: C₂₇H₂₁ClO₇S).



Mol	Chain	Residues	Atoms				ZeroOcc	AltConf
3	A	1	Total	C	O	S	0	0
			26	20	5	1		
3	A	1	Total	C	Cl	O	0	0
			32	25	1	5		
3	A	1	Total	C	Cl	O	0	1
			32	25	1	5		
3	A	1	Total	C	Cl	O	0	1
			32	25	1	5		
3	B	1	Total	C	Cl	O	0	0
			32	25	1	5		

- Molecule 4 is water.

Mol	Chain	Residues	Atoms		ZeroOcc	AltConf
4	A	59	Total	O	0	0
			59	59		
4	B	62	Total	O	0	0
			62	62		

4 Data and refinement statistics

Property	Value	Source
Space group	P 1 21 1	Depositor
Cell constants a, b, c, α , β , γ	58.88Å 81.98Å 61.80Å 90.00° 116.17° 90.00°	Depositor
Resolution (Å)	45.94 – 2.50 45.94 – 2.50	Depositor EDS
% Data completeness (in resolution range)	93.8 (45.94-2.50) 93.4 (45.94-2.50)	Depositor EDS
R_{merge}	0.08	Depositor
R_{sym}	(Not available)	Depositor
$\langle I/\sigma(I) \rangle$ ¹	2.23 (at 2.51Å)	Xtriage
Refinement program	PHENIX	Depositor
R, R_{free}	0.196 , 0.237 0.200 , 0.239	Depositor DCC
R_{free} test set	1713 reflections (11.10%)	DCC
Wilson B-factor (Å ²)	39.9	Xtriage
Anisotropy	0.485	Xtriage
Bulk solvent k_{sol} (e/Å ³), B_{sol} (Å ²)	0.29 , 47.6	EDS
L-test for twinning ²	$\langle L \rangle = 0.50$, $\langle L^2 \rangle = 0.33$	Xtriage
Estimated twinning fraction	0.036 for h,-k,-h-l	Xtriage
F_o, F_c correlation	0.94	EDS
Total number of atoms	3725	wwPDB-VP
Average B, all atoms (Å ²)	53.0	wwPDB-VP

Xtriage's analysis on translational NCS is as follows: *The largest off-origin peak in the Patterson function is 6.44% of the height of the origin peak. No significant pseudotranslation is detected.*

¹Intensities estimated from amplitudes.

²Theoretical values of $\langle |L| \rangle$, $\langle L^2 \rangle$ for acentric reflections are 0.5, 0.333 respectively for untwinned datasets, and 0.375, 0.2 for perfectly twinned datasets.

5 Model quality

5.1 Standard geometry

Bond lengths and bond angles in the following residue types are not validated in this section: 7KL

The Z score for a bond length (or angle) is the number of standard deviations the observed value is removed from the expected value. A bond length (or angle) with $|Z| > 5$ is considered an outlier worth inspection. RMSZ is the root-mean-square of all Z scores of the bond lengths (or angles).

Mol	Chain	Bond lengths		Bond angles	
		RMSZ	$\# Z > 5$	RMSZ	$\# Z > 5$
1	A	0.35	0/1720	0.40	0/2328
1	B	0.28	0/1674	0.38	0/2261
2	C	0.19	0/66	0.33	0/89
2	D	0.18	0/49	0.29	0/66
All	All	0.31	0/3509	0.39	0/4744

There are no bond length outliers.

There are no bond angle outliers.

There are no chirality outliers.

There are no planarity outliers.

5.2 Too-close contacts

In the following table, the Non-H and H(model) columns list the number of non-hydrogen atoms and hydrogen atoms in the chain respectively. The H(added) column lists the number of hydrogen atoms added and optimized by MolProbity. The Clashes column lists the number of clashes within the asymmetric unit, whereas Symm-Clashes lists symmetry related clashes.

Mol	Chain	Non-H	H(model)	H(added)	Clashes	Symm-Clashes
1	A	1689	0	1697	13	0
1	B	1646	0	1665	18	0
2	C	66	0	57	2	0
2	D	49	0	45	3	0
3	A	122	0	0	4	0
3	B	32	0	0	1	0
4	A	59	0	0	0	0
4	B	62	0	0	0	0
All	All	3725	0	3464	34	0

The all-atom clashscore is defined as the number of clashes found per 1000 atoms (including hydrogen atoms). The all-atom clashscore for this structure is 5.

All (34) close contacts within the same asymmetric unit are listed below, sorted by their clash magnitude.

Atom-1	Atom-2	Interatomic distance (Å)	Clash overlap (Å)
3:A:602:7KL:C09	3:A:602:7KL:C14	2.30	1.08
1:A:519:ASN:HD22	1:B:519:ASN:HD22	1.21	0.85
1:B:376:VAL:HG13	2:D:690:LEU:HD23	1.72	0.71
1:B:403:LEU:HD12	1:B:409:LEU:HD13	1.79	0.65
1:A:497:LEU:O	1:A:501:HIS:ND1	2.30	0.64
1:A:370:LEU:N	1:A:370:LEU:HD12	2.17	0.59
1:B:498:GLN:HA	1:B:501[B]:HIS:CE1	2.39	0.57
1:A:366:GLY:O	1:A:370:LEU:CD1	2.54	0.56
1:B:338:SER:HB2	1:B:341:SER:H	1.71	0.56
1:B:456:SER:HA	1:B:515:ARG:NH2	2.22	0.55
1:A:456:SER:HA	1:A:515:ARG:NH2	2.23	0.53
1:B:353:GLU:OE1	3:B:601:7KL:O02	2.27	0.52
1:B:421:MET:O	1:B:425:PHE:HB2	2.10	0.51
1:A:370:LEU:N	1:A:370:LEU:CD1	2.75	0.50
1:A:316:VAL:HG21	1:A:489:LEU:HD21	1.93	0.50
1:B:362:LYS:HE3	2:D:694:LEU:HA	1.97	0.47
1:A:366:GLY:O	1:A:370:LEU:HD13	2.16	0.45
1:B:516:HIS:O	1:B:520:LYS:HG2	2.17	0.45
1:A:376:VAL:HG13	2:C:690:LEU:HD23	1.99	0.44
1:B:382:ALA:HB2	1:B:456:SER:HB2	1.99	0.44
1:B:412:ARG:NH1	1:B:426:ASP:OD2	2.51	0.44
1:B:376:VAL:HG21	2:D:691:HIS:CE1	2.53	0.43
1:A:372:LEU:CD1	2:C:691:HIS:CD2	3.01	0.43
1:A:339:GLU:HG3	1:A:418:VAL:HG22	2.00	0.42
3:A:603[A]:7KL:C3	3:A:603[A]:7KL:C04	2.98	0.41
3:A:604[B]:7KL:CL1	3:A:604[B]:7KL:C15	3.06	0.41
1:A:421:MET:HG2	1:A:425:PHE:CD1	2.55	0.41
1:B:497:LEU:O	1:B:501[A]:HIS:ND1	2.53	0.41
1:A:322:ALA:O	1:A:360:TRP:HD1	2.04	0.41
1:B:321:ASP:OD2	1:B:363:ARG:NH2	2.54	0.41
1:B:413:ASN:HA	1:B:416:LYS:HD2	2.03	0.40
3:A:602:7KL:C3	3:A:602:7KL:O07	2.69	0.40
1:B:377:HIS:NE2	1:B:460:THR:HG23	2.36	0.40
1:B:458:VAL:HG13	1:B:459:TYR:CD1	2.56	0.40

There are no symmetry-related clashes.

5.3 Torsion angles

5.3.1 Protein backbone

In the following table, the Percentiles column shows the percent Ramachandran outliers of the chain as a percentile score with respect to all X-ray entries followed by that with respect to entries of similar resolution.

The Analysed column shows the number of residues for which the backbone conformation was analysed, and the total number of residues.

Mol	Chain	Analysed	Favoured	Allowed	Outliers	Percentiles	
1	A	212/257 (82%)	210 (99%)	2 (1%)	0	100	100
1	B	206/257 (80%)	204 (99%)	2 (1%)	0	100	100
2	C	7/13 (54%)	7 (100%)	0	0	100	100
2	D	5/13 (38%)	5 (100%)	0	0	100	100
All	All	430/540 (80%)	426 (99%)	4 (1%)	0	100	100

There are no Ramachandran outliers to report.

5.3.2 Protein sidechains

In the following table, the Percentiles column shows the percent sidechain outliers of the chain as a percentile score with respect to all X-ray entries followed by that with respect to entries of similar resolution.

The Analysed column shows the number of residues for which the sidechain conformation was analysed, and the total number of residues.

Mol	Chain	Analysed	Rotameric	Outliers	Percentiles	
1	A	185/232 (80%)	184 (100%)	1 (0%)	92	98
1	B	179/232 (77%)	178 (99%)	1 (1%)	90	97
2	C	6/13 (46%)	6 (100%)	0	100	100
2	D	4/13 (31%)	4 (100%)	0	100	100
All	All	374/490 (76%)	372 (100%)	2 (0%)	92	98

All (2) residues with a non-rotameric sidechain are listed below:

Mol	Chain	Res	Type
1	A	372	LEU
1	B	425	PHE

Some sidechains can be flipped to improve hydrogen bonding and reduce clashes. All (3) such sidechains are listed below:

Mol	Chain	Res	Type
1	A	359	ASN
1	B	519	ASN
2	C	691	HIS

5.3.3 RNA [i](#)

There are no RNA molecules in this entry.

5.4 Non-standard residues in protein, DNA, RNA chains [i](#)

There are no non-standard protein/DNA/RNA residues in this entry.

5.5 Carbohydrates [i](#)

There are no carbohydrates in this entry.

5.6 Ligand geometry [i](#)

5 ligands are modelled in this entry.

In the following table, the Counts columns list the number of bonds (or angles) for which Mogul statistics could be retrieved, the number of bonds (or angles) that are observed in the model and the number of bonds (or angles) that are defined in the chemical component dictionary. The Link column lists molecule types, if any, to which the group is linked. The Z score for a bond length (or angle) is the number of standard deviations the observed value is removed from the expected value. A bond length (or angle) with $|Z| > 2$ is considered an outlier worth inspection. RMSZ is the root-mean-square of all Z scores of the bond lengths (or angles).

Mol	Type	Chain	Res	Link	Bond lengths			Bond angles		
					Counts	RMSZ	$\# Z > 2$	Counts	RMSZ	$\# Z > 2$
3	7KL	A	601	-	26,29,40	3.44	10 (38%)	27,44,59	1.77	4 (14%)
3	7KL	A	602	-	33,36,40	3.37	9 (27%)	37,54,59	1.96	6 (16%)
3	7KL	A	603[A]	-	33,36,40	4.00	11 (33%)	37,54,59	1.84	4 (10%)
3	7KL	A	604[B]	-	33,36,40	3.80	11 (33%)	37,54,59	1.85	5 (13%)
3	7KL	B	601	-	33,36,40	3.27	8 (24%)	37,54,59	1.27	5 (13%)

In the following table, the Chirals column lists the number of chiral outliers, the number of chiral centers analysed, the number of these observed in the model and the number defined in the chemical

component dictionary. Similar counts are reported in the Torsion and Rings columns. '-' means no outliers of that kind were identified.

Mol	Type	Chain	Res	Link	Chirals	Torsions	Rings
3	7KL	A	601	-	-	0/15/41/48	0/2/4/5
3	7KL	A	602	-	-	0/17/43/48	0/3/5/5
3	7KL	A	603[A]	-	-	0/17/43/48	0/3/5/5
3	7KL	A	604[B]	-	-	0/17/43/48	0/3/5/5
3	7KL	B	601	-	-	0/17/43/48	0/3/5/5

All (49) bond length outliers are listed below:

Mol	Chain	Res	Type	Atoms	Z	Observed(Å)	Ideal(Å)
3	A	603[A]	7KL	C6-CL1	-12.07	1.47	1.74
3	B	601	7KL	C06-C05	-10.33	1.37	1.51
3	A	604[B]	7KL	C6-CL1	-9.90	1.52	1.74
3	A	601	7KL	C06-C05	-9.63	1.38	1.51
3	A	603[A]	7KL	C06-C05	-9.60	1.38	1.51
3	A	604[B]	7KL	C06-C05	-9.59	1.38	1.51
3	A	602	7KL	C06-C05	-9.15	1.39	1.51
3	A	604[B]	7KL	O03-S01	-8.48	1.46	1.60
3	A	603[A]	7KL	O03-S01	-8.45	1.46	1.60
3	A	603[A]	7KL	C07-C01	-7.88	1.31	1.48
3	A	604[B]	7KL	C07-C01	-7.83	1.32	1.48
3	A	602	7KL	C07-C01	-7.81	1.32	1.48
3	A	603[A]	7KL	C08-C05	-7.67	1.32	1.48
3	A	604[B]	7KL	C08-C05	-7.63	1.32	1.48
3	A	602	7KL	C08-C05	-7.60	1.32	1.48
3	A	601	7KL	C07-C01	-7.56	1.32	1.48
3	A	601	7KL	C08-C05	-7.41	1.32	1.48
3	B	601	7KL	C08-C05	-7.20	1.33	1.48
3	A	602	7KL	C6-CL1	-6.97	1.58	1.74
3	B	601	7KL	C07-C01	-6.85	1.34	1.48
3	A	602	7KL	O03-S01	-6.38	1.50	1.60
3	A	603[A]	7KL	O03-C21	-5.91	1.33	1.42
3	A	604[B]	7KL	O03-C21	-5.81	1.33	1.42
3	A	601	7KL	O03-S01	-5.09	1.49	1.57
3	A	602	7KL	O03-C21	-4.42	1.35	1.42
3	A	601	7KL	O01-C06	-4.16	1.38	1.43
3	B	601	7KL	O03-S01	-3.77	1.54	1.60
3	A	603[A]	7KL	O01-C06	-3.69	1.38	1.43
3	A	604[B]	7KL	C19-C16	-3.67	1.37	1.51
3	A	603[A]	7KL	C19-C16	-3.67	1.37	1.51
3	A	604[B]	7KL	O01-C06	-3.65	1.38	1.43
3	B	601	7KL	O03-C21	-3.55	1.37	1.42

Continued on next page...

Continued from previous page...

Mol	Chain	Res	Type	Atoms	Z	Observed(Å)	Ideal(Å)
3	A	602	7KL	C19-C16	-3.50	1.37	1.51
3	A	601	7KL	C19-C16	-3.34	1.38	1.51
3	B	601	7KL	C19-C16	-3.07	1.39	1.51
3	A	603[A]	7KL	O01-C02	-2.86	1.37	1.44
3	A	604[B]	7KL	O01-C02	-2.85	1.37	1.44
3	A	601	7KL	O01-C02	-2.83	1.37	1.44
3	A	601	7KL	O02-C11	-2.03	1.32	1.37
3	A	604[B]	7KL	O07-S01	2.42	1.46	1.43
3	A	603[A]	7KL	O07-S01	2.42	1.46	1.43
3	A	604[B]	7KL	O06-S01	2.83	1.47	1.43
3	A	603[A]	7KL	O06-S01	2.85	1.47	1.43
3	A	601	7KL	O06-S01	3.07	1.47	1.43
3	A	601	7KL	O07-S01	3.32	1.47	1.43
3	A	602	7KL	O06-S01	3.98	1.48	1.43
3	A	602	7KL	O07-S01	4.74	1.49	1.43
3	B	601	7KL	O07-S01	7.17	1.53	1.43
3	B	601	7KL	O06-S01	7.39	1.53	1.43

All (24) bond angle outliers are listed below:

Mol	Chain	Res	Type	Atoms	Z	Observed(°)	Ideal(°)
3	A	602	7KL	O01-C02-C03	-6.58	93.98	105.26
3	A	601	7KL	O01-C02-C03	-6.12	94.77	105.26
3	A	603[A]	7KL	O01-C02-C03	-6.03	94.93	105.26
3	A	604[B]	7KL	O01-C02-C03	-5.99	95.01	105.26
3	A	602	7KL	O07-S01-O06	-4.35	106.55	118.02
3	A	603[A]	7KL	O07-S01-O06	-4.15	107.06	118.02
3	A	604[B]	7KL	O07-S01-O06	-4.11	107.17	118.02
3	B	601	7KL	O01-C02-C03	-3.22	99.75	105.26
3	A	601	7KL	O07-S01-O06	-3.05	109.97	118.02
3	A	602	7KL	C09-C07-C01	-2.90	117.06	120.89
3	B	601	7KL	O07-S01-O06	-2.75	110.78	118.02
3	A	601	7KL	C09-C07-C01	-2.55	117.52	120.89
3	A	604[B]	7KL	C09-C07-C01	-2.52	117.57	120.89
3	A	603[A]	7KL	C09-C07-C01	-2.45	117.66	120.89
3	A	601	7KL	C18-C17-C16	-2.37	118.07	121.36
3	B	601	7KL	C09-C07-C01	-2.26	117.91	120.89
3	A	604[B]	7KL	C7-C6-CL1	-2.24	116.15	119.13
3	A	602	7KL	C18-C17-C16	-2.21	118.28	121.36
3	B	601	7KL	C21-C7-C6	2.01	120.58	118.12
3	B	601	7KL	O03-S01-C04	3.05	106.35	98.74
3	A	602	7KL	C03-C04-S01	4.10	121.26	112.33

Continued on next page...

Continued from previous page...

Mol	Chain	Res	Type	Atoms	Z	Observed(°)	Ideal(°)
3	A	602	7KL	O03-S01-C04	4.89	110.94	98.74
3	A	604[B]	7KL	O03-S01-C04	5.23	111.80	98.74
3	A	603[A]	7KL	O03-S01-C04	5.34	112.07	98.74

There are no chirality outliers.

There are no torsion outliers.

There are no ring outliers.

4 monomers are involved in 5 short contacts:

Mol	Chain	Res	Type	Clashes	Symm-Clashes
3	A	602	7KL	2	0
3	A	603[A]	7KL	1	0
3	A	604[B]	7KL	1	0
3	B	601	7KL	1	0

5.7 Other polymers [i](#)

There are no such residues in this entry.

5.8 Polymer linkage issues [i](#)

There are no chain breaks in this entry.

6 Fit of model and data [i](#)

6.1 Protein, DNA and RNA chains [i](#)

In the following table, the column labelled ‘#RSRZ> 2’ contains the number (and percentage) of RSRZ outliers, followed by percent RSRZ outliers for the chain as percentile scores relative to all X-ray entries and entries of similar resolution. The OWAB column contains the minimum, median, 95th percentile and maximum values of the occupancy-weighted average B-factor per residue. The column labelled ‘Q< 0.9’ lists the number of (and percentage) of residues with an average occupancy less than 0.9.

Mol	Chain	Analysed	<RSRZ>	#RSRZ>2	OWAB(Å ²)	Q<0.9
1	A	215/257 (83%)	-0.38	0 100 100	28, 50, 81, 112	1 (0%)
1	B	211/257 (82%)	-0.29	2 (0%) 85 88	27, 47, 95, 126	0
2	C	9/13 (69%)	0.36	1 (11%) 7 7	74, 91, 93, 108	0
2	D	7/13 (53%)	0.75	0 100 100	79, 88, 107, 114	0
All	All	442/540 (81%)	-0.30	3 (0%) 89 90	27, 49, 92, 126	1 (0%)

All (3) RSRZ outliers are listed below:

Mol	Chain	Res	Type	RSRZ
1	B	372	LEU	2.1
2	C	694	LEU	2.1
1	B	337	PHE	2.0

6.2 Non-standard residues in protein, DNA, RNA chains [i](#)

There are no non-standard protein/DNA/RNA residues in this entry.

6.3 Carbohydrates [i](#)

There are no carbohydrates in this entry.

6.4 Ligands [i](#)

In the following table, the Atoms column lists the number of modelled atoms in the group and the number defined in the chemical component dictionary. LLDF column lists the quality of electron density of the group with respect to its neighbouring residues in protein, DNA or RNA chains. The B-factors column lists the minimum, median, 95th percentile and maximum values of B factors of atoms in the group. The column labelled ‘Q< 0.9’ lists the number of atoms with occupancy less than 0.9.

Mol	Type	Chain	Res	Atoms	RSCC	RSR	LLDF	B-factors(\AA^2)	Q<0.9
3	7KL	B	601	32/36	0.89	0.19	1.14	40,50,121,143	32
3	7KL	A	601	26/36	0.94	0.14	0.08	29,40,62,63	26
3	7KL	A	603[A]	32/36	0.93	0.14	0.03	68,75,88,90	32
3	7KL	A	602	32/36	0.89	0.16	-0.14	73,80,93,95	32
3	7KL	A	604[B]	32/36	0.93	0.13	-0.21	69,75,88,89	32

6.5 Other polymers [i](#)

There are no such residues in this entry.