



# Full wwPDB X-ray Structure Validation Report ⓘ

Jan 31, 2017 – 11:09 PM EST

PDB ID : 5TMH  
Title : Structure of Zika virus NS5  
Authors : Wang, B.; Tan, X.; Song, J.  
Deposited on : 2016-10-12  
Resolution : 3.28 Å(reported)

This is a Full wwPDB X-ray Structure Validation Report for a publicly released PDB entry.

We welcome your comments at [validation@mail.wwpdb.org](mailto:validation@mail.wwpdb.org)

A user guide is available at

<http://wwpdb.org/validation/2016/XrayValidationReportHelp>

with specific help available everywhere you see the ⓘ symbol.

---

The following versions of software and data (see [references ⓘ](#)) were used in the production of this report:

MolProbity : 4.02b-467  
Mogul : 1.7.1 (RC1), CSD as537be (2016)  
Xtriage (Phenix) : 1.9-1692  
EDS : rb-20028442  
Percentile statistics : 20151230.v01 (using entries in the PDB archive December 30th 2015)  
Refmac : 5.8.0135  
CCP4 : 6.5.0  
Ideal geometry (proteins) : Engh & Huber (2001)  
Ideal geometry (DNA, RNA) : Parkinson et al. (1996)  
Validation Pipeline (wwPDB-VP) : rb-20028442

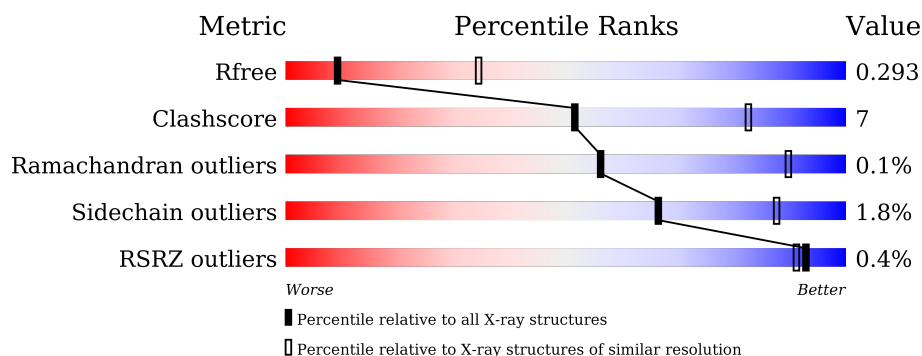
# 1 Overall quality at a glance

The following experimental techniques were used to determine the structure:

*X-RAY DIFFRACTION*



The reported resolution of this entry is 3.28 Å.

Percentile scores (ranging between 0-100) for global validation metrics of the entry are shown in the following graphic. The table shows the number of entries on which the scores are based.



Metric	Whole archive (#Entries)	Similar resolution (#Entries, resolution range(Å))
$R_{free}$	91344	1756 (3.36-3.20)
Clashscore	102246	1941 (3.36-3.20)
Ramachandran outliers	100387	1905 (3.36-3.20)
Sidechain outliers	100360	1903 (3.36-3.20)
RSRZ outliers	91569	1764 (3.36-3.20)

The table below summarises the geometric issues observed across the polymeric chains and their fit to the electron density. The red, orange, yellow and green segments on the lower bar indicate the fraction of residues that contain outliers for  $\geq 3$ , 2, 1 and 0 types of geometric quality criteria. A grey segment represents the fraction of residues that are not modelled. The numeric value for each fraction is indicated below the corresponding segment, with a dot representing fractions  $\leq 5\%$ . The upper red bar (where present) indicates the fraction of residues that have poor fit to the electron density. The numeric value is given above the bar.

Mol	Chain	Length	Quality of chain
1	A	902	
1	B	902	

## 2 Entry composition [i](#)

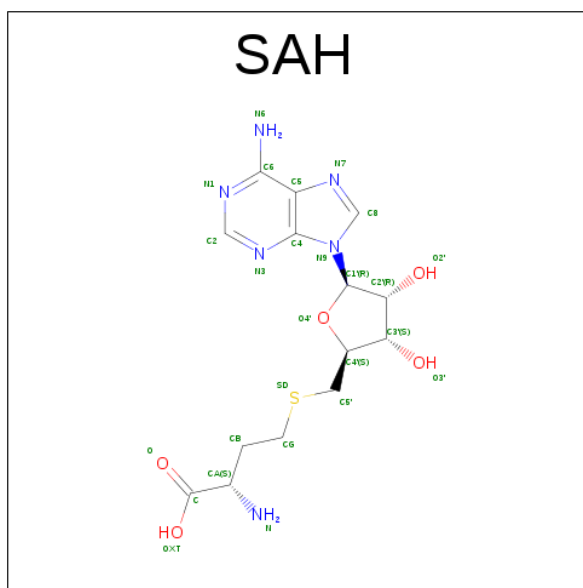
There are 5 unique types of molecules in this entry. The entry contains 13429 atoms, of which 0 are hydrogens and 0 are deuteriums.

In the tables below, the ZeroOcc column contains the number of atoms modelled with zero occupancy, the AltConf column contains the number of residues with at least one atom in alternate conformation and the Trace column contains the number of residues modelled with at most 2 atoms.

- Molecule 1 is a protein called Polypeptide.

Mol	Chain	Residues	Atoms					ZeroOcc	AltConf	Trace
1	A	880	Total	C	N	O	S	0	0	0
			6678	4222	1180	1229	47			
1	B	880	Total	C	N	O	S	0	0	0
			6661	4213	1180	1220	48			

- Molecule 2 is S-ADENOSYL-L-HOMOCYSTEINE (three-letter code: SAH) (formula:  $C_{14}H_{20}N_6O_5S$ ).

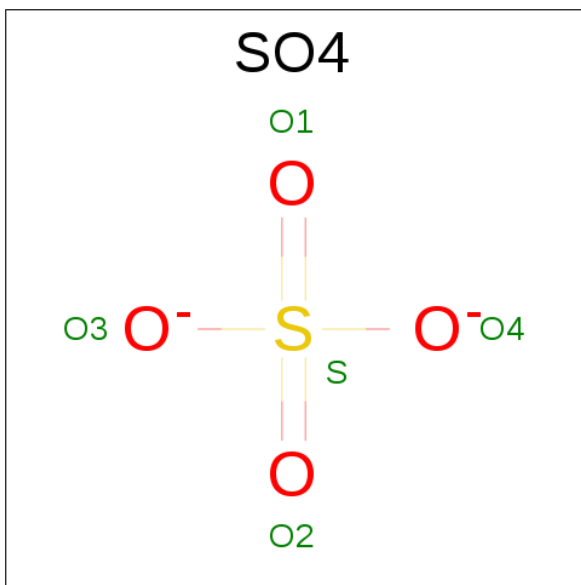


Mol	Chain	Residues	Atoms					ZeroOcc	AltConf
2	A	1	Total	C	N	O	S	0	0
			26	14	6	5	1		
2	B	1	Total	C	N	O	S	0	0
			26	14	6	5	1		

- Molecule 3 is ZINC ION (three-letter code: ZN) (formula:  $Zn$ ).

Mol	Chain	Residues	Atoms		ZeroOcc	AltConf
3	B	2	Total	Zn	0	0
			2	2		
3	A	2	Total	Zn	0	0
			2	2		

- Molecule 4 is SULFATE ION (three-letter code: SO4) (formula: O<sub>4</sub>S).



Mol	Chain	Residues	Atoms			ZeroOcc	AltConf
4	A	1	Total	O	S	0	0
			5	4	1		
4	B	1	Total	O	S	0	0
			5	4	1		

- Molecule 5 is GLYCEROL (three-letter code: GOL) (formula: C<sub>3</sub>H<sub>8</sub>O<sub>3</sub>).

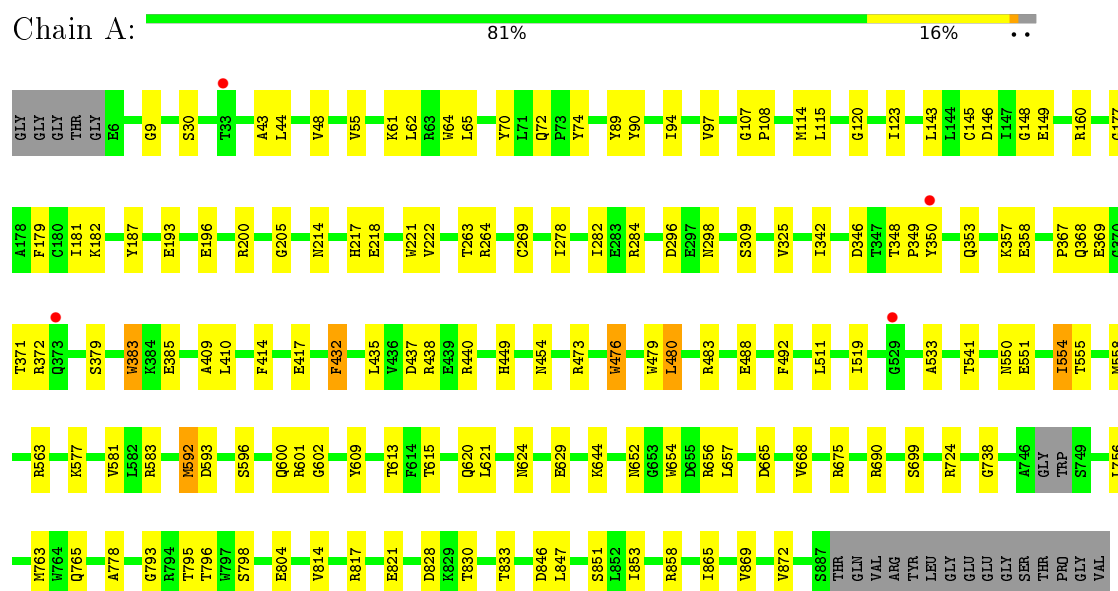


Mol	Chain	Residues	Atoms			ZeroOcc	AltConf
5	A	1	Total	C	O	0	0
			6	3	3		
5	A	1	Total	C	O	0	0
			6	3	3		
5	B	1	Total	C	O	0	0
			6	3	3		
5	B	1	Total	C	O	0	0
			6	3	3		

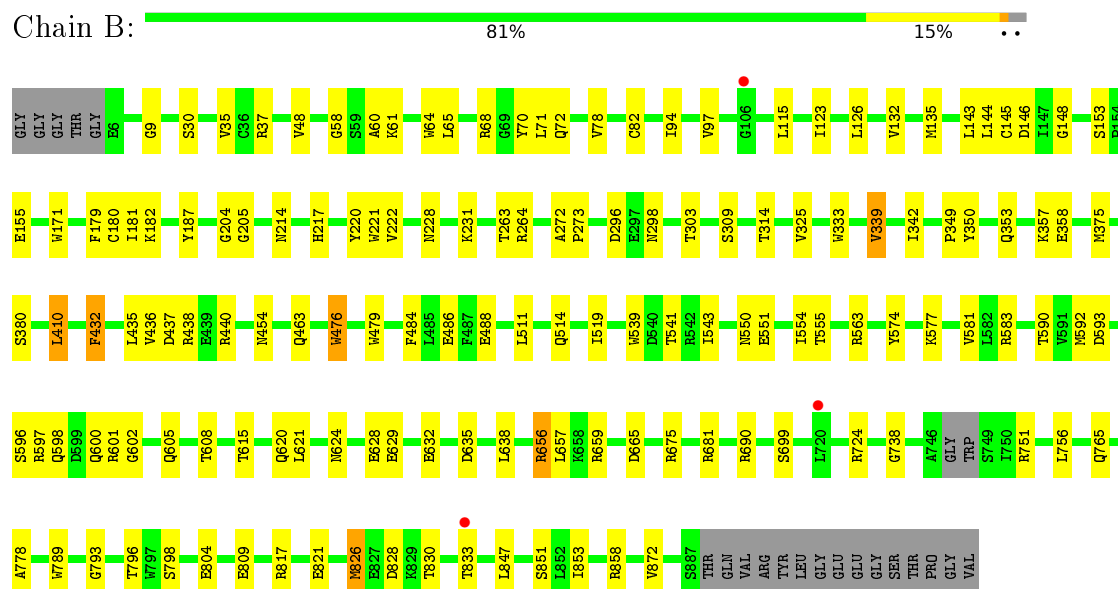
### 3 Residue-property plots

These plots are drawn for all protein, RNA and DNA chains in the entry. The first graphic for a chain summarises the proportions of errors displayed in the second graphic. The second graphic shows the sequence view annotated by issues in geometry and electron density. Residues are color-coded according to the number of geometric quality criteria for which they contain at least one outlier: green = 0, yellow = 1, orange = 2 and red = 3 or more. A red dot above a residue indicates a poor fit to the electron density ( $RSRZ > 2$ ). Stretches of 2 or more consecutive residues without any outlier are shown as a green connector. Residues present in the sample, but not in the model, are shown in grey.

#### • Molecule 1: Polyprotein



#### • Molecule 1: Polyprotein



## 4 Data and refinement statistics

Property	Value	Source
Space group	P 2 <sub>1</sub> 2 <sub>1</sub> 2 <sub>1</sub>	Depositor
Cell constants a, b, c, $\alpha$ , $\beta$ , $\gamma$	95.14Å 136.48Å 196.98Å 90.00° 90.00° 90.00°	Depositor
Resolution (Å)	49.24 – 3.28 49.24 – 3.28	Depositor EDS
% Data completeness (in resolution range)	98.2 (49.24-3.28) 98.2 (49.24-3.28)	Depositor EDS
$R_{merge}$	(Not available)	Depositor
$R_{sym}$	(Not available)	Depositor
$\langle I/\sigma(I) \rangle$ <sup>1</sup>	1.12 (at 3.25Å)	Xtriage
Refinement program	PHENIX (1.10.1 _2155: ???)	Depositor
R, $R_{free}$	0.262 , 0.293 0.255 , 0.293	Depositor DCC
$R_{free}$ test set	1986 reflections (5.04%)	DCC
Wilson B-factor (Å <sup>2</sup> )	50.2	Xtriage
Anisotropy	1.053	Xtriage
Bulk solvent $k_{sol}$ (e/Å <sup>3</sup> ), $B_{sol}$ (Å <sup>2</sup> )	0.30 , 34.0	EDS
L-test for twinning <sup>2</sup>	$\langle  L  \rangle = 0.41$ , $\langle L^2 \rangle = 0.24$	Xtriage
Estimated twinning fraction	No twinning to report.	Xtriage
$F_o, F_c$ correlation	0.90	EDS
Total number of atoms	13429	wwPDB-VP
Average B, all atoms (Å <sup>2</sup> )	54.0	wwPDB-VP

Xtriage's analysis on translational NCS is as follows: *The analyses of the Patterson function reveals a significant off-origin peak that is 45.95 % of the origin peak, indicating pseudo translational symmetry. The chance of finding a peak of this or larger height randomly in a structure without pseudo translational symmetry is equal to 1.2270e-04. The detected translational NCS is most likely also responsible for the elevated intensity ratio.*

<sup>1</sup> Intensities estimated from amplitudes.

<sup>2</sup> Theoretical values of  $\langle |L| \rangle$ ,  $\langle L^2 \rangle$  for acentric reflections are 0.5, 0.333 respectively for untwinned datasets, and 0.375, 0.2 for perfectly twinned datasets.

## 5 Model quality [i](#)

### 5.1 Standard geometry [i](#)

Bond lengths and bond angles in the following residue types are not validated in this section: GOL, ZN, SAH, SO4

The Z score for a bond length (or angle) is the number of standard deviations the observed value is removed from the expected value. A bond length (or angle) with  $|Z| > 5$  is considered an outlier worth inspection. RMSZ is the root-mean-square of all Z scores of the bond lengths (or angles).

Mol	Chain	Bond lengths		Bond angles	
		RMSZ	$\# Z  > 5$	RMSZ	$\# Z  > 5$
1	A	0.25	0/6837	0.44	1/9301 (0.0%)
1	B	0.24	0/6820	0.44	1/9278 (0.0%)
All	All	0.25	0/13657	0.44	2/18579 (0.0%)

There are no bond length outliers.

All (2) bond angle outliers are listed below:

Mol	Chain	Res	Type	Atoms	Z	Observed(°)	Ideal(°)
1	A	432	PHE	CG-CD2-CE2	6.56	128.01	120.80
1	B	432	PHE	CG-CD2-CE2	6.56	128.01	120.80

There are no chirality outliers.

There are no planarity outliers.

### 5.2 Too-close contacts [i](#)

In the following table, the Non-H and H(model) columns list the number of non-hydrogen atoms and hydrogen atoms in the chain respectively. The H(added) column lists the number of hydrogen atoms added and optimized by MolProbity. The Clashes column lists the number of clashes within the asymmetric unit, whereas Symm-Clashes lists symmetry related clashes.

Mol	Chain	Non-H	H(model)	H(added)	Clashes	Symm-Clashes
1	A	6678	0	6190	88	0
1	B	6661	0	6165	87	0
2	A	26	0	19	0	0
2	B	26	0	19	2	0
3	A	2	0	0	0	0
3	B	2	0	0	0	0
4	A	5	0	0	1	0

*Continued on next page...*



*Continued from previous page...*

Mol	Chain	Non-H	H(model)	H(added)	Clashes	Symm-Clashes
4	B	5	0	0	0	0
5	A	12	0	16	2	0
5	B	12	0	16	0	0
All	All	13429	0	12425	175	0

The all-atom clashscore is defined as the number of clashes found per 1000 atoms (including hydrogen atoms). The all-atom clashscore for this structure is 7.

All (175) close contacts within the same asymmetric unit are listed below, sorted by their clash magnitude.

Atom-1	Atom-2	Interatomic distance (Å)	Clash overlap (Å)
1:B:690:ARG:NH1	1:B:699:SER:OG	2.03	0.91
1:B:628:GLU:OE2	1:B:656:ARG:NH1	2.13	0.82
1:B:551:GLU:OE2	1:B:615:THR:OG1	1.98	0.79
1:B:296:ASP:OD2	1:B:583:ARG:NH2	2.12	0.76
1:B:205:GLY:O	1:B:221:TRP:HA	1.92	0.69
1:B:724:ARG:HD3	1:B:828:ASP:HB3	1.74	0.69
1:A:409:ALA:O	1:A:483:ARG:NH2	2.18	0.69
1:A:454:ASN:O	1:A:476:TRP:HA	1.92	0.69
1:A:30:SER:O	1:A:214:ASN:ND2	2.24	0.68
1:B:551:GLU:OE1	1:B:601:ARG:NH2	2.27	0.68
1:A:9:GLY:HA3	1:A:187:TYR:HB2	1.76	0.67
1:B:555:THR:HB	1:B:563:ARG:HG3	1.76	0.66
1:A:551:GLU:OE2	1:A:615:THR:OG1	2.16	0.64
1:A:555:THR:HB	1:A:563:ARG:HG3	1.79	0.64
1:B:804:GLU:OE2	1:B:804:GLU:N	2.24	0.64
1:B:148:GLY:O	1:B:182:LYS:NZ	2.27	0.63
1:B:9:GLY:HA3	1:B:187:TYR:HB2	1.81	0.63
1:A:724:ARG:NH1	1:A:830:THR:O	2.29	0.61
1:B:621:LEU:HD11	1:B:657:LEU:HD11	1.83	0.60
1:B:454:ASN:O	1:B:476:TRP:HA	2.02	0.60
1:B:30:SER:O	1:B:214:ASN:ND2	2.35	0.59
1:B:756:LEU:HD13	1:B:793:GLY:HA3	1.84	0.59
1:B:70:TYR:HB3	1:B:222:VAL:HG21	1.85	0.59
1:A:342:ILE:HD12	1:A:738:GLY:HA3	1.85	0.58
1:A:796:THR:HG22	1:A:798:SER:H	1.69	0.57
1:A:97:VAL:O	1:A:264:ARG:NH1	2.37	0.57
1:A:621:LEU:HD11	1:A:657:LEU:HD11	1.85	0.57
1:A:853:ILE:HA	1:A:858:ARG:HD3	1.87	0.57
1:A:61:LYS:NZ	1:A:218:GLU:OE2	2.34	0.57
1:B:486:GLU:OE2	1:B:574:TYR:OH	2.19	0.56

*Continued on next page...*

*Continued from previous page...*

Atom-1	Atom-2	Interatomic distance (Å)	Clash overlap (Å)
1:B:342:ILE:HD12	1:B:738:GLY:HA3	1.88	0.56
1:A:440:ARG:NH2	1:A:488:GLU:OE1	2.38	0.56
1:A:476:TRP:CD1	1:A:476:TRP:N	2.74	0.56
1:A:70:TYR:HB3	1:A:222:VAL:HG21	1.88	0.56
1:B:629:GLU:OE1	1:B:675:ARG:NH1	2.38	0.56
1:B:796:THR:HG22	1:B:798:SER:H	1.70	0.56
1:B:432:PHE:CZ	1:B:432:PHE:CD1	2.93	0.56
1:B:357:LYS:HG3	1:B:358:GLU:HG2	1.88	0.55
1:B:143:LEU:O	1:B:179:PHE:HA	2.06	0.55
1:B:853:ILE:HA	1:B:858:ARG:HH11	1.72	0.55
1:B:272:ALA:O	1:B:598:GLN:NE2	2.40	0.55
1:B:303:THR:O	1:B:597:ARG:NH1	2.40	0.55
1:A:756:LEU:HD13	1:A:793:GLY:HA3	1.89	0.55
1:A:690:ARG:NH1	1:A:699:SER:OG	2.37	0.55
1:B:228:ASN:HB3	1:B:231:LYS:HE2	1.89	0.55
1:B:71:LEU:HD22	1:B:180:CYS:HB2	1.90	0.54
1:B:817:ARG:HA	1:B:821:GLU:HB3	1.89	0.54
1:A:143:LEU:O	1:A:179:PHE:HA	2.08	0.54
1:B:724:ARG:NH1	1:B:830:THR:O	2.38	0.54
1:A:432:PHE:CD1	1:A:432:PHE:CZ	2.93	0.54
1:A:473:ARG:NH2	4:A:1004:SO4:O2	2.40	0.53
1:A:551:GLU:OE1	1:A:601:ARG:NH2	2.40	0.53
1:A:581:VAL:HG23	1:A:593:ASP:HB2	1.91	0.53
1:A:554:ILE:HG22	1:A:558:MET:HE3	1.91	0.53
1:B:435:LEU:HD23	1:B:438:ARG:HH12	1.73	0.52
1:A:44:LEU:HD11	1:A:55:VAL:HA	1.91	0.52
1:A:417:GLU:N	1:A:417:GLU:OE1	2.42	0.52
1:A:817:ARG:HA	1:A:821:GLU:HB3	1.90	0.52
1:B:476:TRP:N	1:B:476:TRP:CD1	2.77	0.52
1:A:160:ARG:HH21	5:A:1005:GOL:H11	1.74	0.52
1:A:804:GLU:OE2	1:A:804:GLU:N	2.30	0.52
1:B:620:GLN:O	1:B:624:ASN:ND2	2.39	0.52
1:A:621:LEU:HD21	1:A:657:LEU:HD12	1.93	0.51
1:A:385:GLU:OE1	1:A:654:TRP:NE1	2.43	0.51
1:A:511:LEU:HD13	1:A:519:ILE:HD11	1.93	0.50
1:B:436:VAL:HG11	1:B:484:PHE:CE2	2.46	0.50
1:A:367:PRO:O	1:A:372:ARG:NH2	2.45	0.50
1:B:204:GLY:HA3	1:B:221:TRP:HE1	1.75	0.50
1:A:145:CYS:HB3	1:A:181:ILE:HG23	1.94	0.50
1:A:64:TRP:HE3	1:A:65:LEU:HD12	1.77	0.50
1:A:146:ASP:HA	1:A:182:LYS:HB2	1.93	0.50

*Continued on next page...*

*Continued from previous page...*

Atom-1	Atom-2	Interatomic distance (Å)	Clash overlap (Å)
1:A:263:THR:O	1:A:298:ASN:HB3	2.12	0.50
1:A:437:ASP:OD1	1:A:440:ARG:NH1	2.44	0.50
1:B:153:SER:OG	1:B:155:GLU:OE1	2.29	0.50
1:B:61:LYS:HD3	1:B:220:TYR:CE2	2.46	0.50
1:B:541:THR:HA	1:B:600:GLN:HG2	1.93	0.49
1:A:309:SER:HA	1:A:592:MET:O	2.11	0.49
1:A:724:ARG:HD3	1:A:828:ASP:HB3	1.95	0.49
1:A:72:GLN:N	1:A:72:GLN:OE1	2.45	0.49
1:B:82:CYS:SG	1:B:126:LEU:HD22	2.53	0.49
1:B:333:TRP:HB3	1:B:339:VAL:HG21	1.96	0.48
1:A:205:GLY:O	1:A:221:TRP:HA	2.13	0.48
1:B:309:SER:HA	1:B:592:MET:O	2.14	0.48
1:A:765:GLN:HG3	1:A:778:ALA:HB1	1.94	0.48
1:A:357:LYS:HG3	1:A:358:GLU:HG2	1.94	0.48
1:A:435:LEU:HD23	1:A:438:ARG:HH12	1.78	0.48
1:B:228:ASN:HB3	1:B:231:LYS:HB3	1.95	0.48
1:B:145:CYS:HB3	1:B:181:ILE:HG23	1.95	0.48
1:B:217:HIS:ND1	1:B:217:HIS:O	2.46	0.48
1:B:72:GLN:N	1:B:72:GLN:OE1	2.46	0.47
1:B:847:LEU:HA	1:B:851:SER:HB3	1.96	0.47
1:A:665:ASP:OD1	1:A:665:ASP:N	2.48	0.47
1:B:632:GLU:N	1:B:635:ASP:OD2	2.41	0.47
1:B:665:ASP:OD1	1:B:665:ASP:N	2.48	0.47
1:B:58:GLY:HA3	2:B:1001:SAH:O	2.14	0.46
1:B:146:ASP:HA	1:B:182:LYS:HB2	1.96	0.46
1:A:89:TYR:OH	1:A:114:MET:O	2.26	0.46
1:A:62:LEU:HD23	1:A:90:TYR:HD2	1.80	0.46
1:B:577:LYS:O	1:B:596:SER:HA	2.16	0.46
1:B:751:ARG:NH1	1:B:789:TRP:CE2	2.83	0.46
1:A:492:PHE:HZ	1:A:554:ILE:HG21	1.81	0.46
1:A:349:PRO:O	1:A:353:GLN:HB2	2.15	0.46
1:A:383:TRP:CD2	1:A:554:ILE:HG12	2.50	0.46
1:B:581:VAL:HG23	1:B:593:ASP:HB2	1.96	0.46
1:A:369:GLU:HA	1:A:372:ARG:HD2	1.97	0.46
1:B:656:ARG:HD3	1:B:659:ARG:HD2	1.97	0.46
1:A:217:HIS:O	1:A:217:HIS:ND1	2.48	0.45
1:A:609:TYR:O	1:A:613:THR:OG1	2.29	0.45
1:B:325:VAL:HG13	1:B:872:VAL:HG11	1.98	0.45
1:B:314:THR:HG23	1:B:590:THR:HG21	1.97	0.45
1:B:765:GLN:HG3	1:B:778:ALA:HB1	1.98	0.45
1:B:476:TRP:CE2	1:B:602:GLY:HA2	2.52	0.45

*Continued on next page...*

*Continued from previous page...*

Atom-1	Atom-2	Interatomic distance (Å)	Clash overlap (Å)
1:A:325:VAL:HG13	1:A:872:VAL:HG11	1.98	0.45
1:B:511:LEU:HD13	1:B:519:ILE:HD11	1.99	0.45
1:B:853:ILE:HA	1:B:858:ARG:NH1	2.32	0.45
1:B:349:PRO:O	1:B:353:GLN:HB2	2.17	0.45
1:B:309:SER:OG	1:B:593:ASP:OD1	2.24	0.45
1:B:437:ASP:OD1	1:B:440:ARG:NH1	2.50	0.44
1:B:440:ARG:NH2	1:B:488:GLU:OE1	2.50	0.44
1:A:652:ASN:O	1:A:656:ARG:HG2	2.17	0.44
1:A:847:LEU:HA	1:A:851:SER:HB3	1.99	0.44
1:B:375:MET:HB3	1:B:550:ASN:ND2	2.33	0.44
1:A:368:GLN:O	1:A:371:THR:OG1	2.28	0.44
1:B:621:LEU:HD21	1:B:657:LEU:HD12	1.99	0.44
1:A:148:GLY:O	1:A:182:LYS:NZ	2.42	0.43
1:B:132:VAL:HA	1:B:135:MET:HB2	2.00	0.43
1:A:865:ILE:O	1:A:869:VAL:HG23	2.18	0.43
1:B:78:VAL:HG11	1:B:171:TRP:CZ3	2.54	0.43
1:A:193:GLU:OE1	1:B:681:ARG:NH2	2.50	0.43
1:A:296:ASP:OD2	1:A:583:ARG:NH2	2.33	0.43
1:A:620:GLN:O	1:A:624:ASN:ND2	2.46	0.43
1:A:379:SER:CB	1:A:550:ASN:HB3	2.49	0.43
1:B:263:THR:O	1:B:298:ASN:HB3	2.18	0.43
1:A:43:ALA:HB1	1:A:48:VAL:CG2	2.49	0.43
1:B:35:VAL:HG11	1:B:60:ALA:CB	2.49	0.43
1:B:724:ARG:HB3	1:B:826:MET:HE1	2.02	0.42
1:A:115:LEU:HB3	1:A:350:TYR:OH	2.19	0.42
1:A:120:GLY:HA2	1:A:264:ARG:HG3	2.00	0.42
1:A:346:ASP:OD1	1:A:348:THR:OG1	2.27	0.42
1:A:533:ALA:HB2	1:A:668:VAL:HG22	2.01	0.42
1:A:629:GLU:OE1	1:A:675:ARG:NH1	2.53	0.42
1:A:107:GLY:HA3	1:A:108:PRO:HD3	1.92	0.42
1:A:541:THR:HA	1:A:600:GLN:HG2	2.01	0.42
1:A:149:GLU:O	1:A:160:ARG:NH1	2.47	0.42
1:A:577:LYS:O	1:A:596:SER:HA	2.20	0.42
1:A:414:PHE:HB2	1:A:417:GLU:OE1	2.20	0.42
1:A:43:ALA:HB1	1:A:48:VAL:HG22	2.01	0.42
1:B:68:ARG:HG3	1:B:68:ARG:HH11	1.85	0.42
1:A:123:ILE:HD13	1:A:264:ARG:HD3	2.02	0.42
1:B:583:ARG:NE	1:B:593:ASP:OD2	2.50	0.42
1:B:64:TRP:HE3	1:B:65:LEU:HD12	1.84	0.42
1:A:763:MET:SD	1:A:795:THR:OG1	2.69	0.42
1:A:94:ILE:HB	1:A:97:VAL:HG23	2.01	0.42

*Continued on next page...*

Continued from previous page...

Atom-1	Atom-2	Interatomic distance (Å)	Clash overlap (Å)
1:B:146:ASP:OD1	1:B:182:LYS:HD2	2.20	0.41
1:A:278:ILE:O	1:A:282:ILE:HG12	2.20	0.41
1:A:476:TRP:CE2	1:A:602:GLY:HA2	2.55	0.41
2:B:1001:SAH:H8	2:B:1001:SAH:H2'	1.93	0.41
1:B:115:LEU:HB3	1:B:350:TYR:OH	2.21	0.41
1:B:144:LEU:HD22	1:B:180:CYS:HB3	2.02	0.41
1:A:160:ARG:NH2	5:A:1005:GOL:H11	2.35	0.41
1:A:196:GLU:O	1:A:200:ARG:HG3	2.21	0.41
1:A:284:ARG:NH1	1:A:449:HIS:O	2.53	0.41
1:A:74:TYR:OH	1:A:177:GLY:HA3	2.20	0.41
1:B:514:GLN:N	1:B:514:GLN:OE1	2.49	0.41
1:B:809:GLU:OE2	1:B:817:ARG:NH2	2.52	0.41
1:A:383:TRP:HA	1:A:383:TRP:CE3	2.55	0.41
1:B:97:VAL:O	1:B:264:ARG:NH1	2.52	0.41
1:A:846:ASP:OD1	1:A:851:SER:HB2	2.21	0.41
1:B:539:TRP:NE1	1:B:543:ILE:HD11	2.36	0.41
1:B:94:ILE:HB	1:B:97:VAL:HG23	2.03	0.40
1:B:123:ILE:HD13	1:B:264:ARG:HD3	2.03	0.40
1:A:480:LEU:HD23	1:A:480:LEU:HA	1.92	0.40
1:B:273:PRO:HA	1:B:598:GLN:HE21	1.86	0.40
1:B:436:VAL:HG11	1:B:484:PHE:HE2	1.86	0.40
1:B:605:GLN:HB2	1:B:608:THR:OG1	2.22	0.40

There are no symmetry-related clashes.

## 5.3 Torsion angles [i](#)

### 5.3.1 Protein backbone [i](#)

In the following table, the Percentiles column shows the percent Ramachandran outliers of the chain as a percentile score with respect to all X-ray entries followed by that with respect to entries of similar resolution.

The Analysed column shows the number of residues for which the backbone conformation was analysed, and the total number of residues.

Mol	Chain	Analysed	Favoured	Allowed	Outliers	Percentiles	
1	A	876/902 (97%)	832 (95%)	44 (5%)	0	100	100
1	B	874/902 (97%)	824 (94%)	48 (6%)	2 (0%)	52	86
All	All	1750/1804 (97%)	1656 (95%)	92 (5%)	2 (0%)	56	90

All (2) Ramachandran outliers are listed below:

Mol	Chain	Res	Type
1	B	48	VAL
1	B	410	LEU

### 5.3.2 Protein sidechains ⓘ

In the following table, the Percentiles column shows the percent sidechain outliers of the chain as a percentile score with respect to all X-ray entries followed by that with respect to entries of similar resolution.

The Analysed column shows the number of residues for which the sidechain conformation was analysed, and the total number of residues.

Mol	Chain	Analysed	Rotameric	Outliers	Percentiles	
1	A	641/766 (84%)	630 (98%)	11 (2%)	68	88
1	B	638/766 (83%)	626 (98%)	12 (2%)	65	87
All	All	1279/1532 (84%)	1256 (98%)	23 (2%)	66	87

All (23) residues with a non-rotameric sidechain are listed below:

Mol	Chain	Res	Type
1	A	269	CYS
1	A	383	TRP
1	A	410	LEU
1	A	476	TRP
1	A	479	TRP
1	A	480	LEU
1	A	554	ILE
1	A	592	MET
1	A	644	LYS
1	A	814	VAL
1	A	833	THR
1	B	37	ARG
1	B	339	VAL
1	B	380	SER
1	B	410	LEU
1	B	463	GLN
1	B	476	TRP
1	B	479	TRP
1	B	554	ILE
1	B	638	LEU
1	B	656	ARG

*Continued on next page...*

*Continued from previous page...*

Mol	Chain	Res	Type
1	B	826	MET
1	B	833	THR

Some sidechains can be flipped to improve hydrogen bonding and reduce clashes. All (1) such sidechains are listed below:

Mol	Chain	Res	Type
1	B	368	GLN

### 5.3.3 RNA [i](#)

There are no RNA molecules in this entry.

## 5.4 Non-standard residues in protein, DNA, RNA chains [i](#)

There are no non-standard protein/DNA/RNA residues in this entry.

## 5.5 Carbohydrates [i](#)

There are no carbohydrates in this entry.

## 5.6 Ligand geometry [i](#)

Of 12 ligands modelled in this entry, 4 are monoatomic - leaving 8 for Mogul analysis.

In the following table, the Counts columns list the number of bonds (or angles) for which Mogul statistics could be retrieved, the number of bonds (or angles) that are observed in the model and the number of bonds (or angles) that are defined in the chemical component dictionary. The Link column lists molecule types, if any, to which the group is linked. The Z score for a bond length (or angle) is the number of standard deviations the observed value is removed from the expected value. A bond length (or angle) with  $|Z| > 2$  is considered an outlier worth inspection. RMSZ is the root-mean-square of all Z scores of the bond lengths (or angles).

Mol	Type	Chain	Res	Link	Bond lengths			Bond angles		
					Counts	RMSZ	$\# Z  > 2$	Counts	RMSZ	$\# Z  > 2$
2	SAH	A	1001	-	22,28,28	1.08	2 (9%)	18,40,40	2.89	3 (16%)
4	SO4	A	1004	-	4,4,4	0.26	0	6,6,6	0.06	0
5	GOL	A	1005	-	5,5,5	0.35	0	5,5,5	0.19	0
5	GOL	A	1006	-	5,5,5	0.36	0	5,5,5	0.20	0
2	SAH	B	1001	-	22,28,28	1.07	2 (9%)	18,40,40	2.88	2 (11%)

Mol	Type	Chain	Res	Link	Bond lengths			Bond angles		
					Counts	RMSZ	# Z  > 2	Counts	RMSZ	# Z  > 2
4	SO4	B	1004	-	4,4,4	0.27	0	6,6,6	0.08	0
5	GOL	B	1005	-	5,5,5	0.36	0	5,5,5	0.18	0
5	GOL	B	1006	-	5,5,5	0.35	0	5,5,5	0.18	0

In the following table, the Chirals column lists the number of chiral outliers, the number of chiral centers analysed, the number of these observed in the model and the number defined in the chemical component dictionary. Similar counts are reported in the Torsion and Rings columns. '-' means no outliers of that kind were identified.

Mol	Type	Chain	Res	Link	Chirals	Torsions	Rings
2	SAH	A	1001	-	-	0/7/31/31	0/3/3/3
4	SO4	A	1004	-	-	0/0/0/0	0/0/0/0
5	GOL	A	1005	-	-	0/4/4/4	0/0/0/0
5	GOL	A	1006	-	-	0/4/4/4	0/0/0/0
2	SAH	B	1001	-	-	0/7/31/31	0/3/3/3
4	SO4	B	1004	-	-	0/0/0/0	0/0/0/0
5	GOL	B	1005	-	-	0/4/4/4	0/0/0/0
5	GOL	B	1006	-	-	0/4/4/4	0/0/0/0

All (4) bond length outliers are listed below:

Mol	Chain	Res	Type	Atoms	Z	Observed(Å)	Ideal(Å)
2	B	1001	SAH	C2-N1	2.30	1.38	1.33
2	A	1001	SAH	C2-N1	2.38	1.38	1.33
2	B	1001	SAH	C2-N3	3.56	1.38	1.32
2	A	1001	SAH	C2-N3	3.57	1.38	1.32

All (5) bond angle outliers are listed below:

Mol	Chain	Res	Type	Atoms	Z	Observed(°)	Ideal(°)
2	B	1001	SAH	N3-C2-N1	-11.04	120.20	128.87
2	A	1001	SAH	N3-C2-N1	-10.94	120.28	128.87
2	B	1001	SAH	C5'-SD-CG	-3.89	90.60	102.42
2	A	1001	SAH	C5'-SD-CG	-3.57	91.56	102.42
2	A	1001	SAH	O4'-C1'-N9	2.57	112.96	108.11

There are no chirality outliers.

There are no torsion outliers.

There are no ring outliers.

3 monomers are involved in 5 short contacts:



Mol	Chain	Res	Type	Clashes	Symm-Clashes
4	A	1004	SO4	1	0
5	A	1005	GOL	2	0
2	B	1001	SAH	2	0

## 5.7 Other polymers [i](#)

There are no such residues in this entry.

## 5.8 Polymer linkage issues [i](#)

There are no chain breaks in this entry.

## 6 Fit of model and data [i](#)

### 6.1 Protein, DNA and RNA chains [i](#)

In the following table, the column labelled ‘#RSRZ> 2’ contains the number (and percentage) of RSRZ outliers, followed by percent RSRZ outliers for the chain as percentile scores relative to all X-ray entries and entries of similar resolution. The OWAB column contains the minimum, median, 95<sup>th</sup> percentile and maximum values of the occupancy-weighted average B-factor per residue. The column labelled ‘Q< 0.9’ lists the number of (and percentage) of residues with an average occupancy less than 0.9.

Mol	Chain	Analysed	<RSRZ>	#RSRZ>2	OWAB(Å <sup>2</sup> )	Q<0.9
1	A	880/902 (97%)	-0.13	4 (0%) 91 89	25, 41, 67, 80	0
1	B	880/902 (97%)	0.02	3 (0%) 94 93	47, 63, 87, 101	0
All	All	1760/1804 (97%)	-0.05	7 (0%) 93 91	25, 57, 80, 101	0

All (7) RSRZ outliers are listed below:

Mol	Chain	Res	Type	RSRZ
1	A	33	THR	2.9
1	A	350	TYR	2.7
1	B	833	THR	2.5
1	A	529	GLY	2.2
1	B	720	LEU	2.2
1	A	373	GLN	2.2
1	B	106	GLY	2.0

### 6.2 Non-standard residues in protein, DNA, RNA chains [i](#)

There are no non-standard protein/DNA/RNA residues in this entry.

### 6.3 Carbohydrates [i](#)

There are no carbohydrates in this entry.

### 6.4 Ligands [i](#)

In the following table, the Atoms column lists the number of modelled atoms in the group and the number defined in the chemical component dictionary. LLDF column lists the quality of electron density of the group with respect to its neighbouring residues in protein, DNA or RNA chains. The B-factors column lists the minimum, median, 95<sup>th</sup> percentile and maximum values of B factors

of atoms in the group. The column labelled 'Q< 0.9' lists the number of atoms with occupancy less than 0.9.

Mol	Type	Chain	Res	Atoms	RSCC	RSR	LLDF	B-factors( $\text{\AA}^2$ )	Q<0.9
3	ZN	A	1002	1/1	0.94	0.19	-0.10	74,74,74,74	0
2	SAH	A	1001	26/26	0.93	0.24	-0.15	27,42,57,68	0
4	SO4	A	1004	5/5	0.94	0.17	-0.67	56,65,82,94	0
2	SAH	B	1001	26/26	0.95	0.20	-0.75	26,44,53,54	0
3	ZN	A	1003	1/1	0.98	0.14	-1.51	64,64,64,64	0
3	ZN	B	1003	1/1	0.96	0.09	-1.54	42,42,42,42	0
3	ZN	B	1002	1/1	0.94	0.06	-4.84	20,20,20,20	0
5	GOL	B	1005	6/6	0.81	0.21	-	57,60,66,68	0
5	GOL	A	1006	6/6	0.75	0.27	-	40,61,71,72	0
5	GOL	B	1006	6/6	0.88	0.39	-	34,40,46,47	0
5	GOL	A	1005	6/6	0.92	0.26	-	24,30,48,49	0
4	SO4	B	1004	5/5	0.81	0.57	-	154,160,176,183	0

## 6.5 Other polymers [i](#)

There are no such residues in this entry.