



Full wwPDB X-ray Structure Validation Report ⓘ

Feb 1, 2016 – 01:28 PM GMT

PDB ID : 3TW5
Title : Crystal structure of the GP42 transglutaminase from Phytophthora sojae
Authors : Reiss, K.; Kirchner, E.; Zocher, G.; Stehle, T.
Deposited on : 2011-09-21
Resolution : 2.95 Å(reported)

This is a Full wwPDB X-ray Structure Validation Report for a publicly released PDB entry.
We welcome your comments at validation@mail.wwpdb.org
A user guide is available at
<http://wwpdb.org/validation/2016/XrayValidationReportHelp>
with specific help available everywhere you see the ⓘ symbol.

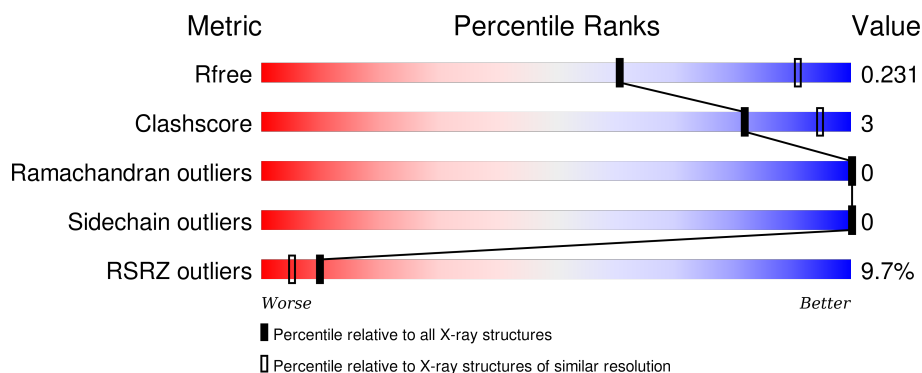
The following versions of software and data (see [references ⓘ](#)) were used in the production of this report:

MolProbity : 4.02b-467
Mogul : 1.7 (RC4), CSD as536be (2015)
Xtriage (Phenix) : 1.9-1692
EDS : rb-20026688
Percentile statistics : 20151230.v01 (using entries in the PDB archive December 30th 2015)
Refmac : 5.8.0135
CCP4 : 6.5.0
Ideal geometry (proteins) : Engh & Huber (2001)
Ideal geometry (DNA, RNA) : Parkinson et al. (1996)
Validation Pipeline (wwPDB-VP) : trunk26865

i

X-RAY DIFFRACTION

Percentile scores (ranging between 0-100) for global validation metrics of the entry are shown in the following graphic. The table shows the number of entries on which the scores are based.



Metric	Whole archive (#Entries)	Similar resolution (#Entries, resolution range(Å))
R _{free}	91344	2184 (3.00-2.92)
Clashscore	102246	2552 (3.00-2.92)
Ramachandran outliers	100387	2468 (3.00-2.92)
Sidechain outliers	100360	2471 (3.00-2.92)
RSRZ outliers	91569	2201 (3.00-2.92)

The table below summarises the geometric issues observed across the polymeric chains and their fit to the electron density. The red, orange, yellow and green segments on the lower bar indicate the fraction of residues that contain outliers for ≥ 3 , 2, 1 and 0 types of geometric quality criteria. A grey segment represents the fraction of residues that are not modelled. The numeric value for each fraction is indicated below the corresponding segment, with a dot representing fractions $\leq 5\%$. The upper red bar (where present) indicates the fraction of residues that have poor fit to the electron density. The numeric value is given above the bar.

Mol	Chain	Length	Quality of chain
1	A	367	<div> <div style="width: 8%; background-color: red;"></div> <div style="width: 87%; background-color: green;"></div> <div style="width: 6%; background-color: yellow;"></div> <div style="width: 6%; background-color: gray;"></div> </div>
1	B	367	<div> <div style="width: 10%; background-color: red;"></div> <div style="width: 87%; background-color: green;"></div> <div style="width: 7%; background-color: yellow;"></div> <div style="width: 6%; background-color: gray;"></div> </div>

2 Entry composition [i](#)

There are 2 unique types of molecules in this entry. The entry contains 5255 atoms, of which 0 are hydrogens and 0 are deuteriums.

In the tables below, the ZeroOcc column contains the number of atoms modelled with zero occupancy, the AltConf column contains the number of residues with at least one atom in alternate conformation and the Trace column contains the number of residues modelled with at most 2 atoms.

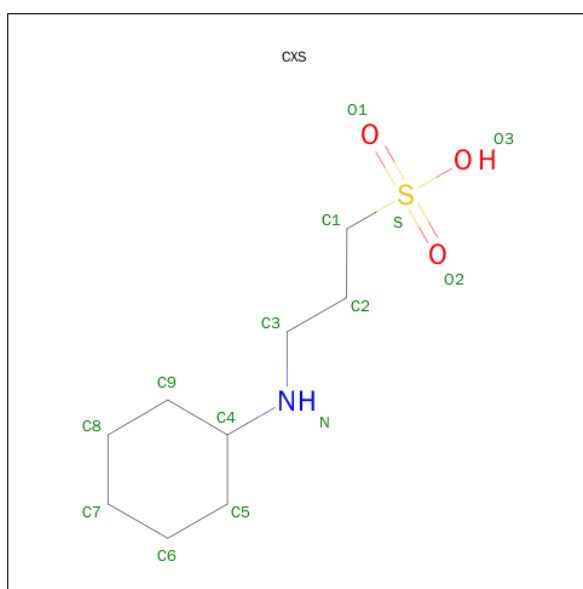
- Molecule 1 is a protein called Transglutaminase elicitor.

Mol	Chain	Residues	Atoms					ZeroOcc	AltConf	Trace
1	A	344	Total	C	N	O	S	0	0	0
			2619	1669	417	521	12			
1	B	344	Total	C	N	O	S	0	0	0
			2608	1663	415	518	12			

There are 2 discrepancies between the modelled and reference sequences:

Chain	Residue	Modelled	Actual	Comment	Reference
A	290	SER	CYS	ENGINEERED MUTATION	UNP Q6Q475
B	290	SER	CYS	ENGINEERED MUTATION	UNP Q6Q475

- Molecule 2 is 3-CYCLOHEXYL-1-PROPYLSULFONIC ACID (three-letter code: CXS) (formula: C₉H₁₉NO₃S).



Mol	Chain	Residues	Atoms					ZeroOcc	AltConf
2	A	1	Total	C	N	O	S	0	0
			14	9	1	3	1		

Continued on next page...

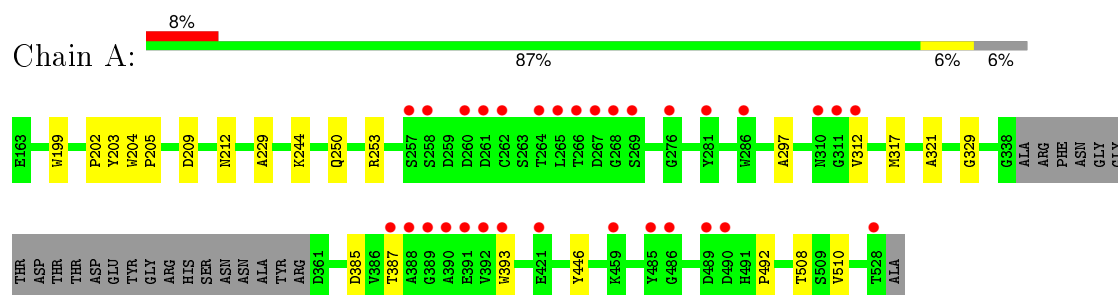
Continued from previous page...

Mol	Chain	Residues	Atoms					ZeroOcc	AltConf
2	A	1	Total	C	N	O	S	0	0
			14	9	1	3	1		

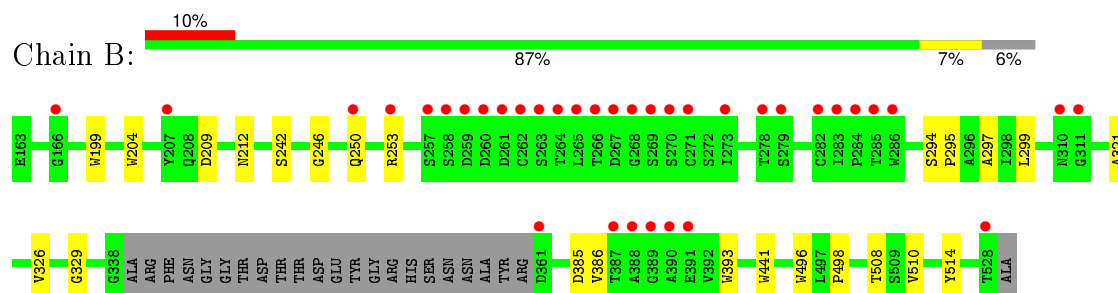
3 Residue-property plots [i](#)

These plots are drawn for all protein, RNA and DNA chains in the entry. The first graphic for a chain summarises the proportions of errors displayed in the second graphic. The second graphic shows the sequence view annotated by issues in geometry and electron density. Residues are color-coded according to the number of geometric quality criteria for which they contain at least one outlier: green = 0, yellow = 1, orange = 2 and red = 3 or more. A red dot above a residue indicates a poor fit to the electron density ($\text{RSRZ} > 2$). Stretches of 2 or more consecutive residues without any outlier are shown as a green connector. Residues present in the sample, but not in the model, are shown in grey.

• Molecule 1: Transglutaminase elicitor



• Molecule 1: Transglutaminase elicitor



4 Data and refinement statistics

Property	Value	Source
Space group	P 62 2 2	Depositor
Cell constants a, b, c, α , β , γ	195.48 Å 195.48 Å 137.30 Å 90.00° 90.00° 120.00°	Depositor
Resolution (Å)	30.00 – 2.95 33.86 – 2.86	Depositor EDS
% Data completeness (in resolution range)	96.6 (30.00-2.95) 96.7 (33.86-2.86)	Depositor EDS
R_{merge}	0.14	Depositor
R_{sym}	0.09	Depositor
$\langle I/\sigma(I) \rangle$ ¹	2.21 (at 2.85 Å)	Xtriage
Refinement program	REFMAC 5.5.0109	Depositor
R, R_{free}	0.215 , 0.234 0.211 , 0.231	Depositor DCC
R_{free} test set	1595 reflections (5.27%)	DCC
Wilson B-factor (Å ²)	48.5	Xtriage
Anisotropy	0.428	Xtriage
Bulk solvent k_{sol} (e/Å ³), B_{sol} (Å ²)	0.41 , 22.8	EDS
Estimated twinning fraction	No twinning to report.	Xtriage
L-test for twinning ²	$\langle L \rangle = 0.50$, $\langle L^2 \rangle = 0.33$	Xtriage
Outliers	0 of 34981 reflections	Xtriage
F_o, F_c correlation	0.92	EDS
Total number of atoms	5255	wwPDB-VP
Average B, all atoms (Å ²)	46.0	wwPDB-VP

Xtriage's analysis on translational NCS is as follows: *The largest off-origin peak in the Patterson function is 3.03% of the height of the origin peak. No significant pseudotranslation is detected.*

¹Intensities estimated from amplitudes.

²Theoretical values of $\langle |L| \rangle$, $\langle L^2 \rangle$ for acentric reflections are 0.5, 0.375 respectively for untwinned datasets, and 0.333, 0.2 for perfectly twinned datasets.

5 Model quality

5.1 Standard geometry

Bond lengths and bond angles in the following residue types are not validated in this section: CXS

The Z score for a bond length (or angle) is the number of standard deviations the observed value is removed from the expected value. A bond length (or angle) with $|Z| > 5$ is considered an outlier worth inspection. RMSZ is the root-mean-square of all Z scores of the bond lengths (or angles).

Mol	Chain	Bond lengths		Bond angles	
		RMSZ	$\# Z > 5$	RMSZ	$\# Z > 5$
1	A	0.32	0/2690	0.46	0/3674
1	B	0.32	0/2679	0.46	0/3661
All	All	0.32	0/5369	0.46	0/7335

There are no bond length outliers.

There are no bond angle outliers.

There are no chirality outliers.

There are no planarity outliers.

5.2 Too-close contacts

In the following table, the Non-H and H(model) columns list the number of non-hydrogen atoms and hydrogen atoms in the chain respectively. The H(added) column lists the number of hydrogen atoms added and optimized by MolProbity. The Clashes column lists the number of clashes within the asymmetric unit, whereas Symm-Clashes lists symmetry related clashes.

Mol	Chain	Non-H	H(model)	H(added)	Clashes	Symm-Clashes
1	A	2619	0	2451	20	0
1	B	2608	0	2432	13	0
2	A	28	0	38	0	0
All	All	5255	0	4921	33	0

The all-atom clashscore is defined as the number of clashes found per 1000 atoms (including hydrogen atoms). The all-atom clashscore for this structure is 3.

All (33) close contacts within the same asymmetric unit are listed below, sorted by their clash magnitude.

Atom-1	Atom-2	Interatomic distance (Å)	Clash overlap (Å)
1:A:387:THR:HG21	1:A:393:TRP:HD1	1.59	0.66
1:B:508:THR:HG22	1:B:510:VAL:H	1.59	0.65
1:A:202:PRO:HD3	1:A:317:MET:HE1	1.81	0.63
1:A:508:THR:HG22	1:A:510:VAL:H	1.64	0.62
1:A:244:LYS:HG3	1:A:510:VAL:HG12	1.84	0.59
1:A:204:TRP:CZ2	1:A:321:ALA:HB2	2.38	0.58
1:A:385:ASP:HA	1:A:393:TRP:O	2.07	0.55
1:A:202:PRO:HD3	1:A:317:MET:CE	2.37	0.54
1:A:317:MET:HE1	1:A:446:TYR:HA	1.89	0.54
1:B:299:LEU:HD11	1:B:498:PRO:HB2	1.90	0.53
1:A:229:ALA:HB2	1:A:312:VAL:CG1	2.38	0.53
1:B:386:VAL:HG11	1:B:441:TRP:CZ2	2.43	0.53
1:A:202:PRO:HG2	1:A:204:TRP:CE2	2.43	0.53
1:A:317:MET:CE	1:A:446:TYR:HA	2.40	0.51
1:B:204:TRP:CZ2	1:B:321:ALA:HB2	2.46	0.50
1:A:250:GLN:HE21	1:A:253:ARG:HE	1.60	0.49
1:A:329:GLY:HA3	1:A:508:THR:HG23	1.94	0.49
1:A:250:GLN:NE2	1:A:253:ARG:HE	2.11	0.49
1:B:295:PRO:HG3	1:B:496:TRP:CH2	2.49	0.48
1:A:387:THR:HG21	1:A:393:TRP:CD1	2.43	0.48
1:B:385:ASP:HA	1:B:393:TRP:O	2.15	0.47
1:B:199:TRP:CE2	1:B:297:ALA:HA	2.49	0.47
1:B:294:SER:HB2	1:B:295:PRO:HD3	1.97	0.45
1:A:199:TRP:CE2	1:A:297:ALA:HA	2.51	0.44
1:A:385:ASP:O	1:A:492:PRO:HA	2.18	0.44
1:A:203:TYR:CZ	1:A:205:PRO:HG3	2.52	0.44
1:B:209:ASP:O	1:B:212:ASN:HB2	2.19	0.43
1:B:242:SER:HA	1:B:246:GLY:HA3	2.01	0.42
1:B:326:VAL:HG11	1:B:514:TYR:CD1	2.53	0.42
1:A:209:ASP:O	1:A:212:ASN:HB2	2.19	0.42
1:A:229:ALA:HB2	1:A:312:VAL:HG11	2.02	0.41
1:B:250:GLN:HE21	1:B:253:ARG:HE	1.68	0.41
1:B:329:GLY:HA3	1:B:508:THR:HG23	2.03	0.40

There are no symmetry-related clashes.

5.3 Torsion angles ⓘ

5.3.1 Protein backbone ⓘ

In the following table, the Percentiles column shows the percent Ramachandran outliers of the chain as a percentile score with respect to all X-ray entries followed by that with respect to entries

of similar resolution.

The Analysed column shows the number of residues for which the backbone conformation was analysed, and the total number of residues.

Mol	Chain	Analysed	Favoured	Allowed	Outliers	Percentiles	
1	A	340/367 (93%)	323 (95%)	17 (5%)	0	100	100
1	B	340/367 (93%)	324 (95%)	16 (5%)	0	100	100
All	All	680/734 (93%)	647 (95%)	33 (5%)	0	100	100

There are no Ramachandran outliers to report.

5.3.2 Protein sidechains ⓘ

In the following table, the Percentiles column shows the percent sidechain outliers of the chain as a percentile score with respect to all X-ray entries followed by that with respect to entries of similar resolution.

The Analysed column shows the number of residues for which the sidechain conformation was analysed, and the total number of residues.

Mol	Chain	Analysed	Rotameric	Outliers	Percentiles	
1	A	275/300 (92%)	275 (100%)	0	100	100
1	B	272/300 (91%)	272 (100%)	0	100	100
All	All	547/600 (91%)	547 (100%)	0	100	100

There are no protein residues with a non-rotameric sidechain to report.

Some sidechains can be flipped to improve hydrogen bonding and reduce clashes. All (6) such sidechains are listed below:

Mol	Chain	Res	Type
1	A	250	GLN
1	A	491	HIS
1	B	250	GLN
1	B	333	GLN
1	B	415	GLN
1	B	505	ASN

5.3.3 RNA ⓘ

There are no RNA molecules in this entry.

5.4 Non-standard residues in protein, DNA, RNA chains [i](#)

There are no non-standard protein/DNA/RNA residues in this entry.

5.5 Carbohydrates [i](#)

There are no carbohydrates in this entry.

5.6 Ligand geometry [i](#)

2 ligands are modelled in this entry.

In the following table, the Counts columns list the number of bonds (or angles) for which Mogul statistics could be retrieved, the number of bonds (or angles) that are observed in the model and the number of bonds (or angles) that are defined in the chemical component dictionary. The Link column lists molecule types, if any, to which the group is linked. The Z score for a bond length (or angle) is the number of standard deviations the observed value is removed from the expected value. A bond length (or angle) with $|Z| > 2$ is considered an outlier worth inspection. RMSZ is the root-mean-square of all Z scores of the bond lengths (or angles).

Mol	Type	Chain	Res	Link	Bond lengths			Bond angles		
					Counts	RMSZ	$\# Z > 2$	Counts	RMSZ	$\# Z > 2$
2	CXS	A	1	-	13,14,14	0.83	0	15,18,18	1.34	2 (13%)
2	CXS	A	530	-	13,14,14	0.84	0	15,18,18	1.15	2 (13%)

In the following table, the Chirals column lists the number of chiral outliers, the number of chiral centers analysed, the number of these observed in the model and the number defined in the chemical component dictionary. Similar counts are reported in the Torsion and Rings columns. '-' means no outliers of that kind were identified.

Mol	Type	Chain	Res	Link	Chirals	Torsions	Rings
2	CXS	A	1	-	-	0/8/16/16	0/1/1/1
2	CXS	A	530	-	-	0/8/16/16	0/1/1/1

There are no bond length outliers.

All (4) bond angle outliers are listed below:

Mol	Chain	Res	Type	Atoms	Z	Observed(°)	Ideal(°)
2	A	530	CXS	O2-S-C1	2.52	109.06	106.91
2	A	530	CXS	O1-S-C1	2.95	109.42	106.91
2	A	1	CXS	O2-S-C1	3.03	109.49	106.91
2	A	1	CXS	O1-S-C1	3.38	109.79	106.91

There are no chirality outliers.

There are no torsion outliers.

There are no ring outliers.

No monomer is involved in short contacts.

5.7 Other polymers

There are no such residues in this entry.

5.8 Polymer linkage issues

There are no chain breaks in this entry.

6 Fit of model and data

6.1 Protein, DNA and RNA chains

In the following table, the column labelled ‘#RSRZ> 2’ contains the number (and percentage) of RSRZ outliers, followed by percent RSRZ outliers for the chain as percentile scores relative to all X-ray entries and entries of similar resolution. The OWAB column contains the minimum, median, 95th percentile and maximum values of the occupancy-weighted average B-factor per residue. The column labelled ‘Q< 0.9’ lists the number of (and percentage) of residues with an average occupancy less than 0.9.

Mol	Chain	Analysed	<RSRZ>	#RSRZ>2	OWAB(Å ²)	Q<0.9
1	A	344/367 (93%)	0.30	31 (9%) 12 6	35, 44, 67, 75	0
1	B	344/367 (93%)	0.35	36 (10%) 8 4	35, 44, 68, 76	0
All	All	688/734 (93%)	0.33	67 (9%) 10 5	35, 44, 68, 76	0

All (67) RSRZ outliers are listed below:

Mol	Chain	Res	Type	RSRZ
1	A	390	ALA	7.2
1	A	387	THR	5.4
1	B	264	THR	5.4
1	B	263	SER	5.0
1	B	390	ALA	4.9
1	A	265	LEU	4.8
1	B	389	GLY	4.8
1	B	268	GLY	4.6
1	B	262	CYS	4.5
1	A	389	GLY	4.4
1	A	267	ASP	4.4
1	B	388	ALA	4.3
1	B	266	THR	4.2
1	B	278	THR	4.2
1	B	267	ASP	4.2
1	B	387	THR	4.1
1	B	269	SER	4.0
1	B	260	ASP	3.9
1	A	266	THR	3.8
1	B	265	LEU	3.7
1	B	258	SER	3.4
1	B	286	TRP	3.3
1	A	388	ALA	3.2
1	B	259	ASP	3.2

Continued on next page...

Continued from previous page...

Mol	Chain	Res	Type	RSRZ
1	A	268	GLY	3.1
1	A	393	TRP	3.1
1	A	391	GLU	3.1
1	A	260	ASP	3.1
1	B	391	GLU	3.0
1	A	528	THR	2.9
1	B	284	PRO	2.9
1	A	286	TRP	2.9
1	B	257	SER	2.8
1	B	528	THR	2.7
1	A	262	CYS	2.7
1	B	271	CYS	2.6
1	A	269	SER	2.6
1	A	392	VAL	2.5
1	B	207	TYR	2.5
1	B	270	SER	2.5
1	B	282	CYS	2.5
1	A	276	GLY	2.5
1	B	261	ASP	2.5
1	B	166	GLY	2.5
1	A	257	SER	2.4
1	A	490	ASP	2.4
1	B	250	GLN	2.4
1	B	253	ARG	2.4
1	B	279	SER	2.4
1	A	421	GLU	2.3
1	B	310	ASN	2.3
1	A	311	GLY	2.3
1	B	283	ILE	2.2
1	A	258	SER	2.2
1	A	310	ASN	2.2
1	A	459	LYS	2.2
1	A	312	VAL	2.2
1	B	273	ILE	2.2
1	A	281	TYR	2.1
1	B	361	ASP	2.1
1	A	264	THR	2.1
1	A	485	TYR	2.1
1	A	486	GLY	2.1
1	A	489	ASP	2.1
1	B	285	THR	2.1
1	B	311	GLY	2.0

Continued on next page...

Continued from previous page...

Mol	Chain	Res	Type	RSRZ
1	A	261	ASP	2.0

6.2 Non-standard residues in protein, DNA, RNA chains [i](#)

There are no non-standard protein/DNA/RNA residues in this entry.

6.3 Carbohydrates [i](#)

There are no carbohydrates in this entry.

6.4 Ligands [i](#)

In the following table, the Atoms column lists the number of modelled atoms in the group and the number defined in the chemical component dictionary. LLDF column lists the quality of electron density of the group with respect to its neighbouring residues in protein, DNA or RNA chains. The B-factors column lists the minimum, median, 95th percentile and maximum values of B factors of atoms in the group. The column labelled 'Q< 0.9' lists the number of atoms with occupancy less than 0.9.

Mol	Type	Chain	Res	Atoms	RSCC	RSR	LLDF	B-factors(Å ²)	Q<0.9
2	CXS	A	1	14/14	0.97	0.17	-0.42	42,43,46,47	0
2	CXS	A	530	14/14	0.96	0.17	-0.84	34,35,39,39	0

6.5 Other polymers [i](#)

There are no such residues in this entry.