



Full wwPDB X-ray Structure Validation Report ⓘ

Jan 31, 2016 – 10:34 PM GMT

PDB ID : 1U9E
Title : CRYSTAL STRUCTURE OF ESTROGEN RECEPTOR BETA COM-
PLEXED WITH WAY-397
Authors : Manas, E.S.; Unwalla, R.J.; Xu, Z.B.; Malamas, M.S.; Miller, C.P.; Harris,
H.A.; Hsiao, C.; Akopian, T.; Hum, W.T.; Malakian, K.; Wolfrom, S.; Bapat,
A.; Bhat, R.A.; Stahl, M.L.; Somers, W.S.; Alvarez, J.C.
Deposited on : 2004-08-09
Resolution : 2.40 Å(reported)

This is a Full wwPDB X-ray Structure Validation Report for a publicly released PDB entry.
We welcome your comments at validation@mail.wwpdb.org
A user guide is available at
<http://wwpdb.org/validation/2016/XrayValidationReportHelp>
with specific help available everywhere you see the ⓘ symbol.

The following versions of software and data (see [references ⓘ](#)) were used in the production of this report:

MolProbity : 4.02b-467
Mogul : 1.7 (RC4), CSD as536be (2015)
Xtriage (Phenix) : **NOT EXECUTED**
EDS : **NOT EXECUTED**
Percentile statistics : 20151230.v01 (using entries in the PDB archive December 30th 2015)
Ideal geometry (proteins) : Engh & Huber (2001)
Ideal geometry (DNA, RNA) : Parkinson et al. (1996)
Validation Pipeline (wwPDB-VP) : trunk26865

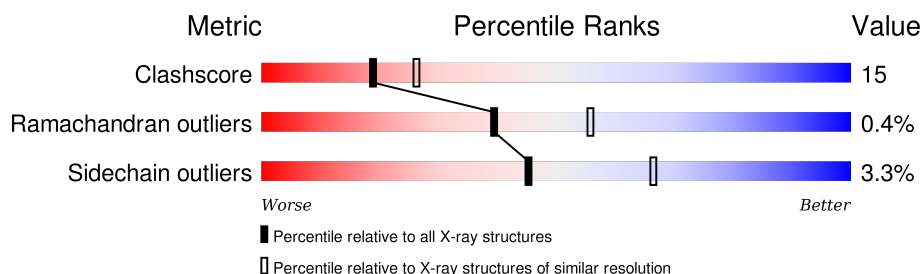
1 Overall quality at a glance

The following experimental techniques were used to determine the structure:

X-RAY DIFFRACTION

The reported resolution of this entry is 2.40 Å.

Percentile scores (ranging between 0-100) for global validation metrics of the entry are shown in the following graphic. The table shows the number of entries on which the scores are based.



Metric	Whole archive (#Entries)	Similar resolution (#Entries, resolution range(Å))
Clashscore	102246	3407 (2.40-2.40)
Ramachandran outliers	100387	3351 (2.40-2.40)
Sidechain outliers	100360	3352 (2.40-2.40)

The table below summarises the geometric issues observed across the polymeric chains and their fit to the electron density. The red, orange, yellow and green segments on the lower bar indicate the fraction of residues that contain outliers for ≥ 3 , 2, 1 and 0 types of geometric quality criteria. A grey segment represents the fraction of residues that are not modelled. The numeric value for each fraction is indicated below the corresponding segment, with a dot representing fractions $\leq 5\%$. The upper red bar (where present) indicates the fraction of residues that have poor fit to the electron density. The numeric value is given above the bar.

Note EDS was not executed.

Mol	Chain	Length	Quality of chain
1	A	241	
1	B	241	
2	C	9	
2	D	9	

2 Entry composition [i](#)

There are 4 unique types of molecules in this entry. The entry contains 3848 atoms, of which 0 are hydrogens and 0 are deuteriums.

In the tables below, the ZeroOcc column contains the number of atoms modelled with zero occupancy, the AltConf column contains the number of residues with at least one atom in alternate conformation and the Trace column contains the number of residues modelled with at most 2 atoms.

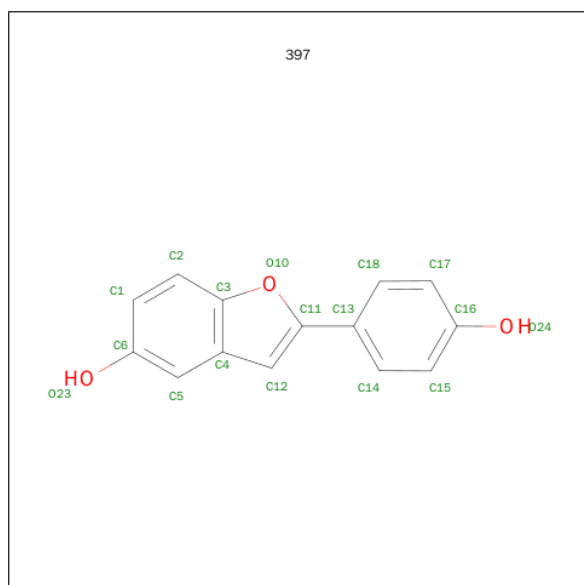
- Molecule 1 is a protein called Estrogen receptor beta.

Mol	Chain	Residues	Atoms					ZeroOcc	AltConf	Trace
1	A	223	Total	C	N	O	S	0	0	0
			1760	1132	297	312	19			
1	B	228	Total	C	N	O	S	0	0	0
			1805	1160	307	318	20			

- Molecule 2 is a protein called STEROID RECEPTOR COACTIVATOR-1.

Mol	Chain	Residues	Atoms				ZeroOcc	AltConf	Trace
2	C	9	Total	C	N	O	0	0	0
			71	46	11	14			
2	D	9	Total	C	N	O	0	0	0
			71	46	11	14			

- Molecule 3 is 2-(4-HYDROXY-PHENYL)BENZOFURAN-5-OL (three-letter code: 397) (formula: C₁₄H₁₀O₃).



Mol	Chain	Residues	Atoms			ZeroOcc	AltConf
3	A	1	Total	C	O	0	0
			17	14	3		
3	B	1	Total	C	O	0	0
			17	14	3		

- Molecule 4 is water.

Mol	Chain	Residues	Atoms		ZeroOcc	AltConf
4	A	52	Total	O	0	0
			52	52		
4	B	49	Total	O	0	0
			49	49		
4	C	2	Total	O	0	0
			2	2		
4	D	4	Total	O	0	0
			4	4		



4 Data and refinement statistics

Xtriage (Phenix) and EDS were not executed - this section will therefore be incomplete.

Property	Value	Source
Space group	P 21 21 21	Depositor
Cell constants a, b, c, α , β , γ	52.11Å 87.94Å 99.52Å 90.00° 90.00° 90.00°	Depositor
Resolution (Å)	19.85 – 2.40	Depositor
% Data completeness (in resolution range)	99.1 (19.85-2.40)	Depositor
R_{merge}	0.08	Depositor
R_{sym}	0.08	Depositor
Refinement program	CNS 1.1	Depositor
R, R_{free}	0.231 , 0.279	Depositor
Estimated twinning fraction	No twinning to report.	Xtriage
Total number of atoms	3848	wwPDB-VP
Average B, all atoms (Å ²)	30.0	wwPDB-VP

5 Model quality [i](#)

5.1 Standard geometry [i](#)

Bond lengths and bond angles in the following residue types are not validated in this section: 397

The Z score for a bond length (or angle) is the number of standard deviations the observed value is removed from the expected value. A bond length (or angle) with $|Z| > 5$ is considered an outlier worth inspection. RMSZ is the root-mean-square of all Z scores of the bond lengths (or angles).

Mol	Chain	Bond lengths		Bond angles	
		RMSZ	$\# Z > 5$	RMSZ	$\# Z > 5$
1	A	0.28	0/1791	0.49	0/2417
1	B	0.34	0/1837	0.54	2/2477 (0.1%)
2	C	0.39	0/70	0.59	0/93
2	D	0.38	0/70	0.64	0/93
All	All	0.32	0/3768	0.52	2/5080 (0.0%)

There are no bond length outliers.

All (2) bond angle outliers are listed below:

Mol	Chain	Res	Type	Atoms	Z	Observed(°)	Ideal(°)
1	B	478	ASN	CB-CG-ND2	-5.72	102.97	116.70
1	B	478	ASN	CB-CG-OD1	5.01	131.63	121.60

There are no chirality outliers.

There are no planarity outliers.

5.2 Too-close contacts [i](#)

In the following table, the Non-H and H(model) columns list the number of non-hydrogen atoms and hydrogen atoms in the chain respectively. The H(added) column lists the number of hydrogen atoms added and optimized by MolProbity. The Clashes column lists the number of clashes within the asymmetric unit, whereas Symm-Clashes lists symmetry related clashes.

Mol	Chain	Non-H	H(model)	H(added)	Clashes	Symm-Clashes
1	A	1760	0	1842	54	0
1	B	1805	0	1891	69	0
2	C	71	0	83	2	0
2	D	71	0	83	2	0
3	A	17	0	10	0	0

Continued on next page...

Continued from previous page...

Mol	Chain	Non-H	H(model)	H(added)	Clashes	Symm-Clashes
3	B	17	0	10	0	0
4	A	52	0	0	3	0
4	B	49	0	0	7	0
4	C	2	0	0	0	0
4	D	4	0	0	0	0
All	All	3848	0	3919	117	0

The all-atom clashscore is defined as the number of clashes found per 1000 atoms (including hydrogen atoms). The all-atom clashscore for this structure is 15.

All (117) close contacts within the same asymmetric unit are listed below, sorted by their clash magnitude.

Atom-1	Atom-2	Interatomic distance (Å)	Clash overlap (Å)
1:A:329:ARG:HH12	1:A:409:SER:HB3	1.42	0.84
1:B:482:LYS:HB3	1:B:484:VAL:HG23	1.60	0.82
1:A:340:MET:HE1	1:A:469:SER:N	1.98	0.78
1:B:340:MET:HE1	1:B:469:SER:N	1.99	0.77
1:A:463:SER:HA	4:B:89:HOH:O	1.85	0.77
1:B:303:ASP:OD1	1:B:490:LEU:HB3	1.91	0.70
1:A:386:ARG:NH1	1:A:461:LEU:HD21	2.09	0.67
1:B:409:SER:HB2	4:B:27:HOH:O	1.94	0.66
1:B:363:ASP:HB3	1:B:365:ASP:OD2	1.96	0.66
1:A:467:HIS:HB2	1:B:466:ARG:NH1	2.11	0.65
1:A:386:ARG:HH11	1:A:461:LEU:HD21	1.60	0.65
1:B:480:LYS:HB2	1:B:487:VAL:HG21	1.78	0.65
1:A:386:ARG:HG2	1:A:461:LEU:HD21	1.80	0.64
1:B:425:LYS:O	1:B:429:LEU:HD13	1.97	0.63
1:B:340:MET:O	1:B:344:MET:HG3	1.99	0.62
1:A:467:HIS:HB2	1:B:466:ARG:HH11	1.66	0.61
1:B:408:SER:C	1:B:410:MET:H	2.03	0.61
1:B:284:ARG:NH1	1:B:366:GLU:OE2	2.33	0.60
1:B:265:PRO:HB3	1:B:436:ALA:HA	1.82	0.60
1:A:329:ARG:HH12	1:A:409:SER:CB	2.14	0.60
1:A:486:PRO:HG2	1:A:488:TYR:CE1	2.37	0.59
1:A:466:ARG:NH1	1:B:467:HIS:HB2	2.18	0.59
1:A:291:GLU:HG3	1:A:370:VAL:HG22	1.86	0.58
1:B:463:SER:HA	4:B:89:HOH:O	2.03	0.57
1:A:400:VAL:HG13	1:A:462:LEU:HD21	1.85	0.57
1:B:480:LYS:HE2	1:B:492:LEU:HD13	1.86	0.57
1:B:328:VAL:O	1:B:332:GLU:HG3	2.05	0.57
1:A:296:MET:HB2	4:A:69:HOH:O	2.05	0.56

Continued on next page...

Continued from previous page...

Atom-1	Atom-2	Interatomic distance (Å)	Clash overlap (Å)
1:B:282:ILE:HD12	4:B:50:HOH:O	2.04	0.55
1:B:291:GLU:HG3	1:B:370:VAL:HA	1.88	0.55
1:A:340:MET:HE1	1:A:469:SER:CA	2.37	0.55
2:D:608:GLN:O	2:D:612:THR:HB	2.07	0.54
1:A:396:GLU:O	1:A:400:VAL:HG23	2.08	0.54
1:B:316:ILE:HD12	1:B:405:LEU:HD23	1.90	0.53
1:B:480:LYS:HE2	1:B:492:LEU:CD1	2.40	0.52
1:A:400:VAL:CG1	1:A:462:LEU:HD21	2.39	0.52
1:B:482:LYS:O	1:B:483:ASN:HB2	2.09	0.52
1:B:295:MET:HE1	1:B:298:LEU:HD12	1.90	0.52
1:A:489:ASP:HB3	2:C:605:LYS:CE	2.40	0.52
1:A:340:MET:HE1	1:A:468:ALA:C	2.30	0.52
1:B:373:ILE:HA	1:B:376:ILE:HD12	1.92	0.52
1:B:493:GLU:OE2	2:D:605:LYS:HB3	2.10	0.51
1:B:365:ASP:O	1:B:368:LYS:HG2	2.09	0.51
1:A:376:ILE:O	1:A:380:LEU:HG	2.09	0.51
1:B:340:MET:HE1	1:B:469:SER:CA	2.40	0.51
1:A:265:PRO:O	1:A:269:VAL:HG23	2.10	0.50
1:B:390:LEU:O	1:B:454:ARG:NH2	2.36	0.50
1:B:422:SER:N	4:B:25:HOH:O	2.44	0.50
1:B:370:VAL:HB	1:B:373:ILE:CG2	2.41	0.50
1:A:266:GLU:O	1:A:270:LEU:HD13	2.12	0.49
1:B:355:ILE:HD12	1:B:361:VAL:HG22	1.93	0.49
1:A:329:ARG:NH1	1:A:409:SER:HB3	2.20	0.49
1:A:268:LEU:O	1:A:271:THR:HG22	2.13	0.49
1:B:348:ILE:HG23	1:B:349:ASP:N	2.27	0.49
1:A:281:LEU:N	1:A:281:LEU:HD12	2.29	0.48
1:B:316:ILE:CD1	1:B:405:LEU:HD23	2.43	0.48
1:A:324:LEU:HD13	1:A:324:LEU:O	2.13	0.48
1:A:328:VAL:O	1:A:332:GLU:HG3	2.13	0.48
1:B:471:LYS:NZ	1:B:471:LYS:HB3	2.28	0.48
1:A:368:LYS:HG2	1:A:374:LEU:HD22	1.95	0.48
1:B:364:ARG:HD3	1:B:364:ARG:C	2.35	0.47
1:B:364:ARG:O	1:B:364:ARG:HD3	2.14	0.47
1:A:310:ILE:O	1:A:314:LYS:HG3	2.14	0.47
1:B:368:LYS:HD3	1:B:374:LEU:HD13	1.97	0.47
1:B:480:LYS:HB2	1:B:487:VAL:CG2	2.44	0.47
1:A:455:LEU:O	1:A:459:LEU:HG	2.14	0.47
1:B:265:PRO:O	1:B:269:VAL:HG23	2.14	0.47
1:A:266:GLU:HB2	1:A:439:TRP:CZ2	2.50	0.47
1:A:456:ALA:O	1:A:460:MET:HG3	2.15	0.46

Continued on next page...

Continued from previous page...

Atom-1	Atom-2	Interatomic distance (Å)	Clash overlap (Å)
1:A:275:ALA:HA	1:A:315:LYS:HD2	1.96	0.46
1:A:280:VAL:C	1:A:281:LEU:HD12	2.35	0.46
1:B:365:ASP:OD2	1:B:366:GLU:N	2.48	0.46
1:A:268:LEU:O	1:A:271:THR:CG2	2.63	0.46
1:B:471:LYS:HA	1:B:474:GLU:OE1	2.16	0.46
1:B:306:LEU:O	1:B:310:ILE:HG12	2.15	0.46
1:B:364:ARG:CZ	1:B:374:LEU:HD11	2.46	0.46
1:A:376:ILE:HD13	1:A:472:GLY:HA2	1.98	0.45
1:A:334:CYS:HB3	1:A:408:SER:OG	2.17	0.45
1:B:424:ARG:NE	4:B:25:HOH:O	2.50	0.45
1:B:478:ASN:HA	1:B:478:ASN:HD22	1.04	0.45
1:B:370:VAL:HB	1:B:373:ILE:HG21	1.98	0.44
1:A:467:HIS:O	1:A:471:LYS:HG2	2.17	0.44
1:B:461:LEU:O	1:B:465:VAL:HG23	2.17	0.44
1:A:364:ARG:HB2	4:A:79:HOH:O	2.18	0.44
1:B:268:LEU:CD1	1:B:317:PRO:HG2	2.47	0.44
1:A:386:ARG:HG2	1:A:386:ARG:HH11	1.81	0.44
1:A:466:ARG:HH12	1:B:467:HIS:HB2	1.82	0.43
1:A:311:SER:HB2	4:A:42:HOH:O	2.17	0.43
1:A:467:HIS:HB3	1:B:410:MET:HE1	2.01	0.43
1:A:364:ARG:HD2	1:A:378:ASP:OD1	2.17	0.43
1:B:476:LEU:HG	1:B:495:LEU:HD11	2.01	0.43
1:B:340:MET:HE1	1:B:468:ALA:C	2.39	0.43
1:B:436:ALA:O	1:B:440:VAL:HG23	2.19	0.43
1:A:464:HIS:HA	1:B:410:MET:SD	2.59	0.43
1:B:359:ASP:CG	1:B:359:ASP:O	2.56	0.43
1:B:341:MET:HA	1:B:344:MET:HE3	2.00	0.42
1:A:463:SER:HB3	1:B:466:ARG:NH2	2.33	0.42
1:A:385:SER:HA	1:A:388:ARG:NH1	2.34	0.42
1:A:334:CYS:HB3	1:A:408:SER:CB	2.48	0.42
1:B:296:MET:CE	1:B:300:LYS:HE2	2.49	0.42
1:B:408:SER:C	1:B:410:MET:N	2.70	0.42
1:B:350:HIS:HD2	4:B:38:HOH:O	2.02	0.42
1:B:408:SER:O	1:B:410:MET:N	2.51	0.42
1:B:295:MET:CE	1:B:298:LEU:HD12	2.50	0.42
1:B:269:VAL:CG1	1:B:395:LYS:HG3	2.50	0.42
1:B:386:ARG:HG2	1:B:461:LEU:HD21	2.02	0.41
1:A:326:ASP:O	1:A:330:LEU:HG	2.21	0.41
1:A:344:MET:HB2	1:A:344:MET:HE3	1.82	0.41
1:B:368:LYS:CD	1:B:374:LEU:HD22	2.49	0.41
1:A:493:GLU:OE1	2:C:605:LYS:HB2	2.20	0.41

Continued on next page...

Continued from previous page...

Atom-1	Atom-2	Interatomic distance (Å)	Clash overlap (Å)
1:A:348:ILE:HG23	1:A:349:ASP:N	2.35	0.41
1:A:447:SER:O	1:A:451:GLN:HG3	2.21	0.41
1:B:295:MET:O	1:B:299:THR:OG1	2.36	0.40
1:A:332:GLU:HB3	1:A:497:ALA:O	2.21	0.40
1:B:269:VAL:HG11	1:B:395:LYS:HG3	2.03	0.40
1:B:324:LEU:HG	1:B:324:LEU:O	2.21	0.40
1:B:348:ILE:CG2	1:B:349:ASP:N	2.85	0.40

There are no symmetry-related clashes.

5.3 Torsion angles [i](#)

5.3.1 Protein backbone [i](#)

In the following table, the Percentiles column shows the percent Ramachandran outliers of the chain as a percentile score with respect to all X-ray entries followed by that with respect to entries of similar resolution.

The Analysed column shows the number of residues for which the backbone conformation was analysed, and the total number of residues.

Mol	Chain	Analysed	Favoured	Allowed	Outliers	Percentiles	
1	A	219/241 (91%)	211 (96%)	8 (4%)	0	100	100
1	B	224/241 (93%)	216 (96%)	6 (3%)	2 (1%)	21	30
2	C	7/9 (78%)	7 (100%)	0	0	100	100
2	D	7/9 (78%)	7 (100%)	0	0	100	100
All	All	457/500 (91%)	441 (96%)	14 (3%)	2 (0%)	39	56

All (2) Ramachandran outliers are listed below:

Mol	Chain	Res	Type
1	B	409	SER
1	B	317	PRO

5.3.2 Protein sidechains [i](#)

In the following table, the Percentiles column shows the percent sidechain outliers of the chain as a percentile score with respect to all X-ray entries followed by that with respect to entries of similar resolution.

The Analysed column shows the number of residues for which the sidechain conformation was analysed, and the total number of residues.

Mol	Chain	Analysed	Rotameric	Outliers	Percentiles	
1	A	201/216 (93%)	193 (96%)	8 (4%)	38	58
1	B	206/216 (95%)	200 (97%)	6 (3%)	50	71
2	C	9/9 (100%)	9 (100%)	0	100	100
2	D	9/9 (100%)	9 (100%)	0	100	100
All	All	425/450 (94%)	411 (97%)	14 (3%)	45	66

All (14) residues with a non-rotameric sidechain are listed below:

Mol	Chain	Res	Type
1	A	296	MET
1	A	321	GLU
1	A	373	ILE
1	A	409	SER
1	A	424	ARG
1	A	429	LEU
1	A	489	ASP
1	A	490	LEU
1	B	276	GLU
1	B	424	ARG
1	B	478	ASN
1	B	489	ASP
1	B	495	LEU
1	B	498	HIS

Some sidechains can be flipped to improve hydrogen bonding and reduce clashes. All (10) such sidechains are listed below:

Mol	Chain	Res	Type
1	A	407	ASN
1	A	449	GLN
1	A	470	ASN
1	B	279	HIS
1	B	308	HIS
1	B	407	ASN
1	B	478	ASN
1	B	483	ASN
1	B	496	ASN
1	B	498	HIS

5.3.3 RNA ⓘ

There are no RNA molecules in this entry.

5.4 Non-standard residues in protein, DNA, RNA chains ⓘ

There are no non-standard protein/DNA/RNA residues in this entry.

5.5 Carbohydrates ⓘ

There are no carbohydrates in this entry.

5.6 Ligand geometry ⓘ

2 ligands are modelled in this entry.

In the following table, the Counts columns list the number of bonds (or angles) for which Mogul statistics could be retrieved, the number of bonds (or angles) that are observed in the model and the number of bonds (or angles) that are defined in the chemical component dictionary. The Link column lists molecule types, if any, to which the group is linked. The Z score for a bond length (or angle) is the number of standard deviations the observed value is removed from the expected value. A bond length (or angle) with $|Z| > 2$ is considered an outlier worth inspection. RMSZ is the root-mean-square of all Z scores of the bond lengths (or angles).

Mol	Type	Chain	Res	Link	Bond lengths			Bond angles		
					Counts	RMSZ	# $ Z > 2$	Counts	RMSZ	# $ Z > 2$
3	397	A	201	-	15,19,19	1.93	5 (33%)	18,27,27	0.95	1 (5%)
3	397	B	202	-	15,19,19	1.96	5 (33%)	18,27,27	0.95	1 (5%)

In the following table, the Chirals column lists the number of chiral outliers, the number of chiral centers analysed, the number of these observed in the model and the number defined in the chemical component dictionary. Similar counts are reported in the Torsion and Rings columns. '-' means no outliers of that kind were identified.

Mol	Type	Chain	Res	Link	Chirals	Torsions	Rings
3	397	A	201	-	-	0/2/4/4	0/2/3/3
3	397	B	202	-	-	0/2/4/4	0/2/3/3

All (10) bond length outliers are listed below:

Mol	Chain	Res	Type	Atoms	Z	Observed(Å)	Ideal(Å)
3	B	202	397	C13-C11	-3.35	1.41	1.46

Continued on next page...

Continued from previous page...

Mol	Chain	Res	Type	Atoms	Z	Observed(Å)	Ideal(Å)
3	A	201	397	C13-C11	-3.18	1.42	1.46
3	B	202	397	C18-C13	2.61	1.44	1.39
3	A	201	397	C5-C6	2.62	1.42	1.37
3	B	202	397	C14-C13	2.64	1.45	1.39
3	A	201	397	C14-C13	2.69	1.45	1.39
3	B	202	397	C5-C6	2.72	1.42	1.37
3	A	201	397	C18-C13	2.77	1.45	1.39
3	B	202	397	C2-C1	2.88	1.42	1.36
3	A	201	397	C2-C1	2.91	1.42	1.36

All (2) bond angle outliers are listed below:

Mol	Chain	Res	Type	Atoms	Z	Observed(°)	Ideal(°)
3	A	201	397	C18-C13-C11	2.55	122.92	120.45
3	B	202	397	C18-C13-C11	2.56	122.93	120.45

There are no chirality outliers.

There are no torsion outliers.

There are no ring outliers.

No monomer is involved in short contacts.

5.7 Other polymers [i](#)

There are no such residues in this entry.

5.8 Polymer linkage issues [i](#)

There are no chain breaks in this entry.

6 Fit of model and data [i](#)

6.1 Protein, DNA and RNA chains [i](#)

EDS was not executed - this section will therefore be empty.

6.2 Non-standard residues in protein, DNA, RNA chains [i](#)

EDS was not executed - this section will therefore be empty.

6.3 Carbohydrates [i](#)

EDS was not executed - this section will therefore be empty.

6.4 Ligands [i](#)

EDS was not executed - this section will therefore be empty.

6.5 Other polymers [i](#)

EDS was not executed - this section will therefore be empty.