



wwPDB X-ray Structure Validation Summary Report ⓘ

Feb 1, 2016 – 01:43 PM GMT

PDB ID : 3ULE
Title : Structure of Bos taurus Arp2/3 complex with bound inhibitor CK-869 and ATP
Authors : Nolen, B.J.; Han, M.
Deposited on : 2011-11-10
Resolution : 2.50 Å(reported)

This is a wwPDB X-ray Structure Validation Summary Report for a publicly released PDB entry.
We welcome your comments at validation@mail.wwpdb.org
A user guide is available at
<http://wwpdb.org/validation/2016/XrayValidationReportHelp>
with specific help available everywhere you see the ⓘ symbol.

The following versions of software and data (see [references ⓘ](#)) were used in the production of this report:

MolProbity : 4.02b-467
Mogul : 1.7 (RC4), CSD as536be (2015)
Xtriage (Phenix) : 1.9-1692
EDS : rb-20026688
Percentile statistics : 20151230.v01 (using entries in the PDB archive December 30th 2015)
Refmac : 5.8.0135
CCP4 : 6.5.0
Ideal geometry (proteins) : Engh & Huber (2001)
Ideal geometry (DNA, RNA) : Parkinson et al. (1996)
Validation Pipeline (wwPDB-VP) : trunk26865

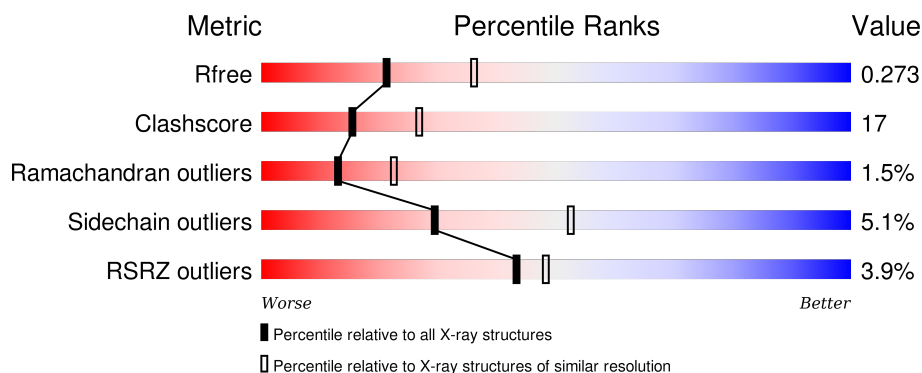
1 Overall quality at a glance

The following experimental techniques were used to determine the structure:

X-RAY DIFFRACTION

The reported resolution of this entry is 2.50 Å.

Percentile scores (ranging between 0-100) for global validation metrics of the entry are shown in the following graphic. The table shows the number of entries on which the scores are based.



Metric	Whole archive (#Entries)	Similar resolution (#Entries, resolution range(Å))
R_{free}	91344	3553 (2.50-2.50)
Clashscore	102246	4242 (2.50-2.50)
Ramachandran outliers	100387	4156 (2.50-2.50)
Sidechain outliers	100360	4158 (2.50-2.50)
RSRZ outliers	91569	3562 (2.50-2.50)

The table below summarises the geometric issues observed across the polymeric chains and their fit to the electron density. The red, orange, yellow and green segments on the lower bar indicate the fraction of residues that contain outliers for ≥ 3 , 2, 1 and 0 types of geometric quality criteria. A grey segment represents the fraction of residues that are not modelled. The numeric value for each fraction is indicated below the corresponding segment, with a dot representing fractions $\leq 5\%$. The upper red bar (where present) indicates the fraction of residues that have poor fit to the electron density. The numeric value is given above the bar.

Mol	Chain	Length	Quality of chain
1	A	418	<div> <div>3%</div> <div>67%</div> <div>25%</div> <div>• •</div> </div>
2	B	394	<div> <div>9%</div> <div>34%</div> <div>22%</div> <div>•</div> <div>40%</div> </div>
3	C	372	<div> <div>%</div> <div>67%</div> <div>23%</div> <div>•</div> <div>8%</div> </div>
4	D	300	<div> <div>%</div> <div>69%</div> <div>23%</div> <div>•</div> <div>6%</div> </div>
5	E	178	<div> <div>%</div> <div>59%</div> <div>34%</div> <div>5%</div> <div>•</div> </div>

Continued on next page...

Continued from previous page...

Mol	Chain	Length	Quality of chain
6	F	168	 % 77% 22% ..
7	G	151	 7% 67% 19% 5% 9%

The following table lists non-polymeric compounds, carbohydrate monomers and non-standard residues in protein, DNA, RNA chains that are outliers for geometric or electron-density-fit criteria:

Mol	Type	Chain	Res	Chirality	Geometry	Clashes	Electron density
9	C69	A	1002	-	-	X	-

2 Entry composition

There are 11 unique types of molecules in this entry. The entry contains 14186 atoms, of which 0 are hydrogens and 0 are deuteriums.

In the tables below, the ZeroOcc column contains the number of atoms modelled with zero occupancy, the AltConf column contains the number of residues with at least one atom in alternate conformation and the Trace column contains the number of residues modelled with at most 2 atoms.

- Molecule 1 is a protein called Actin-related protein 3.

Mol	Chain	Residues	Atoms					ZeroOcc	AltConf	Trace
1	A	400	Total	C	N	O	S	0	0	0
			3198	2055	532	596	15			

- Molecule 2 is a protein called Actin-related protein 2.

Mol	Chain	Residues	Atoms					ZeroOcc	AltConf	Trace
2	B	236	Total	C	N	O	S	0	0	0
			1835	1181	308	340	6			

- Molecule 3 is a protein called Actin-related protein 2/3 complex subunit 1B.

Mol	Chain	Residues	Atoms					ZeroOcc	AltConf	Trace
3	C	341	Total	C	N	O	S	0	0	0
			2649	1681	464	485	19			

- Molecule 4 is a protein called Actin-related protein 2/3 complex subunit 2.

Mol	Chain	Residues	Atoms					ZeroOcc	AltConf	Trace
4	D	281	Total	C	N	O	S	0	0	0
			2264	1441	393	422	8			

- Molecule 5 is a protein called Actin-related protein 2/3 complex subunit 3.

Mol	Chain	Residues	Atoms					ZeroOcc	AltConf	Trace
5	E	174	Total	C	N	O	S	0	0	0
			1412	907	236	260	9			

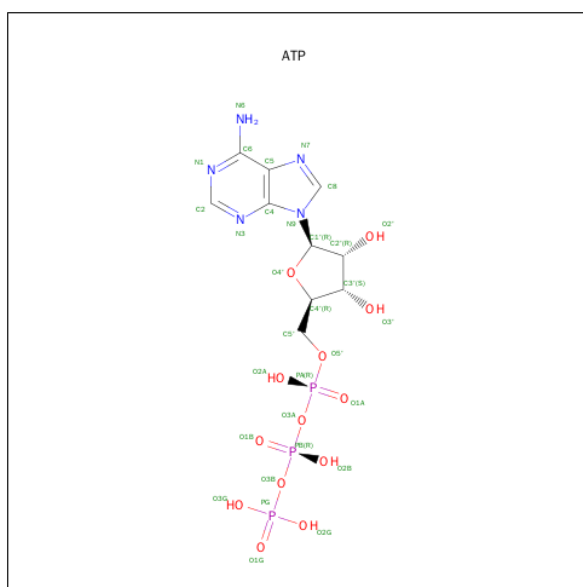
- Molecule 6 is a protein called Actin-related protein 2/3 complex subunit 4.

Mol	Chain	Residues	Atoms					ZeroOcc	AltConf	Trace
6	F	167	Total	C	N	O	S	0	0	0
			1371	875	239	248	9			

- Molecule 7 is a protein called Actin-related protein 2/3 complex subunit 5.

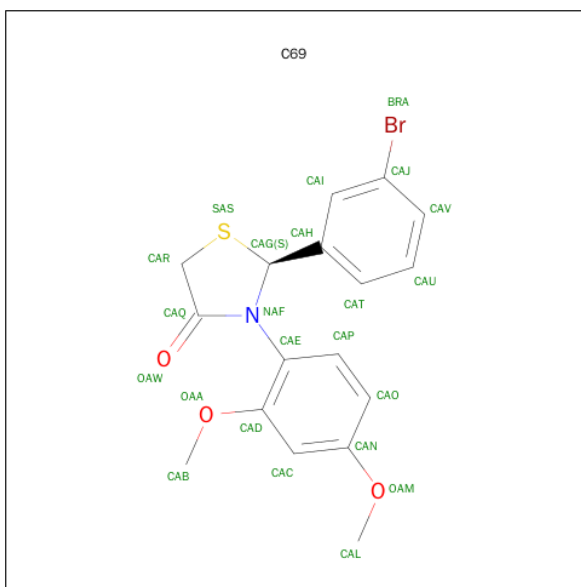
Mol	Chain	Residues	Atoms					ZeroOcc	AltConf	Trace
7	G	137	Total	C	N	O	S	0	0	0
			1045	654	183	205	3			

- Molecule 8 is ADENOSINE-5'-TRIPHOSPHATE (three-letter code: ATP) (formula: $C_{10}H_{16}N_5O_{13}P_3$).



Mol	Chain	Residues	Atoms					ZeroOcc	AltConf
8	A	1	Total	C	N	O	P	0	0
			31	10	5	13	3		
8	B	1	Total	C	N	O	P	0	0
			31	10	5	13	3		

- Molecule 9 is (2S)-2-(3-BROMOPHENYL)-3-(2,4-DIMETHOXYPHENYL)-1,3-THIAZOLIDIN-4-ONE (three-letter code: C69) (formula: $C_{17}H_{16}BrNO_3S$).



Mol	Chain	Residues	Atoms					ZeroOcc	AltConf
9	A	1	Total	Br	C	N	O	S	
			23	1	17	1	3	1	

- Molecule 10 is CALCIUM ION (three-letter code: CA) (formula: Ca).

Mol	Chain	Residues	Atoms		ZeroOcc	AltConf
10	B	1	Total	Ca		
			1	1	0	0
10	A	1	Total	Ca		
			1	1	0	0

- Molecule 11 is water.

Mol	Chain	Residues	Atoms		ZeroOcc	AltConf
11	A	57	Total	O		
			57	57	0	0
11	B	27	Total	O		
			27	27	0	0
11	C	77	Total	O		
			77	77	0	0
11	D	72	Total	O		
			72	72	0	0
11	E	23	Total	O		
			23	23	0	0
11	F	51	Total	O		
			51	51	0	0

Continued on next page...

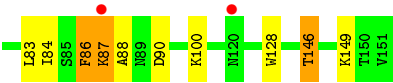
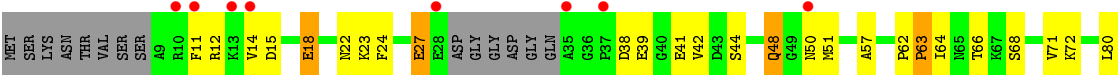
Continued from previous page...

Mol	Chain	Residues	Atoms		ZeroOcc	AltConf
11	G	18	Total	O	0	0
			18	18		

MET
T2
A3
T4
F5
R6
P7
Q28
E31
R32
K35
E45
R55
K58
S73
I82
E83
K84
I85
L86
C87
M91
F101
F102
Y112
F121
E124
Q125
M126
Y127
K128
H129
K130
I142
E145
I146
M149
S152
V153
R156
A157
S158



● Molecule 7: Actin-related protein 2/3 complex subunit 5



4 Data and refinement statistics

Property	Value	Source
Space group	P 21 21 21	Depositor
Cell constants a, b, c, α , β , γ	111.17Å 128.31Å 198.49Å 90.00° 90.00° 90.00°	Depositor
Resolution (Å)	20.00 – 2.50 49.62 – 2.50	Depositor EDS
% Data completeness (in resolution range)	(Not available) (20.00-2.50) 84.6 (49.62-2.50)	Depositor EDS
R_{merge}	(Not available)	Depositor
R_{sym}	(Not available)	Depositor
$\langle I/\sigma(I) \rangle$ ¹	2.51 (at 2.51Å)	Xtriage
Refinement program	CNS	Depositor
R, R_{free}	0.223 , 0.274 0.223 , 0.273	Depositor DCC
R_{free} test set	4700 reflections (5.94%)	DCC
Wilson B-factor (Å ²)	37.7	Xtriage
Anisotropy	0.240	Xtriage
Bulk solvent k_{sol} (e/Å ³), B_{sol} (Å ²)	0.32 , 36.4	EDS
Estimated twinning fraction	No twinning to report.	Xtriage
L-test for twinning ²	$\langle L \rangle = 0.49$, $\langle L^2 \rangle = 0.32$	Xtriage
Outliers	0 of 93950 reflections	Xtriage
F_o, F_c correlation	0.92	EDS
Total number of atoms	14186	wwPDB-VP
Average B, all atoms (Å ²)	43.0	wwPDB-VP

Xtriage's analysis on translational NCS is as follows: *The largest off-origin peak in the Patterson function is 2.43% of the height of the origin peak. No significant pseudotranslation is detected.*

¹Intensities estimated from amplitudes.

²Theoretical values of $\langle |L| \rangle$, $\langle L^2 \rangle$ for acentric reflections are 0.5, 0.375 respectively for untwinned datasets, and 0.333, 0.2 for perfectly twinned datasets.

5 Model quality [i](#)

5.1 Standard geometry [i](#)

Bond lengths and bond angles in the following residue types are not validated in this section: CA, ATP, C69

The Z score for a bond length (or angle) is the number of standard deviations the observed value is removed from the expected value. A bond length (or angle) with $|Z| > 5$ is considered an outlier worth inspection. RMSZ is the root-mean-square of all Z scores of the bond lengths (or angles).

Mol	Chain	Bond lengths		Bond angles	
		RMSZ	# Z >5	RMSZ	# Z >5
1	A	0.37	0/3279	0.61	0/4450
2	B	0.33	0/1866	0.59	0/2525
3	C	0.37	0/2718	0.65	0/3689
4	D	0.38	0/2312	0.59	0/3121
5	E	0.35	0/1446	0.60	1/1950 (0.1%)
6	F	0.40	0/1393	0.63	0/1868
7	G	0.35	0/1057	0.61	0/1421
All	All	0.37	0/14071	0.61	1/19024 (0.0%)

There are no bond length outliers.

All (1) bond angle outliers are listed below:

Mol	Chain	Res	Type	Atoms	Z	Observed(°)	Ideal(°)
5	E	17	GLY	N-CA-C	-5.42	99.56	113.10

There are no chirality outliers.

There are no planarity outliers.

5.2 Too-close contacts [i](#)

In the following table, the Non-H and H(model) columns list the number of non-hydrogen atoms and hydrogen atoms in the chain respectively. The H(added) column lists the number of hydrogen atoms added and optimized by MolProbity. The Clashes column lists the number of clashes within the asymmetric unit, whereas Symm-Clashes lists symmetry related clashes.

Mol	Chain	Non-H	H(model)	H(added)	Clashes	Symm-Clashes
1	A	3198	0	3143	120	0
2	B	1835	0	1859	102	0
3	C	2649	0	2604	85	0

Continued on next page...

Continued from previous page...

Mol	Chain	Non-H	H(model)	H(added)	Clashes	Symm-Clashes
4	D	2264	0	2230	64	0
5	E	1412	0	1414	64	0
6	F	1371	0	1410	26	0
7	G	1045	0	1059	29	0
8	A	31	0	12	3	0
8	B	31	0	12	2	0
9	A	23	0	16	9	0
10	A	1	0	0	0	0
10	B	1	0	0	0	0
11	A	57	0	0	2	0
11	B	27	0	0	1	0
11	C	77	0	0	6	0
11	D	72	0	0	2	0
11	E	23	0	0	3	0
11	F	51	0	0	1	0
11	G	18	0	0	1	0
All	All	14186	0	13759	478	0

The all-atom clashscore is defined as the number of clashes found per 1000 atoms (including hydrogen atoms). The all-atom clashscore for this structure is 17.

The worst 5 of 478 close contacts within the same asymmetric unit are listed below, sorted by their clash magnitude.

Atom-1	Atom-2	Interatomic distance (Å)	Clash overlap (Å)
3:C:17:ASN:HD21	3:C:21:THR:HG22	1.13	1.10
3:C:223:ASP:HB3	7:G:146:THR:HG21	1.44	1.00
6:F:4:THR:HG23	6:F:55:ARG:HE	1.22	1.00
1:A:115:PRO:HD3	9:A:1002:C69:H2	1.45	0.97
3:C:223:ASP:CB	7:G:146:THR:HG21	1.97	0.94

There are no symmetry-related clashes.

5.3 Torsion angles [i](#)

5.3.1 Protein backbone [i](#)

In the following table, the Percentiles column shows the percent Ramachandran outliers of the chain as a percentile score with respect to all X-ray entries followed by that with respect to entries of similar resolution.

The Analysed column shows the number of residues for which the backbone conformation was analysed, and the total number of residues.

Mol	Chain	Analysed	Favoured	Allowed	Outliers	Percentiles	
1	A	394/418 (94%)	367 (93%)	23 (6%)	4 (1%)	19	34
2	B	228/394 (58%)	205 (90%)	18 (8%)	5 (2%)	8	13
3	C	337/372 (91%)	314 (93%)	21 (6%)	2 (1%)	30	50
4	D	277/300 (92%)	266 (96%)	9 (3%)	2 (1%)	26	46
5	E	172/178 (97%)	160 (93%)	6 (4%)	6 (4%)	4	6
6	F	165/168 (98%)	157 (95%)	7 (4%)	1 (1%)	30	50
7	G	133/151 (88%)	117 (88%)	10 (8%)	6 (4%)	3	3
All	All	1706/1981 (86%)	1586 (93%)	94 (6%)	26 (2%)	13	22

5 of 26 Ramachandran outliers are listed below:

Mol	Chain	Res	Type
5	E	113	LEU
5	E	153	ASN
1	A	52	MET
2	B	171	GLU
2	B	178	LEU

5.3.2 Protein sidechains ⓘ

In the following table, the Percentiles column shows the percent sidechain outliers of the chain as a percentile score with respect to all X-ray entries followed by that with respect to entries of similar resolution.

The Analysed column shows the number of residues for which the sidechain conformation was analysed, and the total number of residues.

Mol	Chain	Analysed	Rotameric	Outliers	Percentiles	
1	A	349/363 (96%)	328 (94%)	21 (6%)	24	43
2	B	197/345 (57%)	183 (93%)	14 (7%)	18	34
3	C	290/313 (93%)	277 (96%)	13 (4%)	34	59
4	D	245/264 (93%)	236 (96%)	9 (4%)	41	68
5	E	155/159 (98%)	147 (95%)	8 (5%)	29	51
6	F	154/155 (99%)	150 (97%)	4 (3%)	54	81
7	G	112/123 (91%)	105 (94%)	7 (6%)	22	40

Continued on next page...

Continued from previous page...

Mol	Chain	Analysed	Rotameric	Outliers	Percentiles
All	All	1502/1722 (87%)	1426 (95%)	76 (5%)	29 52

5 of 76 residues with a non-rotameric sidechain are listed below:

Mol	Chain	Res	Type
2	B	341	LYS
3	C	179	ARG
7	G	27	GLU
3	C	9	GLU
3	C	107	ASN

Some sidechains can be flipped to improve hydrogen bonding and reduce clashes. 5 of 31 such sidechains are listed below:

Mol	Chain	Res	Type
3	C	33	HIS
3	C	65	ASN
6	F	125	GLN
3	C	40	ASN
3	C	107	ASN

5.3.3 RNA ⓘ

There are no RNA molecules in this entry.

5.4 Non-standard residues in protein, DNA, RNA chains ⓘ

There are no non-standard protein/DNA/RNA residues in this entry.

5.5 Carbohydrates ⓘ

There are no carbohydrates in this entry.

5.6 Ligand geometry ⓘ

Of 5 ligands modelled in this entry, 2 are monoatomic - leaving 3 for Mogul analysis.

In the following table, the Counts columns list the number of bonds (or angles) for which Mogul statistics could be retrieved, the number of bonds (or angles) that are observed in the model and the number of bonds (or angles) that are defined in the chemical component dictionary. The Link

column lists molecule types, if any, to which the group is linked. The Z score for a bond length (or angle) is the number of standard deviations the observed value is removed from the expected value. A bond length (or angle) with $|Z| > 2$ is considered an outlier worth inspection. RMSZ is the root-mean-square of all Z scores of the bond lengths (or angles).

Mol	Type	Chain	Res	Link	Bond lengths			Bond angles		
					Counts	RMSZ	# Z > 2	Counts	RMSZ	# Z > 2
8	ATP	A	1001	10	24,33,33	1.22	2 (8%)	31,52,52	2.42	5 (16%)
9	C69	A	1002	-	25,25,25	1.69	2 (8%)	34,35,35	2.47	8 (23%)
8	ATP	B	401	10	24,33,33	1.36	3 (12%)	31,52,52	2.87	13 (41%)

In the following table, the Chirals column lists the number of chiral outliers, the number of chiral centers analysed, the number of these observed in the model and the number defined in the chemical component dictionary. Similar counts are reported in the Torsion and Rings columns. '-' means no outliers of that kind were identified.

Mol	Type	Chain	Res	Link	Chirals	Torsions	Rings
8	ATP	A	1001	10	-	0/18/38/38	0/3/3/3
9	C69	A	1002	-	-	0/12/25/25	0/3/3/3
8	ATP	B	401	10	-	0/18/38/38	0/3/3/3

The worst 5 of 7 bond length outliers are listed below:

Mol	Chain	Res	Type	Atoms	Z	Observed(Å)	Ideal(Å)
9	A	1002	C69	CAE-NAF	-6.70	1.34	1.43
9	A	1002	C69	CAQ-NAF	-3.49	1.33	1.37
8	A	1001	ATP	O4'-C1'	2.03	1.43	1.41
8	B	401	ATP	O4'-C1'	2.43	1.44	1.41
8	B	401	ATP	PG-O1G	3.05	1.61	1.51

The worst 5 of 26 bond angle outliers are listed below:

Mol	Chain	Res	Type	Atoms	Z	Observed(°)	Ideal(°)
8	A	1001	ATP	N3-C2-N1	-10.85	120.58	128.89
8	B	401	ATP	N3-C2-N1	-10.59	120.78	128.89
9	A	1002	C69	CAQ-CAR-SAS	-7.04	101.74	107.69
9	A	1002	C69	CAB-OAA-CAD	-5.03	109.92	117.54
8	B	401	ATP	O3A-PA-O5'	-4.87	90.01	102.94

There are no chirality outliers.

There are no torsion outliers.

There are no ring outliers.

3 monomers are involved in 14 short contacts:

Mol	Chain	Res	Type	Clashes	Symm-Clashes
8	A	1001	ATP	3	0
9	A	1002	C69	9	0
8	B	401	ATP	2	0

5.7 Other polymers [i](#)

There are no such residues in this entry.

5.8 Polymer linkage issues [i](#)

There are no chain breaks in this entry.

6 Fit of model and data [i](#)

6.1 Protein, DNA and RNA chains [i](#)

In the following table, the column labelled ‘#RSRZ> 2’ contains the number (and percentage) of RSRZ outliers, followed by percent RSRZ outliers for the chain as percentile scores relative to all X-ray entries and entries of similar resolution. The OWAB column contains the minimum, median, 95th percentile and maximum values of the occupancy-weighted average B-factor per residue. The column labelled ‘Q< 0.9’ lists the number of (and percentage) of residues with an average occupancy less than 0.9.

Mol	Chain	Analysed	<RSRZ>	#RSRZ>2	OWAB(Å ²)	Q<0.9
1	A	400/418 (95%)	0.16	13 (3%) 50 55	20, 40, 74, 93	0
2	B	236/394 (59%)	0.65	36 (15%) 3 3	26, 55, 94, 99	0
3	C	341/372 (91%)	-0.11	2 (0%) 90 91	25, 35, 63, 81	0
4	D	281/300 (93%)	-0.20	3 (1%) 82 84	19, 37, 63, 98	0
5	E	174/178 (97%)	-0.04	2 (1%) 82 84	30, 45, 68, 90	0
6	F	167/168 (99%)	-0.18	2 (1%) 81 83	18, 31, 44, 78	0
7	G	137/151 (90%)	0.26	10 (7%) 18 20	26, 52, 84, 94	0
All	All	1736/1981 (87%)	0.07	68 (3%) 43 48	18, 39, 82, 99	0

The worst 5 of 68 RSRZ outliers are listed below:

Mol	Chain	Res	Type	RSRZ
1	A	51	VAL	8.0
2	B	114	MET	6.5
1	A	52	MET	5.9
2	B	109	LEU	5.6
2	B	360	VAL	5.3

6.2 Non-standard residues in protein, DNA, RNA chains [i](#)

There are no non-standard protein/DNA/RNA residues in this entry.

6.3 Carbohydrates [i](#)

There are no carbohydrates in this entry.

6.4 Ligands [i](#)

In the following table, the Atoms column lists the number of modelled atoms in the group and the number defined in the chemical component dictionary. LLDF column lists the quality of electron density of the group with respect to its neighbouring residues in protein, DNA or RNA chains. The B-factors column lists the minimum, median, 95th percentile and maximum values of B factors of atoms in the group. The column labelled 'Q< 0.9' lists the number of atoms with occupancy less than 0.9.

Mol	Type	Chain	Res	Atoms	RSCC	RSR	LLDF	B-factors(Å ²)	Q<0.9
9	C69	A	1002	23/23	0.95	0.19	1.05	44,46,51,52	0
8	ATP	A	1001	31/31	0.97	0.16	0.14	31,38,41,43	0
8	ATP	B	401	31/31	0.95	0.11	-0.92	35,39,52,54	0
10	CA	B	402	1/1	0.88	0.17	-	70,70,70,70	0
10	CA	A	1003	1/1	0.89	0.30	-	61,61,61,61	0

6.5 Other polymers [i](#)

There are no such residues in this entry.