



wwPDB X-ray Structure Validation Summary Report ⓘ

Jan 31, 2016 – 10:42 PM GMT

PDB ID : 1US1
Title : CRYSTAL STRUCTURE OF HUMAN VASCULAR ADHESION PROTEIN-1
Authors : Airene, T.T.; Nymalm, Y.; Kidron, H.; Soderholm, A.; Johnson, M.S.; Salmi-
nen, T.A.
Deposited on : 2003-11-17
Resolution : 2.90 Å(reported)

This is a wwPDB X-ray Structure Validation Summary Report for a publicly released PDB entry.
We welcome your comments at validation@mail.wwpdb.org
A user guide is available at
<http://wwpdb.org/validation/2016/XrayValidationReportHelp>
with specific help available everywhere you see the ⓘ symbol.

The following versions of software and data (see [references ⓘ](#)) were used in the production of this report:

MolProbity : 4.02b-467
Mogul : 1.7 (RC4), CSD as536be (2015)
Xtriage (Phenix) : 1.9-1692
EDS : rb-20026688
Percentile statistics : 20151230.v01 (using entries in the PDB archive December 30th 2015)
Refmac : 5.8.0135
CCP4 : 6.5.0
Ideal geometry (proteins) : Engh & Huber (2001)
Ideal geometry (DNA, RNA) : Parkinson et al. (1996)
Validation Pipeline (wwPDB-VP) : trunk26865

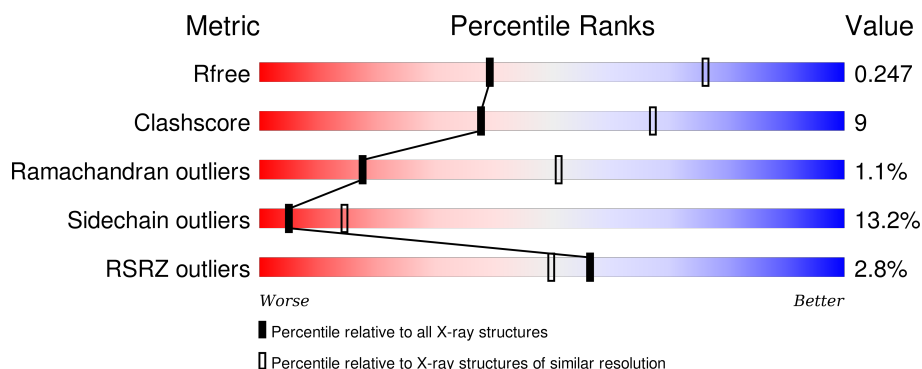
1 Overall quality at a glance

The following experimental techniques were used to determine the structure:

X-RAY DIFFRACTION

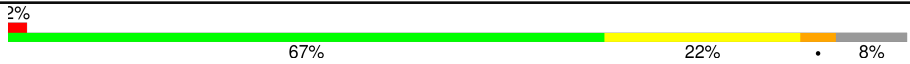

The reported resolution of this entry is 2.90 Å.

Percentile scores (ranging between 0-100) for global validation metrics of the entry are shown in the following graphic. The table shows the number of entries on which the scores are based.



Metric	Whole archive (#Entries)	Similar resolution (#Entries, resolution range(Å))
R_{free}	91344	1451 (2.90-2.90)
Clashscore	102246	1668 (2.90-2.90)
Ramachandran outliers	100387	1630 (2.90-2.90)
Sidechain outliers	100360	1632 (2.90-2.90)
RSRZ outliers	91569	1456 (2.90-2.90)

The table below summarises the geometric issues observed across the polymeric chains and their fit to the electron density. The red, orange, yellow and green segments on the lower bar indicate the fraction of residues that contain outliers for ≥ 3 , 2, 1 and 0 types of geometric quality criteria. A grey segment represents the fraction of residues that are not modelled. The numeric value for each fraction is indicated below the corresponding segment, with a dot representing fractions $\leq 5\%$. The upper red bar (where present) indicates the fraction of residues that have poor fit to the electron density. The numeric value is given above the bar.

Mol	Chain	Length	Quality of chain
1	A	763	
1	B	763	

2 Entry composition

There are 5 unique types of molecules in this entry. The entry contains 11153 atoms, of which 0 are hydrogens and 0 are deuteriums.

In the tables below, the ZeroOcc column contains the number of atoms modelled with zero occupancy, the AltConf column contains the number of residues with at least one atom in alternate conformation and the Trace column contains the number of residues modelled with at most 2 atoms.

- Molecule 1 is a protein called MEMBRANE COPPER AMINE OXIDASE.

Mol	Chain	Residues	Atoms					ZeroOcc	AltConf	Trace
1	A	704	Total	C	N	O	S	0	0	0
			5545	3560	953	1012	20			
1	B	699	Total	C	N	O	S	0	0	0
			5518	3543	950	1005	20			

- Molecule 2 is COPPER (II) ION (three-letter code: CU) (formula: Cu).

Mol	Chain	Residues	Atoms		ZeroOcc	AltConf
2	B	1	Total	Cu	0	0
			1	1		
2	A	1	Total	Cu	0	0
			1	1		

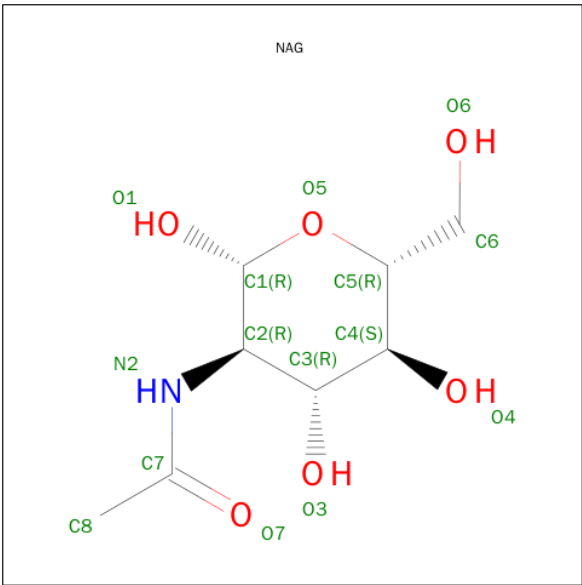
- Molecule 3 is CALCIUM ION (three-letter code: CA) (formula: Ca).

Mol	Chain	Residues	Atoms		ZeroOcc	AltConf
3	B	2	Total	Ca	0	0
			2	2		
3	A	2	Total	Ca	0	0
			2	2		

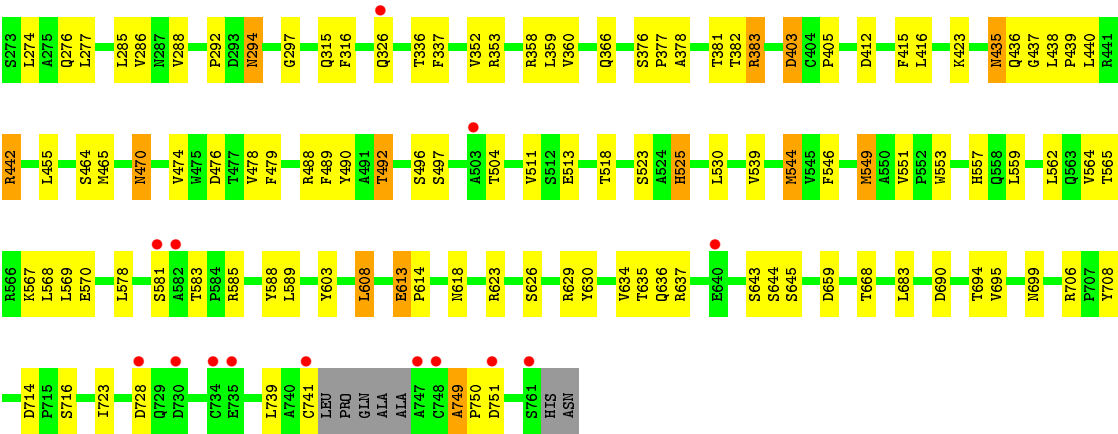
- Molecule 4 is a polymer of unknown type called SUGAR (2-MER).

Mol	Chain	Residues	Atoms				ZeroOcc	AltConf
4	A	2	Total	C	N	O	0	0
			28	16	2	10		
4	B	2	Total	C	N	O	0	0
			28	16	2	10		

- Molecule 5 is SUGAR (N-ACETYL-D-GLUCOSAMINE) (three-letter code: NAG) (formula: C₈H₁₅NO₆).



Mol	Chain	Residues	Atoms				ZeroOcc	AltConf
5	A	1	Total	C	N	O	0	0
			14	8	1	5		
5	B	1	Total	C	N	O	0	0
			14	8	1	5		



4 Data and refinement statistics

Property	Value	Source
Space group	P 65 2 2	Depositor
Cell constants a, b, c, α , β , γ	226.10 Å 226.10 Å 223.00 Å 90.00° 90.00° 120.00°	Depositor
Resolution (Å)	19.96 – 2.90 19.98 – 2.90	Depositor EDS
% Data completeness (in resolution range)	93.3 (19.96-2.90) 93.6 (19.98-2.90)	Depositor EDS
R_{merge}	0.12	Depositor
R_{sym}	(Not available)	Depositor
$\langle I/\sigma(I) \rangle$ ¹	5.60 (at 2.88 Å)	Xtriage
Refinement program	REFMAC 5.1.24	Depositor
R, R_{free}	0.241 , 0.267 0.224 , 0.247	Depositor DCC
R_{free} test set	3476 reflections (5.26%)	DCC
Wilson B-factor (Å ²)	44.4	Xtriage
Anisotropy	0.789	Xtriage
Bulk solvent k_{sol} (e/Å ³), B_{sol} (Å ²)	0.36 , 27.7	EDS
Estimated twinning fraction	No twinning to report.	Xtriage
L-test for twinning ²	$\langle L \rangle = 0.46$, $\langle L^2 \rangle = 0.29$	Xtriage
Outliers	1 of 69535 reflections (0.001%)	Xtriage
F_o, F_c correlation	0.91	EDS
Total number of atoms	11153	wwPDB-VP
Average B, all atoms (Å ²)	42.0	wwPDB-VP

Xtriage's analysis on translational NCS is as follows: *The largest off-origin peak in the Patterson function is 3.72% of the height of the origin peak. No significant pseudotranslation is detected.*

¹ Intensities estimated from amplitudes.

² Theoretical values of $\langle |L| \rangle$, $\langle L^2 \rangle$ for acentric reflections are 0.5, 0.375 respectively for untwinned datasets, and 0.333, 0.2 for perfectly twinned datasets.

5 Model quality [i](#)

5.1 Standard geometry [i](#)

Bond lengths and bond angles in the following residue types are not validated in this section: CA, TPQ, NAG, CU

The Z score for a bond length (or angle) is the number of standard deviations the observed value is removed from the expected value. A bond length (or angle) with $|Z| > 5$ is considered an outlier worth inspection. RMSZ is the root-mean-square of all Z scores of the bond lengths (or angles).

Mol	Chain	Bond lengths		Bond angles	
		RMSZ	# Z >5	RMSZ	# Z >5
1	A	0.94	4/5705 (0.1%)	1.00	19/7779 (0.2%)
1	B	0.91	2/5676 (0.0%)	0.99	16/7735 (0.2%)
All	All	0.93	6/11381 (0.1%)	1.00	35/15514 (0.2%)

Chiral center outliers are detected by calculating the chiral volume of a chiral center and verifying if the center is modelled as a planar moiety or with the opposite hand. A planarity outlier is detected by checking planarity of atoms in a peptide group, atoms in a mainchain group or atoms of a sidechain that are expected to be planar.

Mol	Chain	#Chirality outliers	#Planarity outliers
1	A	0	2
1	B	0	5
All	All	0	7

The worst 5 of 6 bond length outliers are listed below:

Mol	Chain	Res	Type	Atoms	Z	Observed(Å)	Ideal(Å)
1	A	592	ASN	CB-CG	6.80	1.66	1.51
1	B	95	CYS	CB-SG	-5.81	1.72	1.81
1	A	214	ALA	CA-CB	-5.70	1.40	1.52
1	A	689	GLU	CD-OE1	5.25	1.31	1.25
1	A	457	GLU	CD-OE1	5.08	1.31	1.25

The worst 5 of 35 bond angle outliers are listed below:

Mol	Chain	Res	Type	Atoms	Z	Observed(°)	Ideal(°)
1	A	383	ARG	NE-CZ-NH1	9.58	125.09	120.30
1	A	383	ARG	NE-CZ-NH2	-8.97	115.82	120.30
1	B	154	ASP	CB-CG-OD2	8.23	125.71	118.30
1	A	412	ASP	CB-CG-OD2	8.18	125.66	118.30

Continued on next page...

Continued from previous page...

Mol	Chain	Res	Type	Atoms	Z	Observed(°)	Ideal(°)
1	A	637	ARG	NE-CZ-NH2	-7.97	116.32	120.30

There are no chirality outliers.

5 of 7 planarity outliers are listed below:

Mol	Chain	Res	Type	Group
1	A	213	THR	Peptide
1	A	438	LEU	Peptide
1	B	213	THR	Peptide
1	B	57	SER	Peptide
1	B	94	ASN	Peptide

5.2 Too-close contacts

In the following table, the Non-H and H(model) columns list the number of non-hydrogen atoms and hydrogen atoms in the chain respectively. The H(added) column lists the number of hydrogen atoms added and optimized by MolProbity. The Clashes column lists the number of clashes within the asymmetric unit, whereas Symm-Clashes lists symmetry related clashes.

Mol	Chain	Non-H	H(model)	H(added)	Clashes	Symm-Clashes
1	A	5545	0	5293	119	0
1	B	5518	0	5270	105	0
2	A	1	0	0	0	0
2	B	1	0	0	0	0
3	A	2	0	0	0	0
3	B	2	0	0	0	0
4	A	28	0	25	1	0
4	B	28	0	25	0	0
5	A	14	0	13	0	0
5	B	14	0	13	0	0
All	All	11153	0	10639	200	0

The all-atom clashscore is defined as the number of clashes found per 1000 atoms (including hydrogen atoms). The all-atom clashscore for this structure is 9.

The worst 5 of 200 close contacts within the same asymmetric unit are listed below, sorted by their clash magnitude.

Atom-1	Atom-2	Interatomic distance (Å)	Clash overlap (Å)
1:A:621:MET:CE	1:A:621:MET:SD	2.01	1.48

Continued on next page...

Continued from previous page...

Atom-1	Atom-2	Interatomic distance (Å)	Clash overlap (Å)
1:A:571:MET:SD	1:A:571:MET:CE	2.05	1.44
1:B:549:MET:CE	1:B:549:MET:SD	2.05	1.44
1:A:441:ARG:HA	1:B:492:THR:HG21	1.56	0.86
1:A:500:LEU:HD22	1:A:510:GLN:HG3	1.61	0.82

There are no symmetry-related clashes.

5.3 Torsion angles [i](#)

5.3.1 Protein backbone [i](#)

In the following table, the Percentiles column shows the percent Ramachandran outliers of the chain as a percentile score with respect to all X-ray entries followed by that with respect to entries of similar resolution.

The Analysed column shows the number of residues for which the backbone conformation was analysed, and the total number of residues.

Mol	Chain	Analysed	Favoured	Allowed	Outliers	Percentiles	
1	A	699/763 (92%)	648 (93%)	42 (6%)	9 (1%)	15	46
1	B	692/763 (91%)	640 (92%)	46 (7%)	6 (1%)	21	57
All	All	1391/1526 (91%)	1288 (93%)	88 (6%)	15 (1%)	17	51

5 of 15 Ramachandran outliers are listed below:

Mol	Chain	Res	Type
1	A	214	ALA
1	A	746	ALA
1	A	748	CYS
1	B	214	ALA
1	B	749	ALA

5.3.2 Protein sidechains [i](#)

In the following table, the Percentiles column shows the percent sidechain outliers of the chain as a percentile score with respect to all X-ray entries followed by that with respect to entries of similar resolution.

The Analysed column shows the number of residues for which the sidechain conformation was analysed, and the total number of residues.

Mol	Chain	Analysed	Rotameric	Outliers	Percentiles	
1	A	583/634 (92%)	500 (86%)	83 (14%)	4	12
1	B	581/634 (92%)	510 (88%)	71 (12%)	6	18
All	All	1164/1268 (92%)	1010 (87%)	154 (13%)	5	14

5 of 154 residues with a non-rotameric sidechain are listed below:

Mol	Chain	Res	Type
1	A	617	GLN
1	B	95	CYS
1	B	570	GLU
1	A	625	PHE
1	A	713	GLU

Some sidechains can be flipped to improve hydrogen bonding and reduce clashes. 5 of 29 such sidechains are listed below:

Mol	Chain	Res	Type
1	A	537	ASN
1	A	699	ASN
1	B	436	GLN
1	A	617	GLN
1	B	94	ASN

5.3.3 RNA ⓘ

There are no RNA molecules in this entry.

5.4 Non-standard residues in protein, DNA, RNA chains ⓘ

2 non-standard protein/DNA/RNA residues are modelled in this entry.

In the following table, the Counts columns list the number of bonds (or angles) for which Mogul statistics could be retrieved, the number of bonds (or angles) that are observed in the model and the number of bonds (or angles) that are defined in the chemical component dictionary. The Link column lists molecule types, if any, to which the group is linked. The Z score for a bond length (or angle) is the number of standard deviations the observed value is removed from the expected value. A bond length (or angle) with $|Z| > 2$ is considered an outlier worth inspection. RMSZ is the root-mean-square of all Z scores of the bond lengths (or angles).

Mol	Type	Chain	Res	Link	Bond lengths			Bond angles		
					Counts	RMSZ	$\# Z > 2$	Counts	RMSZ	$\# Z > 2$
1	TPQ	A	471	1,2	13,14,15	2.62	4 (30%)	15,19,21	2.54	6 (40%)

Mol	Type	Chain	Res	Link	Bond lengths			Bond angles		
					Counts	RMSZ	# Z > 2	Counts	RMSZ	# Z > 2
1	TPQ	B	471	1,2	13,14,15	3.01	5 (38%)	15,19,21	3.05	7 (46%)

In the following table, the Chirals column lists the number of chiral outliers, the number of chiral centers analysed, the number of these observed in the model and the number defined in the chemical component dictionary. Similar counts are reported in the Torsion and Rings columns. '-' means no outliers of that kind were identified.

Mol	Type	Chain	Res	Link	Chirals	Torsions	Rings
1	TPQ	A	471	1,2	-	0/4/22/24	0/1/1/1
1	TPQ	B	471	1,2	-	0/4/22/24	0/1/1/1

The worst 5 of 9 bond length outliers are listed below:

Mol	Chain	Res	Type	Atoms	Z	Observed(Å)	Ideal(Å)
1	B	471	TPQ	C1-C2	2.06	1.52	1.49
1	A	471	TPQ	O2-C2	3.39	1.34	1.24
1	A	471	TPQ	C6-C1	3.41	1.43	1.34
1	A	471	TPQ	O5-C5	3.59	1.34	1.24
1	B	471	TPQ	O2-C2	3.72	1.34	1.24

The worst 5 of 13 bond angle outliers are listed below:

Mol	Chain	Res	Type	Atoms	Z	Observed(°)	Ideal(°)
1	A	471	TPQ	C3-C4-C5	-4.91	116.05	121.18
1	A	471	TPQ	O2-C2-C1	-4.25	117.14	120.85
1	B	471	TPQ	C3-C4-C5	-4.21	116.78	121.18
1	A	471	TPQ	CA-CB-C1	-4.09	105.42	113.63
1	A	471	TPQ	O-C-CA	-3.37	116.71	125.49

There are no chirality outliers.

There are no torsion outliers.

There are no ring outliers.

No monomer is involved in short contacts.

5.5 Carbohydrates [i](#)

4 carbohydrates are modelled in this entry.

In the following table, the Counts columns list the number of bonds (or angles) for which Mogul statistics could be retrieved, the number of bonds (or angles) that are observed in the model and

the number of bonds (or angles) that are defined in the chemical component dictionary. The Link column lists molecule types, if any, to which the group is linked. The Z score for a bond length (or angle) is the number of standard deviations the observed value is removed from the expected value. A bond length (or angle) with $|Z| > 2$ is considered an outlier worth inspection. RMSZ is the root-mean-square of all Z scores of the bond lengths (or angles).

Mol	Type	Chain	Res	Link	Bond lengths			Bond angles		
					Counts	RMSZ	# Z > 2	Counts	RMSZ	# Z > 2
4	NAG	A	1765	1,4	14,14,15	0.58	0	15,19,21	2.44	4 (26%)
4	NAG	A	1766	4	14,14,15	1.01	0	15,19,21	2.68	9 (60%)
4	NAG	B	1765	1,4	14,14,15	0.52	0	15,19,21	1.81	5 (33%)
4	NAG	B	1766	4	14,14,15	0.77	1 (7%)	15,19,21	1.85	3 (20%)

In the following table, the Chirals column lists the number of chiral outliers, the number of chiral centers analysed, the number of these observed in the model and the number defined in the chemical component dictionary. Similar counts are reported in the Torsion and Rings columns. '-' means no outliers of that kind were identified.

Mol	Type	Chain	Res	Link	Chirals	Torsions	Rings
4	NAG	A	1765	1,4	-	0/6/23/26	0/1/1/1
4	NAG	A	1766	4	-	0/6/23/26	0/1/1/1
4	NAG	B	1765	1,4	-	0/6/23/26	0/1/1/1
4	NAG	B	1766	4	-	0/6/23/26	0/1/1/1

All (1) bond length outliers are listed below:

Mol	Chain	Res	Type	Atoms	Z	Observed(Å)	Ideal(Å)
4	B	1766	NAG	C3-C2	2.09	1.57	1.52

The worst 5 of 21 bond angle outliers are listed below:

Mol	Chain	Res	Type	Atoms	Z	Observed(°)	Ideal(°)
4	A	1766	NAG	O7-C7-C8	-4.98	112.93	122.06
4	A	1766	NAG	C3-C4-C5	-3.77	103.63	110.20
4	B	1765	NAG	O3-C3-C2	-3.19	102.79	109.11
4	A	1765	NAG	C6-C5-C4	-2.66	106.45	113.02
4	B	1765	NAG	O7-C7-C8	-2.15	118.12	122.06

There are no chirality outliers.

There are no torsion outliers.

There are no ring outliers.

1 monomer is involved in 1 short contact:

Mol	Chain	Res	Type	Clashes	Symm-Clashes
4	A	1765	NAG	1	0

5.6 Ligand geometry

Of 8 ligands modelled in this entry, 6 are monoatomic - leaving 2 for Mogul analysis.

In the following table, the Counts columns list the number of bonds (or angles) for which Mogul statistics could be retrieved, the number of bonds (or angles) that are observed in the model and the number of bonds (or angles) that are defined in the chemical component dictionary. The Link column lists molecule types, if any, to which the group is linked. The Z score for a bond length (or angle) is the number of standard deviations the observed value is removed from the expected value. A bond length (or angle) with $|Z| > 2$ is considered an outlier worth inspection. RMSZ is the root-mean-square of all Z scores of the bond lengths (or angles).

Mol	Type	Chain	Res	Link	Bond lengths			Bond angles		
					Counts	RMSZ	$\# Z > 2$	Counts	RMSZ	$\# Z > 2$
5	NAG	A	1767	1	14,14,15	0.82	0	15,19,21	2.15	4 (26%)
5	NAG	B	1767	1	14,14,15	1.10	0	15,19,21	1.87	6 (40%)

In the following table, the Chirals column lists the number of chiral outliers, the number of chiral centers analysed, the number of these observed in the model and the number defined in the chemical component dictionary. Similar counts are reported in the Torsion and Rings columns. '-' means no outliers of that kind were identified.

Mol	Type	Chain	Res	Link	Chirals	Torsions	Rings
5	NAG	A	1767	1	-	0/6/23/26	0/1/1/1
5	NAG	B	1767	1	-	0/6/23/26	0/1/1/1

There are no bond length outliers.

The worst 5 of 10 bond angle outliers are listed below:

Mol	Chain	Res	Type	Atoms	Z	Observed(°)	Ideal(°)
5	A	1767	NAG	O7-C7-C8	-3.62	115.41	122.06
5	A	1767	NAG	C4-C3-C2	-3.51	105.78	111.23
5	B	1767	NAG	C2-N2-C7	2.19	125.85	123.04
5	B	1767	NAG	O4-C4-C3	2.26	115.42	110.34
5	A	1767	NAG	C3-C2-N2	2.38	116.27	110.56

There are no chirality outliers.

There are no torsion outliers.

There are no ring outliers.

No monomer is involved in short contacts.

5.7 Other polymers [i](#)

There are no such residues in this entry.

5.8 Polymer linkage issues [i](#)

There are no chain breaks in this entry.

6 Fit of model and data [i](#)

6.1 Protein, DNA and RNA chains [i](#)

In the following table, the column labelled ‘#RSRZ> 2’ contains the number (and percentage) of RSRZ outliers, followed by percent RSRZ outliers for the chain as percentile scores relative to all X-ray entries and entries of similar resolution. The OWAB column contains the minimum, median, 95th percentile and maximum values of the occupancy-weighted average B-factor per residue. The column labelled ‘Q< 0.9’ lists the number of (and percentage) of residues with an average occupancy less than 0.9.

Mol	Chain	Analysed	<RSRZ>	#RSRZ>2	OWAB(Å ²)	Q<0.9
1	A	703/763 (92%)	-0.25	15 (2%) 67 62	27, 41, 58, 82	0
1	B	698/763 (91%)	-0.25	24 (3%) 49 41	26, 41, 58, 79	0
All	All	1401/1526 (91%)	-0.25	39 (2%) 56 50	26, 41, 58, 82	0

The worst 5 of 39 RSRZ outliers are listed below:

Mol	Chain	Res	Type	RSRZ
1	B	747	ALA	5.2
1	B	735	GLU	4.2
1	B	81	PRO	3.8
1	B	748	CYS	3.8
1	A	81	PRO	3.5

6.2 Non-standard residues in protein, DNA, RNA chains [i](#)

In the following table, the Atoms column lists the number of modelled atoms in the group and the number defined in the chemical component dictionary. LLDF column lists the quality of electron density of the group with respect to its neighbouring residues in protein, DNA or RNA chains. The B-factors column lists the minimum, median, 95th percentile and maximum values of B factors of atoms in the group. The column labelled ‘Q< 0.9’ lists the number of atoms with occupancy less than 0.9.

Mol	Type	Chain	Res	Atoms	RSCC	RSR	LLDF	B-factors(Å ²)	Q<0.9
1	TPQ	A	471	14/15	0.95	0.14	-	29,37,43,43	0
1	TPQ	B	471	14/15	0.90	0.17	-	29,35,42,42	0

6.3 Carbohydrates [i](#)

In the following table, the Atoms column lists the number of modelled atoms in the group and the number defined in the chemical component dictionary. LLDF column lists the quality of electron

density of the group with respect to its neighbouring residues in protein, DNA or RNA chains. The B-factors column lists the minimum, median, 95th percentile and maximum values of B factors of atoms in the group. The column labelled 'Q< 0.9' lists the number of atoms with occupancy less than 0.9.

Mol	Type	Chain	Res	Atoms	RSCC	RSR	LLDF	B-factors(Å ²)	Q<0.9
4	NAG	A	1765	14/15	0.93	0.17	-1.19	46,49,51,55	0
4	NAG	B	1765	14/15	0.95	0.11	-1.85	45,48,51,55	0
4	NAG	B	1766	14/15	0.83	0.31	-	58,61,64,66	0
4	NAG	A	1766	14/15	0.79	0.29	-	57,59,64,65	0

6.4 Ligands [i](#)

In the following table, the Atoms column lists the number of modelled atoms in the group and the number defined in the chemical component dictionary. LLDF column lists the quality of electron density of the group with respect to its neighbouring residues in protein, DNA or RNA chains. The B-factors column lists the minimum, median, 95th percentile and maximum values of B factors of atoms in the group. The column labelled 'Q< 0.9' lists the number of atoms with occupancy less than 0.9.

Mol	Type	Chain	Res	Atoms	RSCC	RSR	LLDF	B-factors(Å ²)	Q<0.9
5	NAG	B	1767	14/15	0.84	0.28	0.64	61,64,66,66	0
5	NAG	A	1767	14/15	0.88	0.28	0.20	61,64,65,65	0
3	CA	B	1763	1/1	0.96	0.12	-0.99	35,35,35,35	0
3	CA	A	1763	1/1	0.93	0.10	-1.76	33,33,33,33	0
3	CA	A	1764	1/1	0.96	0.12	-2.49	52,52,52,52	0
3	CA	B	1764	1/1	0.95	0.05	-3.90	48,48,48,48	0
2	CU	B	1762	1/1	0.99	0.05	-	38,38,38,38	0
2	CU	A	1762	1/1	0.98	0.07	-	35,35,35,35	0

6.5 Other polymers [i](#)

There are no such residues in this entry.