



Full wwPDB X-ray Structure Validation Report ⓘ

Jan 31, 2016 – 10:43 PM GMT

PDB ID : 1UYH
Title : HUMAN HSP90-ALPHA WITH 9-BUTYL-8-(2,5-DIMETHOXY-BENZYL)-
2-FLUORO-9H-PURIN-6-YLAMINE
Authors : Wright, L.; Barril, X.; Dymock, B.; Sheridan, L.; Surgenor, A.; Beswick, M.;
Drysdale, M.; Collier, A.; Massey, A.; Davies, N.; Fink, A.; Fromont, C.;
Aherne, W.; Boxall, K.; Sharp, S.; Workman, P.; Hubbard, R.E.
Deposited on : 2004-03-02
Resolution : 2.20 Å(reported)

This is a Full wwPDB X-ray Structure Validation Report for a publicly released PDB entry.
We welcome your comments at validation@mail.wwpdb.org
A user guide is available at
<http://wwpdb.org/validation/2016/XrayValidationReportHelp>
with specific help available everywhere you see the ⓘ symbol.

The following versions of software and data (see [references ⓘ](#)) were used in the production of this report:

MolProbity : 4.02b-467
Mogul : 1.7 (RC4), CSD as536be (2015)
Xtriage (Phenix) : 1.9-1692
EDS : rb-20026688
Percentile statistics : 20151230.v01 (using entries in the PDB archive December 30th 2015)
Refmac : 5.8.0135
CCP4 : 6.5.0
Ideal geometry (proteins) : Engh & Huber (2001)
Ideal geometry (DNA, RNA) : Parkinson et al. (1996)
Validation Pipeline (wwPDB-VP) : trunk26865

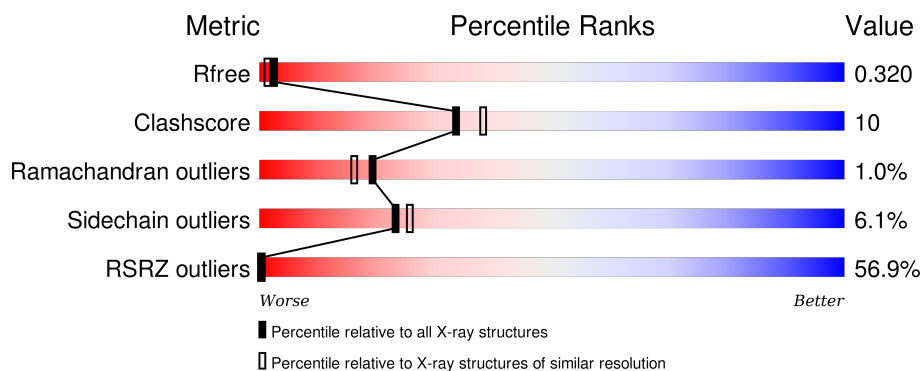
1 Overall quality at a glance

The following experimental techniques were used to determine the structure:

X-RAY DIFFRACTION

The reported resolution of this entry is 2.20 Å.

Percentile scores (ranging between 0-100) for global validation metrics of the entry are shown in the following graphic. The table shows the number of entries on which the scores are based.



Metric	Whole archive (#Entries)	Similar resolution (#Entries, resolution range(Å))
R_{free}	91344	3774 (2.20-2.20)
Clashscore	102246	4477 (2.20-2.20)
Ramachandran outliers	100387	4404 (2.20-2.20)
Sidechain outliers	100360	4405 (2.20-2.20)
RSRZ outliers	91569	3781 (2.20-2.20)

The table below summarises the geometric issues observed across the polymeric chains and their fit to the electron density. The red, orange, yellow and green segments on the lower bar indicate the fraction of residues that contain outliers for ≥ 3 , 2, 1 and 0 types of geometric quality criteria. A grey segment represents the fraction of residues that are not modelled. The numeric value for each fraction is indicated below the corresponding segment, with a dot representing fractions $\leq 5\%$. The upper red bar (where present) indicates the fraction of residues that have poor fit to the electron density. The numeric value is given above the bar.

Mol	Chain	Length	Quality of chain
1	A	236	

2 Entry composition [i](#)

There are 3 unique types of molecules in this entry. The entry contains 1900 atoms, of which 0 are hydrogens and 0 are deuteriums.

In the tables below, the ZeroOcc column contains the number of atoms modelled with zero occupancy, the AltConf column contains the number of residues with at least one atom in alternate conformation and the Trace column contains the number of residues modelled with at most 2 atoms.

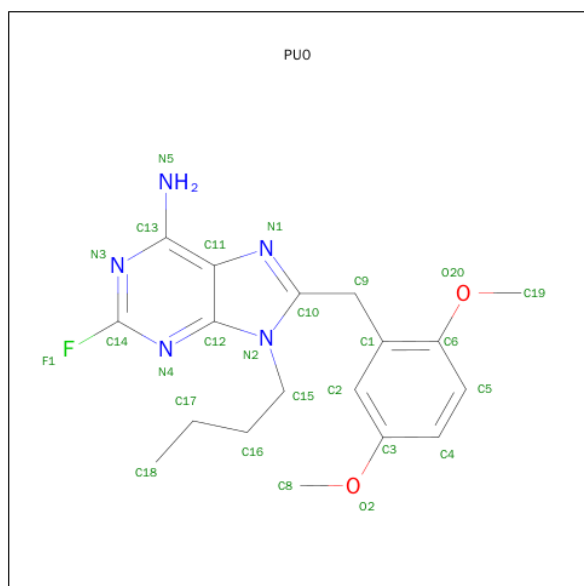
- Molecule 1 is a protein called HEAT SHOCK PROTEIN HSP 90-ALPHA.

Mol	Chain	Residues	Atoms					ZeroOcc	AltConf	Trace
1	A	209	Total	C	N	O	S	0	1	1
			1637	1039	270	323	5			

There is a discrepancy between the modelled and reference sequences:

Chain	Residue	Modelled	Actual	Comment	Reference
A	63	SER	THR	CONFLICT	UNP P07900

- Molecule 2 is 9-BUTYL-8-(2,5-DIMETHOXY-BENZYL)-2-FLUORO-9H-PURIN-6-YLAMINE (three-letter code: PU0) (formula: $C_{18}H_{22}FN_5O_2$).



Mol	Chain	Residues	Atoms					ZeroOcc	AltConf
2	A	1	Total	C	F	N	O	0	0
			26	18	1	5	2		

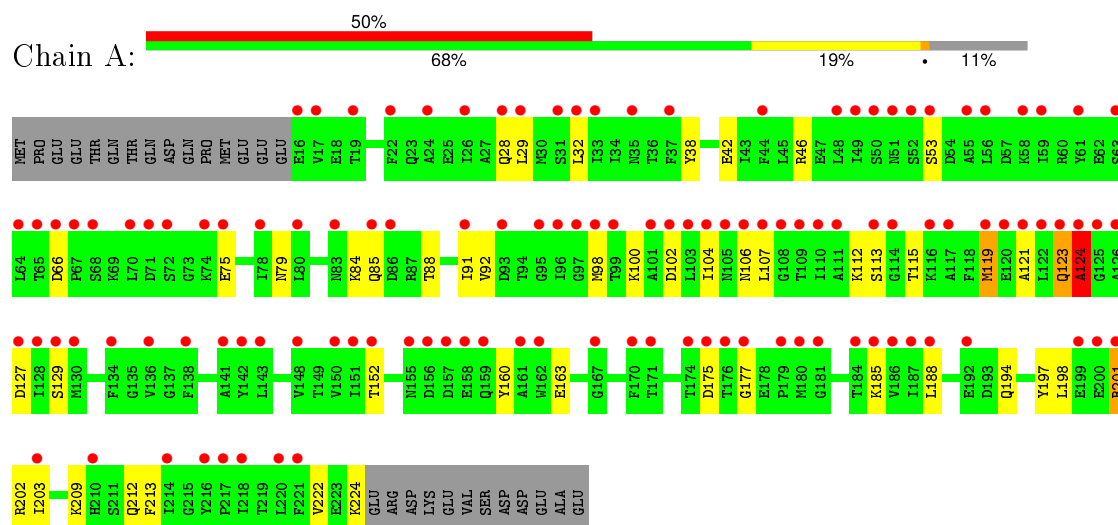
- Molecule 3 is water.

Mol	Chain	Residues	Atoms		ZeroOcc	AltConf
3	A	237	Total 237	O 237	0	0

3 Residue-property plots [i](#)

These plots are drawn for all protein, RNA and DNA chains in the entry. The first graphic for a chain summarises the proportions of errors displayed in the second graphic. The second graphic shows the sequence view annotated by issues in geometry and electron density. Residues are color-coded according to the number of geometric quality criteria for which they contain at least one outlier: green = 0, yellow = 1, orange = 2 and red = 3 or more. A red dot above a residue indicates a poor fit to the electron density ($RSRZ > 2$). Stretches of 2 or more consecutive residues without any outlier are shown as a green connector. Residues present in the sample, but not in the model, are shown in grey.

- Molecule 1: HEAT SHOCK PROTEIN HSP 90-ALPHA



4 Data and refinement statistics

Property	Value	Source
Space group	I 2 2 2	Depositor
Cell constants a, b, c, α , β , γ	66.50Å 90.41Å 98.66Å 90.00° 90.00° 90.00°	Depositor
Resolution (Å)	65.94 – 2.20 29.75 – 2.18	Depositor EDS
% Data completeness (in resolution range)	93.5 (65.94-2.20) 95.3 (29.75-2.18)	Depositor EDS
R_{merge}	0.05	Depositor
R_{sym}	(Not available)	Depositor
$\langle I/\sigma(I) \rangle$ ¹	2.65 (at 2.18Å)	Xtriage
Refinement program	REFMAC 5.1.19	Depositor
R, R_{free}	0.264 , 0.326 0.310 , 0.320	Depositor DCC
R_{free} test set	741 reflections (5.25%)	DCC
Wilson B-factor (Å ²)	30.4	Xtriage
Anisotropy	0.170	Xtriage
Bulk solvent k_{sol} (e/Å ³), B_{sol} (Å ²)	0.29 , 52.4	EDS
Estimated twinning fraction	No twinning to report.	Xtriage
L-test for twinning ²	$\langle L \rangle = 0.49$, $\langle L^2 \rangle = 0.33$	Xtriage
Outliers	0 of 28806 reflections	Xtriage
F_o, F_c correlation	0.87	EDS
Total number of atoms	1900	wwPDB-VP
Average B, all atoms (Å ²)	70.0	wwPDB-VP

Xtriage's analysis on translational NCS is as follows: *The largest off-origin peak in the Patterson function is 8.11% of the height of the origin peak. No significant pseudotranslation is detected.*

¹Intensities estimated from amplitudes.

²Theoretical values of $\langle |L| \rangle$, $\langle L^2 \rangle$ for acentric reflections are 0.5, 0.375 respectively for untwinned datasets, and 0.333, 0.2 for perfectly twinned datasets.

5 Model quality [i](#)

5.1 Standard geometry [i](#)

Bond lengths and bond angles in the following residue types are not validated in this section: PU0

The Z score for a bond length (or angle) is the number of standard deviations the observed value is removed from the expected value. A bond length (or angle) with $|Z| > 5$ is considered an outlier worth inspection. RMSZ is the root-mean-square of all Z scores of the bond lengths (or angles).

Mol	Chain	Bond lengths		Bond angles	
		RMSZ	$\# Z > 5$	RMSZ	$\# Z > 5$
1	A	0.82	0/1670	0.94	4/2253 (0.2%)

There are no bond length outliers.

All (4) bond angle outliers are listed below:

Mol	Chain	Res	Type	Atoms	Z	Observed(°)	Ideal(°)
1	A	102	ASP	CB-CG-OD2	5.84	123.56	118.30
1	A	66	ASP	CB-CG-OD2	5.42	123.18	118.30
1	A	124	ALA	N-CA-C	-5.17	97.05	111.00
1	A	175	ASP	CB-CG-OD2	5.03	122.82	118.30

There are no chirality outliers.

There are no planarity outliers.

5.2 Too-close contacts [i](#)

In the following table, the Non-H and H(model) columns list the number of non-hydrogen atoms and hydrogen atoms in the chain respectively. The H(added) column lists the number of hydrogen atoms added and optimized by MolProbity. The Clashes column lists the number of clashes within the asymmetric unit, whereas Symm-Clashes lists symmetry related clashes.

Mol	Chain	Non-H	H(model)	H(added)	Clashes	Symm-Clashes
1	A	1637	0	1633	34	0
2	A	26	0	22	0	0
3	A	237	0	0	8	0
All	All	1900	0	1655	34	0

The all-atom clashscore is defined as the number of clashes found per 1000 atoms (including hydrogen atoms). The all-atom clashscore for this structure is 10.

All (34) close contacts within the same asymmetric unit are listed below, sorted by their clash magnitude.

Atom-1	Atom-2	Interatomic distance (Å)	Clash overlap (Å)
1:A:28:GLN:HG2	1:A:119:MET:HE1	1.49	0.93
1:A:163:GLU:OE1	3:A:2172:HOH:O	2.11	0.68
1:A:121:ALA:C	1:A:123:GLN:H	1.98	0.67
1:A:121:ALA:C	1:A:123:GLN:N	2.54	0.59
1:A:224:LYS:N	3:A:2234:HOH:O	2.35	0.58
1:A:121:ALA:O	1:A:123:GLN:N	2.36	0.58
1:A:212:GLN:HG3	1:A:213:PHE:CE2	2.41	0.56
1:A:42:GLU:OE1	1:A:202:ARG:NH2	2.34	0.55
1:A:88:THR:HA	1:A:188:LEU:O	2.06	0.55
1:A:106:ASN:ND2	3:A:2127:HOH:O	1.64	0.55
1:A:197:TYR:O	1:A:203[B]:ILE:HD11	2.07	0.54
1:A:92:VAL:HG22	1:A:185:LYS:HG2	1.89	0.54
1:A:84:LYS:O	3:A:2103:HOH:O	2.18	0.53
1:A:123:GLN:O	1:A:124:ALA:HB2	2.09	0.52
1:A:224:LYS:N	3:A:2235:HOH:O	2.44	0.51
1:A:91:ILE:HD12	1:A:91:ILE:N	2.26	0.51
1:A:98:MET:HB2	1:A:152:THR:HG21	1.94	0.50
1:A:32:LEU:HD22	1:A:119:MET:CE	2.43	0.49
1:A:124:ALA:HB3	3:A:2135:HOH:O	2.12	0.49
1:A:53:SER:OG	3:A:2055:HOH:O	2.20	0.48
1:A:38:TYR:OH	1:A:129:SER:HB3	2.15	0.47
1:A:84:LYS:HA	1:A:198:LEU:HD13	1.96	0.47
1:A:212:GLN:CG	1:A:213:PHE:CD2	2.99	0.45
1:A:201:ARG:HD3	3:A:2206:HOH:O	2.17	0.44
1:A:79:ASN:HB2	1:A:92:VAL:HB	2.00	0.43
1:A:123:GLN:O	1:A:124:ALA:CB	2.66	0.43
1:A:100:LYS:HE2	1:A:104:ILE:HD11	2.01	0.43
1:A:194:GLN:HE21	1:A:197:TYR:HE2	1.65	0.43
1:A:212:GLN:HG2	1:A:213:PHE:CD2	2.54	0.42
1:A:29:LEU:HB2	1:A:115:THR:HG23	2.01	0.42
1:A:98:MET:SD	1:A:107:LEU:HD11	2.59	0.42
1:A:32:LEU:HD22	1:A:119:MET:HE2	2.01	0.41
1:A:212:GLN:HG3	1:A:213:PHE:CD2	2.55	0.40
1:A:100:LYS:HG3	1:A:160:TYR:CE1	2.55	0.40

There are no symmetry-related clashes.

5.3 Torsion angles [i](#)

5.3.1 Protein backbone [i](#)

In the following table, the Percentiles column shows the percent Ramachandran outliers of the chain as a percentile score with respect to all X-ray entries followed by that with respect to entries of similar resolution.

The Analysed column shows the number of residues for which the backbone conformation was analysed, and the total number of residues.

Mol	Chain	Analysed	Favoured	Allowed	Outliers	Percentiles	
1	A	208/236 (88%)	194 (93%)	12 (6%)	2 (1%)	19	16

All (2) Ramachandran outliers are listed below:

Mol	Chain	Res	Type
1	A	124	ALA
1	A	177	GLY

5.3.2 Protein sidechains [i](#)

In the following table, the Percentiles column shows the percent sidechain outliers of the chain as a percentile score with respect to all X-ray entries followed by that with respect to entries of similar resolution.

The Analysed column shows the number of residues for which the sidechain conformation was analysed, and the total number of residues.

Mol	Chain	Analysed	Rotameric	Outliers	Percentiles	
1	A	180/206 (87%)	169 (94%)	11 (6%)	23	26

All (11) residues with a non-rotameric sidechain are listed below:

Mol	Chain	Res	Type
1	A	46	ARG
1	A	75	GLU
1	A	85	GLN
1	A	112	LYS
1	A	113	SER
1	A	119	MET
1	A	123	GLN
1	A	127	ASP
1	A	201	ARG

Continued on next page...

Continued from previous page...

Mol	Chain	Res	Type
1	A	209	LYS
1	A	222	VAL

Some sidechains can be flipped to improve hydrogen bonding and reduce clashes. All (2) such sidechains are listed below:

Mol	Chain	Res	Type
1	A	79	ASN
1	A	194	GLN

5.3.3 RNA [i](#)

There are no RNA molecules in this entry.

5.4 Non-standard residues in protein, DNA, RNA chains [i](#)

There are no non-standard protein/DNA/RNA residues in this entry.

5.5 Carbohydrates [i](#)

There are no carbohydrates in this entry.

5.6 Ligand geometry [i](#)

1 ligand is modelled in this entry.

In the following table, the Counts columns list the number of bonds (or angles) for which Mogul statistics could be retrieved, the number of bonds (or angles) that are observed in the model and the number of bonds (or angles) that are defined in the chemical component dictionary. The Link column lists molecule types, if any, to which the group is linked. The Z score for a bond length (or angle) is the number of standard deviations the observed value is removed from the expected value. A bond length (or angle) with $|Z| > 2$ is considered an outlier worth inspection. RMSZ is the root-mean-square of all Z scores of the bond lengths (or angles).

Mol	Type	Chain	Res	Link	Bond lengths			Bond angles		
					Counts	RMSZ	$\# Z > 2$	Counts	RMSZ	$\# Z > 2$
2	PU0	A	1224	-	24,28,28	1.47	2 (8%)	24,39,39	2.52	7 (29%)

In the following table, the Chirals column lists the number of chiral outliers, the number of chiral centers analysed, the number of these observed in the model and the number defined in the chemical

component dictionary. Similar counts are reported in the Torsion and Rings columns. '-' means no outliers of that kind were identified.

Mol	Type	Chain	Res	Link	Chirals	Torsions	Rings
2	PU0	A	1224	-	-	0/12/12/12	0/3/3/3

All (2) bond length outliers are listed below:

Mol	Chain	Res	Type	Atoms	Z	Observed(Å)	Ideal(Å)
2	A	1224	PU0	C10-N1	2.48	1.39	1.34
2	A	1224	PU0	C14-N4	5.47	1.36	1.31

All (7) bond angle outliers are listed below:

Mol	Chain	Res	Type	Atoms	Z	Observed(°)	Ideal(°)
2	A	1224	PU0	N4-C14-N3	-6.30	122.79	131.11
2	A	1224	PU0	C14-N4-C12	2.14	117.93	114.93
2	A	1224	PU0	C16-C15-N2	2.20	114.15	112.29
2	A	1224	PU0	C14-N3-C13	2.24	120.92	115.03
2	A	1224	PU0	C8-O2-C3	2.77	123.99	117.51
2	A	1224	PU0	C19-O20-C6	5.09	125.27	117.54
2	A	1224	PU0	F1-C14-N4	6.78	120.90	114.44

There are no chirality outliers.

There are no torsion outliers.

There are no ring outliers.

No monomer is involved in short contacts.

5.7 Other polymers [i](#)

There are no such residues in this entry.

5.8 Polymer linkage issues [i](#)

There are no chain breaks in this entry.

6 Fit of model and data

6.1 Protein, DNA and RNA chains

In the following table, the column labelled ‘#RSRZ> 2’ contains the number (and percentage) of RSRZ outliers, followed by percent RSRZ outliers for the chain as percentile scores relative to all X-ray entries and entries of similar resolution. The OWAB column contains the minimum, median, 95th percentile and maximum values of the occupancy-weighted average B-factor per residue. The column labelled ‘Q< 0.9’ lists the number of (and percentage) of residues with an average occupancy less than 0.9.

Mol	Chain	Analysed	<RSRZ>	#RSRZ>2	OWAB(Å ²)	Q<0.9
1	A	209/236 (88%)	2.34	119 (56%) 0 0	48, 68, 82, 92	2 (0%)

All (119) RSRZ outliers are listed below:

Mol	Chain	Res	Type	RSRZ
1	A	124	ALA	11.4
1	A	125	GLY	6.9
1	A	176	THR	6.8
1	A	110	ILE	6.7
1	A	123	GLN	6.2
1	A	107	LEU	6.1
1	A	64	LEU	5.3
1	A	111	ALA	5.0
1	A	16	GLU	4.9
1	A	122	LEU	4.8
1	A	174	THR	4.8
1	A	101	ALA	4.8
1	A	119	MET	4.6
1	A	158	GLU	4.5
1	A	184	THR	4.5
1	A	65	THR	4.3
1	A	177	GLY	4.3
1	A	59	ILE	4.1
1	A	70	LEU	4.1
1	A	78	ILE	4.0
1	A	186	VAL	3.9
1	A	150	VAL	3.9
1	A	19	THR	3.8
1	A	126	ALA	3.7
1	A	121	ALA	3.6
1	A	142	TYR	3.6
1	A	28	GLN	3.5

Continued on next page...

Continued from previous page...

Mol	Chain	Res	Type	RSRZ
1	A	141	ALA	3.5
1	A	103	LEU	3.5
1	A	48	LEU	3.5
1	A	151	ILE	3.4
1	A	113	SER	3.4
1	A	114	GLY	3.4
1	A	26	ILE	3.4
1	A	72	SER	3.4
1	A	120	GLU	3.3
1	A	216	TYR	3.3
1	A	49	ILE	3.2
1	A	66	ASP	3.2
1	A	91	ILE	3.1
1	A	55	ALA	3.1
1	A	97	GLY	3.1
1	A	116	LYS	3.1
1	A	192	GLU	3.1
1	A	175	ASP	3.1
1	A	29	LEU	3.0
1	A	24	ALA	3.0
1	A	63	SER	3.0
1	A	161	ALA	3.0
1	A	105	ASN	3.0
1	A	188	LEU	3.0
1	A	106	ASN	2.9
1	A	32	LEU	2.9
1	A	50	SER	2.9
1	A	31	SER	2.9
1	A	80	LEU	2.8
1	A	187	ILE	2.8
1	A	129	SER	2.7
1	A	134	PHE	2.7
1	A	156	ASP	2.7
1	A	17	VAL	2.7
1	A	170	PHE	2.7
1	A	221	PHE	2.7
1	A	181	GLY	2.7
1	A	180	MET	2.6
1	A	61	TYR	2.6
1	A	162	TRP	2.6
1	A	210	HIS	2.6
1	A	108	GLY	2.6

Continued on next page...

Continued from previous page...

Mol	Chain	Res	Type	RSRZ
1	A	199	GLU	2.6
1	A	33	ILE	2.6
1	A	201	ARG	2.6
1	A	155	ASN	2.6
1	A	95	GLY	2.5
1	A	85	GLN	2.5
1	A	138	PHE	2.5
1	A	71	ASP	2.5
1	A	51	ASN	2.5
1	A	109	THR	2.5
1	A	167	GLY	2.5
1	A	67	PRO	2.5
1	A	75	GLU	2.5
1	A	127	ASP	2.5
1	A	53	SER	2.4
1	A	68	SER	2.4
1	A	83	ASN	2.4
1	A	117	ALA	2.4
1	A	56	LEU	2.3
1	A	143	LEU	2.3
1	A	203[A]	ILE	2.3
1	A	102	ASP	2.3
1	A	130	MET	2.3
1	A	128	ILE	2.3
1	A	44	PHE	2.3
1	A	86	ASP	2.3
1	A	220	LEU	2.3
1	A	159	GLN	2.3
1	A	185	LYS	2.3
1	A	93	ASP	2.3
1	A	74	LYS	2.3
1	A	99	THR	2.3
1	A	136	VAL	2.3
1	A	171	THR	2.3
1	A	52	SER	2.3
1	A	148	VAL	2.2
1	A	200	GLU	2.2
1	A	179	PRO	2.2
1	A	58	LYS	2.2
1	A	152	THR	2.2
1	A	96	ILE	2.2
1	A	214	ILE	2.2

Continued on next page...

Continued from previous page...

Mol	Chain	Res	Type	RSRZ
1	A	157	ASP	2.1
1	A	22	PHE	2.1
1	A	37	PHE	2.1
1	A	218	ILE	2.1
1	A	35	ASN	2.0
1	A	217	PRO	2.0
1	A	98	MET	2.0
1	A	104	ILE	2.0

6.2 Non-standard residues in protein, DNA, RNA chains [i](#)

There are no non-standard protein/DNA/RNA residues in this entry.

6.3 Carbohydrates [i](#)

There are no carbohydrates in this entry.

6.4 Ligands [i](#)

In the following table, the Atoms column lists the number of modelled atoms in the group and the number defined in the chemical component dictionary. LLDF column lists the quality of electron density of the group with respect to its neighbouring residues in protein, DNA or RNA chains. The B-factors column lists the minimum, median, 95th percentile and maximum values of B factors of atoms in the group. The column labelled 'Q< 0.9' lists the number of atoms with occupancy less than 0.9.

Mol	Type	Chain	Res	Atoms	RSCC	RSR	LLDF	B-factors(\AA^2)	Q<0.9
2	PU0	A	1224	26/26	0.72	0.33	0.42	54,62,67,68	0

6.5 Other polymers [i](#)

There are no such residues in this entry.