



Full wwPDB X-ray Structure Validation Report ⓘ

Feb 1, 2016 – 05:51 AM GMT

PDB ID : 2UZ1
Title : 1.65 ANGSTROM STRUCTURE OF BENZALDEHYDE LYASE COM-
PLEXED WITH 2-METHYL-2,4-PENTANEDIOL
Authors : Maraite, A.; Schmidt, T.; Ansorge-Schumacher, M.B.; Brzozowski, A.M.; Gro-
gan, G.
Deposited on : 2007-04-23
Resolution : 1.65 Å(reported)

This is a Full wwPDB X-ray Structure Validation Report for a publicly released PDB entry.
We welcome your comments at validation@mail.wwpdb.org
A user guide is available at
<http://wwpdb.org/validation/2016/XrayValidationReportHelp>
with specific help available everywhere you see the ⓘ symbol.

The following versions of software and data (see [references ⓘ](#)) were used in the production of this report:

MolProbity : 4.02b-467
Mogul : 1.7 (RC4), CSD as536be (2015)
Xtriage (Phenix) : 1.9-1692
EDS : rb-20026688
Percentile statistics : 20151230.v01 (using entries in the PDB archive December 30th 2015)
Refmac : 5.8.0135
CCP4 : 6.5.0
Ideal geometry (proteins) : Engh & Huber (2001)
Ideal geometry (DNA, RNA) : Parkinson et al. (1996)
Validation Pipeline (wwPDB-VP) : trunk26865

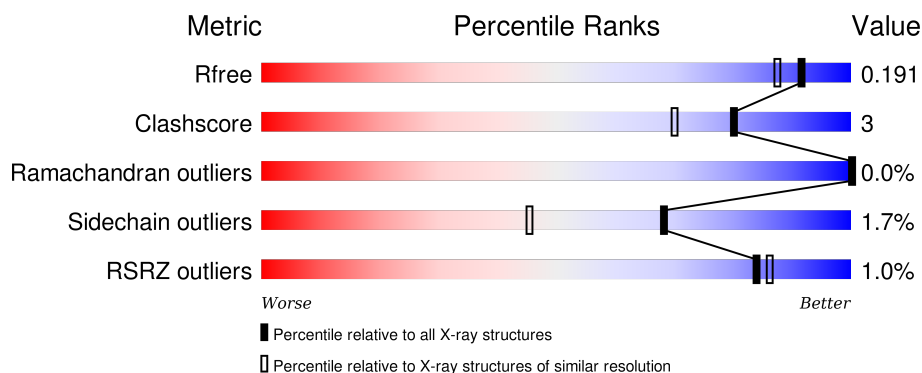
1 Overall quality at a glance ⓘ

The following experimental techniques were used to determine the structure:

X-RAY DIFFRACTION

The reported resolution of this entry is 1.65 Å.

Percentile scores (ranging between 0-100) for global validation metrics of the entry are shown in the following graphic. The table shows the number of entries on which the scores are based.



Metric	Whole archive (#Entries)	Similar resolution (#Entries, resolution range(Å))
R_{free}	91344	1226 (1.66-1.66)
Clashscore	102246	1323 (1.66-1.66)
Ramachandran outliers	100387	1295 (1.66-1.66)
Sidechain outliers	100360	1295 (1.66-1.66)
RSRZ outliers	91569	1227 (1.66-1.66)

The table below summarises the geometric issues observed across the polymeric chains and their fit to the electron density. The red, orange, yellow and green segments on the lower bar indicate the fraction of residues that contain outliers for ≥ 3 , 2, 1 and 0 types of geometric quality criteria. A grey segment represents the fraction of residues that are not modelled. The numeric value for each fraction is indicated below the corresponding segment, with a dot representing fractions $\leq 5\%$. The upper red bar (where present) indicates the fraction of residues that have poor fit to the electron density. The numeric value is given above the bar.

Mol	Chain	Length	Quality of chain
1	A	563	<div> <div></div> <div>92% 6% ..</div> </div>
1	D	563	<div> <div></div> <div>91% 6% ..</div> </div>
2	B	563	<div> <div></div> <div>91% 7% ..</div> </div>
2	C	563	<div> <div></div> <div>92% 6% .</div> </div>

The following table lists non-polymeric compounds, carbohydrate monomers and non-standard

residues in protein, DNA, RNA chains that are outliers for geometric or electron-density-fit criteria:

Mol	Type	Chain	Res	Chirality	Geometry	Clashes	Electron density
4	MPD	B	1559	-	-	-	X
4	MPD	B	1560	-	-	-	X
4	MPD	C	1559	-	-	-	X

2 Entry composition

There are 5 unique types of molecules in this entry. The entry contains 18289 atoms, of which 0 are hydrogens and 0 are deuteriums.

In the tables below, the ZeroOcc column contains the number of atoms modelled with zero occupancy, the AltConf column contains the number of residues with at least one atom in alternate conformation and the Trace column contains the number of residues modelled with at most 2 atoms.

- Molecule 1 is a protein called BENZALDEHYDE LYASE.

Mol	Chain	Residues	Atoms					ZeroOcc	AltConf	Trace
1	A	554	Total	C	N	O	S	0	8	0
			4093	2591	719	766	17			
1	D	554	Total	C	N	O	S	0	7	0
			4053	2570	715	751	17			

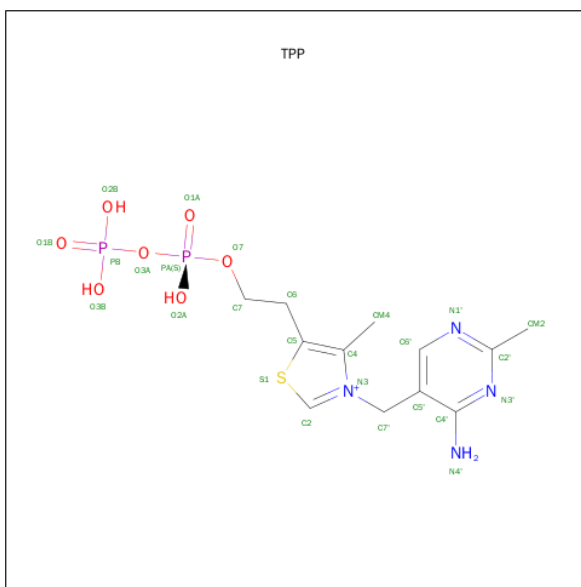
- Molecule 2 is a protein called BENZALDEHYDE LYASE.

Mol	Chain	Residues	Atoms					ZeroOcc	AltConf	Trace
2	B	555	Total	C	N	O	S	0	6	0
			4067	2577	716	757	17			
2	C	555	Total	C	N	O	S	0	4	0
			4069	2584	717	751	17			

There are 2 discrepancies between the modelled and reference sequences:

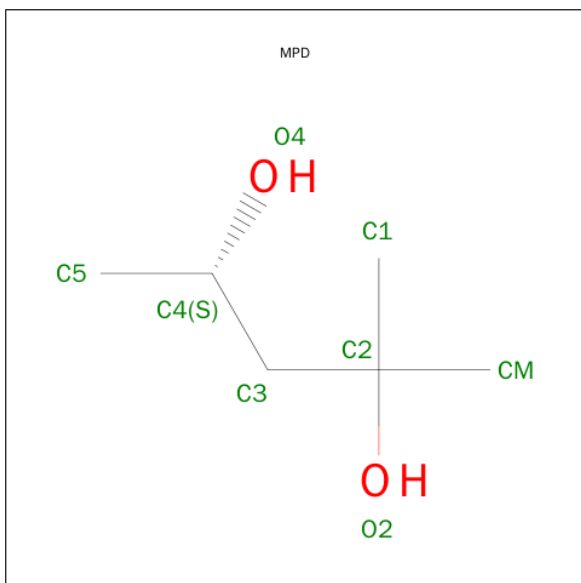
Chain	Residue	Modelled	Actual	Comment	Reference
B	556	ILE	LEU	CONFLICT	UNP Q9F4L3
C	556	ILE	LEU	CONFLICT	UNP Q9F4L3

- Molecule 3 is THIAMINE DIPHOSPHATE (three-letter code: TPP) (formula: C₁₂H₁₉N₄O₇P₂S).



Mol	Chain	Residues	Atoms						ZeroOcc	AltConf
3	A	1	Total	C	N	O	P	S	0	0
			26	12	4	7	2	1		
3	B	1	Total	C	N	O	P	S	0	0
			26	12	4	7	2	1		
3	C	1	Total	C	N	O	P	S	0	0
			26	12	4	7	2	1		
3	D	1	Total	C	N	O	P	S	0	0
			26	12	4	7	2	1		

- Molecule 4 is (4S)-2-METHYL-2,4-PENTANEDIOL (three-letter code: MPD) (formula: $C_6H_{14}O_2$).



Mol	Chain	Residues	Atoms			ZeroOcc	AltConf
4	B	1	Total	C	O	0	0
			7	5	2		
4	B	1	Total	C	O	0	0
			7	5	2		
4	C	1	Total	C	O	0	0
			8	6	2		

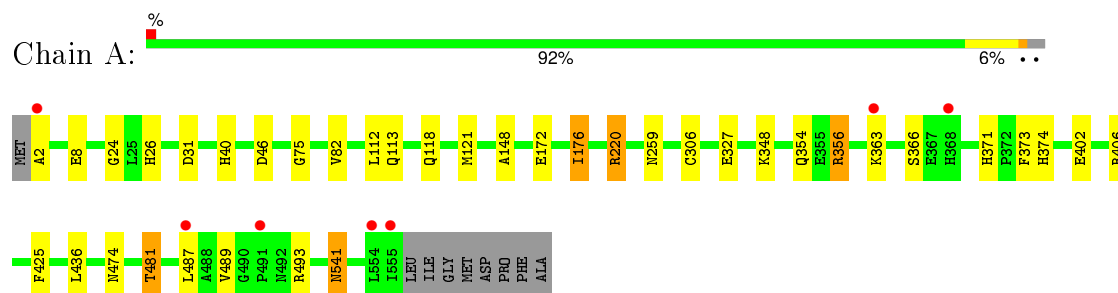
- Molecule 5 is water.

Mol	Chain	Residues	Atoms		ZeroOcc	AltConf
5	A	453	Total	O	0	0
			453	453		
5	B	494	Total	O	0	0
			494	494		
5	C	482	Total	O	0	0
			482	482		
5	D	452	Total	O	0	0
			452	452		

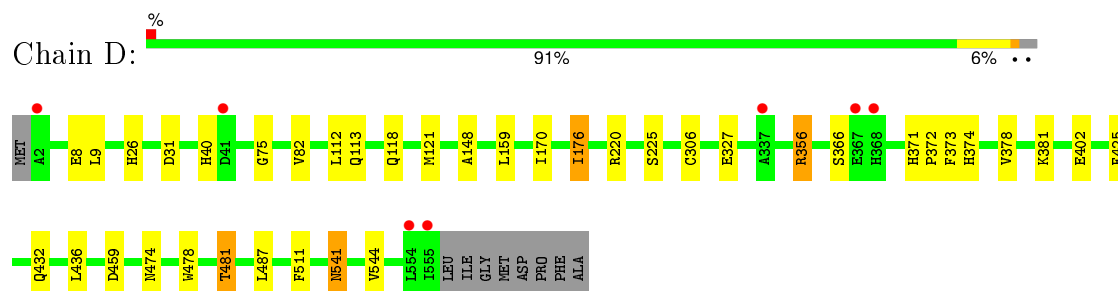
3 Residue-property plots [i](#)

These plots are drawn for all protein, RNA and DNA chains in the entry. The first graphic for a chain summarises the proportions of errors displayed in the second graphic. The second graphic shows the sequence view annotated by issues in geometry and electron density. Residues are color-coded according to the number of geometric quality criteria for which they contain at least one outlier: green = 0, yellow = 1, orange = 2 and red = 3 or more. A red dot above a residue indicates a poor fit to the electron density ($RSRZ > 2$). Stretches of 2 or more consecutive residues without any outlier are shown as a green connector. Residues present in the sample, but not in the model, are shown in grey.

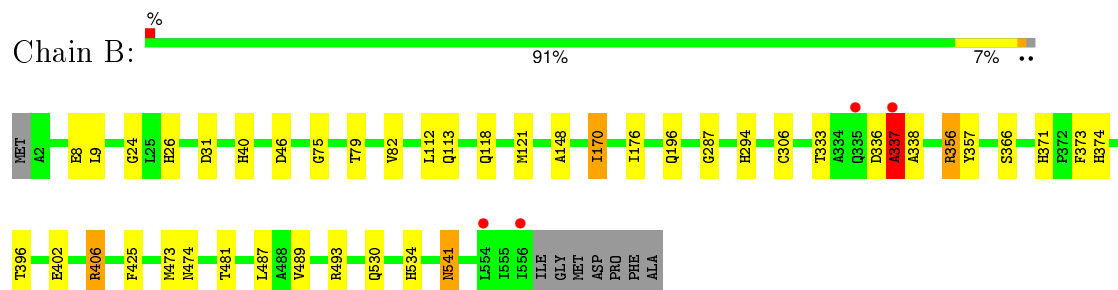
• Molecule 1: BENZALDEHYDE LYASE



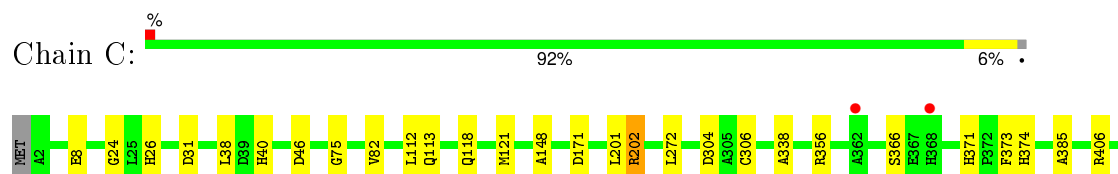
• Molecule 1: BENZALDEHYDE LYASE

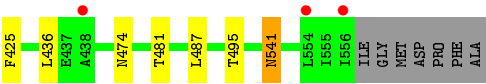


• Molecule 2: BENZALDEHYDE LYASE



• Molecule 2: BENZALDEHYDE LYASE





4 Data and refinement statistics

Property	Value	Source
Space group	P 21 21 21	Depositor
Cell constants a, b, c, α , β , γ	104.46Å 121.60Å 162.96Å 90.00° 90.00° 90.00°	Depositor
Resolution (Å)	97.59 – 1.65 34.28 – 1.65	Depositor EDS
% Data completeness (in resolution range)	99.7 (97.59-1.65) 99.7 (34.28-1.65)	Depositor EDS
R_{merge}	0.13	Depositor
R_{sym}	(Not available)	Depositor
$\langle I/\sigma(I) \rangle$ ¹	2.01 (at 1.64Å)	Xtriage
Refinement program	REFMAC 5.2.0019	Depositor
R, R_{free}	0.167 , 0.192 0.167 , 0.191	Depositor DCC
R_{free} test set	12467 reflections (5.29%)	DCC
Wilson B-factor (Å ²)	11.7	Xtriage
Anisotropy	0.388	Xtriage
Bulk solvent k_{sol} (e/Å ³), B_{sol} (Å ²)	0.37 , 49.8	EDS
Estimated twinning fraction	No twinning to report.	Xtriage
L-test for twinning ²	$\langle L \rangle = 0.50$, $\langle L^2 \rangle = 0.33$	Xtriage
Outliers	2 of 249411 reflections (0.001%)	Xtriage
F_o, F_c correlation	0.96	EDS
Total number of atoms	18289	wwPDB-VP
Average B, all atoms (Å ²)	12.0	wwPDB-VP

Xtriage's analysis on translational NCS is as follows: *The largest off-origin peak in the Patterson function is 2.60% of the height of the origin peak. No significant pseudotranslation is detected.*

¹Intensities estimated from amplitudes.

²Theoretical values of $\langle |L| \rangle$, $\langle L^2 \rangle$ for acentric reflections are 0.5, 0.375 respectively for untwinned datasets, and 0.333, 0.2 for perfectly twinned datasets.

5 Model quality

5.1 Standard geometry

Bond lengths and bond angles in the following residue types are not validated in this section: MPD, TPP

The Z score for a bond length (or angle) is the number of standard deviations the observed value is removed from the expected value. A bond length (or angle) with $|Z| > 5$ is considered an outlier worth inspection. RMSZ is the root-mean-square of all Z scores of the bond lengths (or angles).

Mol	Chain	Bond lengths		Bond angles	
		RMSZ	$\# Z > 5$	RMSZ	$\# Z > 5$
1	A	0.54	0/4200	0.63	2/5733 (0.0%)
1	D	0.52	0/4157	0.62	2/5676 (0.0%)
2	B	0.54	0/4168	0.67	3/5688 (0.1%)
2	C	0.53	0/4164	0.63	5/5682 (0.1%)
All	All	0.53	0/16689	0.64	12/22779 (0.1%)

Chiral center outliers are detected by calculating the chiral volume of a chiral center and verifying if the center is modelled as a planar moiety or with the opposite hand. A planarity outlier is detected by checking planarity of atoms in a peptide group, atoms in a mainchain group or atoms of a sidechain that are expected to be planar.

Mol	Chain	#Chirality outliers	#Planarity outliers
2	B	0	1

There are no bond length outliers.

All (12) bond angle outliers are listed below:

Mol	Chain	Res	Type	Atoms	Z	Observed(°)	Ideal(°)
2	B	356	ARG	NE-CZ-NH1	11.85	126.22	120.30
2	B	356	ARG	NE-CZ-NH2	-10.56	115.02	120.30
1	D	356	ARG	NE-CZ-NH1	7.80	124.20	120.30
2	C	356	ARG	NE-CZ-NH1	7.15	123.87	120.30
1	A	356	ARG	NE-CZ-NH1	6.99	123.80	120.30
1	A	356	ARG	NE-CZ-NH2	-6.61	116.99	120.30
1	D	356	ARG	NE-CZ-NH2	-6.33	117.14	120.30
2	C	202	ARG	NE-CZ-NH2	-5.89	117.36	120.30
2	C	356	ARG	NE-CZ-NH2	-5.52	117.54	120.30
2	C	171	ASP	CB-CG-OD2	5.31	123.08	118.30
2	B	338	ALA	N-CA-C	-5.13	97.14	111.00
2	C	202	ARG	NE-CZ-NH1	5.11	122.86	120.30

There are no chirality outliers.

All (1) planarity outliers are listed below:

Mol	Chain	Res	Type	Group
2	B	337	ALA	Peptide

5.2 Too-close contacts ⓘ

In the following table, the Non-H and H(model) columns list the number of non-hydrogen atoms and hydrogen atoms in the chain respectively. The H(added) column lists the number of hydrogen atoms added and optimized by MolProbity. The Clashes column lists the number of clashes within the asymmetric unit, whereas Symm-Clashes lists symmetry related clashes.

Mol	Chain	Non-H	H(model)	H(added)	Clashes	Symm-Clashes
1	A	4093	0	4084	33	0
1	D	4053	0	4035	32	0
2	B	4067	0	4039	35	0
2	C	4069	0	4060	31	0
3	A	26	0	16	0	0
3	B	26	0	16	0	0
3	C	26	0	16	0	0
3	D	26	0	16	1	0
4	B	14	0	22	0	0
4	C	8	0	14	0	0
5	A	453	0	0	4	0
5	B	494	0	0	5	0
5	C	482	0	0	4	0
5	D	452	0	0	3	0
All	All	18289	0	16318	111	0

The all-atom clashscore is defined as the number of clashes found per 1000 atoms (including hydrogen atoms). The all-atom clashscore for this structure is 3.

All (111) close contacts within the same asymmetric unit are listed below, sorted by their clash magnitude.

Atom-1	Atom-2	Interatomic distance (Å)	Clash overlap (Å)
2:C:82[B]:VAL:HG21	1:D:82[B]:VAL:HG21	1.23	1.07
1:A:371:HIS:HD2	1:A:373:PHE:H	1.15	0.95
1:D:371:HIS:HD2	1:D:373:PHE:H	1.18	0.90
1:A:354:GLN:HE22	1:A:406:ARG:HH12	1.18	0.89
2:C:371:HIS:HD2	2:C:373:PHE:H	1.22	0.87
2:C:82[B]:VAL:CG2	1:D:82[B]:VAL:HG21	2.04	0.86

Continued on next page...

Continued from previous page...

Atom-1	Atom-2	Interatomic distance (Å)	Clash overlap (Å)
2:B:371:HIS:HD2	2:B:373:PHE:H	1.22	0.86
2:C:82[B]:VAL:HG21	1:D:82[B]:VAL:CG2	2.03	0.85
1:A:354:GLN:HE22	1:A:406:ARG:NH1	1.78	0.82
2:C:202:ARG:NH2	2:C:338:ALA:O	2.16	0.79
1:A:371:HIS:CD2	1:A:373:PHE:H	2.02	0.78
1:D:371:HIS:CD2	1:D:373:PHE:H	2.01	0.77
2:C:474:ASN:HD22	2:C:541:ASN:HD21	1.36	0.71
2:B:371:HIS:CD2	2:B:373:PHE:H	2.08	0.71
2:C:8:GLU:OE1	2:C:40:HIS:HE1	1.77	0.68
2:C:82[B]:VAL:CG2	1:D:82[B]:VAL:CG2	2.68	0.68
2:C:371:HIS:CD2	2:C:373:PHE:H	2.09	0.68
1:A:474:ASN:HD22	1:A:541:ASN:HD21	1.42	0.68
1:D:474:ASN:HD22	1:D:541:ASN:HD21	1.40	0.68
2:B:26:HIS:HE1	2:B:31:ASP:OD1	1.77	0.68
2:C:26:HIS:HE1	2:C:31:ASP:OD1	1.78	0.67
1:A:75:GLY:H	1:A:118:GLN:HE22	1.41	0.67
1:D:220:ARG:HD3	1:D:327:GLU:OE1	1.94	0.67
2:B:75:GLY:H	2:B:118:GLN:HE22	1.40	0.66
1:D:366:SER:OG	1:D:374:HIS:HD2	1.79	0.66
1:A:8:GLU:OE1	1:A:40:HIS:HE1	1.78	0.66
1:A:366:SER:OG	1:A:374:HIS:HD2	1.80	0.65
1:A:354:GLN:NE2	1:A:406:ARG:NH1	2.45	0.65
2:B:474:ASN:HD22	2:B:541:ASN:HD21	1.44	0.64
1:D:371:HIS:HD2	1:D:373:PHE:N	1.94	0.64
1:D:75:GLY:H	1:D:118:GLN:HE22	1.45	0.64
2:C:75:GLY:H	2:C:118:GLN:HE22	1.45	0.64
2:B:8:GLU:OE1	2:B:40:HIS:HE1	1.80	0.64
2:B:306[A]:CYS:SG	2:C:148:ALA:HB2	2.39	0.63
2:B:75:GLY:H	2:B:118:GLN:NE2	1.97	0.63
1:A:26:HIS:HE1	1:A:31:ASP:OD1	1.82	0.62
2:B:366:SER:OG	2:B:374:HIS:HD2	1.82	0.62
1:A:354:GLN:NE2	1:A:406:ARG:HH12	1.92	0.62
2:C:366:SER:OG	2:C:374:HIS:HD2	1.83	0.61
1:A:75:GLY:H	1:A:118:GLN:NE2	1.98	0.61
1:D:75:GLY:H	1:D:118:GLN:NE2	1.98	0.61
1:D:26:HIS:HE1	1:D:31:ASP:OD1	1.84	0.60
2:B:406:ARG:HG2	5:B:2392:HOH:O	2.01	0.60
1:D:8:GLU:OE1	1:D:40:HIS:HE1	1.84	0.60
2:C:481:THR:HB	1:D:26:HIS:CD2	2.36	0.60
1:A:374:HIS:HE1	5:A:2323:HOH:O	1.84	0.59
1:A:26:HIS:CD2	2:B:481:THR:HB	2.38	0.58

Continued on next page...

Continued from previous page...

Atom-1	Atom-2	Interatomic distance (Å)	Clash overlap (Å)
2:B:371:HIS:HD2	2:B:373:PHE:N	1.98	0.58
2:B:196:GLN:NE2	5:B:2221:HOH:O	2.37	0.58
2:C:75:GLY:H	2:C:118:GLN:NE2	2.01	0.58
1:A:148:ALA:HB2	1:D:306[A]:CYS:SG	2.44	0.57
1:D:9:LEU:HD11	1:D:170:ILE:HD11	1.86	0.57
1:A:176:ILE:HD11	5:D:2127:HOH:O	2.04	0.57
2:B:374:HIS:HE1	5:B:2359:HOH:O	1.88	0.56
1:D:112:LEU:HG	1:D:113:GLN:HE21	1.70	0.56
1:A:2:ALA:HB1	5:A:2167:HOH:O	2.05	0.55
2:B:79:THR:O	2:B:82[B]:VAL:HG22	2.07	0.55
2:C:304:ASP:CG	2:C:306[A]:CYS:HG	2.10	0.55
1:A:40:HIS:HD2	5:A:2038:HOH:O	1.90	0.55
2:B:371:HIS:HE1	5:B:2362:HOH:O	1.90	0.54
1:A:371:HIS:HD2	1:A:373:PHE:N	1.95	0.54
1:A:306[A]:CYS:SG	1:D:148:ALA:HB2	2.48	0.54
1:A:112:LEU:HG	1:A:113:GLN:HE21	1.74	0.52
2:B:112:LEU:HG	2:B:113:GLN:HE21	1.75	0.52
1:A:363:LYS:HG3	5:A:2322:HOH:O	2.10	0.51
1:D:356:ARG:HD3	1:D:402:GLU:OE1	2.12	0.50
2:B:530:GLN:O	2:B:534:HIS:HD2	1.94	0.50
2:B:148:ALA:HB2	2:C:306[B]:CYS:SG	2.52	0.49
2:C:26:HIS:CD2	1:D:481:THR:HB	2.47	0.49
2:B:406:ARG:HG3	5:B:2395:HOH:O	2.11	0.49
2:C:481:THR:HB	1:D:26:HIS:HD2	1.77	0.49
2:B:287:GLY:O	2:B:294:HIS:HE1	1.96	0.49
2:B:356:ARG:HD3	2:B:402:GLU:OE1	2.14	0.48
2:C:40:HIS:HD2	5:C:2012:HOH:O	1.97	0.48
1:D:378:VAL:O	1:D:381:LYS:HG2	2.13	0.48
2:C:112:LEU:HG	2:C:113:GLN:HE21	1.78	0.47
1:A:481:THR:HB	2:B:26:HIS:CD2	2.50	0.47
1:D:176:ILE:HD11	5:D:2073:HOH:O	2.14	0.47
2:C:24:GLY:O	2:C:46:ASP:HA	2.15	0.47
1:D:374:HIS:HE1	5:D:2343:HOH:O	1.97	0.46
2:B:9:LEU:HD11	2:B:170:ILE:HD11	1.96	0.46
1:D:478:TRP:HB3	3:D:1556:TPP:H61	1.97	0.46
2:B:336:ASP:C	2:B:337:ALA:O	2.54	0.46
2:B:170:ILE:H	2:B:170:ILE:HD13	1.80	0.45
2:B:396:THR:HG23	2:B:473:MET:HG3	1.99	0.45
2:C:371:HIS:HD2	2:C:373:PHE:N	2.01	0.45
1:A:121:MET:HE1	2:B:82[A]:VAL:CG1	2.47	0.44
2:B:357:TYR:CD1	2:B:406:ARG:HD3	2.52	0.44

Continued on next page...

Continued from previous page...

Atom-1	Atom-2	Interatomic distance (Å)	Clash overlap (Å)
1:A:356:ARG:HD3	1:A:402:GLU:OE1	2.17	0.44
2:C:385:ALA:HB2	5:C:2400:HOH:O	2.17	0.44
1:A:2:ALA:HA	1:A:172:GLU:OE1	2.18	0.44
1:A:24:GLY:O	1:A:46:ASP:HA	2.18	0.43
2:C:121:MET:HE1	1:D:82[A]:VAL:HG13	1.99	0.43
2:C:26:HIS:HD2	1:D:481:THR:CG2	2.32	0.43
2:B:24:GLY:O	2:B:46:ASP:HA	2.19	0.43
2:C:82[A]:VAL:HG13	1:D:121:MET:HE1	2.01	0.42
2:C:304:ASP:OD2	2:C:306[A]:CYS:SG	2.76	0.42
1:A:82[B]:VAL:CG1	2:B:121:MET:HE1	2.50	0.42
1:A:220:ARG:HD3	1:A:327:GLU:OE1	2.19	0.42
1:D:459:ASP:HB2	1:D:511:PHE:CD1	2.55	0.41
1:A:82[B]:VAL:HG13	2:B:121:MET:HE1	2.02	0.41
2:C:371:HIS:HE1	5:C:2170:HOH:O	2.02	0.41
1:A:26:HIS:HD2	2:B:481:THR:HB	1.83	0.41
2:B:333:THR:HA	2:B:336:ASP:HB2	2.03	0.41
1:D:432:GLN:O	1:D:436:LEU:HG	2.21	0.41
2:C:201:LEU:HA	2:C:272[A]:LEU:CD2	2.51	0.41
1:D:372:PRO:HG3	1:D:544[A]:VAL:CG1	2.51	0.41
1:A:489:VAL:HG12	1:A:493:ARG:HG3	2.03	0.40
2:B:489:VAL:HG12	2:B:493:ARG:HG3	2.03	0.40
2:C:374:HIS:HE1	5:C:2367:HOH:O	2.04	0.40
1:A:259:ASN:HD22	1:A:259:ASN:HA	1.67	0.40

There are no symmetry-related clashes.

5.3 Torsion angles [i](#)

5.3.1 Protein backbone [i](#)

In the following table, the Percentiles column shows the percent Ramachandran outliers of the chain as a percentile score with respect to all X-ray entries followed by that with respect to entries of similar resolution.

The Analysed column shows the number of residues for which the backbone conformation was analysed, and the total number of residues.

Mol	Chain	Analysed	Favoured	Allowed	Outliers	Percentiles	
1	A	560/563 (100%)	549 (98%)	11 (2%)	0	100	100
1	D	559/563 (99%)	548 (98%)	11 (2%)	0	100	100

Continued on next page...

Continued from previous page...

Mol	Chain	Analysed	Favoured	Allowed	Outliers	Percentiles	
2	B	559/563 (99%)	547 (98%)	11 (2%)	1 (0%)	52	30
2	C	557/563 (99%)	547 (98%)	10 (2%)	0	100	100
All	All	2235/2252 (99%)	2191 (98%)	43 (2%)	1 (0%)	100	100

All (1) Ramachandran outliers are listed below:

Mol	Chain	Res	Type
2	B	337	ALA

5.3.2 Protein sidechains ⓘ

In the following table, the Percentiles column shows the percent sidechain outliers of the chain as a percentile score with respect to all X-ray entries followed by that with respect to entries of similar resolution.

The Analysed column shows the number of residues for which the sidechain conformation was analysed, and the total number of residues.

Mol	Chain	Analysed	Rotameric	Outliers	Percentiles	
1	A	415/419 (99%)	407 (98%)	8 (2%)	65	40
1	D	404/419 (96%)	396 (98%)	8 (2%)	63	38
2	B	405/419 (97%)	399 (98%)	6 (2%)	72	51
2	C	404/419 (96%)	397 (98%)	7 (2%)	68	45
All	All	1628/1676 (97%)	1599 (98%)	29 (2%)	68	43

All (29) residues with a non-rotameric sidechain are listed below:

Mol	Chain	Res	Type
1	A	176	ILE
1	A	220	ARG
1	A	348	LYS
1	A	425	PHE
1	A	436	LEU
1	A	481	THR
1	A	487	LEU
1	A	541	ASN
2	B	170	ILE
2	B	176	ILE
2	B	406	ARG

Continued on next page...

Continued from previous page...

Mol	Chain	Res	Type
2	B	425	PHE
2	B	487	LEU
2	B	541	ASN
2	C	38	LEU
2	C	406	ARG
2	C	425	PHE
2	C	436	LEU
2	C	487	LEU
2	C	495	THR
2	C	541	ASN
1	D	159	LEU
1	D	176	ILE
1	D	225[A]	SER
1	D	225[B]	SER
1	D	425	PHE
1	D	481	THR
1	D	487	LEU
1	D	541	ASN

Some sidechains can be flipped to improve hydrogen bonding and reduce clashes. All (60) such sidechains are listed below:

Mol	Chain	Res	Type
1	A	26	HIS
1	A	40	HIS
1	A	87	ASN
1	A	113	GLN
1	A	118	GLN
1	A	144	GLN
1	A	259	ASN
1	A	294	HIS
1	A	297	GLN
1	A	354	GLN
1	A	371	HIS
1	A	374	HIS
1	A	415	HIS
1	A	541	ASN
2	B	26	HIS
2	B	40	HIS
2	B	87	ASN
2	B	113	GLN
2	B	118	GLN
2	B	144	GLN

Continued on next page...

Continued from previous page...

Mol	Chain	Res	Type
2	B	196	GLN
2	B	258	GLN
2	B	259	ASN
2	B	294	HIS
2	B	354	GLN
2	B	371	HIS
2	B	374	HIS
2	B	415	HIS
2	B	476	GLN
2	B	517	HIS
2	B	541	ASN
2	C	26	HIS
2	C	40	HIS
2	C	87	ASN
2	C	113	GLN
2	C	118	GLN
2	C	144	GLN
2	C	168	ASN
2	C	196	GLN
2	C	294	HIS
2	C	335	GLN
2	C	371	HIS
2	C	374	HIS
2	C	415	HIS
2	C	534	HIS
2	C	541	ASN
1	D	26	HIS
1	D	40	HIS
1	D	87	ASN
1	D	113	GLN
1	D	118	GLN
1	D	144	GLN
1	D	196	GLN
1	D	259	ASN
1	D	294	HIS
1	D	371	HIS
1	D	374	HIS
1	D	415	HIS
1	D	534	HIS
1	D	541	ASN

5.3.3 RNA ⓘ

There are no RNA molecules in this entry.

5.4 Non-standard residues in protein, DNA, RNA chains ⓘ

There are no non-standard protein/DNA/RNA residues in this entry.

5.5 Carbohydrates ⓘ

There are no carbohydrates in this entry.

5.6 Ligand geometry ⓘ

7 ligands are modelled in this entry.

In the following table, the Counts columns list the number of bonds (or angles) for which Mogul statistics could be retrieved, the number of bonds (or angles) that are observed in the model and the number of bonds (or angles) that are defined in the chemical component dictionary. The Link column lists molecule types, if any, to which the group is linked. The Z score for a bond length (or angle) is the number of standard deviations the observed value is removed from the expected value. A bond length (or angle) with $|Z| > 2$ is considered an outlier worth inspection. RMSZ is the root-mean-square of all Z scores of the bond lengths (or angles).

Mol	Type	Chain	Res	Link	Bond lengths			Bond angles		
					Counts	RMSZ	# $ Z > 2$	Counts	RMSZ	# $ Z > 2$
3	TPP	A	1556	-	20,27,27	1.51	5 (25%)	31,40,40	1.35	6 (19%)
3	TPP	B	1557	-	20,27,27	1.43	5 (25%)	31,40,40	1.35	6 (19%)
4	MPD	B	1559	-	6,6,7	0.69	0	6,7,10	1.11	0
4	MPD	B	1560	-	6,6,7	0.45	0	6,7,10	0.96	0
3	TPP	C	1557	-	20,27,27	1.52	4 (20%)	31,40,40	1.45	5 (16%)
4	MPD	C	1559	-	6,7,7	0.34	0	7,10,10	0.23	0
3	TPP	D	1556	-	20,27,27	1.52	4 (20%)	31,40,40	1.43	4 (12%)

In the following table, the Chirals column lists the number of chiral outliers, the number of chiral centers analysed, the number of these observed in the model and the number defined in the chemical component dictionary. Similar counts are reported in the Torsion and Rings columns. '-' means no outliers of that kind were identified.

Mol	Type	Chain	Res	Link	Chirals	Torsions	Rings
3	TPP	A	1556	-	-	0/16/17/17	0/2/2/2
3	TPP	B	1557	-	-	0/16/17/17	0/2/2/2

Continued on next page...

Continued from previous page...

Mol	Type	Chain	Res	Link	Chirals	Torsions	Rings
4	MPD	B	1559	-	-	0/4/4/5	0/0/0/0
4	MPD	B	1560	-	-	0/4/4/5	0/0/0/0
3	TPP	C	1557	-	-	0/16/17/17	0/2/2/2
4	MPD	C	1559	-	-	0/5/5/5	0/0/0/0
3	TPP	D	1556	-	-	0/16/17/17	0/2/2/2

All (18) bond length outliers are listed below:

Mol	Chain	Res	Type	Atoms	Z	Observed(Å)	Ideal(Å)
3	C	1557	TPP	C4-N3	-3.97	1.36	1.39
3	D	1556	TPP	C4-N3	-3.71	1.36	1.39
3	A	1556	TPP	C4-N3	-3.69	1.36	1.39
3	B	1557	TPP	C4-N3	-3.50	1.36	1.39
3	B	1557	TPP	C4'-N3'	2.00	1.38	1.35
3	D	1556	TPP	C2'-N1'	2.02	1.37	1.34
3	C	1557	TPP	C6'-N1'	2.08	1.38	1.34
3	B	1557	TPP	C6'-N1'	2.30	1.39	1.34
3	A	1556	TPP	C2'-N1'	2.38	1.38	1.34
3	A	1556	TPP	C2'-N3'	2.39	1.38	1.34
3	B	1557	TPP	C2'-N3'	2.42	1.38	1.34
3	B	1557	TPP	C2'-N1'	2.46	1.38	1.34
3	C	1557	TPP	C2'-N3'	2.50	1.38	1.34
3	D	1556	TPP	C2'-N3'	2.51	1.38	1.34
3	A	1556	TPP	C4'-N3'	2.54	1.38	1.35
3	A	1556	TPP	C6'-N1'	2.61	1.40	1.34
3	C	1557	TPP	C4'-N3'	2.80	1.39	1.35
3	D	1556	TPP	C4'-N3'	3.04	1.39	1.35

All (21) bond angle outliers are listed below:

Mol	Chain	Res	Type	Atoms	Z	Observed(°)	Ideal(°)
3	D	1556	TPP	N1'-C2'-N3'	-3.53	119.07	125.60
3	C	1557	TPP	N1'-C2'-N3'	-3.30	119.49	125.60
3	A	1556	TPP	N1'-C2'-N3'	-2.71	120.59	125.60
3	B	1557	TPP	N1'-C2'-N3'	-2.68	120.64	125.60
3	B	1557	TPP	PA-O3A-PB	-2.62	123.87	132.67
3	A	1556	TPP	PA-O3A-PB	-2.50	124.29	132.67
3	C	1557	TPP	PA-O3A-PB	-2.48	124.36	132.67
3	B	1557	TPP	C5'-C6'-N1'	-2.16	120.11	123.86
3	C	1557	TPP	C6-C5-S1	-2.12	117.27	120.24
3	A	1556	TPP	C5'-C6'-N1'	-2.01	120.37	123.86
3	B	1557	TPP	C6'-N1'-C2'	2.07	119.39	115.77

Continued on next page...

Continued from previous page...

Mol	Chain	Res	Type	Atoms	Z	Observed($^{\circ}$)	Ideal($^{\circ}$)
3	B	1557	TPP	CM2-C2'-N1'	2.09	119.54	117.03
3	D	1556	TPP	CM2-C2'-N1'	2.11	119.56	117.03
3	A	1556	TPP	C6'-N1'-C2'	2.13	119.48	115.77
3	A	1556	TPP	O2A-PA-O3A	2.29	115.48	105.09
3	D	1556	TPP	CM2-C2'-N3'	2.45	121.37	117.20
3	C	1557	TPP	C6'-N1'-C2'	2.59	120.30	115.77
3	A	1556	TPP	C6'-C5'-C4'	2.65	119.52	115.72
3	C	1557	TPP	CM2-C2'-N1'	2.94	120.55	117.03
3	B	1557	TPP	C6'-C5'-C4'	2.95	119.95	115.72
3	D	1556	TPP	C6'-N1'-C2'	3.18	121.32	115.77

There are no chirality outliers.

There are no torsion outliers.

There are no ring outliers.

1 monomer is involved in 1 short contact:

Mol	Chain	Res	Type	Clashes	Symm-Clashes
3	D	1556	TPP	1	0

5.7 Other polymers [i](#)

There are no such residues in this entry.

5.8 Polymer linkage issues [i](#)

There are no chain breaks in this entry.

6 Fit of model and data ⓘ

6.1 Protein, DNA and RNA chains ⓘ

In the following table, the column labelled ‘#RSRZ> 2’ contains the number (and percentage) of RSRZ outliers, followed by percent RSRZ outliers for the chain as percentile scores relative to all X-ray entries and entries of similar resolution. The OWAB column contains the minimum, median, 95th percentile and maximum values of the occupancy-weighted average B-factor per residue. The column labelled ‘Q< 0.9’ lists the number of (and percentage) of residues with an average occupancy less than 0.9.

Mol	Chain	Analysed	<RSRZ>	#RSRZ>2	OWAB(Å ²)	Q<0.9
1	A	554/563 (98%)	-0.36	7 (1%) 79 82	5, 10, 20, 31	0
1	D	554/563 (98%)	-0.27	7 (1%) 79 82	6, 12, 20, 29	0
2	B	555/563 (98%)	-0.45	4 (0%) 89 90	5, 9, 18, 31	0
2	C	555/563 (98%)	-0.35	5 (0%) 85 87	6, 11, 21, 31	0
All	All	2218/2252 (98%)	-0.36	23 (1%) 84 86	5, 10, 20, 31	0

All (23) RSRZ outliers are listed below:

Mol	Chain	Res	Type	RSRZ
2	B	337	ALA	5.6
1	D	337	ALA	4.8
1	A	555	ILE	4.4
1	D	368	HIS	3.7
1	A	554	LEU	3.6
1	D	554	LEU	3.3
1	A	368	HIS	3.2
2	C	554	LEU	2.8
1	D	2	ALA	2.8
1	D	367	GLU	2.6
2	C	368	HIS	2.6
2	C	362	ALA	2.5
1	D	555	ILE	2.5
2	B	335	GLN	2.4
1	A	363	LYS	2.4
2	B	556	ILE	2.3
2	C	438	ALA	2.3
1	A	2	ALA	2.1
1	D	41	ASP	2.1
1	A	487	LEU	2.0
1	A	491	PRO	2.0

Continued on next page...

Continued from previous page...

Mol	Chain	Res	Type	RSRZ
2	C	556	ILE	2.0
2	B	554	LEU	2.0

6.2 Non-standard residues in protein, DNA, RNA chains [i](#)

There are no non-standard protein/DNA/RNA residues in this entry.

6.3 Carbohydrates [i](#)

There are no carbohydrates in this entry.

6.4 Ligands [i](#)

In the following table, the Atoms column lists the number of modelled atoms in the group and the number defined in the chemical component dictionary. LLDF column lists the quality of electron density of the group with respect to its neighbouring residues in protein, DNA or RNA chains. The B-factors column lists the minimum, median, 95th percentile and maximum values of B factors of atoms in the group. The column labelled 'Q< 0.9' lists the number of atoms with occupancy less than 0.9.

Mol	Type	Chain	Res	Atoms	RSCC	RSR	LLDF	B-factors(Å ²)	Q<0.9
4	MPD	B	1560	7/8	0.82	0.18	10.73	21,24,30,31	0
4	MPD	B	1559	7/8	0.82	0.15	6.77	18,21,23,24	0
4	MPD	C	1559	8/8	0.75	0.18	3.56	32,34,36,37	0
3	TPP	A	1556	26/26	0.98	0.07	0.66	5,7,8,9	0
3	TPP	B	1557	26/26	0.99	0.07	-0.04	4,6,8,8	0
3	TPP	C	1557	26/26	0.98	0.08	-0.07	7,9,11,11	0
3	TPP	D	1556	26/26	0.98	0.07	-0.27	8,9,10,11	0

6.5 Other polymers [i](#)

There are no such residues in this entry.