



Full wwPDB X-ray Structure Validation Report ⓘ

Feb 1, 2016 – 01:47 PM GMT

PDB ID : 3UZP
Title : crystal structure of ck1d with PF670462 from P21 crystal form
Authors : Huang, X.
Deposited on : 2011-12-07
Resolution : 1.94 Å(reported)

This is a Full wwPDB X-ray Structure Validation Report for a publicly released PDB entry.
We welcome your comments at validation@mail.wwpdb.org
A user guide is available at
<http://wwpdb.org/validation/2016/XrayValidationReportHelp>
with specific help available everywhere you see the ⓘ symbol.

The following versions of software and data (see [references ⓘ](#)) were used in the production of this report:

MolProbity : 4.02b-467
Mogul : 1.7 (RC4), CSD as536be (2015)
Xtriage (Phenix) : 1.9-1692
EDS : rb-20026688
Percentile statistics : 20151230.v01 (using entries in the PDB archive December 30th 2015)
Refmac : 5.8.0135
CCP4 : 6.5.0
Ideal geometry (proteins) : Engh & Huber (2001)
Ideal geometry (DNA, RNA) : Parkinson et al. (1996)
Validation Pipeline (wwPDB-VP) : trunk26865

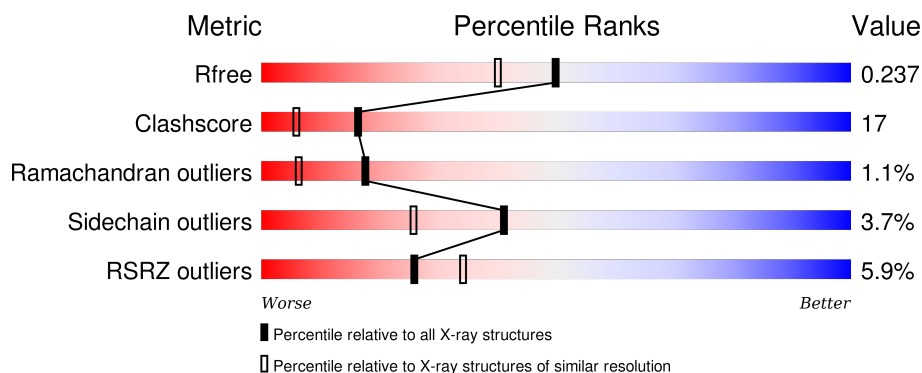
1 Overall quality at a glance ⓘ

The following experimental techniques were used to determine the structure:

X-RAY DIFFRACTION

The reported resolution of this entry is 1.94 Å.

Percentile scores (ranging between 0-100) for global validation metrics of the entry are shown in the following graphic. The table shows the number of entries on which the scores are based.



Metric	Whole archive (#Entries)	Similar resolution (#Entries, resolution range(Å))
R_{free}	91344	2910 (1.96-1.92)
Clashscore	102246	3095 (1.96-1.92)
Ramachandran outliers	100387	3062 (1.96-1.92)
Sidechain outliers	100360	3062 (1.96-1.92)
RSRZ outliers	91569	2915 (1.96-1.92)

The table below summarises the geometric issues observed across the polymeric chains and their fit to the electron density. The red, orange, yellow and green segments on the lower bar indicate the fraction of residues that contain outliers for ≥ 3 , 2, 1 and 0 types of geometric quality criteria. A grey segment represents the fraction of residues that are not modelled. The numeric value for each fraction is indicated below the corresponding segment, with a dot representing fractions $\leq 5\%$. The upper red bar (where present) indicates the fraction of residues that have poor fit to the electron density. The numeric value is given above the bar.

Mol	Chain	Length	Quality of chain
1	A	296	<div> <div>7%</div> <div> <div></div> <div>73%</div> <div>23%</div> <div>...</div> </div> </div>
1	B	296	<div> <div>4%</div> <div> <div></div> <div>67%</div> <div>26%</div> <div>..</div> </div> </div>

2 Entry composition [i](#)

There are 3 unique types of molecules in this entry. The entry contains 4980 atoms, of which 0 are hydrogens and 0 are deuteriums.

In the tables below, the ZeroOcc column contains the number of atoms modelled with zero occupancy, the AltConf column contains the number of residues with at least one atom in alternate conformation and the Trace column contains the number of residues modelled with at most 2 atoms.

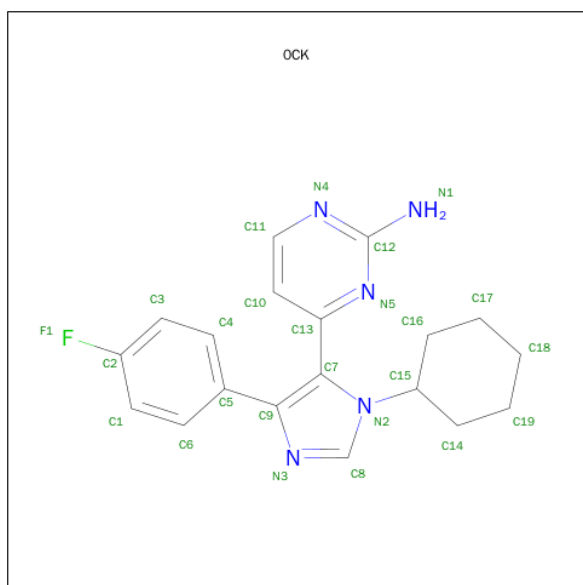
- Molecule 1 is a protein called Casein kinase I isoform delta.

Mol	Chain	Residues	Atoms					ZeroOcc	AltConf	Trace
1	A	292	Total	C	N	O	S	0	0	0
			2333	1495	404	420	14			
1	B	284	Total	C	N	O	S	0	0	0
			2289	1465	398	412	14			

There are 4 discrepancies between the modelled and reference sequences:

Chain	Residue	Modelled	Actual	Comment	Reference
A	-1	GLY	-	EXPRESSION TAG	UNP P48730
A	0	SER	-	EXPRESSION TAG	UNP P48730
B	-1	GLY	-	EXPRESSION TAG	UNP P48730
B	0	SER	-	EXPRESSION TAG	UNP P48730

- Molecule 2 is 4-[1-CYCLOHEXYL-4-(4-FLUOROPHENYL)-1H-IMIDAZOL-5-YL]PYRIMIDIN-2-AMINE (three-letter code: OCK) (formula: C₁₉H₂₀FN₅).



Mol	Chain	Residues	Atoms				ZeroOcc	AltConf
2	A	1	Total	C	F	N	0	0
			25	19	1	5		
2	B	1	Total	C	F	N	0	0
			25	19	1	5		

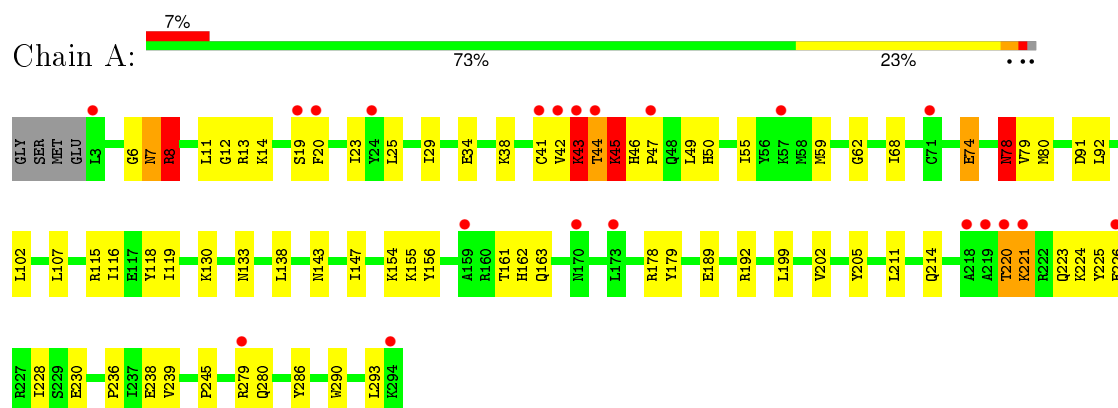
- Molecule 3 is water.

Mol	Chain	Residues	Atoms		ZeroOcc	AltConf
3	A	127	Total	O	0	0
			127	127		
3	B	181	Total	O	0	0
			181	181		

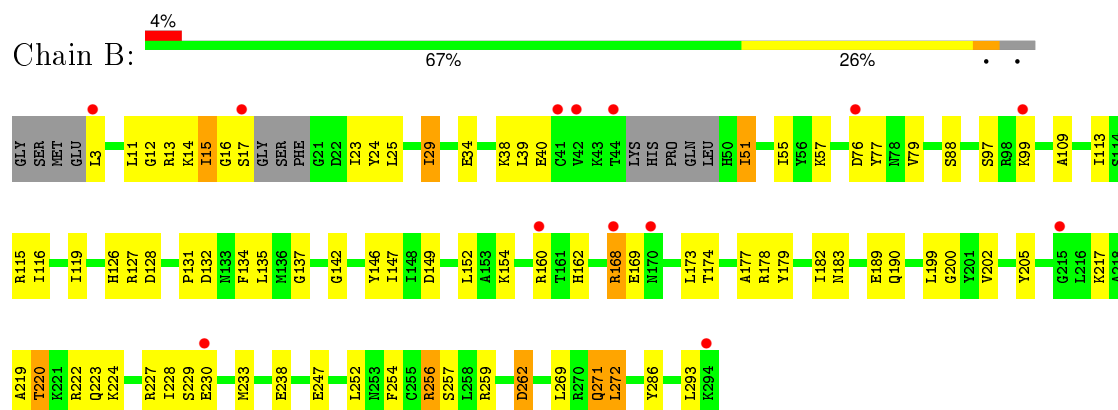
3 Residue-property plots [i](#)

These plots are drawn for all protein, RNA and DNA chains in the entry. The first graphic for a chain summarises the proportions of errors displayed in the second graphic. The second graphic shows the sequence view annotated by issues in geometry and electron density. Residues are color-coded according to the number of geometric quality criteria for which they contain at least one outlier: green = 0, yellow = 1, orange = 2 and red = 3 or more. A red dot above a residue indicates a poor fit to the electron density ($RSRZ > 2$). Stretches of 2 or more consecutive residues without any outlier are shown as a green connector. Residues present in the sample, but not in the model, are shown in grey.

- Molecule 1: Casein kinase I isoform delta



- Molecule 1: Casein kinase I isoform delta



4 Data and refinement statistics

Property	Value	Source
Space group	P 1 21 1	Depositor
Cell constants a, b, c, α , β , γ	49.00 Å 72.80 Å 88.99 Å 90.00° 103.21° 90.00°	Depositor
Resolution (Å)	50.00 – 1.94 38.26 – 1.93	Depositor EDS
% Data completeness (in resolution range)	(Not available) (50.00-1.94) 97.9 (38.26-1.93)	Depositor EDS
R_{merge}	0.06	Depositor
R_{sym}	(Not available)	Depositor
$\langle I/\sigma(I) \rangle$ ¹	3.17 (at 1.94 Å)	Xtriage
Refinement program	CNS	Depositor
R, R_{free}	0.222 , 0.237 0.219 , 0.237	Depositor DCC
R_{free} test set	2236 reflections (5.31%)	DCC
Wilson B-factor (Å ²)	32.2	Xtriage
Anisotropy	0.498	Xtriage
Bulk solvent k_{sol} (e/Å ³), B_{sol} (Å ²)	0.32 , 44.0	EDS
Estimated twinning fraction	0.019 for h,-k,-h-l	Xtriage
L-test for twinning ²	$\langle L \rangle = 0.50$, $\langle L^2 \rangle = 0.33$	Xtriage
Outliers	1 of 44816 reflections (0.002%)	Xtriage
F_o, F_c correlation	0.95	EDS
Total number of atoms	4980	wwPDB-VP
Average B, all atoms (Å ²)	37.0	wwPDB-VP

Xtriage's analysis on translational NCS is as follows: *The largest off-origin peak in the Patterson function is 7.02% of the height of the origin peak. No significant pseudotranslation is detected.*

¹Intensities estimated from amplitudes.

²Theoretical values of $\langle |L| \rangle$, $\langle L^2 \rangle$ for acentric reflections are 0.5, 0.375 respectively for untwinned datasets, and 0.333, 0.2 for perfectly twinned datasets.

5 Model quality

5.1 Standard geometry

Bond lengths and bond angles in the following residue types are not validated in this section: 0CK

The Z score for a bond length (or angle) is the number of standard deviations the observed value is removed from the expected value. A bond length (or angle) with $|Z| > 5$ is considered an outlier worth inspection. RMSZ is the root-mean-square of all Z scores of the bond lengths (or angles).

Mol	Chain	Bond lengths		Bond angles	
		RMSZ	$\# Z > 5$	RMSZ	$\# Z > 5$
1	A	0.54	1/2386 (0.0%)	0.86	10/3213 (0.3%)
1	B	0.58	3/2338 (0.1%)	0.73	4/3145 (0.1%)
All	All	0.56	4/4724 (0.1%)	0.80	14/6358 (0.2%)

All (4) bond length outliers are listed below:

Mol	Chain	Res	Type	Atoms	Z	Observed(Å)	Ideal(Å)
1	B	16	GLY	C-O	9.02	1.38	1.23
1	B	169	GLU	CB-CG	-8.00	1.36	1.52
1	A	45	LYS	CA-CB	-6.58	1.39	1.53
1	B	57	LYS	CB-CG	5.13	1.66	1.52

All (14) bond angle outliers are listed below:

Mol	Chain	Res	Type	Atoms	Z	Observed(°)	Ideal(°)
1	A	8	ARG	NE-CZ-NH2	8.44	124.52	120.30
1	A	44	THR	CA-C-N	-8.33	98.88	117.20
1	A	43	LYS	CA-CB-CG	7.16	129.14	113.40
1	A	78	ASN	N-CA-C	-6.67	93.00	111.00
1	A	8	ARG	CD-NE-CZ	-6.03	115.16	123.60
1	B	160	ARG	NE-CZ-NH2	5.88	123.24	120.30
1	B	160	ARG	CG-CD-NE	5.88	124.15	111.80
1	A	43	LYS	CB-CA-C	-5.78	98.84	110.40
1	A	43	LYS	CD-CE-NZ	5.73	124.88	111.70
1	A	43	LYS	CB-CG-CD	-5.70	96.77	111.60
1	B	262	ASP	CB-CG-OD1	5.46	123.22	118.30
1	B	256	ARG	NE-CZ-NH1	-5.39	117.61	120.30
1	A	11	LEU	CB-CG-CD1	-5.18	102.19	111.00
1	A	220	THR	N-CA-C	5.02	124.55	111.00

There are no chirality outliers.

There are no planarity outliers.

5.2 Too-close contacts

In the following table, the Non-H and H(model) columns list the number of non-hydrogen atoms and hydrogen atoms in the chain respectively. The H(added) column lists the number of hydrogen atoms added and optimized by MolProbity. The Clashes column lists the number of clashes within the asymmetric unit, whereas Symm-Clashes lists symmetry related clashes.

Mol	Chain	Non-H	H(model)	H(added)	Clashes	Symm-Clashes
1	A	2333	0	2290	81	0
1	B	2289	0	2248	79	0
2	A	25	0	20	1	0
2	B	25	0	20	1	0
3	A	127	0	0	11	3
3	B	181	0	0	18	3
All	All	4980	0	4578	154	3

The all-atom clashscore is defined as the number of clashes found per 1000 atoms (including hydrogen atoms). The all-atom clashscore for this structure is 17.

All (154) close contacts within the same asymmetric unit are listed below, sorted by their clash magnitude.

Atom-1	Atom-2	Interatomic distance (Å)	Clash overlap (Å)
1:A:43:LYS:HZ1	1:A:44:THR:HB	1.18	1.06
1:A:91:ASP:OD2	3:A:364:HOH:O	1.76	1.02
1:B:168:ARG:HG3	1:B:168:ARG:HH11	1.24	1.01
1:B:220:THR:HG23	1:B:223:GLN:NE2	1.78	0.99
1:A:238:GLU:HG2	3:A:315:HOH:O	1.63	0.96
1:A:163:GLN:HG3	3:A:359:HOH:O	1.66	0.95
1:A:163:GLN:CG	3:A:359:HOH:O	2.17	0.91
1:B:76:ASP:OD1	3:B:432:HOH:O	1.91	0.89
1:B:259:ARG:NH1	3:B:398:HOH:O	2.04	0.88
1:A:43:LYS:HE2	1:A:44:THR:H	1.40	0.86
1:B:230:GLU:HG3	3:B:375:HOH:O	1.77	0.85
1:B:128:ASP:OD2	3:B:386:HOH:O	1.95	0.84
1:B:3:LEU:HD21	3:B:335:HOH:O	1.78	0.82
1:B:256:ARG:NH1	3:B:387:HOH:O	1.88	0.79
1:A:236:PRO:HG2	1:A:239:VAL:HG23	1.65	0.78
1:A:43:LYS:HZ1	1:A:44:THR:CB	1.94	0.78
1:B:271:GLN:HG3	3:B:438:HOH:O	1.83	0.78

Continued on next page...

Continued from previous page...

Atom-1	Atom-2	Interatomic distance (Å)	Clash overlap (Å)
1:B:132:ASP:OD1	3:B:321:HOH:O	1.99	0.78
1:A:279:ARG:HB2	3:A:342:HOH:O	1.83	0.77
1:A:44:THR:OG1	1:A:45:LYS:N	2.20	0.75
1:B:168:ARG:CG	1:B:168:ARG:HH11	2.00	0.73
1:B:238:GLU:HB2	3:B:379:HOH:O	1.88	0.73
1:A:43:LYS:NZ	1:A:44:THR:HB	2.00	0.73
1:A:43:LYS:CE	1:A:44:THR:H	2.03	0.72
1:B:183:ASN:ND2	3:B:392:HOH:O	2.19	0.71
1:A:43:LYS:NZ	1:A:44:THR:CG2	2.54	0.70
1:A:34:GLU:OE2	3:A:463:HOH:O	2.09	0.70
1:A:279:ARG:HD3	3:A:357:HOH:O	1.91	0.69
1:B:168:ARG:NH1	1:B:168:ARG:HG3	2.04	0.69
1:B:259:ARG:HH11	1:B:259:ARG:HG2	1.57	0.69
1:A:43:LYS:HE2	1:A:44:THR:HG22	1.75	0.68
1:B:162:HIS:ND1	3:B:437:HOH:O	2.27	0.68
1:A:138:LEU:HD13	1:B:34:GLU:HG2	1.76	0.67
1:A:6:GLY:N	1:A:74:GLU:OE1	2.25	0.67
1:B:39:LEU:CD2	1:B:79:VAL:HG22	2.25	0.67
1:B:189:GLU:OE2	3:B:389:HOH:O	2.14	0.65
1:A:41:CYS:HB3	1:A:43:LYS:HG3	1.78	0.65
1:B:259:ARG:HH11	1:B:259:ARG:CG	2.10	0.65
1:B:3:LEU:HD22	1:B:11:LEU:HD22	1.80	0.64
1:B:220:THR:H	1:B:223:GLN:HE21	1.46	0.62
1:B:3:LEU:HD11	3:B:335:HOH:O	1.98	0.62
1:B:15:ILE:HD13	1:B:25:LEU:HB2	1.81	0.62
1:B:137:GLY:O	1:B:142:GLY:HA2	2.00	0.62
1:A:224:LYS:HE2	1:A:228:ILE:HD11	1.81	0.62
1:A:236:PRO:HG2	1:A:239:VAL:CG2	2.28	0.62
1:A:220:THR:O	1:A:221:LYS:CB	2.48	0.62
1:A:107:LEU:HD22	1:A:286:TYR:CD1	2.36	0.60
1:A:43:LYS:HZ3	1:A:44:THR:CG2	2.15	0.59
1:B:39:LEU:HD23	1:B:79:VAL:HG22	1.83	0.59
1:A:68:ILE:HD12	1:A:80:MET:HG2	1.85	0.57
1:A:43:LYS:NZ	1:A:44:THR:CB	2.61	0.57
1:A:6:GLY:O	1:A:8:ARG:N	2.33	0.57
1:A:23:ILE:HD11	1:A:38:LYS:HD2	1.87	0.56
1:A:43:LYS:CE	1:A:44:THR:HG22	2.36	0.56
1:B:286:TYR:OH	3:B:571:HOH:O	2.18	0.56
1:B:168:ARG:NH1	1:B:168:ARG:CG	2.65	0.55
1:A:23:ILE:HD12	1:A:38:LYS:HB2	1.89	0.55
1:A:23:ILE:CD1	1:A:38:LYS:HG3	2.37	0.55

Continued on next page...

Continued from previous page...

Atom-1	Atom-2	Interatomic distance (Å)	Clash overlap (Å)
1:A:6:GLY:C	1:A:8:ARG:H	2.11	0.55
1:A:43:LYS:NZ	1:A:44:THR:HG22	2.21	0.54
1:A:293:LEU:HD12	1:B:29:ILE:HD11	1.88	0.54
1:B:116:ILE:HD12	1:B:199:LEU:HD22	1.89	0.54
1:A:286:TYR:OH	3:A:345:HOH:O	2.16	0.54
1:B:154:LYS:NZ	1:B:189:GLU:OE2	2.40	0.53
1:A:279:ARG:HH21	1:A:280:GLN:NE2	2.06	0.53
1:A:224:LYS:O	1:A:228:ILE:HG13	2.09	0.53
1:B:88:SER:HB3	2:B:295:OCK:H16	1.92	0.52
1:B:51:ILE:HD12	1:B:51:ILE:O	2.09	0.52
1:A:14:LYS:O	1:B:13:ARG:HD3	2.09	0.52
1:A:226:GLU:OE2	1:A:230:GLU:CG	2.58	0.52
1:B:219:ALA:HB3	1:B:223:GLN:HE22	1.74	0.51
1:B:51:ILE:HD11	1:B:55:ILE:HD11	1.93	0.50
1:A:202:VAL:O	1:A:205:TYR:HB3	2.11	0.50
1:A:68:ILE:HD12	1:A:80:MET:CG	2.40	0.50
1:A:102:LEU:HD21	1:A:245:PRO:HG2	1.93	0.50
1:A:116:ILE:HD12	1:A:199:LEU:HD22	1.94	0.50
1:A:44:THR:O	1:A:46:HIS:N	2.46	0.49
1:B:12:GLY:HA3	1:B:25:LEU:O	2.13	0.49
1:A:119:ILE:HD11	1:A:147:ILE:HG21	1.92	0.49
1:B:200:GLY:HA3	1:B:252:LEU:HD21	1.94	0.49
1:A:19:SER:O	1:A:20:PHE:HB2	2.12	0.49
1:A:55:ILE:O	1:A:59:MET:HG2	2.12	0.49
1:A:43:LYS:CE	1:A:44:THR:N	2.74	0.49
1:A:23:ILE:CD1	1:A:38:LYS:CG	2.91	0.49
1:B:119:ILE:CD1	1:B:147:ILE:HD13	2.42	0.49
1:A:279:ARG:HD3	3:A:342:HOH:O	2.11	0.48
1:A:23:ILE:HD12	1:A:38:LYS:CB	2.43	0.48
1:B:109:ALA:O	1:B:113:ILE:HG13	2.12	0.48
1:B:134:PHE:C	1:B:135:LEU:HD23	2.34	0.48
1:A:49:LEU:HD23	1:A:78:ASN:HB3	1.95	0.48
1:B:259:ARG:CG	1:B:259:ARG:NH1	2.71	0.48
1:A:279:ARG:CB	3:A:342:HOH:O	2.53	0.48
1:A:293:LEU:CD1	1:B:29:ILE:HD11	2.43	0.48
1:B:177:ALA:HB1	1:B:228:ILE:HD12	1.94	0.47
1:B:190:GLN:NE2	3:B:402:HOH:O	2.47	0.47
1:B:15:ILE:HD13	1:B:25:LEU:CB	2.43	0.47
1:B:3:LEU:HD22	1:B:11:LEU:CD2	2.43	0.47
1:B:254:PHE:O	1:B:257:SER:HB2	2.14	0.47
1:B:182:ILE:HD12	1:B:256:ARG:CZ	2.45	0.47

Continued on next page...

Continued from previous page...

Atom-1	Atom-2	Interatomic distance (Å)	Clash overlap (Å)
1:A:13:ARG:HD2	1:B:14:LYS:O	2.15	0.47
1:B:128:ASP:HB2	1:B:152:LEU:HD12	1.97	0.47
1:A:226:GLU:OE2	1:A:230:GLU:HG2	2.14	0.46
1:A:7:ASN:ND2	1:B:293:LEU:HD22	2.30	0.46
1:B:173:LEU:HD21	1:B:222:ARG:NH2	2.31	0.46
1:B:178:ARG:HD2	1:B:179:TYR:CZ	2.51	0.46
1:A:156:TYR:CZ	1:A:192:ARG:HD3	2.51	0.46
1:A:178:ARG:HD2	1:A:179:TYR:CZ	2.51	0.46
1:B:23:ILE:CD1	1:B:38:LYS:HG3	2.46	0.46
1:A:115:ARG:O	1:A:119:ILE:HG13	2.16	0.45
2:A:295:OCK:H19	3:A:313:HOH:O	2.15	0.45
1:B:238:GLU:OE2	3:B:379:HOH:O	2.21	0.45
1:B:126:HIS:O	1:B:127:ARG:HB2	2.17	0.45
1:A:62:GLY:HA3	1:A:118:TYR:CZ	2.51	0.45
1:B:131:PRO:HG3	1:B:202:VAL:HG13	1.99	0.45
1:A:19:SER:C	1:A:20:PHE:CD1	2.90	0.44
1:A:161:THR:O	1:A:162:HIS:HB2	2.18	0.44
1:A:226:GLU:OE2	1:A:230:GLU:HG3	2.18	0.44
1:A:44:THR:C	1:A:46:HIS:N	2.71	0.44
1:A:107:LEU:CD2	1:A:286:TYR:CD1	3.00	0.44
1:B:119:ILE:HD12	1:B:147:ILE:HD13	2.00	0.44
1:A:14:LYS:O	1:B:13:ARG:CD	2.65	0.44
1:B:3:LEU:CD2	3:B:335:HOH:O	2.52	0.44
1:A:43:LYS:HE2	1:A:43:LYS:HB2	1.11	0.43
1:A:78:ASN:HA	1:A:78:ASN:HD22	1.59	0.43
1:B:217:LYS:O	1:B:227:ARG:NH1	2.47	0.43
1:B:229:SER:O	1:B:233:MET:HG3	2.19	0.43
1:A:154:LYS:NZ	1:A:189:GLU:OE2	2.49	0.43
1:A:220:THR:OG1	1:A:223:GLN:N	2.51	0.42
1:B:254:PHE:CD2	1:B:269:LEU:HD21	2.54	0.42
1:B:119:ILE:HD11	1:B:147:ILE:HG21	2.01	0.42
1:B:3:LEU:HB3	1:B:11:LEU:HB3	2.01	0.42
1:A:44:THR:OG1	1:A:45:LYS:CB	2.67	0.42
1:B:182:ILE:HD12	1:B:256:ARG:NE	2.35	0.42
1:A:43:LYS:HZ3	1:A:44:THR:HG22	1.80	0.42
1:B:97:SER:O	1:B:99:LYS:HG3	2.20	0.42
1:B:24:TYR:CE1	1:B:39:LEU:HD12	2.55	0.41
1:A:211:LEU:O	1:A:214:GLN:HB2	2.20	0.41
1:A:12:GLY:N	1:A:25:LEU:O	2.51	0.41
1:A:43:LYS:HB3	1:A:43:LYS:HE3	1.50	0.41
1:B:39:LEU:HD22	1:B:77:TYR:CD2	2.55	0.41

Continued on next page...

Continued from previous page...

Atom-1	Atom-2	Interatomic distance (Å)	Clash overlap (Å)
1:A:130:LYS:HE2	1:A:133:ASN:ND2	2.34	0.41
1:A:92:LEU:HD13	1:A:290:TRP:CE2	2.55	0.41
1:B:24:TYR:N	1:B:24:TYR:CD1	2.88	0.41
1:B:39:LEU:HD22	1:B:77:TYR:CE2	2.56	0.41
1:B:152:LEU:HD22	1:B:174:THR:HG23	2.01	0.41
1:A:43:LYS:HB2	1:A:44:THR:H	1.20	0.41
1:B:134:PHE:HA	1:B:146:TYR:O	2.20	0.41
1:B:247:GLU:HG3	1:B:272:LEU:HD22	2.03	0.41
1:B:115:ARG:HD3	1:B:115:ARG:HA	1.95	0.41
1:A:224:LYS:HG3	1:A:225:TYR:HD1	1.86	0.41
1:B:202:VAL:O	1:B:205:TYR:HB3	2.22	0.40
1:B:224:LYS:HE2	3:B:348:HOH:O	2.21	0.40
1:A:6:GLY:C	1:A:8:ARG:N	2.74	0.40
1:B:259:ARG:O	1:B:262:ASP:HB2	2.22	0.40

All (3) symmetry-related close contacts are listed below. The label for Atom-2 includes the symmetry operator and encoded unit-cell translations to be applied.

Atom-1	Atom-2	Interatomic distance (Å)	Clash overlap (Å)
3:A:368:HOH:O	3:B:379:HOH:O[1_556]	1.86	0.34
3:A:323:HOH:O	3:B:365:HOH:O[1_556]	2.09	0.11
3:A:363:HOH:O	3:B:316:HOH:O[2_545]	2.11	0.09

5.3 Torsion angles ⓘ

5.3.1 Protein backbone ⓘ

In the following table, the Percentiles column shows the percent Ramachandran outliers of the chain as a percentile score with respect to all X-ray entries followed by that with respect to entries of similar resolution.

The Analysed column shows the number of residues for which the backbone conformation was analysed, and the total number of residues.

Mol	Chain	Analysed	Favoured	Allowed	Outliers	Percentiles	
1	A	290/296 (98%)	276 (95%)	9 (3%)	5 (2%)	11	3
1	B	278/296 (94%)	269 (97%)	8 (3%)	1 (0%)	39	26
All	All	568/592 (96%)	545 (96%)	17 (3%)	6 (1%)	17	6

All (6) Ramachandran outliers are listed below:

Mol	Chain	Res	Type
1	A	43	LYS
1	A	45	LYS
1	A	221	LYS
1	A	7	ASN
1	B	149	ASP
1	A	47	PRO

5.3.2 Protein sidechains ⓘ

In the following table, the Percentiles column shows the percent sidechain outliers of the chain as a percentile score with respect to all X-ray entries followed by that with respect to entries of similar resolution.

The Analysed column shows the number of residues for which the sidechain conformation was analysed, and the total number of residues.

Mol	Chain	Analysed	Rotameric	Outliers	Percentiles	
1	A	244/259 (94%)	235 (96%)	9 (4%)	41	26
1	B	240/259 (93%)	231 (96%)	9 (4%)	40	24
All	All	484/518 (93%)	466 (96%)	18 (4%)	41	26

All (18) residues with a non-rotameric sidechain are listed below:

Mol	Chain	Res	Type
1	A	8	ARG
1	A	29	ILE
1	A	42	VAL
1	A	50	HIS
1	A	74	GLU
1	A	78	ASN
1	A	79	VAL
1	A	143	ASN
1	A	155	LYS
1	B	15	ILE
1	B	17	SER
1	B	29	ILE
1	B	40	GLU
1	B	51	ILE
1	B	168	ARG
1	B	220	THR
1	B	271	GLN

Continued on next page...

Continued from previous page...

Mol	Chain	Res	Type
1	B	272	LEU

Some sidechains can be flipped to improve hydrogen bonding and reduce clashes. All (8) such sidechains are listed below:

Mol	Chain	Res	Type
1	A	7	ASN
1	A	78	ASN
1	A	143	ASN
1	A	190	GLN
1	A	280	GLN
1	B	183	ASN
1	B	190	GLN
1	B	223	GLN

5.3.3 RNA [i](#)

There are no RNA molecules in this entry.

5.4 Non-standard residues in protein, DNA, RNA chains [i](#)

There are no non-standard protein/DNA/RNA residues in this entry.

5.5 Carbohydrates [i](#)

There are no carbohydrates in this entry.

5.6 Ligand geometry [i](#)

2 ligands are modelled in this entry.

In the following table, the Counts columns list the number of bonds (or angles) for which Mogul statistics could be retrieved, the number of bonds (or angles) that are observed in the model and the number of bonds (or angles) that are defined in the chemical component dictionary. The Link column lists molecule types, if any, to which the group is linked. The Z score for a bond length (or angle) is the number of standard deviations the observed value is removed from the expected value. A bond length (or angle) with $|Z| > 2$ is considered an outlier worth inspection. RMSZ is the root-mean-square of all Z scores of the bond lengths (or angles).

Mol	Type	Chain	Res	Link	Bond lengths			Bond angles		
					Counts	RMSZ	# Z > 2	Counts	RMSZ	# Z > 2
2	OCK	A	295	-	24,28,28	2.89	14 (58%)	29,39,39	2.72	10 (34%)
2	OCK	B	295	-	24,28,28	2.80	12 (50%)	29,39,39	2.73	11 (37%)

In the following table, the Chirals column lists the number of chiral outliers, the number of chiral centers analysed, the number of these observed in the model and the number defined in the chemical component dictionary. Similar counts are reported in the Torsion and Rings columns. '-' means no outliers of that kind were identified.

Mol	Type	Chain	Res	Link	Chirals	Torsions	Rings
2	OCK	A	295	-	-	0/5/20/20	0/4/4/4
2	OCK	B	295	-	-	0/5/20/20	0/4/4/4

All (26) bond length outliers are listed below:

Mol	Chain	Res	Type	Atoms	Z	Observed(Å)	Ideal(Å)
2	A	295	OCK	C15-N2	-3.14	1.44	1.49
2	B	295	OCK	C15-N2	-2.56	1.45	1.49
2	A	295	OCK	C10-C11	2.04	1.42	1.38
2	A	295	OCK	C12-N1	2.57	1.39	1.34
2	A	295	OCK	C12-N4	2.61	1.39	1.35
2	B	295	OCK	C5-C9	2.71	1.52	1.49
2	A	295	OCK	C4-C5	2.78	1.45	1.39
2	A	295	OCK	C5-C9	2.78	1.52	1.49
2	B	295	OCK	C10-C11	2.78	1.44	1.38
2	B	295	OCK	C6-C1	2.84	1.43	1.38
2	A	295	OCK	C10-C13	2.90	1.45	1.38
2	B	295	OCK	C7-C9	3.11	1.50	1.43
2	B	295	OCK	C10-C13	3.20	1.46	1.38
2	A	295	OCK	C1-C2	3.33	1.43	1.37
2	A	295	OCK	C6-C1	3.42	1.44	1.38
2	B	295	OCK	C1-C2	3.63	1.44	1.37
2	B	295	OCK	C4-C5	3.74	1.47	1.39
2	A	295	OCK	C4-C3	3.88	1.45	1.38
2	B	295	OCK	C6-C5	4.03	1.48	1.39
2	A	295	OCK	C7-C9	4.04	1.52	1.43
2	A	295	OCK	C6-C5	4.10	1.48	1.39
2	B	295	OCK	C3-C2	5.06	1.47	1.37
2	B	295	OCK	C4-C3	5.24	1.48	1.38
2	A	295	OCK	C3-C2	5.48	1.48	1.37
2	B	295	OCK	C13-N5	5.52	1.42	1.34
2	A	295	OCK	C13-N5	6.36	1.43	1.34

All (21) bond angle outliers are listed below:

Mol	Chain	Res	Type	Atoms	Z	Observed(°)	Ideal(°)
2	A	295	0CK	N4-C12-N5	-4.41	121.18	125.78
2	A	295	0CK	C10-C13-N5	-4.12	116.32	122.01
2	B	295	0CK	C10-C11-N4	-3.71	119.67	123.90
2	B	295	0CK	C10-C13-N5	-3.68	116.93	122.01
2	B	295	0CK	C6-C5-C9	-3.58	115.01	120.60
2	B	295	0CK	N4-C12-N5	-3.44	122.19	125.78
2	A	295	0CK	C10-C11-N4	-3.32	120.11	123.90
2	A	295	0CK	C6-C5-C9	-2.74	116.33	120.60
2	A	295	0CK	F1-C2-C3	2.04	121.92	118.52
2	B	295	0CK	C19-C14-C15	2.04	114.76	111.59
2	A	295	0CK	C14-C15-N2	2.09	114.38	110.76
2	B	295	0CK	C11-C10-C13	2.47	119.62	117.26
2	A	295	0CK	C7-C13-N5	2.53	121.17	116.50
2	B	295	0CK	C7-N2-C15	2.65	131.44	126.12
2	B	295	0CK	C4-C5-C9	2.81	124.98	120.60
2	A	295	0CK	C11-C10-C13	3.00	120.13	117.26
2	B	295	0CK	C14-C15-N2	4.88	119.21	110.76
2	B	295	0CK	C11-N4-C12	4.98	120.80	116.32
2	A	295	0CK	C11-N4-C12	5.12	120.92	116.32
2	B	295	0CK	C13-N5-C12	8.22	120.79	116.34
2	A	295	0CK	C13-N5-C12	9.20	121.33	116.34

There are no chirality outliers.

There are no torsion outliers.

There are no ring outliers.

2 monomers are involved in 2 short contacts:

Mol	Chain	Res	Type	Clashes	Symm-Clashes
2	A	295	0CK	1	0
2	B	295	0CK	1	0

5.7 Other polymers [i](#)

There are no such residues in this entry.

5.8 Polymer linkage issues [i](#)

There are no chain breaks in this entry.

6 Fit of model and data ⓘ

6.1 Protein, DNA and RNA chains ⓘ

In the following table, the column labelled ‘#RSRZ > 2’ contains the number (and percentage) of RSRZ outliers, followed by percent RSRZ outliers for the chain as percentile scores relative to all X-ray entries and entries of similar resolution. The OWAB column contains the minimum, median, 95th percentile and maximum values of the occupancy-weighted average B-factor per residue. The column labelled ‘Q < 0.9’ lists the number of (and percentage) of residues with an average occupancy less than 0.9.

Mol	Chain	Analysed	<RSRZ>	#RSRZ > 2		OWAB(Å ²)	Q < 0.9
1	A	292/296 (98%)	0.54	21 (7%)	18 26	23, 36, 61, 72	1 (0%)
1	B	284/296 (95%)	0.28	13 (4%)	36 45	22, 34, 51, 60	0
All	All	576/592 (97%)	0.41	34 (5%)	26 34	22, 35, 56, 72	1 (0%)

All (34) RSRZ outliers are listed below:

Mol	Chain	Res	Type	RSRZ
1	A	220	THR	6.5
1	A	20	PHE	4.4
1	A	47	PRO	4.4
1	A	294	LYS	4.3
1	A	279	ARG	4.1
1	A	42	VAL	4.0
1	A	219	ALA	3.4
1	A	41	CYS	3.1
1	B	17	SER	3.0
1	A	44	THR	3.0
1	A	221	LYS	2.9
1	B	160	ARG	2.7
1	A	71	CYS	2.7
1	B	168	ARG	2.7
1	B	3	LEU	2.6
1	A	218	ALA	2.5
1	B	230	GLU	2.5
1	B	170	ASN	2.5
1	A	43	LYS	2.4
1	B	44	THR	2.3
1	B	42	VAL	2.3
1	B	76	ASP	2.3
1	B	41	CYS	2.2
1	A	173	LEU	2.2

Continued on next page...

Continued from previous page...

Mol	Chain	Res	Type	RSRZ
1	B	99	LYS	2.2
1	A	226	GLU	2.2
1	B	215	GLY	2.1
1	A	24	TYR	2.1
1	A	19	SER	2.1
1	A	3	LEU	2.1
1	A	57	LYS	2.0
1	A	170	ASN	2.0
1	B	294	LYS	2.0
1	A	159	ALA	2.0

6.2 Non-standard residues in protein, DNA, RNA chains [i](#)

There are no non-standard protein/DNA/RNA residues in this entry.

6.3 Carbohydrates [i](#)

There are no carbohydrates in this entry.

6.4 Ligands [i](#)

In the following table, the Atoms column lists the number of modelled atoms in the group and the number defined in the chemical component dictionary. LLDF column lists the quality of electron density of the group with respect to its neighbouring residues in protein, DNA or RNA chains. The B-factors column lists the minimum, median, 95th percentile and maximum values of B factors of atoms in the group. The column labelled 'Q< 0.9' lists the number of atoms with occupancy less than 0.9.

Mol	Type	Chain	Res	Atoms	RSCC	RSR	LLDF	B-factors(Å ²)	Q<0.9
2	OCK	A	295	25/25	0.89	0.14	0.63	30,35,38,39	0
2	OCK	B	295	25/25	0.92	0.12	0.09	26,29,31,33	0

6.5 Other polymers [i](#)

There are no such residues in this entry.