



Full wwPDB X-ray Structure Validation Report ⓘ

Feb 1, 2016 – 06:04 AM GMT

PDB ID : 2VUR
Title : CHEMICAL DISSECTION OF THE LINK BETWEEN STREPTOZOTOCIN, O-GLCNAC AND PANCREATIC CELL DEATH
Authors : Pathak, S.; Dorfmueeller, H.C.; Borodkin, V.S.; Van Aalten, D.M.F.
Deposited on : 2008-05-29
Resolution : 2.20 Å(reported)

This is a Full wwPDB X-ray Structure Validation Report for a publicly released PDB entry.
We welcome your comments at validation@mail.wwpdb.org
A user guide is available at
<http://wwpdb.org/validation/2016/XrayValidationReportHelp>
with specific help available everywhere you see the ⓘ symbol.

The following versions of software and data (see [references ⓘ](#)) were used in the production of this report:

MolProbity : 4.02b-467
Mogul : 1.7 (RC4), CSD as536be (2015)
Xtriage (Phenix) : 1.9-1692
EDS : rb-20026688
Percentile statistics : 20151230.v01 (using entries in the PDB archive December 30th 2015)
Refmac : 5.8.0135
CCP4 : 6.5.0
Ideal geometry (proteins) : Engh & Huber (2001)
Ideal geometry (DNA, RNA) : Parkinson et al. (1996)
Validation Pipeline (wwPDB-VP) : trunk26865

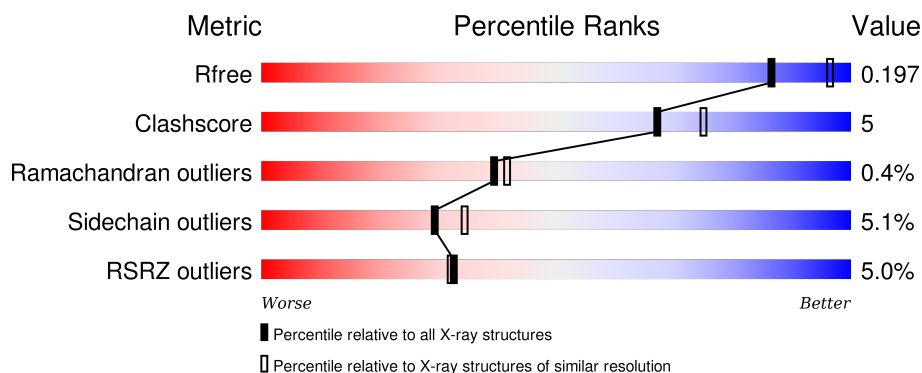
1 Overall quality at a glance

The following experimental techniques were used to determine the structure:

X-RAY DIFFRACTION

The reported resolution of this entry is 2.20 Å.

Percentile scores (ranging between 0-100) for global validation metrics of the entry are shown in the following graphic. The table shows the number of entries on which the scores are based.



Metric	Whole archive (#Entries)	Similar resolution (#Entries, resolution range(Å))
R_{free}	91344	3774 (2.20-2.20)
Clashscore	102246	4477 (2.20-2.20)
Ramachandran outliers	100387	4404 (2.20-2.20)
Sidechain outliers	100360	4405 (2.20-2.20)
RSRZ outliers	91569	3781 (2.20-2.20)

The table below summarises the geometric issues observed across the polymeric chains and their fit to the electron density. The red, orange, yellow and green segments on the lower bar indicate the fraction of residues that contain outliers for ≥ 3 , 2, 1 and 0 types of geometric quality criteria. A grey segment represents the fraction of residues that are not modelled. The numeric value for each fraction is indicated below the corresponding segment, with a dot representing fractions $\leq 5\%$. The upper red bar (where present) indicates the fraction of residues that have poor fit to the electron density. The numeric value is given above the bar.

Mol	Chain	Length	Quality of chain
1	A	594	<div> <div>4%</div> <div>85%</div> <div>11%</div> <div>• •</div> </div>
1	B	594	<div> <div>5%</div> <div>85%</div> <div>12%</div> <div>• •</div> </div>

2 Entry composition [i](#)

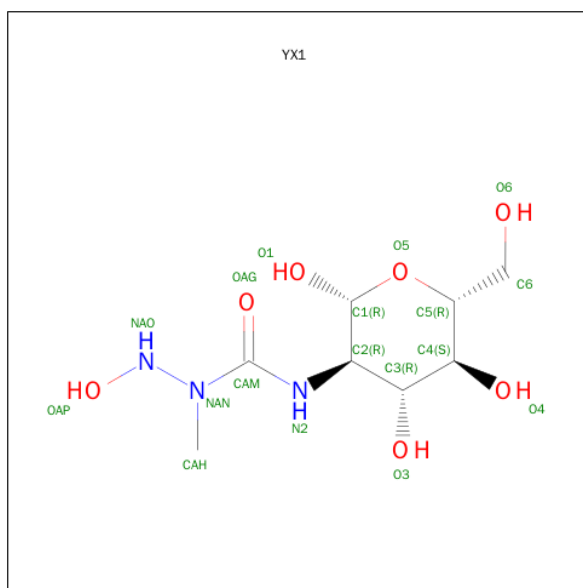
There are 4 unique types of molecules in this entry. The entry contains 9809 atoms, of which 0 are hydrogens and 0 are deuteriums.

In the tables below, the ZeroOcc column contains the number of atoms modelled with zero occupancy, the AltConf column contains the number of residues with at least one atom in alternate conformation and the Trace column contains the number of residues modelled with at most 2 atoms.

- Molecule 1 is a protein called O-GLCNACASE NAGJ.

Mol	Chain	Residues	Atoms					ZeroOcc	AltConf	Trace
1	A	584	Total	C	N	O	S	0	0	0
			4620	2908	756	939	17			
1	B	584	Total	C	N	O	S	0	0	0
			4620	2908	756	939	17			

- Molecule 2 is 2-DEOXY-2-[[[(2-HYDROXY-1-METHYLHYDRAZINO)CARBONYL]AMINO]-BETA-D-GLUCOPYRANOSE (three-letter code: YX1) (formula: C₈H₁₇N₃O₇).



Mol	Chain	Residues	Atoms				ZeroOcc	AltConf
2	A	1	Total	C	N	O	0	0
			18	8	3	7		
2	B	1	Total	C	N	O	0	0
			18	8	3	7		

- Molecule 3 is SULFATE ION (three-letter code: SO4) (formula: O₄S).



Mol	Chain	Residues	Atoms			ZeroOcc	AltConf
3	A	1	Total	O	S	0	0
			5	4	1		

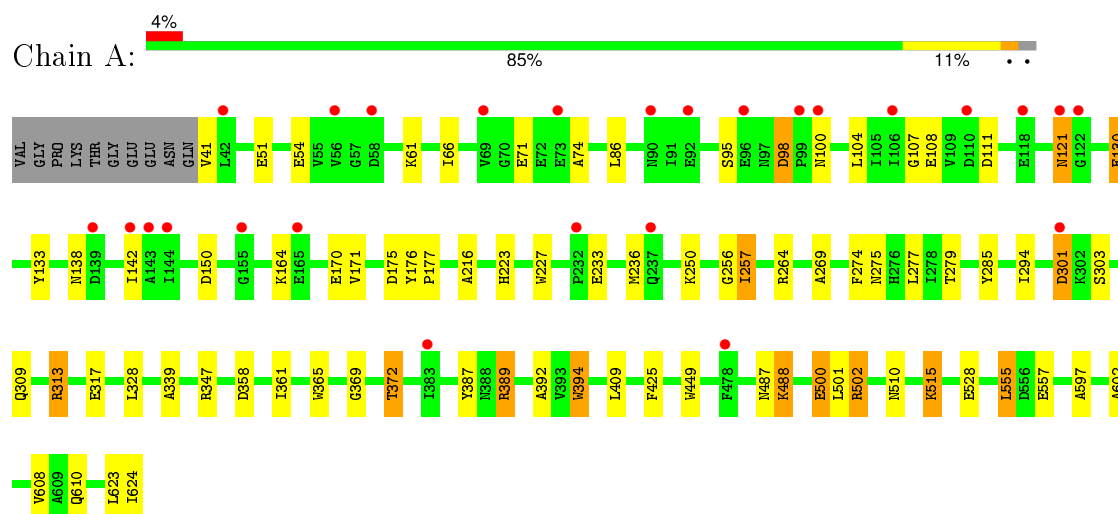
- Molecule 4 is water.

Mol	Chain	Residues	Atoms		ZeroOcc	AltConf
4	A	277	Total	O	0	0
			277	277		
4	B	251	Total	O	0	0
			251	251		

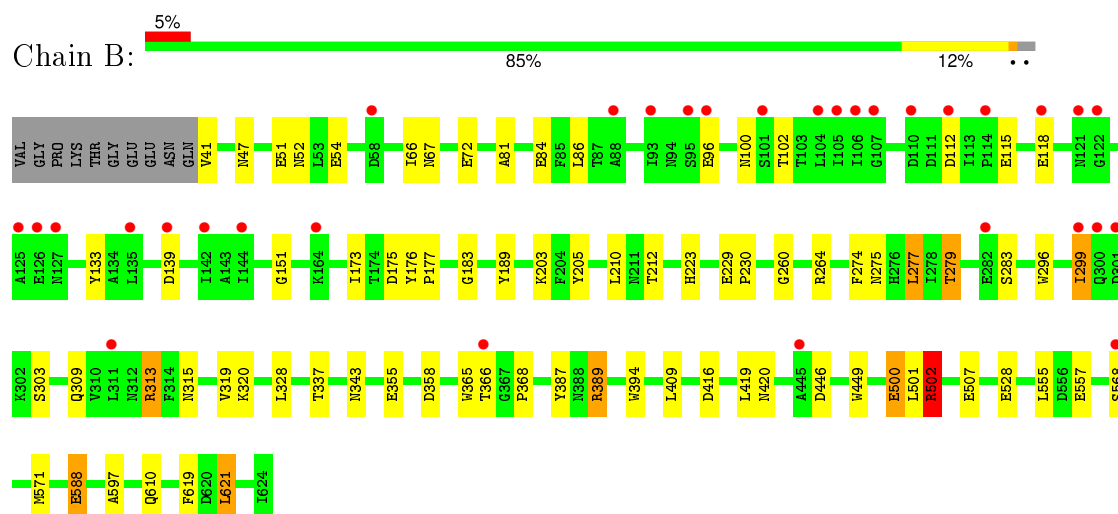
3 Residue-property plots

These plots are drawn for all protein, RNA and DNA chains in the entry. The first graphic for a chain summarises the proportions of errors displayed in the second graphic. The second graphic shows the sequence view annotated by issues in geometry and electron density. Residues are color-coded according to the number of geometric quality criteria for which they contain at least one outlier: green = 0, yellow = 1, orange = 2 and red = 3 or more. A red dot above a residue indicates a poor fit to the electron density ($RSRZ > 2$). Stretches of 2 or more consecutive residues without any outlier are shown as a green connector. Residues present in the sample, but not in the model, are shown in grey.

• Molecule 1: O-GLCNACASE NAGJ



• Molecule 1: O-GLCNACASE NAGJ



4 Data and refinement statistics

Property	Value	Source
Space group	I 21 21 21	Depositor
Cell constants a, b, c, α , β , γ	130.47Å 149.73Å 152.12Å 90.00° 90.00° 90.00°	Depositor
Resolution (Å)	19.91 – 2.20 19.87 – 2.20	Depositor EDS
% Data completeness (in resolution range)	99.5 (19.91-2.20) 99.6 (19.87-2.20)	Depositor EDS
R_{merge}	0.06	Depositor
R_{sym}	(Not available)	Depositor
$\langle I/\sigma(I) \rangle$ ¹	2.43 (at 2.19Å)	Xtriage
Refinement program	REFMAC 5.2.0019	Depositor
R, R_{free}	0.195 , 0.241 0.191 , 0.197	Depositor DCC
R_{free} test set	1503 reflections (2.04%)	DCC
Wilson B-factor (Å ²)	37.4	Xtriage
Anisotropy	0.119	Xtriage
Bulk solvent k_{sol} (e/Å ³), B_{sol} (Å ²)	0.31 , 39.9	EDS
Estimated twinning fraction	0.000 for -h,-l,-k	Xtriage
L-test for twinning ²	$\langle L \rangle = 0.50$, $\langle L^2 \rangle = 0.34$	Xtriage
Outliers	0 of 75220 reflections	Xtriage
F_o, F_c correlation	0.95	EDS
Total number of atoms	9809	wwPDB-VP
Average B, all atoms (Å ²)	44.0	wwPDB-VP

Xtriage's analysis on translational NCS is as follows: *The largest off-origin peak in the Patterson function is 3.28% of the height of the origin peak. No significant pseudotranslation is detected.*

¹Intensities estimated from amplitudes.

²Theoretical values of $\langle |L| \rangle$, $\langle L^2 \rangle$ for acentric reflections are 0.5, 0.375 respectively for untwinned datasets, and 0.333, 0.2 for perfectly twinned datasets.

5 Model quality

5.1 Standard geometry

Bond lengths and bond angles in the following residue types are not validated in this section: YX1, SO4

The Z score for a bond length (or angle) is the number of standard deviations the observed value is removed from the expected value. A bond length (or angle) with $|Z| > 5$ is considered an outlier worth inspection. RMSZ is the root-mean-square of all Z scores of the bond lengths (or angles).

Mol	Chain	Bond lengths		Bond angles	
		RMSZ	$\# Z > 5$	RMSZ	$\# Z > 5$
1	A	0.58	0/4716	0.66	4/6403 (0.1%)
1	B	0.64	3/4716 (0.1%)	0.67	3/6403 (0.0%)
All	All	0.61	3/9432 (0.0%)	0.66	7/12806 (0.1%)

Chiral center outliers are detected by calculating the chiral volume of a chiral center and verifying if the center is modelled as a planar moiety or with the opposite hand. A planarity outlier is detected by checking planarity of atoms in a peptide group, atoms in a mainchain group or atoms of a sidechain that are expected to be planar.

Mol	Chain	#Chirality outliers	#Planarity outliers
1	A	0	1

All (3) bond length outliers are listed below:

Mol	Chain	Res	Type	Atoms	Z	Observed(Å)	Ideal(Å)
1	B	115	GLU	CD-OE1	12.16	1.39	1.25
1	B	67	ASN	CG-OD1	6.93	1.39	1.24
1	B	115	GLU	CD-OE2	5.72	1.31	1.25

All (7) bond angle outliers are listed below:

Mol	Chain	Res	Type	Atoms	Z	Observed(°)	Ideal(°)
1	B	502	ARG	NE-CZ-NH1	11.37	125.98	120.30
1	B	502	ARG	NE-CZ-NH2	-9.08	115.76	120.30
1	A	502	ARG	NE-CZ-NH1	8.84	124.72	120.30
1	A	502	ARG	NE-CZ-NH2	-8.24	116.18	120.30
1	A	555	LEU	CA-CB-CG	6.37	129.95	115.30
1	A	555	LEU	CB-CG-CD1	5.74	120.76	111.00
1	B	277	LEU	CA-CB-CG	5.11	127.05	115.30

There are no chirality outliers.

All (1) planarity outliers are listed below:

Mol	Chain	Res	Type	Group
1	A	98	ASP	Peptide

5.2 Too-close contacts ⓘ

In the following table, the Non-H and H(model) columns list the number of non-hydrogen atoms and hydrogen atoms in the chain respectively. The H(added) column lists the number of hydrogen atoms added and optimized by MolProbity. The Clashes column lists the number of clashes within the asymmetric unit, whereas Symm-Clashes lists symmetry related clashes.

Mol	Chain	Non-H	H(model)	H(added)	Clashes	Symm-Clashes
1	A	4620	0	4412	44	0
1	B	4620	0	4412	43	0
2	A	18	0	17	1	0
2	B	18	0	17	2	0
3	A	5	0	0	0	0
4	A	277	0	0	3	0
4	B	251	0	0	9	0
All	All	9809	0	8858	87	0

The all-atom clashscore is defined as the number of clashes found per 1000 atoms (including hydrogen atoms). The all-atom clashscore for this structure is 5.

All (87) close contacts within the same asymmetric unit are listed below, sorted by their clash magnitude.

Atom-1	Atom-2	Interatomic distance (Å)	Clash overlap (Å)
1:A:502:ARG:O	1:A:502:ARG:HD3	1.62	0.98
1:B:502:ARG:HD3	1:B:502:ARG:O	1.67	0.93
1:A:389:ARG:HG2	1:A:389:ARG:HH11	1.35	0.90
1:A:227:TRP:HB2	1:A:257:ILE:HD11	1.57	0.87
1:B:296:TRP:HA	1:B:299:ILE:HD11	1.61	0.80
1:A:501:LEU:HD13	1:A:528:GLU:HG2	1.62	0.80
1:A:301:ASP:OD2	1:A:303:SER:OG	2.01	0.76
1:B:588:GLU:HG3	4:B:2223:HOH:O	1.86	0.74
1:B:502:ARG:C	1:B:502:ARG:HD3	2.09	0.72
1:A:502:ARG:C	1:A:502:ARG:HD3	2.09	0.69
1:A:557:GLU:HG3	1:A:602:ALA:HB3	1.75	0.68
1:B:274:PHE:CZ	1:B:313:ARG:HD2	2.29	0.67
1:B:387:TYR:HB3	1:B:389:ARG:HD2	1.77	0.66

Continued on next page...

Continued from previous page...

Atom-1	Atom-2	Interatomic distance (Å)	Clash overlap (Å)
1:A:108:GLU:O	1:A:111:ASP:HB2	1.96	0.66
1:A:389:ARG:HG2	1:A:389:ARG:NH1	2.05	0.65
1:B:597:ALA:O	4:B:2229:HOH:O	2.15	0.64
1:B:500:GLU:HG2	4:B:2163:HOH:O	1.98	0.63
1:B:47:ASN:ND2	4:B:2004:HOH:O	2.32	0.63
1:B:66:ILE:HG22	1:B:102:THR:HB	1.83	0.61
1:A:285:TYR:HD2	4:A:2074:HOH:O	1.82	0.61
1:A:275:ASN:O	1:A:279:THR:HG23	2.01	0.60
1:B:275:ASN:O	1:B:279:THR:HG23	2.01	0.60
1:B:507:GLU:HG2	4:B:2168:HOH:O	2.01	0.60
1:B:387:TYR:O	1:B:389:ARG:HG3	2.01	0.60
1:A:515:LYS:HG2	1:A:624:ILE:HG22	1.82	0.60
1:B:274:PHE:CE2	1:B:313:ARG:HD2	2.36	0.60
1:A:313:ARG:HD3	1:A:317:GLU:OE2	2.02	0.60
1:B:47:ASN:HD21	1:B:446:ASP:HB2	1.66	0.59
1:A:274:PHE:CZ	1:A:313:ARG:HD2	2.38	0.58
1:B:501:LEU:HD13	1:B:528:GLU:HG2	1.86	0.57
1:A:610:GLN:NE2	4:A:2265:HOH:O	2.38	0.57
1:B:260:GLY:HA3	1:B:299:ILE:CD1	2.36	0.56
1:B:619:PHE:HE2	1:B:621:LEU:HG	1.71	0.55
1:B:610:GLN:NE2	4:B:2239:HOH:O	2.40	0.55
1:A:233:GLU:HA	1:A:236:MET:HG3	1.88	0.54
1:A:133:TYR:CE2	1:A:175:ASP:HB3	2.43	0.54
1:A:557:GLU:HG3	1:A:602:ALA:CB	2.38	0.53
1:B:260:GLY:HA3	1:B:299:ILE:HD13	1.91	0.52
1:A:358:ASP:O	1:A:389:ARG:NH2	2.42	0.52
1:B:315:ASN:ND2	1:B:320:LYS:HE3	2.25	0.52
1:B:337:THR:HB	1:B:368:PRO:HA	1.91	0.51
1:A:216:ALA:HB2	1:A:256:GLY:HA3	1.94	0.50
1:B:41:VAL:N	4:B:2001:HOH:O	2.44	0.50
1:A:387:TYR:O	1:A:389:ARG:HG2	2.12	0.49
1:B:343:ASN:HB3	4:B:2078:HOH:O	2.12	0.49
1:A:392:ALA:HA	1:A:425:PHE:HB3	1.96	0.48
1:A:394:TRP:CD2	2:A:1626:YX1:HAH3	2.49	0.47
1:A:557:GLU:OE2	1:A:597:ALA:HA	2.14	0.47
1:A:369:GLY:HA3	1:A:372:THR:HG23	1.96	0.47
1:B:51:GLU:HG2	1:B:176:TYR:CZ	2.49	0.47
1:A:150:ASP:OD1	1:A:250:LYS:HD2	2.14	0.47
1:A:98:ASP:OD1	1:A:100:ASN:HA	2.15	0.46
1:B:133:TYR:CE2	1:B:175:ASP:HB3	2.51	0.46
2:B:1626:YX1:H1	2:B:1626:YX1:OAG	2.16	0.46

Continued on next page...

Continued from previous page...

Atom-1	Atom-2	Interatomic distance (Å)	Clash overlap (Å)
1:B:229:GLU:HA	1:B:230:PRO:HD2	1.80	0.46
1:A:274:PHE:CE2	1:A:313:ARG:HD2	2.50	0.46
1:B:394:TRP:CD2	2:B:1626:YX1:HAH3	2.51	0.46
1:A:177:PRO:HB3	1:A:449:TRP:CE3	2.51	0.45
1:A:339:ALA:O	1:A:347:ARG:HD2	2.15	0.45
1:A:264:ARG:HD2	1:A:269:ALA:HB1	1.98	0.45
1:A:358:ASP:HB2	1:A:361:ILE:HD12	1.99	0.45
1:A:500:GLU:CD	1:A:500:GLU:H	2.19	0.45
1:B:133:TYR:HB3	1:B:151:GLY:O	2.17	0.44
1:B:230:PRO:HB3	1:B:283:SER:OG	2.17	0.44
1:A:487:ASN:O	1:A:488:LYS:HB2	2.18	0.44
1:B:205:TYR:HB3	1:B:210:LEU:HB2	2.00	0.43
1:B:183:GLY:HA3	1:B:212:THR:O	2.18	0.43
1:A:257:ILE:CG2	1:A:294:ILE:HG12	2.48	0.43
1:B:588:GLU:CG	4:B:2223:HOH:O	2.56	0.43
1:A:623:LEU:HD22	1:B:189:TYR:CG	2.54	0.43
1:B:177:PRO:HB3	1:B:449:TRP:CE3	2.54	0.43
1:B:568:SER:O	1:B:571:MET:HB2	2.18	0.43
1:A:138:ASN:HA	1:A:170:GLU:HG2	2.01	0.42
1:B:619:PHE:CE2	1:B:621:LEU:HG	2.53	0.42
1:A:130:GLU:HG2	1:A:130:GLU:H	1.63	0.42
1:A:510:ASN:ND2	4:A:2183:HOH:O	2.53	0.42
1:A:74:ALA:HB2	1:A:107:GLY:HA2	2.01	0.42
1:A:557:GLU:CG	1:A:602:ALA:HB3	2.46	0.42
1:A:51:GLU:HG2	1:A:176:TYR:CZ	2.55	0.41
1:B:416:ASP:HB3	1:B:419:LEU:HD13	2.02	0.41
1:B:52:ASN:O	1:B:173:ILE:HA	2.20	0.41
1:B:358:ASP:O	1:B:389:ARG:NH2	2.51	0.41
1:A:104:LEU:HD13	1:A:142:ILE:HB	2.01	0.41
1:B:315:ASN:HA	1:B:319:VAL:HB	2.03	0.40
1:B:366:THR:HA	1:B:394:TRP:O	2.21	0.40
1:A:54:GLU:O	1:A:171:VAL:HA	2.21	0.40
1:B:81:ALA:HA	1:B:84:GLU:HG2	2.02	0.40

There are no symmetry-related clashes.

5.3 Torsion angles [i](#)

5.3.1 Protein backbone [i](#)

In the following table, the Percentiles column shows the percent Ramachandran outliers of the chain as a percentile score with respect to all X-ray entries followed by that with respect to entries of similar resolution.

The Analysed column shows the number of residues for which the backbone conformation was analysed, and the total number of residues.

Mol	Chain	Analysed	Favoured	Allowed	Outliers	Percentiles	
1	A	582/594 (98%)	558 (96%)	20 (3%)	4 (1%)	26	25
1	B	582/594 (98%)	562 (97%)	19 (3%)	1 (0%)	52	59
All	All	1164/1188 (98%)	1120 (96%)	39 (3%)	5 (0%)	39	42

All (5) Ramachandran outliers are listed below:

Mol	Chain	Res	Type
1	A	121	ASN
1	A	301	ASP
1	B	139	ASP
1	A	130	GLU
1	A	608	VAL

5.3.2 Protein sidechains [i](#)

In the following table, the Percentiles column shows the percent sidechain outliers of the chain as a percentile score with respect to all X-ray entries followed by that with respect to entries of similar resolution.

The Analysed column shows the number of residues for which the sidechain conformation was analysed, and the total number of residues.

Mol	Chain	Analysed	Rotameric	Outliers	Percentiles	
1	A	499/507 (98%)	476 (95%)	23 (5%)	33	40
1	B	499/507 (98%)	471 (94%)	28 (6%)	26	29
All	All	998/1014 (98%)	947 (95%)	51 (5%)	29	34

All (51) residues with a non-rotameric sidechain are listed below:

Mol	Chain	Res	Type
1	A	41	VAL

Continued on next page...

Continued from previous page...

Mol	Chain	Res	Type
1	A	61	LYS
1	A	66	ILE
1	A	71	GLU
1	A	86	LEU
1	A	95	SER
1	A	121	ASN
1	A	164	LYS
1	A	223	HIS
1	A	257	ILE
1	A	277	LEU
1	A	309	GLN
1	A	313	ARG
1	A	328	LEU
1	A	365	TRP
1	A	372	THR
1	A	389	ARG
1	A	394	TRP
1	A	409	LEU
1	A	488	LYS
1	A	500	GLU
1	A	515	LYS
1	A	555	LEU
1	B	54	GLU
1	B	72	GLU
1	B	86	LEU
1	B	96	GLU
1	B	100	ASN
1	B	112	ASP
1	B	118	GLU
1	B	203	LYS
1	B	223	HIS
1	B	264	ARG
1	B	277	LEU
1	B	279	THR
1	B	299	ILE
1	B	303	SER
1	B	309	GLN
1	B	313	ARG
1	B	328	LEU
1	B	355	GLU
1	B	365	TRP
1	B	389	ARG

Continued on next page...

Continued from previous page...

Mol	Chain	Res	Type
1	B	409	LEU
1	B	420	ASN
1	B	500	GLU
1	B	502	ARG
1	B	555	LEU
1	B	557	GLU
1	B	588	GLU
1	B	621	LEU

Some sidechains can be flipped to improve hydrogen bonding and reduce clashes. All (9) such sidechains are listed below:

Mol	Chain	Res	Type
1	A	309	GLN
1	A	510	ASN
1	A	610	GLN
1	B	47	ASN
1	B	315	ASN
1	B	420	ASN
1	B	591	GLN
1	B	592	ASN
1	B	610	GLN

5.3.3 RNA [i](#)

There are no RNA molecules in this entry.

5.4 Non-standard residues in protein, DNA, RNA chains [i](#)

There are no non-standard protein/DNA/RNA residues in this entry.

5.5 Carbohydrates [i](#)

There are no carbohydrates in this entry.

5.6 Ligand geometry [i](#)

3 ligands are modelled in this entry.

In the following table, the Counts columns list the number of bonds (or angles) for which Mogul statistics could be retrieved, the number of bonds (or angles) that are observed in the model and the number of bonds (or angles) that are defined in the chemical component dictionary. The Link column lists molecule types, if any, to which the group is linked. The Z score for a bond length (or angle) is the number of standard deviations the observed value is removed from the expected value. A bond length (or angle) with $|Z| > 2$ is considered an outlier worth inspection. RMSZ is the root-mean-square of all Z scores of the bond lengths (or angles).

Mol	Type	Chain	Res	Link	Bond lengths			Bond angles		
					Counts	RMSZ	$\# Z > 2$	Counts	RMSZ	$\# Z > 2$
2	YX1	A	1626	-	17,18,18	1.45	2 (11%)	16,25,25	1.34	2 (12%)
3	SO4	A	1627	-	4,4,4	0.10	0	6,6,6	0.23	0
2	YX1	B	1626	-	17,18,18	1.15	2 (11%)	16,25,25	1.58	2 (12%)

In the following table, the Chirals column lists the number of chiral outliers, the number of chiral centers analysed, the number of these observed in the model and the number defined in the chemical component dictionary. Similar counts are reported in the Torsion and Rings columns. '-' means no outliers of that kind were identified.

Mol	Type	Chain	Res	Link	Chirals	Torsions	Rings
2	YX1	A	1626	-	-	0/8/32/32	0/1/1/1
3	SO4	A	1627	-	-	0/0/0/0	0/0/0/0
2	YX1	B	1626	-	-	0/8/32/32	0/1/1/1

All (4) bond length outliers are listed below:

Mol	Chain	Res	Type	Atoms	Z	Observed(Å)	Ideal(Å)
2	B	1626	YX1	C2-N2	2.25	1.49	1.45
2	B	1626	YX1	C1-C2	2.59	1.56	1.53
2	A	1626	YX1	O5-C1	3.04	1.48	1.43
2	A	1626	YX1	C1-C2	3.52	1.57	1.53

All (4) bond angle outliers are listed below:

Mol	Chain	Res	Type	Atoms	Z	Observed(°)	Ideal(°)
2	B	1626	YX1	O5-C5-C4	-3.48	103.15	109.68
2	A	1626	YX1	C6-C5-C4	2.07	118.12	113.02
2	B	1626	YX1	OAG-CAM-NAN	3.74	123.45	120.23
2	A	1626	YX1	OAG-CAM-NAN	3.79	123.49	120.23

There are no chirality outliers.

There are no torsion outliers.

There are no ring outliers.

2 monomers are involved in 3 short contacts:

Mol	Chain	Res	Type	Clashes	Symm-Clashes
2	A	1626	YX1	1	0
2	B	1626	YX1	2	0

5.7 Other polymers [i](#)

There are no such residues in this entry.

5.8 Polymer linkage issues [i](#)

There are no chain breaks in this entry.

6 Fit of model and data ⓘ

6.1 Protein, DNA and RNA chains ⓘ

In the following table, the column labelled ‘#RSRZ> 2’ contains the number (and percentage) of RSRZ outliers, followed by percent RSRZ outliers for the chain as percentile scores relative to all X-ray entries and entries of similar resolution. The OWAB column contains the minimum, median, 95th percentile and maximum values of the occupancy-weighted average B-factor per residue. The column labelled ‘Q< 0.9’ lists the number of (and percentage) of residues with an average occupancy less than 0.9.

Mol	Chain	Analysed	<RSRZ>	#RSRZ>2		OWAB(Å ²)	Q<0.9
1	A	584/594 (98%)	0.12	26 (4%)	37 36	34, 43, 54, 66	1 (0%)
1	B	584/594 (98%)	0.18	32 (5%)	29 28	31, 43, 55, 69	0
All	All	1168/1188 (98%)	0.15	58 (4%)	32 32	31, 43, 55, 69	1 (0%)

All (58) RSRZ outliers are listed below:

Mol	Chain	Res	Type	RSRZ
1	A	144	ILE	7.8
1	B	122	GLY	5.8
1	A	121	ASN	5.7
1	A	110	ASP	4.9
1	B	144	ILE	4.8
1	B	112	ASP	4.5
1	A	99	PRO	4.1
1	A	122	GLY	4.0
1	B	106	ILE	3.7
1	B	121	ASN	3.7
1	B	300	GLN	3.7
1	A	142	ILE	3.6
1	B	139	ASP	3.5
1	A	42	LEU	3.4
1	B	110	ASP	3.3
1	A	143	ALA	3.3
1	A	90	ASN	3.3
1	B	126	GLU	3.2
1	A	118	GLU	3.2
1	B	105	ILE	3.1
1	B	299	ILE	3.1
1	A	100	ASN	3.0
1	B	301	ASP	3.0
1	B	142	ILE	3.0

Continued on next page...

Continued from previous page...

Mol	Chain	Res	Type	RSRZ
1	A	301	ASP	2.9
1	A	56	VAL	2.8
1	B	107	GLY	2.8
1	A	139	ASP	2.8
1	B	127	ASN	2.8
1	B	104	LEU	2.7
1	A	73	GLU	2.6
1	B	114	PRO	2.5
1	B	93	ILE	2.5
1	B	101	SER	2.5
1	B	118	GLU	2.5
1	A	155	GLY	2.4
1	B	96	GLU	2.4
1	B	164	LYS	2.4
1	A	96	GLU	2.4
1	B	311	LEU	2.4
1	B	568	SER	2.4
1	A	165	GLU	2.4
1	B	135	LEU	2.3
1	B	88	ALA	2.3
1	B	58	ASP	2.3
1	A	69	VAL	2.2
1	A	478	PHE	2.2
1	A	92	GLU	2.2
1	A	383	ILE	2.2
1	A	237	GLN	2.2
1	A	232	PRO	2.2
1	A	58	ASP	2.2
1	A	106	ILE	2.2
1	B	95	SER	2.2
1	B	125	ALA	2.2
1	B	366	THR	2.1
1	B	282	GLU	2.0
1	B	445	ALA	2.0

6.2 Non-standard residues in protein, DNA, RNA chains ⓘ

There are no non-standard protein/DNA/RNA residues in this entry.

6.3 Carbohydrates [i](#)

There are no carbohydrates in this entry.

6.4 Ligands [i](#)

In the following table, the Atoms column lists the number of modelled atoms in the group and the number defined in the chemical component dictionary. LLDF column lists the quality of electron density of the group with respect to its neighbouring residues in protein, DNA or RNA chains. The B-factors column lists the minimum, median, 95th percentile and maximum values of B factors of atoms in the group. The column labelled 'Q< 0.9' lists the number of atoms with occupancy less than 0.9.

Mol	Type	Chain	Res	Atoms	RSCC	RSR	LLDF	B-factors(\AA^2)	Q<0.9
2	YX1	A	1626	18/18	0.93	0.16	1.14	24,32,38,42	0
2	YX1	B	1626	18/18	0.94	0.11	-0.62	24,31,36,46	0
3	SO4	A	1627	5/5	0.93	0.24	-	67,68,69,73	0

6.5 Other polymers [i](#)

There are no such residues in this entry.