



# Full wwPDB X-ray Structure Validation Report ⓘ

Feb 1, 2016 – 02:05 PM GMT

PDB ID : 3VZC  
Title : Crystal structure of Sphingosine Kinase 1 with inhibitor  
Authors : Min, X.; Walker, N.P.; Wang, Z.  
Deposited on : 2012-10-11  
Resolution : 2.30 Å(reported)

This is a Full wwPDB X-ray Structure Validation Report for a publicly released PDB entry.  
We welcome your comments at [validation@mail.wwpdb.org](mailto:validation@mail.wwpdb.org)  
A user guide is available at  
<http://wwpdb.org/validation/2016/XrayValidationReportHelp>  
with specific help available everywhere you see the ⓘ symbol.

---

The following versions of software and data (see [references ⓘ](#)) were used in the production of this report:

MolProbity : 4.02b-467  
Mogul : 1.7 (RC4), CSD as536be (2015)  
Xtriage (Phenix) : 1.9-1692  
EDS : rb-20026688  
Percentile statistics : 20151230.v01 (using entries in the PDB archive December 30th 2015)  
Refmac : 5.8.0135  
CCP4 : 6.5.0  
Ideal geometry (proteins) : Engh & Huber (2001)  
Ideal geometry (DNA, RNA) : Parkinson et al. (1996)  
Validation Pipeline (wwPDB-VP) : trunk26865

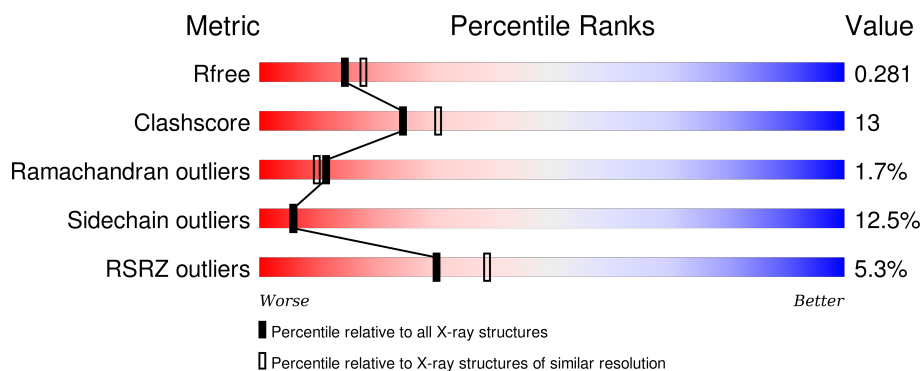
# 1 Overall quality at a glance

The following experimental techniques were used to determine the structure:

## *X-RAY DIFFRACTION*

The reported resolution of this entry is 2.30 Å.

Percentile scores (ranging between 0-100) for global validation metrics of the entry are shown in the following graphic. The table shows the number of entries on which the scores are based.



Metric	Whole archive (#Entries)	Similar resolution (#Entries, resolution range(Å))
$R_{free}$	91344	3852 (2.30-2.30)
Clashscore	102246	4452 (2.30-2.30)
Ramachandran outliers	100387	4410 (2.30-2.30)
Sidechain outliers	100360	4409 (2.30-2.30)
RSRZ outliers	91569	3857 (2.30-2.30)

The table below summarises the geometric issues observed across the polymeric chains and their fit to the electron density. The red, orange, yellow and green segments on the lower bar indicate the fraction of residues that contain outliers for  $\geq 3$ , 2, 1 and 0 types of geometric quality criteria. A grey segment represents the fraction of residues that are not modelled. The numeric value for each fraction is indicated below the corresponding segment, with a dot representing fractions  $\leq 5\%$ . The upper red bar (where present) indicates the fraction of residues that have poor fit to the electron density. The numeric value is given above the bar.

Mol	Chain	Length	Quality of chain
1	A	361	<div> <div>2%</div> <div>70% 22% . .</div> </div>
1	B	361	<div> <div>5%</div> <div>65% 23% 6% 6%</div> </div>
1	C	361	<div> <div>5%</div> <div>62% 25% 6% . 5%</div> </div>
1	D	361	<div> <div>2%</div> <div>72% 19% . . .</div> </div>
1	E	361	<div> <div>6%</div> <div>66% 24% . . 5%</div> </div>

*Continued on next page...*

*Continued from previous page...*

Mol	Chain	Length	Quality of chain
1	F	361	

The following table lists non-polymeric compounds, carbohydrate monomers and non-standard residues in protein, DNA, RNA chains that are outliers for geometric or electron-density-fit criteria:

Mol	Type	Chain	Res	Chirality	Geometry	Clashes	Electron density
2	UUL	C	1001	-	-	-	X

## 2 Entry composition

There are 4 unique types of molecules in this entry. The entry contains 16468 atoms, of which 0 are hydrogens and 0 are deuteriums.

In the tables below, the ZeroOcc column contains the number of atoms modelled with zero occupancy, the AltConf column contains the number of residues with at least one atom in alternate conformation and the Trace column contains the number of residues modelled with at most 2 atoms.

- Molecule 1 is a protein called Sphingosine kinase 1.

Mol	Chain	Residues	Atoms					ZeroOcc	AltConf	Trace
1	A	347	Total	C	N	O	S	0	0	0
			2694	1726	475	472	21			
1	B	340	Total	C	N	O	S	0	0	0
			2653	1702	467	464	20			
1	C	342	Total	C	N	O	S	0	0	0
			2664	1707	469	467	21			
1	D	348	Total	C	N	O	S	0	0	0
			2701	1731	476	473	21			
1	E	342	Total	C	N	O	S	0	0	0
			2663	1707	469	467	20			
1	F	344	Total	C	N	O	S	0	0	0
			2673	1712	471	469	21			

There are 30 discrepancies between the modelled and reference sequences:

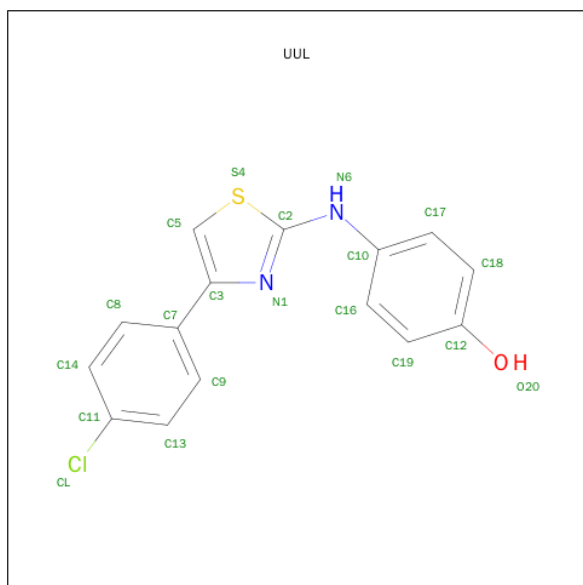
Chain	Residue	Modelled	Actual	Comment	Reference
A	4	GLY	-	EXPRESSION TAG	UNP Q9NYA1
A	5	ALA	-	EXPRESSION TAG	UNP Q9NYA1
A	6	MET	-	EXPRESSION TAG	UNP Q9NYA1
A	7	GLY	-	EXPRESSION TAG	UNP Q9NYA1
A	8	SER	-	EXPRESSION TAG	UNP Q9NYA1
B	4	GLY	-	EXPRESSION TAG	UNP Q9NYA1
B	5	ALA	-	EXPRESSION TAG	UNP Q9NYA1
B	6	MET	-	EXPRESSION TAG	UNP Q9NYA1
B	7	GLY	-	EXPRESSION TAG	UNP Q9NYA1
B	8	SER	-	EXPRESSION TAG	UNP Q9NYA1
C	4	GLY	-	EXPRESSION TAG	UNP Q9NYA1
C	5	ALA	-	EXPRESSION TAG	UNP Q9NYA1
C	6	MET	-	EXPRESSION TAG	UNP Q9NYA1
C	7	GLY	-	EXPRESSION TAG	UNP Q9NYA1
C	8	SER	-	EXPRESSION TAG	UNP Q9NYA1
D	4	GLY	-	EXPRESSION TAG	UNP Q9NYA1
D	5	ALA	-	EXPRESSION TAG	UNP Q9NYA1

*Continued on next page...*

Continued from previous page...

Chain	Residue	Modelled	Actual	Comment	Reference
D	6	MET	-	EXPRESSION TAG	UNP Q9NYA1
D	7	GLY	-	EXPRESSION TAG	UNP Q9NYA1
D	8	SER	-	EXPRESSION TAG	UNP Q9NYA1
E	4	GLY	-	EXPRESSION TAG	UNP Q9NYA1
E	5	ALA	-	EXPRESSION TAG	UNP Q9NYA1
E	6	MET	-	EXPRESSION TAG	UNP Q9NYA1
E	7	GLY	-	EXPRESSION TAG	UNP Q9NYA1
E	8	SER	-	EXPRESSION TAG	UNP Q9NYA1
F	4	GLY	-	EXPRESSION TAG	UNP Q9NYA1
F	5	ALA	-	EXPRESSION TAG	UNP Q9NYA1
F	6	MET	-	EXPRESSION TAG	UNP Q9NYA1
F	7	GLY	-	EXPRESSION TAG	UNP Q9NYA1
F	8	SER	-	EXPRESSION TAG	UNP Q9NYA1

- Molecule 2 is 4-{[4-(4-CHLOROPHENYL)-1,3-THIAZOL-2-YL]AMINO}PHENOL (three-letter code: UUL) (formula: C<sub>15</sub>H<sub>11</sub>ClN<sub>2</sub>OS).



Mol	Chain	Residues	Atoms						ZeroOcc	AltConf
2	A	1	Total 20	C 15	Cl 1	N 2	O 1	S 1	0	0
2	B	1	Total 20	C 15	Cl 1	N 2	O 1	S 1	0	0
2	C	1	Total 20	C 15	Cl 1	N 2	O 1	S 1	0	0
2	D	1	Total 20	C 15	Cl 1	N 2	O 1	S 1	0	0

Continued on next page...

Continued from previous page...

Mol	Chain	Residues	Atoms						ZeroOcc	AltConf
2	E	1	Total	C	Cl	N	O	S	0	0
			20	15	1	2	1	1		
2	F	1	Total	C	Cl	N	O	S	0	0
			20	15	1	2	1	1		

- Molecule 3 is 1,2-ETHANEDIOL (three-letter code: EDO) (formula: C<sub>2</sub>H<sub>6</sub>O<sub>2</sub>).



Mol	Chain	Residues	Atoms			ZeroOcc	AltConf
3	D	1	Total	C	O	0	0
			4	2	2		
3	F	1	Total	C	O	0	0
			4	2	2		

- Molecule 4 is water.

Mol	Chain	Residues	Atoms		ZeroOcc	AltConf
4	A	60	Total	O	0	0
			60	60		
4	B	53	Total	O	0	0
			53	53		
4	C	62	Total	O	0	0
			62	62		
4	D	35	Total	O	0	0
			35	35		
4	E	46	Total	O	0	0
			46	46		

Continued on next page...

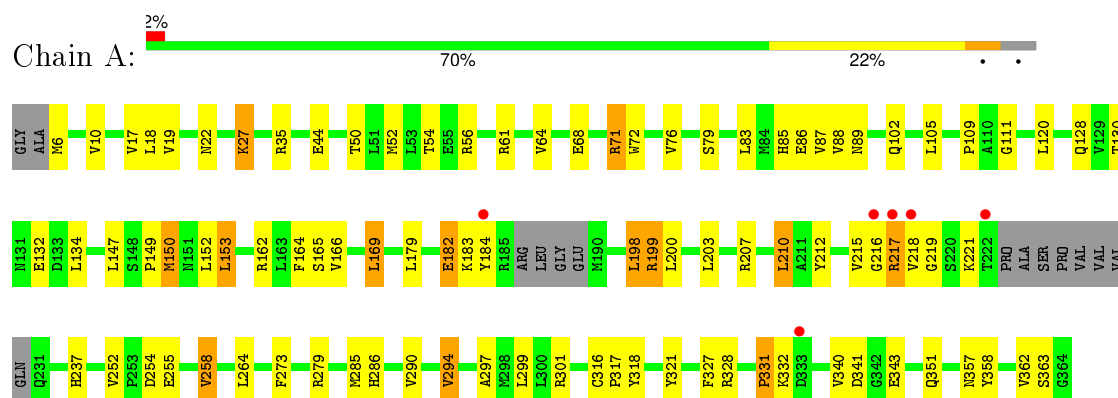
*Continued from previous page...*

Mol	Chain	Residues	Atoms		ZeroOcc	AltConf
4	F	36	Total	O	0	0
			36	36		

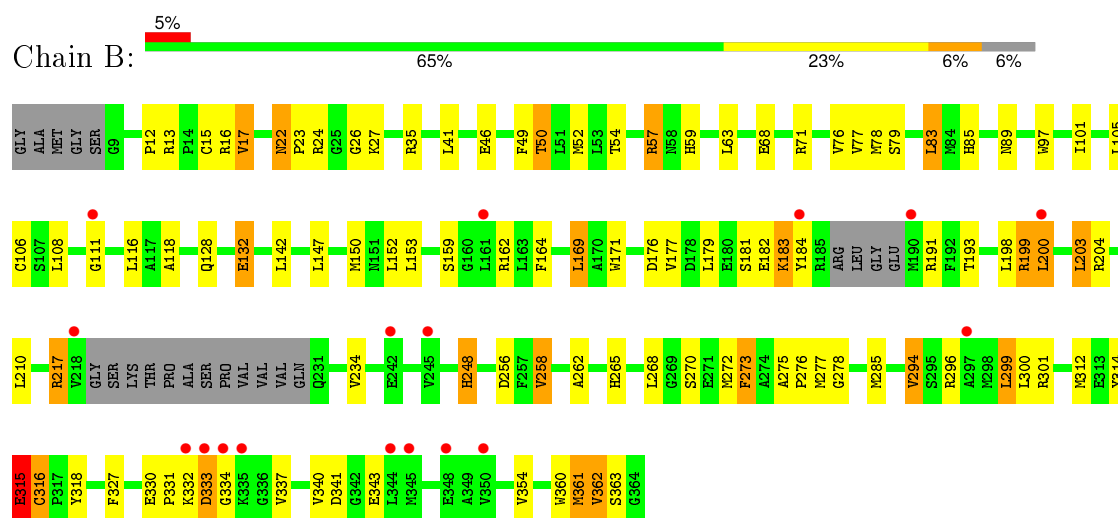
### 3 Residue-property plots

These plots are drawn for all protein, RNA and DNA chains in the entry. The first graphic for a chain summarises the proportions of errors displayed in the second graphic. The second graphic shows the sequence view annotated by issues in geometry and electron density. Residues are color-coded according to the number of geometric quality criteria for which they contain at least one outlier: green = 0, yellow = 1, orange = 2 and red = 3 or more. A red dot above a residue indicates a poor fit to the electron density ( $RSRZ > 2$ ). Stretches of 2 or more consecutive residues without any outlier are shown as a green connector. Residues present in the sample, but not in the model, are shown in grey.

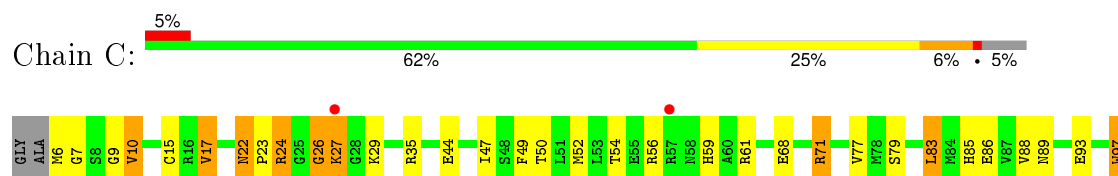
#### • Molecule 1: Sphingosine kinase 1



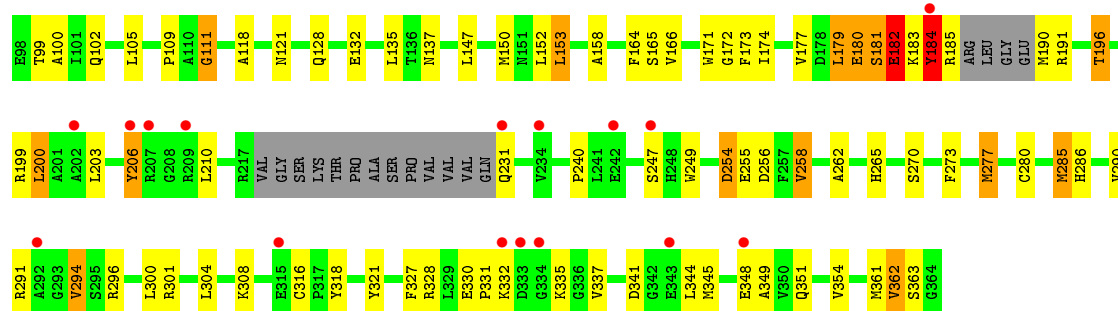
#### • Molecule 1: Sphingosine kinase 1



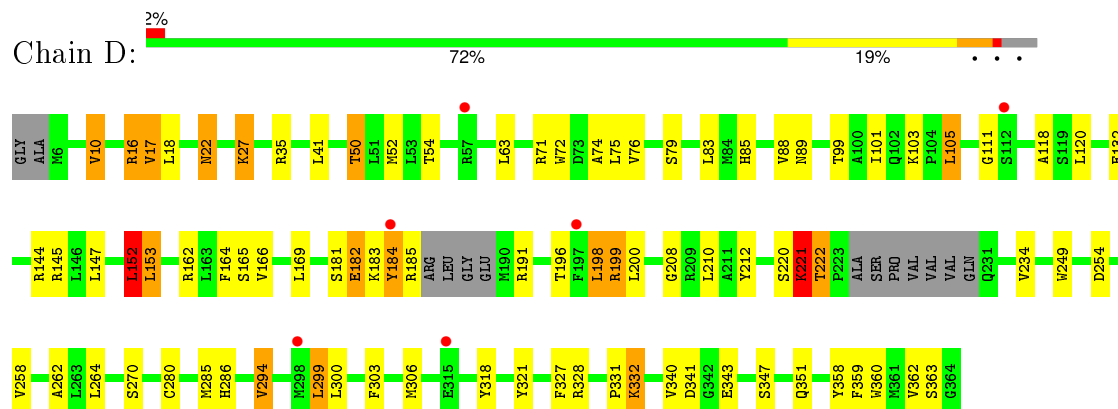
#### • Molecule 1: Sphingosine kinase 1



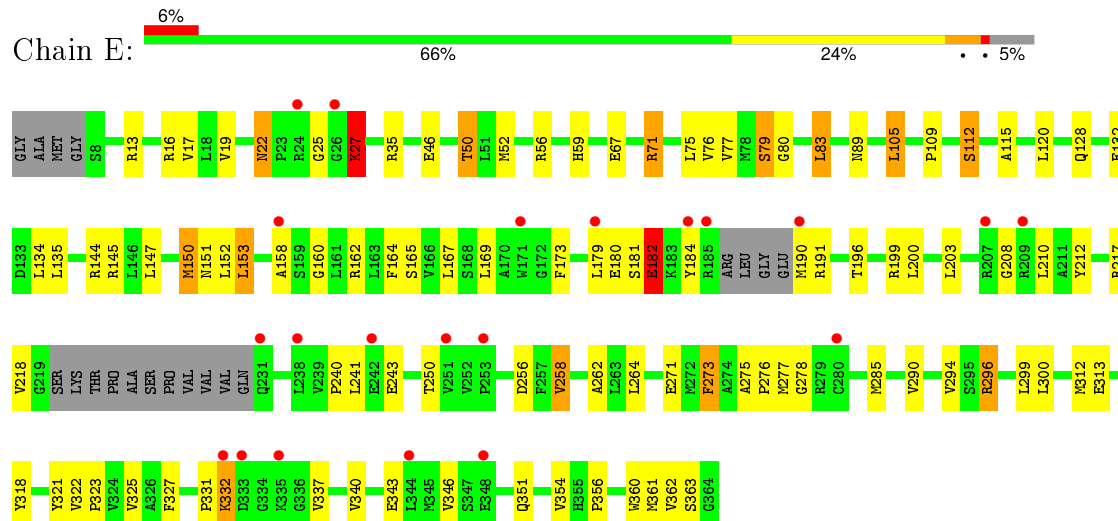




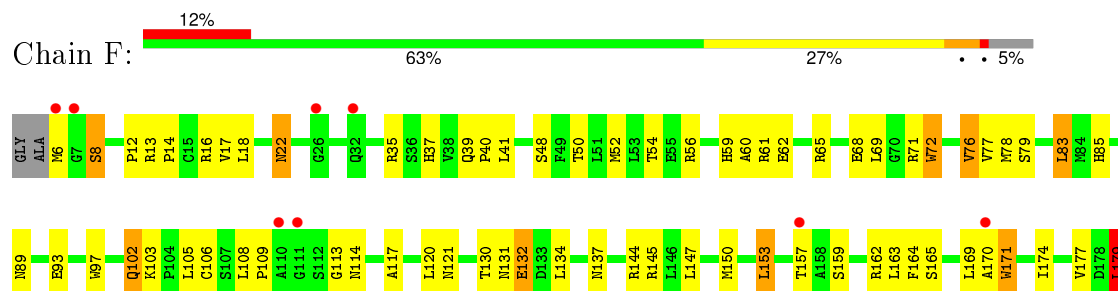
• Molecule 1: Sphingosine kinase 1

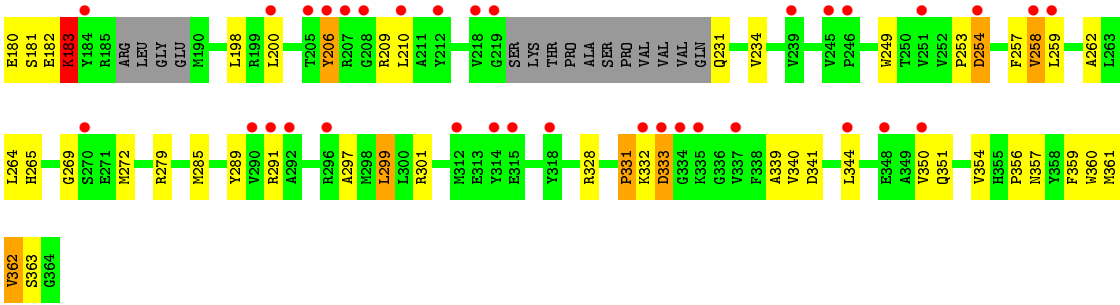


• Molecule 1: Sphingosine kinase 1



• Molecule 1: Sphingosine kinase 1





## 4 Data and refinement statistics

Property	Value	Source
Space group	P 21 21 21	Depositor
Cell constants a, b, c, $\alpha$ , $\beta$ , $\gamma$	102.22Å 106.61Å 226.18Å 90.00° 90.00° 90.00°	Depositor
Resolution (Å)	50.00 – 2.30 49.95 – 2.30	Depositor EDS
% Data completeness (in resolution range)	92.0 (50.00-2.30) 92.0 (49.95-2.30)	Depositor EDS
$R_{merge}$	(Not available)	Depositor
$R_{sym}$	0.06	Depositor
$\langle I/\sigma(I) \rangle$ <sup>1</sup>	2.70 (at 2.29Å)	Xtriage
Refinement program	REFMAC 5.6.0117	Depositor
R, $R_{free}$	0.229 , 0.285 0.227 , 0.281	Depositor DCC
$R_{free}$ test set	5084 reflections (5.27%)	DCC
Wilson B-factor (Å <sup>2</sup> )	40.2	Xtriage
Anisotropy	0.272	Xtriage
Bulk solvent $k_{sol}$ (e/Å <sup>3</sup> ), $B_{sol}$ (Å <sup>2</sup> )	0.34 , 34.1	EDS
Estimated twinning fraction	0.000 for k,h,-l	Xtriage
L-test for twinning <sup>2</sup>	$\langle  L  \rangle = 0.49$ , $\langle L^2 \rangle = 0.32$	Xtriage
Outliers	0 of 101479 reflections	Xtriage
$F_o, F_c$ correlation	0.94	EDS
Total number of atoms	16468	wwPDB-VP
Average B, all atoms (Å <sup>2</sup> )	44.0	wwPDB-VP

Xtriage's analysis on translational NCS is as follows: *The analyses of the Patterson function reveals a significant off-origin peak that is 60.74 % of the origin peak, indicating pseudo translational symmetry. The chance of finding a peak of this or larger height randomly in a structure without pseudo translational symmetry is equal to 1.4545e-05. The detected translational NCS is most likely also responsible for the elevated intensity ratio.*

<sup>1</sup>Intensities estimated from amplitudes.

<sup>2</sup>Theoretical values of  $\langle |L| \rangle$ ,  $\langle L^2 \rangle$  for acentric reflections are 0.5, 0.375 respectively for untwinned datasets, and 0.333, 0.2 for perfectly twinned datasets.

## 5 Model quality

### 5.1 Standard geometry

Bond lengths and bond angles in the following residue types are not validated in this section: UUL, EDO

The Z score for a bond length (or angle) is the number of standard deviations the observed value is removed from the expected value. A bond length (or angle) with  $|Z| > 5$  is considered an outlier worth inspection. RMSZ is the root-mean-square of all Z scores of the bond lengths (or angles).

Mol	Chain	Bond lengths		Bond angles	
		RMSZ	$\# Z  > 5$	RMSZ	$\# Z  > 5$
1	A	0.55	0/2755	0.74	1/3735 (0.0%)
1	B	0.56	3/2714 (0.1%)	0.72	1/3682 (0.0%)
1	C	0.56	3/2725 (0.1%)	0.72	0/3695
1	D	0.54	2/2763 (0.1%)	0.72	3/3747 (0.1%)
1	E	0.54	1/2724 (0.0%)	0.69	0/3695
1	F	0.55	5/2734 (0.2%)	0.68	1/3707 (0.0%)
All	All	0.55	14/16415 (0.1%)	0.71	6/22261 (0.0%)

Chiral center outliers are detected by calculating the chiral volume of a chiral center and verifying if the center is modelled as a planar moiety or with the opposite hand. A planarity outlier is detected by checking planarity of atoms in a peptide group, atoms in a mainchain group or atoms of a sidechain that are expected to be planar.

Mol	Chain	#Chirality outliers	#Planarity outliers
1	A	0	1
1	B	0	1
1	C	0	1
All	All	0	3

All (14) bond length outliers are listed below:

Mol	Chain	Res	Type	Atoms	Z	Observed(Å)	Ideal(Å)
1	E	360	TRP	CD2-CE2	5.66	1.48	1.41
1	C	171	TRP	CD2-CE2	5.44	1.47	1.41
1	F	171	TRP	CD2-CE2	5.35	1.47	1.41
1	B	360	TRP	CD2-CE2	5.28	1.47	1.41
1	B	171	TRP	CD2-CE2	5.27	1.47	1.41
1	C	97	TRP	CD2-CE2	5.20	1.47	1.41
1	F	360	TRP	CD2-CE2	5.17	1.47	1.41
1	D	360	TRP	CD2-CE2	5.06	1.47	1.41
1	F	97	TRP	CD2-CE2	5.06	1.47	1.41

*Continued on next page...*

*Continued from previous page...*

Mol	Chain	Res	Type	Atoms	Z	Observed(Å)	Ideal(Å)
1	D	249	TRP	CD2-CE2	5.06	1.47	1.41
1	F	72	TRP	CD2-CE2	5.04	1.47	1.41
1	B	97	TRP	CD2-CE2	5.02	1.47	1.41
1	C	249	TRP	CD2-CE2	5.01	1.47	1.41
1	F	249	TRP	CD2-CE2	5.01	1.47	1.41

All (6) bond angle outliers are listed below:

Mol	Chain	Res	Type	Atoms	Z	Observed(°)	Ideal(°)
1	D	198	LEU	CA-CB-CG	7.69	132.99	115.30
1	B	316	CYS	N-CA-C	-6.90	92.36	111.00
1	A	198	LEU	CA-CB-CG	5.85	128.76	115.30
1	D	152	LEU	CA-CB-CG	5.71	128.43	115.30
1	F	179	LEU	CA-CB-CG	5.22	127.30	115.30
1	D	35	ARG	NE-CZ-NH2	-5.10	117.75	120.30

There are no chirality outliers.

All (3) planarity outliers are listed below:

Mol	Chain	Res	Type	Group
1	A	331	PRO	Peptide
1	B	315	GLU	Peptide
1	C	26	GLY	Peptide

## 5.2 Too-close contacts ⓘ

In the following table, the Non-H and H(model) columns list the number of non-hydrogen atoms and hydrogen atoms in the chain respectively. The H(added) column lists the number of hydrogen atoms added and optimized by MolProbity. The Clashes column lists the number of clashes within the asymmetric unit, whereas Symm-Clashes lists symmetry related clashes.

Mol	Chain	Non-H	H(model)	H(added)	Clashes	Symm-Clashes
1	A	2694	0	2716	59	0
1	B	2653	0	2679	84	0
1	C	2664	0	2687	75	0
1	D	2701	0	2723	66	0
1	E	2663	0	2687	79	0
1	F	2673	0	2692	79	0
2	A	20	0	10	0	0
2	B	20	0	11	1	0
2	C	20	0	10	1	0

*Continued on next page...*

*Continued from previous page...*

Mol	Chain	Non-H	H(model)	H(added)	Clashes	Symm-Clashes
2	D	20	0	10	0	0
2	E	20	0	10	0	0
2	F	20	0	11	0	0
3	D	4	0	6	0	0
3	F	4	0	6	2	0
4	A	60	0	0	7	0
4	B	53	0	0	6	0
4	C	62	0	0	5	0
4	D	35	0	0	1	0
4	E	46	0	0	2	0
4	F	36	0	0	2	0
All	All	16468	0	16258	417	0

The all-atom clashscore is defined as the number of clashes found per 1000 atoms (including hydrogen atoms). The all-atom clashscore for this structure is 13.

All (417) close contacts within the same asymmetric unit are listed below, sorted by their clash magnitude.

Atom-1	Atom-2	Interatomic distance (Å)	Clash overlap (Å)
1:D:331:PRO:HA	1:D:332:LYS:HB2	1.17	1.15
1:B:262:ALA:HB1	1:B:285:MET:CE	1.91	1.00
1:F:150:MET:HE2	1:F:265:HIS:HE1	1.23	0.98
1:B:315:GLU:HB2	1:D:10:VAL:HG23	1.43	0.97
1:F:17:VAL:HG11	1:F:76:VAL:HG12	1.46	0.96
1:B:89:ASN:HD21	1:B:164:PHE:H	1.11	0.96
1:F:150:MET:CE	1:F:265:HIS:HE1	1.79	0.95
1:C:9:GLY:HA2	1:C:10:VAL:HG22	1.50	0.94
1:E:89:ASN:HD21	1:E:164:PHE:H	1.01	0.92
1:F:17:VAL:CG1	1:F:76:VAL:HG12	2.01	0.91
1:D:89:ASN:HD21	1:D:164:PHE:H	1.18	0.91
1:C:9:GLY:HA2	1:C:10:VAL:CG2	2.03	0.88
1:D:343:GLU:HB2	4:D:1125:HOH:O	1.72	0.88
1:F:17:VAL:HG11	1:F:76:VAL:CG1	2.06	0.85
1:F:264:LEU:CD1	1:F:285:MET:HE3	2.04	0.85
1:A:264:LEU:HD11	1:A:285:MET:HE3	1.59	0.84
1:C:89:ASN:HD21	1:C:164:PHE:H	1.21	0.84
1:F:89:ASN:HD21	1:F:164:PHE:H	1.24	0.83
1:D:16:ARG:HH11	1:D:16:ARG:HG2	1.43	0.83
1:D:199:ARG:HH11	1:D:199:ARG:HG3	1.44	0.82
1:A:182:GLU:O	1:A:182:GLU:HG2	1.79	0.81
1:F:177:VAL:O	1:F:181:SER:HB2	1.81	0.81

*Continued on next page...*

*Continued from previous page...*

Atom-1	Atom-2	Interatomic distance (Å)	Clash overlap (Å)
1:F:150:MET:HE2	1:F:265:HIS:CE1	2.14	0.80
1:A:264:LEU:CD1	1:A:285:MET:HE3	2.11	0.80
1:B:177:VAL:O	1:B:181:SER:HB2	1.82	0.79
1:C:285:MET:SD	1:C:354:VAL:HG22	2.22	0.79
1:D:264:LEU:HD12	1:D:285:MET:HE3	1.62	0.78
1:D:221:LYS:O	1:D:222:THR:CB	2.30	0.78
1:F:169:LEU:HD12	1:F:340:VAL:HG22	1.66	0.78
1:F:17:VAL:CG1	1:F:76:VAL:CG1	2.62	0.77
1:E:296:ARG:HH21	1:E:296:ARG:HB2	1.49	0.77
1:A:89:ASN:HD21	1:A:164:PHE:H	1.32	0.77
1:C:121:ASN:HD21	1:C:137:ASN:HD22	1.32	0.76
1:F:264:LEU:HD12	1:F:285:MET:HE3	1.68	0.75
1:C:182:GLU:O	1:C:182:GLU:OE1	2.05	0.75
1:E:50:THR:HG22	1:F:59:HIS:HE2	1.51	0.74
1:F:150:MET:CE	1:F:265:HIS:CE1	2.68	0.74
1:F:264:LEU:HD11	1:F:285:MET:HE3	1.69	0.74
1:D:199:ARG:HH11	1:D:199:ARG:CG	2.01	0.73
1:C:262:ALA:HB1	1:C:285:MET:CE	2.17	0.73
1:B:52:MET:HE3	1:C:52:MET:HE2	1.70	0.72
1:E:89:ASN:ND2	1:E:164:PHE:H	1.84	0.72
1:B:52:MET:HE2	1:C:52:MET:HE1	1.71	0.71
1:D:17:VAL:HG13	1:D:76:VAL:HG13	1.72	0.71
1:E:217:ARG:NH2	1:E:250:THR:OG1	2.21	0.71
1:D:331:PRO:CA	1:D:332:LYS:HB2	2.07	0.71
1:B:150:MET:CE	1:B:265:HIS:HE1	2.03	0.71
1:C:9:GLY:CA	1:C:10:VAL:HG22	2.21	0.70
1:B:296:ARG:HD3	4:B:1151:HOH:O	1.89	0.70
1:D:328:ARG:HH21	1:D:351:GLN:HE22	1.40	0.69
1:F:121:ASN:HD21	1:F:137:ASN:HD22	1.40	0.69
1:C:177:VAL:O	1:C:181:SER:HB2	1.91	0.69
1:A:10:VAL:HG11	1:E:313:GLU:O	1.91	0.69
1:B:262:ALA:HB1	1:B:285:MET:HE3	1.73	0.69
1:E:52:MET:HE1	1:F:52:MET:CE	2.23	0.69
1:A:18:LEU:HD11	1:A:52:MET:CE	2.23	0.69
1:C:331:PRO:HA	1:C:332:LYS:HB3	1.74	0.69
1:E:217:ARG:HH21	1:E:250:THR:HG1	1.42	0.68
1:C:262:ALA:HB1	1:C:285:MET:HE3	1.75	0.68
1:B:150:MET:HE1	1:B:265:HIS:HE1	1.59	0.68
1:E:181:SER:HB3	1:E:191:ARG:HD2	1.74	0.68
1:E:52:MET:CE	1:F:52:MET:CE	2.72	0.67
1:E:331:PRO:HA	1:E:332:LYS:CB	2.23	0.67

*Continued on next page...*

*Continued from previous page...*

Atom-1	Atom-2	Interatomic distance (Å)	Clash overlap (Å)
1:F:113:GLY:HA3	4:F:1115:HOH:O	1.93	0.67
1:D:331:PRO:HA	1:D:332:LYS:CB	2.07	0.66
1:A:199:ARG:CG	1:A:199:ARG:HH11	2.07	0.66
1:E:50:THR:CG2	1:F:59:HIS:HE2	2.08	0.66
1:B:315:GLU:CB	1:D:10:VAL:HG23	2.24	0.65
1:B:184:TYR:HA	1:B:191:ARG:HD3	1.78	0.65
1:F:169:LEU:CD1	1:F:340:VAL:HG22	2.26	0.65
1:A:216:GLY:HA2	4:A:1150:HOH:O	1.96	0.65
1:B:52:MET:CE	1:C:52:MET:CE	2.75	0.65
1:A:120:LEU:HD22	1:A:363:SER:HB3	1.77	0.64
1:A:316:CYS:HA	4:A:1131:HOH:O	1.97	0.64
1:D:16:ARG:NH1	1:D:16:ARG:HG2	2.08	0.64
1:A:297:ALA:O	1:A:301:ARG:HG3	1.97	0.64
1:D:262:ALA:HB1	1:D:285:MET:CE	2.27	0.64
1:B:52:MET:HE3	1:C:52:MET:CE	2.27	0.64
1:B:217:ARG:NH2	1:B:248:HIS:O	2.31	0.64
1:A:331:PRO:HA	1:A:332:LYS:HB3	1.80	0.64
1:F:328:ARG:HE	1:F:351:GLN:NE2	1.97	0.63
1:A:18:LEU:HD11	1:A:52:MET:HE3	1.81	0.63
1:A:286:HIS:HD2	1:A:321:TYR:OH	1.81	0.63
1:C:22:ASN:HD22	1:C:22:ASN:C	2.02	0.63
1:D:258:VAL:HG21	1:D:299:LEU:HD11	1.81	0.62
4:A:1137:HOH:O	1:E:278:GLY:HA3	1.99	0.62
1:C:26:GLY:H	1:C:111:GLY:HA2	1.64	0.62
1:B:315:GLU:HB2	1:D:10:VAL:CG2	2.24	0.62
1:C:86:GLU:HG3	4:C:1160:HOH:O	1.98	0.62
1:B:331:PRO:HA	1:B:332:LYS:CB	2.30	0.62
1:D:200:LEU:HD21	1:D:300:LEU:HB2	1.82	0.62
1:E:112:SER:HB3	1:E:191:ARG:HH21	1.66	0.61
1:E:56:ARG:HG2	1:E:59:HIS:HB2	1.82	0.61
1:B:285:MET:SD	1:B:354:VAL:HG22	2.41	0.61
1:E:296:ARG:NH2	1:E:296:ARG:HB2	2.16	0.61
1:B:59:HIS:NE2	1:C:50:THR:HG22	2.16	0.61
1:B:52:MET:CE	1:C:52:MET:HE1	2.31	0.61
1:C:88:VAL:HG21	1:C:166:VAL:HG11	1.83	0.61
1:B:89:ASN:ND2	1:B:164:PHE:H	1.92	0.61
1:D:181:SER:HB3	1:D:191:ARG:HH11	1.65	0.61
1:E:241:LEU:HD21	1:E:351:GLN:HG2	1.83	0.60
1:D:220:SER:C	1:D:221:LYS:HG2	2.20	0.60
1:C:362:VAL:HG22	4:C:1101:HOH:O	2.00	0.60
1:B:169:LEU:HD12	1:B:340:VAL:HG22	1.83	0.60

*Continued on next page...*



*Continued from previous page...*

Atom-1	Atom-2	Interatomic distance (Å)	Clash overlap (Å)
1:E:52:MET:CE	1:F:52:MET:HE1	2.32	0.60
1:B:116:LEU:HD21	1:B:361:MET:HE2	1.83	0.60
1:B:150:MET:HE1	1:B:265:HIS:CE1	2.37	0.60
1:B:17:VAL:HG13	1:B:76:VAL:HG13	1.83	0.59
1:D:50:THR:HG23	1:D:72:TRP:CH2	2.37	0.59
1:A:328:ARG:HH21	1:A:351:GLN:HE22	1.50	0.59
1:A:264:LEU:CD1	1:A:285:MET:CE	2.79	0.59
1:D:262:ALA:HB1	1:D:285:MET:HE2	1.84	0.59
1:B:116:LEU:HD21	1:B:361:MET:CE	2.32	0.59
1:E:343:GLU:OE2	1:E:343:GLU:HA	2.02	0.59
1:E:22:ASN:HD22	1:E:22:ASN:C	2.06	0.59
1:E:17:VAL:CG1	1:E:76:VAL:HG13	2.33	0.58
1:A:182:GLU:CG	1:A:182:GLU:O	2.52	0.58
1:C:68:GLU:O	1:C:71:ARG:HG3	2.04	0.58
1:B:50:THR:CG2	1:C:59:HIS:HE2	2.16	0.58
1:E:25:GLY:HA2	1:E:27:LYS:NZ	2.18	0.58
1:F:253:PRO:HA	4:F:1133:HOH:O	2.03	0.58
1:A:153:LEU:HB3	1:A:165:SER:HB3	1.85	0.58
1:F:62:GLU:HG2	1:F:65:ARG:NH2	2.19	0.57
1:A:331:PRO:HA	1:A:332:LYS:CB	2.34	0.57
1:A:255:GLU:OE1	1:A:332:LYS:NZ	2.37	0.57
1:B:22:ASN:HD22	1:B:22:ASN:C	2.07	0.57
1:E:173:PHE:CE1	1:E:196:THR:HG23	2.40	0.57
1:E:17:VAL:HG13	1:E:76:VAL:HG13	1.87	0.57
1:D:17:VAL:HG22	1:D:74:ALA:HB3	1.86	0.57
1:D:22:ASN:HD22	1:D:22:ASN:C	2.07	0.57
1:C:285:MET:SD	1:C:354:VAL:CG2	2.93	0.56
1:C:262:ALA:HB1	1:C:285:MET:HE2	1.85	0.56
1:C:196:THR:HG23	1:C:200:LEU:HD23	1.88	0.56
1:B:52:MET:CE	1:C:52:MET:HE2	2.34	0.56
1:B:150:MET:CE	1:B:265:HIS:CE1	2.86	0.56
1:E:153:LEU:HB3	1:E:165:SER:HB3	1.86	0.56
1:E:182:GLU:HG2	1:E:182:GLU:O	2.04	0.56
1:A:150:MET:HA	1:A:150:MET:HE2	1.88	0.55
1:B:315:GLU:HG3	1:B:316:CYS:H	1.71	0.55
1:B:13:ARG:NH1	1:B:46:GLU:OE2	2.40	0.55
1:E:89:ASN:HD21	1:E:164:PHE:N	1.86	0.55
1:F:262:ALA:HB1	1:F:285:MET:HE2	1.88	0.55
1:F:262:ALA:HB1	1:F:285:MET:CE	2.37	0.55
1:B:128:GLN:HE22	1:B:273:PHE:HB2	1.71	0.55
1:F:179:LEU:HD13	1:F:180:GLU:N	2.22	0.55

*Continued on next page...*

*Continued from previous page...*

Atom-1	Atom-2	Interatomic distance (Å)	Clash overlap (Å)
1:A:264:LEU:HD12	1:A:285:MET:CE	2.36	0.55
1:B:332:LYS:O	1:B:333:ASP:HB3	2.06	0.55
1:E:52:MET:HE2	1:F:52:MET:HE2	1.89	0.54
1:D:89:ASN:HD21	1:D:164:PHE:N	1.96	0.54
1:C:300:LEU:O	1:C:304:LEU:HG	2.07	0.54
1:B:16:ARG:HD2	1:B:71:ARG:O	2.08	0.54
1:B:276:PRO:HG3	1:B:312:MET:HG3	1.88	0.54
1:A:19:VAL:HG22	1:A:76:VAL:HG22	1.90	0.54
1:D:54:THR:O	1:D:54:THR:HG23	2.09	0.53
1:C:254:ASP:CG	1:C:291:ARG:HD2	2.28	0.53
1:C:328:ARG:HE	1:C:351:GLN:NE2	2.05	0.53
1:E:363:SER:HB2	4:E:1107:HOH:O	2.08	0.53
1:F:114:ASN:HB3	1:F:117:ALA:HB3	1.89	0.53
1:D:328:ARG:HE	1:D:351:GLN:NE2	2.05	0.53
1:B:50:THR:HG22	1:C:59:HIS:HE2	1.73	0.53
1:B:22:ASN:HD21	1:B:24:ARG:HB2	1.73	0.53
1:F:37:HIS:CE1	1:F:132:GLU:HB3	2.43	0.53
1:F:279:ARG:HG3	3:F:1002:EDO:O2	2.09	0.53
1:D:18:LEU:HD11	1:D:52:MET:CE	2.39	0.53
1:D:294:VAL:HG13	1:D:318:TYR:CB	2.38	0.53
1:E:120:LEU:HD22	1:E:363:SER:HB3	1.90	0.52
1:F:22:ASN:HD22	1:F:22:ASN:C	2.11	0.52
1:E:169:LEU:HD12	1:E:340:VAL:HG22	1.91	0.52
1:B:301:ARG:HD3	1:B:314:TYR:CE2	2.44	0.52
1:F:89:ASN:HD21	1:F:164:PHE:N	2.02	0.52
1:F:206:TYR:N	1:F:206:TYR:CD1	2.77	0.52
1:B:262:ALA:HB1	1:B:285:MET:HE2	1.83	0.52
1:E:52:MET:CE	1:F:52:MET:HE2	2.38	0.52
1:A:18:LEU:HD11	1:A:52:MET:HE1	1.92	0.52
1:B:22:ASN:ND2	1:B:24:ARG:H	2.07	0.52
1:C:88:VAL:HG21	1:C:166:VAL:CG1	2.39	0.52
1:C:179:LEU:HG	1:C:344:LEU:HD13	1.91	0.52
1:F:254:ASP:OD1	1:F:291:ARG:HD2	2.10	0.52
1:E:181:SER:HB3	1:E:191:ARG:HH11	1.74	0.52
1:C:22:ASN:HD21	1:C:24:ARG:HB2	1.75	0.52
1:A:54:THR:HG23	1:A:54:THR:O	2.10	0.52
1:B:314:TYR:O	1:B:315:GLU:O	2.27	0.52
1:E:77:VAL:CG1	1:E:83:LEU:HB3	2.40	0.51
1:D:208:GLY:HA2	1:D:332:LYS:HG3	1.92	0.51
1:C:331:PRO:HA	1:C:332:LYS:CB	2.38	0.51
1:E:200:LEU:HD21	1:E:300:LEU:HB2	1.93	0.51

*Continued on next page...*

*Continued from previous page...*

Atom-1	Atom-2	Interatomic distance (Å)	Clash overlap (Å)
1:D:118:ALA:HB2	1:D:270:SER:HA	1.93	0.51
1:D:264:LEU:CD1	1:D:285:MET:HE3	2.37	0.51
1:D:280:CYS:SG	1:D:286:HIS:CE1	3.04	0.51
1:D:152:LEU:CD2	1:D:164:PHE:HB3	2.40	0.51
1:F:144:ARG:O	1:F:145:ARG:HB2	2.11	0.51
1:D:286:HIS:HD2	1:D:321:TYR:OH	1.94	0.51
1:C:301:ARG:HD3	4:C:1159:HOH:O	2.10	0.51
1:E:52:MET:HE1	1:F:52:MET:HE1	1.93	0.51
1:C:128:GLN:HE22	1:C:273:PHE:HB2	1.76	0.51
1:C:173:PHE:CE2	1:C:199:ARG:HB3	2.46	0.50
1:F:359:PHE:HE2	1:F:361:MET:HE2	1.76	0.50
1:F:106:CYS:HB2	1:F:362:VAL:HG13	1.92	0.50
1:E:150:MET:HA	1:E:150:MET:HE3	1.94	0.50
1:B:150:MET:HG3	1:B:361:MET:HG3	1.94	0.50
1:A:68:GLU:O	1:A:71:ARG:HG3	2.11	0.50
1:D:120:LEU:HD22	1:D:363:SER:HB3	1.94	0.50
1:D:75:LEU:HB2	1:D:105:LEU:HD12	1.92	0.50
1:F:258:VAL:HG21	1:F:299:LEU:HD11	1.93	0.50
1:E:240:PRO:HG2	1:E:243:GLU:HG3	1.93	0.49
1:B:57:ARG:HA	4:B:1129:HOH:O	2.12	0.49
1:F:297:ALA:HB1	1:F:301:ARG:HH12	1.77	0.49
1:C:290:VAL:CG1	1:C:294:VAL:HG21	2.42	0.49
1:F:16:ARG:HB3	1:F:48:SER:HB2	1.93	0.49
1:C:185:ARG:HA	1:C:190:MET:SD	2.51	0.49
1:D:196:THR:O	1:D:200:LEU:HB2	2.12	0.49
1:D:294:VAL:HG13	1:D:318:TYR:HB2	1.95	0.49
1:E:275:ALA:O	1:E:277:MET:O	2.30	0.49
1:A:237:HIS:HD2	4:A:1107:HOH:O	1.95	0.49
1:A:199:ARG:HG3	1:A:199:ARG:HH11	1.75	0.49
1:A:258:VAL:HG22	1:A:290:VAL:HB	1.94	0.49
1:C:196:THR:HG23	1:C:200:LEU:CD2	2.42	0.49
1:F:12:PRO:O	1:F:145:ARG:NE	2.41	0.49
1:A:128:GLN:HE22	1:A:273:PHE:HB2	1.78	0.49
1:C:335:LYS:HG3	1:C:348:GLU:HG3	1.94	0.49
1:A:264:LEU:HD12	1:A:285:MET:HE3	1.94	0.49
1:C:285:MET:HE1	1:C:327:PHE:CD2	2.48	0.49
1:F:153:LEU:HB3	1:F:165:SER:HB3	1.95	0.48
1:A:149:PRO:HB2	1:A:357:ASN:HB3	1.95	0.48
1:D:118:ALA:CB	1:D:270:SER:HA	2.43	0.48
1:D:85:HIS:HD2	1:D:341:ASP:OD2	1.96	0.48
1:F:174:ILE:HD13	1:F:259:LEU:HD22	1.93	0.48

*Continued on next page...*

*Continued from previous page...*

Atom-1	Atom-2	Interatomic distance (Å)	Clash overlap (Å)
1:E:27:LYS:HE3	1:E:27:LYS:HA	1.96	0.48
1:E:264:LEU:CD1	1:E:285:MET:HE3	2.43	0.48
1:A:264:LEU:HD11	1:A:285:MET:CE	2.37	0.48
1:F:359:PHE:HE2	1:F:361:MET:CE	2.27	0.48
1:A:85:HIS:HD2	1:A:341:ASP:OD2	1.96	0.48
1:B:331:PRO:HA	1:B:332:LYS:HB2	1.96	0.48
1:C:172:GLY:HA2	1:C:206:TYR:CE1	2.50	0.47
1:D:182:GLU:HG2	1:D:182:GLU:O	2.14	0.47
1:D:200:LEU:HD11	1:D:299:LEU:HB3	1.96	0.47
1:A:216:GLY:CA	4:A:1150:HOH:O	2.57	0.47
1:F:120:LEU:HD22	1:F:363:SER:HB3	1.97	0.47
1:C:182:GLU:CG	1:C:182:GLU:O	2.62	0.47
1:E:83:LEU:HA	1:E:83:LEU:HD23	1.73	0.47
1:B:183:LYS:H	1:B:183:LYS:HD3	1.80	0.47
1:F:269:GLY:H	1:F:272:MET:HB2	1.79	0.47
1:D:169:LEU:HD12	1:D:340:VAL:HG22	1.96	0.47
1:B:77:VAL:CG1	1:B:83:LEU:HB3	2.45	0.47
1:F:150:MET:HE3	3:F:1002:EDO:O1	2.15	0.47
1:F:39:GLN:N	1:F:40:PRO:HD2	2.30	0.47
1:D:303:PHE:O	1:D:306:MET:HB3	2.15	0.47
1:A:61:ARG:HD3	1:A:86:GLU:OE2	2.14	0.47
1:F:157:THR:HG22	1:F:350:VAL:HG22	1.95	0.47
1:E:262:ALA:HB1	1:E:285:MET:CE	2.45	0.47
1:F:109:PRO:HG3	1:F:134:LEU:HG	1.97	0.47
1:C:285:MET:HE1	1:C:327:PHE:CE2	2.50	0.47
1:E:19:VAL:HG22	1:E:76:VAL:HG22	1.97	0.47
1:E:173:PHE:HE1	1:E:196:THR:HG23	1.77	0.46
1:F:171:TRP:CZ2	1:F:331:PRO:HG3	2.50	0.46
1:D:17:VAL:CG1	1:D:76:VAL:HG13	2.43	0.46
1:E:25:GLY:HA2	1:E:27:LYS:HZ1	1.79	0.46
1:A:71:ARG:HD3	1:A:72:TRP:CE2	2.50	0.46
1:E:109:PRO:HG3	1:E:134:LEU:HG	1.98	0.46
1:E:285:MET:SD	1:E:354:VAL:HG22	2.54	0.46
1:A:219:GLY:HA2	1:E:356:PRO:O	2.16	0.46
1:A:217:ARG:HD3	1:A:217:ARG:H	1.80	0.46
1:D:18:LEU:HD11	1:D:52:MET:HE3	1.96	0.46
1:E:294:VAL:HG22	1:E:318:TYR:HB3	1.96	0.46
1:B:22:ASN:HD22	1:B:24:ARG:H	1.62	0.46
1:C:85:HIS:HD2	1:C:341:ASP:OD2	1.99	0.46
1:F:78:MET:HA	1:F:108:LEU:O	2.15	0.46
1:B:54:THR:HG23	1:B:54:THR:O	2.16	0.46

*Continued on next page...*

*Continued from previous page...*

Atom-1	Atom-2	Interatomic distance (Å)	Clash overlap (Å)
1:F:85:HIS:HD2	1:F:341:ASP:OD2	1.99	0.46
1:F:264:LEU:HD11	1:F:285:MET:CE	2.42	0.46
1:B:22:ASN:HD22	1:B:23:PRO:N	2.14	0.46
1:B:77:VAL:HG13	1:B:83:LEU:HD13	1.97	0.46
1:B:85:HIS:HD2	1:B:341:ASP:OD2	1.98	0.46
1:C:286:HIS:HD2	1:C:321:TYR:OH	1.98	0.46
1:F:356:PRO:O	1:F:357:ASN:C	2.54	0.46
1:B:272:MET:HE3	2:B:1001:UUL:H2	1.98	0.46
1:B:181:SER:HB3	1:B:191:ARG:HH11	1.81	0.46
1:A:207:ARG:O	1:A:332:LYS:HB3	2.16	0.46
1:E:77:VAL:HG13	1:E:83:LEU:HD13	1.98	0.46
1:B:118:ALA:CB	1:B:270:SER:HA	2.45	0.46
1:F:68:GLU:HB3	1:F:71:ARG:HD2	1.98	0.46
1:A:6:MET:HB3	4:A:1129:HOH:O	2.15	0.45
1:C:361:MET:HE2	1:C:361:MET:HB2	1.74	0.45
1:E:331:PRO:HA	1:E:332:LYS:HB3	1.98	0.45
1:E:343:GLU:OE2	1:E:343:GLU:CA	2.64	0.45
1:F:183:LYS:O	1:F:183:LYS:HG2	2.16	0.45
1:F:289:TYR:HE1	1:F:291:ARG:HG2	1.81	0.45
1:C:27:LYS:CD	1:C:184:TYR:HB3	2.46	0.45
1:B:363:SER:HB2	4:B:1102:HOH:O	2.15	0.45
1:D:27:LYS:O	1:D:27:LYS:HE3	2.17	0.45
1:D:199:ARG:NH1	1:D:199:ARG:CG	2.70	0.45
1:E:361:MET:HB2	1:E:361:MET:HE2	1.82	0.45
1:D:212:TYR:HA	1:D:327:PHE:HA	1.99	0.45
1:D:101:ILE:HG13	1:D:359:PHE:HB3	1.98	0.45
1:F:17:VAL:HG12	1:F:76:VAL:CG1	2.47	0.45
1:D:152:LEU:HD21	1:D:164:PHE:HB3	1.99	0.45
1:B:181:SER:HB3	1:B:191:ARG:NH1	2.32	0.45
1:A:294:VAL:HG13	1:A:318:TYR:HB2	1.98	0.45
1:B:150:MET:HE2	1:B:265:HIS:HE1	1.81	0.45
1:E:208:GLY:HA2	1:E:332:LYS:HB3	1.99	0.44
1:C:24:ARG:O	1:C:27:LYS:HA	2.16	0.44
1:B:68:GLU:HB3	1:B:71:ARG:HD2	1.99	0.44
1:C:258:VAL:HG22	1:C:290:VAL:HB	1.98	0.44
1:E:52:MET:HE2	1:F:52:MET:CE	2.43	0.44
1:E:294:VAL:HG22	1:E:318:TYR:CB	2.47	0.44
1:B:142:LEU:HA	1:B:362:VAL:HG21	1.98	0.44
1:A:328:ARG:HE	1:A:351:GLN:NE2	2.15	0.44
1:D:153:LEU:HB3	1:D:165:SER:HB3	2.00	0.44
1:B:150:MET:HE2	1:B:265:HIS:CE1	2.52	0.44

*Continued on next page...*

*Continued from previous page...*

Atom-1	Atom-2	Interatomic distance (Å)	Clash overlap (Å)
1:C:109:PRO:O	1:C:135:LEU:HD13	2.18	0.44
1:B:12:PRO:O	1:B:15:CYS:HB3	2.17	0.44
1:D:262:ALA:HB1	1:D:285:MET:HE1	1.99	0.44
1:E:150:MET:HE2	4:E:1110:HOH:O	2.16	0.44
1:C:286:HIS:HE1	4:C:1112:HOH:O	2.00	0.44
1:B:268:LEU:HB3	1:B:272:MET:HE3	2.00	0.44
1:E:75:LEU:HB2	1:E:105:LEU:HD12	1.99	0.44
1:E:321:TYR:CE2	1:E:323:PRO:HD3	2.53	0.44
1:B:176:ASP:OD2	1:B:199:ARG:NH1	2.51	0.44
1:A:64:VAL:HG21	1:A:87:VAL:HG13	1.99	0.44
1:D:184:TYR:O	1:D:185:ARG:C	2.56	0.44
1:A:71:ARG:HD3	1:A:72:TRP:NE1	2.33	0.44
1:F:61:ARG:NH2	1:F:93:GLU:OE2	2.44	0.44
1:B:78:MET:HA	1:B:108:LEU:O	2.18	0.44
1:C:150:MET:CE	1:C:265:HIS:HE1	2.31	0.44
1:F:18:LEU:HB2	1:F:72:TRP:CE2	2.52	0.44
1:D:50:THR:HG23	1:D:72:TRP:CZ3	2.53	0.43
1:B:26:GLY:H	1:B:111:GLY:HA2	1.83	0.43
1:C:118:ALA:CB	1:C:270:SER:HA	2.48	0.43
1:A:343:GLU:HB3	4:A:1157:HOH:O	2.18	0.43
1:F:359:PHE:CE2	1:F:361:MET:HE2	2.53	0.43
1:A:210:LEU:HD13	1:A:252:VAL:HG21	2.01	0.43
1:E:331:PRO:HA	1:E:332:LYS:HB2	1.97	0.43
1:E:262:ALA:HB1	1:E:285:MET:HE2	1.99	0.43
1:E:264:LEU:HD11	1:E:285:MET:HE3	1.99	0.43
1:E:115:ALA:HB3	1:E:167:LEU:HD21	1.99	0.43
1:A:182:GLU:OE1	1:A:183:LYS:HE2	2.19	0.43
1:C:109:PRO:HD2	1:C:135:LEU:HD12	1.99	0.43
1:D:16:ARG:CG	1:D:16:ARG:HH11	2.20	0.43
1:F:54:THR:HG21	1:F:60:ALA:HB2	2.00	0.43
1:E:128:GLN:HE22	1:E:273:PHE:HB2	1.84	0.43
1:C:29:LYS:HA	4:C:1104:HOH:O	2.19	0.43
1:A:27:LYS:O	1:A:27:LYS:HG3	2.18	0.43
1:E:150:MET:HA	1:E:150:MET:CE	2.48	0.43
1:E:109:PRO:HD2	1:E:135:LEU:HA	2.01	0.43
1:F:130:THR:OG1	1:F:131:ASN:N	2.52	0.43
1:A:18:LEU:CD1	1:A:52:MET:CE	2.96	0.42
1:B:17:VAL:O	1:B:49:PHE:HA	2.19	0.42
1:D:182:GLU:OE1	1:D:183:LYS:HG2	2.18	0.42
1:C:158:ALA:HB2	1:C:349:ALA:HB3	2.01	0.42
1:C:77:VAL:CG1	1:C:83:LEU:HB3	2.50	0.42

*Continued on next page...*

*Continued from previous page...*

Atom-1	Atom-2	Interatomic distance (Å)	Clash overlap (Å)
1:B:275:ALA:O	1:B:277:MET:O	2.37	0.42
1:B:200:LEU:HD21	1:B:300:LEU:HB2	2.01	0.42
1:F:332:LYS:O	1:F:333:ASP:HB2	2.18	0.42
1:C:22:ASN:ND2	1:C:22:ASN:C	2.71	0.42
1:A:52:MET:HE3	1:A:52:MET:HB2	1.91	0.42
1:A:109:PRO:HG3	1:A:134:LEU:HG	2.01	0.42
1:C:181:SER:HB3	1:C:191:ARG:NH1	2.34	0.42
1:C:22:ASN:HD22	1:C:23:PRO:N	2.16	0.42
1:A:88:VAL:HG21	1:A:166:VAL:HG11	2.02	0.42
1:C:174:ILE:HG23	2:C:1001:UUL:C12	2.50	0.42
1:E:67:GLU:OE2	1:E:71:ARG:NH1	2.48	0.42
1:C:17:VAL:O	1:C:49:PHE:HA	2.20	0.42
1:A:316:CYS:HA	1:A:317:PRO:HD3	1.92	0.42
1:F:77:VAL:HG13	1:F:83:LEU:HB3	2.01	0.42
1:B:132:GLU:H	1:B:132:GLU:HG2	1.54	0.42
1:B:54:THR:CG2	1:B:54:THR:O	2.68	0.42
1:B:337:VAL:HG13	4:B:1111:HOH:O	2.20	0.42
1:D:88:VAL:HG21	1:D:166:VAL:HG11	2.01	0.42
1:B:278:GLY:HA3	4:B:1146:HOH:O	2.18	0.42
1:E:13:ARG:NH1	1:E:46:GLU:OE2	2.53	0.42
1:B:52:MET:HE2	1:C:52:MET:CE	2.40	0.41
1:E:150:MET:HG3	1:E:361:MET:CE	2.50	0.41
1:C:294:VAL:HG22	1:C:318:TYR:CB	2.50	0.41
1:A:212:TYR:HA	1:A:327:PHE:HA	2.01	0.41
1:D:294:VAL:HG13	1:D:318:TYR:CG	2.55	0.41
1:E:158:ALA:C	1:E:160:GLY:H	2.24	0.41
1:F:6:MET:HG3	1:F:102:GLN:HE21	1.85	0.41
1:E:144:ARG:O	1:E:145:ARG:HB2	2.20	0.41
1:C:97:TRP:HA	1:C:100:ALA:HB3	2.02	0.41
1:C:280:CYS:SG	1:C:286:HIS:CE1	3.13	0.41
1:F:69:LEU:HB3	1:F:103:LYS:HE3	2.02	0.41
1:B:294:VAL:HG22	1:B:318:TYR:CB	2.51	0.41
1:B:258:VAL:HG21	1:B:299:LEU:HD11	2.03	0.41
1:D:144:ARG:O	1:D:145:ARG:HB2	2.20	0.41
1:B:262:ALA:HB1	1:B:285:MET:HE1	1.93	0.41
1:A:18:LEU:CD1	1:A:52:MET:HE1	2.50	0.41
1:E:212:TYR:HA	1:E:327:PHE:HA	2.03	0.41
1:F:170:ALA:HB3	1:F:339:ALA:HB3	2.02	0.41
1:E:181:SER:CB	1:E:191:ARG:HH11	2.33	0.41
1:A:150:MET:CE	1:A:279:ARG:HH21	2.33	0.41
1:B:362:VAL:HG22	4:B:1105:HOH:O	2.20	0.41

*Continued on next page...*

*Continued from previous page...*

Atom-1	Atom-2	Interatomic distance (Å)	Clash overlap (Å)
1:F:150:MET:HE1	1:F:265:HIS:CE1	2.53	0.41
1:B:169:LEU:HD22	1:B:327:PHE:CZ	2.56	0.41
1:B:276:PRO:CG	1:B:312:MET:HG3	2.51	0.41
1:F:289:TYR:CE1	1:F:291:ARG:HG2	2.56	0.41
1:B:106:CYS:HB2	1:B:362:VAL:HG13	2.03	0.41
1:B:203:LEU:HD12	1:B:296:ARG:HG3	2.02	0.41
1:D:50:THR:HG23	1:D:72:TRP:HH2	1.84	0.41
1:B:68:GLU:HG3	1:B:71:ARG:HG3	2.01	0.41
1:F:174:ILE:CD1	1:F:259:LEU:HD22	2.51	0.41
1:E:325:VAL:O	1:E:354:VAL:HG23	2.21	0.41
1:E:79:SER:OG	1:E:80:GLY:N	2.49	0.41
1:C:180:GLU:O	1:C:180:GLU:HG3	2.20	0.41
1:E:258:VAL:HG13	1:E:290:VAL:HG12	2.04	0.40
1:E:276:PRO:HG3	1:E:312:MET:HG3	2.04	0.40
1:D:328:ARG:NH2	1:D:351:GLN:HE22	2.14	0.40
1:B:63:LEU:HD21	1:C:50:THR:HG21	2.03	0.40
1:F:206:TYR:HD1	1:F:257:PHE:O	2.05	0.40
1:C:15:CYS:SG	1:C:47:ILE:HG12	2.62	0.40
1:D:50:THR:CG2	1:D:72:TRP:HH2	2.35	0.40
1:E:151:ASN:OD1	1:E:356:PRO:HA	2.21	0.40
1:A:169:LEU:HD12	1:A:340:VAL:HG22	2.03	0.40
1:C:61:ARG:NH2	1:C:93:GLU:OE2	2.44	0.40
1:C:153:LEU:HB3	1:C:165:SER:HB3	2.03	0.40
1:A:199:ARG:HG2	1:A:199:ARG:HH11	1.84	0.40
1:D:103:LYS:O	1:D:105:LEU:HD13	2.20	0.40
1:F:13:ARG:HA	1:F:14:PRO:HA	1.88	0.40

There are no symmetry-related clashes.

## 5.3 Torsion angles ⓘ

### 5.3.1 Protein backbone ⓘ

In the following table, the Percentiles column shows the percent Ramachandran outliers of the chain as a percentile score with respect to all X-ray entries followed by that with respect to entries of similar resolution.

The Analysed column shows the number of residues for which the backbone conformation was analysed, and the total number of residues.



Mol	Chain	Analysed	Favoured	Allowed	Outliers	Percentiles	
1	A	341/361 (94%)	319 (94%)	19 (6%)	3 (1%)	21	24
1	B	334/361 (92%)	311 (93%)	18 (5%)	5 (2%)	13	12
1	C	336/361 (93%)	308 (92%)	18 (5%)	10 (3%)	5	3
1	D	342/361 (95%)	322 (94%)	15 (4%)	5 (2%)	13	12
1	E	336/361 (93%)	317 (94%)	14 (4%)	5 (2%)	13	12
1	F	338/361 (94%)	308 (91%)	24 (7%)	6 (2%)	11	9
All	All	2027/2166 (94%)	1885 (93%)	108 (5%)	34 (2%)	11	10

All (34) Ramachandran outliers are listed below:

Mol	Chain	Res	Type
1	B	315	GLU
1	C	182	GLU
1	C	183	LYS
1	C	277	MET
1	D	79	SER
1	D	222	THR
1	F	333	ASP
1	A	79	SER
1	A	111	GLY
1	B	79	SER
1	B	333	ASP
1	C	7	GLY
1	C	79	SER
1	C	184	TYR
1	D	111	GLY
1	E	27	LYS
1	E	218	VAL
1	F	79	SER
1	C	27	LYS
1	C	240	PRO
1	D	332	LYS
1	E	79	SER
1	E	184	TYR
1	F	8	SER
1	F	183	LYS
1	D	221	LYS
1	E	182	GLU
1	F	179	LEU
1	F	331	PRO
1	C	10	VAL

*Continued on next page...*

*Continued from previous page...*

Mol	Chain	Res	Type
1	B	217	ARG
1	B	334	GLY
1	C	111	GLY
1	A	215	VAL

### 5.3.2 Protein sidechains ⓘ

In the following table, the Percentiles column shows the percent sidechain outliers of the chain as a percentile score with respect to all X-ray entries followed by that with respect to entries of similar resolution.

The Analysed column shows the number of residues for which the sidechain conformation was analysed, and the total number of residues.

Mol	Chain	Analysed	Rotameric	Outliers	Percentiles	
1	A	286/299 (96%)	250 (87%)	36 (13%)	5	5
1	B	283/299 (95%)	244 (86%)	39 (14%)	4	4
1	C	284/299 (95%)	240 (84%)	44 (16%)	3	3
1	D	287/299 (96%)	257 (90%)	30 (10%)	8	9
1	E	284/299 (95%)	251 (88%)	33 (12%)	7	7
1	F	284/299 (95%)	253 (89%)	31 (11%)	8	9
All	All	1708/1794 (95%)	1495 (88%)	213 (12%)	6	6

All (213) residues with a non-rotameric sidechain are listed below:

Mol	Chain	Res	Type
1	A	17	VAL
1	A	22	ASN
1	A	27	LYS
1	A	35	ARG
1	A	44	GLU
1	A	50	THR
1	A	56	ARG
1	A	71	ARG
1	A	83	LEU
1	A	102	GLN
1	A	105	LEU
1	A	130	THR
1	A	132	GLU
1	A	147	LEU

*Continued on next page...*

*Continued from previous page...*

Mol	Chain	Res	Type
1	A	150	MET
1	A	152	LEU
1	A	153	LEU
1	A	162	ARG
1	A	169	LEU
1	A	179	LEU
1	A	182	GLU
1	A	184	TYR
1	A	198	LEU
1	A	199	ARG
1	A	200	LEU
1	A	203	LEU
1	A	210	LEU
1	A	217	ARG
1	A	218	VAL
1	A	221	LYS
1	A	254	ASP
1	A	258	VAL
1	A	294	VAL
1	A	299	LEU
1	A	358	TYR
1	A	362	VAL
1	B	17	VAL
1	B	22	ASN
1	B	27	LYS
1	B	35	ARG
1	B	41	LEU
1	B	50	THR
1	B	57	ARG
1	B	83	LEU
1	B	101	ILE
1	B	105	LEU
1	B	132	GLU
1	B	147	LEU
1	B	152	LEU
1	B	153	LEU
1	B	159	SER
1	B	162	ARG
1	B	169	LEU
1	B	179	LEU
1	B	182	GLU
1	B	183	LYS

*Continued on next page...*

*Continued from previous page...*

Mol	Chain	Res	Type
1	B	193	THR
1	B	198	LEU
1	B	199	ARG
1	B	200	LEU
1	B	203	LEU
1	B	204	ARG
1	B	210	LEU
1	B	234	VAL
1	B	248	HIS
1	B	256	ASP
1	B	258	VAL
1	B	273	PHE
1	B	294	VAL
1	B	299	LEU
1	B	315	GLU
1	B	330	GLU
1	B	343	GLU
1	B	361	MET
1	B	362	VAL
1	C	6	MET
1	C	17	VAL
1	C	22	ASN
1	C	24	ARG
1	C	35	ARG
1	C	44	GLU
1	C	54	THR
1	C	56	ARG
1	C	71	ARG
1	C	83	LEU
1	C	99	THR
1	C	102	GLN
1	C	105	LEU
1	C	132	GLU
1	C	147	LEU
1	C	152	LEU
1	C	153	LEU
1	C	179	LEU
1	C	180	GLU
1	C	181	SER
1	C	182	GLU
1	C	184	TYR
1	C	196	THR

*Continued on next page...*

*Continued from previous page...*

Mol	Chain	Res	Type
1	C	200	LEU
1	C	203	LEU
1	C	206	TYR
1	C	210	LEU
1	C	231	GLN
1	C	247	SER
1	C	254	ASP
1	C	255	GLU
1	C	256	ASP
1	C	258	VAL
1	C	277	MET
1	C	285	MET
1	C	294	VAL
1	C	296	ARG
1	C	308	LYS
1	C	316	CYS
1	C	330	GLU
1	C	337	VAL
1	C	345	MET
1	C	362	VAL
1	C	363	SER
1	D	10	VAL
1	D	16	ARG
1	D	17	VAL
1	D	22	ASN
1	D	27	LYS
1	D	41	LEU
1	D	50	THR
1	D	63	LEU
1	D	71	ARG
1	D	83	LEU
1	D	99	THR
1	D	105	LEU
1	D	132	GLU
1	D	147	LEU
1	D	152	LEU
1	D	153	LEU
1	D	162	ARG
1	D	182	GLU
1	D	184	TYR
1	D	198	LEU
1	D	199	ARG

*Continued on next page...*

*Continued from previous page...*

Mol	Chain	Res	Type
1	D	210	LEU
1	D	221	LYS
1	D	234	VAL
1	D	254	ASP
1	D	294	VAL
1	D	299	LEU
1	D	347	SER
1	D	358	TYR
1	D	362	VAL
1	E	16	ARG
1	E	22	ASN
1	E	27	LYS
1	E	35	ARG
1	E	50	THR
1	E	71	ARG
1	E	83	LEU
1	E	105	LEU
1	E	112	SER
1	E	132	GLU
1	E	147	LEU
1	E	150	MET
1	E	152	LEU
1	E	153	LEU
1	E	162	ARG
1	E	179	LEU
1	E	180	GLU
1	E	182	GLU
1	E	190	MET
1	E	199	ARG
1	E	203	LEU
1	E	210	LEU
1	E	256	ASP
1	E	258	VAL
1	E	271	GLU
1	E	273	PHE
1	E	296	ARG
1	E	299	LEU
1	E	322	VAL
1	E	332	LYS
1	E	337	VAL
1	E	346	VAL
1	E	362	VAL

*Continued on next page...*

*Continued from previous page...*

Mol	Chain	Res	Type
1	F	8	SER
1	F	22	ASN
1	F	35	ARG
1	F	41	LEU
1	F	50	THR
1	F	56	ARG
1	F	76	VAL
1	F	83	LEU
1	F	102	GLN
1	F	105	LEU
1	F	132	GLU
1	F	147	LEU
1	F	153	LEU
1	F	159	SER
1	F	162	ARG
1	F	163	LEU
1	F	182	GLU
1	F	183	LYS
1	F	198	LEU
1	F	200	LEU
1	F	206	TYR
1	F	209	ARG
1	F	210	LEU
1	F	231	GLN
1	F	234	VAL
1	F	254	ASP
1	F	258	VAL
1	F	299	LEU
1	F	344	LEU
1	F	354	VAL
1	F	362	VAL

Some sidechains can be flipped to improve hydrogen bonding and reduce clashes. All (55) such sidechains are listed below:

Mol	Chain	Res	Type
1	A	22	ASN
1	A	85	HIS
1	A	89	ASN
1	A	121	ASN
1	A	122	HIS
1	A	128	GLN
1	A	231	GLN

*Continued on next page...*

*Continued from previous page...*

Mol	Chain	Res	Type
1	A	237	HIS
1	A	286	HIS
1	A	351	GLN
1	B	22	ASN
1	B	32	GLN
1	B	85	HIS
1	B	89	ASN
1	B	121	ASN
1	B	122	HIS
1	B	128	GLN
1	B	265	HIS
1	B	286	HIS
1	B	351	GLN
1	C	22	ASN
1	C	85	HIS
1	C	89	ASN
1	C	121	ASN
1	C	122	HIS
1	C	128	GLN
1	C	231	GLN
1	C	286	HIS
1	C	351	GLN
1	D	22	ASN
1	D	85	HIS
1	D	89	ASN
1	D	121	ASN
1	D	128	GLN
1	D	231	GLN
1	D	237	HIS
1	D	286	HIS
1	D	351	GLN
1	E	22	ASN
1	E	85	HIS
1	E	89	ASN
1	E	121	ASN
1	E	122	HIS
1	E	128	GLN
1	E	286	HIS
1	E	351	GLN
1	F	22	ASN
1	F	85	HIS
1	F	89	ASN

*Continued on next page...*



*Continued from previous page...*

Mol	Chain	Res	Type
1	F	102	GLN
1	F	121	ASN
1	F	231	GLN
1	F	265	HIS
1	F	286	HIS
1	F	351	GLN

### 5.3.3 RNA ⓘ

There are no RNA molecules in this entry.

## 5.4 Non-standard residues in protein, DNA, RNA chains ⓘ

There are no non-standard protein/DNA/RNA residues in this entry.

## 5.5 Carbohydrates ⓘ

There are no carbohydrates in this entry.

## 5.6 Ligand geometry ⓘ

8 ligands are modelled in this entry.

In the following table, the Counts columns list the number of bonds (or angles) for which Mogul statistics could be retrieved, the number of bonds (or angles) that are observed in the model and the number of bonds (or angles) that are defined in the chemical component dictionary. The Link column lists molecule types, if any, to which the group is linked. The Z score for a bond length (or angle) is the number of standard deviations the observed value is removed from the expected value. A bond length (or angle) with  $|Z| > 2$  is considered an outlier worth inspection. RMSZ is the root-mean-square of all Z scores of the bond lengths (or angles).

Mol	Type	Chain	Res	Link	Bond lengths			Bond angles		
					Counts	RMSZ	$\# Z  > 2$	Counts	RMSZ	$\# Z  > 2$
2	UUL	A	1001	-	19,22,22	1.51	2 (10%)	24,30,30	1.27	2 (8%)
2	UUL	B	1001	-	19,22,22	1.59	2 (10%)	24,30,30	1.31	3 (12%)
2	UUL	C	1001	-	19,22,22	1.60	2 (10%)	24,30,30	1.27	2 (8%)
2	UUL	D	1001	-	19,22,22	1.54	2 (10%)	24,30,30	1.19	2 (8%)
3	EDO	D	1002	-	3,3,3	0.49	0	2,2,2	0.28	0
2	UUL	E	1001	-	19,22,22	1.59	2 (10%)	24,30,30	1.14	2 (8%)

Mol	Type	Chain	Res	Link	Bond lengths			Bond angles		
					Counts	RMSZ	# Z  > 2	Counts	RMSZ	# Z  > 2
2	UUL	F	1001	-	19,22,22	1.59	2 (10%)	24,30,30	1.07	2 (8%)
3	EDO	F	1002	-	3,3,3	0.36	0	2,2,2	0.89	0

In the following table, the Chirals column lists the number of chiral outliers, the number of chiral centers analysed, the number of these observed in the model and the number defined in the chemical component dictionary. Similar counts are reported in the Torsion and Rings columns. '-' means no outliers of that kind were identified.

Mol	Type	Chain	Res	Link	Chirals	Torsions	Rings
2	UUL	A	1001	-	-	0/6/8/8	0/3/3/3
2	UUL	B	1001	-	-	0/6/8/8	0/3/3/3
2	UUL	C	1001	-	-	0/6/8/8	0/3/3/3
2	UUL	D	1001	-	-	0/6/8/8	0/3/3/3
3	EDO	D	1002	-	-	0/1/1/1	0/0/0/0
2	UUL	E	1001	-	-	0/6/8/8	0/3/3/3
2	UUL	F	1001	-	-	0/6/8/8	0/3/3/3
3	EDO	F	1002	-	-	0/1/1/1	0/0/0/0

All (12) bond length outliers are listed below:

Mol	Chain	Res	Type	Atoms	Z	Observed(Å)	Ideal(Å)
2	C	1001	UUL	C7-C3	-5.74	1.40	1.48
2	B	1001	UUL	C7-C3	-5.65	1.40	1.48
2	E	1001	UUL	C7-C3	-5.60	1.40	1.48
2	A	1001	UUL	C7-C3	-5.60	1.40	1.48
2	D	1001	UUL	C7-C3	-5.45	1.40	1.48
2	F	1001	UUL	C7-C3	-5.43	1.40	1.48
2	B	1001	UUL	C10-N6	-3.03	1.34	1.40
2	D	1001	UUL	C10-N6	-2.87	1.34	1.40
2	F	1001	UUL	C10-N6	-2.77	1.34	1.40
2	C	1001	UUL	C10-N6	-2.74	1.34	1.40
2	E	1001	UUL	C10-N6	-2.71	1.35	1.40
2	A	1001	UUL	C10-N6	-2.33	1.35	1.40

All (13) bond angle outliers are listed below:

Mol	Chain	Res	Type	Atoms	Z	Observed(°)	Ideal(°)
2	D	1001	UUL	C5-C3-C7	-4.05	123.76	129.40
2	C	1001	UUL	C5-C3-C7	-3.87	124.01	129.40
2	B	1001	UUL	C5-C3-C7	-3.78	124.14	129.40
2	A	1001	UUL	C5-C3-C7	-3.72	124.22	129.40
2	C	1001	UUL	C3-C5-S4	-3.37	107.65	111.79

*Continued on next page...*

*Continued from previous page...*

Mol	Chain	Res	Type	Atoms	Z	Observed(°)	Ideal(°)
2	E	1001	UUL	C3-C5-S4	-3.29	107.75	111.79
2	A	1001	UUL	C3-C5-S4	-3.26	107.79	111.79
2	F	1001	UUL	C5-C3-C7	-3.16	125.01	129.40
2	B	1001	UUL	C3-C5-S4	-3.15	107.92	111.79
2	E	1001	UUL	C5-C3-C7	-3.11	125.07	129.40
2	D	1001	UUL	C3-C5-S4	-2.92	108.20	111.79
2	F	1001	UUL	C3-C5-S4	-2.91	108.22	111.79
2	B	1001	UUL	C8-C7-C3	-2.00	117.98	121.24

There are no chirality outliers.

There are no torsion outliers.

There are no ring outliers.

3 monomers are involved in 4 short contacts:

Mol	Chain	Res	Type	Clashes	Symm-Clashes
2	B	1001	UUL	1	0
2	C	1001	UUL	1	0
3	F	1002	EDO	2	0

## 5.7 Other polymers [i](#)

There are no such residues in this entry.

## 5.8 Polymer linkage issues [i](#)

There are no chain breaks in this entry.

## 6 Fit of model and data ⓘ

### 6.1 Protein, DNA and RNA chains ⓘ

In the following table, the column labelled ‘#RSRZ> 2’ contains the number (and percentage) of RSRZ outliers, followed by percent RSRZ outliers for the chain as percentile scores relative to all X-ray entries and entries of similar resolution. The OWAB column contains the minimum, median, 95<sup>th</sup> percentile and maximum values of the occupancy-weighted average B-factor per residue. The column labelled ‘Q< 0.9’ lists the number of (and percentage) of residues with an average occupancy less than 0.9.

Mol	Chain	Analysed	<RSRZ>	#RSRZ>2	OWAB(Å <sup>2</sup> )	Q<0.9
1	A	347/361 (96%)	-0.04	6 (1%) 73 79	22, 34, 63, 87	1 (0%)
1	B	340/361 (94%)	0.48	17 (5%) 32 41	22, 39, 75, 116	1 (0%)
1	C	342/361 (94%)	0.26	18 (5%) 30 39	24, 41, 71, 97	1 (0%)
1	D	348/361 (96%)	0.06	6 (1%) 73 79	24, 37, 66, 104	1 (0%)
1	E	342/361 (94%)	0.48	21 (6%) 25 33	25, 41, 73, 110	1 (0%)
1	F	344/361 (95%)	0.69	42 (12%) 5 9	27, 49, 80, 114	1 (0%)
All	All	2063/2166 (95%)	0.32	110 (5%) 30 39	22, 40, 74, 116	6 (0%)

All (110) RSRZ outliers are listed below:

Mol	Chain	Res	Type	RSRZ
1	C	333	ASP	5.6
1	B	218	VAL	5.2
1	F	332	LYS	5.2
1	E	184	TYR	4.8
1	D	184	TYR	4.7
1	B	184	TYR	4.7
1	F	200	LEU	4.7
1	E	332	LYS	4.4
1	F	110	ALA	4.1
1	C	332	LYS	4.1
1	F	333	ASP	4.1
1	C	334	GLY	3.9
1	F	344	LEU	3.9
1	D	112	SER	3.9
1	F	335	LYS	3.9
1	F	348	GLU	3.8
1	F	219	GLY	3.8
1	C	27	LYS	3.7
1	F	26	GLY	3.7

*Continued on next page...*

*Continued from previous page...*

Mol	Chain	Res	Type	RSRZ
1	E	190	MET	3.7
1	C	247	SER	3.7
1	B	332	LYS	3.6
1	B	344	LEU	3.6
1	E	333	ASP	3.6
1	C	348	GLU	3.5
1	F	291	ARG	3.5
1	F	210	LEU	3.5
1	F	337	VAL	3.5
1	A	184	TYR	3.4
1	C	57	ARG	3.4
1	F	245	VAL	3.4
1	E	179	LEU	3.3
1	C	184	TYR	3.3
1	E	242	GLU	3.3
1	F	258	VAL	3.3
1	F	290	VAL	3.3
1	B	245	VAL	3.3
1	D	57	ARG	3.2
1	F	334	GLY	3.1
1	C	315	GLU	3.1
1	A	217	ARG	3.1
1	E	185	ARG	3.1
1	B	350	VAL	3.0
1	F	184	TYR	3.0
1	F	314	TYR	3.0
1	F	170	ALA	3.0
1	D	315	GLU	3.0
1	F	32	GLN	2.9
1	E	207	ARG	2.9
1	F	254	ASP	2.9
1	E	158	ALA	2.8
1	F	251	VAL	2.8
1	F	218	VAL	2.8
1	A	216	GLY	2.8
1	B	335	LYS	2.8
1	B	242	GLU	2.7
1	E	348	GLU	2.7
1	F	259	LEU	2.7
1	F	296	ARG	2.6
1	F	157	THR	2.6
1	D	298	MET	2.6

*Continued on next page...*

*Continued from previous page...*

Mol	Chain	Res	Type	RSRZ
1	B	348	GLU	2.6
1	E	231	GLN	2.6
1	E	251	VAL	2.5
1	F	350	VAL	2.5
1	C	343	GLU	2.5
1	B	334	GLY	2.5
1	E	344	LEU	2.5
1	B	111	GLY	2.5
1	F	212	TYR	2.4
1	B	297	ALA	2.4
1	C	209	ARG	2.4
1	F	246	PRO	2.4
1	B	345	MET	2.4
1	F	208	GLY	2.4
1	E	253	PRO	2.4
1	B	333	ASP	2.4
1	C	234	VAL	2.4
1	F	6	MET	2.3
1	E	335	LYS	2.3
1	F	207	ARG	2.3
1	C	202	ALA	2.3
1	F	205	THR	2.3
1	F	292	ALA	2.3
1	A	222	THR	2.3
1	C	206	TYR	2.3
1	E	209	ARG	2.3
1	C	292	ALA	2.2
1	E	280	CYS	2.2
1	A	218	VAL	2.2
1	F	239	VAL	2.2
1	D	197	PHE	2.2
1	E	26	GLY	2.2
1	E	24	ARG	2.2
1	E	238	LEU	2.2
1	C	207	ARG	2.1
1	A	333	ASP	2.1
1	E	171	TRP	2.1
1	F	270	SER	2.1
1	B	161	LEU	2.1
1	F	315	GLU	2.1
1	F	206	TYR	2.1
1	C	231	GLN	2.1

*Continued on next page...*

*Continued from previous page...*

Mol	Chain	Res	Type	RSRZ
1	F	111	GLY	2.1
1	F	318	TYR	2.0
1	F	7	GLY	2.0
1	B	200	LEU	2.0
1	F	312	MET	2.0
1	C	242	GLU	2.0
1	B	190	MET	2.0

## 6.2 Non-standard residues in protein, DNA, RNA chains [i](#)

There are no non-standard protein/DNA/RNA residues in this entry.

## 6.3 Carbohydrates [i](#)

There are no carbohydrates in this entry.

## 6.4 Ligands [i](#)

In the following table, the Atoms column lists the number of modelled atoms in the group and the number defined in the chemical component dictionary. LLDF column lists the quality of electron density of the group with respect to its neighbouring residues in protein, DNA or RNA chains. The B-factors column lists the minimum, median, 95<sup>th</sup> percentile and maximum values of B factors of atoms in the group. The column labelled 'Q< 0.9' lists the number of atoms with occupancy less than 0.9.

Mol	Type	Chain	Res	Atoms	RSCC	RSR	LLDF	B-factors(Å <sup>2</sup> )	Q<0.9
2	UUL	C	1001	20/20	0.86	0.28	4.49	51,66,73,75	0
3	EDO	F	1002	4/4	0.90	0.19	1.97	35,38,42,44	0
3	EDO	D	1002	4/4	0.91	0.16	1.34	36,39,43,47	0
2	UUL	F	1001	20/20	0.85	0.21	1.03	43,62,77,77	0
2	UUL	D	1001	20/20	0.96	0.14	-0.02	35,41,45,46	0
2	UUL	B	1001	20/20	0.92	0.17	-0.17	52,57,63,64	0
2	UUL	A	1001	20/20	0.97	0.11	-0.42	28,31,38,40	0
2	UUL	E	1001	20/20	0.96	0.12	-1.97	41,46,51,52	0

## 6.5 Other polymers [i](#)

There are no such residues in this entry.