



# Full wwPDB X-ray Structure Validation Report ⓘ

Feb 1, 2016 – 02:05 PM GMT

PDB ID : 3W2T  
Title : Crystal structure of human deipeptidyl peptidase IV (DPP-4) in complex with vildagliptin  
Authors : Kishida, H.; Nabeno, M.; Miyaguchi, I.; Tanaka, Y.; Katou, R.; Akahoshi, F.  
Deposited on : 2012-12-04  
Resolution : 2.36 Å(reported)

This is a Full wwPDB X-ray Structure Validation Report for a publicly released PDB entry.  
We welcome your comments at [validation@mail.wwpdb.org](mailto:validation@mail.wwpdb.org)  
A user guide is available at  
<http://wwpdb.org/validation/2016/XrayValidationReportHelp>  
with specific help available everywhere you see the ⓘ symbol.

---

The following versions of software and data (see [references ⓘ](#)) were used in the production of this report:

MolProbity : 4.02b-467  
Mogul : 1.7 (RC4), CSD as536be (2015)  
Xtriage (Phenix) : 1.9-1692  
EDS : rb-20026688  
Percentile statistics : 20151230.v01 (using entries in the PDB archive December 30th 2015)  
Refmac : 5.8.0135  
CCP4 : 6.5.0  
Ideal geometry (proteins) : Engh & Huber (2001)  
Ideal geometry (DNA, RNA) : Parkinson et al. (1996)  
Validation Pipeline (wwPDB-VP) : trunk26865

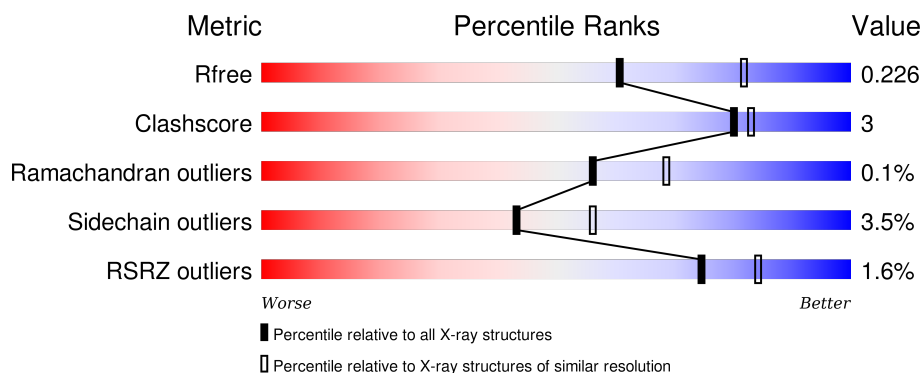
# 1 Overall quality at a glance ⓘ

The following experimental techniques were used to determine the structure:

## *X-RAY DIFFRACTION*

The reported resolution of this entry is 2.36 Å.

Percentile scores (ranging between 0-100) for global validation metrics of the entry are shown in the following graphic. The table shows the number of entries on which the scores are based.



Metric	Whole archive (#Entries)	Similar resolution (#Entries, resolution range(Å))
$R_{free}$	91344	1352 (2.38-2.34)
Clashscore	102246	1456 (2.38-2.34)
Ramachandran outliers	100387	1435 (2.38-2.34)
Sidechain outliers	100360	1436 (2.38-2.34)
RSRZ outliers	91569	1358 (2.38-2.34)

The table below summarises the geometric issues observed across the polymeric chains and their fit to the electron density. The red, orange, yellow and green segments on the lower bar indicate the fraction of residues that contain outliers for  $\geq 3$ , 2, 1 and 0 types of geometric quality criteria. A grey segment represents the fraction of residues that are not modelled. The numeric value for each fraction is indicated below the corresponding segment, with a dot representing fractions  $\leq 5\%$ . The upper red bar (where present) indicates the fraction of residues that have poor fit to the electron density. The numeric value is given above the bar.

Mol	Chain	Length	Quality of chain
1	A	740	<div> <div>2%</div> <div>89%</div> <div>9%</div> <div>..</div> </div>
1	B	740	<div> <div>%</div> <div>87%</div> <div>10%</div> <div>..</div> </div>

The following table lists non-polymeric compounds, carbohydrate monomers and non-standard residues in protein, DNA, RNA chains that are outliers for geometric or electron-density-fit criteria:

Mol	Type	Chain	Res	Chirality	Geometry	Clashes	Electron density
3	GOL	A	802	-	-	-	X
3	GOL	B	802	-	-	-	X
6	NAG	A	812	-	-	-	X
6	NAG	B	811	-	-	-	X

## 2 Entry composition

There are 7 unique types of molecules in this entry. The entry contains 13311 atoms, of which 0 are hydrogens and 0 are deuteriums.

In the tables below, the ZeroOcc column contains the number of atoms modelled with zero occupancy, the AltConf column contains the number of residues with at least one atom in alternate conformation and the Trace column contains the number of residues modelled with at most 2 atoms.

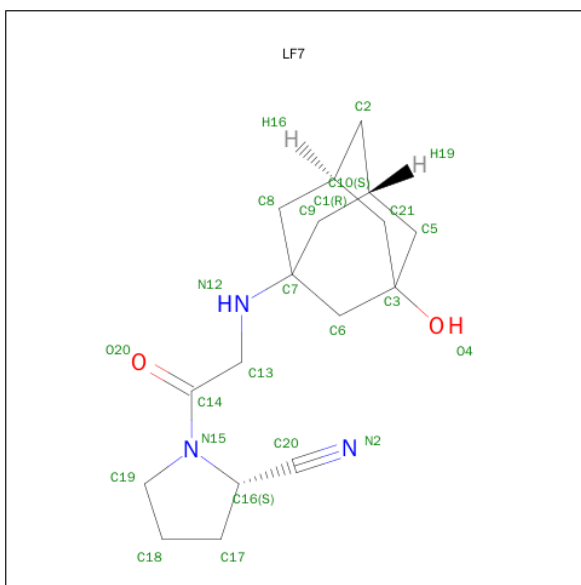
- Molecule 1 is a protein called Dipeptidyl peptidase 4.

Mol	Chain	Residues	Atoms					ZeroOcc	AltConf	Trace
1	A	729	Total	C	N	O	S	0	0	0
			5971	3831	983	1131	26			
1	B	729	Total	C	N	O	S	0	0	0
			5971	3831	983	1131	26			

There are 12 discrepancies between the modelled and reference sequences:

Chain	Residue	Modelled	Actual	Comment	Reference
A	767	HIS	-	EXPRESSION TAG	UNP P27487
A	768	HIS	-	EXPRESSION TAG	UNP P27487
A	769	HIS	-	EXPRESSION TAG	UNP P27487
A	770	HIS	-	EXPRESSION TAG	UNP P27487
A	771	HIS	-	EXPRESSION TAG	UNP P27487
A	772	HIS	-	EXPRESSION TAG	UNP P27487
B	767	HIS	-	EXPRESSION TAG	UNP P27487
B	768	HIS	-	EXPRESSION TAG	UNP P27487
B	769	HIS	-	EXPRESSION TAG	UNP P27487
B	770	HIS	-	EXPRESSION TAG	UNP P27487
B	771	HIS	-	EXPRESSION TAG	UNP P27487
B	772	HIS	-	EXPRESSION TAG	UNP P27487

- Molecule 2 is (2S)-1-{N-[(1R,3S,5R,7S)-3-HYDROXYTRICYCLO[3.3.1.1.1 3,7 ]DEC-1-YL]GLYCYL}PYRROLIDINE-2-CARBONITRILE (three-letter code: LF7) (formula: C<sub>17</sub>H<sub>25</sub>N<sub>3</sub>O<sub>2</sub>).



Mol	Chain	Residues	Atoms				ZeroOcc	AltConf
2	A	1	Total	C	N	O	0	0
			22	17	3	2		
2	B	1	Total	C	N	O	0	0
			22	17	3	2		

- Molecule 3 is GLYCEROL (three-letter code: GOL) (formula:  $C_3H_8O_3$ ).

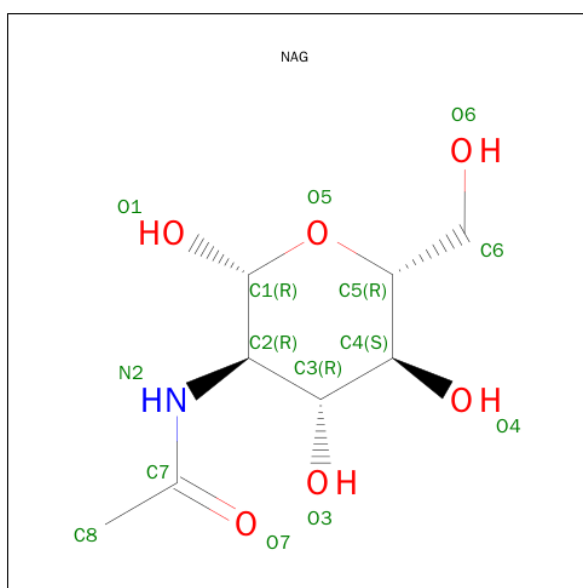


Mol	Chain	Residues	Atoms			ZeroOcc	AltConf
3	A	1	Total	C	O	0	0
			6	3	3		
3	B	1	Total	C	O	0	0
			6	3	3		

- Molecule 4 is a polymer of unknown type called SUGAR (2-MER).

Mol	Chain	Residues	Atoms				ZeroOcc	AltConf
4	A	2	Total	C	N	O	0	0
			24	14	1	9		
4	B	2	Total	C	N	O	0	0
			24	14	1	9		

- Molecule 5 is SUGAR (N-ACETYL-D-GLUCOSAMINE) (three-letter code: NAG) (formula:  $C_8H_{15}NO_6$ ).



Mol	Chain	Residues	Atoms				ZeroOcc	AltConf
5	A	1	Total	C	N	O	0	0
			14	8	1	5		
5	A	1	Total	C	N	O	0	0
			14	8	1	5		
5	A	1	Total	C	N	O	0	0
			14	8	1	5		
5	B	1	Total	C	N	O	0	0
			14	8	1	5		
5	B	1	Total	C	N	O	0	0
			14	8	1	5		

- Molecule 6 is a polymer of unknown type called SUGAR (2-MER).

Mol	Chain	Residues	Atoms				ZeroOcc	AltConf
6	A	2	Total	C	N	O	0	0
			28	16	2	10		

*Continued on next page...*

*Continued from previous page...*

Mol	Chain	Residues	Atoms				ZeroOcc	AltConf
6	A	2	Total	C	N	O	0	0
			28	16	2	10		
6	A	2	Total	C	N	O	0	0
			28	16	2	10		
6	B	2	Total	C	N	O	0	0
			28	16	2	10		
6	B	2	Total	C	N	O	0	0
			28	16	2	10		
6	B	2	Total	C	N	O	0	0
			28	16	2	10		

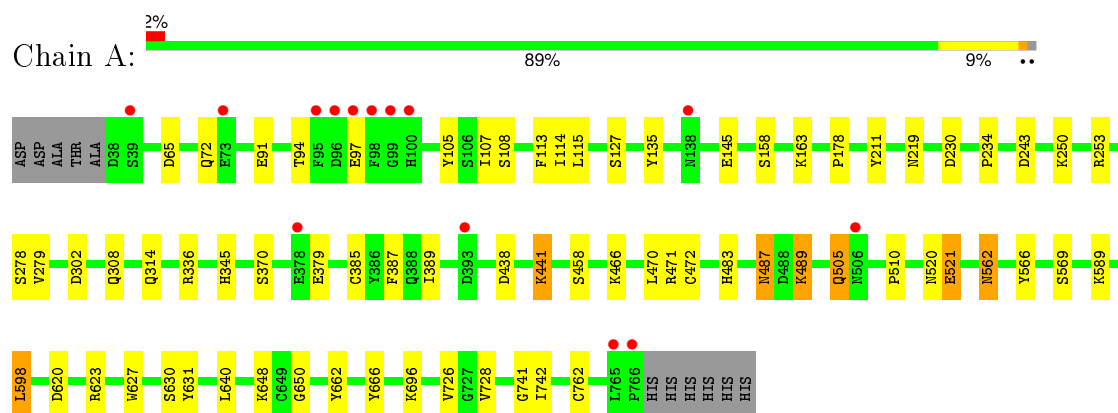
- Molecule 7 is water.

Mol	Chain	Residues	Atoms		ZeroOcc	AltConf
7	A	482	Total	O	0	0
			482	482		
7	B	545	Total	O	0	0
			545	545		

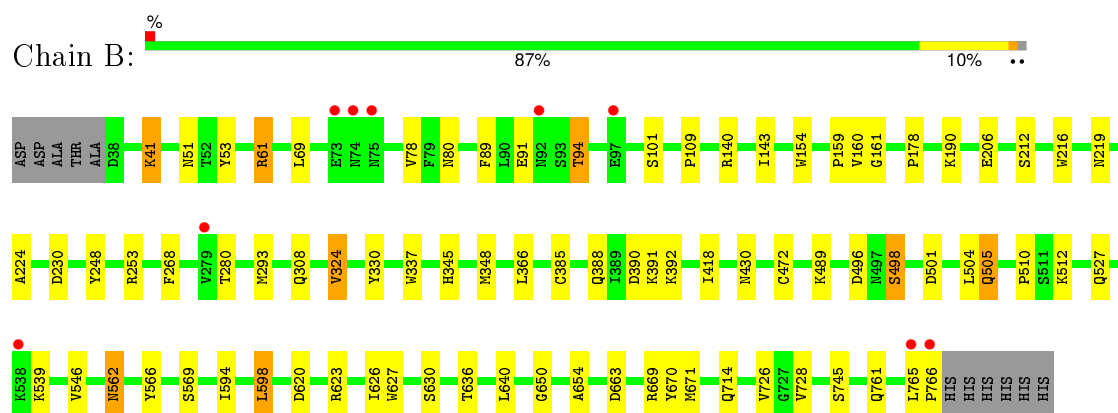
### 3 Residue-property plots

These plots are drawn for all protein, RNA and DNA chains in the entry. The first graphic for a chain summarises the proportions of errors displayed in the second graphic. The second graphic shows the sequence view annotated by issues in geometry and electron density. Residues are color-coded according to the number of geometric quality criteria for which they contain at least one outlier: green = 0, yellow = 1, orange = 2 and red = 3 or more. A red dot above a residue indicates a poor fit to the electron density ( $RSRZ > 2$ ). Stretches of 2 or more consecutive residues without any outlier are shown as a green connector. Residues present in the sample, but not in the model, are shown in grey.

#### • Molecule 1: Dipeptidyl peptidase 4



#### • Molecule 1: Dipeptidyl peptidase 4



## 4 Data and refinement statistics

Property	Value	Source
Space group	P 21 21 21	Depositor
Cell constants a, b, c, $\alpha$ , $\beta$ , $\gamma$	118.22Å 126.24Å 137.09Å 90.00° 90.00° 90.00°	Depositor
Resolution (Å)	30.00 – 2.36 49.86 – 2.36	Depositor EDS
% Data completeness (in resolution range)	97.3 (30.00-2.36) 97.3 (49.86-2.36)	Depositor EDS
$R_{merge}$	0.08	Depositor
$R_{sym}$	(Not available)	Depositor
$\langle I/\sigma(I) \rangle$ <sup>1</sup>	6.30 (at 2.37Å)	Xtriage
Refinement program	REFMAC 5.5.0110	Depositor
R, $R_{free}$	0.180 , 0.231 0.177 , 0.226	Depositor DCC
$R_{free}$ test set	4103 reflections (5.25%)	DCC
Wilson B-factor (Å <sup>2</sup> )	32.7	Xtriage
Anisotropy	0.469	Xtriage
Bulk solvent $k_{sol}$ (e/Å <sup>3</sup> ), $B_{sol}$ (Å <sup>2</sup> )	0.34 , 45.3	EDS
Estimated twinning fraction	No twinning to report.	Xtriage
L-test for twinning <sup>2</sup>	$\langle  L  \rangle = 0.50$ , $\langle L^2 \rangle = 0.34$	Xtriage
Outliers	0 of 82341 reflections	Xtriage
$F_o, F_c$ correlation	0.95	EDS
Total number of atoms	13311	wwPDB-VP
Average B, all atoms (Å <sup>2</sup> )	32.0	wwPDB-VP

Xtriage's analysis on translational NCS is as follows: *The largest off-origin peak in the Patterson function is 3.31% of the height of the origin peak. No significant pseudotranslation is detected.*

<sup>1</sup>Intensities estimated from amplitudes.

<sup>2</sup>Theoretical values of  $\langle |L| \rangle$ ,  $\langle L^2 \rangle$  for acentric reflections are 0.5, 0.375 respectively for untwinned datasets, and 0.333, 0.2 for perfectly twinned datasets.

## 5 Model quality [i](#)

### 5.1 Standard geometry [i](#)

Bond lengths and bond angles in the following residue types are not validated in this section: GOL, LF7, FUL, NAG

The Z score for a bond length (or angle) is the number of standard deviations the observed value is removed from the expected value. A bond length (or angle) with  $|Z| > 5$  is considered an outlier worth inspection. RMSZ is the root-mean-square of all Z scores of the bond lengths (or angles).

Mol	Chain	Bond lengths		Bond angles	
		RMSZ	$\# Z  > 5$	RMSZ	$\# Z  > 5$
1	A	0.57	1/6143 (0.0%)	0.63	0/8355
1	B	0.57	0/6143	0.65	0/8355
All	All	0.57	1/12286 (0.0%)	0.64	0/16710

All (1) bond length outliers are listed below:

Mol	Chain	Res	Type	Atoms	Z	Observed(Å)	Ideal(Å)
1	A	630	SER	CA-CB	-5.36	1.45	1.52

There are no bond angle outliers.

There are no chirality outliers.

There are no planarity outliers.

### 5.2 Too-close contacts [i](#)

In the following table, the Non-H and H(model) columns list the number of non-hydrogen atoms and hydrogen atoms in the chain respectively. The H(added) column lists the number of hydrogen atoms added and optimized by MolProbity. The Clashes column lists the number of clashes within the asymmetric unit, whereas Symm-Clashes lists symmetry related clashes.

Mol	Chain	Non-H	H(model)	H(added)	Clashes	Symm-Clashes
1	A	5971	0	5681	36	0
1	B	5971	0	5682	44	0
2	A	22	0	25	2	0
2	B	22	0	25	0	0
3	A	6	0	8	0	0
3	B	6	0	8	0	0
4	A	24	0	22	0	0
4	B	24	0	22	3	0

*Continued on next page...*

*Continued from previous page...*

Mol	Chain	Non-H	H(model)	H(added)	Clashes	Symm-Clashes
5	A	42	0	39	1	0
5	B	28	0	26	0	0
6	A	84	0	75	0	0
6	B	84	0	75	0	0
7	A	482	0	0	2	0
7	B	545	0	0	4	0
All	All	13311	0	11688	81	0

The all-atom clashscore is defined as the number of clashes found per 1000 atoms (including hydrogen atoms). The all-atom clashscore for this structure is 3.

All (81) close contacts within the same asymmetric unit are listed below, sorted by their clash magnitude.

Atom-1	Atom-2	Interatomic distance (Å)	Clash overlap (Å)
1:B:61:ARG:HG3	1:B:61:ARG:HH11	1.20	1.03
1:A:253:ARG:HH21	1:B:253:ARG:HH21	1.20	0.86
5:A:809:NAG:H81	7:A:2067:HOH:O	1.86	0.74
1:A:114:ILE:HG23	1:A:135:TYR:HB3	1.70	0.73
1:A:505:GLN:HA	1:A:505:GLN:HE21	1.53	0.73
1:B:61:ARG:CG	1:B:61:ARG:HH11	1.99	0.72
1:B:80:ASN:HB2	4:B:803:NAG:H82	1.72	0.71
1:B:726:VAL:HG23	1:B:728:VAL:HG23	1.73	0.71
1:B:539:LYS:HE3	1:B:620:ASP:HA	1.74	0.67
1:B:41:LYS:HE3	1:B:53:TYR:OH	1.97	0.64
1:A:91:GLU:O	1:A:94:THR:HG23	2.00	0.61
1:A:640:LEU:HD11	1:A:650:GLY:HA3	1.83	0.60
1:B:345:HIS:HD2	7:B:1025:HOH:O	1.84	0.60
1:B:61:ARG:HG3	1:B:61:ARG:NH1	1.99	0.60
1:B:293:MET:HE3	1:B:324:VAL:HG12	1.83	0.60
1:A:219:ASN:H	1:A:308:GLN:HE22	1.50	0.60
1:A:620:ASP:OD2	1:A:623:ARG:HD3	2.03	0.59
1:B:293:MET:CE	1:B:324:VAL:HG12	2.35	0.56
1:B:219:ASN:H	1:B:308:GLN:HE22	1.53	0.55
1:A:696:LYS:HG3	1:A:728:VAL:HG22	1.89	0.55
1:B:143:ILE:CD1	1:B:178:PRO:HB2	2.36	0.55
1:B:91:GLU:O	1:B:94:THR:HG22	2.07	0.54
1:B:78:VAL:HG23	1:B:89:PHE:HB2	1.90	0.53
1:A:520:ASN:C	1:A:521:GLU:HG2	2.28	0.53
1:A:105:TYR:HB2	1:A:114:ILE:HD11	1.89	0.53
1:B:69:LEU:HD23	1:B:78:VAL:HG22	1.90	0.53
1:B:598:LEU:HD22	1:B:671:MET:HG2	1.92	0.51

*Continued on next page...*

*Continued from previous page...*

Atom-1	Atom-2	Interatomic distance (Å)	Clash overlap (Å)
1:A:345:HIS:HE1	1:A:389:ILE:O	1.94	0.51
1:B:219:ASN:N	1:B:308:GLN:HE22	2.09	0.50
1:B:505:GLN:HE21	1:B:505:GLN:HA	1.77	0.50
1:A:741:GLY:O	1:A:742:ILE:C	2.50	0.49
1:A:510:PRO:HD3	1:A:569:SER:HB2	1.94	0.48
1:B:154:TRP:CE2	1:B:212:SER:HB3	2.48	0.48
1:B:501:ASP:O	1:B:505:GLN:HG2	2.13	0.48
1:A:107:ILE:HG22	1:A:108:SER:O	2.14	0.48
1:B:620:ASP:OD1	1:B:623:ARG:HD3	2.14	0.47
1:B:562:ASN:HD22	1:B:562:ASN:C	2.17	0.47
1:A:438:ASP:OD2	1:A:441:LYS:HD3	2.14	0.47
1:A:105:TYR:HA	1:A:115:LEU:O	2.15	0.46
4:B:803:NAG:C8	7:B:1056:HOH:O	2.63	0.46
1:A:219:ASN:N	1:A:308:GLN:HE22	2.14	0.46
1:B:330:TYR:HB2	1:B:337:TRP:CH2	2.51	0.46
1:B:512:LYS:HE3	1:B:527:GLN:OE1	2.17	0.45
1:A:666:TYR:CZ	2:A:801:LF7:H1	2.51	0.45
1:B:512:LYS:HE3	1:B:527:GLN:CD	2.36	0.45
1:B:489:LYS:HE3	1:B:489:LYS:HB2	1.63	0.45
1:B:206:GLU:OE1	1:B:663:ASP:OD1	2.35	0.44
4:B:803:NAG:H83	7:B:1056:HOH:O	2.17	0.44
1:A:234:PRO:HB2	1:B:248:TYR:CZ	2.53	0.44
1:A:65:ASP:OD2	1:A:466:LYS:HB2	2.17	0.44
1:A:487:ASN:ND2	1:A:489:LYS:H	2.15	0.44
1:A:127:SER:HB3	1:A:211:TYR:CD1	2.53	0.44
1:A:726:VAL:HG23	1:A:728:VAL:HG23	1.99	0.44
1:A:370:SER:HB2	1:A:387:PHE:O	2.18	0.43
1:B:496:ASP:OD1	1:B:498:SER:HB2	2.18	0.43
1:B:630:SER:HA	1:B:654:ALA:O	2.17	0.43
1:B:510:PRO:HD3	1:B:569:SER:HB2	1.99	0.43
1:A:662:TYR:CE1	2:A:801:LF7:H2	2.54	0.43
1:B:61:ARG:CG	1:B:61:ARG:NH1	2.69	0.43
1:A:458:SER:OG	1:A:471:ARG:NH1	2.52	0.43
1:B:224:ALA:HB1	1:B:268:PHE:CZ	2.54	0.43
1:A:562:ASN:C	1:A:562:ASN:HD22	2.23	0.42
1:B:418:ILE:HA	1:B:430:ASN:O	2.19	0.42
1:B:109:PRO:HD2	1:B:161:GLY:O	2.20	0.42
1:B:546:VAL:HG12	1:B:627:TRP:O	2.18	0.42
1:A:113:PHE:CE2	1:A:178:PRO:HG2	2.54	0.42
1:A:648:LYS:HE2	1:A:762:CYS:O	2.20	0.42
1:B:51:ASN:HB3	7:B:1038:HOH:O	2.20	0.42

*Continued on next page...*

Continued from previous page...

Atom-1	Atom-2	Interatomic distance (Å)	Clash overlap (Å)
1:B:626:ILE:HG23	1:B:636:THR:HG23	2.01	0.42
1:B:765:LEU:HA	1:B:766:PRO:HD2	1.70	0.42
1:A:243:ASP:HB3	7:A:2479:HOH:O	2.20	0.41
1:B:159:PRO:HD3	1:B:216:TRP:CB	2.50	0.41
1:B:669:ARG:HD2	1:B:670:TYR:CZ	2.55	0.41
1:B:640:LEU:HD11	1:B:650:GLY:HA3	2.02	0.41
1:A:345:HIS:CE1	1:A:389:ILE:O	2.73	0.41
1:A:158:SER:OG	1:A:163:LYS:HB2	2.21	0.41
1:B:388:GLN:HB2	1:B:391:LYS:HB2	2.02	0.41
1:A:470:LEU:HD12	1:A:483:HIS:NE2	2.36	0.41
1:A:113:PHE:CZ	1:A:178:PRO:HG2	2.56	0.40
1:A:598:LEU:HG	1:A:631:TYR:OH	2.21	0.40
1:A:302:ASP:HB3	1:A:314:GLN:HB2	2.03	0.40

There are no symmetry-related clashes.

## 5.3 Torsion angles [i](#)

### 5.3.1 Protein backbone [i](#)

In the following table, the Percentiles column shows the percent Ramachandran outliers of the chain as a percentile score with respect to all X-ray entries followed by that with respect to entries of similar resolution.

The Analysed column shows the number of residues for which the backbone conformation was analysed, and the total number of residues.

Mol	Chain	Analysed	Favoured	Allowed	Outliers	Percentiles	
1	A	727/740 (98%)	697 (96%)	30 (4%)	0	100	100
1	B	727/740 (98%)	698 (96%)	28 (4%)	1 (0%)	56	69
All	All	1454/1480 (98%)	1395 (96%)	58 (4%)	1 (0%)	56	69

All (1) Ramachandran outliers are listed below:

Mol	Chain	Res	Type
1	B	714	GLN

### 5.3.2 Protein sidechains ⓘ

In the following table, the Percentiles column shows the percent sidechain outliers of the chain as a percentile score with respect to all X-ray entries followed by that with respect to entries of similar resolution.

The Analysed column shows the number of residues for which the sidechain conformation was analysed, and the total number of residues.

Mol	Chain	Analysed	Rotameric	Outliers	Percentiles	
1	A	654/663 (99%)	633 (97%)	21 (3%)	46	59
1	B	654/663 (99%)	629 (96%)	25 (4%)	40	52
All	All	1308/1326 (99%)	1262 (96%)	46 (4%)	43	56

All (46) residues with a non-rotameric sidechain are listed below:

Mol	Chain	Res	Type
1	A	72	GLN
1	A	97	GLU
1	A	145	GLU
1	A	230	ASP
1	A	250	LYS
1	A	278	SER
1	A	279	VAL
1	A	336	ARG
1	A	379	GLU
1	A	385	CYS
1	A	441	LYS
1	A	472	CYS
1	A	487	ASN
1	A	489	LYS
1	A	505	GLN
1	A	521	GLU
1	A	562	ASN
1	A	566	TYR
1	A	589	LYS
1	A	598	LEU
1	A	627	TRP
1	B	41	LYS
1	B	61	ARG
1	B	94	THR
1	B	101	SER
1	B	140	ARG
1	B	160	VAL

*Continued on next page...*

*Continued from previous page...*

Mol	Chain	Res	Type
1	B	190	LYS
1	B	230	ASP
1	B	280	THR
1	B	324	VAL
1	B	348	MET
1	B	366	LEU
1	B	385	CYS
1	B	390	ASP
1	B	392	LYS
1	B	472	CYS
1	B	498	SER
1	B	504	LEU
1	B	505	GLN
1	B	562	ASN
1	B	566	TYR
1	B	594	ILE
1	B	598	LEU
1	B	745	SER
1	B	761	GLN

Some sidechains can be flipped to improve hydrogen bonding and reduce clashes. All (21) such sidechains are listed below:

Mol	Chain	Res	Type
1	A	112	GLN
1	A	169	ASN
1	A	263	ASN
1	A	286	GLN
1	A	308	GLN
1	A	345	HIS
1	A	487	ASN
1	A	505	GLN
1	A	562	ASN
1	A	572	ASN
1	A	679	ASN
1	A	694	ASN
1	A	697	GLN
1	B	263	ASN
1	B	286	GLN
1	B	308	GLN
1	B	345	HIS
1	B	505	GLN
1	B	562	ASN

*Continued on next page...*

*Continued from previous page...*

Mol	Chain	Res	Type
1	B	679	ASN
1	B	694	ASN

### 5.3.3 RNA ⓘ

There are no RNA molecules in this entry.

## 5.4 Non-standard residues in protein, DNA, RNA chains ⓘ

There are no non-standard protein/DNA/RNA residues in this entry.

## 5.5 Carbohydrates ⓘ

16 carbohydrates are modelled in this entry.

In the following table, the Counts columns list the number of bonds (or angles) for which Mogul statistics could be retrieved, the number of bonds (or angles) that are observed in the model and the number of bonds (or angles) that are defined in the chemical component dictionary. The Link column lists molecule types, if any, to which the group is linked. The Z score for a bond length (or angle) is the number of standard deviations the observed value is removed from the expected value. A bond length (or angle) with  $|Z| > 2$  is considered an outlier worth inspection. RMSZ is the root-mean-square of all Z scores of the bond lengths (or angles).

Mol	Type	Chain	Res	Link	Bond lengths			Bond angles		
					Counts	RMSZ	$\# Z  > 2$	Counts	RMSZ	$\# Z  > 2$
4	NAG	A	803	1,4	14,14,15	0.45	0	15,19,21	1.57	1 (6%)
4	FUL	A	804	4	10,10,11	0.67	0	14,14,16	1.03	2 (14%)
6	NAG	A	807	1,6	14,14,15	0.54	0	15,19,21	1.07	0
6	NAG	A	808	6	14,14,15	0.59	0	15,19,21	1.38	1 (6%)
6	NAG	A	810	1,6	14,14,15	0.65	0	15,19,21	1.09	1 (6%)
6	NAG	A	811	6	14,14,15	0.36	0	15,19,21	1.14	1 (6%)
6	NAG	A	812	1,6	14,14,15	0.50	0	15,19,21	1.81	2 (13%)
6	NAG	A	813	6	14,14,15	0.51	0	15,19,21	1.28	2 (13%)
4	NAG	B	803	1,4	14,14,15	0.55	0	15,19,21	3.78	6 (40%)
4	FUL	B	804	4	10,10,11	0.81	0	14,14,16	1.40	2 (14%)
6	NAG	B	806	1,6	14,14,15	0.57	0	15,19,21	0.89	1 (6%)
6	NAG	B	807	6	14,14,15	0.47	0	15,19,21	1.20	1 (6%)
6	NAG	B	808	1,6	14,14,15	0.55	0	15,19,21	1.08	1 (6%)
6	NAG	B	809	6	14,14,15	0.46	0	15,19,21	1.23	1 (6%)

Mol	Type	Chain	Res	Link	Bond lengths			Bond angles		
					Counts	RMSZ	# Z  > 2	Counts	RMSZ	# Z  > 2
6	NAG	B	811	1,6	14,14,15	0.50	0	15,19,21	1.23	2 (13%)
6	NAG	B	812	6	14,14,15	0.49	0	15,19,21	1.16	1 (6%)

In the following table, the Chirals column lists the number of chiral outliers, the number of chiral centers analysed, the number of these observed in the model and the number defined in the chemical component dictionary. Similar counts are reported in the Torsion and Rings columns. '-' means no outliers of that kind were identified.

Mol	Type	Chain	Res	Link	Chirals	Torsions	Rings
4	NAG	A	803	1,4	-	0/6/23/26	0/1/1/1
4	FUL	A	804	4	-	0/0/17/20	0/1/1/1
6	NAG	A	807	1,6	-	0/6/23/26	0/1/1/1
6	NAG	A	808	6	-	0/6/23/26	0/1/1/1
6	NAG	A	810	1,6	-	0/6/23/26	0/1/1/1
6	NAG	A	811	6	-	0/6/23/26	0/1/1/1
6	NAG	A	812	1,6	-	0/6/23/26	0/1/1/1
6	NAG	A	813	6	-	0/6/23/26	0/1/1/1
4	NAG	B	803	1,4	-	0/6/23/26	0/1/1/1
4	FUL	B	804	4	-	0/0/17/20	0/1/1/1
6	NAG	B	806	1,6	-	0/6/23/26	0/1/1/1
6	NAG	B	807	6	-	0/6/23/26	0/1/1/1
6	NAG	B	808	1,6	-	0/6/23/26	0/1/1/1
6	NAG	B	809	6	-	0/6/23/26	0/1/1/1
6	NAG	B	811	1,6	-	0/6/23/26	0/1/1/1
6	NAG	B	812	6	-	0/6/23/26	0/1/1/1

There are no bond length outliers.

All (25) bond angle outliers are listed below:

Mol	Chain	Res	Type	Atoms	Z	Observed(°)	Ideal(°)
4	B	803	NAG	C4-C3-C2	-4.21	104.68	111.23
6	A	812	NAG	C2-N2-C7	-4.05	117.83	123.04
6	B	811	NAG	C2-N2-C7	-2.48	119.85	123.04
6	B	806	NAG	C1-O5-C5	-2.38	109.22	112.25
6	B	807	NAG	C3-C4-C5	-2.33	106.14	110.20
4	B	803	NAG	O5-C5-C6	-2.32	102.32	107.35
4	A	804	FUL	O5-C1-C2	-2.15	107.37	110.86
6	A	813	NAG	C2-N2-C7	2.26	125.94	123.04
4	B	803	NAG	C8-C7-N2	2.26	120.43	116.11
4	B	804	FUL	C1-O5-C5	2.36	116.03	112.38
4	A	804	FUL	O5-C5-C6	2.44	110.17	106.13

*Continued on next page...*

Continued from previous page...

Mol	Chain	Res	Type	Atoms	Z	Observed(°)	Ideal(°)
4	B	804	FUL	O5-C5-C6	2.74	110.66	106.13
6	B	811	NAG	C1-O5-C5	3.12	116.21	112.25
6	A	813	NAG	C1-O5-C5	3.39	116.55	112.25
6	B	808	NAG	C1-O5-C5	3.39	116.56	112.25
6	A	810	NAG	C1-O5-C5	3.44	116.62	112.25
4	B	803	NAG	C3-C2-N2	3.62	119.22	110.56
6	B	812	NAG	C1-O5-C5	3.69	116.93	112.25
6	A	811	NAG	C1-O5-C5	3.69	116.93	112.25
6	B	809	NAG	C1-O5-C5	4.00	117.32	112.25
6	A	808	NAG	C1-O5-C5	4.25	117.64	112.25
6	A	812	NAG	C1-O5-C5	4.64	118.14	112.25
4	A	803	NAG	C1-O5-C5	5.13	118.76	112.25
4	B	803	NAG	C1-O5-C5	8.94	123.59	112.25
4	B	803	NAG	C2-N2-C7	9.14	134.79	123.04

There are no chirality outliers.

There are no torsion outliers.

There are no ring outliers.

1 monomer is involved in 3 short contacts:

Mol	Chain	Res	Type	Clashes	Symm-Clashes
4	B	803	NAG	3	0

## 5.6 Ligand geometry ⓘ

9 ligands are modelled in this entry.

In the following table, the Counts columns list the number of bonds (or angles) for which Mogul statistics could be retrieved, the number of bonds (or angles) that are observed in the model and the number of bonds (or angles) that are defined in the chemical component dictionary. The Link column lists molecule types, if any, to which the group is linked. The Z score for a bond length (or angle) is the number of standard deviations the observed value is removed from the expected value. A bond length (or angle) with  $|Z| > 2$  is considered an outlier worth inspection. RMSZ is the root-mean-square of all Z scores of the bond lengths (or angles).

Mol	Type	Chain	Res	Link	Bond lengths			Bond angles		
					Counts	RMSZ	# Z  > 2	Counts	RMSZ	# Z  > 2
2	LF7	A	801	1	25,25,25	1.48	1 (4%)	31,39,39	6.24	4 (12%)
3	GOL	A	802	-	5,5,5	0.36	0	5,5,5	0.31	0
5	NAG	A	805	1	14,14,15	0.54	0	15,19,21	1.64	1 (6%)
5	NAG	A	806	1	14,14,15	0.45	0	15,19,21	2.28	1 (6%)

Mol	Type	Chain	Res	Link	Bond lengths			Bond angles		
					Counts	RMSZ	# Z  > 2	Counts	RMSZ	# Z  > 2
5	NAG	A	809	1	14,14,15	0.48	0	15,19,21	1.10	1 (6%)
2	LF7	B	801	1	25,25,25	1.38	1 (4%)	31,39,39	6.13	3 (9%)
3	GOL	B	802	-	5,5,5	0.41	0	5,5,5	0.35	0
5	NAG	B	805	1	14,14,15	0.50	0	15,19,21	1.44	1 (6%)
5	NAG	B	810	1	14,14,15	0.53	0	15,19,21	1.42	2 (13%)

In the following table, the Chirals column lists the number of chiral outliers, the number of chiral centers analysed, the number of these observed in the model and the number defined in the chemical component dictionary. Similar counts are reported in the Torsion and Rings columns. '-' means no outliers of that kind were identified.

Mol	Type	Chain	Res	Link	Chirals	Torsions	Rings
2	LF7	A	801	1	-	0/10/52/52	0/1/4/4
3	GOL	A	802	-	-	0/4/4/4	0/0/0/0
5	NAG	A	805	1	-	0/6/23/26	0/1/1/1
5	NAG	A	806	1	-	0/6/23/26	0/1/1/1
5	NAG	A	809	1	-	0/6/23/26	0/1/1/1
2	LF7	B	801	1	-	0/10/52/52	0/1/4/4
3	GOL	B	802	-	-	0/4/4/4	0/0/0/0
5	NAG	B	805	1	-	0/6/23/26	0/1/1/1
5	NAG	B	810	1	-	0/6/23/26	0/1/1/1

All (2) bond length outliers are listed below:

Mol	Chain	Res	Type	Atoms	Z	Observed(Å)	Ideal(Å)
2	B	801	LF7	C20-N2	5.93	1.26	1.14
2	A	801	LF7	C20-N2	6.48	1.27	1.14

All (13) bond angle outliers are listed below:

Mol	Chain	Res	Type	Atoms	Z	Observed(°)	Ideal(°)
2	A	801	LF7	C16-C20-N2	-34.05	118.22	177.19
2	B	801	LF7	C16-C20-N2	-33.63	118.95	177.19
2	A	801	LF7	C17-C16-C20	-3.73	106.42	112.45
2	B	801	LF7	C17-C16-C20	-3.65	106.54	112.45
2	A	801	LF7	C19-N15-C14	-3.51	115.92	125.58
2	B	801	LF7	C19-N15-C14	-2.80	117.89	125.58
5	A	809	NAG	C3-C2-N2	-2.51	104.55	110.56
2	A	801	LF7	C8-C1-C21	-2.17	106.61	109.44
5	B	810	NAG	O5-C5-C6	2.30	112.32	107.35
5	B	810	NAG	C1-O5-C5	4.14	117.50	112.25

*Continued on next page...*

*Continued from previous page...*

Mol	Chain	Res	Type	Atoms	Z	Observed(°)	Ideal(°)
5	B	805	NAG	C1-O5-C5	4.48	117.93	112.25
5	A	805	NAG	C1-O5-C5	4.80	118.34	112.25
5	A	806	NAG	C1-O5-C5	8.24	122.71	112.25

There are no chirality outliers.

There are no torsion outliers.

There are no ring outliers.

2 monomers are involved in 3 short contacts:

Mol	Chain	Res	Type	Clashes	Symm-Clashes
2	A	801	LF7	2	0
5	A	809	NAG	1	0

## 5.7 Other polymers [i](#)

There are no such residues in this entry.

## 5.8 Polymer linkage issues [i](#)

There are no chain breaks in this entry.

## 6 Fit of model and data ⓘ

### 6.1 Protein, DNA and RNA chains ⓘ

In the following table, the column labelled ‘#RSRZ> 2’ contains the number (and percentage) of RSRZ outliers, followed by percent RSRZ outliers for the chain as percentile scores relative to all X-ray entries and entries of similar resolution. The OWAB column contains the minimum, median, 95<sup>th</sup> percentile and maximum values of the occupancy-weighted average B-factor per residue. The column labelled ‘Q< 0.9’ lists the number of (and percentage) of residues with an average occupancy less than 0.9.

Mol	Chain	Analysed	<RSRZ>	#RSRZ>2	OWAB(Å <sup>2</sup> )	Q<0.9
1	A	729/740 (98%)	-0.14	14 (1%) 70 81	20, 30, 52, 69	0
1	B	729/740 (98%)	-0.20	9 (1%) 81 89	19, 29, 50, 63	0
All	All	1458/1480 (98%)	-0.17	23 (1%) 74 84	19, 30, 51, 69	0

All (23) RSRZ outliers are listed below:

Mol	Chain	Res	Type	RSRZ
1	A	766	PRO	13.0
1	A	765	LEU	8.2
1	B	766	PRO	7.4
1	B	765	LEU	4.9
1	A	97	GLU	3.9
1	B	92	ASN	3.4
1	B	97	GLU	3.4
1	B	74	ASN	3.2
1	A	98	PHE	3.1
1	B	279	VAL	3.0
1	B	73	GLU	3.0
1	A	100	HIS	3.0
1	B	75	ASN	2.9
1	A	96	ASP	2.8
1	A	39	SER	2.8
1	A	73	GLU	2.7
1	A	506	ASN	2.4
1	A	378	GLU	2.4
1	A	95	PHE	2.1
1	A	99	GLY	2.1
1	A	393	ASP	2.1
1	A	138	ASN	2.0
1	B	538	LYS	2.0

## 6.2 Non-standard residues in protein, DNA, RNA chains [i](#)

There are no non-standard protein/DNA/RNA residues in this entry.

## 6.3 Carbohydrates [i](#)

In the following table, the Atoms column lists the number of modelled atoms in the group and the number defined in the chemical component dictionary. LLDF column lists the quality of electron density of the group with respect to its neighbouring residues in protein, DNA or RNA chains. The B-factors column lists the minimum, median, 95<sup>th</sup> percentile and maximum values of B factors of atoms in the group. The column labelled 'Q< 0.9' lists the number of atoms with occupancy less than 0.9.

Mol	Type	Chain	Res	Atoms	RSCC	RSR	LLDF	B-factors(Å <sup>2</sup> )	Q<0.9
6	NAG	B	811	14/15	0.94	0.19	5.30	48,54,56,60	0
6	NAG	A	812	14/15	0.93	0.17	2.32	46,51,54,57	0
6	NAG	A	810	14/15	0.97	0.12	1.15	29,33,37,37	0
4	NAG	B	803	14/15	0.85	0.14	0.91	54,57,62,64	0
6	NAG	B	807	14/15	0.84	0.14	0.76	59,63,66,66	0
6	NAG	A	808	14/15	0.88	0.16	0.49	53,56,59,59	0
6	NAG	B	806	14/15	0.96	0.10	0.26	47,53,56,57	0
6	NAG	A	807	14/15	0.94	0.10	-0.27	38,47,53,53	0
4	NAG	A	803	14/15	0.83	0.13	-0.31	60,62,66,69	0
6	NAG	B	808	14/15	0.95	0.10	-1.14	41,46,51,54	0
4	FUL	A	804	10/11	0.87	0.17	-	69,70,70,70	0
6	NAG	A	813	14/15	0.76	0.30	-	61,64,66,66	0
6	NAG	B	812	14/15	0.81	0.27	-	63,66,68,68	0
6	NAG	A	811	14/15	0.91	0.13	-	38,43,45,45	0
6	NAG	B	809	14/15	0.83	0.20	-	59,62,65,66	0
4	FUL	B	804	10/11	0.76	0.12	-	63,65,66,68	0

## 6.4 Ligands [i](#)

In the following table, the Atoms column lists the number of modelled atoms in the group and the number defined in the chemical component dictionary. LLDF column lists the quality of electron density of the group with respect to its neighbouring residues in protein, DNA or RNA chains. The B-factors column lists the minimum, median, 95<sup>th</sup> percentile and maximum values of B factors of atoms in the group. The column labelled 'Q< 0.9' lists the number of atoms with occupancy less than 0.9.

Mol	Type	Chain	Res	Atoms	RSCC	RSR	LLDF	B-factors(Å <sup>2</sup> )	Q<0.9
3	GOL	A	802	6/6	0.94	0.24	6.12	61,62,62,62	0
3	GOL	B	802	6/6	0.93	0.16	3.72	48,50,52,52	0
2	LF7	B	801	22/22	0.97	0.17	1.84	20,22,23,24	0

*Continued on next page...*

*Continued from previous page...*

Mol	Type	Chain	Res	Atoms	RSCC	RSR	LLDF	B-factors( $\text{\AA}^2$ )	Q<0.9
5	NAG	A	809	14/15	0.94	0.15	0.98	34,37,41,45	0
2	LF7	A	801	22/22	0.97	0.15	0.08	22,25,27,28	0
5	NAG	B	810	14/15	0.90	0.10	-	55,57,58,59	0
5	NAG	A	806	14/15	0.86	0.31	-	58,63,64,64	0
5	NAG	A	805	14/15	0.80	0.27	-	75,77,78,78	0
5	NAG	B	805	14/15	0.86	0.22	-	53,56,59,60	0

## 6.5 Other polymers [i](#)

There are no such residues in this entry.