



# Full wwPDB X-ray Structure Validation Report ⓘ

Feb 1, 2016 – 06:10 AM GMT

PDB ID : 2W6N  
Title : CRYSTAL STRUCTURE OF BIOTIN CARBOXYLASE FROM E. COLI IN  
COMPLEX WITH AMINO-OXAZOLE FRAGMENT SERIES  
Authors : Mochalkin, I.; Miller, J.R.  
Deposited on : 2008-12-18  
Resolution : 1.87 Å(reported)

This is a Full wwPDB X-ray Structure Validation Report for a publicly released PDB entry.  
We welcome your comments at [validation@mail.wwpdb.org](mailto:validation@mail.wwpdb.org)  
A user guide is available at  
<http://wwpdb.org/validation/2016/XrayValidationReportHelp>  
with specific help available everywhere you see the ⓘ symbol.

---

The following versions of software and data (see [references ⓘ](#)) were used in the production of this report:

MolProbity : 4.02b-467  
Mogul : 1.7 (RC4), CSD as536be (2015)  
Xtriage (Phenix) : 1.9-1692  
EDS : rb-20026688  
Percentile statistics : 20151230.v01 (using entries in the PDB archive December 30th 2015)  
Refmac : 5.8.0135  
CCP4 : 6.5.0  
Ideal geometry (proteins) : Engh & Huber (2001)  
Ideal geometry (DNA, RNA) : Parkinson et al. (1996)  
Validation Pipeline (wwPDB-VP) : trunk26865

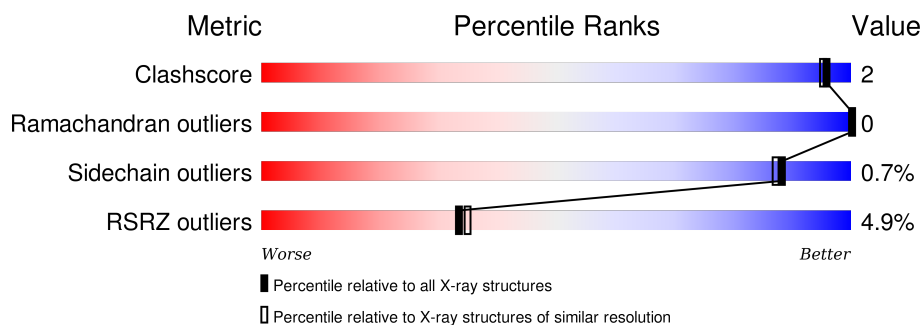
# 1 Overall quality at a glance

The following experimental techniques were used to determine the structure:

*X-RAY DIFFRACTION*

The reported resolution of this entry is 1.87 Å.

Percentile scores (ranging between 0-100) for global validation metrics of the entry are shown in the following graphic. The table shows the number of entries on which the scores are based.



Metric	Whole archive (#Entries)	Similar resolution (#Entries, resolution range(Å))
Clashscore	102246	7778 (1.90-1.86)
Ramachandran outliers	100387	7691 (1.90-1.86)
Sidechain outliers	100360	7692 (1.90-1.86)
RSRZ outliers	91569	6979 (1.90-1.86)

The table below summarises the geometric issues observed across the polymeric chains and their fit to the electron density. The red, orange, yellow and green segments on the lower bar indicate the fraction of residues that contain outliers for  $\geq 3$ , 2, 1 and 0 types of geometric quality criteria. A grey segment represents the fraction of residues that are not modelled. The numeric value for each fraction is indicated below the corresponding segment, with a dot representing fractions  $\leq 5\%$ . The upper red bar (where present) indicates the fraction of residues that have poor fit to the electron density. The numeric value is given above the bar.

Mol	Chain	Length	Quality of chain
1	A	449	<div> <div></div> <div>96%</div> <div>..</div> </div>
1	B	449	<div> <div>10%</div> <div>95%</div> <div>..</div> </div>

## 2 Entry composition [i](#)

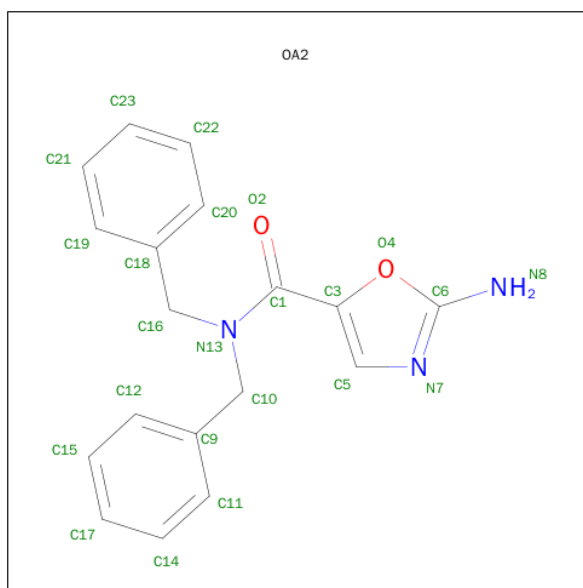
There are 4 unique types of molecules in this entry. The entry contains 7959 atoms, of which 0 are hydrogens and 0 are deuteriums.

In the tables below, the ZeroOcc column contains the number of atoms modelled with zero occupancy, the AltConf column contains the number of residues with at least one atom in alternate conformation and the Trace column contains the number of residues modelled with at most 2 atoms.

- Molecule 1 is a protein called BIOTIN CARBOXYLASE.

Mol	Chain	Residues	Atoms					ZeroOcc	AltConf	Trace
1	A	445	Total	C	N	O	S	0	0	0
			3425	2157	612	634	22			
1	B	445	Total	C	N	O	S	0	0	0
			3425	2157	612	634	22			

- Molecule 2 is 2-AMINO-N,N-BIS(PHENYLMETHYL)-1,3-OXAZOLE-5-CARBOXAMIDE (three-letter code: OA2) (formula: C<sub>18</sub>H<sub>17</sub>N<sub>3</sub>O<sub>2</sub>).



Mol	Chain	Residues	Atoms				ZeroOcc	AltConf
2	A	1	Total	C	N	O	0	0
			23	18	3	2		
2	B	1	Total	C	N	O	0	0
			23	18	3	2		

- Molecule 3 is CHLORIDE ION (three-letter code: CL) (formula: Cl).

Mol	Chain	Residues	Atoms		ZeroOcc	AltConf
3	B	1	Total 1	Cl 1	0	0
3	A	1	Total 1	Cl 1	0	0

- Molecule 4 is water.

Mol	Chain	Residues	Atoms		ZeroOcc	AltConf
4	A	598	Total 598	O 598	0	0
4	B	463	Total 463	O 463	0	0

### 3 Residue-property plots [i](#)

These plots are drawn for all protein, RNA and DNA chains in the entry. The first graphic for a chain summarises the proportions of errors displayed in the second graphic. The second graphic shows the sequence view annotated by issues in geometry and electron density. Residues are color-coded according to the number of geometric quality criteria for which they contain at least one outlier: green = 0, yellow = 1, orange = 2 and red = 3 or more. A red dot above a residue indicates a poor fit to the electron density ( $RSRZ > 2$ ). Stretches of 2 or more consecutive residues without any outlier are shown as a green connector. Residues present in the sample, but not in the model, are shown in grey.

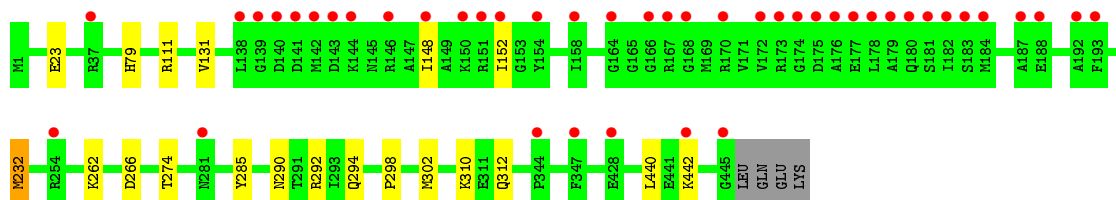
#### • Molecule 1: BIOTIN CARBOXYLASE

Chain A:  96%



#### • Molecule 1: BIOTIN CARBOXYLASE

Chain B:  10% 95%



## 4 Data and refinement statistics

Property	Value	Source
Space group	P 21 21 21	Depositor
Cell constants a, b, c, $\alpha$ , $\beta$ , $\gamma$	84.14Å 105.94Å 122.45Å 90.00° 90.00° 90.00°	Depositor
Resolution (Å)	80.06 – 1.87 49.51 – 1.87	Depositor EDS
% Data completeness (in resolution range)	95.0 (80.06-1.87) 90.4 (49.51-1.87)	Depositor EDS
$R_{merge}$	0.05	Depositor
$R_{sym}$	(Not available)	Depositor
$\langle I/\sigma(I) \rangle$ <sup>1</sup>	2.72 (at 1.87Å)	Xtriage
Refinement program	REFMAC 5.2.0005	Depositor
R, $R_{free}$	0.175 , 0.217 0.189 , (Not available)	Depositor DCC
$R_{free}$ test set	No test flags present.	DCC
Wilson B-factor (Å <sup>2</sup> )	19.3	Xtriage
Anisotropy	0.202	Xtriage
Bulk solvent $k_{sol}$ (e/Å <sup>3</sup> ), $B_{sol}$ (Å <sup>2</sup> )	0.36 , 48.3	EDS
Estimated twinning fraction	No twinning to report.	Xtriage
L-test for twinning <sup>2</sup>	$\langle  L  \rangle = 0.50$ , $\langle L^2 \rangle = 0.34$	Xtriage
Outliers	3 of 86286 reflections (0.003%)	Xtriage
$F_o, F_c$ correlation	0.95	EDS
Total number of atoms	7959	wwPDB-VP
Average B, all atoms (Å <sup>2</sup> )	22.0	wwPDB-VP

Xtriage's analysis on translational NCS is as follows: *The largest off-origin peak in the Patterson function is 4.54% of the height of the origin peak. No significant pseudotranslation is detected.*

<sup>1</sup>Intensities estimated from amplitudes.

<sup>2</sup>Theoretical values of  $\langle |L| \rangle$ ,  $\langle L^2 \rangle$  for acentric reflections are 0.5, 0.375 respectively for untwinned datasets, and 0.333, 0.2 for perfectly twinned datasets.

## 5 Model quality [i](#)

### 5.1 Standard geometry [i](#)

Bond lengths and bond angles in the following residue types are not validated in this section: OA2, CL

The Z score for a bond length (or angle) is the number of standard deviations the observed value is removed from the expected value. A bond length (or angle) with  $|Z| > 5$  is considered an outlier worth inspection. RMSZ is the root-mean-square of all Z scores of the bond lengths (or angles).

Mol	Chain	Bond lengths		Bond angles	
		RMSZ	$\# Z  > 5$	RMSZ	$\# Z  > 5$
1	A	0.44	0/3488	0.60	2/4707 (0.0%)
1	B	0.44	0/3488	0.59	0/4707
All	All	0.44	0/6976	0.60	2/9414 (0.0%)

There are no bond length outliers.

All (2) bond angle outliers are listed below:

Mol	Chain	Res	Type	Atoms	Z	Observed(°)	Ideal(°)
1	A	314	ARG	NE-CZ-NH2	-5.41	117.60	120.30
1	A	314	ARG	NE-CZ-NH1	5.30	122.95	120.30

There are no chirality outliers.

There are no planarity outliers.

### 5.2 Too-close contacts [i](#)

In the following table, the Non-H and H(model) columns list the number of non-hydrogen atoms and hydrogen atoms in the chain respectively. The H(added) column lists the number of hydrogen atoms added and optimized by MolProbity. The Clashes column lists the number of clashes within the asymmetric unit, whereas Symm-Clashes lists symmetry related clashes.

Mol	Chain	Non-H	H(model)	H(added)	Clashes	Symm-Clashes
1	A	3425	0	3448	6	0
1	B	3425	0	3448	14	0
2	A	23	0	17	0	0
2	B	23	0	17	1	0
3	A	1	0	0	0	0
3	B	1	0	0	1	0
4	A	598	0	0	2	0

*Continued on next page...*

*Continued from previous page...*

Mol	Chain	Non-H	H(model)	H(added)	Clashes	Symm-Clashes
4	B	463	0	0	1	0
All	All	7959	0	6930	21	0

The all-atom clashscore is defined as the number of clashes found per 1000 atoms (including hydrogen atoms). The all-atom clashscore for this structure is 2.

All (21) close contacts within the same asymmetric unit are listed below, sorted by their clash magnitude.

Atom-1	Atom-2	Interatomic distance (Å)	Clash overlap (Å)
1:B:232:MET:HE2	1:B:440:LEU:HB2	1.75	0.68
1:A:79:HIS:HD1	1:A:81:GLY:H	1.45	0.64
1:A:340:ASN:HD22	1:A:384:MET:HA	1.63	0.64
1:B:232:MET:CE	1:B:440:LEU:HB2	2.31	0.59
1:B:292:ARG:NH1	3:B:1447:CL:CL	2.75	0.56
1:B:274:THR:HG21	1:B:294:GLN:HE22	1.72	0.54
1:B:232:MET:HE3	4:B:2455:HOH:O	2.09	0.52
1:B:23:GLU:OE1	1:B:310:LYS:CE	2.59	0.49
1:B:79:HIS:HE2	1:B:312:GLN:NE2	2.12	0.47
1:B:131:VAL:HG22	1:B:285:TYR:HB3	1.97	0.47
1:B:262:LYS:NZ	1:B:266:ASP:OD1	2.45	0.47
1:B:232:MET:CE	1:B:232:MET:HA	2.46	0.46
2:B:1446:OA2:H102	2:B:1446:OA2:H5	1.99	0.45
1:B:290:ASN:ND2	1:B:294:GLN:OE1	2.52	0.43
1:A:314:ARG:HD3	4:A:2458:HOH:O	2.18	0.43
1:B:148:ILE:HG22	1:B:152:ILE:HD12	2.01	0.43
1:A:1:MET:HE3	1:A:2:LEU:H	1.84	0.43
1:B:23:GLU:OE1	1:B:310:LYS:NZ	2.50	0.41
1:A:404:ASN:ND2	4:A:2552:HOH:O	2.53	0.41
1:A:298:PRO:O	1:A:302:MET:HG2	2.22	0.40
1:B:298:PRO:O	1:B:302:MET:HG2	2.22	0.40

There are no symmetry-related clashes.

## 5.3 Torsion angles

### 5.3.1 Protein backbone

In the following table, the Percentiles column shows the percent Ramachandran outliers of the chain as a percentile score with respect to all X-ray entries followed by that with respect to entries of similar resolution.

The Analysed column shows the number of residues for which the backbone conformation was analysed, and the total number of residues.

Mol	Chain	Analysed	Favoured	Allowed	Outliers	Percentiles	
1	A	443/449 (99%)	435 (98%)	8 (2%)	0	100	100
1	B	443/449 (99%)	433 (98%)	10 (2%)	0	100	100
All	All	886/898 (99%)	868 (98%)	18 (2%)	0	100	100

There are no Ramachandran outliers to report.

### 5.3.2 Protein sidechains ⓘ

In the following table, the Percentiles column shows the percent sidechain outliers of the chain as a percentile score with respect to all X-ray entries followed by that with respect to entries of similar resolution.

The Analysed column shows the number of residues for which the sidechain conformation was analysed, and the total number of residues.

Mol	Chain	Analysed	Rotameric	Outliers	Percentiles	
1	A	357/361 (99%)	355 (99%)	2 (1%)	90	89
1	B	357/361 (99%)	354 (99%)	3 (1%)	86	85
All	All	714/722 (99%)	709 (99%)	5 (1%)	88	87

All (5) residues with a non-rotameric sidechain are listed below:

Mol	Chain	Res	Type
1	A	237	GLN
1	A	323	ILE
1	B	111	ARG
1	B	232	MET
1	B	442	LYS

Some sidechains can be flipped to improve hydrogen bonding and reduce clashes. All (13) such sidechains are listed below:

Mol	Chain	Res	Type
1	A	180	GLN
1	A	206	ASN
1	A	312	GLN
1	A	319	GLN
1	A	340	ASN

*Continued on next page...*

*Continued from previous page...*

Mol	Chain	Res	Type
1	A	404	ASN
1	A	431	GLN
1	B	94	GLN
1	B	290	ASN
1	B	294	GLN
1	B	312	GLN
1	B	319	GLN
1	B	404	ASN

### 5.3.3 RNA [i](#)

There are no RNA molecules in this entry.

### 5.4 Non-standard residues in protein, DNA, RNA chains [i](#)

There are no non-standard protein/DNA/RNA residues in this entry.

### 5.5 Carbohydrates [i](#)

There are no carbohydrates in this entry.

### 5.6 Ligand geometry [i](#)

Of 4 ligands modelled in this entry, 2 are monoatomic - leaving 2 for Mogul analysis.

In the following table, the Counts columns list the number of bonds (or angles) for which Mogul statistics could be retrieved, the number of bonds (or angles) that are observed in the model and the number of bonds (or angles) that are defined in the chemical component dictionary. The Link column lists molecule types, if any, to which the group is linked. The Z score for a bond length (or angle) is the number of standard deviations the observed value is removed from the expected value. A bond length (or angle) with  $|Z| > 2$  is considered an outlier worth inspection. RMSZ is the root-mean-square of all Z scores of the bond lengths (or angles).

Mol	Type	Chain	Res	Link	Bond lengths			Bond angles		
					Counts	RMSZ	$\# Z  > 2$	Counts	RMSZ	$\# Z  > 2$
2	OA2	A	1446	-	23,25,25	0.62	0	26,33,33	0.99	1 (3%)
2	OA2	B	1446	-	23,25,25	0.67	0	26,33,33	0.94	2 (7%)

In the following table, the Chirals column lists the number of chiral outliers, the number of chiral centers analysed, the number of these observed in the model and the number defined in the chemical

component dictionary. Similar counts are reported in the Torsion and Rings columns. '-' means no outliers of that kind were identified.

Mol	Type	Chain	Res	Link	Chirals	Torsions	Rings
2	OA2	A	1446	-	-	0/12/16/16	0/2/3/3
2	OA2	B	1446	-	-	0/12/16/16	0/2/3/3

There are no bond length outliers.

All (3) bond angle outliers are listed below:

Mol	Chain	Res	Type	Atoms	Z	Observed(°)	Ideal(°)
2	B	1446	OA2	O2-C1-N13	-2.21	118.91	122.42
2	A	1446	OA2	C3-C1-N13	2.37	125.31	119.61
2	B	1446	OA2	C3-C1-N13	2.61	125.88	119.61

There are no chirality outliers.

There are no torsion outliers.

There are no ring outliers.

1 monomer is involved in 1 short contact:

Mol	Chain	Res	Type	Clashes	Symm-Clashes
2	B	1446	OA2	1	0

## 5.7 Other polymers [i](#)

There are no such residues in this entry.

## 5.8 Polymer linkage issues [i](#)

There are no chain breaks in this entry.

## 6 Fit of model and data ⓘ

### 6.1 Protein, DNA and RNA chains ⓘ

In the following table, the column labelled ‘#RSRZ> 2’ contains the number (and percentage) of RSRZ outliers, followed by percent RSRZ outliers for the chain as percentile scores relative to all X-ray entries and entries of similar resolution. The OWAB column contains the minimum, median, 95<sup>th</sup> percentile and maximum values of the occupancy-weighted average B-factor per residue. The column labelled ‘Q< 0.9’ lists the number of (and percentage) of residues with an average occupancy less than 0.9.

Mol	Chain	Analysed	<RSRZ>	#RSRZ>2	OWAB(Å <sup>2</sup> )	Q<0.9
1	A	445/449 (99%)	-0.16	0 100 100	13, 18, 27, 34	3 (0%)
1	B	445/449 (99%)	0.39	44 (9%) 9 10	12, 19, 46, 52	4 (0%)
All	All	890/898 (99%)	0.11	44 (4%) 33 35	12, 18, 39, 52	7 (0%)

All (44) RSRZ outliers are listed below:

Mol	Chain	Res	Type	RSRZ
1	B	142	MET	5.5
1	B	347	PHE	5.1
1	B	144	LYS	4.9
1	B	143	ASP	4.8
1	B	168	GLY	4.5
1	B	154	TYR	4.3
1	B	152	ILE	4.2
1	B	180	GLN	4.2
1	B	176	ALA	4.1
1	B	146	ARG	3.9
1	B	150	LYS	3.8
1	B	141	ASP	3.7
1	B	172	VAL	3.7
1	B	167	ARG	3.7
1	B	183	SER	3.6
1	B	140	ASP	3.6
1	B	344	PRO	3.6
1	B	178	LEU	3.3
1	B	174	GLY	3.3
1	B	179	ALA	3.3
1	B	173	ARG	3.2
1	B	177	GLU	3.2
1	B	182	ILE	3.0
1	B	281	ASN	3.0

*Continued on next page...*

*Continued from previous page...*

Mol	Chain	Res	Type	RSRZ
1	B	184	MET	3.0
1	B	138	LEU	2.9
1	B	175	ASP	2.8
1	B	148	ILE	2.8
1	B	188	GLU	2.7
1	B	442	LYS	2.6
1	B	151	ARG	2.6
1	B	445	GLY	2.6
1	B	254	ARG	2.6
1	B	193	PHE	2.5
1	B	164	GLY	2.5
1	B	37	ARG	2.3
1	B	181	SER	2.3
1	B	170	ARG	2.2
1	B	187	ALA	2.2
1	B	158	ILE	2.2
1	B	428	GLU	2.1
1	B	166	GLY	2.0
1	B	139	GLY	2.0
1	B	192	ALA	2.0

## 6.2 Non-standard residues in protein, DNA, RNA chains [i](#)

There are no non-standard protein/DNA/RNA residues in this entry.

## 6.3 Carbohydrates [i](#)

There are no carbohydrates in this entry.

## 6.4 Ligands [i](#)

In the following table, the Atoms column lists the number of modelled atoms in the group and the number defined in the chemical component dictionary. LLDF column lists the quality of electron density of the group with respect to its neighbouring residues in protein, DNA or RNA chains. The B-factors column lists the minimum, median, 95<sup>th</sup> percentile and maximum values of B factors of atoms in the group. The column labelled 'Q< 0.9' lists the number of atoms with occupancy less than 0.9.

Mol	Type	Chain	Res	Atoms	RSCC	RSR	LLDF	B-factors(Å <sup>2</sup> )	Q<0.9
2	OA2	B	1446	23/23	0.91	0.14	0.12	26,29,34,34	0

*Continued on next page...*

*Continued from previous page...*

Mol	Type	Chain	Res	Atoms	RSCC	RSR	LLDF	B-factors( $\text{\AA}^2$ )	Q<0.9
2	OA2	A	1446	23/23	0.96	0.08	-0.52	15,20,21,21	0
3	CL	A	1447	1/1	1.00	0.11	-1.28	17,17,17,17	0
3	CL	B	1447	1/1	0.99	0.09	-3.32	24,24,24,24	0

## 6.5 Other polymers

There are no such residues in this entry.