



Full wwPDB X-ray Structure Validation Report ⓘ

Jan 31, 2016 – 11:02 PM GMT

PDB ID : 1W9D
Title : S. ALBA MYROSINASE IN COMPLEX WITH S-ETHYL PHENYLACET
OTHIOHYDROXIMATE-O-SULFATE
Authors : Bourderioux, A.; Lefoix, M.; Gueyrard, D.; Tatibouet, A.; Cottaz, S.; Arzt,
S.; Burmeister, W.P.; Rollin, P.
Deposited on : 2004-10-08
Resolution : 1.60 Å(reported)

This is a Full wwPDB X-ray Structure Validation Report for a publicly released PDB entry.
We welcome your comments at validation@mail.wwpdb.org
A user guide is available at
<http://wwpdb.org/validation/2016/XrayValidationReportHelp>
with specific help available everywhere you see the ⓘ symbol.

The following versions of software and data (see [references ⓘ](#)) were used in the production of this report:

MolProbity : 4.02b-467
Mogul : 1.7 (RC4), CSD as536be (2015)
Xtriage (Phenix) : 1.9-1692
EDS : rb-20026688
Percentile statistics : 20151230.v01 (using entries in the PDB archive December 30th 2015)
Refmac : 5.8.0135
CCP4 : 6.5.0
Ideal geometry (proteins) : Engh & Huber (2001)
Ideal geometry (DNA, RNA) : Parkinson et al. (1996)
Validation Pipeline (wwPDB-VP) : trunk26865

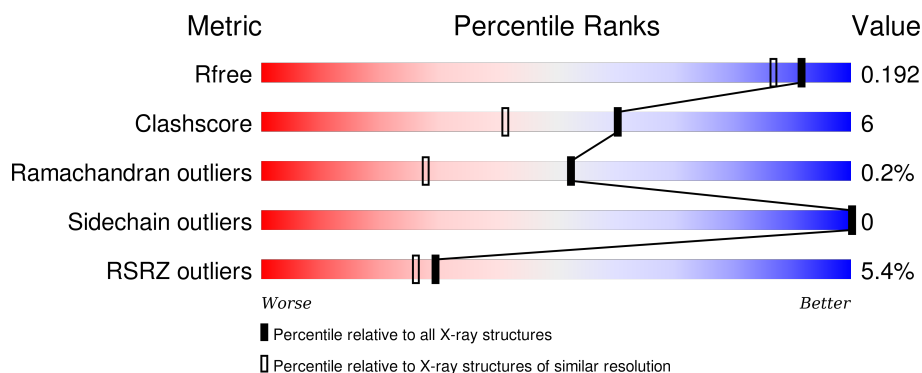
1 Overall quality at a glance

The following experimental techniques were used to determine the structure:

X-RAY DIFFRACTION

The reported resolution of this entry is 1.60 Å.

Percentile scores (ranging between 0-100) for global validation metrics of the entry are shown in the following graphic. The table shows the number of entries on which the scores are based.



Metric	Whole archive (#Entries)	Similar resolution (#Entries, resolution range(Å))
R_{free}	91344	2475 (1.60-1.60)
Clashscore	102246	2732 (1.60-1.60)
Ramachandran outliers	100387	2654 (1.60-1.60)
Sidechain outliers	100360	2653 (1.60-1.60)
RSRZ outliers	91569	2479 (1.60-1.60)

The table below summarises the geometric issues observed across the polymeric chains and their fit to the electron density. The red, orange, yellow and green segments on the lower bar indicate the fraction of residues that contain outliers for ≥ 3 , 2, 1 and 0 types of geometric quality criteria. A grey segment represents the fraction of residues that are not modelled. The numeric value for each fraction is indicated below the corresponding segment, with a dot representing fractions $\leq 5\%$. The upper red bar (where present) indicates the fraction of residues that have poor fit to the electron density. The numeric value is given above the bar.

Mol	Chain	Length	Quality of chain
1	M	501	<div> <div>5%</div> <div>92%</div> <div>7%</div> </div>

The following table lists non-polymeric compounds, carbohydrate monomers and non-standard residues in protein, DNA, RNA chains that are outliers for geometric or electron-density-fit criteria:

Mol	Type	Chain	Res	Chirality	Geometry	Clashes	Electron density
6	SEH	M	999	-	-	X	X

Continued on next page...

Continued from previous page...

Mol	Type	Chain	Res	Chirality	Geometry	Clashes	Electron density
8	SO4	M	1503	-	-	-	X
8	SO4	M	1505	-	-	-	X
9	GOL	M	1512	-	-	-	X
9	GOL	M	1513	-	-	-	X
9	GOL	M	1514	-	-	X	-

2 Entry composition [i](#)

There are 10 unique types of molecules in this entry. The entry contains 5112 atoms, of which 0 are hydrogens and 0 are deuteriums.

In the tables below, the ZeroOcc column contains the number of atoms modelled with zero occupancy, the AltConf column contains the number of residues with at least one atom in alternate conformation and the Trace column contains the number of residues modelled with at most 2 atoms.

- Molecule 1 is a protein called GLYCOSIDASE.

Mol	Chain	Residues	Atoms					ZeroOcc	AltConf	Trace
1	M	499	Total	C	N	O	S	0	0	0
			4016	2571	659	770	16			

- Molecule 2 is SUGAR (N-ACETYL-D-GLUCOSAMINE) (three-letter code: NAG) (formula: $C_8H_{15}NO_6$).



Mol	Chain	Residues	Atoms				ZeroOcc	AltConf
2	M	1	Total	C	N	O	0	0
			14	8	1	5		
2	M	1	Total	C	N	O	0	0
			14	8	1	5		
2	M	1	Total	C	N	O	0	0
			14	8	1	5		
2	M	1	Total	C	N	O	0	0
			15	8	1	6		
2	M	1	Total	C	N	O	0	0
			14	8	1	5		

Continued on next page...

Continued from previous page...

Mol	Chain	Residues	Atoms				ZeroOcc	AltConf
2	M	1	Total	C	N	O	0	0
			14	8	1	5		

- Molecule 3 is a polymer of unknown type called SUGAR (2-MER).

Mol	Chain	Residues	Atoms				ZeroOcc	AltConf
3	M	2	Total	C	N	O	0	0
			28	16	2	10		
3	M	2	Total	C	N	O	0	0
			28	16	2	10		

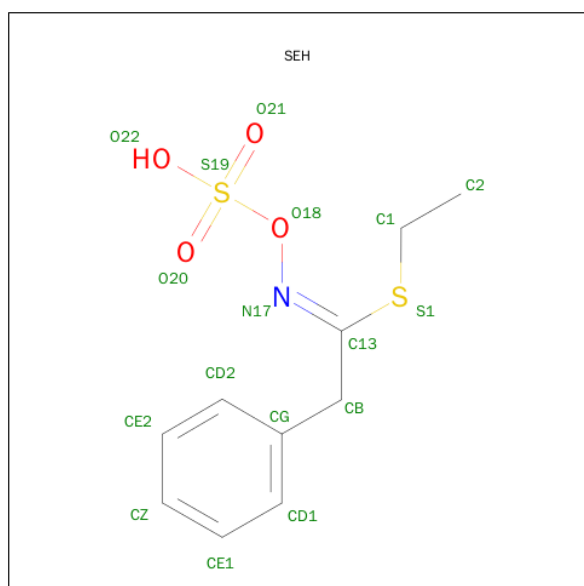
- Molecule 4 is a polymer of unknown type called SUGAR (5-MER).

Mol	Chain	Residues	Atoms				ZeroOcc	AltConf
4	M	5	Total	C	N	O	0	0
			58	33	2	23		

- Molecule 5 is a polymer of unknown type called SUGAR (7-MER).

Mol	Chain	Residues	Atoms				ZeroOcc	AltConf
5	M	7	Total	C	N	O	0	0
			80	45	2	33		

- Molecule 6 is S-BENZYL PHENYLACETOTHIOLHYDROXIMATE-O-SULFATE (three-letter code: SEH) (formula: C₁₀H₁₃NO₄S₂).

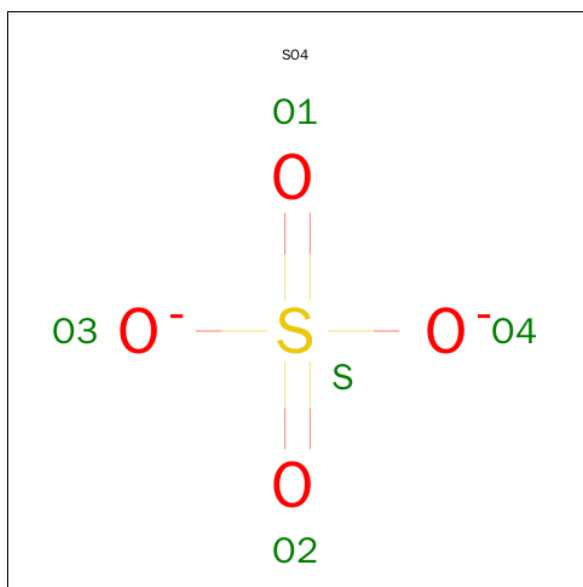


Mol	Chain	Residues	Atoms					ZeroOcc	AltConf
6	M	1	Total	C	N	O	S	0	0
			17	10	1	4	2		

- Molecule 7 is ZINC ION (three-letter code: ZN) (formula: Zn).

Mol	Chain	Residues	Atoms		ZeroOcc	AltConf
7	M	1	Total	Zn	0	0
			1	1		

- Molecule 8 is SULFATE ION (three-letter code: SO4) (formula: O₄S).



Mol	Chain	Residues	Atoms			ZeroOcc	AltConf
8	M	1	Total	O	S	0	0
			5	4	1		
8	M	1	Total	O	S	0	0
			5	4	1		
8	M	1	Total	O	S	0	0
			5	4	1		
8	M	1	Total	O	S	0	0
			5	4	1		

- Molecule 9 is GLYCEROL (three-letter code: GOL) (formula: C₃H₈O₃).



Mol	Chain	Residues	Atoms			ZeroOcc	AltConf
9	M	1	Total	C	O	0	0
			6	3	3		
9	M	1	Total	C	O	0	0
			6	3	3		
9	M	1	Total	C	O	0	0
			6	3	3		

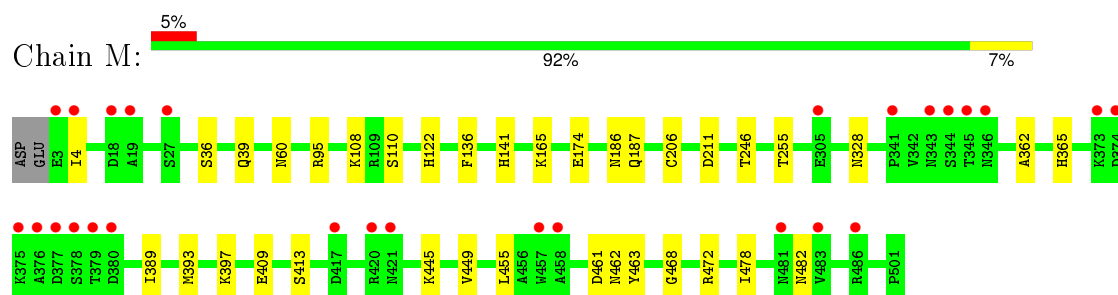
- Molecule 10 is water.

Mol	Chain	Residues	Atoms		ZeroOcc	AltConf
10	M	761	Total	O	0	0
			761	761		

3 Residue-property plots [i](#)

These plots are drawn for all protein, RNA and DNA chains in the entry. The first graphic for a chain summarises the proportions of errors displayed in the second graphic. The second graphic shows the sequence view annotated by issues in geometry and electron density. Residues are color-coded according to the number of geometric quality criteria for which they contain at least one outlier: green = 0, yellow = 1, orange = 2 and red = 3 or more. A red dot above a residue indicates a poor fit to the electron density ($RSRZ > 2$). Stretches of 2 or more consecutive residues without any outlier are shown as a green connector. Residues present in the sample, but not in the model, are shown in grey.

• Molecule 1: GLYCOSIDASE



4 Data and refinement statistics

Property	Value	Source
Space group	C 2 2 21	Depositor
Cell constants a, b, c, α , β , γ	135.30Å 137.20Å 80.60Å 90.00° 90.00° 90.00°	Depositor
Resolution (Å)	35.00 – 1.60 34.75 – 1.39	Depositor EDS
% Data completeness (in resolution range)	99.2 (35.00-1.60) 97.8 (34.75-1.39)	Depositor EDS
R_{merge}	0.05	Depositor
R_{sym}	(Not available)	Depositor
$\langle I/\sigma(I) \rangle$ ¹	1.69 (at 1.39Å)	Xtriage
Refinement program	CNS 1.0	Depositor
R, R_{free}	0.189 , 0.195 0.195 , 0.192	Depositor DCC
R_{free} test set	4885 reflections (4.99%)	DCC
Wilson B-factor (Å ²)	11.4	Xtriage
Anisotropy	0.143	Xtriage
Bulk solvent k_{sol} (e/Å ³), B_{sol} (Å ²)	0.41 , 54.0	EDS
Estimated twinning fraction	0.012 for -k,-h,-l	Xtriage
L-test for twinning ²	$\langle L \rangle = 0.50$, $\langle L^2 \rangle = 0.33$	Xtriage
Outliers	0 of 146737 reflections	Xtriage
F_o, F_c correlation	0.96	EDS
Total number of atoms	5112	wwPDB-VP
Average B, all atoms (Å ²)	19.0	wwPDB-VP

Xtriage's analysis on translational NCS is as follows: *The largest off-origin peak in the Patterson function is 5.04% of the height of the origin peak. No significant pseudotranslation is detected.*

¹Intensities estimated from amplitudes.

²Theoretical values of $\langle |L| \rangle$, $\langle L^2 \rangle$ for acentric reflections are 0.5, 0.375 respectively for untwinned datasets, and 0.333, 0.2 for perfectly twinned datasets.

5 Model quality

5.1 Standard geometry

Bond lengths and bond angles in the following residue types are not validated in this section: XYP, GOL, ZN, BMA, NAG, SO4, FUC, MAN, SEH

The Z score for a bond length (or angle) is the number of standard deviations the observed value is removed from the expected value. A bond length (or angle) with $|Z| > 5$ is considered an outlier worth inspection. RMSZ is the root-mean-square of all Z scores of the bond lengths (or angles).

Mol	Chain	Bond lengths		Bond angles	
		RMSZ	$\# Z > 5$	RMSZ	$\# Z > 5$
1	M	0.30	0/4137	0.60	0/5624

There are no bond length outliers.

There are no bond angle outliers.

There are no chirality outliers.

There are no planarity outliers.

5.2 Too-close contacts

In the following table, the Non-H and H(model) columns list the number of non-hydrogen atoms and hydrogen atoms in the chain respectively. The H(added) column lists the number of hydrogen atoms added and optimized by MolProbity. The Clashes column lists the number of clashes within the asymmetric unit, whereas Symm-Clashes lists symmetry related clashes.

Mol	Chain	Non-H	H(model)	H(added)	Clashes	Symm-Clashes
1	M	4016	0	3772	26	0
2	M	85	0	80	7	0
3	M	56	0	50	1	0
4	M	58	0	50	0	0
5	M	80	0	68	1	0
6	M	17	0	13	18	0
7	M	1	0	0	0	0
8	M	20	0	0	0	0
9	M	18	0	24	15	0
10	M	761	0	0	8	0
All	All	5112	0	4057	46	0

The all-atom clashscore is defined as the number of clashes found per 1000 atoms (including hydrogen atoms). The all-atom clashscore for this structure is 6.

All (46) close contacts within the same asymmetric unit are listed below, sorted by their clash magnitude.

Atom-1	Atom-2	Interatomic distance (Å)	Clash overlap (Å)
6:M:999:SEH:H2C1	9:M:1514:GOL:C1	1.44	1.48
6:M:999:SEH:C2	9:M:1514:GOL:H32	1.58	1.31
6:M:999:SEH:C2	9:M:1514:GOL:H12	1.63	1.28
6:M:999:SEH:C2	9:M:1514:GOL:C1	2.15	1.25
6:M:999:SEH:H2C3	9:M:1514:GOL:C3	1.71	1.16
6:M:999:SEH:H2C2	9:M:1514:GOL:H31	1.39	1.00
6:M:999:SEH:H2C3	9:M:1514:GOL:H32	0.94	0.94
6:M:999:SEH:C2	9:M:1514:GOL:H31	1.90	0.88
6:M:999:SEH:H2C2	9:M:1514:GOL:C3	1.94	0.86
6:M:999:SEH:H2C2	9:M:1514:GOL:C1	2.14	0.76
6:M:999:SEH:C2	9:M:1514:GOL:C2	2.63	0.76
6:M:999:SEH:C2	9:M:1514:GOL:H11	2.15	0.76
6:M:999:SEH:H2C1	9:M:1514:GOL:C2	2.16	0.76
1:M:246:THR:HG22	10:M:2380:HOH:O	1.84	0.76
5:M:954:BMA:H61	10:M:2714:HOH:O	1.85	0.75
1:M:165:LYS:NZ	2:M:931:NAG:H81	2.02	0.74
6:M:999:SEH:H2C1	9:M:1514:GOL:H12	0.72	0.70
1:M:60:ASN:ND2	2:M:961:NAG:H1	2.08	0.68
1:M:165:LYS:HZ1	2:M:931:NAG:H81	1.56	0.68
1:M:462:ASN:HB3	10:M:2635:HOH:O	1.95	0.67
1:M:4:ILE:HD11	1:M:445:LYS:HD2	1.77	0.64
6:M:999:SEH:H2C2	9:M:1514:GOL:H11	1.75	0.64
2:M:971:NAG:H82	10:M:2504:HOH:O	2.06	0.55
1:M:108:LYS:HE3	1:M:110:SER:OG	2.06	0.55
1:M:461:ASP:O	1:M:478:ILE:HD12	2.07	0.55
6:M:999:SEH:C1	10:M:2148:HOH:O	2.58	0.52
1:M:95:ARG:HB2	1:M:455:LEU:HD13	1.92	0.51
1:M:165:LYS:NZ	2:M:931:NAG:C8	2.72	0.50
1:M:365:HIS:HE1	10:M:2531:HOH:O	1.94	0.50
6:M:999:SEH:H2C2	10:M:2148:HOH:O	2.11	0.50
1:M:95:ARG:HA	1:M:136:PHE:O	2.15	0.46
1:M:39:GLN:O	1:M:462:ASN:HB2	2.17	0.45
1:M:362:ALA:HB3	3:M:981:NAG:H82	2.00	0.44
1:M:482:ASN:HD22	2:M:991:NAG:H82	1.83	0.43
1:M:463:TYR:CE1	1:M:468:GLY:HA2	2.54	0.43
1:M:186:ASN:HA	1:M:255:THR:HB	2.02	0.42
1:M:389:ILE:O	1:M:393:MET:HG2	2.20	0.42
1:M:397:LYS:HD2	1:M:449:VAL:HA	2.00	0.41
1:M:36:SER:HB2	1:M:141:HIS:CG	2.55	0.41
1:M:95:ARG:NH1	1:M:409:GLU:HG3	2.35	0.41

Continued on next page...

Continued from previous page...

Atom-1	Atom-2	Interatomic distance (Å)	Clash overlap (Å)
1:M:165:LYS:HZ3	2:M:931:NAG:C8	2.34	0.41
1:M:122:HIS:HE1	1:M:174:GLU:O	2.03	0.41
6:M:999:SEH:H1C2	10:M:2148:HOH:O	2.20	0.40
1:M:328:ASN:CG	1:M:409:GLU:HB2	2.40	0.40
1:M:413:SER:HA	1:M:472:ARG:O	2.22	0.40
1:M:206:CYS:SG	1:M:211:ASP:HB3	2.61	0.40

There are no symmetry-related clashes.

5.3 Torsion angles [i](#)

5.3.1 Protein backbone [i](#)

In the following table, the Percentiles column shows the percent Ramachandran outliers of the chain as a percentile score with respect to all X-ray entries followed by that with respect to entries of similar resolution.

The Analysed column shows the number of residues for which the backbone conformation was analysed, and the total number of residues.

Mol	Chain	Analysed	Favoured	Allowed	Outliers	Percentiles
1	M	497/501 (99%)	480 (97%)	16 (3%)	1 (0%)	52 28

All (1) Ramachandran outliers are listed below:

Mol	Chain	Res	Type
1	M	187	GLN

5.3.2 Protein sidechains [i](#)

In the following table, the Percentiles column shows the percent sidechain outliers of the chain as a percentile score with respect to all X-ray entries followed by that with respect to entries of similar resolution.

The Analysed column shows the number of residues for which the sidechain conformation was analysed, and the total number of residues.

Mol	Chain	Analysed	Rotameric	Outliers	Percentiles
1	M	435/437 (100%)	435 (100%)	0	100 100

There are no protein residues with a non-rotameric sidechain to report.

Some sidechains can be flipped to improve hydrogen bonding and reduce clashes. All (3) such sidechains are listed below:

Mol	Chain	Res	Type
1	M	365	HIS
1	M	398	ASN
1	M	462	ASN

5.3.3 RNA ⓘ

There are no RNA molecules in this entry.

5.4 Non-standard residues in protein, DNA, RNA chains ⓘ

There are no non-standard protein/DNA/RNA residues in this entry.

5.5 Carbohydrates ⓘ

16 carbohydrates are modelled in this entry.

In the following table, the Counts columns list the number of bonds (or angles) for which Mogul statistics could be retrieved, the number of bonds (or angles) that are observed in the model and the number of bonds (or angles) that are defined in the chemical component dictionary. The Link column lists molecule types, if any, to which the group is linked. The Z score for a bond length (or angle) is the number of standard deviations the observed value is removed from the expected value. A bond length (or angle) with $|Z| > 2$ is considered an outlier worth inspection. RMSZ is the root-mean-square of all Z scores of the bond lengths (or angles).

Mol	Type	Chain	Res	Link	Bond lengths			Bond angles		
					Counts	RMSZ	$\# Z > 2$	Counts	RMSZ	$\# Z > 2$
3	NAG	M	921	1,3	14,14,15	0.41	0	15,19,21	0.69	1 (6%)
3	NAG	M	923	3	14,14,15	0.38	0	15,19,21	0.79	1 (6%)
4	NAG	M	941	1,4	14,14,15	0.43	0	15,19,21	0.68	0
4	FUC	M	942	4	10,10,11	0.38	0	14,14,16	0.48	0
4	NAG	M	943	4	14,14,15	0.40	0	15,19,21	0.70	1 (6%)
4	BMA	M	944	4	11,11,12	0.31	0	14,15,17	0.30	0
4	XYP	M	945	4	9,9,10	0.44	0	12,12,14	0.45	0
5	NAG	M	951	1,5	14,14,15	0.40	0	15,19,21	0.69	0
5	FUC	M	952	5	10,10,11	0.38	0	14,14,16	0.46	0
5	NAG	M	953	5	14,14,15	0.39	0	15,19,21	0.77	0
5	BMA	M	954	5	11,11,12	0.35	0	14,15,17	0.47	0
5	XYP	M	955	5	9,9,10	0.43	0	12,12,14	0.53	0

Mol	Type	Chain	Res	Link	Bond lengths			Bond angles		
					Counts	RMSZ	# Z > 2	Counts	RMSZ	# Z > 2
5	MAN	M	956	5	11,11,12	0.32	0	14,15,17	0.59	0
5	MAN	M	957	5	11,11,12	0.34	0	14,15,17	0.55	0
3	NAG	M	981	1,3	14,14,15	0.50	0	15,19,21	0.61	0
3	NAG	M	983	3	14,14,15	0.38	0	15,19,21	0.77	1 (6%)

In the following table, the Chirals column lists the number of chiral outliers, the number of chiral centers analysed, the number of these observed in the model and the number defined in the chemical component dictionary. Similar counts are reported in the Torsion and Rings columns. '-' means no outliers of that kind were identified.

Mol	Type	Chain	Res	Link	Chirals	Torsions	Rings
3	NAG	M	921	1,3	-	0/6/23/26	0/1/1/1
3	NAG	M	923	3	-	0/6/23/26	0/1/1/1
4	NAG	M	941	1,4	-	0/6/23/26	0/1/1/1
4	FUC	M	942	4	-	0/0/17/20	0/1/1/1
4	NAG	M	943	4	-	0/6/23/26	0/1/1/1
4	BMA	M	944	4	-	0/2/19/22	0/1/1/1
4	XYP	M	945	4	-	0/0/14/17	0/1/1/1
5	NAG	M	951	1,5	-	0/6/23/26	0/1/1/1
5	FUC	M	952	5	-	0/0/17/20	0/1/1/1
5	NAG	M	953	5	-	0/6/23/26	0/1/1/1
5	BMA	M	954	5	-	0/2/19/22	0/1/1/1
5	XYP	M	955	5	-	0/0/14/17	0/1/1/1
5	MAN	M	956	5	-	0/2/19/22	0/1/1/1
5	MAN	M	957	5	-	0/2/19/22	0/1/1/1
3	NAG	M	981	1,3	-	0/6/23/26	0/1/1/1
3	NAG	M	983	3	-	0/6/23/26	0/1/1/1

There are no bond length outliers.

All (4) bond angle outliers are listed below:

Mol	Chain	Res	Type	Atoms	Z	Observed(°)	Ideal(°)
3	M	923	NAG	C2-N2-C7	-2.41	119.94	123.04
3	M	983	NAG	C2-N2-C7	-2.37	119.99	123.04
4	M	943	NAG	C2-N2-C7	-2.13	120.31	123.04
3	M	921	NAG	C2-N2-C7	-2.08	120.37	123.04

There are no chirality outliers.

There are no torsion outliers.

There are no ring outliers.

2 monomers are involved in 2 short contacts:

Mol	Chain	Res	Type	Clashes	Symm-Clashes
5	M	954	BMA	1	0
3	M	981	NAG	1	0

5.6 Ligand geometry

Of 15 ligands modelled in this entry, 1 is monoatomic - leaving 14 for Mogul analysis.

In the following table, the Counts columns list the number of bonds (or angles) for which Mogul statistics could be retrieved, the number of bonds (or angles) that are observed in the model and the number of bonds (or angles) that are defined in the chemical component dictionary. The Link column lists molecule types, if any, to which the group is linked. The Z score for a bond length (or angle) is the number of standard deviations the observed value is removed from the expected value. A bond length (or angle) with $|Z| > 2$ is considered an outlier worth inspection. RMSZ is the root-mean-square of all Z scores of the bond lengths (or angles).

Mol	Type	Chain	Res	Link	Bond lengths			Bond angles		
					Counts	RMSZ	# Z > 2	Counts	RMSZ	# Z > 2
8	SO4	M	1503	-	4,4,4	0.18	0	6,6,6	0.08	0
8	SO4	M	1504	-	4,4,4	0.22	0	6,6,6	0.08	0
8	SO4	M	1505	-	4,4,4	0.20	0	6,6,6	0.08	0
8	SO4	M	1506	-	4,4,4	0.20	0	6,6,6	0.08	0
9	GOL	M	1512	-	5,5,5	1.06	0	5,5,5	1.00	0
9	GOL	M	1513	-	5,5,5	2.59	2 (40%)	5,5,5	1.74	2 (40%)
9	GOL	M	1514	6	5,5,5	0.56	0	5,5,5	1.02	1 (20%)
2	NAG	M	901	1	14,14,15	0.40	0	15,19,21	0.73	1 (6%)
2	NAG	M	911	1	14,14,15	0.42	0	15,19,21	0.77	1 (6%)
2	NAG	M	931	1	14,14,15	0.34	0	15,19,21	0.77	1 (6%)
2	NAG	M	961	-	15,15,15	0.29	0	17,21,21	0.55	0
2	NAG	M	971	1	14,14,15	0.39	0	15,19,21	0.75	1 (6%)
2	NAG	M	991	1	14,14,15	0.40	0	15,19,21	0.74	1 (6%)
6	SEH	M	999	9	14,17,17	1.10	1 (7%)	12,22,22	0.63	0

In the following table, the Chirals column lists the number of chiral outliers, the number of chiral centers analysed, the number of these observed in the model and the number defined in the chemical component dictionary. Similar counts are reported in the Torsion and Rings columns. '-' means no outliers of that kind were identified.

Mol	Type	Chain	Res	Link	Chirals	Torsions	Rings
8	SO4	M	1503	-	-	0/0/0/0	0/0/0/0
8	SO4	M	1504	-	-	0/0/0/0	0/0/0/0

Continued on next page...

Continued from previous page...

Mol	Type	Chain	Res	Link	Chirals	Torsions	Rings
8	SO4	M	1505	-	-	0/0/0/0	0/0/0/0
8	SO4	M	1506	-	-	0/0/0/0	0/0/0/0
9	GOL	M	1512	-	-	0/4/4/4	0/0/0/0
9	GOL	M	1513	-	-	0/4/4/4	0/0/0/0
9	GOL	M	1514	6	-	0/4/4/4	0/0/0/0
2	NAG	M	901	1	-	0/6/23/26	0/1/1/1
2	NAG	M	911	1	-	0/6/23/26	0/1/1/1
2	NAG	M	931	1	-	0/6/23/26	0/1/1/1
2	NAG	M	961	-	-	0/6/26/26	0/1/1/1
2	NAG	M	971	1	-	0/6/23/26	0/1/1/1
2	NAG	M	991	1	-	0/6/23/26	0/1/1/1
6	SEH	M	999	9	-	1/5/13/13	0/1/1/1

All (3) bond length outliers are listed below:

Mol	Chain	Res	Type	Atoms	Z	Observed(Å)	Ideal(Å)
6	M	999	SEH	O18-S19	-3.59	1.49	1.65
9	M	1513	GOL	C1-C2	3.64	1.66	1.52
9	M	1513	GOL	O1-C1	3.94	1.59	1.42

All (8) bond angle outliers are listed below:

Mol	Chain	Res	Type	Atoms	Z	Observed(°)	Ideal(°)
2	M	931	NAG	C2-N2-C7	-2.38	119.98	123.04
2	M	971	NAG	C2-N2-C7	-2.28	120.11	123.04
2	M	911	NAG	C2-N2-C7	-2.26	120.13	123.04
2	M	991	NAG	C2-N2-C7	-2.25	120.15	123.04
2	M	901	NAG	C2-N2-C7	-2.16	120.26	123.04
9	M	1514	GOL	C3-C2-C1	-2.12	102.80	111.12
9	M	1513	GOL	O3-C3-C2	2.34	121.54	110.18
9	M	1513	GOL	O2-C2-C1	2.91	122.00	108.65

There are no chirality outliers.

All (1) torsion outliers are listed below:

Mol	Chain	Res	Type	Atoms
6	M	999	SEH	CB-C13-S1-C1

There are no ring outliers.

6 monomers are involved in 25 short contacts:

Mol	Chain	Res	Type	Clashes	Symm-Clashes
9	M	1514	GOL	15	0
2	M	931	NAG	4	0
2	M	961	NAG	1	0
2	M	971	NAG	1	0
2	M	991	NAG	1	0
6	M	999	SEH	18	0

5.7 Other polymers [i](#)

There are no such residues in this entry.

5.8 Polymer linkage issues [i](#)

There are no chain breaks in this entry.

6 Fit of model and data ⓘ

6.1 Protein, DNA and RNA chains ⓘ

In the following table, the column labelled ‘#RSRZ> 2’ contains the number (and percentage) of RSRZ outliers, followed by percent RSRZ outliers for the chain as percentile scores relative to all X-ray entries and entries of similar resolution. The OWAB column contains the minimum, median, 95th percentile and maximum values of the occupancy-weighted average B-factor per residue. The column labelled ‘Q< 0.9’ lists the number of (and percentage) of residues with an average occupancy less than 0.9.

Mol	Chain	Analysed	<RSRZ>	#RSRZ>2		OWAB(Å ²)	Q<0.9
1	M	499/501 (99%)	-0.01	27 (5%)	29 26	6, 11, 28, 56	0

All (27) RSRZ outliers are listed below:

Mol	Chain	Res	Type	RSRZ
1	M	376	ALA	11.1
1	M	375	LYS	7.0
1	M	458	ALA	5.6
1	M	417	ASP	5.5
1	M	3	GLU	5.2
1	M	378	SER	4.2
1	M	4	ILE	3.7
1	M	380	ASP	3.2
1	M	374	ASP	3.2
1	M	481	ASN	3.1
1	M	420	ARG	3.1
1	M	377	ASP	3.1
1	M	457	TRP	3.1
1	M	27	SER	3.0
1	M	18	ASP	3.0
1	M	343	ASN	3.0
1	M	19	ALA	2.8
1	M	421	ASN	2.5
1	M	341	PRO	2.4
1	M	486	ARG	2.2
1	M	305	GLU	2.2
1	M	344	SER	2.2
1	M	346	ASN	2.2
1	M	373	LYS	2.1
1	M	379	THR	2.0
1	M	483	VAL	2.0
1	M	345	THR	2.0

6.2 Non-standard residues in protein, DNA, RNA chains [i](#)

There are no non-standard protein/DNA/RNA residues in this entry.

6.3 Carbohydrates [i](#)

In the following table, the Atoms column lists the number of modelled atoms in the group and the number defined in the chemical component dictionary. LLDF column lists the quality of electron density of the group with respect to its neighbouring residues in protein, DNA or RNA chains. The B-factors column lists the minimum, median, 95th percentile and maximum values of B factors of atoms in the group. The column labelled 'Q< 0.9' lists the number of atoms with occupancy less than 0.9.

Mol	Type	Chain	Res	Atoms	RSCC	RSR	LLDF	B-factors(Å ²)	Q<0.9
3	NAG	M	921	14/15	0.92	0.11	0.44	17,22,27,30	0
3	NAG	M	981	14/15	0.95	0.07	-0.56	10,14,15,18	0
5	MAN	M	956	11/12	0.47	0.28	-	43,49,49,49	0
4	NAG	M	941	14/15	0.90	0.10	-	16,19,23,26	0
5	FUC	M	952	10/11	0.86	0.13	-	25,26,30,31	0
5	NAG	M	951	14/15	0.89	0.11	-	19,22,25,26	0
4	XYP	M	945	9/10	0.50	0.38	-	51,52,53,53	0
5	XYP	M	955	9/10	0.58	0.25	-	48,49,52,52	0
4	BMA	M	944	11/12	0.69	0.34	-	45,48,49,50	0
4	NAG	M	943	14/15	0.84	0.18	-	28,32,39,40	0
3	NAG	M	923	14/15	0.64	0.36	-	37,40,42,43	0
5	MAN	M	957	11/12	0.40	0.41	-	53,55,56,56	0
5	NAG	M	953	14/15	0.83	0.14	-	23,30,33,36	0
3	NAG	M	983	14/15	0.70	0.27	-	22,27,34,35	0
4	FUC	M	942	10/11	0.83	0.19	-	29,33,36,38	0
5	BMA	M	954	11/12	0.76	0.15	-	43,46,48,51	0

6.4 Ligands [i](#)

In the following table, the Atoms column lists the number of modelled atoms in the group and the number defined in the chemical component dictionary. LLDF column lists the quality of electron density of the group with respect to its neighbouring residues in protein, DNA or RNA chains. The B-factors column lists the minimum, median, 95th percentile and maximum values of B factors of atoms in the group. The column labelled 'Q< 0.9' lists the number of atoms with occupancy less than 0.9.

Mol	Type	Chain	Res	Atoms	RSCC	RSR	LLDF	B-factors(Å ²)	Q<0.9
8	SO4	M	1503	5/5	0.97	0.22	17.29	33,36,37,39	0
9	GOL	M	1512	6/6	0.82	0.22	10.29	18,25,30,34	0
9	GOL	M	1513	6/6	0.89	0.22	9.71	20,30,33,40	0

Continued on next page...

Continued from previous page...

Mol	Type	Chain	Res	Atoms	RSCC	RSR	LLDF	B-factors(\AA^2)	Q<0.9
8	SO4	M	1505	5/5	0.80	0.24	8.36	66,66,67,67	0
6	SEH	M	999	17/17	0.88	0.29	6.83	24,27,35,36	17
2	NAG	M	901	14/15	0.76	0.23	1.23	29,33,38,39	0
9	GOL	M	1514	6/6	0.88	0.12	0.03	9,12,14,15	0
8	SO4	M	1506	5/5	0.98	0.06	-	20,21,23,25	0
2	NAG	M	991	14/15	0.41	0.43	-	55,57,59,60	0
2	NAG	M	931	14/15	0.60	0.28	-	38,42,44,46	0
2	NAG	M	971	14/15	0.43	0.60	-	50,55,56,57	0
2	NAG	M	961	15/15	0.43	0.58	-	82,82,83,83	0
7	ZN	M	1502	1/1	0.99	0.05	-	8,8,8,8	1
2	NAG	M	911	14/15	0.87	0.20	-	22,27,30,32	0
8	SO4	M	1504	5/5	0.80	0.21	-	40,43,44,44	0

6.5 Other polymers [i](#)

There are no such residues in this entry.