



# Full wwPDB X-ray Structure Validation Report ⓘ

Jan 31, 2016 – 11:14 PM GMT

PDB ID : 1WMS  
Title : High resolution crystal structure of human Rab9 GTPase: a novel antiviral drug target  
Authors : Chen, L.; DiGiammarino, E.; Zhou, X.E.; Wang, Y.; Toh, D.; Hodge, T.W.; Meehan, E.J.  
Deposited on : 2004-07-16  
Resolution : 1.25 Å(reported)

This is a Full wwPDB X-ray Structure Validation Report for a publicly released PDB entry.  
We welcome your comments at [validation@mail.wwpdb.org](mailto:validation@mail.wwpdb.org)  
A user guide is available at  
<http://wwpdb.org/validation/2016/XrayValidationReportHelp>  
with specific help available everywhere you see the ⓘ symbol.

---

The following versions of software and data (see [references ⓘ](#)) were used in the production of this report:

MolProbity : 4.02b-467  
Mogul : 1.7 (RC4), CSD as536be (2015)  
Xtriage (Phenix) : 1.9-1692  
EDS : rb-20026688  
Percentile statistics : 20151230.v01 (using entries in the PDB archive December 30th 2015)  
Refmac : 5.8.0135  
CCP4 : 6.5.0  
Ideal geometry (proteins) : Engh & Huber (2001)  
Ideal geometry (DNA, RNA) : Parkinson et al. (1996)  
Validation Pipeline (wwPDB-VP) : trunk26865

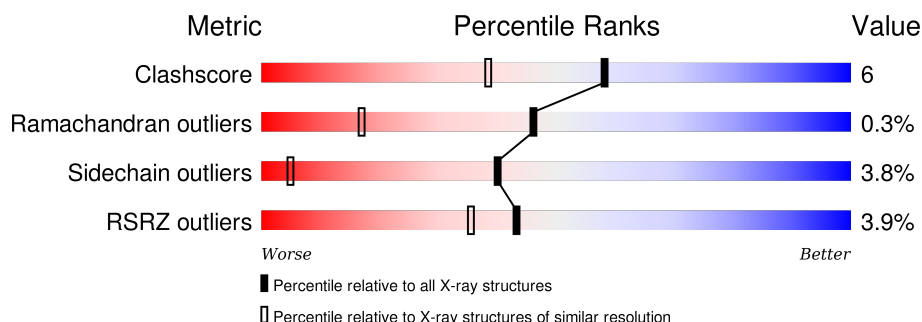
# 1 Overall quality at a glance

The following experimental techniques were used to determine the structure:

## *X-RAY DIFFRACTION*

The reported resolution of this entry is 1.25 Å.

Percentile scores (ranging between 0-100) for global validation metrics of the entry are shown in the following graphic. The table shows the number of entries on which the scores are based.



Metric	Whole archive (#Entries)	Similar resolution (#Entries, resolution range(Å))
Clashscore	102246	1530 (1.30-1.22)
Ramachandran outliers	100387	1467 (1.30-1.22)
Sidechain outliers	100360	1465 (1.30-1.22)
RSRZ outliers	91569	1442 (1.30-1.22)

The table below summarises the geometric issues observed across the polymeric chains and their fit to the electron density. The red, orange, yellow and green segments on the lower bar indicate the fraction of residues that contain outliers for  $\geq 3$ , 2, 1 and 0 types of geometric quality criteria. A grey segment represents the fraction of residues that are not modelled. The numeric value for each fraction is indicated below the corresponding segment, with a dot representing fractions  $\leq 5\%$ . The upper red bar (where present) indicates the fraction of residues that have poor fit to the electron density. The numeric value is given above the bar.

Mol	Chain	Length	Quality of chain
1	A	177	 4% 79% 12% 5% • •
1	B	177	 3% 79% 8% • • 8%

## 2 Entry composition [i](#)

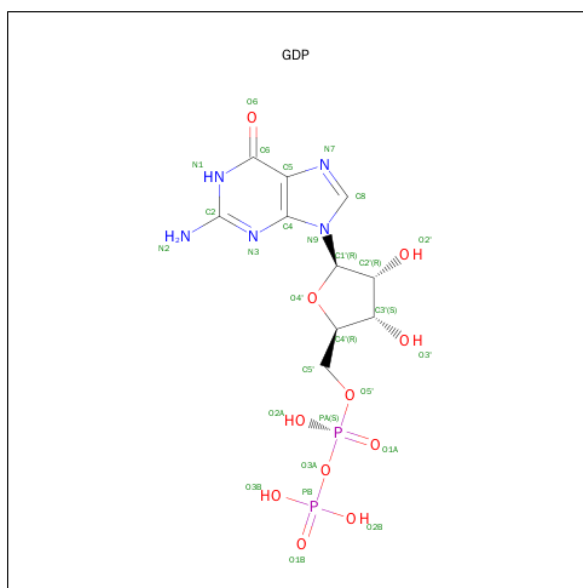
There are 3 unique types of molecules in this entry. The entry contains 3226 atoms, of which 0 are hydrogens and 0 are deuteriums.

In the tables below, the ZeroOcc column contains the number of atoms modelled with zero occupancy, the AltConf column contains the number of residues with at least one atom in alternate conformation and the Trace column contains the number of residues modelled with at most 2 atoms.

- Molecule 1 is a protein called Ras-related protein Rab-9A.

Mol	Chain	Residues	Atoms					ZeroOcc	AltConf	Trace
1	A	170	Total	C	N	O	S	0	0	0
			1356	860	226	265	5			
1	B	163	Total	C	N	O	S	0	0	0
			1306	828	217	256	5			

- Molecule 2 is GUANOSINE-5'-DIPHOSPHATE (three-letter code: GDP) (formula:  $C_{10}H_{15}N_5O_{11}P_2$ ).

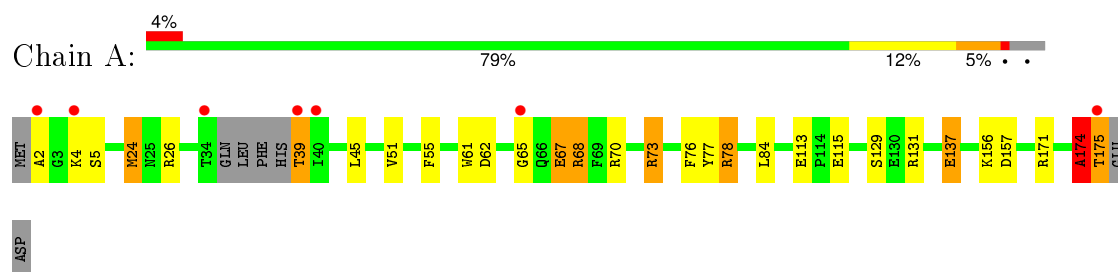


Mol	Chain	Residues	Atoms		ZeroOcc	AltConf
3	A	245	Total 245	O 245	0	0
3	B	263	Total 263	O 263	0	0

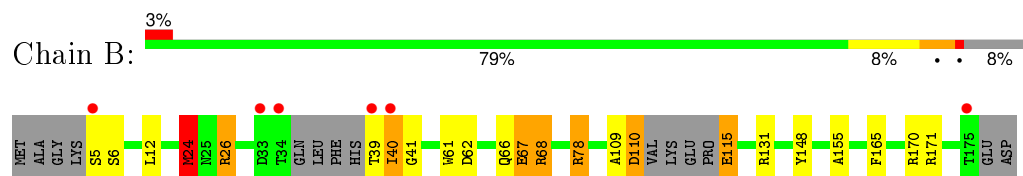
### 3 Residue-property plots [i](#)

These plots are drawn for all protein, RNA and DNA chains in the entry. The first graphic for a chain summarises the proportions of errors displayed in the second graphic. The second graphic shows the sequence view annotated by issues in geometry and electron density. Residues are color-coded according to the number of geometric quality criteria for which they contain at least one outlier: green = 0, yellow = 1, orange = 2 and red = 3 or more. A red dot above a residue indicates a poor fit to the electron density ( $RSRZ > 2$ ). Stretches of 2 or more consecutive residues without any outlier are shown as a green connector. Residues present in the sample, but not in the model, are shown in grey.

- Molecule 1: Ras-related protein Rab-9A



- Molecule 1: Ras-related protein Rab-9A



## 4 Data and refinement statistics

Property	Value	Source
Space group	P 1	Depositor
Cell constants a, b, c, $\alpha$ , $\beta$ , $\gamma$	38.40 Å   45.62 Å   51.22 Å 99.75°   107.17°   101.84°	Depositor
Resolution (Å)	10.00 – 1.25 36.79 – 1.25	Depositor EDS
% Data completeness (in resolution range)	84.7 (10.00-1.25) 79.5 (36.79-1.25)	Depositor EDS
$R_{merge}$	0.06	Depositor
$R_{sym}$	0.06	Depositor
$\langle I/\sigma(I) \rangle$ <sup>1</sup>	1.91 (at 1.25 Å)	Xtriage
Refinement program	SHELXL	Depositor
R, $R_{free}$	0.139   ,   0.196 0.147   ,   (Not available)	Depositor DCC
$R_{free}$ test set	No test flags present.	DCC
Wilson B-factor (Å <sup>2</sup> )	10.1	Xtriage
Anisotropy	0.413	Xtriage
Bulk solvent $k_{sol}$ (e/Å <sup>3</sup> ), $B_{sol}$ (Å <sup>2</sup> )	0.35 , 70.9	EDS
Estimated twinning fraction	No twinning to report.	Xtriage
L-test for twinning <sup>2</sup>	$\langle  L  \rangle = 0.49$ , $\langle L^2 \rangle = 0.32$	Xtriage
Outliers	0 of 73993 reflections	Xtriage
$F_o, F_c$ correlation	0.97	EDS
Total number of atoms	3226	wwPDB-VP
Average B, all atoms (Å <sup>2</sup> )	20.0	wwPDB-VP

Xtriage's analysis on translational NCS is as follows: *The largest off-origin peak in the Patterson function is 8.92% of the height of the origin peak. No significant pseudotranslation is detected.*

<sup>1</sup>Intensities estimated from amplitudes.

<sup>2</sup>Theoretical values of  $\langle |L| \rangle$ ,  $\langle L^2 \rangle$  for acentric reflections are 0.5, 0.375 respectively for untwinned datasets, and 0.333, 0.2 for perfectly twinned datasets.

## 5 Model quality

### 5.1 Standard geometry

Bond lengths and bond angles in the following residue types are not validated in this section: GDP

The Z score for a bond length (or angle) is the number of standard deviations the observed value is removed from the expected value. A bond length (or angle) with  $|Z| > 5$  is considered an outlier worth inspection. RMSZ is the root-mean-square of all Z scores of the bond lengths (or angles).

Mol	Chain	Bond lengths		Bond angles	
		RMSZ	# Z  >5	RMSZ	# Z  >5
1	A	0.70	0/1384	1.50	22/1869 (1.2%)
1	B	0.69	0/1332	1.49	19/1798 (1.1%)
All	All	0.69	0/2716	1.50	41/3667 (1.1%)

Chiral center outliers are detected by calculating the chiral volume of a chiral center and verifying if the center is modelled as a planar moiety or with the opposite hand. A planarity outlier is detected by checking planarity of atoms in a peptide group, atoms in a mainchain group or atoms of a sidechain that are expected to be planar.

Mol	Chain	#Chirality outliers	#Planarity outliers
1	A	0	1

There are no bond length outliers.

All (41) bond angle outliers are listed below:

Mol	Chain	Res	Type	Atoms	Z	Observed( $^{\circ}$ )	Ideal( $^{\circ}$ )
1	A	26	ARG	CD-NE-CZ	13.80	142.92	123.60
1	B	61	TRP	CD1-NE1-CE2	13.49	121.14	109.00
1	A	61	TRP	CD1-NE1-CE2	13.23	120.91	109.00
1	B	24	MET	CA-CB-CG	12.62	134.75	113.30
1	B	5	SER	C-N-CA	11.48	150.41	121.70
1	A	26	ARG	NE-CZ-NH2	11.00	125.80	120.30
1	B	26	ARG	NE-CZ-NH2	-10.22	115.19	120.30
1	B	131	ARG	NE-CZ-NH1	10.04	125.32	120.30
1	A	24	MET	CA-CB-CG	9.53	129.50	113.30
1	A	77	TYR	CB-CG-CD1	8.80	126.28	121.00
1	A	73	ARG	NE-CZ-NH1	8.69	124.65	120.30
1	B	171	ARG	CG-CD-NE	8.69	130.05	111.80
1	B	61	TRP	CG-CD1-NE1	-8.09	102.01	110.10
1	A	62	ASP	CB-CG-OD1	-7.85	111.24	118.30

*Continued on next page...*

*Continued from previous page...*

Mol	Chain	Res	Type	Atoms	Z	Observed(°)	Ideal(°)
1	A	61	TRP	NE1-CE2-CD2	-7.68	99.62	107.30
1	B	61	TRP	NE1-CE2-CD2	-7.67	99.63	107.30
1	B	171	ARG	NE-CZ-NH2	-7.56	116.52	120.30
1	A	61	TRP	CG-CD1-NE1	-7.20	102.91	110.10
1	A	26	ARG	CG-CD-NE	6.88	126.26	111.80
1	B	171	ARG	NE-CZ-NH1	6.87	123.73	120.30
1	A	68	ARG	NE-CZ-NH1	-6.74	116.93	120.30
1	B	109	ALA	C-N-CA	-6.70	104.95	121.70
1	A	171	ARG	NE-CZ-NH2	-6.47	117.06	120.30
1	A	4	LYS	C-N-CA	6.33	137.51	121.70
1	B	148	TYR	CB-CG-CD2	-6.29	117.23	121.00
1	A	131	ARG	NE-CZ-NH1	6.26	123.43	120.30
1	B	68	ARG	NE-CZ-NH1	-5.97	117.32	120.30
1	B	171	ARG	CD-NE-CZ	5.94	131.91	123.60
1	A	156	LYS	O-C-N	-5.90	113.26	122.70
1	A	137	GLU	CA-CB-CG	5.84	126.25	113.40
1	B	115	GLU	OE1-CD-OE2	5.80	130.26	123.30
1	A	78	ARG	CD-NE-CZ	5.75	131.65	123.60
1	A	174	ALA	O-C-N	5.67	131.78	122.70
1	A	62	ASP	CB-CA-C	-5.66	99.09	110.40
1	B	170	ARG	CD-NE-CZ	5.31	131.04	123.60
1	B	165	PHE	CB-CG-CD1	-5.27	117.11	120.80
1	A	174	ALA	CA-C-O	-5.18	109.22	120.10
1	A	76	PHE	CB-CG-CD1	-5.09	117.24	120.80
1	A	61	TRP	CE3-CZ3-CH2	5.08	126.79	121.20
1	B	78	ARG	NE-CZ-NH2	-5.08	117.76	120.30
1	B	110	ASP	CA-CB-CG	5.08	124.57	113.40

There are no chirality outliers.

All (1) planarity outliers are listed below:

Mol	Chain	Res	Type	Group
1	A	174	ALA	Peptide

## 5.2 Too-close contacts ⓘ

In the following table, the Non-H and H(model) columns list the number of non-hydrogen atoms and hydrogen atoms in the chain respectively. The H(added) column lists the number of hydrogen atoms added and optimized by MolProbity. The Clashes column lists the number of clashes within the asymmetric unit, whereas Symm-Clashes lists symmetry related clashes.



Mol	Chain	Non-H	H(model)	H(added)	Clashes	Symm-Clashes
1	A	1356	0	1300	18	0
1	B	1306	0	1242	15	0
2	A	28	0	12	0	0
2	B	28	0	12	0	0
3	A	245	0	0	10	0
3	B	263	0	0	9	0
All	All	3226	0	2566	31	0

The all-atom clashscore is defined as the number of clashes found per 1000 atoms (including hydrogen atoms). The all-atom clashscore for this structure is 6.

All (31) close contacts within the same asymmetric unit are listed below, sorted by their clash magnitude.

Atom-1	Atom-2	Interatomic distance (Å)	Clash overlap (Å)
1:A:39:THR:HB	3:A:1121:HOH:O	1.88	0.74
1:A:175:THR:HB	3:A:1093:HOH:O	1.87	0.73
1:A:174:ALA:HB2	3:A:1118:HOH:O	1.87	0.72
1:B:26:ARG:HD3	1:B:155:ALA:O	1.95	0.67
1:B:68:ARG:HA	3:B:1112:HOH:O	1.95	0.67
1:B:78:ARG:HG3	3:B:1037:HOH:O	1.99	0.61
1:A:67:GLU:HG3	1:A:68:ARG:N	2.14	0.58
1:A:39:THR:HG21	3:A:1107:HOH:O	2.04	0.57
1:A:70:ARG:O	1:A:73:ARG:HG2	2.05	0.57
1:A:157:ASP:HB3	3:A:1183:HOH:O	2.06	0.56
1:B:110:ASP:HA	3:B:1153:HOH:O	2.11	0.50
1:A:45:LEU:HD21	1:B:40:ILE:HG12	1.94	0.50
1:A:113:GLU:OE1	1:A:115:GLU:OE1	2.29	0.50
1:B:39:THR:HG21	3:B:1184:HOH:O	2.11	0.49
1:A:51:VAL:HB	3:A:1200:HOH:O	2.13	0.48
1:B:62:ASP:HB3	3:B:1184:HOH:O	2.15	0.47
1:B:12:LEU:HD12	1:B:24:MET:CE	2.45	0.47
1:B:40:ILE:HB	3:B:1248:HOH:O	2.15	0.46
1:A:5:SER:HA	1:A:55:PHE:O	2.15	0.46
1:B:66:GLN:HB2	3:B:1027:HOH:O	2.14	0.46
1:A:24:MET:HB2	1:A:24:MET:HE2	1.70	0.45
1:A:2:ALA:N	3:A:1060:HOH:O	2.48	0.45
1:B:67:GLU:HA	3:B:1209:HOH:O	2.16	0.45
3:A:1104:HOH:O	1:B:40:ILE:HD13	2.17	0.44
1:B:78:ARG:NH2	1:B:110:ASP:OD2	2.50	0.43
1:A:45:LEU:HD23	1:B:41:GLY:HA3	2.00	0.43
1:A:115:GLU:H	1:A:115:GLU:CD	2.22	0.42
1:A:39:THR:HB	3:A:1174:HOH:O	2.19	0.41

*Continued on next page...*

*Continued from previous page...*

Atom-1	Atom-2	Interatomic distance (Å)	Clash overlap (Å)
1:A:78:ARG:NH1	3:A:1173:HOH:O	2.50	0.41
1:A:24:MET:HG2	1:A:45:LEU:HD12	2.02	0.41
1:B:39:THR:HG21	3:B:1188:HOH:O	2.19	0.40

There are no symmetry-related clashes.

## 5.3 Torsion angles [i](#)

### 5.3.1 Protein backbone [i](#)

In the following table, the Percentiles column shows the percent Ramachandran outliers of the chain as a percentile score with respect to all X-ray entries followed by that with respect to entries of similar resolution.

The Analysed column shows the number of residues for which the backbone conformation was analysed, and the total number of residues.

Mol	Chain	Analysed	Favoured	Allowed	Outliers	Percentiles	
1	A	166/177 (94%)	161 (97%)	4 (2%)	1 (1%)	30	5
1	B	157/177 (89%)	152 (97%)	5 (3%)	0	100	100
All	All	323/354 (91%)	313 (97%)	9 (3%)	1 (0%)	46	17

All (1) Ramachandran outliers are listed below:

Mol	Chain	Res	Type
1	A	65	GLY

### 5.3.2 Protein sidechains [i](#)

In the following table, the Percentiles column shows the percent sidechain outliers of the chain as a percentile score with respect to all X-ray entries followed by that with respect to entries of similar resolution.

The Analysed column shows the number of residues for which the sidechain conformation was analysed, and the total number of residues.

Mol	Chain	Analysed	Rotameric	Outliers	Percentiles	
1	A	147/154 (96%)	141 (96%)	6 (4%)	37	4
1	B	142/154 (92%)	137 (96%)	5 (4%)	43	6

*Continued on next page...*

*Continued from previous page...*

Mol	Chain	Analysed	Rotameric	Outliers	Percentiles
All	All	289/308 (94%)	278 (96%)	11 (4%)	40 5

All (11) residues with a non-rotameric sidechain are listed below:

Mol	Chain	Res	Type
1	A	39	THR
1	A	67	GLU
1	A	84	LEU
1	A	129	SER
1	A	137	GLU
1	A	175	THR
1	B	6	SER
1	B	24	MET
1	B	40	ILE
1	B	67	GLU
1	B	115	GLU

Some sidechains can be flipped to improve hydrogen bonding and reduce clashes. All (6) such sidechains are listed below:

Mol	Chain	Res	Type
1	A	59	GLN
1	A	66	GLN
1	A	97	ASN
1	A	145	ASN
1	B	59	GLN
1	B	97	ASN

### 5.3.3 RNA ⓘ

There are no RNA molecules in this entry.

## 5.4 Non-standard residues in protein, DNA, RNA chains ⓘ

There are no non-standard protein/DNA/RNA residues in this entry.

## 5.5 Carbohydrates ⓘ

There are no carbohydrates in this entry.

## 5.6 Ligand geometry

2 ligands are modelled in this entry.

In the following table, the Counts columns list the number of bonds (or angles) for which Mogul statistics could be retrieved, the number of bonds (or angles) that are observed in the model and the number of bonds (or angles) that are defined in the chemical component dictionary. The Link column lists molecule types, if any, to which the group is linked. The Z score for a bond length (or angle) is the number of standard deviations the observed value is removed from the expected value. A bond length (or angle) with  $|Z| > 2$  is considered an outlier worth inspection. RMSZ is the root-mean-square of all Z scores of the bond lengths (or angles).

Mol	Type	Chain	Res	Link	Bond lengths			Bond angles		
					Counts	RMSZ	$\# Z  > 2$	Counts	RMSZ	$\# Z  > 2$
2	GDP	A	1001	-	23,30,30	1.96	6 (26%)	30,47,47	2.12	5 (16%)
2	GDP	B	1002	-	23,30,30	2.24	9 (39%)	30,47,47	1.94	7 (23%)

In the following table, the Chirals column lists the number of chiral outliers, the number of chiral centers analysed, the number of these observed in the model and the number defined in the chemical component dictionary. Similar counts are reported in the Torsion and Rings columns. '-' means no outliers of that kind were identified.

Mol	Type	Chain	Res	Link	Chirals	Torsions	Rings
2	GDP	A	1001	-	-	0/12/32/32	0/3/3/3
2	GDP	B	1002	-	-	0/12/32/32	0/3/3/3

All (15) bond length outliers are listed below:

Mol	Chain	Res	Type	Atoms	Z	Observed(Å)	Ideal(Å)
2	A	1001	GDP	C4-N3	-5.60	1.27	1.35
2	B	1002	GDP	PB-O3B	-2.58	1.45	1.54
2	B	1002	GDP	C2-N1	2.17	1.39	1.35
2	A	1001	GDP	C8-N7	2.29	1.39	1.34
2	A	1001	GDP	C5-C4	2.57	1.46	1.40
2	A	1001	GDP	O4'-C4'	2.57	1.50	1.45
2	B	1002	GDP	C2'-C3'	2.70	1.60	1.53
2	B	1002	GDP	C2-N2	2.76	1.39	1.34
2	A	1001	GDP	O3'-C3'	2.93	1.50	1.43
2	B	1002	GDP	O5'-C5'	3.03	1.57	1.44
2	B	1002	GDP	O4'-C1'	3.50	1.45	1.41
2	A	1001	GDP	O6-C6	3.74	1.33	1.24
2	B	1002	GDP	C5-C4	3.75	1.48	1.40
2	B	1002	GDP	O3'-C3'	4.06	1.52	1.43
2	B	1002	GDP	C8-N7	4.49	1.43	1.34

All (12) bond angle outliers are listed below:

Mol	Chain	Res	Type	Atoms	Z	Observed( $^{\circ}$ )	Ideal( $^{\circ}$ )
2	A	1001	GDP	C6-C5-C4	-7.64	111.76	120.90
2	B	1002	GDP	C5-C6-N1	-5.99	115.41	123.59
2	A	1001	GDP	N2-C2-N1	-3.72	111.04	117.20
2	B	1002	GDP	O3'-C3'-C4'	-2.77	102.75	111.05
2	A	1001	GDP	C5-C6-N1	-2.67	119.93	123.59
2	B	1002	GDP	C1'-N9-C4	-2.29	123.49	126.94
2	A	1001	GDP	O3'-C3'-C4'	-2.25	104.29	111.05
2	B	1002	GDP	C6-C5-C4	-2.02	118.49	120.90
2	B	1002	GDP	N2-C2-N3	-2.01	113.95	117.80
2	B	1002	GDP	O3B-PB-O2B	2.35	116.31	107.38
2	A	1001	GDP	C4-C5-N7	4.44	113.57	109.48
2	B	1002	GDP	C6-N1-C2	5.15	123.08	115.94

There are no chirality outliers.

There are no torsion outliers.

There are no ring outliers.

No monomer is involved in short contacts.

## 5.7 Other polymers [i](#)

There are no such residues in this entry.

## 5.8 Polymer linkage issues [i](#)

There are no chain breaks in this entry.

## 6 Fit of model and data [i](#)

### 6.1 Protein, DNA and RNA chains [i](#)

In the following table, the column labelled ‘#RSRZ> 2’ contains the number (and percentage) of RSRZ outliers, followed by percent RSRZ outliers for the chain as percentile scores relative to all X-ray entries and entries of similar resolution. The OWAB column contains the minimum, median, 95<sup>th</sup> percentile and maximum values of the occupancy-weighted average B-factor per residue. The column labelled ‘Q< 0.9’ lists the number of (and percentage) of residues with an average occupancy less than 0.9.

Mol	Chain	Analysed	<RSRZ>	#RSRZ>2	OWAB(Å <sup>2</sup> )	Q<0.9
1	A	170/177 (96%)	0.15	7 (4%) 41 33	8, 14, 40, 56	0
1	B	163/177 (92%)	0.15	6 (3%) 45 37	9, 14, 38, 72	0
All	All	333/354 (94%)	0.15	13 (3%) 43 35	8, 14, 40, 72	0

All (13) RSRZ outliers are listed below:

Mol	Chain	Res	Type	RSRZ
1	B	34	THR	6.4
1	A	175	THR	5.4
1	B	5	SER	4.9
1	B	175	THR	4.6
1	B	39	THR	4.1
1	A	2	ALA	3.5
1	A	39	THR	3.5
1	A	65	GLY	3.4
1	A	40	ILE	2.7
1	A	34	THR	2.5
1	B	33	ASP	2.5
1	A	4	LYS	2.2
1	B	40	ILE	2.2

### 6.2 Non-standard residues in protein, DNA, RNA chains [i](#)

There are no non-standard protein/DNA/RNA residues in this entry.

### 6.3 Carbohydrates [i](#)

There are no carbohydrates in this entry.

## 6.4 Ligands [i](#)

In the following table, the Atoms column lists the number of modelled atoms in the group and the number defined in the chemical component dictionary. LLDF column lists the quality of electron density of the group with respect to its neighbouring residues in protein, DNA or RNA chains. The B-factors column lists the minimum, median, 95<sup>th</sup> percentile and maximum values of B factors of atoms in the group. The column labelled 'Q< 0.9' lists the number of atoms with occupancy less than 0.9.

Mol	Type	Chain	Res	Atoms	RSCC	RSR	LLDF	B-factors( $\text{\AA}^2$ )	Q<0.9
2	GDP	B	1002	28/28	0.98	0.06	-0.52	10,13,17,21	0
2	GDP	A	1001	28/28	0.99	0.06	-0.76	8,10,12,14	0

## 6.5 Other polymers [i](#)

There are no such residues in this entry.