



Full wwPDB X-ray Structure Validation Report ⓘ

Feb 1, 2016 – 10:09 PM GMT

PDB ID : 4WWP
Title : Crystal structure of human PI3K-gamma in complex with pyridinylquinoline inhibitor N-{(1S)-1-[8-chloro-2-(2-methylpyridin-3-yl)quinolin-3-yl]ethyl}-9H-purin-6-amine
Authors : Whittington, D.A.; Tang, J.; Yakowec, P.
Deposited on : 2014-11-11
Resolution : 2.40 Å(reported)

This is a Full wwPDB X-ray Structure Validation Report for a publicly released PDB entry.
We welcome your comments at validation@mail.wwpdb.org
A user guide is available at
<http://wwpdb.org/validation/2016/XrayValidationReportHelp>
with specific help available everywhere you see the ⓘ symbol.

The following versions of software and data (see [references ⓘ](#)) were used in the production of this report:

MolProbity : 4.02b-467
Mogul : 1.7 (RC4), CSD as536be (2015)
Xtriage (Phenix) : 1.9-1692
EDS : rb-20026688
Percentile statistics : 20151230.v01 (using entries in the PDB archive December 30th 2015)
Refmac : 5.8.0135
CCP4 : 6.5.0
Ideal geometry (proteins) : Engh & Huber (2001)
Ideal geometry (DNA, RNA) : Parkinson et al. (1996)
Validation Pipeline (wwPDB-VP) : trunk26865

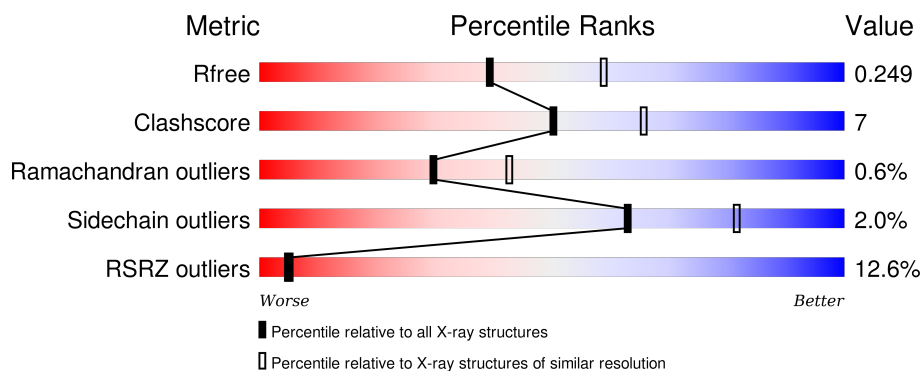
1 Overall quality at a glance

The following experimental techniques were used to determine the structure:

X-RAY DIFFRACTION

The reported resolution of this entry is 2.40 Å.

Percentile scores (ranging between 0-100) for global validation metrics of the entry are shown in the following graphic. The table shows the number of entries on which the scores are based.



Metric	Whole archive (#Entries)	Similar resolution (#Entries, resolution range(Å))
R_{free}	91344	2919 (2.40-2.40)
Clashscore	102246	3407 (2.40-2.40)
Ramachandran outliers	100387	3351 (2.40-2.40)
Sidechain outliers	100360	3352 (2.40-2.40)
RSRZ outliers	91569	2928 (2.40-2.40)

The table below summarises the geometric issues observed across the polymeric chains and their fit to the electron density. The red, orange, yellow and green segments on the lower bar indicate the fraction of residues that contain outliers for ≥ 3 , 2, 1 and 0 types of geometric quality criteria. A grey segment represents the fraction of residues that are not modelled. The numeric value for each fraction is indicated below the corresponding segment, with a dot representing fractions $\leq 5\%$. The upper red bar (where present) indicates the fraction of residues that have poor fit to the electron density. The numeric value is given above the bar.

Mol	Chain	Length	Quality of chain
1	A	959	

The following table lists non-polymeric compounds, carbohydrate monomers and non-standard residues in protein, DNA, RNA chains that are outliers for geometric or electron-density-fit criteria:

Mol	Type	Chain	Res	Chirality	Geometry	Clashes	Electron density
4	GOL	A	1205	-	-	-	X

2 Entry composition [i](#)

There are 5 unique types of molecules in this entry. The entry contains 6793 atoms, of which 0 are hydrogens and 0 are deuteriums.

In the tables below, the ZeroOcc column contains the number of atoms modelled with zero occupancy, the AltConf column contains the number of residues with at least one atom in alternate conformation and the Trace column contains the number of residues modelled with at most 2 atoms.

- Molecule 1 is a protein called Phosphatidylinositol 4,5-bisphosphate 3-kinase catalytic subunit gamma isoform.

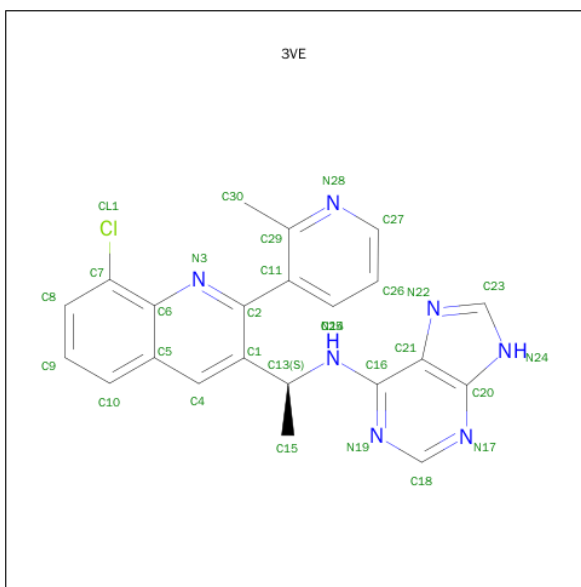
Mol	Chain	Residues	Atoms					ZeroOcc	AltConf	Trace
1	A	820	Total	C	N	O	S	0	0	0
			6649	4272	1135	1208	34			

- Molecule 2 is SULFATE ION (three-letter code: SO4) (formula: O₄S).



Mol	Chain	Residues	Atoms			ZeroOcc	AltConf
2	A	1	Total	O	S	0	0
			5	4	1		
2	A	1	Total	O	S	0	0
			5	4	1		
2	A	1	Total	O	S	0	0
			5	4	1		

- Molecule 3 is N-((1S)-1-[8-chloro-2-(2-methylpyridin-3-yl)quinolin-3-yl]ethyl)-9H-purin-6-amine (three-letter code: 3VE) (formula: C₂₂H₁₈ClN₇).



Mol	Chain	Residues	Atoms				ZeroOcc	AltConf
3	A	1	Total	C	Cl	N	0	0
			30	22	1	7		

- Molecule 4 is GLYCEROL (three-letter code: GOL) (formula: $C_3H_8O_3$).



Mol	Chain	Residues	Atoms			ZeroOcc	AltConf
4	A	1	Total	C	O	0	0
			6	3	3		

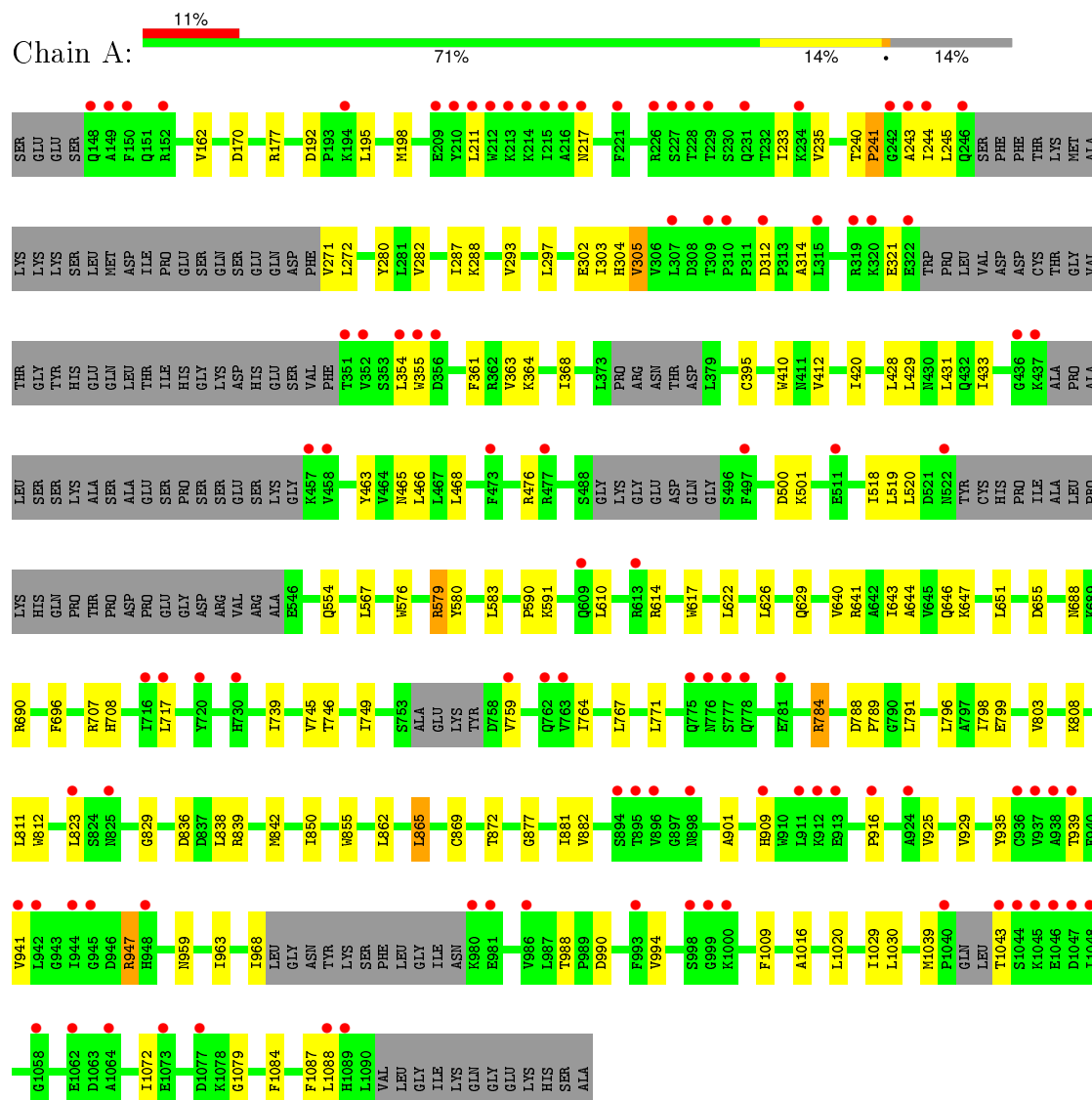
- Molecule 5 is water.

Mol	Chain	Residues	Atoms		ZeroOcc	AltConf
5	A	93	Total	O	0	0
			93	93		

3 Residue-property plots

These plots are drawn for all protein, RNA and DNA chains in the entry. The first graphic for a chain summarises the proportions of errors displayed in the second graphic. The second graphic shows the sequence view annotated by issues in geometry and electron density. Residues are color-coded according to the number of geometric quality criteria for which they contain at least one outlier: green = 0, yellow = 1, orange = 2 and red = 3 or more. A red dot above a residue indicates a poor fit to the electron density ($\text{RSRZ} > 2$). Stretches of 2 or more consecutive residues without any outlier are shown as a green connector. Residues present in the sample, but not in the model, are shown in grey.

- Molecule 1: Phosphatidylinositol 4,5-bisphosphate 3-kinase catalytic subunit gamma isoform



4 Data and refinement statistics

Property	Value	Source
Space group	C 1 2 1	Depositor
Cell constants a, b, c, α , β , γ	143.01Å 67.63Å 105.98Å 90.00° 95.27° 90.00°	Depositor
Resolution (Å)	30.00 – 2.40 28.47 – 2.40	Depositor EDS
% Data completeness (in resolution range)	98.5 (30.00-2.40) 98.5 (28.47-2.40)	Depositor EDS
R_{merge}	0.06	Depositor
R_{sym}	(Not available)	Depositor
$\langle I/\sigma(I) \rangle$ ¹	1.97 (at 2.39Å)	Xtriage
Refinement program	REFMAC	Depositor
R, R_{free}	0.211 , 0.252 0.208 , 0.249	Depositor DCC
R_{free} test set	1954 reflections (5.26%)	DCC
Wilson B-factor (Å ²)	64.4	Xtriage
Anisotropy	0.057	Xtriage
Bulk solvent k_{sol} (e/Å ³), B_{sol} (Å ²)	0.35 , 57.0	EDS
Estimated twinning fraction	No twinning to report.	Xtriage
L-test for twinning ²	$\langle L \rangle = 0.49$, $\langle L^2 \rangle = 0.32$	Xtriage
Outliers	0 of 39073 reflections	Xtriage
F_o, F_c correlation	0.95	EDS
Total number of atoms	6793	wwPDB-VP
Average B, all atoms (Å ²)	82.0	wwPDB-VP

Xtriage's analysis on translational NCS is as follows: *The largest off-origin peak in the Patterson function is 4.54% of the height of the origin peak. No significant pseudotranslation is detected.*

¹Intensities estimated from amplitudes.

²Theoretical values of $\langle |L| \rangle$, $\langle L^2 \rangle$ for acentric reflections are 0.5, 0.375 respectively for untwinned datasets, and 0.333, 0.2 for perfectly twinned datasets.

5 Model quality

5.1 Standard geometry

Bond lengths and bond angles in the following residue types are not validated in this section: GOL, 3VE, SO4

The Z score for a bond length (or angle) is the number of standard deviations the observed value is removed from the expected value. A bond length (or angle) with $|Z| > 5$ is considered an outlier worth inspection. RMSZ is the root-mean-square of all Z scores of the bond lengths (or angles).

Mol	Chain	Bond lengths		Bond angles	
		RMSZ	$\# Z > 5$	RMSZ	$\# Z > 5$
1	A	0.53	1/6788 (0.0%)	0.60	1/9179 (0.0%)

Chiral center outliers are detected by calculating the chiral volume of a chiral center and verifying if the center is modelled as a planar moiety or with the opposite hand. A planarity outlier is detected by checking planarity of atoms in a peptide group, atoms in a mainchain group or atoms of a sidechain that are expected to be planar.

Mol	Chain	#Chirality outliers	#Planarity outliers
1	A	0	1

All (1) bond length outliers are listed below:

Mol	Chain	Res	Type	Atoms	Z	Observed(Å)	Ideal(Å)
1	A	355	TRP	CD2-CE2	5.20	1.47	1.41

All (1) bond angle outliers are listed below:

Mol	Chain	Res	Type	Atoms	Z	Observed(°)	Ideal(°)
1	A	947	ARG	NE-CZ-NH2	-7.19	116.70	120.30

There are no chirality outliers.

All (1) planarity outliers are listed below:

Mol	Chain	Res	Type	Group
1	A	901	ALA	Peptide

5.2 Too-close contacts ⓘ

In the following table, the Non-H and H(model) columns list the number of non-hydrogen atoms and hydrogen atoms in the chain respectively. The H(added) column lists the number of hydrogen atoms added and optimized by MolProbity. The Clashes column lists the number of clashes within the asymmetric unit, whereas Symm-Clashes lists symmetry related clashes.

Mol	Chain	Non-H	H(model)	H(added)	Clashes	Symm-Clashes
1	A	6649	0	6710	94	0
2	A	15	0	0	0	0
3	A	30	0	18	2	0
4	A	6	0	8	1	0
5	A	93	0	0	2	0
All	All	6793	0	6736	94	0

The all-atom clashscore is defined as the number of clashes found per 1000 atoms (including hydrogen atoms). The all-atom clashscore for this structure is 7.

All (94) close contacts within the same asymmetric unit are listed below, sorted by their clash magnitude.

Atom-1	Atom-2	Interatomic distance (Å)	Clash overlap (Å)
1:A:947:ARG:NH2	1:A:963:ILE:O	2.11	0.83
1:A:767:LEU:HD22	1:A:803:VAL:HG23	1.62	0.80
1:A:272:LEU:HB3	1:A:305:VAL:HG21	1.71	0.72
1:A:272:LEU:HD22	1:A:305:VAL:HG11	1.71	0.72
1:A:235:VAL:HG21	1:A:245:LEU:HD21	1.72	0.72
1:A:240:THR:H	1:A:244:ILE:HD12	1.55	0.71
1:A:579:ARG:HG2	1:A:610:LEU:HD13	1.76	0.68
1:A:429:LEU:HB2	1:A:468:LEU:HD21	1.76	0.68
1:A:361:PHE:HA	1:A:420:ILE:HD11	1.76	0.65
1:A:869:CYS:O	4:A:1205:GOL:H2	1.96	0.65
1:A:241:PRO:HA	1:A:245:LEU:HD12	1.81	0.62
1:A:629:GLN:HG2	1:A:1029:ILE:HG13	1.82	0.62
1:A:304:HIS:HB2	1:A:823:LEU:HD11	1.82	0.62
1:A:293:VAL:HG13	1:A:303:ILE:HD11	1.81	0.60
1:A:855:TRP:CD2	1:A:862:LEU:HD13	2.37	0.60
1:A:272:LEU:HD22	1:A:305:VAL:CG1	2.32	0.60
1:A:280:TYR:HB3	1:A:282:VAL:HG23	1.83	0.59
1:A:368:ILE:HG21	1:A:433:ILE:HD11	1.86	0.58
1:A:240:THR:CG2	1:A:243:ALA:HB3	2.33	0.57
1:A:240:THR:HG23	1:A:244:ILE:H	1.69	0.57
1:A:812:TRP:CZ3	3:A:1204:3VE:H1	2.39	0.56
1:A:767:LEU:HD22	1:A:803:VAL:CG2	2.36	0.54

Continued on next page...

Continued from previous page...

Atom-1	Atom-2	Interatomic distance (Å)	Clash overlap (Å)
1:A:745:VAL:O	1:A:749:ILE:HD13	2.09	0.53
1:A:855:TRP:CE3	1:A:862:LEU:HD13	2.43	0.53
1:A:745:VAL:O	1:A:749:ILE:CD1	2.57	0.53
1:A:941:VAL:HG21	1:A:1020:LEU:HD12	1.90	0.53
1:A:162:VAL:HG12	1:A:177:ARG:HD2	1.91	0.52
1:A:739:ILE:HD12	1:A:872:THR:HG21	1.91	0.52
1:A:803:VAL:HG22	1:A:811:LEU:CD2	2.40	0.51
1:A:812:TRP:HZ3	3:A:1204:3VE:H1	1.76	0.51
1:A:240:THR:HG23	1:A:243:ALA:HB3	1.93	0.51
1:A:466:LEU:HD11	1:A:476:ARG:HD3	1.93	0.50
1:A:614:ARG:NH1	1:A:646:GLN:OE1	2.45	0.50
1:A:579:ARG:HG2	1:A:610:LEU:CD1	2.40	0.50
1:A:287:ILE:HD12	1:A:288:LYS:N	2.27	0.50
1:A:808:LYS:NZ	1:A:836:ASP:OD1	2.42	0.49
1:A:839:ARG:HA	1:A:842:MET:HE2	1.94	0.49
1:A:211:LEU:HD22	1:A:297:LEU:HB3	1.95	0.48
1:A:583:LEU:HD13	1:A:610:LEU:HG	1.95	0.47
1:A:614:ARG:HB2	1:A:617:TRP:HB3	1.96	0.47
1:A:500:ASP:HB3	1:A:708:HIS:CD2	2.50	0.47
1:A:622:LEU:HD13	1:A:647:LYS:HB3	1.96	0.47
1:A:838:LEU:HD12	1:A:877:GLY:HA3	1.96	0.47
1:A:240:THR:HG22	1:A:244:ILE:HD12	1.96	0.47
1:A:364:LYS:HB3	1:A:519:LEU:HB3	1.97	0.46
1:A:651:LEU:HD22	1:A:655:ASP:HB3	1.96	0.46
1:A:739:ILE:HD12	1:A:872:THR:CG2	2.46	0.46
1:A:641:ARG:O	1:A:644:ALA:HB3	2.15	0.45
1:A:640:VAL:O	1:A:643:ILE:HG12	2.16	0.45
1:A:170:ASP:OD2	1:A:476:ARG:NH2	2.49	0.45
1:A:935:TYR:O	1:A:939:THR:HG23	2.15	0.45
1:A:576:TRP:CZ3	1:A:579:ARG:HD2	2.51	0.45
1:A:771:LEU:HD22	1:A:796:LEU:HD13	1.99	0.45
1:A:428:LEU:HD22	1:A:465:ASN:HB3	1.99	0.44
1:A:567:LEU:HD21	1:A:591:LYS:HD3	1.99	0.44
1:A:1084:PHE:CZ	1:A:1088:LEU:HD11	2.52	0.44
1:A:925:VAL:O	1:A:929:VAL:HG23	2.18	0.44
1:A:850:ILE:HD13	1:A:1030:LEU:HD13	2.00	0.44
1:A:233:ILE:HG22	1:A:235:VAL:CG2	2.48	0.44
1:A:865:LEU:HD22	1:A:882:VAL:HG21	2.00	0.44
1:A:240:THR:HG21	1:A:243:ALA:HB3	1.99	0.43
1:A:463:TYR:CE2	1:A:501:LYS:HA	2.53	0.43
1:A:240:THR:HG22	1:A:244:ILE:CD1	2.48	0.43

Continued on next page...

Continued from previous page...

Atom-1	Atom-2	Interatomic distance (Å)	Clash overlap (Å)
1:A:1084:PHE:O	1:A:1087:PHE:HB3	2.19	0.43
1:A:272:LEU:HB3	1:A:305:VAL:CG2	2.44	0.43
1:A:784:ARG:NH1	1:A:789:PRO:O	2.46	0.42
1:A:361:PHE:HA	1:A:420:ILE:CD1	2.45	0.42
1:A:162:VAL:CG1	1:A:177:ARG:HD2	2.48	0.42
1:A:192:ASP:OD2	1:A:195:LEU:HD12	2.19	0.42
1:A:312:ASP:OD2	1:A:314:ALA:HB3	2.20	0.42
1:A:696:PHE:CD1	1:A:717:LEU:HD11	2.55	0.42
1:A:304:HIS:CB	1:A:823:LEU:HD11	2.46	0.42
1:A:788:ASP:OD2	1:A:791:LEU:HD12	2.20	0.42
1:A:803:VAL:HG22	1:A:811:LEU:HD23	2.02	0.41
1:A:590:PRO:HD3	1:A:626:LEU:HD11	2.02	0.41
1:A:580:TYR:CE1	1:A:610:LEU:HD12	2.55	0.41
1:A:862:LEU:HD21	1:A:1016:ALA:HB2	2.02	0.41
1:A:1084:PHE:CE2	1:A:1088:LEU:HD11	2.56	0.41
1:A:554:GLN:HG3	5:A:1320:HOH:O	2.19	0.41
1:A:759:VAL:HG12	1:A:764:ILE:HG13	2.03	0.41
1:A:798:ILE:H	1:A:798:ILE:HD12	1.85	0.41
1:A:363:VAL:HG23	1:A:520:LEU:HD23	2.02	0.41
1:A:233:ILE:HG22	1:A:235:VAL:HG23	2.02	0.41
1:A:235:VAL:CG2	1:A:245:LEU:HD21	2.47	0.41
1:A:468:LEU:HD23	1:A:468:LEU:HA	1.90	0.41
1:A:198:MET:SD	1:A:271:VAL:HG21	2.61	0.41
1:A:198:MET:CE	1:A:282:VAL:HG11	2.50	0.41
1:A:990:ASP:O	1:A:994:VAL:HG23	2.20	0.41
1:A:410:TRP:HB3	1:A:412:VAL:HG22	2.03	0.41
1:A:746:THR:HG23	5:A:1349:HOH:O	2.21	0.41
1:A:1009:PHE:CE2	1:A:1072:ILE:HD13	2.57	0.40
1:A:829:GLY:CA	1:A:881:ILE:HD12	2.51	0.40
1:A:688:ASN:OD1	1:A:690:ARG:N	2.55	0.40
1:A:431:LEU:HD11	1:A:518:ILE:HD13	2.03	0.40

There are no symmetry-related clashes.

5.3 Torsion angles ⓘ

5.3.1 Protein backbone ⓘ

In the following table, the Percentiles column shows the percent Ramachandran outliers of the chain as a percentile score with respect to all X-ray entries followed by that with respect to entries of similar resolution.

The Analysed column shows the number of residues for which the backbone conformation was analysed, and the total number of residues.

Mol	Chain	Analysed	Favoured	Allowed	Outliers	Percentiles	
1	A	800/959 (83%)	768 (96%)	27 (3%)	5 (1%)	30	43

All (5) Ramachandran outliers are listed below:

Mol	Chain	Res	Type
1	A	1079	GLY
1	A	579	ARG
1	A	217	ASN
1	A	916	PRO
1	A	241	PRO

5.3.2 Protein sidechains ⓘ

In the following table, the Percentiles column shows the percent sidechain outliers of the chain as a percentile score with respect to all X-ray entries followed by that with respect to entries of similar resolution.

The Analysed column shows the number of residues for which the sidechain conformation was analysed, and the total number of residues.

Mol	Chain	Analysed	Rotameric	Outliers	Percentiles	
1	A	739/857 (86%)	724 (98%)	15 (2%)	63	81

All (15) residues with a non-rotameric sidechain are listed below:

Mol	Chain	Res	Type
1	A	302	GLU
1	A	305	VAL
1	A	321	GLU
1	A	354	LEU
1	A	395	CYS
1	A	707	ARG
1	A	784	ARG
1	A	799	GLU
1	A	865	LEU
1	A	909	HIS
1	A	959	ASN
1	A	968	ILE
1	A	988	THR
1	A	1039	MET

Continued on next page...

Continued from previous page...

Mol	Chain	Res	Type
1	A	1043	THR

Some sidechains can be flipped to improve hydrogen bonding and reduce clashes. All (3) such sidechains are listed below:

Mol	Chain	Res	Type
1	A	730	HIS
1	A	846	GLN
1	A	959	ASN

5.3.3 RNA [i](#)

There are no RNA molecules in this entry.

5.4 Non-standard residues in protein, DNA, RNA chains [i](#)

There are no non-standard protein/DNA/RNA residues in this entry.

5.5 Carbohydrates [i](#)

There are no carbohydrates in this entry.

5.6 Ligand geometry [i](#)

5 ligands are modelled in this entry.

In the following table, the Counts columns list the number of bonds (or angles) for which Mogul statistics could be retrieved, the number of bonds (or angles) that are observed in the model and the number of bonds (or angles) that are defined in the chemical component dictionary. The Link column lists molecule types, if any, to which the group is linked. The Z score for a bond length (or angle) is the number of standard deviations the observed value is removed from the expected value. A bond length (or angle) with $|Z| > 2$ is considered an outlier worth inspection. RMSZ is the root-mean-square of all Z scores of the bond lengths (or angles).

Mol	Type	Chain	Res	Link	Bond lengths			Bond angles		
					Counts	RMSZ	$\# Z > 2$	Counts	RMSZ	$\# Z > 2$
2	SO4	A	1201	-	4,4,4	0.43	0	6,6,6	0.17	0
2	SO4	A	1202	-	4,4,4	0.39	0	6,6,6	0.14	0
2	SO4	A	1203	-	4,4,4	0.51	0	6,6,6	0.30	0
3	3VE	A	1204	-	29,34,34	2.22	3 (10%)	31,49,49	2.86	11 (35%)
4	GOL	A	1205	-	5,5,5	0.35	0	5,5,5	0.49	0

In the following table, the Chirals column lists the number of chiral outliers, the number of chiral centers analysed, the number of these observed in the model and the number defined in the chemical component dictionary. Similar counts are reported in the Torsion and Rings columns. '-' means no outliers of that kind were identified.

Mol	Type	Chain	Res	Link	Chirals	Torsions	Rings
2	SO4	A	1201	-	-	0/0/0/0	0/0/0/0
2	SO4	A	1202	-	-	0/0/0/0	0/0/0/0
2	SO4	A	1203	-	-	0/0/0/0	0/0/0/0
3	3VE	A	1204	-	-	0/11/12/12	0/5/5/5
4	GOL	A	1205	-	-	0/4/4/4	0/0/0/0

All (3) bond length outliers are listed below:

Mol	Chain	Res	Type	Atoms	Z	Observed(Å)	Ideal(Å)
3	A	1204	3VE	C11-C2	-10.23	1.39	1.49
3	A	1204	3VE	C7-C6	-2.20	1.40	1.42
3	A	1204	3VE	C4-C1	2.25	1.39	1.36

All (11) bond angle outliers are listed below:

Mol	Chain	Res	Type	Atoms	Z	Observed(°)	Ideal(°)
3	A	1204	3VE	N17-C18-N19	-8.71	122.22	128.89
3	A	1204	3VE	C15-C13-C1	-6.09	105.38	111.40
3	A	1204	3VE	C1-C2-N3	-2.52	120.25	122.78
3	A	1204	3VE	C25-C11-C2	-2.45	116.03	119.62
3	A	1204	3VE	C20-C21-N22	-2.12	107.53	109.48
3	A	1204	3VE	C11-C2-N3	2.03	117.47	115.19
3	A	1204	3VE	N14-C16-N19	2.23	122.01	118.13
3	A	1204	3VE	C27-N28-C29	2.38	122.12	118.49
3	A	1204	3VE	C6-C7-CL1	4.60	121.44	118.80
3	A	1204	3VE	C2-N3-C6	5.05	121.93	118.15
3	A	1204	3VE	C18-N19-C16	6.57	121.21	116.48

There are no chirality outliers.

There are no torsion outliers.

There are no ring outliers.

2 monomers are involved in 3 short contacts:

Mol	Chain	Res	Type	Clashes	Symm-Clashes
3	A	1204	3VE	2	0
4	A	1205	GOL	1	0

5.7 Other polymers

There are no such residues in this entry.

5.8 Polymer linkage issues

There are no chain breaks in this entry.

6 Fit of model and data ⓘ

6.1 Protein, DNA and RNA chains ⓘ

In the following table, the column labelled ‘#RSRZ> 2’ contains the number (and percentage) of RSRZ outliers, followed by percent RSRZ outliers for the chain as percentile scores relative to all X-ray entries and entries of similar resolution. The OWAB column contains the minimum, median, 95th percentile and maximum values of the occupancy-weighted average B-factor per residue. The column labelled ‘Q< 0.9’ lists the number of (and percentage) of residues with an average occupancy less than 0.9.

Mol	Chain	Analysed	<RSRZ>	#RSRZ>2	OWAB(Å ²)	Q<0.9
1	A	820/959 (85%)	0.68	103 (12%) 5 5	37, 78, 138, 179	0

All (103) RSRZ outliers are listed below:

Mol	Chain	Res	Type	RSRZ
1	A	998	SER	9.8
1	A	243	ALA	8.3
1	A	999	GLY	8.2
1	A	895	THR	7.6
1	A	980	LYS	7.0
1	A	437	LYS	6.9
1	A	244	ILE	6.0
1	A	231	GLN	5.8
1	A	1089	HIS	5.8
1	A	1000	LYS	5.6
1	A	217	ASN	5.5
1	A	823	LEU	5.3
1	A	246	GLN	5.1
1	A	228	THR	5.0
1	A	1058	GLY	4.9
1	A	351	THR	4.8
1	A	894	SER	4.8
1	A	777	SER	4.7
1	A	148	GLN	4.6
1	A	211	LEU	4.6
1	A	315	LEU	4.6
1	A	226	ARG	4.5
1	A	216	ALA	4.3
1	A	355	TRP	4.3
1	A	986	VAL	4.3
1	A	458	VAL	4.3
1	A	1044	SER	4.2

Continued on next page...

Continued from previous page...

Mol	Chain	Res	Type	RSRZ
1	A	457	LYS	4.2
1	A	993	PHE	4.2
1	A	152	ARG	4.1
1	A	778	GLN	4.1
1	A	212	TRP	4.0
1	A	898	ASN	4.0
1	A	613	ARG	3.9
1	A	307	LEU	3.7
1	A	322	GLU	3.7
1	A	149	ALA	3.7
1	A	1077	ASP	3.7
1	A	215	ILE	3.6
1	A	511	GLU	3.6
1	A	1062	GLU	3.5
1	A	354	LEU	3.5
1	A	352	VAL	3.5
1	A	309	THR	3.5
1	A	320	LYS	3.5
1	A	221	PHE	3.4
1	A	242	GLY	3.4
1	A	717	LEU	3.3
1	A	938	ALA	3.3
1	A	319	ARG	3.3
1	A	150	PHE	3.3
1	A	937	VAL	3.2
1	A	229	THR	3.1
1	A	210	TYR	3.1
1	A	1064	ALA	3.1
1	A	911	LEU	3.1
1	A	716	ILE	3.0
1	A	945	GLY	3.0
1	A	936	CYS	3.0
1	A	916	PRO	2.9
1	A	436	GLY	2.8
1	A	759	VAL	2.8
1	A	213	LYS	2.7
1	A	944	ILE	2.7
1	A	477	ARG	2.7
1	A	1043	THR	2.7
1	A	730	HIS	2.7
1	A	1046	GLU	2.7
1	A	497	PHE	2.7

Continued on next page...

Continued from previous page...

Mol	Chain	Res	Type	RSRZ
1	A	825	ASN	2.6
1	A	310	PRO	2.6
1	A	981	GLU	2.6
1	A	522	ASN	2.6
1	A	234	LYS	2.5
1	A	1088	LEU	2.5
1	A	775	GLN	2.5
1	A	939	THR	2.5
1	A	762	GLN	2.5
1	A	312	ASP	2.5
1	A	776	ASN	2.5
1	A	720	TYR	2.5
1	A	781	GLU	2.5
1	A	912	LYS	2.4
1	A	609	GLN	2.4
1	A	473	PHE	2.4
1	A	941	VAL	2.4
1	A	356	ASP	2.3
1	A	214	LYS	2.2
1	A	209	GLU	2.2
1	A	1047	ASP	2.2
1	A	896	VAL	2.2
1	A	942	LEU	2.2
1	A	194	LYS	2.2
1	A	909	HIS	2.1
1	A	1073	GLU	2.1
1	A	913	GLU	2.1
1	A	1040	PRO	2.1
1	A	1045	LYS	2.1
1	A	948	HIS	2.1
1	A	924	ALA	2.0
1	A	1048	ILE	2.0
1	A	227	SER	2.0
1	A	763	VAL	2.0

6.2 Non-standard residues in protein, DNA, RNA chains ⓘ

There are no non-standard protein/DNA/RNA residues in this entry.

6.3 Carbohydrates [i](#)

There are no carbohydrates in this entry.

6.4 Ligands [i](#)

In the following table, the Atoms column lists the number of modelled atoms in the group and the number defined in the chemical component dictionary. LLDF column lists the quality of electron density of the group with respect to its neighbouring residues in protein, DNA or RNA chains. The B-factors column lists the minimum, median, 95th percentile and maximum values of B factors of atoms in the group. The column labelled 'Q< 0.9' lists the number of atoms with occupancy less than 0.9.

Mol	Type	Chain	Res	Atoms	RSCC	RSR	LLDF	B-factors(\AA^2)	Q<0.9
4	GOL	A	1205	6/6	0.89	0.27	4.27	57,68,73,73	0
2	SO4	A	1202	5/5	0.94	0.17	0.22	87,91,106,118	0
2	SO4	A	1203	5/5	0.95	0.17	-0.03	61,67,77,86	0
3	3VE	A	1204	30/30	0.96	0.14	-0.50	48,60,69,75	0
2	SO4	A	1201	5/5	0.94	0.10	-1.58	79,100,109,116	0

6.5 Other polymers [i](#)

There are no such residues in this entry.