



# Full wwPDB X-ray Structure Validation Report ⓘ

Feb 19, 2016 – 06:43 PM GMT

PDB ID : 3X31  
Title : Crystal structure of the human vitamin D receptor ligand binding domain  
complexed with 7,8-cis-14-epi-1 $\alpha$ ,25-Dihydroxy-19-norvitamin D3  
Authors : Kakuda, S.; Takimoto-Kamimura, M.  
Deposited on : 2015-01-13  
Resolution : 2.11 Å(reported)

This is a Full wwPDB X-ray Structure Validation Report for a publicly released PDB entry.  
We welcome your comments at [validation@mail.wwpdb.org](mailto:validation@mail.wwpdb.org)  
A user guide is available at  
<http://wwpdb.org/validation/2016/XrayValidationReportHelp>  
with specific help available everywhere you see the ⓘ symbol.

---

The following versions of software and data (see [references ⓘ](#)) were used in the production of this report:

MolProbity : 4.02b-467  
Mogul : 1.7.1 (RC1), CSD as537be (2016)  
Xtriage (Phenix) : 1.9-1692  
EDS : rb-20026982  
Percentile statistics : 20151230.v01 (using entries in the PDB archive December 30th 2015)  
Refmac : 5.8.0135  
CCP4 : 6.5.0  
Ideal geometry (proteins) : Engh & Huber (2001)  
Ideal geometry (DNA, RNA) : Parkinson et al. (1996)  
Validation Pipeline (wwPDB-VP) : rb-20026982

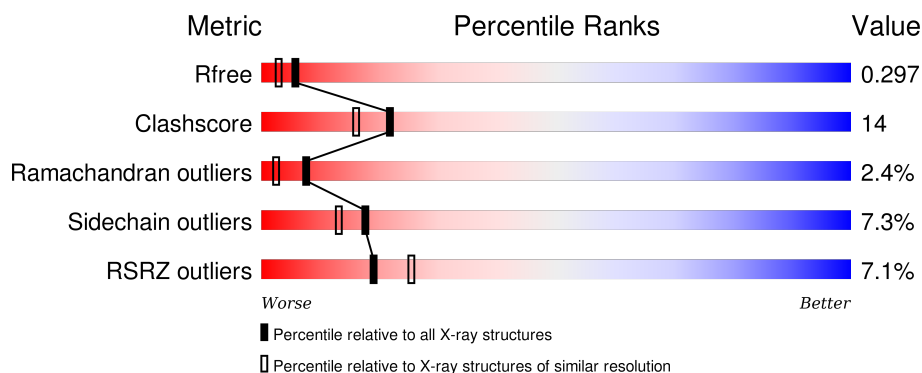
# 1 Overall quality at a glance

The following experimental techniques were used to determine the structure:

## *X-RAY DIFFRACTION*


The reported resolution of this entry is 2.11 Å.

Percentile scores (ranging between 0-100) for global validation metrics of the entry are shown in the following graphic. The table shows the number of entries on which the scores are based.



Metric	Whole archive (#Entries)	Similar resolution (#Entries, resolution range(Å))
$R_{free}$	91344	4587 (2.14-2.10)
Clashscore	102246	5132 (2.14-2.10)
Ramachandran outliers	100387	5080 (2.14-2.10)
Sidechain outliers	100360	5081 (2.14-2.10)
RSRZ outliers	91569	4597 (2.14-2.10)

The table below summarises the geometric issues observed across the polymeric chains and their fit to the electron density. The red, orange, yellow and green segments on the lower bar indicate the fraction of residues that contain outliers for  $\geq 3$ , 2, 1 and 0 types of geometric quality criteria. A grey segment represents the fraction of residues that are not modelled. The numeric value for each fraction is indicated below the corresponding segment, with a dot representing fractions  $\leq 5\%$ . The upper red bar (where present) indicates the fraction of residues that have poor fit to the electron density. The numeric value is given above the bar.

Mol	Chain	Length	Quality of chain
1	A	263	

## 2 Entry composition [i](#)

There are 3 unique types of molecules in this entry. The entry contains 2102 atoms, of which 0 are hydrogens and 0 are deuteriums.

In the tables below, the ZeroOcc column contains the number of atoms modelled with zero occupancy, the AltConf column contains the number of residues with at least one atom in alternate conformation and the Trace column contains the number of residues modelled with at most 2 atoms.

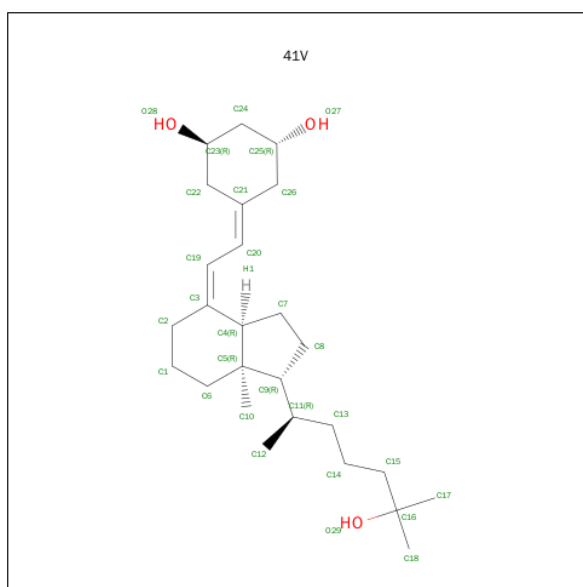
- Molecule 1 is a protein called Vitamin D3 receptor.

Mol	Chain	Residues	Atoms					ZeroOcc	AltConf	Trace
			Total	C	N	O	S			
1	A	254	2022	1283	346	379	14	0	0	0

There are 4 discrepancies between the modelled and reference sequences:

Chain	Residue	Modelled	Actual	Comment	Reference
A	114	GLY	-	EXPRESSION TAG	UNP P11473
A	115	SER	-	EXPRESSION TAG	UNP P11473
A	116	HIS	-	EXPRESSION TAG	UNP P11473
A	117	MET	-	EXPRESSION TAG	UNP P11473

- Molecule 2 is (1R,3R,7Z,14BETA,17ALPHA)-17-[(2R)-6-HYDROXY-6-METHYLHEPTAN-2-YL]-9,10-SECOESTRA-5,7-DIENE-1,3-DIOL (three-letter code: 41V) (formula:  $C_{26}H_{44}O_3$ ).



Mol	Chain	Residues	Atoms			ZeroOcc	AltConf
2	A	1	Total	C	O	0	0
			29	26	3		

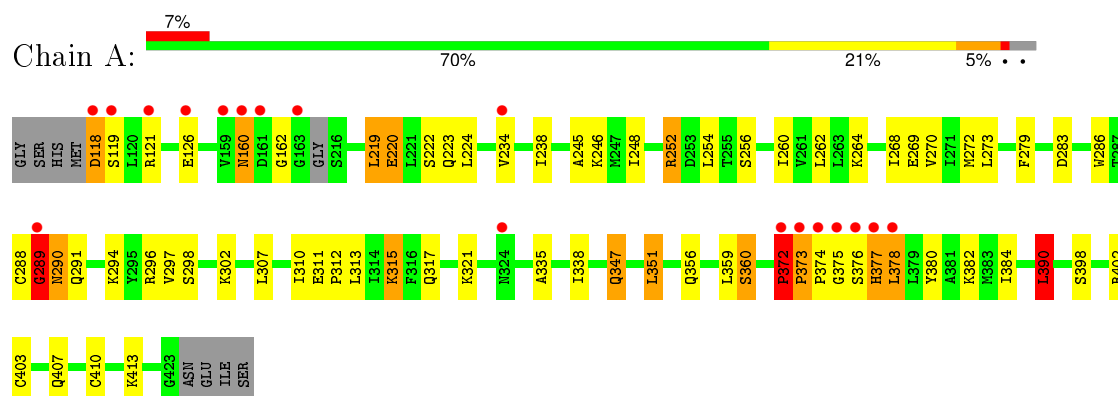
- Molecule 3 is water.

Mol	Chain	Residues	Atoms		ZeroOcc	AltConf
3	A	51	Total	O	0	0
			51	51		

### 3 Residue-property plots [i](#)

These plots are drawn for all protein, RNA and DNA chains in the entry. The first graphic for a chain summarises the proportions of errors displayed in the second graphic. The second graphic shows the sequence view annotated by issues in geometry and electron density. Residues are color-coded according to the number of geometric quality criteria for which they contain at least one outlier: green = 0, yellow = 1, orange = 2 and red = 3 or more. A red dot above a residue indicates a poor fit to the electron density ( $\text{RSRZ} > 2$ ). Stretches of 2 or more consecutive residues without any outlier are shown as a green connector. Residues present in the sample, but not in the model, are shown in grey.

- Molecule 1: Vitamin D3 receptor



## 4 Data and refinement statistics

Property	Value	Source
Space group	P 21 21 21	Depositor
Cell constants a, b, c, $\alpha$ , $\beta$ , $\gamma$	44.37Å 51.51Å 131.52Å 90.00° 90.00° 90.00°	Depositor
Resolution (Å)	26.69 – 2.11 26.68 – 2.11	Depositor EDS
% Data completeness (in resolution range)	99.1 (26.69-2.11) 99.2 (26.68-2.11)	Depositor EDS
$R_{merge}$	(Not available)	Depositor
$R_{sym}$	(Not available)	Depositor
$\langle I/\sigma(I) \rangle$ <sup>1</sup>	11.84 (at 2.10Å)	Xtriage
Refinement program	REFMAC 5.7.0029	Depositor
R, $R_{free}$	0.237 , 0.299 0.237 , 0.297	Depositor DCC
$R_{free}$ test set	913 reflections (5.36%)	DCC
Wilson B-factor (Å <sup>2</sup> )	26.1	Xtriage
Anisotropy	0.281	Xtriage
Bulk solvent $k_{sol}$ (e/Å <sup>3</sup> ), $B_{sol}$ (Å <sup>2</sup> )	0.37 , 41.7	EDS
Estimated twinning fraction	No twinning to report.	Xtriage
L-test for twinning <sup>2</sup>	$\langle  L  \rangle = 0.42$ , $\langle L^2 \rangle = 0.25$	Xtriage
Outliers	1 of 17977 reflections (0.006%)	Xtriage
$F_o, F_c$ correlation	0.91	EDS
Total number of atoms	2102	wwPDB-VP
Average B, all atoms (Å <sup>2</sup> )	31.0	wwPDB-VP

Xtriage's analysis on translational NCS is as follows: *The largest off-origin peak in the Patterson function is 7.06% of the height of the origin peak. No significant pseudotranslation is detected.*

<sup>1</sup>Intensities estimated from amplitudes.

<sup>2</sup>Theoretical values of  $\langle |L| \rangle$ ,  $\langle L^2 \rangle$  for acentric reflections are 0.5, 0.375 respectively for untwinned datasets, and 0.333, 0.2 for perfectly twinned datasets.

## 5 Model quality

### 5.1 Standard geometry

Bond lengths and bond angles in the following residue types are not validated in this section: 41V

The Z score for a bond length (or angle) is the number of standard deviations the observed value is removed from the expected value. A bond length (or angle) with  $|Z| > 5$  is considered an outlier worth inspection. RMSZ is the root-mean-square of all Z scores of the bond lengths (or angles).

Mol	Chain	Bond lengths		Bond angles	
		RMSZ	$\# Z  > 5$	RMSZ	$\# Z  > 5$
1	A	0.82	0/2061	0.97	4/2787 (0.1%)

Chiral center outliers are detected by calculating the chiral volume of a chiral center and verifying if the center is modelled as a planar moiety or with the opposite hand. A planarity outlier is detected by checking planarity of atoms in a peptide group, atoms in a mainchain group or atoms of a sidechain that are expected to be planar.

Mol	Chain	#Chirality outliers	#Planarity outliers
1	A	0	3

There are no bond length outliers.

All (4) bond angle outliers are listed below:

Mol	Chain	Res	Type	Atoms	Z	Observed( $^{\circ}$ )	Ideal( $^{\circ}$ )
1	A	289	GLY	N-CA-C	-9.57	89.16	113.10
1	A	288	CYS	C-N-CA	5.86	134.60	122.30
1	A	390	LEU	CB-CG-CD1	5.61	120.54	111.00
1	A	262	LEU	CB-CG-CD1	-5.09	102.35	111.00

There are no chirality outliers.

All (3) planarity outliers are listed below:

Mol	Chain	Res	Type	Group
1	A	289	GLY	Peptide
1	A	372	PRO	Peptide
1	A	376	SER	Peptide

## 5.2 Too-close contacts ⓘ

In the following table, the Non-H and H(model) columns list the number of non-hydrogen atoms and hydrogen atoms in the chain respectively. The H(added) column lists the number of hydrogen atoms added and optimized by MolProbity. The Clashes column lists the number of clashes within the asymmetric unit, whereas Symm-Clashes lists symmetry related clashes.

Mol	Chain	Non-H	H(model)	H(added)	Clashes	Symm-Clashes
1	A	2022	0	2045	55	0
2	A	29	0	44	4	0
3	A	51	0	0	11	0
All	All	2102	0	2089	58	0

The all-atom clashscore is defined as the number of clashes found per 1000 atoms (including hydrogen atoms). The all-atom clashscore for this structure is 14.

All (58) close contacts within the same asymmetric unit are listed below, sorted by their clash magnitude.

Atom-1	Atom-2	Interatomic distance (Å)	Clash overlap (Å)
1:A:372:PRO:HB2	1:A:373:PRO:HA	1.41	1.00
1:A:311:GLU:HG2	1:A:312:PRO:HD3	1.45	0.98
1:A:220:GLU:OE2	1:A:220:GLU:HA	1.65	0.96
1:A:382:LYS:HB3	3:A:630:HOH:O	1.71	0.89
1:A:347:GLN:HE21	1:A:347:GLN:C	1.83	0.82
1:A:372:PRO:HB2	1:A:373:PRO:CA	2.13	0.78
1:A:378:LEU:HB3	3:A:634:HOH:O	1.85	0.74
1:A:289:GLY:HA2	1:A:290:ASN:O	1.89	0.73
1:A:220:GLU:CA	1:A:220:GLU:OE2	2.37	0.72
1:A:224:LEU:HB2	1:A:413:LYS:HE2	1.70	0.71
1:A:245:ALA:HA	1:A:248:ILE:HD12	1.73	0.71
1:A:220:GLU:OE1	1:A:302:LYS:HG2	1.91	0.71
1:A:378:LEU:CB	3:A:634:HOH:O	2.40	0.69
1:A:402:ARG:HD3	3:A:609:HOH:O	1.89	0.69
1:A:372:PRO:CB	1:A:373:PRO:HA	2.20	0.69
1:A:311:GLU:HG2	1:A:312:PRO:CD	2.19	0.69
1:A:311:GLU:HG3	3:A:620:HOH:O	1.92	0.68
1:A:378:LEU:HA	3:A:647:HOH:O	1.95	0.67
1:A:373:PRO:HD2	1:A:374:PRO:HA	1.76	0.67
1:A:373:PRO:CD	1:A:374:PRO:HA	2.28	0.63
1:A:373:PRO:N	1:A:374:PRO:HA	2.15	0.62
1:A:118:ASP:OD1	1:A:118:ASP:N	2.36	0.59
1:A:246:LYS:HE3	1:A:252:ARG:NH2	2.17	0.59
1:A:283:ASP:OD2	1:A:294:LYS:NZ	2.39	0.55

*Continued on next page...*



*Continued from previous page...*

Atom-1	Atom-2	Interatomic distance (Å)	Clash overlap (Å)
1:A:220:GLU:HB2	3:A:635:HOH:O	2.07	0.54
1:A:380:TYR:CZ	1:A:384:ILE:HD11	2.44	0.53
1:A:273:LEU:HG	1:A:390:LEU:HD21	1.90	0.52
1:A:234:VAL:O	1:A:238:ILE:HG13	2.10	0.52
1:A:378:LEU:C	3:A:634:HOH:O	2.48	0.51
1:A:256:SER:O	1:A:260:ILE:HG12	2.11	0.51
1:A:298:SER:O	1:A:302:LYS:HG3	2.11	0.50
1:A:219:LEU:HD22	1:A:223:GLN:HG2	1.92	0.50
1:A:279:PHE:O	1:A:321:LYS:HE3	2.12	0.49
1:A:375:GLY:HA2	3:A:629:HOH:O	2.11	0.49
1:A:311:GLU:O	1:A:315:LYS:HE2	2.14	0.47
1:A:297:VAL:HG13	1:A:310:ILE:HG21	1.97	0.47
1:A:270:VAL:HG21	1:A:338:ILE:HG13	1.96	0.47
1:A:269:GLU:HB3	1:A:390:LEU:HG	1.97	0.45
2:A:501:41V:H11	2:A:501:41V:C10	2.47	0.45
1:A:373:PRO:HD2	1:A:374:PRO:CA	2.44	0.45
1:A:219:LEU:HD22	1:A:223:GLN:CG	2.46	0.45
1:A:296:ARG:HG2	3:A:618:HOH:O	2.16	0.44
1:A:119:SER:HB3	3:A:643:HOH:O	2.17	0.44
1:A:268:ILE:O	1:A:272:MET:HG3	2.17	0.43
1:A:126:GLU:CD	1:A:126:GLU:H	2.22	0.42
1:A:356:GLN:O	1:A:360:SER:OG	2.38	0.42
1:A:407:GLN:O	1:A:410:CYS:HB2	2.18	0.42
1:A:335:ALA:HB1	1:A:359:LEU:HD13	2.02	0.42
1:A:283:ASP:N	1:A:283:ASP:OD1	2.53	0.41
1:A:254:LEU:HD23	1:A:351:LEU:HD13	2.02	0.41
1:A:313:LEU:O	1:A:317:GLN:HG2	2.21	0.41
2:A:501:41V:H11	2:A:501:41V:H9	2.01	0.41
1:A:260:ILE:HG22	1:A:264:LYS:HD2	2.02	0.41
2:A:501:41V:H1	2:A:501:41V:H18	1.81	0.41
1:A:246:LYS:HE3	1:A:252:ARG:HH21	1.84	0.41
1:A:377:HIS:C	1:A:377:HIS:ND1	2.75	0.41
1:A:351:LEU:HA	1:A:351:LEU:HD23	1.92	0.40
1:A:286:TRP:CD2	2:A:501:41V:H38	2.56	0.40

There are no symmetry-related clashes.

## 5.3 Torsion angles [i](#)

### 5.3.1 Protein backbone [i](#)

In the following table, the Percentiles column shows the percent Ramachandran outliers of the chain as a percentile score with respect to all X-ray entries followed by that with respect to entries of similar resolution.

The Analysed column shows the number of residues for which the backbone conformation was analysed, and the total number of residues.

Mol	Chain	Analysed	Favoured	Allowed	Outliers	Percentiles
1	A	250/263 (95%)	232 (93%)	12 (5%)	6 (2%)	<b>7</b> <b>2</b>

All (6) Ramachandran outliers are listed below:

Mol	Chain	Res	Type
1	A	160	ASN
1	A	290	ASN
1	A	372	PRO
1	A	162	GLY
1	A	373	PRO
1	A	378	LEU

### 5.3.2 Protein sidechains [i](#)

In the following table, the Percentiles column shows the percent sidechain outliers of the chain as a percentile score with respect to all X-ray entries followed by that with respect to entries of similar resolution.

The Analysed column shows the number of residues for which the sidechain conformation was analysed, and the total number of residues.

Mol	Chain	Analysed	Rotameric	Outliers	Percentiles
1	A	232/239 (97%)	215 (93%)	17 (7%)	<b>17</b> <b>13</b>

All (17) residues with a non-rotameric sidechain are listed below:

Mol	Chain	Res	Type
1	A	118	ASP
1	A	121	ARG
1	A	160	ASN
1	A	219	LEU
1	A	220	GLU

*Continued on next page...*

*Continued from previous page...*

Mol	Chain	Res	Type
1	A	222	SER
1	A	252	ARG
1	A	291	GLN
1	A	307	LEU
1	A	315	LYS
1	A	347	GLN
1	A	351	LEU
1	A	360	SER
1	A	377	HIS
1	A	390	LEU
1	A	398	SER
1	A	403	CYS

Some sidechains can be flipped to improve hydrogen bonding and reduce clashes. All (3) such sidechains are listed below:

Mol	Chain	Res	Type
1	A	324	ASN
1	A	347	GLN
1	A	407	GLN

### 5.3.3 RNA [i](#)

There are no RNA molecules in this entry.

## 5.4 Non-standard residues in protein, DNA, RNA chains [i](#)

There are no non-standard protein/DNA/RNA residues in this entry.

## 5.5 Carbohydrates [i](#)

There are no carbohydrates in this entry.

## 5.6 Ligand geometry [i](#)

1 ligand is modelled in this entry.

In the following table, the Counts columns list the number of bonds (or angles) for which Mogul statistics could be retrieved, the number of bonds (or angles) that are observed in the model and the number of bonds (or angles) that are defined in the chemical component dictionary. The Link

column lists molecule types, if any, to which the group is linked. The Z score for a bond length (or angle) is the number of standard deviations the observed value is removed from the expected value. A bond length (or angle) with  $|Z| > 2$  is considered an outlier worth inspection. RMSZ is the root-mean-square of all Z scores of the bond lengths (or angles).

Mol	Type	Chain	Res	Link	Bond lengths			Bond angles		
					Counts	RMSZ	# Z  > 2	Counts	RMSZ	# Z  > 2
2	41V	A	501	-	30,31,31	0.96	2 (6%)	43,46,46	2.25	19 (44%)

In the following table, the Chirals column lists the number of chiral outliers, the number of chiral centers analysed, the number of these observed in the model and the number defined in the chemical component dictionary. Similar counts are reported in the Torsion and Rings columns. '-' means no outliers of that kind were identified.

Mol	Type	Chain	Res	Link	Chirals	Torsions	Rings
2	41V	A	501	-	-	0/16/56/56	0/3/3/3

All (2) bond length outliers are listed below:

Mol	Chain	Res	Type	Atoms	Z	Observed(Å)	Ideal(Å)
2	A	501	41V	C22-C23	2.09	1.56	1.52
2	A	501	41V	C11-C9	2.22	1.58	1.54

All (19) bond angle outliers are listed below:

Mol	Chain	Res	Type	Atoms	Z	Observed(°)	Ideal(°)
2	A	501	41V	C10-C5-C4	-4.81	101.78	110.07
2	A	501	41V	C6-C5-C9	-3.98	110.73	116.58
2	A	501	41V	C2-C3-C19	-3.94	120.79	125.50
2	A	501	41V	C20-C19-C3	-3.72	121.16	125.82
2	A	501	41V	C25-C24-C23	-2.80	106.23	112.60
2	A	501	41V	C8-C7-C4	-2.59	101.23	105.45
2	A	501	41V	C19-C20-C21	-2.19	123.26	126.23
2	A	501	41V	O27-C25-C26	-2.18	104.75	109.69
2	A	501	41V	C7-C4-C3	-2.02	117.66	120.65
2	A	501	41V	C17-C16-C18	2.01	115.20	110.41
2	A	501	41V	C8-C9-C5	2.24	106.45	103.83
2	A	501	41V	C2-C3-C4	2.31	118.99	113.35
2	A	501	41V	C13-C11-C9	2.35	115.19	110.24
2	A	501	41V	C7-C4-C5	2.51	106.52	104.19
2	A	501	41V	C5-C4-C3	2.59	116.81	112.72
2	A	501	41V	O28-C23-C22	2.82	116.08	109.69
2	A	501	41V	C6-C5-C4	3.18	112.94	107.15
2	A	501	41V	C4-C5-C9	4.40	104.36	99.75

*Continued on next page...*

*Continued from previous page...*

Mol	Chain	Res	Type	Atoms	Z	Observed(°)	Ideal(°)
2	A	501	41V	C8-C9-C11	4.77	119.75	112.12

There are no chirality outliers.

There are no torsion outliers.

There are no ring outliers.

1 monomer is involved in 4 short contacts:

Mol	Chain	Res	Type	Clashes	Symm-Clashes
2	A	501	41V	4	0

## 5.7 Other polymers [i](#)

There are no such residues in this entry.

## 5.8 Polymer linkage issues [i](#)

There are no chain breaks in this entry.

## 6 Fit of model and data ⓘ

### 6.1 Protein, DNA and RNA chains ⓘ

In the following table, the column labelled ‘#RSRZ> 2’ contains the number (and percentage) of RSRZ outliers, followed by percent RSRZ outliers for the chain as percentile scores relative to all X-ray entries and entries of similar resolution. The OWAB column contains the minimum, median, 95<sup>th</sup> percentile and maximum values of the occupancy-weighted average B-factor per residue. The column labelled ‘Q< 0.9’ lists the number of (and percentage) of residues with an average occupancy less than 0.9.

Mol	Chain	Analysed	<RSRZ>	#RSRZ>2		OWAB(Å <sup>2</sup> )	Q<0.9
1	A	254/263 (96%)	0.45	18 (7%)	19 25	17, 29, 57, 110	0

All (18) RSRZ outliers are listed below:

Mol	Chain	Res	Type	RSRZ
1	A	373	PRO	14.7
1	A	374	PRO	13.9
1	A	377	HIS	5.4
1	A	376	SER	4.4
1	A	118	ASP	3.9
1	A	159	VAL	3.9
1	A	372	PRO	3.1
1	A	119	SER	3.0
1	A	234	VAL	2.7
1	A	121	ARG	2.5
1	A	378	LEU	2.4
1	A	375	GLY	2.4
1	A	289	GLY	2.2
1	A	126	GLU	2.2
1	A	161	ASP	2.2
1	A	163	GLY	2.1
1	A	160	ASN	2.1
1	A	324	ASN	2.0

### 6.2 Non-standard residues in protein, DNA, RNA chains ⓘ

There are no non-standard protein/DNA/RNA residues in this entry.

### 6.3 Carbohydrates [i](#)

There are no carbohydrates in this entry.

### 6.4 Ligands [i](#)

In the following table, the Atoms column lists the number of modelled atoms in the group and the number defined in the chemical component dictionary. LLDF column lists the quality of electron density of the group with respect to its neighbouring residues in protein, DNA or RNA chains. The B-factors column lists the minimum, median, 95<sup>th</sup> percentile and maximum values of B factors of atoms in the group. The column labelled 'Q< 0.9' lists the number of atoms with occupancy less than 0.9.

Mol	Type	Chain	Res	Atoms	RSCC	RSR	LLDF	B-factors( $\text{\AA}^2$ )	Q<0.9
2	41V	A	501	29/29	0.93	0.19	1.30	17,19,24,25	0

### 6.5 Other polymers [i](#)

There are no such residues in this entry.