



Full wwPDB X-ray Structure Validation Report ⓘ

Feb 1, 2016 – 10:18 PM GMT

PDB ID : 4XC6
Title : Isobutyryl-CoA mutase fused with bound adenosylcobalamin, GDP, and Mg (holo-IcmF/GDP)
Authors : Jost, M.; Drennan, C.L.
Deposited on : 2014-12-17
Resolution : 3.35 Å(reported)

This is a Full wwPDB X-ray Structure Validation Report for a publicly released PDB entry.
We welcome your comments at validation@mail.wwpdb.org
A user guide is available at
<http://wwpdb.org/validation/2016/XrayValidationReportHelp>
with specific help available everywhere you see the ⓘ symbol.

The following versions of software and data (see [references ⓘ](#)) were used in the production of this report:

MolProbity : 4.02b-467
Mogul : 1.7 (RC4), CSD as536be (2015)
Xtriage (Phenix) : 1.9-1692
EDS : rb-20026688
Percentile statistics : 20151230.v01 (using entries in the PDB archive December 30th 2015)
Refmac : 5.8.0135
CCP4 : 6.5.0
Ideal geometry (proteins) : Engh & Huber (2001)
Ideal geometry (DNA, RNA) : Parkinson et al. (1996)
Validation Pipeline (wwPDB-VP) : trunk26865

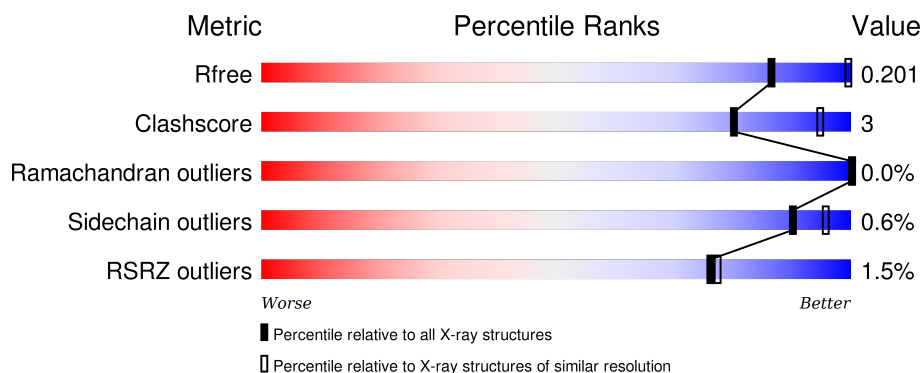
1 Overall quality at a glance

The following experimental techniques were used to determine the structure:

X-RAY DIFFRACTION


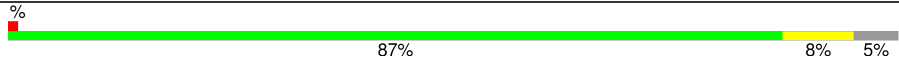
The reported resolution of this entry is 3.35 Å.

Percentile scores (ranging between 0-100) for global validation metrics of the entry are shown in the following graphic. The table shows the number of entries on which the scores are based.



Metric	Whole archive (#Entries)	Similar resolution (#Entries, resolution range(Å))
R_{free}	91344	1005 (3.42-3.30)
Clashscore	102246	1076 (3.42-3.30)
Ramachandran outliers	100387	1059 (3.42-3.30)
Sidechain outliers	100360	1058 (3.42-3.30)
RSRZ outliers	91569	1010 (3.42-3.30)

The table below summarises the geometric issues observed across the polymeric chains and their fit to the electron density. The red, orange, yellow and green segments on the lower bar indicate the fraction of residues that contain outliers for ≥ 3 , 2, 1 and 0 types of geometric quality criteria. A grey segment represents the fraction of residues that are not modelled. The numeric value for each fraction is indicated below the corresponding segment, with a dot representing fractions $\leq 5\%$. The upper red bar (where present) indicates the fraction of residues that have poor fit to the electron density. The numeric value is given above the bar.

Mol	Chain	Length	Quality of chain
1	A	1113	
1	B	1113	

The following table lists non-polymeric compounds, carbohydrate monomers and non-standard residues in protein, DNA, RNA chains that are outliers for geometric or electron-density-fit criteria:

Mol	Type	Chain	Res	Chirality	Geometry	Clashes	Electron density
3	5AD	A	1102	-	-	-	X
5	MG	B	1103	-	-	-	X

2 Entry composition

There are 6 unique types of molecules in this entry. The entry contains 16546 atoms, of which 0 are hydrogens and 0 are deuteriums.

In the tables below, the ZeroOcc column contains the number of atoms modelled with zero occupancy, the AltConf column contains the number of residues with at least one atom in alternate conformation and the Trace column contains the number of residues modelled with at most 2 atoms.

- Molecule 1 is a protein called Isobutyryl-CoA mutase fused.

Mol	Chain	Residues	Atoms					ZeroOcc	AltConf	Trace
1	A	1067	Total	C	N	O	S	0	0	0
			8166	5100	1465	1564	37			
1	B	1061	Total	C	N	O	S	0	0	0
			8116	5061	1469	1549	37			

There are 40 discrepancies between the modelled and reference sequences:

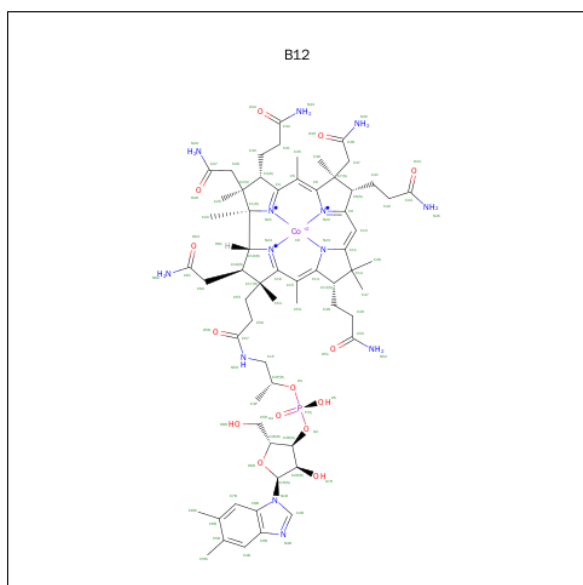
Chain	Residue	Modelled	Actual	Comment	Reference
A	-19	MET	-	initiating methionine	UNP Q1LRY0
A	-18	GLY	-	expression tag	UNP Q1LRY0
A	-17	SER	-	expression tag	UNP Q1LRY0
A	-16	SER	-	expression tag	UNP Q1LRY0
A	-15	HIS	-	expression tag	UNP Q1LRY0
A	-14	HIS	-	expression tag	UNP Q1LRY0
A	-13	HIS	-	expression tag	UNP Q1LRY0
A	-12	HIS	-	expression tag	UNP Q1LRY0
A	-11	HIS	-	expression tag	UNP Q1LRY0
A	-10	HIS	-	expression tag	UNP Q1LRY0
A	-9	SER	-	expression tag	UNP Q1LRY0
A	-8	SER	-	expression tag	UNP Q1LRY0
A	-7	GLY	-	expression tag	UNP Q1LRY0
A	-6	LEU	-	expression tag	UNP Q1LRY0
A	-5	VAL	-	expression tag	UNP Q1LRY0
A	-4	PRO	-	expression tag	UNP Q1LRY0
A	-3	ARG	-	expression tag	UNP Q1LRY0
A	-2	GLY	-	expression tag	UNP Q1LRY0
A	-1	SER	-	expression tag	UNP Q1LRY0
A	0	HIS	-	expression tag	UNP Q1LRY0
B	-19	MET	-	initiating methionine	UNP Q1LRY0
B	-18	GLY	-	expression tag	UNP Q1LRY0
B	-17	SER	-	expression tag	UNP Q1LRY0
B	-16	SER	-	expression tag	UNP Q1LRY0
B	-15	HIS	-	expression tag	UNP Q1LRY0

Continued on next page...

Continued from previous page...

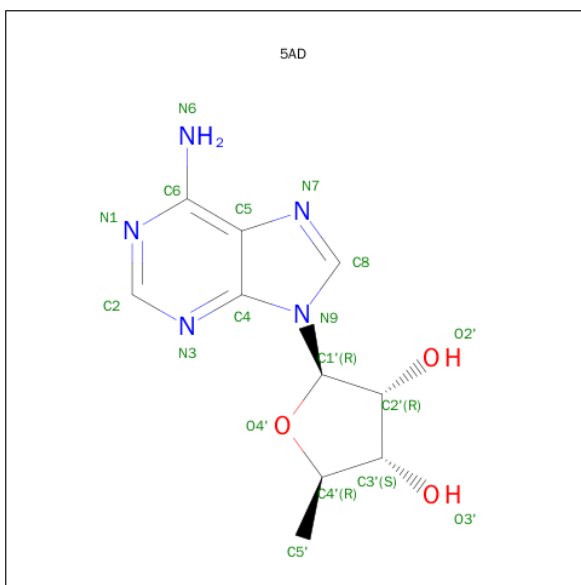
Chain	Residue	Modelled	Actual	Comment	Reference
B	-14	HIS	-	expression tag	UNP Q1LRY0
B	-13	HIS	-	expression tag	UNP Q1LRY0
B	-12	HIS	-	expression tag	UNP Q1LRY0
B	-11	HIS	-	expression tag	UNP Q1LRY0
B	-10	HIS	-	expression tag	UNP Q1LRY0
B	-9	SER	-	expression tag	UNP Q1LRY0
B	-8	SER	-	expression tag	UNP Q1LRY0
B	-7	GLY	-	expression tag	UNP Q1LRY0
B	-6	LEU	-	expression tag	UNP Q1LRY0
B	-5	VAL	-	expression tag	UNP Q1LRY0
B	-4	PRO	-	expression tag	UNP Q1LRY0
B	-3	ARG	-	expression tag	UNP Q1LRY0
B	-2	GLY	-	expression tag	UNP Q1LRY0
B	-1	SER	-	expression tag	UNP Q1LRY0
B	0	HIS	-	expression tag	UNP Q1LRY0

- Molecule 2 is COBALAMIN (three-letter code: B12) (formula: $C_{62}H_{89}CoN_{13}O_{14}P$).



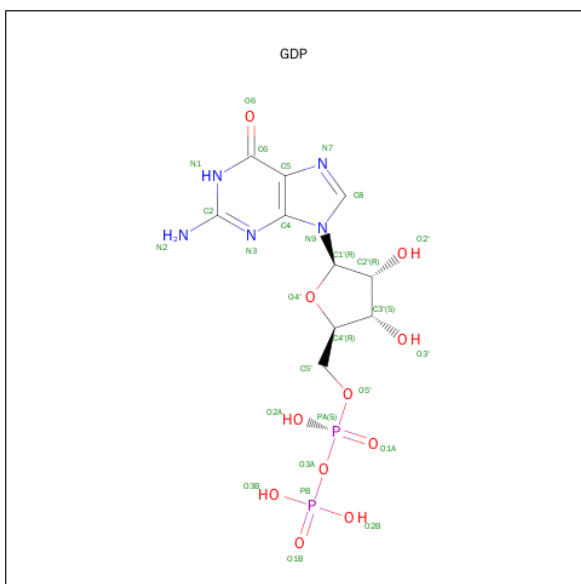
Mol	Chain	Residues	Atoms						ZeroOcc	AltConf
2	A	1	Total	C	Co	N	O	P	0	0
			91	62	1	13	14	1		
2	B	1	Total	C	Co	N	O	P	0	0
			91	62	1	13	14	1		

- Molecule 3 is 5'-DEOXYADENOSINE (three-letter code: 5AD) (formula: $C_{10}H_{13}N_5O_3$).



Mol	Chain	Residues	Atoms				ZeroOcc	AltConf
3	A	1	Total	C	N	O	0	0
			18	10	5	3		

- Molecule 4 is GUANOSINE-5'-DIPHOSPHATE (three-letter code: GDP) (formula: $C_{10}H_{15}N_5O_{11}P_2$).

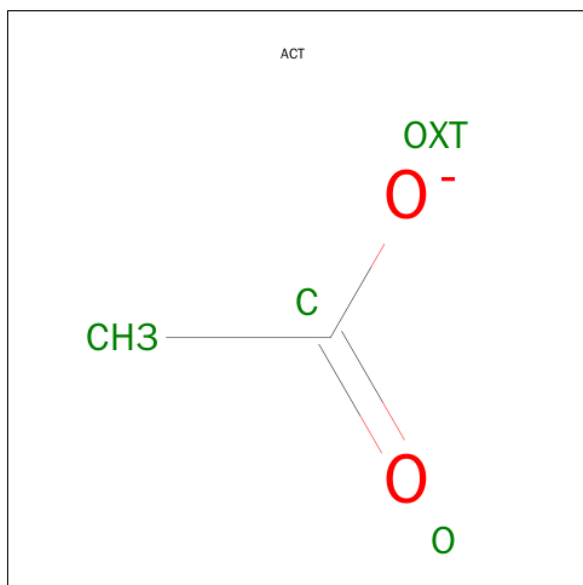


Mol	Chain	Residues	Atoms					ZeroOcc	AltConf
4	A	1	Total	C	N	O	P	0	0
			28	10	5	11	2		
4	B	1	Total	C	N	O	P	0	0
			28	10	5	11	2		

- Molecule 5 is MAGNESIUM ION (three-letter code: MG) (formula: Mg).

Mol	Chain	Residues	Atoms		ZeroOcc	AltConf
5	B	2	Total	Mg	0	0
			2	2		
5	A	2	Total	Mg	0	0
			2	2		

- Molecule 6 is ACETATE ION (three-letter code: ACT) (formula: C₂H₃O₂).

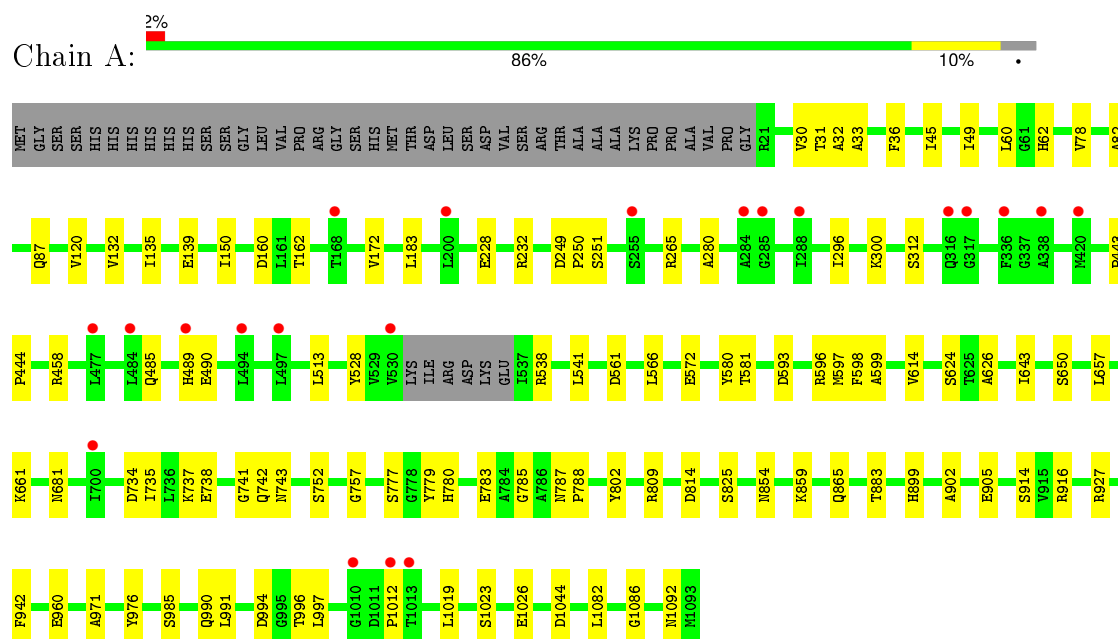


Mol	Chain	Residues	Atoms			ZeroOcc	AltConf
6	A	1	Total	C	O	0	0
			4	2	2		

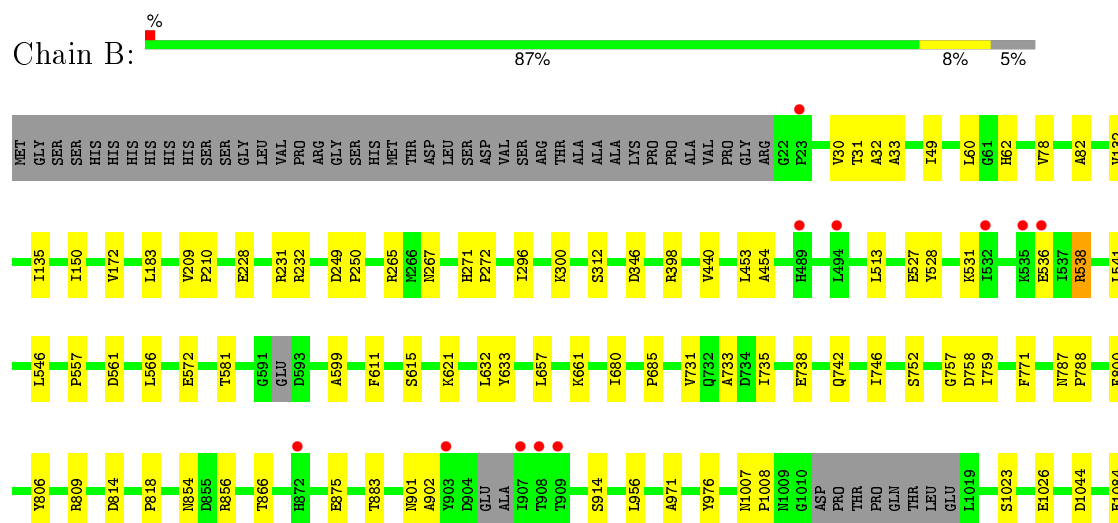
3 Residue-property plots

These plots are drawn for all protein, RNA and DNA chains in the entry. The first graphic for a chain summarises the proportions of errors displayed in the second graphic. The second graphic shows the sequence view annotated by issues in geometry and electron density. Residues are color-coded according to the number of geometric quality criteria for which they contain at least one outlier: green = 0, yellow = 1, orange = 2 and red = 3 or more. A red dot above a residue indicates a poor fit to the electron density ($RSRZ > 2$). Stretches of 2 or more consecutive residues without any outlier are shown as a green connector. Residues present in the sample, but not in the model, are shown in grey.

• Molecule 1: Isobutyryl-CoA mutase fused



• Molecule 1: Isobutyryl-CoA mutase fused





4 Data and refinement statistics

Property	Value	Source
Space group	H 3 2	Depositor
Cell constants a, b, c, α , β , γ	318.76 Å 318.76 Å 343.52 Å 90.00° 90.00° 120.00°	Depositor
Resolution (Å)	48.69 – 3.35 49.92 – 3.35	Depositor EDS
% Data completeness (in resolution range)	99.2 (48.69-3.35) 99.2 (49.92-3.35)	Depositor EDS
R_{merge}	(Not available)	Depositor
R_{sym}	0.13	Depositor
$\langle I/\sigma(I) \rangle$ ¹	2.41 (at 3.33 Å)	Xtriage
Refinement program	PHENIX (phenix.refine: dev_1760)	Depositor
R, R_{free}	0.180 , 0.198 0.187 , 0.201	Depositor DCC
R_{free} test set	4765 reflections (5.28%)	DCC
Wilson B-factor (Å ²)	82.4	Xtriage
Anisotropy	0.259	Xtriage
Bulk solvent k_{sol} (e/Å ³), B_{sol} (Å ²)	0.32 , 46.5	EDS
Estimated twinning fraction	No twinning to report.	Xtriage
L-test for twinning ²	$\langle L \rangle = 0.48$, $\langle L^2 \rangle = 0.31$	Xtriage
Outliers	1 of 94999 reflections (0.001%)	Xtriage
F_o, F_c correlation	0.94	EDS
Total number of atoms	16546	wwPDB-VP
Average B, all atoms (Å ²)	82.0	wwPDB-VP

Xtriage's analysis on translational NCS is as follows: *The largest off-origin peak in the Patterson function is 1.96% of the height of the origin peak. No significant pseudotranslation is detected.*

¹Intensities estimated from amplitudes.

²Theoretical values of $\langle |L| \rangle$, $\langle L^2 \rangle$ for acentric reflections are 0.5, 0.375 respectively for untwinned datasets, and 0.333, 0.2 for perfectly twinned datasets.

5 Model quality [i](#)

5.1 Standard geometry [i](#)

Bond lengths and bond angles in the following residue types are not validated in this section: GDP, MG, B12, 5AD, ACT

The Z score for a bond length (or angle) is the number of standard deviations the observed value is removed from the expected value. A bond length (or angle) with $|Z| > 5$ is considered an outlier worth inspection. RMSZ is the root-mean-square of all Z scores of the bond lengths (or angles).

Mol	Chain	Bond lengths		Bond angles	
		RMSZ	$\# Z > 5$	RMSZ	$\# Z > 5$
1	A	0.22	0/8311	0.41	3/11258 (0.0%)
1	B	0.22	0/8254	0.41	3/11168 (0.0%)
All	All	0.22	0/16565	0.41	6/22426 (0.0%)

There are no bond length outliers.

All (6) bond angle outliers are listed below:

Mol	Chain	Res	Type	Atoms	Z	Observed(°)	Ideal(°)
1	B	538	ARG	NE-CZ-NH2	-12.33	114.13	120.30
1	A	538	ARG	NE-CZ-NH1	-12.32	114.14	120.30
1	A	538	ARG	NE-CZ-NH2	12.26	126.43	120.30
1	B	538	ARG	NE-CZ-NH1	11.66	126.13	120.30
1	A	538	ARG	CD-NE-CZ	6.21	132.29	123.60
1	B	538	ARG	CD-NE-CZ	5.81	131.74	123.60

There are no chirality outliers.

There are no planarity outliers.

5.2 Too-close contacts [i](#)

In the following table, the Non-H and H(model) columns list the number of non-hydrogen atoms and hydrogen atoms in the chain respectively. The H(added) column lists the number of hydrogen atoms added and optimized by MolProbity. The Clashes column lists the number of clashes within the asymmetric unit, whereas Symm-Clashes lists symmetry related clashes.

Mol	Chain	Non-H	H(model)	H(added)	Clashes	Symm-Clashes
1	A	8166	0	7934	58	0
1	B	8116	0	7884	48	0
2	A	91	0	88	8	0

Continued on next page...

Continued from previous page...

Mol	Chain	Non-H	H(model)	H(added)	Clashes	Symm-Clashes
2	B	91	0	88	4	0
3	A	18	0	13	1	0
4	A	28	0	12	1	0
4	B	28	0	12	1	0
5	A	2	0	0	0	0
5	B	2	0	0	0	0
6	A	4	0	3	0	0
All	All	16546	0	16034	109	0

The all-atom clashscore is defined as the number of clashes found per 1000 atoms (including hydrogen atoms). The all-atom clashscore for this structure is 3.

All (109) close contacts within the same asymmetric unit are listed below, sorted by their clash magnitude.

Atom-1	Atom-2	Interatomic distance (Å)	Clash overlap (Å)
1:A:783:GLU:HB3	2:A:1101:B12:H532	1.64	0.78
1:A:87:GLN:HE22	2:A:1101:B12:H421	1.52	0.74
1:B:454:ALA:HA	1:B:956:LEU:HD22	1.80	0.63
1:A:31:THR:HG22	1:A:82:ALA:HB3	1.81	0.62
1:B:31:THR:HG22	1:B:82:ALA:HB3	1.82	0.61
1:A:735:ILE:HG13	1:A:752:SER:HB3	1.83	0.60
1:B:615:SER:O	1:B:621:LYS:NZ	2.37	0.57
1:A:990:GLN:O	1:A:994:ASP:HB2	2.04	0.56
1:A:251:SER:HB2	1:A:280:ALA:HB1	1.87	0.56
1:A:599:ALA:O	1:A:626:ALA:N	2.37	0.55
1:A:942:PHE:CZ	1:B:557:PRO:HB3	2.42	0.55
1:B:265:ARG:NH1	4:B:1102:GDP:O2A	2.40	0.55
1:A:265:ARG:NH1	4:A:1103:GDP:O1A	2.41	0.54
1:A:779:TYR:CD2	1:A:825:SER:HB2	2.43	0.54
1:A:737:LYS:HD3	1:A:777:SER:HB2	1.90	0.54
1:A:250:PRO:HD3	1:A:312:SER:HB2	1.89	0.54
1:A:458:ARG:NH1	1:A:960:GLU:OE2	2.40	0.54
1:A:991:LEU:HD22	1:A:996:THR:HB	1.91	0.53
1:A:916:ARG:NH1	1:B:875:GLU:OE2	2.40	0.53
1:A:780:HIS:HA	2:A:1101:B12:H461	1.90	0.53
1:A:62:HIS:CE1	1:A:743:ASN:HB3	2.44	0.53
1:A:787:ASN:HB2	1:A:788:PRO:HD2	1.91	0.53
1:B:30:VAL:HG23	1:B:78:VAL:HG11	1.91	0.52
1:A:30:VAL:HG23	1:A:78:VAL:HG11	1.91	0.52
1:B:513:LEU:HD21	1:B:566:LEU:HB2	1.91	0.52
1:A:513:LEU:HD21	1:A:566:LEU:HB2	1.91	0.51

Continued on next page...

Continued from previous page...

Atom-1	Atom-2	Interatomic distance (Å)	Clash overlap (Å)
1:A:596:ARG:HG2	1:A:624:SER:HB2	1.91	0.51
1:A:561:ASP:HB2	1:B:561:ASP:HB2	1.92	0.51
1:B:250:PRO:HD3	1:B:312:SER:HB2	1.92	0.51
1:A:865:GLN:HG3	1:A:899:HIS:HD2	1.75	0.51
1:B:787:ASN:HB2	1:B:788:PRO:HD2	1.92	0.50
1:A:1082:LEU:O	1:A:1086:GLY:N	2.42	0.50
1:A:33:ALA:HB3	1:A:62:HIS:HA	1.94	0.50
1:A:296:ILE:O	1:A:300:LYS:HG3	2.11	0.50
1:B:33:ALA:HB3	1:B:62:HIS:HA	1.94	0.50
1:B:818:PRO:HB3	1:B:856:ARG:HG2	1.94	0.50
1:B:296:ILE:O	1:B:300:LYS:HG3	2.12	0.50
1:A:593:ASP:OD2	1:A:927:ARG:NH2	2.41	0.49
1:B:735:ILE:HD12	1:B:752:SER:HB3	1.93	0.49
1:B:32:ALA:HB2	1:B:60:LEU:HB2	1.95	0.48
1:A:32:ALA:HB2	1:A:60:LEU:HB2	1.96	0.48
1:A:814:ASP:CG	1:A:854:ASN:HD22	2.17	0.48
1:A:905:GLU:O	2:A:1101:B12:N29	2.34	0.48
2:A:1101:B12:H261	3:A:1102:5AD:H3'	1.96	0.47
1:A:650:SER:HB3	2:A:1101:B12:H353	1.97	0.47
1:A:681:ASN:ND2	1:A:742:GLN:OE1	2.47	0.47
1:A:485:GLN:HG2	1:A:490:GLU:HG2	1.96	0.47
1:B:599:ALA:HB3	1:B:611:PHE:CE1	2.50	0.47
1:B:814:ASP:CG	1:B:854:ASN:HD22	2.17	0.46
1:A:139:GLU:HG3	1:A:1012:PRO:HG3	1.96	0.46
1:B:231:ARG:NH2	1:B:1084:GLU:HA	2.31	0.46
1:A:757:GLY:HA3	1:A:809:ARG:NH1	2.30	0.46
1:B:228:GLU:OE2	1:B:232:ARG:NH1	2.49	0.46
1:B:132:VAL:HG11	1:B:135:ILE:HG13	1.99	0.45
1:A:49:ILE:HB	1:A:150:ILE:HG13	1.99	0.45
1:A:228:GLU:OE2	1:A:232:ARG:NH1	2.49	0.45
1:B:757:GLY:HA2	1:B:806:TYR:HE1	1.82	0.45
1:A:902:ALA:HB1	1:A:914:SER:OG	2.16	0.45
1:A:132:VAL:HG11	1:A:135:ILE:HG13	1.99	0.45
1:B:902:ALA:HB1	1:B:914:SER:OG	2.16	0.45
1:A:735:ILE:HA	1:A:738:GLU:HG2	1.99	0.44
1:A:597:MET:HB2	1:A:614:VAL:HG11	1.99	0.44
1:A:734:ASP:HB3	1:A:737:LYS:HZ2	1.83	0.44
1:B:572:GLU:HG2	1:B:581:THR:HG21	2.00	0.44
1:A:737:LYS:HE3	1:A:780:HIS:CE1	2.52	0.44
1:B:971:ALA:HB1	1:B:976:TYR:HB3	2.00	0.44
1:A:572:GLU:HG2	1:A:581:THR:HG21	2.00	0.44

Continued on next page...

Continued from previous page...

Atom-1	Atom-2	Interatomic distance (Å)	Clash overlap (Å)
1:A:160:ASP:OD1	1:A:162:THR:OG1	2.25	0.43
1:A:580:TYR:CE1	1:A:859:LYS:HE2	2.53	0.43
1:B:738:GLU:OE1	1:B:742:GLN:NE2	2.51	0.43
2:A:1101:B12:H252	2:A:1101:B12:H601	2.00	0.43
1:B:172:VAL:HG21	1:B:183:LEU:HD22	2.00	0.43
1:B:49:ILE:HB	1:B:150:ILE:HG13	1.99	0.43
1:A:785:GLY:HA3	1:A:985:SER:HB2	2.00	0.42
1:A:971:ALA:HB1	1:A:976:TYR:HB3	2.00	0.42
1:B:731:VAL:HG23	1:B:771:PHE:CE1	2.54	0.42
1:A:172:VAL:HG21	1:A:183:LEU:HD22	2.00	0.42
1:A:120:VAL:HG11	1:A:1019:LEU:HD11	2.01	0.42
2:B:1101:B12:H253	2:B:1101:B12:H301	1.69	0.42
2:A:1101:B12:H552	2:A:1101:B12:H531	2.02	0.42
1:B:531:LYS:HA	1:B:536:GLU:HA	2.01	0.41
1:B:633:TYR:HD2	1:B:746:ILE:HD13	1.85	0.41
1:B:758:ASP:OD1	1:B:809:ARG:NH2	2.41	0.41
1:B:453:LEU:HD13	1:B:800:PHE:CD2	2.56	0.41
2:B:1101:B12:H601	2:B:1101:B12:H262	2.03	0.41
1:B:1023:SER:HB3	1:B:1026:GLU:HG3	2.02	0.41
1:A:36:PHE:HE2	1:A:643:ILE:HG23	1.86	0.41
1:B:398:ARG:NH1	1:B:440:VAL:HA	2.36	0.41
1:B:528:TYR:HB2	1:B:541:LEU:HD21	2.02	0.41
1:B:209:VAL:HA	1:B:210:PRO:HD3	1.89	0.41
1:B:527:GLU:OE2	1:B:538:ARG:NH1	2.44	0.41
1:A:734:ASP:OD1	1:A:802:TYR:OH	2.29	0.41
1:B:731:VAL:O	1:B:733:ALA:N	2.54	0.41
1:A:997:LEU:HD22	1:B:546:LEU:HD11	2.02	0.41
1:B:267:ASN:HD21	1:B:1090:ARG:HA	1.86	0.41
1:B:657:LEU:HG	1:B:661:LYS:HE3	2.03	0.41
1:A:1023:SER:HB3	1:A:1026:GLU:HG3	2.02	0.41
1:A:528:TYR:HB2	1:A:541:LEU:HD21	2.03	0.41
1:B:271:HIS:CG	1:B:272:PRO:HD2	2.56	0.41
1:B:632:LEU:HD23	1:B:680:ILE:HD12	2.04	0.40
1:A:443:PRO:HA	1:A:444:PRO:HD3	1.89	0.40
2:B:1101:B12:H531	2:B:1101:B12:H552	2.03	0.40
2:B:1101:B12:H353	2:B:1101:B12:H311	2.04	0.40
1:B:866:THR:O	1:B:901:ASN:ND2	2.55	0.40
1:A:657:LEU:HG	1:A:661:LYS:HE3	2.02	0.40
1:A:45:ILE:O	1:A:49:ILE:HG12	2.22	0.40
1:B:731:VAL:HG23	1:B:771:PHE:HE1	1.86	0.40
1:B:685:PRO:HB3	1:B:759:ILE:HD11	2.03	0.40

Continued on next page...

Continued from previous page...

Atom-1	Atom-2	Interatomic distance (Å)	Clash overlap (Å)
1:B:1007:ASN:HA	1:B:1008:PRO:HD2	1.94	0.40

There are no symmetry-related clashes.

5.3 Torsion angles [i](#)

5.3.1 Protein backbone [i](#)

In the following table, the Percentiles column shows the percent Ramachandran outliers of the chain as a percentile score with respect to all X-ray entries followed by that with respect to entries of similar resolution.

The Analysed column shows the number of residues for which the backbone conformation was analysed, and the total number of residues.

Mol	Chain	Analysed	Favoured	Allowed	Outliers	Percentiles	
1	A	1063/1113 (96%)	1015 (96%)	47 (4%)	1 (0%)	56	89
1	B	1053/1113 (95%)	1015 (96%)	38 (4%)	0	100	100
All	All	2116/2226 (95%)	2030 (96%)	85 (4%)	1 (0%)	100	100

All (1) Ramachandran outliers are listed below:

Mol	Chain	Res	Type
1	A	741	GLY

5.3.2 Protein sidechains [i](#)

In the following table, the Percentiles column shows the percent sidechain outliers of the chain as a percentile score with respect to all X-ray entries followed by that with respect to entries of similar resolution.

The Analysed column shows the number of residues for which the sidechain conformation was analysed, and the total number of residues.

Mol	Chain	Analysed	Rotameric	Outliers	Percentiles	
1	A	836/906 (92%)	830 (99%)	6 (1%)	88	95
1	B	826/906 (91%)	822 (100%)	4 (0%)	92	96
All	All	1662/1812 (92%)	1652 (99%)	10 (1%)	90	96

All (10) residues with a non-rotameric sidechain are listed below:

Mol	Chain	Res	Type
1	A	249	ASP
1	A	489	HIS
1	A	598	PHE
1	A	883	THR
1	A	1044	ASP
1	A	1092	ASN
1	B	249	ASP
1	B	346	ASP
1	B	883	THR
1	B	1044	ASP

Some sidechains can be flipped to improve hydrogen bonding and reduce clashes. All (1) such sidechains are listed below:

Mol	Chain	Res	Type
1	A	865	GLN

5.3.3 RNA [i](#)

There are no RNA molecules in this entry.

5.4 Non-standard residues in protein, DNA, RNA chains [i](#)

There are no non-standard protein/DNA/RNA residues in this entry.

5.5 Carbohydrates [i](#)

There are no carbohydrates in this entry.

5.6 Ligand geometry [i](#)

Of 10 ligands modelled in this entry, 4 are monoatomic - leaving 6 for Mogul analysis.

In the following table, the Counts columns list the number of bonds (or angles) for which Mogul statistics could be retrieved, the number of bonds (or angles) that are observed in the model and the number of bonds (or angles) that are defined in the chemical component dictionary. The Link column lists molecule types, if any, to which the group is linked. The Z score for a bond length (or angle) is the number of standard deviations the observed value is removed from the expected value. A bond length (or angle) with $|Z| > 2$ is considered an outlier worth inspection. RMSZ is the root-mean-square of all Z scores of the bond lengths (or angles).

Mol	Type	Chain	Res	Link	Bond lengths			Bond angles		
					Counts	RMSZ	# Z > 2	Counts	RMSZ	# Z > 2
2	B12	A	1101	1	74,101,101	0.61	2 (2%)	111,166,166	1.26	11 (9%)
3	5AD	A	1102	-	15,20,20	0.62	0	14,30,30	0.43	0
4	GDP	A	1103	5	23,30,30	2.54	8 (34%)	30,47,47	1.61	8 (26%)
6	ACT	A	1106	-	1,3,3	1.31	0	0,3,3	0.00	-
2	B12	B	1101	1	74,101,101	0.57	2 (2%)	111,166,166	1.31	11 (9%)
4	GDP	B	1102	5	23,30,30	2.56	8 (34%)	30,47,47	1.63	8 (26%)

In the following table, the Chirals column lists the number of chiral outliers, the number of chiral centers analysed, the number of these observed in the model and the number defined in the chemical component dictionary. Similar counts are reported in the Torsion and Rings columns. '-' means no outliers of that kind were identified.

Mol	Type	Chain	Res	Link	Chirals	Torsions	Rings
2	B12	A	1101	1	-	0/51/223/223	0/3/11/11
3	5AD	A	1102	-	-	0/0/20/20	0/3/3/3
4	GDP	A	1103	5	-	0/12/32/32	0/3/3/3
6	ACT	A	1106	-	-	0/0/0/0	0/0/0/0
2	B12	B	1101	1	-	0/51/223/223	0/3/11/11
4	GDP	B	1102	5	-	0/12/32/32	0/3/3/3

All (20) bond length outliers are listed below:

Mol	Chain	Res	Type	Atoms	Z	Observed(Å)	Ideal(Å)
4	A	1103	GDP	C2-N1	-4.06	1.28	1.35
4	B	1102	GDP	C2-N1	-3.97	1.28	1.35
4	A	1103	GDP	O5'-C5'	-3.66	1.29	1.44
4	B	1102	GDP	O5'-C5'	-3.65	1.29	1.44
4	A	1103	GDP	C5-C4	-3.26	1.33	1.40
4	B	1102	GDP	C5-C4	-3.22	1.33	1.40
4	B	1102	GDP	PA-O2A	-2.83	1.42	1.54
4	B	1102	GDP	C2'-C3'	-2.76	1.45	1.53
4	A	1103	GDP	C2'-C3'	-2.64	1.46	1.53
4	B	1102	GDP	PB-O3B	-2.28	1.46	1.54
4	A	1103	GDP	PA-O1A	-2.24	1.43	1.51
4	A	1103	GDP	PB-O3B	-2.22	1.46	1.54
2	B	1101	B12	P-O5	2.09	1.53	1.48
2	A	1101	B12	P-O5	2.14	1.53	1.48
2	A	1101	B12	C1P-C2P	2.28	1.57	1.51
2	B	1101	B12	C1P-C2P	2.29	1.57	1.51
4	A	1103	GDP	O6-C6	5.15	1.37	1.24
4	B	1102	GDP	O6-C6	5.16	1.37	1.24

Continued on next page...

Continued from previous page...

Mol	Chain	Res	Type	Atoms	Z	Observed(Å)	Ideal(Å)
4	B	1102	GDP	C2-N2	6.92	1.48	1.34
4	A	1103	GDP	C2-N2	6.96	1.48	1.34

All (38) bond angle outliers are listed below:

Mol	Chain	Res	Type	Atoms	Z	Observed(°)	Ideal(°)
2	A	1101	B12	C30-C3-C2	-3.77	111.66	119.11
4	B	1102	GDP	N3-C2-N1	-3.77	121.71	127.44
4	A	1103	GDP	N3-C2-N1	-3.76	121.72	127.44
2	B	1101	B12	C35-C5-C4	-3.41	112.15	118.25
2	B	1101	B12	C30-C3-C2	-3.39	112.41	119.11
2	B	1101	B12	C9-C10-C11	-3.26	124.11	132.28
2	A	1101	B12	C9-C10-C11	-3.24	124.15	132.28
2	A	1101	B12	C35-C5-C4	-3.12	112.66	118.25
4	A	1103	GDP	PA-O3A-PB	-3.08	122.33	132.67
4	B	1102	GDP	PA-O3A-PB	-3.03	122.50	132.67
4	B	1102	GDP	C5-C6-N1	-2.90	119.62	123.59
2	A	1101	B12	C13-C14-C15	-2.78	122.49	131.88
2	B	1101	B12	C13-C14-C15	-2.76	122.56	131.88
4	A	1103	GDP	C5-C6-N1	-2.75	119.83	123.59
2	A	1101	B12	C3-C4-C5	-2.69	122.80	131.88
2	B	1101	B12	C3-C4-C5	-2.67	122.85	131.88
4	A	1103	GDP	C4'-O4'-C1'	-2.60	106.86	109.72
4	B	1102	GDP	C4'-O4'-C1'	-2.39	107.09	109.72
2	A	1101	B12	C20-C1-C19	-2.37	107.06	109.38
4	A	1103	GDP	C6-C5-C4	-2.28	118.17	120.90
4	B	1102	GDP	C4-C5-N7	-2.26	107.40	109.48
2	B	1101	B12	C55-C17-C18	-2.18	106.60	110.97
4	B	1102	GDP	C6-C5-C4	-2.11	118.38	120.90
2	B	1101	B12	C20-C1-C19	-2.06	107.36	109.38
4	A	1103	GDP	C4-C5-N7	-2.04	107.61	109.48
2	B	1101	B12	C55-C56-C57	-2.03	106.95	111.06
2	A	1101	B12	O3-P-O4	2.07	115.81	108.69
4	A	1103	GDP	O3A-PA-O5'	2.11	108.53	102.94
2	A	1101	B12	P-O2-C3R	2.11	126.33	120.07
2	B	1101	B12	O3-P-O4	2.20	116.22	108.69
4	B	1102	GDP	O3A-PA-O5'	2.25	108.89	102.94
4	A	1103	GDP	C6-N1-C2	2.99	120.09	115.94
4	B	1102	GDP	C6-N1-C2	3.05	120.17	115.94
2	A	1101	B12	C19-C1-N21	3.28	105.49	102.16
2	A	1101	B12	C35-C5-C6	3.66	124.81	118.25
2	B	1101	B12	C35-C5-C6	4.44	126.20	118.25

Continued on next page...

Continued from previous page...

Mol	Chain	Res	Type	Atoms	Z	Observed(°)	Ideal(°)
2	A	1101	B12	P-O3-C2P	5.30	127.87	120.92
2	B	1101	B12	P-O3-C2P	5.82	128.56	120.92

There are no chirality outliers.

There are no torsion outliers.

There are no ring outliers.

5 monomers are involved in 14 short contacts:

Mol	Chain	Res	Type	Clashes	Symm-Clashes
2	A	1101	B12	8	0
3	A	1102	5AD	1	0
4	A	1103	GDP	1	0
2	B	1101	B12	4	0
4	B	1102	GDP	1	0

5.7 Other polymers [i](#)

There are no such residues in this entry.

5.8 Polymer linkage issues [i](#)

There are no chain breaks in this entry.

6 Fit of model and data ⓘ

6.1 Protein, DNA and RNA chains ⓘ

In the following table, the column labelled ‘#RSRZ> 2’ contains the number (and percentage) of RSRZ outliers, followed by percent RSRZ outliers for the chain as percentile scores relative to all X-ray entries and entries of similar resolution. The OWAB column contains the minimum, median, 95th percentile and maximum values of the occupancy-weighted average B-factor per residue. The column labelled ‘Q< 0.9’ lists the number of (and percentage) of residues with an average occupancy less than 0.9.

Mol	Chain	Analysed	<RSRZ>	#RSRZ>2	OWAB(Å ²)	Q<0.9
1	A	1067/1113 (95%)	-0.04	21 (1%) 68 68	53, 81, 130, 204	0
1	B	1061/1113 (95%)	-0.14	11 (1%) 84 85	51, 74, 124, 185	0
All	All	2128/2226 (95%)	-0.09	32 (1%) 76 77	51, 78, 129, 204	0

All (32) RSRZ outliers are listed below:

Mol	Chain	Res	Type	RSRZ
1	A	489	HIS	3.9
1	A	1013	THR	3.8
1	A	316	GLN	3.5
1	A	1012	PRO	3.4
1	B	909	THR	3.3
1	B	536	GLU	3.1
1	A	484	LEU	3.0
1	B	494	LEU	3.0
1	B	908	THR	3.0
1	B	489	HIS	2.9
1	A	494	LEU	2.8
1	A	317	GLY	2.6
1	A	288	ILE	2.6
1	A	530	VAL	2.6
1	B	535	LYS	2.5
1	A	1010	GLY	2.5
1	B	903	TYR	2.5
1	A	284	ALA	2.4
1	A	336	PHE	2.2
1	A	285	GLY	2.2
1	A	168	THR	2.2
1	B	23	PRO	2.2
1	A	200	LEU	2.2
1	B	872	HIS	2.2

Continued on next page...

Continued from previous page...

Mol	Chain	Res	Type	RSRZ
1	A	497	LEU	2.2
1	A	700	ILE	2.1
1	A	420	MET	2.1
1	B	907	ILE	2.1
1	A	255	SER	2.0
1	A	338	ALA	2.0
1	B	532	ILE	2.0
1	A	477	LEU	2.0

6.2 Non-standard residues in protein, DNA, RNA chains [i](#)

There are no non-standard protein/DNA/RNA residues in this entry.

6.3 Carbohydrates [i](#)

There are no carbohydrates in this entry.

6.4 Ligands [i](#)

In the following table, the Atoms column lists the number of modelled atoms in the group and the number defined in the chemical component dictionary. LLDF column lists the quality of electron density of the group with respect to its neighbouring residues in protein, DNA or RNA chains. The B-factors column lists the minimum, median, 95th percentile and maximum values of B factors of atoms in the group. The column labelled 'Q< 0.9' lists the number of atoms with occupancy less than 0.9.

Mol	Type	Chain	Res	Atoms	RSCC	RSR	LLDF	B-factors(\AA^2)	Q<0.9
5	MG	B	1103	1/1	0.98	0.36	3.45	39,39,39,39	0
3	5AD	A	1102	18/18	0.92	0.26	2.39	96,104,106,108	0
5	MG	B	1104	1/1	0.99	0.27	1.06	38,38,38,38	0
4	GDP	B	1102	28/28	0.97	0.23	0.43	51,60,76,79	0
5	MG	A	1104	1/1	0.99	0.21	0.24	60,60,60,60	0
2	B12	A	1101	91/91	0.97	0.20	-0.12	45,62,77,80	0
2	B12	B	1101	91/91	0.93	0.24	-0.23	78,98,125,134	0
5	MG	A	1105	1/1	0.93	0.18	-0.33	73,73,73,73	0
4	GDP	A	1103	28/28	0.97	0.15	-0.81	65,79,84,87	0
6	ACT	A	1106	4/4	0.88	0.25	-	83,85,86,88	0

6.5 Other polymers [i](#)

There are no such residues in this entry.