



# wwPDB X-ray Structure Validation Summary Report ⓘ

Feb 1, 2016 – 06:35 AM GMT

PDB ID : 2XLU  
Title : JOINT-FUNCTIONS OF PROTEIN RESIDUES AND NADP(H) IN  
OXYGEN-ACTIVATION BY FLAVIN-CONTAINING MONOOXYGE-  
NASE: COMPLEX WITH THIONADP  
Authors : Orru, R.; Fraaije, M.W.; Mattevi, A.  
Deposited on : 2010-07-21  
Resolution : 2.60 Å(reported)

This is a wwPDB X-ray Structure Validation Summary Report for a publicly released PDB entry.  
We welcome your comments at [validation@mail.wwpdb.org](mailto:validation@mail.wwpdb.org)  
A user guide is available at  
<http://wwpdb.org/validation/2016/XrayValidationReportHelp>  
with specific help available everywhere you see the ⓘ symbol.

---

The following versions of software and data (see [references ⓘ](#)) were used in the production of this report:

MolProbity : 4.02b-467  
Mogul : 1.7 (RC4), CSD as536be (2015)  
Xtriage (Phenix) : 1.9-1692  
EDS : rb-20026688  
Percentile statistics : 20151230.v01 (using entries in the PDB archive December 30th 2015)  
Refmac : 5.8.0135  
CCP4 : 6.5.0  
Ideal geometry (proteins) : Engh & Huber (2001)  
Ideal geometry (DNA, RNA) : Parkinson et al. (1996)  
Validation Pipeline (wwPDB-VP) : trunk26865

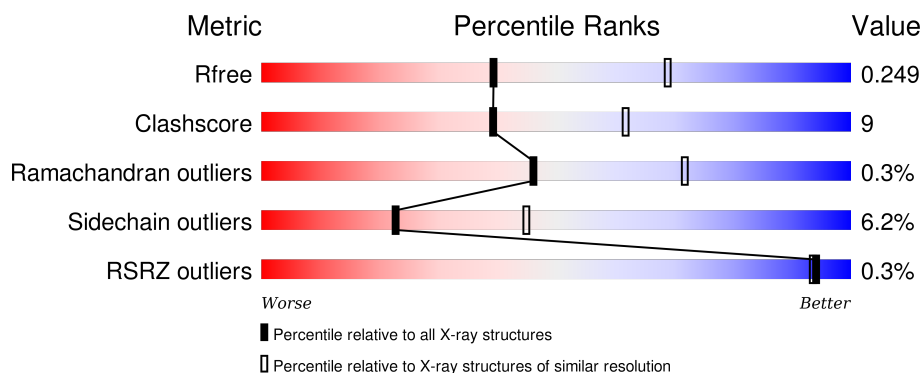
# 1 Overall quality at a glance

The following experimental techniques were used to determine the structure:

## *X-RAY DIFFRACTION*

The reported resolution of this entry is 2.60 Å.

Percentile scores (ranging between 0-100) for global validation metrics of the entry are shown in the following graphic. The table shows the number of entries on which the scores are based.



Metric	Whole archive (#Entries)	Similar resolution (#Entries, resolution range(Å))
$R_{free}$	91344	2328 (2.60-2.60)
Clashscore	102246	2679 (2.60-2.60)
Ramachandran outliers	100387	2635 (2.60-2.60)
Sidechain outliers	100360	2635 (2.60-2.60)
RSRZ outliers	91569	2334 (2.60-2.60)

The table below summarises the geometric issues observed across the polymeric chains and their fit to the electron density. The red, orange, yellow and green segments on the lower bar indicate the fraction of residues that contain outliers for  $\geq 3$ , 2, 1 and 0 types of geometric quality criteria. A grey segment represents the fraction of residues that are not modelled. The numeric value for each fraction is indicated below the corresponding segment, with a dot representing fractions  $\leq 5\%$ . The upper red bar (where present) indicates the fraction of residues that have poor fit to the electron density. The numeric value is given above the bar.

Mol	Chain	Length	Quality of chain
1	A	461	 75% 18% . .
1	B	461	 73% 20% . .
1	C	461	 75% 20% . .
1	D	461	 76% 19% . .

The following table lists non-polymeric compounds, carbohydrate monomers and non-standard

residues in protein, DNA, RNA chains that are outliers for geometric or electron-density-fit criteria:

Mol	Type	Chain	Res	Chirality	Geometry	Clashes	Electron density
4	EPE	A	1452	-	-	-	X
4	EPE	D	1452	-	-	-	X
5	PEG	A	1453	-	-	X	X
5	PEG	A	1454	-	-	-	X
5	PEG	B	1452	-	-	-	X

## 2 Entry composition

There are 6 unique types of molecules in this entry. The entry contains 15487 atoms, of which 0 are hydrogens and 0 are deuteriums.

In the tables below, the ZeroOcc column contains the number of atoms modelled with zero occupancy, the AltConf column contains the number of residues with at least one atom in alternate conformation and the Trace column contains the number of residues modelled with at most 2 atoms.

- Molecule 1 is a protein called FLAVIN-CONTAINING MONOOXYGENASE.

Mol	Chain	Residues	Atoms					ZeroOcc	AltConf	Trace
1	A	446	Total	C	N	O	S	0	0	0
			3659	2347	606	685	21			
1	B	445	Total	C	N	O	S	0	0	0
			3651	2343	605	682	21			
1	C	445	Total	C	N	O	S	0	0	0
			3651	2343	605	682	21			
1	D	446	Total	C	N	O	S	0	0	0
			3659	2347	606	685	21			

There are 28 discrepancies between the modelled and reference sequences:

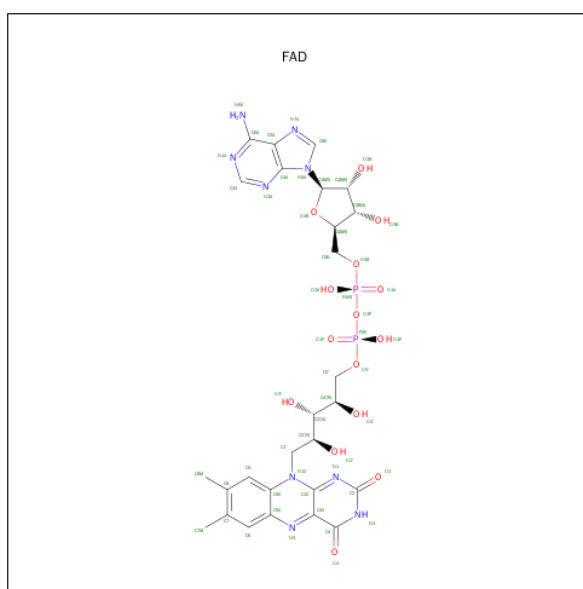
Chain	Residue	Modelled	Actual	Comment	Reference
A	1	GLY	-	EXPRESSION TAG	UNP Q83XK4
A	2	ALA	-	EXPRESSION TAG	UNP Q83XK4
A	3	MET	-	EXPRESSION TAG	UNP Q83XK4
A	4	GLY	-	EXPRESSION TAG	UNP Q83XK4
A	5	SER	-	EXPRESSION TAG	UNP Q83XK4
A	158	ALA	GLU	CONFLICT	UNP Q83XK4
A	159	ALA	GLU	CONFLICT	UNP Q83XK4
B	1	GLY	-	EXPRESSION TAG	UNP Q83XK4
B	2	ALA	-	EXPRESSION TAG	UNP Q83XK4
B	3	MET	-	EXPRESSION TAG	UNP Q83XK4
B	4	GLY	-	EXPRESSION TAG	UNP Q83XK4
B	5	SER	-	EXPRESSION TAG	UNP Q83XK4
B	158	ALA	GLU	CONFLICT	UNP Q83XK4
B	159	ALA	GLU	CONFLICT	UNP Q83XK4
C	1	GLY	-	EXPRESSION TAG	UNP Q83XK4
C	2	ALA	-	EXPRESSION TAG	UNP Q83XK4
C	3	MET	-	EXPRESSION TAG	UNP Q83XK4
C	4	GLY	-	EXPRESSION TAG	UNP Q83XK4
C	5	SER	-	EXPRESSION TAG	UNP Q83XK4
C	158	ALA	GLU	CONFLICT	UNP Q83XK4
C	159	ALA	GLU	CONFLICT	UNP Q83XK4

*Continued on next page...*

Continued from previous page...

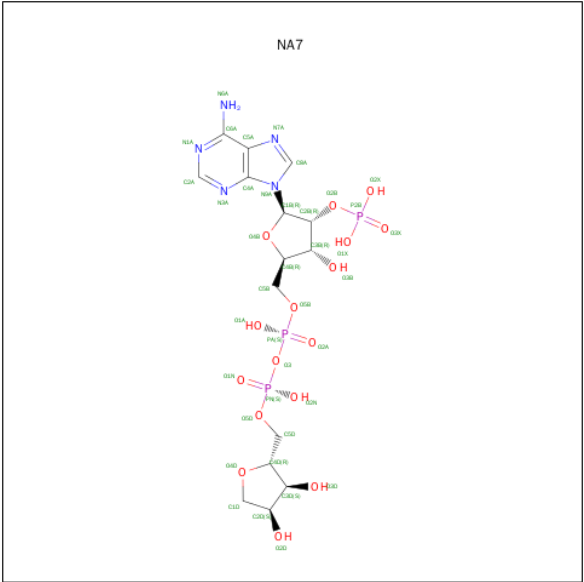
Chain	Residue	Modelled	Actual	Comment	Reference
D	1	GLY	-	EXPRESSION TAG	UNP Q83XK4
D	2	ALA	-	EXPRESSION TAG	UNP Q83XK4
D	3	MET	-	EXPRESSION TAG	UNP Q83XK4
D	4	GLY	-	EXPRESSION TAG	UNP Q83XK4
D	5	SER	-	EXPRESSION TAG	UNP Q83XK4
D	158	ALA	GLU	CONFLICT	UNP Q83XK4
D	159	ALA	GLU	CONFLICT	UNP Q83XK4

- Molecule 2 is FLAVIN-ADENINE DINUCLEOTIDE (three-letter code: FAD) (formula:  $C_{27}H_{33}N_9O_{15}P_2$ ).



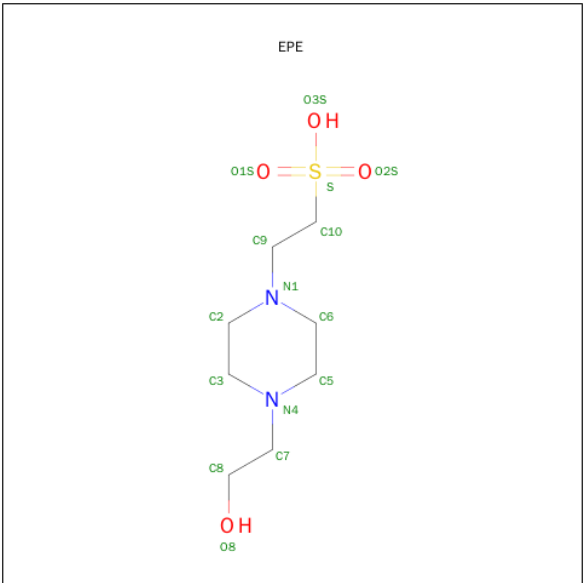
Mol	Chain	Residues	Atoms					ZeroOcc	AltConf
2	A	1	Total	C	N	O	P	0	0
			53	27	9	15	2		
2	B	1	Total	C	N	O	P	0	0
			53	27	9	15	2		
2	C	1	Total	C	N	O	P	0	0
			53	27	9	15	2		
2	D	1	Total	C	N	O	P	0	0
			53	27	9	15	2		

- Molecule 3 is [(2R,3R,4R,5R)-5-(6-AMINO-9H-PURIN-9-YL)-3-HYDROXY-4-(PHOSPHONOXY)TETRAHYDROFURAN-2-YL]METHYL [(2R,3S,4S)-3,4-DIHYDROXYTETRAHYDROFURAN-2-YL]METHYL DIHYDROGEN DIPHOSPHATE (three-letter code: NA7) (formula:  $C_{15}H_{24}N_5O_{16}P_3$ ).



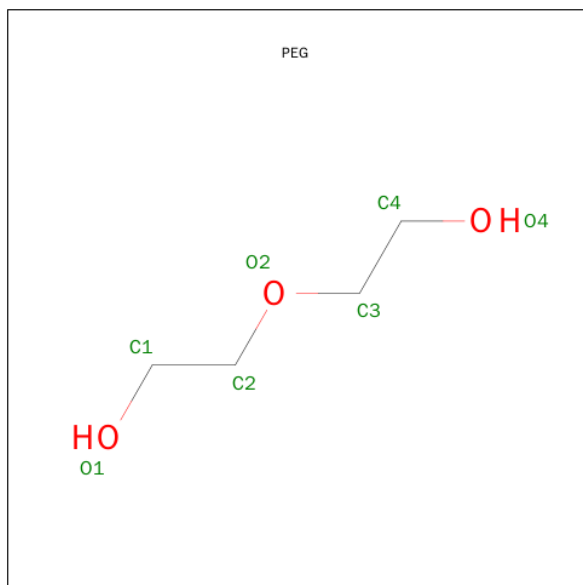
Mol	Chain	Residues	Atoms					ZeroOcc	AltConf
3	A	1	Total	C	N	O	P	0	0
			39	15	5	16	3		
3	B	1	Total	C	N	O	P	0	0
			39	15	5	16	3		
3	C	1	Total	C	N	O	P	0	0
			39	15	5	16	3		
3	D	1	Total	C	N	O	P	0	0
			39	15	5	16	3		

- Molecule 4 is 4-(2-HYDROXYETHYL)-1-PIPERAZINE ETHANESULFONIC ACID (three-letter code: EPE) (formula: C<sub>8</sub>H<sub>18</sub>N<sub>2</sub>O<sub>4</sub>S).



Mol	Chain	Residues	Atoms					ZeroOcc	AltConf
4	A	1	Total	C	N	O	S	0	0
			15	8	2	4	1		
4	D	1	Total	C	N	O	S	0	0
			15	8	2	4	1		

- Molecule 5 is DI(HYDROXYETHYL)ETHER (three-letter code: PEG) (formula: C<sub>4</sub>H<sub>10</sub>O<sub>3</sub>).



Mol	Chain	Residues	Atoms			ZeroOcc	AltConf
5	A	1	Total	C	O	0	0
			7	4	3		
5	A	1	Total	C	O	0	0
			7	4	3		
5	A	1	Total	C	O	0	0
			7	4	3		
5	B	1	Total	C	O	0	0
			7	4	3		
5	B	1	Total	C	O	0	0
			7	4	3		
5	B	1	Total	C	O	0	0
			7	4	3		

- Molecule 6 is water.

Mol	Chain	Residues	Atoms		ZeroOcc	AltConf
6	A	99	Total	O	0	0
			99	99		
6	B	121	Total	O	0	0
			121	121		

*Continued on next page...*

*Continued from previous page...*

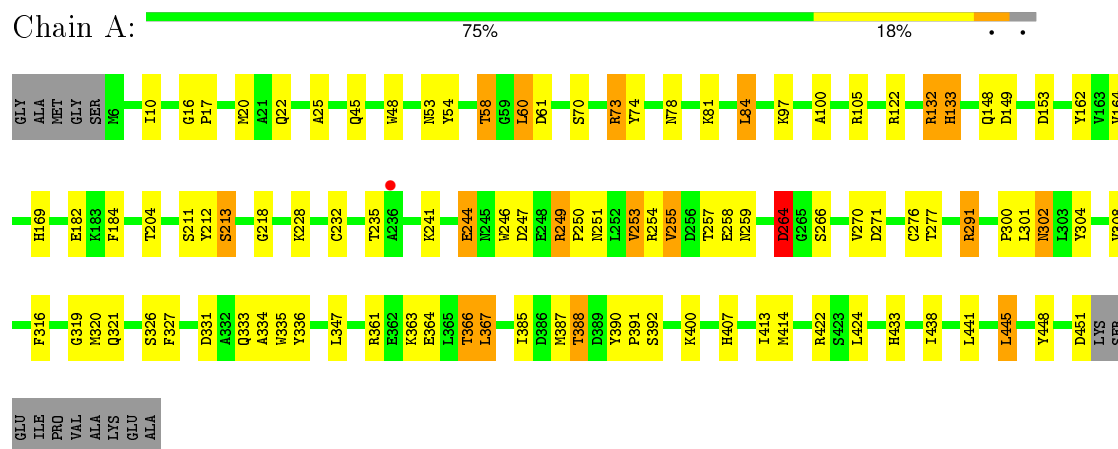
Mol	Chain	Residues	Atoms		ZeroOcc	AltConf
6	C	86	Total 86	O 86	0	0
6	D	121	Total 121	O 121	0	0



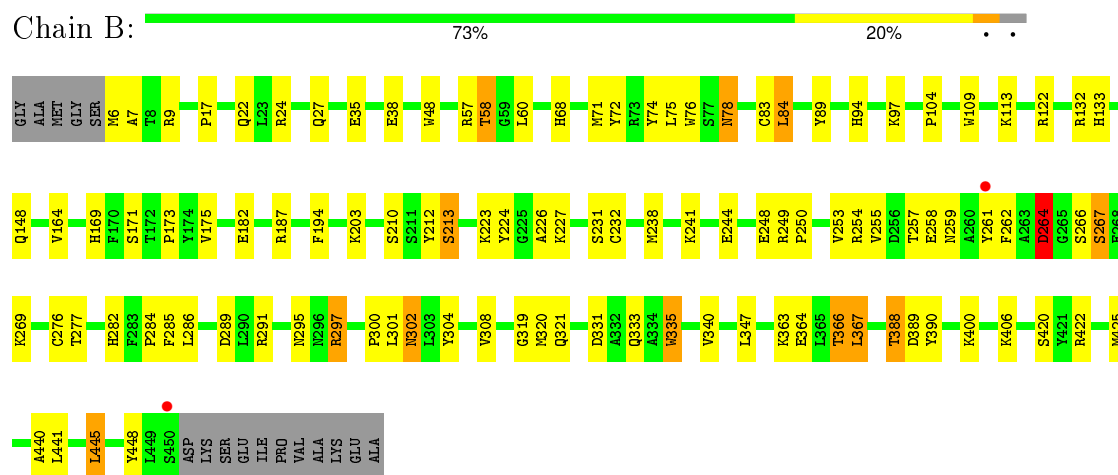
### 3 Residue-property plots

These plots are drawn for all protein, RNA and DNA chains in the entry. The first graphic for a chain summarises the proportions of errors displayed in the second graphic. The second graphic shows the sequence view annotated by issues in geometry and electron density. Residues are color-coded according to the number of geometric quality criteria for which they contain at least one outlier: green = 0, yellow = 1, orange = 2 and red = 3 or more. A red dot above a residue indicates a poor fit to the electron density ( $RSRZ > 2$ ). Stretches of 2 or more consecutive residues without any outlier are shown as a green connector. Residues present in the sample, but not in the model, are shown in grey.

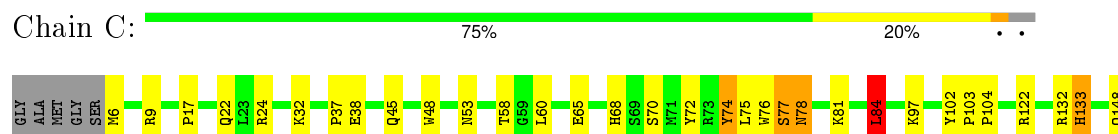
#### • Molecule 1: FLAVIN-CONTAINING MONOOXYGENASE

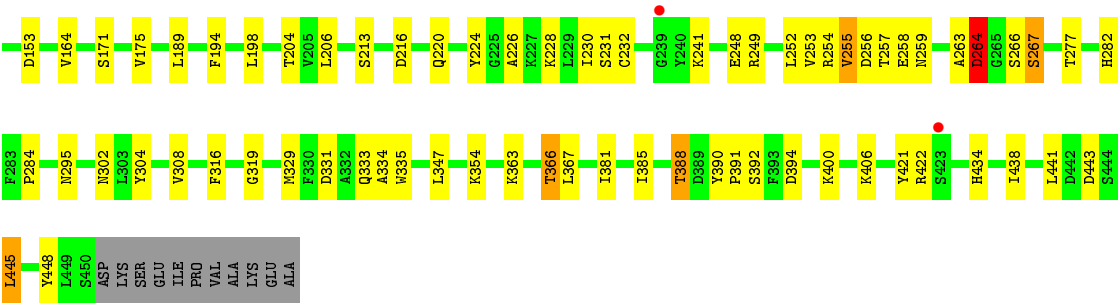


#### • Molecule 1: FLAVIN-CONTAINING MONOOXYGENASE

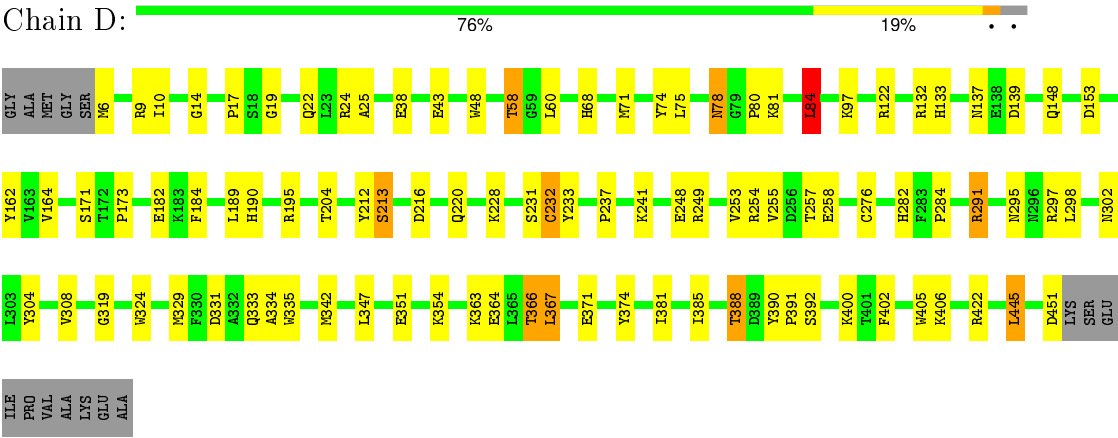


#### • Molecule 1: FLAVIN-CONTAINING MONOOXYGENASE





● Molecule 1: FLAVIN-CONTAINING MONOOXYGENASE



## 4 Data and refinement statistics

Property	Value	Source
Space group	P 61	Depositor
Cell constants a, b, c, $\alpha$ , $\beta$ , $\gamma$	220.68Å 220.68Å 130.53Å 90.00° 90.00° 120.00°	Depositor
Resolution (Å)	41.15 – 2.60 41.15 – 2.60	Depositor EDS
% Data completeness (in resolution range)	99.9 (41.15-2.60) 99.9 (41.15-2.60)	Depositor EDS
$R_{merge}$	0.12	Depositor
$R_{sym}$	(Not available)	Depositor
$\langle I/\sigma(I) \rangle$ <sup>1</sup>	3.22 (at 2.61Å)	Xtriage
Refinement program	REFMAC 5.5.0109	Depositor
R, $R_{free}$	0.210 , 0.252 0.208 , 0.249	Depositor DCC
$R_{free}$ test set	5537 reflections (5.26%)	DCC
Wilson B-factor (Å <sup>2</sup> )	33.9	Xtriage
Anisotropy	0.030	Xtriage
Bulk solvent $k_{sol}$ (e/Å <sup>3</sup> ), $B_{sol}$ (Å <sup>2</sup> )	0.32 , 28.6	EDS
Estimated twinning fraction	0.050 for h,-h-k,-l	Xtriage
L-test for twinning <sup>2</sup>	$\langle  L  \rangle = 0.45$ , $\langle L^2 \rangle = 0.28$	Xtriage
Outliers	0 of 110830 reflections	Xtriage
$F_o, F_c$ correlation	0.92	EDS
Total number of atoms	15487	wwPDB-VP
Average B, all atoms (Å <sup>2</sup> )	28.0	wwPDB-VP

Xtriage's analysis on translational NCS is as follows: *The largest off-origin peak in the Patterson function is 2.63% of the height of the origin peak. No significant pseudotranslation is detected.*

<sup>1</sup>Intensities estimated from amplitudes.

<sup>2</sup>Theoretical values of  $\langle |L| \rangle$ ,  $\langle L^2 \rangle$  for acentric reflections are 0.5, 0.375 respectively for untwinned datasets, and 0.333, 0.2 for perfectly twinned datasets.

## 5 Model quality [i](#)

### 5.1 Standard geometry [i](#)

Bond lengths and bond angles in the following residue types are not validated in this section: PEG, EPE, NA7, FAD

The Z score for a bond length (or angle) is the number of standard deviations the observed value is removed from the expected value. A bond length (or angle) with  $|Z| > 5$  is considered an outlier worth inspection. RMSZ is the root-mean-square of all Z scores of the bond lengths (or angles).

Mol	Chain	Bond lengths		Bond angles	
		RMSZ	# $ Z  > 5$	RMSZ	# $ Z  > 5$
1	A	1.02	4/3773 (0.1%)	0.96	13/5123 (0.3%)
1	B	1.01	2/3765 (0.1%)	0.94	9/5112 (0.2%)
1	C	1.04	0/3765	0.94	6/5112 (0.1%)
1	D	1.00	3/3773 (0.1%)	0.92	7/5123 (0.1%)
All	All	1.02	9/15076 (0.1%)	0.94	35/20470 (0.2%)

Chiral center outliers are detected by calculating the chiral volume of a chiral center and verifying if the center is modelled as a planar moiety or with the opposite hand. A planarity outlier is detected by checking planarity of atoms in a peptide group, atoms in a mainchain group or atoms of a sidechain that are expected to be planar.

Mol	Chain	#Chirality outliers	#Planarity outliers
1	C	0	1

The worst 5 of 9 bond length outliers are listed below:

Mol	Chain	Res	Type	Atoms	Z	Observed(Å)	Ideal(Å)
1	A	244	GLU	CG-CD	6.93	1.62	1.51
1	A	251	ASN	CB-CG	6.39	1.65	1.51
1	D	182	GLU	CG-CD	6.06	1.61	1.51
1	D	351	GLU	CG-CD	5.59	1.60	1.51
1	A	182	GLU	CG-CD	5.46	1.60	1.51

The worst 5 of 35 bond angle outliers are listed below:

Mol	Chain	Res	Type	Atoms	Z	Observed(°)	Ideal(°)
1	B	122	ARG	NE-CZ-NH1	11.66	126.13	120.30
1	C	445	LEU	CA-CB-CG	9.40	136.93	115.30
1	B	445	LEU	CA-CB-CG	8.15	134.04	115.30
1	A	445	LEU	CA-CB-CG	8.06	133.85	115.30

*Continued on next page...*

*Continued from previous page...*

Mol	Chain	Res	Type	Atoms	Z	Observed(°)	Ideal(°)
1	D	445	LEU	CA-CB-CG	7.84	133.34	115.30

There are no chirality outliers.

All (1) planarity outliers are listed below:

Mol	Chain	Res	Type	Group
1	C	263	ALA	Peptide

## 5.2 Too-close contacts [i](#)

In the following table, the Non-H and H(model) columns list the number of non-hydrogen atoms and hydrogen atoms in the chain respectively. The H(added) column lists the number of hydrogen atoms added and optimized by MolProbity. The Clashes column lists the number of clashes within the asymmetric unit, whereas Symm-Clashes lists symmetry related clashes.

Mol	Chain	Non-H	H(model)	H(added)	Clashes	Symm-Clashes
1	A	3659	0	3446	74	0
1	B	3651	0	3442	65	0
1	C	3651	0	3442	58	0
1	D	3659	0	3446	63	0
2	A	53	0	31	2	0
2	B	53	0	31	1	0
2	C	53	0	31	3	0
2	D	53	0	31	4	0
3	A	39	0	20	2	0
3	B	39	0	20	4	0
3	C	39	0	20	2	0
3	D	39	0	20	4	0
4	A	15	0	18	1	0
4	D	15	0	17	0	0
5	A	21	0	30	6	0
5	B	21	0	30	2	0
6	A	99	0	0	9	0
6	B	121	0	0	3	0
6	C	86	0	0	4	0
6	D	121	0	0	8	0
All	All	15487	0	14075	259	0

The all-atom clashscore is defined as the number of clashes found per 1000 atoms (including hydrogen atoms). The all-atom clashscore for this structure is 9.

The worst 5 of 259 close contacts within the same asymmetric unit are listed below, sorted by

their clash magnitude.

Atom-1	Atom-2	Interatomic distance (Å)	Clash overlap (Å)
1:C:264:ASP:HB3	1:C:266:SER:H	1.17	1.08
1:B:133:HIS:HD2	1:C:133:HIS:HD2	1.08	1.01
1:A:133:HIS:HD2	1:D:133:HIS:HD2	1.02	0.96
1:B:132:ARG:HH21	1:B:148:GLN:HE21	1.12	0.94
1:B:388:THR:HG22	1:B:390:TYR:H	1.33	0.94

There are no symmetry-related clashes.

## 5.3 Torsion angles [i](#)

### 5.3.1 Protein backbone [i](#)

In the following table, the Percentiles column shows the percent Ramachandran outliers of the chain as a percentile score with respect to all X-ray entries followed by that with respect to entries of similar resolution.

The Analysed column shows the number of residues for which the backbone conformation was analysed, and the total number of residues.

Mol	Chain	Analysed	Favoured	Allowed	Outliers	Percentiles	
1	A	444/461 (96%)	418 (94%)	26 (6%)	0	100	100
1	B	443/461 (96%)	416 (94%)	25 (6%)	2 (0%)	34	60
1	C	443/461 (96%)	408 (92%)	32 (7%)	3 (1%)	26	51
1	D	444/461 (96%)	421 (95%)	23 (5%)	0	100	100
All	All	1774/1844 (96%)	1663 (94%)	106 (6%)	5 (0%)	46	72

All (5) Ramachandran outliers are listed below:

Mol	Chain	Res	Type
1	B	264	ASP
1	B	267	SER
1	C	264	ASP
1	C	77	SER
1	C	267	SER

### 5.3.2 Protein sidechains [i](#)

In the following table, the Percentiles column shows the percent sidechain outliers of the chain as a percentile score with respect to all X-ray entries followed by that with respect to entries of similar resolution.

The Analysed column shows the number of residues for which the sidechain conformation was analysed, and the total number of residues.

Mol	Chain	Analysed	Rotameric	Outliers	Percentiles	
1	A	387/397 (98%)	363 (94%)	24 (6%)	23	45
1	B	386/397 (97%)	360 (93%)	26 (7%)	20	40
1	C	386/397 (97%)	360 (93%)	26 (7%)	20	40
1	D	387/397 (98%)	367 (95%)	20 (5%)	29	54
All	All	1546/1588 (97%)	1450 (94%)	96 (6%)	23	45

5 of 96 residues with a non-rotameric sidechain are listed below:

Mol	Chain	Res	Type
1	B	388	THR
1	C	74	TYR
1	D	366	THR
1	B	400	LYS
1	B	441	LEU

Some sidechains can be flipped to improve hydrogen bonding and reduce clashes. 5 of 29 such sidechains are listed below:

Mol	Chain	Res	Type
1	B	282	HIS
1	C	22	GLN
1	D	148	GLN
1	B	333	GLN
1	C	45	GLN

### 5.3.3 RNA [i](#)

There are no RNA molecules in this entry.

## 5.4 Non-standard residues in protein, DNA, RNA chains [i](#)

There are no non-standard protein/DNA/RNA residues in this entry.

## 5.5 Carbohydrates [i](#)

There are no carbohydrates in this entry.

## 5.6 Ligand geometry [i](#)

16 ligands are modelled in this entry.

In the following table, the Counts columns list the number of bonds (or angles) for which Mogul statistics could be retrieved, the number of bonds (or angles) that are observed in the model and the number of bonds (or angles) that are defined in the chemical component dictionary. The Link column lists molecule types, if any, to which the group is linked. The Z score for a bond length (or angle) is the number of standard deviations the observed value is removed from the expected value. A bond length (or angle) with  $|Z| > 2$  is considered an outlier worth inspection. RMSZ is the root-mean-square of all Z scores of the bond lengths (or angles).

Mol	Type	Chain	Res	Link	Bond lengths			Bond angles		
					Counts	RMSZ	# Z  > 2	Counts	RMSZ	# Z  > 2
4	EPE	A	1452	-	14,15,15	0.63	0	18,20,20	2.96	8 (44%)
5	PEG	A	1453	-	6,6,6	0.51	0	5,5,5	1.84	1 (20%)
5	PEG	A	1454	-	6,6,6	0.89	0	5,5,5	1.11	0
5	PEG	A	1455	-	6,6,6	0.62	0	5,5,5	0.67	0
2	FAD	A	500	-	48,58,58	1.22	4 (8%)	54,89,89	2.55	14 (25%)
3	NA7	A	501	-	35,42,42	1.34	7 (20%)	46,65,65	2.70	16 (34%)
5	PEG	B	1451	-	6,6,6	1.01	0	5,5,5	0.75	0
5	PEG	B	1452	-	6,6,6	0.83	0	5,5,5	0.70	0
5	PEG	B	1453	-	6,6,6	0.57	0	5,5,5	0.66	0
2	FAD	B	500	-	48,58,58	1.35	6 (12%)	54,89,89	2.24	6 (11%)
3	NA7	B	501	-	35,42,42	1.17	3 (8%)	46,65,65	2.31	10 (21%)
2	FAD	C	500	-	48,58,58	1.46	5 (10%)	54,89,89	2.40	12 (22%)
3	NA7	C	501	-	35,42,42	1.20	2 (5%)	46,65,65	2.83	12 (26%)
4	EPE	D	1452	-	14,15,15	0.50	0	18,20,20	3.47	11 (61%)
2	FAD	D	500	-	48,58,58	1.41	5 (10%)	54,89,89	2.46	8 (14%)
3	NA7	D	501	-	35,42,42	1.07	4 (11%)	46,65,65	2.59	13 (28%)

In the following table, the Chirals column lists the number of chiral outliers, the number of chiral centers analysed, the number of these observed in the model and the number defined in the chemical component dictionary. Similar counts are reported in the Torsion and Rings columns. '-' means no outliers of that kind were identified.

Mol	Type	Chain	Res	Link	Chirals	Torsions	Rings
4	EPE	A	1452	-	-	0/9/19/19	0/1/1/1

*Continued on next page...*



*Continued from previous page...*

Mol	Type	Chain	Res	Link	Chirals	Torsions	Rings
5	PEG	A	1453	-	-	0/4/4/4	0/0/0/0
5	PEG	A	1454	-	-	0/4/4/4	0/0/0/0
5	PEG	A	1455	-	-	0/4/4/4	0/0/0/0
2	FAD	A	500	-	-	0/30/50/50	0/6/6/6
3	NA7	A	501	-	-	0/23/56/56	0/4/4/4
5	PEG	B	1451	-	-	0/4/4/4	0/0/0/0
5	PEG	B	1452	-	-	0/4/4/4	0/0/0/0
5	PEG	B	1453	-	-	0/4/4/4	0/0/0/0
2	FAD	B	500	-	-	0/30/50/50	0/6/6/6
3	NA7	B	501	-	-	0/23/56/56	0/4/4/4
2	FAD	C	500	-	-	0/30/50/50	0/6/6/6
3	NA7	C	501	-	-	0/23/56/56	0/4/4/4
4	EPE	D	1452	-	-	0/9/19/19	0/1/1/1
2	FAD	D	500	-	-	0/30/50/50	0/6/6/6
3	NA7	D	501	-	-	0/23/56/56	0/4/4/4

The worst 5 of 36 bond length outliers are listed below:

Mol	Chain	Res	Type	Atoms	Z	Observed(Å)	Ideal(Å)
2	A	500	FAD	C8M-C8	-2.33	1.46	1.51
3	A	501	NA7	O4D-C1D	2.03	1.48	1.43
3	A	501	NA7	C1D-C2D	2.07	1.55	1.51
3	D	501	NA7	O4B-C1B	2.10	1.43	1.41
3	D	501	NA7	P2B-O2X	2.14	1.62	1.54

The worst 5 of 111 bond angle outliers are listed below:

Mol	Chain	Res	Type	Atoms	Z	Observed(°)	Ideal(°)
2	A	500	FAD	N3A-C2A-N1A	-13.88	118.27	128.89
2	D	500	FAD	N3A-C2A-N1A	-12.91	119.01	128.89
3	A	501	NA7	N3A-C2A-N1A	-12.40	119.40	128.89
3	D	501	NA7	O2B-P2B-O3X	-10.97	79.73	107.11
2	B	500	FAD	N3A-C2A-N1A	-10.03	121.22	128.89

There are no chirality outliers.

There are no torsion outliers.

There are no ring outliers.

13 monomers are involved in 31 short contacts:

Mol	Chain	Res	Type	Clashes	Symm-Clashes
4	A	1452	EPE	1	0

*Continued on next page...*

*Continued from previous page...*

Mol	Chain	Res	Type	Clashes	Symm-Clashes
5	A	1453	PEG	5	0
5	A	1454	PEG	1	0
2	A	500	FAD	2	0
3	A	501	NA7	2	0
5	B	1451	PEG	1	0
5	B	1452	PEG	1	0
2	B	500	FAD	1	0
3	B	501	NA7	4	0
2	C	500	FAD	3	0
3	C	501	NA7	2	0
2	D	500	FAD	4	0
3	D	501	NA7	4	0

## 5.7 Other polymers [i](#)

There are no such residues in this entry.

## 5.8 Polymer linkage issues [i](#)

There are no chain breaks in this entry.

## 6 Fit of model and data [i](#)

### 6.1 Protein, DNA and RNA chains [i](#)

In the following table, the column labelled ‘#RSRZ> 2’ contains the number (and percentage) of RSRZ outliers, followed by percent RSRZ outliers for the chain as percentile scores relative to all X-ray entries and entries of similar resolution. The OWAB column contains the minimum, median, 95<sup>th</sup> percentile and maximum values of the occupancy-weighted average B-factor per residue. The column labelled ‘Q< 0.9’ lists the number of (and percentage) of residues with an average occupancy less than 0.9.

Mol	Chain	Analysed	<RSRZ>	#RSRZ>2	OWAB(Å <sup>2</sup> )	Q<0.9
1	A	446/461 (96%)	-0.52	1 (0%) 95 95	16, 27, 42, 55	0
1	B	445/461 (96%)	-0.50	2 (0%) 93 91	15, 28, 43, 53	0
1	C	445/461 (96%)	-0.43	2 (0%) 93 91	16, 28, 44, 53	0
1	D	446/461 (96%)	-0.56	0 100 100	17, 27, 44, 52	0
All	All	1782/1844 (96%)	-0.50	5 (0%) 94 93	15, 27, 44, 55	0

All (5) RSRZ outliers are listed below:

Mol	Chain	Res	Type	RSRZ
1	A	236	ALA	2.6
1	C	423	SER	2.6
1	C	239	GLY	2.5
1	B	450	SER	2.1
1	B	261	TYR	2.1

### 6.2 Non-standard residues in protein, DNA, RNA chains [i](#)

There are no non-standard protein/DNA/RNA residues in this entry.

### 6.3 Carbohydrates [i](#)

There are no carbohydrates in this entry.

### 6.4 Ligands [i](#)

In the following table, the Atoms column lists the number of modelled atoms in the group and the number defined in the chemical component dictionary. LLDF column lists the quality of electron density of the group with respect to its neighbouring residues in protein, DNA or RNA chains.

The B-factors column lists the minimum, median, 95<sup>th</sup> percentile and maximum values of B factors of atoms in the group. The column labelled 'Q< 0.9' lists the number of atoms with occupancy less than 0.9.

Mol	Type	Chain	Res	Atoms	RSCC	RSR	LLDF	B-factors(Å <sup>2</sup> )	Q<0.9
4	EPE	D	1452	15/15	0.86	0.24	10.26	73,75,80,81	0
5	PEG	A	1454	7/7	0.86	0.22	5.12	33,38,46,46	0
4	EPE	A	1452	15/15	0.88	0.22	5.11	68,71,78,78	0
5	PEG	A	1453	7/7	0.86	0.23	3.49	33,36,42,47	0
5	PEG	B	1452	7/7	0.86	0.20	3.46	33,40,42,42	0
5	PEG	B	1453	7/7	0.87	0.20	1.75	48,51,53,54	0
5	PEG	B	1451	7/7	0.85	0.14	0.57	31,32,34,35	0
2	FAD	A	500	53/53	0.98	0.14	0.16	11,20,30,32	0
2	FAD	B	500	53/53	0.97	0.13	-0.11	9,20,32,34	0
3	NA7	A	501	39/39	0.96	0.14	-0.22	23,27,34,35	0
3	NA7	B	501	39/39	0.95	0.13	-0.29	24,27,32,33	0
2	FAD	C	500	53/53	0.98	0.13	-0.39	12,20,32,33	0
3	NA7	D	501	39/39	0.96	0.12	-0.44	22,26,32,32	0
2	FAD	D	500	53/53	0.98	0.12	-0.53	13,20,32,34	0
3	NA7	C	501	39/39	0.94	0.13	-0.91	24,26,32,34	0
5	PEG	A	1455	7/7	0.89	0.18	-	48,48,51,52	0

## 6.5 Other polymers ⓘ

There are no such residues in this entry.