



# Full wwPDB X-ray Structure Validation Report ⓘ

Jan 31, 2016 – 11:38 PM GMT

PDB ID : 1XVE  
Title : soluble methane monooxygenase hydroxylase: 3-bromo-3-butenol soaked structure  
Authors : Sazinsky, M.H.; Lippard, S.J.  
Deposited on : 2004-10-27  
Resolution : 2.40 Å(reported)

This is a Full wwPDB X-ray Structure Validation Report for a publicly released PDB entry.  
We welcome your comments at [validation@mail.wwpdb.org](mailto:validation@mail.wwpdb.org)  
A user guide is available at  
<http://wwpdb.org/validation/2016/XrayValidationReportHelp>  
with specific help available everywhere you see the ⓘ symbol.

---

The following versions of software and data (see [references ⓘ](#)) were used in the production of this report:

MolProbity : 4.02b-467  
Mogul : 1.7 (RC4), CSD as536be (2015)  
Xtriage (Phenix) : 1.9-1692  
EDS : rb-20026688  
Percentile statistics : 20151230.v01 (using entries in the PDB archive December 30th 2015)  
Refmac : 5.8.0135  
CCP4 : 6.5.0  
Ideal geometry (proteins) : Engh & Huber (2001)  
Ideal geometry (DNA, RNA) : Parkinson et al. (1996)  
Validation Pipeline (wwPDB-VP) : trunk26865

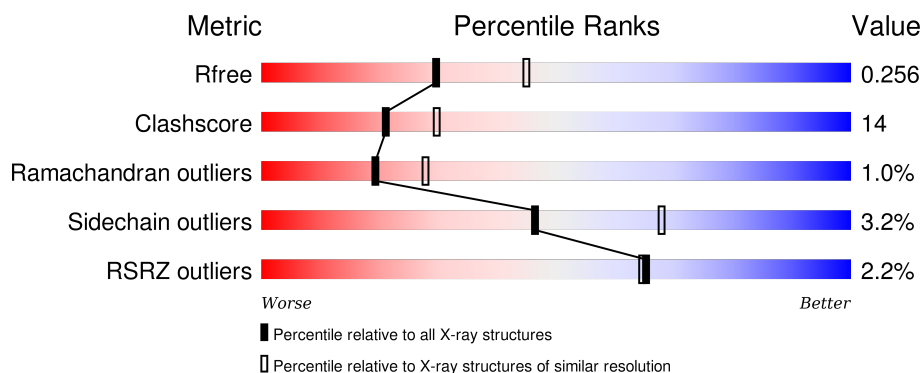
# 1 Overall quality at a glance

The following experimental techniques were used to determine the structure:

## *X-RAY DIFFRACTION*

The reported resolution of this entry is 2.40 Å.

Percentile scores (ranging between 0-100) for global validation metrics of the entry are shown in the following graphic. The table shows the number of entries on which the scores are based.




Metric	Whole archive (#Entries)	Similar resolution (#Entries, resolution range(Å))
$R_{free}$	91344	2919 (2.40-2.40)
Clashscore	102246	3407 (2.40-2.40)
Ramachandran outliers	100387	3351 (2.40-2.40)
Sidechain outliers	100360	3352 (2.40-2.40)
RSRZ outliers	91569	2928 (2.40-2.40)

The table below summarises the geometric issues observed across the polymeric chains and their fit to the electron density. The red, orange, yellow and green segments on the lower bar indicate the fraction of residues that contain outliers for  $\geq 3$ , 2, 1 and 0 types of geometric quality criteria. A grey segment represents the fraction of residues that are not modelled. The numeric value for each fraction is indicated below the corresponding segment, with a dot representing fractions  $\leq 5\%$ . The upper red bar (where present) indicates the fraction of residues that have poor fit to the electron density. The numeric value is given above the bar.

Mol	Chain	Length	Quality of chain
1	A	527	<div> <div>2%</div> <div>67%</div> <div>28%</div> <div>• •</div> </div>
1	B	527	<div> <div>2%</div> <div>67%</div> <div>28%</div> <div>• •</div> </div>
2	C	389	<div> <div>%</div> <div>76%</div> <div>23%</div> <div>•</div> </div>
2	D	389	<div> <div>4%</div> <div>65%</div> <div>33%</div> <div>•</div> </div>
3	E	170	<div> <div>%</div> <div>81%</div> <div>15%</div> <div>• •</div> </div>

*Continued on next page...*

*Continued from previous page...*

Mol	Chain	Length	Quality of chain
3	F	170	

The following table lists non-polymeric compounds, carbohydrate monomers and non-standard residues in protein, DNA, RNA chains that are outliers for geometric or electron-density-fit criteria:

Mol	Type	Chain	Res	Chirality	Geometry	Clashes	Electron density
6	3BB	A	1173	-	-	-	X
6	3BB	A	1174	-	-	-	X
6	3BB	A	1175	-	-	-	X
6	3BB	B	1176	-	-	-	X
6	3BB	B	1177	-	-	-	X
6	3BB	B	1178	-	-	-	X
6	3BB	C	510	-	-	-	X
6	3BB	D	509	-	-	-	X

## 2 Entry composition

There are 7 unique types of molecules in this entry. The entry contains 17840 atoms, of which 0 are hydrogens and 0 are deuteriums.

In the tables below, the ZeroOcc column contains the number of atoms modelled with zero occupancy, the AltConf column contains the number of residues with at least one atom in alternate conformation and the Trace column contains the number of residues modelled with at most 2 atoms.

- Molecule 1 is a protein called Methane monooxygenase component A alpha chain.

Mol	Chain	Residues	Atoms					ZeroOcc	AltConf	Trace
1	A	510	Total	C	N	O	S	0	0	0
			4138	2649	709	762	18			
1	B	510	Total	C	N	O	S	0	0	0
			4137	2646	711	762	18			

- Molecule 2 is a protein called Methane monooxygenase component A beta chain.

Mol	Chain	Residues	Atoms					ZeroOcc	AltConf	Trace
2	C	388	Total	C	N	O	S	0	0	0
			3163	2036	545	574	8			
2	D	388	Total	C	N	O	S	0	0	0
			3151	2028	543	572	8			

- Molecule 3 is a protein called Methane monooxygenase component A gamma chain.

Mol	Chain	Residues	Atoms					ZeroOcc	AltConf	Trace
3	E	166	Total	C	N	O	S	0	0	0
			1364	864	245	250	5			
3	F	166	Total	C	N	O	S	0	0	0
			1358	860	243	250	5			

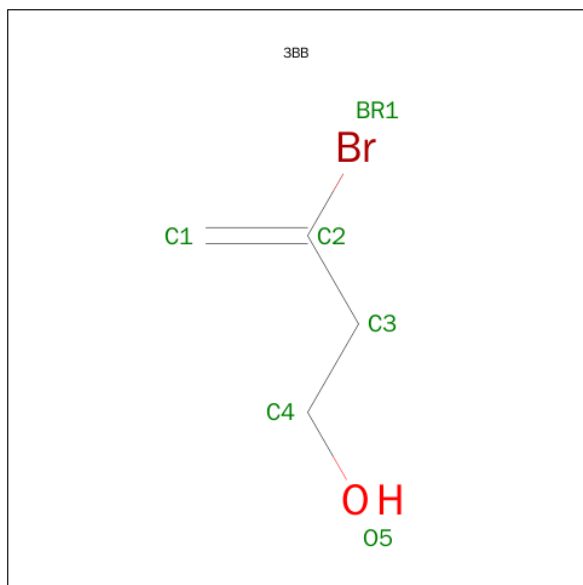
- Molecule 4 is FE (III) ION (three-letter code: FE) (formula: Fe).

Mol	Chain	Residues	Atoms		ZeroOcc	AltConf
4	B	2	Total	Fe	0	0
			2	2		
4	A	2	Total	Fe	0	0
			2	2		

- Molecule 5 is CALCIUM ION (three-letter code: CA) (formula: Ca).

Mol	Chain	Residues	Atoms	ZeroOcc	AltConf
5	A	1	Total Ca 1 1	0	0
5	C	1	Total Ca 1 1	0	0

- Molecule 6 is 3-BROMOBUT-3-EN-1-OL (three-letter code: 3BB) (formula: C<sub>4</sub>H<sub>7</sub>BrO).



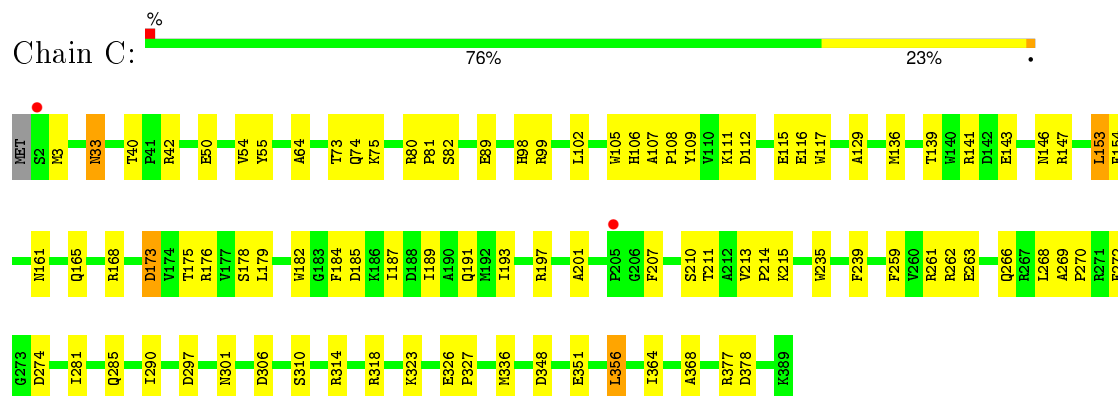
Mol	Chain	Residues	Atoms	ZeroOcc	AltConf
6	A	1	Total Br C O 6 1 4 1	0	0
6	B	1	Total Br C O 6 1 4 1	0	0
6	B	1	Total Br C O 6 1 4 1	0	0
6	B	1	Total Br C O 6 1 4 1	0	0
6	A	1	Total Br C O 6 1 4 1	0	0
6	A	1	Total Br C O 6 1 4 1	0	0
6	A	1	Total Br C O 6 1 4 1	0	0
6	C	1	Total Br C O 6 1 4 1	0	0
6	D	1	Total Br C O 6 1 4 1	0	0
6	C	1	Total Br C O 6 1 4 1	0	0

- Molecule 7 is water.

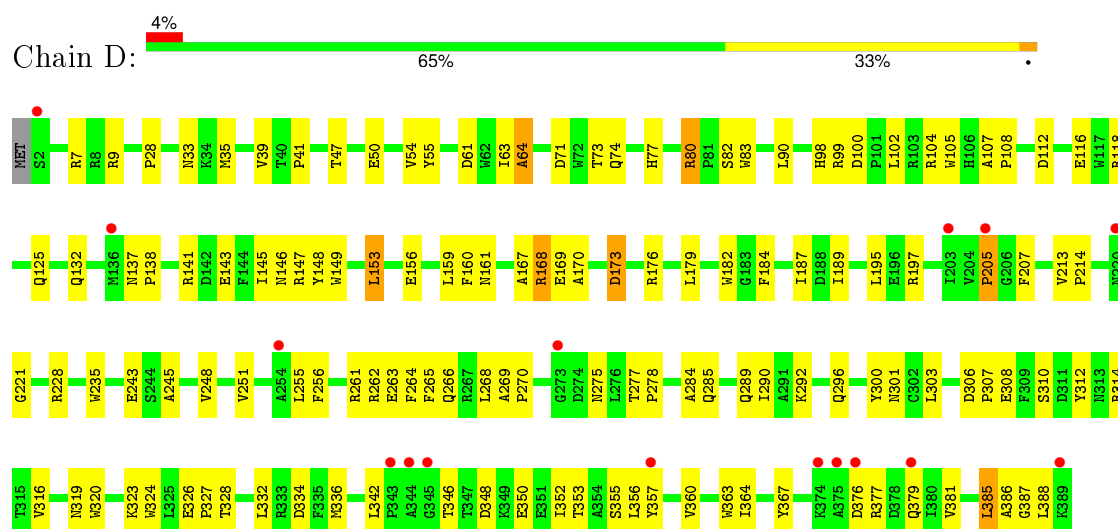
Mol	Chain	Residues	Atoms		ZeroOcc	AltConf
7	A	112	Total 112	O 112	0	0
7	B	100	Total 100	O 100	0	0
7	C	123	Total 123	O 123	0	0
7	D	46	Total 46	O 46	0	0
7	E	65	Total 65	O 65	0	0
7	F	17	Total 17	O 17	0	0



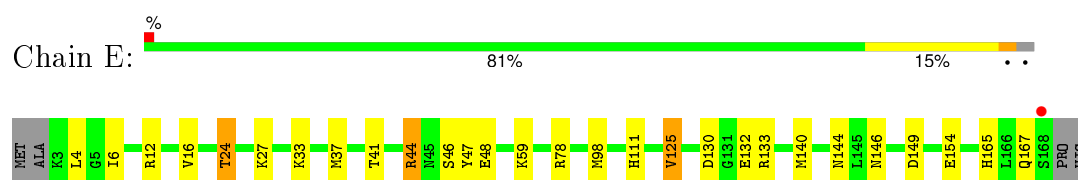
- Molecule 2: Methane monooxygenase component A beta chain



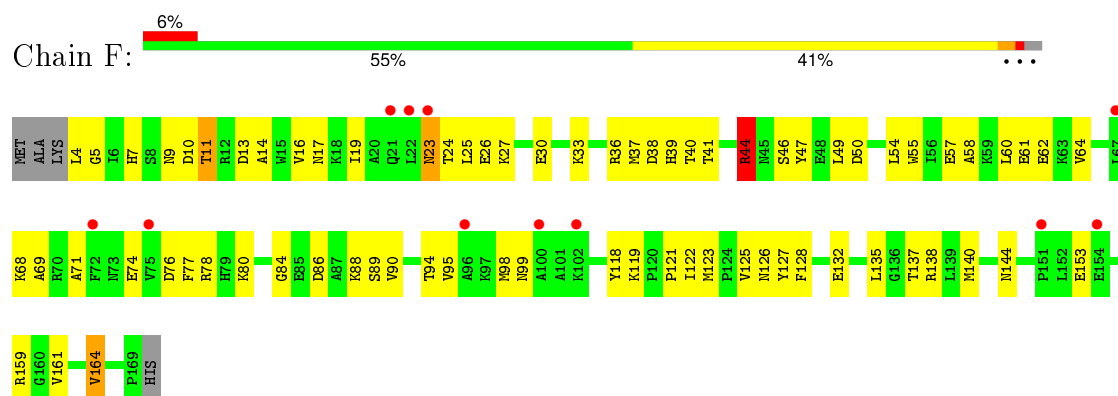
- Molecule 2: Methane monooxygenase component A beta chain



- Molecule 3: Methane monooxygenase component A gamma chain



- Molecule 3: Methane monooxygenase component A gamma chain





## 4 Data and refinement statistics

Property	Value	Source
Space group	P 21 21 21	Depositor
Cell constants a, b, c, $\alpha$ , $\beta$ , $\gamma$	70.47Å 171.94Å 220.50Å 90.00° 90.00° 90.00°	Depositor
Resolution (Å)	29.80 – 2.40 29.80 – 2.40	Depositor EDS
% Data completeness (in resolution range)	89.9 (29.80-2.40) 90.0 (29.80-2.40)	Depositor EDS
$R_{merge}$	0.08	Depositor
$R_{sym}$	0.08	Depositor
$\langle I/\sigma(I) \rangle$ <sup>1</sup>	3.68 (at 2.39Å)	Xtriage
Refinement program	CNS 1.0	Depositor
R, $R_{free}$	0.202 , 0.260 0.200 , 0.256	Depositor DCC
$R_{free}$ test set	9570 reflections (11.20%)	DCC
Wilson B-factor (Å <sup>2</sup> )	34.8	Xtriage
Anisotropy	0.113	Xtriage
Bulk solvent $k_{sol}$ (e/Å <sup>3</sup> ), $B_{sol}$ (Å <sup>2</sup> )	0.34 , 47.1	EDS
Estimated twinning fraction	No twinning to report.	Xtriage
L-test for twinning <sup>2</sup>	$\langle  L  \rangle = 0.49$ , $\langle L^2 \rangle = 0.33$	Xtriage
Outliers	0 of 102096 reflections	Xtriage
$F_o, F_c$ correlation	0.94	EDS
Total number of atoms	17840	wwPDB-VP
Average B, all atoms (Å <sup>2</sup> )	41.0	wwPDB-VP

Xtriage's analysis on translational NCS is as follows: *The largest off-origin peak in the Patterson function is 2.47% of the height of the origin peak. No significant pseudotranslation is detected.*

<sup>1</sup>Intensities estimated from amplitudes.

<sup>2</sup>Theoretical values of  $\langle |L| \rangle$ ,  $\langle L^2 \rangle$  for acentric reflections are 0.5, 0.375 respectively for untwinned datasets, and 0.333, 0.2 for perfectly twinned datasets.

## 5 Model quality

### 5.1 Standard geometry

Bond lengths and bond angles in the following residue types are not validated in this section: 3BB, CA, FE

The Z score for a bond length (or angle) is the number of standard deviations the observed value is removed from the expected value. A bond length (or angle) with  $|Z| > 5$  is considered an outlier worth inspection. RMSZ is the root-mean-square of all Z scores of the bond lengths (or angles).

Mol	Chain	Bond lengths		Bond angles	
		RMSZ	# Z  >5	RMSZ	# Z  >5
1	A	0.36	0/4263	0.59	0/5797
1	B	0.35	0/4262	0.57	0/5796
2	C	0.39	0/3259	0.59	0/4430
2	D	0.34	0/3247	0.55	0/4417
3	E	0.38	0/1392	0.61	0/1876
3	F	0.32	0/1387	0.55	0/1873
All	All	0.36	0/17810	0.58	0/24189

There are no bond length outliers.

There are no bond angle outliers.

There are no chirality outliers.

There are no planarity outliers.

### 5.2 Too-close contacts

In the following table, the Non-H and H(model) columns list the number of non-hydrogen atoms and hydrogen atoms in the chain respectively. The H(added) column lists the number of hydrogen atoms added and optimized by MolProbity. The Clashes column lists the number of clashes within the asymmetric unit, whereas Symm-Clashes lists symmetry related clashes.

Mol	Chain	Non-H	H(model)	H(added)	Clashes	Symm-Clashes
1	A	4138	0	3897	129	0
1	B	4137	0	3888	137	0
2	C	3163	0	2986	83	0
2	D	3151	0	2960	113	0
3	E	1364	0	1352	24	0
3	F	1358	0	1335	65	0
4	A	2	0	0	0	0

*Continued on next page...*

*Continued from previous page...*

Mol	Chain	Non-H	H(model)	H(added)	Clashes	Symm-Clashes
4	B	2	0	0	0	0
5	A	1	0	0	0	0
5	C	1	0	0	0	0
6	A	24	0	19	4	0
6	B	18	0	14	2	0
6	C	12	0	10	2	0
6	D	6	0	5	2	0
7	A	112	0	0	2	0
7	B	100	0	0	4	0
7	C	123	0	0	1	0
7	D	46	0	0	0	0
7	E	65	0	0	1	0
7	F	17	0	0	0	0
All	All	17840	0	16466	485	0

The all-atom clashscore is defined as the number of clashes found per 1000 atoms (including hydrogen atoms). The all-atom clashscore for this structure is 14.

All (485) close contacts within the same asymmetric unit are listed below, sorted by their clash magnitude.

Atom-1	Atom-2	Interatomic distance (Å)	Clash overlap (Å)
3:F:80:LYS:HE2	3:F:84:GLY:HA2	1.23	1.10
2:D:352:ILE:HD13	2:D:388:LEU:HD21	1.51	0.92
1:A:44:THR:HG22	1:A:46:TYR:H	1.34	0.92
1:B:352:ALA:HA	1:B:404:PRO:HB2	1.53	0.90
1:B:44:THR:HG22	1:B:46:TYR:H	1.38	0.88
1:A:227:ASN:HD21	1:A:295:LYS:H	1.21	0.87
3:F:36:ARG:NH1	3:F:119:LYS:HB3	1.93	0.83
1:A:78:GLN:HE22	1:A:150:GLN:HE21	1.25	0.83
1:A:155:ASN:HD22	1:A:168:HIS:HD2	1.23	0.82
1:A:435:THR:HG21	1:A:437:ARG:HE	1.46	0.81
2:D:100:ASP:OD1	2:D:104:ARG:HD3	1.81	0.81
1:B:283:THR:HB	1:B:284:PRO:HD3	1.64	0.80
2:C:270:PRO:HB3	2:D:270:PRO:HB3	1.62	0.79
2:D:319:ASN:OD1	3:F:78:ARG:HD3	1.81	0.79
2:D:102:LEU:HD12	2:D:290:ILE:HG23	1.66	0.78
1:B:78:GLN:HE22	1:B:150:GLN:HE21	1.30	0.77
1:B:227:ASN:HD21	1:B:296:PHE:H	1.31	0.77
1:A:352:ALA:HA	1:A:404:PRO:HB2	1.67	0.77
3:F:57:GLU:O	3:F:61:GLU:HG3	1.85	0.76
2:D:261:ARG:HE	2:D:285:GLN:HE22	1.33	0.76

*Continued on next page...*

*Continued from previous page...*

Atom-1	Atom-2	Interatomic distance (Å)	Clash overlap (Å)
3:E:41:THR:O	3:E:44:ARG:HD2	1.87	0.75
1:A:227:ASN:ND2	1:A:295:LYS:H	1.85	0.74
3:E:24:THR:HG22	3:E:27:LYS:H	1.52	0.74
3:F:9:ASN:OD1	3:F:11:THR:HG23	1.87	0.74
1:B:495:LEU:HD11	1:B:512:ILE:HG13	1.68	0.74
1:A:338:ASP:OD2	1:A:433:ALA:HB2	1.88	0.74
1:B:292:TYR:OH	1:B:344:HIS:HD2	1.69	0.74
3:F:41:THR:O	3:F:44:ARG:HD2	1.88	0.73
2:C:3:MET:HE3	2:D:28:PRO:HG3	1.71	0.73
2:C:261:ARG:HE	2:C:285:GLN:HE22	1.34	0.73
3:E:12:ARG:O	3:E:16:VAL:HG23	1.89	0.73
2:C:102:LEU:HD12	2:C:290:ILE:HG23	1.71	0.73
2:C:146:ASN:HD21	2:C:197:ARG:HH21	1.38	0.72
3:F:13:ASP:O	3:F:16:VAL:HG22	1.89	0.72
1:A:216:LEU:HD13	1:A:286:LEU:HD11	1.71	0.72
1:B:206:LEU:HD11	1:B:321:LEU:HD11	1.73	0.71
1:B:268:ASN:HD21	1:B:327:GLU:H	1.39	0.71
1:A:292:TYR:OH	1:A:344:HIS:HD2	1.74	0.70
1:B:144:GLU:HA	1:B:144:GLU:OE2	1.90	0.70
3:F:33:LYS:O	3:F:37:MET:HG2	1.91	0.70
2:D:167:ALA:O	2:D:176:ARG:NH1	2.25	0.70
2:C:326:GLU:HB3	2:C:327:PRO:HD3	1.72	0.69
3:F:58:ALA:O	3:F:62:GLU:HG3	1.92	0.69
1:B:175:ARG:HD2	1:B:181:TRP:CE2	2.26	0.69
1:B:214:ASN:HB3	1:B:215:PRO:HD3	1.74	0.69
2:D:352:ILE:CD1	2:D:388:LEU:HD21	2.24	0.68
1:A:20:PRO:HG3	2:C:129:ALA:HB2	1.75	0.68
2:C:111:LYS:O	2:C:115:GLU:HG3	1.94	0.68
2:D:102:LEU:CD1	2:D:290:ILE:HG23	2.24	0.67
1:B:128:ALA:O	1:B:134:LYS:HE2	1.94	0.67
1:B:281:TYR:O	1:B:284:PRO:HD2	1.95	0.67
1:A:214:ASN:HB3	1:A:215:PRO:HD3	1.76	0.67
3:F:80:LYS:CE	3:F:84:GLY:HA2	2.15	0.66
3:E:146:ASN:HB3	3:E:149:ASP:OD2	1.96	0.66
1:A:140:GLN:O	1:A:144:GLU:HG2	1.96	0.66
1:A:125:TRP:HE1	2:C:161:ASN:ND2	1.94	0.66
1:B:179:PRO:HB3	1:B:469:ILE:HD13	1.78	0.65
2:C:261:ARG:HE	2:C:285:GLN:NE2	1.94	0.65
2:D:107:ALA:HB3	2:D:108:PRO:HD3	1.77	0.65
2:C:259:PHE:CE1	2:C:356:LEU:HD13	2.31	0.65
3:F:95:VAL:HG12	3:F:99:ASN:HD21	1.62	0.65

*Continued on next page...*

*Continued from previous page...*

Atom-1	Atom-2	Interatomic distance (Å)	Clash overlap (Å)
1:B:210:ALA:HA	1:B:247:MET:CE	2.27	0.65
1:B:230:GLU:OE2	2:D:9:ARG:HD3	1.97	0.64
1:A:284:PRO:HB3	1:A:342:ALA:HB1	1.78	0.64
2:C:146:ASN:ND2	2:C:197:ARG:HH21	1.95	0.64
1:A:435:THR:CG2	1:A:437:ARG:HE	2.11	0.64
1:A:83:GLN:HB3	1:B:77:ARG:HH12	1.62	0.64
1:B:439:HIS:HB3	3:F:161:VAL:HG21	1.79	0.64
1:B:171:ALA:O	1:B:175:ARG:HG2	1.99	0.63
2:D:261:ARG:HE	2:D:285:GLN:NE2	1.95	0.63
1:B:227:ASN:ND2	1:B:296:PHE:H	1.97	0.63
2:C:176:ARG:HB2	2:C:176:ARG:NH1	2.12	0.63
1:B:216:LEU:O	1:B:220:VAL:HG23	1.99	0.63
2:D:71:ASP:HB2	3:F:54:LEU:HD11	1.81	0.63
2:D:255:LEU:HD12	2:D:328:THR:HG21	1.81	0.63
2:D:189:ILE:HD12	2:D:284:ALA:HB2	1.81	0.62
1:B:163:GLN:HA	2:C:3:MET:HE2	1.81	0.62
2:C:364:ILE:HA	2:C:368:ALA:HB3	1.82	0.62
1:A:402:PHE:O	1:A:403:ILE:HD12	1.99	0.62
1:B:438:VAL:HB	3:F:164:VAL:HG22	1.82	0.62
1:B:78:GLN:NE2	1:B:150:GLN:HE21	1.98	0.61
2:C:201:ALA:HA	2:C:207:PHE:HB3	1.81	0.61
1:B:445:MET:HB3	1:B:523:VAL:HG21	1.82	0.61
1:A:78:GLN:NE2	1:A:150:GLN:HE21	1.98	0.61
2:C:213:VAL:HB	2:C:214:PRO:HD3	1.83	0.61
1:B:140:GLN:O	1:B:144:GLU:HG2	2.01	0.60
1:B:210:ALA:HA	1:B:247:MET:HE1	1.82	0.60
1:A:84:ASP:HB3	1:B:81:SER:OG	2.02	0.60
2:D:47:THR:OG1	2:D:50:GLU:HG3	2.01	0.60
3:F:119:LYS:HA	3:F:128:PHE:CE1	2.37	0.60
1:B:495:LEU:HD11	1:B:512:ILE:CG1	2.32	0.59
2:D:125:GLN:NE2	6:D:509:3BB:H41	2.17	0.59
2:C:269:ALA:HB3	2:C:270:PRO:HD3	1.84	0.59
2:D:61:ASP:OD1	3:F:7:HIS:HD2	1.85	0.59
1:A:49:LYS:HD3	3:E:144:ASN:HD22	1.67	0.59
3:F:61:GLU:O	3:F:121:PRO:HG2	2.02	0.59
1:A:439:HIS:HE1	1:A:454:GLU:OE1	1.86	0.59
1:B:291:GLU:OE1	1:B:343:HIS:HE1	1.85	0.59
2:C:348:ASP:OD2	2:C:351:GLU:HG3	2.03	0.58
1:B:115:TYR:OH	2:D:173:ASP:HA	2.03	0.58
1:B:435:THR:HG22	7:B:1218:HOH:O	2.02	0.58
2:D:352:ILE:HG13	2:D:353:THR:N	2.18	0.58

*Continued on next page...*

*Continued from previous page...*

Atom-1	Atom-2	Interatomic distance (Å)	Clash overlap (Å)
1:A:108:ASN:HD21	1:A:175:ARG:HE	1.52	0.58
1:B:119:ALA:HB1	2:D:168:ARG:HD2	1.84	0.58
1:A:360:ARG:HG2	1:A:498:GLN:HB2	1.85	0.58
1:B:108:ASN:HD21	1:B:175:ARG:HE	1.51	0.57
1:A:175:ARG:HG3	1:A:181:TRP:CD2	2.39	0.57
1:A:146:ARG:HB2	2:C:106:HIS:CE1	2.39	0.57
1:B:211:CYS:HB2	1:B:313:TRP:CD1	2.39	0.57
1:B:230:GLU:C	1:B:233:PRO:HD2	2.25	0.57
2:C:40:THR:H	6:C:510:3BB:C1	2.17	0.57
1:A:302:VAL:HG22	1:A:376:TYR:CZ	2.39	0.57
3:F:95:VAL:HG12	3:F:99:ASN:ND2	2.19	0.57
1:B:48:THR:O	3:F:137:THR:HG23	2.05	0.57
1:A:403:ILE:HG22	1:A:405:LEU:H	1.70	0.57
2:C:107:ALA:HB3	2:C:108:PRO:HD3	1.86	0.57
2:C:3:MET:HE3	2:D:28:PRO:CG	2.35	0.57
3:F:23:ASN:HD22	3:F:23:ASN:N	2.02	0.57
1:A:310:TYR:CZ	1:A:336:LYS:HD2	2.40	0.57
1:B:282:PHE:O	1:B:286:LEU:HB2	2.04	0.56
2:D:262:ARG:HA	2:D:266:GLN:HB3	1.87	0.56
3:F:23:ASN:H	3:F:23:ASN:HD22	1.52	0.56
1:A:187:VAL:HG12	1:A:277:THR:HG22	1.88	0.56
2:D:296:GLN:O	2:D:300:TYR:HB2	2.05	0.56
1:A:302:VAL:HG22	1:A:376:TYR:CE2	2.41	0.56
3:F:11:THR:O	3:F:14:ALA:HB3	2.06	0.56
1:A:213:THR:O	1:A:217:ILE:HG12	2.06	0.56
1:A:81:SER:OG	1:B:84:ASP:HB3	2.05	0.56
1:B:354:TRP:CG	1:B:355:PRO:HD3	2.41	0.56
1:B:504:ASP:OD2	1:B:505:LYS:HG3	2.05	0.56
1:A:360:ARG:HD2	1:A:489:ARG:NH2	2.21	0.56
1:B:278:GLN:NE2	1:B:282:PHE:HE2	2.03	0.56
1:B:213:THR:O	1:B:217:ILE:HG12	2.05	0.56
2:D:385:LEU:C	2:D:387:GLY:H	2.09	0.56
1:A:144:GLU:HA	1:A:144:GLU:OE2	2.06	0.55
1:A:89:LEU:HD21	1:B:230:GLU:HG3	1.88	0.55
2:D:39:VAL:O	2:D:41:PRO:HD3	2.06	0.55
1:B:116:ASN:CG	1:B:189:SER:HA	2.26	0.55
2:D:263:GLU:OE2	2:D:263:GLU:HA	2.07	0.55
2:C:176:ARG:HH11	2:C:176:ARG:HB2	1.71	0.55
1:B:460:GLU:OE1	1:B:463:ARG:HD3	2.07	0.55
3:F:4:LEU:HD11	3:F:10:ASP:OD2	2.06	0.55
1:A:209:GLU:HA	1:A:213:THR:HB	1.89	0.55

*Continued on next page...*

*Continued from previous page...*

Atom-1	Atom-2	Interatomic distance (Å)	Clash overlap (Å)
1:A:212:PHE:O	1:A:216:LEU:HB3	2.07	0.54
3:F:90:VAL:HG11	3:F:118:TYR:CZ	2.42	0.54
2:D:376:ASP:OD2	2:D:379:GLN:HG2	2.07	0.54
2:D:348:ASP:OD2	2:D:350:GLU:HB2	2.07	0.54
3:E:4:LEU:O	3:E:4:LEU:HG	2.08	0.54
1:B:211:CYS:HB2	1:B:313:TRP:CG	2.42	0.54
2:D:189:ILE:HD11	2:D:284:ALA:HA	1.90	0.54
2:D:213:VAL:HB	2:D:214:PRO:CD	2.38	0.54
1:A:227:ASN:HD21	1:A:295:LYS:N	1.98	0.54
3:F:30:GLU:HA	3:F:30:GLU:OE2	2.08	0.54
1:B:163:GLN:HA	2:C:3:MET:CE	2.38	0.54
1:A:196:ASP:HB2	3:E:140:MET:SD	2.48	0.54
2:C:269:ALA:HB1	2:C:274:ASP:HB3	1.90	0.53
2:C:112:ASP:O	2:C:116:GLU:HG3	2.09	0.53
1:A:406:MET:O	1:A:410:GLU:HG3	2.09	0.53
3:F:80:LYS:HE2	3:F:84:GLY:CA	2.17	0.53
2:D:112:ASP:O	2:D:116:GLU:HG3	2.07	0.53
2:D:179:LEU:HD23	2:D:182:TRP:CE3	2.43	0.53
1:B:398:PRO:HG3	1:B:507:TRP:CD1	2.43	0.53
2:D:102:LEU:HB2	2:D:104:ARG:HD2	1.91	0.53
3:F:44:ARG:HD3	3:F:47:TYR:CZ	2.43	0.53
1:A:312:ASP:O	1:A:316:ILE:HB	2.09	0.53
2:D:54:VAL:O	2:D:55:TYR:HB2	2.09	0.53
2:C:314:ARG:O	2:C:318:ARG:HB2	2.09	0.53
1:B:281:TYR:CZ	1:B:285:VAL:HG21	2.44	0.52
1:B:193:ILE:HD11	2:D:82:SER:HB3	1.91	0.52
1:B:216:LEU:C	1:B:216:LEU:HD12	2.30	0.52
2:C:40:THR:OG1	6:C:510:3BB:H41	2.08	0.52
1:A:206:LEU:O	1:A:210:ALA:HB3	2.09	0.52
2:D:277:THR:HB	2:D:278:PRO:HD3	1.90	0.52
1:B:521:ASN:OD1	1:B:523:VAL:HG12	2.10	0.52
1:A:498:GLN:HG3	1:A:506:LEU:HD22	1.92	0.52
3:F:90:VAL:HG11	3:F:118:TYR:CE2	2.45	0.52
1:B:186:ARG:HD3	1:B:186:ARG:C	2.30	0.52
1:B:175:ARG:HD2	1:B:181:TRP:CD2	2.44	0.52
1:B:184:MET:HE2	1:B:188:PHE:HB2	1.91	0.52
2:D:356:LEU:CD1	2:D:385:LEU:HD13	2.40	0.52
2:C:102:LEU:CD1	2:C:290:ILE:HG23	2.38	0.52
3:E:154:GLU:HG3	7:E:225:HOH:O	2.10	0.52
1:A:160:LYS:HA	2:C:33:ASN:HB2	1.91	0.52
3:E:165:HIS:HE1	3:E:167:GLN:HE21	1.58	0.52

*Continued on next page...*

*Continued from previous page...*

Atom-1	Atom-2	Interatomic distance (Å)	Clash overlap (Å)
1:A:344:HIS:HE1	1:A:376:TYR:CD2	2.28	0.51
2:D:147:ARG:HD2	2:D:148:TYR:CE1	2.45	0.51
1:B:361:LEU:HD23	6:B:1178:3BB:H41	1.91	0.51
1:A:121:THR:HG21	1:A:140:GLN:CG	2.40	0.51
3:F:23:ASN:ND2	3:F:23:ASN:N	2.59	0.51
1:B:44:THR:OG1	1:B:127:SER:HA	2.10	0.51
1:B:476:ARG:NH1	3:F:5:GLY:HA3	2.25	0.51
1:B:223:TRP:CZ3	1:B:297:LYS:HA	2.46	0.51
1:B:175:ARG:NH1	1:B:181:TRP:CZ2	2.79	0.51
1:B:188:PHE:CE1	1:B:282:PHE:HZ	2.29	0.51
2:C:98:HIS:HE1	2:C:178:SER:OG	1.94	0.51
2:D:336:MET:CE	2:D:352:ILE:HD12	2.41	0.51
3:F:77:PHE:CD1	3:F:77:PHE:O	2.64	0.51
2:D:285:GLN:O	2:D:289:GLN:HG2	2.11	0.51
3:F:39:HIS:CD2	3:F:49:LEU:HD12	2.46	0.51
1:B:23:VAL:HG13	1:B:27:GLU:OE2	2.11	0.51
1:A:361:LEU:HD23	6:A:1175:3BB:H41	1.92	0.51
1:A:116:ASN:CG	1:A:189:SER:HA	2.32	0.51
1:A:188:PHE:CE1	1:A:282:PHE:HZ	2.29	0.51
1:A:251:TYR:CD2	1:A:321:LEU:HD21	2.46	0.50
1:A:206:LEU:HD11	1:A:321:LEU:CD1	2.40	0.50
2:D:153:LEU:C	2:D:153:LEU:HD12	2.32	0.50
1:B:186:ARG:HD3	1:B:186:ARG:O	2.12	0.50
2:D:256:PHE:HA	2:D:332:LEU:HD21	1.93	0.50
2:D:90:LEU:HD13	2:D:303:LEU:HD13	1.92	0.50
2:C:306:ASP:O	2:C:310:SER:HB2	2.10	0.50
1:B:439:HIS:HB3	3:F:161:VAL:CG2	2.40	0.50
2:D:235:TRP:CD1	2:D:235:TRP:C	2.85	0.50
2:D:357:TYR:CD1	2:D:381:VAL:HG21	2.47	0.50
1:A:206:LEU:HD11	1:A:321:LEU:HD11	1.93	0.50
1:B:257:ILE:O	1:B:263:SER:HB2	2.12	0.50
1:A:292:TYR:OH	1:A:344:HIS:CD2	2.62	0.50
1:A:193:ILE:HD11	2:C:82:SER:HB3	1.94	0.50
1:B:164:ASP:OD1	1:B:489:ARG:NH2	2.45	0.50
2:D:228:ARG:HH11	2:D:228:ARG:HG2	1.77	0.49
3:F:61:GLU:HB3	3:F:121:PRO:HD3	1.93	0.49
2:C:3:MET:HE3	2:D:28:PRO:CD	2.42	0.49
1:A:403:ILE:HD13	1:A:515:LEU:CD1	2.41	0.49
2:C:136:MET:SD	2:C:141:ARG:HB2	2.52	0.49
1:B:160:LYS:HA	2:D:33:ASN:HB2	1.93	0.49
2:D:310:SER:O	2:D:314:ARG:HG3	2.12	0.49

*Continued on next page...*



*Continued from previous page...*

Atom-1	Atom-2	Interatomic distance (Å)	Clash overlap (Å)
3:F:125:VAL:HG23	3:F:126:ASN:N	2.28	0.49
2:D:105:TRP:O	2:D:108:PRO:HD2	2.12	0.49
3:F:19:ILE:HG21	3:F:60:LEU:HD12	1.95	0.49
2:D:63:ILE:HD11	2:D:83:TRP:O	2.13	0.49
2:C:175:THR:O	2:C:179:LEU:HB2	2.13	0.49
2:D:184:PHE:O	2:D:187:ILE:HG22	2.13	0.49
2:D:77:HIS:CD2	3:F:140:MET:HG2	2.47	0.49
2:C:33:ASN:HD22	2:C:33:ASN:H	1.60	0.49
3:E:98:MET:O	3:E:98:MET:HE2	2.13	0.49
1:B:159:ALA:O	2:D:33:ASN:HB2	2.13	0.49
3:F:36:ARG:HA	3:F:40:THR:HG23	1.94	0.48
1:A:184:MET:HE2	1:A:188:PHE:HB2	1.94	0.48
1:A:243:GLU:O	1:A:247:MET:HG2	2.13	0.48
2:C:153:LEU:HD12	2:C:153:LEU:C	2.33	0.48
1:A:108:ASN:HD21	1:A:175:ARG:NE	2.11	0.48
1:B:23:VAL:HB	2:D:195:LEU:CD1	2.43	0.48
2:C:336:MET:HE1	2:C:356:LEU:HD21	1.96	0.48
1:B:210:ALA:HA	1:B:247:MET:HE2	1.95	0.48
3:F:38:ASP:HB2	3:F:39:HIS:CE1	2.48	0.48
2:C:161:ASN:HB3	2:C:235:TRP:CE2	2.48	0.48
1:B:206:LEU:HD11	1:B:321:LEU:CD1	2.43	0.48
1:A:85:ALA:HB2	1:B:81:SER:HB3	1.95	0.48
2:D:213:VAL:HB	2:D:214:PRO:HD3	1.95	0.48
1:A:159:ALA:O	2:C:33:ASN:HB2	2.13	0.48
2:C:89:GLU:CD	3:E:125:VAL:HG13	2.34	0.48
2:C:268:LEU:O	2:C:272:PHE:HD1	1.96	0.48
2:C:297:ASP:O	2:C:301:ASN:HB3	2.14	0.48
2:C:105:TRP:O	2:C:108:PRO:HD2	2.13	0.48
2:C:266:GLN:HE22	2:D:132:GLN:CD	2.17	0.48
1:A:22:SER:OG	1:A:23:VAL:N	2.47	0.48
1:A:289:LEU:HD23	6:A:1175:3BB:BR1	2.69	0.47
1:B:175:ARG:HD2	1:B:181:TRP:CZ2	2.49	0.47
1:A:283:THR:HB	1:A:284:PRO:HD3	1.95	0.47
1:A:149:HIS:CE1	2:C:105:TRP:HB2	2.49	0.47
3:F:118:TYR:HB3	3:F:123:MET:HB2	1.97	0.47
2:C:154:PHE:CZ	2:C:215:LYS:HB2	2.50	0.47
2:D:277:THR:N	2:D:278:PRO:CD	2.76	0.47
2:D:77:HIS:CG	3:F:140:MET:HG2	2.49	0.47
1:B:137:TYR:O	1:B:141:VAL:HG23	2.14	0.47
3:F:64:VAL:HG12	3:F:64:VAL:O	2.13	0.47
2:D:269:ALA:HB3	2:D:270:PRO:HD3	1.97	0.47

*Continued on next page...*

*Continued from previous page...*

Atom-1	Atom-2	Interatomic distance (Å)	Clash overlap (Å)
2:C:211:THR:C	2:C:214:PRO:HD2	2.35	0.47
1:B:121:THR:HG21	1:B:140:GLN:CG	2.44	0.47
2:C:336:MET:HE1	2:C:356:LEU:CD2	2.44	0.47
1:B:437:ARG:NH1	1:B:454:GLU:OE2	2.48	0.47
2:D:146:ASN:HB2	2:D:207:PHE:CE1	2.50	0.47
1:A:521:ASN:OD1	1:A:523:VAL:HG12	2.14	0.47
1:A:31:TRP:CH2	2:C:210:SER:HA	2.49	0.47
3:F:24:THR:HB	3:F:27:LYS:CB	2.45	0.47
1:B:278:GLN:HE21	1:B:282:PHE:HE2	1.62	0.47
1:A:206:LEU:HD23	1:A:271:LEU:HD13	1.97	0.47
3:F:98:MET:HG3	3:F:138:ARG:HG2	1.97	0.47
2:D:377:ARG:O	2:D:381:VAL:HG23	2.15	0.46
2:D:159:LEU:HD22	2:D:248:VAL:HG13	1.98	0.46
1:B:138:LEU:HD22	2:D:160:PHE:CZ	2.50	0.46
1:A:186:ARG:HD3	1:A:186:ARG:O	2.15	0.46
2:D:80:ARG:HG3	3:F:132:GLU:HG2	1.97	0.46
2:D:292:LYS:HD2	2:D:367:TYR:OH	2.15	0.46
1:A:83:GLN:HB3	1:B:77:ARG:NH1	2.28	0.46
2:C:281:ILE:O	2:C:285:GLN:HG2	2.15	0.46
1:B:121:THR:HG21	1:B:140:GLN:HB3	1.98	0.46
1:A:121:THR:HG21	1:A:140:GLN:HG2	1.98	0.46
2:C:263:GLU:OE2	2:C:263:GLU:HA	2.15	0.46
1:A:26:GLN:HG2	7:A:1273:HOH:O	2.15	0.46
1:A:186:ARG:HA	2:C:73:THR:OG1	2.16	0.46
2:C:179:LEU:HD12	2:C:182:TRP:CE3	2.50	0.46
1:B:21:THR:HG22	1:B:22:SER:N	2.31	0.46
2:D:360:VAL:O	2:D:364:ILE:HG13	2.15	0.46
1:B:186:ARG:HA	2:D:73:THR:OG1	2.16	0.46
2:C:109:TYR:OH	2:C:184:PHE:HB3	2.16	0.46
1:B:302:VAL:HG13	1:B:376:TYR:HE2	1.81	0.45
3:E:46:SER:OG	3:E:48:GLU:HG2	2.16	0.45
2:D:316:VAL:O	2:D:319:ASN:HB3	2.16	0.45
1:B:266:TYR:CD2	3:F:144:ASN:HB2	2.51	0.45
1:B:488:LEU:HD13	1:B:492:GLY:O	2.16	0.45
1:A:344:HIS:HE1	1:A:376:TYR:CE2	2.34	0.45
3:E:165:HIS:CE1	3:E:167:GLN:HE21	2.34	0.45
3:F:44:ARG:HG3	3:F:46:SER:O	2.17	0.45
1:B:369:MET:HE2	1:B:384:GLY:HA2	1.98	0.45
1:A:495:LEU:HD11	1:A:512:ILE:HG13	1.99	0.45
2:D:243:GLU:HB2	2:D:320:TRP:CZ2	2.52	0.45
2:D:324:TRP:C	2:D:327:PRO:HD2	2.37	0.45

*Continued on next page...*

*Continued from previous page...*

Atom-1	Atom-2	Interatomic distance (Å)	Clash overlap (Å)
1:B:442:ASN:ND2	3:F:44:ARG:O	2.46	0.45
1:B:297:LYS:HG2	1:B:371:TRP:CE2	2.51	0.45
2:D:324:TRP:O	2:D:327:PRO:HD2	2.16	0.45
1:A:297:LYS:NZ	1:A:368:GLU:OE2	2.50	0.45
1:B:105:VAL:O	1:B:109:PHE:HB2	2.17	0.45
1:B:98:LYS:NZ	1:B:368:GLU:OE2	2.50	0.45
1:B:160:LYS:HE3	1:B:161:ASN:HD21	1.82	0.45
2:C:165:GLN:OE1	2:C:239:PHE:HA	2.17	0.45
2:C:235:TRP:CD1	2:C:235:TRP:C	2.90	0.45
3:E:111:HIS:HE1	3:E:132:GLU:OE2	2.00	0.45
2:C:102:LEU:HD21	6:D:509:3BB:H31	1.98	0.45
3:F:16:VAL:HG23	3:F:17:ASN:N	2.32	0.44
1:A:466:CYS:HB2	2:C:73:THR:HA	1.99	0.44
1:A:92:GLY:O	1:A:162:GLY:HA2	2.17	0.44
1:A:125:TRP:CD1	1:A:125:TRP:O	2.71	0.44
1:A:115:TYR:OH	2:C:173:ASP:HA	2.18	0.44
1:B:190:ASP:HB3	2:D:74:GLN:O	2.17	0.44
1:B:52:MET:HE3	1:B:253:THR:HG23	2.00	0.44
2:C:197:ARG:CZ	2:C:214:PRO:HG2	2.47	0.44
1:A:360:ARG:HD2	1:A:489:ARG:HH22	1.82	0.44
2:C:153:LEU:HB3	2:C:193:ILE:HG21	2.00	0.44
1:A:476:ARG:HH12	3:E:6:ILE:HG13	1.81	0.44
3:F:94:THR:HG22	3:F:135:LEU:HD21	2.00	0.44
3:E:44:ARG:HD3	3:E:47:TYR:CZ	2.53	0.44
1:B:468:ASN:HA	7:B:1220:HOH:O	2.18	0.44
2:D:179:LEU:HD21	2:D:245:ALA:HB2	2.00	0.44
1:B:146:ARG:HG2	1:B:150:GLN:OE1	2.17	0.44
1:A:186:ARG:HD2	1:A:277:THR:HG23	2.00	0.44
1:B:461:PRO:HG2	3:F:159:ARG:CZ	2.48	0.44
2:D:145:ILE:HG22	2:D:146:ASN:N	2.33	0.44
2:C:42:ARG:HB2	2:C:99:ARG:HG3	2.00	0.44
1:A:403:ILE:HD13	1:A:515:LEU:HD13	1.98	0.44
1:B:188:PHE:CZ	1:B:282:PHE:HZ	2.36	0.44
1:B:196:ASP:HB2	3:F:140:MET:SD	2.58	0.44
1:B:466:CYS:HB2	2:D:73:THR:HA	2.00	0.44
1:B:322:GLY:C	1:B:324:TYR:H	2.21	0.44
1:A:177:ILE:HG12	1:A:485:LEU:HB2	2.00	0.44
1:B:306:ASP:O	1:B:310:TYR:HB2	2.17	0.44
2:D:161:ASN:HB3	2:D:235:TRP:CE2	2.53	0.44
3:F:125:VAL:HG23	3:F:126:ASN:H	1.83	0.44
2:D:264:PHE:O	2:D:268:LEU:HG	2.17	0.44

*Continued on next page...*

*Continued from previous page...*

Atom-1	Atom-2	Interatomic distance (Å)	Clash overlap (Å)
1:B:184:MET:HE3	1:B:187:VAL:CG2	2.48	0.43
2:D:356:LEU:HD12	2:D:385:LEU:HD13	2.00	0.43
3:E:165:HIS:HE1	3:E:167:GLN:HG3	1.82	0.43
1:B:110:LEU:HD11	1:B:217:ILE:CD1	2.48	0.43
2:D:143:GLU:O	2:D:147:ARG:HB3	2.18	0.43
1:A:190:ASP:HB3	2:C:74:GLN:O	2.18	0.43
2:C:146:ASN:HD21	2:C:197:ARG:NH2	2.10	0.43
1:B:44:THR:HG23	1:B:126:ASP:OD1	2.18	0.43
1:A:75:ASP:OD2	1:A:146:ARG:NH1	2.52	0.43
1:B:108:ASN:O	1:B:111:GLU:HB3	2.18	0.43
1:B:113:GLY:HA2	1:B:188:PHE:HB3	1.99	0.43
2:C:310:SER:O	2:C:314:ARG:HG3	2.19	0.43
2:C:187:ILE:O	2:C:191:GLN:HG3	2.18	0.43
3:F:55:TRP:O	3:F:58:ALA:HB3	2.19	0.43
2:D:262:ARG:O	2:D:266:GLN:HB3	2.18	0.43
2:D:357:TYR:CE1	2:D:381:VAL:HG21	2.53	0.43
2:D:149:TRP:HB2	2:D:265:PHE:CE2	2.54	0.43
1:A:459:ALA:C	1:A:461:PRO:HD3	2.39	0.43
3:F:86:ASP:O	3:F:89:SER:HB2	2.19	0.43
1:B:344:HIS:HE1	1:B:376:TYR:CE2	2.36	0.43
2:C:143:GLU:O	2:C:147:ARG:HB3	2.19	0.42
1:B:213:THR:OG1	6:B:1176:3BB:BR1	2.70	0.42
2:D:385:LEU:C	2:D:387:GLY:N	2.73	0.42
2:D:63:ILE:O	2:D:64:ALA:C	2.57	0.42
1:B:86:LEU:HD13	1:B:231:ILE:HD13	2.01	0.42
2:C:185:ASP:O	2:C:189:ILE:HG13	2.19	0.42
1:A:91:ALA:HB1	7:A:1178:HOH:O	2.18	0.42
1:A:302:VAL:HG22	1:A:376:TYR:OH	2.19	0.42
2:C:112:ASP:OD1	2:D:118:ARG:NH2	2.49	0.42
1:A:109:PHE:HB3	1:A:184:MET:SD	2.59	0.42
1:B:437:ARG:N	1:B:437:ARG:HD2	2.34	0.42
3:F:69:ALA:C	3:F:71:ALA:H	2.23	0.42
2:D:342:LEU:HD22	2:D:346:THR:HG21	2.00	0.42
3:F:86:ASP:HB3	3:F:89:SER:OG	2.19	0.42
2:C:323:LYS:HD2	3:E:78:ARG:HD2	2.01	0.42
1:A:323:LYS:HE2	1:A:324:TYR:CZ	2.54	0.42
1:A:306:ASP:O	1:A:310:TYR:HB2	2.18	0.42
1:B:460:GLU:HG2	2:D:77:HIS:CE1	2.54	0.42
1:B:489:ARG:HG3	1:B:494:THR:O	2.20	0.42
1:B:260:ASP:OD2	1:B:262:ALA:HB3	2.19	0.42
1:A:403:ILE:HG22	1:A:405:LEU:HB2	2.01	0.42

*Continued on next page...*

*Continued from previous page...*

Atom-1	Atom-2	Interatomic distance (Å)	Clash overlap (Å)
1:A:246:HIS:N	1:A:246:HIS:CD2	2.87	0.42
1:B:246:HIS:N	1:B:246:HIS:CD2	2.88	0.42
2:C:336:MET:CE	2:C:356:LEU:HD21	2.49	0.42
1:A:108:ASN:O	1:A:111:GLU:HB3	2.20	0.42
2:D:385:LEU:O	2:D:387:GLY:N	2.52	0.42
2:C:81:PRO:HB3	7:C:748:HOH:O	2.19	0.42
3:F:88:LYS:HB2	3:F:127:TYR:CE2	2.54	0.42
1:A:125:TRP:HE1	2:C:161:ASN:HD22	1.64	0.42
1:A:283:THR:HB	1:A:284:PRO:CD	2.50	0.42
1:A:403:ILE:CG2	1:A:405:LEU:HB2	2.50	0.42
1:A:171:ALA:O	1:A:175:ARG:HB3	2.20	0.42
2:D:385:LEU:HA	2:D:385:LEU:HD12	1.87	0.42
2:D:263:GLU:HB3	2:D:355:SER:HB2	2.01	0.42
2:D:153:LEU:O	2:D:153:LEU:HD12	2.19	0.42
2:D:145:ILE:O	2:D:149:TRP:HB3	2.19	0.42
1:B:125:TRP:HE1	2:D:161:ASN:ND2	2.17	0.42
1:A:521:ASN:HA	1:A:522:PRO:HD2	1.93	0.42
1:A:18:ARG:HG2	1:A:18:ARG:O	2.19	0.42
2:C:75:LYS:HB3	2:C:80:ARG:O	2.19	0.42
1:B:23:VAL:HB	2:D:195:LEU:HD11	2.01	0.41
2:C:50:GLU:OE1	2:C:99:ARG:NH1	2.53	0.41
3:F:25:LEU:HD22	3:F:68:LYS:HA	2.01	0.41
1:B:227:ASN:HD21	1:B:296:PHE:N	2.08	0.41
1:B:460:GLU:HB3	1:B:463:ARG:HG3	2.01	0.41
2:D:376:ASP:HB3	2:D:379:GLN:HB2	2.01	0.41
2:D:54:VAL:HG12	2:D:55:TYR:CD2	2.55	0.41
1:B:367:GLU:HG3	7:B:1241:HOH:O	2.20	0.41
1:B:405:LEU:HA	1:B:405:LEU:HD12	1.85	0.41
2:D:312:TYR:O	2:D:316:VAL:HG23	2.20	0.41
2:D:308:GLU:HG3	2:D:308:GLU:O	2.20	0.41
1:A:268:ASN:HD21	1:A:327:GLU:H	1.67	0.41
3:E:165:HIS:CE1	3:E:167:GLN:HG3	2.55	0.41
1:B:266:TYR:HD2	3:F:144:ASN:CB	2.33	0.41
1:A:476:ARG:HH11	1:A:476:ARG:HG3	1.85	0.41
2:D:363:TRP:O	2:D:363:TRP:CG	2.73	0.41
1:A:49:LYS:CD	3:E:144:ASN:HD22	2.33	0.41
2:D:357:TYR:CE1	2:D:381:VAL:HG11	2.55	0.41
1:B:495:LEU:HD21	1:B:509:LEU:HA	2.03	0.41
1:B:372:PHE:HB3	1:B:379:TRP:CD2	2.56	0.41
1:B:460:GLU:N	1:B:461:PRO:HD3	2.36	0.41
1:A:109:PHE:O	1:A:112:VAL:HG12	2.20	0.41

*Continued on next page...*

*Continued from previous page...*

Atom-1	Atom-2	Interatomic distance (Å)	Clash overlap (Å)
1:A:171:ALA:O	1:A:175:ARG:HD2	2.21	0.41
3:F:95:VAL:O	3:F:99:ASN:ND2	2.54	0.41
1:A:76:GLU:HG2	1:B:76:GLU:OE2	2.20	0.41
2:D:306:ASP:HA	2:D:307:PRO:HD3	1.90	0.41
3:E:33:LYS:O	3:E:37:MET:HG2	2.21	0.41
1:B:376:TYR:O	1:B:379:TRP:HB2	2.21	0.41
1:A:118:ILE:HG12	1:A:144:GLU:HB2	2.03	0.41
2:D:82:SER:O	2:D:168:ARG:NH2	2.42	0.41
1:B:313:TRP:O	1:B:315:GLY:N	2.54	0.41
1:B:286:LEU:HD23	1:B:286:LEU:HA	1.91	0.41
1:A:321:LEU:O	1:A:326:VAL:HB	2.20	0.41
1:A:425:PHE:CE2	1:A:449:SER:HB3	2.55	0.41
1:A:479:SER:O	1:A:509:LEU:HD11	2.21	0.41
2:D:169:GLU:O	2:D:170:ALA:C	2.59	0.41
2:D:156:GLU:HA	2:D:156:GLU:OE2	2.21	0.41
1:B:174:THR:HG21	1:B:496:ILE:CD1	2.51	0.41
1:A:114:GLU:CD	1:A:147:HIS:HB3	2.41	0.41
1:B:321:LEU:HB3	1:B:326:VAL:HG21	2.03	0.41
1:A:361:LEU:CD2	6:A:1175:3BB:H41	2.51	0.41
1:A:415:ILE:HB	6:A:1174:3BB:H31	2.03	0.41
1:A:117:ALA:HA	1:A:120:ALA:HB3	2.02	0.41
3:E:59:LYS:HD3	3:E:59:LYS:HA	1.77	0.41
2:C:54:VAL:O	2:C:55:TYR:HB2	2.20	0.41
1:A:44:THR:HG22	1:A:45:LYS:N	2.36	0.40
1:A:354:TRP:CG	1:A:355:PRO:HD3	2.56	0.40
2:D:137:ASN:HA	2:D:138:PRO:HD3	1.89	0.40
3:E:130:ASP:O	3:E:133:ARG:HB3	2.21	0.40
1:A:123:MET:HB2	2:C:168:ARG:HD3	2.03	0.40
3:E:27:LYS:HE3	3:E:27:LYS:HB2	1.97	0.40
1:B:184:MET:CE	1:B:187:VAL:HG23	2.52	0.40
1:A:186:ARG:HD3	1:A:186:ARG:C	2.42	0.40
1:A:278:GLN:NE2	1:A:282:PHE:HE2	2.19	0.40
3:F:24:THR:HG22	3:F:26:GLU:HB3	2.03	0.40
1:A:37:TRP:O	1:A:42:ASN:ND2	2.54	0.40
2:D:197:ARG:HB3	2:D:197:ARG:NH1	2.36	0.40
1:A:444:GLU:OE1	1:A:444:GLU:HA	2.21	0.40
1:A:504:ASP:O	1:A:505:LYS:HB2	2.21	0.40
7:B:1226:HOH:O	2:D:7:ARG:HD2	2.20	0.40
2:D:323:LYS:HB2	3:F:78:ARG:NH1	2.35	0.40
2:C:211:THR:O	2:C:214:PRO:HD2	2.21	0.40
1:A:286:LEU:HD22	1:A:290:PHE:CE1	2.56	0.40

*Continued on next page...*

Continued from previous page...

Atom-1	Atom-2	Interatomic distance (Å)	Clash overlap (Å)
2:C:262:ARG:HA	2:C:266:GLN:HB3	2.02	0.40
2:D:326:GLU:CB	2:D:327:PRO:HD3	2.52	0.40
3:F:153:GLU:CD	3:F:153:GLU:H	2.25	0.40
1:B:462:GLU:N	1:B:462:GLU:OE1	2.47	0.40
1:A:413:HIS:CD2	1:A:429:LEU:HB2	2.57	0.40
3:F:76:ASP:C	3:F:78:ARG:N	2.75	0.40
1:B:244:LEU:HA	1:B:247:MET:HG3	2.03	0.40
2:C:33:ASN:HD22	2:C:33:ASN:N	2.19	0.40
1:A:188:PHE:CE1	1:A:282:PHE:CZ	3.08	0.40
1:B:125:TRP:C	1:B:125:TRP:CD1	2.95	0.40
1:B:207:VAL:O	1:B:211:CYS:HB3	2.20	0.40
1:A:349:LEU:O	1:A:353:LEU:HD12	2.21	0.40
2:D:98:HIS:CD2	2:D:99:ARG:H	2.40	0.40
1:A:469:ILE:HG13	1:A:470:PHE:N	2.37	0.40

There are no symmetry-related clashes.

## 5.3 Torsion angles [i](#)

### 5.3.1 Protein backbone [i](#)

In the following table, the Percentiles column shows the percent Ramachandran outliers of the chain as a percentile score with respect to all X-ray entries followed by that with respect to entries of similar resolution.

The Analysed column shows the number of residues for which the backbone conformation was analysed, and the total number of residues.

Mol	Chain	Analysed	Favoured	Allowed	Outliers	Percentiles	
1	A	508/527 (96%)	481 (95%)	22 (4%)	5 (1%)	19	28
1	B	508/527 (96%)	463 (91%)	39 (8%)	6 (1%)	16	23
2	C	386/389 (99%)	373 (97%)	12 (3%)	1 (0%)	46	63
2	D	386/389 (99%)	357 (92%)	23 (6%)	6 (2%)	12	16
3	E	164/170 (96%)	158 (96%)	6 (4%)	0	100	100
3	F	164/170 (96%)	142 (87%)	18 (11%)	4 (2%)	7	7
All	All	2116/2172 (97%)	1974 (93%)	120 (6%)	22 (1%)	19	28

All (22) Ramachandran outliers are listed below:

Mol	Chain	Res	Type
1	B	40	LYS
1	A	315	GLY
1	B	311	GLU
1	B	316	ILE
2	D	64	ALA
2	D	221	GLY
2	D	386	ALA
2	D	141	ARG
2	D	205	PRO
3	F	122	ILE
1	A	94	ARG
1	B	284	PRO
2	C	64	ALA
3	F	44	ARG
3	F	74	GLU
1	A	311	GLU
1	B	94	ARG
1	B	314	GLY
2	D	251	VAL
1	A	316	ILE
3	F	50	ASP
1	A	20	PRO

### 5.3.2 Protein sidechains ⓘ

In the following table, the Percentiles column shows the percent sidechain outliers of the chain as a percentile score with respect to all X-ray entries followed by that with respect to entries of similar resolution.

The Analysed column shows the number of residues for which the sidechain conformation was analysed, and the total number of residues.

Mol	Chain	Analysed	Rotameric	Outliers	Percentiles	
1	A	423/442 (96%)	404 (96%)	19 (4%)	34	52
1	B	422/442 (96%)	409 (97%)	13 (3%)	47	69
2	C	315/323 (98%)	307 (98%)	8 (2%)	55	76
2	D	312/323 (97%)	302 (97%)	10 (3%)	46	68
3	E	143/147 (97%)	140 (98%)	3 (2%)	61	80
3	F	142/147 (97%)	138 (97%)	4 (3%)	51	72
All	All	1757/1824 (96%)	1700 (97%)	57 (3%)	46	68



All (57) residues with a non-rotameric sidechain are listed below:

Mol	Chain	Res	Type
1	A	30	ARG
1	A	38	ASP
1	A	43	ARG
1	A	54	ASN
1	A	90	ASN
1	A	112	VAL
1	A	125	TRP
1	A	146	ARG
1	A	175	ARG
1	A	186	ARG
1	A	279	GLN
1	A	286	LEU
1	A	302	VAL
1	A	338	ASP
1	A	353	LEU
1	A	437	ARG
1	A	442	ASN
1	A	467	GLN
1	A	516	ASN
1	B	30	ARG
1	B	43	ARG
1	B	90	ASN
1	B	110	LEU
1	B	125	TRP
1	B	186	ARG
1	B	216	LEU
1	B	222	GLU
1	B	279	GLN
1	B	302	VAL
1	B	311	GLU
1	B	334	ASP
1	B	435	THR
2	C	33	ASN
2	C	117	TRP
2	C	139	THR
2	C	153	LEU
2	C	173	ASP
2	C	356	LEU
2	C	377	ARG
2	C	378	ASP
2	D	35	MET
2	D	80	ARG

*Continued on next page...*

*Continued from previous page...*

Mol	Chain	Res	Type
2	D	153	LEU
2	D	168	ARG
2	D	173	ASP
2	D	205	PRO
2	D	275	ASN
2	D	301	ASN
2	D	334	ASP
2	D	385	LEU
3	E	24	THR
3	E	44	ARG
3	E	125	VAL
3	F	11	THR
3	F	23	ASN
3	F	44	ARG
3	F	164	VAL

Some sidechains can be flipped to improve hydrogen bonding and reduce clashes. All (66) such sidechains are listed below:

Mol	Chain	Res	Type
1	A	41	ASN
1	A	78	GLN
1	A	90	ASN
1	A	108	ASN
1	A	116	ASN
1	A	168	HIS
1	A	227	ASN
1	A	249	ASN
1	A	268	ASN
1	A	273	ASN
1	A	278	GLN
1	A	279	GLN
1	A	343	HIS
1	A	344	HIS
1	A	382	HIS
1	A	411	ASN
1	A	413	HIS
1	A	439	HIS
1	A	442	ASN
1	A	516	ASN
1	B	59	GLN
1	B	78	GLN
1	B	90	ASN

*Continued on next page...*

*Continued from previous page...*

Mol	Chain	Res	Type
1	B	108	ASN
1	B	133	GLN
1	B	168	HIS
1	B	227	ASN
1	B	249	ASN
1	B	268	ASN
1	B	273	ASN
1	B	278	GLN
1	B	279	GLN
1	B	343	HIS
1	B	344	HIS
1	B	382	HIS
1	B	413	HIS
1	B	439	HIS
1	B	451	GLN
1	B	527	ASN
2	C	33	ASN
2	C	98	HIS
2	C	146	ASN
2	C	161	ASN
2	C	266	GLN
2	C	285	GLN
2	C	293	GLN
2	C	296	GLN
2	C	301	ASN
2	D	98	HIS
2	D	125	GLN
2	D	155	ASN
2	D	161	ASN
2	D	266	GLN
2	D	285	GLN
2	D	301	ASN
3	E	45	ASN
3	E	111	HIS
3	E	144	ASN
3	E	165	HIS
3	F	7	HIS
3	F	23	ASN
3	F	45	ASN
3	F	99	ASN
3	F	111	HIS
3	F	144	ASN

*Continued on next page...*

*Continued from previous page...*

Mol	Chain	Res	Type
3	F	167	GLN

### 5.3.3 RNA [i](#)

There are no RNA molecules in this entry.

## 5.4 Non-standard residues in protein, DNA, RNA chains [i](#)

There are no non-standard protein/DNA/RNA residues in this entry.

## 5.5 Carbohydrates [i](#)

There are no carbohydrates in this entry.

## 5.6 Ligand geometry [i](#)

Of 16 ligands modelled in this entry, 6 are monoatomic - leaving 10 for Mogul analysis.

In the following table, the Counts columns list the number of bonds (or angles) for which Mogul statistics could be retrieved, the number of bonds (or angles) that are observed in the model and the number of bonds (or angles) that are defined in the chemical component dictionary. The Link column lists molecule types, if any, to which the group is linked. The Z score for a bond length (or angle) is the number of standard deviations the observed value is removed from the expected value. A bond length (or angle) with  $|Z| > 2$  is considered an outlier worth inspection. RMSZ is the root-mean-square of all Z scores of the bond lengths (or angles).

Mol	Type	Chain	Res	Link	Bond lengths			Bond angles		
					Counts	RMSZ	$\# Z  > 2$	Counts	RMSZ	$\# Z  > 2$
6	3BB	A	1172	4	3,5,5	0.28	0	2,5,5	1.35	0
6	3BB	A	1173	-	3,5,5	0.19	0	2,5,5	0.59	0
6	3BB	A	1174	-	3,5,5	0.24	0	2,5,5	1.14	0
6	3BB	A	1175	-	3,5,5	0.32	0	2,5,5	1.24	0
6	3BB	B	1176	4	3,5,5	0.34	0	2,5,5	1.41	0
6	3BB	B	1177	-	3,5,5	0.21	0	2,5,5	0.71	0
6	3BB	B	1178	-	3,5,5	0.34	0	2,5,5	1.36	0
6	3BB	C	508	-	3,5,5	0.32	0	2,5,5	0.27	0
6	3BB	C	510	-	3,5,5	0.37	0	2,5,5	0.23	0
6	3BB	D	509	-	3,5,5	0.35	0	2,5,5	0.31	0

In the following table, the Chirals column lists the number of chiral outliers, the number of chiral centers analysed, the number of these observed in the model and the number defined in the chemical

component dictionary. Similar counts are reported in the Torsion and Rings columns. '-' means no outliers of that kind were identified.

Mol	Type	Chain	Res	Link	Chirals	Torsions	Rings
6	3BB	A	1172	4	-	0/1/3/3	0/0/0/0
6	3BB	A	1173	-	-	0/1/3/3	0/0/0/0
6	3BB	A	1174	-	-	0/1/3/3	0/0/0/0
6	3BB	A	1175	-	-	0/1/3/3	0/0/0/0
6	3BB	B	1176	4	-	0/1/3/3	0/0/0/0
6	3BB	B	1177	-	-	0/1/3/3	0/0/0/0
6	3BB	B	1178	-	-	0/1/3/3	0/0/0/0
6	3BB	C	508	-	-	0/1/3/3	0/0/0/0
6	3BB	C	510	-	-	0/1/3/3	0/0/0/0
6	3BB	D	509	-	-	0/1/3/3	0/0/0/0

There are no bond length outliers.

There are no bond angle outliers.

There are no chirality outliers.

There are no torsion outliers.

There are no ring outliers.

6 monomers are involved in 10 short contacts:

Mol	Chain	Res	Type	Clashes	Symm-Clashes
6	A	1174	3BB	1	0
6	A	1175	3BB	3	0
6	B	1176	3BB	1	0
6	B	1178	3BB	1	0
6	C	510	3BB	2	0
6	D	509	3BB	2	0

## 5.7 Other polymers [i](#)

There are no such residues in this entry.

## 5.8 Polymer linkage issues [i](#)

There are no chain breaks in this entry.

## 6 Fit of model and data

### 6.1 Protein, DNA and RNA chains

In the following table, the column labelled ‘#RSRZ> 2’ contains the number (and percentage) of RSRZ outliers, followed by percent RSRZ outliers for the chain as percentile scores relative to all X-ray entries and entries of similar resolution. The OWAB column contains the minimum, median, 95<sup>th</sup> percentile and maximum values of the occupancy-weighted average B-factor per residue. The column labelled ‘Q< 0.9’ lists the number of (and percentage) of residues with an average occupancy less than 0.9.

Mol	Chain	Analysed	<RSRZ>	#RSRZ>2	OWAB(Å <sup>2</sup> )	Q<0.9
1	A	510/527 (96%)	-0.24	8 (1%) 74 74	20, 36, 64, 94	0
1	B	510/527 (96%)	-0.22	8 (1%) 74 74	22, 38, 74, 92	0
2	C	388/389 (99%)	-0.49	2 (0%) 91 91	15, 28, 53, 78	0
2	D	388/389 (99%)	0.13	16 (4%) 41 42	25, 47, 79, 104	0
3	E	166/170 (97%)	-0.43	1 (0%) 90 90	18, 32, 55, 86	0
3	F	166/170 (97%)	0.56	11 (6%) 22 22	40, 61, 85, 107	0
All	All	2128/2172 (97%)	-0.17	46 (2%) 65 64	15, 38, 73, 107	0

All (46) RSRZ outliers are listed below:

Mol	Chain	Res	Type	RSRZ
2	D	389	LYS	5.3
2	D	2	SER	4.6
2	C	2	SER	3.9
1	A	316	ILE	3.6
3	F	100	ALA	3.6
2	D	375	ALA	3.5
1	B	314	GLY	3.3
2	D	344	ALA	3.2
3	F	102	LYS	3.1
3	F	96	ALA	3.1
1	B	527	ASN	3.1
3	F	75	VAL	2.9
2	D	343	PRO	2.8
1	A	19	ALA	2.7
2	D	345	GLY	2.7
3	F	21	GLN	2.7
1	B	56	THR	2.7
3	F	22	LEU	2.7
2	D	374	LYS	2.6

*Continued on next page...*

*Continued from previous page...*

Mol	Chain	Res	Type	RSRZ
1	A	516	ASN	2.6
3	E	168	SER	2.5
2	D	205	PRO	2.5
3	F	154	GLU	2.5
1	B	20	PRO	2.5
2	D	203	ILE	2.5
1	A	399	SER	2.5
2	D	376	ASP	2.5
1	A	310	TYR	2.5
2	D	357	TYR	2.4
1	B	323	LYS	2.3
2	D	273	GLY	2.3
2	C	205	PRO	2.3
2	D	254	ALA	2.3
1	A	434	SER	2.2
3	F	72	PHE	2.2
3	F	23	ASN	2.2
2	D	136	MET	2.2
1	B	39	PHE	2.2
2	D	379	GLN	2.2
3	F	67	LEU	2.1
2	D	220	ASN	2.1
1	B	324	TYR	2.1
1	A	213	THR	2.1
3	F	151	PRO	2.1
1	B	317	TRP	2.0
1	A	324	TYR	2.0

## 6.2 Non-standard residues in protein, DNA, RNA chains [i](#)

There are no non-standard protein/DNA/RNA residues in this entry.

## 6.3 Carbohydrates [i](#)

There are no carbohydrates in this entry.

## 6.4 Ligands [i](#)

In the following table, the Atoms column lists the number of modelled atoms in the group and the number defined in the chemical component dictionary. LLDF column lists the quality of electron density of the group with respect to its neighbouring residues in protein, DNA or RNA chains.

The B-factors column lists the minimum, median, 95<sup>th</sup> percentile and maximum values of B factors of atoms in the group. The column labelled 'Q< 0.9' lists the number of atoms with occupancy less than 0.9.

Mol	Type	Chain	Res	Atoms	RSCC	RSR	LLDF	B-factors(Å <sup>2</sup> )	Q<0.9
6	3BB	C	510	6/6	0.79	0.37	14.76	95,97,99,102	0
6	3BB	B	1177	6/6	0.83	0.38	4.69	105,107,109,112	0
6	3BB	B	1178	6/6	0.92	0.31	4.25	62,65,66,71	0
6	3BB	A	1174	6/6	0.83	0.26	3.98	84,90,92,98	0
6	3BB	A	1173	6/6	0.88	0.27	3.68	101,102,102,107	0
6	3BB	A	1175	6/6	0.88	0.31	3.51	69,72,75,81	0
6	3BB	B	1176	6/6	0.92	0.20	2.44	104,112,114,121	0
6	3BB	D	509	6/6	0.81	0.29	2.44	91,93,94,95	0
6	3BB	A	1172	6/6	0.92	0.18	1.10	78,82,84,90	0
6	3BB	C	508	6/6	0.92	0.16	0.07	91,96,97,102	0
5	CA	A	673	1/1	0.93	0.10	-1.13	56,56,56,56	0
4	FE	A	1171	1/1	0.99	0.07	-2.01	37,37,37,37	0
4	FE	A	1170	1/1	1.00	0.07	-2.16	39,39,39,39	0
4	FE	B	1174	1/1	0.98	0.07	-2.48	44,44,44,44	0
4	FE	B	1175	1/1	0.99	0.07	-3.45	37,37,37,37	0
5	CA	C	674	1/1	0.96	0.10	-	48,48,48,48	0

## 6.5 Other polymers [i](#)

There are no such residues in this entry.