



Full wwPDB X-ray Structure Validation Report ⓘ

Feb 19, 2016 – 08:12 PM GMT

PDB ID : 4XXK
Title : Crystal structure of the Semet-derivative of the Bilin-binding domain of phy-
cobilisome core-membrane linker ApcE
Authors : Tang, K.; Ding, W.-L.; Hoppner, A.; Gartner, W.; Zhao, K.-H.
Deposited on : 2015-01-30
Resolution : 2.97 Å(reported)

This is a Full wwPDB X-ray Structure Validation Report for a publicly released PDB entry.
We welcome your comments at validation@mail.wwpdb.org
A user guide is available at
<http://wwpdb.org/validation/2016/XrayValidationReportHelp>
with specific help available everywhere you see the ⓘ symbol.

The following versions of software and data (see [references ⓘ](#)) were used in the production of this report:

MolProbity : 4.02b-467
Mogul : 1.7.1 (RC1), CSD as537be (2016)
Xtriage (Phenix) : 1.9-1692
EDS : rb-20026982
Percentile statistics : 20151230.v01 (using entries in the PDB archive December 30th 2015)
Refmac : 5.8.0135
CCP4 : 6.5.0
Ideal geometry (proteins) : Engh & Huber (2001)
Ideal geometry (DNA, RNA) : Parkinson et al. (1996)
Validation Pipeline (wwPDB-VP) : rb-20026982

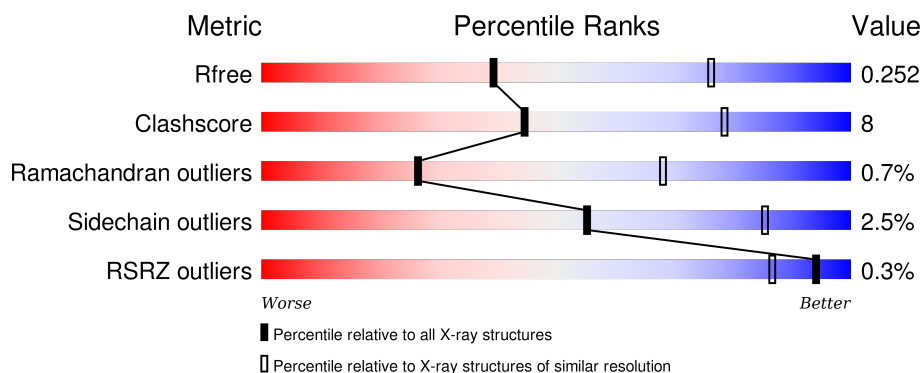
1 Overall quality at a glance

The following experimental techniques were used to determine the structure:

X-RAY DIFFRACTION

The reported resolution of this entry is 2.97 Å.

Percentile scores (ranging between 0-100) for global validation metrics of the entry are shown in the following graphic. The table shows the number of entries on which the scores are based.



Metric	Whole archive (#Entries)	Similar resolution (#Entries, resolution range(Å))
R_{free}	91344	1992 (3.00-2.96)
Clashscore	102246	2349 (3.00-2.96)
Ramachandran outliers	100387	2274 (3.00-2.96)
Sidechain outliers	100360	2277 (3.00-2.96)
RSRZ outliers	91569	2007 (3.00-2.96)

The table below summarises the geometric issues observed across the polymeric chains and their fit to the electron density. The red, orange, yellow and green segments on the lower bar indicate the fraction of residues that contain outliers for ≥ 3 , 2, 1 and 0 types of geometric quality criteria. A grey segment represents the fraction of residues that are not modelled. The numeric value for each fraction is indicated below the corresponding segment, with a dot representing fractions $\leq 5\%$. The upper red bar (where present) indicates the fraction of residues that have poor fit to the electron density. The numeric value is given above the bar.

Mol	Chain	Length	Quality of chain
1	A	157	
1	B	157	

The following table lists non-polymeric compounds, carbohydrate monomers and non-standard residues in protein, DNA, RNA chains that are outliers for geometric or electron-density-fit criteria:

Mol	Type	Chain	Res	Chirality	Geometry	Clashes	Electron density
2	CYC	B	301	-	-	-	X

2 Entry composition

There are 2 unique types of molecules in this entry. The entry contains 2403 atoms, of which 0 are hydrogens and 0 are deuteriums.

In the tables below, the ZeroOcc column contains the number of atoms modelled with zero occupancy, the AltConf column contains the number of residues with at least one atom in alternate conformation and the Trace column contains the number of residues modelled with at most 2 atoms.

- Molecule 1 is a protein called Phycobiliprotein ApcE.

Mol	Chain	Residues	Atoms						ZeroOcc	AltConf	Trace
1	A	149	Total	C	N	O	S	Se	0	0	0
			1166	740	199	224	1	2			
1	B	147	Total	C	N	O	S	Se	0	0	0
			1151	729	197	222	1	2			

There are 26 discrepancies between the modelled and reference sequences:

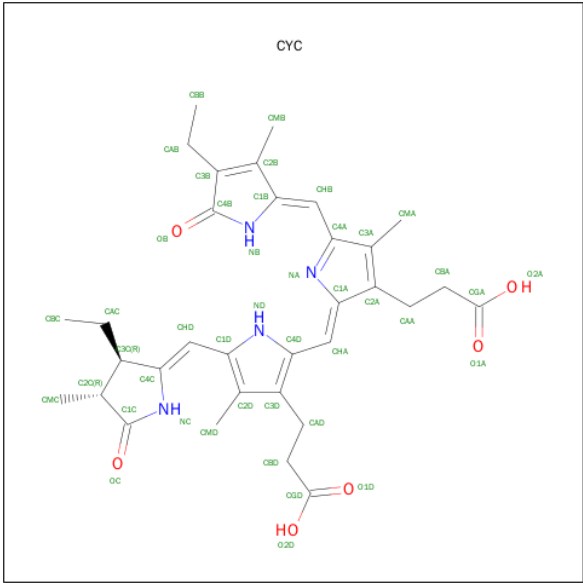
Chain	Residue	Modelled	Actual	Comment	Reference
A	19	MSE	-	expression tag	UNP P80559
A	77	GLN	-	linker	UNP P80559
A	78	LYS	-	linker	UNP P80559
A	79	ILE	-	linker	UNP P80559
A	80	GLU	-	linker	UNP P80559
A	241	LEU	-	expression tag	UNP P80559
A	242	GLU	-	expression tag	UNP P80559
A	243	HIS	-	expression tag	UNP P80559
A	244	HIS	-	expression tag	UNP P80559
A	245	HIS	-	expression tag	UNP P80559
A	246	HIS	-	expression tag	UNP P80559
A	247	HIS	-	expression tag	UNP P80559
A	248	HIS	-	expression tag	UNP P80559
B	19	MSE	-	expression tag	UNP P80559
B	77	GLN	-	linker	UNP P80559
B	78	LYS	-	linker	UNP P80559
B	79	ILE	-	linker	UNP P80559
B	80	GLU	-	linker	UNP P80559
B	241	LEU	-	expression tag	UNP P80559
B	242	GLU	-	expression tag	UNP P80559
B	243	HIS	-	expression tag	UNP P80559
B	244	HIS	-	expression tag	UNP P80559
B	245	HIS	-	expression tag	UNP P80559
B	246	HIS	-	expression tag	UNP P80559
B	247	HIS	-	expression tag	UNP P80559

Continued on next page...

Continued from previous page...

Chain	Residue	Modelled	Actual	Comment	Reference
B	248	HIS	-	expression tag	UNP P80559

- Molecule 2 is PHYCOCYANOBILIN (three-letter code: CYC) (formula: C₃₃H₄₀N₄O₆).




Mol	Chain	Residues	Atoms				ZeroOcc	AltConf
2	A	1	Total	C	N	O	0	0
			43	33	4	6		
2	B	1	Total	C	N	O	0	0
			43	33	4	6		

3 Residue-property plots [i](#)


These plots are drawn for all protein, RNA and DNA chains in the entry. The first graphic for a chain summarises the proportions of errors displayed in the second graphic. The second graphic shows the sequence view annotated by issues in geometry and electron density. Residues are color-coded according to the number of geometric quality criteria for which they contain at least one outlier: green = 0, yellow = 1, orange = 2 and red = 3 or more. A red dot above a residue indicates a poor fit to the electron density ($RSRZ > 2$). Stretches of 2 or more consecutive residues without any outlier are shown as a green connector. Residues present in the sample, but not in the model, are shown in grey.

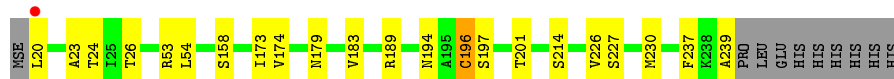
• Molecule 1: Phycobiliprotein ApcE

Chain A:  81% 13% • 5%



• Molecule 1: Phycobiliprotein ApcE

Chain B:  80% 13% • 6%



4 Data and refinement statistics

Property	Value	Source
Space group	P 1 21 1	Depositor
Cell constants a, b, c, α , β , γ	36.98Å 66.59Å 81.42Å 90.00° 91.07° 90.00°	Depositor
Resolution (Å)	19.49 – 2.97 19.49 – 2.97	Depositor EDS
% Data completeness (in resolution range)	99.5 (19.49-2.97) 99.5 (19.49-2.97)	Depositor EDS
R_{merge}	(Not available)	Depositor
R_{sym}	(Not available)	Depositor
$\langle I/\sigma(I) \rangle$ ¹	16.36 (at 2.98Å)	Xtriage
Refinement program	PHENIX (phenix.refine: 1.9_1692)	Depositor
R, R_{free}	0.176 , 0.252 0.187 , 0.252	Depositor DCC
R_{free} test set	576 reflections (7.53%)	DCC
Wilson B-factor (Å ²)	42.2	Xtriage
Anisotropy	0.110	Xtriage
Bulk solvent k_{sol} (e/Å ³), B_{sol} (Å ²)	0.27 , 14.9	EDS
Estimated twinning fraction	0.043 for h,-k,-l	Xtriage
L-test for twinning ²	$\langle L \rangle = 0.49$, $\langle L^2 \rangle = 0.32$	Xtriage
Outliers	0 of 8223 reflections	Xtriage
F_o, F_c correlation	0.93	EDS
Total number of atoms	2403	wwPDB-VP
Average B, all atoms (Å ²)	29.0	wwPDB-VP

Xtriage's analysis on translational NCS is as follows: *The largest off-origin peak in the Patterson function is 8.80% of the height of the origin peak. No significant pseudotranslation is detected.*

¹Intensities estimated from amplitudes.

²Theoretical values of $\langle |L| \rangle$, $\langle L^2 \rangle$ for acentric reflections are 0.5, 0.375 respectively for untwinned datasets, and 0.333, 0.2 for perfectly twinned datasets.

5 Model quality

5.1 Standard geometry

Bond lengths and bond angles in the following residue types are not validated in this section: CYC

The Z score for a bond length (or angle) is the number of standard deviations the observed value is removed from the expected value. A bond length (or angle) with $|Z| > 5$ is considered an outlier worth inspection. RMSZ is the root-mean-square of all Z scores of the bond lengths (or angles).

Mol	Chain	Bond lengths		Bond angles	
		RMSZ	$\# Z > 5$	RMSZ	$\# Z > 5$
1	A	0.49	0/1179	0.59	0/1591
1	B	0.48	0/1163	0.57	0/1568
All	All	0.48	0/2342	0.58	0/3159

There are no bond length outliers.

There are no bond angle outliers.

There are no chirality outliers.

There are no planarity outliers.

5.2 Too-close contacts

In the following table, the Non-H and H(model) columns list the number of non-hydrogen atoms and hydrogen atoms in the chain respectively. The H(added) column lists the number of hydrogen atoms added and optimized by MolProbity. The Clashes column lists the number of clashes within the asymmetric unit, whereas Symm-Clashes lists symmetry related clashes.

Mol	Chain	Non-H	H(model)	H(added)	Clashes	Symm-Clashes
1	A	1166	0	1183	14	0
1	B	1151	0	1165	17	0
2	A	43	0	36	5	0
2	B	43	0	36	10	0
All	All	2403	0	2420	38	0

The all-atom clashscore is defined as the number of clashes found per 1000 atoms (including hydrogen atoms). The all-atom clashscore for this structure is 8.

All (38) close contacts within the same asymmetric unit are listed below, sorted by their clash magnitude.

Atom-1	Atom-2	Interatomic distance (Å)	Clash overlap (Å)
1:B:201:THR:OG1	2:B:301:CYC:HBC2	1.62	1.00
2:A:301:CYC:HMA1	2:A:301:CYC:HB	1.33	0.92
2:B:301:CYC:HB	2:B:301:CYC:HMA1	1.38	0.88
2:A:301:CYC:HMA1	2:A:301:CYC:NB	2.01	0.76
1:B:201:THR:HG1	2:B:301:CYC:HBC2	1.57	0.68
2:B:301:CYC:HMA1	2:B:301:CYC:NB	2.10	0.64
2:A:301:CYC:CMA	2:A:301:CYC:HB	2.11	0.62
1:B:158:SER:HB3	2:B:301:CYC:HMC3	1.82	0.61
1:A:190:GLU:HB3	1:A:241:LEU:HD22	1.83	0.61
1:A:53:ARG:NH1	1:A:174:VAL:O	2.35	0.60
1:A:202:ILE:O	1:A:206:GLN:HG2	2.04	0.58
1:A:190:GLU:HB3	1:A:241:LEU:CD2	2.38	0.53
1:A:205:LEU:HD23	1:A:208:ILE:HD12	1.91	0.52
1:B:197:SER:O	2:B:301:CYC:HBC1	2.10	0.52
1:A:160:ARG:NH1	1:A:161:ASP:OD1	2.44	0.51
1:B:53:ARG:HD2	1:B:173:ILE:O	2.11	0.50
1:B:201:THR:HG1	2:B:301:CYC:CBC	2.24	0.49
1:B:53:ARG:NH1	1:B:174:VAL:O	2.46	0.48
1:B:189:ARG:NH1	1:B:239:ALA:HB3	2.28	0.48
1:B:23:ALA:HA	1:B:26:THR:HG22	1.94	0.48
1:B:189:ARG:HH12	1:B:239:ALA:HB3	1.78	0.47
1:A:190:GLU:HG3	1:A:191:ILE:N	2.29	0.47
1:A:185:THR:HA	1:A:188:LEU:HD22	1.96	0.47
1:A:53:ARG:HD2	1:A:173:ILE:O	2.15	0.46
1:A:20:LEU:N	1:A:23:ALA:H	2.13	0.46
1:B:201:THR:OG1	2:B:301:CYC:CBC	2.49	0.46
1:A:226:VAL:O	1:A:230:MSE:HG2	2.15	0.46
1:A:205:LEU:HA	1:A:208:ILE:HD12	1.97	0.45
1:B:179:ASN:O	1:B:183:VAL:HG23	2.17	0.44
1:B:196:CYS:SG	2:B:301:CYC:HHD	2.58	0.43
1:B:20:LEU:HB3	1:B:23:ALA:HB3	2.00	0.43
1:A:164:TRP:CD1	1:A:167:ARG:NH1	2.88	0.42
2:B:301:CYC:HBC2	2:B:301:CYC:H2C	1.91	0.42
1:B:226:VAL:O	1:B:230:MSE:HG2	2.20	0.41
1:B:189:ARG:HD3	1:B:237:PHE:O	2.21	0.40
2:A:301:CYC:HBA1	2:A:301:CYC:HMA3	2.03	0.40
1:B:54:LEU:HD23	1:B:174:VAL:HG22	2.02	0.40
1:A:160:ARG:NH2	2:A:301:CYC:O2A	2.54	0.40

There are no symmetry-related clashes.

5.3 Torsion angles

5.3.1 Protein backbone

In the following table, the Percentiles column shows the percent Ramachandran outliers of the chain as a percentile score with respect to all X-ray entries followed by that with respect to entries of similar resolution.

The Analysed column shows the number of residues for which the backbone conformation was analysed, and the total number of residues.

Mol	Chain	Analysed	Favoured	Allowed	Outliers	Percentiles	
1	A	147/157 (94%)	144 (98%)	2 (1%)	1 (1%)	26	68
1	B	145/157 (92%)	141 (97%)	3 (2%)	1 (1%)	26	68
All	All	292/314 (93%)	285 (98%)	5 (2%)	2 (1%)	26	68

All (2) Ramachandran outliers are listed below:

Mol	Chain	Res	Type
1	A	196	CYS
1	B	196	CYS

5.3.2 Protein sidechains

In the following table, the Percentiles column shows the percent sidechain outliers of the chain as a percentile score with respect to all X-ray entries followed by that with respect to entries of similar resolution.

The Analysed column shows the number of residues for which the sidechain conformation was analysed, and the total number of residues.

Mol	Chain	Analysed	Rotameric	Outliers	Percentiles	
1	A	122/127 (96%)	120 (98%)	2 (2%)	70	91
1	B	120/127 (94%)	116 (97%)	4 (3%)	45	80
All	All	242/254 (95%)	236 (98%)	6 (2%)	55	85

All (6) residues with a non-rotameric sidechain are listed below:

Mol	Chain	Res	Type
1	A	221	GLU
1	A	241	LEU
1	B	24	THR
1	B	194	ASN

Continued on next page...

Continued from previous page...

Mol	Chain	Res	Type
1	B	214	SER
1	B	227	SER

Some sidechains can be flipped to improve hydrogen bonding and reduce clashes. All (2) such sidechains are listed below:

Mol	Chain	Res	Type
1	A	30	GLN
1	B	58	GLN

5.3.3 RNA [i](#)

There are no RNA molecules in this entry.

5.4 Non-standard residues in protein, DNA, RNA chains [i](#)

There are no non-standard protein/DNA/RNA residues in this entry.

5.5 Carbohydrates [i](#)

There are no carbohydrates in this entry.

5.6 Ligand geometry [i](#)

2 ligands are modelled in this entry.

In the following table, the Counts columns list the number of bonds (or angles) for which Mogul statistics could be retrieved, the number of bonds (or angles) that are observed in the model and the number of bonds (or angles) that are defined in the chemical component dictionary. The Link column lists molecule types, if any, to which the group is linked. The Z score for a bond length (or angle) is the number of standard deviations the observed value is removed from the expected value. A bond length (or angle) with $|Z| > 2$ is considered an outlier worth inspection. RMSZ is the root-mean-square of all Z scores of the bond lengths (or angles).

Mol	Type	Chain	Res	Link	Bond lengths			Bond angles		
					Counts	RMSZ	$\# Z > 2$	Counts	RMSZ	$\# Z > 2$
2	CYC	A	301	1	35,46,46	3.39	15 (42%)	44,67,67	4.25	23 (52%)
2	CYC	B	301	-	35,46,46	3.41	16 (45%)	44,67,67	4.17	22 (50%)

In the following table, the Chirals column lists the number of chiral outliers, the number of chiral

centers analysed, the number of these observed in the model and the number defined in the chemical component dictionary. Similar counts are reported in the Torsion and Rings columns. '-' means no outliers of that kind were identified.

Mol	Type	Chain	Res	Link	Chirals	Torsions	Rings
2	CYC	A	301	1	-	2/21/74/74	0/4/4/4
2	CYC	B	301	-	-	2/21/74/74	0/4/4/4

All (31) bond length outliers are listed below:

Mol	Chain	Res	Type	Atoms	Z	Observed(Å)	Ideal(Å)
2	B	301	CYC	C1C-NC	-6.45	1.29	1.37
2	A	301	CYC	C2C-C1C	-5.90	1.46	1.52
2	A	301	CYC	C1C-NC	-5.82	1.30	1.37
2	A	301	CYC	C1B-NB	-4.25	1.30	1.37
2	A	301	CYC	C4C-NC	-4.09	1.28	1.37
2	B	301	CYC	C1B-NB	-3.73	1.31	1.37
2	B	301	CYC	C4C-NC	-3.49	1.29	1.37
2	B	301	CYC	C2C-C1C	-3.35	1.48	1.52
2	A	301	CYC	C1A-NA	-3.33	1.31	1.38
2	B	301	CYC	C4B-NB	-3.22	1.30	1.37
2	A	301	CYC	C4B-NB	-2.90	1.31	1.37
2	B	301	CYC	C1A-NA	-2.62	1.32	1.38
2	B	301	CYC	CHD-C4C	-2.60	1.31	1.38
2	A	301	CYC	OC-C1C	-2.45	1.18	1.23
2	B	301	CYC	OC-C1C	-2.37	1.18	1.23
2	A	301	CYC	CHD-C4C	-2.16	1.32	1.38
2	B	301	CYC	CMD-C2D	-2.09	1.47	1.51
2	A	301	CYC	C4D-CHA	2.10	1.48	1.40
2	B	301	CYC	C4D-CHA	2.14	1.48	1.40
2	B	301	CYC	CHB-C4A	2.18	1.45	1.40
2	B	301	CYC	C3D-C2D	2.59	1.45	1.37
2	A	301	CYC	CHB-C4A	2.61	1.46	1.40
2	A	301	CYC	C3D-C2D	2.82	1.46	1.37
2	A	301	CYC	CHB-C1B	3.87	1.46	1.37
2	A	301	CYC	C2A-C3A	3.90	1.45	1.36
2	B	301	CYC	CHB-C1B	3.94	1.47	1.37
2	B	301	CYC	C3B-C2B	4.09	1.45	1.36
2	B	301	CYC	C2A-C3A	4.19	1.45	1.36
2	A	301	CYC	C3B-C2B	4.34	1.46	1.36
2	A	301	CYC	CHA-C1A	13.36	1.47	1.35
2	B	301	CYC	CHA-C1A	14.51	1.48	1.35

All (45) bond angle outliers are listed below:

Mol	Chain	Res	Type	Atoms	Z	Observed(°)	Ideal(°)
2	A	301	CYC	C4B-C3B-C2B	-15.60	99.23	108.04
2	B	301	CYC	C4B-C3B-C2B	-14.79	99.69	108.04
2	A	301	CYC	OB-C4B-C3B	-7.27	119.11	128.11
2	B	301	CYC	CHB-C4A-NA	-6.75	112.29	124.89
2	A	301	CYC	CHB-C4A-NA	-5.99	113.71	124.89
2	B	301	CYC	OB-C4B-C3B	-5.52	121.27	128.11
2	B	301	CYC	C1B-NB-C4B	-5.48	102.80	110.73
2	A	301	CYC	C1B-NB-C4B	-5.23	103.16	110.73
2	A	301	CYC	CHA-C1A-NA	-4.98	119.88	128.71
2	B	301	CYC	C1B-C2B-C3B	-3.92	103.72	107.82
2	A	301	CYC	C4A-C3A-C2A	-3.82	102.02	106.43
2	B	301	CYC	CHA-C1A-NA	-3.77	122.03	128.71
2	A	301	CYC	OC-C1C-C2C	-3.60	123.40	126.30
2	A	301	CYC	C1B-C2B-C3B	-3.45	104.21	107.82
2	B	301	CYC	C4A-C3A-C2A	-3.44	102.46	106.43
2	B	301	CYC	CHB-C1B-C2B	-3.02	121.05	126.92
2	B	301	CYC	C1A-C2A-C3A	-2.82	103.73	106.80
2	A	301	CYC	C1A-C2A-C3A	-2.70	103.87	106.80
2	B	301	CYC	OC-C1C-C2C	-2.19	124.53	126.30
2	A	301	CYC	CHB-C1B-NB	-2.18	121.47	126.15
2	A	301	CYC	CBD-CAD-C3D	-2.15	108.71	112.49
2	B	301	CYC	C1B-CHB-C4A	2.02	133.12	128.03
2	B	301	CYC	CMB-C2B-C3B	2.26	132.41	125.91
2	B	301	CYC	CMD-C2D-C3D	2.29	130.02	125.24
2	A	301	CYC	C2A-C1A-NA	2.32	113.52	109.98
2	B	301	CYC	CMA-C3A-C4A	2.33	128.79	125.06
2	A	301	CYC	CBC-CAC-C3C	2.38	119.32	113.43
2	B	301	CYC	C2C-C1C-NC	2.59	110.87	108.31
2	A	301	CYC	C2C-C1C-NC	2.62	110.90	108.31
2	B	301	CYC	CAB-C3B-C2B	2.65	132.07	127.51
2	A	301	CYC	CAA-C2A-C1A	2.66	129.67	125.00
2	A	301	CYC	CMD-C2D-C3D	2.82	131.13	125.24
2	B	301	CYC	CBC-CAC-C3C	2.91	120.64	113.43
2	A	301	CYC	CHB-C4A-C3A	2.92	131.70	124.71
2	A	301	CYC	CAB-C3B-C2B	2.94	132.57	127.51
2	B	301	CYC	CHB-C4A-C3A	3.43	132.91	124.71
2	A	301	CYC	CMA-C3A-C4A	3.65	130.89	125.06
2	A	301	CYC	C3C-C4C-NC	3.80	111.59	107.94
2	A	301	CYC	C2B-C1B-NB	5.73	115.03	106.94
2	B	301	CYC	C2B-C1B-NB	6.03	115.45	106.94
2	B	301	CYC	C3C-C4C-NC	6.60	114.28	107.94
2	B	301	CYC	CAB-C3B-C4B	7.54	128.16	121.47
2	A	301	CYC	CAB-C3B-C4B	7.57	128.19	121.47

Continued on next page...

Continued from previous page...

Mol	Chain	Res	Type	Atoms	Z	Observed(°)	Ideal(°)
2	B	301	CYC	C3B-C4B-NB	12.61	118.29	106.76
2	A	301	CYC	C3B-C4B-NB	12.63	118.31	106.76

There are no chirality outliers.

All (4) torsion outliers are listed below:

Mol	Chain	Res	Type	Atoms
2	A	301	CYC	C1B-CHB-C4A-C3A
2	B	301	CYC	C1B-CHB-C4A-C3A
2	A	301	CYC	C1B-CHB-C4A-NA
2	B	301	CYC	C1B-CHB-C4A-NA

There are no ring outliers.

2 monomers are involved in 15 short contacts:

Mol	Chain	Res	Type	Clashes	Symm-Clashes
2	A	301	CYC	5	0
2	B	301	CYC	10	0

5.7 Other polymers [i](#)

There are no such residues in this entry.

5.8 Polymer linkage issues [i](#)

There are no chain breaks in this entry.

6 Fit of model and data [i](#)

6.1 Protein, DNA and RNA chains [i](#)

In the following table, the column labelled ‘#RSRZ> 2’ contains the number (and percentage) of RSRZ outliers, followed by percent RSRZ outliers for the chain as percentile scores relative to all X-ray entries and entries of similar resolution. The OWAB column contains the minimum, median, 95th percentile and maximum values of the occupancy-weighted average B-factor per residue. The column labelled ‘Q< 0.9’ lists the number of (and percentage) of residues with an average occupancy less than 0.9.

Mol	Chain	Analysed	<RSRZ>	#RSRZ>2		OWAB(Å ²)	Q<0.9
1	A	147/157 (93%)	-0.49	0	100 100	13, 26, 49, 64	0
1	B	145/157 (92%)	-0.49	1 (0%)	89 75	17, 26, 51, 70	0
All	All	292/314 (92%)	-0.49	1 (0%)	94 86	13, 26, 51, 70	0

All (1) RSRZ outliers are listed below:

Mol	Chain	Res	Type	RSRZ
1	B	20	LEU	2.2

6.2 Non-standard residues in protein, DNA, RNA chains [i](#)

There are no non-standard protein/DNA/RNA residues in this entry.

6.3 Carbohydrates [i](#)

There are no carbohydrates in this entry.

6.4 Ligands [i](#)

In the following table, the Atoms column lists the number of modelled atoms in the group and the number defined in the chemical component dictionary. LLDF column lists the quality of electron density of the group with respect to its neighbouring residues in protein, DNA or RNA chains. The B-factors column lists the minimum, median, 95th percentile and maximum values of B factors of atoms in the group. The column labelled ‘Q< 0.9’ lists the number of atoms with occupancy less than 0.9.

Mol	Type	Chain	Res	Atoms	RSCC	RSR	LLDF	B-factors(Å ²)	Q<0.9
2	CYC	B	301	43/43	0.90	0.21	2.09	18,28,43,55	0
2	CYC	A	301	43/43	0.90	0.19	1.37	18,30,47,58	0

6.5 Other polymers [i](#)

There are no such residues in this entry.