



Full wwPDB X-ray Structure Validation Report ⓘ

Feb 1, 2016 – 10:33 PM GMT

PDB ID : 4Y93
Title : Crystal structure of the PH-TH-kinase construct of Bruton's tyrosine kinase (Btk)
Authors : Wang, Q.; Kuriyan, J.
Deposited on : 2015-02-16
Resolution : 1.70 Å(reported)

This is a Full wwPDB X-ray Structure Validation Report for a publicly released PDB entry.
We welcome your comments at validation@mail.wwpdb.org
A user guide is available at
<http://wwpdb.org/validation/2016/XrayValidationReportHelp>
with specific help available everywhere you see the ⓘ symbol.

The following versions of software and data (see [references ⓘ](#)) were used in the production of this report:

MolProbity : 4.02b-467
Mogul : 1.7 (RC4), CSD as536be (2015)
Xtriage (Phenix) : 1.9-1692
EDS : rb-20026688
Percentile statistics : 20151230.v01 (using entries in the PDB archive December 30th 2015)
Refmac : 5.8.0135
CCP4 : 6.5.0
Ideal geometry (proteins) : Engh & Huber (2001)
Ideal geometry (DNA, RNA) : Parkinson et al. (1996)
Validation Pipeline (wwPDB-VP) : trunk26865

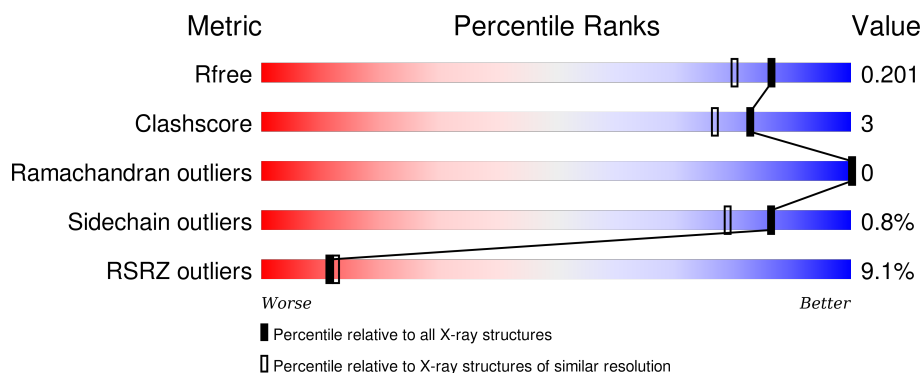
1 Overall quality at a glance

The following experimental techniques were used to determine the structure:

X-RAY DIFFRACTION

The reported resolution of this entry is 1.70 Å.

Percentile scores (ranging between 0-100) for global validation metrics of the entry are shown in the following graphic. The table shows the number of entries on which the scores are based.



Metric	Whole archive (#Entries)	Similar resolution (#Entries, resolution range(Å))
R_{free}	91344	3190 (1.70-1.70)
Clashscore	102246	3585 (1.70-1.70)
Ramachandran outliers	100387	3527 (1.70-1.70)
Sidechain outliers	100360	3527 (1.70-1.70)
RSRZ outliers	91569	3200 (1.70-1.70)

The table below summarises the geometric issues observed across the polymeric chains and their fit to the electron density. The red, orange, yellow and green segments on the lower bar indicate the fraction of residues that contain outliers for ≥ 3 , 2, 1 and 0 types of geometric quality criteria. A grey segment represents the fraction of residues that are not modelled. The numeric value for each fraction is indicated below the corresponding segment, with a dot representing fractions $\leq 5\%$. The upper red bar (where present) indicates the fraction of residues that have poor fit to the electron density. The numeric value is given above the bar.

Mol	Chain	Length	Quality of chain
1	A	446	<div> <div>9%</div> <div>89%</div> <div>7%</div> <div>.</div> </div>

2 Entry composition

There are 5 unique types of molecules in this entry. The entry contains 7489 atoms, of which 3421 are hydrogens and 0 are deuteriums.

In the tables below, the ZeroOcc column contains the number of atoms modelled with zero occupancy, the AltConf column contains the number of residues with at least one atom in alternate conformation and the Trace column contains the number of residues modelled with at most 2 atoms.

- Molecule 1 is a protein called Non-specific protein-tyrosine kinase, Non-specific protein-tyrosine kinase.

Mol	Chain	Residues	Atoms						ZeroOcc	AltConf	Trace
1	A	429	Total	C	H	N	O	S	46	2	0
			6889	2250	3384	583	645	27			

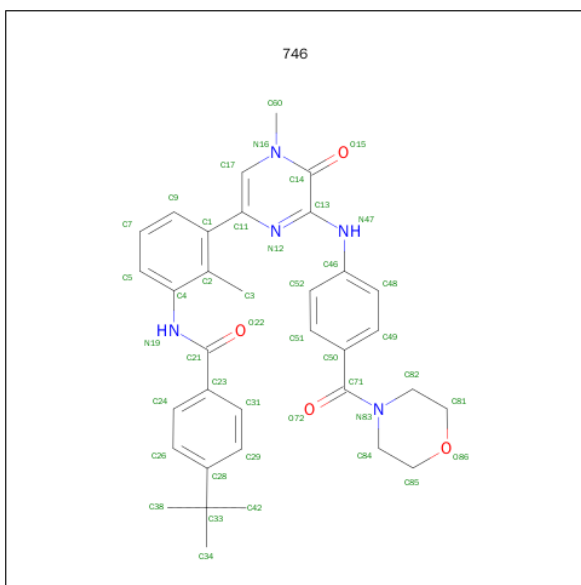
There are 10 discrepancies between the modelled and reference sequences:

Chain	Residue	Modelled	Actual	Comment	Reference
A	0	GLY	-	expression tag	UNP Q3ZC95
A	169	ALA	-	linker	UNP Q3ZC95
A	170	ALA	-	linker	UNP Q3ZC95
A	542	MET	LEU	engineered mutation	UNP Q3ZC95
A	543	THR	SER	engineered mutation	UNP Q3ZC95
A	555	THR	VAL	engineered mutation	UNP Q3ZC95
A	562	LYS	ARG	engineered mutation	UNP Q3ZC95
A	564	ALA	SER	engineered mutation	UNP Q3ZC95
A	565	SER	PRO	engineered mutation	UNP Q3ZC95
A	617	PRO	TYR	engineered mutation	UNP Q3ZC95

- Molecule 2 is ZINC ION (three-letter code: ZN) (formula: Zn).

Mol	Chain	Residues	Atoms		ZeroOcc	AltConf
2	A	1	Total	Zn	0	0
			1	1		

- Molecule 3 is 4-tert-butyl-N-[2-methyl-3-(4-methyl-6-{[4-(morpholin-4-ylcarbonyl)phenyl]amino}-5-oxo-4,5-dihydropyrazin-2-yl)phenyl]benzamide (three-letter code: 746) (formula: C₃₄H₃₇N₅O₄).



Mol	Chain	Residues	Atoms					ZeroOcc	AltConf
3	A	1	Total	C	H	N	O	0	0
			80	34	37	5	4		

- Molecule 4 is CALCIUM ION (three-letter code: CA) (formula: Ca).

Mol	Chain	Residues	Atoms		ZeroOcc	AltConf
4	A	1	Total	Ca	0	0
			1	1		

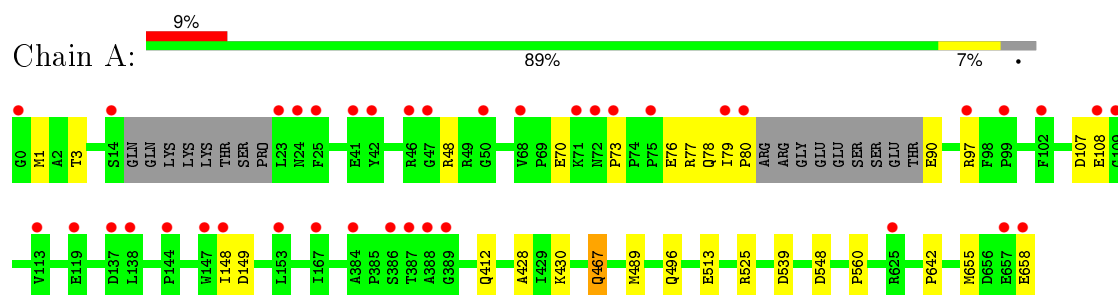
- Molecule 5 is water.

Mol	Chain	Residues	Atoms		ZeroOcc	AltConf
5	A	518	Total	O	0	0
			518	518		

3 Residue-property plots

These plots are drawn for all protein, RNA and DNA chains in the entry. The first graphic for a chain summarises the proportions of errors displayed in the second graphic. The second graphic shows the sequence view annotated by issues in geometry and electron density. Residues are color-coded according to the number of geometric quality criteria for which they contain at least one outlier: green = 0, yellow = 1, orange = 2 and red = 3 or more. A red dot above a residue indicates a poor fit to the electron density ($RSRZ > 2$). Stretches of 2 or more consecutive residues without any outlier are shown as a green connector. Residues present in the sample, but not in the model, are shown in grey.

- Molecule 1: Non-specific protein-tyrosine kinase, Non-specific protein-tyrosine kinase



4 Data and refinement statistics

Property	Value	Source
Space group	P 2 21 21	Depositor
Cell constants a, b, c, α , β , γ	38.33Å 78.65Å 157.57Å 90.00° 90.00° 90.00°	Depositor
Resolution (Å)	43.68 – 1.70 43.68 – 1.69	Depositor EDS
% Data completeness (in resolution range)	98.8 (43.68-1.70) 95.6 (43.68-1.69)	Depositor EDS
R_{merge}	0.12	Depositor
R_{sym}	(Not available)	Depositor
$\langle I/\sigma(I) \rangle$ ¹	3.62 (at 1.70Å)	Xtriage
Refinement program	PHENIX	Depositor
R, R_{free}	0.157 , 0.195 0.171 , 0.201	Depositor DCC
R_{free} test set	2000 reflections (4.03%)	DCC
Wilson B-factor (Å ²)	14.8	Xtriage
Anisotropy	0.476	Xtriage
Bulk solvent k_{sol} (e/Å ³), B_{sol} (Å ²)	0.39 , 48.9	EDS
Estimated twinning fraction	No twinning to report.	Xtriage
L-test for twinning ²	$\langle L \rangle = 0.49$, $\langle L^2 \rangle = 0.32$	Xtriage
Outliers	1 of 53359 reflections (0.002%)	Xtriage
F_o, F_c correlation	0.96	EDS
Total number of atoms	7489	wwPDB-VP
Average B, all atoms (Å ²)	29.0	wwPDB-VP

Xtriage's analysis on translational NCS is as follows: *The largest off-origin peak in the Patterson function is 5.44% of the height of the origin peak. No significant pseudotranslation is detected.*

¹Intensities estimated from amplitudes.

²Theoretical values of $\langle |L| \rangle$, $\langle L^2 \rangle$ for acentric reflections are 0.5, 0.375 respectively for untwinned datasets, and 0.333, 0.2 for perfectly twinned datasets.

5 Model quality [i](#)

5.1 Standard geometry [i](#)

Bond lengths and bond angles in the following residue types are not validated in this section: ZN, CA, 746

The Z score for a bond length (or angle) is the number of standard deviations the observed value is removed from the expected value. A bond length (or angle) with $|Z| > 5$ is considered an outlier worth inspection. RMSZ is the root-mean-square of all Z scores of the bond lengths (or angles).

Mol	Chain	Bond lengths		Bond angles	
		RMSZ	$\# Z > 5$	RMSZ	$\# Z > 5$
1	A	0.52	1/3594 (0.0%)	0.66	1/4849 (0.0%)

All (1) bond length outliers are listed below:

Mol	Chain	Res	Type	Atoms	Z	Observed(Å)	Ideal(Å)
1	A	642	PRO	N-CD	5.09	1.54	1.47

All (1) bond angle outliers are listed below:

Mol	Chain	Res	Type	Atoms	Z	Observed(°)	Ideal(°)
1	A	79	ILE	C-N-CD	5.04	138.99	128.40

There are no chirality outliers.

There are no planarity outliers.

5.2 Too-close contacts [i](#)

In the following table, the Non-H and H(model) columns list the number of non-hydrogen atoms and hydrogen atoms in the chain respectively. The H(added) column lists the number of hydrogen atoms added and optimized by MolProbity. The Clashes column lists the number of clashes within the asymmetric unit, whereas Symm-Clashes lists symmetry related clashes.

Mol	Chain	Non-H	H(model)	H(added)	Clashes	Symm-Clashes
1	A	3505	3384	3466	19	0
2	A	1	0	0	0	0
3	A	43	37	37	4	0
4	A	1	0	0	0	0
5	A	518	0	0	8	2
All	All	4068	3421	3503	22	2

The all-atom clashscore is defined as the number of clashes found per 1000 atoms (including hydrogen atoms). The all-atom clashscore for this structure is 3.

All (22) close contacts within the same asymmetric unit are listed below, sorted by their clash magnitude.

Atom-1	Atom-2	Interatomic distance (Å)	Clash overlap (Å)
1:A:513:GLU:OE1	5:A:1318:HOH:O	1.82	0.96
1:A:70:GLU:CG	1:A:73:PRO:HB3	2.13	0.79
1:A:412:GLN:NE2	5:A:1144:HOH:O	2.17	0.77
1:A:70:GLU:HG3	1:A:73:PRO:HB3	1.67	0.77
1:A:467:GLN:OE1	5:A:801:HOH:O	2.11	0.68
1:A:1:MET:HG3	1:A:3:THR:H	1.63	0.63
1:A:430:LYS:NZ	1:A:539:ASP:OD1	2.25	0.59
3:A:702:746:H17	3:A:702:746:H3A	1.82	0.59
1:A:548:ASP:OD2	5:A:802:HOH:O	2.18	0.54
1:A:496:GLN:HG2	5:A:882:HOH:O	2.05	0.54
1:A:489:MET:HG2	5:A:1316:HOH:O	2.10	0.51
3:A:702:746:H48	3:A:702:746:N12	2.25	0.51
1:A:90:GLU:N	5:A:1260:HOH:O	2.43	0.51
1:A:76:GLU:OE2	1:A:77:ARG:NH1	2.45	0.50
1:A:78:GLN:HB3	1:A:80:PRO:HD2	1.96	0.47
1:A:655:MET:O	1:A:658:GLU:HG3	2.16	0.46
1:A:525:ARG:NH1	1:A:560:PRO:HB3	2.31	0.45
1:A:412:GLN:NE2	5:A:802:HOH:O	2.24	0.45
1:A:107:ASP:OD1	1:A:108:GLU:N	2.50	0.43
1:A:148:ILE:HD12	1:A:149:ASP:H	1.83	0.43
3:A:702:746:C17	3:A:702:746:H3A	2.51	0.41
1:A:428:ALA:CB	3:A:702:746:H60A	2.51	0.41

All (2) symmetry-related close contacts are listed below. The label for Atom-2 includes the symmetry operator and encoded unit-cell translations to be applied.

Atom-1	Atom-2	Interatomic distance (Å)	Clash overlap (Å)
5:A:920:HOH:O	5:A:923:HOH:O[3_749]	1.79	0.41
5:A:949:HOH:O	5:A:950:HOH:O[1_455]	2.19	0.01

5.3 Torsion angles [i](#)

5.3.1 Protein backbone [i](#)

In the following table, the Percentiles column shows the percent Ramachandran outliers of the chain as a percentile score with respect to all X-ray entries followed by that with respect to entries

of similar resolution.

The Analysed column shows the number of residues for which the backbone conformation was analysed, and the total number of residues.

Mol	Chain	Analysed	Favoured	Allowed	Outliers	Percentiles	
1	A	425/446 (95%)	420 (99%)	5 (1%)	0	100	100

There are no Ramachandran outliers to report.

5.3.2 Protein sidechains ⓘ

In the following table, the Percentiles column shows the percent sidechain outliers of the chain as a percentile score with respect to all X-ray entries followed by that with respect to entries of similar resolution.

The Analysed column shows the number of residues for which the sidechain conformation was analysed, and the total number of residues.

Mol	Chain	Analysed	Rotameric	Outliers	Percentiles	
1	A	385/401 (96%)	382 (99%)	3 (1%)	86	79

All (3) residues with a non-rotameric sidechain are listed below:

Mol	Chain	Res	Type
1	A	48	ARG
1	A	97	ARG
1	A	467	GLN

Some sidechains can be flipped to improve hydrogen bonding and reduce clashes. There are no such sidechains identified.

5.3.3 RNA ⓘ

There are no RNA molecules in this entry.

5.4 Non-standard residues in protein, DNA, RNA chains ⓘ

There are no non-standard protein/DNA/RNA residues in this entry.

5.5 Carbohydrates

There are no carbohydrates in this entry.

5.6 Ligand geometry

Of 3 ligands modelled in this entry, 2 are monoatomic - leaving 1 for Mogul analysis.

In the following table, the Counts columns list the number of bonds (or angles) for which Mogul statistics could be retrieved, the number of bonds (or angles) that are observed in the model and the number of bonds (or angles) that are defined in the chemical component dictionary. The Link column lists molecule types, if any, to which the group is linked. The Z score for a bond length (or angle) is the number of standard deviations the observed value is removed from the expected value. A bond length (or angle) with $|Z| > 2$ is considered an outlier worth inspection. RMSZ is the root-mean-square of all Z scores of the bond lengths (or angles).

Mol	Type	Chain	Res	Link	Bond lengths			Bond angles		
					Counts	RMSZ	$\# Z > 2$	Counts	RMSZ	$\# Z > 2$
3	746	A	702	-	45,47,47	1.81	9 (20%)	58,68,68	1.33	8 (13%)

In the following table, the Chirals column lists the number of chiral outliers, the number of chiral centers analysed, the number of these observed in the model and the number defined in the chemical component dictionary. Similar counts are reported in the Torsion and Rings columns. '-' means no outliers of that kind were identified.

Mol	Type	Chain	Res	Link	Chirals	Torsions	Rings
3	746	A	702	-	-	0/30/38/38	0/5/5/5

All (9) bond length outliers are listed below:

Mol	Chain	Res	Type	Atoms	Z	Observed(Å)	Ideal(Å)
3	A	702	746	O15-C14	-2.28	1.19	1.24
3	A	702	746	C50-C71	2.69	1.54	1.50
3	A	702	746	C21-N19	2.72	1.42	1.35
3	A	702	746	C13-N47	3.12	1.42	1.36
3	A	702	746	C14-N16	3.63	1.43	1.38
3	A	702	746	C13-N12	4.29	1.42	1.34
3	A	702	746	C71-N83	4.50	1.45	1.34
3	A	702	746	C17-C11	4.57	1.49	1.39
3	A	702	746	C11-N12	5.09	1.41	1.34

All (8) bond angle outliers are listed below:

Mol	Chain	Res	Type	Atoms	Z	Observed($^{\circ}$)	Ideal($^{\circ}$)
3	A	702	746	C52-C46-N47	-2.97	110.98	120.66
3	A	702	746	C49-C48-C46	-2.20	117.82	120.28
3	A	702	746	C2-C4-N19	-2.07	116.82	119.57
3	A	702	746	N47-C13-N12	2.18	121.94	119.13
3	A	702	746	C52-C46-C48	2.30	122.26	119.06
3	A	702	746	O22-C21-C23	2.32	124.94	120.97
3	A	702	746	C51-C50-C49	2.48	122.28	118.60
3	A	702	746	C85-C84-N83	3.17	116.70	109.90

There are no chirality outliers.

There are no torsion outliers.

There are no ring outliers.

1 monomer is involved in 4 short contacts:

Mol	Chain	Res	Type	Clashes	Symm-Clashes
3	A	702	746	4	0

5.7 Other polymers [i](#)

There are no such residues in this entry.

5.8 Polymer linkage issues [i](#)

There are no chain breaks in this entry.

6 Fit of model and data ⓘ

6.1 Protein, DNA and RNA chains ⓘ

In the following table, the column labelled ‘#RSRZ> 2’ contains the number (and percentage) of RSRZ outliers, followed by percent RSRZ outliers for the chain as percentile scores relative to all X-ray entries and entries of similar resolution. The OWAB column contains the minimum, median, 95th percentile and maximum values of the occupancy-weighted average B-factor per residue. The column labelled ‘Q< 0.9’ lists the number of (and percentage) of residues with an average occupancy less than 0.9.

Mol	Chain	Analysed	<RSRZ>	#RSRZ>2	OWAB(Å ²)	Q<0.9
1	A	429/446 (96%)	0.37	39 (9%) 11 13	8, 23, 53, 77	6 (1%)

All (39) RSRZ outliers are listed below:

Mol	Chain	Res	Type	RSRZ
1	A	80	PRO	12.9
1	A	657	GLU	6.7
1	A	24	ASN	5.5
1	A	23	LEU	5.0
1	A	79	ILE	5.0
1	A	148	ILE	4.8
1	A	0	GLY	4.5
1	A	658	GLU	4.4
1	A	147	TRP	4.2
1	A	72	ASN	4.1
1	A	109	GLY	3.6
1	A	41	GLU	3.5
1	A	73	PRO	3.4
1	A	68	VAL	3.2
1	A	25	PHE	3.1
1	A	384	ALA	2.9
1	A	97	ARG	2.7
1	A	389	GLY	2.6
1	A	167	ILE	2.6
1	A	14	SER	2.5
1	A	46	ARG	2.4
1	A	71	LYS	2.4
1	A	47	GLY	2.4
1	A	137	ASP	2.3
1	A	75	PRO	2.3
1	A	138	LEU	2.3
1	A	102	PHE	2.2

Continued on next page...

Continued from previous page...

Mol	Chain	Res	Type	RSRZ
1	A	153	LEU	2.2
1	A	108	GLU	2.2
1	A	119	GLU	2.2
1	A	50	GLY	2.2
1	A	388	ALA	2.2
1	A	386	SER	2.2
1	A	387	THR	2.1
1	A	144	PRO	2.1
1	A	625	ARG	2.1
1	A	42	TYR	2.1
1	A	113	VAL	2.0
1	A	99	PRO	2.0

6.2 Non-standard residues in protein, DNA, RNA chains [i](#)

There are no non-standard protein/DNA/RNA residues in this entry.

6.3 Carbohydrates [i](#)

There are no carbohydrates in this entry.

6.4 Ligands [i](#)

In the following table, the Atoms column lists the number of modelled atoms in the group and the number defined in the chemical component dictionary. LLDF column lists the quality of electron density of the group with respect to its neighbouring residues in protein, DNA or RNA chains. The B-factors column lists the minimum, median, 95th percentile and maximum values of B factors of atoms in the group. The column labelled 'Q< 0.9' lists the number of atoms with occupancy less than 0.9.

Mol	Type	Chain	Res	Atoms	RSCC	RSR	LLDF	B-factors(Å ²)	Q<0.9
3	746	A	702	43/43	0.97	0.12	1.25	9,14,60,66	0
2	ZN	A	701	1/1	0.98	0.04	-1.86	26,26,26,26	0
4	CA	A	703	1/1	0.99	0.06	-3.87	14,14,14,14	0

6.5 Other polymers [i](#)

There are no such residues in this entry.