



Full wwPDB X-ray Structure Validation Report ⓘ

Feb 1, 2016 – 06:49 AM GMT

PDB ID : 2YHK
Title : D214A mutant of tyrosine phenol-lyase from *Citrobacter freundii*
Authors : Milic, D.; Demidkina, T.V.; Matkovic-Calogovic, D.; Antson, A.A.
Deposited on : 2011-05-03
Resolution : 1.91 Å(reported)

This is a Full wwPDB X-ray Structure Validation Report for a publicly released PDB entry.
We welcome your comments at validation@mail.wwpdb.org
A user guide is available at
<http://wwpdb.org/validation/2016/XrayValidationReportHelp>
with specific help available everywhere you see the ⓘ symbol.

The following versions of software and data (see [references ⓘ](#)) were used in the production of this report:

MolProbity : 4.02b-467
Mogul : 1.7 (RC4), CSD as536be (2015)
Xtriage (Phenix) : 1.9-1692
EDS : rb-20026688
Percentile statistics : 20151230.v01 (using entries in the PDB archive December 30th 2015)
Refmac : 5.8.0135
CCP4 : 6.5.0
Ideal geometry (proteins) : Engh & Huber (2001)
Ideal geometry (DNA, RNA) : Parkinson et al. (1996)
Validation Pipeline (wwPDB-VP) : trunk26865

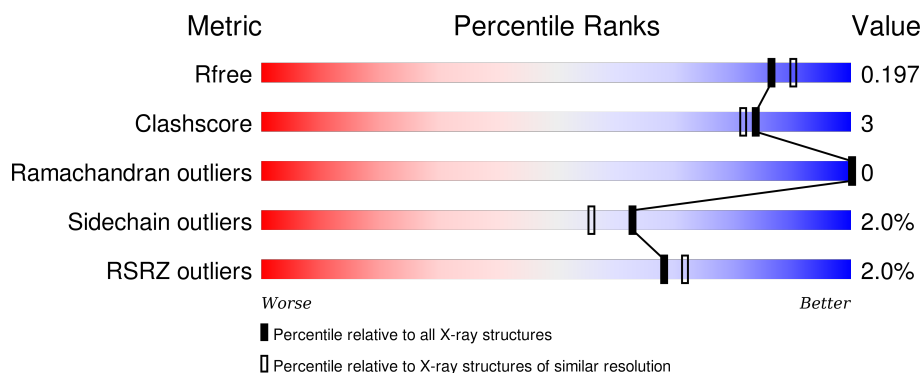
1 Overall quality at a glance

The following experimental techniques were used to determine the structure:

X-RAY DIFFRACTION

The reported resolution of this entry is 1.91 Å.

Percentile scores (ranging between 0-100) for global validation metrics of the entry are shown in the following graphic. The table shows the number of entries on which the scores are based.



Metric	Whole archive (#Entries)	Similar resolution (#Entries, resolution range(Å))
R_{free}	91344	5832 (1.94-1.90)
Clashscore	102246	6540 (1.94-1.90)
Ramachandran outliers	100387	6464 (1.94-1.90)
Sidechain outliers	100360	6465 (1.94-1.90)
RSRZ outliers	91569	5846 (1.94-1.90)

The table below summarises the geometric issues observed across the polymeric chains and their fit to the electron density. The red, orange, yellow and green segments on the lower bar indicate the fraction of residues that contain outliers for ≥ 3 , 2, 1 and 0 types of geometric quality criteria. A grey segment represents the fraction of residues that are not modelled. The numeric value for each fraction is indicated below the corresponding segment, with a dot representing fractions $\leq 5\%$. The upper red bar (where present) indicates the fraction of residues that have poor fit to the electron density. The numeric value is given above the bar.

Mol	Chain	Length	Quality of chain
1	A	456	
1	B	456	

The following table lists non-polymeric compounds, carbohydrate monomers and non-standard residues in protein, DNA, RNA chains that are outliers for geometric or electron-density-fit criteria:

Mol	Type	Chain	Res	Chirality	Geometry	Clashes	Electron density
4	PEG	A	603	-	-	-	X
6	P33	B	600	-	-	-	X

2 Entry composition

There are 7 unique types of molecules in this entry. The entry contains 8157 atoms, of which 0 are hydrogens and 0 are deuteriums.

In the tables below, the ZeroOcc column contains the number of atoms modelled with zero occupancy, the AltConf column contains the number of residues with at least one atom in alternate conformation and the Trace column contains the number of residues modelled with at most 2 atoms.

- Molecule 1 is a protein called TYROSINE PHENOL-LYASE.

Mol	Chain	Residues	Atoms					ZeroOcc	AltConf	Trace
1	A	455	Total	C	N	O	S	0	7	0
			3643	2309	632	676	26			
1	B	455	Total	C	N	O	S	0	10	0
			3657	2322	634	675	26			

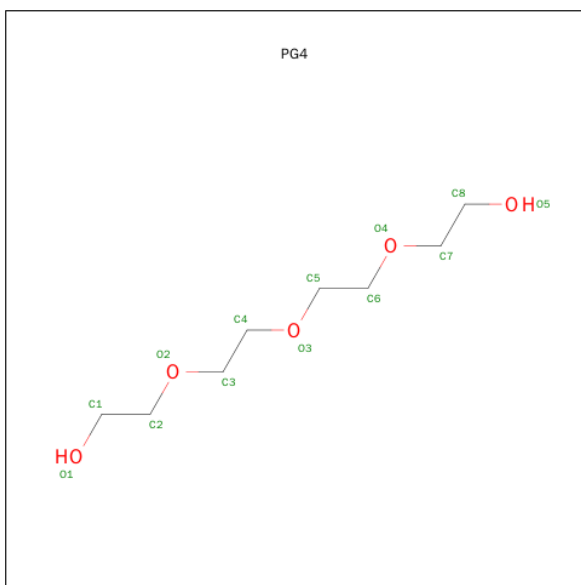
There are 2 discrepancies between the modelled and reference sequences:

Chain	Residue	Modelled	Actual	Comment	Reference
A	214	ALA	ASP	ENGINEERED MUTATION	UNP P31013
B	214	ALA	ASP	ENGINEERED MUTATION	UNP P31013

- Molecule 2 is POTASSIUM ION (three-letter code: K) (formula: K).

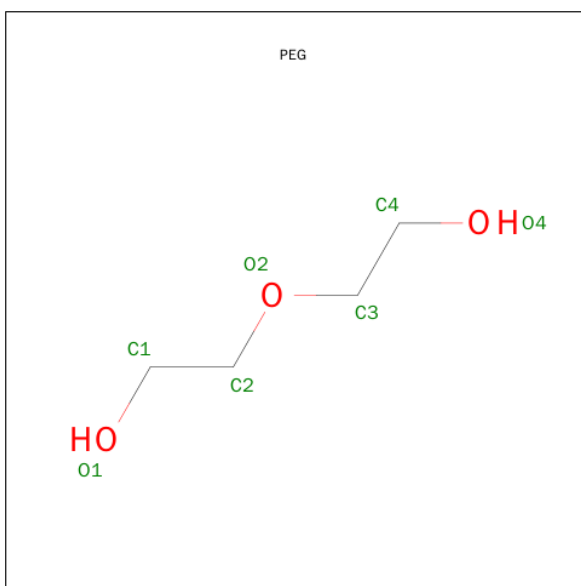
Mol	Chain	Residues	Atoms		ZeroOcc	AltConf
2	B	1	Total	K	0	0
			1	1		
2	A	1	Total	K	0	0
			1	1		

- Molecule 3 is TETRAETHYLENE GLYCOL (three-letter code: PG4) (formula: C₈H₁₈O₅).



Mol	Chain	Residues	Atoms			ZeroOcc	AltConf
3	A	1	Total	C	O	0	0
			13	8	5		

- Molecule 4 is DI(HYDROXYETHYL)ETHER (three-letter code: PEG) (formula: $C_4H_{10}O_3$).



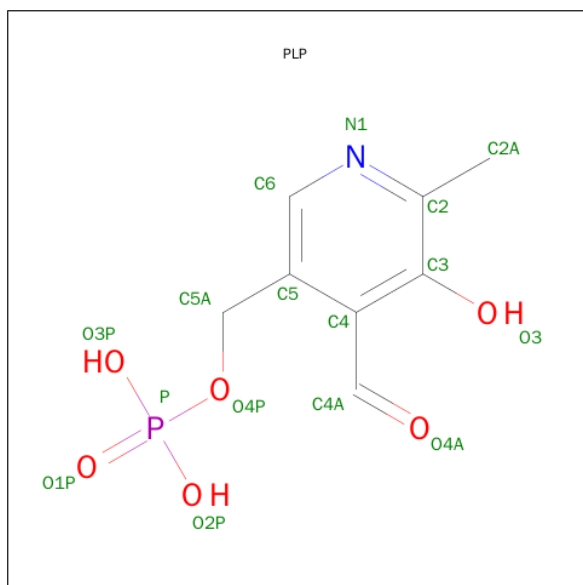
Mol	Chain	Residues	Atoms			ZeroOcc	AltConf
4	A	1	Total	C	O	0	0
			7	4	3		
4	A	1	Total	C	O	0	0
			7	4	3		
4	A	1	Total	C	O	0	0
			7	4	3		

Continued on next page...

Continued from previous page...

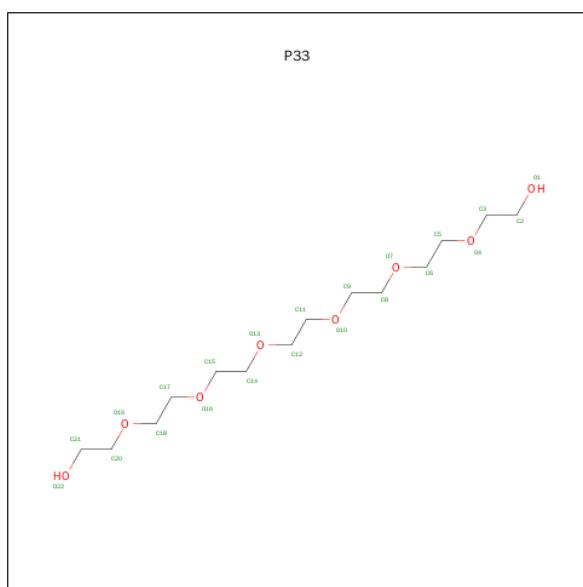
Mol	Chain	Residues	Atoms	ZeroOcc	AltConf
4	A	1	Total C O 7 4 3	0	0
4	B	1	Total C O 7 4 3	0	0
4	B	1	Total C O 7 4 3	0	0

- Molecule 5 is PYRIDOXAL-5'-PHOSPHATE (three-letter code: PLP) (formula: $C_8H_{10}NO_6P$).



Mol	Chain	Residues	Atoms					ZeroOcc	AltConf
5	A	1	Total 15	C 8	N 1	O 5	P 1	0	0
5	B	1	Total 15	C 8	N 1	O 5	P 1	0	0

- Molecule 6 is 3,6,9,12,15,18-HEXAOXAICOSANE-1,20-DIOL (three-letter code: P33) (formula: C₁₄H₃₀O₈).



Mol	Chain	Residues	Atoms			ZeroOcc	AltConf
6	B	1	Total	C	O	0	0
			22	14	8		

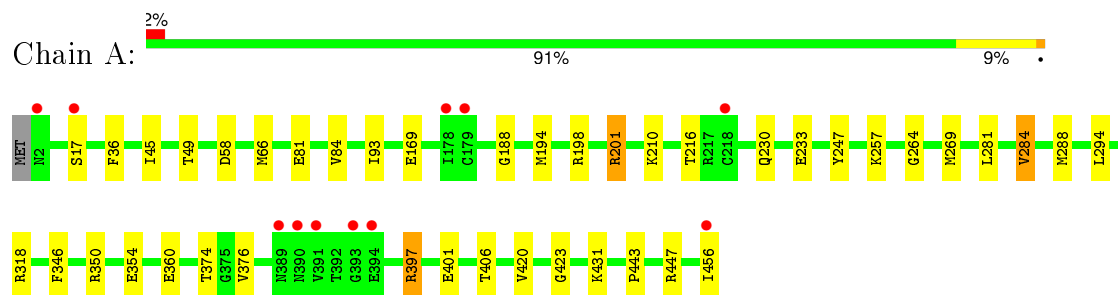
- Molecule 7 is water.

Mol	Chain	Residues	Atoms	ZeroOcc	AltConf
7	A	384	Total O 385 385	0	1
7	B	362	Total O 363 363	0	1

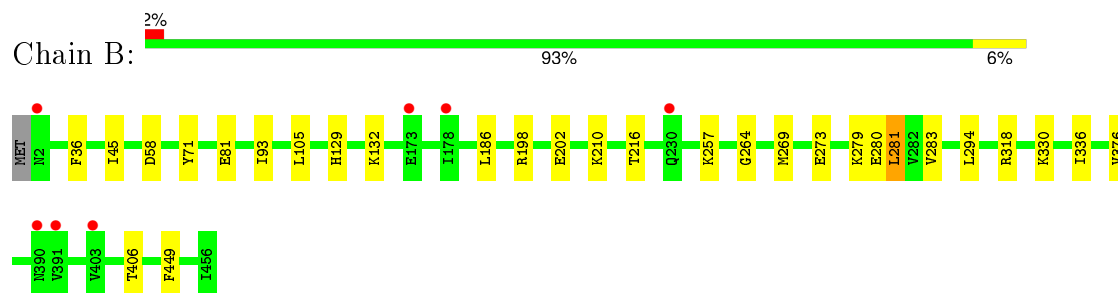
3 Residue-property plots [i](#)

These plots are drawn for all protein, RNA and DNA chains in the entry. The first graphic for a chain summarises the proportions of errors displayed in the second graphic. The second graphic shows the sequence view annotated by issues in geometry and electron density. Residues are color-coded according to the number of geometric quality criteria for which they contain at least one outlier: green = 0, yellow = 1, orange = 2 and red = 3 or more. A red dot above a residue indicates a poor fit to the electron density ($RSRZ > 2$). Stretches of 2 or more consecutive residues without any outlier are shown as a green connector. Residues present in the sample, but not in the model, are shown in grey.

• Molecule 1: TYROSINE PHENOL-LYASE



• Molecule 1: TYROSINE PHENOL-LYASE



4 Data and refinement statistics

Property	Value	Source
Space group	P 21 21 2	Depositor
Cell constants a, b, c, α , β , γ	132.60 Å 142.71 Å 59.41 Å 90.00° 90.00° 90.00°	Depositor
Resolution (Å)	25.00 – 1.91 24.75 – 1.91	Depositor EDS
% Data completeness (in resolution range)	98.6 (25.00-1.91) 98.6 (24.75-1.91)	Depositor EDS
R_{merge}	0.07	Depositor
R_{sym}	(Not available)	Depositor
$\langle I/\sigma(I) \rangle$ ¹	1.87 (at 1.90 Å)	Xtriage
Refinement program	REFMAC 5.5.0109	Depositor
R, R_{free}	0.156 , 0.177 0.179 , 0.197	Depositor DCC
R_{free} test set	1283 reflections (1.50%)	DCC
Wilson B-factor (Å ²)	27.1	Xtriage
Anisotropy	0.164	Xtriage
Bulk solvent k_{sol} (e/Å ³), B_{sol} (Å ²)	0.35 , 42.1	EDS
Estimated twinning fraction	No twinning to report.	Xtriage
L-test for twinning ²	$\langle L \rangle = 0.49$, $\langle L^2 \rangle = 0.33$	Xtriage
Outliers	0 of 86738 reflections	Xtriage
F_o, F_c correlation	0.97	EDS
Total number of atoms	8157	wwPDB-VP
Average B, all atoms (Å ²)	32.0	wwPDB-VP

Xtriage's analysis on translational NCS is as follows: *The largest off-origin peak in the Patterson function is 4.23% of the height of the origin peak. No significant pseudotranslation is detected.*

¹Intensities estimated from amplitudes.

²Theoretical values of $\langle |L| \rangle$, $\langle L^2 \rangle$ for acentric reflections are 0.5, 0.375 respectively for untwinned datasets, and 0.333, 0.2 for perfectly twinned datasets.

5 Model quality [i](#)

5.1 Standard geometry [i](#)

Bond lengths and bond angles in the following residue types are not validated in this section: P33, K, PEG, PG4, PLP

The Z score for a bond length (or angle) is the number of standard deviations the observed value is removed from the expected value. A bond length (or angle) with $|Z| > 5$ is considered an outlier worth inspection. RMSZ is the root-mean-square of all Z scores of the bond lengths (or angles).

Mol	Chain	Bond lengths		Bond angles	
		RMSZ	$\# Z > 5$	RMSZ	$\# Z > 5$
1	A	0.70	0/3735	0.69	1/5028 (0.0%)
1	B	0.72	0/3759	0.69	1/5059 (0.0%)
All	All	0.71	0/7494	0.69	2/10087 (0.0%)

There are no bond length outliers.

All (2) bond angle outliers are listed below:

Mol	Chain	Res	Type	Atoms	Z	Observed(°)	Ideal(°)
1	B	58	ASP	CB-CG-OD1	5.45	123.21	118.30
1	A	58	ASP	CB-CG-OD1	5.42	123.18	118.30

There are no chirality outliers.

There are no planarity outliers.

5.2 Too-close contacts [i](#)

In the following table, the Non-H and H(model) columns list the number of non-hydrogen atoms and hydrogen atoms in the chain respectively. The H(added) column lists the number of hydrogen atoms added and optimized by MolProbity. The Clashes column lists the number of clashes within the asymmetric unit, whereas Symm-Clashes lists symmetry related clashes.

Mol	Chain	Non-H	H(model)	H(added)	Clashes	Symm-Clashes
1	A	3643	0	3610	27	0
1	B	3657	0	3639	19	0
2	A	1	0	0	0	0
2	B	1	0	0	0	0
3	A	13	0	18	2	0
4	A	28	0	40	1	0
4	B	14	0	20	1	0

Continued on next page...

Continued from previous page...

Mol	Chain	Non-H	H(model)	H(added)	Clashes	Symm-Clashes
5	A	15	0	6	0	0
5	B	15	0	6	1	0
6	B	22	0	30	0	0
7	A	385	0	0	8	0
7	B	363	0	0	3	0
All	All	8157	0	7369	45	0

The all-atom clashscore is defined as the number of clashes found per 1000 atoms (including hydrogen atoms). The all-atom clashscore for this structure is 3.

All (45) close contacts within the same asymmetric unit are listed below, sorted by their clash magnitude.

Atom-1	Atom-2	Interatomic distance (Å)	Clash overlap (Å)
1:B:330[B]:LYS:HE2	7:B:2269:HOH:O	1.72	0.88
3:A:600:PG4:H62	1:B:132:LYS:HE2	1.67	0.77
1:B:280:GLU:O	1:B:283[B]:VAL:HG22	1.93	0.68
1:A:443:PRO:HG2	1:A:447:ARG:HA	1.76	0.67
1:A:350:ARG:HG3	1:A:401:GLU:HB3	1.79	0.64
1:A:93[B]:ILE:HG23	1:A:93[B]:ILE:O	2.02	0.58
1:A:198[A]:ARG:HG2	1:A:247:TYR:CZ	2.40	0.57
1:A:354:GLU:HG3	7:A:2162:HOH:O	2.05	0.55
1:A:45:ILE:HB	1:A:376:VAL:HG22	1.89	0.54
1:B:273:GLU:OE1	1:B:273:GLU:HA	2.08	0.54
1:A:288:MET:CE	1:B:449:PHE:CD1	2.91	0.53
1:B:81:GLU:HA	1:B:93[B]:ILE:HG21	1.89	0.53
1:A:194:MET:O	1:A:198[A]:ARG:HG3	2.08	0.53
1:A:210[A]:LYS:NZ	7:A:2236:HOH:O	2.41	0.53
1:A:66[B]:MET:HE1	7:A:2041:HOH:O	2.11	0.50
1:B:330[B]:LYS:HG3	1:B:336:ILE:HD11	1.95	0.49
1:A:201:ARG:HD3	7:A:2230:HOH:O	2.13	0.48
1:A:264:GLY:HA2	1:A:294:LEU:HD21	1.95	0.48
1:A:397:ARG:HD2	7:A:2345:HOH:O	2.14	0.48
1:B:105:LEU:HD22	1:B:281:LEU:HB3	1.97	0.46
1:B:45:ILE:HB	1:B:376:VAL:HG22	1.98	0.46
1:A:284:VAL:HG13	1:B:129:HIS:CE1	2.50	0.46
3:A:600:PG4:H62	1:B:132:LYS:CE	2.42	0.45
1:B:279:LYS:O	1:B:283[A]:VAL:HG23	2.17	0.45
1:A:360:GLU:HG2	1:A:456:ILE:CD1	2.47	0.44
1:A:188:GLY:HA2	1:A:346:PHE:CE1	2.52	0.44
1:A:216:THR:HB	1:A:257:LYS:HD2	1.99	0.43
1:A:81:GLU:HA	1:A:93[B]:ILE:HG21	2.00	0.43

Continued on next page...

Continued from previous page...

Atom-1	Atom-2	Interatomic distance (Å)	Clash overlap (Å)
1:A:93[B]:ILE:CG2	1:A:93[B]:ILE:O	2.65	0.43
1:B:257:LYS:NZ	5:B:1257:PLP:O3	2.52	0.43
1:B:198:ARG:NH2	7:B:2193:HOH:O	2.51	0.43
1:B:198:ARG:O	1:B:202:GLU:HG3	2.19	0.43
1:B:210[B]:LYS:HE3	7:B:2203:HOH:O	2.19	0.42
1:A:431:LYS:HE2	7:A:2363:HOH:O	2.20	0.42
1:A:376:VAL:HG21	1:A:420:VAL:HG22	2.01	0.42
1:A:374:THR:CG2	1:A:423:GLY:HA3	2.49	0.42
4:A:603:PEG:H21	4:A:603:PEG:H42	1.56	0.42
1:B:216:THR:HB	1:B:257:LYS:HD2	2.01	0.42
1:A:233:GLU:H	1:A:233:GLU:CD	2.23	0.42
1:A:84:VAL:CG1	1:A:93[A]:ILE:HD12	2.51	0.41
1:A:49:THR:HG21	1:B:71:TYR:CD1	2.56	0.41
1:B:264:GLY:HA2	1:B:294:LEU:HD21	2.01	0.41
1:A:230:GLN:HG2	7:A:2247:HOH:O	2.19	0.41
4:B:602:PEG:H31	4:B:602:PEG:H11	1.66	0.40
1:A:17:SER:HA	7:A:2035:HOH:O	2.22	0.40

There are no symmetry-related clashes.

5.3 Torsion angles [i](#)

5.3.1 Protein backbone [i](#)

In the following table, the Percentiles column shows the percent Ramachandran outliers of the chain as a percentile score with respect to all X-ray entries followed by that with respect to entries of similar resolution.

The Analysed column shows the number of residues for which the backbone conformation was analysed, and the total number of residues.

Mol	Chain	Analysed	Favoured	Allowed	Outliers	Percentiles	
1	A	460/456 (101%)	452 (98%)	8 (2%)	0	100	100
1	B	463/456 (102%)	454 (98%)	9 (2%)	0	100	100
All	All	923/912 (101%)	906 (98%)	17 (2%)	0	100	100

There are no Ramachandran outliers to report.

5.3.2 Protein sidechains ⓘ

In the following table, the Percentiles column shows the percent sidechain outliers of the chain as a percentile score with respect to all X-ray entries followed by that with respect to entries of similar resolution.

The Analysed column shows the number of residues for which the sidechain conformation was analysed, and the total number of residues.

Mol	Chain	Analysed	Rotameric	Outliers	Percentiles	
1	A	383/378 (101%)	374 (98%)	9 (2%)	58	50
1	B	386/378 (102%)	380 (98%)	6 (2%)	70	65
All	All	769/756 (102%)	754 (98%)	15 (2%)	63	56

All (15) residues with a non-rotameric sidechain are listed below:

Mol	Chain	Res	Type
1	A	36	PHE
1	A	169	GLU
1	A	201	ARG
1	A	269	MET
1	A	281	LEU
1	A	284	VAL
1	A	318	ARG
1	A	397	ARG
1	A	406	THR
1	B	36	PHE
1	B	186	LEU
1	B	269	MET
1	B	281	LEU
1	B	318	ARG
1	B	406	THR

Some sidechains can be flipped to improve hydrogen bonding and reduce clashes. There are no such sidechains identified.

5.3.3 RNA ⓘ

There are no RNA molecules in this entry.

5.4 Non-standard residues in protein, DNA, RNA chains ⓘ

There are no non-standard protein/DNA/RNA residues in this entry.

5.5 Carbohydrates [i](#)

There are no carbohydrates in this entry.

5.6 Ligand geometry [i](#)

Of 12 ligands modelled in this entry, 2 are monoatomic - leaving 10 for Mogul analysis.

In the following table, the Counts columns list the number of bonds (or angles) for which Mogul statistics could be retrieved, the number of bonds (or angles) that are observed in the model and the number of bonds (or angles) that are defined in the chemical component dictionary. The Link column lists molecule types, if any, to which the group is linked. The Z score for a bond length (or angle) is the number of standard deviations the observed value is removed from the expected value. A bond length (or angle) with $|Z| > 2$ is considered an outlier worth inspection. RMSZ is the root-mean-square of all Z scores of the bond lengths (or angles).

Mol	Type	Chain	Res	Link	Bond lengths			Bond angles		
					Counts	RMSZ	# $ Z > 2$	Counts	RMSZ	# $ Z > 2$
5	PLP	A	1257	1	15,15,16	1.86	3 (20%)	21,22,23	1.37	4 (19%)
3	PG4	A	600	-	12,12,12	0.49	0	11,11,11	0.29	0
4	PEG	A	601	-	6,6,6	0.51	0	5,5,5	0.25	0
4	PEG	A	602	-	6,6,6	0.44	0	5,5,5	0.55	0
4	PEG	A	603	-	6,6,6	0.52	0	5,5,5	0.62	0
4	PEG	A	604	-	6,6,6	0.52	0	5,5,5	0.17	0
5	PLP	B	1257	1	15,15,16	1.91	4 (26%)	21,22,23	1.70	6 (28%)
6	P33	B	600	-	21,21,21	0.55	0	20,20,20	0.33	0
4	PEG	B	601	-	6,6,6	0.52	0	5,5,5	0.37	0
4	PEG	B	602	-	6,6,6	0.58	0	5,5,5	0.30	0

In the following table, the Chirals column lists the number of chiral outliers, the number of chiral centers analysed, the number of these observed in the model and the number defined in the chemical component dictionary. Similar counts are reported in the Torsion and Rings columns. '-' means no outliers of that kind were identified.

Mol	Type	Chain	Res	Link	Chirals	Torsions	Rings
5	PLP	A	1257	1	-	0/6/6/8	0/1/1/1
3	PG4	A	600	-	-	0/10/10/10	0/0/0/0
4	PEG	A	601	-	-	0/4/4/4	0/0/0/0
4	PEG	A	602	-	-	0/4/4/4	0/0/0/0
4	PEG	A	603	-	-	0/4/4/4	0/0/0/0
4	PEG	A	604	-	-	0/4/4/4	0/0/0/0
5	PLP	B	1257	1	-	0/6/6/8	0/1/1/1
6	P33	B	600	-	-	0/19/19/19	0/0/0/0
4	PEG	B	601	-	-	0/4/4/4	0/0/0/0

Continued on next page...

Continued from previous page...

Mol	Type	Chain	Res	Link	Chirals	Torsions	Rings
4	PEG	B	602	-	-	0/4/4/4	0/0/0/0

All (7) bond length outliers are listed below:

Mol	Chain	Res	Type	Atoms	Z	Observed(Å)	Ideal(Å)
5	B	1257	PLP	O3-C3	-5.50	1.24	1.37
5	A	1257	PLP	O3-C3	-5.41	1.24	1.37
5	B	1257	PLP	P-O2P	-2.16	1.46	1.54
5	B	1257	PLP	C6-N1	2.27	1.39	1.34
5	A	1257	PLP	C2-N1	2.32	1.39	1.34
5	A	1257	PLP	C6-N1	2.39	1.39	1.34
5	B	1257	PLP	C2-N1	2.72	1.39	1.34

All (10) bond angle outliers are listed below:

Mol	Chain	Res	Type	Atoms	Z	Observed(°)	Ideal(°)
5	B	1257	PLP	O4P-P-O1P	-2.95	99.63	107.14
5	A	1257	PLP	C4A-C4-C5	-2.57	118.20	120.88
5	B	1257	PLP	C4A-C4-C5	-2.44	118.34	120.88
5	A	1257	PLP	C5-C6-N1	-2.07	120.26	123.86
5	B	1257	PLP	O2P-P-O1P	2.26	117.86	110.58
5	B	1257	PLP	O3P-P-O1P	2.43	118.41	110.58
5	A	1257	PLP	C6-C5-C4	2.49	120.26	118.15
5	B	1257	PLP	C6-C5-C4	2.60	120.36	118.15
5	A	1257	PLP	O4P-C5A-C5	3.00	113.96	108.99
5	B	1257	PLP	O4P-C5A-C5	4.20	115.94	108.99

There are no chirality outliers.

There are no torsion outliers.

There are no ring outliers.

4 monomers are involved in 5 short contacts:

Mol	Chain	Res	Type	Clashes	Symm-Clashes
3	A	600	PG4	2	0
4	A	603	PEG	1	0
5	B	1257	PLP	1	0
4	B	602	PEG	1	0

5.7 Other polymers [i](#)

There are no such residues in this entry.

5.8 Polymer linkage issues [i](#)

There are no chain breaks in this entry.

6 Fit of model and data [i](#)

6.1 Protein, DNA and RNA chains [i](#)

In the following table, the column labelled ‘#RSRZ> 2’ contains the number (and percentage) of RSRZ outliers, followed by percent RSRZ outliers for the chain as percentile scores relative to all X-ray entries and entries of similar resolution. The OWAB column contains the minimum, median, 95th percentile and maximum values of the occupancy-weighted average B-factor per residue. The column labelled ‘Q< 0.9’ lists the number of (and percentage) of residues with an average occupancy less than 0.9.

Mol	Chain	Analysed	<RSRZ>	#RSRZ>2	OWAB(Å ²)	Q<0.9
1	A	455/456 (99%)	0.02	11 (2%) 62 66	18, 30, 51, 84	0
1	B	455/456 (99%)	-0.01	7 (1%) 76 79	18, 30, 50, 72	0
All	All	910/912 (99%)	0.00	18 (1%) 68 72	18, 30, 51, 84	0

All (18) RSRZ outliers are listed below:

Mol	Chain	Res	Type	RSRZ
1	A	390	ASN	8.3
1	B	390	ASN	7.0
1	B	391	VAL	5.7
1	A	391	VAL	5.0
1	A	2	ASN	4.1
1	A	393	GLY	3.6
1	B	173	GLU	3.4
1	B	2	ASN	3.1
1	A	456	ILE	3.1
1	A	394	GLU	3.0
1	B	178	ILE	2.9
1	A	17	SER	2.4
1	A	178	ILE	2.4
1	A	389	ASN	2.4
1	B	403	VAL	2.3
1	B	230	GLN	2.3
1	A	179	CYS	2.2
1	A	218	CYS	2.0

6.2 Non-standard residues in protein, DNA, RNA chains [i](#)

There are no non-standard protein/DNA/RNA residues in this entry.

6.3 Carbohydrates [i](#)

There are no carbohydrates in this entry.

6.4 Ligands [i](#)

In the following table, the Atoms column lists the number of modelled atoms in the group and the number defined in the chemical component dictionary. LLDF column lists the quality of electron density of the group with respect to its neighbouring residues in protein, DNA or RNA chains. The B-factors column lists the minimum, median, 95th percentile and maximum values of B factors of atoms in the group. The column labelled 'Q< 0.9' lists the number of atoms with occupancy less than 0.9.

Mol	Type	Chain	Res	Atoms	RSCC	RSR	LLDF	B-factors(\AA^2)	Q<0.9
4	PEG	A	603	7/7	0.89	0.24	4.83	59,61,64,66	0
6	P33	B	600	22/22	0.86	0.14	3.21	55,59,67,70	0
3	PG4	A	600	13/13	0.88	0.13	1.23	53,57,61,63	0
4	PEG	B	601	7/7	0.79	0.15	0.40	60,62,66,67	0
5	PLP	B	1257	15/16	0.98	0.08	-0.53	24,28,36,39	0
4	PEG	A	601	7/7	0.87	0.11	-0.66	59,62,66,71	0
2	K	A	500	1/1	1.00	0.07	-0.72	23,23,23,23	0
5	PLP	A	1257	15/16	0.98	0.07	-1.48	23,25,30,31	0
2	K	B	500	1/1	1.00	0.04	-1.83	24,24,24,24	0
4	PEG	A	602	7/7	0.69	0.20	-	55,60,66,68	0
4	PEG	A	604	7/7	0.70	0.23	-	67,71,72,73	0
4	PEG	B	602	7/7	0.74	0.22	-	60,62,67,67	0

6.5 Other polymers [i](#)

There are no such residues in this entry.