



Full wwPDB X-ray Structure Validation Report ⓘ

Jan 31, 2016 – 11:52 PM GMT

PDB ID : 1YVZ
Title : Hepatitis C Virus RNA Polymerase Genotype 2a In Complex With Non- Nucleoside Analogue Inhibitor
Authors : Biswal, B.K.; Cherney, M.M.; Wang, M.; Chan, L.; Yannopoulos, C.G.; Bilimoria, D.; Nicolas, O.; Bedard, J.; James, M.N.G.
Deposited on : 2005-02-16
Resolution : 2.20 Å(reported)

This is a Full wwPDB X-ray Structure Validation Report for a publicly released PDB entry.
We welcome your comments at validation@mail.wwpdb.org
A user guide is available at
<http://wwpdb.org/validation/2016/XrayValidationReportHelp>
with specific help available everywhere you see the ⓘ symbol.

The following versions of software and data (see [references ⓘ](#)) were used in the production of this report:

MolProbity : 4.02b-467
Mogul : 1.7 (RC4), CSD as536be (2015)
Xtriage (Phenix) : 1.9-1692
EDS : rb-20026688
Percentile statistics : 20151230.v01 (using entries in the PDB archive December 30th 2015)
Refmac : 5.8.0135
CCP4 : 6.5.0
Ideal geometry (proteins) : Engh & Huber (2001)
Ideal geometry (DNA, RNA) : Parkinson et al. (1996)
Validation Pipeline (wwPDB-VP) : trunk26865

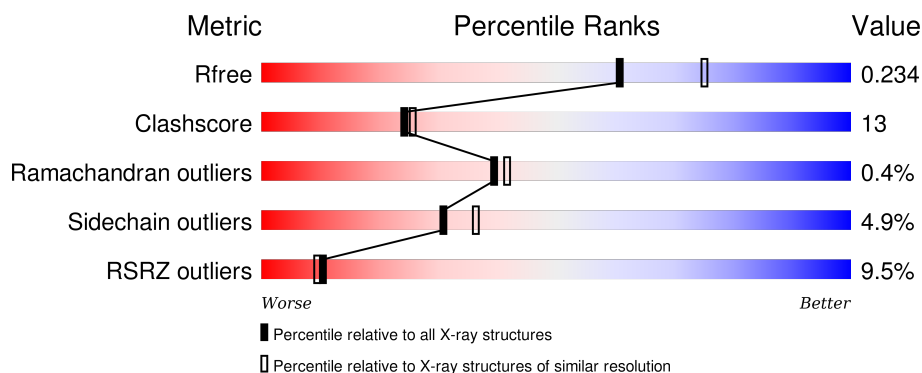
1 Overall quality at a glance

The following experimental techniques were used to determine the structure:

X-RAY DIFFRACTION

The reported resolution of this entry is 2.20 Å.

Percentile scores (ranging between 0-100) for global validation metrics of the entry are shown in the following graphic. The table shows the number of entries on which the scores are based.



Metric	Whole archive (#Entries)	Similar resolution (#Entries, resolution range(Å))
R_{free}	91344	3774 (2.20-2.20)
Clashscore	102246	4477 (2.20-2.20)
Ramachandran outliers	100387	4404 (2.20-2.20)
Sidechain outliers	100360	4405 (2.20-2.20)
RSRZ outliers	91569	3781 (2.20-2.20)

The table below summarises the geometric issues observed across the polymeric chains and their fit to the electron density. The red, orange, yellow and green segments on the lower bar indicate the fraction of residues that contain outliers for ≥ 3 , 2, 1 and 0 types of geometric quality criteria. A grey segment represents the fraction of residues that are not modelled. The numeric value for each fraction is indicated below the corresponding segment, with a dot representing fractions $\leq 5\%$. The upper red bar (where present) indicates the fraction of residues that have poor fit to the electron density. The numeric value is given above the bar.

Mol	Chain	Length	Quality of chain
1	A	570	<div> <div>9%</div> <div>70%</div> <div>24%</div> <div>• •</div> </div>

The following table lists non-polymeric compounds, carbohydrate monomers and non-standard residues in protein, DNA, RNA chains that are outliers for geometric or electron-density-fit criteria:

Mol	Type	Chain	Res	Chirality	Geometry	Clashes	Electron density
2	SO4	A	575	-	-	-	X

2 Entry composition [i](#)

There are 4 unique types of molecules in this entry. The entry contains 4687 atoms, of which 0 are hydrogens and 0 are deuteriums.

In the tables below, the ZeroOcc column contains the number of atoms modelled with zero occupancy, the AltConf column contains the number of residues with at least one atom in alternate conformation and the Trace column contains the number of residues modelled with at most 2 atoms.

- Molecule 1 is a protein called RNA dependent RNA polymerase.

Mol	Chain	Residues	Atoms					ZeroOcc	AltConf	Trace
			Total	C	N	O	S			
1	A	548	4276	2704	751	793	28	0	0	0

There are 6 discrepancies between the modelled and reference sequences:

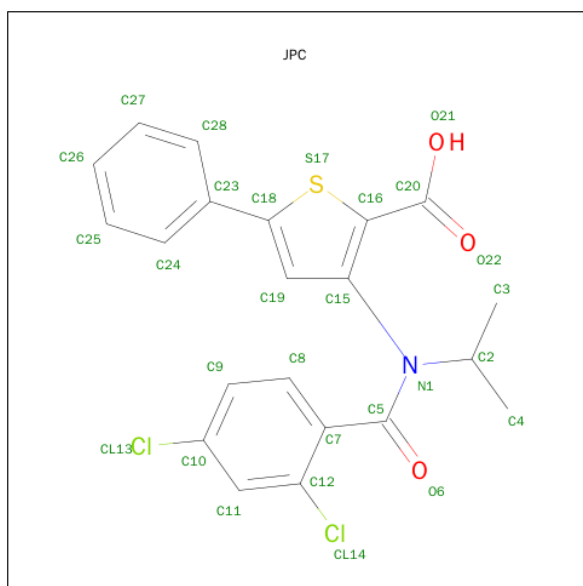
Chain	Residue	Modelled	Actual	Comment	Reference
A	25	PRO	SER	see remark 999	UNP P26660
A	150	THR	ALA	see remark 999	UNP P26660
A	156	ALA	PRO	see remark 999	UNP P26660
A	212	LYS	ARG	see remark 999	UNP P26660
A	309	VAL	ILE	see remark 999	UNP P26660
A	391	PRO	SER	see remark 999	UNP P26660

- Molecule 2 is SULFATE ION (three-letter code: SO4) (formula: O₄S).



Mol	Chain	Residues	Atoms	ZeroOcc	AltConf
2	A	1	Total O S 5 4 1	0	0
2	A	1	Total O S 5 4 1	0	0
2	A	1	Total O S 5 4 1	0	0
2	A	1	Total O S 5 4 1	0	0
2	A	1	Total O S 5 4 1	0	0
2	A	1	Total O S 5 4 1	0	0

- Molecule 3 is 3-[(2,4-DICHLORO BENZOYL)(ISOPROPYL)AMINO]-5-PHENYLTHIOPHENE-2-CARBOXYLIC ACID (three-letter code: JPC) (formula: C₂₁H₁₇Cl₂NO₃S).



Mol	Chain	Residues	Atoms	ZeroOcc	AltConf
3	A	1	Total C Cl N O S 28 21 2 1 3 1	0	0

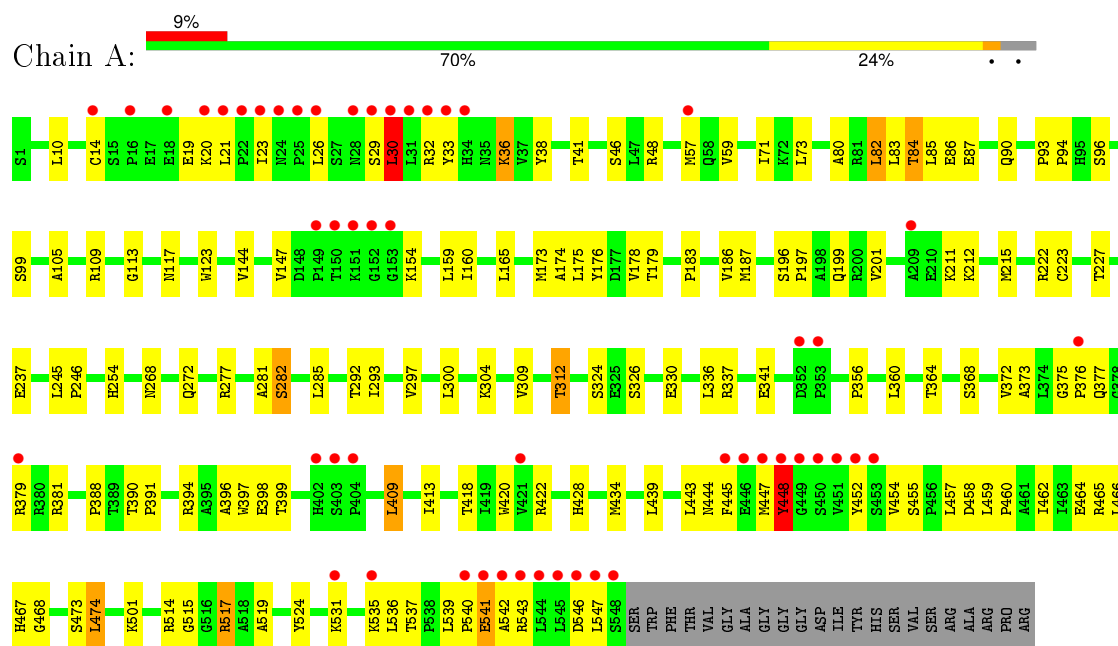
- Molecule 4 is water.

Mol	Chain	Residues	Atoms	ZeroOcc	AltConf
4	A	348	Total O 348 348	0	0

3 Residue-property plots [i](#)

These plots are drawn for all protein, RNA and DNA chains in the entry. The first graphic for a chain summarises the proportions of errors displayed in the second graphic. The second graphic shows the sequence view annotated by issues in geometry and electron density. Residues are color-coded according to the number of geometric quality criteria for which they contain at least one outlier: green = 0, yellow = 1, orange = 2 and red = 3 or more. A red dot above a residue indicates a poor fit to the electron density ($\text{RSRZ} > 2$). Stretches of 2 or more consecutive residues without any outlier are shown as a green connector. Residues present in the sample, but not in the model, are shown in grey.

- Molecule 1: RNA dependent RNA polymerase



4 Data and refinement statistics

Property	Value	Source
Space group	C 2 2 21	Depositor
Cell constants a, b, c, α , β , γ	60.58Å 214.62Å 124.04Å 90.00° 90.00° 90.00°	Depositor
Resolution (Å)	30.29 – 2.20 30.29 – 2.20	Depositor EDS
% Data completeness (in resolution range)	96.3 (30.29-2.20) 96.5 (30.29-2.20)	Depositor EDS
R_{merge}	(Not available)	Depositor
R_{sym}	0.12	Depositor
$\langle I/\sigma(I) \rangle$ ¹	2.00 (at 2.20Å)	Xtriage
Refinement program	CNS 1.1	Depositor
R, R_{free}	0.215 , 0.234 0.216 , 0.234	Depositor DCC
R_{free} test set	2006 reflections (5.01%)	DCC
Wilson B-factor (Å ²)	27.3	Xtriage
Anisotropy	0.430	Xtriage
Bulk solvent k_{sol} (e/Å ³), B_{sol} (Å ²)	0.36 , 65.4	EDS
Estimated twinning fraction	No twinning to report.	Xtriage
L-test for twinning ²	$\langle L \rangle = 0.49$, $\langle L^2 \rangle = 0.32$	Xtriage
Outliers	0 of 40067 reflections	Xtriage
F_o, F_c correlation	0.93	EDS
Total number of atoms	4687	wwPDB-VP
Average B, all atoms (Å ²)	33.0	wwPDB-VP

Xtriage's analysis on translational NCS is as follows: *The largest off-origin peak in the Patterson function is 4.48% of the height of the origin peak. No significant pseudotranslation is detected.*

¹Intensities estimated from amplitudes.

²Theoretical values of $\langle |L| \rangle$, $\langle L^2 \rangle$ for acentric reflections are 0.5, 0.375 respectively for untwinned datasets, and 0.333, 0.2 for perfectly twinned datasets.

5 Model quality [i](#)

5.1 Standard geometry [i](#)

Bond lengths and bond angles in the following residue types are not validated in this section: JPC, SO4

The Z score for a bond length (or angle) is the number of standard deviations the observed value is removed from the expected value. A bond length (or angle) with $|Z| > 5$ is considered an outlier worth inspection. RMSZ is the root-mean-square of all Z scores of the bond lengths (or angles).

Mol	Chain	Bond lengths		Bond angles	
		RMSZ	# $ Z > 5$	RMSZ	# $ Z > 5$
1	A	0.34	0/4371	0.61	0/5934

Chiral center outliers are detected by calculating the chiral volume of a chiral center and verifying if the center is modelled as a planar moiety or with the opposite hand. A planarity outlier is detected by checking planarity of atoms in a peptide group, atoms in a mainchain group or atoms of a sidechain that are expected to be planar.

Mol	Chain	#Chirality outliers	#Planarity outliers
1	A	0	1

There are no bond length outliers.

There are no bond angle outliers.

There are no chirality outliers.

All (1) planarity outliers are listed below:

Mol	Chain	Res	Type	Group
1	A	448	TYR	Sidechain

5.2 Too-close contacts [i](#)

In the following table, the Non-H and H(model) columns list the number of non-hydrogen atoms and hydrogen atoms in the chain respectively. The H(added) column lists the number of hydrogen atoms added and optimized by MolProbity. The Clashes column lists the number of clashes within the asymmetric unit, whereas Symm-Clashes lists symmetry related clashes.

Mol	Chain	Non-H	H(model)	H(added)	Clashes	Symm-Clashes
1	A	4276	0	4317	112	0
2	A	35	0	0	0	0

Continued on next page...

Continued from previous page...

Mol	Chain	Non-H	H(model)	H(added)	Clashes	Symm-Clashes
3	A	28	0	16	1	0
4	A	348	0	0	11	1
All	All	4687	0	4333	113	1

The all-atom clashscore is defined as the number of clashes found per 1000 atoms (including hydrogen atoms). The all-atom clashscore for this structure is 13.

All (113) close contacts within the same asymmetric unit are listed below, sorted by their clash magnitude.

Atom-1	Atom-2	Interatomic distance (Å)	Clash overlap (Å)
1:A:71:ILE:HD12	1:A:297:VAL:HG22	1.43	0.98
1:A:84:THR:HG22	1:A:87:GLU:H	1.31	0.96
1:A:268:ASN:HD21	1:A:272:GLN:HE21	1.18	0.89
1:A:377:GLN:HE21	1:A:379:ARG:H	1.26	0.84
1:A:21:LEU:HD11	1:A:397:TRP:HA	1.63	0.81
1:A:377:GLN:NE2	1:A:379:ARG:HG2	1.96	0.80
1:A:539:LEU:HB3	1:A:540:PRO:HD2	1.64	0.79
1:A:514:ARG:HG3	1:A:514:ARG:HH21	1.47	0.79
1:A:71:ILE:CD1	1:A:297:VAL:HG22	2.15	0.77
1:A:375:GLY:HA3	1:A:377:GLN:HE22	1.52	0.75
1:A:160:ILE:HD12	1:A:282:SER:HB2	1.71	0.73
1:A:268:ASN:HD21	1:A:272:GLN:NE2	1.87	0.70
1:A:517:ARG:HH21	1:A:517:ARG:HG3	1.57	0.68
1:A:454:VAL:HG21	1:A:462:ILE:CD1	2.24	0.67
1:A:196:SER:H	1:A:199:GLN:HE21	1.43	0.66
1:A:460:PRO:HG2	4:A:665:HOH:O	1.96	0.65
1:A:428:HIS:HD2	4:A:770:HOH:O	1.81	0.64
1:A:36:LYS:HB3	1:A:147:VAL:HG22	1.79	0.63
1:A:375:GLY:CA	1:A:377:GLN:HE22	2.11	0.63
1:A:26:LEU:HD23	1:A:26:LEU:O	2.00	0.61
1:A:466:LEU:HD23	1:A:466:LEU:O	2.00	0.61
1:A:268:ASN:ND2	1:A:272:GLN:HE21	1.96	0.61
1:A:394:ARG:O	1:A:398:GLU:HG3	2.02	0.60
1:A:514:ARG:NH2	1:A:514:ARG:HG3	2.15	0.60
1:A:377:GLN:CD	1:A:377:GLN:H	2.05	0.59
1:A:309:VAL:O	1:A:324:SER:HB2	2.03	0.58
1:A:422:ARG:HD2	4:A:586:HOH:O	2.02	0.58
1:A:93:PRO:HG2	1:A:96:SER:HB3	1.86	0.58
1:A:196:SER:H	1:A:199:GLN:NE2	2.01	0.57
1:A:466:LEU:HD22	1:A:467:HIS:CE1	2.40	0.57
1:A:535:LYS:HE2	1:A:537:THR:HG22	1.86	0.57

Continued on next page...

Continued from previous page...

Atom-1	Atom-2	Interatomic distance (Å)	Clash overlap (Å)
1:A:535:LYS:O	1:A:536:LEU:HB2	2.05	0.56
1:A:94:PRO:HD3	1:A:109:ARG:NH2	2.21	0.55
1:A:377:GLN:CD	1:A:379:ARG:HG2	2.26	0.55
1:A:105:ALA:O	1:A:109:ARG:HG3	2.06	0.55
1:A:515:GLY:HA2	1:A:519:ALA:HB2	1.88	0.55
1:A:517:ARG:NH2	1:A:517:ARG:HG3	2.21	0.54
1:A:293:ILE:O	1:A:297:VAL:HG23	2.08	0.54
1:A:336:LEU:HD12	1:A:356:PRO:HD3	1.89	0.54
1:A:422:ARG:NH1	1:A:474:LEU:O	2.42	0.53
1:A:467:HIS:HD2	4:A:771:HOH:O	1.92	0.53
1:A:83:LEU:HD22	1:A:176:TYR:HB3	1.91	0.53
1:A:19:GLU:HG2	1:A:41:THR:HG21	1.89	0.53
1:A:85:LEU:O	1:A:85:LEU:HD23	2.08	0.53
1:A:409:LEU:HD13	1:A:445:PHE:CD2	2.44	0.52
1:A:183:PRO:HG2	4:A:617:HOH:O	2.10	0.51
1:A:539:LEU:C	1:A:541:GLU:H	2.13	0.51
1:A:413:ILE:O	1:A:467:HIS:HE1	1.93	0.51
1:A:381:ARG:HB3	1:A:381:ARG:NH2	2.25	0.51
1:A:454:VAL:HG21	1:A:462:ILE:HD11	1.92	0.51
1:A:444:ASN:HA	1:A:452:TYR:O	2.11	0.51
1:A:84:THR:HG23	1:A:86:GLU:H	1.77	0.50
1:A:377:GLN:HE21	1:A:379:ARG:N	2.02	0.50
1:A:175:LEU:O	1:A:179:THR:HG23	2.12	0.49
1:A:454:VAL:HG22	1:A:455:SER:N	2.26	0.49
1:A:85:LEU:C	1:A:85:LEU:HD23	2.33	0.49
1:A:84:THR:HG22	1:A:87:GLU:N	2.14	0.49
1:A:186:VAL:HG23	1:A:187:MET:HG3	1.95	0.48
1:A:32:ARG:HH11	1:A:32:ARG:HG3	1.78	0.48
1:A:535:LYS:HE2	1:A:537:THR:CG2	2.45	0.47
1:A:21:LEU:HG	1:A:397:TRP:CE3	2.49	0.47
1:A:539:LEU:HB3	1:A:540:PRO:CD	2.41	0.47
1:A:80:ALA:HB3	1:A:245:LEU:CD2	2.45	0.46
1:A:304:LYS:NZ	4:A:713:HOH:O	2.47	0.46
1:A:123:TRP:CH2	1:A:174:ALA:HB2	2.50	0.46
1:A:59:VAL:HG13	1:A:59:VAL:O	2.16	0.46
1:A:23:ILE:HA	1:A:33:TYR:OH	2.16	0.46
1:A:501:LYS:NZ	1:A:531:LYS:NZ	2.64	0.46
1:A:144:VAL:HB	1:A:394:ARG:HG2	1.97	0.45
1:A:211:LYS:NZ	1:A:312:THR:HG22	2.31	0.45
1:A:418:THR:O	1:A:422:ARG:HG3	2.17	0.45
1:A:178:VAL:HG23	4:A:702:HOH:O	2.15	0.45

Continued on next page...

Continued from previous page...

Atom-1	Atom-2	Interatomic distance (Å)	Clash overlap (Å)
1:A:396:ALA:O	1:A:399:THR:HB	2.16	0.45
1:A:20:LYS:HB3	1:A:20:LYS:HE2	1.79	0.45
1:A:501:LYS:HZ3	1:A:531:LYS:HZ1	1.65	0.45
1:A:443:LEU:HD11	4:A:876:HOH:O	2.16	0.45
1:A:187:MET:SD	1:A:292:THR:HG22	2.57	0.45
1:A:29:SER:O	1:A:30:LEU:C	2.55	0.44
1:A:196:SER:HB2	1:A:197:PRO:HD2	1.98	0.44
1:A:459:LEU:N	1:A:460:PRO:HD2	2.32	0.44
1:A:464:GLU:O	1:A:468:GLY:N	2.48	0.44
1:A:454:VAL:HG23	4:A:877:HOH:O	2.18	0.44
1:A:197:PRO:O	1:A:201:VAL:HG23	2.18	0.44
1:A:237:GLU:OE1	1:A:254:HIS:HD2	2.00	0.44
3:A:578:JPC:H26	4:A:583:HOH:O	2.18	0.44
1:A:223:CYS:O	1:A:227:THR:HG23	2.17	0.44
1:A:514:ARG:NH2	1:A:514:ARG:CG	2.81	0.44
1:A:38:TYR:CG	1:A:154:LYS:HD2	2.53	0.44
1:A:82:LEU:HD22	1:A:246:PRO:CG	2.48	0.43
1:A:48:ARG:HG2	1:A:159:LEU:HG	1.98	0.43
1:A:376:PRO:HD3	1:A:473:SER:HB2	1.99	0.43
1:A:524:TYR:CZ	1:A:539:LEU:HD21	2.53	0.43
1:A:32:ARG:HG3	1:A:32:ARG:NH1	2.33	0.43
1:A:390:THR:HB	1:A:391:PRO:HD3	2.01	0.42
1:A:458:ASP:O	1:A:462:ILE:HG13	2.20	0.42
1:A:277:ARG:CZ	1:A:281:ALA:HB2	2.49	0.42
1:A:372:VAL:HG22	1:A:373:ALA:N	2.35	0.42
1:A:337:ARG:O	1:A:341:GLU:HG3	2.19	0.42
1:A:546:ASP:OD1	1:A:547:LEU:N	2.52	0.41
1:A:83:LEU:CB	1:A:173:MET:HA	2.50	0.41
1:A:46:SER:HB2	4:A:808:HOH:O	2.19	0.41
1:A:543:ARG:O	1:A:543:ARG:HG2	2.21	0.41
1:A:434:MET:HG2	1:A:439:LEU:HD11	2.02	0.41
1:A:336:LEU:HA	1:A:336:LEU:HD23	1.77	0.41
1:A:113:GLY:O	1:A:117:ASN:ND2	2.54	0.41
1:A:212:LYS:HD3	1:A:212:LYS:HA	1.77	0.41
1:A:364:THR:HA	1:A:368:SER:O	2.20	0.41
1:A:539:LEU:O	1:A:541:GLU:N	2.49	0.40
1:A:99:SER:HB2	1:A:165:LEU:HB3	2.02	0.40
1:A:123:TRP:HH2	1:A:174:ALA:HB2	1.86	0.40
1:A:215:MET:HB2	1:A:326:SER:HB2	2.03	0.40
1:A:388:PRO:HB3	1:A:420:TRP:CD2	2.56	0.40
1:A:465:ARG:HH11	1:A:542:ALA:HA	1.87	0.40

All (1) symmetry-related close contacts are listed below. The label for Atom-2 includes the symmetry operator and encoded unit-cell translations to be applied.

Atom-1	Atom-2	Interatomic distance (Å)	Clash overlap (Å)
4:A:884:HOH:O	4:A:884:HOH:O[3_655]	1.89	0.31

5.3 Torsion angles [i](#)

5.3.1 Protein backbone [i](#)

In the following table, the Percentiles column shows the percent Ramachandran outliers of the chain as a percentile score with respect to all X-ray entries followed by that with respect to entries of similar resolution.

The Analysed column shows the number of residues for which the backbone conformation was analysed, and the total number of residues.

Mol	Chain	Analysed	Favoured	Allowed	Outliers	Percentiles
1	A	546/570 (96%)	524 (96%)	20 (4%)	2 (0%)	39 42

All (2) Ramachandran outliers are listed below:

Mol	Chain	Res	Type
1	A	30	LEU
1	A	448	TYR

5.3.2 Protein sidechains [i](#)

In the following table, the Percentiles column shows the percent sidechain outliers of the chain as a percentile score with respect to all X-ray entries followed by that with respect to entries of similar resolution.

The Analysed column shows the number of residues for which the sidechain conformation was analysed, and the total number of residues.

Mol	Chain	Analysed	Rotameric	Outliers	Percentiles
1	A	467/483 (97%)	444 (95%)	23 (5%)	31 36

All (23) residues with a non-rotameric sidechain are listed below:

Mol	Chain	Res	Type
1	A	10	LEU

Continued on next page...

Continued from previous page...

Mol	Chain	Res	Type
1	A	14	CYS
1	A	30	LEU
1	A	36	LYS
1	A	57	MET
1	A	73	LEU
1	A	82	LEU
1	A	84	THR
1	A	90	GLN
1	A	222	ARG
1	A	282	SER
1	A	285	LEU
1	A	300	LEU
1	A	312	THR
1	A	330	GLU
1	A	360	LEU
1	A	409	LEU
1	A	447	MET
1	A	448	TYR
1	A	457	LEU
1	A	474	LEU
1	A	517	ARG
1	A	541	GLU

Some sidechains can be flipped to improve hydrogen bonding and reduce clashes. All (15) such sidechains are listed below:

Mol	Chain	Res	Type
1	A	58	GLN
1	A	131	GLN
1	A	142	ASN
1	A	199	GLN
1	A	254	HIS
1	A	272	GLN
1	A	335	ASN
1	A	377	GLN
1	A	402	HIS
1	A	414	GLN
1	A	428	HIS
1	A	436	GLN
1	A	444	ASN
1	A	467	HIS
1	A	475	HIS

5.3.3 RNA ⓘ

There are no RNA molecules in this entry.

5.4 Non-standard residues in protein, DNA, RNA chains ⓘ

There are no non-standard protein/DNA/RNA residues in this entry.

5.5 Carbohydrates ⓘ

There are no carbohydrates in this entry.

5.6 Ligand geometry ⓘ

8 ligands are modelled in this entry.

In the following table, the Counts columns list the number of bonds (or angles) for which Mogul statistics could be retrieved, the number of bonds (or angles) that are observed in the model and the number of bonds (or angles) that are defined in the chemical component dictionary. The Link column lists molecule types, if any, to which the group is linked. The Z score for a bond length (or angle) is the number of standard deviations the observed value is removed from the expected value. A bond length (or angle) with $|Z| > 2$ is considered an outlier worth inspection. RMSZ is the root-mean-square of all Z scores of the bond lengths (or angles).

Mol	Type	Chain	Res	Link	Bond lengths			Bond angles		
					Counts	RMSZ	$\# Z > 2$	Counts	RMSZ	$\# Z > 2$
2	SO4	A	571	-	4,4,4	0.16	0	6,6,6	0.15	0
2	SO4	A	572	-	4,4,4	0.19	0	6,6,6	0.08	0
2	SO4	A	573	-	4,4,4	0.18	0	6,6,6	0.08	0
2	SO4	A	574	-	4,4,4	0.16	0	6,6,6	0.07	0
2	SO4	A	575	-	4,4,4	0.18	0	6,6,6	0.09	0
2	SO4	A	576	-	4,4,4	0.22	0	6,6,6	0.09	0
2	SO4	A	577	-	4,4,4	0.21	0	6,6,6	0.09	0
3	JPC	A	578	-	23,30,30	3.05	17 (73%)	26,43,43	1.45	3 (11%)

In the following table, the Chirals column lists the number of chiral outliers, the number of chiral centers analysed, the number of these observed in the model and the number defined in the chemical component dictionary. Similar counts are reported in the Torsion and Rings columns. '-' means no outliers of that kind were identified.

Mol	Type	Chain	Res	Link	Chirals	Torsions	Rings
2	SO4	A	571	-	-	0/0/0/0	0/0/0/0
2	SO4	A	572	-	-	0/0/0/0	0/0/0/0

Continued on next page...

Continued from previous page...

Mol	Type	Chain	Res	Link	Chirals	Torsions	Rings
2	SO4	A	573	-	-	0/0/0/0	0/0/0/0
2	SO4	A	574	-	-	0/0/0/0	0/0/0/0
2	SO4	A	575	-	-	0/0/0/0	0/0/0/0
2	SO4	A	576	-	-	0/0/0/0	0/0/0/0
2	SO4	A	577	-	-	0/0/0/0	0/0/0/0
3	JPC	A	578	-	-	0/16/24/24	0/3/3/3

All (17) bond length outliers are listed below:

Mol	Chain	Res	Type	Atoms	Z	Observed(Å)	Ideal(Å)
3	A	578	JPC	C4-C2	2.07	1.57	1.52
3	A	578	JPC	C7-C5	2.13	1.54	1.50
3	A	578	JPC	C27-C28	2.40	1.43	1.38
3	A	578	JPC	C27-C26	2.44	1.44	1.38
3	A	578	JPC	C26-C25	2.50	1.44	1.38
3	A	578	JPC	C8-C7	2.61	1.44	1.39
3	A	578	JPC	C25-C24	2.63	1.44	1.38
3	A	578	JPC	C9-C8	2.84	1.43	1.38
3	A	578	JPC	C2-N1	3.06	1.54	1.49
3	A	578	JPC	C9-C10	3.07	1.44	1.38
3	A	578	JPC	C24-C23	3.25	1.46	1.39
3	A	578	JPC	C28-C23	3.49	1.46	1.39
3	A	578	JPC	C11-C12	3.59	1.44	1.38
3	A	578	JPC	C11-C10	3.94	1.45	1.38
3	A	578	JPC	C19-C15	5.17	1.44	1.39
3	A	578	JPC	C5-N1	5.25	1.45	1.37
3	A	578	JPC	C7-C12	5.71	1.48	1.39

All (3) bond angle outliers are listed below:

Mol	Chain	Res	Type	Atoms	Z	Observed(°)	Ideal(°)
3	A	578	JPC	C11-C12-C7	-4.40	118.65	121.59
3	A	578	JPC	O6-C5-C7	-2.66	114.73	120.14
3	A	578	JPC	C19-C18-S17	-2.13	108.47	110.75

There are no chirality outliers.

There are no torsion outliers.

There are no ring outliers.

1 monomer is involved in 1 short contact:

Mol	Chain	Res	Type	Clashes	Symm-Clashes
3	A	578	JPC	1	0

5.7 Other polymers [i](#)

There are no such residues in this entry.

5.8 Polymer linkage issues [i](#)

There are no chain breaks in this entry.

6 Fit of model and data ⓘ

6.1 Protein, DNA and RNA chains ⓘ

In the following table, the column labelled ‘#RSRZ> 2’ contains the number (and percentage) of RSRZ outliers, followed by percent RSRZ outliers for the chain as percentile scores relative to all X-ray entries and entries of similar resolution. The OWAB column contains the minimum, median, 95th percentile and maximum values of the occupancy-weighted average B-factor per residue. The column labelled ‘Q< 0.9’ lists the number of (and percentage) of residues with an average occupancy less than 0.9.

Mol	Chain	Analysed	<RSRZ>	#RSRZ>2	OWAB(Å ²)	Q<0.9
1	A	548/570 (96%)	0.24	52 (9%) 10 9	16, 28, 68, 101	0

All (52) RSRZ outliers are listed below:

Mol	Chain	Res	Type	RSRZ
1	A	448	TYR	13.0
1	A	449	GLY	8.8
1	A	33	TYR	7.9
1	A	30	LEU	7.4
1	A	450	SER	6.9
1	A	547	LEU	6.6
1	A	546	ASP	6.5
1	A	25	PRO	6.5
1	A	545	LEU	6.5
1	A	31	LEU	6.0
1	A	452	TYR	5.8
1	A	542	ALA	5.7
1	A	543	ARG	5.1
1	A	22	PRO	5.1
1	A	151	LYS	4.9
1	A	541	GLU	4.5
1	A	32	ARG	4.5
1	A	21	LEU	4.3
1	A	16	PRO	4.2
1	A	535	LYS	3.9
1	A	451	VAL	3.9
1	A	24	ASN	3.7
1	A	20	LYS	3.6
1	A	548	SER	3.5
1	A	150	THR	3.5
1	A	379	ARG	3.4
1	A	540	PRO	3.4

Continued on next page...

Continued from previous page...

Mol	Chain	Res	Type	RSRZ
1	A	404	PRO	3.2
1	A	447	MET	3.2
1	A	149	PRO	3.2
1	A	14	CYS	3.1
1	A	34	HIS	3.1
1	A	402	HIS	3.1
1	A	18	GLU	2.9
1	A	23	ILE	2.9
1	A	28	ASN	2.9
1	A	453	SER	2.8
1	A	544	LEU	2.8
1	A	531	LYS	2.7
1	A	26	LEU	2.7
1	A	376	PRO	2.7
1	A	403	SER	2.6
1	A	421	VAL	2.5
1	A	446	GLU	2.4
1	A	29	SER	2.4
1	A	352	ASP	2.4
1	A	152	GLY	2.3
1	A	57	MET	2.3
1	A	153	GLY	2.3
1	A	209	ALA	2.2
1	A	353	PRO	2.1
1	A	445	PHE	2.0

6.2 Non-standard residues in protein, DNA, RNA chains [i](#)

There are no non-standard protein/DNA/RNA residues in this entry.

6.3 Carbohydrates [i](#)

There are no carbohydrates in this entry.

6.4 Ligands [i](#)

In the following table, the Atoms column lists the number of modelled atoms in the group and the number defined in the chemical component dictionary. LLDF column lists the quality of electron density of the group with respect to its neighbouring residues in protein, DNA or RNA chains. The B-factors column lists the minimum, median, 95th percentile and maximum values of B factors

of atoms in the group. The column labelled 'Q< 0.9' lists the number of atoms with occupancy less than 0.9.

Mol	Type	Chain	Res	Atoms	RSCC	RSR	LLDF	B-factors(\AA^2)	Q<0.9
2	SO4	A	575	5/5	0.95	0.22	12.78	88,89,89,90	0
2	SO4	A	571	5/5	0.95	0.16	1.62	69,71,71,71	0
2	SO4	A	572	5/5	0.93	0.19	0.99	81,81,82,82	0
3	JPC	A	578	28/28	0.88	0.16	0.03	1,32,35,35	0
2	SO4	A	577	5/5	0.84	0.32	-	110,110,110,110	0
2	SO4	A	574	5/5	0.91	0.13	-	77,77,79,79	0
2	SO4	A	573	5/5	0.86	0.27	-	112,112,112,112	0
2	SO4	A	576	5/5	0.76	0.27	-	112,112,112,112	0

6.5 Other polymers [i](#)

There are no such residues in this entry.