



wwPDB X-ray Structure Validation Summary Report ⓘ

Feb 1, 2016 – 06:58 AM GMT

PDB ID : 2YY5
Title : Crystal Structure of tryptophanyl-tRNA synthetase from *Mycoplasma pneumoniae*
Authors : Ishii, T.; Bessho, Y.; Yokoyama, S.; RIKEN Structural Genomics/Proteomics Initiative (RSGI)
Deposited on : 2007-04-27
Resolution : 2.55 Å(reported)

This is a wwPDB X-ray Structure Validation Summary Report for a publicly released PDB entry.
We welcome your comments at validation@mail.wwpdb.org
A user guide is available at
<http://wwpdb.org/validation/2016/XrayValidationReportHelp>
with specific help available everywhere you see the ⓘ symbol.

The following versions of software and data (see [references ⓘ](#)) were used in the production of this report:

MolProbity : 4.02b-467
Mogul : 1.7 (RC4), CSD as536be (2015)
Xtriage (Phenix) : 1.9-1692
EDS : rb-20026688
Percentile statistics : 20151230.v01 (using entries in the PDB archive December 30th 2015)
Refmac : 5.8.0135
CCP4 : 6.5.0
Ideal geometry (proteins) : Engh & Huber (2001)
Ideal geometry (DNA, RNA) : Parkinson et al. (1996)
Validation Pipeline (wwPDB-VP) : trunk26865

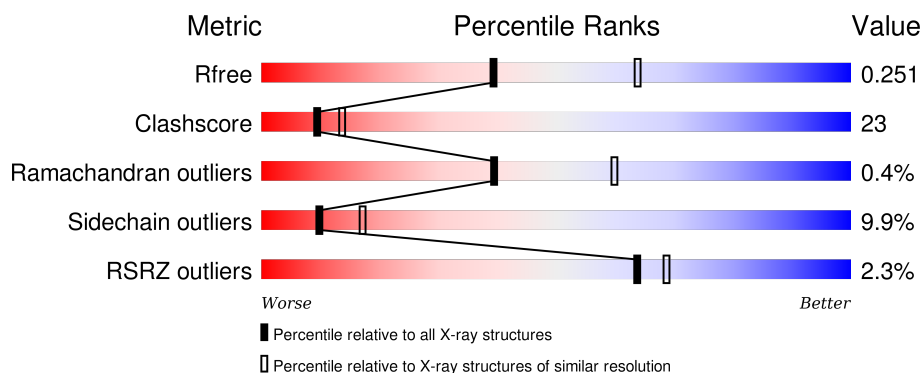
1 Overall quality at a glance

The following experimental techniques were used to determine the structure:

X-RAY DIFFRACTION

The reported resolution of this entry is 2.55 Å.

Percentile scores (ranging between 0-100) for global validation metrics of the entry are shown in the following graphic. The table shows the number of entries on which the scores are based.



Metric	Whole archive (#Entries)	Similar resolution (#Entries, resolution range(Å))
R_{free}	91344	4549 (2.58-2.50)
Clashscore	102246	5292 (2.58-2.50)
Ramachandran outliers	100387	5194 (2.58-2.50)
Sidechain outliers	100360	5196 (2.58-2.50)
RSRZ outliers	91569	4561 (2.58-2.50)

The table below summarises the geometric issues observed across the polymeric chains and their fit to the electron density. The red, orange, yellow and green segments on the lower bar indicate the fraction of residues that contain outliers for ≥ 3 , 2, 1 and 0 types of geometric quality criteria. A grey segment represents the fraction of residues that are not modelled. The numeric value for each fraction is indicated below the corresponding segment, with a dot representing fractions $\leq 5\%$. The upper red bar (where present) indicates the fraction of residues that have poor fit to the electron density. The numeric value is given above the bar.

Mol	Chain	Length	Quality of chain
1	A	348	
1	B	348	
1	C	348	
1	D	348	

The following table lists non-polymeric compounds, carbohydrate monomers and non-standard

residues in protein, DNA, RNA chains that are outliers for geometric or electron-density-fit criteria:

Mol	Type	Chain	Res	Chirality	Geometry	Clashes	Electron density
2	SO4	B	1361	-	-	X	-

2 Entry composition

There are 4 unique types of molecules in this entry. The entry contains 11474 atoms, of which 0 are hydrogens and 0 are deuteriums.

In the tables below, the ZeroOcc column contains the number of atoms modelled with zero occupancy, the AltConf column contains the number of residues with at least one atom in alternate conformation and the Trace column contains the number of residues modelled with at most 2 atoms.

- Molecule 1 is a protein called Tryptophanyl-tRNA synthetase.

Mol	Chain	Residues	Atoms					ZeroOcc	AltConf	Trace
1	A	334	Total	C	N	O	S	0	0	0
			2650	1680	464	492	14			
1	B	346	Total	C	N	O	S	0	0	0
			2741	1733	482	511	15			
1	C	336	Total	C	N	O	S	0	0	0
			2663	1689	466	494	14			
1	D	346	Total	C	N	O	S	0	0	0
			2741	1733	482	511	15			

There are 12 discrepancies between the modelled and reference sequences:

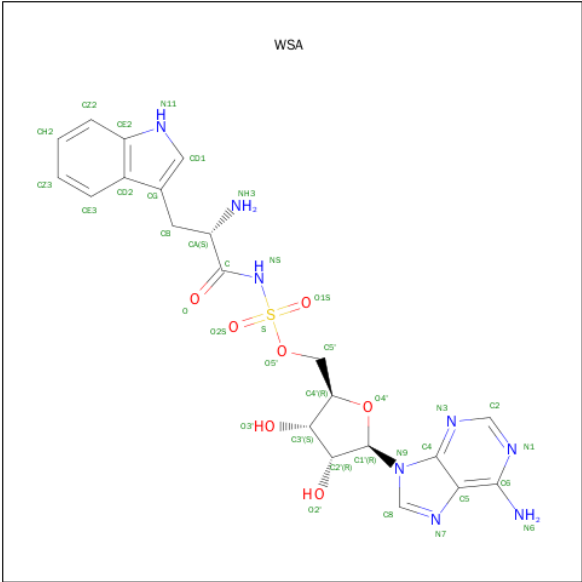
Chain	Residue	Modelled	Actual	Comment	Reference
A	-1	GLY	-	EXPRESSION TAG	UNP P75510
A	0	HIS	-	EXPRESSION TAG	UNP P75510
A	240	SER	PRO	ENGINEERED	UNP P75510
B	-1	GLY	-	EXPRESSION TAG	UNP P75510
B	0	HIS	-	EXPRESSION TAG	UNP P75510
B	240	SER	PRO	ENGINEERED	UNP P75510
C	-1	GLY	-	EXPRESSION TAG	UNP P75510
C	0	HIS	-	EXPRESSION TAG	UNP P75510
C	240	SER	PRO	ENGINEERED	UNP P75510
D	-1	GLY	-	EXPRESSION TAG	UNP P75510
D	0	HIS	-	EXPRESSION TAG	UNP P75510
D	240	SER	PRO	ENGINEERED	UNP P75510

- Molecule 2 is SULFATE ION (three-letter code: SO4) (formula: O₄S).



Mol	Chain	Residues	Atoms			ZeroOcc	AltConf
2	A	1	Total	O	S	0	0
			5	4	1		
2	A	1	Total	O	S	0	0
			5	4	1		
2	B	1	Total	O	S	0	0
			5	4	1		
2	B	1	Total	O	S	0	0
			5	4	1		
2	C	1	Total	O	S	0	0
			5	4	1		
2	C	1	Total	O	S	0	0
			5	4	1		
2	D	1	Total	O	S	0	0
			5	4	1		
2	D	1	Total	O	S	0	0
			5	4	1		

- Molecule 3 is 5'-O-[(L-TRYPTOPHYLAMINO)SULFONYL]ADENOSINE (three-letter code: WSA) (formula: C₂₁H₂₄N₈O₇S).



Mol	Chain	Residues	Atoms					ZeroOcc	AltConf
3	A	1	Total	C	N	O	S	0	0
			37	21	8	7	1		
3	B	1	Total	C	N	O	S	0	0
			37	21	8	7	1		
3	C	1	Total	C	N	O	S	0	0
			37	21	8	7	1		
3	D	1	Total	C	N	O	S	0	0
			37	21	8	7	1		

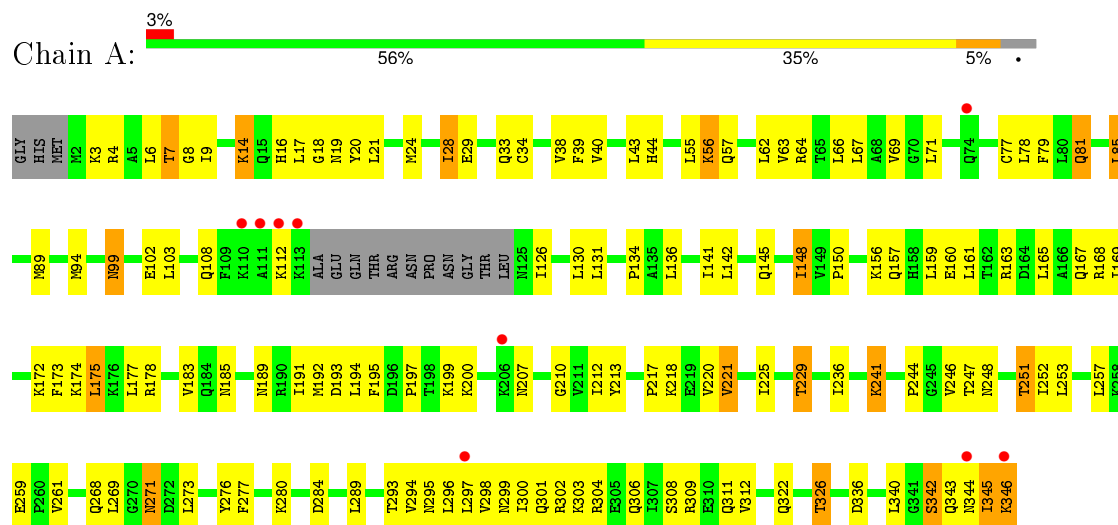
- Molecule 4 is water.

Mol	Chain	Residues	Atoms		ZeroOcc	AltConf
4	A	121	Total	O	0	0
			121	121		
4	B	125	Total	O	0	0
			125	125		
4	C	126	Total	O	0	0
			126	126		
4	D	119	Total	O	0	0
			119	119		

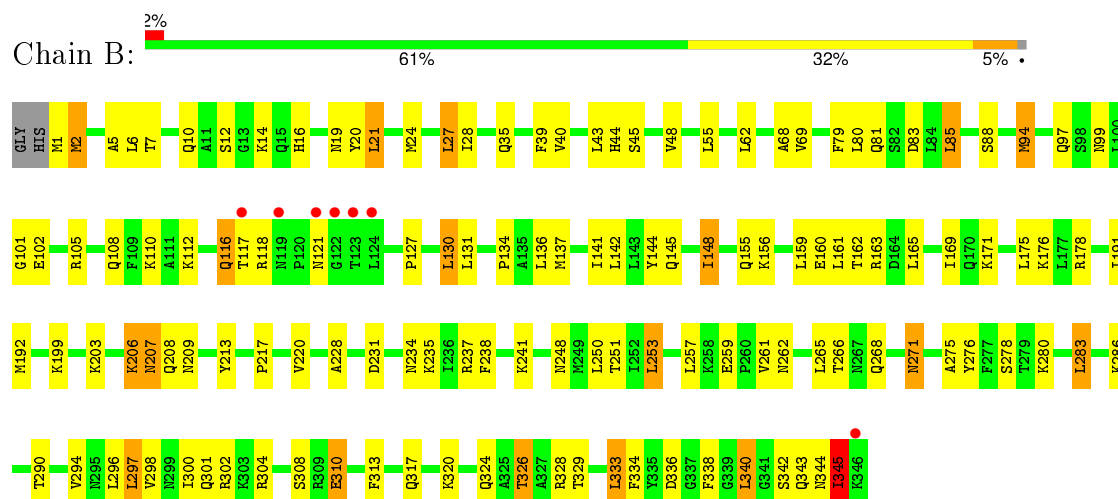
3 Residue-property plots

These plots are drawn for all protein, RNA and DNA chains in the entry. The first graphic for a chain summarises the proportions of errors displayed in the second graphic. The second graphic shows the sequence view annotated by issues in geometry and electron density. Residues are color-coded according to the number of geometric quality criteria for which they contain at least one outlier: green = 0, yellow = 1, orange = 2 and red = 3 or more. A red dot above a residue indicates a poor fit to the electron density ($RSRZ > 2$). Stretches of 2 or more consecutive residues without any outlier are shown as a green connector. Residues present in the sample, but not in the model, are shown in grey.

• Molecule 1: Tryptophanyl-tRNA synthetase

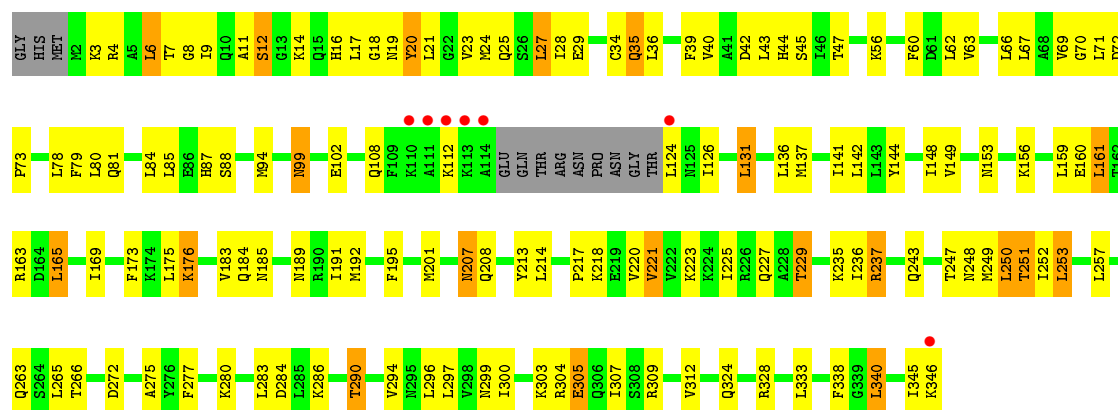


• Molecule 1: Tryptophanyl-tRNA synthetase

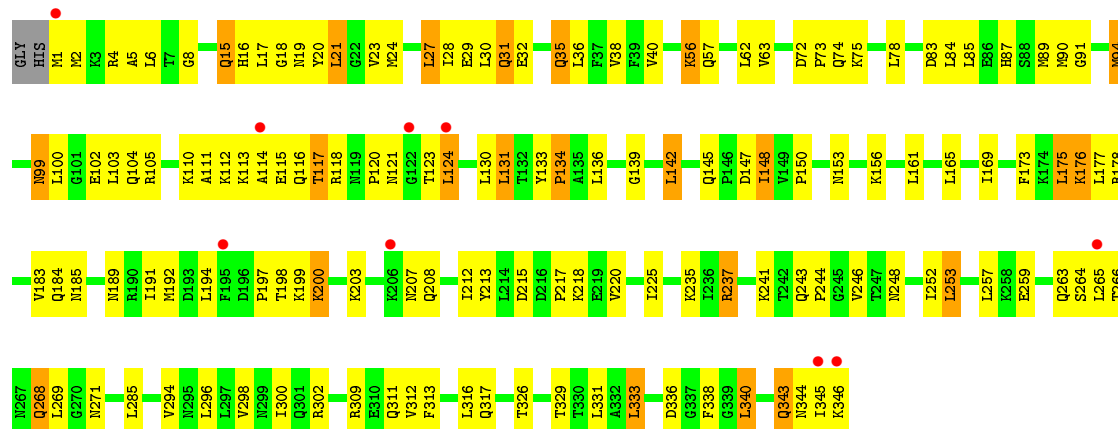


• Molecule 1: Tryptophanyl-tRNA synthetase





• Molecule 1: Tryptophanyl-tRNA synthetase



4 Data and refinement statistics

Property	Value	Source
Space group	P 1 2 1	Depositor
Cell constants a, b, c, α , β , γ	88.16Å 52.11Å 194.09Å 90.00° 96.05° 90.00°	Depositor
Resolution (Å)	34.03 – 2.55 34.03 – 2.54	Depositor EDS
% Data completeness (in resolution range)	95.8 (34.03-2.55) 95.5 (34.03-2.54)	Depositor EDS
R_{merge}	(Not available)	Depositor
R_{sym}	0.10	Depositor
$\langle I/\sigma(I) \rangle$ ¹	4.43 (at 2.54Å)	Xtriage
Refinement program	CNS 1.1	Depositor
R, R_{free}	0.192 , 0.251 0.192 , 0.251	Depositor DCC
R_{free} test set	5664 reflections (10.19%)	DCC
Wilson B-factor (Å ²)	24.1	Xtriage
Anisotropy	0.151	Xtriage
Bulk solvent k_{sol} (e/Å ³), B_{sol} (Å ²)	0.33 , 46.3	EDS
Estimated twinning fraction	No twinning to report.	Xtriage
L-test for twinning ²	$\langle L \rangle = 0.49$, $\langle L^2 \rangle = 0.32$	Xtriage
Outliers	1 of 58085 reflections (0.002%)	Xtriage
F_o, F_c correlation	0.93	EDS
Total number of atoms	11474	wwPDB-VP
Average B, all atoms (Å ²)	28.0	wwPDB-VP

Xtriage's analysis on translational NCS is as follows: *The largest off-origin peak in the Patterson function is 4.59% of the height of the origin peak. No significant pseudotranslation is detected.*

¹Intensities estimated from amplitudes.

²Theoretical values of $\langle |L| \rangle$, $\langle L^2 \rangle$ for acentric reflections are 0.5, 0.375 respectively for untwinned datasets, and 0.333, 0.2 for perfectly twinned datasets.

5 Model quality

5.1 Standard geometry

Bond lengths and bond angles in the following residue types are not validated in this section: WSA, SO4

The Z score for a bond length (or angle) is the number of standard deviations the observed value is removed from the expected value. A bond length (or angle) with $|Z| > 5$ is considered an outlier worth inspection. RMSZ is the root-mean-square of all Z scores of the bond lengths (or angles).

Mol	Chain	Bond lengths		Bond angles	
		RMSZ	# Z >5	RMSZ	# Z >5
1	A	0.39	0/2686	0.64	1/3615 (0.0%)
1	B	0.38	0/2779	0.65	3/3743 (0.1%)
1	C	0.40	0/2699	0.63	1/3633 (0.0%)
1	D	0.38	0/2779	0.67	2/3743 (0.1%)
All	All	0.39	0/10943	0.65	7/14734 (0.0%)

Chiral center outliers are detected by calculating the chiral volume of a chiral center and verifying if the center is modelled as a planar moiety or with the opposite hand. A planarity outlier is detected by checking planarity of atoms in a peptide group, atoms in a mainchain group or atoms of a sidechain that are expected to be planar.

Mol	Chain	#Chirality outliers	#Planarity outliers
1	C	0	1

There are no bond length outliers.

The worst 5 of 7 bond angle outliers are listed below:

Mol	Chain	Res	Type	Atoms	Z	Observed(°)	Ideal(°)
1	D	35	GLN	N-CA-C	-6.99	92.14	111.00
1	B	2	MET	N-CA-C	6.91	129.64	111.00
1	B	345	ILE	CB-CA-C	-6.15	99.30	111.60
1	C	35	GLN	N-CA-C	-5.81	95.32	111.00
1	B	35	GLN	N-CA-C	-5.51	96.13	111.00

There are no chirality outliers.

All (1) planarity outliers are listed below:

Mol	Chain	Res	Type	Group
1	C	20	TYR	Sidechain

5.2 Too-close contacts ⓘ

In the following table, the Non-H and H(model) columns list the number of non-hydrogen atoms and hydrogen atoms in the chain respectively. The H(added) column lists the number of hydrogen atoms added and optimized by MolProbity. The Clashes column lists the number of clashes within the asymmetric unit, whereas Symm-Clashes lists symmetry related clashes.

Mol	Chain	Non-H	H(model)	H(added)	Clashes	Symm-Clashes
1	A	2650	0	2745	132	0
1	B	2741	0	2837	119	0
1	C	2663	0	2761	129	0
1	D	2741	0	2837	138	0
2	A	10	0	0	2	0
2	B	10	0	0	3	0
2	C	10	0	0	0	0
2	D	10	0	0	0	0
3	A	37	0	24	1	0
3	B	37	0	24	5	0
3	C	37	0	24	3	0
3	D	37	0	24	2	0
4	A	121	0	0	7	0
4	B	125	0	0	11	0
4	C	126	0	0	8	0
4	D	119	0	0	17	0
All	All	11474	0	11276	503	0

The all-atom clashscore is defined as the number of clashes found per 1000 atoms (including hydrogen atoms). The all-atom clashscore for this structure is 23.

The worst 5 of 503 close contacts within the same asymmetric unit are listed below, sorted by their clash magnitude.

Atom-1	Atom-2	Interatomic distance (Å)	Clash overlap (Å)
1:C:56:LYS:HD2	1:D:344:ASN:HB3	1.26	1.13
1:A:345:ILE:O	1:A:346:LYS:HB2	1.53	1.05
1:A:241:LYS:HA	1:A:241:LYS:HE2	1.51	0.91
1:D:94:MET:HE3	1:D:169:ILE:HD11	1.53	0.91
1:D:237:ARG:HH11	1:D:243:GLN:NE2	1.70	0.90

There are no symmetry-related clashes.

5.3 Torsion angles ⓘ

5.3.1 Protein backbone ⓘ

In the following table, the Percentiles column shows the percent Ramachandran outliers of the chain as a percentile score with respect to all X-ray entries followed by that with respect to entries of similar resolution.

The Analysed column shows the number of residues for which the backbone conformation was analysed, and the total number of residues.

Mol	Chain	Analysed	Favoured	Allowed	Outliers	Percentiles	
1	A	330/348 (95%)	314 (95%)	16 (5%)	0	100	100
1	B	344/348 (99%)	324 (94%)	19 (6%)	1 (0%)	46	66
1	C	332/348 (95%)	317 (96%)	14 (4%)	1 (0%)	46	66
1	D	344/348 (99%)	322 (94%)	19 (6%)	3 (1%)	21	36
All	All	1350/1392 (97%)	1277 (95%)	68 (5%)	5 (0%)	39	60

All (5) Ramachandran outliers are listed below:

Mol	Chain	Res	Type
1	B	2	MET
1	C	12	SER
1	D	117	THR
1	D	31	GLN
1	D	23	VAL

5.3.2 Protein sidechains ⓘ

In the following table, the Percentiles column shows the percent sidechain outliers of the chain as a percentile score with respect to all X-ray entries followed by that with respect to entries of similar resolution.

The Analysed column shows the number of residues for which the sidechain conformation was analysed, and the total number of residues.

Mol	Chain	Analysed	Rotameric	Outliers	Percentiles	
1	A	296/307 (96%)	268 (90%)	28 (10%)	11	19
1	B	306/307 (100%)	275 (90%)	31 (10%)	9	16
1	C	297/307 (97%)	269 (91%)	28 (9%)	11	19
1	D	306/307 (100%)	274 (90%)	32 (10%)	8	15
All	All	1205/1228 (98%)	1086 (90%)	119 (10%)	10	17

5 of 119 residues with a non-rotameric sidechain are listed below:

Mol	Chain	Res	Type
1	B	317	GLN
1	C	142	LEU
1	D	271	ASN
1	B	333	LEU
1	C	27	LEU

Some sidechains can be flipped to improve hydrogen bonding and reduce clashes. 5 of 80 such sidechains are listed below:

Mol	Chain	Res	Type
1	B	271	ASN
1	C	58	ASN
1	D	263	GLN
1	B	301	GLN
1	B	322	GLN

5.3.3 RNA [i](#)

There are no RNA molecules in this entry.

5.4 Non-standard residues in protein, DNA, RNA chains [i](#)

There are no non-standard protein/DNA/RNA residues in this entry.

5.5 Carbohydrates [i](#)

There are no carbohydrates in this entry.

5.6 Ligand geometry [i](#)

12 ligands are modelled in this entry.

In the following table, the Counts columns list the number of bonds (or angles) for which Mogul statistics could be retrieved, the number of bonds (or angles) that are observed in the model and the number of bonds (or angles) that are defined in the chemical component dictionary. The Link column lists molecule types, if any, to which the group is linked. The Z score for a bond length (or angle) is the number of standard deviations the observed value is removed from the expected value. A bond length (or angle) with $|Z| > 2$ is considered an outlier worth inspection. RMSZ is the root-mean-square of all Z scores of the bond lengths (or angles).

Mol	Type	Chain	Res	Link	Bond lengths			Bond angles		
					Counts	RMSZ	# Z > 2	Counts	RMSZ	# Z > 2
3	WSA	A	1350	-	33,41,41	2.60	5 (15%)	36,61,61	2.93	6 (16%)
2	SO4	A	1362	-	4,4,4	0.17	0	6,6,6	0.14	0
2	SO4	A	1363	-	4,4,4	0.22	0	6,6,6	0.10	0
3	WSA	B	1351	-	33,41,41	2.57	5 (15%)	36,61,61	3.08	7 (19%)
2	SO4	B	1360	-	4,4,4	0.23	0	6,6,6	0.12	0
2	SO4	B	1361	-	4,4,4	0.17	0	6,6,6	0.13	0
3	WSA	C	1352	-	33,41,41	2.54	5 (15%)	36,61,61	2.89	6 (16%)
2	SO4	C	1366	-	4,4,4	0.16	0	6,6,6	0.15	0
2	SO4	C	1367	-	4,4,4	0.22	0	6,6,6	0.18	0
3	WSA	D	1353	-	33,41,41	2.57	5 (15%)	36,61,61	2.86	7 (19%)
2	SO4	D	1364	-	4,4,4	0.22	0	6,6,6	0.13	0
2	SO4	D	1365	-	4,4,4	0.18	0	6,6,6	0.07	0

In the following table, the Chirals column lists the number of chiral outliers, the number of chiral centers analysed, the number of these observed in the model and the number defined in the chemical component dictionary. Similar counts are reported in the Torsion and Rings columns. '-' means no outliers of that kind were identified.

Mol	Type	Chain	Res	Link	Chirals	Torsions	Rings
3	WSA	A	1350	-	-	0/16/39/39	0/5/5/5
2	SO4	A	1362	-	-	0/0/0/0	0/0/0/0
2	SO4	A	1363	-	-	0/0/0/0	0/0/0/0
3	WSA	B	1351	-	-	0/16/39/39	0/5/5/5
2	SO4	B	1360	-	-	0/0/0/0	0/0/0/0
2	SO4	B	1361	-	-	0/0/0/0	0/0/0/0
3	WSA	C	1352	-	-	2/16/39/39	0/5/5/5
2	SO4	C	1366	-	-	0/0/0/0	0/0/0/0
2	SO4	C	1367	-	-	0/0/0/0	0/0/0/0
3	WSA	D	1353	-	-	0/16/39/39	0/5/5/5
2	SO4	D	1364	-	-	0/0/0/0	0/0/0/0
2	SO4	D	1365	-	-	0/0/0/0	0/0/0/0

The worst 5 of 20 bond length outliers are listed below:

Mol	Chain	Res	Type	Atoms	Z	Observed(Å)	Ideal(Å)
3	A	1350	WSA	CD1-CG	-2.84	1.33	1.38
3	B	1351	WSA	C-NS	-2.80	1.33	1.37
3	A	1350	WSA	C-NS	-2.77	1.33	1.37
3	D	1353	WSA	CD1-CG	-2.77	1.33	1.38
3	D	1353	WSA	C-NS	-2.73	1.33	1.37

The worst 5 of 26 bond angle outliers are listed below:

Mol	Chain	Res	Type	Atoms	Z	Observed(°)	Ideal(°)
3	B	1351	WSA	O1S-S-O2S	-10.23	108.51	120.77
3	D	1353	WSA	O1S-S-O2S	-10.01	108.78	120.77
3	B	1351	WSA	C-NS-S	-9.86	110.26	124.05
3	A	1350	WSA	C-NS-S	-9.83	110.29	124.05
3	C	1352	WSA	O1S-S-O2S	-9.68	109.17	120.77

There are no chirality outliers.

All (2) torsion outliers are listed below:

Mol	Chain	Res	Type	Atoms
3	C	1352	WSA	O-C-CA-CB
3	C	1352	WSA	CB-CA-C-NS

There are no ring outliers.

8 monomers are involved in 16 short contacts:

Mol	Chain	Res	Type	Clashes	Symm-Clashes
3	A	1350	WSA	1	0
2	A	1362	SO4	1	0
2	A	1363	SO4	1	0
3	B	1351	WSA	5	0
2	B	1360	SO4	1	0
2	B	1361	SO4	2	0
3	C	1352	WSA	3	0
3	D	1353	WSA	2	0

5.7 Other polymers [i](#)

There are no such residues in this entry.

5.8 Polymer linkage issues [i](#)

There are no chain breaks in this entry.

6 Fit of model and data [i](#)

6.1 Protein, DNA and RNA chains [i](#)

In the following table, the column labelled ‘#RSRZ> 2’ contains the number (and percentage) of RSRZ outliers, followed by percent RSRZ outliers for the chain as percentile scores relative to all X-ray entries and entries of similar resolution. The OWAB column contains the minimum, median, 95th percentile and maximum values of the occupancy-weighted average B-factor per residue. The column labelled ‘Q< 0.9’ lists the number of (and percentage) of residues with an average occupancy less than 0.9.

Mol	Chain	Analysed	<RSRZ>	#RSRZ>2	OWAB(Å ²)	Q<0.9
1	A	334/348 (95%)	-0.28	9 (2%) 58 63	11, 24, 50, 91	0
1	B	346/348 (99%)	-0.28	7 (2%) 68 73	10, 27, 56, 89	0
1	C	336/348 (96%)	-0.34	7 (2%) 67 72	11, 23, 49, 91	0
1	D	346/348 (99%)	-0.17	9 (2%) 59 64	10, 26, 53, 90	0
All	All	1362/1392 (97%)	-0.26	32 (2%) 64 69	10, 25, 53, 91	0

The worst 5 of 32 RSRZ outliers are listed below:

Mol	Chain	Res	Type	RSRZ
1	C	113	LYS	6.0
1	A	111	ALA	5.7
1	D	1	MET	5.2
1	C	124	LEU	5.2
1	C	114	ALA	4.6

6.2 Non-standard residues in protein, DNA, RNA chains [i](#)

There are no non-standard protein/DNA/RNA residues in this entry.

6.3 Carbohydrates [i](#)

There are no carbohydrates in this entry.

6.4 Ligands [i](#)

In the following table, the Atoms column lists the number of modelled atoms in the group and the number defined in the chemical component dictionary. LLDF column lists the quality of electron density of the group with respect to its neighbouring residues in protein, DNA or RNA chains. The B-factors column lists the minimum, median, 95th percentile and maximum values of B factors

of atoms in the group. The column labelled 'Q< 0.9' lists the number of atoms with occupancy less than 0.9.

Mol	Type	Chain	Res	Atoms	RSCC	RSR	LLDF	B-factors(\AA^2)	Q<0.9
3	WSA	D	1353	37/37	0.98	0.15	0.70	4,19,24,33	0
3	WSA	A	1350	37/37	0.96	0.14	0.70	8,19,26,39	0
3	WSA	B	1351	37/37	0.98	0.14	0.69	5,13,26,36	0
3	WSA	C	1352	37/37	0.97	0.13	0.08	13,21,29,30	0
2	SO4	C	1366	5/5	0.98	0.14	-0.09	43,44,51,59	0
2	SO4	B	1361	5/5	0.98	0.13	-0.49	43,46,50,52	0
2	SO4	A	1362	5/5	0.98	0.09	-0.75	18,19,26,29	0
2	SO4	A	1363	5/5	0.99	0.08	-0.79	29,30,34,37	0
2	SO4	D	1365	5/5	0.98	0.12	-1.09	37,42,51,51	0
2	SO4	D	1364	5/5	0.99	0.09	-1.24	11,17,21,22	0
2	SO4	B	1360	5/5	0.99	0.09	-1.40	12,20,23,23	0
2	SO4	C	1367	5/5	0.99	0.09	-1.82	13,20,29,30	0

6.5 Other polymers [i](#)

There are no such residues in this entry.