



Full wwPDB X-ray Structure Validation Report ⓘ

Feb 19, 2016 – 09:35 PM GMT

PDB ID : 4Z0G
Title : Structure of the IMPDH from *Ashbya gossypii* bound to GMP
Authors : Buey, R.M.; de Pereda, J.M.; Revuelta, J.L.
Deposited on : 2015-03-26
Resolution : 1.25 Å(reported)

This is a Full wwPDB X-ray Structure Validation Report for a publicly released PDB entry.
We welcome your comments at validation@mail.wwpdb.org
A user guide is available at
<http://wwpdb.org/validation/2016/XrayValidationReportHelp>
with specific help available everywhere you see the ⓘ symbol.

The following versions of software and data (see [references ⓘ](#)) were used in the production of this report:

MolProbity : 4.02b-467
Mogul : 1.7.1 (RC1), CSD as537be (2016)
Xtriage (Phenix) : 1.9-1692
EDS : rb-20026982
Percentile statistics : 20151230.v01 (using entries in the PDB archive December 30th 2015)
Refmac : 5.8.0135
CCP4 : 6.5.0
Ideal geometry (proteins) : Engh & Huber (2001)
Ideal geometry (DNA, RNA) : Parkinson et al. (1996)
Validation Pipeline (wwPDB-VP) : rb-20026982

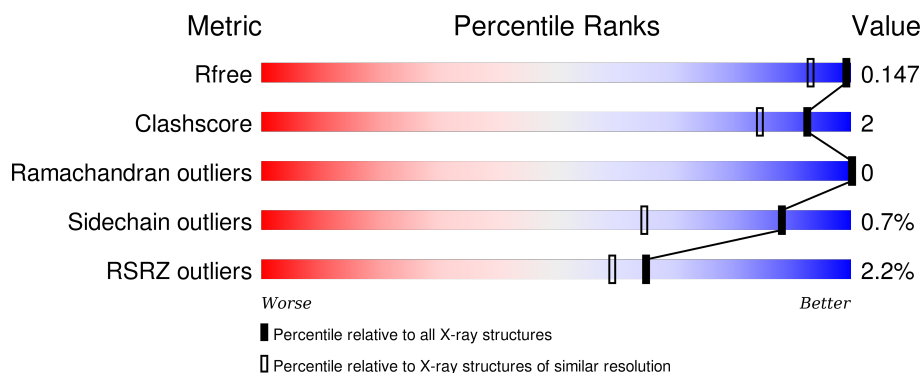
1 Overall quality at a glance ⓘ

The following experimental techniques were used to determine the structure:

X-RAY DIFFRACTION

The reported resolution of this entry is 1.25 Å.

Percentile scores (ranging between 0-100) for global validation metrics of the entry are shown in the following graphic. The table shows the number of entries on which the scores are based.



Metric	Whole archive (#Entries)	Similar resolution (#Entries, resolution range(Å))
R_{free}	91344	1442 (1.30-1.22)
Clashscore	102246	1530 (1.30-1.22)
Ramachandran outliers	100387	1467 (1.30-1.22)
Sidechain outliers	100360	1465 (1.30-1.22)
RSRZ outliers	91569	1442 (1.30-1.22)

The table below summarises the geometric issues observed across the polymeric chains and their fit to the electron density. The red, orange, yellow and green segments on the lower bar indicate the fraction of residues that contain outliers for ≥ 3 , 2, 1 and 0 types of geometric quality criteria. A grey segment represents the fraction of residues that are not modelled. The numeric value for each fraction is indicated below the corresponding segment, with a dot representing fractions $\leq 5\%$. The upper red bar (where present) indicates the fraction of residues that have poor fit to the electron density. The numeric value is given above the bar.

Mol	Chain	Length	Quality of chain
1	A	413	<div> <div></div> <div>89%</div> <div>7%</div> </div>
1	B	413	<div> <div>3%</div> <div>89%</div> <div>5%</div> <div>6%</div> </div>

The following table lists non-polymeric compounds, carbohydrate monomers and non-standard residues in protein, DNA, RNA chains that are outliers for geometric or electron-density-fit criteria:

Mol	Type	Chain	Res	Chirality	Geometry	Clashes	Electron density
2	5GP	A	601	-	-	-	X
2	5GP	B	601	-	-	-	X
3	K	B	602	-	-	-	X
4	GOL	A	603	-	-	-	X
4	GOL	B	603	-	-	-	X

2 Entry composition

There are 5 unique types of molecules in this entry. The entry contains 12376 atoms, of which 5831 are hydrogens and 0 are deuteriums.

In the tables below, the ZeroOcc column contains the number of atoms modelled with zero occupancy, the AltConf column contains the number of residues with at least one atom in alternate conformation and the Trace column contains the number of residues modelled with at most 2 atoms.

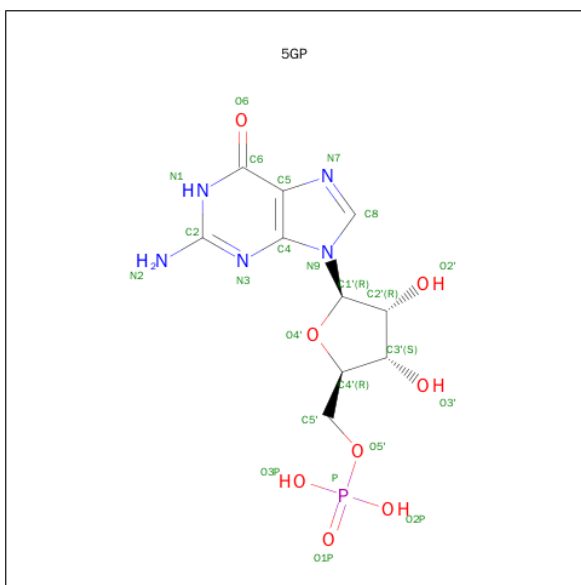
- Molecule 1 is a protein called Inosine-5'-monophosphate dehydrogenase, Inosine-5'-monophosphate dehydrogenase.

Mol	Chain	Residues	Atoms						ZeroOcc	AltConf	Trace
1	A	384	Total	C	H	N	O	S	0	1	0
			5730	1804	2860	498	548	20			
1	B	390	Total	C	H	N	O	S	0	2	0
			5831	1833	2911	506	560	21			

There are 14 discrepancies between the modelled and reference sequences:

Chain	Residue	Modelled	Actual	Comment	Reference
A	-2	GLY	-	expression tag	UNP Q756Z6
A	-1	SER	-	expression tag	UNP Q756Z6
A	0	HIS	-	expression tag	UNP Q756Z6
A	232	SER	-	linker	UNP Q756Z6
A	233	GLN	-	linker	UNP Q756Z6
A	234	ASP	-	linker	UNP Q756Z6
A	235	GLY	-	linker	UNP Q756Z6
B	-2	GLY	-	expression tag	UNP Q756Z6
B	-1	SER	-	expression tag	UNP Q756Z6
B	0	HIS	-	expression tag	UNP Q756Z6
B	232	SER	-	linker	UNP Q756Z6
B	233	GLN	-	linker	UNP Q756Z6
B	234	ASP	-	linker	UNP Q756Z6
B	235	GLY	-	linker	UNP Q756Z6

- Molecule 2 is GUANOSINE-5'-MONOPHOSPHATE (three-letter code: 5GP) (formula: C₁₀H₁₄N₅O₈P).



Mol	Chain	Residues	Atoms					ZeroOcc	AltConf	
2	A	1	Total 35	C 10	H 11	N 5	O 8	P 1	0	0
2	A	1	Total 35	C 10	H 11	N 5	O 8	P 1	0	0
2	B	1	Total 35	C 10	H 11	N 5	O 8	P 1	0	0
2	B	1	Total 35	C 10	H 11	N 5	O 8	P 1	0	0

- Molecule 3 is POTASSIUM ION (three-letter code: K) (formula: K).

Mol	Chain	Residues	Atoms	ZeroOcc	AltConf
3	B	1	Total K 1 1	0	0
3	A	1	Total K 1 1	0	0

- Molecule 4 is GLYCEROL (three-letter code: GOL) (formula: C₃H₈O₃).



Mol	Chain	Residues	Atoms				ZeroOcc	AltConf
4	A	1	Total	C	H	O	0	0
			14	3	8	3		
4	B	1	Total	C	H	O	0	0
			14	3	8	3		

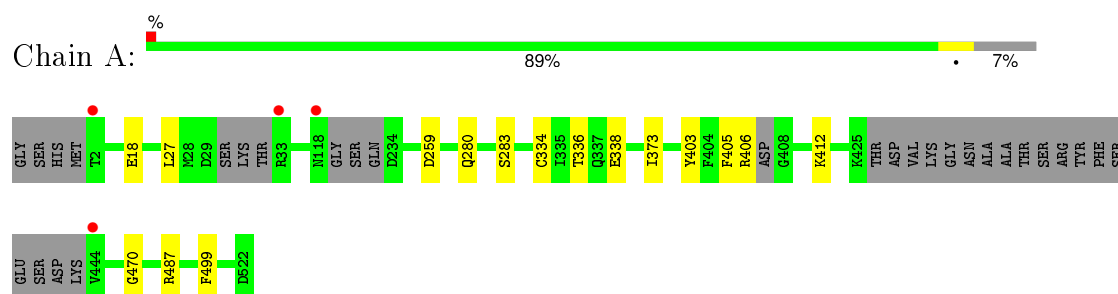
- Molecule 5 is water.

Mol	Chain	Residues	Atoms		ZeroOcc	AltConf
5	A	321	Total	O	0	0
			321	321		
5	B	324	Total	O	0	0
			324	324		

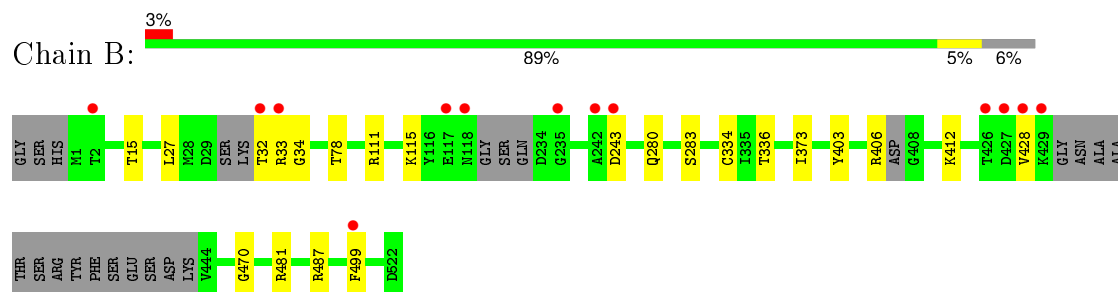
3 Residue-property plots

These plots are drawn for all protein, RNA and DNA chains in the entry. The first graphic for a chain summarises the proportions of errors displayed in the second graphic. The second graphic shows the sequence view annotated by issues in geometry and electron density. Residues are color-coded according to the number of geometric quality criteria for which they contain at least one outlier: green = 0, yellow = 1, orange = 2 and red = 3 or more. A red dot above a residue indicates a poor fit to the electron density (RSRZ > 2). Stretches of 2 or more consecutive residues without any outlier are shown as a green connector. Residues present in the sample, but not in the model, are shown in grey.

- Molecule 1: Inosine-5'-monophosphate dehydrogenase, Inosine-5'-monophosphate dehydrogenase



- Molecule 1: Inosine-5'-monophosphate dehydrogenase, Inosine-5'-monophosphate dehydrogenase



4 Data and refinement statistics

Property	Value	Source
Space group	P 4	Depositor
Cell constants a, b, c, α , β , γ	117.48Å 117.48Å 56.52Å 90.00° 90.00° 90.00°	Depositor
Resolution (Å)	56.52 – 1.25 56.52 – 1.25	Depositor EDS
% Data completeness (in resolution range)	99.9 (56.52-1.25) 99.9 (56.52-1.25)	Depositor EDS
R_{merge}	0.06	Depositor
R_{sym}	(Not available)	Depositor
$\langle I/\sigma(I) \rangle$ ¹	1.58 (at 1.25Å)	Xtriage
Refinement program	PHENIX (phenix.refine: dev_1839)	Depositor
R, R_{free}	0.124 , 0.148 0.125 , 0.147	Depositor DCC
R_{free} test set	10641 reflections (5.01%)	DCC
Wilson B-factor (Å ²)	15.6	Xtriage
Anisotropy	0.352	Xtriage
Bulk solvent k_{sol} (e/Å ³), B_{sol} (Å ²)	0.45 , 50.7	EDS
Estimated twinning fraction	0.026 for h,-k,-l	Xtriage
L-test for twinning ²	$\langle L \rangle = 0.49$, $\langle L^2 \rangle = 0.32$	Xtriage
Outliers	0 of 212419 reflections	Xtriage
F_o, F_c correlation	0.98	EDS
Total number of atoms	12376	wwPDB-VP
Average B, all atoms (Å ²)	22.0	wwPDB-VP

Xtriage's analysis on translational NCS is as follows: *The largest off-origin peak in the Patterson function is 5.45% of the height of the origin peak. No significant pseudotranslation is detected.*

¹Intensities estimated from amplitudes.

²Theoretical values of $\langle |L| \rangle$, $\langle L^2 \rangle$ for acentric reflections are 0.5, 0.375 respectively for untwinned datasets, and 0.333, 0.2 for perfectly twinned datasets.

5 Model quality

5.1 Standard geometry

Bond lengths and bond angles in the following residue types are not validated in this section: GOL, K, 5GP

The Z score for a bond length (or angle) is the number of standard deviations the observed value is removed from the expected value. A bond length (or angle) with $|Z| > 5$ is considered an outlier worth inspection. RMSZ is the root-mean-square of all Z scores of the bond lengths (or angles).

Mol	Chain	Bond lengths		Bond angles	
		RMSZ	$\# Z > 5$	RMSZ	$\# Z > 5$
1	A	0.50	0/2914	0.67	0/3931
1	B	0.50	0/2967	0.67	0/4003
All	All	0.50	0/5881	0.67	0/7934

There are no bond length outliers.

There are no bond angle outliers.

There are no chirality outliers.

There are no planarity outliers.

5.2 Too-close contacts

In the following table, the Non-H and H(model) columns list the number of non-hydrogen atoms and hydrogen atoms in the chain respectively. The H(added) column lists the number of hydrogen atoms added and optimized by MolProbity. The Clashes column lists the number of clashes within the asymmetric unit, whereas Symm-Clashes lists symmetry related clashes.

Mol	Chain	Non-H	H(model)	H(added)	Clashes	Symm-Clashes
1	A	2870	2860	2860	10	0
1	B	2920	2911	2910	13	1
2	A	48	22	24	3	0
2	B	48	22	24	3	0
3	A	1	0	0	0	0
3	B	1	0	0	0	0
4	A	6	8	8	0	0
4	B	6	8	8	0	0
5	A	321	0	0	3	0
5	B	324	0	0	1	0
All	All	6545	5831	5834	23	1

The all-atom clashscore is defined as the number of clashes found per 1000 atoms (including hydrogen atoms). The all-atom clashscore for this structure is 2.

All (23) close contacts within the same asymmetric unit are listed below, sorted by their clash magnitude.

Atom-1	Atom-2	Interatomic distance (Å)	Clash overlap (Å)
1:B:32:THR:HA	1:B:33:ARG:C	2.09	0.71
1:B:373:ILE:HD13	1:B:470:GLY:HA3	1.87	0.56
1:A:283:SER:HB2	2:A:601:5GP:HN22	1.70	0.55
1:A:334:CYS:SG	2:A:600:5GP:N2	2.81	0.53
1:A:373:ILE:HD13	1:A:470:GLY:HA3	1.91	0.52
1:B:32:THR:CB	1:B:33:ARG:HA	2.40	0.52
1:B:111:ARG:HG2	1:B:115:LYS:HE2	1.92	0.50
1:B:283:SER:HB2	2:B:601:5GP:HN22	1.75	0.50
1:B:334:CYS:SG	2:B:600:5GP:N2	2.85	0.49
1:A:338:GLU:OE2	5:A:702:HOH:O	2.20	0.49
1:A:259:ASP:OD1	5:A:701:HOH:O	2.19	0.47
1:B:403:TYR:CZ	1:B:412:LYS:HE3	2.52	0.45
1:B:481:ARG:NH1	5:B:709:HOH:O	2.49	0.45
1:A:403:TYR:CZ	1:A:412:LYS:HE3	2.52	0.45
1:B:27:LEU:HD12	1:B:499:PHE:CE1	2.54	0.43
1:B:32:THR:HA	1:B:34:GLY:N	2.33	0.42
1:A:405:PHE:O	1:A:406:ARG:HG2	2.20	0.42
1:A:336:THR:OG1	2:A:600:5GP:N2	2.49	0.42
1:A:18:GLU:OE2	5:A:703:HOH:O	2.21	0.41
1:B:78:THR:HG22	1:B:428:VAL:HG11	2.01	0.41
1:B:243:ASP:N	1:B:243:ASP:OD1	2.53	0.41
1:A:27:LEU:HD12	1:A:499:PHE:CE1	2.55	0.41
1:B:336:THR:OG1	2:B:600:5GP:N2	2.51	0.41

All (1) symmetry-related close contacts are listed below. The label for Atom-2 includes the symmetry operator and encoded unit-cell translations to be applied.

Atom-1	Atom-2	Interatomic distance (Å)	Clash overlap (Å)
1:B:15:THR:O	1:B:406:ARG:HH22[4_464]	1.56	0.04

5.3 Torsion angles [i](#)

5.3.1 Protein backbone [i](#)

In the following table, the Percentiles column shows the percent Ramachandran outliers of the chain as a percentile score with respect to all X-ray entries followed by that with respect to entries

of similar resolution.

The Analysed column shows the number of residues for which the backbone conformation was analysed, and the total number of residues.

Mol	Chain	Analysed	Favoured	Allowed	Outliers	Percentiles	
1	A	375/413 (91%)	366 (98%)	9 (2%)	0	100	100
1	B	382/413 (92%)	374 (98%)	8 (2%)	0	100	100
All	All	757/826 (92%)	740 (98%)	17 (2%)	0	100	100

There are no Ramachandran outliers to report.

5.3.2 Protein sidechains ⓘ

In the following table, the Percentiles column shows the percent sidechain outliers of the chain as a percentile score with respect to all X-ray entries followed by that with respect to entries of similar resolution.

The Analysed column shows the number of residues for which the sidechain conformation was analysed, and the total number of residues.

Mol	Chain	Analysed	Rotameric	Outliers	Percentiles	
1	A	302/334 (90%)	300 (99%)	2 (1%)	88	65
1	B	309/334 (92%)	307 (99%)	2 (1%)	90	68
All	All	611/668 (92%)	607 (99%)	4 (1%)	88	65

All (4) residues with a non-rotameric sidechain are listed below:

Mol	Chain	Res	Type
1	A	280	GLN
1	A	487	ARG
1	B	280	GLN
1	B	487	ARG

Some sidechains can be flipped to improve hydrogen bonding and reduce clashes. There are no such sidechains identified.

5.3.3 RNA ⓘ

There are no RNA molecules in this entry.

5.4 Non-standard residues in protein, DNA, RNA chains ⓘ

There are no non-standard protein/DNA/RNA residues in this entry.

5.5 Carbohydrates ⓘ

There are no carbohydrates in this entry.

5.6 Ligand geometry ⓘ

Of 8 ligands modelled in this entry, 2 are monoatomic - leaving 6 for Mogul analysis.

In the following table, the Counts columns list the number of bonds (or angles) for which Mogul statistics could be retrieved, the number of bonds (or angles) that are observed in the model and the number of bonds (or angles) that are defined in the chemical component dictionary. The Link column lists molecule types, if any, to which the group is linked. The Z score for a bond length (or angle) is the number of standard deviations the observed value is removed from the expected value. A bond length (or angle) with $|Z| > 2$ is considered an outlier worth inspection. RMSZ is the root-mean-square of all Z scores of the bond lengths (or angles).

Mol	Type	Chain	Res	Link	Bond lengths			Bond angles		
					Counts	RMSZ	# $ Z > 2$	Counts	RMSZ	# $ Z > 2$
2	5GP	A	600	-	22,26,26	1.15	3 (13%)	22,40,40	1.65	5 (22%)
2	5GP	A	601	-	22,26,26	1.27	3 (13%)	22,40,40	1.26	3 (13%)
4	GOL	A	603	-	5,5,5	0.31	0	5,5,5	0.27	0
2	5GP	B	600	-	22,26,26	1.13	2 (9%)	22,40,40	1.60	5 (22%)
2	5GP	B	601	-	22,26,26	1.26	2 (9%)	22,40,40	1.27	3 (13%)
4	GOL	B	603	-	5,5,5	0.34	0	5,5,5	0.24	0

In the following table, the Chirals column lists the number of chiral outliers, the number of chiral centers analysed, the number of these observed in the model and the number defined in the chemical component dictionary. Similar counts are reported in the Torsion and Rings columns. '-' means no outliers of that kind were identified.

Mol	Type	Chain	Res	Link	Chirals	Torsions	Rings
2	5GP	A	600	-	-	0/6/26/26	0/3/3/3
2	5GP	A	601	-	-	0/6/26/26	0/3/3/3
4	GOL	A	603	-	-	0/4/4/4	0/0/0/0
2	5GP	B	600	-	-	0/6/26/26	0/3/3/3
2	5GP	B	601	-	-	0/6/26/26	0/3/3/3
4	GOL	B	603	-	-	0/4/4/4	0/0/0/0

All (10) bond length outliers are listed below:

Mol	Chain	Res	Type	Atoms	Z	Observed(Å)	Ideal(Å)
2	A	601	5GP	C6-N1	-2.53	1.33	1.36
2	A	600	5GP	C2-N1	-2.18	1.33	1.36
2	A	600	5GP	C6-N1	2.12	1.39	1.36
2	B	600	5GP	O4'-C1'	2.26	1.44	1.41
2	B	600	5GP	C2-N2	2.55	1.36	1.32
2	A	600	5GP	O4'-C1'	2.59	1.44	1.41
2	B	601	5GP	C5-C4	2.64	1.46	1.40
2	A	601	5GP	C5-C4	2.73	1.46	1.40
2	A	601	5GP	C6-C5	3.01	1.46	1.40
2	B	601	5GP	C6-C5	3.28	1.47	1.40

All (16) bond angle outliers are listed below:

Mol	Chain	Res	Type	Atoms	Z	Observed(°)	Ideal(°)
2	A	600	5GP	N2-C2-N3	-3.58	115.68	120.29
2	A	600	5GP	C1'-N9-C4	-3.25	123.18	126.81
2	B	601	5GP	C1'-N9-C4	-3.18	123.25	126.81
2	B	600	5GP	C1'-N9-C4	-3.12	123.32	126.81
2	A	601	5GP	C1'-N9-C4	-2.74	123.75	126.81
2	B	600	5GP	N2-C2-N3	-2.69	116.83	120.29
2	B	601	5GP	O5'-P-O1P	-2.48	100.84	107.08
2	B	600	5GP	O2'-C2'-C1'	-2.43	104.00	111.61
2	A	600	5GP	O2'-C2'-C1'	-2.32	104.37	111.61
2	A	601	5GP	O2P-P-O5'	-2.22	100.25	106.72
2	B	600	5GP	O5'-P-O1P	-2.19	101.58	107.08
2	A	600	5GP	O3P-P-O2P	2.10	115.15	107.44
2	B	601	5GP	O2P-P-O1P	2.43	118.54	110.63
2	A	601	5GP	O2P-P-O1P	2.53	118.88	110.63
2	B	600	5GP	N1-C2-N3	3.90	127.09	121.76
2	A	600	5GP	N1-C2-N3	4.05	127.30	121.76

There are no chirality outliers.

There are no torsion outliers.

There are no ring outliers.

4 monomers are involved in 6 short contacts:

Mol	Chain	Res	Type	Clashes	Symm-Clashes
2	A	600	5GP	2	0
2	A	601	5GP	1	0
2	B	600	5GP	2	0
2	B	601	5GP	1	0

5.7 Other polymers

There are no such residues in this entry.

5.8 Polymer linkage issues

There are no chain breaks in this entry.

6 Fit of model and data [i](#)

6.1 Protein, DNA and RNA chains [i](#)

In the following table, the column labelled ‘#RSRZ> 2’ contains the number (and percentage) of RSRZ outliers, followed by percent RSRZ outliers for the chain as percentile scores relative to all X-ray entries and entries of similar resolution. The OWAB column contains the minimum, median, 95th percentile and maximum values of the occupancy-weighted average B-factor per residue. The column labelled ‘Q< 0.9’ lists the number of (and percentage) of residues with an average occupancy less than 0.9.

Mol	Chain	Analysed	<RSRZ>	#RSRZ>2	OWAB(Å ²)	Q<0.9
1	A	384/413 (92%)	-0.49	4 (1%) 84 82	11, 17, 34, 53	0
1	B	390/413 (94%)	-0.40	13 (3%) 50 42	11, 17, 39, 58	0
All	All	774/826 (93%)	-0.45	17 (2%) 65 59	11, 17, 36, 58	0

All (17) RSRZ outliers are listed below:

Mol	Chain	Res	Type	RSRZ
1	B	33	ARG	6.5
1	B	428	VAL	4.3
1	B	32	THR	3.9
1	B	117	GLU	3.4
1	B	499	PHE	2.9
1	B	118	ASN	2.9
1	B	429	LYS	2.8
1	A	33	ARG	2.7
1	B	242	ALA	2.5
1	B	427	ASP	2.5
1	A	444	VAL	2.5
1	B	235	GLY	2.5
1	B	426	THR	2.4
1	B	243	ASP	2.3
1	B	2	THR	2.3
1	A	118	ASN	2.2
1	A	2	THR	2.1

6.2 Non-standard residues in protein, DNA, RNA chains [i](#)

There are no non-standard protein/DNA/RNA residues in this entry.

6.3 Carbohydrates [i](#)

There are no carbohydrates in this entry.

6.4 Ligands [i](#)

In the following table, the Atoms column lists the number of modelled atoms in the group and the number defined in the chemical component dictionary. LLDF column lists the quality of electron density of the group with respect to its neighbouring residues in protein, DNA or RNA chains. The B-factors column lists the minimum, median, 95th percentile and maximum values of B factors of atoms in the group. The column labelled 'Q< 0.9' lists the number of atoms with occupancy less than 0.9.

Mol	Type	Chain	Res	Atoms	RSCC	RSR	LLDF	B-factors(\AA^2)	Q<0.9
4	GOL	A	603	6/6	0.88	0.19	27.73	49,59,67,68	0
4	GOL	B	603	6/6	0.84	0.15	27.55	51,61,67,68	0
2	5GP	B	601	24/24	0.85	0.14	10.76	20,50,69,72	0
2	5GP	A	601	24/24	0.83	0.20	9.87	20,42,62,64	0
3	K	B	602	1/1	1.00	0.06	3.31	13,13,13,13	0
2	5GP	B	600	24/24	0.98	0.06	1.75	11,14,23,27	0
2	5GP	A	600	24/24	0.99	0.06	0.60	11,14,24,29	0
3	K	A	602	1/1	1.00	0.04	-1.44	13,13,13,13	0

6.5 Other polymers [i](#)

There are no such residues in this entry.