



Full wwPDB NMR Structure Validation Report ⓘ

Apr 26, 2016 – 06:31 PM BST

PDB ID : 1Z3J
Title : Solution Structure of MMP12 in the presence of N-isobutyl-N-4-methoxyphenylsulfonyl]glycyl hydroxamic acid (NNGH)
Authors : Bertini, I.; Calderone, V.; Cosenza, M.; Fragai, M.; Lee, Y.M.; Luchinat, C.; Mangani, S.; Terni, B.; Turano, P.
Deposited on : 2005-03-13

This is a Full wwPDB NMR Structure Validation Report for a publicly released PDB entry.
We welcome your comments at validation@mail.wwpdb.org
A user guide is available at
<http://wwpdb.org/validation/2016/NMRValidationReportHelp>
with specific help available everywhere you see the ⓘ symbol.

The following versions of software and data (see [references ⓘ](#)) were used in the production of this report:

Cyrange : Kirchner and Güntert (2011)
NmrClust : Kelley et al. (1996)
MolProbity : 4.02b-467
Mogul : 1.7.1 (RC1), CSD as537be (2016)
Percentile statistics : 20151230.v01 (using entries in the PDB archive December 30th 2015)
RCI : v_1n_11_5_13_A (Berjanski et al., 2005)
PANAV : Wang et al. (2010)
ShiftChecker : rb-20027457
Ideal geometry (proteins) : Engh & Huber (2001)
Ideal geometry (DNA, RNA) : Parkinson et al. (1996)
Validation Pipeline (wwPDB-VP) : rb-20027457

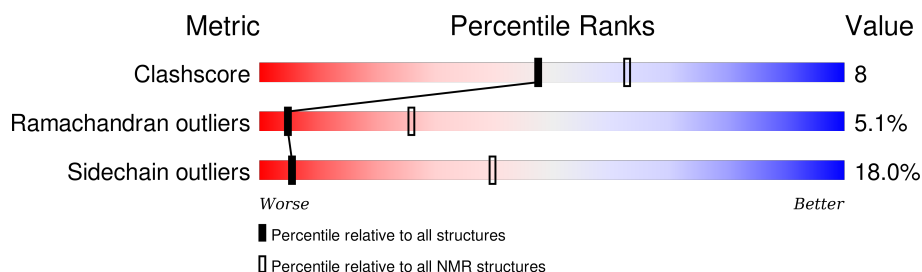
1 Overall quality at a glance

The following experimental techniques were used to determine the structure:

SOLUTION NMR

The overall completeness of chemical shifts assignment was not calculated.

Percentile scores (ranging between 0-100) for global validation metrics of the entry are shown in the following graphic. The table shows the number of entries on which the scores are based.



Metric	Whole archive (#Entries)	NMR archive (#Entries)
Clashscore	114402	11133
Ramachandran outliers	111179	9975
Sidechain outliers	111093	9958

The table below summarises the geometric issues observed across the polymeric chains and their fit to the experimental data. The red, orange, yellow and green segments indicate the fraction of residues that contain outliers for ≥ 3 , 2, 1 and 0 types of geometric quality criteria. A cyan segment indicates the fraction of residues that are not part of the well-defined cores, and a grey segment represents the fraction of residues that are not modelled. The numeric value for each fraction is indicated below the corresponding segment, with a dot representing fractions $\leq 5\%$.

Mol	Chain	Length	Quality of chain
1	A	159	 70% 23% . .

2 Ensemble composition and analysis ⓘ

This entry contains 1 models. Identification of well-defined residues and clustering analysis are not possible.

3 Entry composition

There are 4 unique types of molecules in this entry. The entry contains 2467 atoms, of which 1196 are hydrogens and 0 are deuteriums.

- Molecule 1 is a protein called Macrophage metalloelastase.

Mol	Chain	Residues	Atoms						Trace
1	A	159	Total	C	H	N	O	S	0
			2422	794	1177	217	230	4	

There are 2 discrepancies between the modelled and reference sequences:

Chain	Residue	Modelled	Actual	Comment	Reference
A	105	MET	-	INITIATING METHIONINE	UNP P39900
A	171	ASP	PHE	ENGINEERED	UNP P39900

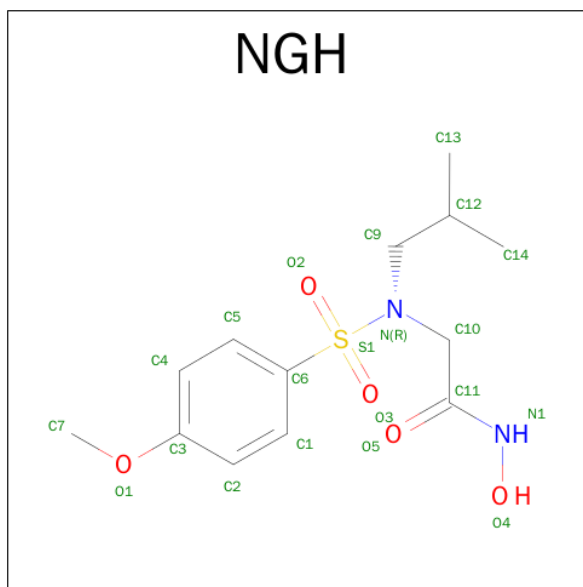
- Molecule 2 is ZINC ION (three-letter code: ZN) (formula: Zn).

Mol	Chain	Residues	Atoms	
2	A	2	Total	Zn
			2	2

- Molecule 3 is CALCIUM ION (three-letter code: CA) (formula: Ca).

Mol	Chain	Residues	Atoms	
3	A	3	Total	Ca
			3	3

- Molecule 4 is N-ISOBUTYL-N-[4-METHOXYPHENYLSULFONYL]GLYCYL HYDROX-AMIC ACID (three-letter code: NGH) (formula: C₁₃H₂₀N₂O₅S).

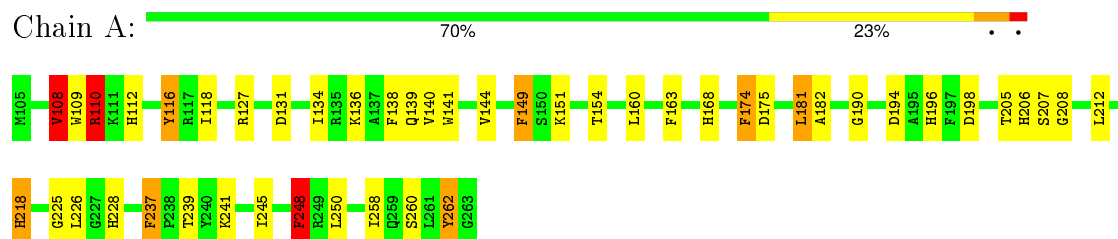


Mol	Chain	Residues	Atoms					
			Total	C	H	N	O	S
4	A	1	40	13	19	2	5	1

4 Residue-property plots

These plots are provided for all protein, RNA and DNA chains in the entry. The first graphic is the same as shown in the summary in section 1 of this report. The second graphic shows the sequence where residues are colour-coded according to the number of geometric quality criteria for which they contain at least one outlier: green = 0, yellow = 1, orange = 2 and red = 3 or more. Stretches of 2 or more consecutive residues without any outliers are shown as green connectors. Residues which are classified as ill-defined in the NMR ensemble, are shown in cyan with an underline colour-coded according to the previous scheme. Residues which were present in the experimental sample, but not modelled in the final structure are shown in grey.

- Molecule 1: Macrophage metalloelastase



5 Refinement protocol and experimental data overview

The models were refined using the following method: *distance geometry, simulated annealing, torsion angle dynamics, residue dipolar coupling*.

Of the 200 calculated structures, 1 were deposited, based on the following criterion: *minimized average structure*.

The following table shows the software used for structure solution, optimisation and refinement.

Software name	Classification	Version
DYANA	structure solution	1.5
AMBER	refinement	6.0

No chemical shift data was provided. No validations of the models with respect to experimental NMR restraints is performed at this time.

6 Model quality

6.1 Standard geometry

Bond lengths and bond angles in the following residue types are not validated in this section: ZN, NGH, CA

The Z score for a bond length (or angle) is the number of standard deviations the observed value is removed from the expected value. A bond length (or angle) with $|Z| > 5$ is considered an outlier worth inspection. RMSZ is the (average) root-mean-square of all Z scores of the bond lengths (or angles).

Mol	Chain	Bond lengths		Bond angles	
		RMSZ	#Z>5	RMSZ	#Z>5
1	A	0.62	0/1282 (0.0%)	1.13	4/1738 (0.2%)
All	All	0.62	0/1282 (0.0%)	1.13	4/1738 (0.2%)

Chiral center outliers are detected by calculating the chiral volume of a chiral center and verifying if the center is modelled as a planar moiety or with the opposite hand. A planarity outlier is detected by checking planarity of atoms in a peptide group, atoms in a mainchain group or atoms of a sidechain that are expected to be planar.

Mol	Chain	Chirality	Planarity
1	A	1	12
All	All	1	12

There are no bond-length outliers.

All angle outliers are listed below. They are sorted according to the Z-score.

Mol	Chain	Res	Type	Atoms	Z	Observed(°)	Ideal(°)
1	A	108	VAL	CB-CA-C	-8.30	95.62	111.40
1	A	181	LEU	CB-CA-C	6.03	121.66	110.20
1	A	108	VAL	CA-CB-CG1	5.73	119.50	110.90
1	A	108	VAL	N-CA-C	5.20	125.05	111.00

All chiral outliers are listed below.

Mol	Chain	Res	Type	Atoms
1	A	108	VAL	CA

All planar outliers are listed below.

Mol	Chain	Res	Type	Group
1	A	218	HIS	Sidechain

Continued on next page...

Continued from previous page...

Mol	Chain	Res	Type	Group
1	A	110	ARG	Sidechain
1	A	163	PHE	Sidechain
1	A	248	PHE	Sidechain
1	A	127	ARG	Sidechain
1	A	194	ASP	Sidechain
1	A	109	TRP	Peptide
1	A	149	PHE	Sidechain
1	A	262	TYR	Sidechain,Peptide
1	A	196	HIS	Sidechain
1	A	116	TYR	Sidechain

6.2 Too-close contacts ⓘ

In the following table, the Non-H and H(model) columns list the number of non-hydrogen atoms and hydrogen atoms in each chain respectively. The H(added) column lists the number of hydrogen atoms added and optimized by MolProbity. The Clashes column lists the number of clashes averaged over the ensemble.

Mol	Chain	Non-H	H(model)	H(added)	Clashes
1	A	1245	1177	1176	18
4	A	21	19	19	9
All	All	1271	1196	1195	19

The all-atom clashscore is defined as the number of clashes found per 1000 atoms (including hydrogen atoms). The all-atom clashscore for this structure is 8.

All clashes are listed below, sorted by their clash magnitude.

Atom-1	Atom-2	Clash(Å)	Distance(Å)
1:A:141:TRP:CZ3	1:A:258:ILE:HG21	0.76	2.15
1:A:140:VAL:HG22	1:A:248:PHE:CE1	0.62	2.29
1:A:181:LEU:HB2	4:A:269:NGH:H1	0.61	1.71
1:A:218:HIS:CE1	1:A:237:PHE:O	0.60	2.55
1:A:218:HIS:ND1	4:A:269:NGH:H4	0.58	2.13
1:A:226:LEU:HD11	1:A:258:ILE:HG22	0.58	1.76
1:A:181:LEU:HB2	4:A:269:NGH:C1	0.55	2.31
1:A:226:LEU:CD1	1:A:258:ILE:HG22	0.52	2.35
1:A:174:PHE:CZ	1:A:198:ASP:HA	0.50	2.41
1:A:218:HIS:HD1	4:A:269:NGH:H4	0.47	1.69
1:A:181:LEU:HD22	4:A:269:NGH:H1	0.45	1.88
1:A:218:HIS:HD1	4:A:269:NGH:H72	0.45	1.72
1:A:136:LYS:O	1:A:140:VAL:HG23	0.45	2.11

Continued on next page...

Continued from previous page...

Atom-1	Atom-2	Clash(Å)	Distance(Å)
4:A:269:NGH:H5	4:A:269:NGH:O5	0.44	2.12
1:A:116:TYR:CE1	1:A:138:PHE:CD2	0.41	3.08
1:A:182:ALA:O	4:A:269:NGH:N1	0.41	2.51
1:A:181:LEU:CD2	4:A:269:NGH:H1	0.41	2.46
1:A:138:PHE:CD2	1:A:149:PHE:CD2	0.41	3.08
1:A:250:LEU:HD22	1:A:250:LEU:N	0.40	2.30

6.3 Torsion angles [i](#)

6.3.1 Protein backbone [i](#)

In the following table, the Percentiles column shows the percent Ramachandran outliers of the chain as a percentile score with respect to all PDB entries followed by that with respect to all NMR entries. The Analysed column shows the number of residues for which the backbone conformation was analysed and the total number of residues.

Mol	Chain	Analysed	Favoured	Allowed	Outliers	Percentiles	
1	A	157/159 (99%)	130 (83%)	19 (12%)	8 (5%)	5	26
All	All	157/159 (99%)	130 (83%)	19 (12%)	8 (5%)	5	26

All 8 Ramachandran outliers are listed below. They are sorted by the frequency of occurrence in the ensemble.

Mol	Chain	Res	Type
1	A	190	GLY
1	A	175	ASP
1	A	225	GLY
1	A	108	VAL
1	A	110	ARG
1	A	228	HIS
1	A	248	PHE
1	A	208	GLY

6.3.2 Protein sidechains [i](#)

In the following table, the Percentiles column shows the percent sidechain outliers of the chain as a percentile score with respect to all PDB entries followed by that with respect to all NMR entries. The Analysed column shows the number of residues for which the sidechain conformation was analysed and the total number of residues.

Mol	Chain	Analysed	Rotameric	Outliers	Percentiles	
1	A	128/128 (100%)	105 (82%)	23 (18%)	5	40
All	All	128/128 (100%)	105 (82%)	23 (18%)	5	40

All 23 residues with a non-rotameric sidechain are listed below. They are sorted by the frequency of occurrence in the ensemble.

Mol	Chain	Res	Type
1	A	174	PHE
1	A	110	ARG
1	A	112	HIS
1	A	144	VAL
1	A	160	LEU
1	A	118	ILE
1	A	212	LEU
1	A	262	TYR
1	A	239	THR
1	A	131	ASP
1	A	151	LYS
1	A	205	THR
1	A	206	HIS
1	A	139	GLN
1	A	245	ILE
1	A	241	LYS
1	A	207	SER
1	A	260	SER
1	A	154	THR
1	A	108	VAL
1	A	237	PHE
1	A	134	ILE
1	A	168	HIS

6.3.3 RNA ⓘ

There are no RNA molecules in this entry.

6.4 Non-standard residues in protein, DNA, RNA chains ⓘ

There are no non-standard protein/DNA/RNA residues in this entry.

6.5 Carbohydrates ⓘ

There are no carbohydrates in this entry.

6.6 Ligand geometry ⓘ

Of 6 ligands modelled in this entry, 5 are monoatomic - leaving 1 for Mogul analysis.

In the following table, the Counts columns list the number of bonds for which Mogul statistics could be retrieved, the number of bonds that are observed in the model and the number of bonds that are defined in the chemical component dictionary. The Link column lists molecule types, if any, to which the group is linked. The Z score for a bond length is the number of standard deviations the observed value is removed from the expected value. A bond length with $|Z| > 2$ is considered an outlier worth inspection. RMSZ is the average root-mean-square of all Z scores of the bond lengths.

Mol	Type	Chain	Res	Link	Bond lengths		
					Counts	RMSZ	#Z>2
4	NGH	A	269	2	21,21,21	3.05	2 (9%)

In the following table, the Counts columns list the number of angles for which Mogul statistics could be retrieved, the number of angles that are observed in the model and the number of angles that are defined in the chemical component dictionary. The Link column lists molecule types, if any, to which the group is linked. The Z score for a bond angle is the number of standard deviations the observed value is removed from the expected value. A bond angle with $|Z| > 2$ is considered an outlier worth inspection. RMSZ is the average root-mean-square of all Z scores of the bond angles.

Mol	Type	Chain	Res	Link	Bond angles		
					Counts	RMSZ	#Z>2
4	NGH	A	269	2	27,29,29	2.21	1 (3%)

In the following table, the Chirals column lists the number of chiral outliers, the number of chiral centers analysed, the number of these observed in the model and the number defined in the chemical component dictionary. Similar counts are reported in the Torsion and Rings columns. '-' means no outliers of that kind were identified.

Mol	Type	Chain	Res	Link	Chirals	Torsions	Rings
4	NGH	A	269	2	-	0,24,24,24	0,1,1,1

All bond outliers are listed below. They are sorted according to the Z-score.

Mol	Chain	Res	Type	Atoms	Z	Observed(Å)	Ideal(Å)
4	A	269	NGH	S1-N	10.34	1.78	1.63

Continued on next page...

Continued from previous page...

Mol	Chain	Res	Type	Atoms	Z	Observed(Å)	Ideal(Å)
4	A	269	NGH	O4-N1	5.22	1.30	1.39

All angle outliers are listed below.

Mol	Chain	Res	Type	Atoms	Z	Observed(°)	Ideal(°)
4	A	269	NGH	O4-N1-C11	5.76	128.30	119.58

There are no chirality outliers.

There are no torsion outliers.

There are no ring outliers.

6.7 Other polymers [i](#)

There are no such molecules in this entry.

6.8 Polymer linkage issues [i](#)

There are no chain breaks in this entry.

7 Chemical shift validation

No chemical shift data were provided