



Full wwPDB X-ray Structure Validation Report ⓘ

Feb 1, 2016 – 12:07 AM GMT

PDB ID : 1ZSN
Title : Synthesis, Biological Activity, and X-Ray Crystal Structural Analysis of Diaryl Ether Inhibitors of Malarial Enoyl ACP Reductase. Part 1:4'-Substituted Triclosan Derivatives
Authors : Freundlich, J.S.; Anderson, J.W.; Sarantakis, D.; Shieh, H.M.; Yu, M.; Lucumi, E.; Kuo, M.; Schiehser, G.A.; Jacobus, D.P.; Jacobs Jr., W.R.; Fidock, D.A.; Sacchettini, J.C.
Deposited on : 2005-05-24
Resolution : 2.99 Å(reported)

This is a Full wwPDB X-ray Structure Validation Report for a publicly released PDB entry.
We welcome your comments at validation@mail.wwpdb.org
A user guide is available at
<http://wwpdb.org/validation/2016/XrayValidationReportHelp>
with specific help available everywhere you see the ⓘ symbol.

The following versions of software and data (see [references ⓘ](#)) were used in the production of this report:

MolProbity : 4.02b-467
Mogul : 1.7 (RC4), CSD as536be (2015)
Xtriage (Phenix) : 1.9-1692
EDS : rb-20026688
Percentile statistics : 20151230.v01 (using entries in the PDB archive December 30th 2015)
Refmac : 5.8.0135
CCP4 : 6.5.0
Ideal geometry (proteins) : Engh & Huber (2001)
Ideal geometry (DNA, RNA) : Parkinson et al. (1996)
Validation Pipeline (wwPDB-VP) : trunk26865

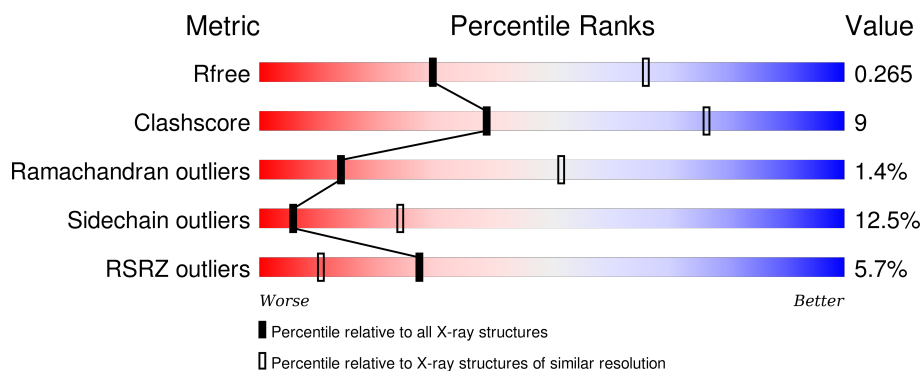
1 Overall quality at a glance ⓘ

The following experimental techniques were used to determine the structure:

X-RAY DIFFRACTION

The reported resolution of this entry is 2.99 Å.

Percentile scores (ranging between 0-100) for global validation metrics of the entry are shown in the following graphic. The table shows the number of entries on which the scores are based.



Metric	Whole archive (#Entries)	Similar resolution (#Entries, resolution range(Å))
R_{free}	91344	1578 (3.00-3.00)
Clashscore	102246	1912 (3.00-3.00)
Ramachandran outliers	100387	1853 (3.00-3.00)
Sidechain outliers	100360	1856 (3.00-3.00)
RSRZ outliers	91569	1592 (3.00-3.00)

The table below summarises the geometric issues observed across the polymeric chains and their fit to the electron density. The red, orange, yellow and green segments on the lower bar indicate the fraction of residues that contain outliers for ≥ 3 , 2, 1 and 0 types of geometric quality criteria. A grey segment represents the fraction of residues that are not modelled. The numeric value for each fraction is indicated below the corresponding segment, with a dot representing fractions $\leq 5\%$. The upper red bar (where present) indicates the fraction of residues that have poor fit to the electron density. The numeric value is given above the bar.

Mol	Chain	Length	Quality of chain
1	A	336	<div> <div>5%</div> <div>62%</div> <div>22%</div> <div>•</div> <div>13%</div> </div>
1	B	336	<div> <div>5%</div> <div>59%</div> <div>26%</div> <div>•</div> <div>13%</div> </div>

2 Entry composition [i](#)

There are 3 unique types of molecules in this entry. The entry contains 4764 atoms, of which 0 are hydrogens and 0 are deuteriums.

In the tables below, the ZeroOcc column contains the number of atoms modelled with zero occupancy, the AltConf column contains the number of residues with at least one atom in alternate conformation and the Trace column contains the number of residues modelled with at most 2 atoms.

- Molecule 1 is a protein called enoyl-acyl carrier reductase.

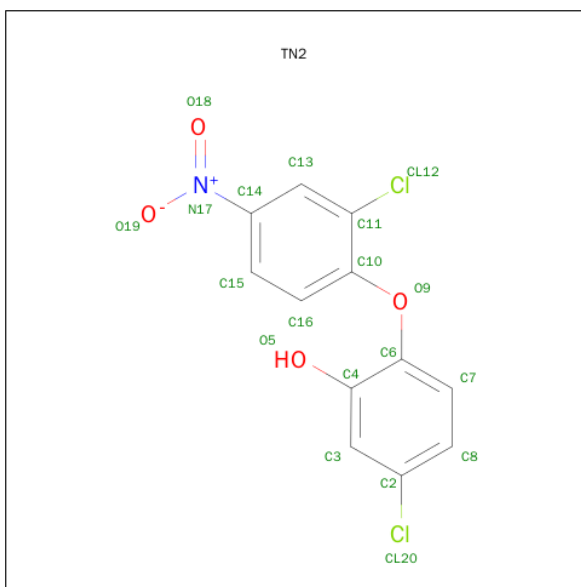
Mol	Chain	Residues	Atoms					ZeroOcc	AltConf	Trace
1	A	292	Total	C	N	O	S	0	2	0
			2321	1479	390	441	11			
1	B	292	Total	C	N	O	S	0	0	0
			2317	1477	390	439	11			

- Molecule 2 is NICOTINAMIDE-ADENINE-DINUCLEOTIDE (three-letter code: NAD) (formula: $C_{21}H_{27}N_7O_{14}P_2$).



Mol	Chain	Residues	Atoms					ZeroOcc	AltConf
2	A	1	Total	C	N	O	P	0	0
			44	21	7	14	2		
2	B	1	Total	C	N	O	P	0	0
			44	21	7	14	2		

- Molecule 3 is 5-CHLORO-2-(2-CHLORO-4-NITROPHENOXY)PHENOL (three-letter code: TN2) (formula: $C_{12}H_7Cl_2NO_4$).

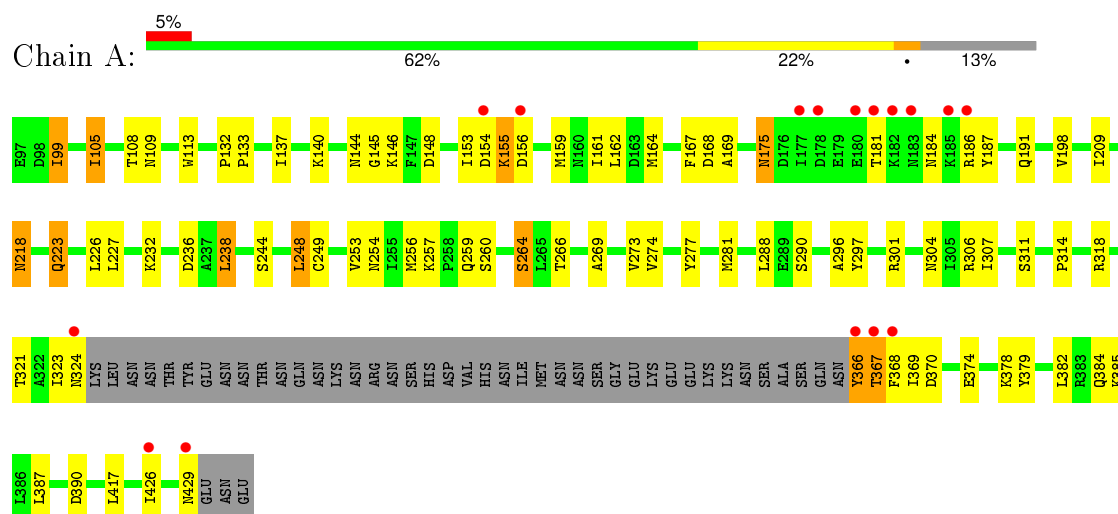


Mol	Chain	Residues	Atoms					ZeroOcc	AltConf
3	A	1	Total	C	Cl	N	O	0	0
			19	12	2	1	4		
3	B	1	Total	C	Cl	N	O	0	0
			19	12	2	1	4		

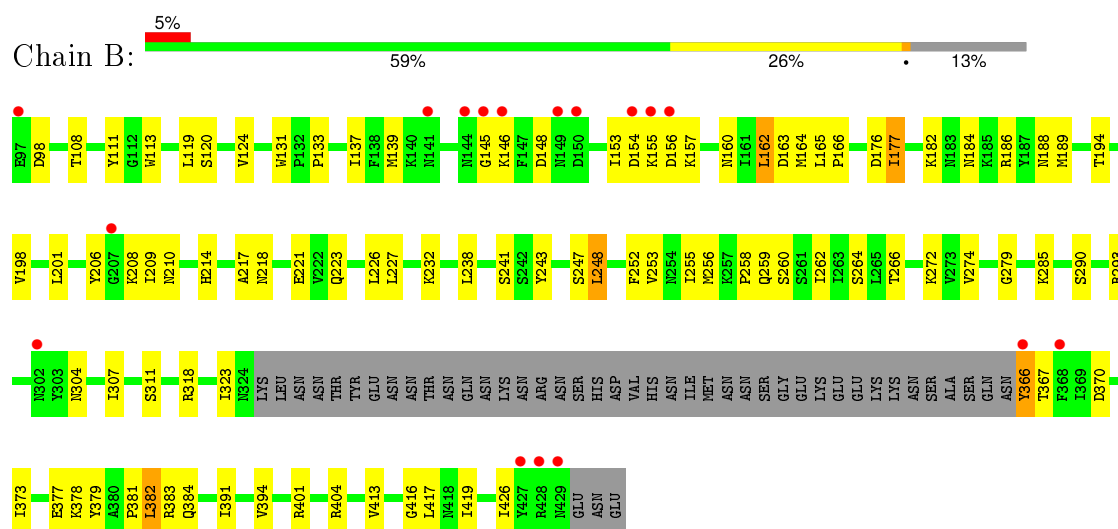
3 Residue-property plots

These plots are drawn for all protein, RNA and DNA chains in the entry. The first graphic for a chain summarises the proportions of errors displayed in the second graphic. The second graphic shows the sequence view annotated by issues in geometry and electron density. Residues are color-coded according to the number of geometric quality criteria for which they contain at least one outlier: green = 0, yellow = 1, orange = 2 and red = 3 or more. A red dot above a residue indicates a poor fit to the electron density ($RSRZ > 2$). Stretches of 2 or more consecutive residues without any outlier are shown as a green connector. Residues present in the sample, but not in the model, are shown in grey.

• Molecule 1: enoyl-acyl carrier reductase



• Molecule 1: enoyl-acyl carrier reductase



4 Data and refinement statistics

Property	Value	Source
Space group	P 43 21 2	Depositor
Cell constants a, b, c, α , β , γ	131.03Å 131.03Å 82.95Å 90.00° 90.00° 90.00°	Depositor
Resolution (Å)	29.68 – 2.99 29.68 – 2.99	Depositor EDS
% Data completeness (in resolution range)	99.8 (29.68-2.99) 99.9 (29.68-2.99)	Depositor EDS
R_{merge}	(Not available)	Depositor
R_{sym}	(Not available)	Depositor
$\langle I/\sigma(I) \rangle$ ¹	5.03 (at 3.00Å)	Xtriage
Refinement program	REFMAC 5.2.0005	Depositor
R, R_{free}	0.188 , 0.263 0.189 , 0.265	Depositor DCC
R_{free} test set	758 reflections (5.30%)	DCC
Wilson B-factor (Å ²)	39.2	Xtriage
Anisotropy	0.047	Xtriage
Bulk solvent k_{sol} (e/Å ³), B_{sol} (Å ²)	0.34 , 34.8	EDS
Estimated twinning fraction	No twinning to report.	Xtriage
L-test for twinning ²	$\langle L \rangle = 0.48$, $\langle L^2 \rangle = 0.31$	Xtriage
Outliers	1 of 15050 reflections (0.007%)	Xtriage
F_o, F_c correlation	0.92	EDS
Total number of atoms	4764	wwPDB-VP
Average B, all atoms (Å ²)	29.0	wwPDB-VP

Xtriage's analysis on translational NCS is as follows: *The largest off-origin peak in the Patterson function is 3.87% of the height of the origin peak. No significant pseudotranslation is detected.*

¹Intensities estimated from amplitudes.

²Theoretical values of $\langle |L| \rangle$, $\langle L^2 \rangle$ for acentric reflections are 0.5, 0.375 respectively for untwinned datasets, and 0.333, 0.2 for perfectly twinned datasets.

5 Model quality [i](#)

5.1 Standard geometry [i](#)

Bond lengths and bond angles in the following residue types are not validated in this section: NAD, TN2

The Z score for a bond length (or angle) is the number of standard deviations the observed value is removed from the expected value. A bond length (or angle) with $|Z| > 5$ is considered an outlier worth inspection. RMSZ is the root-mean-square of all Z scores of the bond lengths (or angles).

Mol	Chain	Bond lengths		Bond angles	
		RMSZ	$\# Z > 5$	RMSZ	$\# Z > 5$
1	A	0.59	0/2372	0.69	1/3200 (0.0%)
1	B	0.58	0/2360	0.69	0/3184
All	All	0.58	0/4732	0.69	1/6384 (0.0%)

There are no bond length outliers.

All (1) bond angle outliers are listed below:

Mol	Chain	Res	Type	Atoms	Z	Observed($^{\circ}$)	Ideal($^{\circ}$)
1	A	238	LEU	CA-CB-CG	-5.28	103.16	115.30

There are no chirality outliers.

There are no planarity outliers.

5.2 Too-close contacts [i](#)

In the following table, the Non-H and H(model) columns list the number of non-hydrogen atoms and hydrogen atoms in the chain respectively. The H(added) column lists the number of hydrogen atoms added and optimized by MolProbity. The Clashes column lists the number of clashes within the asymmetric unit, whereas Symm-Clashes lists symmetry related clashes.

Mol	Chain	Non-H	H(model)	H(added)	Clashes	Symm-Clashes
1	A	2321	0	2325	42	0
1	B	2317	0	2323	45	0
2	A	44	0	26	3	0
2	B	44	0	26	1	0
3	A	19	0	6	2	0
3	B	19	0	7	0	0
All	All	4764	0	4713	85	0

The all-atom clashscore is defined as the number of clashes found per 1000 atoms (including hydrogen atoms). The all-atom clashscore for this structure is 9.

All (85) close contacts within the same asymmetric unit are listed below, sorted by their clash magnitude.

Atom-1	Atom-2	Interatomic distance (Å)	Clash overlap (Å)
1:B:153:ILE:HB	1:B:157:LYS:HB3	1.51	0.90
1:B:217:ALA:HA	1:B:241:SER:HB3	1.56	0.86
1:B:145:GLY:HA2	1:B:148:ASP:OD2	1.79	0.82
1:B:139:MET:SD	1:B:164:MET:CE	2.76	0.73
1:B:139:MET:SD	1:B:164:MET:HE3	2.28	0.73
1:A:306:ARG:HG2	1:B:382:LEU:HD21	1.72	0.72
1:A:167:PHE:HD1	1:A:198:VAL:HG21	1.57	0.70
1:A:366:TYR:O	1:A:370:ASP:HB2	1.99	0.62
1:B:145:GLY:CA	1:B:148:ASP:OD2	2.50	0.60
1:A:387:LEU:O	1:A:390:ASP:HB2	2.02	0.60
1:A:297:TYR:HA	1:B:381:PRO:HB3	1.84	0.59
1:A:168:ASP:OD2	1:A:187:TYR:OH	2.16	0.59
1:A:167:PHE:CD1	1:A:198:VAL:HG21	2.40	0.56
1:B:184:ASN:ND2	1:B:186:ARG:H	2.03	0.55
1:A:99:ILE:HB	1:A:209:ILE:HG22	1.88	0.55
1:A:175:ASN:H	1:A:175:ASN:ND2	2.04	0.54
1:B:184:ASN:HD22	1:B:186:ARG:H	1.56	0.54
1:B:366:TYR:CD2	1:B:370:ASP:HB2	2.43	0.54
1:B:162:LEU:HD22	1:B:206:TYR:CE1	2.44	0.53
1:A:277:TYR:CE2	1:A:281:MET:HB3	2.43	0.53
1:A:301:ARG:HH21	1:B:379:TYR:HA	1.73	0.52
1:A:140:LYS:HG3	1:A:144:ASN:ND2	2.23	0.52
1:B:373:ILE:O	1:B:377:GLU:HG3	2.10	0.52
1:A:169:ALA:HB1	1:A:244:SER:HB2	1.92	0.52
1:B:259:GLN:HG3	1:B:304:ASN:ND2	2.24	0.52
1:B:131:TRP:CG	1:B:133:PRO:HD2	2.45	0.52
1:A:314:PRO:HA	2:A:450:NAD:O7N	2.11	0.51
1:A:264:SER:HB2	1:A:288:LEU:HD21	1.91	0.51
1:A:218:ASN:HA	3:A:500:TN2:O19	2.10	0.51
1:B:401:ARG:NH2	1:B:404:ARG:HE	2.08	0.51
1:A:153:ILE:O	1:A:154:ASP:HB3	2.12	0.50
1:B:274:VAL:HG22	1:B:274:VAL:O	2.12	0.50
1:B:252:PHE:CE1	1:B:255:ILE:HD11	2.47	0.50
1:A:108:THR:HG22	1:A:113:TRP:CE2	2.48	0.49
1:A:256:MET:CE	1:A:260:SER:HB3	2.42	0.49
1:B:119:LEU:O	1:B:124:VAL:HG13	2.12	0.49
1:A:223:GLN:NE2	1:A:323:ILE:O	2.46	0.49

Continued on next page...

Continued from previous page...

Atom-1	Atom-2	Interatomic distance (Å)	Clash overlap (Å)
1:A:161:ILE:HD13	1:A:164:MET:HE3	1.94	0.49
1:A:153:ILE:HD11	1:A:159:MET:HG3	1.94	0.49
1:A:259:GLN:HG2	1:A:304:ASN:ND2	2.27	0.49
1:A:367:THR:C	1:A:369:ILE:H	2.17	0.48
1:A:366:TYR:N	1:A:366:TYR:CD2	2.81	0.48
1:A:145:GLY:HA2	1:A:148:ASP:OD2	2.13	0.48
1:A:132:PRO:HB2	1:A:133:PRO:HD3	1.95	0.48
1:B:209:ILE:O	1:B:256:MET:HA	2.13	0.47
1:B:243:TYR:CE2	1:B:247:SER:HB2	2.49	0.47
1:A:366:TYR:N	1:A:366:TYR:HD2	2.12	0.47
1:B:221:GLU:O	1:B:279:GLY:HA3	2.15	0.47
1:B:176:ASP:O	1:B:177:ILE:C	2.53	0.47
1:A:140:LYS:HG3	1:A:144:ASN:HD21	1.81	0.46
2:A:450:NAD:H2N	2:A:450:NAD:O1N	2.15	0.46
1:B:252:PHE:CD1	1:B:255:ILE:HD11	2.50	0.46
1:A:269:ALA:HA	1:A:274:VAL:HG13	1.98	0.46
1:B:163:ASP:HB2	1:B:206:TYR:OH	2.16	0.45
1:B:266:THR:HA	1:B:285:LYS:HD2	1.98	0.45
1:B:274:VAL:O	1:B:274:VAL:CG2	2.65	0.45
1:B:290:SER:HA	1:B:293:ARG:NH1	2.31	0.45
1:B:210:ASN:HA	1:B:260:SER:OG	2.16	0.45
1:B:394:VAL:HG11	1:B:413:VAL:HG21	1.99	0.44
1:A:161:ILE:HD13	1:A:164:MET:CE	2.48	0.44
1:B:378:LYS:HA	1:B:383:ARG:NH1	2.33	0.44
1:A:249:CYS:O	1:A:253:VAL:HB	2.18	0.43
1:B:401:ARG:HA	1:B:401:ARG:HD2	1.81	0.43
1:A:266:THR:O	2:A:450:NAD:H6N	2.18	0.43
1:B:262:ILE:O	1:B:307:ILE:HA	2.17	0.43
1:A:301:ARG:NH2	1:B:379:TYR:HA	2.32	0.43
2:B:451:NAD:H2N	2:B:451:NAD:O1N	2.18	0.43
1:A:296:ALA:HA	1:A:307:ILE:CG2	2.48	0.43
1:B:248:LEU:O	1:B:252:PHE:HB2	2.18	0.43
1:A:378:LYS:HG2	1:A:379:TYR:CE2	2.54	0.43
1:B:416:GLY:O	1:B:419:ILE:HG12	2.18	0.42
1:B:111:TYR:CE1	1:B:391:ILE:HD13	2.54	0.42
1:B:272:LYS:HA	1:B:272:LYS:HD3	1.89	0.42
1:A:175:ASN:H	1:A:175:ASN:HD22	1.65	0.42
1:A:181:THR:HA	1:A:184:ASN:HB2	2.02	0.42
1:B:382:LEU:HD12	1:B:382:LEU:HA	1.82	0.42
1:A:369:ILE:HD13	3:A:500:TN2:H8	2.01	0.42
1:B:108:THR:HG22	1:B:113:TRP:CD2	2.55	0.42

Continued on next page...

Continued from previous page...

Atom-1	Atom-2	Interatomic distance (Å)	Clash overlap (Å)
1:A:256:MET:HE1	1:A:260:SER:HB3	2.02	0.41
1:B:258:PRO:O	1:B:259:GLN:HB2	2.20	0.41
1:A:244:SER:O	1:A:248:LEU:HB2	2.20	0.41
1:B:214:HIS:O	1:B:264:SER:HA	2.20	0.41
1:B:165:LEU:HA	1:B:166:PRO:HD2	1.91	0.41
1:B:194:THR:O	1:B:198:VAL:HG22	2.20	0.41
1:A:324:ASN:CB	1:A:367:THR:HG22	2.51	0.41

There are no symmetry-related clashes.

5.3 Torsion angles [i](#)

5.3.1 Protein backbone [i](#)

In the following table, the Percentiles column shows the percent Ramachandran outliers of the chain as a percentile score with respect to all X-ray entries followed by that with respect to entries of similar resolution.

The Analysed column shows the number of residues for which the backbone conformation was analysed, and the total number of residues.

Mol	Chain	Analysed	Favoured	Allowed	Outliers	Percentiles	
1	A	290/336 (86%)	262 (90%)	24 (8%)	4 (1%)	14	51
1	B	288/336 (86%)	261 (91%)	23 (8%)	4 (1%)	14	51
All	All	578/672 (86%)	523 (90%)	47 (8%)	8 (1%)	14	51

All (8) Ramachandran outliers are listed below:

Mol	Chain	Res	Type
1	A	367	THR
1	A	105	ILE
1	B	154	ASP
1	A	155	LYS
1	A	368	PHE
1	B	156	ASP
1	B	177	ILE
1	B	323	ILE

5.3.2 Protein sidechains ⓘ

In the following table, the Percentiles column shows the percent sidechain outliers of the chain as a percentile score with respect to all X-ray entries followed by that with respect to entries of similar resolution.

The Analysed column shows the number of residues for which the sidechain conformation was analysed, and the total number of residues.

Mol	Chain	Analysed	Rotameric	Outliers	Percentiles	
1	A	255/295 (86%)	220 (86%)	35 (14%)	4	20
1	B	253/295 (86%)	225 (89%)	28 (11%)	8	29
All	All	508/590 (86%)	445 (88%)	63 (12%)	6	24

All (63) residues with a non-rotameric sidechain are listed below:

Mol	Chain	Res	Type
1	A	99	ILE
1	A	105	ILE
1	A	109	ASN
1	A	137	ILE
1	A	146	LYS
1	A	155	LYS
1	A	156	ASP
1	A	162	LEU
1	A	175	ASN
1	A	186	ARG
1	A	191	GLN
1	A	218	ASN
1	A	223	GLN
1	A	226	LEU
1	A	227	LEU
1	A	232	LYS
1	A	236	ASP
1	A	238	LEU
1	A	248	LEU
1	A	254	ASN
1	A	257	LYS
1	A	264	SER
1	A	273	VAL
1	A	290	SER
1	A	311	SER
1	A	318	ARG
1	A	321	THR

Continued on next page...

Continued from previous page...

Mol	Chain	Res	Type
1	A	366	TYR
1	A	374	GLU
1	A	382	LEU
1	A	384	GLN
1	A	385	LYS
1	A	417	LEU
1	A	426	ILE
1	A	429	ASN
1	B	98	ASP
1	B	120	SER
1	B	137	ILE
1	B	146	LYS
1	B	155	LYS
1	B	160	ASN
1	B	162	LEU
1	B	182	LYS
1	B	188	ASN
1	B	189	MET
1	B	201	LEU
1	B	208	LYS
1	B	218	ASN
1	B	223	GLN
1	B	226	LEU
1	B	227	LEU
1	B	232	LYS
1	B	238	LEU
1	B	248	LEU
1	B	253	VAL
1	B	311	SER
1	B	318	ARG
1	B	366	TYR
1	B	367	THR
1	B	382	LEU
1	B	384	GLN
1	B	417	LEU
1	B	426	ILE

Some sidechains can be flipped to improve hydrogen bonding and reduce clashes. All (14) such sidechains are listed below:

Mol	Chain	Res	Type
1	A	144	ASN
1	A	175	ASN

Continued on next page...

Continued from previous page...

Mol	Chain	Res	Type
1	A	183	ASN
1	A	191	GLN
1	A	200	ASN
1	A	218	ASN
1	A	304	ASN
1	B	184	ASN
1	B	188	ASN
1	B	218	ASN
1	B	223	GLN
1	B	298	HIS
1	B	304	ASN
1	B	384	GLN

5.3.3 RNA [i](#)

There are no RNA molecules in this entry.

5.4 Non-standard residues in protein, DNA, RNA chains [i](#)

There are no non-standard protein/DNA/RNA residues in this entry.

5.5 Carbohydrates [i](#)

There are no carbohydrates in this entry.

5.6 Ligand geometry [i](#)

4 ligands are modelled in this entry.

In the following table, the Counts columns list the number of bonds (or angles) for which Mogul statistics could be retrieved, the number of bonds (or angles) that are observed in the model and the number of bonds (or angles) that are defined in the chemical component dictionary. The Link column lists molecule types, if any, to which the group is linked. The Z score for a bond length (or angle) is the number of standard deviations the observed value is removed from the expected value. A bond length (or angle) with $|Z| > 2$ is considered an outlier worth inspection. RMSZ is the root-mean-square of all Z scores of the bond lengths (or angles).

Mol	Type	Chain	Res	Link	Bond lengths			Bond angles		
					Counts	RMSZ	# $ Z > 2$	Counts	RMSZ	# $ Z > 2$
2	NAD	A	450	-	38,48,48	1.29	3 (7%)	47,73,73	2.08	8 (17%)

Mol	Type	Chain	Res	Link	Bond lengths			Bond angles		
					Counts	RMSZ	# Z > 2	Counts	RMSZ	# Z > 2
3	TN2	A	500	-	18,20,20	0.92	1 (5%)	25,28,28	1.23	4 (16%)
2	NAD	B	451	-	38,48,48	1.32	3 (7%)	47,73,73	1.84	7 (14%)
3	TN2	B	501	-	18,20,20	0.95	1 (5%)	25,28,28	1.07	1 (4%)

In the following table, the Chirals column lists the number of chiral outliers, the number of chiral centers analysed, the number of these observed in the model and the number defined in the chemical component dictionary. Similar counts are reported in the Torsion and Rings columns. '-' means no outliers of that kind were identified.

Mol	Type	Chain	Res	Link	Chirals	Torsions	Rings
2	NAD	A	450	-	-	0/22/62/62	0/5/5/5
3	TN2	A	500	-	-	0/8/8/8	0/2/2/2
2	NAD	B	451	-	-	0/22/62/62	0/5/5/5
3	TN2	B	501	-	-	0/8/8/8	0/2/2/2

All (8) bond length outliers are listed below:

Mol	Chain	Res	Type	Atoms	Z	Observed(Å)	Ideal(Å)
2	B	451	NAD	C7N-N7N	-3.50	1.25	1.33
2	A	450	NAD	C7N-N7N	-3.22	1.26	1.33
3	B	501	TN2	C2-CL20	2.33	1.79	1.74
3	A	500	TN2	C11-CL12	2.53	1.79	1.73
2	A	450	NAD	C5A-C4A	3.68	1.48	1.40
2	B	451	NAD	C5A-C4A	3.88	1.49	1.40
2	A	450	NAD	O7N-C7N	3.93	1.32	1.24
2	B	451	NAD	O7N-C7N	4.54	1.33	1.24

All (20) bond angle outliers are listed below:

Mol	Chain	Res	Type	Atoms	Z	Observed(°)	Ideal(°)
2	A	450	NAD	N3A-C2A-N1A	-9.05	121.96	128.89
2	B	451	NAD	N3A-C2A-N1A	-7.98	122.79	128.89
2	A	450	NAD	C4B-O4B-C1B	-4.60	104.67	109.72
2	B	451	NAD	C4A-C5A-N7A	-3.92	105.87	109.48
2	B	451	NAD	O7N-C7N-N7N	-3.82	117.22	122.59
2	A	450	NAD	O7N-C7N-N7N	-3.59	117.54	122.59
2	A	450	NAD	C4A-C5A-N7A	-2.99	106.73	109.48
2	A	450	NAD	PN-O3-PA	-2.85	124.72	132.73
2	B	451	NAD	PN-O3-PA	-2.64	125.32	132.73
3	A	500	TN2	C10-C11-CL12	-2.38	116.48	119.42
2	B	451	NAD	O3D-C3D-C4D	-2.31	104.13	111.05

Continued on next page...

Continued from previous page...

Mol	Chain	Res	Type	Atoms	Z	Observed(°)	Ideal(°)
2	A	450	NAD	C2A-N1A-C6A	2.17	122.65	118.77
3	A	500	TN2	O9-C6-C4	2.25	120.53	116.12
2	B	451	NAD	O7N-C7N-C3N	2.30	122.09	119.59
2	A	450	NAD	O4D-C1D-N1N	2.33	110.70	108.13
2	B	451	NAD	C3N-C7N-N7N	2.62	120.69	117.82
3	B	501	TN2	C6-O9-C10	2.64	124.15	117.75
3	A	500	TN2	C13-C14-N17	2.75	121.22	118.80
3	A	500	TN2	C13-C11-CL12	2.97	123.08	118.50
2	A	450	NAD	C3N-C7N-N7N	5.23	123.54	117.82

There are no chirality outliers.

There are no torsion outliers.

There are no ring outliers.

3 monomers are involved in 6 short contacts:

Mol	Chain	Res	Type	Clashes	Symm-Clashes
2	A	450	NAD	3	0
3	A	500	TN2	2	0
2	B	451	NAD	1	0

5.7 Other polymers [i](#)

There are no such residues in this entry.

5.8 Polymer linkage issues [i](#)

There are no chain breaks in this entry.

6 Fit of model and data ⓘ

6.1 Protein, DNA and RNA chains ⓘ

In the following table, the column labelled ‘#RSRZ> 2’ contains the number (and percentage) of RSRZ outliers, followed by percent RSRZ outliers for the chain as percentile scores relative to all X-ray entries and entries of similar resolution. The OWAB column contains the minimum, median, 95th percentile and maximum values of the occupancy-weighted average B-factor per residue. The column labelled ‘Q< 0.9’ lists the number of (and percentage) of residues with an average occupancy less than 0.9.

Mol	Chain	Analysed	<RSRZ>	#RSRZ>2		OWAB(Å ²)	Q<0.9
1	A	292/336 (86%)	-0.14	16 (5%)	29 11	10, 25, 57, 80	0
1	B	292/336 (86%)	-0.08	17 (5%)	26 10	10, 25, 57, 91	0
All	All	584/672 (86%)	-0.11	33 (5%)	27 10	10, 25, 57, 91	0

All (33) RSRZ outliers are listed below:

Mol	Chain	Res	Type	RSRZ
1	B	155	LYS	7.1
1	A	366	TYR	6.3
1	B	156	ASP	5.7
1	B	429	ASN	5.4
1	A	178	ASP	5.2
1	B	366	TYR	5.0
1	A	183	ASN	4.4
1	A	324	ASN	4.4
1	A	156	ASP	4.2
1	B	154	ASP	3.7
1	B	141	ASN	3.7
1	B	428	ARG	3.6
1	B	149	ASN	3.6
1	B	368	PHE	3.4
1	A	180	GLU	3.3
1	A	429	ASN	3.1
1	A	181	THR	3.1
1	B	146	LYS	2.9
1	A	186	ARG	2.9
1	A	368	PHE	2.8
1	B	145	GLY	2.8
1	A	426	ILE	2.7
1	B	207	GLY	2.7
1	B	144	ASN	2.6

Continued on next page...

Continued from previous page...

Mol	Chain	Res	Type	RSRZ
1	A	182	LYS	2.5
1	A	367	THR	2.5
1	A	154	ASP	2.3
1	B	97	GLU	2.3
1	A	185	LYS	2.2
1	B	427	TYR	2.2
1	A	177	ILE	2.1
1	B	302	ASN	2.1
1	B	150	ASP	2.0

6.2 Non-standard residues in protein, DNA, RNA chains [i](#)

There are no non-standard protein/DNA/RNA residues in this entry.

6.3 Carbohydrates [i](#)

There are no carbohydrates in this entry.

6.4 Ligands [i](#)

In the following table, the Atoms column lists the number of modelled atoms in the group and the number defined in the chemical component dictionary. LLDF column lists the quality of electron density of the group with respect to its neighbouring residues in protein, DNA or RNA chains. The B-factors column lists the minimum, median, 95th percentile and maximum values of B factors of atoms in the group. The column labelled 'Q < 0.9' lists the number of atoms with occupancy less than 0.9.

Mol	Type	Chain	Res	Atoms	RSCC	RSR	LLDF	B-factors(Å ²)	Q<0.9
2	NAD	B	451	44/44	0.96	0.14	-0.04	8,26,39,46	0
2	NAD	A	450	44/44	0.95	0.16	-0.26	2,24,43,48	0
3	TN2	A	500	19/19	0.97	0.11	-0.89	12,24,32,33	0
3	TN2	B	501	19/19	0.97	0.11	-1.09	15,23,34,36	0

6.5 Other polymers [i](#)

There are no such residues in this entry.