



Full wwPDB X-ray Structure Validation Report ⓘ

Feb 19, 2016 – 09:12 PM GMT

PDB ID : 4ZSA
Title : Crystal structure of FGFR1 kinase domain in complex with 7n
Authors : Liu, Q.F.; Xu, Y.C.
Deposited on : 2015-05-13
Resolution : 2.00 Å(reported)

This is a Full wwPDB X-ray Structure Validation Report for a publicly released PDB entry.
We welcome your comments at validation@mail.wwpdb.org
A user guide is available at
<http://wwpdb.org/validation/2016/XrayValidationReportHelp>
with specific help available everywhere you see the ⓘ symbol.

The following versions of software and data (see [references ⓘ](#)) were used in the production of this report:

MolProbity : 4.02b-467
Mogul : 1.7.1 (RC1), CSD as537be (2016)
Xtriage (Phenix) : 1.9-1692
EDS : rb-20026982
Percentile statistics : 20151230.v01 (using entries in the PDB archive December 30th 2015)
Refmac : 5.8.0135
CCP4 : 6.5.0
Ideal geometry (proteins) : Engh & Huber (2001)
Ideal geometry (DNA, RNA) : Parkinson et al. (1996)
Validation Pipeline (wwPDB-VP) : rb-20026982

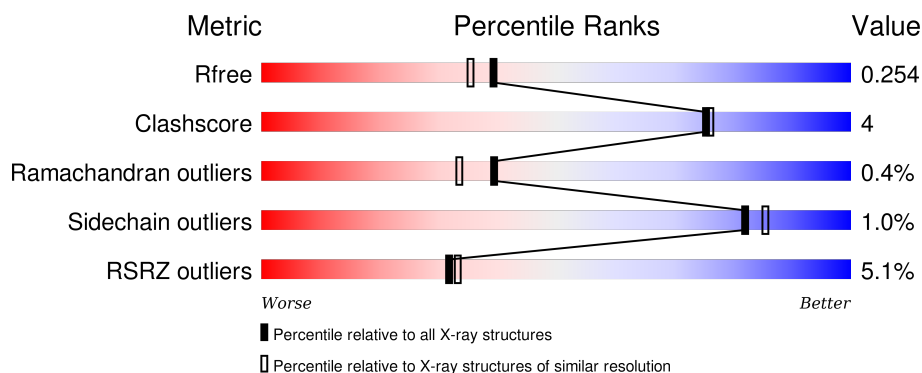
1 Overall quality at a glance

The following experimental techniques were used to determine the structure:

X-RAY DIFFRACTION

The reported resolution of this entry is 2.00 Å.

Percentile scores (ranging between 0-100) for global validation metrics of the entry are shown in the following graphic. The table shows the number of entries on which the scores are based.



Metric	Whole archive (#Entries)	Similar resolution (#Entries, resolution range(Å))
R_{free}	91344	6249 (2.00-2.00)
Clashscore	102246	7340 (2.00-2.00)
Ramachandran outliers	100387	7248 (2.00-2.00)
Sidechain outliers	100360	7247 (2.00-2.00)
RSRZ outliers	91569	6262 (2.00-2.00)

The table below summarises the geometric issues observed across the polymeric chains and their fit to the electron density. The red, orange, yellow and green segments on the lower bar indicate the fraction of residues that contain outliers for ≥ 3 , 2, 1 and 0 types of geometric quality criteria. A grey segment represents the fraction of residues that are not modelled. The numeric value for each fraction is indicated below the corresponding segment, with a dot representing fractions $\leq 5\%$. The upper red bar (where present) indicates the fraction of residues that have poor fit to the electron density. The numeric value is given above the bar.

Mol	Chain	Length	Quality of chain
1	A	308	<div> <div>3%</div> <div>84%</div> <div>9%</div> <div>6%</div> </div>
1	B	308	<div> <div>7%</div> <div>83%</div> <div>8%</div> <div>8%</div> </div>

2 Entry composition [i](#)

There are 3 unique types of molecules in this entry. The entry contains 4850 atoms, of which 0 are hydrogens and 0 are deuteriums.

In the tables below, the ZeroOcc column contains the number of atoms modelled with zero occupancy, the AltConf column contains the number of residues with at least one atom in alternate conformation and the Trace column contains the number of residues modelled with at most 2 atoms.

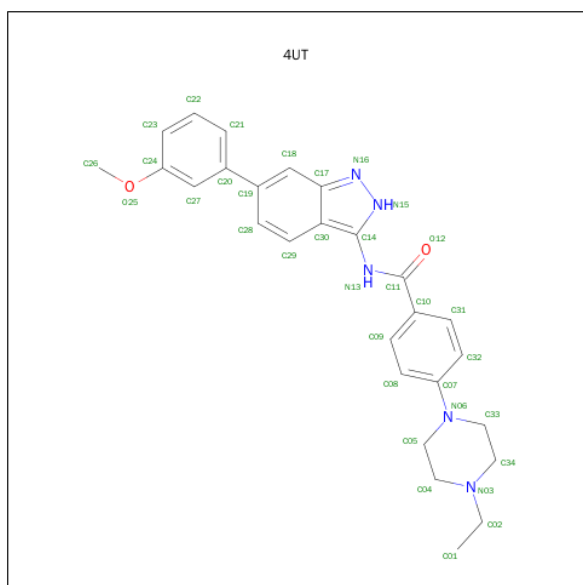
- Molecule 1 is a protein called Fibroblast growth factor receptor 1.

Mol	Chain	Residues	Atoms					ZeroOcc	AltConf	Trace
1	A	290	Total	C	N	O	S	0	1	1
			2289	1454	395	422	18			
1	B	282	Total	C	N	O	S	0	1	0
			2227	1418	377	414	18			

There are 4 discrepancies between the modelled and reference sequences:

Chain	Residue	Modelled	Actual	Comment	Reference
A	488	ALA	CYS	engineered mutation	UNP P11362
A	584	SER	CYS	engineered mutation	UNP P11362
B	488	ALA	CYS	engineered mutation	UNP P11362
B	584	SER	CYS	engineered mutation	UNP P11362

- Molecule 2 is 4-(4-ethylpiperazin-1-yl)-N-[6-(3-methoxyphenyl)-2H-indazol-3-yl]benzamide (three-letter code: 4UT) (formula: C₂₇H₂₉N₅O₂).



Mol	Chain	Residues	Atoms				ZeroOcc	AltConf
2	A	1	Total 34	C 27	N 5	O 2	0	0
2	B	1	Total 34	C 27	N 5	O 2	0	0

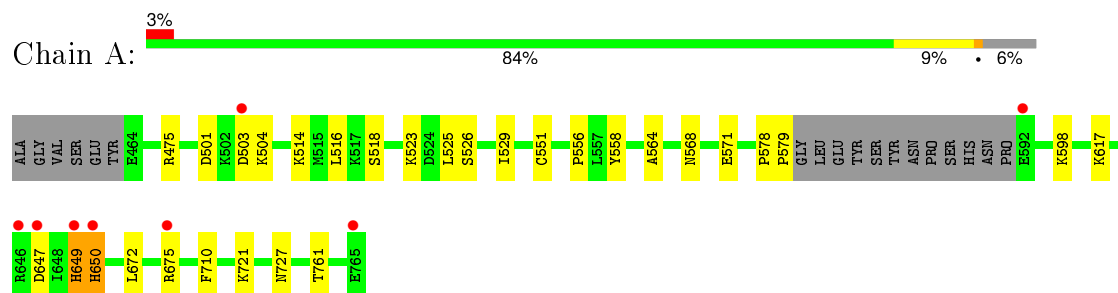
- Molecule 3 is water.

Mol	Chain	Residues	Atoms		ZeroOcc	AltConf
3	A	168	Total 168	O 168	0	0
3	B	98	Total 98	O 98	0	0

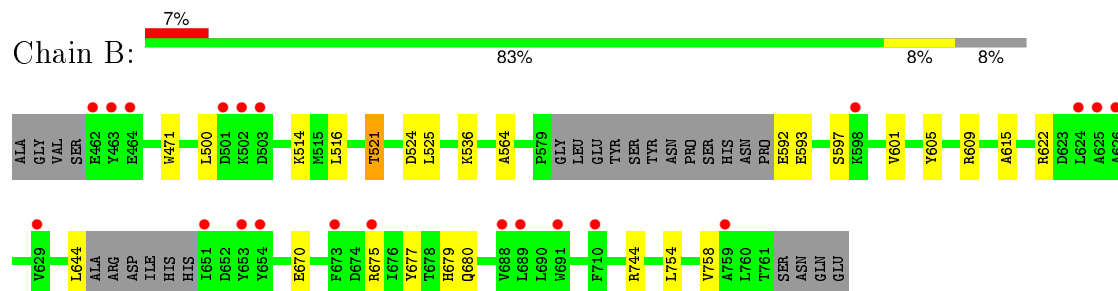
3 Residue-property plots [i](#)

These plots are drawn for all protein, RNA and DNA chains in the entry. The first graphic for a chain summarises the proportions of errors displayed in the second graphic. The second graphic shows the sequence view annotated by issues in geometry and electron density. Residues are color-coded according to the number of geometric quality criteria for which they contain at least one outlier: green = 0, yellow = 1, orange = 2 and red = 3 or more. A red dot above a residue indicates a poor fit to the electron density ($RSRZ > 2$). Stretches of 2 or more consecutive residues without any outlier are shown as a green connector. Residues present in the sample, but not in the model, are shown in grey.

- Molecule 1: Fibroblast growth factor receptor 1



- Molecule 1: Fibroblast growth factor receptor 1



4 Data and refinement statistics

Property	Value	Source
Space group	C 1 2 1	Depositor
Cell constants a, b, c, α , β , γ	209.91Å 57.18Å 65.55Å 90.00° 107.47° 90.00°	Depositor
Resolution (Å)	34.37 – 2.00 34.37 – 2.00	Depositor EDS
% Data completeness (in resolution range)	94.3 (34.37-2.00) 94.3 (34.37-2.00)	Depositor EDS
R_{merge}	0.06	Depositor
R_{sym}	(Not available)	Depositor
$\langle I/\sigma(I) \rangle$ ¹	4.86 (at 2.00Å)	Xtriage
Refinement program	PHENIX	Depositor
R, R_{free}	0.204 , 0.254 0.212 , 0.254	Depositor DCC
R_{free} test set	2005 reflections (4.40%)	DCC
Wilson B-factor (Å ²)	34.0	Xtriage
Anisotropy	0.628	Xtriage
Bulk solvent k_{sol} (e/Å ³), B_{sol} (Å ²)	0.35 , 47.3	EDS
Estimated twinning fraction	0.022 for -h-2*k,l	Xtriage
L-test for twinning ²	$\langle L \rangle = 0.49$, $\langle L^2 \rangle = 0.32$	Xtriage
Outliers	0 of 47546 reflections	Xtriage
F_o, F_c correlation	0.95	EDS
Total number of atoms	4850	wwPDB-VP
Average B, all atoms (Å ²)	42.0	wwPDB-VP

Xtriage's analysis on translational NCS is as follows: *The largest off-origin peak in the Patterson function is 5.48% of the height of the origin peak. No significant pseudotranslation is detected.*

¹Intensities estimated from amplitudes.

²Theoretical values of $\langle |L| \rangle$, $\langle L^2 \rangle$ for acentric reflections are 0.5, 0.375 respectively for untwinned datasets, and 0.333, 0.2 for perfectly twinned datasets.

5 Model quality [i](#)

5.1 Standard geometry [i](#)

Bond lengths and bond angles in the following residue types are not validated in this section: 4UT

The Z score for a bond length (or angle) is the number of standard deviations the observed value is removed from the expected value. A bond length (or angle) with $|Z| > 5$ is considered an outlier worth inspection. RMSZ is the root-mean-square of all Z scores of the bond lengths (or angles).

Mol	Chain	Bond lengths		Bond angles	
		RMSZ	$\# Z > 5$	RMSZ	$\# Z > 5$
1	A	0.42	0/2342	0.58	0/3166
1	B	0.38	0/2278	0.54	0/3081
All	All	0.40	0/4620	0.56	0/6247

Chiral center outliers are detected by calculating the chiral volume of a chiral center and verifying if the center is modelled as a planar moiety or with the opposite hand. A planarity outlier is detected by checking planarity of atoms in a peptide group, atoms in a mainchain group or atoms of a sidechain that are expected to be planar.

Mol	Chain	#Chirality outliers	#Planarity outliers
1	A	0	1

There are no bond length outliers.

There are no bond angle outliers.

There are no chirality outliers.

All (1) planarity outliers are listed below:

Mol	Chain	Res	Type	Group
1	A	649	HIS	Peptide

5.2 Too-close contacts [i](#)

In the following table, the Non-H and H(model) columns list the number of non-hydrogen atoms and hydrogen atoms in the chain respectively. The H(added) column lists the number of hydrogen atoms added and optimized by MolProbity. The Clashes column lists the number of clashes within the asymmetric unit, whereas Symm-Clashes lists symmetry related clashes.

Mol	Chain	Non-H	H(model)	H(added)	Clashes	Symm-Clashes
1	A	2289	0	2289	20	0
1	B	2227	0	2211	14	0
2	A	34	0	29	3	0
2	B	34	0	29	2	0
3	A	168	0	0	1	0
3	B	98	0	0	2	0
All	All	4850	0	4558	36	0

The all-atom clashscore is defined as the number of clashes found per 1000 atoms (including hydrogen atoms). The all-atom clashscore for this structure is 4.

All (36) close contacts within the same asymmetric unit are listed below, sorted by their clash magnitude.

Atom-1	Atom-2	Interatomic distance (Å)	Clash overlap (Å)
1:A:564:ALA:H	2:A:801:4UT:H20	1.18	0.86
1:B:564:ALA:H	2:B:801:4UT:H20	1.20	0.85
1:A:649:HIS:HA	1:A:675:ARG:HH21	1.62	0.65
1:A:649:HIS:O	1:A:650:HIS:CD2	2.53	0.61
1:A:672:LEU:HD21	1:A:710:PHE:CE1	2.36	0.60
1:A:516:LEU:HD11	1:A:525:LEU:HD13	1.86	0.57
1:A:523:LYS:HD2	1:A:526:SER:OG	2.06	0.56
1:A:721:LYS:NZ	1:A:727:ASN:OD1	2.40	0.54
1:B:597:SER:O	1:B:601:VAL:HG23	2.08	0.54
1:B:471:TRP:CD1	1:B:536:LYS:HE2	2.43	0.54
1:B:622:ARG:HG2	1:B:677:TYR:CD2	2.42	0.54
1:B:670:GLU:OE2	1:B:744:ARG:NH1	2.38	0.53
1:A:617:LYS:NZ	3:A:911:HOH:O	2.40	0.52
1:A:503:ASP:OD1	1:A:504:LYS:N	2.43	0.52
1:B:754:LEU:O	1:B:758:VAL:HG23	2.10	0.52
2:B:801:4UT:H24	2:B:801:4UT:O12	2.11	0.51
1:B:514:LYS:NZ	3:B:903:HOH:O	2.43	0.51
1:B:593:GLU:CD	1:B:593:GLU:H	2.12	0.51
1:B:592:GLU:N	3:B:905:HOH:O	2.44	0.51
1:A:649:HIS:HD2	1:A:675:ARG:CZ	2.24	0.50
1:B:605:TYR:CE2	1:B:609:ARG:HD2	2.48	0.48
1:A:598:LYS:NZ	1:A:761:THR:O	2.46	0.47
1:A:475:ARG:NH1	1:A:556:PRO:HD2	2.30	0.47
1:A:525:LEU:O	1:A:529:ILE:HG13	2.16	0.46
1:B:680:GLN:HE21	1:B:744:ARG:HB2	1.81	0.45
2:A:801:4UT:H24	2:A:801:4UT:O12	2.17	0.45
1:A:523:LYS:HD2	1:A:523:LYS:HA	1.65	0.45
1:B:521:THR:H	1:B:524:ASP:HB2	1.81	0.45

Continued on next page...

Continued from previous page...

Atom-1	Atom-2	Interatomic distance (Å)	Clash overlap (Å)
1:A:501:ASP:CG	1:A:503:ASP:OD1	2.56	0.44
1:A:578:PRO:HA	1:A:579:PRO:HD3	1.85	0.43
1:A:672:LEU:HD21	1:A:710:PHE:CZ	2.53	0.42
1:A:568:ASN:OD1	1:A:571:GLU:HG3	2.19	0.42
1:A:514:LYS:HD3	2:A:801:4UT:H5	2.02	0.42
1:A:551:CYS:HB2	1:A:558:TYR:HB2	2.01	0.42
1:B:516:LEU:HD11	1:B:525:LEU:HB2	2.03	0.41
1:B:615:ALA:HA	1:B:679:HIS:CE1	2.56	0.41

There are no symmetry-related clashes.

5.3 Torsion angles [i](#)

5.3.1 Protein backbone [i](#)

In the following table, the Percentiles column shows the percent Ramachandran outliers of the chain as a percentile score with respect to all X-ray entries followed by that with respect to entries of similar resolution.

The Analysed column shows the number of residues for which the backbone conformation was analysed, and the total number of residues.

Mol	Chain	Analysed	Favoured	Allowed	Outliers	Percentiles	
1	A	287/308 (93%)	283 (99%)	2 (1%)	2 (1%)	26	19
1	B	277/308 (90%)	271 (98%)	6 (2%)	0	100	100
All	All	564/616 (92%)	554 (98%)	8 (1%)	2 (0%)	39	33

All (2) Ramachandran outliers are listed below:

Mol	Chain	Res	Type
1	A	650	HIS
1	A	647	ASP

5.3.2 Protein sidechains [i](#)

In the following table, the Percentiles column shows the percent sidechain outliers of the chain as a percentile score with respect to all X-ray entries followed by that with respect to entries of similar resolution.

The Analysed column shows the number of residues for which the sidechain conformation was

analysed, and the total number of residues.

Mol	Chain	Analysed	Rotameric	Outliers	Percentiles	
1	A	249/269 (93%)	248 (100%)	1 (0%)	93	95
1	B	241/269 (90%)	237 (98%)	4 (2%)	68	71
All	All	490/538 (91%)	485 (99%)	5 (1%)	82	85

All (5) residues with a non-rotameric sidechain are listed below:

Mol	Chain	Res	Type
1	A	518	SER
1	B	500	LEU
1	B	521	THR
1	B	644	LEU
1	B	675	ARG

Some sidechains can be flipped to improve hydrogen bonding and reduce clashes. All (2) such sidechains are listed below:

Mol	Chain	Res	Type
1	A	649	HIS
1	A	650	HIS

5.3.3 RNA [i](#)

There are no RNA molecules in this entry.

5.4 Non-standard residues in protein, DNA, RNA chains [i](#)

There are no non-standard protein/DNA/RNA residues in this entry.

5.5 Carbohydrates [i](#)

There are no carbohydrates in this entry.

5.6 Ligand geometry [i](#)

2 ligands are modelled in this entry.

In the following table, the Counts columns list the number of bonds (or angles) for which Mogul statistics could be retrieved, the number of bonds (or angles) that are observed in the model and

the number of bonds (or angles) that are defined in the chemical component dictionary. The Link column lists molecule types, if any, to which the group is linked. The Z score for a bond length (or angle) is the number of standard deviations the observed value is removed from the expected value. A bond length (or angle) with $|Z| > 2$ is considered an outlier worth inspection. RMSZ is the root-mean-square of all Z scores of the bond lengths (or angles).

Mol	Type	Chain	Res	Link	Bond lengths			Bond angles		
					Counts	RMSZ	# Z > 2	Counts	RMSZ	# Z > 2
2	4UT	A	801	-	36,38,38	2.11	9 (25%)	45,53,53	1.02	3 (6%)
2	4UT	B	801	-	36,38,38	2.05	9 (25%)	45,53,53	0.95	2 (4%)

In the following table, the Chirals column lists the number of chiral outliers, the number of chiral centers analysed, the number of these observed in the model and the number defined in the chemical component dictionary. Similar counts are reported in the Torsion and Rings columns. '-' means no outliers of that kind were identified.

Mol	Type	Chain	Res	Link	Chirals	Torsions	Rings
2	4UT	A	801	-	-	0/18/30/30	0/5/5/5
2	4UT	B	801	-	-	0/18/30/30	0/5/5/5

All (18) bond length outliers are listed below:

Mol	Chain	Res	Type	Atoms	Z	Observed(Å)	Ideal(Å)
2	B	801	4UT	C33-N06	-6.17	1.37	1.46
2	A	801	4UT	C33-N06	-5.94	1.37	1.46
2	A	801	4UT	C05-N06	-5.79	1.38	1.46
2	B	801	4UT	C05-N06	-5.66	1.38	1.46
2	B	801	4UT	C02-N03	-4.38	1.25	1.47
2	A	801	4UT	C02-N03	-4.33	1.25	1.47
2	B	801	4UT	C19-C20	-3.35	1.40	1.49
2	A	801	4UT	C34-N03	-3.16	1.38	1.47
2	B	801	4UT	C34-N03	-3.02	1.38	1.47
2	A	801	4UT	C19-C20	-2.94	1.41	1.49
2	A	801	4UT	C04-N03	-2.81	1.39	1.47
2	B	801	4UT	C04-N03	-2.63	1.40	1.47
2	B	801	4UT	N16-N15	-2.09	1.33	1.37
2	A	801	4UT	C29-C28	2.29	1.41	1.36
2	B	801	4UT	C11-N13	2.46	1.42	1.35
2	A	801	4UT	C11-N13	2.81	1.42	1.35
2	B	801	4UT	C14-N13	3.34	1.42	1.36
2	A	801	4UT	C14-N13	4.13	1.44	1.36

All (5) bond angle outliers are listed below:

Mol	Chain	Res	Type	Atoms	Z	Observed(°)	Ideal(°)
2	A	801	4UT	C34-N03-C02	-2.14	107.08	110.88
2	B	801	4UT	C34-N03-C02	-2.06	107.21	110.88
2	A	801	4UT	C08-C07-N06	-2.03	118.58	121.39
2	B	801	4UT	C05-C04-N03	2.54	115.60	110.65
2	A	801	4UT	C34-C33-N06	3.46	117.07	110.59

There are no chirality outliers.

There are no torsion outliers.

There are no ring outliers.

2 monomers are involved in 5 short contacts:

Mol	Chain	Res	Type	Clashes	Symm-Clashes
2	A	801	4UT	3	0
2	B	801	4UT	2	0

5.7 Other polymers [i](#)

There are no such residues in this entry.

5.8 Polymer linkage issues [i](#)

There are no chain breaks in this entry.

6 Fit of model and data ⓘ

6.1 Protein, DNA and RNA chains ⓘ

In the following table, the column labelled ‘#RSRZ> 2’ contains the number (and percentage) of RSRZ outliers, followed by percent RSRZ outliers for the chain as percentile scores relative to all X-ray entries and entries of similar resolution. The OWAB column contains the minimum, median, 95th percentile and maximum values of the occupancy-weighted average B-factor per residue. The column labelled ‘Q< 0.9’ lists the number of (and percentage) of residues with an average occupancy less than 0.9.

Mol	Chain	Analysed	<RSRZ>	#RSRZ>2	OWAB(Å ²)	Q<0.9
1	A	290/308 (94%)	0.01	8 (2%) 56 57	25, 38, 63, 89	0
1	B	282/308 (91%)	0.28	21 (7%) 17 18	29, 44, 64, 82	0
All	All	572/616 (92%)	0.14	29 (5%) 32 33	25, 41, 64, 89	0

All (29) RSRZ outliers are listed below:

Mol	Chain	Res	Type	RSRZ
1	B	463	TYR	5.8
1	B	462	GLU	5.3
1	A	503	ASP	4.4
1	B	653	TYR	3.7
1	A	646	ARG	3.6
1	B	673	PHE	3.5
1	B	651	ILE	3.3
1	B	626	ALA	3.1
1	B	501	ASP	3.0
1	B	464	GLU	3.0
1	A	650	HIS	2.9
1	A	649	HIS	2.9
1	A	592	GLU	2.8
1	B	688	VAL	2.8
1	B	675	ARG	2.8
1	A	675	ARG	2.7
1	B	502	LYS	2.7
1	B	689	LEU	2.5
1	B	625	ALA	2.4
1	B	759	ALA	2.4
1	B	624	LEU	2.3
1	B	691	TRP	2.3
1	B	598	LYS	2.3
1	B	654	TYR	2.2

Continued on next page...

Continued from previous page...

Mol	Chain	Res	Type	RSRZ
1	A	647	ASP	2.2
1	B	710	PHE	2.1
1	B	503	ASP	2.1
1	A	765	GLU	2.1
1	B	629	VAL	2.0

6.2 Non-standard residues in protein, DNA, RNA chains [i](#)

There are no non-standard protein/DNA/RNA residues in this entry.

6.3 Carbohydrates [i](#)

There are no carbohydrates in this entry.

6.4 Ligands [i](#)

In the following table, the Atoms column lists the number of modelled atoms in the group and the number defined in the chemical component dictionary. LLDF column lists the quality of electron density of the group with respect to its neighbouring residues in protein, DNA or RNA chains. The B-factors column lists the minimum, median, 95th percentile and maximum values of B factors of atoms in the group. The column labelled 'Q < 0.9' lists the number of atoms with occupancy less than 0.9.

Mol	Type	Chain	Res	Atoms	RSCC	RSR	LLDF	B-factors(Å ²)	Q<0.9
2	4UT	A	801	34/34	0.92	0.12	0.51	27,34,54,62	0
2	4UT	B	801	34/34	0.91	0.14	0.35	29,35,58,59	0

6.5 Other polymers [i](#)

There are no such residues in this entry.