



Full wwPDB X-ray Structure Validation Report ⓘ

Feb 1, 2016 – 12:08 AM GMT

PDB ID : 1ZT4
Title : The crystal structure of human CD1d with and without alpha-Galactosylceramide
Authors : Koch, M.; Stronge, V.S.; Shepherd, D.; Gadola, S.D.; Mathew, B.; Ritter, G.; Fersht, A.R.; Besra, G.S.; Schmidt, R.R.; Jones, E.Y.; Cerundolo, V.; Structural Proteomics in Europe (SPINE)
Deposited on : 2005-05-26
Resolution : 3.00 Å(reported)

This is a Full wwPDB X-ray Structure Validation Report for a publicly released PDB entry.
We welcome your comments at validation@mail.wwpdb.org
A user guide is available at
<http://wwpdb.org/validation/2016/XrayValidationReportHelp>
with specific help available everywhere you see the ⓘ symbol.

The following versions of software and data (see [references ⓘ](#)) were used in the production of this report:

MolProbity : 4.02b-467
Mogul : 1.7 (RC4), CSD as536be (2015)
Xtriage (Phenix) : 1.9-1692
EDS : rb-20026688
Percentile statistics : 20151230.v01 (using entries in the PDB archive December 30th 2015)
Refmac : 5.8.0135
CCP4 : 6.5.0
Ideal geometry (proteins) : Engh & Huber (2001)
Ideal geometry (DNA, RNA) : Parkinson et al. (1996)
Validation Pipeline (wwPDB-VP) : trunk26865

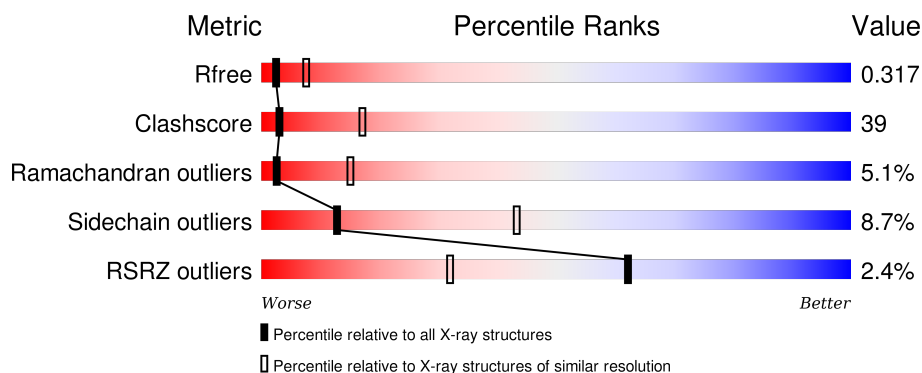
1 Overall quality at a glance ⓘ

The following experimental techniques were used to determine the structure:

X-RAY DIFFRACTION

The reported resolution of this entry is 3.00 Å.

Percentile scores (ranging between 0-100) for global validation metrics of the entry are shown in the following graphic. The table shows the number of entries on which the scores are based.



Metric	Whole archive (#Entries)	Similar resolution (#Entries, resolution range(Å))
R_{free}	91344	1578 (3.00-3.00)
Clashscore	102246	1912 (3.00-3.00)
Ramachandran outliers	100387	1853 (3.00-3.00)
Sidechain outliers	100360	1856 (3.00-3.00)
RSRZ outliers	91569	1592 (3.00-3.00)

The table below summarises the geometric issues observed across the polymeric chains and their fit to the electron density. The red, orange, yellow and green segments on the lower bar indicate the fraction of residues that contain outliers for ≥ 3 , 2, 1 and 0 types of geometric quality criteria. A grey segment represents the fraction of residues that are not modelled. The numeric value for each fraction is indicated below the corresponding segment, with a dot representing fractions $\leq 5\%$. The upper red bar (where present) indicates the fraction of residues that have poor fit to the electron density. The numeric value is given above the bar.

Mol	Chain	Length	Quality of chain
1	A	281	<div> <div>2%</div> <div>41%</div> <div>44%</div> <div>9%</div> <div>• •</div> </div>
1	C	281	<div> <div>3%</div> <div>51%</div> <div>40%</div> <div>7%</div> <div>• •</div> </div>
2	B	100	<div> <div>2%</div> <div>57%</div> <div>38%</div> <div>• •</div> </div>
2	D	100	<div> <div>2%</div> <div>43%</div> <div>48%</div> <div>8%</div> <div>•</div> </div>

2 Entry composition

There are 4 unique types of molecules in this entry. The entry contains 6093 atoms, of which 0 are hydrogens and 0 are deuteriums.

In the tables below, the ZeroOcc column contains the number of atoms modelled with zero occupancy, the AltConf column contains the number of residues with at least one atom in alternate conformation and the Trace column contains the number of residues modelled with at most 2 atoms.

- Molecule 1 is a protein called T-cell surface glycoprotein CD1d.

Mol	Chain	Residues	Atoms					ZeroOcc	AltConf	Trace
1	A	272	Total	C	N	O	S	0	0	0
			2161	1383	373	398	7			
1	C	278	Total	C	N	O	S	0	0	0
			2196	1403	380	406	7			

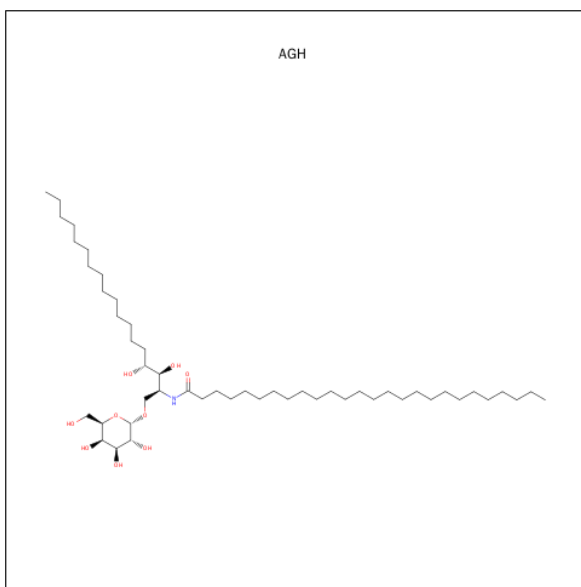
- Molecule 2 is a protein called Beta-2-microglobulin.

Mol	Chain	Residues	Atoms					ZeroOcc	AltConf	Trace
2	B	100	Total	C	N	O	S	0	0	0
			829	528	140	158	3			
2	D	100	Total	C	N	O	S	0	0	0
			829	528	140	158	3			

There are 2 discrepancies between the modelled and reference sequences:

Chain	Residue	Modelled	Actual	Comment	Reference
B	0	MET	-	INITIATING METHIONINE	UNP P61769
D	0	MET	-	INITIATING METHIONINE	UNP P61769

- Molecule 3 is SUGAR (N-{(1S,2R,3S)-1-[(ALPHA-D-GALACTOPYRANOSYLOXY)METHYL]-2,3-DIHYDROXYHEPTADECYL}HEXACOSANAMIDE) (three-letter code: AGH) (formula: C₅₀H₉₉NO₉).



Mol	Chain	Residues	Atoms				ZeroOcc	AltConf
3	A	1	Total	C	N	O	0	0
			60	50	1	9		

- Molecule 4 is water.

Mol	Chain	Residues	Atoms		ZeroOcc	AltConf
4	A	3	Total	O	0	0
			3	3		
4	B	4	Total	O	0	0
			4	4		
4	C	9	Total	O	0	0
			9	9		
4	D	2	Total	O	0	0
			2	2		

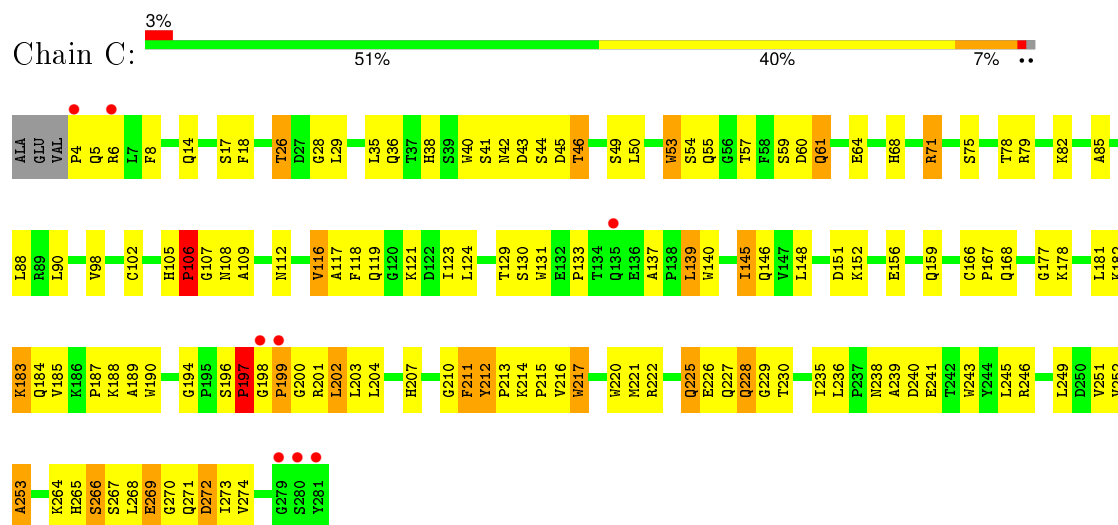
3 Residue-property plots

These plots are drawn for all protein, RNA and DNA chains in the entry. The first graphic for a chain summarises the proportions of errors displayed in the second graphic. The second graphic shows the sequence view annotated by issues in geometry and electron density. Residues are color-coded according to the number of geometric quality criteria for which they contain at least one outlier: green = 0, yellow = 1, orange = 2 and red = 3 or more. A red dot above a residue indicates a poor fit to the electron density ($RSRZ > 2$). Stretches of 2 or more consecutive residues without any outlier are shown as a green connector. Residues present in the sample, but not in the model, are shown in grey.

• Molecule 1: T-cell surface glycoprotein CD1d



• Molecule 1: T-cell surface glycoprotein CD1d

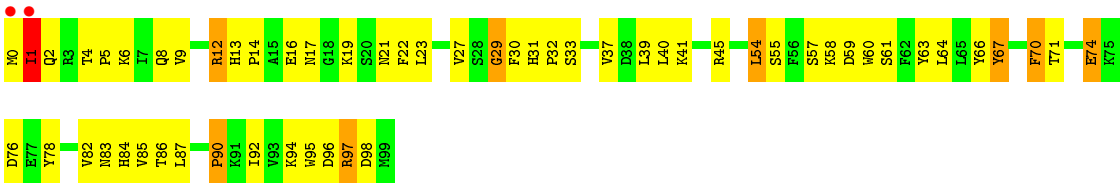


• Molecule 2: Beta-2-microglobulin





• Molecule 2: Beta-2-microglobulin



4 Data and refinement statistics

Property	Value	Source
Space group	P 21 21 21	Depositor
Cell constants a, b, c, α , β , γ	50.47Å 94.30Å 176.07Å 90.00° 90.00° 90.00°	Depositor
Resolution (Å)	30.00 – 3.00 19.94 – 3.00	Depositor EDS
% Data completeness (in resolution range)	99.5 (30.00-3.00) 99.8 (19.94-3.00)	Depositor EDS
R_{merge}	0.18	Depositor
R_{sym}	0.18	Depositor
$\langle I/\sigma(I) \rangle$ ¹	4.09 (at 2.98Å)	Xtriage
Refinement program	CNS 1.1	Depositor
R, R_{free}	0.234 , 0.326 0.229 , 0.317	Depositor DCC
R_{free} test set	867 reflections (4.97%)	DCC
Wilson B-factor (Å ²)	44.8	Xtriage
Anisotropy	0.061	Xtriage
Bulk solvent k_{sol} (e/Å ³), B_{sol} (Å ²)	0.33 , 62.7	EDS
Estimated twinning fraction	No twinning to report.	Xtriage
L-test for twinning ²	$\langle L \rangle = 0.47$, $\langle L^2 \rangle = 0.30$	Xtriage
Outliers	0 of 17432 reflections	Xtriage
F_o, F_c correlation	0.90	EDS
Total number of atoms	6093	wwPDB-VP
Average B, all atoms (Å ²)	32.0	wwPDB-VP

Xtriage's analysis on translational NCS is as follows: *The largest off-origin peak in the Patterson function is 5.29% of the height of the origin peak. No significant pseudotranslation is detected.*

¹Intensities estimated from amplitudes.

²Theoretical values of $\langle |L| \rangle$, $\langle L^2 \rangle$ for acentric reflections are 0.5, 0.375 respectively for untwinned datasets, and 0.333, 0.2 for perfectly twinned datasets.

5 Model quality [i](#)

5.1 Standard geometry [i](#)

Bond lengths and bond angles in the following residue types are not validated in this section: AGH

The Z score for a bond length (or angle) is the number of standard deviations the observed value is removed from the expected value. A bond length (or angle) with $|Z| > 5$ is considered an outlier worth inspection. RMSZ is the root-mean-square of all Z scores of the bond lengths (or angles).

Mol	Chain	Bond lengths		Bond angles	
		RMSZ	# $ Z > 5$	RMSZ	# $ Z > 5$
1	A	0.50	0/2226	0.79	4/3036 (0.1%)
1	C	0.53	0/2262	0.73	0/3084
2	B	0.45	0/852	0.68	1/1155 (0.1%)
2	D	0.45	0/852	0.67	0/1155
All	All	0.50	0/6192	0.74	5/8430 (0.1%)

There are no bond length outliers.

All (5) bond angle outliers are listed below:

Mol	Chain	Res	Type	Atoms	Z	Observed(°)	Ideal(°)
1	A	136	GLU	N-CA-C	-7.43	90.93	111.00
1	A	92	TYR	N-CA-C	6.88	129.57	111.00
1	A	137	ALA	N-CA-C	-6.77	92.71	111.00
1	A	92	TYR	C-N-CD	6.70	142.47	128.40
2	B	54	LEU	CA-CB-CG	5.80	128.63	115.30

There are no chirality outliers.

There are no planarity outliers.

5.2 Too-close contacts [i](#)

In the following table, the Non-H and H(model) columns list the number of non-hydrogen atoms and hydrogen atoms in the chain respectively. The H(added) column lists the number of hydrogen atoms added and optimized by MolProbity. The Clashes column lists the number of clashes within the asymmetric unit, whereas Symm-Clashes lists symmetry related clashes.

Mol	Chain	Non-H	H(model)	H(added)	Clashes	Symm-Clashes
1	A	2161	0	2070	204	0
1	C	2196	0	2099	180	0

Continued on next page...

Continued from previous page...

Mol	Chain	Non-H	H(model)	H(added)	Clashes	Symm-Clashes
2	B	829	0	785	47	0
2	D	829	0	785	62	0
3	A	60	0	99	14	0
4	A	3	0	0	0	0
4	B	4	0	0	0	0
4	C	9	0	0	0	0
4	D	2	0	0	0	0
All	All	6093	0	5838	459	0

The all-atom clashscore is defined as the number of clashes found per 1000 atoms (including hydrogen atoms). The all-atom clashscore for this structure is 39.

All (459) close contacts within the same asymmetric unit are listed below, sorted by their clash magnitude.

Atom-1	Atom-2	Interatomic distance (Å)	Clash overlap (Å)
1:C:68:HIS:HA	1:C:71:ARG:NH1	1.63	1.13
1:C:196:SER:H	1:C:202:LEU:HD13	1.13	1.09
1:A:236:LEU:HD21	2:B:8:GLN:HE21	1.26	1.01
1:A:262:ARG:HD2	1:A:274:VAL:HG22	1.43	1.00
1:A:211:PHE:CE1	1:A:243:TRP:HB2	1.97	0.99
1:A:236:LEU:HD21	2:B:8:GLN:NE2	1.78	0.97
1:C:236:LEU:HD21	2:D:8:GLN:NE2	1.78	0.97
1:A:198:GLY:H	1:A:199:PRO:HD2	1.30	0.96
1:C:220:TRP:H	1:C:230:THR:HG21	1.27	0.95
1:A:221:MET:SD	1:A:262:ARG:HG3	2.04	0.95
1:C:28:GLY:HA3	1:C:40:TRP:CE2	2.01	0.95
1:C:196:SER:HB3	1:C:202:LEU:HA	1.48	0.95
1:C:211:PHE:CE1	1:C:243:TRP:HB2	2.02	0.93
1:C:211:PHE:HE1	1:C:243:TRP:HB2	1.34	0.88
1:A:18:PHE:HB2	1:A:94:LEU:HB2	1.56	0.88
1:C:196:SER:N	1:C:202:LEU:HD13	1.90	0.87
1:A:211:PHE:HE1	1:A:243:TRP:HB2	1.34	0.86
1:A:72:VAL:HG22	1:C:105:HIS:CD2	2.10	0.86
1:C:196:SER:H	1:C:202:LEU:CD1	1.89	0.86
1:A:196:SER:HB3	1:A:202:LEU:HD23	1.57	0.86
1:A:251:VAL:HG12	1:A:252:VAL:H	1.41	0.85
2:D:84:HIS:H	2:D:87:LEU:HD11	1.41	0.85
1:A:220:TRP:HB3	1:A:249:LEU:HD22	1.58	0.84
1:C:8:PHE:HE2	1:C:181:LEU:HD22	1.43	0.83
1:C:196:SER:CB	1:C:202:LEU:HA	2.08	0.83
1:C:204:LEU:HB3	1:C:220:TRP:CH2	2.14	0.82

Continued on next page...

Continued from previous page...

Atom-1	Atom-2	Interatomic distance (Å)	Clash overlap (Å)
2:D:1:ILE:HG22	2:D:85:VAL:HG11	1.61	0.82
1:C:85:ALA:HA	1:C:90:LEU:HD12	1.62	0.82
1:C:129:THR:HG22	1:C:159:GLN:NE2	1.95	0.82
1:C:166:CYS:HB3	1:C:167:PRO:HD3	1.61	0.81
1:A:251:VAL:HG12	1:A:252:VAL:N	1.92	0.81
1:C:201:ARG:CB	1:C:252:VAL:HA	2.11	0.80
1:C:220:TRP:HB2	1:C:230:THR:HG22	1.61	0.80
1:A:154:THR:HG23	3:A:282:AGH:HAB2	1.65	0.79
1:C:212:TYR:HB3	1:C:213:PRO:HD3	1.62	0.79
2:B:54:LEU:HD13	2:B:54:LEU:O	1.84	0.78
1:A:212:TYR:HB3	1:A:213:PRO:HD3	1.65	0.78
1:A:92:TYR:HD2	1:A:92:TYR:O	1.67	0.78
1:A:269:GLU:HA	1:A:269:GLU:OE1	1.84	0.78
1:A:166:CYS:HB3	1:A:167:PRO:HD3	1.65	0.78
1:A:199:PRO:HB2	1:A:201:ARG:HG2	1.65	0.77
1:A:118:PHE:HB2	1:A:123:ILE:HD13	1.65	0.77
1:C:249:LEU:HG	1:C:251:VAL:HG13	1.67	0.76
1:A:199:PRO:HG2	1:A:201:ARG:O	1.85	0.76
1:C:236:LEU:HD21	2:D:8:GLN:HE21	1.50	0.75
2:D:6:LYS:HE2	2:D:8:GLN:OE1	1.86	0.75
1:C:201:ARG:HB2	1:C:252:VAL:HA	1.69	0.75
1:C:196:SER:HB3	1:C:202:LEU:HD22	1.68	0.75
1:A:8:PHE:HE2	1:A:181:LEU:HB3	1.51	0.75
1:A:198:GLY:H	1:A:199:PRO:CD	2.00	0.74
2:B:6:LYS:HE2	2:B:8:GLN:OE1	1.88	0.74
1:C:210:GLY:CA	2:D:12:ARG:NH2	2.52	0.73
1:C:203:LEU:HD12	1:C:203:LEU:O	1.88	0.73
1:C:8:PHE:CE2	1:C:181:LEU:HD22	2.24	0.73
1:C:210:GLY:HA3	2:D:12:ARG:HH22	1.54	0.71
1:A:217:TRP:HB3	1:A:264:LYS:HB2	1.71	0.71
1:C:68:HIS:HA	1:C:71:ARG:HH11	1.52	0.71
1:C:29:LEU:HD23	1:C:29:LEU:N	2.05	0.71
1:A:196:SER:CB	1:A:202:LEU:HD23	2.22	0.70
1:C:210:GLY:HA3	2:D:12:ARG:NH2	2.06	0.70
1:A:26:THR:O	1:A:42:ASN:HB3	1.92	0.70
1:C:68:HIS:CG	1:C:71:ARG:HH12	2.08	0.70
1:A:223:GLY:H	1:A:227:GLN:HG3	1.57	0.70
2:B:1:ILE:O	2:B:1:ILE:HD12	1.92	0.69
2:D:92:ILE:HD11	2:D:94:LYS:NZ	2.08	0.69
1:A:201:ARG:HH11	1:A:252:VAL:HG12	1.56	0.69
1:A:130:SER:HB3	1:A:155:ARG:NH1	2.07	0.68

Continued on next page...

Continued from previous page...

Atom-1	Atom-2	Interatomic distance (Å)	Clash overlap (Å)
1:C:139:LEU:C	1:C:139:LEU:HD12	2.14	0.68
1:C:220:TRP:HB2	1:C:230:THR:CG2	2.23	0.68
2:B:92:ILE:HD11	2:B:94:LYS:NZ	2.09	0.68
1:A:211:PHE:H	1:A:211:PHE:HD1	1.42	0.68
1:C:41:SER:OG	1:C:43:ASP:OD1	2.08	0.68
1:A:187:PRO:HB3	1:A:211:PHE:HB3	1.76	0.67
1:A:92:TYR:CD2	1:A:92:TYR:O	2.48	0.67
2:B:0:MET:HG2	2:B:2:GLN:HG3	1.77	0.67
1:C:118:PHE:HB2	1:C:123:ILE:HD13	1.76	0.67
1:C:28:GLY:HA3	1:C:40:TRP:CZ2	2.30	0.66
1:C:190:TRP:CE3	2:D:14:PRO:HG3	2.31	0.66
1:A:251:VAL:CG1	1:A:252:VAL:H	2.09	0.66
1:A:45:ASP:HB3	1:C:106:PRO:HG2	1.78	0.66
1:A:103:GLU:HG2	1:A:111:ASN:OD1	1.95	0.66
1:C:139:LEU:O	1:C:139:LEU:HD12	1.96	0.66
1:A:264:LYS:HG2	1:A:272:ASP:OD1	1.96	0.66
1:C:271:GLN:HG2	1:C:272:ASP:H	1.59	0.65
1:C:201:ARG:HB3	1:C:252:VAL:HA	1.77	0.65
1:C:217:TRP:NE1	1:C:264:LYS:NZ	2.45	0.65
2:B:84:HIS:H	2:B:87:LEU:HD11	1.60	0.64
1:C:129:THR:HG22	1:C:159:GLN:HE22	1.62	0.64
1:C:184:GLN:HE22	1:C:266:SER:HB2	1.63	0.64
1:C:133:PRO:HD3	1:C:145:ILE:HD13	1.78	0.64
2:D:92:ILE:HD11	2:D:94:LYS:HZ1	1.63	0.64
1:A:19:ALA:HB3	1:A:23:TRP:HB3	1.80	0.63
1:A:80:ASP:OD2	3:A:282:AGH:H6	1.99	0.63
1:C:194:GLY:O	1:C:202:LEU:HD12	1.99	0.63
2:D:84:HIS:H	2:D:87:LEU:CD1	2.11	0.63
1:C:268:LEU:HD23	1:C:272:ASP:HA	1.81	0.63
1:C:212:TYR:O	1:C:214:LYS:N	2.32	0.63
1:C:26:THR:O	1:C:42:ASN:HB3	1.99	0.63
1:A:16:SER:OG	1:A:26:THR:HB	1.98	0.62
2:D:9:VAL:HG11	2:D:95:TRP:HB2	1.81	0.62
1:C:78:THR:O	1:C:82:LYS:HG2	2.00	0.62
1:A:169:PHE:CE2	3:A:282:AGH:HAT2	2.34	0.62
1:A:201:ARG:HB2	1:A:251:VAL:O	2.00	0.62
1:A:71:ARG:HD2	1:C:106:PRO:HD2	1.82	0.62
1:A:29:LEU:HD23	1:A:29:LEU:N	2.14	0.62
1:C:212:TYR:O	1:C:213:PRO:C	2.37	0.62
1:C:211:PHE:H	1:C:211:PHE:HD1	1.46	0.62
1:C:213:PRO:C	1:C:215:PRO:HD2	2.19	0.62

Continued on next page...

Continued from previous page...

Atom-1	Atom-2	Interatomic distance (Å)	Clash overlap (Å)
1:C:196:SER:HB3	1:C:202:LEU:HD13	1.82	0.61
1:C:221:MET:HE1	1:C:226:GLU:HG3	1.82	0.61
1:C:227:GLN:O	1:C:229:GLY:N	2.30	0.61
2:D:64:LEU:HD13	2:D:66:TYR:CE1	2.35	0.61
1:C:225:GLN:HG3	1:C:227:GLN:HE22	1.66	0.61
1:A:217:TRP:CE3	1:A:264:LYS:HG3	2.35	0.61
2:B:9:VAL:HG11	2:B:95:TRP:HB2	1.81	0.61
1:A:157:THR:O	1:A:161:LEU:HG	2.01	0.61
2:B:1:ILE:HD13	1:C:228:GLN:CB	2.31	0.61
1:C:201:ARG:O	1:C:201:ARG:HG3	2.01	0.61
1:A:130:SER:HB2	1:A:149:ASN:OD1	2.01	0.61
1:C:194:GLY:HA3	1:C:203:LEU:HD11	1.83	0.60
1:A:201:ARG:HD2	1:A:251:VAL:O	2.01	0.60
1:A:154:THR:HG21	3:A:282:AGH:H52	1.82	0.60
1:C:78:THR:O	1:C:82:LYS:CG	2.49	0.60
1:C:227:GLN:C	1:C:229:GLY:H	2.05	0.59
1:C:75:SER:O	1:C:79:ARG:HG3	2.02	0.59
1:A:196:SER:HB3	1:A:202:LEU:HA	1.84	0.59
1:C:240:ASP:O	1:C:241:GLU:HB2	2.02	0.59
1:A:211:PHE:HE1	1:A:243:TRP:CB	2.13	0.59
1:C:28:GLY:HA3	1:C:40:TRP:CD2	2.38	0.59
1:A:60:ASP:OD2	1:A:60:ASP:N	2.32	0.59
1:C:187:PRO:HB3	1:C:211:PHE:HB3	1.84	0.59
1:C:221:MET:HE2	1:C:226:GLU:HA	1.85	0.59
1:A:116:VAL:HG22	1:A:124:LEU:HG	1.85	0.59
1:C:57:THR:HG22	1:C:57:THR:O	2.02	0.59
1:C:68:HIS:CA	1:C:71:ARG:NH1	2.54	0.58
1:C:217:TRP:CD1	1:C:264:LYS:NZ	2.64	0.58
1:A:211:PHE:CD1	1:A:211:PHE:N	2.67	0.58
1:C:235:ILE:N	1:C:235:ILE:HD12	2.18	0.58
1:A:42:ASN:HB2	1:C:4:PRO:CG	2.34	0.58
1:C:118:PHE:CE2	1:C:119:GLN:HG2	2.39	0.58
2:B:13:HIS:HB2	2:B:21:ASN:ND2	2.18	0.58
2:D:13:HIS:HB2	2:D:21:ASN:ND2	2.18	0.58
1:A:223:GLY:N	1:A:227:GLN:HG3	2.19	0.57
1:C:129:THR:HG22	1:C:159:GLN:CD	2.24	0.57
1:A:73:TYR:CD1	3:A:282:AGH:HAD2	2.39	0.57
1:C:213:PRO:HD2	1:C:265:HIS:CE1	2.39	0.57
2:B:16:GLU:HB3	2:B:19:LYS:HB3	1.86	0.57
1:A:199:PRO:C	1:A:201:ARG:H	2.07	0.57
1:A:240:ASP:OD1	2:B:12:ARG:NH1	2.38	0.57

Continued on next page...

Continued from previous page...

Atom-1	Atom-2	Interatomic distance (Å)	Clash overlap (Å)
1:A:75:SER:O	1:A:79:ARG:HG3	2.05	0.57
1:A:245:LEU:HD12	1:A:246:ARG:H	1.69	0.57
1:C:220:TRP:N	1:C:230:THR:HG21	2.09	0.57
2:B:17:ASN:OD1	2:B:74:GLU:HG3	2.05	0.57
1:A:212:TYR:O	1:A:214:LYS:N	2.38	0.57
1:A:57:THR:O	1:A:57:THR:HG22	2.04	0.57
2:D:64:LEU:HD13	2:D:66:TYR:HE1	1.68	0.57
2:D:1:ILE:CG2	2:D:85:VAL:HG11	2.32	0.57
1:A:212:TYR:O	1:A:213:PRO:C	2.43	0.56
1:A:118:PHE:CD2	1:A:119:GLN:HG2	2.40	0.56
1:C:152:LYS:O	1:C:156:GLU:HG3	2.04	0.56
1:C:204:LEU:N	1:C:204:LEU:HD12	2.20	0.56
1:A:12:CYS:HB3	3:A:282:AGH:HAM2	1.87	0.56
1:A:221:MET:CG	1:A:262:ARG:HG3	2.35	0.56
1:A:220:TRP:CB	1:A:249:LEU:HD22	2.33	0.56
1:A:222:ARG:CB	1:A:259:LEU:HD22	2.34	0.56
1:A:12:CYS:HB3	3:A:282:AGH:CAM	2.36	0.56
2:D:13:HIS:C	2:D:21:ASN:HD21	2.09	0.56
1:C:213:PRO:HD2	1:C:265:HIS:HE1	1.71	0.56
1:C:198:GLY:HA3	1:C:201:ARG:NH2	2.21	0.56
2:D:16:GLU:HG2	2:D:19:LYS:HE3	1.88	0.55
1:C:212:TYR:HB3	1:C:213:PRO:CD	2.36	0.55
1:C:118:PHE:CD2	1:C:119:GLN:HG2	2.41	0.55
1:A:133:PRO:HD3	1:A:145:ILE:HD13	1.88	0.55
1:C:196:SER:HB3	1:C:202:LEU:CA	2.29	0.55
1:C:201:ARG:HB2	1:C:251:VAL:O	2.05	0.55
2:D:27:VAL:HG21	2:D:37:VAL:HG21	1.87	0.55
1:C:116:VAL:HG22	1:C:124:LEU:HG	1.89	0.55
1:C:211:PHE:N	1:C:211:PHE:CD1	2.68	0.55
1:A:118:PHE:CE2	1:A:119:GLN:HG2	2.42	0.55
1:C:196:SER:OG	1:C:197:PRO:HD2	2.07	0.55
1:C:5:GLN:C	1:C:6:ARG:HD2	2.28	0.54
2:D:74:GLU:OE1	2:D:74:GLU:HA	2.06	0.54
1:A:201:ARG:HD2	1:A:251:VAL:C	2.27	0.54
2:D:84:HIS:CE1	2:D:86:THR:HG23	2.42	0.54
1:A:262:ARG:HH11	1:A:274:VAL:HG21	1.73	0.54
1:C:200:GLY:O	1:C:253:ALA:HB3	2.08	0.54
1:A:222:ARG:CB	1:A:259:LEU:HA	2.38	0.54
1:C:236:LEU:H	1:C:236:LEU:HD12	1.73	0.54
1:C:196:SER:CB	1:C:202:LEU:HD13	2.38	0.54
1:A:164:GLY:O	1:A:167:PRO:HD2	2.08	0.54

Continued on next page...

Continued from previous page...

Atom-1	Atom-2	Interatomic distance (Å)	Clash overlap (Å)
1:A:217:TRP:HE3	1:A:264:LYS:HG3	1.71	0.53
1:A:204:LEU:HD22	1:A:259:LEU:HD12	1.91	0.53
1:C:35:LEU:HD11	1:C:212:TYR:OH	2.08	0.53
2:D:21:ASN:HB3	2:D:70:PHE:CE1	2.43	0.53
1:C:217:TRP:C	1:C:217:TRP:CD1	2.81	0.53
1:A:240:ASP:O	1:A:241:GLU:HB2	2.08	0.53
1:A:70:PHE:O	1:A:71:ARG:C	2.47	0.53
2:B:16:GLU:HG2	2:B:19:LYS:HE3	1.91	0.53
2:D:84:HIS:N	2:D:87:LEU:HD11	2.19	0.53
1:C:214:LYS:N	1:C:215:PRO:HD2	2.23	0.53
1:A:235:ILE:N	1:A:235:ILE:HD12	2.24	0.53
1:A:236:LEU:HD22	2:B:10:TYR:CE2	2.44	0.53
1:A:118:PHE:CB	1:A:123:ILE:HD13	2.36	0.53
1:A:194:GLY:HA3	1:A:203:LEU:HD11	1.90	0.53
1:A:262:ARG:CD	1:A:274:VAL:HG22	2.27	0.53
2:B:12:ARG:HB3	2:B:22:PHE:HB2	1.91	0.53
1:C:245:LEU:HD12	1:C:246:ARG:H	1.73	0.52
1:C:271:GLN:CG	1:C:272:ASP:H	2.21	0.52
2:B:40:LEU:HD23	2:B:45:ARG:HA	1.91	0.52
1:A:36:GLN:HG2	1:A:50:LEU:HD12	1.92	0.52
1:A:36:GLN:NE2	2:B:53:ASP:OD2	2.29	0.52
1:A:264:LYS:HE3	1:A:272:ASP:OD2	2.09	0.52
1:A:88:LEU:O	1:A:89:ARG:HG3	2.09	0.52
1:A:204:LEU:N	1:A:204:LEU:HD12	2.25	0.52
2:D:41:LYS:HE3	2:D:78:TYR:OH	2.10	0.52
2:D:17:ASN:OD1	2:D:74:GLU:HG2	2.10	0.52
1:C:199:PRO:HD2	1:C:201:ARG:NE	2.25	0.52
1:A:23:TRP:CE3	1:C:216:VAL:C	2.83	0.52
1:A:42:ASN:HB2	1:C:4:PRO:HG3	1.91	0.51
1:A:124:LEU:HD12	1:A:125:SER:N	2.25	0.51
1:C:235:ILE:CD1	1:C:235:ILE:N	2.73	0.51
1:A:265:HIS:CE1	1:A:267:SER:H	2.27	0.51
1:A:214:LYS:N	1:A:215:PRO:HD2	2.25	0.51
1:C:211:PHE:HE2	1:C:216:VAL:HG11	1.75	0.51
1:A:71:ARG:HG3	1:A:71:ARG:HH11	1.76	0.51
1:A:9:PRO:HB3	1:A:103:GLU:HB3	1.93	0.51
1:C:151:ASP:OD2	1:C:151:ASP:C	2.48	0.51
2:D:13:HIS:CB	2:D:21:ASN:ND2	2.74	0.51
2:D:37:VAL:HG22	2:D:82:VAL:HG13	1.93	0.51
1:A:126:PHE:HB2	1:A:131:TRP:CZ3	2.45	0.51
2:D:21:ASN:OD1	2:D:22:PHE:N	2.43	0.51

Continued on next page...

Continued from previous page...

Atom-1	Atom-2	Interatomic distance (Å)	Clash overlap (Å)
1:A:213:PRO:C	1:A:215:PRO:HD2	2.31	0.51
1:C:53:TRP:N	1:C:53:TRP:CD1	2.79	0.51
1:A:251:VAL:CG1	1:A:252:VAL:N	2.62	0.50
1:C:201:ARG:HA	1:C:253:ALA:H	1.76	0.50
1:C:238:ASN:O	1:C:240:ASP:N	2.44	0.50
1:A:65:THR:O	1:A:69:ILE:HG13	2.12	0.50
1:A:68:HIS:CE1	1:C:109:ALA:HB3	2.47	0.50
1:A:38:HIS:NE2	1:A:54:SER:O	2.39	0.50
2:B:21:ASN:OD1	2:B:22:PHE:N	2.40	0.50
1:C:203:LEU:HA	1:C:249:LEU:O	2.12	0.50
1:C:220:TRP:O	1:C:227:GLN:OE1	2.30	0.50
1:A:151:ASP:O	1:A:155:ARG:HB2	2.12	0.50
2:B:84:HIS:CE1	2:B:86:THR:HG23	2.47	0.50
1:A:212:TYR:HB3	1:A:213:PRO:CD	2.39	0.50
2:D:16:GLU:HB3	2:D:19:LYS:HB3	1.94	0.50
1:A:199:PRO:CB	1:A:201:ARG:HG2	2.41	0.49
1:A:71:ARG:HG3	1:A:71:ARG:NH1	2.26	0.49
2:D:12:ARG:HB2	2:D:22:PHE:HB2	1.94	0.49
1:C:220:TRP:H	1:C:230:THR:CG2	2.12	0.49
2:D:41:LYS:HG3	2:D:78:TYR:CE2	2.46	0.49
2:B:58:LYS:C	2:B:60:TRP:H	2.15	0.49
2:D:30:PHE:O	2:D:31:HIS:HB2	2.13	0.49
1:C:60:ASP:OD2	1:C:60:ASP:N	2.46	0.49
2:B:84:HIS:H	2:B:87:LEU:CD1	2.26	0.49
1:C:18:PHE:CD1	1:C:18:PHE:N	2.79	0.49
1:A:131:TRP:CD1	1:A:148:LEU:HB3	2.48	0.49
2:B:64:LEU:HD13	2:B:66:TYR:CE1	2.48	0.49
1:A:252:VAL:O	1:A:256:ALA:HB2	2.12	0.49
1:A:72:VAL:HG22	1:C:105:HIS:NE2	2.28	0.49
1:C:198:GLY:HA3	1:C:201:ARG:CZ	2.43	0.49
2:D:67:TYR:CD1	2:D:67:TYR:N	2.80	0.49
1:A:36:GLN:NE2	1:A:50:LEU:HD11	2.28	0.48
1:C:38:HIS:NE2	1:C:54:SER:O	2.43	0.48
1:C:178:LYS:HD2	1:C:182:LYS:NZ	2.28	0.48
2:B:92:ILE:HD11	2:B:94:LYS:HZ3	1.77	0.48
1:C:211:PHE:HD1	1:C:211:PHE:N	2.10	0.48
1:A:147:VAL:O	1:A:150:GLN:HB2	2.13	0.48
1:A:24:THR:CG2	1:A:25:ARG:N	2.76	0.48
1:A:142:ASN:O	1:A:146:GLN:CG	2.61	0.48
1:A:8:PHE:CD2	1:A:181:LEU:HD13	2.49	0.48
1:C:119:GLN:HA	1:C:119:GLN:OE1	2.13	0.48

Continued on next page...

Continued from previous page...

Atom-1	Atom-2	Interatomic distance (Å)	Clash overlap (Å)
1:C:271:GLN:HG2	1:C:272:ASP:N	2.28	0.48
1:A:264:LYS:HG2	1:A:272:ASP:CG	2.34	0.48
1:A:194:GLY:O	1:A:203:LEU:HG	2.14	0.48
1:C:14:GLN:HB3	1:C:98:VAL:HB	1.96	0.48
1:C:210:GLY:CA	2:D:12:ARG:HH22	2.17	0.47
1:C:190:TRP:CD2	2:D:14:PRO:HG3	2.49	0.47
1:C:238:ASN:C	1:C:240:ASP:H	2.18	0.47
1:A:137:ALA:O	1:A:138:PRO:C	2.51	0.47
1:C:211:PHE:HE1	1:C:243:TRP:CB	2.15	0.47
1:C:133:PRO:CD	1:C:145:ILE:HD13	2.42	0.47
1:A:223:GLY:H	1:A:227:GLN:CG	2.26	0.47
1:C:273:ILE:O	1:C:273:ILE:HG22	2.14	0.47
2:D:1:ILE:HG22	2:D:32:PRO:HD3	1.96	0.47
1:C:240:ASP:O	1:C:241:GLU:CB	2.62	0.47
1:C:177:GLY:O	1:C:178:LYS:C	2.53	0.47
1:C:105:HIS:HB3	1:C:106:PRO:HD2	1.96	0.47
2:B:67:TYR:N	2:B:67:TYR:CD1	2.83	0.47
1:C:196:SER:HB3	1:C:202:LEU:CD2	2.41	0.47
1:A:221:MET:HA	1:A:227:GLN:HB2	1.96	0.47
1:A:18:PHE:CZ	1:A:81:VAL:HG11	2.50	0.47
1:A:225:GLN:O	1:A:226:GLU:O	2.32	0.47
1:A:44:SER:OG	1:A:46:THR:HG23	2.15	0.47
1:A:59:SER:OG	1:A:61:GLN:HG3	2.14	0.47
1:C:28:GLY:C	1:C:29:LEU:HD23	2.34	0.47
1:A:18:PHE:CD1	1:A:18:PHE:N	2.83	0.47
1:A:220:TRP:O	1:A:222:ARG:N	2.48	0.47
1:C:268:LEU:O	1:C:269:GLU:C	2.54	0.47
1:A:42:ASN:HA	1:A:74:ARG:NH1	2.30	0.47
1:A:88:LEU:C	1:A:89:ARG:HG3	2.35	0.47
1:C:44:SER:OG	1:C:46:THR:HG23	2.15	0.47
1:C:29:LEU:N	1:C:29:LEU:CD2	2.78	0.47
1:A:129:THR:O	1:A:155:ARG:HG2	2.14	0.47
2:B:92:ILE:HD11	2:B:94:LYS:HZ1	1.77	0.47
2:D:57:SER:HB2	2:D:59:ASP:OD1	2.15	0.47
2:D:1:ILE:HG22	2:D:85:VAL:CG1	2.39	0.46
1:C:210:GLY:HA2	2:D:12:ARG:NH2	2.27	0.46
1:C:204:LEU:N	1:C:204:LEU:CD1	2.78	0.46
1:C:185:VAL:O	1:C:211:PHE:HA	2.16	0.46
1:A:235:ILE:CD1	1:A:235:ILE:N	2.78	0.46
1:A:73:TYR:CE1	3:A:282:AGH:HAG1	2.51	0.46
1:A:35:LEU:HD21	1:A:212:TYR:OH	2.16	0.46

Continued on next page...

Continued from previous page...

Atom-1	Atom-2	Interatomic distance (Å)	Clash overlap (Å)
2:B:83:ASN:ND2	2:B:90:PRO:HB3	2.31	0.46
1:A:92:TYR:CE2	1:A:94:LEU:HD12	2.51	0.46
1:A:142:ASN:O	1:A:146:GLN:HG2	2.15	0.46
1:C:201:ARG:HB2	1:C:252:VAL:CA	2.44	0.46
1:A:42:ASN:HB2	1:C:4:PRO:CD	2.46	0.46
2:B:13:HIS:CB	2:B:21:ASN:HD21	2.29	0.46
2:B:13:HIS:CB	2:B:21:ASN:ND2	2.78	0.46
1:A:119:GLN:HA	1:A:119:GLN:OE1	2.16	0.46
1:C:119:GLN:O	2:D:0:MET:N	2.41	0.46
1:C:212:TYR:CD2	1:C:213:PRO:N	2.85	0.45
1:A:238:ASN:O	1:A:240:ASP:N	2.49	0.45
1:C:68:HIS:HA	1:C:71:ARG:HH12	1.70	0.45
1:C:221:MET:C	1:C:227:GLN:OE1	2.55	0.45
2:B:21:ASN:HB3	2:B:70:PHE:CE1	2.52	0.45
1:A:35:LEU:HD12	1:A:181:LEU:HD23	1.98	0.45
1:C:190:TRP:CZ3	2:D:14:PRO:HG3	2.51	0.45
1:C:68:HIS:HA	1:C:71:ARG:HG3	1.97	0.45
1:C:221:MET:CE	1:C:226:GLU:HG3	2.46	0.45
1:C:227:GLN:C	1:C:229:GLY:N	2.68	0.45
1:A:24:THR:HG22	1:C:4:PRO:HB2	1.99	0.45
1:A:135:GLN:HB2	1:A:136:GLU:H	1.64	0.45
1:A:204:LEU:CD1	1:A:204:LEU:N	2.79	0.45
1:C:118:PHE:HB3	1:C:123:ILE:HG21	1.97	0.45
1:C:189:ALA:HA	1:C:207:HIS:O	2.17	0.45
1:A:204:LEU:CD2	1:A:259:LEU:HD12	2.46	0.45
1:A:15:ILE:HD12	2:B:54:LEU:HD13	1.99	0.45
1:C:184:GLN:OE1	1:C:267:SER:HA	2.15	0.45
1:C:182:LYS:O	1:C:183:LYS:C	2.55	0.45
2:B:37:VAL:HG22	2:B:82:VAL:HG13	1.97	0.45
2:D:1:ILE:CG2	2:D:32:PRO:HD3	2.47	0.45
2:D:13:HIS:CB	2:D:21:ASN:HD21	2.30	0.45
1:A:177:GLY:O	1:A:178:LYS:C	2.56	0.45
1:A:158:VAL:O	1:A:161:LEU:HB2	2.16	0.45
1:A:236:LEU:HB3	2:B:10:TYR:OH	2.17	0.45
1:A:221:MET:CE	1:A:262:ARG:HG3	2.47	0.45
2:D:13:HIS:CA	2:D:21:ASN:HD21	2.29	0.45
1:A:184:GLN:OE1	1:A:267:SER:HA	2.17	0.45
1:A:84:PHE:CE2	1:A:144:ALA:HA	2.52	0.45
1:A:59:SER:C	1:A:61:GLN:H	2.20	0.44
1:C:59:SER:OG	1:C:61:GLN:HG2	2.17	0.44
2:B:30:PHE:O	2:B:31:HIS:HB2	2.17	0.44

Continued on next page...

Continued from previous page...

Atom-1	Atom-2	Interatomic distance (Å)	Clash overlap (Å)
1:C:201:ARG:HG3	1:C:201:ARG:HH11	1.81	0.44
1:C:249:LEU:CG	1:C:251:VAL:HG13	2.44	0.44
1:C:167:PRO:O	1:C:168:GLN:C	2.54	0.44
1:A:142:ASN:O	1:A:145:ILE:HG22	2.18	0.44
1:A:53:TRP:N	1:A:53:TRP:CD1	2.86	0.44
1:A:58:PHE:CD1	1:A:58:PHE:N	2.84	0.44
2:D:4:THR:OG1	2:D:5:PRO:HD2	2.18	0.44
1:C:236:LEU:HD21	2:D:8:GLN:HE22	1.74	0.44
1:A:49:SER:HB3	1:A:54:SER:HB2	2.00	0.44
2:B:64:LEU:HD13	2:B:66:TYR:HE1	1.81	0.44
2:D:55:SER:HB3	2:D:63:TYR:CZ	2.52	0.44
1:A:255:GLU:C	1:A:257:ALA:H	2.20	0.44
2:B:54:LEU:HD13	2:B:54:LEU:C	2.38	0.44
2:B:29:GLY:HA2	2:B:61:SER:HB2	1.99	0.44
1:C:196:SER:CB	1:C:202:LEU:CA	2.90	0.44
1:A:238:ASN:C	1:A:240:ASP:H	2.20	0.44
1:C:102:CYS:HA	1:C:112:ASN:HA	2.00	0.44
1:C:131:TRP:CD1	1:C:148:LEU:HB3	2.53	0.44
2:B:83:ASN:HA	2:B:87:LEU:HD11	1.99	0.43
1:A:225:GLN:O	1:A:226:GLU:C	2.56	0.43
1:A:59:SER:C	1:A:61:GLN:N	2.71	0.43
1:A:127:GLN:HB2	1:A:132:GLU:HG2	2.00	0.43
2:D:96:ASP:O	2:D:98:ASP:N	2.52	0.43
1:A:227:GLN:HE21	1:A:227:GLN:HB3	1.60	0.43
2:B:57:SER:HB2	2:B:59:ASP:OD1	2.18	0.43
2:D:39:LEU:HD23	2:D:39:LEU:HA	1.73	0.43
1:C:225:GLN:HG3	1:C:227:GLN:NE2	2.30	0.43
1:A:212:TYR:CD2	1:A:213:PRO:N	2.86	0.43
1:C:118:PHE:CB	1:C:123:ILE:HD13	2.48	0.43
1:A:143:LEU:O	1:A:147:VAL:HG23	2.19	0.43
1:C:45:ASP:O	1:C:71:ARG:NE	2.49	0.43
1:A:199:PRO:C	1:A:201:ARG:N	2.71	0.43
1:A:74:ARG:O	1:A:78:THR:HG23	2.19	0.43
2:D:33:SER:HB2	2:D:54:LEU:HD11	2.00	0.43
1:A:236:LEU:HD12	1:A:236:LEU:H	1.82	0.43
1:C:139:LEU:CD1	1:C:139:LEU:C	2.87	0.43
2:D:83:ASN:HA	2:D:87:LEU:HD11	2.00	0.42
1:C:274:VAL:HG13	1:C:274:VAL:O	2.19	0.42
1:A:154:THR:O	1:A:158:VAL:HG23	2.19	0.42
1:A:59:SER:O	1:A:61:GLN:N	2.52	0.42
1:A:211:PHE:HD1	1:A:211:PHE:N	2.06	0.42

Continued on next page...

Continued from previous page...

Atom-1	Atom-2	Interatomic distance (Å)	Clash overlap (Å)
1:A:198:GLY:N	1:A:199:PRO:CD	2.72	0.42
3:A:282:AGH:H122	3:A:282:AGH:H91	1.80	0.42
1:A:134:THR:O	1:A:137:ALA:HB2	2.19	0.42
1:A:22:SER:HB3	1:C:235:ILE:HG12	2.00	0.42
1:C:222:ARG:N	1:C:227:GLN:OE1	2.53	0.42
1:A:23:TRP:HE3	1:C:216:VAL:N	2.16	0.42
1:A:66:LEU:O	1:A:67:GLN:C	2.58	0.42
1:A:196:SER:HB2	1:A:201:ARG:O	2.20	0.42
1:A:222:ARG:HA	1:A:260:SER:N	2.34	0.42
1:A:80:ASP:OD2	3:A:282:AGH:C4	2.67	0.42
1:A:251:VAL:HG12	1:A:252:VAL:O	2.20	0.42
1:C:236:LEU:HD12	1:C:236:LEU:N	2.35	0.42
1:A:245:LEU:HD12	1:A:246:ARG:N	2.33	0.42
1:A:133:PRO:CD	1:A:145:ILE:HD13	2.49	0.42
1:A:82:LYS:O	1:A:85:ALA:HB3	2.19	0.42
1:A:14:GLN:HB2	3:A:282:AGH:HAK2	2.02	0.42
1:C:49:SER:HB3	1:C:54:SER:HB2	2.00	0.42
1:C:88:LEU:HD22	1:C:140:TRP:HB2	2.01	0.42
1:A:73:TYR:CZ	3:A:282:AGH:HAG1	2.55	0.42
1:C:53:TRP:C	1:C:55:GLN:H	2.22	0.42
1:A:211:PHE:CE2	1:A:216:VAL:HG21	2.54	0.41
1:C:220:TRP:O	1:C:227:GLN:HB2	2.20	0.41
1:A:166:CYS:HB3	1:A:167:PRO:CD	2.42	0.41
1:A:63:TRP:CE3	1:A:63:TRP:HA	2.55	0.41
2:D:40:LEU:HD23	2:D:45:ARG:HA	2.01	0.41
1:A:77:PHE:O	1:A:81:VAL:HG23	2.20	0.41
1:A:8:PHE:CE2	1:A:181:LEU:HB3	2.41	0.41
1:A:15:ILE:HD12	2:B:54:LEU:CD1	2.49	0.41
1:A:127:GLN:HB2	1:A:132:GLU:CG	2.50	0.41
2:D:58:LYS:C	2:D:60:TRP:H	2.24	0.41
2:D:0:MET:CE	2:D:2:GLN:HB2	2.51	0.41
2:B:13:HIS:C	2:B:21:ASN:HD21	2.23	0.41
2:D:16:GLU:HG2	2:D:19:LYS:CE	2.50	0.41
1:A:58:PHE:HD1	1:A:58:PHE:N	2.18	0.41
1:A:255:GLU:C	1:A:257:ALA:N	2.73	0.41
1:A:211:PHE:HE2	1:A:216:VAL:CB	2.34	0.41
2:D:19:LYS:O	2:D:71:THR:HG23	2.20	0.41
1:C:36:GLN:HG2	1:C:50:LEU:HD12	2.02	0.41
2:D:23:LEU:O	2:D:67:TYR:HA	2.20	0.41
1:A:137:ALA:O	1:A:138:PRO:O	2.38	0.41
1:C:196:SER:HB2	1:C:203:LEU:N	2.36	0.41

Continued on next page...

Continued from previous page...

Atom-1	Atom-2	Interatomic distance (Å)	Clash overlap (Å)
1:A:45:ASP:O	1:A:71:ARG:NE	2.49	0.41
2:D:83:ASN:ND2	2:D:90:PRO:HB3	2.35	0.41
1:A:167:PRO:O	1:A:168:GLN:C	2.58	0.41
1:A:28:GLY:C	1:A:29:LEU:HD23	2.40	0.41
1:A:142:ASN:O	1:A:146:GLN:HG3	2.21	0.41
1:C:6:ARG:HD2	1:C:6:ARG:N	2.36	0.41
2:B:0:MET:CG	2:B:2:GLN:HG3	2.49	0.41
1:A:67:GLN:HB2	1:A:67:GLN:HE21	1.47	0.41
2:D:29:GLY:HA2	2:D:61:SER:HB2	2.03	0.41
2:B:84:HIS:HE1	2:B:86:THR:HG23	1.86	0.40
2:B:16:GLU:OE2	2:B:16:GLU:HA	2.21	0.40
2:D:16:GLU:OE2	2:D:16:GLU:HA	2.21	0.40
1:C:117:ALA:HB2	2:D:60:TRP:CE2	2.56	0.40
1:C:196:SER:OG	1:C:197:PRO:CD	2.69	0.40
1:A:169:PHE:CD2	3:A:282:AGH:HAT2	2.57	0.40
1:A:166:CYS:HA	3:A:282:AGH:HAW2	2.03	0.40
1:A:211:PHE:CE2	1:A:216:VAL:HB	2.57	0.40
1:A:25:ARG:HG3	1:A:25:ARG:HH11	1.87	0.40
1:A:40:TRP:CH2	1:A:74:ARG:HB2	2.56	0.40
1:A:236:LEU:HB3	2:B:10:TYR:CZ	2.57	0.40
1:C:264:LYS:HG2	1:C:272:ASP:OD1	2.21	0.40
2:B:87:LEU:HD12	2:B:87:LEU:O	2.22	0.40
1:A:271:GLN:NE2	1:A:273:ILE:HG12	2.36	0.40

There are no symmetry-related clashes.

5.3 Torsion angles [i](#)

5.3.1 Protein backbone [i](#)

In the following table, the Percentiles column shows the percent Ramachandran outliers of the chain as a percentile score with respect to all X-ray entries followed by that with respect to entries of similar resolution.

The Analysed column shows the number of residues for which the backbone conformation was analysed, and the total number of residues.

Mol	Chain	Analysed	Favoured	Allowed	Outliers	Percentiles	
1	A	270/281 (96%)	218 (81%)	36 (13%)	16 (6%)	2	11
1	C	276/281 (98%)	235 (85%)	26 (9%)	15 (5%)	2	14

Continued on next page...

Continued from previous page...

Mol	Chain	Analysed	Favoured	Allowed	Outliers	Percentiles	
2	B	98/100 (98%)	87 (89%)	9 (9%)	2 (2%)	9	41
2	D	98/100 (98%)	86 (88%)	7 (7%)	5 (5%)	2	15
All	All	742/762 (97%)	626 (84%)	78 (10%)	38 (5%)	2	15

All (38) Ramachandran outliers are listed below:

Mol	Chain	Res	Type
1	A	135	GLN
1	A	226	GLU
1	A	269	GLU
1	C	197	PRO
1	C	239	ALA
1	C	272	ASP
1	A	239	ALA
1	C	212	TYR
1	C	228	GLN
2	D	29	GLY
1	A	138	PRO
1	A	212	TYR
1	A	222	ARG
2	B	97	ARG
1	C	183	LYS
1	C	253	ALA
1	C	266	SER
2	D	74	GLU
2	D	97	ARG
1	A	89	ARG
1	A	106	PRO
1	A	108	ASN
1	A	198	GLY
1	A	266	SER
1	C	106	PRO
1	C	108	ASN
1	C	137	ALA
1	C	199	PRO
1	A	87	MET
1	A	91	SER
1	A	221	MET
2	B	1	ILE
1	C	269	GLU
2	D	1	ILE

Continued on next page...

Continued from previous page...

Mol	Chain	Res	Type
2	D	90	PRO
1	C	270	GLY
1	A	137	ALA
1	C	107	GLY

5.3.2 Protein sidechains ⓘ

In the following table, the Percentiles column shows the percent sidechain outliers of the chain as a percentile score with respect to all X-ray entries followed by that with respect to entries of similar resolution.

The Analysed column shows the number of residues for which the sidechain conformation was analysed, and the total number of residues.

Mol	Chain	Analysed	Rotameric	Outliers	Percentiles	
1	A	233/244 (96%)	208 (89%)	25 (11%)	8	31
1	C	236/244 (97%)	216 (92%)	20 (8%)	13	45
2	B	93/95 (98%)	88 (95%)	5 (5%)	27	66
2	D	93/95 (98%)	86 (92%)	7 (8%)	17	51
All	All	655/678 (97%)	598 (91%)	57 (9%)	13	43

All (57) residues with a non-rotameric sidechain are listed below:

Mol	Chain	Res	Type
1	A	26	THR
1	A	29	LEU
1	A	46	THR
1	A	53	TRP
1	A	60	ASP
1	A	64	GLU
1	A	67	GLN
1	A	69	ILE
1	A	71	ARG
1	A	84	PHE
1	A	89	ARG
1	A	92	TYR
1	A	106	PRO
1	A	116	VAL
1	A	127	GLN
1	A	129	THR
1	A	136	GLU

Continued on next page...

Continued from previous page...

Mol	Chain	Res	Type
1	A	145	ILE
1	A	146	GLN
1	A	155	ARG
1	A	173	LEU
1	A	187	PRO
1	A	211	PHE
1	A	225	GLN
1	A	226	GLU
2	B	12	ARG
2	B	54	LEU
2	B	70	PHE
2	B	76	ASP
2	B	97	ARG
1	C	17	SER
1	C	26	THR
1	C	46	THR
1	C	53	TRP
1	C	61	GLN
1	C	64	GLU
1	C	71	ARG
1	C	106	PRO
1	C	116	VAL
1	C	121	LYS
1	C	130	SER
1	C	139	LEU
1	C	145	ILE
1	C	146	GLN
1	C	188	LYS
1	C	197	PRO
1	C	202	LEU
1	C	211	PHE
1	C	217	TRP
1	C	225	GLN
2	D	1	ILE
2	D	12	ARG
2	D	54	LEU
2	D	67	TYR
2	D	70	PHE
2	D	76	ASP
2	D	97	ARG

Some sidechains can be flipped to improve hydrogen bonding and reduce clashes. All (7) such sidechains are listed below:

Mol	Chain	Res	Type
1	A	227	GLN
2	B	8	GLN
2	B	89	GLN
1	C	127	GLN
1	C	159	GLN
2	D	42	ASN
2	D	89	GLN

5.3.3 RNA ⓘ

There are no RNA molecules in this entry.

5.4 Non-standard residues in protein, DNA, RNA chains ⓘ

There are no non-standard protein/DNA/RNA residues in this entry.

5.5 Carbohydrates ⓘ

There are no carbohydrates in this entry.

5.6 Ligand geometry ⓘ

1 ligand is modelled in this entry.

In the following table, the Counts columns list the number of bonds (or angles) for which Mogul statistics could be retrieved, the number of bonds (or angles) that are observed in the model and the number of bonds (or angles) that are defined in the chemical component dictionary. The Link column lists molecule types, if any, to which the group is linked. The Z score for a bond length (or angle) is the number of standard deviations the observed value is removed from the expected value. A bond length (or angle) with $|Z| > 2$ is considered an outlier worth inspection. RMSZ is the root-mean-square of all Z scores of the bond lengths (or angles).

Mol	Type	Chain	Res	Link	Bond lengths			Bond angles		
					Counts	RMSZ	$\# Z > 2$	Counts	RMSZ	$\# Z > 2$
3	AGH	A	282	-	59,60,60	0.49	1 (1%)	65,69,69	0.64	0

In the following table, the Chirals column lists the number of chiral outliers, the number of chiral centers analysed, the number of these observed in the model and the number defined in the chemical component dictionary. Similar counts are reported in the Torsion and Rings columns. '-' means no outliers of that kind were identified.

Mol	Type	Chain	Res	Link	Chirals	Torsions	Rings
3	AGH	A	282	-	-	0/58/78/78	0/1/1/1

All (1) bond length outliers are listed below:

Mol	Chain	Res	Type	Atoms	Z	Observed(Å)	Ideal(Å)
3	A	282	AGH	O1A-C1A	2.30	1.44	1.40

There are no bond angle outliers.

There are no chirality outliers.

There are no torsion outliers.

There are no ring outliers.

1 monomer is involved in 14 short contacts:

Mol	Chain	Res	Type	Clashes	Symm-Clashes
3	A	282	AGH	14	0

5.7 Other polymers [i](#)

There are no such residues in this entry.

5.8 Polymer linkage issues [i](#)

There are no chain breaks in this entry.

6 Fit of model and data ⓘ

6.1 Protein, DNA and RNA chains ⓘ

In the following table, the column labelled ‘#RSRZ> 2’ contains the number (and percentage) of RSRZ outliers, followed by percent RSRZ outliers for the chain as percentile scores relative to all X-ray entries and entries of similar resolution. The OWAB column contains the minimum, median, 95th percentile and maximum values of the occupancy-weighted average B-factor per residue. The column labelled ‘Q< 0.9’ lists the number of (and percentage) of residues with an average occupancy less than 0.9.

Mol	Chain	Analysed	<RSRZ>	#RSRZ>2	OWAB(Å ²)	Q<0.9
1	A	272/281 (96%)	-0.35	6 (2%) 65 35	3, 28, 76, 95	0
1	C	278/281 (98%)	-0.39	8 (2%) 55 26	2, 26, 65, 91	0
2	B	100/100 (100%)	-0.36	2 (2%) 68 39	6, 28, 62, 94	0
2	D	100/100 (100%)	-0.20	2 (2%) 68 39	3, 39, 71, 86	0
All	All	750/762 (98%)	-0.35	18 (2%) 62 32	2, 29, 69, 95	0

All (18) RSRZ outliers are listed below:

Mol	Chain	Res	Type	RSRZ
2	D	1	ILE	3.7
1	A	108	ASN	3.6
1	C	4	PRO	2.9
1	C	281	TYR	2.8
2	B	1	ILE	2.8
2	B	0	MET	2.8
1	A	202	LEU	2.5
1	A	6	ARG	2.4
1	C	6	ARG	2.3
1	C	198	GLY	2.2
1	C	280	SER	2.2
1	C	279	GLY	2.2
1	C	199	PRO	2.2
1	A	258	GLY	2.2
1	C	135	GLN	2.1
2	D	0	MET	2.1
1	A	254	GLY	2.1
1	A	197	PRO	2.0

6.2 Non-standard residues in protein, DNA, RNA chains [i](#)

There are no non-standard protein/DNA/RNA residues in this entry.

6.3 Carbohydrates [i](#)

There are no carbohydrates in this entry.

6.4 Ligands [i](#)

In the following table, the Atoms column lists the number of modelled atoms in the group and the number defined in the chemical component dictionary. LLDF column lists the quality of electron density of the group with respect to its neighbouring residues in protein, DNA or RNA chains. The B-factors column lists the minimum, median, 95th percentile and maximum values of B factors of atoms in the group. The column labelled 'Q< 0.9' lists the number of atoms with occupancy less than 0.9.

Mol	Type	Chain	Res	Atoms	RSCC	RSR	LLDF	B-factors(\AA^2)	Q<0.9
3	AGH	A	282	60/60	0.92	0.20	1.39	1,18,31,40	0

6.5 Other polymers [i](#)

There are no such residues in this entry.