



wwPDB X-ray Structure Validation Summary Report ⓘ

Feb 19, 2016 – 09:21 PM GMT

PDB ID : 4ZTU
Title : Structural basis for processivity and antiviral drug toxicity in human mitochondrial DNA replicase
Authors : Szymanski, M.R.; Kuznestov, V.B.; Shumate, C.K.; Meng, Q.; Lee, Y.-S.; Patel, G.; Patel, S.S.; Yin, Y.W.
Deposited on : 2015-05-15
Resolution : 3.30 Å(reported)

This is a wwPDB X-ray Structure Validation Summary Report for a publicly released PDB entry.
We welcome your comments at validation@mail.wwpdb.org
A user guide is available at
<http://wwpdb.org/validation/2016/XrayValidationReportHelp>
with specific help available everywhere you see the ⓘ symbol.

The following versions of software and data (see [references ⓘ](#)) were used in the production of this report:

MolProbity : 4.02b-467
Mogul : 1.7.1 (RC1), CSD as537be (2016)
Xtriage (Phenix) : 1.9-1692
EDS : rb-20026982
Percentile statistics : 20151230.v01 (using entries in the PDB archive December 30th 2015)
Refmac : 5.8.0135
CCP4 : 6.5.0
Ideal geometry (proteins) : Engh & Huber (2001)
Ideal geometry (DNA, RNA) : Parkinson et al. (1996)
Validation Pipeline (wwPDB-VP) : rb-20026982

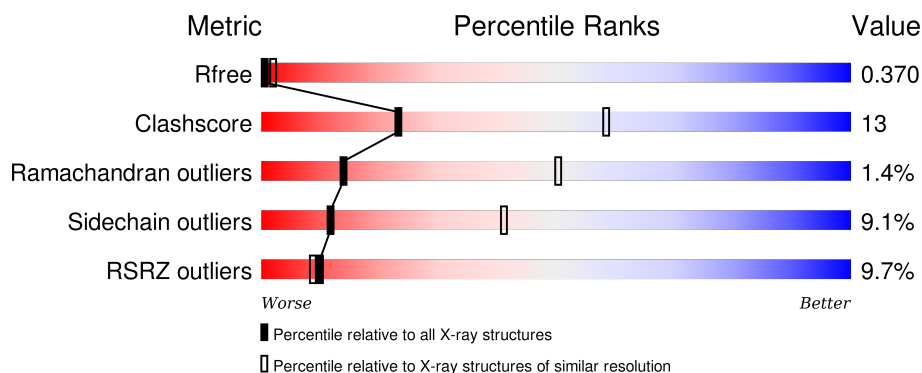
1 Overall quality at a glance ⓘ

The following experimental techniques were used to determine the structure:

X-RAY DIFFRACTION

The reported resolution of this entry is 3.30 Å.

Percentile scores (ranging between 0-100) for global validation metrics of the entry are shown in the following graphic. The table shows the number of entries on which the scores are based.



Metric	Whole archive (#Entries)	Similar resolution (#Entries, resolution range(Å))
R_{free}	91344	2060 (3.40-3.20)
Clashscore	102246	1058 (3.38-3.22)
Ramachandran outliers	100387	1038 (3.38-3.22)
Sidechain outliers	100360	1037 (3.38-3.22)
RSRZ outliers	91569	2070 (3.40-3.20)

The table below summarises the geometric issues observed across the polymeric chains and their fit to the electron density. The red, orange, yellow and green segments on the lower bar indicate the fraction of residues that contain outliers for ≥ 3 , 2, 1 and 0 types of geometric quality criteria. A grey segment represents the fraction of residues that are not modelled. The numeric value for each fraction is indicated below the corresponding segment, with a dot representing fractions $\leq 5\%$. The upper red bar (where present) indicates the fraction of residues that have poor fit to the electron density. The numeric value is given above the bar.

Mol	Chain	Length	Quality of chain
1	A	1222	<div> <div>9%</div> <div>54%</div> <div>23%</div> <div>•</div> <div>20%</div> </div>
2	B	472	<div> <div>6%</div> <div>58%</div> <div>17%</div> <div>•</div> <div>23%</div> </div>
2	C	472	<div> <div>6%</div> <div>56%</div> <div>16%</div> <div>•</div> <div>24%</div> </div>
3	T	27	<div> <div>15%</div> <div>52%</div> <div>41%</div> <div>7%</div> </div>
4	P	24	<div> <div>29%</div> <div>54%</div> <div>38%</div> <div>8%</div> </div>

2 Entry composition

There are 6 unique types of molecules in this entry. The entry contains 14619 atoms, of which 0 are hydrogens and 0 are deuteriums.

In the tables below, the ZeroOcc column contains the number of atoms modelled with zero occupancy, the AltConf column contains the number of residues with at least one atom in alternate conformation and the Trace column contains the number of residues modelled with at most 2 atoms.

- Molecule 1 is a protein called DNA polymerase subunit gamma-1.

Mol	Chain	Residues	Atoms					ZeroOcc	AltConf	Trace
1	A	983	Total	C	N	O	S	0	0	0
			7799	4966	1371	1413	49			

There are 14 discrepancies between the modelled and reference sequences:

Chain	Residue	Modelled	Actual	Comment	Reference
A	29	MET	-	initiating methionine	UNP P54098
A	198	ALA	ASP	engineered mutation	UNP P54098
A	200	ALA	GLU	engineered mutation	UNP P54098
A	1240	ALA	-	expression tag	UNP P54098
A	1241	ALA	-	expression tag	UNP P54098
A	1242	ALA	-	expression tag	UNP P54098
A	1243	LEU	-	expression tag	UNP P54098
A	1244	GLU	-	expression tag	UNP P54098
A	1245	HIS	-	expression tag	UNP P54098
A	1246	HIS	-	expression tag	UNP P54098
A	1247	HIS	-	expression tag	UNP P54098
A	1248	HIS	-	expression tag	UNP P54098
A	1249	HIS	-	expression tag	UNP P54098
A	1250	HIS	-	expression tag	UNP P54098

- Molecule 2 is a protein called DNA polymerase subunit gamma-2, mitochondrial.

Mol	Chain	Residues	Atoms					ZeroOcc	AltConf	Trace
2	B	363	Total	C	N	O	S	0	0	0
			2942	1885	520	521	16			
2	C	357	Total	C	N	O	S	0	0	0
			2886	1852	508	510	16			

There are 24 discrepancies between the modelled and reference sequences:

Chain	Residue	Modelled	Actual	Comment	Reference
B	25	MET	-	initiating methionine	UNP Q9UHN1
B	486	ALA	-	expression tag	UNP Q9UHN1
B	487	ALA	-	expression tag	UNP Q9UHN1
B	488	ALA	-	expression tag	UNP Q9UHN1
B	489	LEU	-	expression tag	UNP Q9UHN1
B	490	GLU	-	expression tag	UNP Q9UHN1
B	491	HIS	-	expression tag	UNP Q9UHN1
B	492	HIS	-	expression tag	UNP Q9UHN1
B	493	HIS	-	expression tag	UNP Q9UHN1
B	494	HIS	-	expression tag	UNP Q9UHN1
B	495	HIS	-	expression tag	UNP Q9UHN1
B	496	HIS	-	expression tag	UNP Q9UHN1
C	25	MET	-	initiating methionine	UNP Q9UHN1
C	486	ALA	-	expression tag	UNP Q9UHN1
C	487	ALA	-	expression tag	UNP Q9UHN1
C	488	ALA	-	expression tag	UNP Q9UHN1
C	489	LEU	-	expression tag	UNP Q9UHN1
C	490	GLU	-	expression tag	UNP Q9UHN1
C	491	HIS	-	expression tag	UNP Q9UHN1
C	492	HIS	-	expression tag	UNP Q9UHN1
C	493	HIS	-	expression tag	UNP Q9UHN1
C	494	HIS	-	expression tag	UNP Q9UHN1
C	495	HIS	-	expression tag	UNP Q9UHN1
C	496	HIS	-	expression tag	UNP Q9UHN1

- Molecule 3 is a DNA chain called DNA (25-MER).

Mol	Chain	Residues	Atoms					ZeroOcc	AltConf	Trace
3	T	25	Total	C	N	O	P	0	0	0
			508	241	89	153	25			

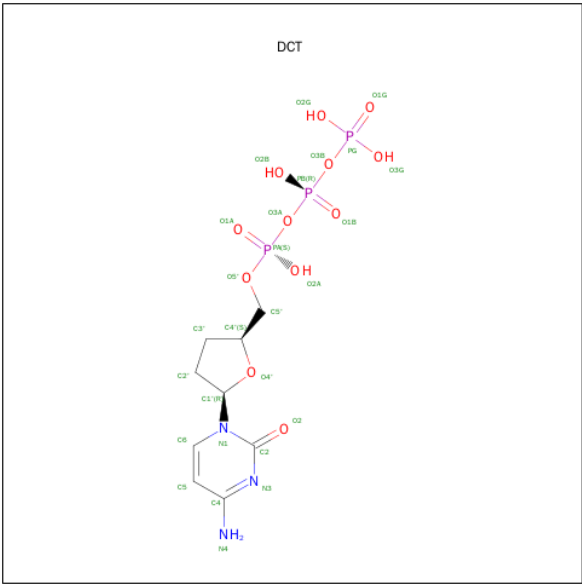
- Molecule 4 is a DNA chain called DNA (5'-D(P*AP*AP*GP*AP*CP*GP*AP*GP*GP*GP*CP*CP*AP*GP*TP*GP*CP*CP*GP*TP*AP*C)-3').

Mol	Chain	Residues	Atoms					ZeroOcc	AltConf	Trace
4	P	22	Total	C	N	O	P	0	0	0
			455	214	92	127	22			

- Molecule 5 is MAGNESIUM ION (three-letter code: MG) (formula: Mg).

Mol	Chain	Residues	Atoms		ZeroOcc	AltConf
5	A	2	Total	Mg	0	0
			2	2		

- Molecule 6 is 2',3'-DIDEOXYCYTIDINE 5'-TRIPHOSPHATE (three-letter code: DCT) (formula: C₉H₁₆N₃O₁₂P₃).

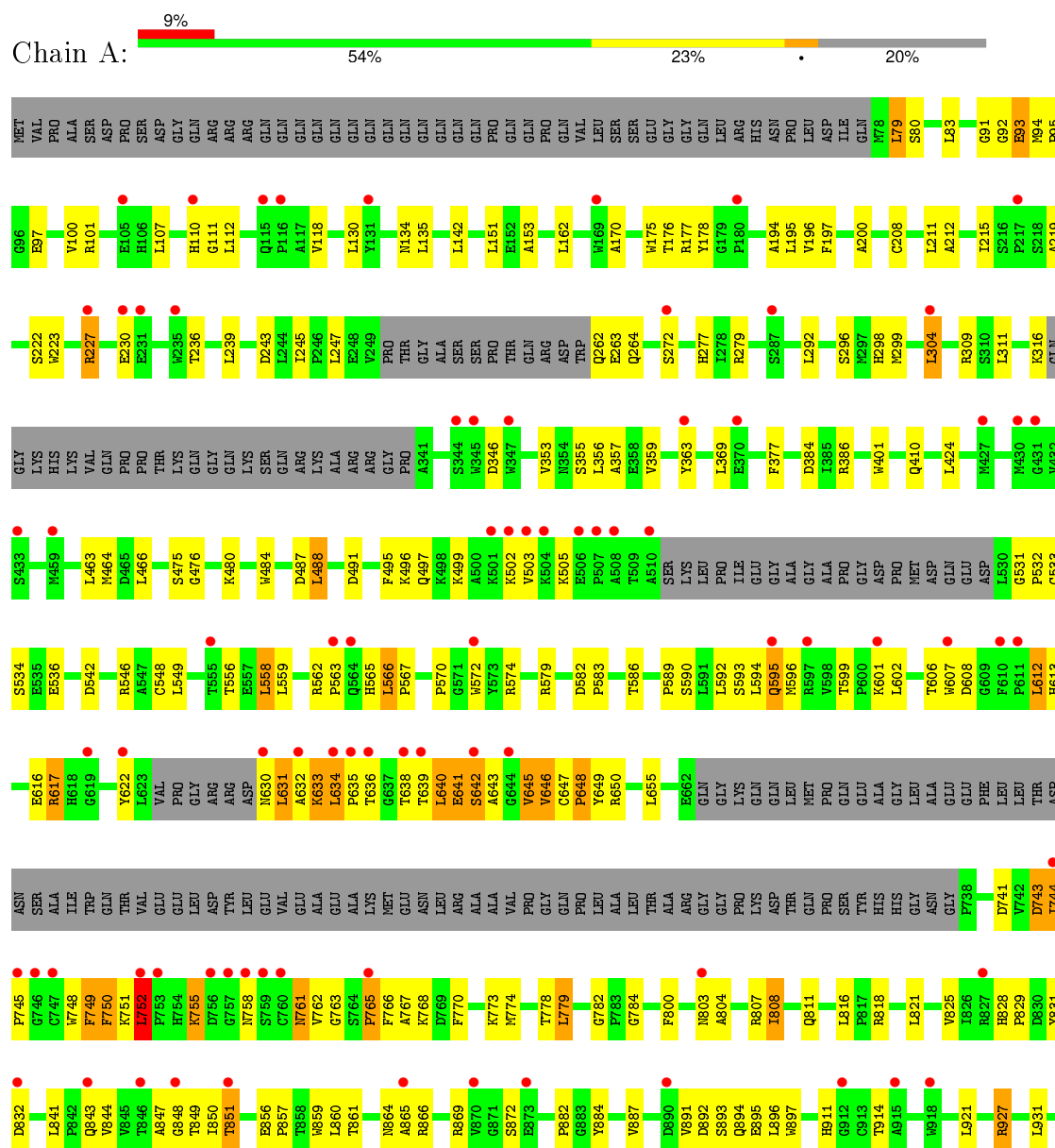


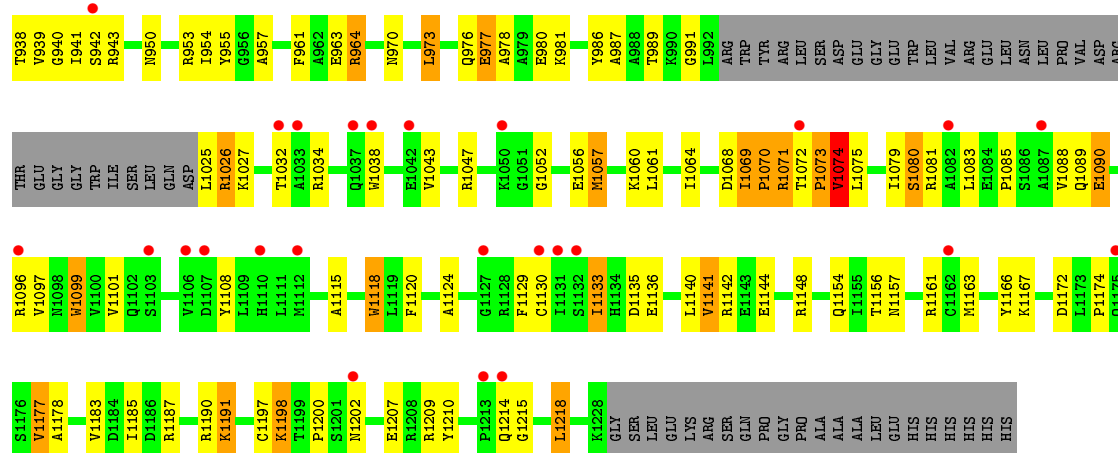
Mol	Chain	Residues	Atoms					ZeroOcc	AltConf
			Total	C	N	O	P		
6	A	1	27	9	3	12	3	0	0

3 Residue-property plots

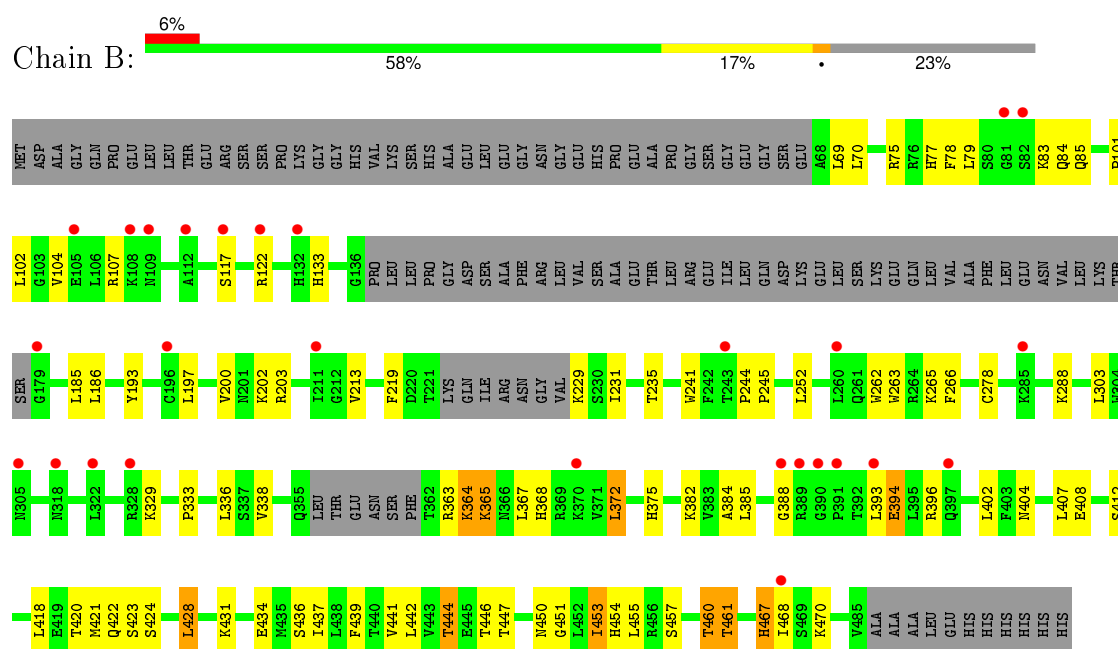
These plots are drawn for all protein, RNA and DNA chains in the entry. The first graphic for a chain summarises the proportions of errors displayed in the second graphic. The second graphic shows the sequence view annotated by issues in geometry and electron density. Residues are color-coded according to the number of geometric quality criteria for which they contain at least one outlier: green = 0, yellow = 1, orange = 2 and red = 3 or more. A red dot above a residue indicates a poor fit to the electron density ($RSRZ > 2$). Stretches of 2 or more consecutive residues without any outlier are shown as a green connector. Residues present in the sample, but not in the model, are shown in grey.

- Molecule 1: DNA polymerase subunit gamma-1

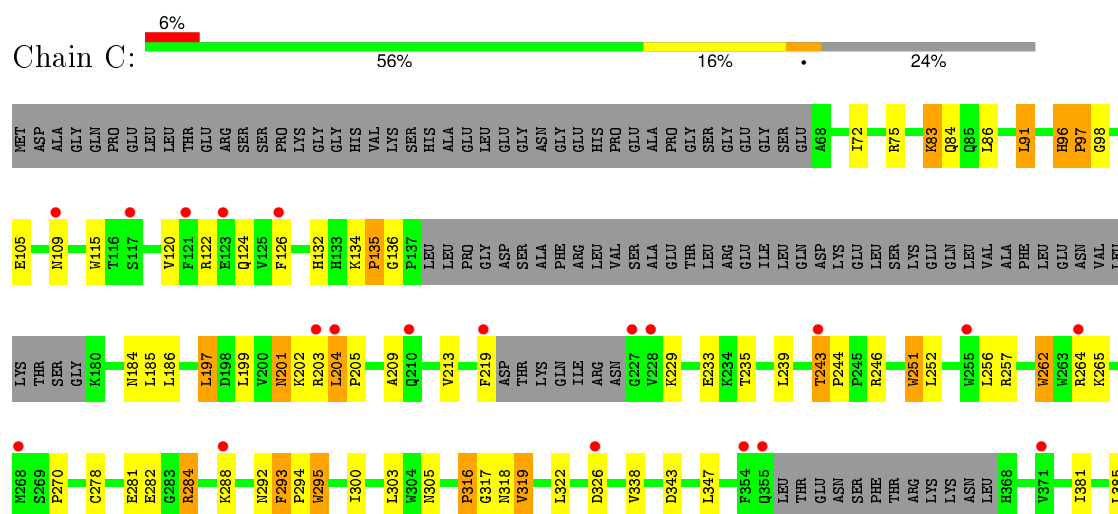


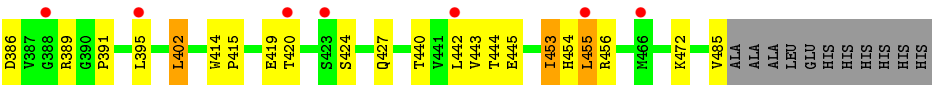


• Molecule 2: DNA polymerase subunit gamma-2, mitochondrial

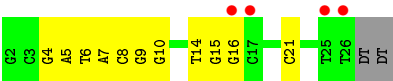


• Molecule 2: DNA polymerase subunit gamma-2, mitochondrial

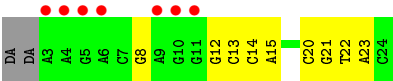




● Molecule 3: DNA (25-MER)



● Molecule 4: DNA (5'-D(P*AP*AP*GP*AP*CP*GP*AP*GP*GP*GP*CP*CP*AP*GP*TP*G P*CP*CP*GP*TP*AP*C)-3')



4 Data and refinement statistics

Property	Value	Source
Space group	P 41 21 2	Depositor
Cell constants a, b, c, α , β , γ	217.57Å 217.57Å 168.28Å 90.00° 90.00° 90.00°	Depositor
Resolution (Å)	42.67 – 3.30 49.04 – 3.30	Depositor EDS
% Data completeness (in resolution range)	98.8 (42.67-3.30) 85.7 (49.04-3.30)	Depositor EDS
R_{merge}	0.08	Depositor
R_{sym}	(Not available)	Depositor
$\langle I/\sigma(I) \rangle$ ¹	2.14 (at 3.33Å)	Xtriage
Refinement program	PHENIX (phenix.refine: 1.9_1692)	Depositor
R, R_{free}	0.316 , 0.316 0.354 , 0.370	Depositor DCC
R_{free} test set	2000 reflections (3.95%)	DCC
Wilson B-factor (Å ²)	119.9	Xtriage
Anisotropy	0.237	Xtriage
Bulk solvent k_{sol} (e/Å ³), B_{sol} (Å ²)	0.26 , -0.7	EDS
Estimated twinning fraction	No twinning to report.	Xtriage
L-test for twinning ²	$\langle L \rangle = 0.52$, $\langle L^2 \rangle = 0.36$	Xtriage
Outliers	1 of 60539 reflections (0.002%)	Xtriage
F_o, F_c correlation	0.87	EDS
Total number of atoms	14619	wwPDB-VP
Average B, all atoms (Å ²)	69.0	wwPDB-VP

Xtriage's analysis on translational NCS is as follows: *The largest off-origin peak in the Patterson function is 2.28% of the height of the origin peak. No significant pseudotranslation is detected.*

¹Intensities estimated from amplitudes.

²Theoretical values of $\langle |L| \rangle$, $\langle L^2 \rangle$ for acentric reflections are 0.5, 0.375 respectively for untwinned datasets, and 0.333, 0.2 for perfectly twinned datasets.

5 Model quality [i](#)

5.1 Standard geometry [i](#)

Bond lengths and bond angles in the following residue types are not validated in this section: DOC, MG, DCT

The Z score for a bond length (or angle) is the number of standard deviations the observed value is removed from the expected value. A bond length (or angle) with $|Z| > 5$ is considered an outlier worth inspection. RMSZ is the root-mean-square of all Z scores of the bond lengths (or angles).

Mol	Chain	Bond lengths		Bond angles	
		RMSZ	# Z >5	RMSZ	# Z >5
1	A	0.23	0/7999	0.45	1/10852 (0.0%)
2	B	0.21	0/3015	0.39	0/4074
2	C	0.23	0/2959	0.44	2/4000 (0.1%)
3	T	0.48	0/567	0.88	0/872
4	P	0.49	0/492	0.78	0/758
All	All	0.25	0/15032	0.48	3/20556 (0.0%)

There are no bond length outliers.

All (3) bond angle outliers are listed below:

Mol	Chain	Res	Type	Atoms	Z	Observed(°)	Ideal(°)
2	C	135	PRO	CA-N-CD	-8.58	99.49	111.50
2	C	96	HIS	C-N-CD	-8.37	102.19	120.60
1	A	752	LEU	C-N-CD	-6.27	106.81	120.60

There are no chirality outliers.

There are no planarity outliers.

5.2 Too-close contacts [i](#)

In the following table, the Non-H and H(model) columns list the number of non-hydrogen atoms and hydrogen atoms in the chain respectively. The H(added) column lists the number of hydrogen atoms added and optimized by MolProbity. The Clashes column lists the number of clashes within the asymmetric unit, whereas Symm-Clashes lists symmetry related clashes.

Mol	Chain	Non-H	H(model)	H(added)	Clashes	Symm-Clashes
1	A	7799	0	7696	243	0
2	B	2942	0	2939	61	0
2	C	2886	0	2874	78	0

Continued on next page...

Continued from previous page...

Mol	Chain	Non-H	H(model)	H(added)	Clashes	Symm-Clashes
3	T	508	0	282	16	0
4	P	455	0	245	10	0
5	A	2	0	0	0	0
6	A	27	0	12	2	0
All	All	14619	0	14048	384	0

The all-atom clashscore is defined as the number of clashes found per 1000 atoms (including hydrogen atoms). The all-atom clashscore for this structure is 13.

The worst 5 of 384 close contacts within the same asymmetric unit are listed below, sorted by their clash magnitude.

Atom-1	Atom-2	Interatomic distance (Å)	Clash overlap (Å)
1:A:634:LEU:CD2	1:A:635:PRO:HD2	1.37	1.49
1:A:634:LEU:HD23	1:A:635:PRO:CD	1.39	1.49
1:A:631:LEU:C	1:A:633:LYS:CE	1.95	1.27
1:A:631:LEU:C	1:A:633:LYS:HE2	1.38	1.25
1:A:640:LEU:C	1:A:640:LEU:HD22	1.61	1.20

There are no symmetry-related clashes.

5.3 Torsion angles [i](#)

5.3.1 Protein backbone [i](#)

In the following table, the Percentiles column shows the percent Ramachandran outliers of the chain as a percentile score with respect to all X-ray entries followed by that with respect to entries of similar resolution.

The Analysed column shows the number of residues for which the backbone conformation was analysed, and the total number of residues.

Mol	Chain	Analysed	Favoured	Allowed	Outliers	Percentiles	
1	A	969/1222 (79%)	846 (87%)	106 (11%)	17 (2%)	11	46
2	B	355/472 (75%)	326 (92%)	27 (8%)	2 (1%)	30	68
2	C	349/472 (74%)	326 (93%)	18 (5%)	5 (1%)	14	50
All	All	1673/2166 (77%)	1498 (90%)	151 (9%)	24 (1%)	14	50

5 of 24 Ramachandran outliers are listed below:

Mol	Chain	Res	Type
1	A	752	LEU
1	A	1070	PRO
2	C	97	PRO
1	A	648	PRO
1	A	767	ALA

5.3.2 Protein sidechains ⓘ

In the following table, the Percentiles column shows the percent sidechain outliers of the chain as a percentile score with respect to all X-ray entries followed by that with respect to entries of similar resolution.

The Analysed column shows the number of residues for which the sidechain conformation was analysed, and the total number of residues.

Mol	Chain	Analysed	Rotameric	Outliers	Percentiles	
1	A	823/1029 (80%)	730 (89%)	93 (11%)	7	30
2	B	325/415 (78%)	308 (95%)	17 (5%)	29	67
2	C	318/415 (77%)	295 (93%)	23 (7%)	18	54
All	All	1466/1859 (79%)	1333 (91%)	133 (9%)	12	41

5 of 133 residues with a non-rotameric sidechain are listed below:

Mol	Chain	Res	Type
1	A	927	ARG
1	A	1069	ILE
2	C	262	TRP
1	A	941	ILE
1	A	989	THR

Some sidechains can be flipped to improve hydrogen bonding and reduce clashes. All (5) such sidechains are listed below:

Mol	Chain	Res	Type
1	A	298	HIS
1	A	354	ASN
1	A	497	GLN
2	C	124	GLN
2	C	427	GLN

5.3.3 RNA ⓘ

There are no RNA molecules in this entry.

5.4 Non-standard residues in protein, DNA, RNA chains ⓘ

1 non-standard protein/DNA/RNA residue is modelled in this entry.

In the following table, the Counts columns list the number of bonds (or angles) for which Mogul statistics could be retrieved, the number of bonds (or angles) that are observed in the model and the number of bonds (or angles) that are defined in the chemical component dictionary. The Link column lists molecule types, if any, to which the group is linked. The Z score for a bond length (or angle) is the number of standard deviations the observed value is removed from the expected value. A bond length (or angle) with $|Z| > 2$ is considered an outlier worth inspection. RMSZ is the root-mean-square of all Z scores of the bond lengths (or angles).

Mol	Type	Chain	Res	Link	Bond lengths			Bond angles		
					Counts	RMSZ	$\# Z > 2$	Counts	RMSZ	$\# Z > 2$
4	DOC	P	24	3,4	12,19,20	0.79	0	14,26,29	0.44	0

In the following table, the Chirals column lists the number of chiral outliers, the number of chiral centers analysed, the number of these observed in the model and the number defined in the chemical component dictionary. Similar counts are reported in the Torsion and Rings columns. '-' means no outliers of that kind were identified.

Mol	Type	Chain	Res	Link	Chirals	Torsions	Rings
4	DOC	P	24	3,4	-	0/3/18/19	0/2/2/2

There are no bond length outliers.

There are no bond angle outliers.

There are no chirality outliers.

There are no torsion outliers.

There are no ring outliers.

No monomer is involved in short contacts.

5.5 Carbohydrates ⓘ

There are no carbohydrates in this entry.

5.6 Ligand geometry

Of 3 ligands modelled in this entry, 2 are monoatomic - leaving 1 for Mogul analysis.

In the following table, the Counts columns list the number of bonds (or angles) for which Mogul statistics could be retrieved, the number of bonds (or angles) that are observed in the model and the number of bonds (or angles) that are defined in the chemical component dictionary. The Link column lists molecule types, if any, to which the group is linked. The Z score for a bond length (or angle) is the number of standard deviations the observed value is removed from the expected value. A bond length (or angle) with $|Z| > 2$ is considered an outlier worth inspection. RMSZ is the root-mean-square of all Z scores of the bond lengths (or angles).

Mol	Type	Chain	Res	Link	Bond lengths			Bond angles		
					Counts	RMSZ	$\# Z > 2$	Counts	RMSZ	$\# Z > 2$
6	DCT	A	4003	5	21,28,28	1.26	4 (19%)	24,43,43	1.26	1 (4%)

In the following table, the Chirals column lists the number of chiral outliers, the number of chiral centers analysed, the number of these observed in the model and the number defined in the chemical component dictionary. Similar counts are reported in the Torsion and Rings columns. '-' means no outliers of that kind were identified.

Mol	Type	Chain	Res	Link	Chirals	Torsions	Rings
6	DCT	A	4003	5	-	0/18/31/31	0/2/2/2

All (4) bond length outliers are listed below:

Mol	Chain	Res	Type	Atoms	Z	Observed(Å)	Ideal(Å)
6	A	4003	DCT	C2-N3	-2.96	1.32	1.38
6	A	4003	DCT	C3'-C2'	-2.14	1.47	1.54
6	A	4003	DCT	PB-O1B	2.07	1.58	1.51
6	A	4003	DCT	C4-N4	2.61	1.42	1.35

All (1) bond angle outliers are listed below:

Mol	Chain	Res	Type	Atoms	Z	Observed(°)	Ideal(°)
6	A	4003	DCT	C3'-C2'-C1'	3.51	106.73	102.75

There are no chirality outliers.

There are no torsion outliers.

There are no ring outliers.

1 monomer is involved in 2 short contacts:

Mol	Chain	Res	Type	Clashes	Symm-Clashes
6	A	4003	DCT	2	0

5.7 Other polymers [i](#)

There are no such residues in this entry.

5.8 Polymer linkage issues [i](#)

There are no chain breaks in this entry.

6 Fit of model and data [i](#)

6.1 Protein, DNA and RNA chains [i](#)

In the following table, the column labelled ‘#RSRZ> 2’ contains the number (and percentage) of RSRZ outliers, followed by percent RSRZ outliers for the chain as percentile scores relative to all X-ray entries and entries of similar resolution. The OWAB column contains the minimum, median, 95th percentile and maximum values of the occupancy-weighted average B-factor per residue. The column labelled ‘Q< 0.9’ lists the number of (and percentage) of residues with an average occupancy less than 0.9.

Mol	Chain	Analysed	<RSRZ>	#RSRZ>2	OWAB(Å ²)	Q<0.9
1	A	983/1222 (80%)	0.70	105 (10%) 8 6	35, 71, 86, 91	0
2	B	363/472 (76%)	0.58	27 (7%) 17 14	46, 67, 83, 90	0
2	C	357/472 (75%)	0.62	27 (7%) 17 14	42, 70, 83, 90	0
3	T	25/27 (92%)	1.08	4 (16%) 3 2	74, 80, 92, 102	0
4	P	21/24 (87%)	1.24	7 (33%) 0 1	71, 85, 99, 104	0
All	All	1749/2217 (78%)	0.67	170 (9%) 10 9	35, 70, 86, 104	0

The worst 5 of 170 RSRZ outliers are listed below:

Mol	Chain	Res	Type	RSRZ
1	A	746	GLY	7.4
2	B	82	SER	7.0
1	A	759	SER	7.0
2	C	121	PHE	5.4
1	A	1213	PRO	5.2

6.2 Non-standard residues in protein, DNA, RNA chains [i](#)

In the following table, the Atoms column lists the number of modelled atoms in the group and the number defined in the chemical component dictionary. LLDF column lists the quality of electron density of the group with respect to its neighbouring residues in protein, DNA or RNA chains. The B-factors column lists the minimum, median, 95th percentile and maximum values of B factors of atoms in the group. The column labelled ‘Q< 0.9’ lists the number of atoms with occupancy less than 0.9.

Mol	Type	Chain	Res	Atoms	RSCC	RSR	LLDF	B-factors(Å ²)	Q<0.9
4	DOC	P	24	18/19	0.92	0.33	-	51,77,117,118	0

6.3 Carbohydrates [i](#)

There are no carbohydrates in this entry.

6.4 Ligands [i](#)

In the following table, the Atoms column lists the number of modelled atoms in the group and the number defined in the chemical component dictionary. LLDF column lists the quality of electron density of the group with respect to its neighbouring residues in protein, DNA or RNA chains. The B-factors column lists the minimum, median, 95th percentile and maximum values of B factors of atoms in the group. The column labelled 'Q< 0.9' lists the number of atoms with occupancy less than 0.9.

Mol	Type	Chain	Res	Atoms	RSCC	RSR	LLDF	B-factors(\AA^2)	Q<0.9
6	DCT	A	4003	27/27	0.90	0.30	-0.63	68,81,115,118	0
5	MG	A	4001	1/1	0.89	0.29	-	73,73,73,73	0
5	MG	A	4002	1/1	0.81	0.29	-	35,35,35,35	0

6.5 Other polymers [i](#)

There are no such residues in this entry.