



Full wwPDB X-ray Structure Validation Report ⓘ

Feb 19, 2016 – 09:19 PM GMT

PDB ID : 4ZYR
Title : Crystal structure of E. coli Lactose permease G46W/G262W bound to p-nitrophenyl alpha-D-galactopyranoside (alpha-NPG)
Authors : Kumar, H.; Finer-Moore, J.S.; Kaback, H.R.; Stroud, R.M.
Deposited on : 2015-05-22
Resolution : 3.31 Å(reported)

This is a Full wwPDB X-ray Structure Validation Report for a publicly released PDB entry.
We welcome your comments at validation@mail.wwpdb.org
A user guide is available at
<http://wwpdb.org/validation/2016/XrayValidationReportHelp>
with specific help available everywhere you see the ⓘ symbol.

The following versions of software and data (see [references ⓘ](#)) were used in the production of this report:

MolProbity : 4.02b-467
Mogul : 1.7.1 (RC1), CSD as537be (2016)
Xtriage (Phenix) : 1.9-1692
EDS : rb-20026982
Percentile statistics : 20151230.v01 (using entries in the PDB archive December 30th 2015)
Refmac : 5.8.0135
CCP4 : 6.5.0
Ideal geometry (proteins) : Engh & Huber (2001)
Ideal geometry (DNA, RNA) : Parkinson et al. (1996)
Validation Pipeline (wwPDB-VP) : rb-20026982

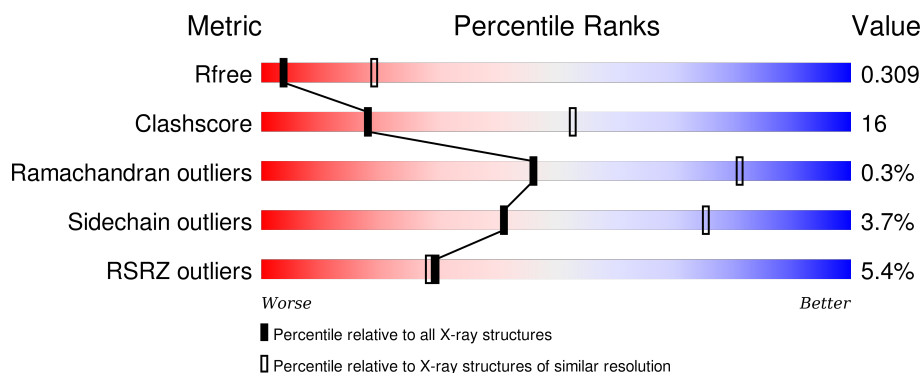
1 Overall quality at a glance

The following experimental techniques were used to determine the structure:

X-RAY DIFFRACTION

The reported resolution of this entry is 3.31 Å.

Percentile scores (ranging between 0-100) for global validation metrics of the entry are shown in the following graphic. The table shows the number of entries on which the scores are based.



Metric	Whole archive (#Entries)	Similar resolution (#Entries, resolution range(Å))
R_{free}	91344	1198 (3.40-3.24)
Clashscore	102246	1280 (3.40-3.24)
Ramachandran outliers	100387	1260 (3.40-3.24)
Sidechain outliers	100360	1259 (3.40-3.24)
RSRZ outliers	91569	1203 (3.40-3.24)

The table below summarises the geometric issues observed across the polymeric chains and their fit to the electron density. The red, orange, yellow and green segments on the lower bar indicate the fraction of residues that contain outliers for ≥ 3 , 2, 1 and 0 types of geometric quality criteria. A grey segment represents the fraction of residues that are not modelled. The numeric value for each fraction is indicated below the corresponding segment, with a dot representing fractions $\leq 5\%$. The upper red bar (where present) indicates the fraction of residues that have poor fit to the electron density. The numeric value is given above the bar.

Mol	Chain	Length	Quality of chain
1	A	417	
1	B	417	

The following table lists non-polymeric compounds, carbohydrate monomers and non-standard residues in protein, DNA, RNA chains that are outliers for geometric or electron-density-fit criteria:

Mol	Type	Chain	Res	Chirality	Geometry	Clashes	Electron density
2	9PG	A	501	-	-	-	X

2 Entry composition [i](#)

There are 3 unique types of molecules in this entry. The entry contains 6271 atoms, of which 30 are hydrogens and 0 are deuteriums.

In the tables below, the ZeroOcc column contains the number of atoms modelled with zero occupancy, the AltConf column contains the number of residues with at least one atom in alternate conformation and the Trace column contains the number of residues modelled with at most 2 atoms.

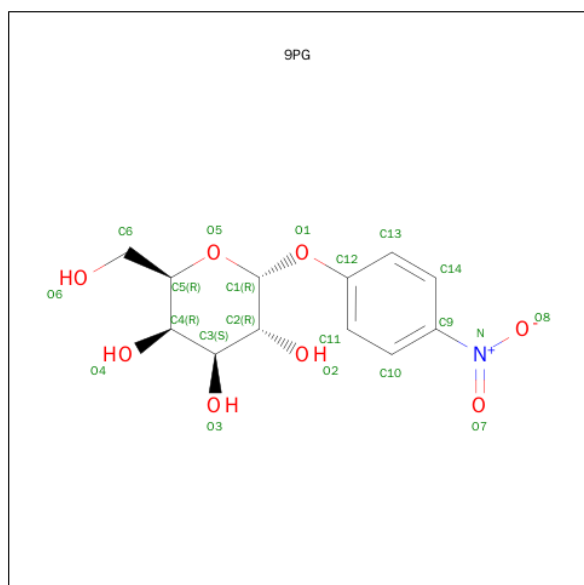
- Molecule 1 is a protein called Lactose permease.

Mol	Chain	Residues	Atoms					ZeroOcc	AltConf	Trace
1	A	387	Total	C	N	O	S	0	0	0
			3086	2102	465	498	21			
1	B	385	Total	C	N	O	S	0	0	0
			3071	2094	463	493	21			

There are 4 discrepancies between the modelled and reference sequences:

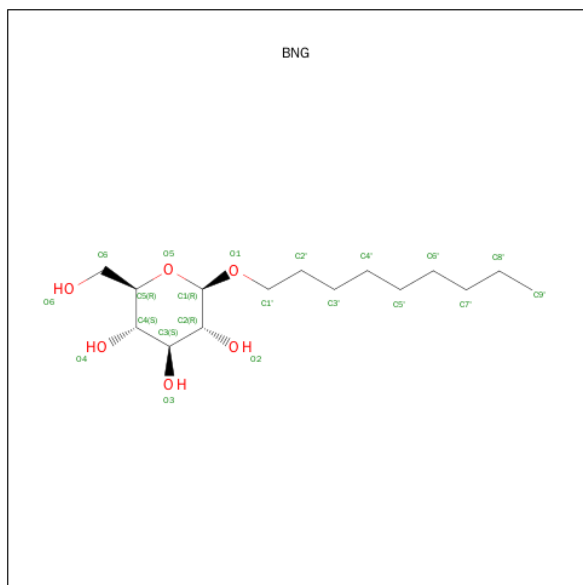
Chain	Residue	Modelled	Actual	Comment	Reference
A	46	TRP	GLY	engineered mutation	UNP P02920
A	262	TRP	GLY	engineered mutation	UNP P02920
B	46	TRP	GLY	engineered mutation	UNP P02920
B	262	TRP	GLY	engineered mutation	UNP P02920

- Molecule 2 is 4-nitrophenyl alpha-D-galactopyranoside (three-letter code: 9PG) (formula: $C_{12}H_{15}NO_8$).



Mol	Chain	Residues	Atoms				ZeroOcc	AltConf
2	A	1	Total	C	N	O	0	0
			21	12	1	8		
2	B	1	Total	C	N	O	0	0
			21	12	1	8		

- Molecule 3 is B-NONYLGLUCOSIDE (three-letter code: BNG) (formula: $C_{15}H_{30}O_6$).

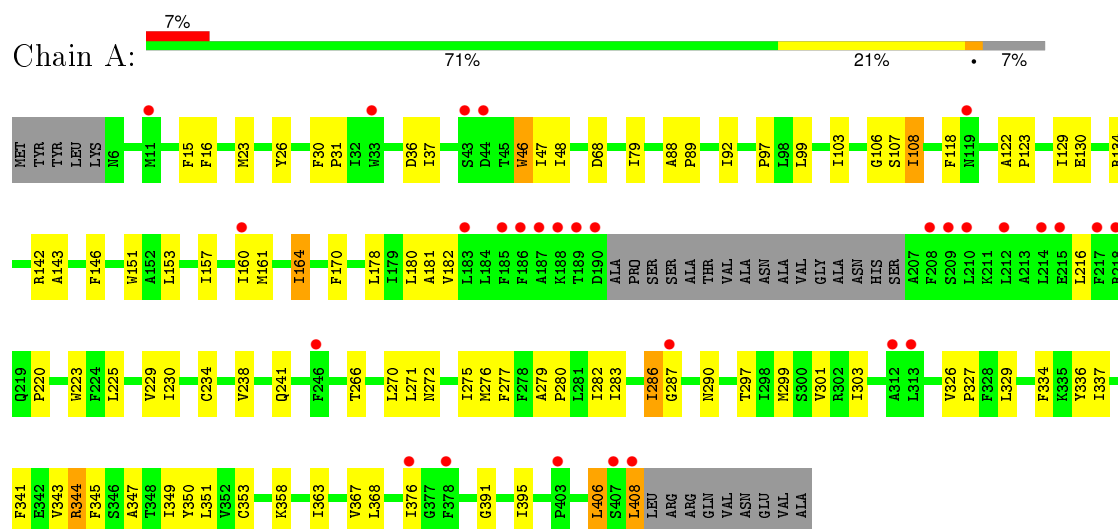


Mol	Chain	Residues	Atoms				ZeroOcc	AltConf
3	A	1	Total	C	H	O	0	0
			51	15	30	6		
3	B	1	Total	C	O		0	0
			21	15	6			

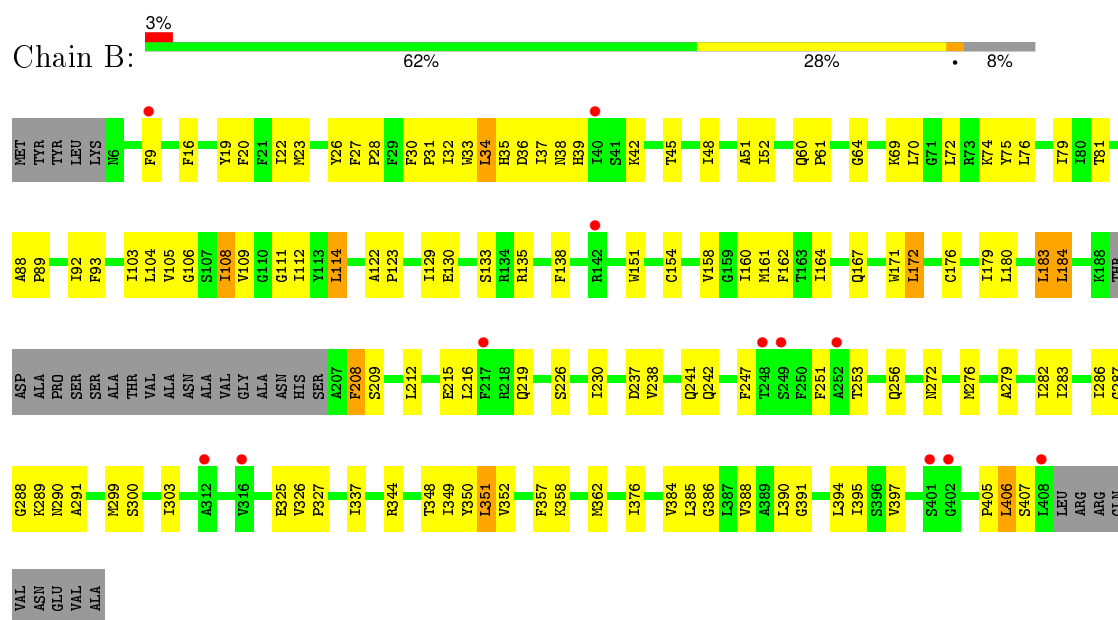
3 Residue-property plots [i](#)

These plots are drawn for all protein, RNA and DNA chains in the entry. The first graphic for a chain summarises the proportions of errors displayed in the second graphic. The second graphic shows the sequence view annotated by issues in geometry and electron density. Residues are color-coded according to the number of geometric quality criteria for which they contain at least one outlier: green = 0, yellow = 1, orange = 2 and red = 3 or more. A red dot above a residue indicates a poor fit to the electron density ($RSRZ > 2$). Stretches of 2 or more consecutive residues without any outlier are shown as a green connector. Residues present in the sample, but not in the model, are shown in grey.

• Molecule 1: Lactose permease



• Molecule 1: Lactose permease



4 Data and refinement statistics

Property	Value	Source
Space group	C 2 2 21	Depositor
Cell constants a, b, c, α , β , γ	103.15Å 121.99Å 266.09Å 90.00° 90.00° 90.00°	Depositor
Resolution (Å)	37.04 – 3.31 37.04 – 3.30	Depositor EDS
% Data completeness (in resolution range)	96.1 (37.04-3.31) 80.7 (37.04-3.30)	Depositor EDS
R_{merge}	0.15	Depositor
R_{sym}	(Not available)	Depositor
$\langle I/\sigma(I) \rangle$ ¹	1.35 (at 3.32Å)	Xtriage
Refinement program	PHENIX (phenix.refine: dev_1700)	Depositor
R, R_{free}	0.259 , 0.278 0.289 , 0.309	Depositor DCC
R_{free} test set	1985 reflections (10.48%)	DCC
Wilson B-factor (Å ²)	97.4	Xtriage
Anisotropy	0.127	Xtriage
Bulk solvent k_{sol} (e/Å ³), B_{sol} (Å ²)	0.23 , 81.0	EDS
Estimated twinning fraction	No twinning to report.	Xtriage
L-test for twinning ²	$\langle L \rangle = 0.43$, $\langle L^2 \rangle = 0.26$	Xtriage
Outliers	0 of 25009 reflections	Xtriage
F_o, F_c correlation	0.91	EDS
Total number of atoms	6271	wwPDB-VP
Average B, all atoms (Å ²)	141.0	wwPDB-VP

Xtriage's analysis on translational NCS is as follows: *The largest off-origin peak in the Patterson function is 3.84% of the height of the origin peak. No significant pseudotranslation is detected.*

¹Intensities estimated from amplitudes.

²Theoretical values of $\langle |L| \rangle$, $\langle L^2 \rangle$ for acentric reflections are 0.5, 0.375 respectively for untwinned datasets, and 0.333, 0.2 for perfectly twinned datasets.

5 Model quality [i](#)

5.1 Standard geometry [i](#)

Bond lengths and bond angles in the following residue types are not validated in this section: BNG, 9PG

The Z score for a bond length (or angle) is the number of standard deviations the observed value is removed from the expected value. A bond length (or angle) with $|Z| > 5$ is considered an outlier worth inspection. RMSZ is the root-mean-square of all Z scores of the bond lengths (or angles).

Mol	Chain	Bond lengths		Bond angles	
		RMSZ	$\# Z > 5$	RMSZ	$\# Z > 5$
1	A	0.28	0/3182	0.46	0/4312
1	B	0.29	0/3167	0.49	1/4291 (0.0%)
All	All	0.28	0/6349	0.47	1/8603 (0.0%)

There are no bond length outliers.

All (1) bond angle outliers are listed below:

Mol	Chain	Res	Type	Atoms	Z	Observed(°)	Ideal(°)
1	B	287	GLY	N-CA-C	-5.47	99.42	113.10

There are no chirality outliers.

There are no planarity outliers.

5.2 Too-close contacts [i](#)

In the following table, the Non-H and H(model) columns list the number of non-hydrogen atoms and hydrogen atoms in the chain respectively. The H(added) column lists the number of hydrogen atoms added and optimized by MolProbity. The Clashes column lists the number of clashes within the asymmetric unit, whereas Symm-Clashes lists symmetry related clashes.

Mol	Chain	Non-H	H(model)	H(added)	Clashes	Symm-Clashes
1	A	3086	0	3120	90	1
1	B	3071	0	3109	108	1
2	A	21	0	15	2	0
2	B	21	0	15	1	0
3	A	21	30	30	1	0
3	B	21	0	30	6	0
All	All	6241	30	6319	197	1

The all-atom clashscore is defined as the number of clashes found per 1000 atoms (including hydrogen atoms). The all-atom clashscore for this structure is 16.

All (197) close contacts within the same asymmetric unit are listed below, sorted by their clash magnitude.

Atom-1	Atom-2	Interatomic distance (Å)	Clash overlap (Å)
1:A:286:ILE:CD1	1:A:290:ASN:HB2	1.26	1.56
1:A:286:ILE:HD11	1:A:290:ASN:CB	1.35	1.52
1:A:286:ILE:HD12	1:A:286:ILE:O	1.35	1.23
1:A:282:ILE:O	1:A:286:ILE:HG22	1.37	1.21
1:A:282:ILE:O	1:A:286:ILE:CG2	1.97	1.12
1:A:286:ILE:CD1	1:A:290:ASN:CB	2.08	1.04
1:A:337:ILE:HG23	1:A:349:ILE:HD11	1.39	1.02
1:A:286:ILE:HD12	1:A:286:ILE:C	1.88	0.94
1:B:337:ILE:HD12	1:B:349:ILE:HG13	1.51	0.92
1:B:282:ILE:HG22	1:B:286:ILE:CD1	2.00	0.91
1:B:171:TRP:HB3	3:B:502:BNG:H5'1	1.54	0.88
1:B:282:ILE:HG22	1:B:286:ILE:HD12	1.55	0.88
1:B:288:GLY:O	1:B:291:ALA:N	2.09	0.85
1:A:164:ILE:HD13	1:A:164:ILE:N	1.93	0.83
1:B:282:ILE:CG2	1:B:286:ILE:HD11	2.08	0.82
1:A:164:ILE:H	1:A:164:ILE:HD13	1.46	0.81
1:A:103:ILE:HG23	1:A:106:GLY:H	1.46	0.80
1:A:286:ILE:HD13	1:A:290:ASN:CB	2.12	0.78
1:B:286:ILE:HG22	1:B:290:ASN:HB2	1.66	0.76
1:A:161:MET:HA	1:A:164:ILE:CG1	2.14	0.76
1:B:37:ILE:HG13	1:B:38:ASN:ND2	2.03	0.73
1:B:114:LEU:H	1:B:114:LEU:HD23	1.54	0.72
1:B:216:LEU:HD13	1:B:349:ILE:CG2	2.20	0.71
1:B:290:ASN:HD21	1:B:405:PRO:HA	1.55	0.71
1:B:171:TRP:CB	3:B:502:BNG:H5'1	2.21	0.70
1:A:220:PRO:HA	1:A:223:TRP:HD1	1.57	0.69
1:B:282:ILE:CG2	1:B:286:ILE:CD1	2.68	0.69
1:B:33:TRP:CD1	1:B:37:ILE:HD11	2.27	0.68
1:A:160:ILE:O	1:A:164:ILE:HD11	1.94	0.68
1:B:31:PRO:HA	1:B:34:LEU:CD1	2.23	0.68
1:B:105:VAL:HA	1:B:108:ILE:CD1	2.24	0.67
1:A:238:VAL:HA	1:A:241:GLN:HG3	1.77	0.67
1:A:286:ILE:CD1	1:A:290:ASN:HB3	2.22	0.66
1:B:37:ILE:HG13	1:B:38:ASN:HD22	1.59	0.65
1:A:408:LEU:H	1:A:408:LEU:HD23	1.63	0.64
1:A:161:MET:HA	1:A:164:ILE:HD11	1.79	0.63
1:B:70:LEU:HD13	1:B:75:TYR:HB3	1.81	0.62

Continued on next page...

Continued from previous page...

Atom-1	Atom-2	Interatomic distance (Å)	Clash overlap (Å)
1:B:160:ILE:HG13	1:B:161:MET:HG2	1.82	0.62
1:A:337:ILE:HG23	1:A:349:ILE:CD1	2.23	0.61
1:B:351:LEU:N	1:B:351:LEU:HD13	2.15	0.61
1:B:104:LEU:O	1:B:108:ILE:HG23	2.00	0.61
1:B:31:PRO:HA	1:B:34:LEU:HD11	1.83	0.61
1:B:19:TYR:O	1:B:22:ILE:HG22	2.01	0.60
1:B:279:ALA:O	1:B:283:ILE:HG12	2.01	0.59
1:B:288:GLY:O	1:B:291:ALA:HB3	2.03	0.59
1:A:225:LEU:HD13	1:A:336:TYR:CE2	2.38	0.59
1:A:286:ILE:HG13	1:A:287:GLY:O	2.03	0.58
1:A:161:MET:HA	1:A:164:ILE:CD1	2.33	0.58
1:A:299:MET:CE	1:A:329:LEU:HD22	2.33	0.58
1:B:282:ILE:HG23	1:B:286:ILE:HD11	1.85	0.57
1:B:290:ASN:HD21	1:B:405:PRO:CA	2.18	0.57
1:A:406:LEU:H	1:A:406:LEU:HD23	1.69	0.57
1:B:30:PHE:N	1:B:31:PRO:HD2	2.19	0.56
1:A:23:MET:HE2	1:A:118:PHE:CD1	2.40	0.56
1:A:271:LEU:O	1:A:275:ILE:HG12	2.05	0.56
1:A:99:LEU:HA	1:A:107:SER:OG	2.05	0.56
1:A:142:ARG:O	1:A:143:ALA:HB3	2.05	0.55
1:A:279:ALA:O	1:A:283:ILE:HG12	2.06	0.55
1:A:142:ARG:HE	1:A:277:PHE:HE2	1.53	0.55
1:A:299:MET:O	1:A:303:ILE:HG13	2.06	0.55
1:B:288:GLY:O	1:B:289:LYS:C	2.45	0.54
1:A:391:GLY:O	1:A:395:ILE:HG13	2.07	0.54
1:B:209:SER:OG	1:B:212:LEU:HG	2.06	0.54
1:B:286:ILE:CG2	1:B:290:ASN:HB2	2.35	0.54
1:A:161:MET:CA	1:A:164:ILE:HD11	2.38	0.54
1:B:237:ASP:O	1:B:241:GLN:HG3	2.07	0.54
1:A:164:ILE:CD1	1:A:164:ILE:N	2.63	0.54
1:B:122:ALA:N	1:B:123:PRO:HD2	2.23	0.54
1:A:164:ILE:CD1	1:A:164:ILE:H	2.11	0.53
1:A:363:ILE:O	1:A:367:VAL:HG23	2.08	0.53
1:B:283:ILE:HD12	1:B:291:ALA:CB	2.39	0.53
1:A:153:LEU:O	1:A:157:ILE:HG12	2.08	0.53
1:B:391:GLY:O	1:B:395:ILE:HG12	2.09	0.53
1:B:216:LEU:HD23	1:B:219:GLN:OE1	2.08	0.53
1:A:48:ILE:CG1	1:A:108:ILE:HD11	2.38	0.53
1:A:48:ILE:HA	1:A:108:ILE:HD11	1.91	0.53
1:B:176:CYS:HA	1:B:179:ILE:HG22	1.91	0.53
1:B:406:LEU:HD12	1:B:407:SER:H	1.73	0.52

Continued on next page...

Continued from previous page...

Atom-1	Atom-2	Interatomic distance (Å)	Clash overlap (Å)
1:B:34:LEU:HD23	1:B:48:ILE:HD13	1.90	0.52
1:A:350:TYR:HD2	1:A:351:LEU:HD22	1.75	0.52
1:A:143:ALA:HA	1:A:146:PHE:HD1	1.72	0.52
1:A:88:ALA:HB3	1:A:89:PRO:HD3	1.91	0.52
1:A:122:ALA:N	1:A:123:PRO:HD2	2.25	0.52
1:A:286:ILE:HD11	1:A:290:ASN:CA	2.30	0.52
1:A:220:PRO:HA	1:A:223:TRP:CD1	2.43	0.51
1:B:406:LEU:HD12	1:B:407:SER:N	2.25	0.51
1:A:143:ALA:HA	1:A:146:PHE:CD1	2.46	0.51
1:B:171:TRP:CD1	3:B:502:BNG:H3'1	2.46	0.51
1:A:229:VAL:HG11	1:A:353:CYS:O	2.10	0.51
1:A:299:MET:HE3	1:A:329:LEU:HD22	1.93	0.51
1:B:253:THR:O	1:B:256:GLN:HG2	2.12	0.50
1:B:303:ILE:CG2	1:B:386:GLY:HA2	2.41	0.50
1:B:27:PHE:HB3	1:B:28:PRO:HD3	1.92	0.50
1:B:300:SER:OG	1:B:390:LEU:HB2	2.12	0.50
1:A:46:TRP:CD1	1:A:47:ILE:HG12	2.46	0.50
1:A:79:ILE:HD13	1:B:93:PHE:CE1	2.47	0.49
1:A:99:LEU:HA	1:A:107:SER:CB	2.42	0.49
1:B:351:LEU:H	1:B:351:LEU:HD13	1.77	0.49
1:A:161:MET:HA	1:A:164:ILE:HG12	1.93	0.49
1:B:111:GLY:HA2	1:B:114:LEU:HD21	1.94	0.49
1:B:64:GLY:HA2	1:B:351:LEU:HD21	1.94	0.48
1:B:226:SER:O	1:B:230:ILE:HD12	2.13	0.48
1:A:130:GLU:HG3	1:A:334:PHE:CD1	2.48	0.48
1:B:208:PHE:CD1	1:B:208:PHE:C	2.86	0.48
1:B:92:ILE:HG23	1:B:167:GLN:HE21	1.79	0.48
1:B:349:ILE:HA	1:B:352:VAL:HG22	1.94	0.48
1:A:178:LEU:HB2	3:B:502:BNG:H8'2	1.96	0.48
1:B:33:TRP:HD1	1:B:37:ILE:HD11	1.78	0.48
1:B:326:VAL:N	1:B:327:PRO:HD2	2.29	0.47
1:A:337:ILE:O	1:A:341:PHE:HB2	2.14	0.47
1:A:299:MET:HE1	1:A:329:LEU:HD22	1.96	0.47
1:A:97:PRO:HG3	3:A:502:BNG:H7'1	1.96	0.47
1:B:272:ASN:OD1	1:B:327:PRO:HD3	2.14	0.47
1:A:368:LEU:O	1:A:368:LEU:HD12	2.15	0.47
1:B:167:GLN:NE2	3:B:502:BNG:O3	2.48	0.46
1:B:350:TYR:HB3	1:B:351:LEU:HD13	1.97	0.46
1:B:212:LEU:HD12	1:B:344:ARG:HH12	1.80	0.46
1:B:81:THR:HG22	1:B:180:LEU:HD23	1.97	0.46
1:B:79:ILE:N	1:B:79:ILE:HD12	2.30	0.46

Continued on next page...

Continued from previous page...

Atom-1	Atom-2	Interatomic distance (Å)	Clash overlap (Å)
1:B:32:ILE:HD12	1:B:32:ILE:N	2.30	0.46
1:B:230:ILE:HD11	1:B:357:PHE:HB3	1.97	0.46
1:B:288:GLY:O	1:B:291:ALA:CB	2.63	0.46
1:A:30:PHE:N	1:A:31:PRO:HD2	2.30	0.46
1:B:337:ILE:HG23	1:B:349:ILE:HD11	1.97	0.46
1:B:79:ILE:HD12	1:B:79:ILE:H	1.80	0.46
1:B:32:ILE:HD12	1:B:32:ILE:H	1.80	0.46
1:B:74:LYS:HB3	1:B:184:LEU:HD21	1.98	0.46
1:A:160:ILE:O	1:A:164:ILE:CD1	2.64	0.46
1:B:303:ILE:HG23	1:B:386:GLY:HA2	1.98	0.46
1:B:384:VAL:O	1:B:388:VAL:HG23	2.15	0.46
1:B:34:LEU:H	1:B:34:LEU:HD12	1.81	0.46
1:B:303:ILE:HD11	1:B:385:LEU:HB3	1.98	0.46
1:A:279:ALA:N	1:A:280:PRO:HD2	2.31	0.45
1:B:154:CYS:O	1:B:158:VAL:HG23	2.17	0.45
1:B:172:LEU:HD13	1:B:172:LEU:O	2.16	0.45
1:A:92:ILE:HD11	1:A:170:PHE:CD1	2.51	0.45
1:B:348:THR:O	1:B:352:VAL:HG13	2.17	0.45
1:B:288:GLY:C	1:B:291:ALA:H	2.14	0.45
1:A:181:ALA:HB2	1:B:171:TRP:CZ3	2.51	0.45
1:A:272:ASN:OD1	1:A:327:PRO:HD3	2.17	0.45
1:B:51:ALA:HB2	1:B:108:ILE:HG13	1.98	0.45
1:A:88:ALA:HB3	1:A:89:PRO:CD	2.47	0.45
1:A:37:ILE:HG22	1:A:37:ILE:O	2.17	0.45
1:A:161:MET:HA	1:A:164:ILE:HG13	1.97	0.44
1:A:276:MET:HA	1:A:279:ALA:HB2	1.99	0.44
1:B:183:LEU:HD13	1:B:183:LEU:H	1.83	0.44
1:A:48:ILE:HG12	1:A:108:ILE:CD1	2.48	0.44
1:B:103:ILE:HG13	1:B:106:GLY:H	1.82	0.44
1:B:348:THR:O	1:B:352:VAL:HG22	2.18	0.44
1:A:130:GLU:HG3	1:A:334:PHE:CG	2.52	0.44
1:A:326:VAL:HB	1:A:327:PRO:HD3	2.00	0.44
1:A:88:ALA:O	1:A:92:ILE:HG12	2.18	0.44
1:A:326:VAL:N	1:A:327:PRO:HD2	2.32	0.44
1:B:394:LEU:O	1:B:397:VAL:HG22	2.18	0.44
1:B:299:MET:HG3	1:B:325:GLU:HG3	2.00	0.43
1:A:134:ARG:NH1	1:A:343:VAL:HG11	2.33	0.43
1:B:238:VAL:HG13	1:B:362:MET:HG3	2.00	0.43
1:A:238:VAL:HA	1:A:241:GLN:CG	2.45	0.43
1:B:283:ILE:HD12	1:B:291:ALA:HB2	1.99	0.43
1:B:299:MET:CG	1:B:325:GLU:HG3	2.48	0.43

Continued on next page...

Continued from previous page...

Atom-1	Atom-2	Interatomic distance (Å)	Clash overlap (Å)
1:B:35:HIS:O	1:B:39:HIS:HA	2.18	0.43
1:B:42:LYS:HA	1:B:45:THR:HG23	1.99	0.43
1:B:171:TRP:HB3	3:B:502:BNG:C5'	2.37	0.43
1:A:286:ILE:HD13	1:A:290:ASN:HB3	1.92	0.43
1:A:230:ILE:O	1:A:234:CYS:HB3	2.18	0.43
1:B:130:GLU:O	1:B:133:SER:HB3	2.19	0.43
1:A:178:LEU:O	1:A:182:VAL:HG23	2.18	0.43
1:B:164:ILE:HD12	1:B:164:ILE:N	2.34	0.43
1:A:48:ILE:HG13	1:A:108:ILE:HD11	2.01	0.43
1:B:30:PHE:N	1:B:31:PRO:CD	2.82	0.43
1:B:60:GLN:N	1:B:61:PRO:HD2	2.34	0.43
1:A:216:LEU:HD11	1:A:345:PHE:CG	2.54	0.42
1:B:88:ALA:HB3	1:B:89:PRO:HD3	2.00	0.42
1:B:282:ILE:O	1:B:286:ILE:HG13	2.18	0.42
1:A:238:VAL:O	1:A:241:GLN:HB2	2.19	0.42
1:B:70:LEU:HD12	1:B:76:LEU:HB2	2.01	0.42
1:B:337:ILE:CD1	1:B:349:ILE:HG13	2.37	0.42
1:B:288:GLY:O	1:B:291:ALA:CA	2.67	0.42
1:B:358:LYS:O	1:B:362:MET:HB2	2.20	0.42
1:A:343:VAL:C	1:A:345:PHE:H	2.21	0.42
1:A:266:THR:O	1:A:270:LEU:HD23	2.20	0.42
1:B:16:PHE:CE2	1:B:129:ILE:HG21	2.55	0.41
1:A:16:PHE:CZ	1:A:129:ILE:HD12	2.55	0.41
1:A:15:PHE:CE1	1:A:180:LEU:HG	2.55	0.41
1:A:297:THR:O	1:A:301:VAL:HG23	2.20	0.41
1:A:151:TRP:CH2	2:A:501:9PG:H10	2.55	0.41
1:B:72:LEU:CD2	1:B:135:ARG:HG3	2.51	0.41
1:B:9:PHE:HD1	1:B:138:PHE:HB2	1.86	0.41
1:B:109:VAL:O	1:B:112:ILE:HG13	2.20	0.41
1:B:52:ILE:CD1	1:B:114:LEU:HD11	2.51	0.41
2:A:501:9PG:H7	2:A:501:9PG:H9	1.45	0.41
1:B:351:LEU:HD22	1:B:351:LEU:H	1.85	0.40
1:B:20:PHE:CD2	1:B:23:MET:CE	3.05	0.40
1:B:151:TRP:CE3	2:B:501:9PG:H3	2.55	0.40
1:A:229:VAL:CG1	1:A:358:LYS:HB2	2.51	0.40
1:B:247:PHE:CE2	1:B:251:PHE:HE1	2.40	0.40
1:A:68:ASP:OD1	1:A:347:ALA:HB3	2.21	0.40

All (1) symmetry-related close contacts are listed below. The label for Atom-2 includes the symmetry operator and encoded unit-cell translations to be applied.

Atom-1	Atom-2	Interatomic distance (Å)	Clash overlap (Å)
1:A:344:ARG:NH1	1:B:215:GLU:OE1[5_555]	2.19	0.01

5.3 Torsion angles [i](#)

5.3.1 Protein backbone [i](#)

In the following table, the Percentiles column shows the percent Ramachandran outliers of the chain as a percentile score with respect to all X-ray entries followed by that with respect to entries of similar resolution.

The Analysed column shows the number of residues for which the backbone conformation was analysed, and the total number of residues.

Mol	Chain	Analysed	Favoured	Allowed	Outliers	Percentiles	
1	A	383/417 (92%)	364 (95%)	18 (5%)	1 (0%)	46	81
1	B	381/417 (91%)	366 (96%)	14 (4%)	1 (0%)	46	81
All	All	764/834 (92%)	730 (96%)	32 (4%)	2 (0%)	46	81

All (2) Ramachandran outliers are listed below:

Mol	Chain	Res	Type
1	A	376	ILE
1	B	376	ILE

5.3.2 Protein sidechains [i](#)

In the following table, the Percentiles column shows the percent sidechain outliers of the chain as a percentile score with respect to all X-ray entries followed by that with respect to entries of similar resolution.

The Analysed column shows the number of residues for which the sidechain conformation was analysed, and the total number of residues.

Mol	Chain	Analysed	Rotameric	Outliers	Percentiles	
1	A	325/348 (93%)	316 (97%)	9 (3%)	51	80
1	B	323/348 (93%)	308 (95%)	15 (5%)	33	71
All	All	648/696 (93%)	624 (96%)	24 (4%)	41	75

All (24) residues with a non-rotameric sidechain are listed below:

Mol	Chain	Res	Type
1	A	26	TYR
1	A	36	ASP
1	A	46	TRP
1	A	108	ILE
1	A	164	ILE
1	A	286	ILE
1	A	344	ARG
1	A	406	LEU
1	A	408	LEU
1	B	26	TYR
1	B	34	LEU
1	B	36	ASP
1	B	69	LYS
1	B	108	ILE
1	B	114	LEU
1	B	162	PHE
1	B	172	LEU
1	B	183	LEU
1	B	184	LEU
1	B	208	PHE
1	B	242	GLN
1	B	276	MET
1	B	351	LEU
1	B	406	LEU

Some sidechains can be flipped to improve hydrogen bonding and reduce clashes. All (5) such sidechains are listed below:

Mol	Chain	Res	Type
1	B	38	ASN
1	B	165	ASN
1	B	167	GLN
1	B	284	ASN
1	B	290	ASN

5.3.3 RNA ⓘ

There are no RNA molecules in this entry.

5.4 Non-standard residues in protein, DNA, RNA chains ⓘ

There are no non-standard protein/DNA/RNA residues in this entry.

5.5 Carbohydrates ⓘ

There are no carbohydrates in this entry.

5.6 Ligand geometry ⓘ

4 ligands are modelled in this entry.

In the following table, the Counts columns list the number of bonds (or angles) for which Mogul statistics could be retrieved, the number of bonds (or angles) that are observed in the model and the number of bonds (or angles) that are defined in the chemical component dictionary. The Link column lists molecule types, if any, to which the group is linked. The Z score for a bond length (or angle) is the number of standard deviations the observed value is removed from the expected value. A bond length (or angle) with $|Z| > 2$ is considered an outlier worth inspection. RMSZ is the root-mean-square of all Z scores of the bond lengths (or angles).

Mol	Type	Chain	Res	Link	Bond lengths			Bond angles		
					Counts	RMSZ	# $ Z > 2$	Counts	RMSZ	# $ Z > 2$
2	9PG	A	501	-	20,22,22	0.82	1 (5%)	29,31,31	1.25	2 (6%)
3	BNG	A	502	-	21,21,21	0.50	0	26,26,26	0.71	0
2	9PG	B	501	-	20,22,22	0.85	1 (5%)	29,31,31	1.34	1 (3%)
3	BNG	B	502	-	21,21,21	0.47	0	26,26,26	0.93	1 (3%)

In the following table, the Chirals column lists the number of chiral outliers, the number of chiral centers analysed, the number of these observed in the model and the number defined in the chemical component dictionary. Similar counts are reported in the Torsion and Rings columns. '-' means no outliers of that kind were identified.

Mol	Type	Chain	Res	Link	Chirals	Torsions	Rings
2	9PG	A	501	-	-	0/10/30/30	0/2/2/2
3	BNG	A	502	-	-	0/12/32/32	0/1/1/1
2	9PG	B	501	-	-	0/10/30/30	0/2/2/2
3	BNG	B	502	-	-	0/12/32/32	0/1/1/1

All (2) bond length outliers are listed below:

Mol	Chain	Res	Type	Atoms	Z	Observed(Å)	Ideal(Å)
2	A	501	9PG	O7-N	-2.40	1.18	1.22
2	B	501	9PG	O7-N	-2.39	1.18	1.22

All (4) bond angle outliers are listed below:

Mol	Chain	Res	Type	Atoms	Z	Observed($^{\circ}$)	Ideal($^{\circ}$)
2	B	501	9PG	C12-O1-C1	-6.06	109.07	117.87
2	A	501	9PG	C12-O1-C1	-5.23	110.28	117.87
2	A	501	9PG	O7-N-C9	2.23	120.27	118.67
3	B	502	BNG	O1-C1-C2	3.35	112.12	108.00

There are no chirality outliers.

There are no torsion outliers.

There are no ring outliers.

4 monomers are involved in 10 short contacts:

Mol	Chain	Res	Type	Clashes	Symm-Clashes
2	A	501	9PG	2	0
3	A	502	BNG	1	0
2	B	501	9PG	1	0
3	B	502	BNG	6	0

5.7 Other polymers [i](#)

There are no such residues in this entry.

5.8 Polymer linkage issues [i](#)

There are no chain breaks in this entry.

6 Fit of model and data ⓘ

6.1 Protein, DNA and RNA chains ⓘ

In the following table, the column labelled ‘#RSRZ> 2’ contains the number (and percentage) of RSRZ outliers, followed by percent RSRZ outliers for the chain as percentile scores relative to all X-ray entries and entries of similar resolution. The OWAB column contains the minimum, median, 95th percentile and maximum values of the occupancy-weighted average B-factor per residue. The column labelled ‘Q< 0.9’ lists the number of (and percentage) of residues with an average occupancy less than 0.9.

Mol	Chain	Analysed	<RSRZ>	#RSRZ>2	OWAB(Å ²)	Q<0.9
1	A	387/417 (92%)	0.30	30 (7%) 16 16	30, 140, 209, 243	0
1	B	385/417 (92%)	0.02	12 (3%) 52 52	88, 135, 183, 220	0
All	All	772/834 (92%)	0.16	42 (5%) 29 28	30, 137, 200, 243	0

All (42) RSRZ outliers are listed below:

Mol	Chain	Res	Type	RSRZ
1	A	190	ASP	11.0
1	A	186	PHE	5.3
1	A	313	LEU	5.1
1	A	217	PHE	4.7
1	A	312	ALA	4.7
1	A	210	LEU	4.0
1	A	188	LYS	3.8
1	A	189	THR	3.7
1	B	401	SER	3.2
1	A	215	GLU	2.9
1	A	183	LEU	2.9
1	B	217	PHE	2.8
1	A	407	SER	2.8
1	A	185	PHE	2.8
1	A	246	PHE	2.7
1	B	402	GLY	2.7
1	A	187	ALA	2.7
1	A	33	TRP	2.6
1	B	312	ALA	2.6
1	A	214	LEU	2.6
1	B	9	PHE	2.5
1	A	218	ARG	2.5
1	A	208	PHE	2.5
1	A	378	PHE	2.5

Continued on next page...

Continued from previous page...

Mol	Chain	Res	Type	RSRZ
1	A	160	ILE	2.4
1	A	408	LEU	2.4
1	B	408	LEU	2.4
1	B	249	SER	2.4
1	A	209	SER	2.4
1	B	40	ILE	2.4
1	A	119	ASN	2.4
1	A	11	MET	2.3
1	B	142	ARG	2.3
1	A	376	ILE	2.3
1	A	403	PRO	2.3
1	B	252	ALA	2.2
1	A	287	GLY	2.2
1	A	43	SER	2.1
1	A	212	LEU	2.1
1	A	44	ASP	2.1
1	B	248	THR	2.1
1	B	316	VAL	2.0

6.2 Non-standard residues in protein, DNA, RNA chains [i](#)

There are no non-standard protein/DNA/RNA residues in this entry.

6.3 Carbohydrates [i](#)

There are no carbohydrates in this entry.

6.4 Ligands [i](#)

In the following table, the Atoms column lists the number of modelled atoms in the group and the number defined in the chemical component dictionary. LLDF column lists the quality of electron density of the group with respect to its neighbouring residues in protein, DNA or RNA chains. The B-factors column lists the minimum, median, 95th percentile and maximum values of B factors of atoms in the group. The column labelled 'Q< 0.9' lists the number of atoms with occupancy less than 0.9.

Mol	Type	Chain	Res	Atoms	RSCC	RSR	LLDF	B-factors(\AA^2)	Q<0.9
2	9PG	A	501	21/21	0.94	0.54	2.93	107,127,171,197	0
3	BNG	A	502	21/21	0.72	0.30	1.41	16,16,168,168	0
2	9PG	B	501	21/21	0.94	0.34	0.85	98,122,169,210	0
3	BNG	B	502	21/21	0.90	0.27	0.44	82,127,173,194	0

6.5 Other polymers [i](#)

There are no such residues in this entry.